

AT-146-1 42095100065 UPPER

PD2000051-00 SWING UNIT
PF1000465-02 WINCH SYSTEM
PG2000059-00 BOOM UNIT
PH1000399-00 SAFETY DEVICES
PJ3000235-00 BUCKET SYSTEM
PJ5000003-00 BOOSTER UNIT
PK2000247-00 FRAME UNIT
PO1000131-03 INDICATION PLATES
PY1000662-04 OPTIONS,1
PY2000026-00 OPTIONS,2
ASSEMBLY

CLICK HERE TO **DOWNLOAD** THE COMPLETE MANUAL

- Thank you very much for reading the preview of the manual.
- You can download the complete manual from: www.heydownloads.com by clicking the link below



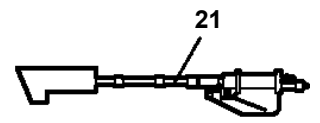
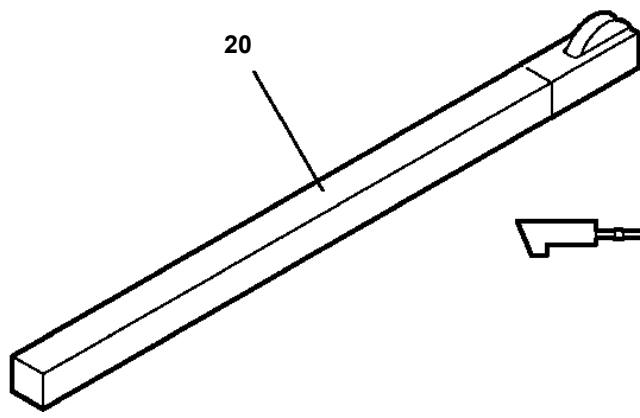
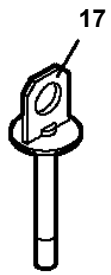
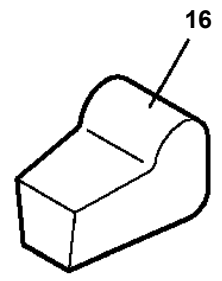
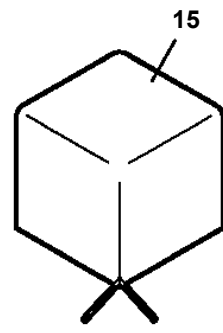
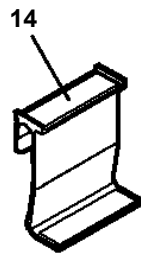
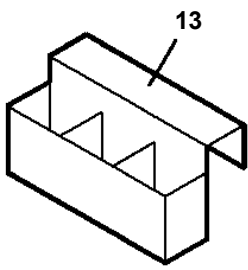
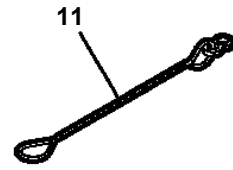
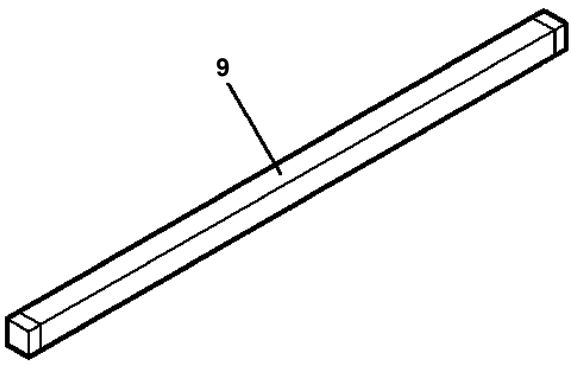
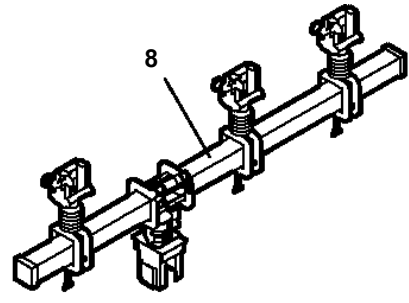
- Please note: If there is no response to CLICKING the link, please download this PDF first and then click on it.

CLICK HERE TO **DOWNLOAD** THE COMPLETE MANUAL

AT-146-1 42095100065 UPPER

Pos No.	Parts No	Parts Name	Qty	Unit	Technical Data	Serial No (Start)	Serial No (End)
1	(*****)	FRAME	1				
2	(*****)	PIPING (BUCKET)	1				
3	(*****)	ELEC.ASSY (BUCKET)	1				
4	(*****)	OPE.ASSY	1				
5	(*****)	PIPING,GREASE (BUCKET)	1				227373
	(*****)	PIPING,GREASE	1			227374	
6	(*****)	LAMP	1				
11	(*****)	BUCKET	1				
12	(*****)	BUCKET (INNER CASE)	1				
13	(*****)	COVER (FRP,WHITE)	1				227380
	(*****)	COVER (FRP,WHITE)	1			227381	
14	(*****)	COVER,BOOM (TOP/FRP,WHITE)	1				
15	42264603000	COVER (CLOTH,WHITE)	1				
16	42470341000	ACCESSORIES (BUCKET INNER MAT)	1				

AT-146-1 42095100065 UPPER
PY2000026-00 OPTIONS,2



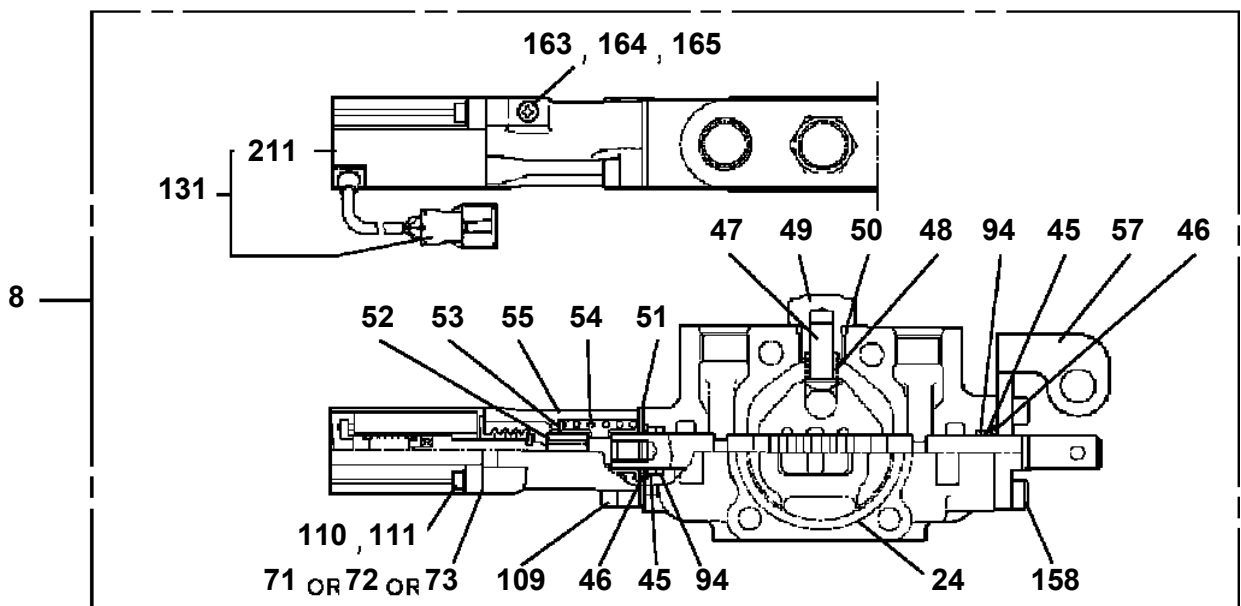
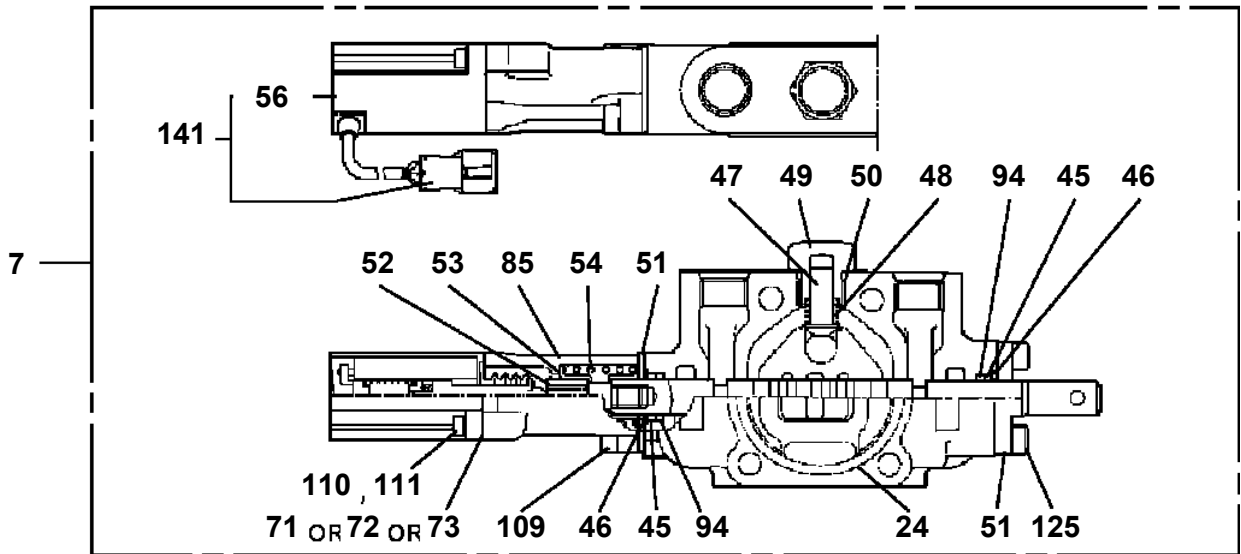
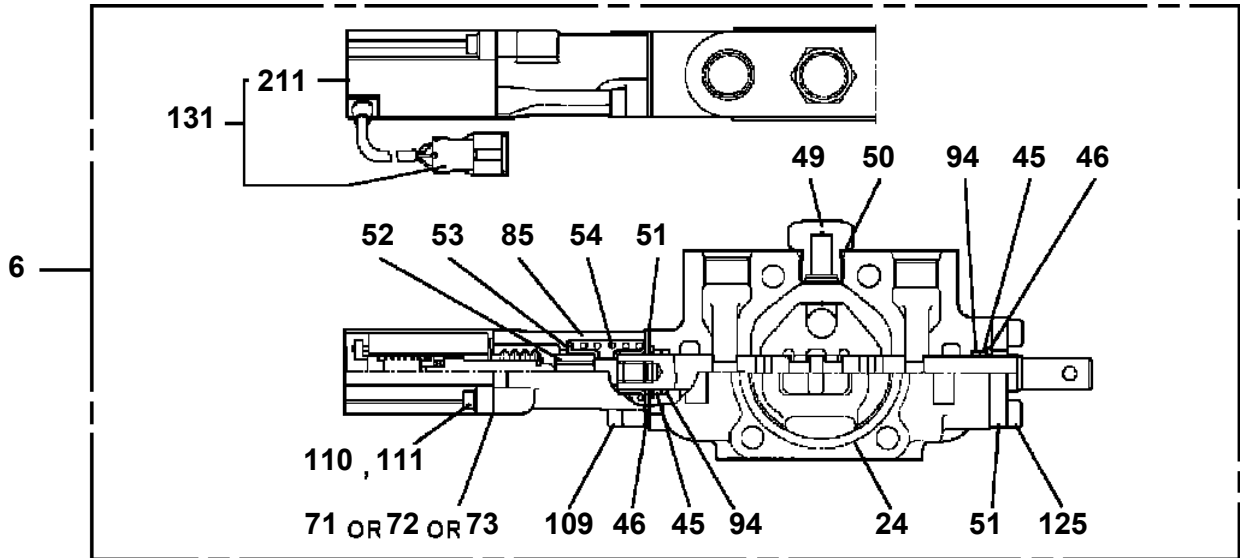
AT-146-1 42095100065 UPPER

Pos No.	Parts No	Parts Name	Qty	Unit	Technical Data	Serial No (Start)	Serial No (End)	Remarks	Pages
10	36653850000	PUMP,HYDRAULIC	1						

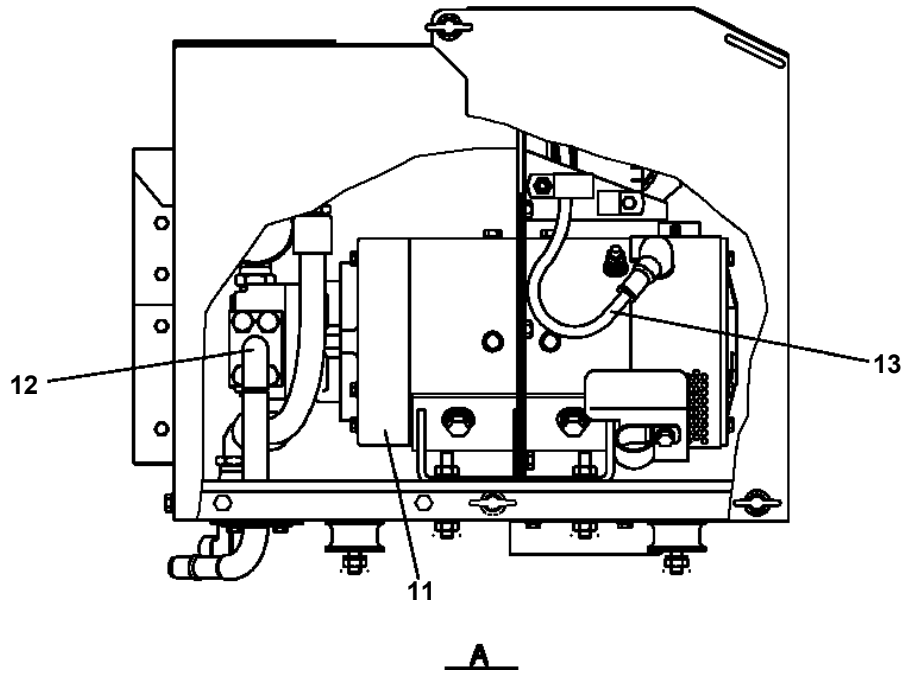
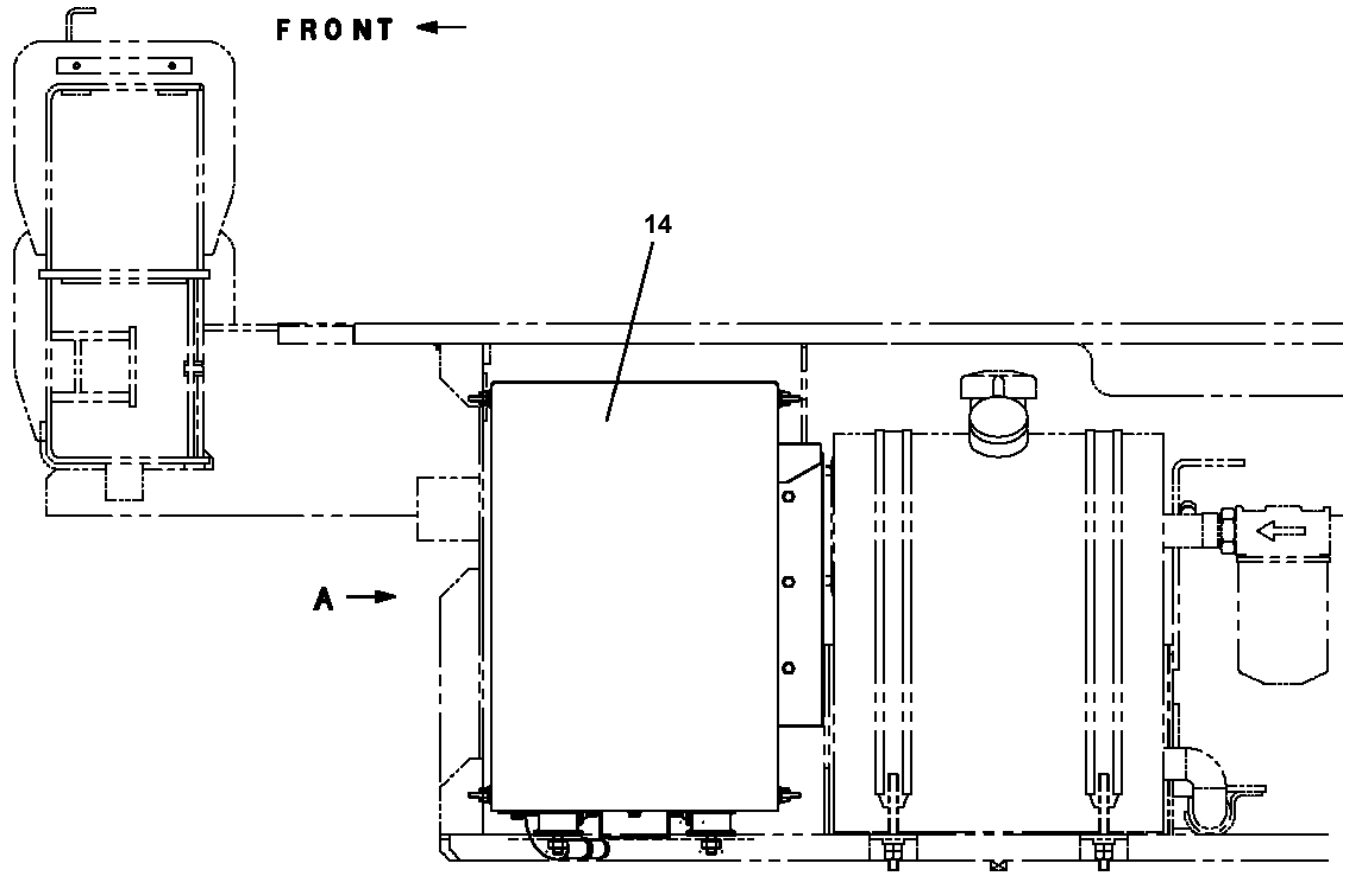
AT-146-1 4209510065 UPPER

Pos No.	Parts No	Parts Name	Qty	Unit	Technical Data	Serial No (Start)	Serial No (End)	Remark
2	42630737510	HOUSING	1					
3	42630617630	O-RING	1					
12	42630617570	RETAINER (SHAFT A)	1					
13	42630617580	RETAINER (SHAFT B)	1					
25	42630737550	POTENTIOMETER	1					
43	42630737590	SENSOR (ANGLE)	1					
51	82114101120	CONNECTOR	1					
52	82111101018	TERMINAL	9					
53	82121102120	HOLDER	1					
54	82121101009	PLUG (GREEN)	5					
55	82121101050	PLUG (BLACK/AV0.3 TO 0.5)	9					
56	82114101040	CONNECTOR (4P,MALE)	2					
57	82111101010	TERMINAL	16					
58	82121102040	HOLDER (4P,BOTH)	4					
59	82114101030	CONNECTOR (3P,MALE)	1					
60	82121102030	HOLDER (3P,BOTH)	2					
61	82114101060	CONNECTOR	1					
62	82121102060	HOLDER	2					
63	82111101510	TERMINAL	16					
64	82114102030	CONNECTOR (3P,FEMALE)	1					
65	82114102040	CONNECTOR (4P,FEMALE)	2					
66	82114102060	CONNECTOR	1					
67	82121101085	PLUG (AVS0.85)	32					
100	42630761000	BRUSH,ROTARY JOINT	1					

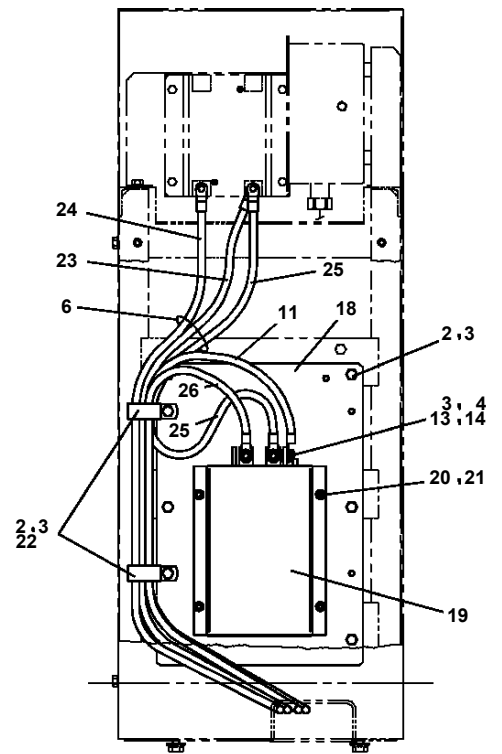
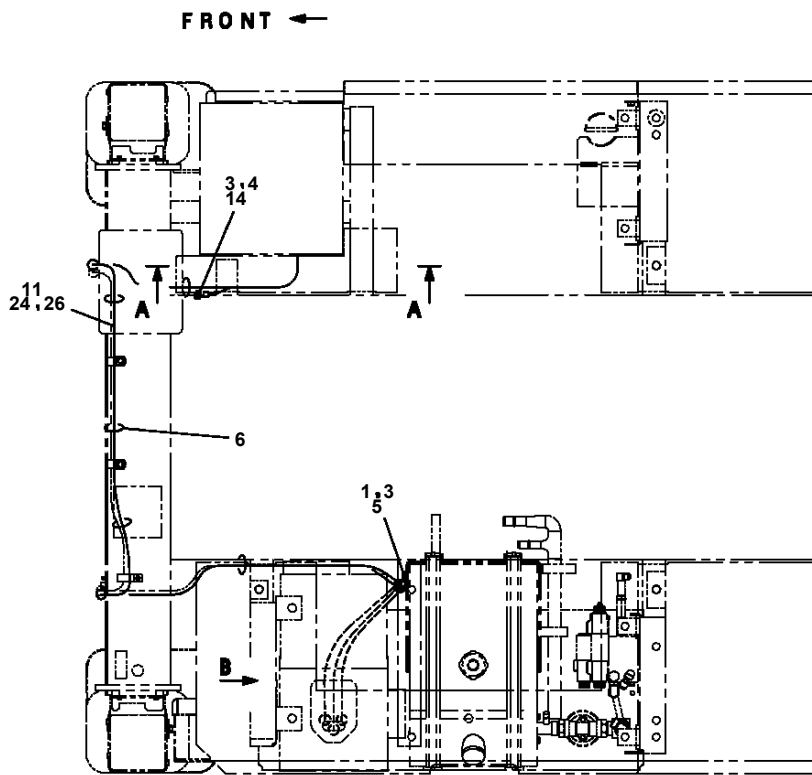
**AT-146-1 42095100065 UPPER
PB1320572-01 VALVE, MANUAL CONTROL**



**AT-146-1 42095100065 UPPER
PB1380150-00 POWER SUPPLY (MOTOR/MOUNT)**



**AT-146-1 42095100065 UPPER
PB1380171-00 POWER SUPPLY (MOTOR/WIRING)**

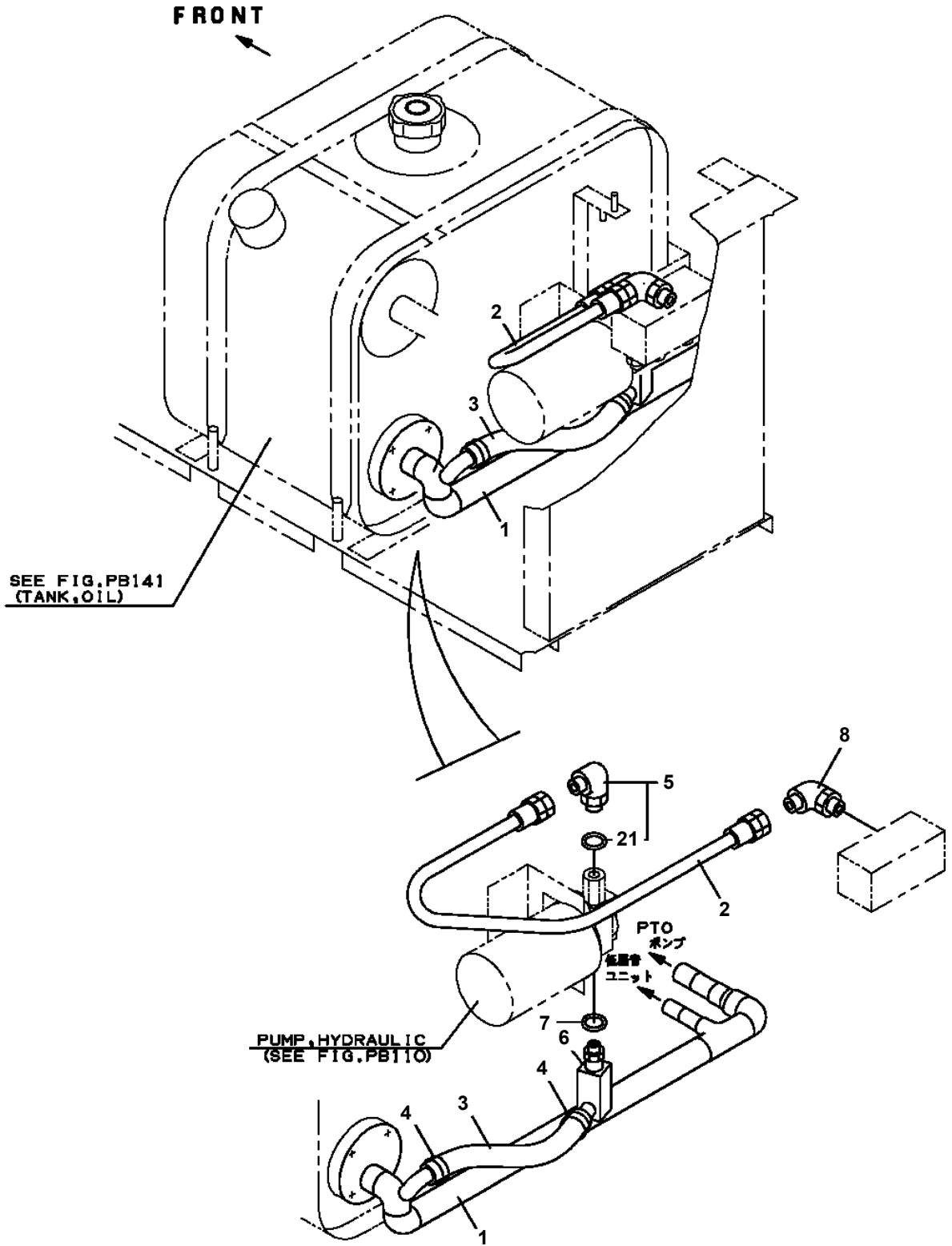


A - A

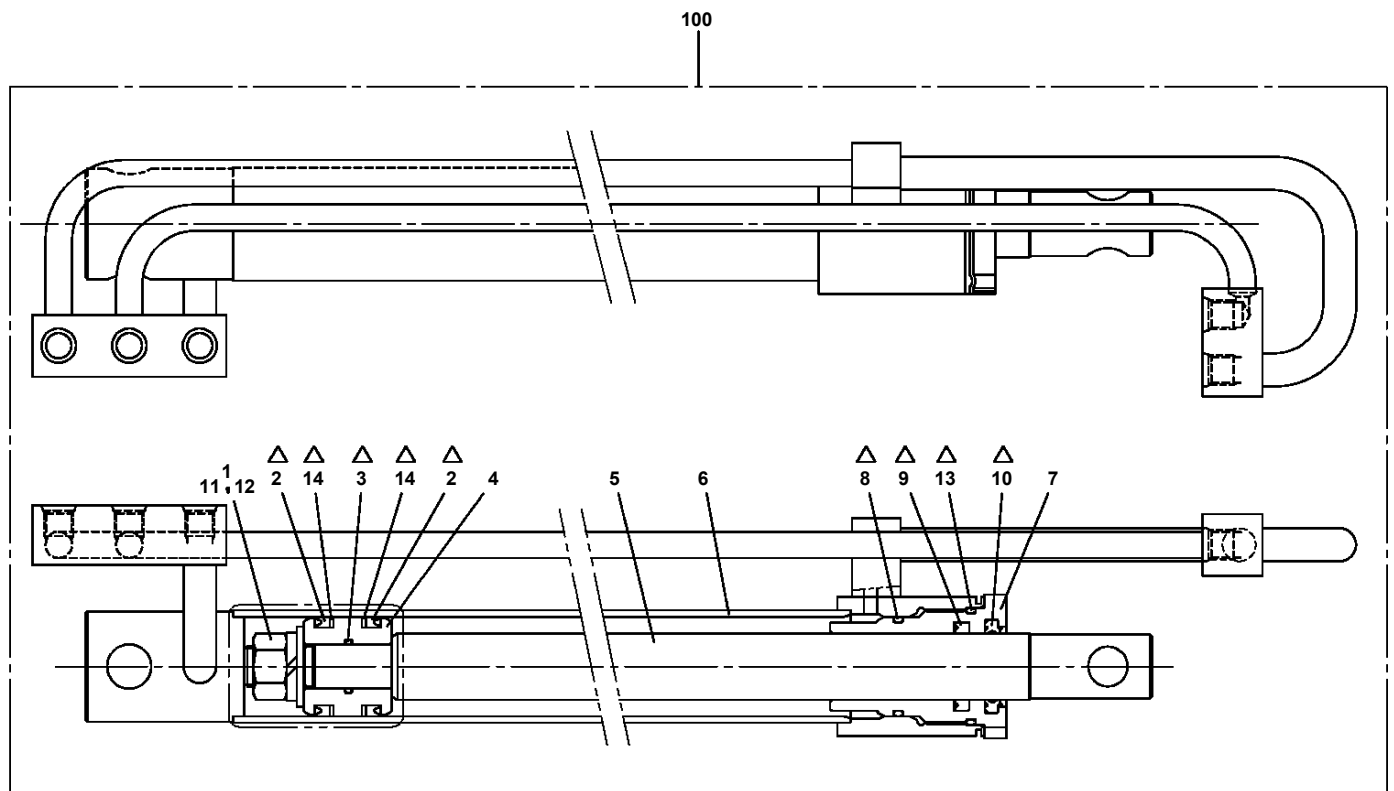
AT-146-1 42095100065 UPPER

Pos No.	Parts No	Parts Name	Qty	Unit	Technical Data	Serial No (Start)	Serial No (End)	Remarks
85	91002801400	O-RING	1		1B P14		227949	
	91002801400	O-RING	8		1B P14			
86	80430620600	JOINT (WITH O-RING)	3		L,G3/8-G3/8			
87	80430620400	JOINT	2					
101	36601610001	VALVE,RELIEF	1				227656	
102	42340240500	FILTER,OIL	1				227949	
103	80491303020	JOINT (WITH O-RING)	1		L,G3/8-G1/4		227949	
104	36672530000	FILTER (WITH O-RING)	2					
114	80400160128	JOINT	1		S,G3/8-G1/4			
131	37000927870	JOINT	1					
134	80400160131	JOINT	1					
136	80441010604	FITTING	1					
143	37000928370	JOINT	1		S,G1/2-G1/2			
151	36625000000	VALVE ASSY,CHECK	1					

**AT-146-1 42095100065 UPPER
PB1411373-00 PIPING,LOWER (EMERGENCY PUMP:L)**



AT-146-1 42095100065 UPPER
PC1050222-00 CYLINDER,EXTENSION (REAR)



△:PACKING SET KEY NO.30 (KEY NO.2,3,8,9,10,13,14)

AT-146-1 42095100065 UPPER

Pos No.	Parts No	Parts Name	Qty	Unit	Technical Data	Serial No (Start)	Serial No (End)	R
118	80491303020	JOINT (WITH O-RING)	4		L,G3/8-G1/4			
120	37000927930	JOINT	1					
121	80430620800	JOINT	1					
139	91002801400	O-RING	8		1B P14			

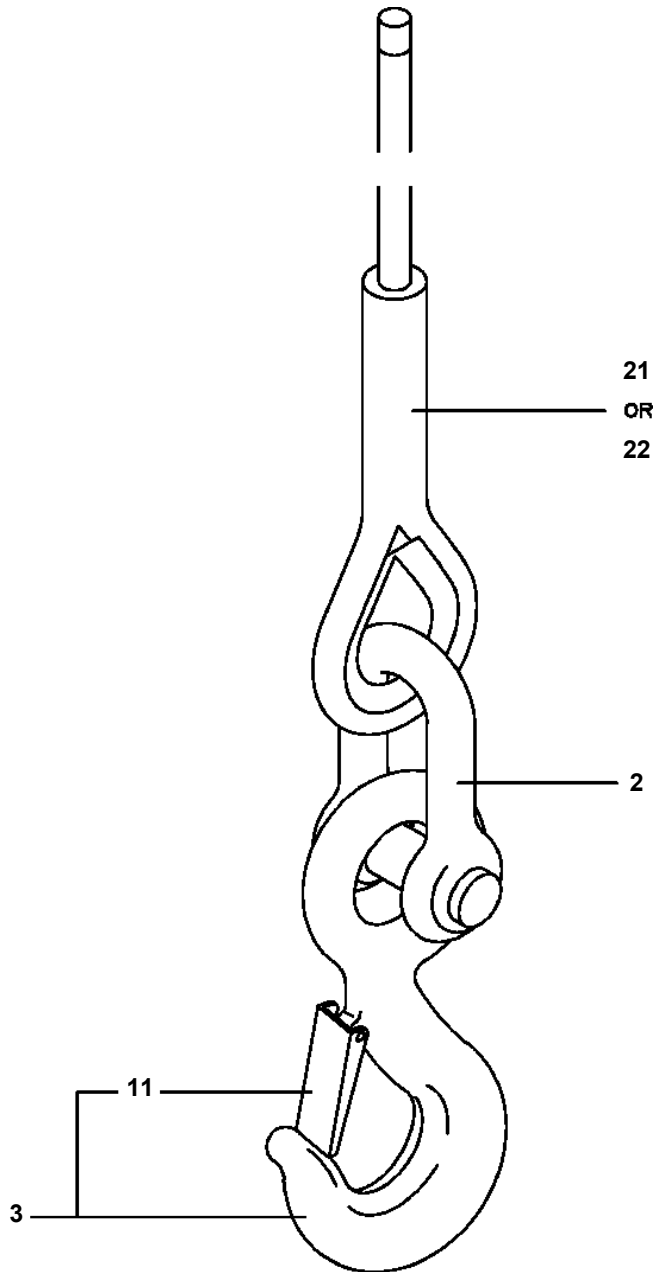
AT-146-1 4209510065 UPPER

Pos No.	Parts No	Parts Name	Qty	Unit	Technical Data	Serial No (Start)	Serial No (End)	Remarks
1	42271801101	COVER	1					
2	42271641200	COVER	1					
3	42271801600	COVER	1					
4	42271801500	COVER	1					
6	82464104602	HINGE	4					
7	80147310430	RIVET	16		NSA 4-3		227354	
8	37000565900	PLATE	4					
9	80172805014	SCREW,MACHINE	4		M5X14			
10	90201500500	NUT	10		M5			
11	90302510501	WASHER,SPRING	10		5			
12	80175805014	SCREW,MACHINE	6		M5X14			
13	82464100201	HINGE	2					
14	80172803008	SCREW,MACHINE	8		M3X8			
15	90201500300	NUT	16		M3		227354	
	90201500300	NUT	24		M3	227355		
16	90302510301	WASHER,SPRING (SUS 3)	16				227354	
	90302510301	WASHER,SPRING (SUS 3)	32			227355		
17	82466100702	CATCH	2					
18	80175803010	SCREW,MACHINE	16		M3X8			
19	82466009002	CATCH	4					
20	37000508510	PLATE	8					
21	82112001022	SLEEVE	2					
22	42220249510	ROPE,WIRE	1	M				
23	42271680020	HOOK	1					
26	80172803010	SCREW,MACHINE	8		M3X10	227355		
27	80163803010	SCREW,MACHINE	8		M3X10	227355		
61	82400000309	GROMMET	1		L=1000			
100	42271801000	COVER ASSY	1					

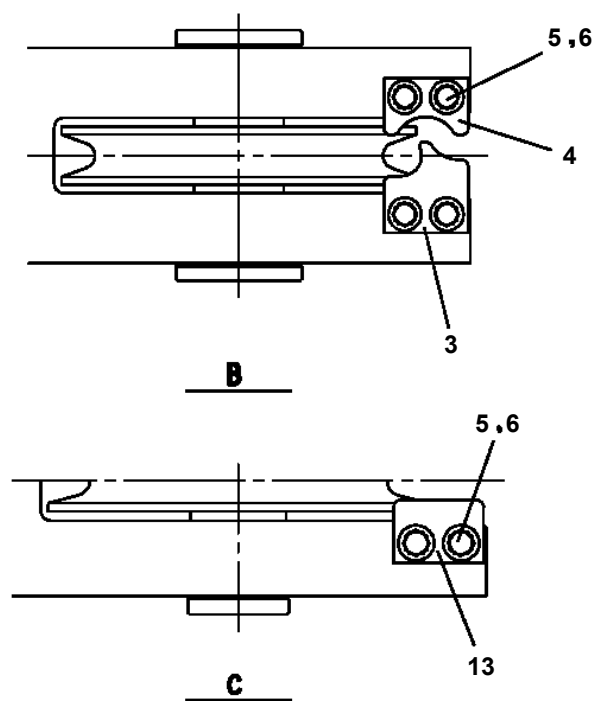
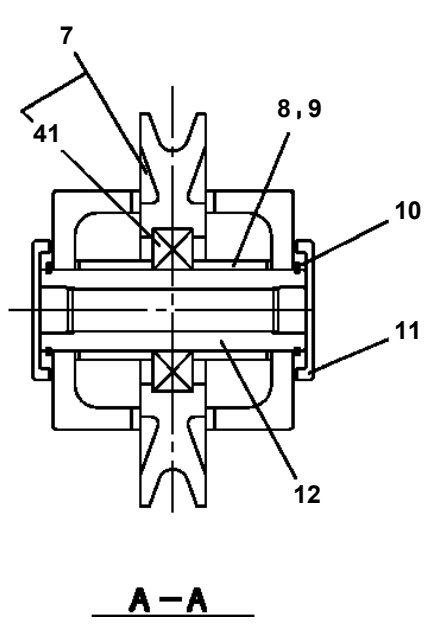
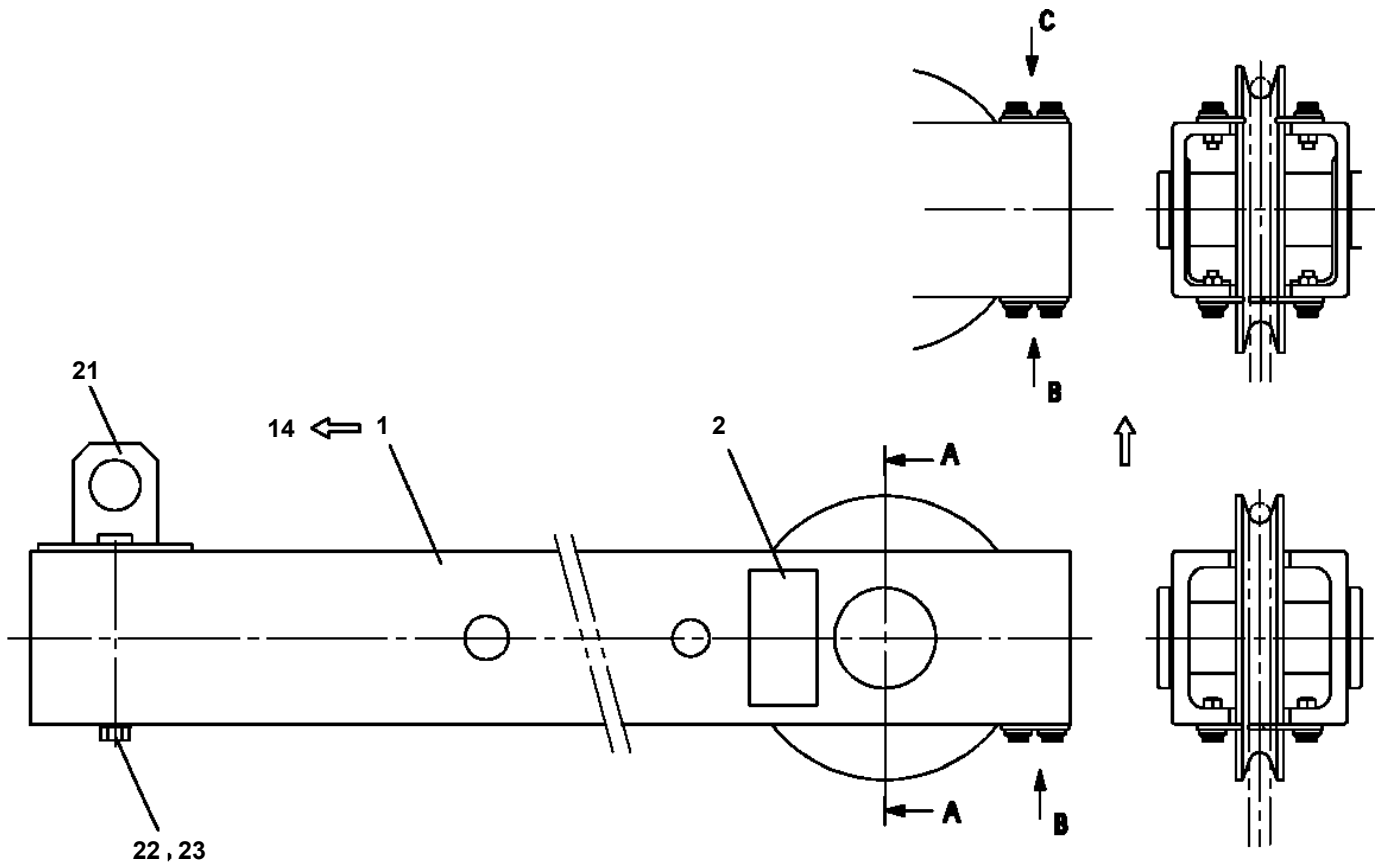
AT-146-1 4209510065 UPPER

Pos No.	Parts No	Parts Name	Qty	Unit	Technical Data	Serial No (Start)	Serial No (End)	Remark
1	36026278010	CYLINDER,ELEVATING	1					
2	36605570000	VALVE,COUNTERBALANCE	1					
3	90101208060	BOLT	4		M8X60		227641	
	90171108125	BOLT	4		M8X125	227642		
4	90302040801	WASHER,SPRING	4		8			
5	36625750000	VALVE,CHECK	1			227642		
21	80801005025	BEARING,PLAIN	2					
22	82458102000	NIPPLE,GREASE	2		B-PT1/8			
23	82400000459	CAP	2					
24	80720105025	PIN,SPRING	1		5X25			
25	91302211500	BEARING,PLAIN	2					
26	91684011500	PACKING	2					
27	91411210001	RING,BACKUP	2					
28	91002804400	O-RING	1		1B P44			
29	36026081000	PISTON	1					
30	36026271000	ROD	1					
32	80612110860	RING,RITAINING	1		AR86			
33	91002810500	O-RING	1		1B P105			
34	37000400170	BEARING,PLAIN	1					
36	91001206500	O-RING	1		1A G65			
37	91694008000	PACKING	1					
38	91410208000	RING,BACKUP	1					
39	91002911500	O-RING	1		1B G115			
40	91660008000	SEAL,DUST	1					
41	80622000800	RING,RITAINING	1		SP80			
42	80720104020	PIN,SPRING	1		4X20			
43	80316030020	PLUG	2		PT1/8			
44	36023182000	END,ROD	1					
51	36026089510	CYLINDER ASSY	1					
52	36026089530	COVER,ROD	1					
53	36026089901	PACKING SET	1		80X115			
62	80541700050	BEARING,SPHERICAL	1					
64	82100000548	CONNECTOR	1					
67	82100001411	TUBE,SPIRAL	1	M	SE-08BK			
68	80316090020	PLUG	1		KKT PT1/8			
81	82100001155	CONNECTOR	1					

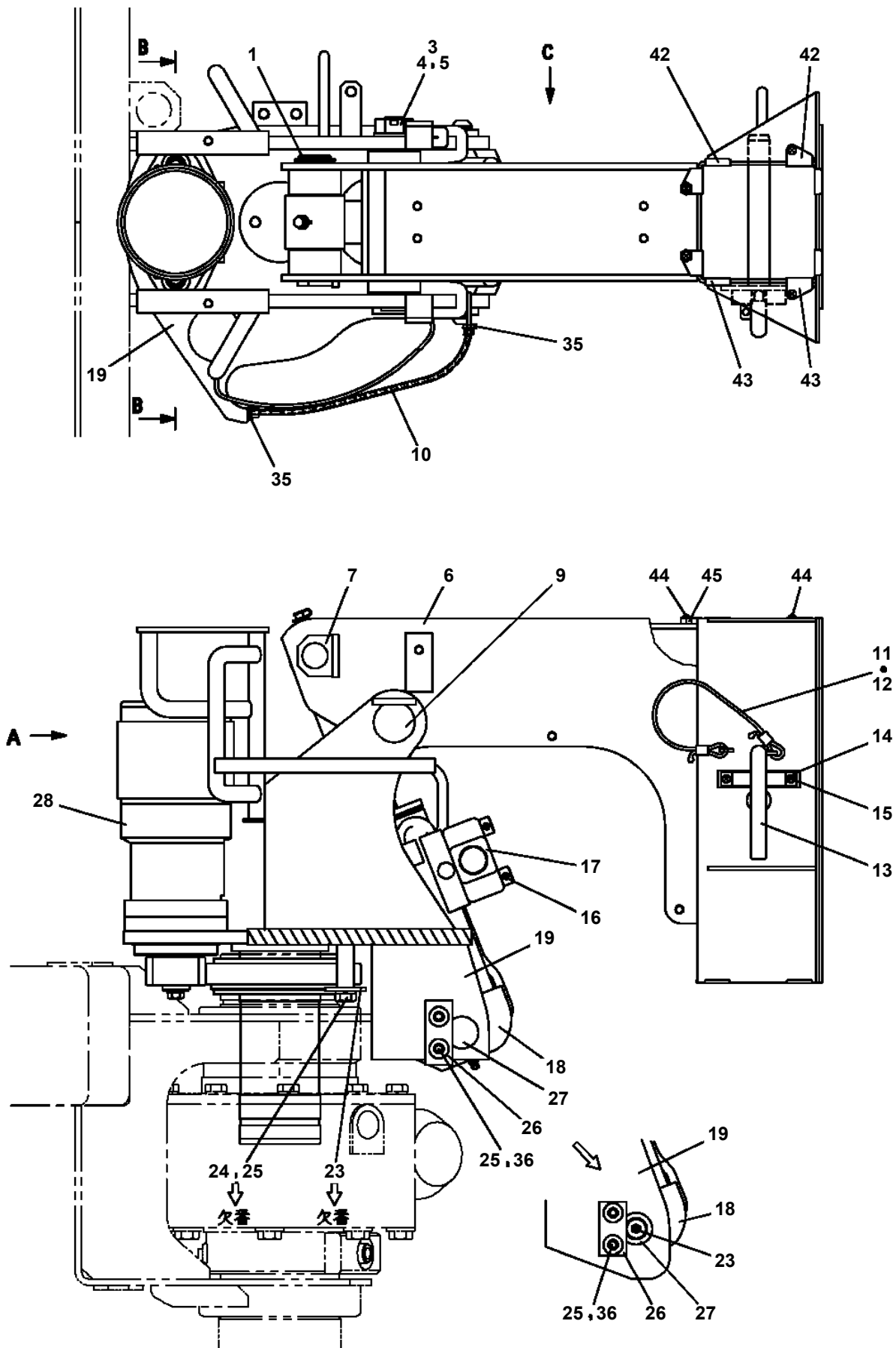
**AT-146-1 42095100065 UPPER
PF1050285-00 HOOK (1-PART LINE WITH ROPE)**



**AT-146-1 42095100065 UPPER
PF1350028-02 WINCH, JIB (FRP, INSULATION, GRAY)**



**AT-146-1 42095100065 UPPER
PF1350069-01 WINCH, JIB (SUPPORT)**



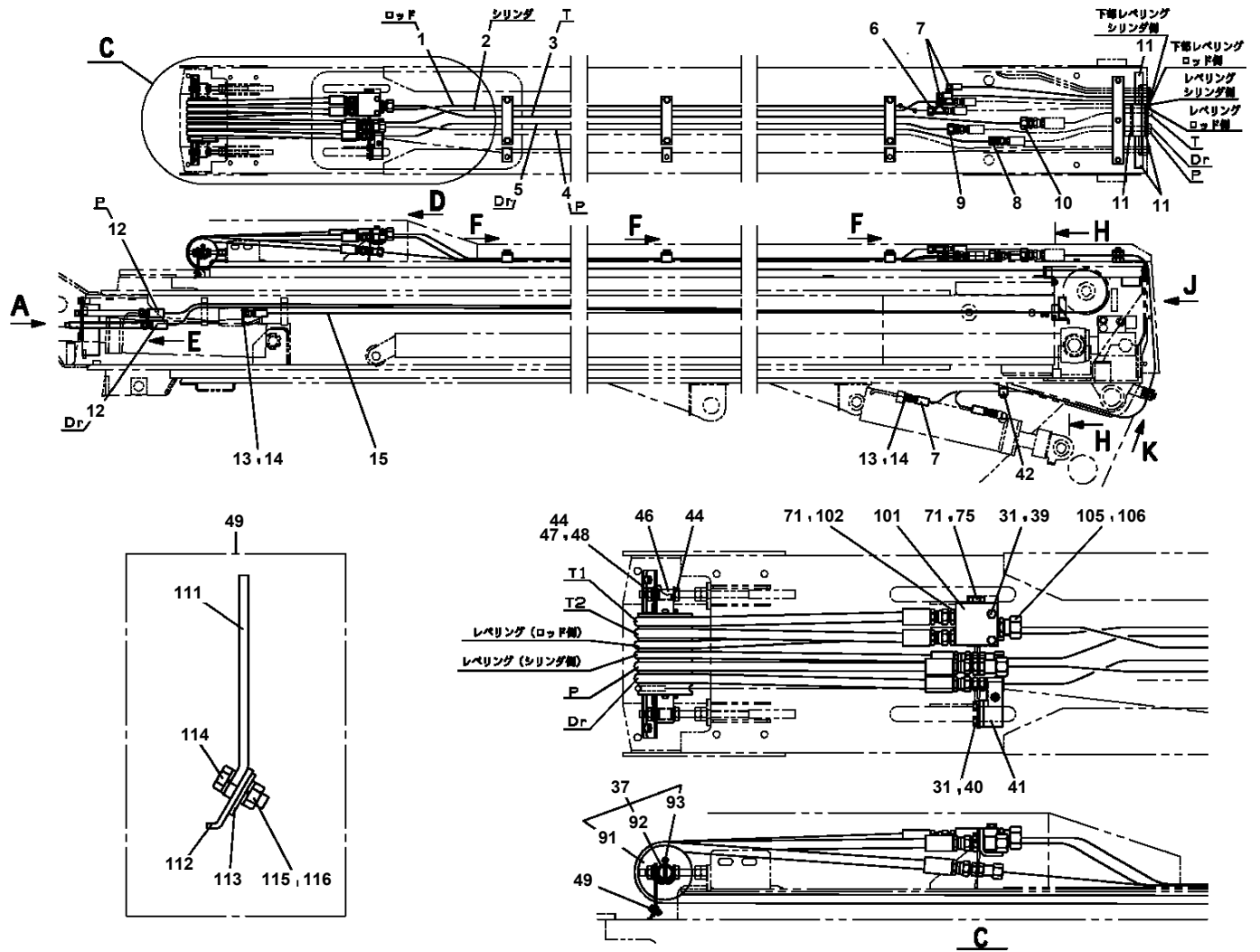
AT-146-1 4209510065 UPPER

Pos No.	Parts No	Parts Name	Qty	Unit	Technical Data	Serial No (Start)	Serial No (End)
2	36052881500	PISTON	1				
3	80612110450	RING,RITAINING	1		AR45		
4	80801003020	BEARING,PLAIN	2				
5	91350207000	BEARING,PLAIN (WITH PACKINGX2)	1				
8	91002906500	O-RING	1		1B G65		
9	91694004000	PACKING	1				
10	91410204001	RING,BACKUP	1				
11	91660004001	SEAL,DUST	1				
12	91002802800	O-RING	1		1B P28		
13	82456101000	NIPPLE,GREASE	1		A-PT1/8		
14	80801004020	BEARING,PLAIN	1				
15	91002907000	O-RING	1		1B G70		
16	90710005060	SCREW,SET	1		M5X6		
17	82400000459	CAP	1				
18	82455106000	NIPPLE,GREASE	2		A-M6F FE		
19	80806003020	BEARING,PLAIN	2				
31	36052889510	CYLINDER ASSY	1				
32	36052889520	ROD ASSY	1				
33	36052889530	COVER,ROD	1				
34	36052889900	PACKING SET (40X70)	1				
100	36052880000	CYLINDER,WINCH JIB	1				

AT-146-1 4209510065 UPPER

Pos No.	Parts No	Parts Name	Qty	Unit	Technical Data	Serial No (Start)	Serial No (End)	Re
65	37000403580	BEARING,PLAIN (DAIDO METAL)	2					
66	37001007740	SHEAVE ASSY	2					
67	90202481200	NUT	4		M12			
68	90202481600	NUT	4		M16			
69	89631601000	HOSE,VINYL	1		15X20,1M			
70	91810130240	FASTENER	2					
71	37000573180	PLATE	1					
72	37000144700	PIN	1					
73	90171110030	BOLT	2		M10X30			
74	37000524070	PLATE	1		T=6			
75	37000168250	PIN	1					
76	90171110020	BOLT	2		M10X20			
77	42200383280	PLATE	2					
78	42201520030	ROLLER	2					
79	90171110018	BOLT	4		M10X18			
80	90303071001	WASHER,PLAIN	4		10			
81	37000574850	PLATE	2					
82	42201630070	PLATE	2					
83	42201630030	PLATE	N		T=0.8			
84	42201630510	PLATE	N		T=0.8			
85	42201630050	PLATE	N		T=0.8			
86	90303070601	WASHER,PLAIN	2		6			
87	37000155020	PIN	2					
88	42201630520	PLATE	N		T=0.5			
89	42201630530	PLATE	N		T=0.5			
90	42201630500	PLATE	N		T=0.5			
91	42201630540	PLATE	N		T=0.5			
92	42201630550	PLATE	N		T=0.5			
93	42201630560	PLATE	N		T=0.5			
95	90171114045	BOLT	16		M14X45			
96	37000572020	PLATE	8					
97	90172110016	BOLT,HEXAGON SOCKET	4		M10X16			
98	37000576030	PLATE	1					
99	42201700020	PLATE	N		T=0.5			
100	42201700030	PLATE	N		T=0.5			
101	42201630570	PLATE	N		T=2.3			
102	42201630920	PLATE	N		T=2.3			
103	42201630900	PLATE	1		T=9.0			
104	37000576810	PLATE	8		T=1.0			
105	42201700040	PLATE	N		T=0.5			
106	42201700400	PLATE	N		T=0.5			
107	42201700500	PLATE	N		T=0.5			
161	42201700110	ROLLER ASSY	1					
162	37000179840	PIN	1					
163	90238402408	NUT,CASTLE	1		M24			
164	90303072401	WASHER,PLAIN	1		24			
165	80136350045	PIN,SPLIT	1		5X45			
181	42201700250	ROLLER ASSY	2					
182	42201700210	SUPPORT	1					
183	37000179830	PIN	2					
184	37000312280	SPACER	8					
202	42201700310	SUPPORT	1					
221	42200019511	ROLLER ASSY	2					
222	37000112160	PIN	2					
223	42201630810	SUPPORT	2					
224	80569036905	BEARING,NEEDLE	2					
225	80569123031	SPACER (NTN)	2					
226	42200014240	SPACER	2					
241	37002011650	PLATE,SLIDE	2					
242	42201460370	PLATE	6		T=0.8			
243	80184306016	SCREW,MACHINE	2		M6X16			
244	42201630610	RETAINER	2					
251	42200013410	SUPPORT	4					

AT-146-1 42095100065 UPPER
PG1220140-00 PIPING,BOOM



AT-146-1 42095100065 UPPER

Pos No.	Parts No	Parts Name	Qty	Unit	Technical Data	Serial No (Start)	Serial No (End)	Remarks	Pages
1	42390021140	PLATE	1						
2	90101212100	BOLT	1		M12X100				
3	90201201200	NUT	2		M12				
4	90303071201	WASHER,PLAIN	1		12				
5	42394630010	BAR	1						
6	42394630020	BAR	1						
7	42394630030	PLATE,NAME	1						
8	42394630040	PLATE,NAME	1						

AT-146-1 42095100065 UPPER

Pos No.	Parts No	Parts Name	Qty	Unit	Technical Data	Serial No (Start)	Serial No (End)	Remarks	Pages
100	42352350400	HARNESS	1						

AT-146-1 42095100065 UPPER

Pos No.	Parts No	Parts Name	Qty	Unit	Technical Data	Serial No (Start)	Serial No (End)	Remarks	Pages
100	42354820300	HARNESS	1						

AT-146-1 42095100065 UPPER

Pos No.	Parts No	Parts Name	Qty	Unit	Technical Data	Serial No (Start)	Serial No (End)	Remarks	Pages
100	42736990010	HARNESS	1						

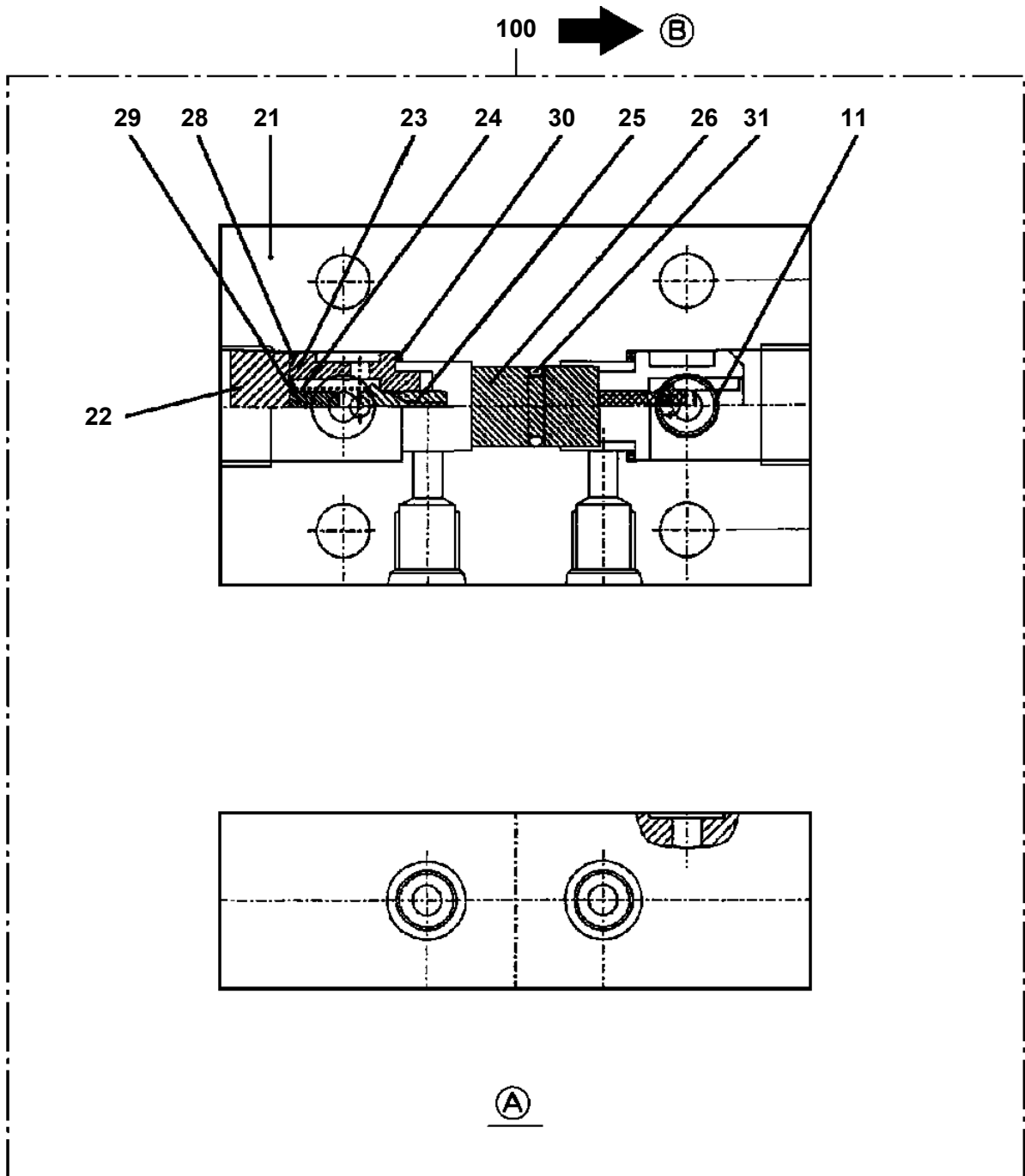
AT-146-1 42095100065 UPPER

Pos No.	Parts No	Parts Name	Qty	Unit	Technical Data	Serial No (Start)	Serial No (End)	Remarks	Pages
100	42475401400	HARNESS	1						

AT-146-1 42095100065 UPPER

Pos No.	Parts No	Parts Name	Qty	Unit	Technical Data	Serial No (Start)	Serial No (End)	Remarks	P
5	36601615010	SPRING	2						
6	36601615020	SHIM	N						
7	36601615030	PLUG	2						
10	36606425010	SPRING	2						
11	36601615050	PLUG	2						
21	36606425020	SEAL KIT (REPAIR KIT)	1						
100	36606420000	VALVE,RELIEF	1						

AT-146-1 42095100065 UPPER
PI1140133-01 VALVE,CHECK



AT-146-1 42095100065 UPPER

Pos No.	Parts No	Parts Name	Qty	Unit	Technical Data	Serial No (Start)	Serial No (End)	Remarks	Pages
12	91002801400	O-RING	2		1B P14				
	91002801400	O-RING	2		1B P14				
100	36625740001	VALVE,CHECK	1						
	36625740001	VALVE,CHECK	1						

AT-146-1 42095100065 UPPER

Pos No.	Parts No	Parts Name	Qty	Unit	Technical Data	Serial No (Start)	Serial No (End)	Remarks
2	91002801400	O-RING	2		1B P14			
6	91002800700	O-RING	1		1B P7			
9	91002801000	O-RING	2		1B P10			
10	90131510040	BOLT,HEXAGON SOCKET	2		M10X40			
11	36620038010	VALVE,PILOT CHECK	1					

AT-146-1 42095100065 UPPER

Pos No.	Parts No	Parts Name	Qty	Unit	Technical Data	Serial No (Start)	Serial No (End)	Remarks	Pages
1	42478931000	CASE,INNER	1						
2	42478932000	CASE,INNER	1						

CLICK HERE TO **DOWNLOAD** THE COMPLETE MANUAL

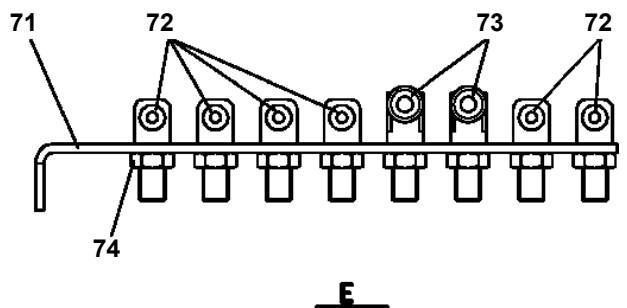
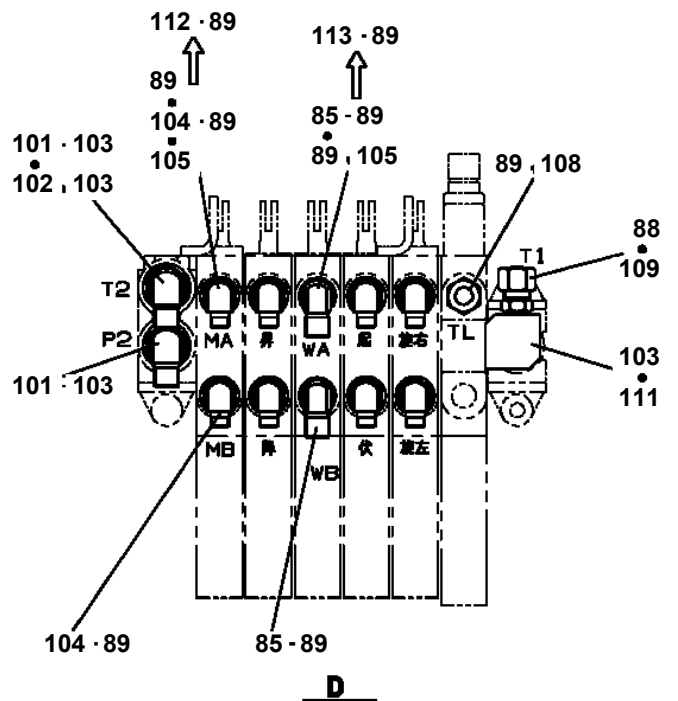
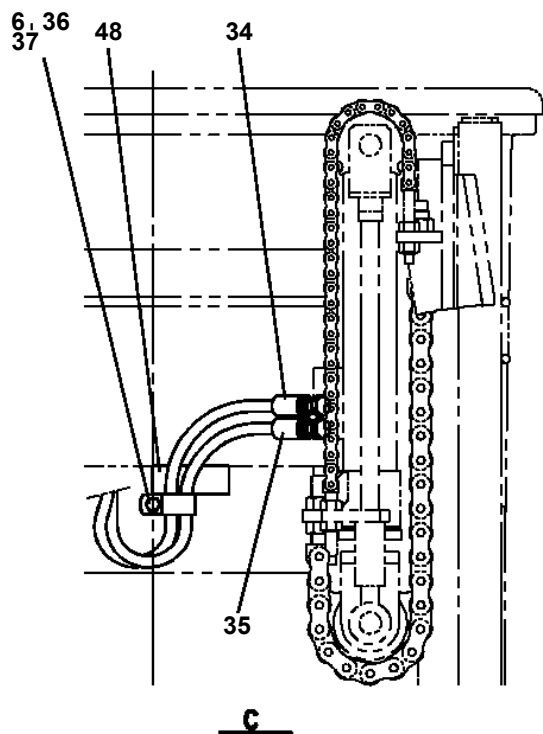
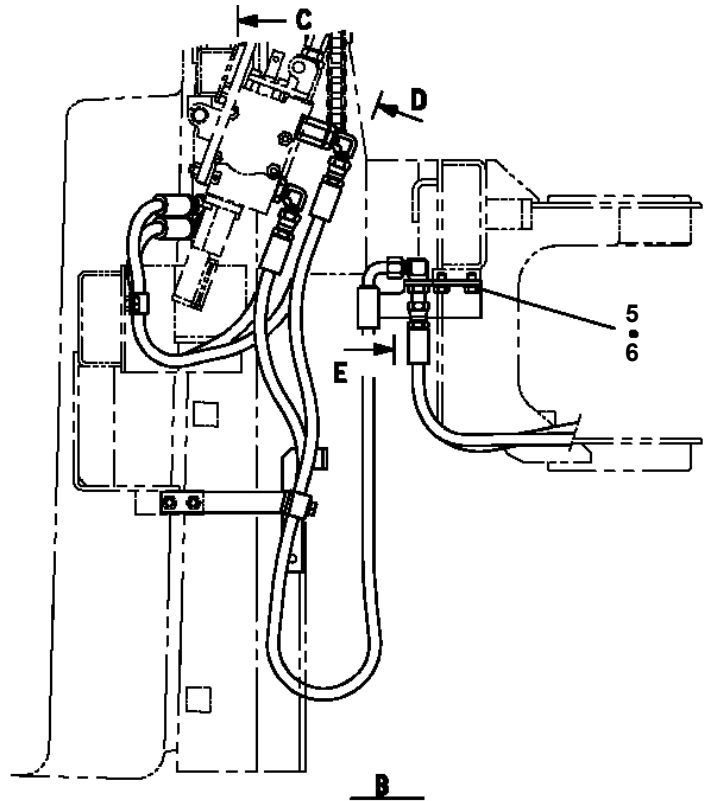
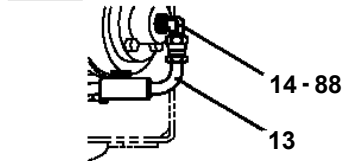
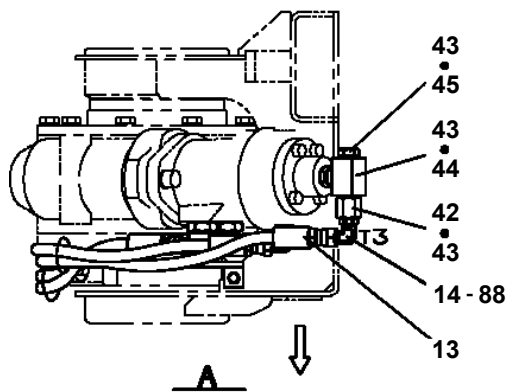
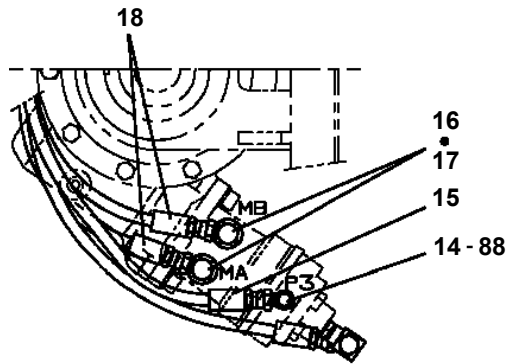
- Thank you very much for reading the preview of the manual.
- You can download the complete manual from: www.heydownloads.com by clicking the link below



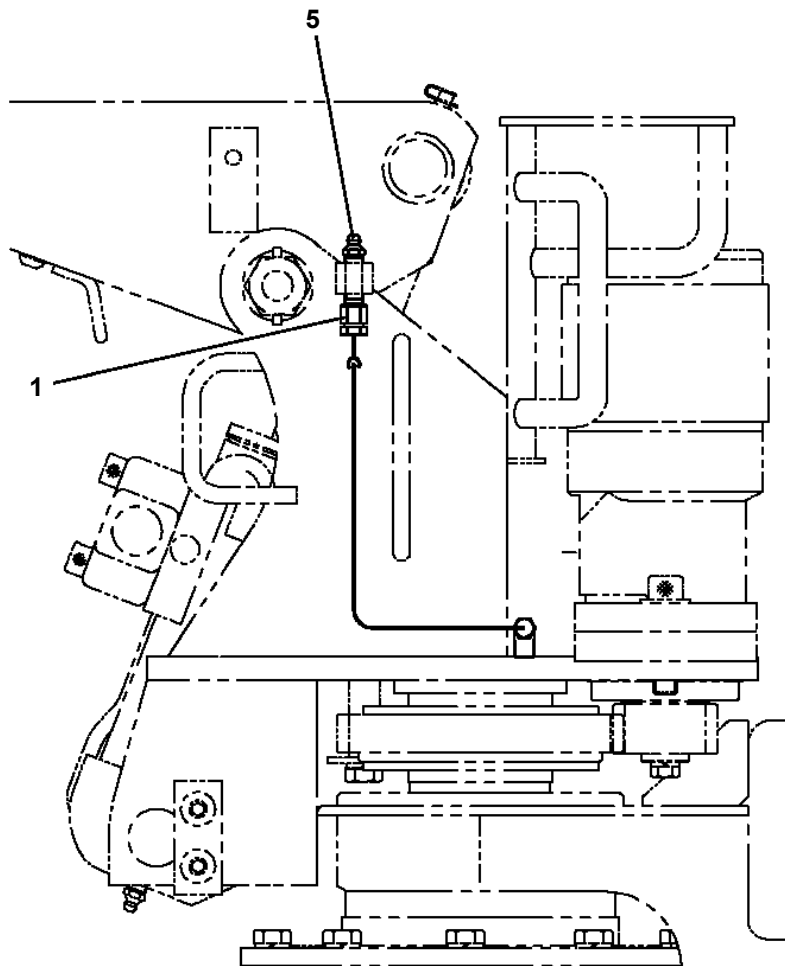
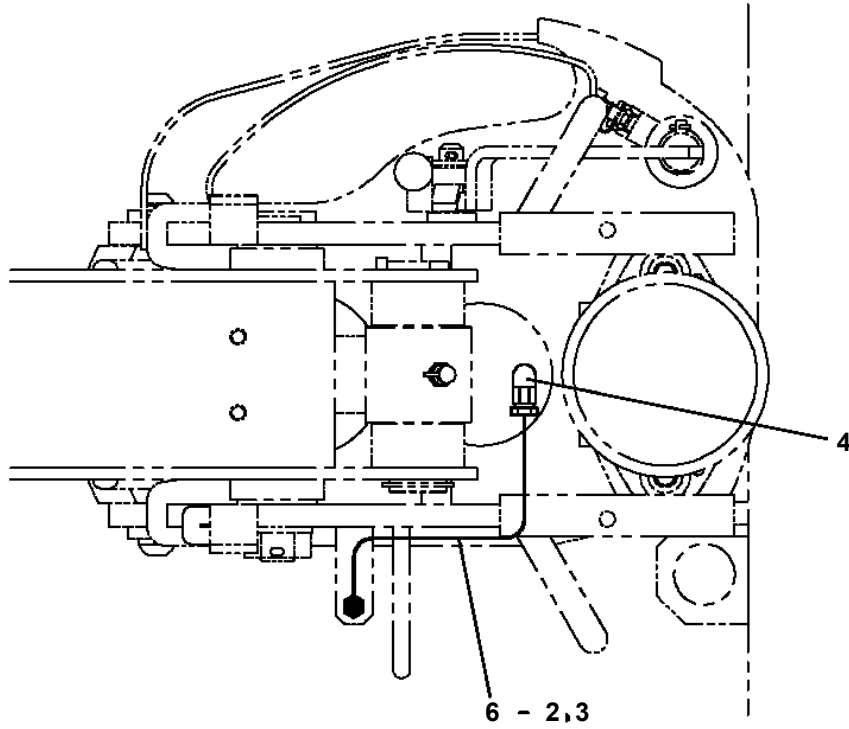
- Please note: If there is no response to CLICKING the link, please download this PDF first and then click on it.

CLICK HERE TO **DOWNLOAD** THE COMPLETE MANUAL

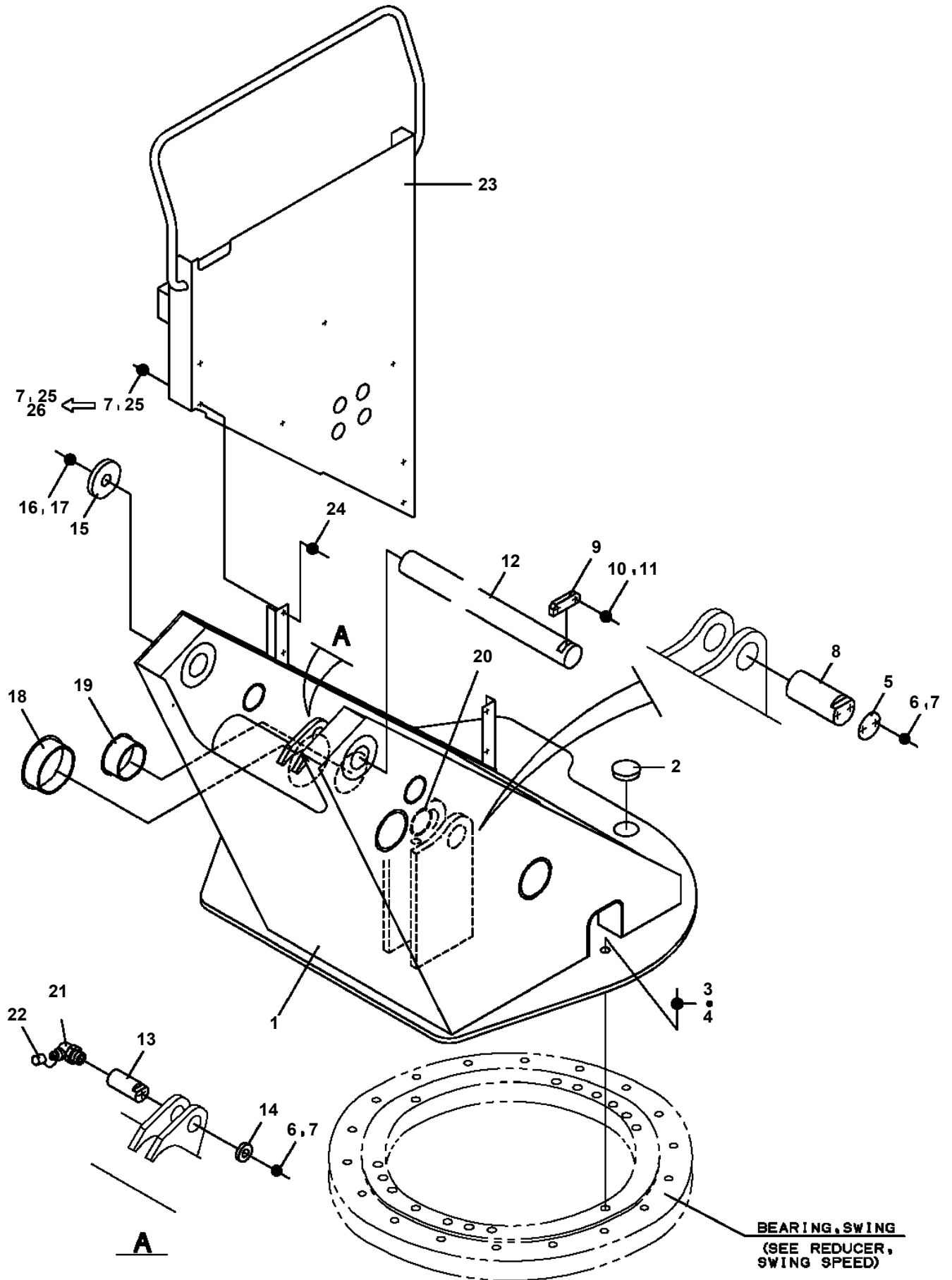
**AT-146-1 42095100065 UPPER
PJ3110024-01 PIPING (BUCKET)**



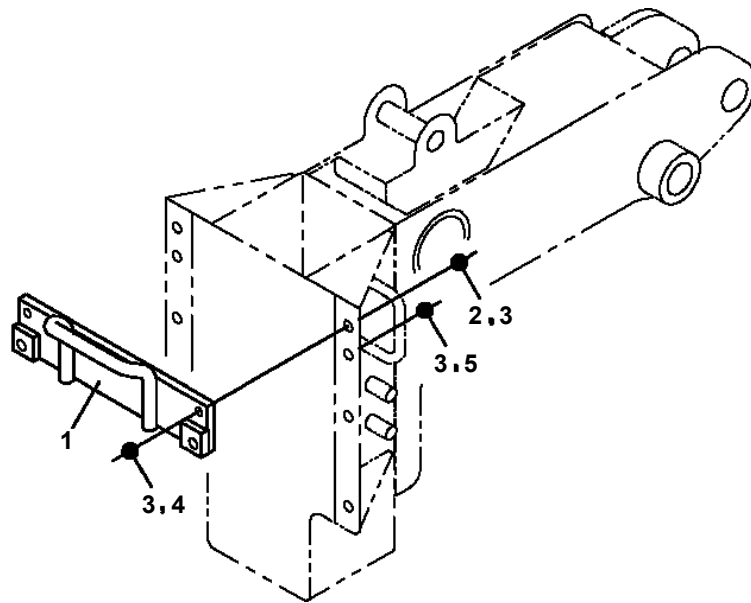
**AT-146-1 42095100065 UPPER
PJ3250009-01 PIPING, GREASE (WINCH)**



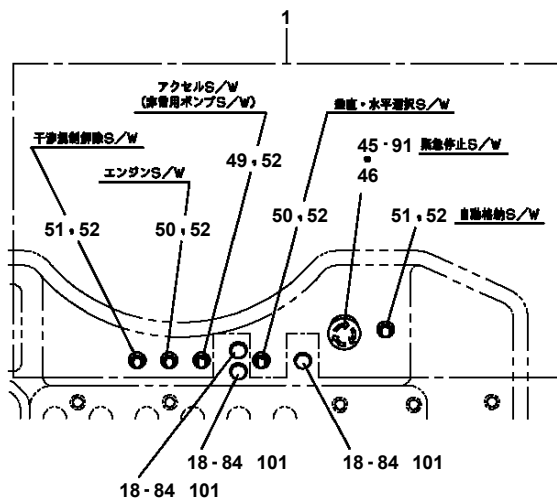
**AT-146-1 42095100065 UPPER
PK1100374-03 SWING FRAME**



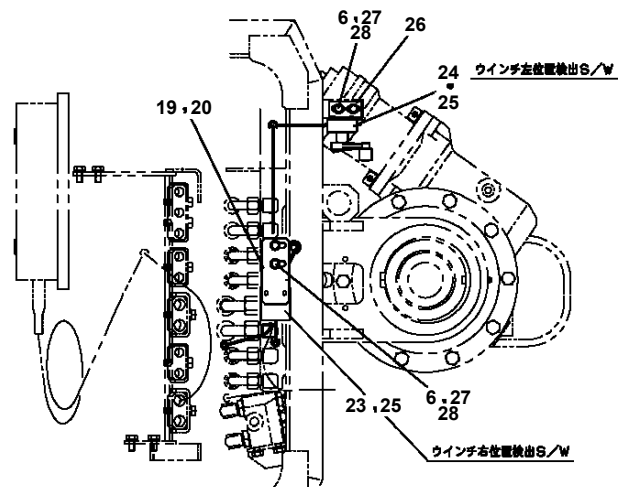
**AT-146-1 42095100065 UPPER
PM5150229-00 MODIFICATION ASSY (YURTEC TYPE, MOUNT FOR WINCH HOOK)**



**AT-146-1 42095100065 UPPER
PN1012671-00 ELEC.ASSY (BUCKET)**



A

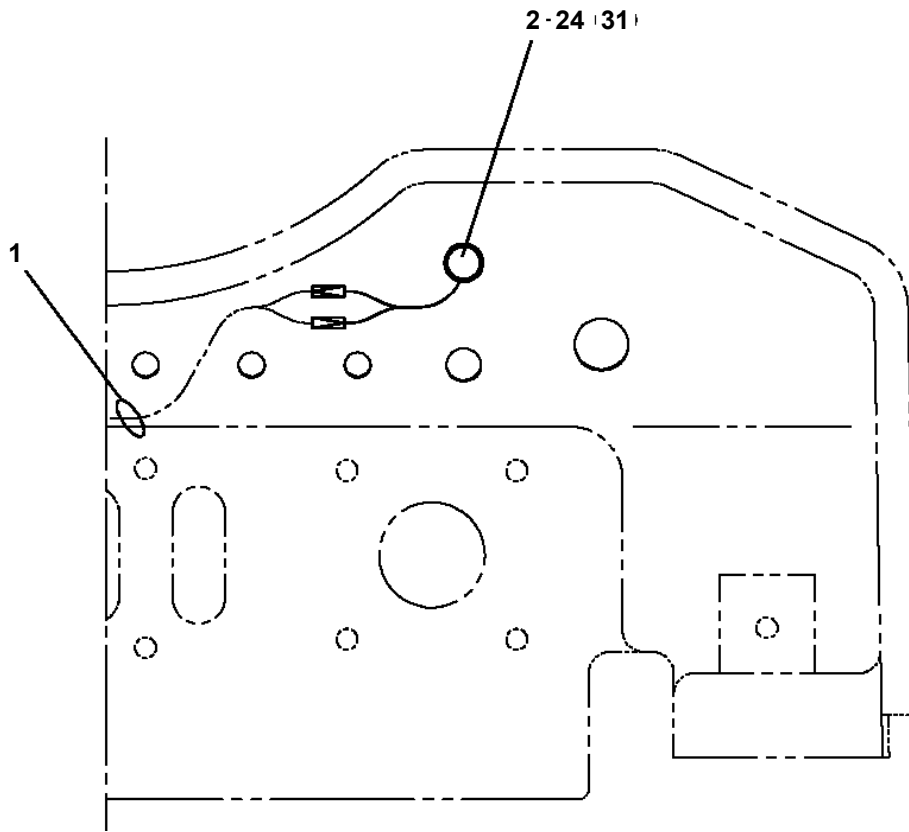


B-B

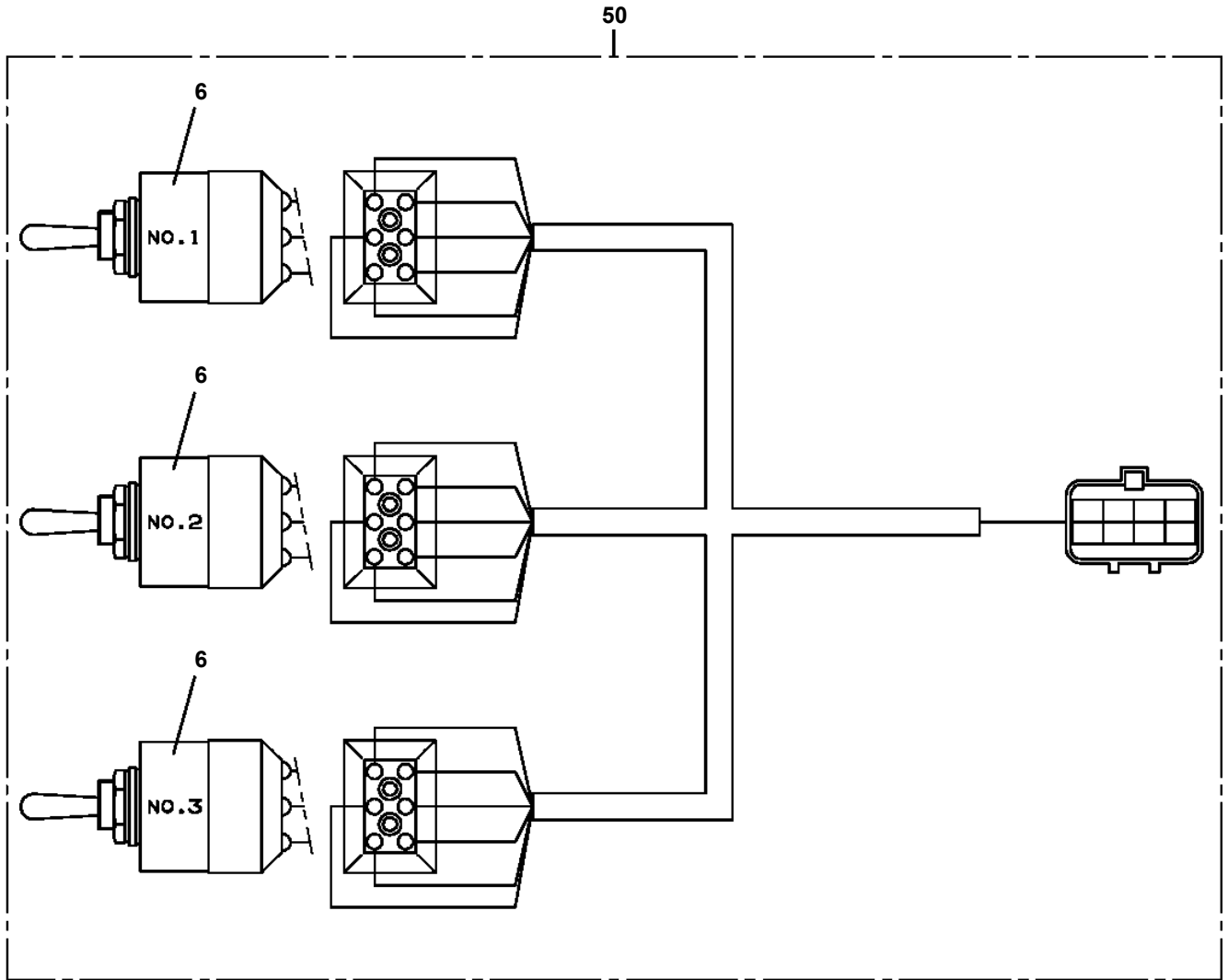
AT-146-1 42095100065 UPPER

Pos No.	Parts No	Parts Name	Qty	Unit	Technical Data	Serial No (Start)	Serial No
202	82100001836	FUSE	1		3A		
205	82100001840	FUSE	1		15A,BLUE		
207	82182809623	DIODE	1				

**AT-146-1 42095100065 UPPER
PN1080105-00 LAMP**



**AT-146-1 42095100065 UPPER
PN1140164-00 SWITCH ASSY (WITH HARNESS,3 SW)**



AT-146-1 4209510065 UPPER

Pos No.	Parts No	Parts Name	Qty	Unit	Technical Data	Serial No (Start)	Serial No (End)
1	36160755100	CONNECTOR	1				
2	36160755200	CABLE	1				
3	82100002004	CLAMP	2		WR8		227369
	82100002006	CLAMP	2		WR10	227370	
4	16318217000	GROMMET	1				
5	36160755500	REEL (BASE)	1				
6	36160205030	SPRING	1				
7	36160205040	RETAINER (BEARING)	1				
8	90131506016	BOLT,HEXAGON SOCKET	4		M6X16		227369
	90172206016	BOLT,HEXAGON SOCKET (DACRO)	4		M6X16	227370	
9	90302040601	WASHER,SPRING	9		6		
10	80515006008	BEARING,BALL	2				
11	36160205050	COLLAR	1				
12	80601110400	RING,RITAINING	1		S40		
13	36160205060	INSULATOR	5				
14	36160205070	RING,SLIP	4				
15	80562100070	WASHER,PLAIN	1		AW07		
16	80561100070	NUT	1		AN07		
17	82100001990	BRUSH	4				
18	36160756800	CASE (A)	1				
19	36160756900	CASE (B)	1				
20	36160205140	HANDLE	1				
21	90101206015	BOLT	5		M6X15		
23	36160757300	CABLE	1				
24	36160757400	CONNECTOR	1				
25	36160205100	GUIDE,SPRING	1				
26	90101206010	BOLT	2		M6X1.0		
27	90201200600	NUT	2		M6		
28	36160205120	SHOE,BRAKE	1				
29	90131506014	BOLT,HEXAGON SOCKET	2		M6X14		227369
	90172206014	BOLT,HEXAGON SOCKET	2		M6X14	227370	
50	36160750000	REEL,CORD	1				

AT-146-1 42095100065 UPPER

Pos No.	Parts No	Parts Name	Qty	Unit	Technical Data	Serial No (Start)	Serial No (End)	Remarks	Pages
1	36900285010	ARMATURE ASSY	1						
5	36900285020	YOKE ASSY	1						
7	36900285030	BRACKET (FRONT)	1						
10	36900285040	BRACKET (REAR)	1						
11	36900285050	BRUSH	2						
12	36900285060	SPRING (BRUSH)	4						
15	36900285070	COVER (BRUSH)	1						
50	36900280000	MOTOR,ELECTRIC	1						

AT-146-1 4209510065 UPPER

Pos No.	Parts No	Parts Name	Qty	Unit	Technical Data	Serial No (Start)	Serial No (End)	Remarks	Pages
1	42392583010	PLATE,NAME	1						
2	42331782090	PLATE,NAME	1						
3	42394923010	PLATE,NAME	1						
4	42331792040	PLATE,NAME	1						
5	42331782100	PLATE,NAME	1						
6	42391163120	PLATE,NAME	1						
7	42475721010	PLATE,NAME	1						
8	42393763020	PLATE,NAME	1						
9	42331322060	PLATE,NAME	1						
10	42331322050	PLATE,NAME	1						
11	42331322040	PLATE,NAME	1						
12	42331322030	PLATE,NAME	1						
13	42331322020	PLATE,NAME	1						
14	42331322010	PLATE,NAME	1						
15	42394783020	PLATE,NAME	1						
16	42331272010	PLATE,NAME	1						
17	42331272020	PLATE,NAME	1						
18	42331782110	PLATE,NAME	1						
19	42331272030	PLATE,NAME	1						
20	42394783060	PLATE,NAME	2						
21	42392583100	PLATE,CAUTION	1						
22	42392583110	PLATE,CAUTION	1						
23	42394782010	PLATE,CAUTION	1						
24	42391720040	PLATE,CAUTION	1						
25	42394783030	PLATE,NAME	1						
26	42394783050	PLATE,NAME	1						
27	42392653020	PLATE,NAME	1						
28	42394923020	PLATE,CAUTION	1						
29	42392583200	PLATE,CAUTION	1						

**AT-146-1 42095100065 UPPER
PO1080059-00 PLATE,NAME (LIVE-LINE WORKING DEVICE)**

当銘板については、弊社出先サービス員経由で御用命ください。

AT-146-1 42095100065 UPPER

Pos No.	Parts No	Parts Name	Qty	Unit	Technical Data	Serial No (Start)	Serial No (End)
100	36649190000	VALVE,REMOTE CONTROL	1				

AT-146-1 42095100065 UPPER

Pos No.	Parts No	Parts Name	Qty	Unit	Technical Data	Serial No (Start)	Serial No (End)	Remarks	Page
5	50815054503	PACKING	2						
6	36624970600	SPRING	2						
7	91002801800	O-RING	2		1B P18				
8	50815054703	PIN (STOP)	2						
9	36623835900	PLUG	2						
10	36624971100	SPACER	2						
100	36625000000	VALVE ASSY,CHECK	1						

AT-146-1 42095100065 UPPER

Pos No.	Parts No	Parts Name	Qty	Unit	Technical Data	Serial No (Start)	Serial No (End)	Remarks	Pages
1	42500010100	SUPPORT	1						
2	90101208012	BOLT	4		M8X12				
3	90302040801	WASHER,SPRING	4		8				
11	42500011100	SUPPORT	1						
12	37000581750	PLATE	2						

AT-146-1 42095100065 UPPER

Pos No.	Parts No	Parts Name	Qty	Unit	Technical Data	Serial No (Start)	Serial No (End)	R
1	42470180000	CLAMP HEAD (IZUMI 12TON 2.5M)	1					

AT-146-1 42095100065 UPPER

Pos No.	Parts No	Parts Name	Qty	Unit	Technical Data	Serial No (Start)	Serial No (End)
1	42471070000	CLAMP HEAD (O.D.K 10TON ELECTRIC)	1				

AT-146-1 4209510065 UPPER

Pos No.	Parts No	Parts Name	Qty	Unit	Technical Data	Serial No (Start)	Serial
1	42473857510	SCREW	4				
2	42473857515	SPRING	4				
3	80560053000	BALL,STEEL	4		1/8		
4	42470027510	HEAD (SCM)	1				
5	42473857530	SPRING	1				
6	42473857535	PIN	1				
7	42470027520	COLLAR	1				
8	42473857545	SPRING	1				
9	42473857550	PISTON	1				
10	91411003500	RING,BACKUP	1				
11	91001103500	O-RING	1		1A P35		
12	42470027530	CYLINDER	1				
13	42473857570	HOLDER	1				
14	42473857575	CAP	1				
15	91001101400	O-RING	1		1A P14		
16	42473857580	CAP	1				
17	42473857590	COVER	1				
18	42473857595	BUTTON (PUSH)	1				
19	42473857600	SPRING	1				
20	42473857605	SWITCH	1				
21	42473857610	HOLDER (SWITCH)	1				
22	42473857615	SCREW	1				
24	42473857620	BINDER	4				
25	42473857625	TUBE	1				
26	42473857630	TUBE	1				
27	42473857635	TUBE	1				
28	42473857640	BINDER	6				
29	42473857645	HOSE	1				
30	42473857650	JOINT	1				
31	42473857655	CABLE	1				
32	42473857660	PLUG (SANWA)	1				
38	80136320010	PIN,SPLIT	1		2X10		
39	42473857675	SEPARATOR	1				
61	42473857670	PROTECTOR ASSY	1				
62	42473857690	CLAMP ASSY	1				
100	42470021000	CLAMP HEAD (IZUMI 8TON,2.5M/YONDENKOU)	1				

AT-146-1 42095100065 UPPER

Pos No.	Parts No	Parts Name	Qty	Unit	Technical Data	Serial No (Start)	Serial No (End)
1	42470330000	ROPE (SAFETY,YELLOW:TD-TYPE)	1				

AT-146-1 42095100065 UPPER

Pos No.	Parts No	Parts Name	Qty	Unit	Technical Data	Serial No (Start)	Serial No (End)	Remarks	Pages
1	42470121000	ARM ASSY	1						
2	42470122000	HOLDER	3						
3	42470123000	CLAMP ASSY	1						
4	42470044000	HOT STICK	1						
5	42470045000	SUPPORT	1						
6	90101216130	BOLT	1		M16X130				
7	90303071601	WASHER,PLAIN	2		16				
8	90201201600	NUT	2		M16				
9	42220011200	SUPPORT	1						
21	42470121100	ARM	1						
22	42470121200	CAP	2						

AT-146-1 42095100065 UPPER

Pos No.	Parts No	Parts Name	Qty	Unit	Technical Data	Serial No (Start)	Serial No (End)	Remarks	Pages
1	42470121000	ARM ASSY	1						
2	42470421000	HOLDER	3						
3	42470123000	CLAMP ASSY	1						
4	42470044000	HOT STICK	1						
5	42475751001	SUPPORT	1						
6	90101216140	BOLT	1		M16X140				
7	90303071601	WASHER,PLAIN	2		16				
8	90201201600	NUT	2		M16				
9	42220011200	SUPPORT	1						
21	42470121100	ARM	1						
22	42470121200	CAP	2						

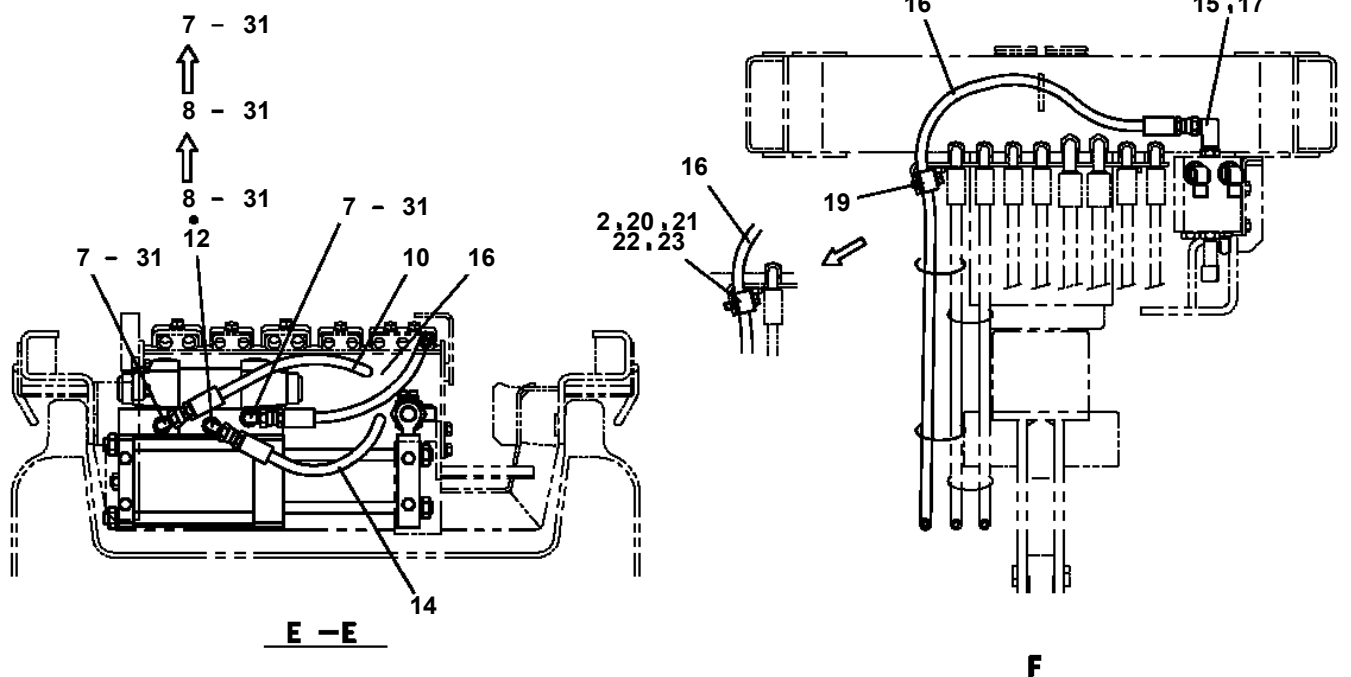
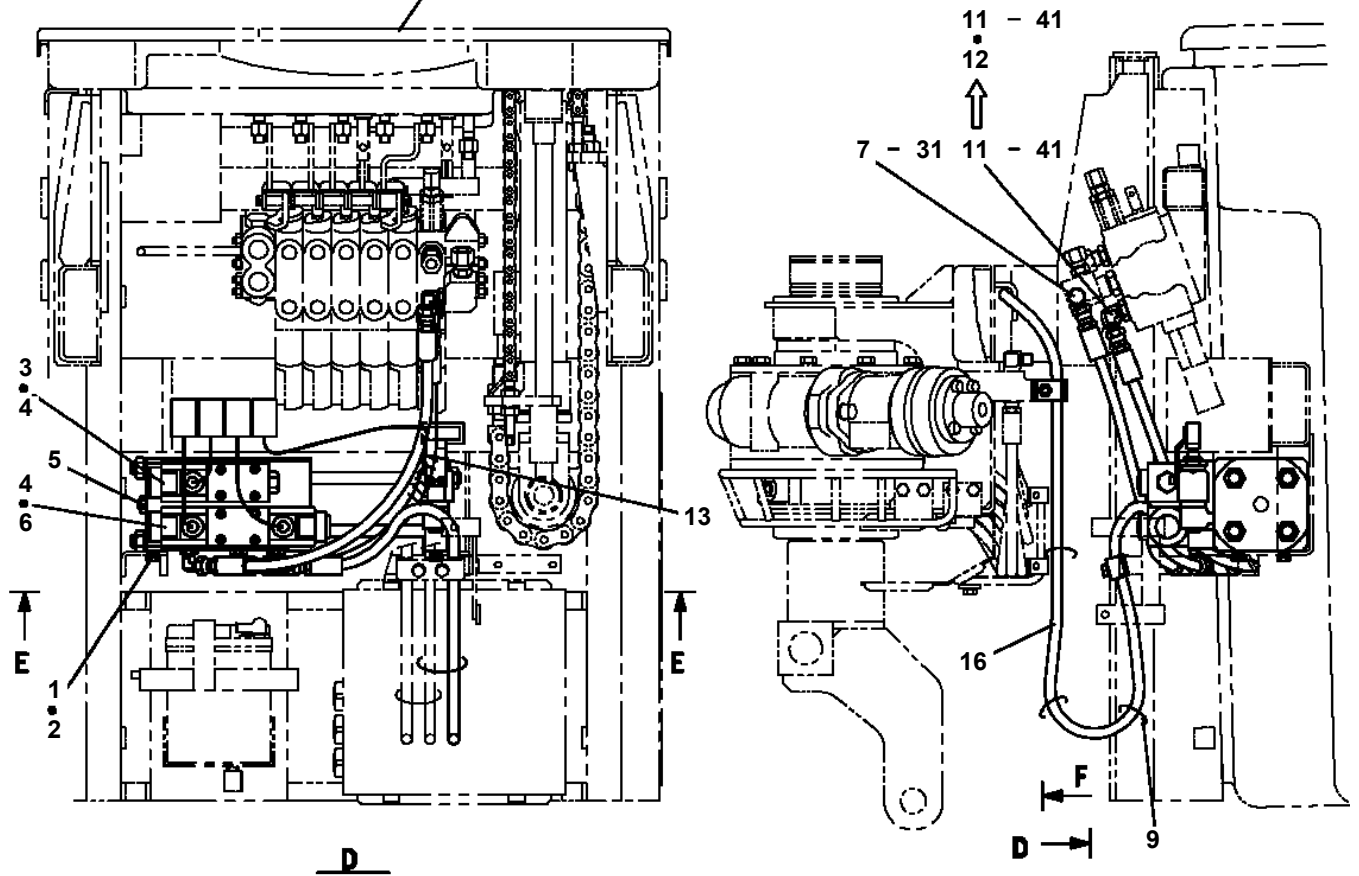
AT-146-1 42095100065 UPPER

Pos No.	Parts No	Parts Name	Qty	Unit	Technical Data	Serial No (Start)	Serial No (End)	Remarks	Pages
1	42479050010	PLATE	2						
2	90171110018	BOLT	4		M10X18				
3	90302041001	WASHER,SPRING	4		10				
4	42479050100	SUPPORT	1						
5	42479050200	SUPPORT	1						
6	42392583050	PLATE,NAME	2						

AT-146-1 42095100065 UPPER
 PY1160089-03 BOOSTER (AIR&ELECTRIC)

動力ジブの場合

SEE ELEC. ASSY (BUCKET)



AT-146-1 42095100065 UPPER

Pos No.	Parts No	Parts Name	Qty	Unit	Technical Data	Serial No (Start)	Serial No (End)	Re
1	42478182010	PLATE,NAME	1					
2	42736070100	SWITCH ASSY (WITH HARNESS)	1					
3	42476303100	CABLE ASSY	1		L=1000			
4	42392583090	PLATE,CAUTION	1					
5	82100001802	TUBE,CORRUGATE	1	M	10			
6	42478151100	HARNESS	1					
7	82100000665	CAP (BLACK)	1					
8	91810132530	FASTENER	20					
9	82100001411	TUBE,SPIRAL	1	M	SE-08BK	228070		
21	82105220112	SWITCH,TOGGLE	1					
36	82117920411	CONNECTOR	1					
37	82122910400	CAP	1					

AT-146-1 42095100065 UPPER

Pos No.	Parts No	Parts Name	Qty	Unit	Technical Data	Serial No (Start)	Serial No (End)	Re
1	(*****)	BOOSTER (AIR&ELECTRIC)	1					
2	(*****)	BOOSTER (WIRING/AIR)	1					
3	(*****)	BOOSTER (PIPING/AIR&ELECTRIC)	1					

AT-146-1 42095100065 UPPER

Pos No.	Parts No	Parts Name	Qty	Unit	Technical Data	Serial No (Start)	Serial No (End)
1	(*****)	BOOSTER (AIR&ELECTRIC)	1				
2	(*****)	BOOSTER (WIRING/AIR SELECTOR)	1				
3	(*****)	BOOSTER (PIPING/AIR&ELEC.SELECT.)	1				

AT-146-1 42095100065 UPPER

Pos No.	Parts No	Parts Name	Qty	Unit	Technical Data	Serial No (Start)	Serial No (End)	Remarks	Pages
2	90101208020	BOLT	4		M8X20				
3	90302040801	WASHER,SPRING	4		8				
4	90303070801	WASHER,PLAIN	4		8				
11	42476181100	SUPPORT	1						
12	42476181300	SUPPORT	1						
13	90813108020	BOLT,WING	2		M8X20				

AT-146-1 42095100065 UPPER

Pos No.	Parts No	Parts Name	Qty	Unit	Technical Data	Serial No (Start)	Serial
1	42470367770	HOSE,AIR	1		3M		
2	42470362100	JOINT,SELF SEALING	1				
3	42470362200	PUMP	1				
4	42470367780	JOINT	1				
10	42471561000	HOSE,BOOSTER (SMALL,WITH AIR BALLOON)	1				

AT-146-1 42095100065 UPPER

Pos No.	Parts No	Parts Name	Qty	Unit	Technical Data	Serial No (Start)	Serial No (End)
1	42471271000	DRILL ASSY	1				
2	80460003080	JOINT	2		S,G3/8-3/4-16UNF		
3	37002425110	HOSE	2		L=2500		
4	91810132530	FASTENER	4				
5	80456020610	JOINT,SELF SEALING	1				
6	42340013200	JOINT,SELF SEALING (WITH CAP)	1				
11	42340017550	CAP (DUST)	1				
16	42340017510	CAP (DUST)	1				
20	42471270000	DRIL,HYDRAULIC	1				

AT-146-1 42095100065 UPPER

Pos No.	Parts No	Parts Name	Qty	Unit	Technical Data	Serial No (Start)	Serial No (End)	Remarks	Pages
1	42474970100	PLATE	2						

AT-146-1 42095100065 UPPER

Pos No.	Parts No	Parts Name	Qty	Unit	Technical Data	Serial No (Start)	Serial No (End)	Remarks
1	42472530000	BOX,TOOL (FOR BUCKET)	1					

CLICK HERE TO **DOWNLOAD** THE COMPLETE MANUAL

- Thank you very much for reading the preview of the manual.
- You can download the complete manual from: www.heydownloads.com by clicking the link below



- Please note: If there is no response to CLICKING the link, please download this PDF first and then click on it.

CLICK HERE TO **DOWNLOAD** THE COMPLETE MANUAL