

AT-146-1 42095100062 UPPER

PD2000051-00 SWING UNIT
PF1000465-02 WINCH SYSTEM
PG2000059-00 BOOM UNIT
PH1000399-00 SAFETY DEVICES
PJ3000235-00 BUCKET SYSTEM
PJ5000003-00 BOOSTER UNIT
PK2000246-00 FRAME UNIT
PO1000131-03 INDICATION PLATES
PY1000658-05 OPTIONS,1
PY2000026-00 OPTIONS,2
ASSEMBLY

CLICK HERE TO **DOWNLOAD** THE COMPLETE MANUAL

- Thank you very much for reading the preview of the manual.
- You can download the complete manual from: www.heydownloads.com by clicking the link below



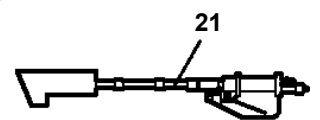
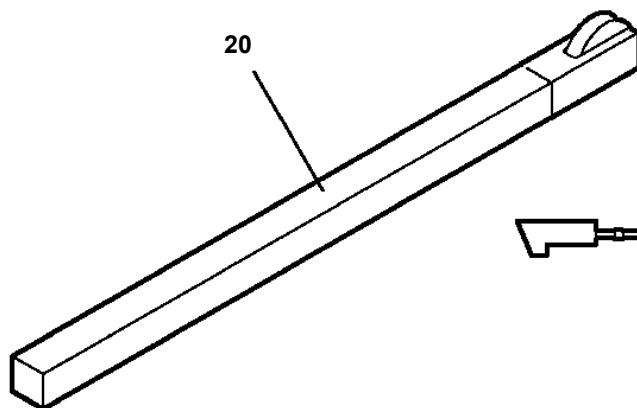
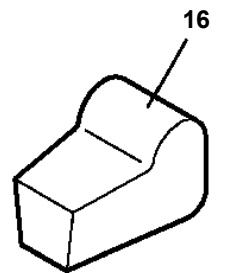
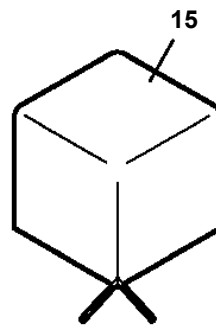
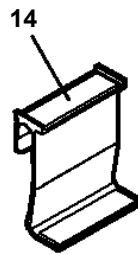
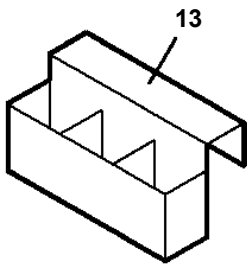
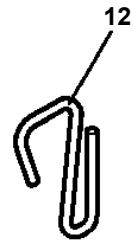
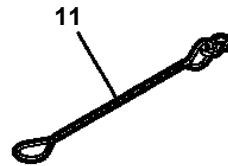
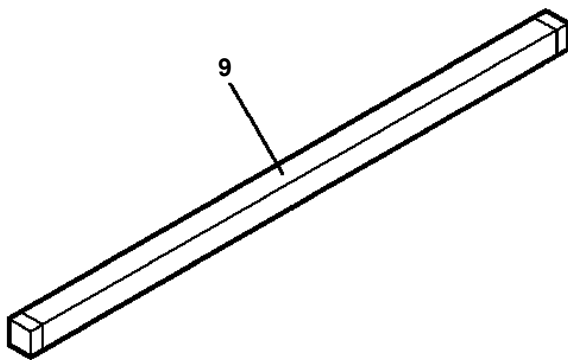
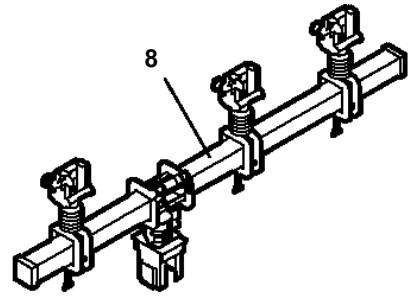
- Please note: If there is no response to CLICKING the link, please download this PDF first and then click on it.

CLICK HERE TO **DOWNLOAD** THE COMPLETE MANUAL

AT-146-1 42095100062 UPPER

| Pos No. | Parts No | Parts Name | Qty | Unit | Technical Data | Serial No (Start) | Serial No (End) |
|---------|-------------|--------------------------------|-----|------|----------------|-------------------|-----------------|
| 1 | (*****) | FRAME | 1 | | | | |
| 2 | (*****) | PIPING (BUCKET) | 1 | | | | |
| 3 | (*****) | ELEC.ASSY (BUCKET) | 1 | | | | |
| 4 | (*****) | OPE.ASSY | 1 | | | | |
| 5 | (*****) | PIPING,GREASE (BUCKET) | 1 | | | | 227373 |
| | (*****) | PIPING,GREASE | 1 | | | 227374 | |
| 6 | (*****) | LAMP | 1 | | | | |
| 11 | (*****) | BUCKET | 1 | | | | |
| 12 | (*****) | BUCKET (INNER CASE) | 1 | | | | |
| 13 | (*****) | COVER (FRP,WHITE) | 1 | | | | 227380 |
| | (*****) | COVER (FRP,WHITE) | 1 | | | 227381 | |
| 14 | (*****) | COVER,BOOM (TOP/FRP,WHITE) | 1 | | | | |
| 15 | 42264603000 | COVER (CLOTH,WHITE) | 1 | | | | |
| 16 | 42470341000 | ACCESSORIES (BUCKET INNER MAT) | 1 | | | | |

AT-146-1 42095100062 UPPER
PY2000026-00 OPTIONS,2



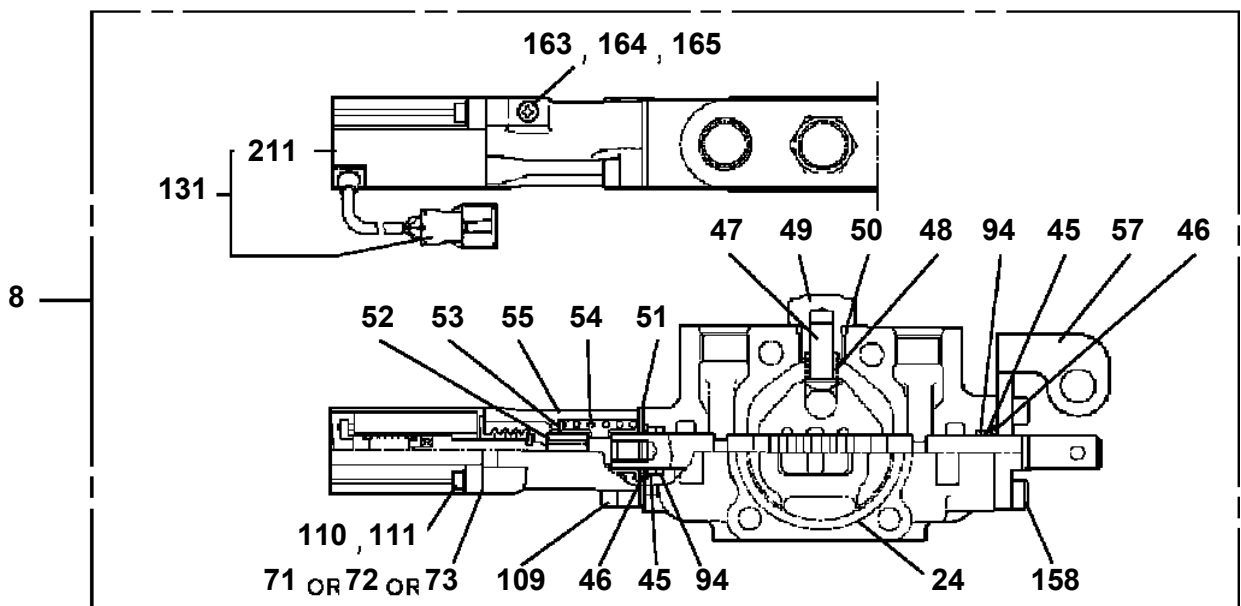
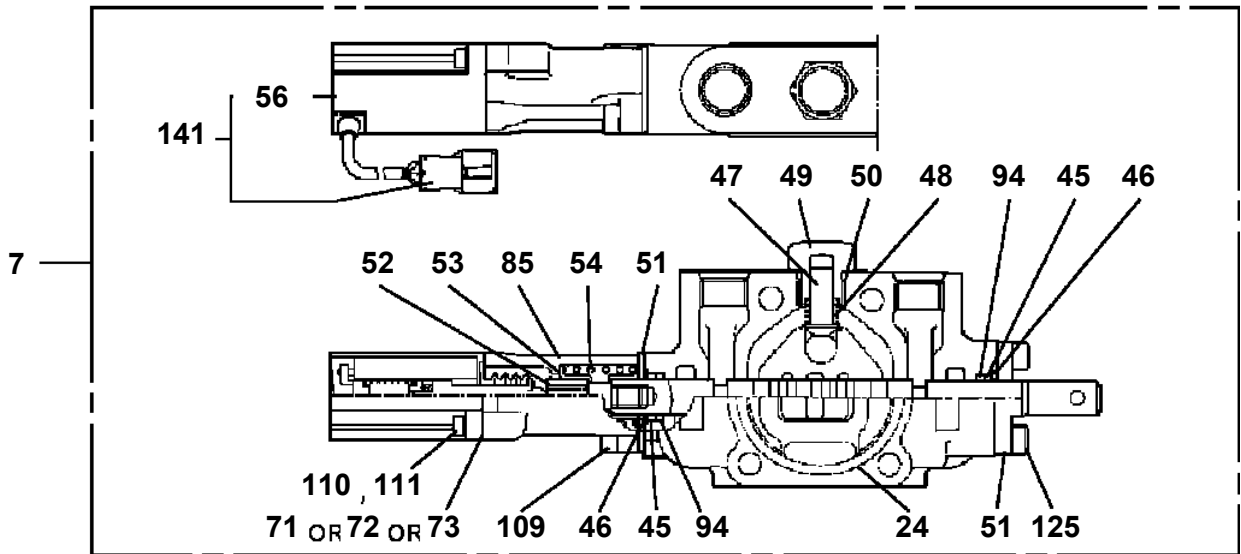
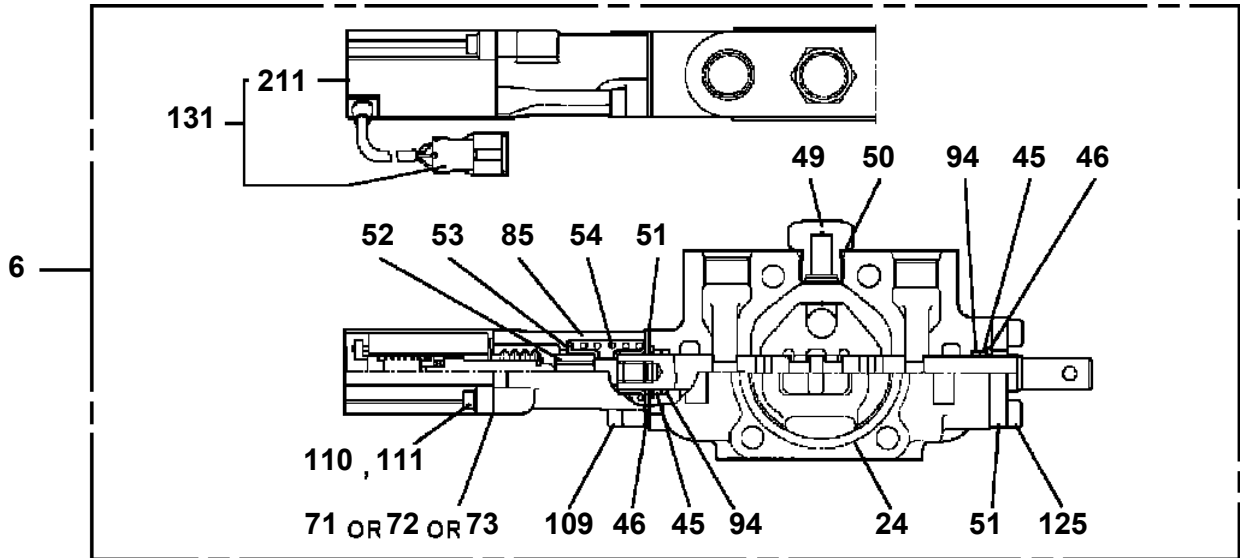
AT-146-1 42095100062 UPPER

| Pos No. | Parts No | Parts Name | Qty | Unit | Technical Data | Serial No (Start) | Serial No (End) | Remarks | Pages |
|---------|-------------|----------------|-----|------|----------------|-------------------|-----------------|---------|-------|
| 10 | 36653850000 | PUMP,HYDRAULIC | 1 | | | | | | |

AT-146-1 4209510062 UPPER

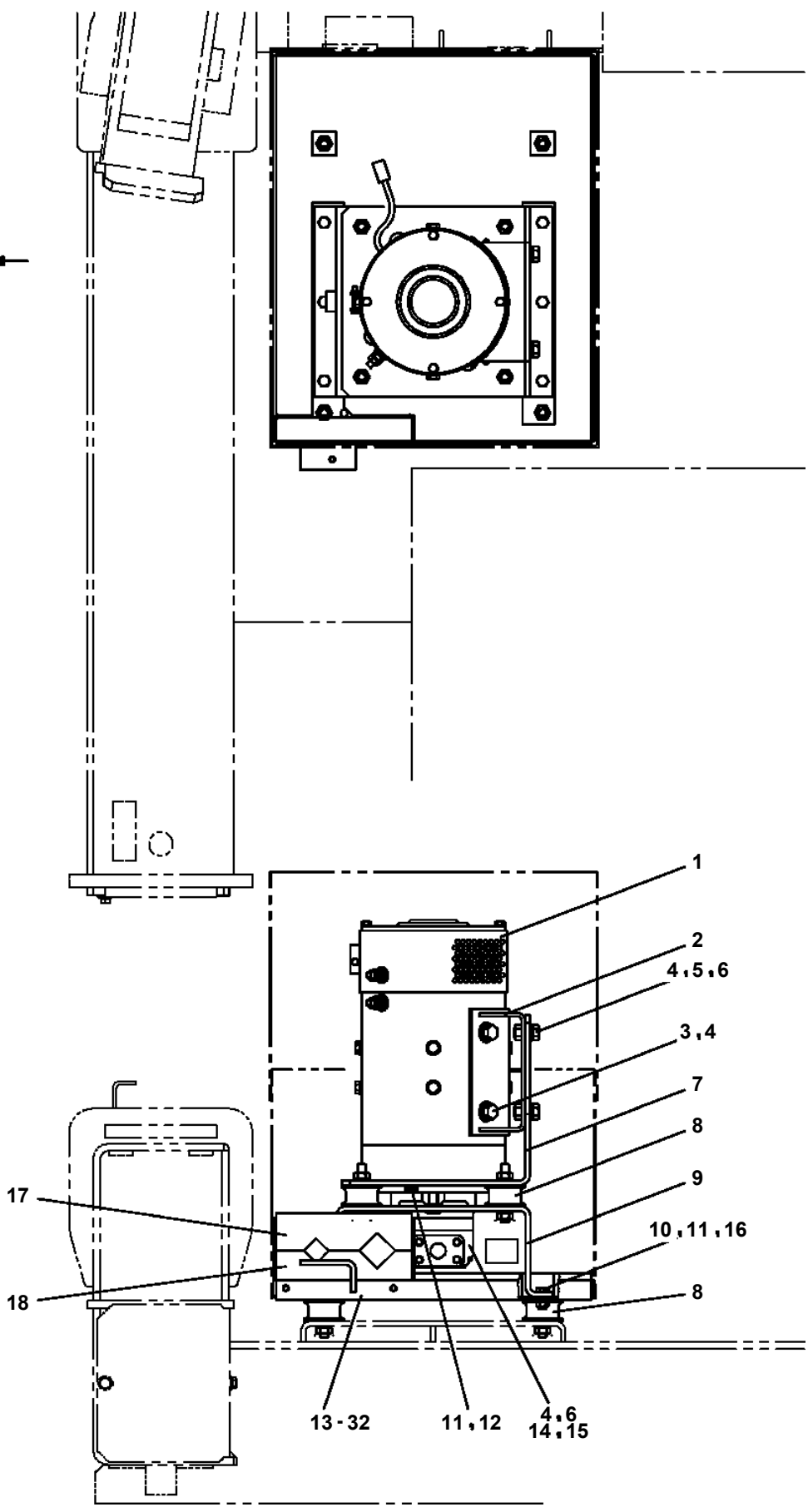
| Pos No. | Parts No | Parts Name | Qty | Unit | Technical Data | Serial No (Start) | Serial No (End) | Remark |
|---------|-------------|---------------------------|-----|------|----------------|-------------------|-----------------|--------|
| 2 | 42630737510 | HOUSING | 1 | | | | | |
| 3 | 42630617630 | O-RING | 1 | | | | | |
| 12 | 42630617570 | RETAINER (SHAFT A) | 1 | | | | | |
| 13 | 42630617580 | RETAINER (SHAFT B) | 1 | | | | | |
| 25 | 42630737550 | POTENTIOMETER | 1 | | | | | |
| 43 | 42630737590 | SENSOR (ANGLE) | 1 | | | | | |
| 51 | 82114101120 | CONNECTOR | 1 | | | | | |
| 52 | 82111101018 | TERMINAL | 9 | | | | | |
| 53 | 82121102120 | HOLDER | 1 | | | | | |
| 54 | 82121101009 | PLUG (GREEN) | 5 | | | | | |
| 55 | 82121101050 | PLUG (BLACK/AV0.3 TO 0.5) | 9 | | | | | |
| 56 | 82114101040 | CONNECTOR (4P,MALE) | 2 | | | | | |
| 57 | 82111101010 | TERMINAL | 16 | | | | | |
| 58 | 82121102040 | HOLDER (4P,BOTH) | 4 | | | | | |
| 59 | 82114101030 | CONNECTOR (3P,MALE) | 1 | | | | | |
| 60 | 82121102030 | HOLDER (3P,BOTH) | 2 | | | | | |
| 61 | 82114101060 | CONNECTOR | 1 | | | | | |
| 62 | 82121102060 | HOLDER | 2 | | | | | |
| 63 | 82111101510 | TERMINAL | 16 | | | | | |
| 64 | 82114102030 | CONNECTOR (3P,FEMALE) | 1 | | | | | |
| 65 | 82114102040 | CONNECTOR (4P,FEMALE) | 2 | | | | | |
| 66 | 82114102060 | CONNECTOR | 1 | | | | | |
| 67 | 82121101085 | PLUG (AVS0.85) | 32 | | | | | |
| 100 | 42630761000 | BRUSH,ROTARY JOINT | 1 | | | | | |

**AT-146-1 42095100062 UPPER
PB1320572-01 VALVE, MANUAL CONTROL**



AT-146-1 42095100062 UPPER
PB1380108-00 POWER SUPPLY (MOTOR/MOUNT)

FRONT ←



AT-146-1 4209510062 UPPER

| Pos No. | Parts No | Parts Name | Qty | Unit | Technical Data | Serial No (Start) | Serial No (End) | Remarks |
|---------|-------------|-----------------------|-----|------|----------------|-------------------|-----------------|---------|
| 1 | 42881431000 | SUPPORT | 1 | | | | | |
| 2 | 36102590000 | TANK,OIL | 1 | | | | | |
| 3 | 42880550100 | BAND | 2 | | | | | |
| 4 | 56560009000 | PIN | 2 | | | | | |
| 5 | 80136330025 | PIN,SPLIT | 2 | | | | | |
| 6 | 90303071201 | WASHER,PLAIN | 2 | | 12 | | | |
| 7 | 90301021001 | WASHER | 2 | | | | | |
| 8 | 90201201000 | NUT | 5 | | M10 | | | |
| 9 | 37002470190 | HOSE | 1 | | L=550 | | | |
| 10 | 91001204500 | O-RING | 1 | | 1A G45 | | | |
| 11 | 91002802900 | O-RING | 1 | | 1B P29 | | | |
| 12 | 90101208016 | BOLT | 6 | | M8X16 | | | |
| 13 | 90302040801 | WASHER,SPRING | 6 | | 8 | | | |
| 14 | 36672280000 | FILTER,OIL (YAMASHIN) | 1 | | | | | |
| 15 | 42881390200 | FITTING,FLANGE | 1 | | | | | |
| 16 | 90280200800 | NUT,FLANGE | 4 | | M8 | | | |
| 17 | 37000547660 | PLATE | 4 | | T=2.3 | | | |
| 19 | 90101210020 | BOLT | 2 | | M10X20 | | | |
| 20 | 90302041001 | WASHER,SPRING | 3 | | 10 | | | |
| 21 | 90303071001 | WASHER,PLAIN | 1 | | 10 | | | |
| 22 | 90101210025 | BOLT | 1 | | M10X25 | | | |
| 23 | 37000600520 | CLAMP | 1 | | R=22 | | | |
| 24 | 42881390020 | SUPPORT | 1 | | | | | |
| 25 | 37000551620 | PLATE | 1 | | | | | |
| 26 | 90303070801 | WASHER,PLAIN | 2 | | 8 | | | |
| 41 | 42881392100 | JOINT | 1 | | | | | |
| 42 | 36625130000 | VALVE,CHECK | 2 | | | | | |
| 43 | 80400160131 | JOINT | 1 | | | | | |
| 44 | 91002801800 | O-RING | 6 | | 1B P18 | | | |
| 45 | 80316070080 | PLUG | 1 | | PF1/2 | | | |
| 46 | 80316070060 | PLUG | 2 | | PF3/8 | | | |
| 47 | 91002801400 | O-RING | 4 | | 1B P14 | | | |
| 48 | 80430620600 | JOINT (WITH O-RING) | 1 | | L,G3/8-G3/8 | | | |
| 49 | 80400160129 | JOINT | 1 | | | | | |
| 50 | 80316070040 | PLUG | 1 | | PF1/4 | | | |
| 51 | 91002801100 | O-RING | 1 | | 1B P11 | | | |
| 52 | 42643051000 | SWITCH ASSY (THERMO) | 1 | | | | | |
| 71 | 82109902020 | SWITCH,THERMO | 1 | | | | | |

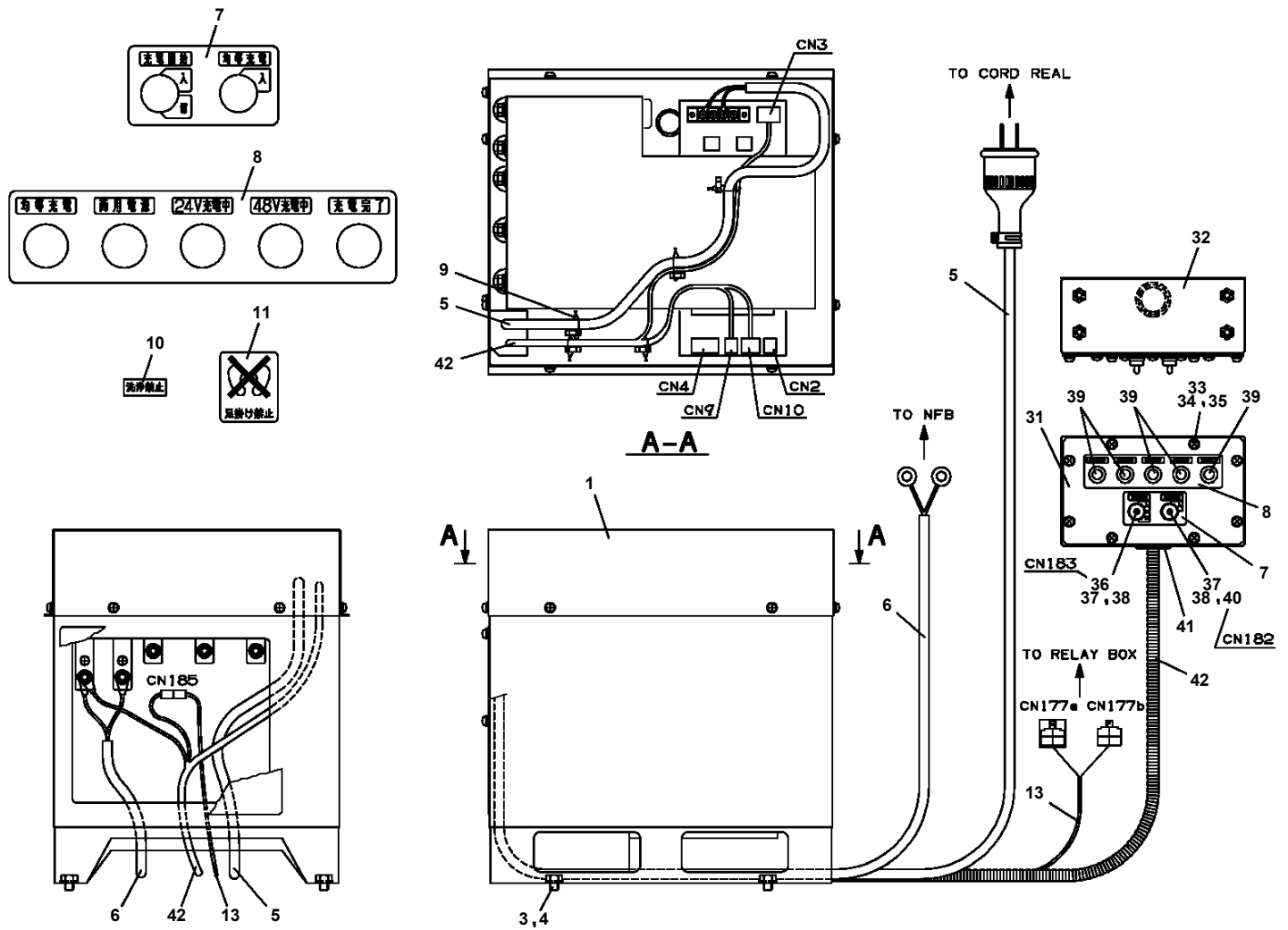
AT-146-1 4209510062 UPPER

| Pos No. | Parts No | Parts Name | Qty | Unit | Technical Data | Serial No (Start) | Serial No (End) |
|---------|-------------|--------------------------------|-----|------|----------------|-------------------|-----------------|
| 1 | 42612851000 | OUTRIGGER (FRONT,L/INNER CASE) | 1 | | | | |
| 2 | 42612853000 | OUTRIGGER (FRONT,R/INNER CASE) | 1 | | | | |
| 4 | 31611640150 | SPRING | 2 | | | | |
| 5 | 90171108016 | BOLT | 4 | | M8X16 | | |
| 6 | 37000504780 | PLATE | N | | T=0.6 | | |
| 7 | 90302041001 | WASHER,SPRING | 16 | | 10 | | |
| 8 | 90186208010 | BOLT,FLANGE | 4 | | M8X10 | | |
| 9 | 42612850300 | PLATE | 2 | | | | |
| 11 | 90101206014 | BOLT | 4 | | M6X14 | | |
| 12 | 90302040601 | WASHER,SPRING | 4 | | 6 | | |
| 13 | 42612850400 | BLADE | 1 | | | | |
| 14 | 42612850010 | SUPPORT | 2 | | | | |
| 16 | 42612850200 | PLATE | 8 | | T=6 | | |
| 17 | 90101210016 | BOLT | 16 | | M10X16 | | |
| 18 | 37000501960 | PLATE | N | | T=0.5 | 227415 | 227414 |
| | 37000581940 | PLATE | N | | T=0.5 | | |
| 19 | 37000501970 | PLATE | N | | T=1.5 | | 227414 |
| | 37000506590 | PLATE | N | | T=1.6 | 227415 | |
| 20 | 90303070601 | WASHER,PLAIN | 4 | | 6 | | |
| 21 | 37002011280 | PLATE,SLIDE | 12 | | T=9.5 | | |
| 22 | 90101208012 | BOLT | 4 | | M8X12 | | |
| 23 | 90302040801 | WASHER,SPRING | 4 | | 8 | | |
| 24 | 37000575240 | PLATE | 2 | | T=3 | | |
| 25 | 37000178190 | PIN | 2 | | | | |
| 26 | 42612850100 | PLATE | 2 | | | | |
| 27 | 42612850120 | BLADE | 1 | | | | |

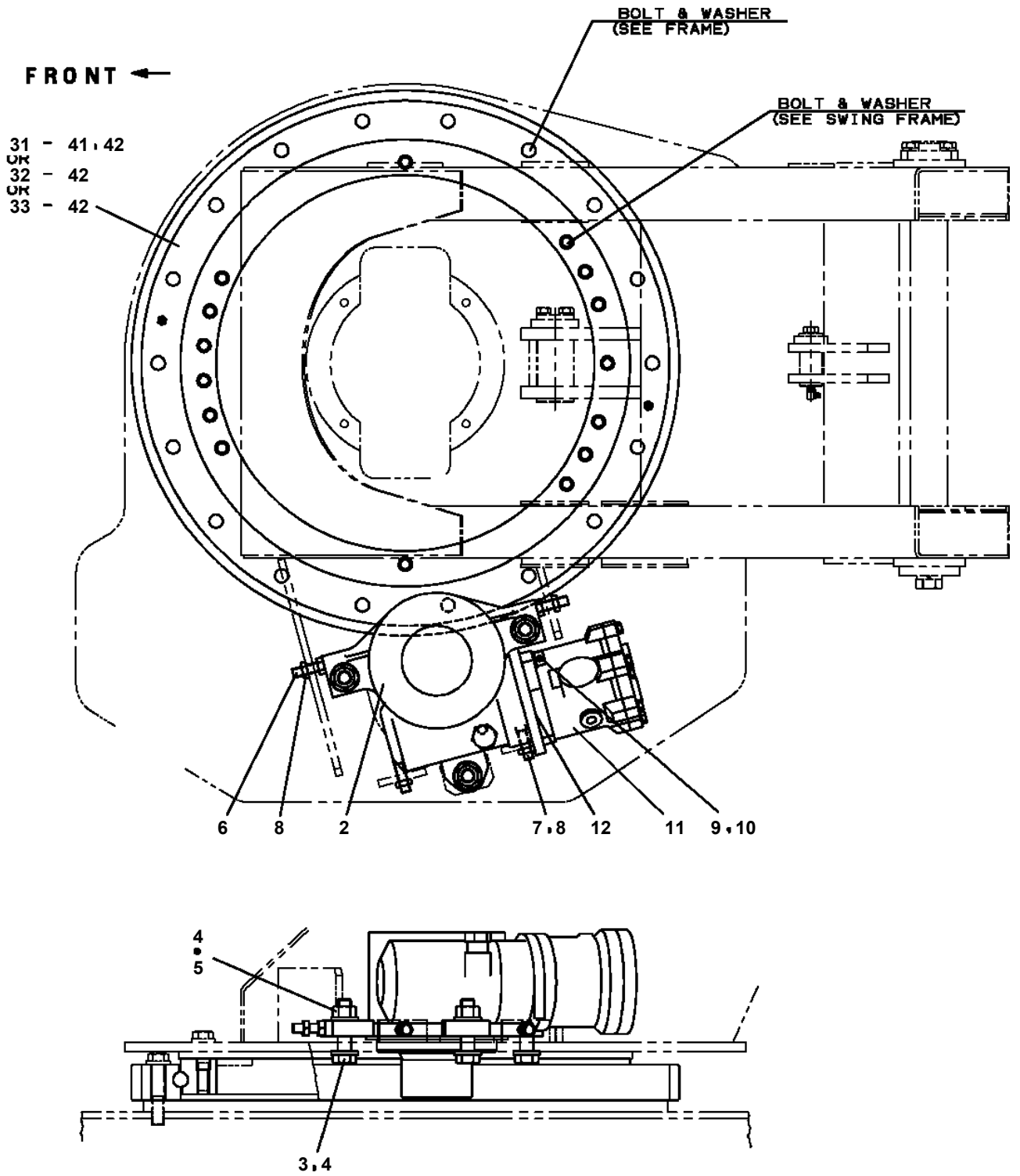
AT-146-1 42095100062 UPPER

| Pos No. | Parts No | Parts Name | Qty | Unit | Technical Data | Serial No (Start) | Serial No (End) | Remarks |
|---------|-------------|----------------------|-----|------|----------------|-------------------|-----------------|---------|
| 1 | 36637490000 | VALVE,MANUAL CONTROL | 1 | | | | | |
| 2 | 90101208025 | BOLT | 3 | | M8X25 | | | |
| 3 | 90302040801 | WASHER,SPRING | 3 | | 8 | | | |
| 4 | 32700007500 | LEVEL | 1 | | | | | |
| 5 | 42701200100 | LEVER | 1 | | | | | |
| 6 | 42701200200 | LEVER | 1 | | | | | |
| 7 | 42701200300 | LEVER | 1 | | | | | |
| 8 | 42701200400 | LEVER | 1 | | | | | |
| 9 | 42701200500 | LEVER | 1 | | | | | |
| 10 | 31323330200 | KNOB (RED) | 1 | | | | | |
| 11 | 31323330100 | KNOB (BLACK) | 4 | | | | | |
| 12 | 37000105610 | PIN | 10 | | L=18 | | | |
| 13 | 90303070501 | WASHER,PLAIN | 10 | | 5 | | | |
| 14 | 80136320010 | PIN,SPLIT | 10 | | 2X10 | | | |

AT-146-1 42095100062 UPPER PC5210004-00 CHARGER ASSY (100V/YONDEN)

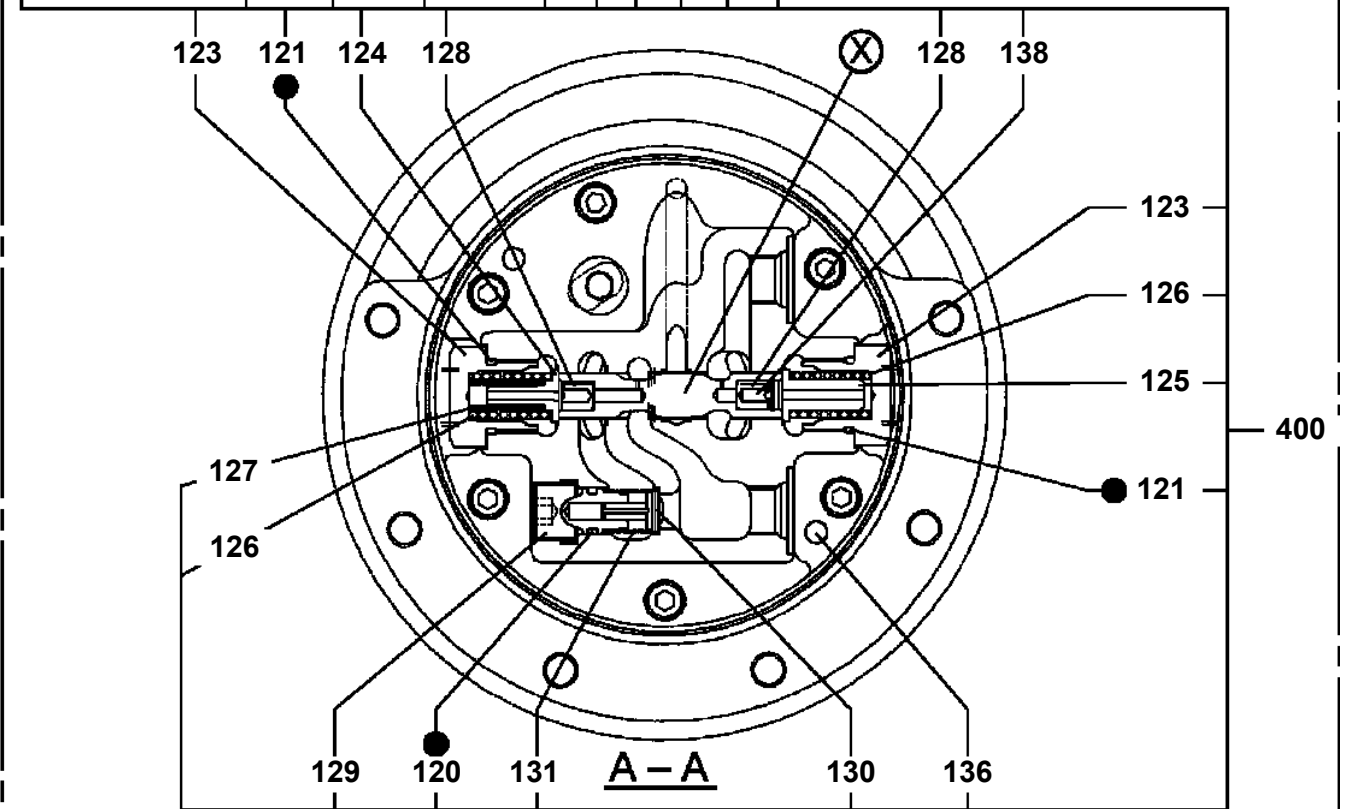
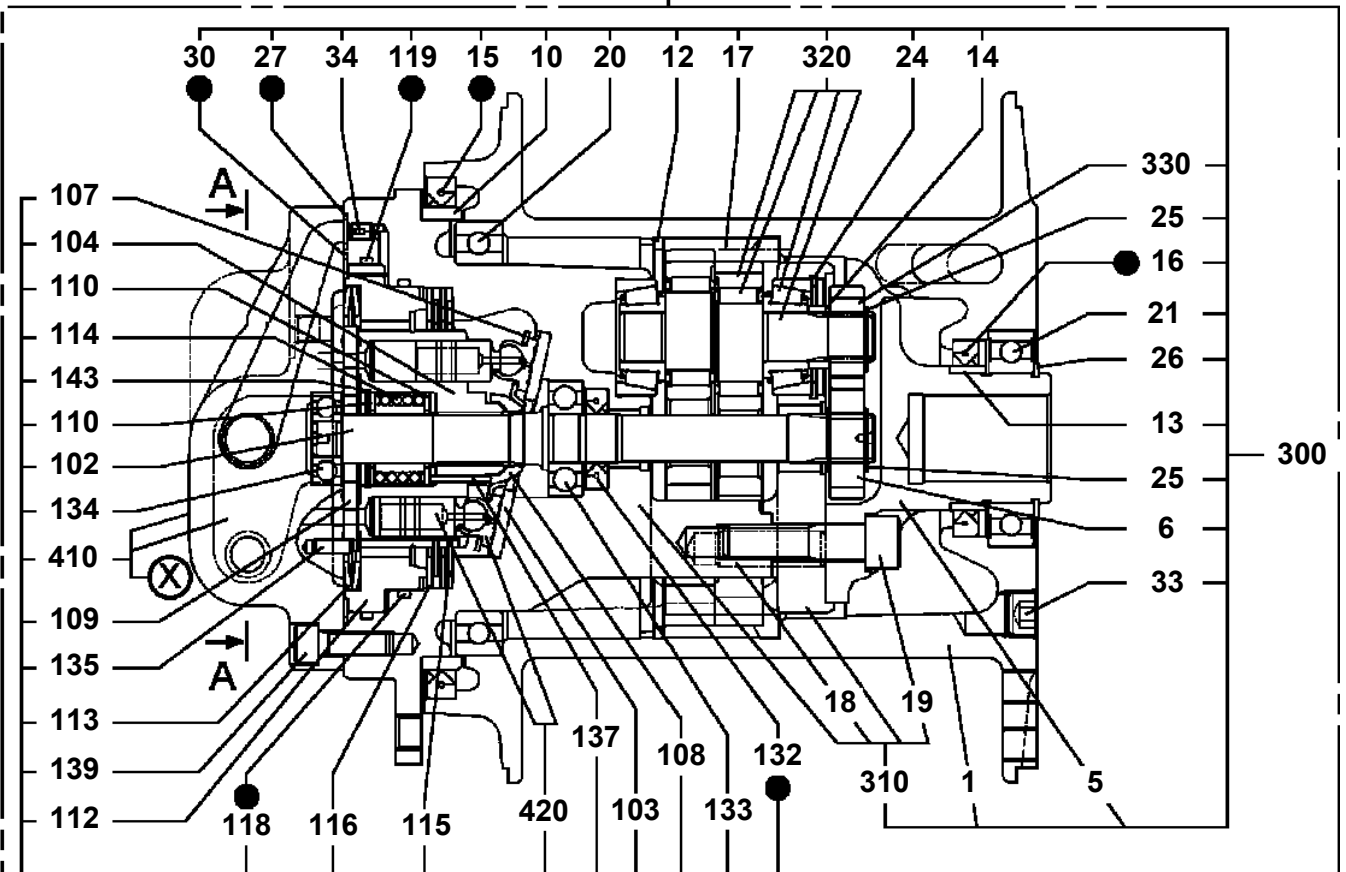


**AT-146-1 42095100062 UPPER
PD1020021-01 SWING UNIT**



AT-146-1 42095100062 UPPER
PF1010392-01 WINCH

500



● : SEAL KIT KEY NO 490 (KEY NO.15,16,27,30,118,119,120,121,132)

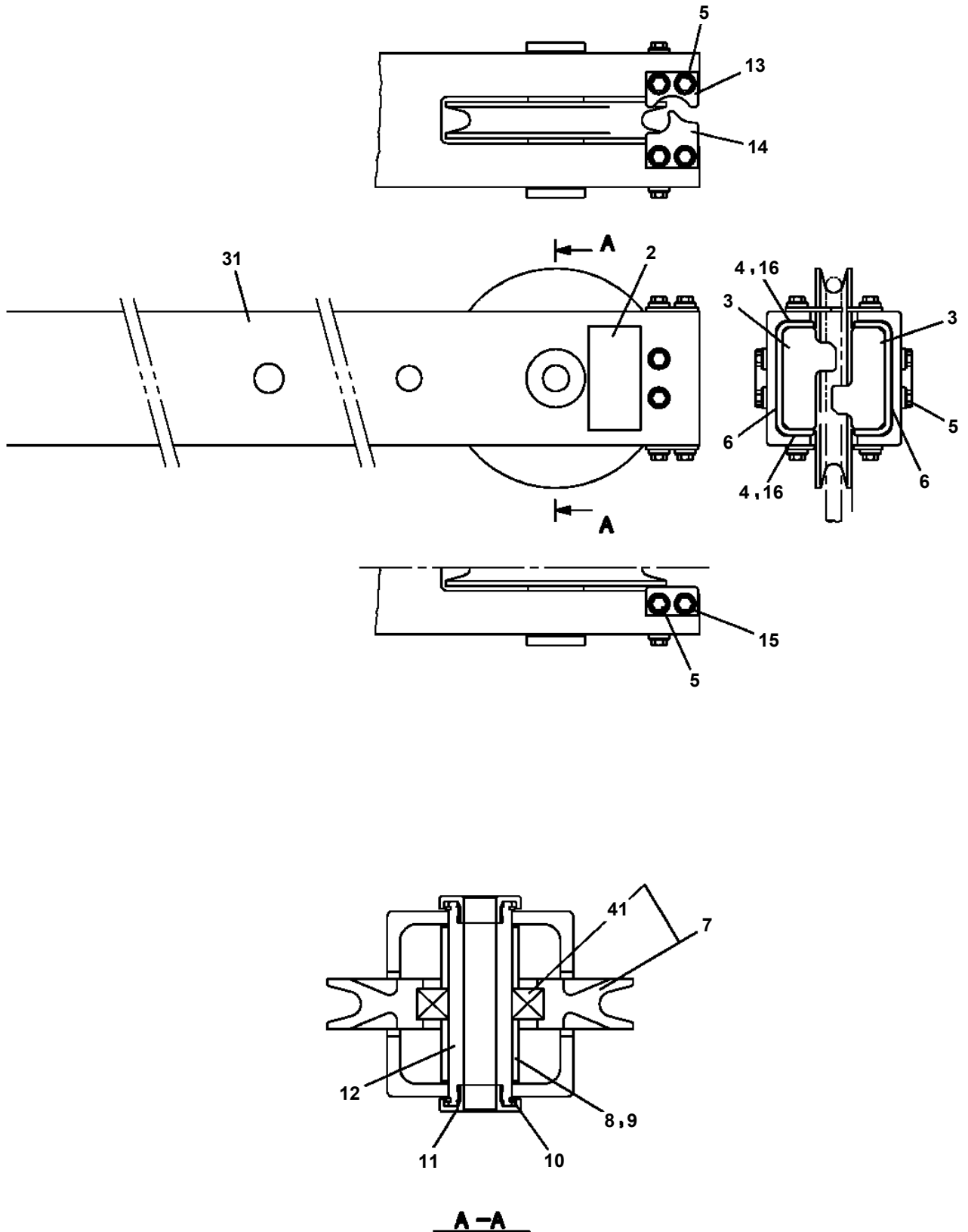
AT-146-1 42095100062 UPPER

| Pos No. | Parts No | Parts Name | Qty | Unit | Technical Data | Serial No (Start) | Serial No (End) | Remarks | Pages |
|---------|-------------|--------------|-----|------|----------------|-------------------|-----------------|---------|-------|
| 1 | 42478760010 | SUPPORT | 1 | | | | | | |
| 2 | 90201201600 | NUT | 1 | | M16 | | | | |
| 3 | 90303071601 | WASHER,PLAIN | 1 | | 16 | | | | |

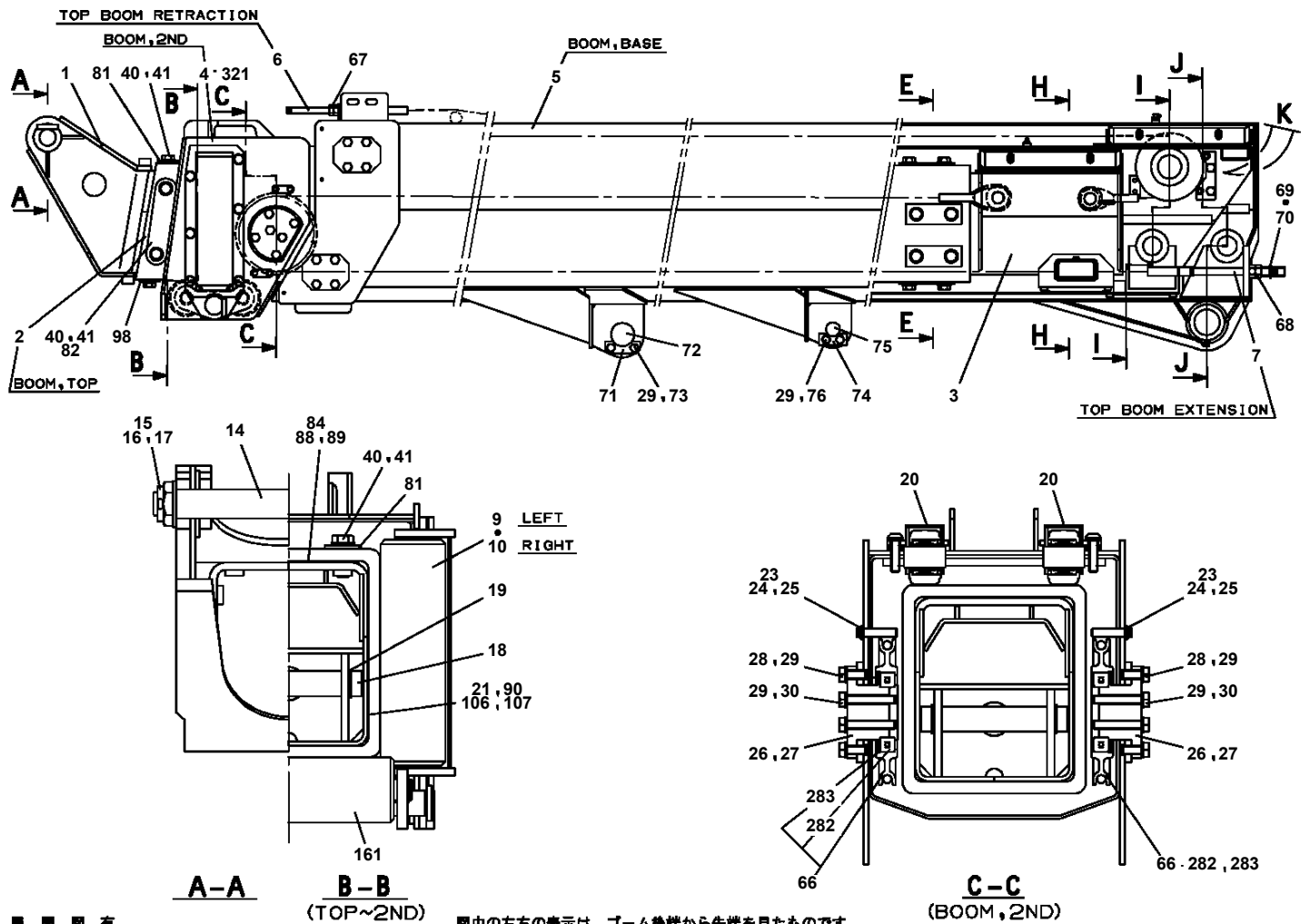
AT-146-1 42095100062 UPPER

| Pos No. | Parts No | Parts Name | Qty | Unit | Technical Data | Serial No (Start) | Serial No (End) | Remarks | Pages |
|---------|-------------|----------------|-----|------|----------------|-------------------|-----------------|---------|-------|
| 2 | 42220041050 | PLATE,NAME | 2 | | | | | | |
| 3 | 42220400010 | GUIDE | 1 | | | | | | |
| 4 | 42220400020 | GUIDE | 1 | | | | | | |
| 5 | 90183106020 | BOLT | 8 | | M6X20 | | | | |
| 6 | 90201200600 | NUT | 8 | | M6 | | | | |
| 7 | 37001002260 | SHEAVE | 1 | | | | | | |
| 8 | 37000312170 | SPACER | 2 | | | | | | |
| 9 | 37000302490 | SPACER | 2 | | L=2 | | | | |
| 10 | 80603110350 | RING,RITAINING | 2 | | C35 | | | | |
| 11 | 42220400040 | COVER | 2 | | | | | | |
| 12 | 42220400050 | PIN | 1 | | | | | | |
| 13 | 42220400030 | GUIDE | 2 | | | | | | |
| 14 | 42220420201 | JIB | 1 | | | | | | |
| 31 | 80516006207 | BEARING,BALL | 1 | | | | | | |

AT-146-1 42095100062 UPPER
PF1350087-00 WINCH,JIB (FRP,INSULATION,GRAY)



AT-146-1 42095100062 UPPER PG1010727-02 BOOM



展開図有

ILLUSTRATED BREAKDOWN NO. 5, 9, 10, 20, 161 51

図中の左右の表示は、ブーム後端から先端を見たものです。

THE RIGHT AND LEFT IN FIGURE ARE THE EXPRESSION THAT SEES FROM BOOM END TO TOP.

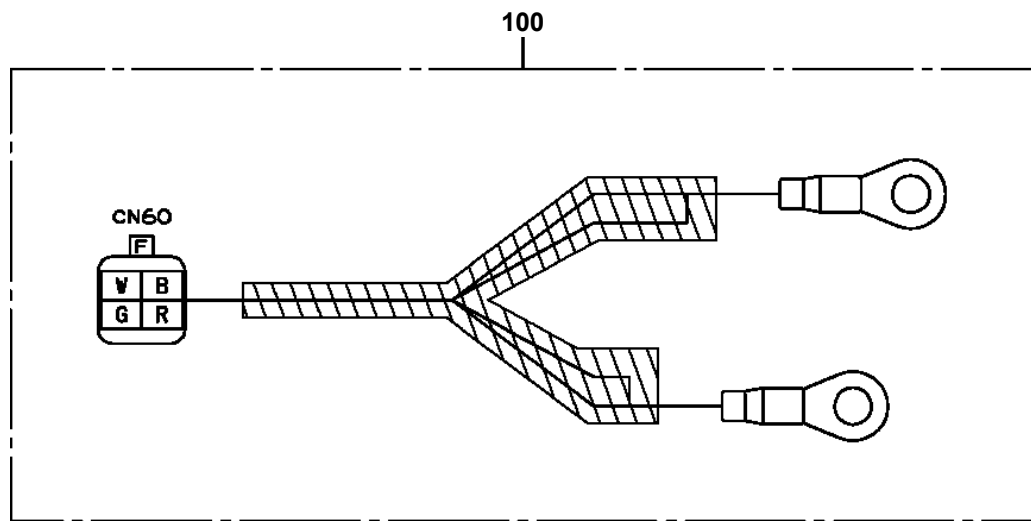
AT-146-1 4209510062 UPPER

| Pos No. | Parts No | Parts Name | Qty | Unit | Technical Data | Serial No (Start) | Serial No (End) | Remark |
|---------|-------------|----------------------|-----|------|----------------|-------------------|-----------------|--------|
| 1 | 36130235010 | PLATE (BASE) | 1 | | | | | |
| 2 | 36131825010 | CASE | 1 | | | | | |
| 3 | 36131825020 | DRUM ASSY | 1 | | | | | |
| 4 | 36131345010 | COVER | 1 | | | | | |
| 5 | 31370105030 | PACKING | 1 | | | | | |
| 6 | 31370005030 | PACKING | 1 | | | | | |
| 7 | 36130235090 | WASHER,SEAL | 1 | | | | | |
| 8 | 36131825030 | BRACKET | 1 | | | | | |
| 9 | 36131825040 | CABLE ASSY | 1 | | | | | |
| 10 | 36131195030 | POTENTIOMETER | 1 | | | | | |
| 11 | 36130235100 | CLAMP (CORD) | 1 | | | | | |
| 12 | 36130045090 | CLIP (NYLON) | 1 | | | | | |
| 13 | 32360005150 | CLIP (NYLON) | 1 | | | | | |
| 14 | 36130235070 | GEAR (A) | 1 | | | | | |
| 15 | 36131825050 | GEAR | 1 | | | | | |
| 18 | 36160435100 | COLLAR | 1 | | | | | |
| 19 | 31370005080 | GUIDE (CORD) | 1 | | | | | |
| 20 | 36131825060 | LOCK (CORD) | 1 | | | | | |
| 21 | 82100000191 | TERMINAL | 1 | | | | | |
| 31 | 82100000080 | CORD (1-LINE) | 8 | M | | | | |
| 100 | 36131820000 | DETECTOR,BOOM LENGTH | 1 | | | | | |

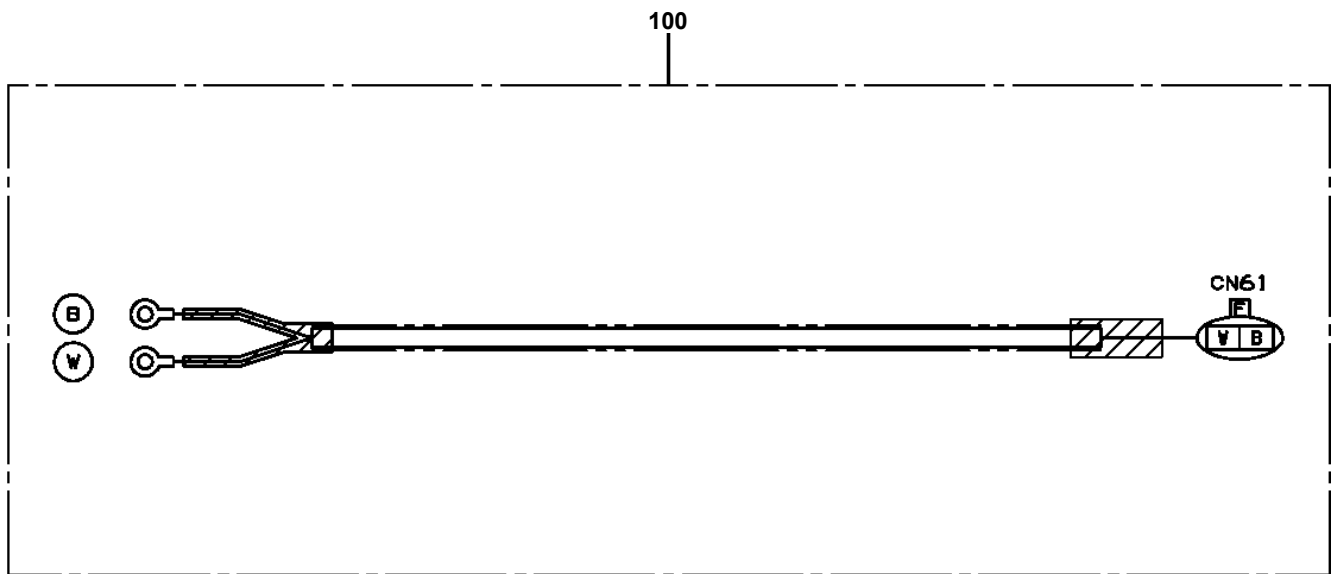
AT-146-1 4209510062 UPPER

| Pos No. | Parts No | Parts Name | Qty | Unit | Technical Data | Serial No (Start) | Serial No (End) | Remarks | Pages |
|---------|-------------|------------|-----|------|----------------|-------------------|-----------------|---------|-------|
| 1 | 42264602100 | COVER | 1 | | | | | | |
| 2 | 42264602200 | COVER | 1 | | | | | | |
| 3 | 42264602301 | COVER | 1 | | | | | | |
| 4 | 90183108030 | BOLT | 2 | | M8X30 | | | | |
| 5 | 90183108020 | BOLT | 2 | | M8X20 | | | | |
| 6 | 37000575990 | PLATE | 2 | | | | | | |
| 7 | 37000576000 | PLATE | 2 | | | | | | |
| 8 | 37000565980 | PLATE | 2 | | | | 227661 | | |
| 9 | 90183106020 | BOLT | 2 | | M6X20 | | | | |
| 10 | 37000520150 | PLATE | 2 | | | | | | |
| 11 | 37000568770 | PLATE | 2 | | T=1.5 | 227597 | | | |

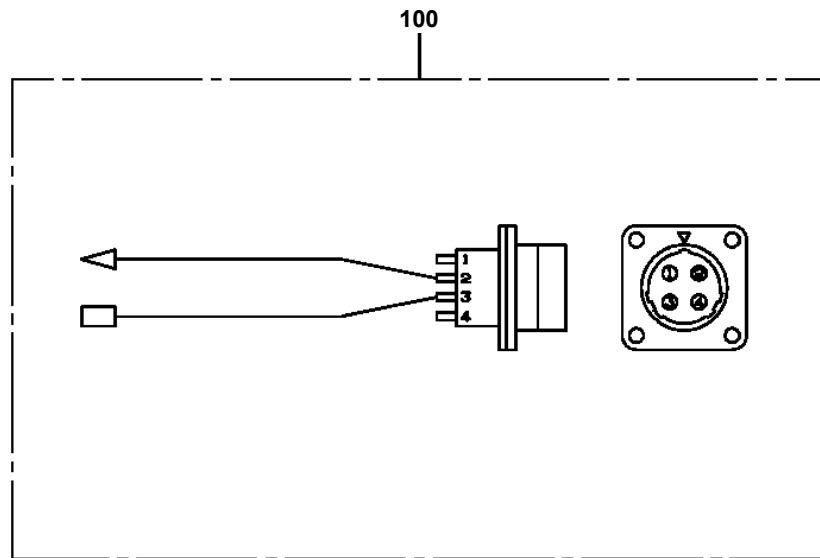
AT-146-1 42095100062 UPPER
PH5031064-00 HARNESS



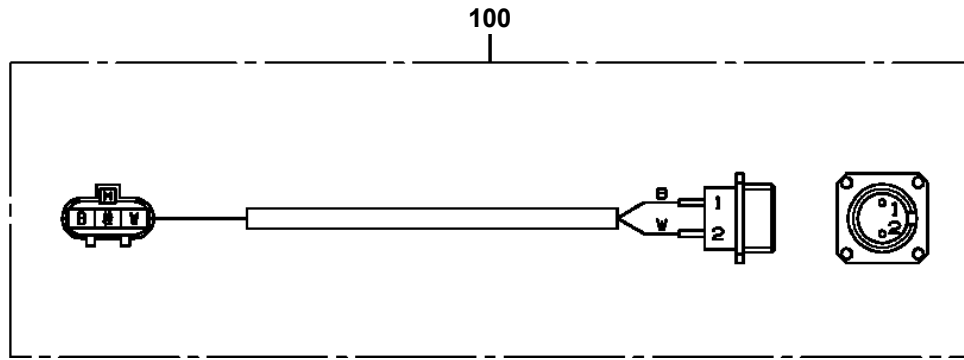
AT-146-1 42095100062 UPPER
PH5032282-00 HARNESS



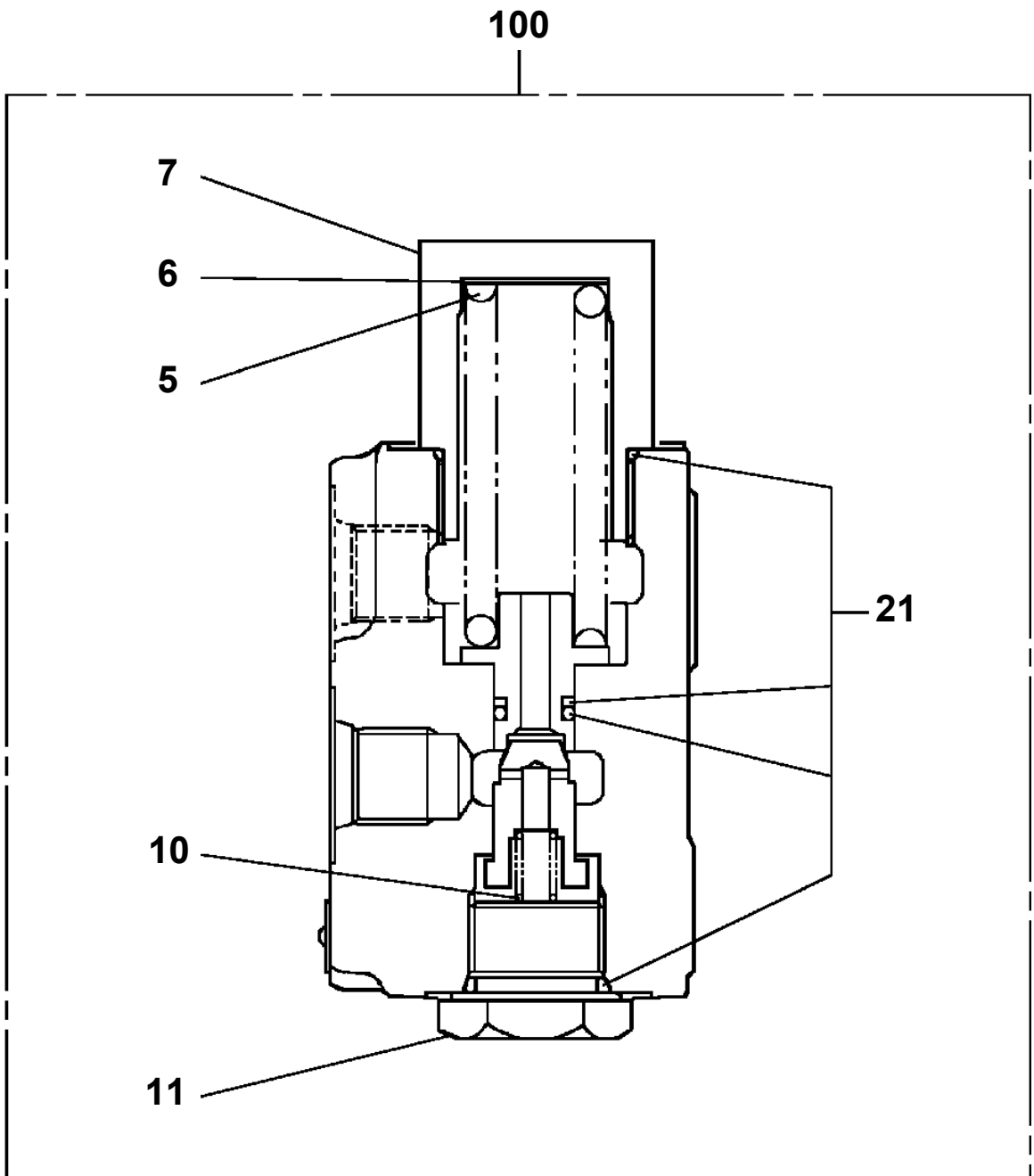
**AT-146-1 42095100062 UPPER
PH5032349-00 HARNESS**



**AT-146-1 42095100062 UPPER
PH5034444-00 HARNESS**

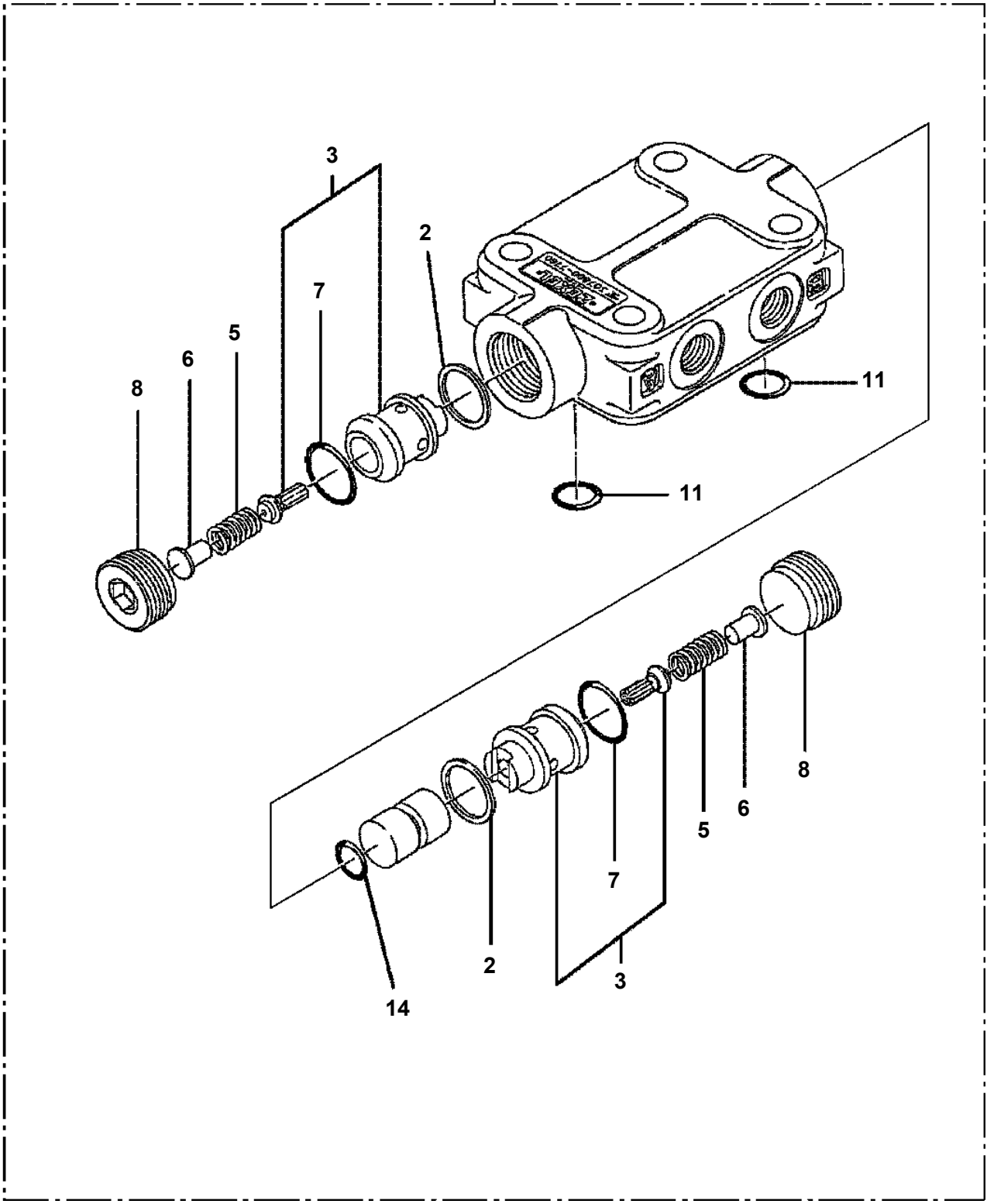


AT-146-1 42095100062 UPPER
PI1100122-00 VALVE,RELIEF

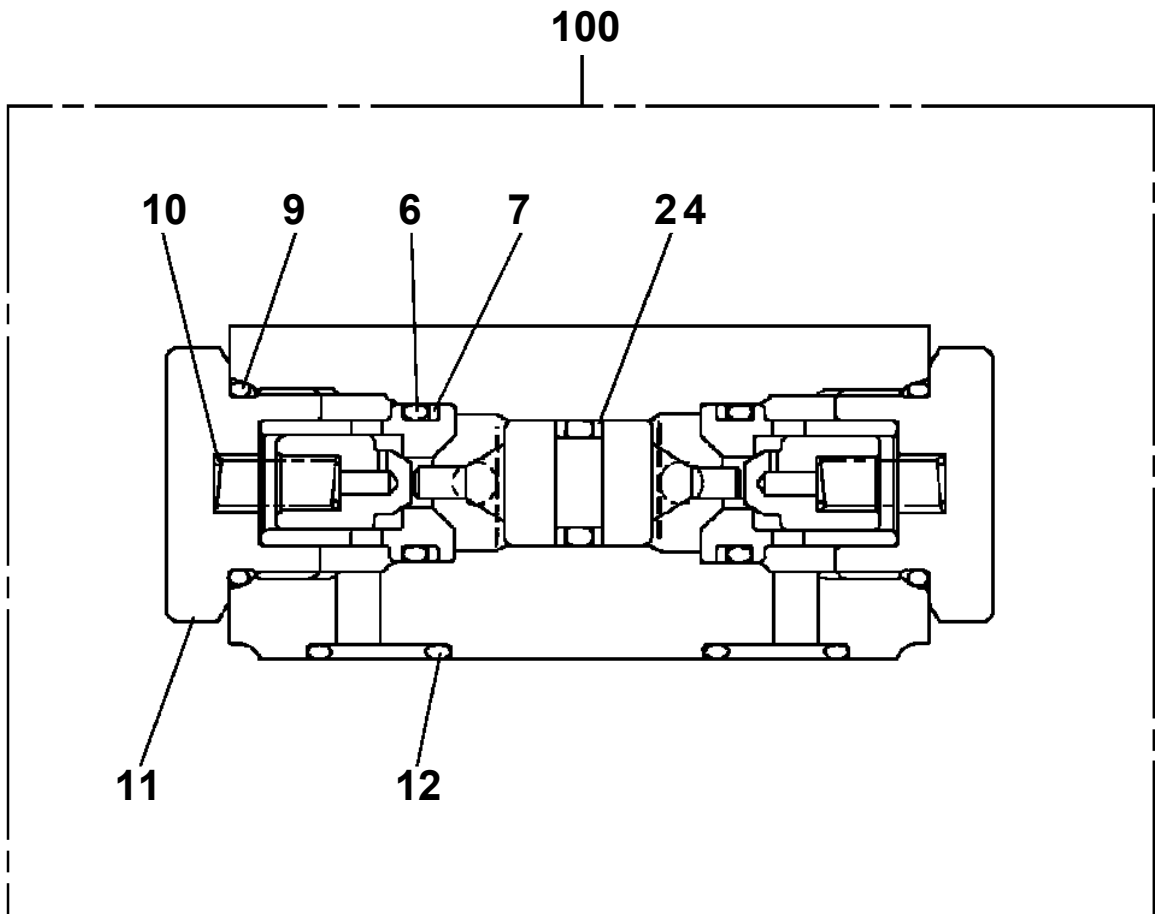


AT-146-1 42095100062 UPPER
PI1140133-01 VALVE,CHECK

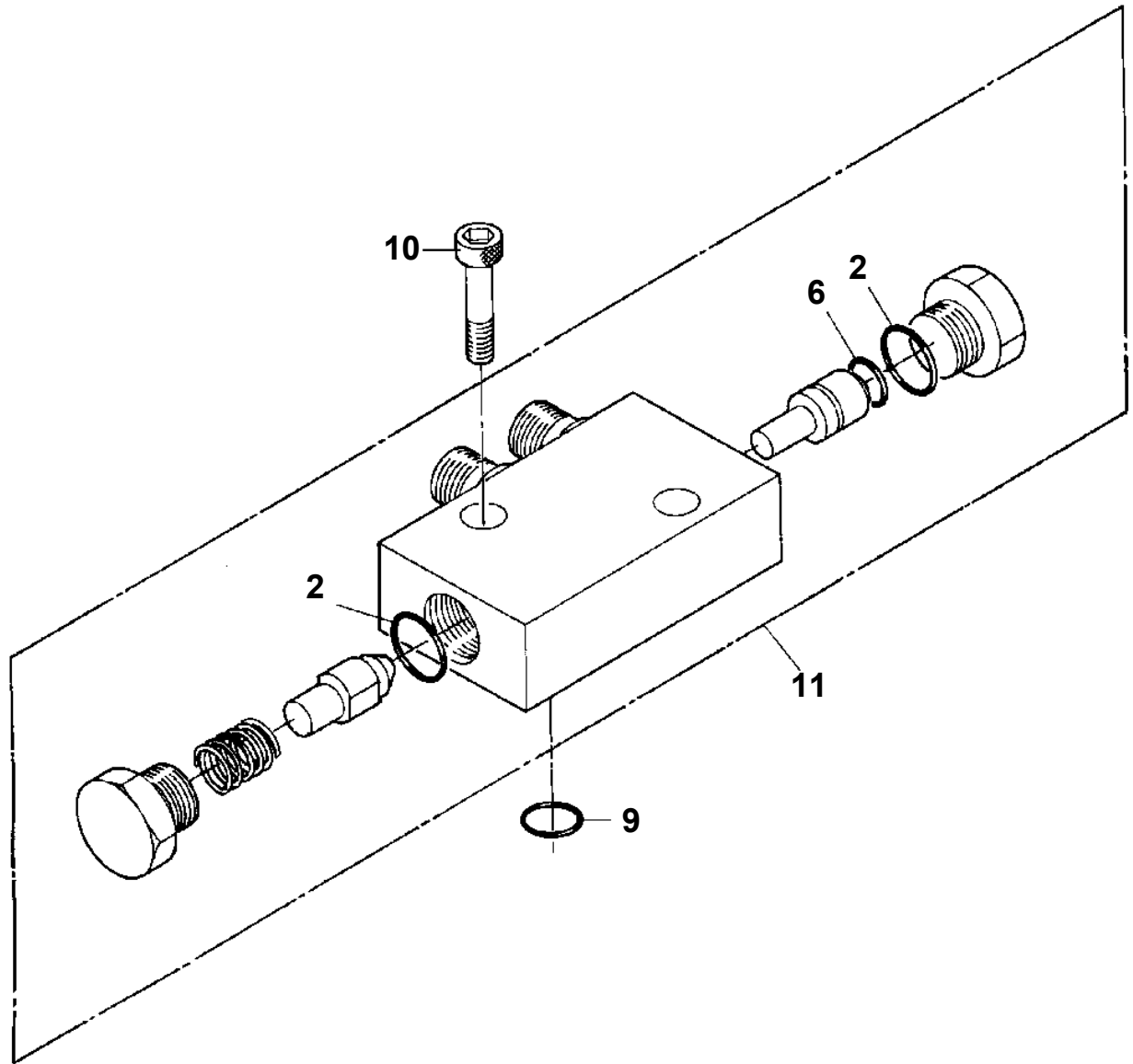
100 → (A)



AT-146-1 42095100062 UPPER
PI1140214-00 VALVE,CHECK



AT-146-1 42095100062 UPPER
PI1280041-01 VALVE,PILOT CHECK



AT-146-1 4209510062 UPPER

| Pos No. | Parts No | Parts Name | Qty | Unit | Technical Data | Serial No (Start) | Serial No (End) | Remarks |
|---------|-------------|---------------------|-----|------|----------------|-------------------|-----------------|---------|
| 1 | 42264512000 | FRAME | 1 | | | | | |
| 2 | 42261170010 | PLATE | 2 | | | | | |
| 3 | 90171112065 | BOLT | 8 | | M12X65 | | | |
| 4 | 90303501201 | WASHER,PLAIN | 21 | | 12 | | 227847 | |
| | 90303501201 | WASHER,PLAIN | 13 | | 12 | 227848 | | |
| 5 | 42264513000 | FRAME ASSY | 1 | | | | 227373 | |
| | 42264515000 | FRAME ASSY | 1 | | | 227374 | | |
| 6 | 80136363050 | PIN,SPLIT | 1 | | 6.3X50 | | | |
| 7 | 42261620020 | PIN | 1 | | | | 227653 | |
| | 42265980010 | PIN | 1 | | | 227654 | | |
| 8 | 82456106000 | NIPPLE,GREASE | 1 | | 1/4-28UNF | | 227653 | |
| | 82455106000 | NIPPLE,GREASE | 1 | | A-M6F FE | 227654 | | |
| 9 | 82400000459 | CAP | 1 | | | | | |
| 10 | 90172112025 | BOLT,HEXAGON SOCKET | 2 | | M12X25 | | | |
| 11 | 42261370010 | PIN ASSY | 1 | | | | | |
| 12 | 42264511000 | POST ASSY | 1 | | | | 227373 | |
| | 42265594000 | POST ASSY | 1 | | | 227374 | | |
| 13 | 80601111100 | RING,RITAINING | 1 | | S110 | | 227373 | |
| 14 | 42261420080 | BEARING,PLAIN | 1 | | | | | |
| 15 | 80175303008 | SCREW,MACHINE | 4 | | M3X8 | | | |
| 16 | 42262715000 | GUIDE | 1 | | | | | |
| 17 | 90101208014 | BOLT | 6 | | M8X14 | | | |
| 18 | 90302040801 | WASHER,SPRING | 6 | | 8 | | | |
| 19 | 36663470000 | MOTOR,HYDRAULIC | 1 | | | | | |
| 20 | 90172112030 | BOLT,HEXAGON SOCKET | 2 | | M12X30 | | | |
| 21 | 90309341203 | WASHER,SPRING | 2 | | 12 | | | |
| 22 | 36340360000 | REDUCER,SWING SPEED | 1 | | | | | |
| 23 | 42264510100 | PLATE | 1 | | | | | |
| 24 | 90171112030 | BOLT | 7 | | M12X30 | | | |
| 25 | 42264510201 | PIN | 1 | | | | | |
| 26 | 90180210020 | BOLT,BUTTON | 2 | | M10X20 | | | |
| 27 | 90302041001 | WASHER,SPRING | 8 | | 10 | | | |
| 28 | 37000179440 | PIN | 2 | | | | | |
| 29 | 42264510700 | GUIDE | 1 | | | | | |
| 30 | 37000510170 | PLATE | 1 | | | | | |
| 31 | 37000575630 | PLATE | 1 | | | | | |
| 32 | 42264510300 | CHAIN | 1 | | 15.875X41 | | | |
| 33 | 42264514000 | CYLINDER,LIFT | 1 | | | | | |
| 34 | 42264510400 | CHAIN | 1 | | 25.4X27 | | | |
| 35 | 90201481600 | NUT | 4 | | M16 | | | |
| 36 | 90302041601 | WASHER,SPRING | 1 | | 16 | | | |
| 37 | 42264510500 | ROD | 2 | | | | | |
| 38 | 90201481200 | NUT | 5 | | M12 | | | |
| 39 | 90302041201 | WASHER,SPRING | 1 | | 12 | | | |
| 40 | 42260440090 | ROD | 2 | | | | | |
| 41 | 90171112035 | BOLT | 1 | | M12X35 | | | |
| 42 | 37000508520 | PLATE | N | | T=0.8 | | | |
| 43 | 42261561600 | PLATE,SLIDE | 12 | | | | | |
| 44 | 80184306012 | SCREW,MACHINE | 12 | | M6X12 | | | |
| 45 | 91850210545 | FASTENER | 1 | | L=545 | | | |
| 46 | 90171110014 | BOLT | 6 | | M10X14 | | | |
| 47 | 42264510010 | PLATE | 2 | | | | | |
| 48 | 37000520110 | PLATE | 1 | | | | | |
| 49 | 37002012150 | PLATE,SLIDE | 2 | | | | | |
| 50 | 37000577290 | PLATE | N | | T=0.8 | | | |
| 51 | 90171112020 | BOLT | 4 | | M12X20 | | | |
| 52 | 42265750100 | COVER | 1 | | | 227374 | | |
| 53 | 80172304010 | SCREW,MACHINE | 4 | | M4X10 | 227374 | | |
| 54 | 90302040401 | WASHER,SPRING | 4 | | 4 | 227374 | | |
| 55 | 37000586760 | WASHER,PLAIN | 8 | | 12 | 227848 | | |
| 56 | 37000570860 | PLATE | N | | T=0.5 | 227967 | | |
| 57 | 42200690090 | SHIM | N | | T=0.3 | 227967 | | |
| 63 | 91001211000 | O-RING | 1 | | 1A G110 | 227374 | | |

CLICK HERE TO **DOWNLOAD** THE COMPLETE MANUAL

- Thank you very much for reading the preview of the manual.
- You can download the complete manual from: www.heydownloads.com by clicking the link below



- Please note: If there is no response to CLICKING the link, please download this PDF first and then click on it.

CLICK HERE TO **DOWNLOAD** THE COMPLETE MANUAL

AT-146-1 4209510062 UPPER

| Pos No. | Parts No | Parts Name | Qty | Unit | Technical Data | Serial No (Start) | Serial No (End) | Re |
|---------|-------------|---------------------|-----|------|----------------|-------------------|-----------------|----|
| 88 | 91002801100 | O-RING | 9 | | 1B P11 | | | |
| 89 | 91002801400 | O-RING | 4 | | 1B P14 | | | |
| | 91002801400 | O-RING | 16 | | 1B P14 | | 227225 | |
| | 91002801400 | O-RING | 11 | | 1B P14 | 227226 | | |
| 90 | 80481302020 | JOINT | 1 | | G1/4-G1/4 | | | |
| 101 | 37000908720 | JOINT (WITH O-RING) | 2 | | PF1/2-PF3/8 | | | |
| 102 | 37000928370 | JOINT | 1 | | S,G1/2-G1/2 | | | |
| 103 | 91002801800 | O-RING | 4 | | 1B P18 | | | |
| 104 | 37000908730 | JOINT (WITH O-RING) | 8 | | L,G3/8-G1/4 | | 227225 | |
| | 37000908730 | JOINT (WITH O-RING) | 4 | | L,G3/8-G1/4 | 227226 | | |
| 105 | 37000925680 | JOINT | 5 | | S,G3/8-G3/8 | | 227225 | |
| 108 | 80302090161 | FITTING | 1 | | KCO12-030N | | | |
| 109 | 80302090141 | FITTING | 1 | | KCO12-020N | | | |
| 111 | 42345023100 | JOINT | 1 | | | | | |
| 112 | 80491303020 | JOINT (WITH O-RING) | 4 | | L,G3/8-G1/4 | 227226 | | |
| 113 | 80491303030 | JOINT (WITH O-RING) | 1 | | L,PF3/8-PF3/8 | 227226 | | |
| 121 | 91071011500 | O-RING | 1 | | Y22550-115-A | | | |
| 122 | 91470000600 | RING,BACKUP | 1 | | Y22021-06 | | | |

AT-146-1 42095100062 UPPER

| Pos No. | Parts No | Parts Name | Qty | Unit | Technical Data | Serial No (Start) | Serial No (End) | Remarks | Pages |
|---------|-------------|---------------|-----|------|----------------|-------------------|-----------------|---------|-------|
| 1 | 16715401000 | NIPPLE | 1 | | | | | | |
| 2 | 16715403000 | SLEEVE | 2 | | | | | | |
| 3 | 16715404000 | NIPPLE | 2 | | | | | | |
| 4 | 16715402000 | FITTING,ELBOW | 1 | | | | | | |
| 5 | 82456101000 | NIPPLE,GREASE | 1 | | A-PT1/8 | | | | |
| 6 | 42345289510 | PIPE ASSY | 1 | | | | | | |
| 7 | 82459103000 | NIPPLE,GREASE | 1 | | C-PT1/8 | | | | |

AT-146-1 42095100062 UPPER

| Pos No. | Parts No | Parts Name | Qty | Unit | Technical Data | Serial No (Start) | Serial No (End) | Remarks | Pages |
|---------|-------------|---------------|-----|------|----------------|-------------------|-----------------|---------|--------|
| 1 | 42271801000 | COVER ASSY | 1 | | | | | | 000047 |
| 2 | 42271802000 | COVER | 1 | | | | | | |
| 3 | 90101208016 | BOLT | 10 | | M8X16 | | | | |
| 4 | 90302040801 | WASHER,SPRING | 10 | | 8 | | | | |
| 5 | 90303070801 | WASHER,PLAIN | 10 | | 8 | | | | |
| 6 | 90101206014 | BOLT | 6 | | M6X14 | | | | |
| 7 | 90302040601 | WASHER,SPRING | 6 | | 6 | | | | |
| 8 | 37000512320 | PLATE | 6 | | | | | | |
| 9 | 42270480020 | COVER | 1 | | | | | | |
| 10 | 42270480030 | COVER | 1 | | | | | | |
| 63 | 82400000311 | GROMMET | 1 | | L=1000 | | | | |

AT-146-1 42095100062 UPPER

| Pos No. | Parts No | Parts Name | Qty | Unit | Technical Data | Serial No (Start) | Serial No (End) |
|---------|----------|-----------------------------------|-----|------|----------------|-------------------|-----------------|
| 1 | (*****) | OPE.ASSY (BUCKET/PANEL,LEVER) | 1 | | | | |
| 3 | (*****) | SUPPORT (BUCKET FRAME) | 1 | | | | |
| 4 | (*****) | MODIFICATION ASSY (BUCKET WIRING) | 1 | | | | |
| 6 | (*****) | NAME PLATE ASSY | 1 | | | | |

AT-146-1 4209510062 UPPER

| Pos No. | Parts No | Parts Name | Qty | Unit | Technical Data | Serial No (Start) | Serial No (End) | Remark |
|---------|-------------|----------------------|-----|------|----------------|-------------------|-----------------|--------|
| 1 | 90101206014 | BOLT | 2 | | M6X14 | | | |
| 2 | 90302040601 | WASHER,SPRING | 16 | | 6 | | | |
| 3 | 36140520000 | DETECTOR,ANGLE | 1 | | | | | |
| 4 | 90304110601 | WASHER,TOOTH | 4 | | 6 | | | |
| 5 | 36131820000 | DETECTOR,BOOM LENGTH | 1 | | | | | |
| 7 | 82100002012 | CLAMP | 1 | | WR18 | | | |
| 8 | 90201200600 | NUT | 8 | | M6 | | | |
| 9 | 91810132530 | FASTENER | 10 | | | | | |
| 10 | 91850400601 | CLAMP | 1 | | | | | |
| 11 | 90101206010 | BOLT | 6 | | M6X1.0 | | | |
| 12 | 42350071000 | ROLLER ASSY | 2 | | | | | |
| 13 | 42353320100 | COVER | 1 | | | | | |
| 14 | 82100001735 | SLEEVE | 1 | | | | | |
| 15 | 82100001737 | SLEEVE | 2 | | | | | |
| 16 | 80175304010 | SCREW,MACHINE | 1 | | M4X10 | | | |
| 17 | 42360030060 | WASHER | 1 | | | | | |
| 18 | 82100002010 | CLAMP | 1 | | WR15 | | | |
| 19 | 82100002004 | CLAMP | 6 | | WR8 | | | |
| 20 | 90101206012 | BOLT | 4 | | M6X12 | | | |
| 31 | 42360030040 | SUPPORT | 2 | | | | | |
| 32 | 37001102350 | ROLLER | 2 | | | | | |
| 33 | 37000302060 | SPACER | 2 | | L=11.2 | | | |
| 35 | 90201201000 | NUT | 2 | | M10 | | | |
| 36 | 90302041001 | WASHER,SPRING | 2 | | 10 | | | |
| 37 | 90303071001 | WASHER,PLAIN | 2 | | 10 | | | |
| 52 | 82400000200 | GROMMET | 1 | | KG-012,L=250 | | | |

AT-146-1 42095100062 UPPER

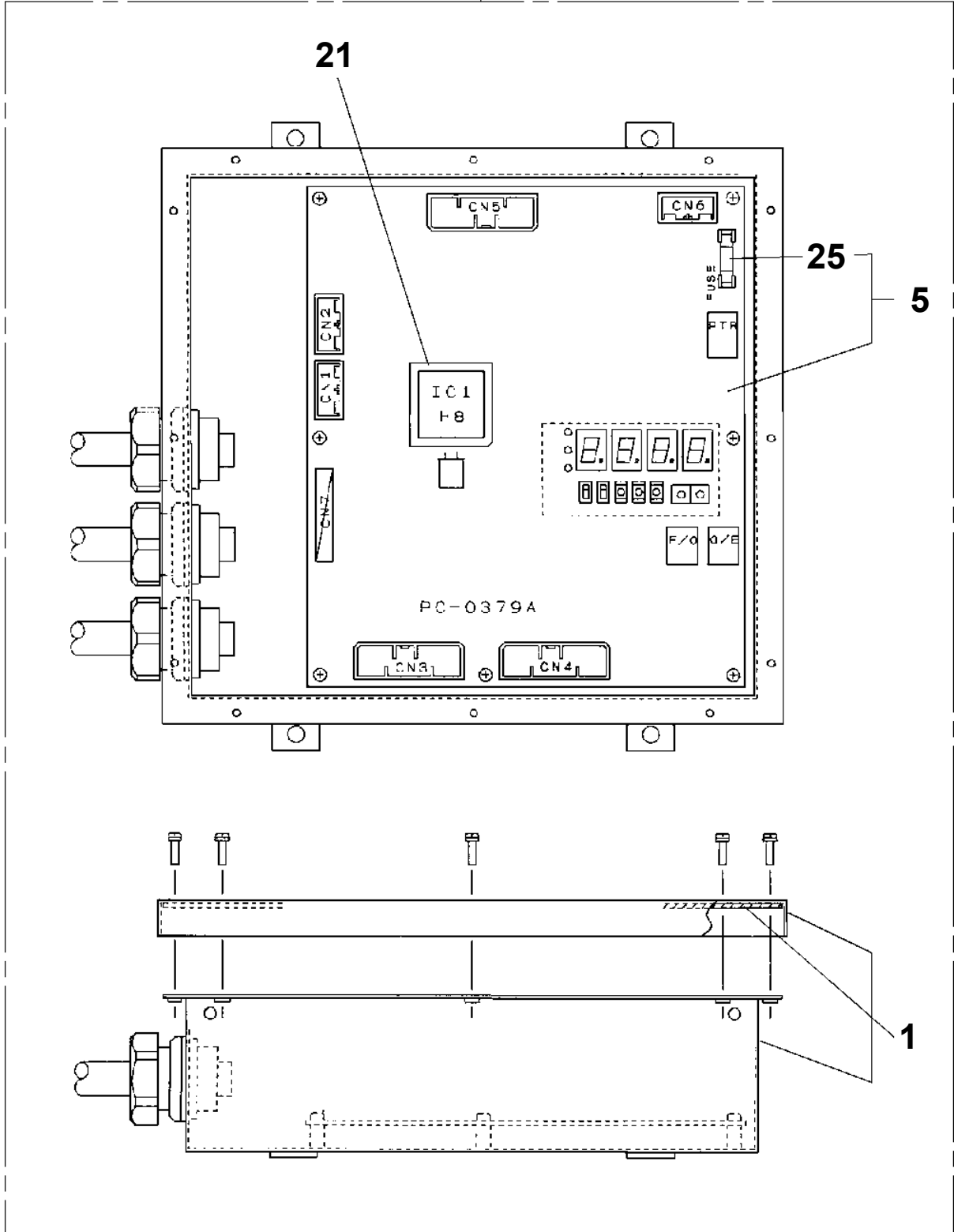
| Pos No. | Parts No | Parts Name | Qty | Unit | Technical Data | Serial No (Start) | Serial No (End) | Remarks | Pa |
|---------|-------------|-------------------|-----|------|----------------|-------------------|-----------------|---------|----|
| 1 | 42509041000 | CABLE ASSY,SIGNAL | 1 | | | | | | |
| 2 | 37000714010 | CLAMP ASSY | 5 | | 12X1 | | | | |
| 3 | 37000300710 | SLEEVE | 4 | | 12-8 | | | | |
| 4 | 91810130240 | FASTENER | 20 | | | | | | |
| 5 | 82100001410 | TUBE, SPIRAL | 1 | M | SE-04BK | | | | |
| 6 | 80192473010 | SCREW,MACHINE | 3 | | M3X10 | | | | |

AT-146-1 42095100062 UPPER

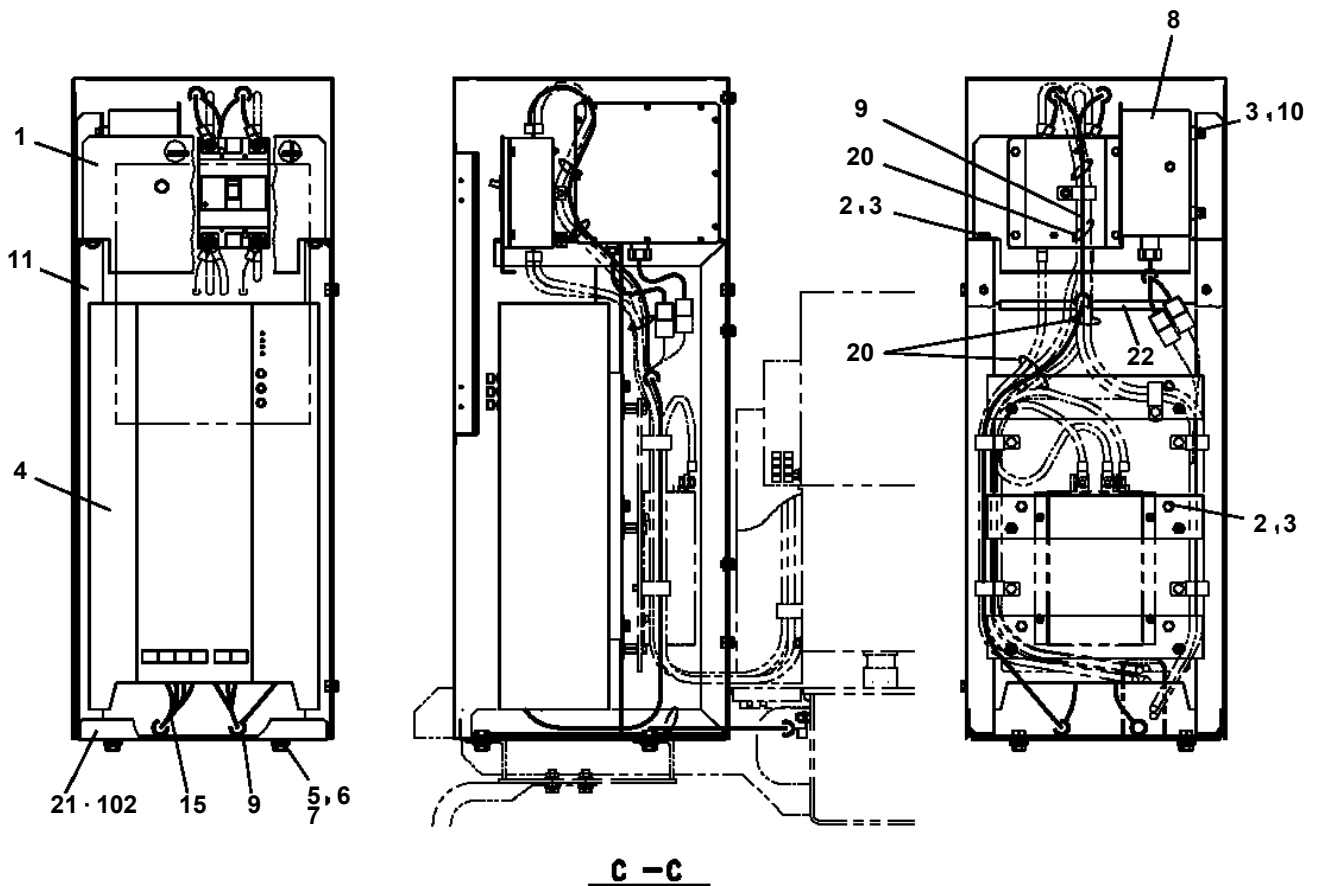
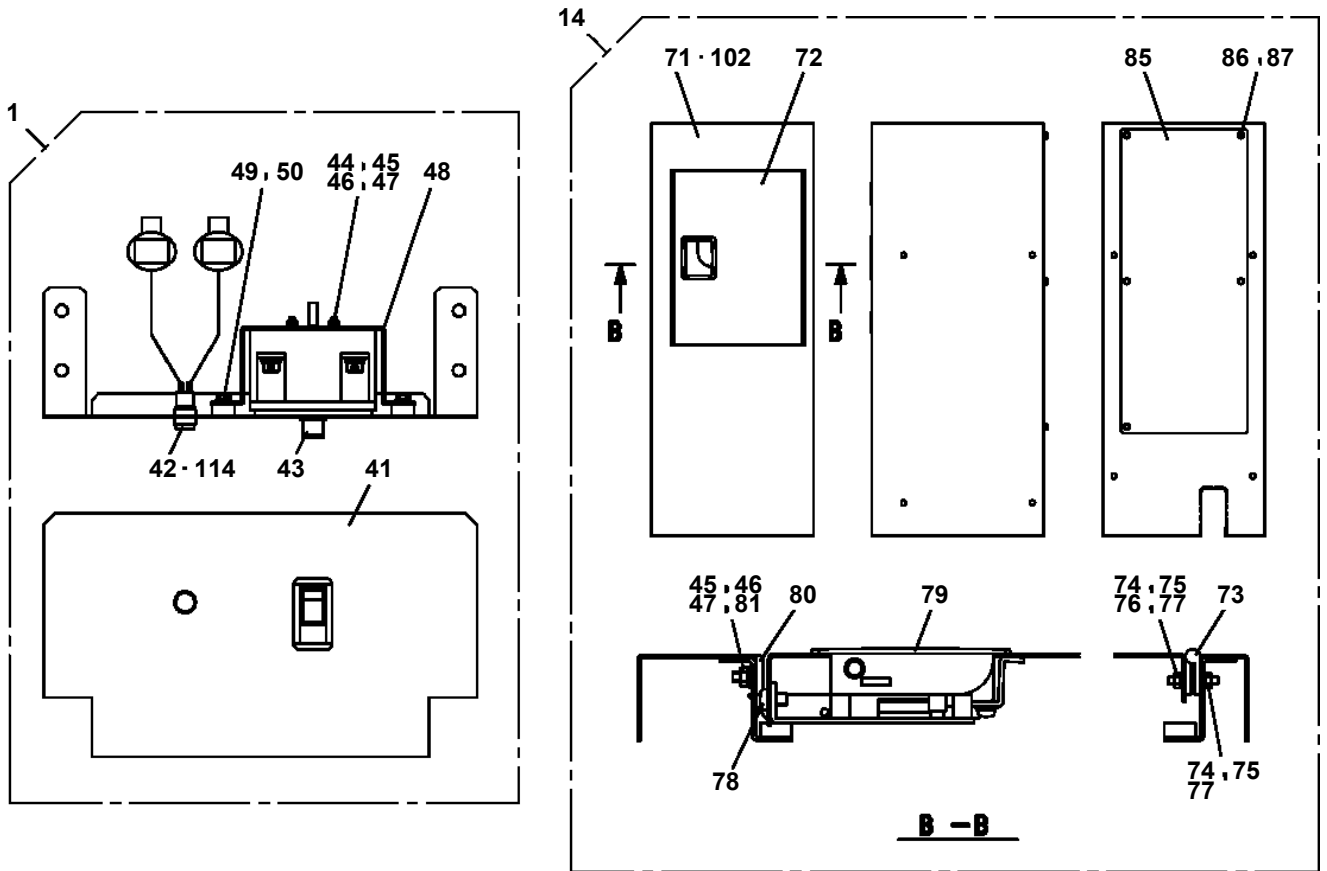
| Pos No. | Parts No | Parts Name | Qty | Unit | Technical Data | Serial No (Start) | Serial No (End) | Remarks | Pages |
|---------|-------------|---------------|-----|------|----------------|-------------------|-----------------|---------|-------|
| 1 | 42478871000 | LAMP ASSY | 1 | | | | | | |
| 21 | 42478871100 | SUPPORT | 1 | | | | | | |
| 22 | 42433401300 | LAMP | 1 | | | | | | |
| 31 | 82199444322 | LAMP (YELLOW) | 1 | | | | | | |
| 41 | 82100002550 | BULB,LAMP | 1 | | 24V 20W | | | | |

AT-146-1 42095100062 UPPER
PN1210126-00 TRANSMITTER, SIGNAL

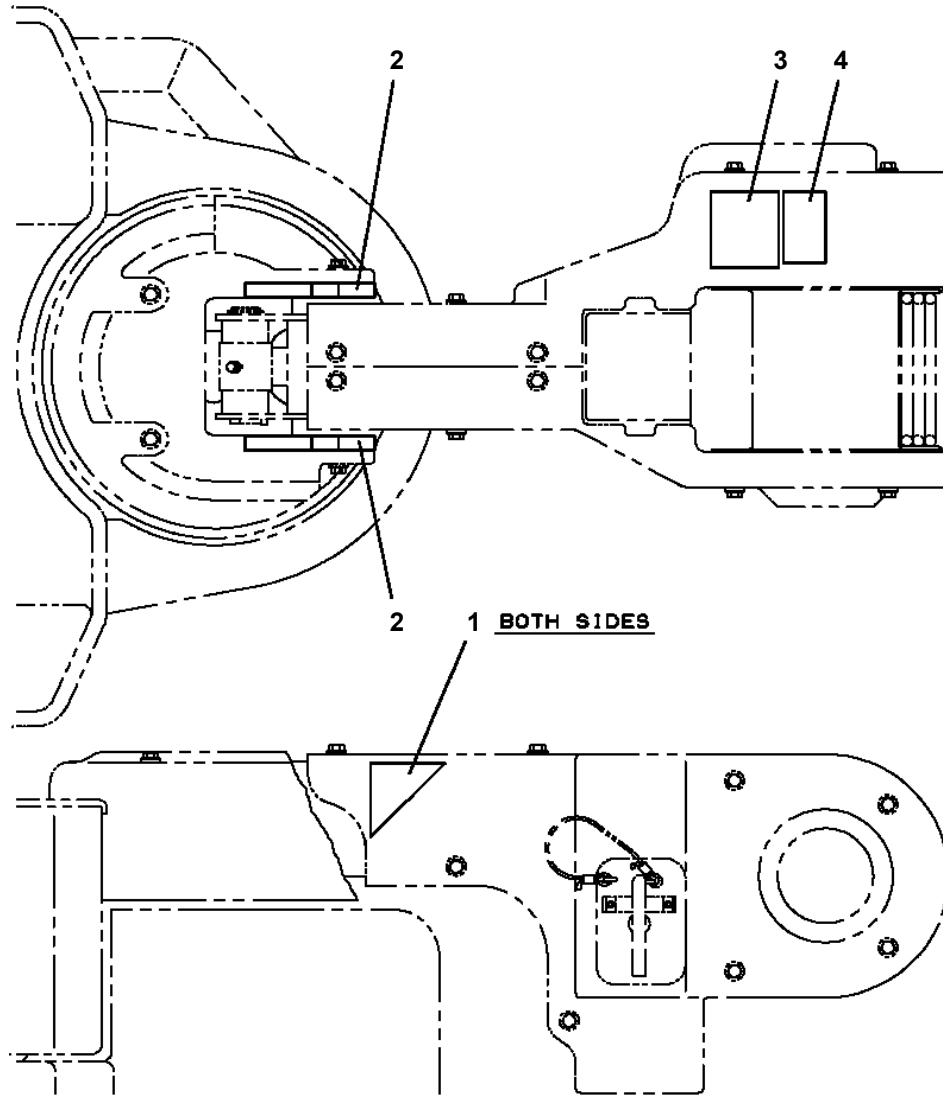
100



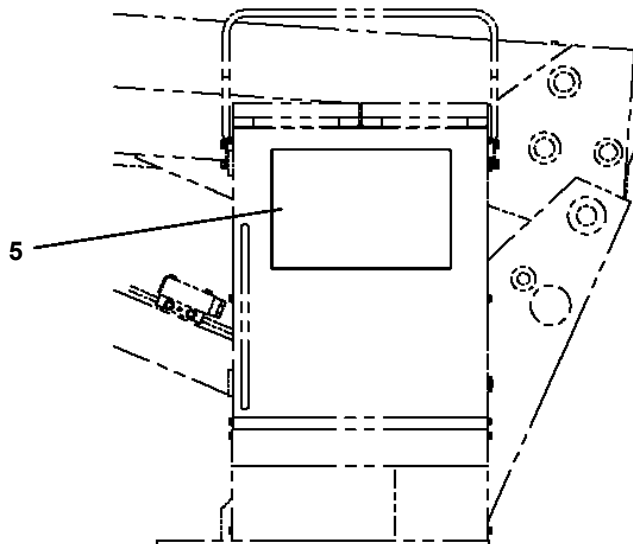
**AT-146-1 42095100062 UPPER
PN1360005-02 MOUNT,CHARGER**



**AT-146-1 42095100062 UPPER
PO1013351-00 PLATE ASSY,NAME (WINCH)**



WINCH



SWING FRAME

AT-146-1 4209510062 UPPER

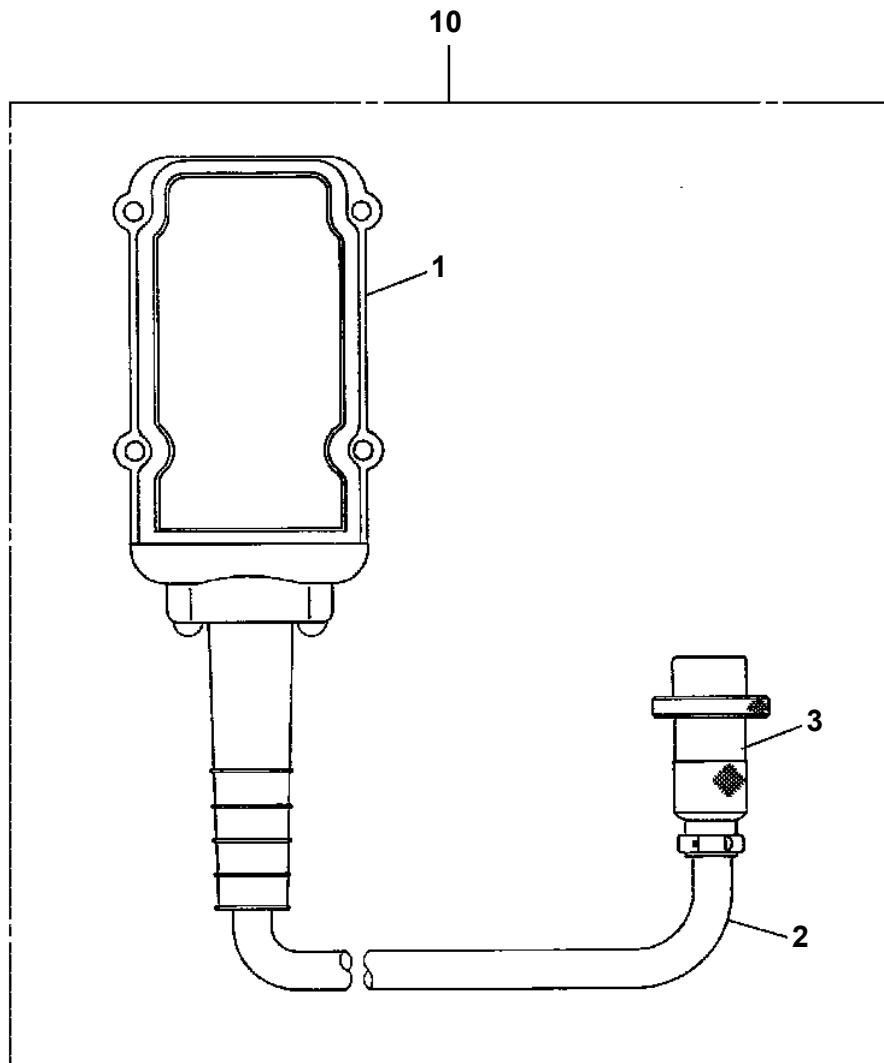
| Pos No. | Parts No | Parts Name | Qty | Unit | Technical Data | Serial No (Start) | Serial No (End) | Remarks | Pages |
|---------|-------------|---------------|-----|------|----------------|-------------------|-----------------|---------|-------|
| 1 | 37002201980 | PLATE,NAME | 1 | | | | | | |
| 2 | 42394925040 | PLATE,NAME | 1 | | | | | | |
| 3 | 42392655010 | PLATE,NAME | 1 | | | | | | |
| 4 | 42394925010 | PLATE,NAME | 1 | | | | | | |
| 5 | 42391684110 | PLATE,CAUTION | 1 | | | | | | |
| 6 | 42393204010 | PLATE,NAME | 1 | | | | | | |
| 7 | 42394925020 | PLATE,NAME | 1 | | | | | | |
| 8 | 42394925030 | PLATE,NAME | 1 | | | | | | |
| 9 | 42392655030 | PLATE,CAUTION | 2 | | | | 227661 | | |
| | 42392655030 | PLATE,CAUTION | 4 | | | 227662 | | | |
| 10 | 42461371030 | PLATE,NAME | 1 | | | 227662 | | | |

AT-146-1 42095100062 UPPER

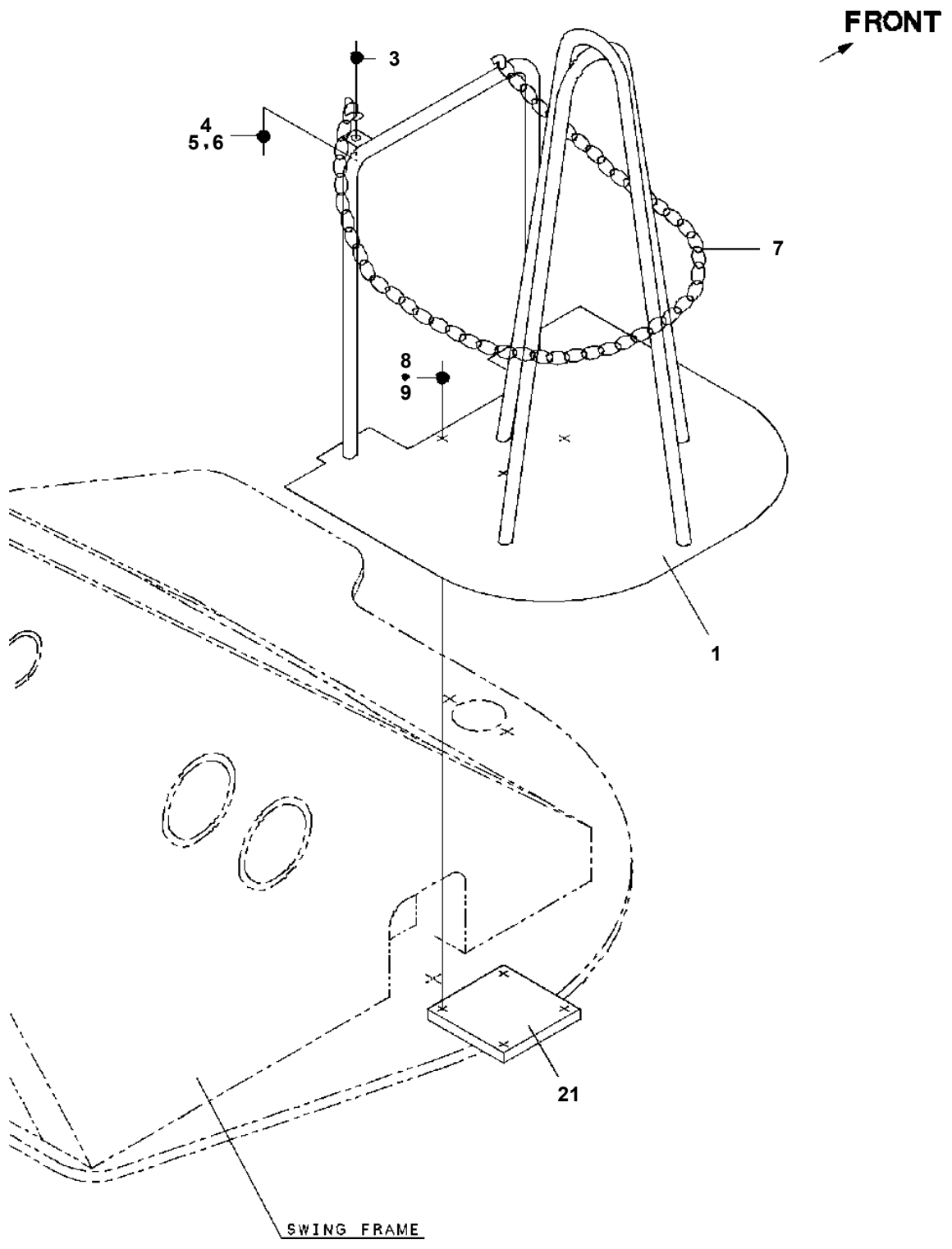
| Pos No. | Parts No | Parts Name | Qty | Unit | Technical Data | Serial No (Start) | Serial No (End) | Remarks | Pa |
|---------|-------------|--------------------|-----|------|----------------|-------------------|-----------------|---------|----|
| 2 | 42470721010 | JOINT | 2 | | | | 229107 | | |
| | 37000933940 | JOINT | 2 | | | 229108 | | | |
| 3 | 42470721301 | PRUNER | 1 | | | | | | |
| 4 | 80456020410 | JOINT,SELF SEALING | 1 | | | | | | |
| 5 | 80456010410 | JOINT,SELF SEALING | 1 | | | | | | |
| 6 | 42470721200 | HOSE ASSY | 1 | | | | | | |
| 7 | 42470721100 | COVER | 1 | | | | | | |
| 8 | 91000590800 | O-RING | 2 | | AS568-908 | 229108 | | | |
| 21 | 42470727530 | CAP (DUST) | 1 | | | | | | |
| 24 | 42470727540 | CAP (DUST) | 1 | | | | | | |
| 26 | 42470727520 | CAP (DUST) | 1 | | | | | | |
| 27 | 42470727510 | CAP (DUST) | 1 | | | | | | |
| 51 | 42340017540 | CAP | 1 | | | | | | |
| 61 | 42340017530 | CAP | 1 | | | | | | |

AT-146-1 42095100062 UPPER

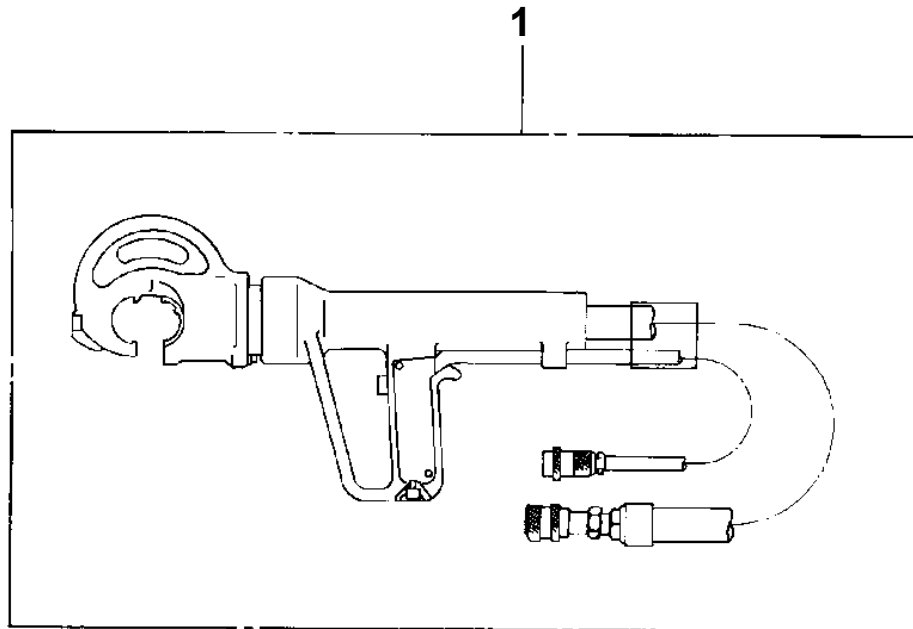
PV1030109-00 SWITCH BOX (ELECTRIC BOOSTER, 3M,NANABOSI,SINKOU DENKI)



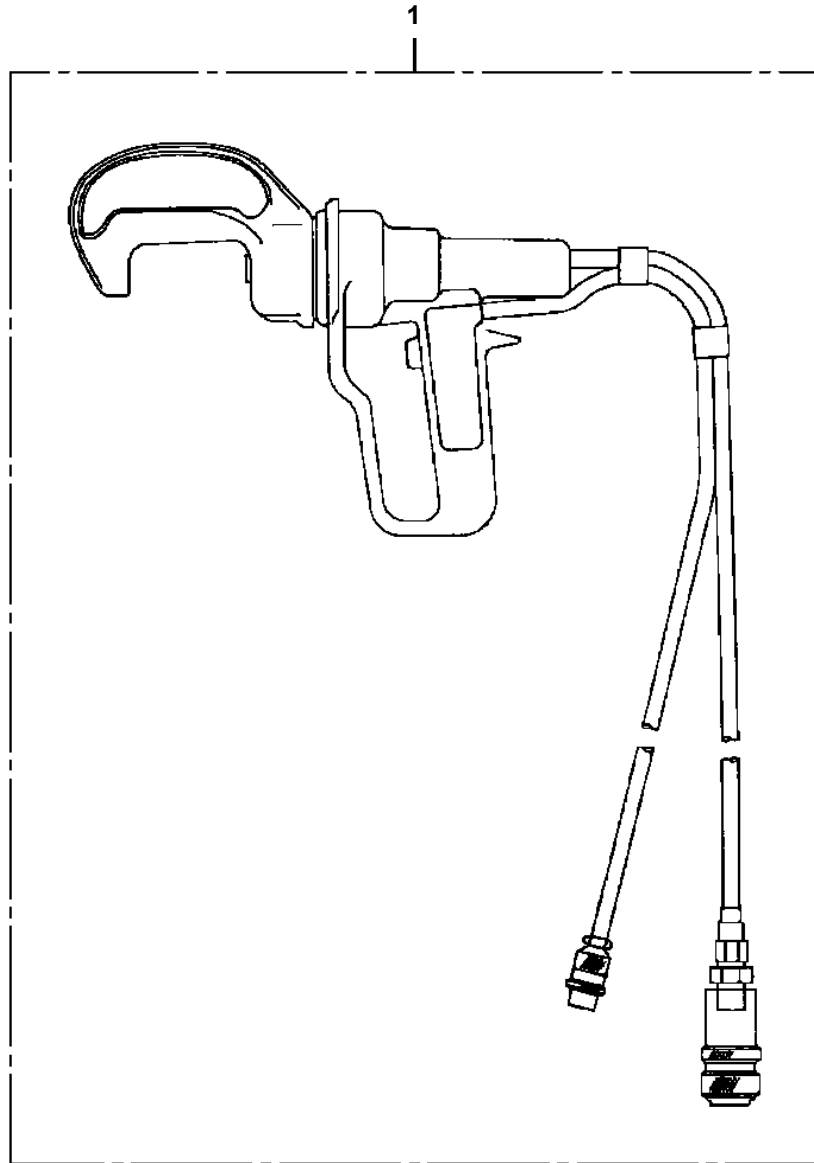
AT-146-1 42095100062 UPPER
PX1620018-00 MOUNT,COLOR CONE SUPPORT



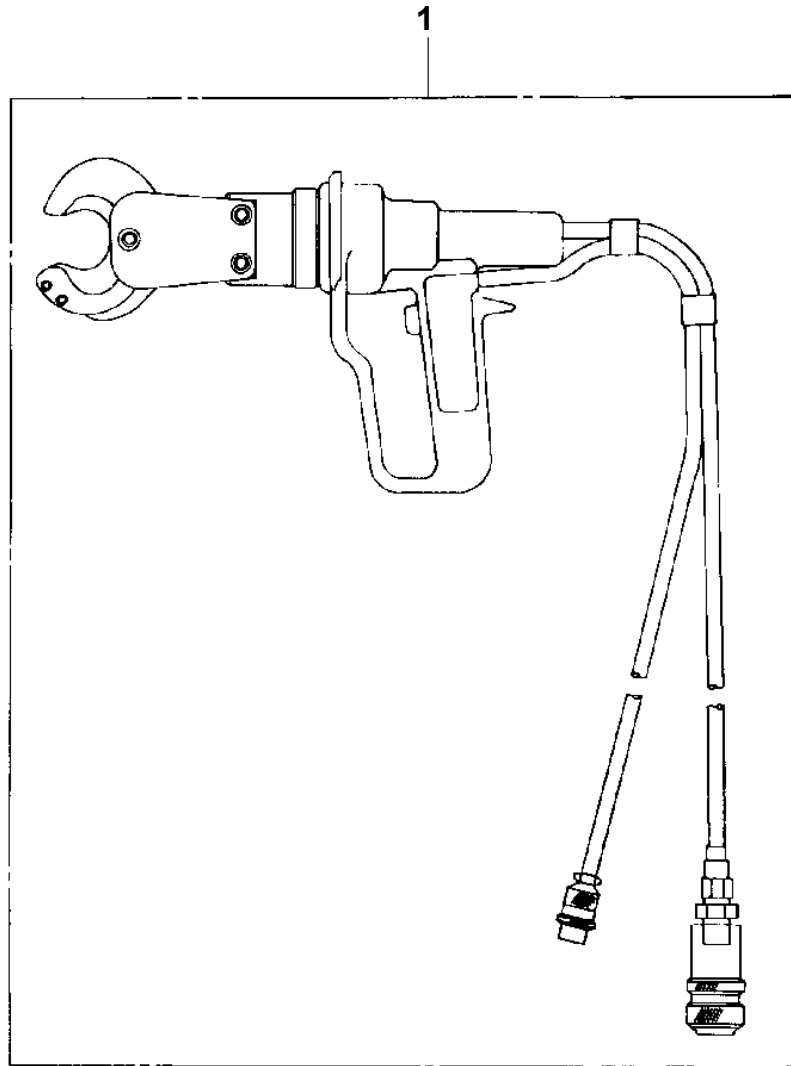
**AT-146-1 42095100062 UPPER
PY1050002-00 CLAMP HEAD (IZUMI 12TON 3.5M)**



**AT-146-1 42095100062 UPPER
PY1050008-01 CLAMP HEAD (IZUMI 8TON 3.5M ELECTRIC)**

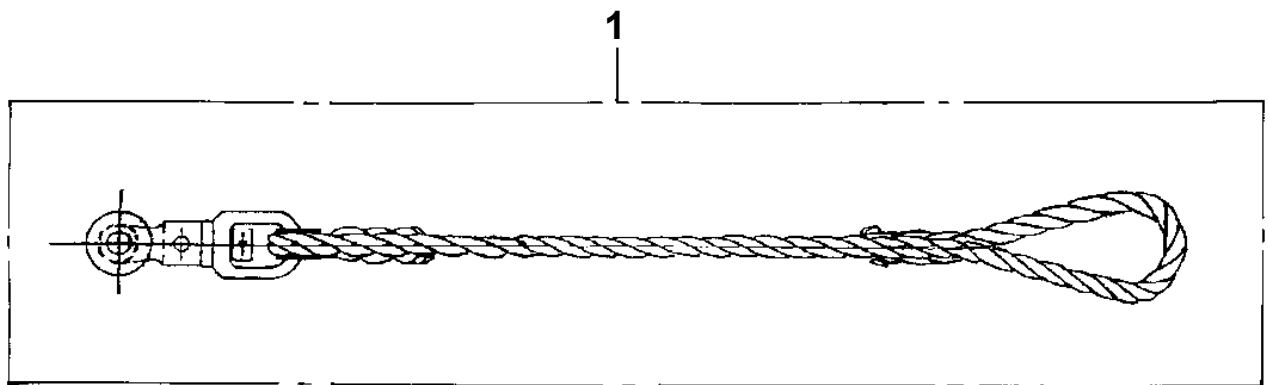


**AT-146-1 42095100062 UPPER
PY1060001-00 CUTTER HEAD (IZUMI 6.4TON 2.5M ELECTRIC)**

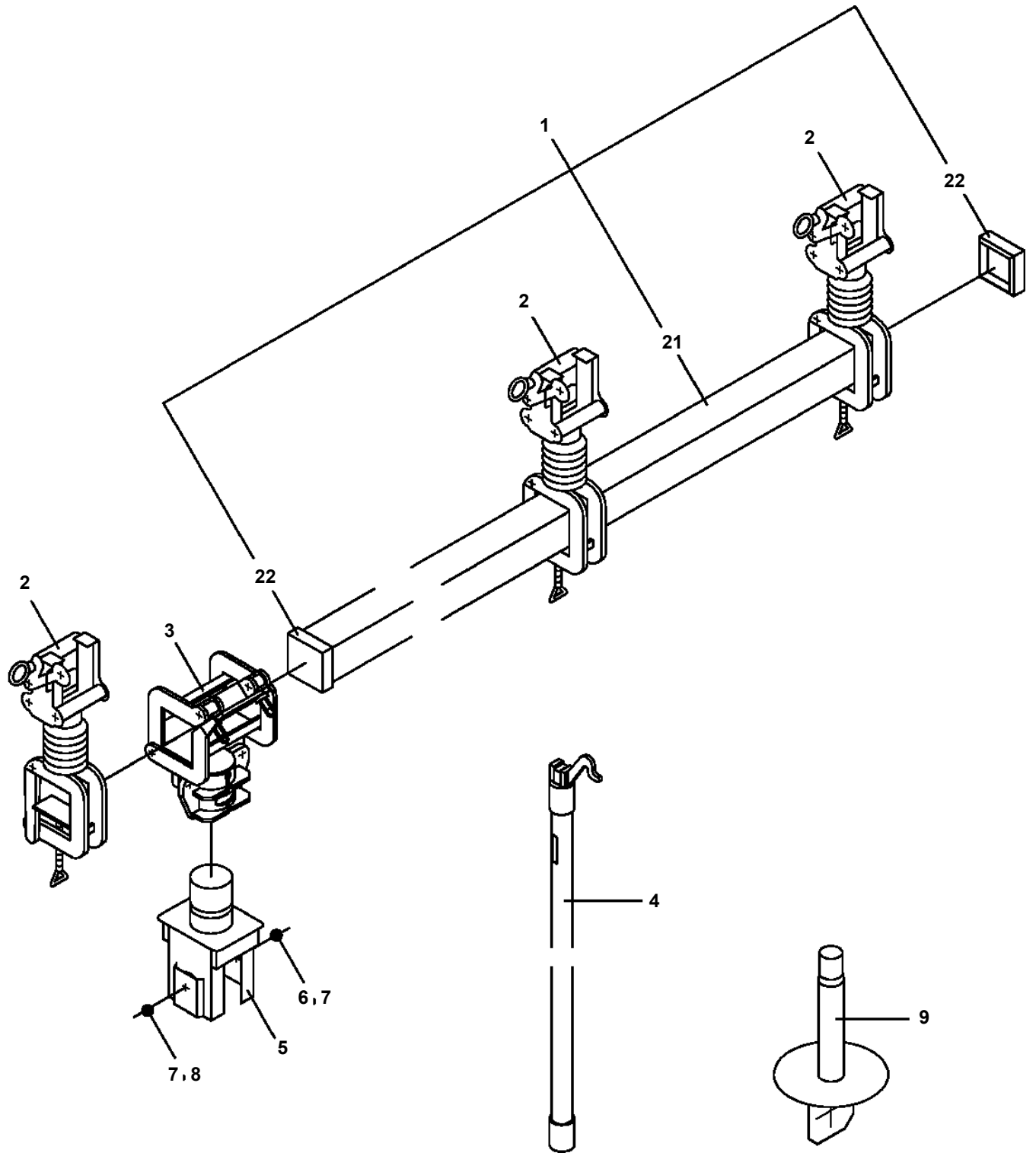


**AT-146-1 42095100062 UPPER
PY1070003-00 ROPE (SAFETY,WHITE)**

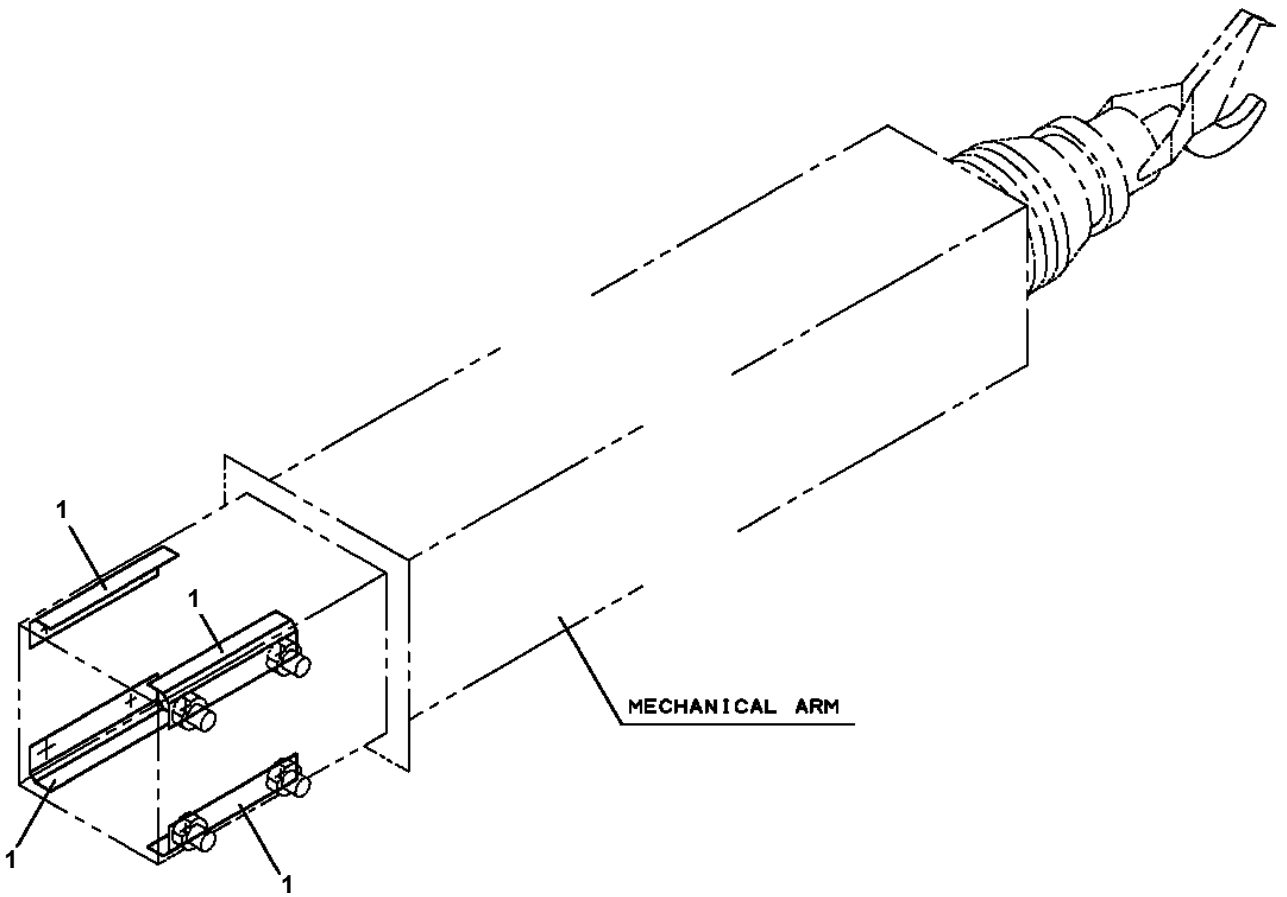
Assembly Name ROPE (SAFETY)



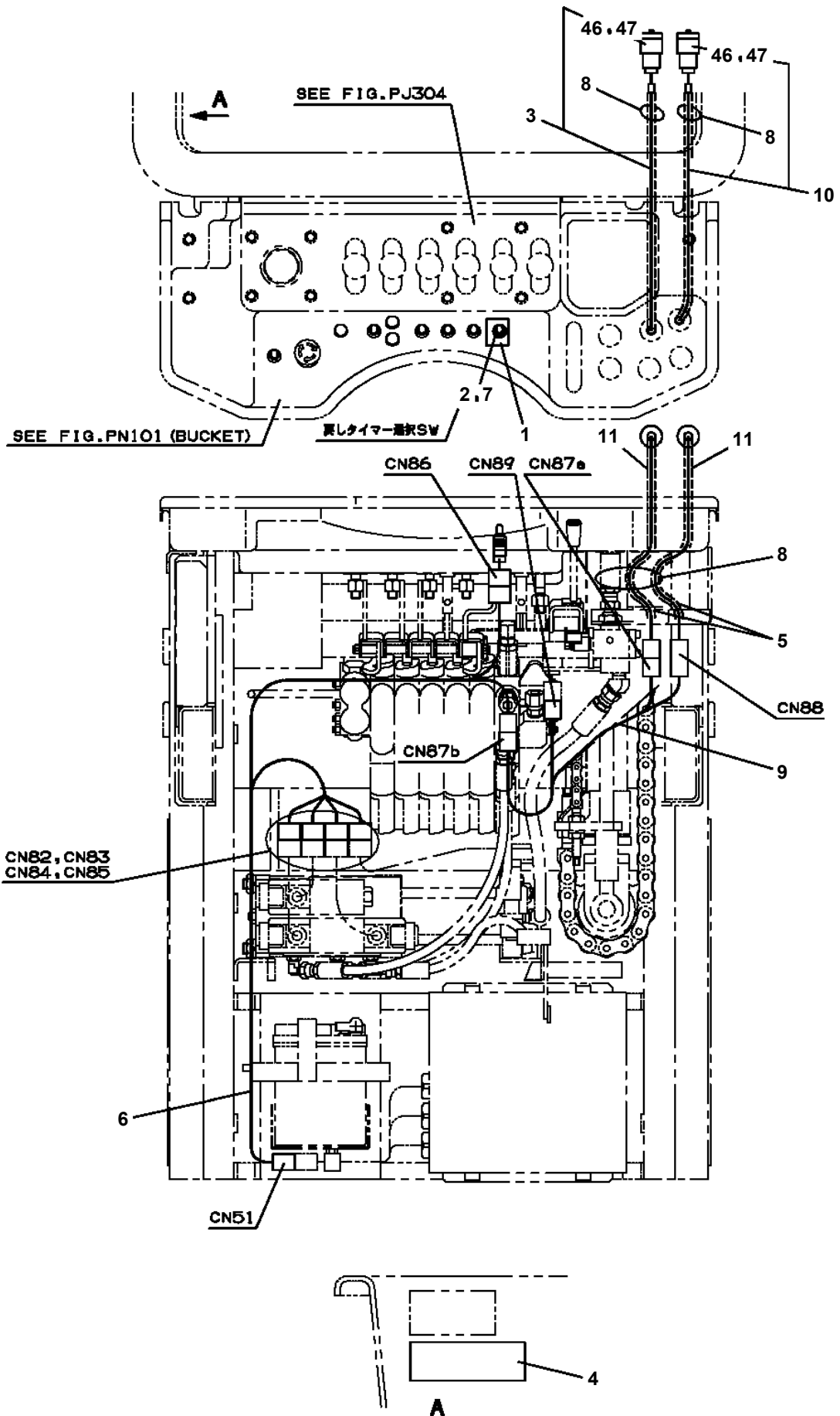
AT-146-1 42095100062 UPPER
PY1080018-00 ARM



**AT-146-1 42095100062 UPPER
PY1080023-00 ARM (REPLACE PLATE,SLIDE)**

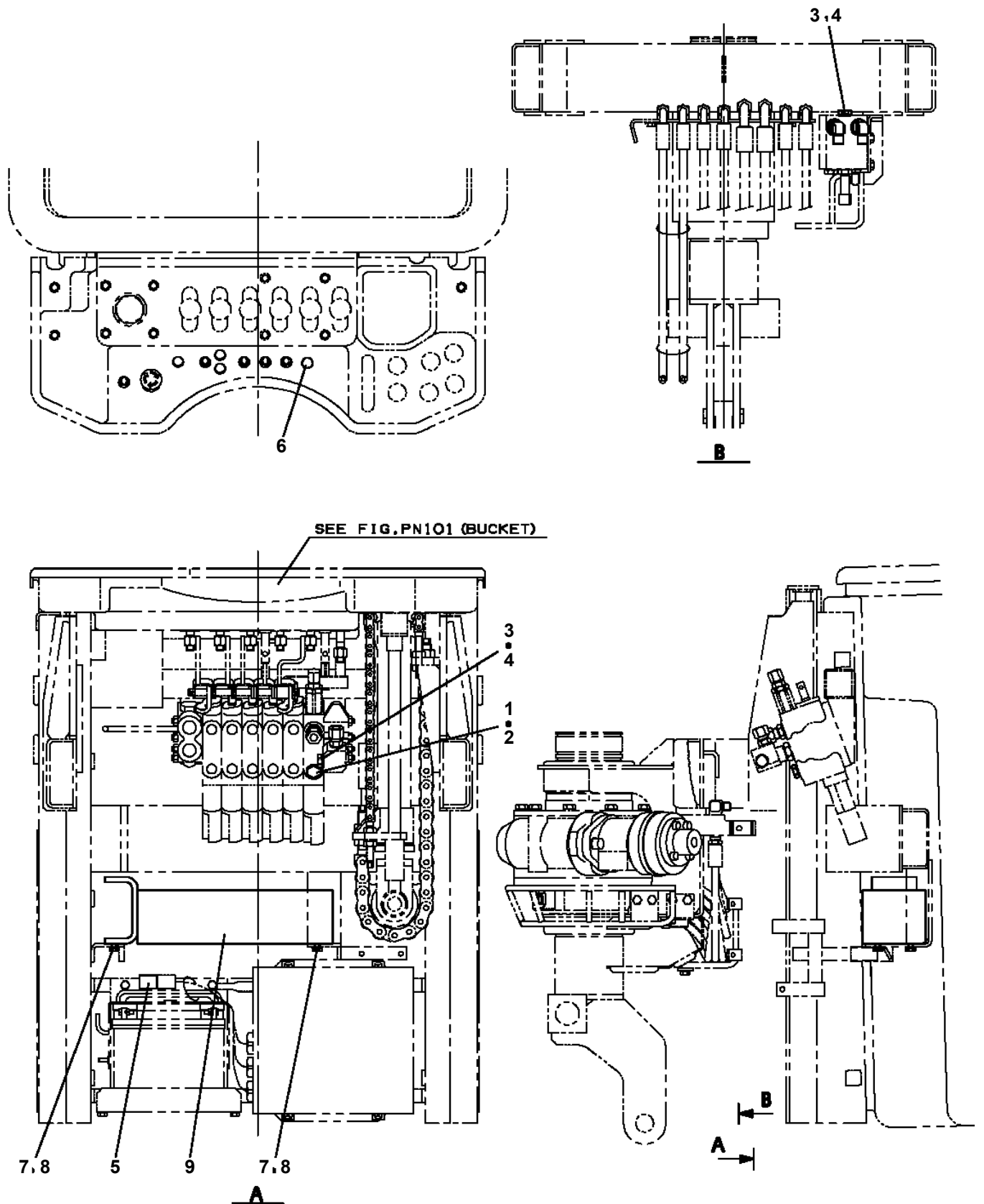


AT-146-1 42095100062 UPPER
 PY1160088-02 BOOSTER (WIRING/ELEC.SELECTOR)



AT-146-1 42095100062 UPPER
PY1160092-00 BOOSTER (NON,BOOSTER)

昇降バケットの場合



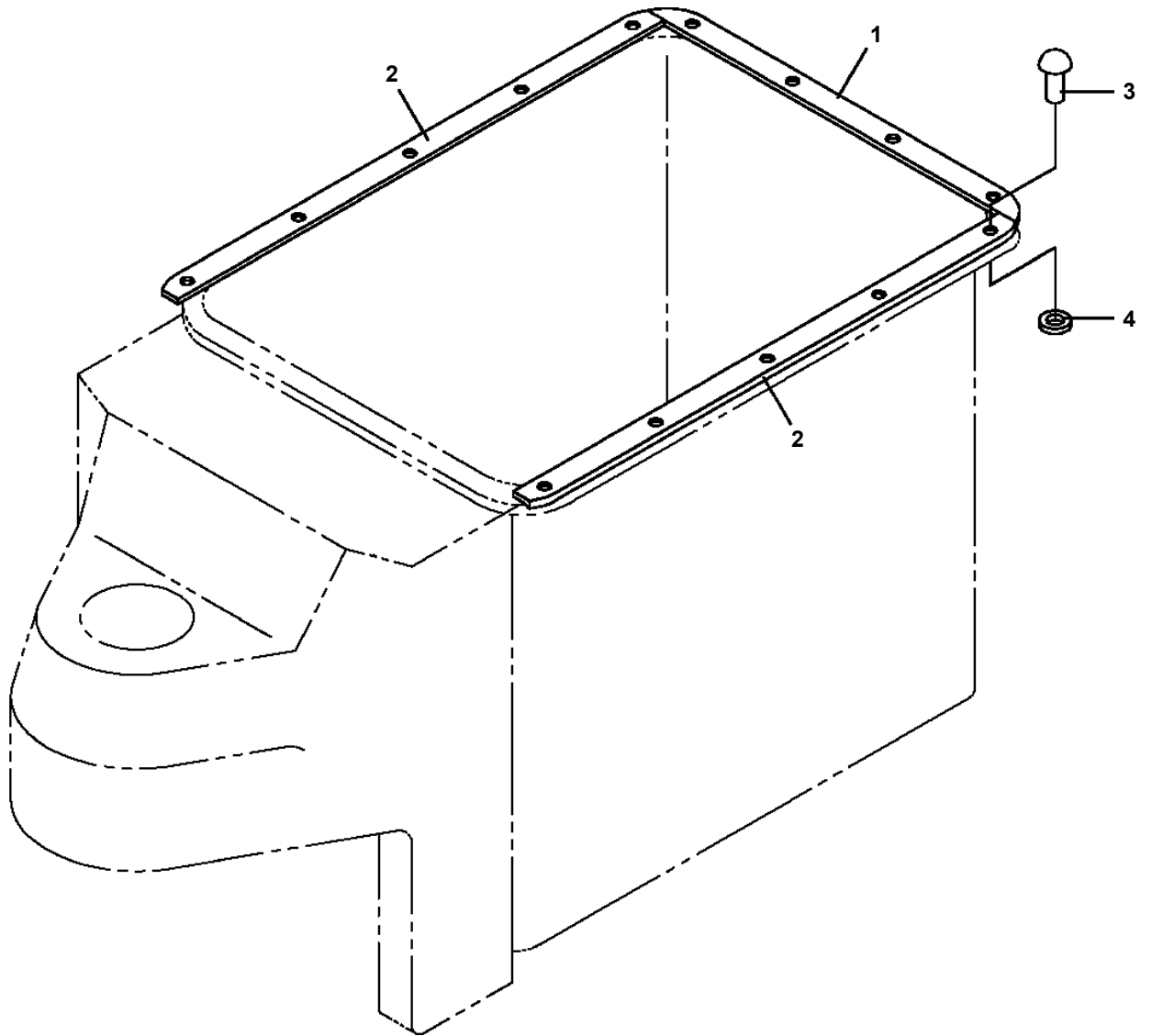
**AT-146-1 42095100062 UPPER
PY1160151-00 BOOSTER (ELEC.,NANABOSHI)**

| | |
|---|---------------------------------|
| 1 | ブースタ BOOSTER |
| 2 | ブースタ (ハイセン) BOOSTER (ELEC.) |
| 3 | ブースタ (ハイカン) BOOSTER (PIPING) |

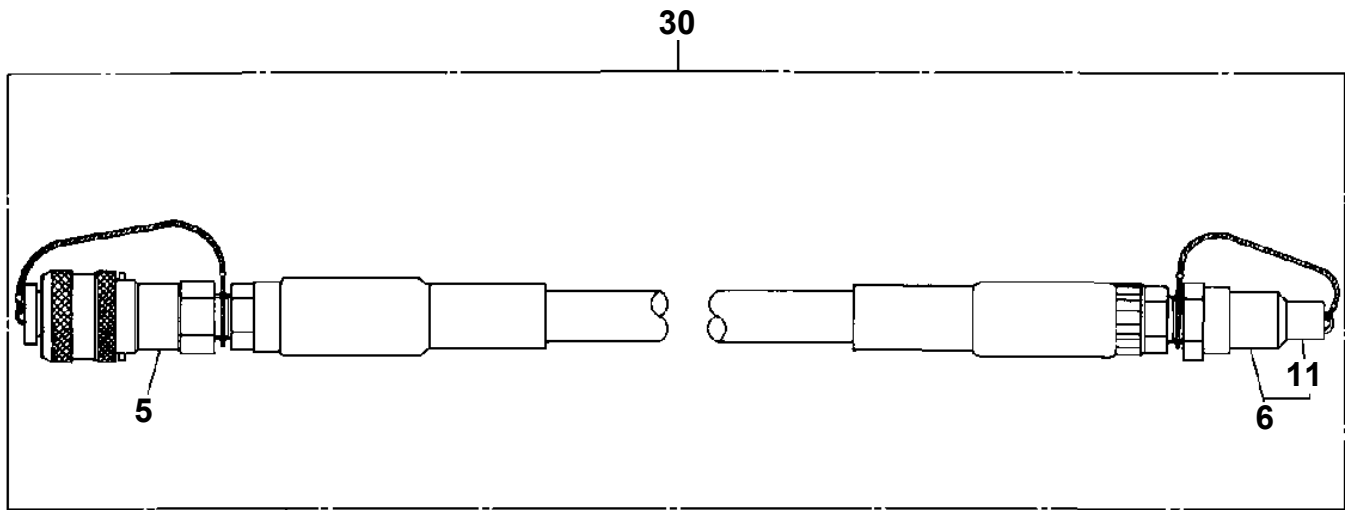
**AT-146-1 42095100062 UPPER
PY1500028-00 SELECTOR,BOOSTER (ELEC.,NANABOSHI)**

| | |
|---|---------------------------------|
| 1 | ブースタ BOOSTER |
| 2 | ブースタ (ハイセン) BOOSTER (ELEC.) |
| 3 | ブースタ (ハイカン) BOOSTER (PIPING) |

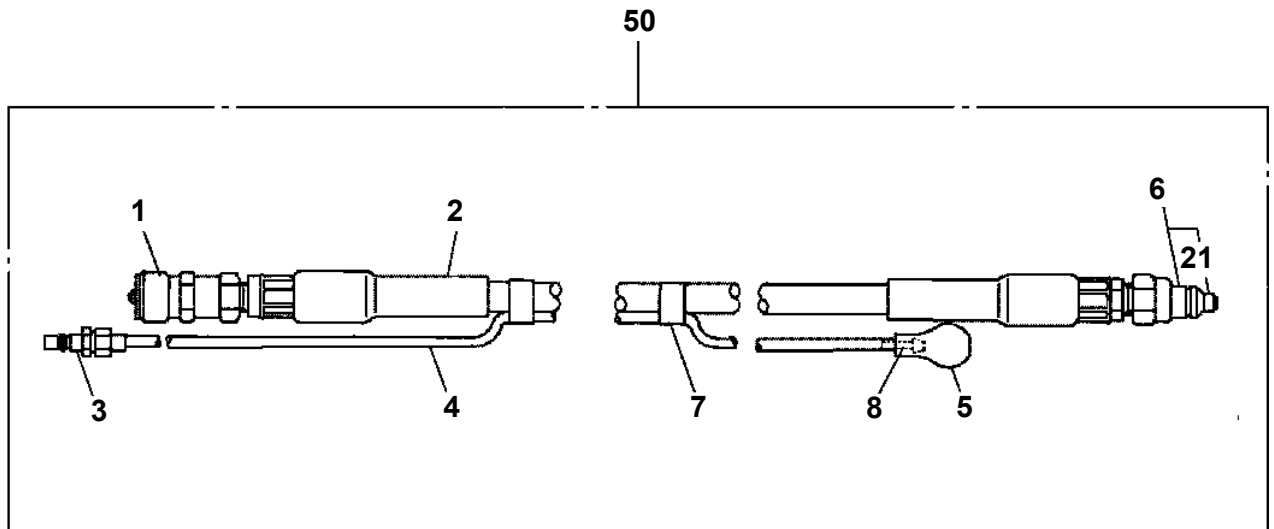
**AT-146-1 42095100062 UPPER
PY1540007-00 COVER,BUCKET (INNER CASE)**



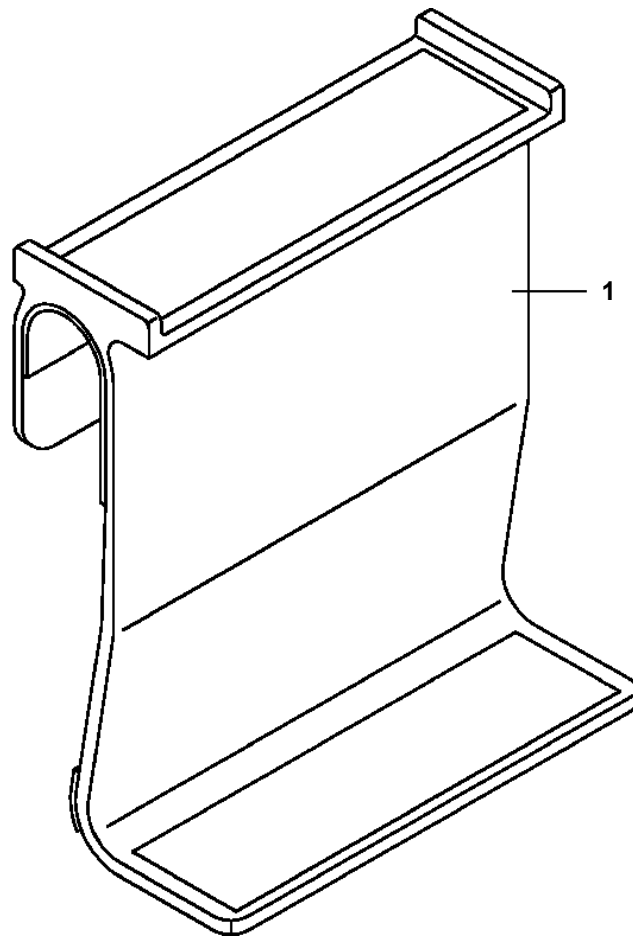
**AT-146-1 42095100062 UPPER
PY1590002-02 HOSE,BOOSTER (MAIL-FEMALE,3M)**



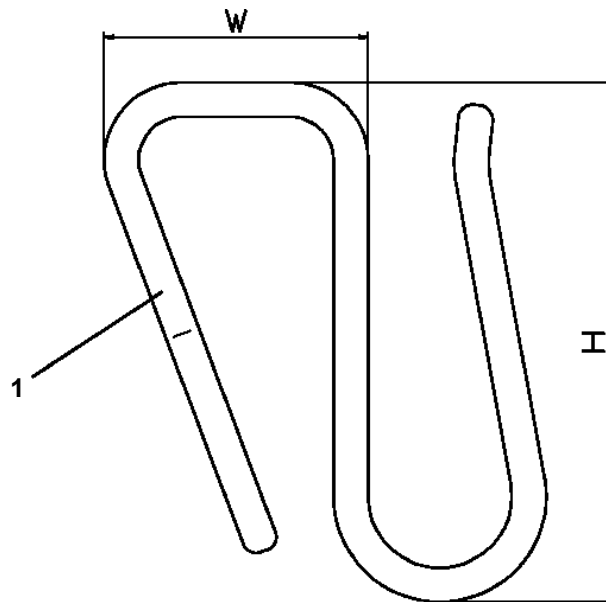
**AT-146-1 42095100062 UPPER
PY1590012-00 HOSE,BOOSTER (WITH AIR BALLOON,5M)**



**AT-146-1 42095100062 UPPER
PY1760003-00 STEP,BUCKET (GRAY,FOR BUCKET INNER)**



**AT-146-1 42095100062 UPPER
PY1790005-01 HANGER (FOR BUCKET,FRP)**



CLICK HERE TO **DOWNLOAD** THE COMPLETE MANUAL

- Thank you very much for reading the preview of the manual.
- You can download the complete manual from: www.heydownloads.com by clicking the link below



- Please note: If there is no response to CLICKING the link, please download this PDF first and then click on it.

CLICK HERE TO **DOWNLOAD** THE COMPLETE MANUAL