

AT-146-1 42095100040 UPPER

**PD2000054-00 SWING UNIT
PF1000469-00 WINCH SYSTEM
PG2000063-00 BOOM UNIT
PH1000399-00 SAFETY DEVICES
PJ3000243-00 BUCKET SYSTEM
PJ5000003-00 BOOSTER UNIT
PK2000237-00 FRAME UNIT
PO1000131-03 INDICATION PLATES
PY1000667-03 OPTIONS,1
PY2000026-00 OPTIONS,2
ASSEMBLY**

CLICK HERE TO **DOWNLOAD** THE COMPLETE MANUAL

- Thank you very much for reading the preview of the manual.
- You can download the complete manual from: www.heydownloads.com by clicking the link below



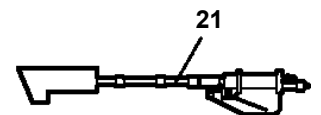
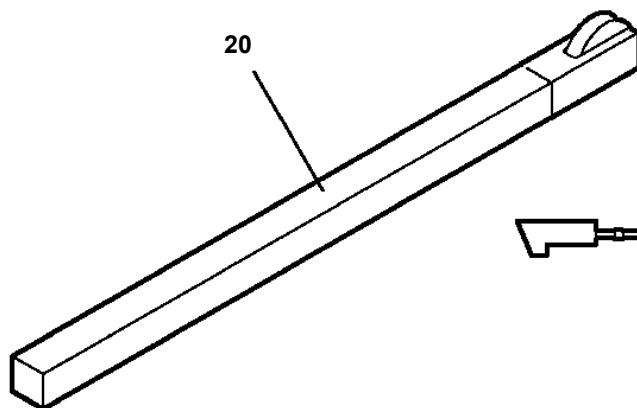
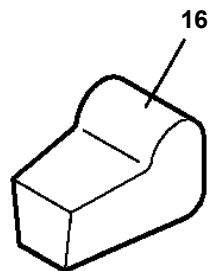
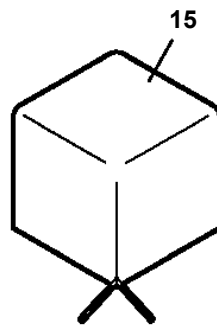
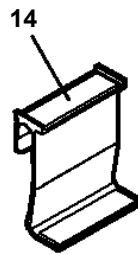
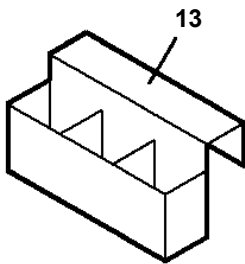
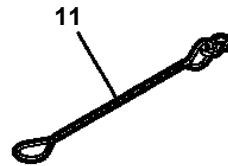
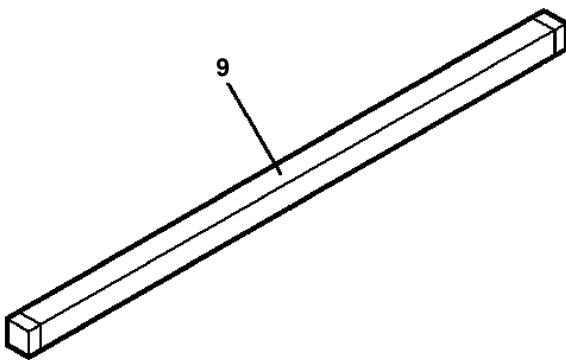
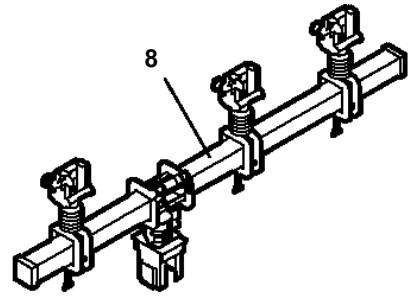
- Please note: If there is no response to CLICKING the link, please download this PDF first and then click on it.

CLICK HERE TO **DOWNLOAD** THE COMPLETE MANUAL

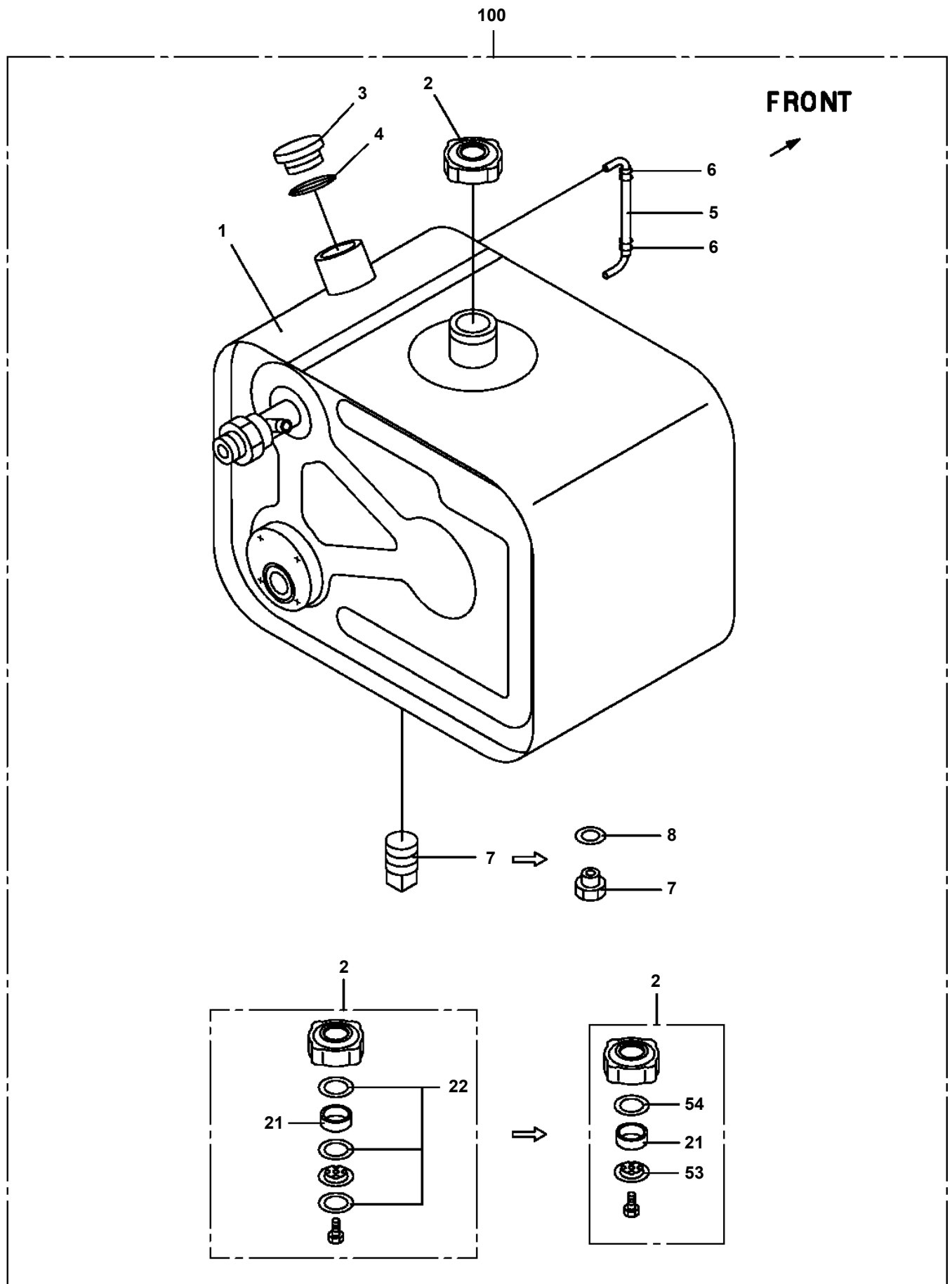
AT-146-1 42095100040 UPPER

Pos No.	Parts No	Parts Name	Qty	Unit	Technical Data	Serial No (Start)	Serial No (End)
1	(*****)	FRAME	1				227351
	(*****)	FRAME	1			227352	
2	(*****)	PIPING (BUCKET)	1				
3	(*****)	ELEC.ASSY (BUCKET)	1				
4	(*****)	OPE.ASSY	1				
5	(*****)	PIPING,GREASE (BUCKET)	1				227351
	(*****)	PIPING,GREASE	1			227352	
11	(*****)	BUCKET (WHITE)	1				
12	(*****)	BUCKET (INNER CASE)	1				
13	(*****)	COVER (FRP,WHITE)	1				
14	(*****)	COVER,BOOM (TOP/FRP,WHITE)	1				
15	42264912000	COVER (CLOTH,WHITE)	1				
16	(*****)	ACCESSORIES (BUCKET INNER MAT)	1				

AT-146-1 42095100040 UPPER
PY2000026-00 OPTIONS,2

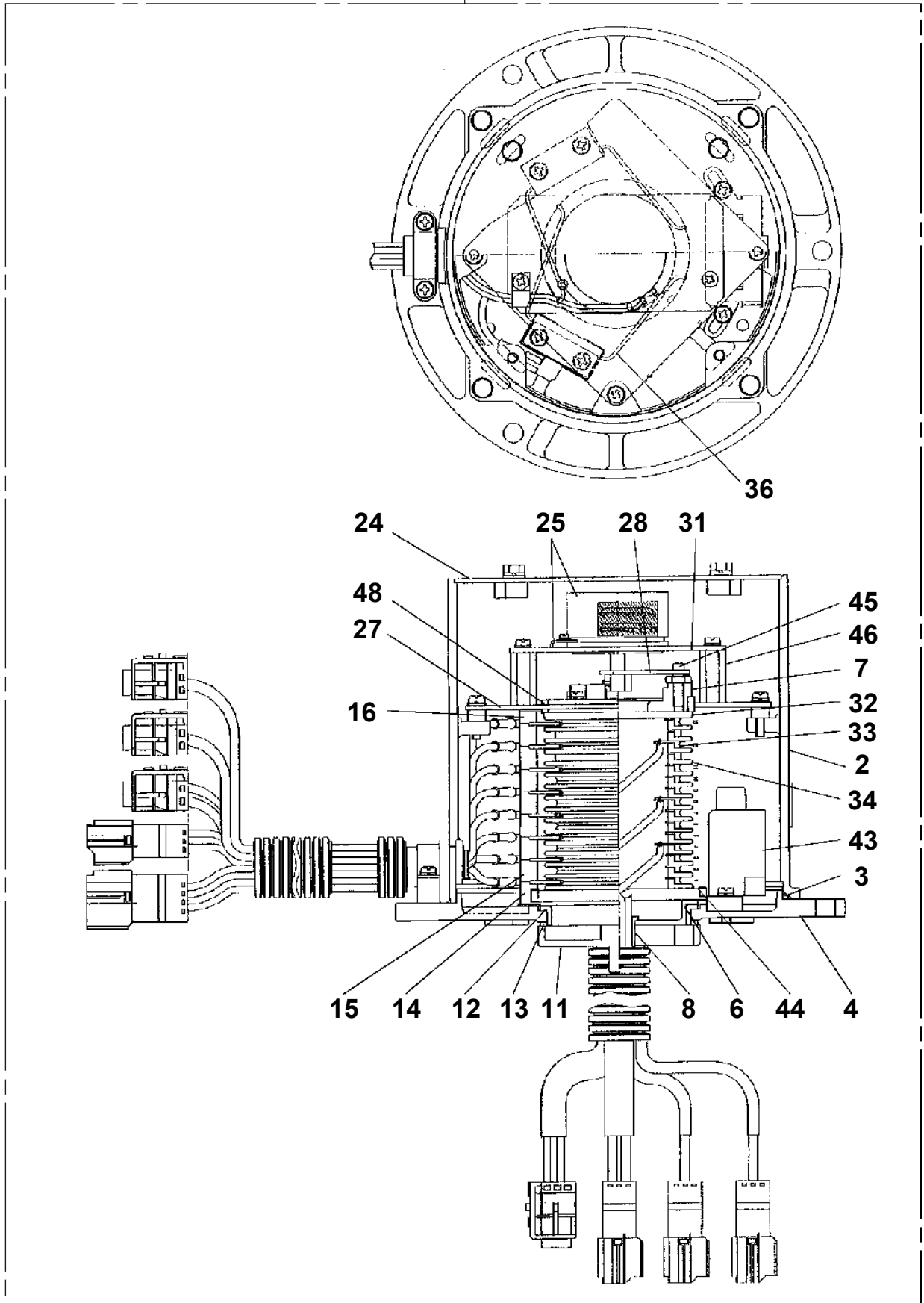


AT-146-1 42095100040 UPPER
PB1130209-02 TANK,OIL

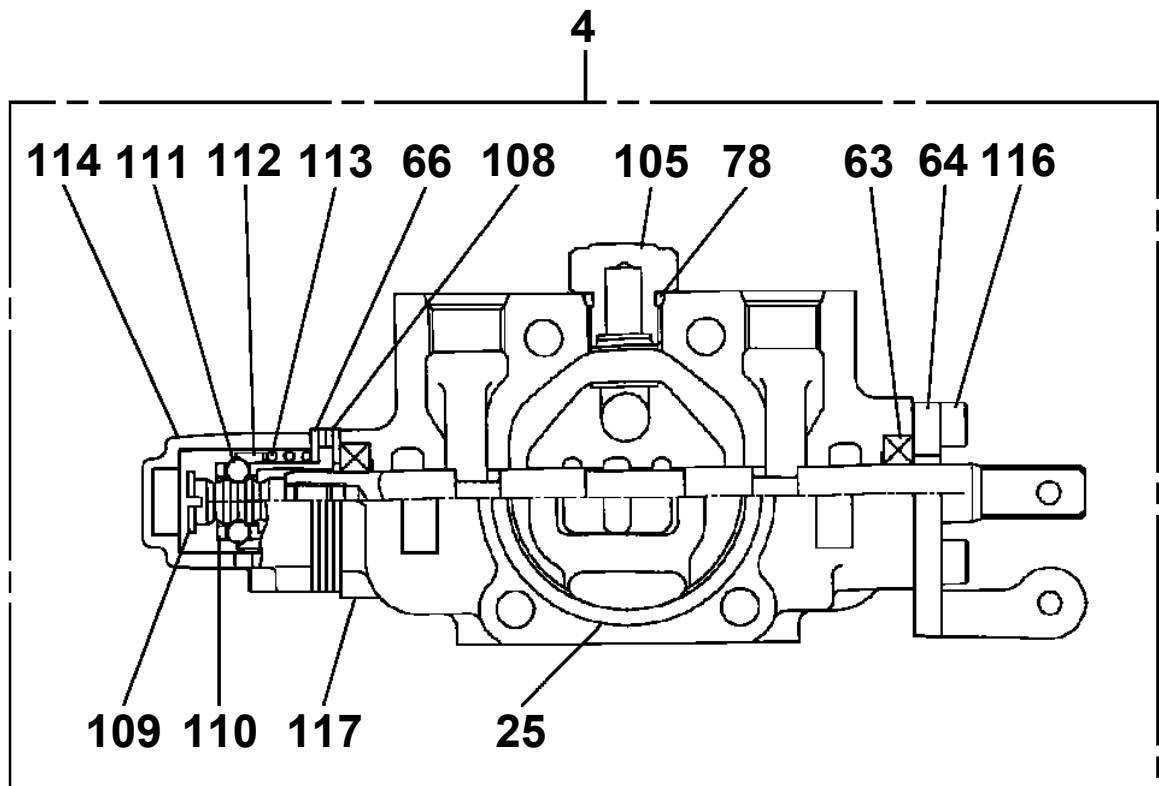
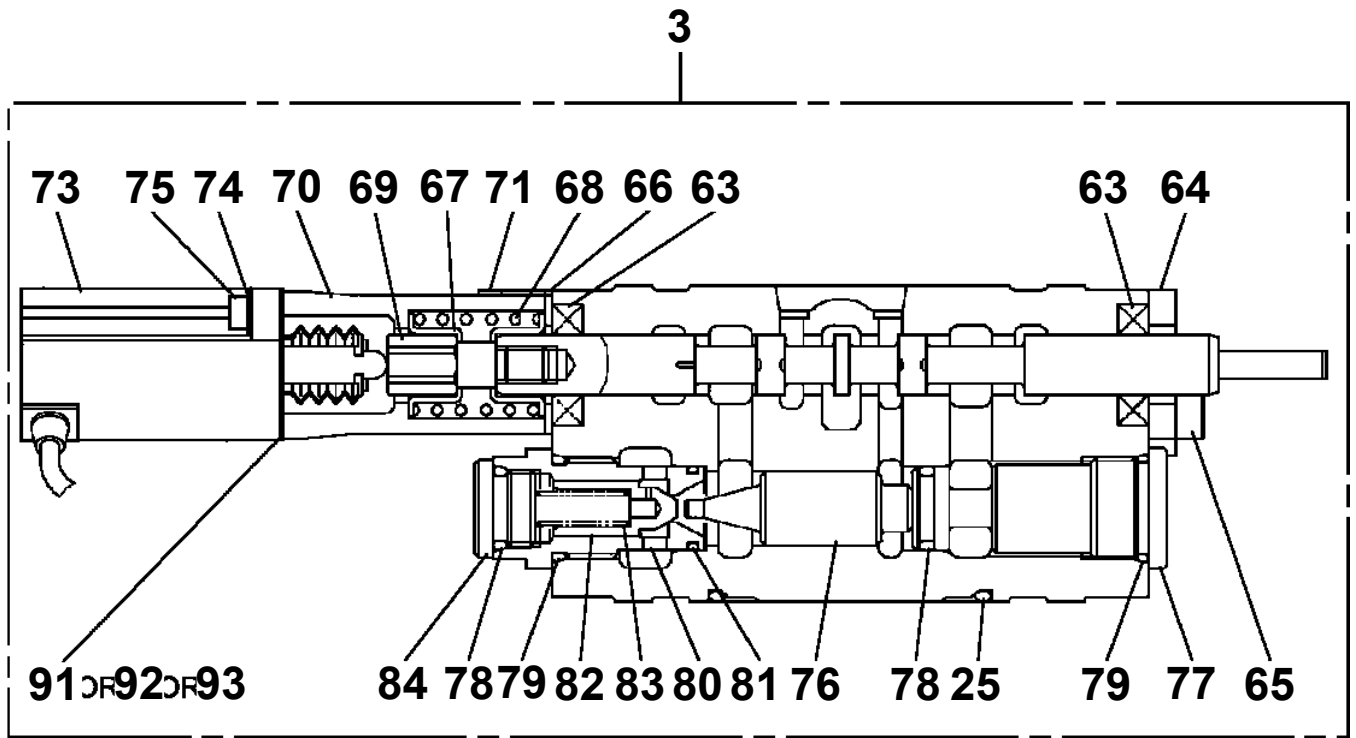


**AT-146-1 42095100040 UPPER
PB1310033-00 BRUSH,ROTARY JOINT**

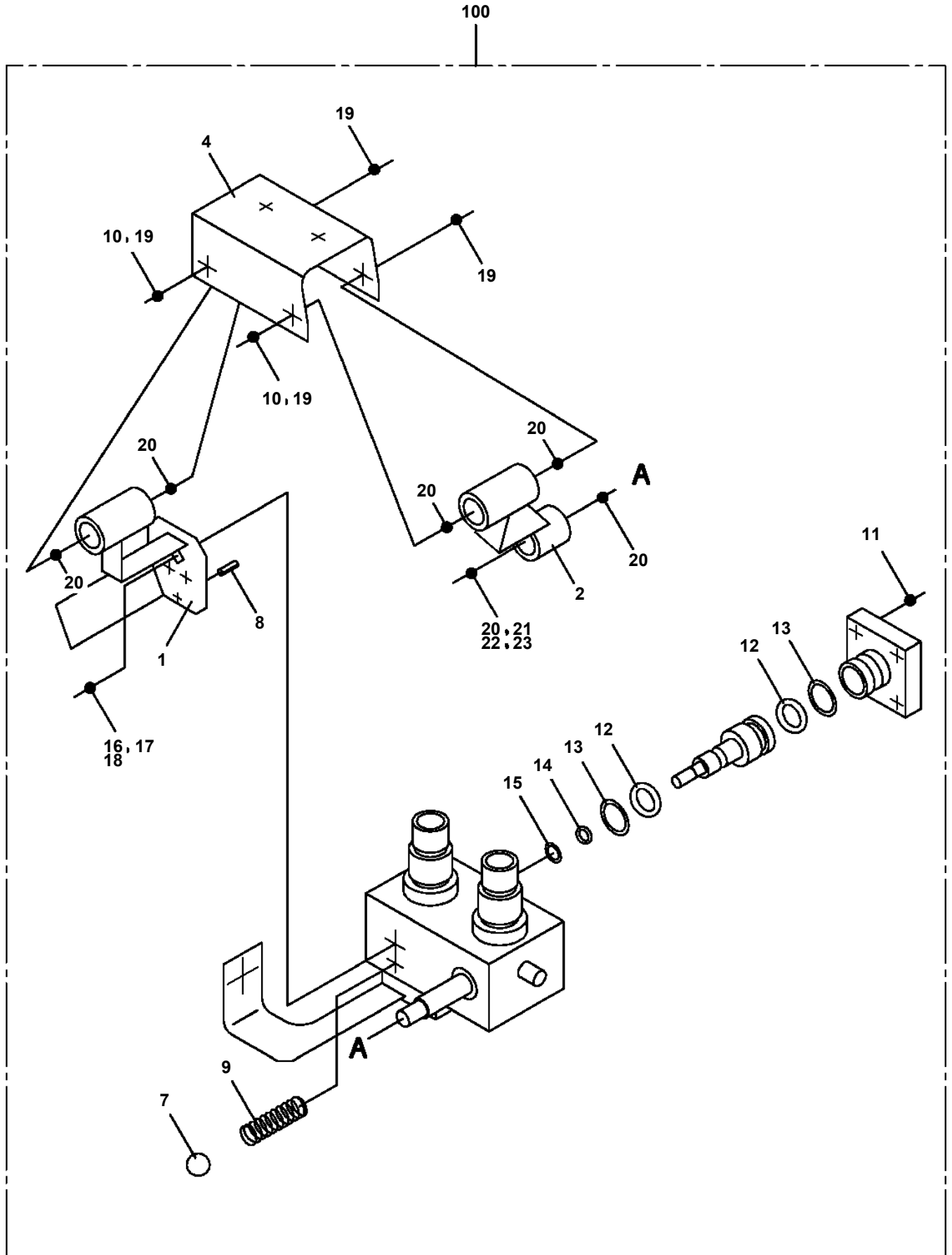
100



**AT-146-1 42095100040 UPPER
PB1320537-01 VALVE,MANUAL CONTROL**



**AT-146-1 42095100040 UPPER
PB1320590-01 VALVE, MANUAL CONTROL (BOOSTER)**



AT-146-1 4209510040 UPPER

Pos No.	Parts No	Parts Name	Qty	Unit	Technical Data	Serial No (Start)	Serial No (End)	Remarks
92	80400160129	JOINT	2					
93	91002801400	O-RING	1		1B P14		227949	
	91002801400	O-RING	8		1B P14			
94	80400160131	JOINT	1					
96	80441010604	FITTING	1					
97	80400160127	JOINT	7					
98	91002801100	O-RING	13		1B P11			
	91002801100	O-RING	2		1B P11		227976	
	91002801100	O-RING	1		1B P11		227949	
	91002801100	O-RING	1		1B P11	227950	227976	
	91002801100	O-RING	3		1B P11	227977		
100	80430620600	JOINT (WITH O-RING)	3		L,G3/8-G3/8			
103	37000928370	JOINT	1		S,G1/2-G1/2			
111	36625000000	VALVE ASSY,CHECK	1					
121	36636340000	VALVE,MANUAL CONTROL	2					
127	80430620400	JOINT	2					
131	36601610001	VALVE,RELIEF	1				227656	
	36606420000	VALVE,RELIEF	1			227657	227949	
	(*****)	VALVE,RELIEF	1			227950	227976	
132	42340240500	FILTER,OIL	1				227949	
133	80491303020	JOINT (WITH O-RING)	1		L,G3/8-G1/4		227949	
134	36672530000	FILTER (WITH O-RING)	2					
136	80481302025	JOINT	1		L,G1/4-G1/4	227950		
141	36606670000	VALVE,RELIEF	1			227977		
154	80400160128	JOINT	1		S,G3/8-G1/4			

AT-146-1 4209510040 UPPER

Pos No.	Parts No	Parts Name	Qty	Unit	Technical Data	Serial No (Start)	Serial No (End)	R
1	42613361001	OUTRIGGER (REAR/INNER CASE)	2					
4	31611640150	SPRING	2					
5	90171108016	BOLT	4		M8X16			
6	37000504780	PLATE	N		T=0.6			
7	90302041001	WASHER,SPRING	24		10			
9	42612850300	PLATE	4					
11	90101206014	BOLT	4		M6X14			
12	90302040601	WASHER,SPRING	4		6			
13	42612850400	BLADE	2					
16	42613350100	PLATE	12					
17	90171110025	BOLT	24		M10X25			
18	37000501960	PLATE	N		T=0.5		227414	
	37000581940	PLATE	N		T=0.5	227415		
19	37000501970	PLATE	N		T=1.5		227414	
	37000506590	PLATE	N		T=1.6	227415		
20	90303070601	WASHER,PLAIN	4		6			
21	37002011280	PLATE,SLIDE	16		T=9.5			
22	90101208012	BOLT	4		M8X12			
23	90302040801	WASHER,SPRING	4		8			
24	37000575240	PLATE	2		T=3			
25	37000178190	PIN	2					

AT-146-1 4209510040 UPPER

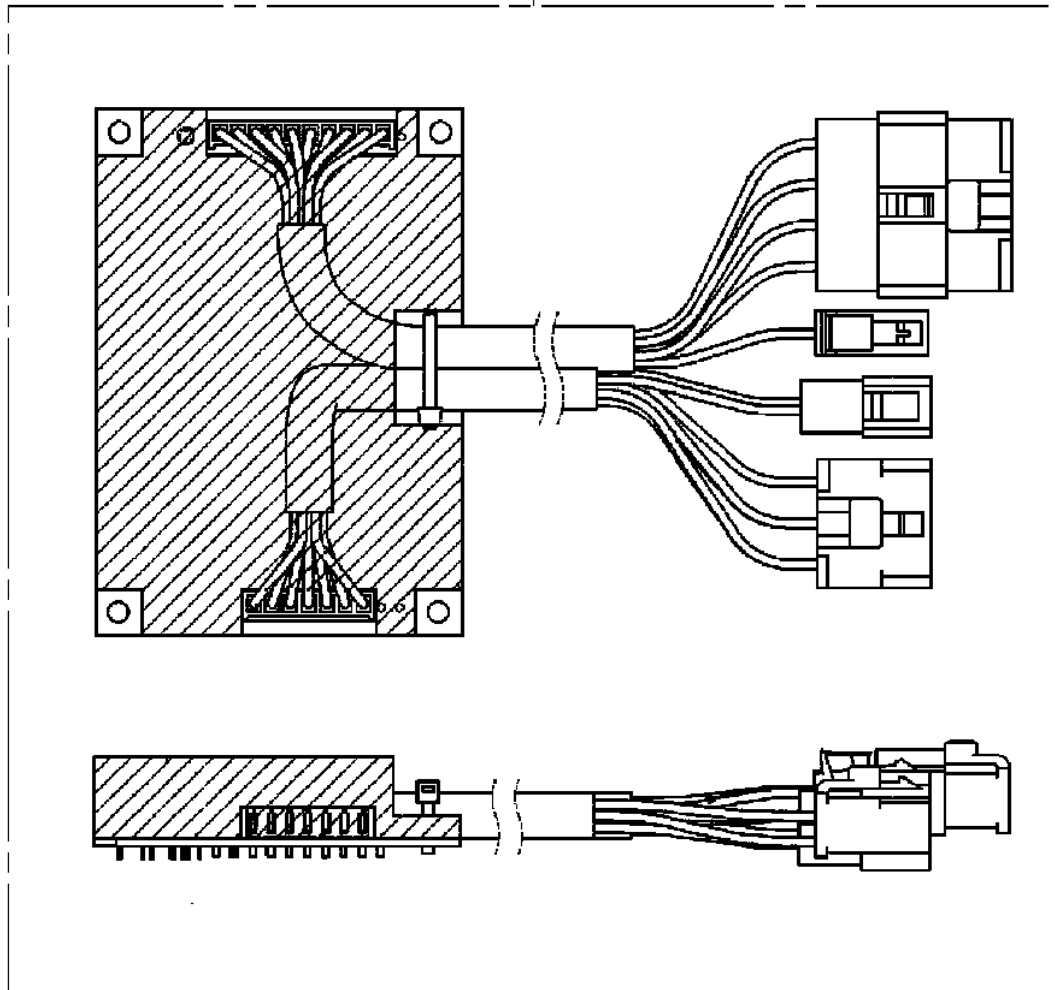
Pos No.	Parts No	Parts Name	Qty	Unit	Technical Data	Serial No (Start)	Serial No (End)
1	42613351100	CASE,INNER	1				
2	42613351200	CASE,INNER (JACK)	1				
4	36035100000	CYLINDER,JACK	1				
5	42613351400	FLOAT ASSY	1				
6	37000171720	PIN	1				
7	80601110250	RING,RITAINING	2		S25		
8	37000169010	PIN	1		30		
9	80601110300	RING,RITAINING	2		S30		
10	36625740001	VALVE,CHECK	1				
11	90171108055	BOLT	4		M8X55		
12	37000138750	PIN	1		18		
13	80136032036	PIN,SPLIT	2		3.2X36		
14	80400160127	JOINT	1				
15	91002801100	O-RING	1		1B P11		
16	36672460000	FILTER (NIPPLE TYPE)	1				
17	42612851010	COVER	1				
18	90186206014	BOLT,FLANGE	2		M6X14		
19	37000112320	PIN	1				
20	80601110120	RING,RITAINING	2		S12		
21	91810130240	FASTENER	2				
22	31201770100	PLATE,SLIDE	8		T=3.0		
41	36042810000	CYLINDER,EXTENSION (FRONT)	1				
42	80400160127	JOINT	2				
43	91002801100	O-RING	3		1B P11		
44	37002474960	HOSE	1		L=1620		
45	42612851350	HARNES	1				
46	91810130240	FASTENER	13				
61	42612851420	TRUNNION	1				
100	42613351001	OUTRIGGER (FRONT,L/INNER CASE)	1				

AT-146-1 42095100040 UPPER

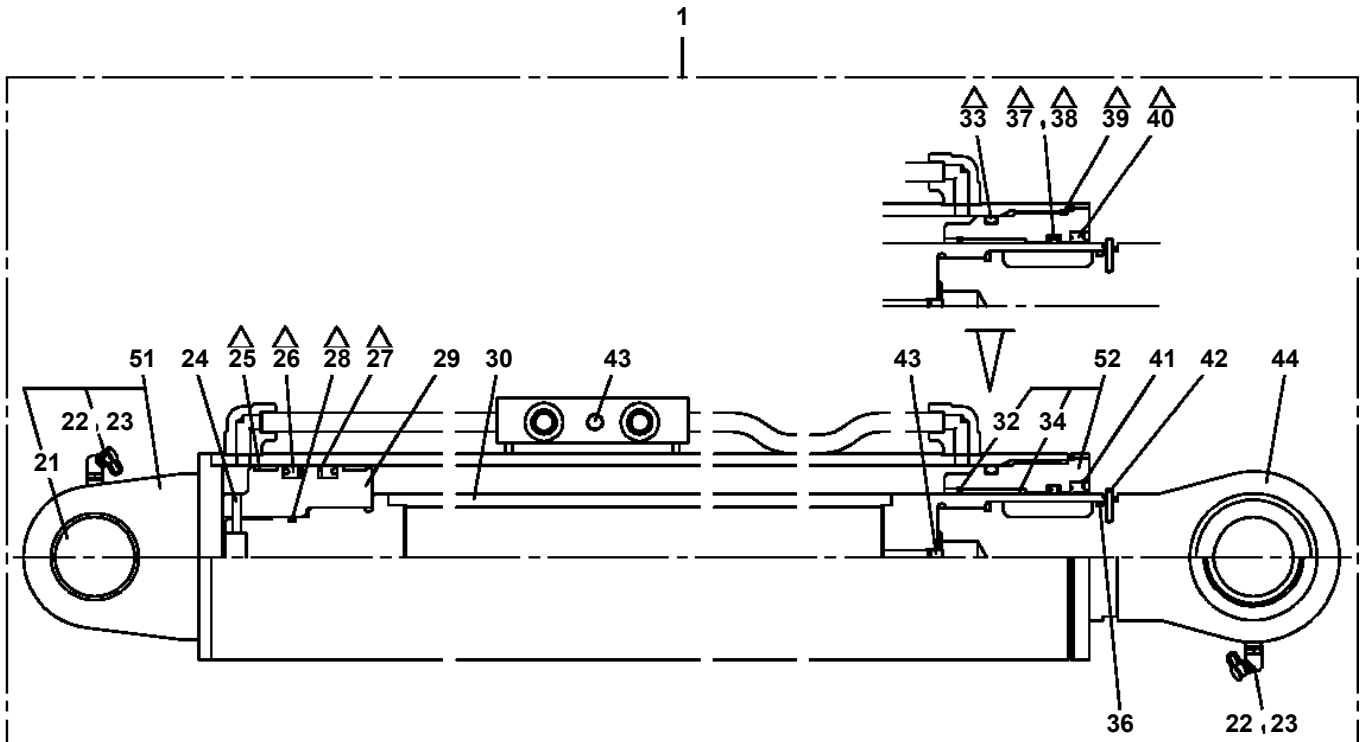
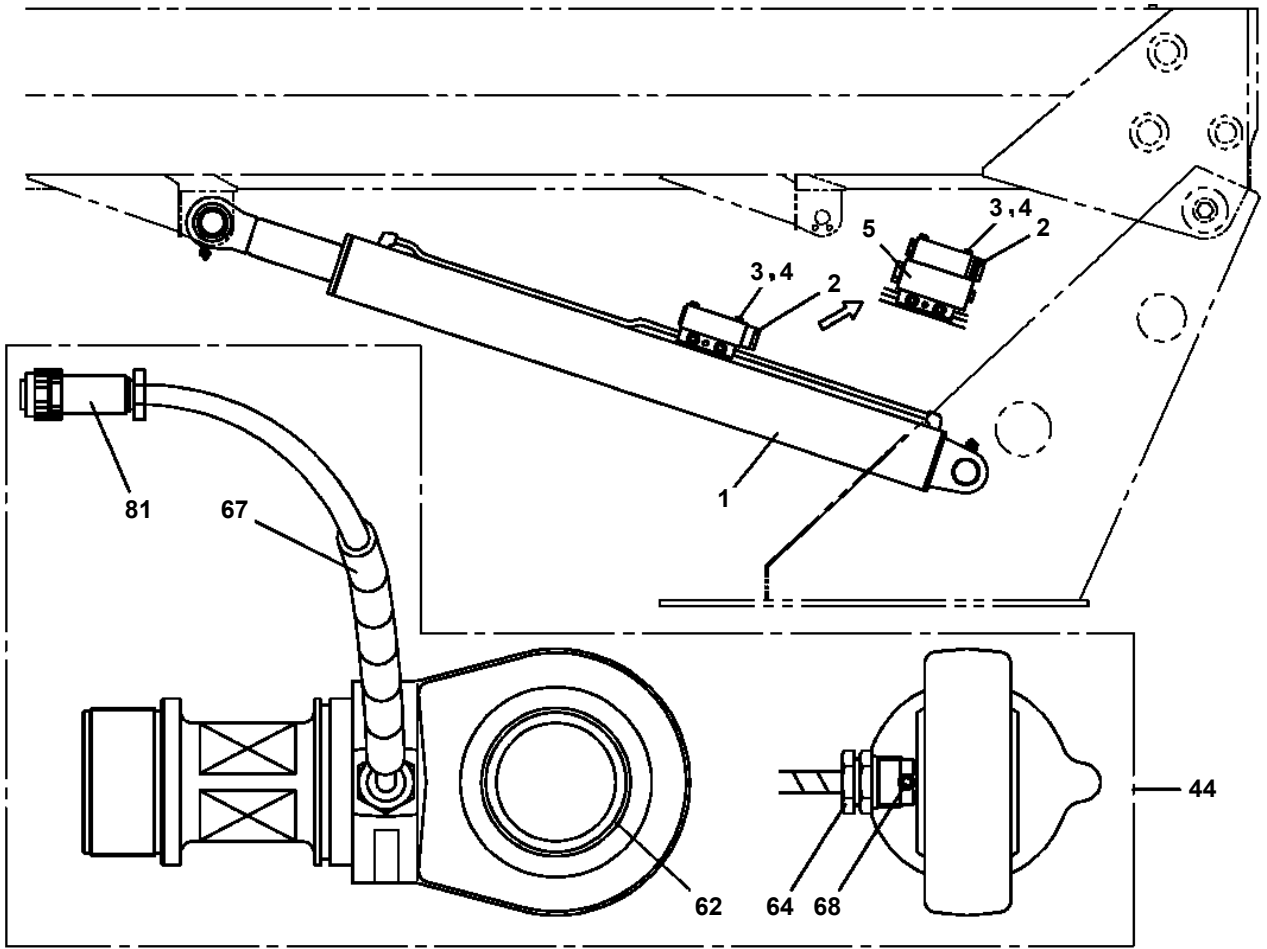
Pos No.	Parts No	Parts Name	Qty	Unit	Technical Data	Serial No (Start)	Serial No (End)	Rema
1	42651727510	CASE ASSY (WITH HARENSS)	1					
2	42651727520	COVER (CASE)	1					
3	42651727530	PACKING (COVER)	1					
4	42651727540	PANEL	1					
5	42651727550	BOARD,CIRCUIT	1					
31	(*****)	P-ROM	1					
50	42652032000	INDICATOR,OUTRIGGER	1					

**AT-146-1 42095100040 UPPER
PC5420023-00 CONTROLLER**

100



**AT-146-1 42095100040 UPPER
PE1010395-01 CYLINDER,ELEVATING**

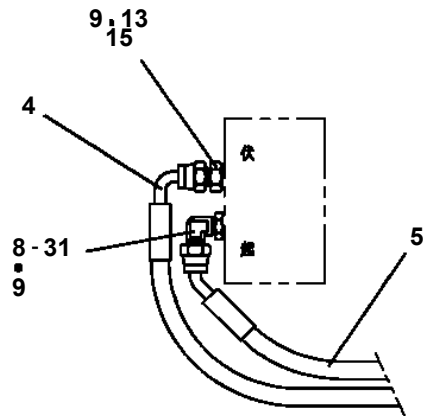


Δ:PACKING SET KEY NO.53 (KEY NO.25,26,27,28,33,37,38,39,40)

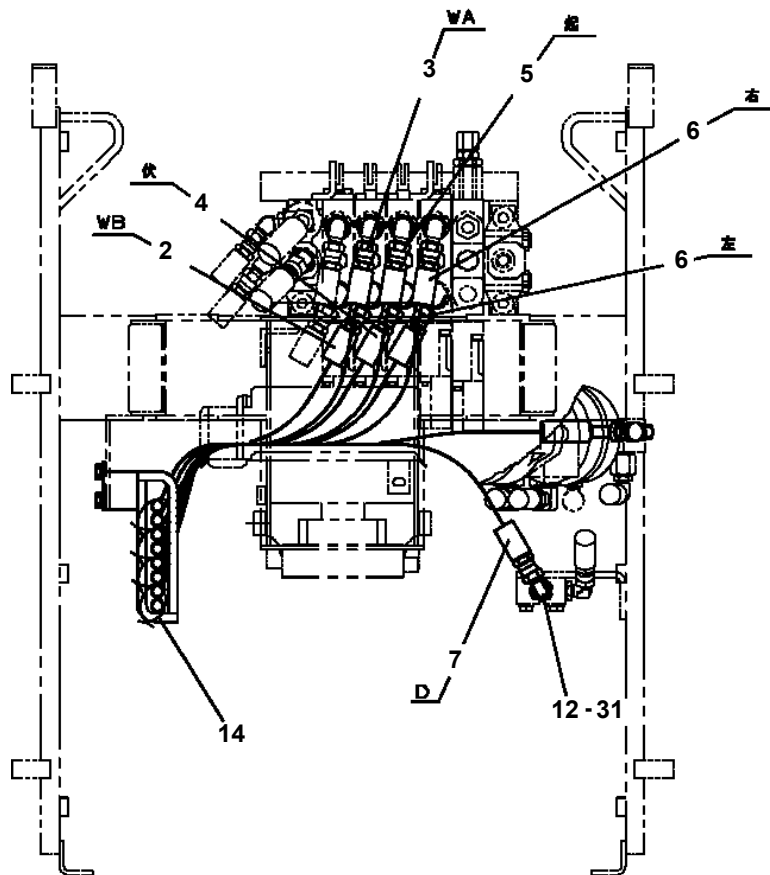
AT-146-1 42095100040 UPPER

Pos No.	Parts No	Parts Name	Qty	Unit	Technical Data	Serial No (Start)	Serial No (End)	Remarks
500	36073820000	WINCH	1					

AT-146-1 42095100040 UPPER
 PF1200315-00 PIPING,WINCH



A



B

AT-146-1 4209510040 UPPER

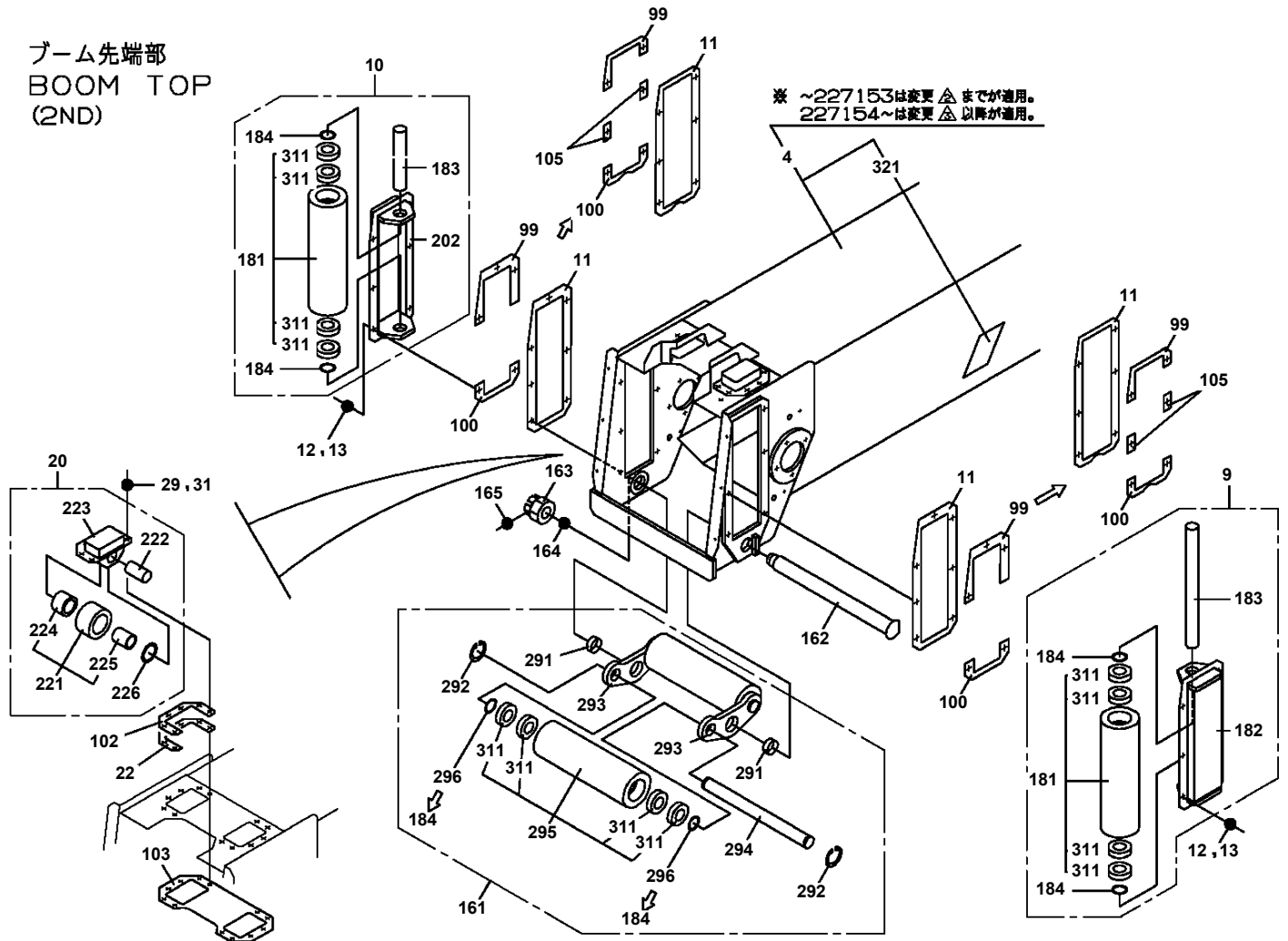
Pos No.	Parts No	Parts Name	Qty	Unit	Technical Data	Serial No (Start)	Serial No (End)	Remarks
1	80601110300	RING,RITAINING	1		S30			
2	90101210014	BOLT	2		M10X14			
3	90238402008	NUT,CASTLE	1		M20			
4	80136340040	PIN,SPLIT	1		4X40			
5	90303072001	WASHER,PLAIN	1		20			
6	42311301400	FRAME ASSY	1					
7	37000178680	PIN	1					
8	82400000459	CAP	1					
9	37000178700	PIN	1					
10	42311301702	FRAME	1					
11	42220241030	ROPE,WIRE	1					
12	82112001022	SLEEVE	2					
13	42311802100	PIN	1					
14	42311301050	SUPPORT	1					
15	82100001411	TUBE,SPIRAL	1	M	SE-08BK			
16	90172110050	BOLT,HEXAGON SOCKET	4		M10X50			
17	36624630000	VALVE,CHECK	1					
18	36052880000	CYLINDER,WINCH JIB	1					
19	42311302001	TABLE,SLEWING	1					
20	42310952010	GEAR	1					
21	80911114190	KEY	1		10X8X25			
22	80601111100	RING,RITAINING	2		S110			
25	90302041001	WASHER,SPRING	6		10			
26	42311301030	PLATE	2					
27	37000178710	PIN	2					
28	36663080000	MOTOR,HYDRAULIC	1					
29	37001508610	BOLT,HEXAGON SOCKET	2		M12X50			
30	42310952020	WASHER,PLAIN	2		12			
31	42311211010	GEAR	1					
32	42311211020	STOPPER	1					
33	90171108030	BOLT	1		M8X30			
34	90302040801	WASHER,SPRING	12		8			
35	90180208012	BOLT,BUTTON	6		M8X12			
36	90180210020	BOLT,BUTTON	4		M10X20			
37	42310822050	WIRE	1					
38	80513006008	BEARING,BALL	2					
39	42311301900	GUIDE	1					
40	42310952400	SUPPORT	1					
41	80728106028	PIN,SPRING	2		6X28			
42	42310952600	GUIDE	2					
43	42310952700	GUIDE	2					
44	80173304010	SCREW,MACHINE	4		M4X10			
45	42311301150	PIN ASSY	1					
46	90172108016	BOLT,HEXAGON SOCKET	6		M8X16			
47	82456101000	NIPPLE,GREASE	3		A-PT1/8			
48	91810130240	FASTENER	2					
49	80560006000	BALL,STEEL	1		6			
50	42312145001	PIN ASSY	1					
51	82430208020	GRIP	1					
56	42311301301	LEVER	1					
57	42311301270	SUPPORT	1					
58	37001200230	SPRING	1					
59	42311301260	PIN	1					
60	90303071201	WASHER,PLAIN	1		12			
61	80136332018	PIN,SPLIT	1		3.2X18			
62	42311301351	PIN	1					
63	37000105250	PIN	1					
64	80136320010	PIN,SPLIT	1		2X10			
65	90201200800	NUT	1		M8			
66	90101208025	BOLT	1		M8X25			
67	37001200480	SPRING	1					
68	90171110025	BOLT	1		M10X25			
69	90201201000	NUT	1		M10			

AT-146-1 42095100040 UPPER

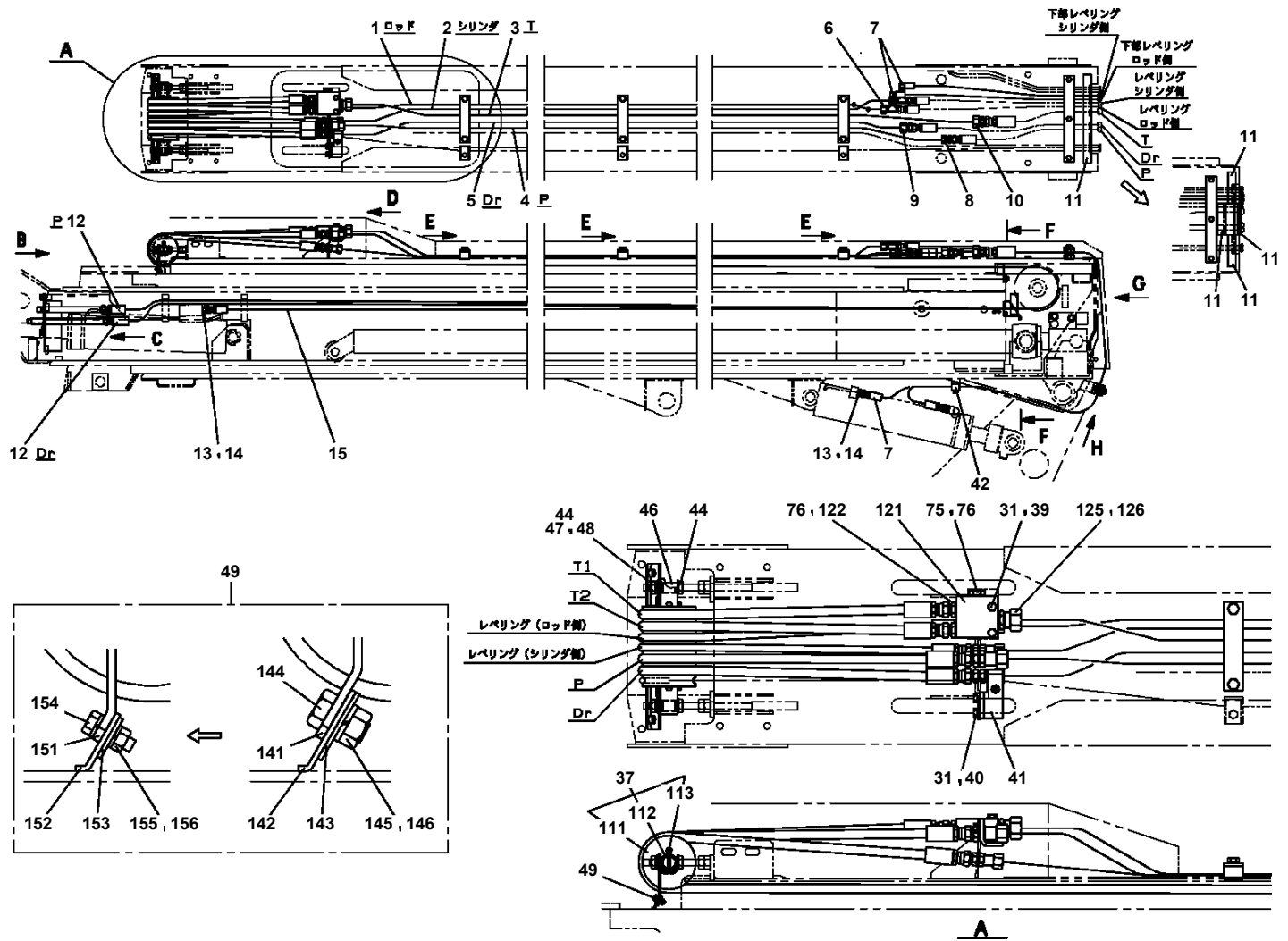
Pos No.	Parts No	Parts Name	Qty	Unit	Technical Data	Serial No (Start)	Serial No (End)	Remarks	Pages
2	42220041050	PLATE,NAME	2						
3	42220610100	GUIDE	2						
4	37000504780	PLATE	4		T=0.6				
5	90183106020	BOLT	12		M6X20				
6	42220580030	SHIM	2		T=0.5				
7	37001002260	SHEAVE	1						
8	37000312170	SPACER	2						
9	37000302490	SPACER	2		L=2				
10	80603110350	RING,RITAINING	2		C35				
11	42220400040	COVER	2						
12	42220400050	PIN	1						
13	42220400020	GUIDE	1						
14	42220400010	GUIDE	1						
15	42220580010	GUIDE	2						
16	37000504770	PLATE	4		T=1.0				
31	42220420201	JIB	1						
41	80516006207	BEARING,BALL	1						

AT-146-1 42095100040 UPPER PG1010727-02 BOOM

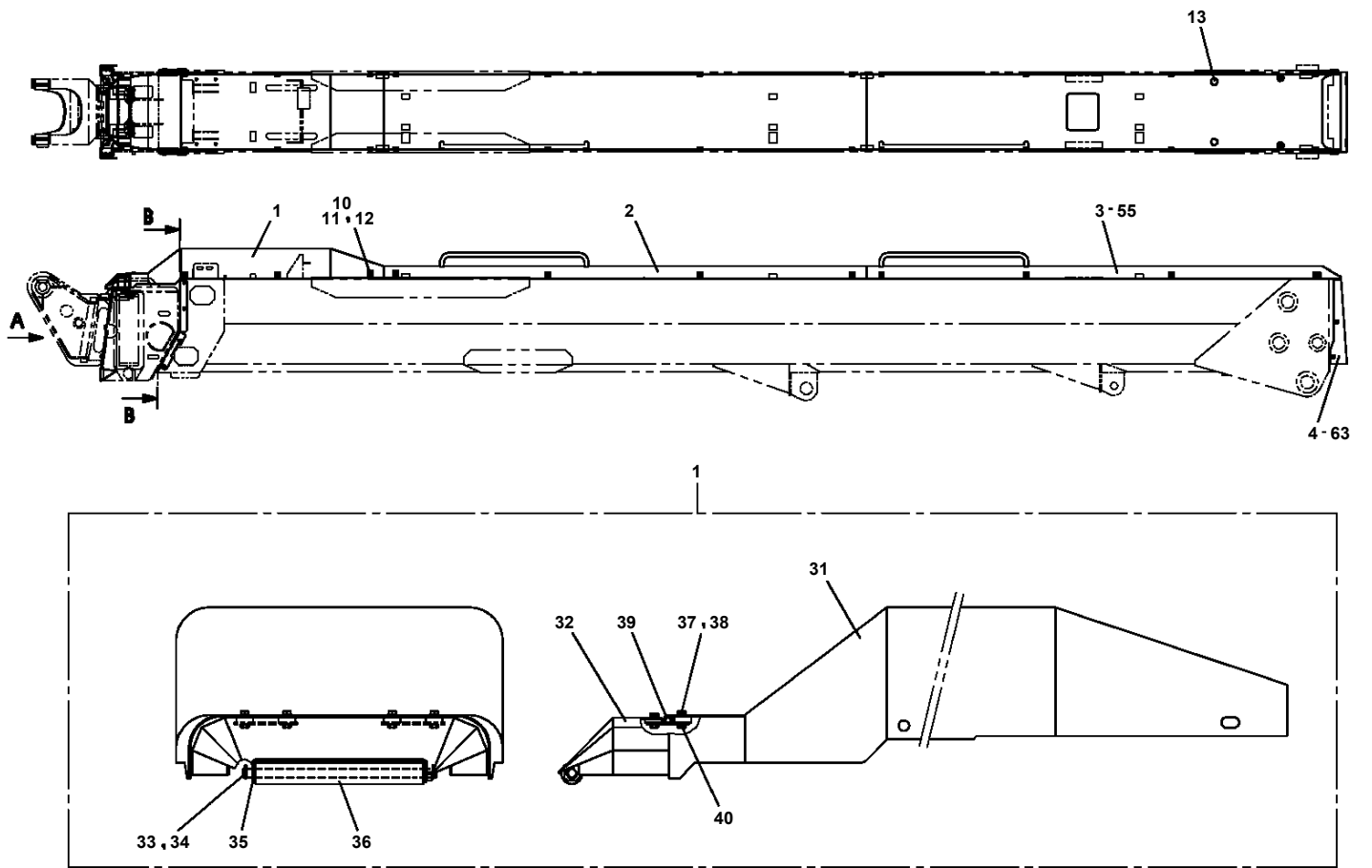
ブーム先端部
BOOM TOP
(2ND)



**AT-146-1 42095100040 UPPER
PG1220065-03 PIPING,BOOM**



AT-146-1 42095100040 UPPER
PG1410081-01 COVER,BOOM



AT-146-1 42095100040 UPPER

Pos No.	Parts No	Parts Name	Qty	Unit	Technical Data	Serial No (Start)	Serial No (End)	Remarks
1	44550527580	SWITCH,MICRO	1					
2	44550527570	COVER	1					
3	44350247560	SPRING (FOR PEDAL)	1					
4	82109901050	PEDAL	1					
5	82109905010	PACKING	1					
6	44350247580	PLATE (WITH SCREW)	1					
22	82116920408	CONNECTOR	1					
23	82122910100	CAP	1					
100	42476260000	FOOT SWITCH (OPTION)	1					

AT-146-1 42095100040 UPPER

Pos No.	Parts No	Parts Name	Qty	Unit	Technical Data	Serial No (Start)	Serial No (End)
100	42651890300	HARNESS (FOR DETECTOR,O/R LENGTH)	1				

AT-146-1 42095100040 UPPER

Pos No.	Parts No	Parts Name	Qty	Unit	Technical Data	Serial No (Start)	Serial No (End)	Remarks	Pages
100	42612853350	HARNESS	1						

AT-146-1 42095100040 UPPER

Pos No.	Parts No	Parts Name	Qty	Unit	Technical Data	Serial No (Start)	Serial No (End)	Remark
1	36663085010	SCREW	7					
2	36663085020	GEROLLER	1					
3	36663085030	SHAFT,DRIVING	1					
4	36660405050	CAP (END)	1					
5	36663065050	PLATE (SPACER)	1					
7	36660405070	BALL	2					
9	36663085040	SHAFT (OUTPUT)	1					
10	36661585020	KEY	1		8X7X31.5			
11	36660375050	RACE (BEARING)	1					
12	36660375060	BEARING,THRUST NEEDLE	1					
13	36661585030	SCREW	4					
21	36660375200	PIN,SPRING	4					
22	36660375160	PLUG (CAP)	1					
24	36663085050	SPACER	1					
41	36662755020	SEAL KIT	1					
100	36663080000	MOTOR,HYDRAULIC	1					

AT-146-1 42095100040 UPPER

Pos No.	Parts No	Parts Name	Qty	Unit	Technical Data	Serial No (Start)	Serial No (End)	Remarks	Pages
4	36606675010	PLUG	2				228585		
	36606675012	PLUG	2			228586			
5	91002902500	O-RING	4		1B G25				
6	36606675020	SPRING	2						
7	36606405070	SPACER	2						
8	80316090020	PLUG	2		KKT PT1/8				
11	36606669010	POPPET ASSY	2						
100	36606670000	VALVE,RELIEF	1						

AT-146-1 42095100040 UPPER

Pos No.	Parts No	Parts Name	Qty	Unit	Technical Data	Serial No (Start)	Serial No (End)	Remarks	Pages
11	91001101200	O-RING	2		1A P12				
23	36624110300	SEAT	2						
24	36624110400	SPRING	2						
26	36624110600	PISTON	1						
28	91001101800	O-RING	2		1A P18				
30	36624111000	PACKING	2						
31	36624111100	O-RING	1		P12				
41	36624110100	BODY	1						
42	36624110200	PLUG	2						
45	36624110501	PLUNGER	2						
100	36624110000	VALVE,CHECK	1						

AT-146-1 42095100040 UPPER

Pos No.	Parts No	Parts Name	Qty	Unit	Technical Data	Serial No (Start)	Serial No (End)	Remarks	Pa
2	90101210090	BOLT	2		M10X90				
3	90201201000	NUT	2		M10				
4	90302041001	WASHER,SPRING	2		10				
5	90303071001	WASHER,PLAIN	2		10				
6	42345722100	SUPPORT	1						
7	90101208016	BOLT	2		M8X16				
8	90303070801	WASHER,PLAIN	2		8				
9	90302040801	WASHER,SPRING	2		8				
31	80430620400	JOINT	2						
32	80430620600	JOINT (WITH O-RING)	2		L,G3/8-G3/8				
33	36625760000	VALVE,CHECK	1						000
41	91002801100	O-RING	2		1B P11				
51	91002801400	O-RING	2		1B P14				

AT-146-1 42095100040 UPPER

Pos No.	Parts No	Parts Name	Qty	Unit	Technical Data	Serial No (Start)	Serial No (End)	Remarks	Pages
1	42261172001	BUCKET (WHITE)	1						

CLICK HERE TO **DOWNLOAD** THE COMPLETE MANUAL

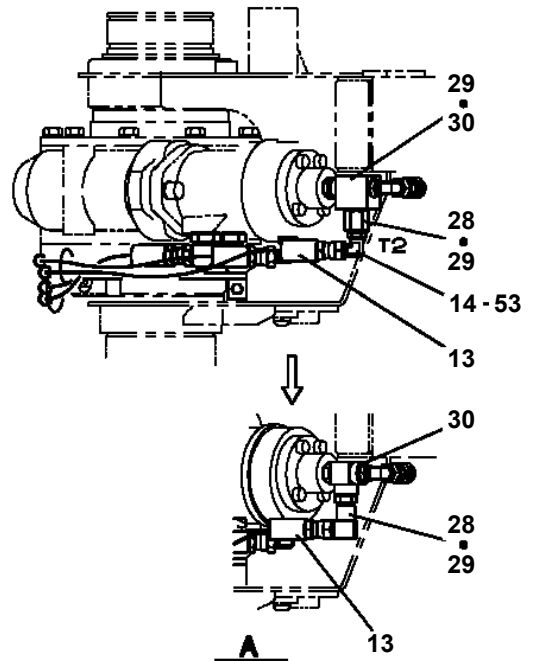
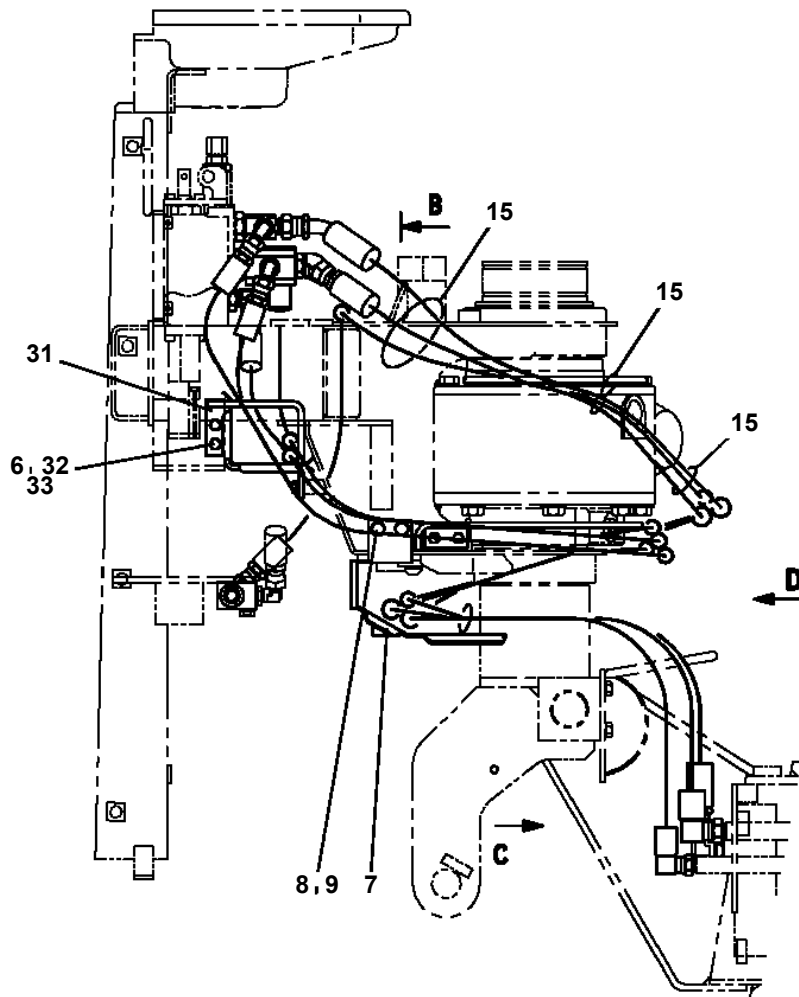
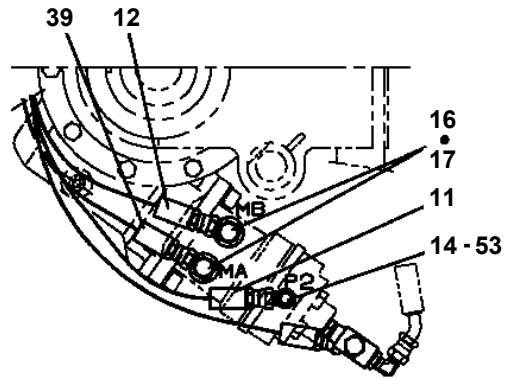
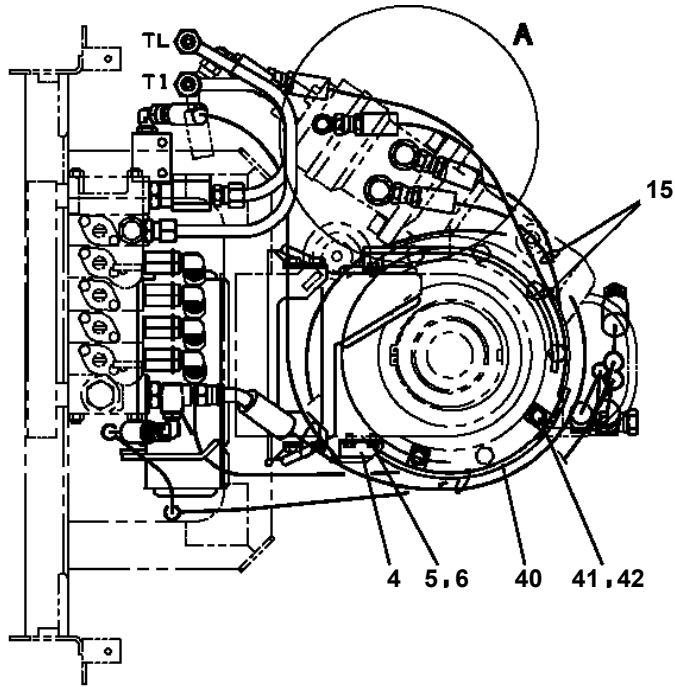
- Thank you very much for reading the preview of the manual.
- You can download the complete manual from: www.heydownloads.com by clicking the link below



- Please note: If there is no response to CLICKING the link, please download this PDF first and then click on it.

CLICK HERE TO **DOWNLOAD** THE COMPLETE MANUAL

**AT-146-1 42095100040 UPPER
PJ3110026-01 PIPING (BUCKET)**



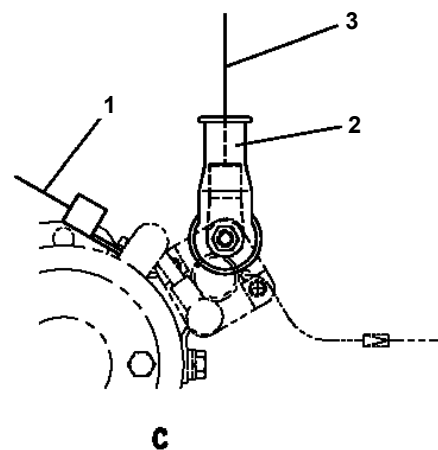
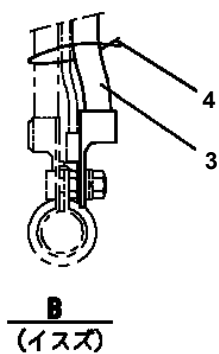
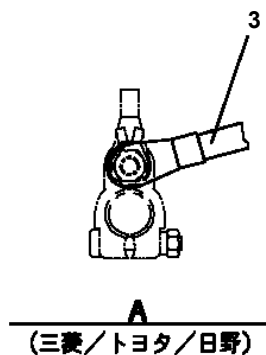
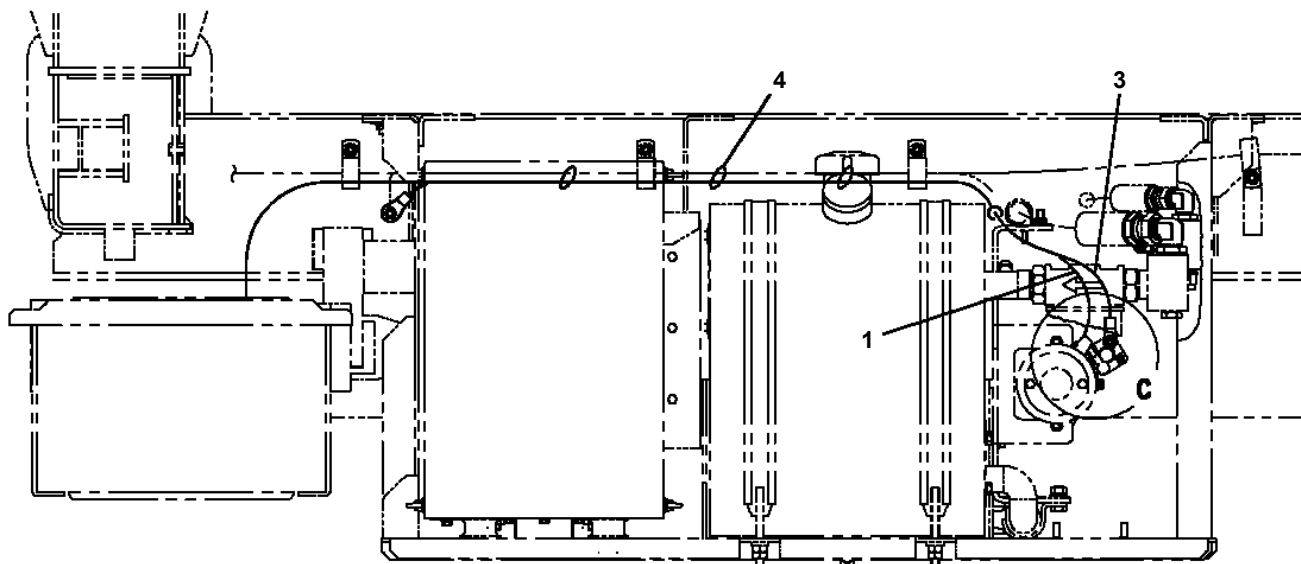
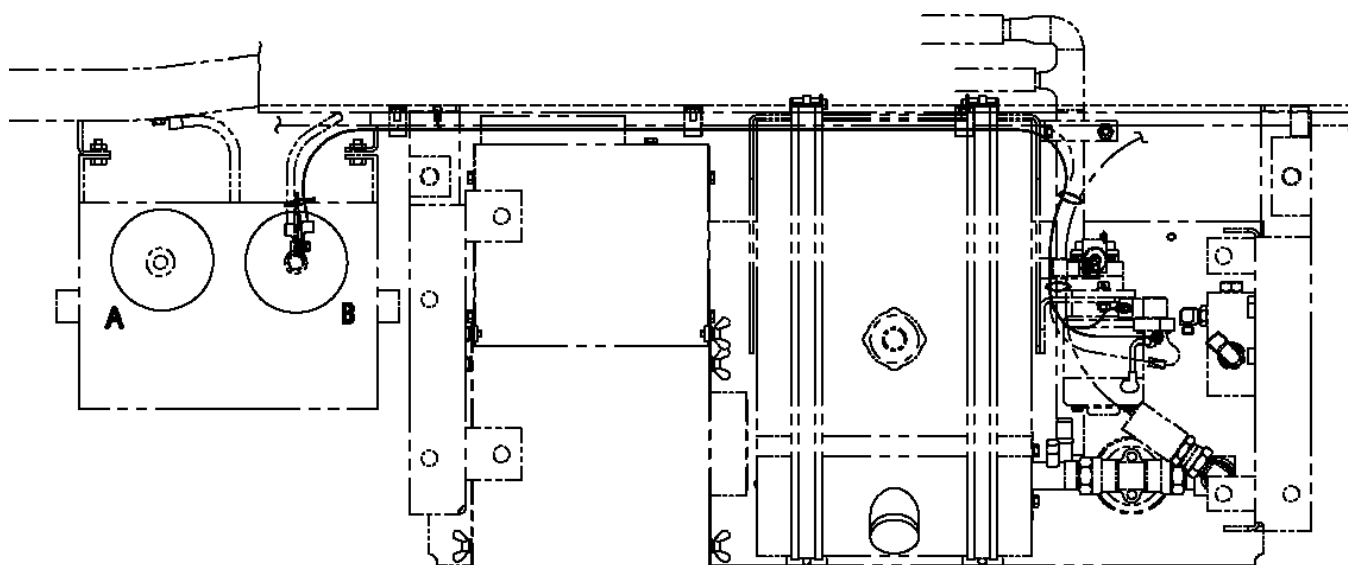
AT-146-1 42095100040 UPPER

Pos No.	Parts No	Parts Name	Qty	Unit	Technical Data	Serial No (Start)	Serial No (End)	Remarks	Pages
1	16715401000	NIPPLE	1						
2	16715403000	SLEEVE	2						
3	16715404000	NIPPLE	2						
4	16715402000	FITTING,ELBOW	1						
5	82456101000	NIPPLE,GREASE	1		A-PT1/8				
6	42311309520	PIPE ASSY	1						

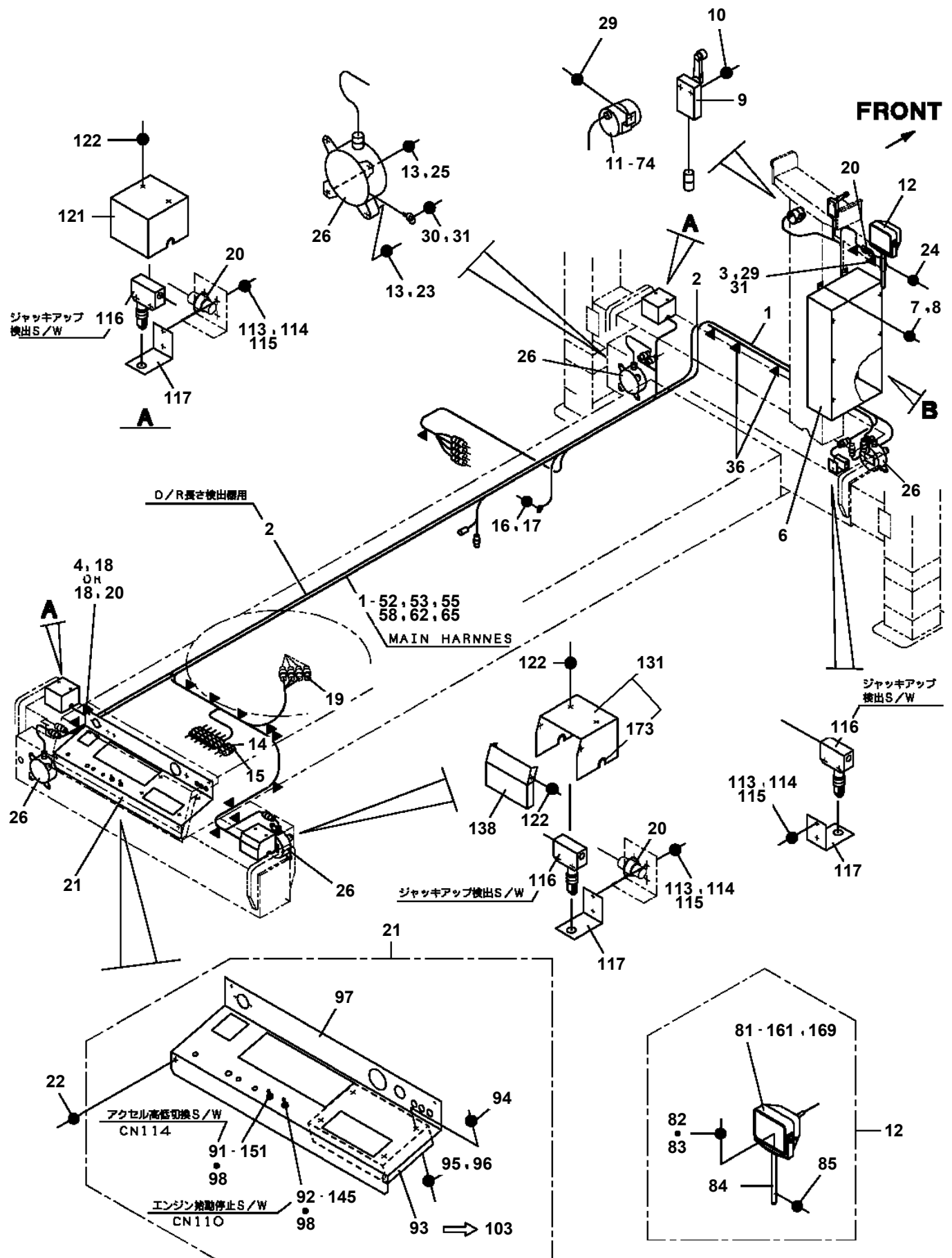
AT-146-1 42095100040 UPPER

Pos No.	Parts No	Parts Name	Qty	Unit	Technical Data	Serial No (Start)	Serial No (End)	Remarks	Pages
1	42271801000	COVER ASSY	1						000048
2	42271802000	COVER	1						
3	90101208016	BOLT	10		M8X16				
4	90302040801	WASHER,SPRING	10		8				
5	90303070801	WASHER,PLAIN	10		8				
6	90101206014	BOLT	6		M6X14				
7	90302040601	WASHER,SPRING	6		6				
8	37000512320	PLATE	6						
9	42270480020	COVER	1						
10	42270480030	COVER	1						
63	82400000311	GROMMET	1		L=1000				

**AT-146-1 42095100040 UPPER
PN1013152-00 ELEC.ASSY (EMERGENCY PUMP)**



**AT-146-1 42095100040 UPPER
PN1013288-00 ELEC.ASSY (FRAME)**



AT-146-1 4209510040 UPPER

Pos No.	Parts No	Parts Name	Qty	Unit	Technical Data	Serial No (Start)	Serial No (End)	Remarks
1	42354820200	HARNESS	1					
2	37000300720	SLEEVE	3		12-10			
3	42353340101	SUPPORT	1					
4	42352350300	HARNESS	1					
5	42353341001	TERMINAL ASSY	1					
8	90171108016	BOLT	2		M8X16			
9	90302040801	WASHER,SPRING	2		8			
11	42352350400	HARNESS	1					
12	91810130240	FASTENER	20					
13	90171110025	BOLT	4		M10X25			
14	90302041001	WASHER,SPRING	6		10			
15	90302040601	WASHER,SPRING	4		6			
16	90201200600	NUT	1		M6			
17	80172804006	SCREW,MACHINE	4		M4X6			
18	82100002002	CLAMP	2		WR6			
19	90101206012	BOLT	3		M6X12			
20	42354820300	HARNESS	1					
21	90303071001	WASHER,PLAIN	6		10			
22	90303070801	WASHER,PLAIN	2		8			
23	37000560050	PLATE	1					
24	42353342002	TERMINAL ASSY	1					
25	90172110030	BOLT,HEXAGON SOCKET	2		M10X30			
26	37000578350	PLATE	3					
27	82100002012	CLAMP	1		WR18			
41	42353341400	TERMINAL	2					
42	42353341500	SUPPORT	1					
43	80172804020	SCREW,MACHINE	4		M4X20			
44	42353341600	SUPPORT	1					
45	90172105012	BOLT,HEXAGON SOCKET	2		M5X12			
46	90302040501	WASHER,SPRING	2		5			
61	42353342400	TERMINAL	2					
62	42353342500	SUPPORT	2					
63	80136320016	PIN,SPLIT	2		2X16			
64	16311103000	SPRING	1					
65	42353342060	SCREW,SET	2		M6X35			
66	90201200600	NUT	2		M6			
67	90303521401	WASHER,PLAIN	4		14			
68	42353342100	BOLT	2					
69	42353342601	SUPPORT	1					
70	80801001415	BEARING,PLAIN	2					
71	90720005160	SCREW,SET	2		M5X16			
72	90201200500	NUT	2		M5			
73	80820001010	BEARING,PLAIN	2					
74	80801001010	BEARING,PLAIN	2					

AT-146-1 42095100040 UPPER

Pos No.	Parts No	Parts Name	Qty	Unit	Technical Data	Serial No (Start)	Serial No (End)	Remarks	Pages
1	42473740011	HARNESS	1						000089
2	91810130240	FASTENER	5						
3	42475560010	PLATE,NAME	1						
4	42473740030	LAMP ASSY	1						
5	82100002051	CLAMP	1		WS-A55				
6	80162305020	SCREW,MACHINE	2		M5X20				
7	90302040501	WASHER,SPRING	2		5				
8	90303070501	WASHER,PLAIN	2		5				
9	90201200500	NUT	2		M5				
31	82100002538	LAMP	1						

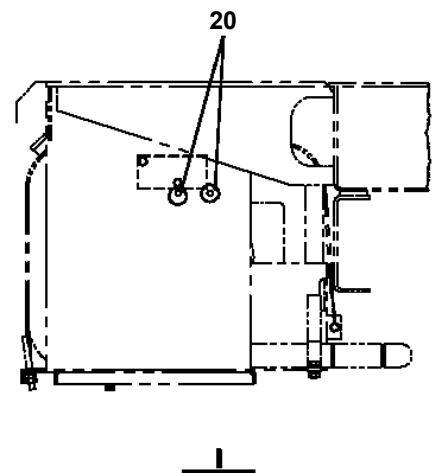
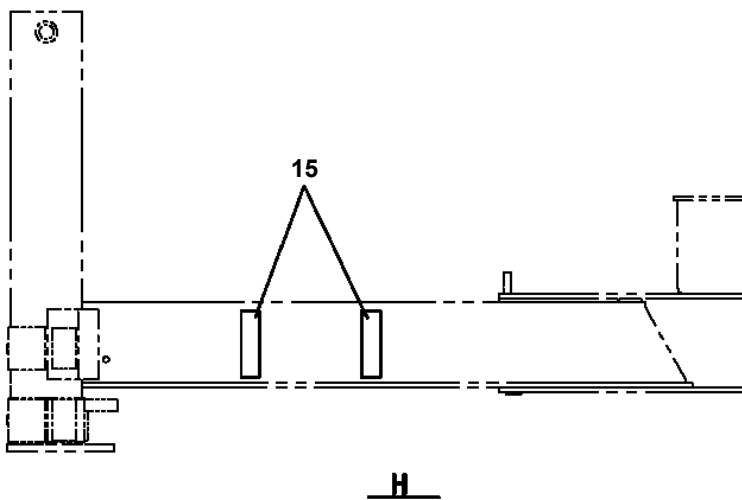
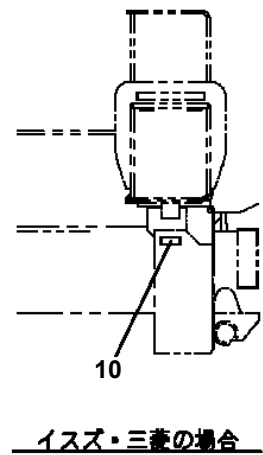
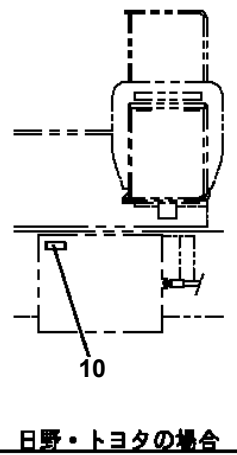
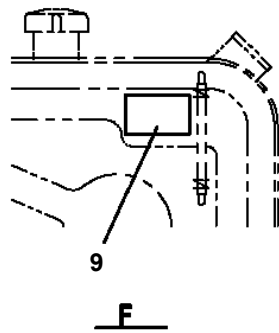
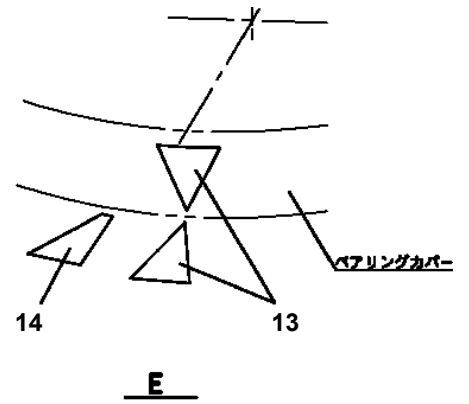
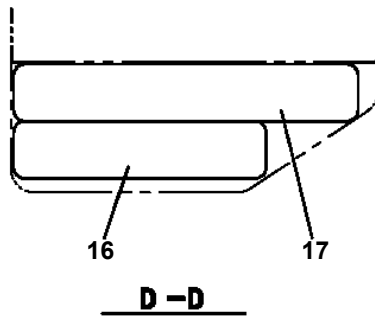
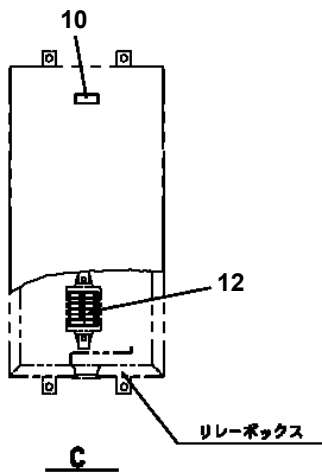
AT-146-1 42095100040 UPPER

Pos No.	Parts No	Parts Name	Qty	Unit	Technical Data	Serial No (Start)	Serial No (End)	Rema
2	42354611160	BOARD,CIRCUIT	1					
3	42354617510	COVER	1					
4	42354617520	CASE	1					
5	42354617550	COVER ASSY (BOTTOM)	1					
6	42354617530	PACKING	1					
7	42354617540	PACKING	1					
21	42354617560	BOARD,CIRCUIT (WITH DATA)	1					
100	42354611000	TRANSMITTER,SIGNAL	1					

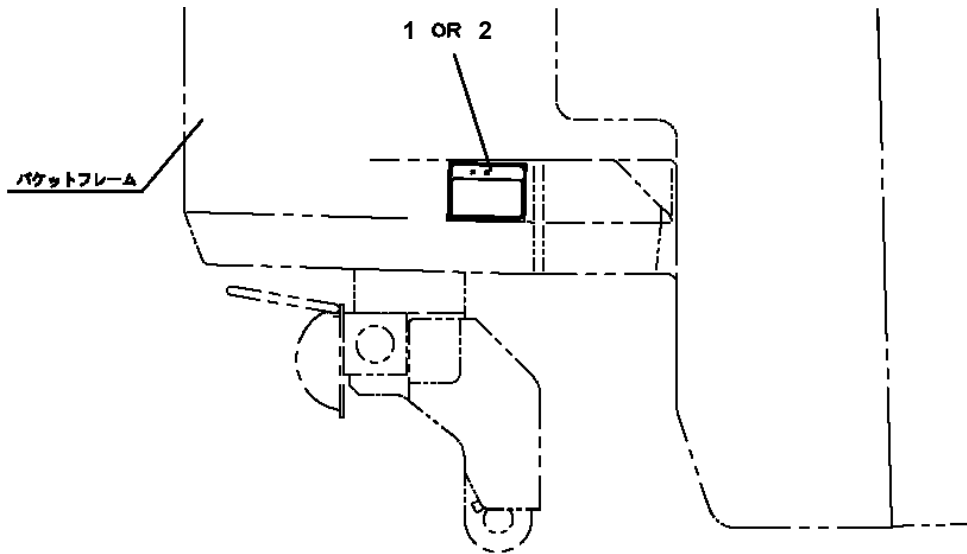
AT-146-1 42095100040 UPPER

Pos No.	Parts No	Parts Name	Qty	Unit	Technical Data	Serial No (Start)	Serial No (End)	Remarks	Pages
1	42391413080	PLATE,NAME	2						
2	42311305510	PLATE,NAME	2						
3	42392583120	PLATE,NAME	1						
4	42392583130	PLATE,CAUTION	1						
5	42311305520	PLATE,NAME	1						
6	42311305530	PLATE,CAUTION	1						
8	42311405010	PLATE,NAME	1						
9	42311305560	PLATE,CAUTION	1						
10	42392350070	PLATE,CAUTION	1						
11	42311305580	PLATE,CAUTION	1						
12	42311895060	REFLECTOR	1						
13	42311895060	REFLECTOR	1						
14	42311895090	REFLECTOR	1						

AT-146-1 42095100040 UPPER
 PO1013848-00 PLATE ASSY,NAME



AT-146-1 42095100040 UPPER
PO1015621-00 PLATE ASSY,NAME (BUCKET/GREASE)



1

グリス給脂方法

バケット（アーム）スイング部のグリス給脂は、スイング作動させ、異なる位置（取付所）から給脂してください。

2

グリス給脂

バケットスイング部プレーンベアリング上面と止め輪の間にグリスを塗布（充填）すること。

AT-146-1 42095100040 UPPER

Pos No.	Parts No	Parts Name	Qty	Unit	Technical Data	Serial No (Start)	Serial No (End)
90	36648355460	FILTER ASSY (WITH HOLDER,O-RING)	1				
100	36641430000	VALVE,REMOTE CONTROL	1				

AT-146-1 42095100040 UPPER

Pos No.	Parts No	Parts Name	Qty	Unit	Technical Data	Serial No (Start)	Serial No (End)	Remarks	Page
5	50815054503	PACKING	2						
6	36624970600	SPRING	2						
7	91002801800	O-RING	2		1B P18				
8	50815054703	PIN (STOP)	2						
9	36623835900	PLUG	2						
10	36624971100	SPACER	2						
100	36625000000	VALVE ASSY,CHECK	1						

AT-146-1 42095100040 UPPER

Pos No.	Parts No	Parts Name	Qty	Unit	Technical Data	Serial No (Start)	Serial No (End)	R
1	42470180000	CLAMP HEAD (IZUMI 12TON 2.5M)	1					

AT-146-1 42095100040 UPPER

Pos No.	Parts No	Parts Name	Qty	Unit	Technical Data	Serial No (Start)	Serial No (End)
1	42471070000	CLAMP HEAD (O.D.K 10TON ELECTRIC)	1				

AT-146-1 4209510040 UPPER

Pos No.	Parts No	Parts Name	Qty	Unit	Technical Data	Serial No (Start)	Serial
1	42473857510	SCREW	4				
2	42473857515	SPRING	4				
3	80560053000	BALL,STEEL	4		1/8		
4	42470027510	HEAD (SCM)	1				
5	42473857530	SPRING	1				
6	42473857535	PIN	1				
7	42470027520	COLLAR	1				
8	42473857545	SPRING	1				
9	42473857550	PISTON	1				
10	91411003500	RING,BACKUP	1				
11	91001103500	O-RING	1		1A P35		
12	42470027530	CYLINDER	1				
13	42473857570	HOLDER	1				
14	42473857575	CAP	1				
15	91001101400	O-RING	1		1A P14		
16	42473857580	CAP	1				
17	42473857590	COVER	1				
18	42473857595	BUTTON (PUSH)	1				
19	42473857600	SPRING	1				
20	42473857605	SWITCH	1				
21	42473857610	HOLDER (SWITCH)	1				
22	42473857615	SCREW	1				
24	42473857620	BINDER	4				
25	42473857625	TUBE	1				
26	42473857630	TUBE	1				
27	42473857635	TUBE	1				
28	42473857640	BINDER	6				
29	42473857645	HOSE	1				
30	42473857650	JOINT	1				
31	42473857655	CABLE	1				
32	42473857660	PLUG (SANWA)	1				
38	80136320010	PIN,SPLIT	1		2X10		
39	42473857675	SEPARATOR	1				
61	42473857670	PROTECTOR ASSY	1				
62	42473857690	CLAMP ASSY	1				
100	42470021000	CLAMP HEAD (IZUMI 8TON,2.5M/YONDENKOU)	1				

AT-146-1 42095100040 UPPER

Pos No.	Parts No	Parts Name	Qty	Unit	Technical Data	Serial No (Start)	Serial No (End)
1	42470330000	ROPE (SAFETY,YELLOW:TD-TYPE)	1				

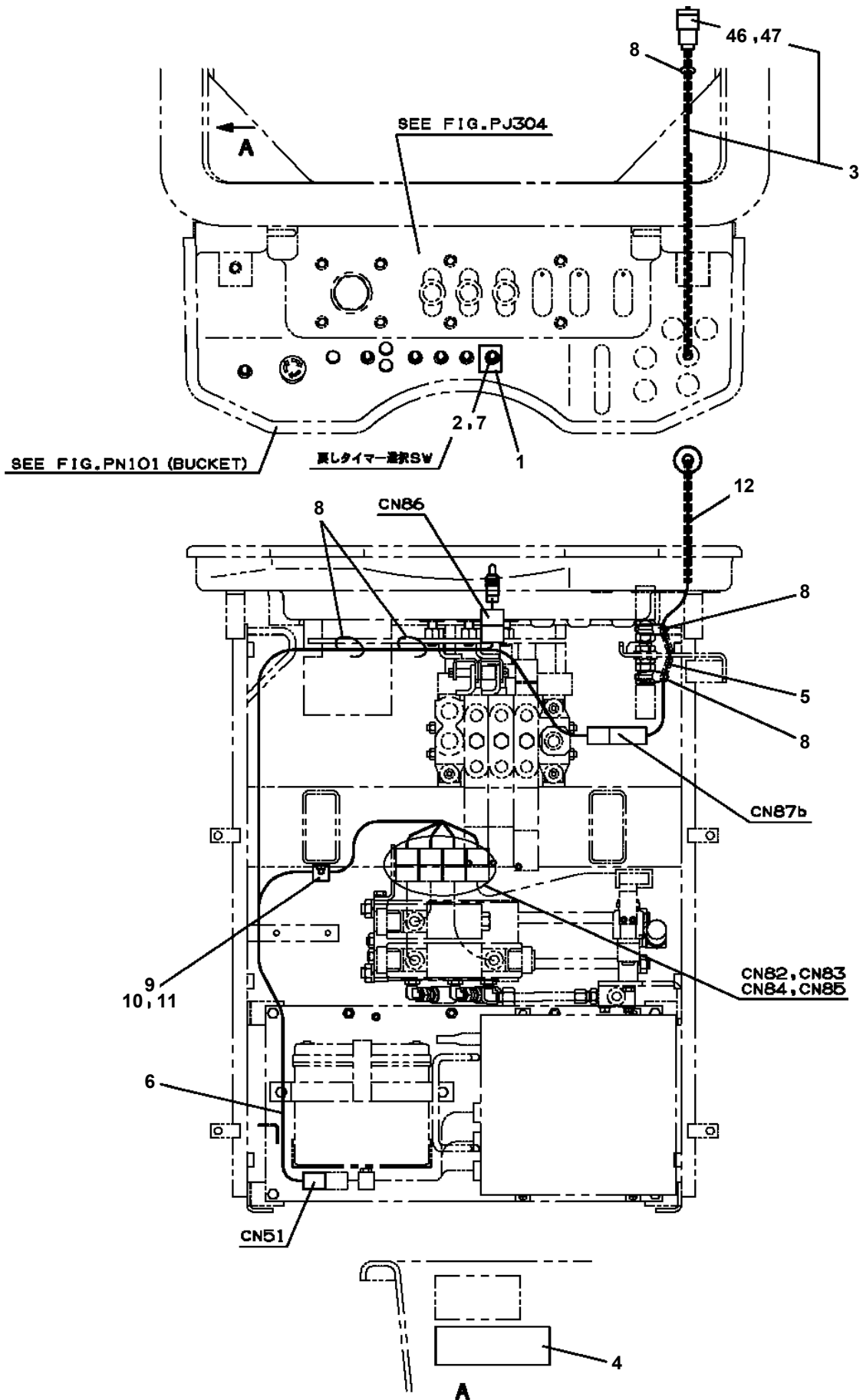
AT-146-1 42095100040 UPPER

Pos No.	Parts No	Parts Name	Qty	Unit	Technical Data	Serial No (Start)	Serial No (End)	Remarks	Pages
1	42470121000	ARM ASSY	1						
2	42470122000	HOLDER	3						
3	42470123000	CLAMP ASSY	1						
4	42470044000	HOT STICK	1						
5	42470045000	SUPPORT	1						
6	90101216130	BOLT	1		M16X130				
7	90303071601	WASHER,PLAIN	2		16				
8	90201201600	NUT	2		M16				
9	42220011200	SUPPORT	1						
21	42470121100	ARM	1						
22	42470121200	CAP	2						

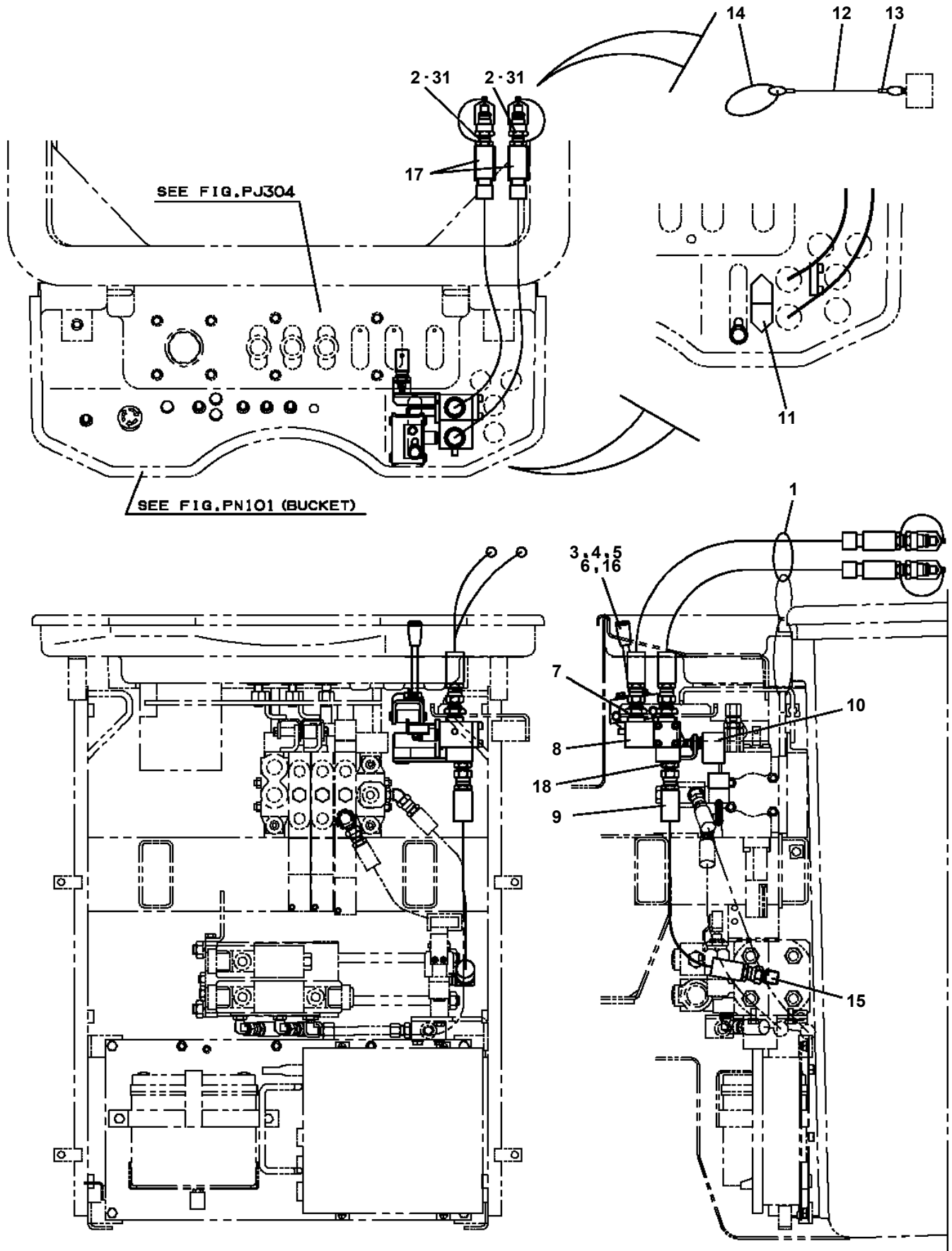
AT-146-1 42095100040 UPPER

Pos No.	Parts No	Parts Name	Qty	Unit	Technical Data	Serial No (Start)	Serial No (End)	Remarks	Pages
1	42470121000	ARM ASSY	1						
2	42470421000	HOLDER	3						
3	42470123000	CLAMP ASSY	1						
4	42470044000	HOT STICK	1						
5	42475751001	SUPPORT	1						
6	90101216140	BOLT	1		M16X140				
7	90303071601	WASHER,PLAIN	2		16				
8	90201201600	NUT	2		M16				
9	42220011200	SUPPORT	1						
21	42470121100	ARM	1						
22	42470121200	CAP	2						

**AT-146-1 42095100040 UPPER
PY1160093-02 BOOSTER (WIRING/ELECTRIC)**



**AT-146-1 42095100040 UPPER
PY1160098-02 BOOSTER (PIPING/AIR&ELEC.SELECT.)**



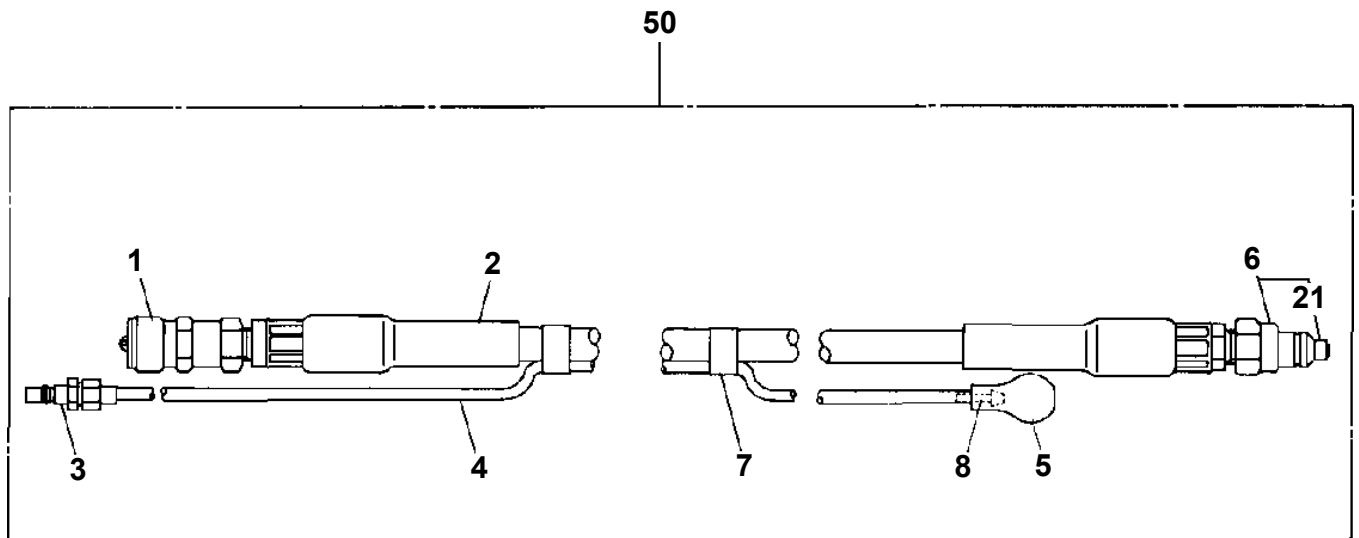
**AT-146-1 42095100040 UPPER
PY1160156-00 BOOSTER (ELEC.,SANWA)**

1	フースタ BOOSTER
2	フースタ (ハイセン) BOOSTER (ELEC.)
3	フースタ (ハイカン) BOOSTER (PIPING)

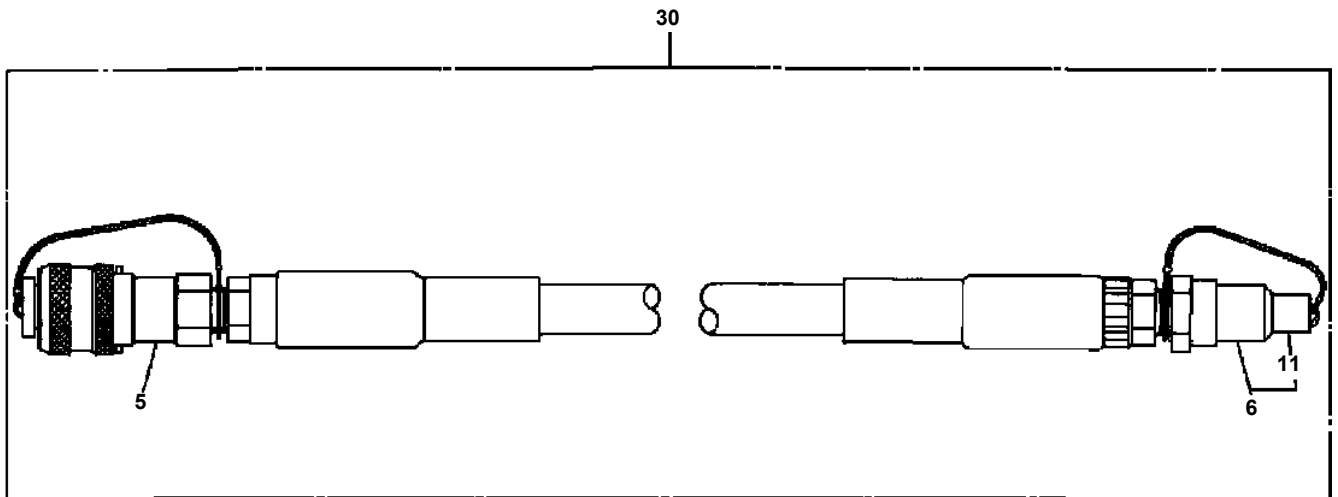
**AT-146-1 42095100040 UPPER
PY1500034-00 SELECTOR,BOOSTER (ELEC.,SANWA)**

1	フースタ BOOSTER
2	フースタ (ハイセン) BOOSTER (ELEC.)
3	フースタ (ハイカン) BOOSTER (PIPING)

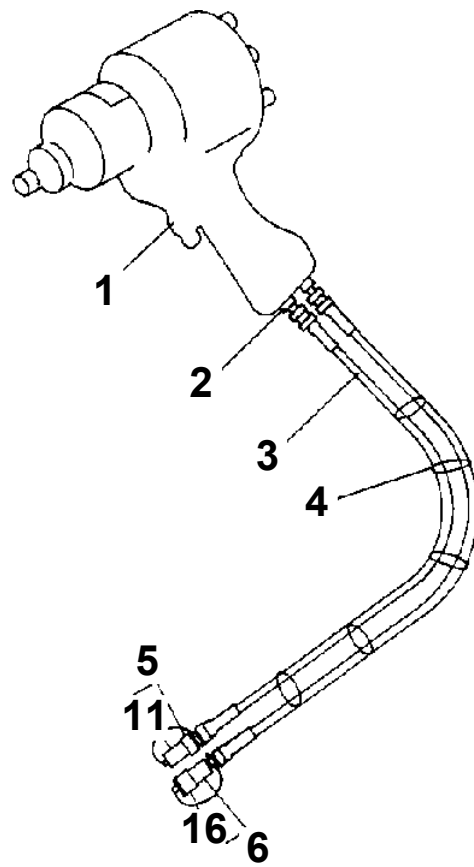
**AT-146-1 42095100040 UPPER
PY1590000-02 HOSE,BOOSTER (WITH AIR BALLOON)**



**AT-146-1 42095100040 UPPER
PY1590008-00 HOSE,BOOSTER (MALE-FEMALE,5M)**



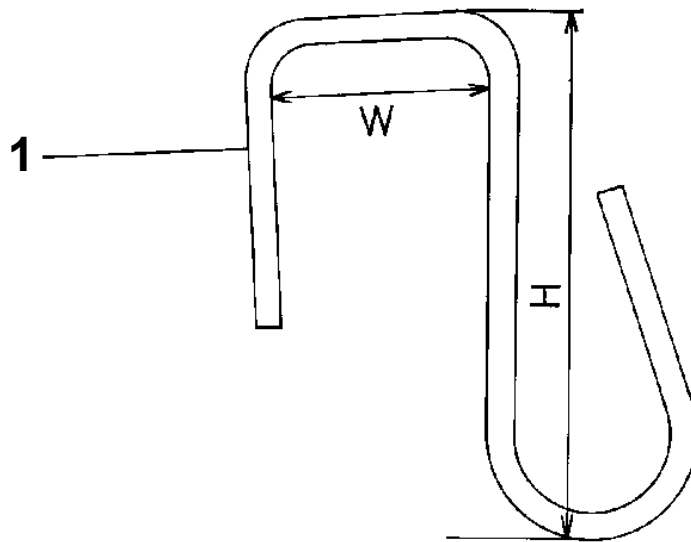
**AT-146-1 42095100040 UPPER
PY1680000-02 WRENCH,IMPACT (HYDRAULIC)**



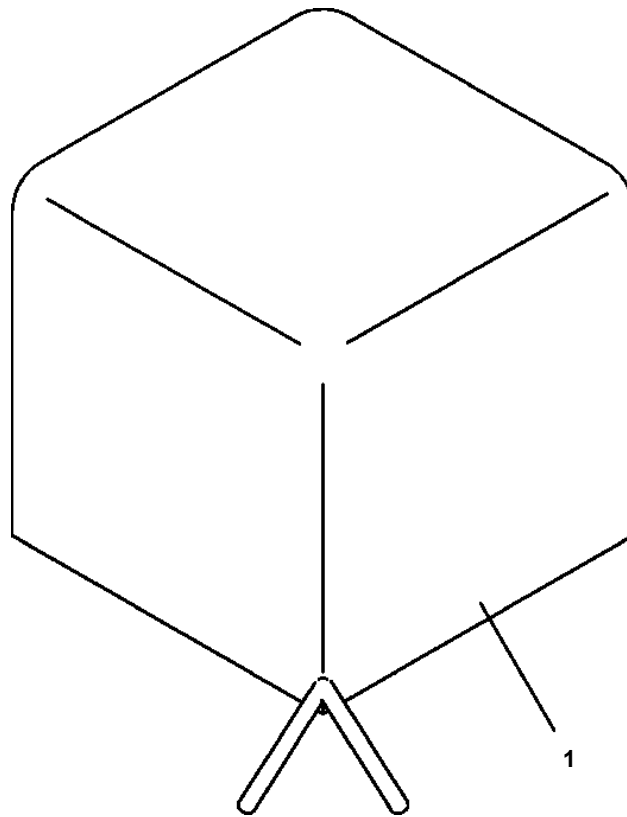
**AT-146-1 42095100040 UPPER
PY1790001-00 HANGER (FOR BUCKET)**

Assembly Name HANGER

1117 0001 00



**AT-146-1 42095100040 UPPER
PY2130001-00 COVER,LAMP (WORKING)**



CLICK HERE TO **DOWNLOAD** THE COMPLETE MANUAL

- Thank you very much for reading the preview of the manual.
- You can download the complete manual from: www.heydownloads.com by clicking the link below



- Please note: If there is no response to CLICKING the link, please download this PDF first and then click on it.

CLICK HERE TO **DOWNLOAD** THE COMPLETE MANUAL