

AT-146-1 42095100032 UPPER

**PD2000046-00 SWING UNIT
PF1000469-00 WINCH SYSTEM
PG2000059-00 BOOM UNIT
PH1000399-00 SAFETY DEVICES
PJ3000233-00 BUCKET SYSTEM
PJ5000003-00 BOOSTER UNIT
PK2000230-00 FRAME UNIT
PO1000131-03 INDICATION PLATES
PY1000667-03 OPTIONS,1
PY2000026-00 OPTIONS,2
ASSEMBLY**

CLICK HERE TO **DOWNLOAD** THE COMPLETE MANUAL

- Thank you very much for reading the preview of the manual.
- You can download the complete manual from: www.heydownloads.com by clicking the link below



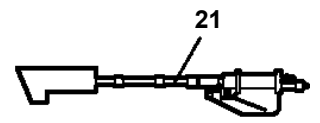
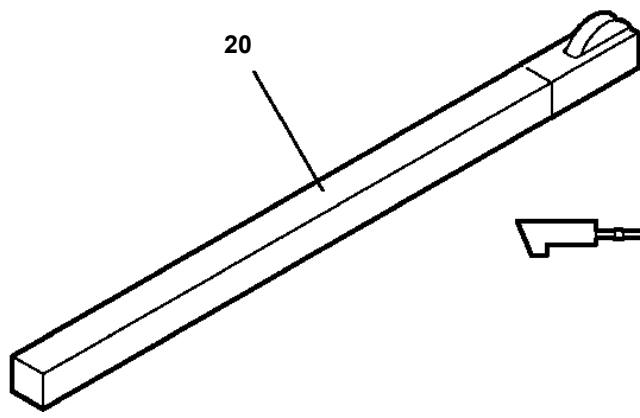
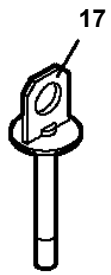
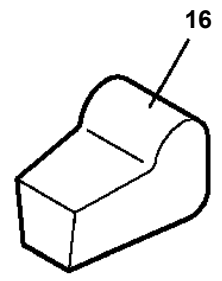
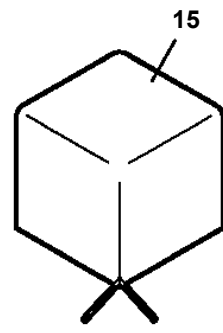
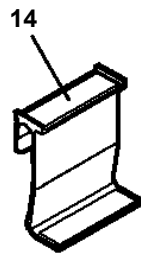
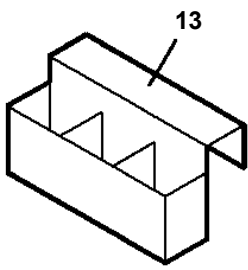
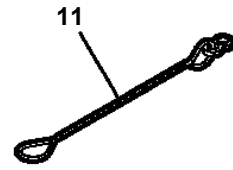
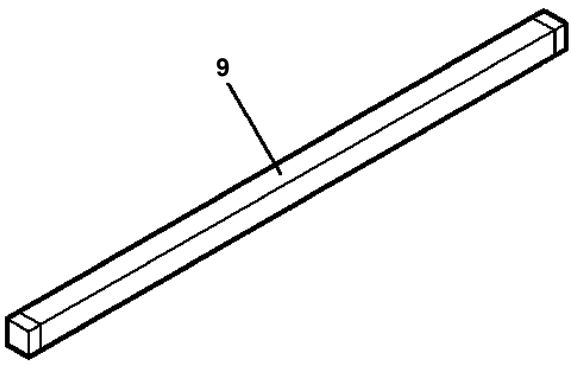
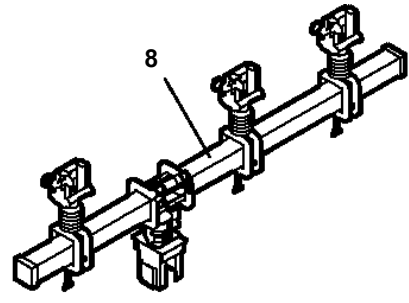
- Please note: If there is no response to CLICKING the link, please download this PDF first and then click on it.

CLICK HERE TO **DOWNLOAD** THE COMPLETE MANUAL

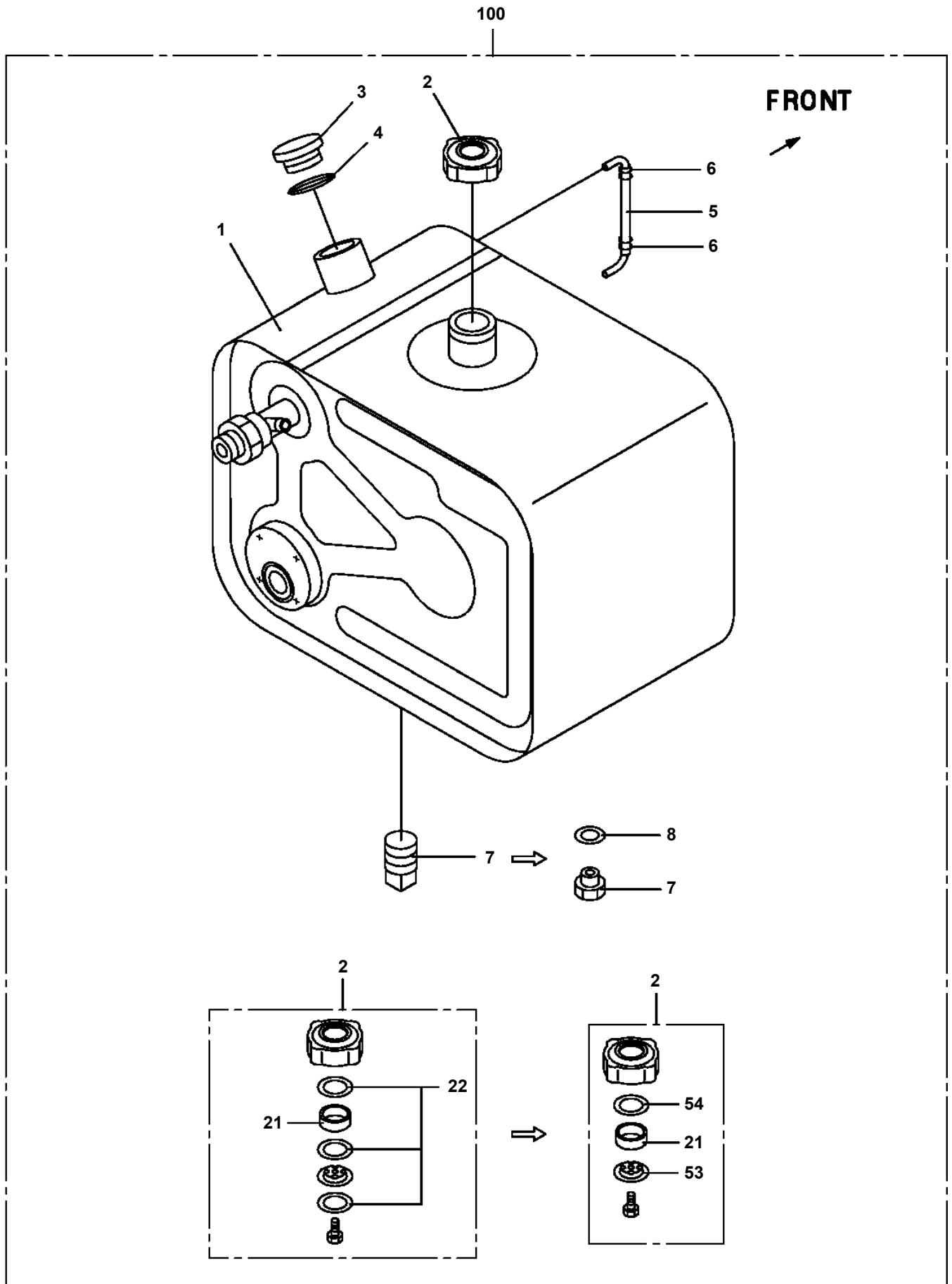
AT-146-1 42095100032 UPPER

Pos No.	Parts No	Parts Name	Qty	Unit	Technical Data	Serial No (Start)	Serial No (End)
1	(*****)	FRAME	1				
2	(*****)	PIPING (BUCKET)	1				
3	(*****)	ELEC.ASSY (BUCKET)	1				
4	(*****)	OPE.ASSY	1				
5	(*****)	PIPING,GREASE (BUCKET)	1				
11	(*****)	BUCKET (WHITE)	1				
12	(*****)	BUCKET (INNER CASE)	1				
13	(*****)	COVER (FRP,WHITE)	1				
14	(*****)	COVER,BOOM (TOP/FRP,WHITE)	1				
15	42264912000	COVER (CLOTH,WHITE)	1				
16	(*****)	ACCESSORIES (BUCKET INNER MAT)	1				

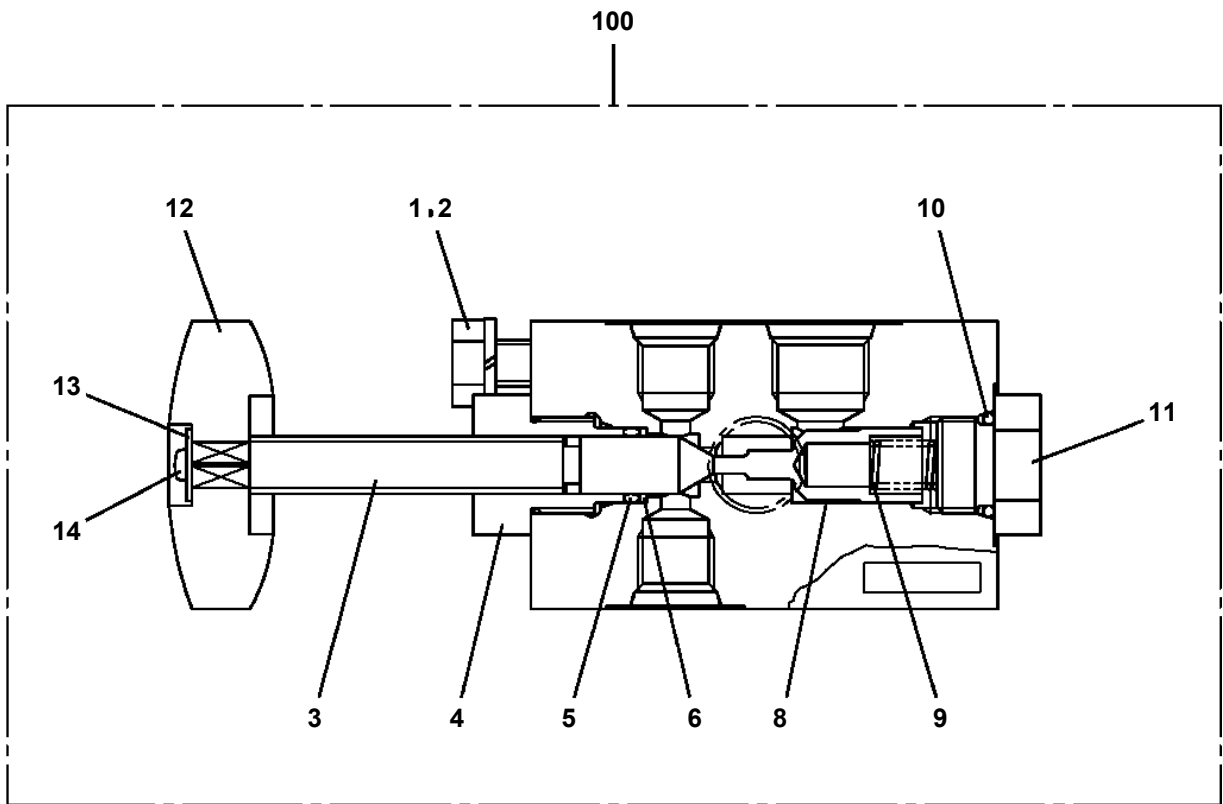
AT-146-1 42095100032 UPPER
PY2000026-00 OPTIONS,2



AT-146-1 42095100032 UPPER
PB1130209-02 TANK,OIL

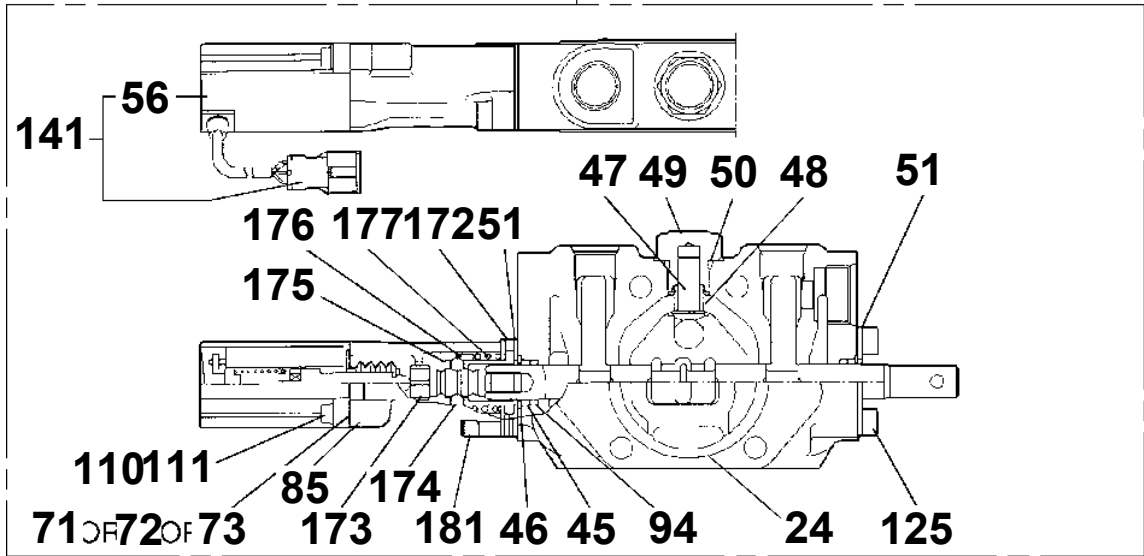


**AT-146-1 42095100032 UPPER
PB1320319-00 VALVE,MANUAL CONTROL**

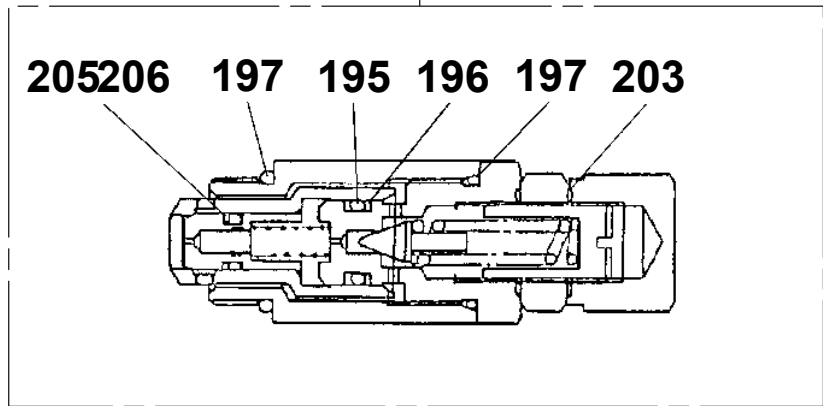


**AT-146-1 42095100032 UPPER
PB1320574-00 VALVE,MANUAL CONTROL**

8



9



AT-146-1 4209510032 UPPER

Pos No.	Parts No	Parts Name	Qty	Unit	Technical Data	Serial No (Start)	Serial No (End)	Remarks
1	42881631000	SUPPORT	1					
2	36102590000	TANK,OIL	1					
3	42880550100	BAND	2					
4	56560009000	PIN	2					
5	80136330025	PIN,SPLIT	2					
6	90303071201	WASHER,PLAIN	2		12			
7	90301021001	WASHER	2					
8	90201201000	NUT	5		M10			
10	91001204500	O-RING	1		1A G45			
11	91002802900	O-RING	2		1B P29			
12	90101208016	BOLT	8		M8X16			
13	90302040801	WASHER,SPRING	8		8			
14	36672280000	FILTER,OIL (YAMASHIN)	1					
15	42881740100	FITTING,FLANGE	1					
16	90280200800	NUT,FLANGE	4		M8			
17	37000547660	PLATE	4		T=2.3			
19	42881490100	JOINT	1					
20	90302041001	WASHER,SPRING	1		10			
21	90303071001	WASHER,PLAIN	1		10			
22	90101210025	BOLT	1		M10X25			
23	37000600520	CLAMP	1		R=22			
24	42881630020	SUPPORT	1					
25	37000542310	PLATE	1					
26	90303070801	WASHER,PLAIN	2		8			
27	80430621200	JOINT	1					
28	80316070060	PLUG	1		PF3/8			
29	91002801400	O-RING	2		1B P14			
30	37002454690	HOSE	1		L=390			
31	37002504550	HOSE	1		L=250			
32	91803600350	CLIP	4		D=25-35			
33	80430620400	JOINT	1					
34	42643050300	JOINT	1					
51	42881632100	JOINT	1					
52	42643051000	SWITCH ASSY (THERMO)	1					
53	36625130000	VALVE,CHECK	1					
54	91002801800	O-RING	5		1B P18			
55	80316070080	PLUG	2		PF1/2			
56	80481103020	JOINT	1		PF3/8-PF1/4			
58	80430620800	JOINT	1					
71	91002802400	O-RING	1		1B P24			
81	91002801100	O-RING	1		1B P11			
91	82109902020	SWITCH,THERMO	1					

AT-146-1 4209510032 UPPER

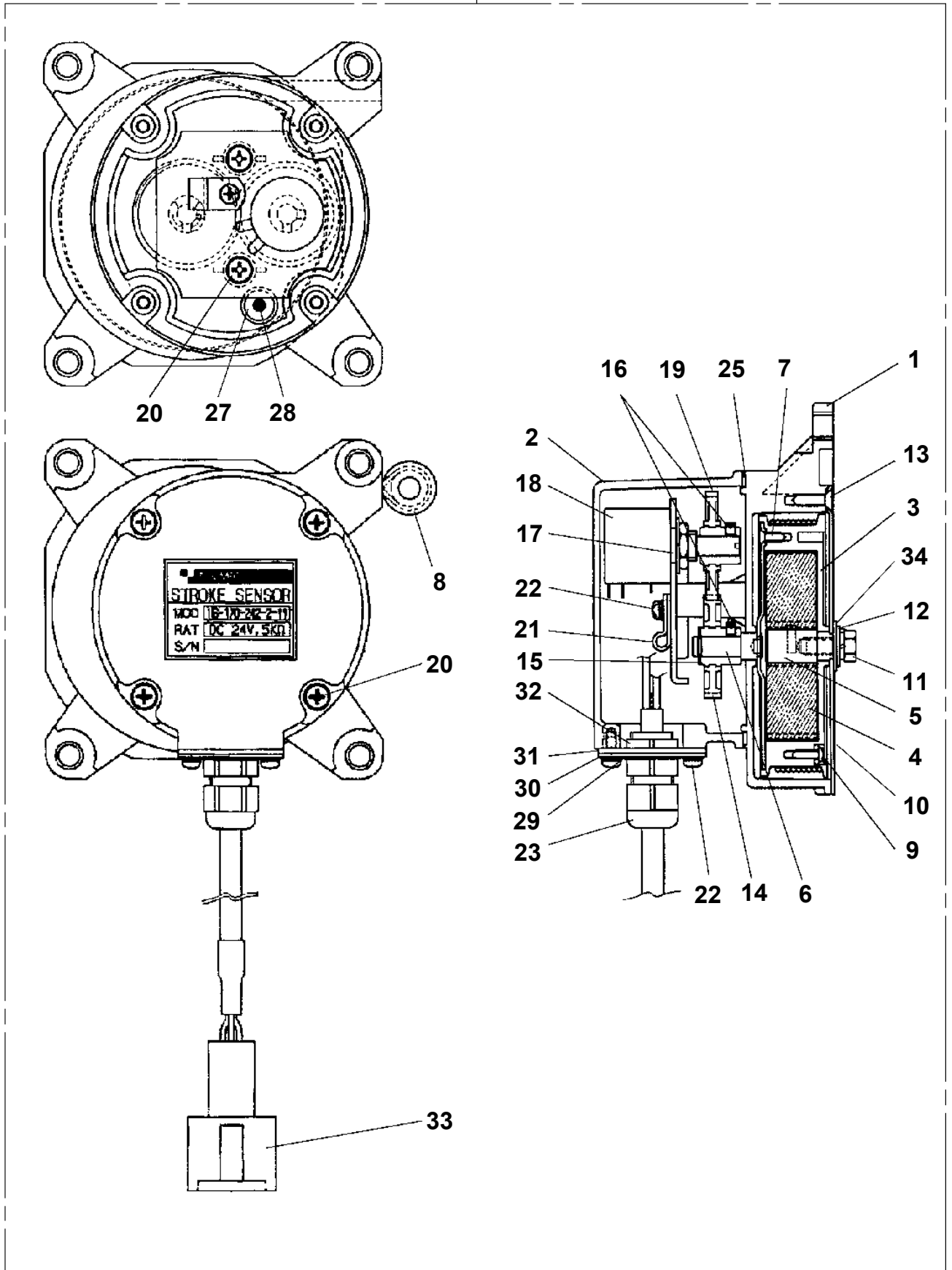
Pos No.	Parts No	Parts Name	Qty	Unit	Technical Data	Serial No (Start)	Serial No (End)	R
1	42613361100	CASE,INNER	1					
2	42613351200	CASE,INNER (JACK)	1					
4	36035100000	CYLINDER,JACK	1					
5	42613351400	FLOAT ASSY	1					
6	37000171720	PIN	1					
7	80601110250	RING,RITAINING	2		S25			
8	37000169010	PIN	1		30			
9	80601110300	RING,RITAINING	2		S30			
10	36625740001	VALVE,CHECK	1					
11	90171108055	BOLT	4		M8X55			
12	37000138750	PIN	1		18			
13	80136332036	PIN,SPLIT	2		3.2X36			
14	80400160127	JOINT	1					
15	91002801100	O-RING	1		1B P11			
16	36672460000	FILTER (NIPPLE TYPE)	1					
17	42612851010	COVER	1					
18	90186206014	BOLT,FLANGE	2		M6X14			
19	37000112320	PIN	1					
20	80601110120	RING,RITAINING	2		S12			
21	91810130240	FASTENER	2					
22	31201770100	PLATE,SLIDE	9		T=3.0			
	31201770100	PLATE,SLIDE	8		T=3.0	228160		228159
23	90280200600	NUT,FLANGE	1		M6			
24	37000600700	CLAMP	1		12X3			
25	42614471010	PLATE,SLIDE	1		T=2.0	228160		
41	36042820000	CYLINDER,EXTENSION (REAR)	1					
42	80400160127	JOINT	2					
43	91002801100	O-RING	3		1B P11			
44	37002474980	HOSE	1		L=2075			
45	42612861350	HARNESS	1					
	42614061350	HARNESS	1			228540		228539
46	91810130240	FASTENER	13					
51	42612851420	TRUNNION	1					
100	42613361001	OUTRIGGER (REAR/INNER CASE)	1					

AT-146-1 4209510032 UPPER

Pos No.	Parts No	Parts Name	Qty	Unit	Technical Data	Serial No (Start)	Serial No (End)	Rem
1	90209201800	NUT	1		M18			
2	91684004500	PACKING	2					
3	91002802000	O-RING	1		1B P20			
4	36042810400	PISTON	1					
5	36042810200	ROD	1					
6	36042821000	CYLINDER	1					
7	36042810300	COVER,ROD	1					
8	91002904000	O-RING	1		1B G40			
9	91694003000	PACKING	1					
10	91660003001	SEAL,DUST	1					
11	90302041801	WASHER,SPRING	1		18			
12	90303071801	WASHER,PLAIN	1		18			
13	91002904500	O-RING	1		1B G45			
14	91411203501	RING,BACKUP	2					
30	36042819900	PACKING SET	1		30X45			
100	36042820000	CYLINDER,EXTENSION (REAR)	1					

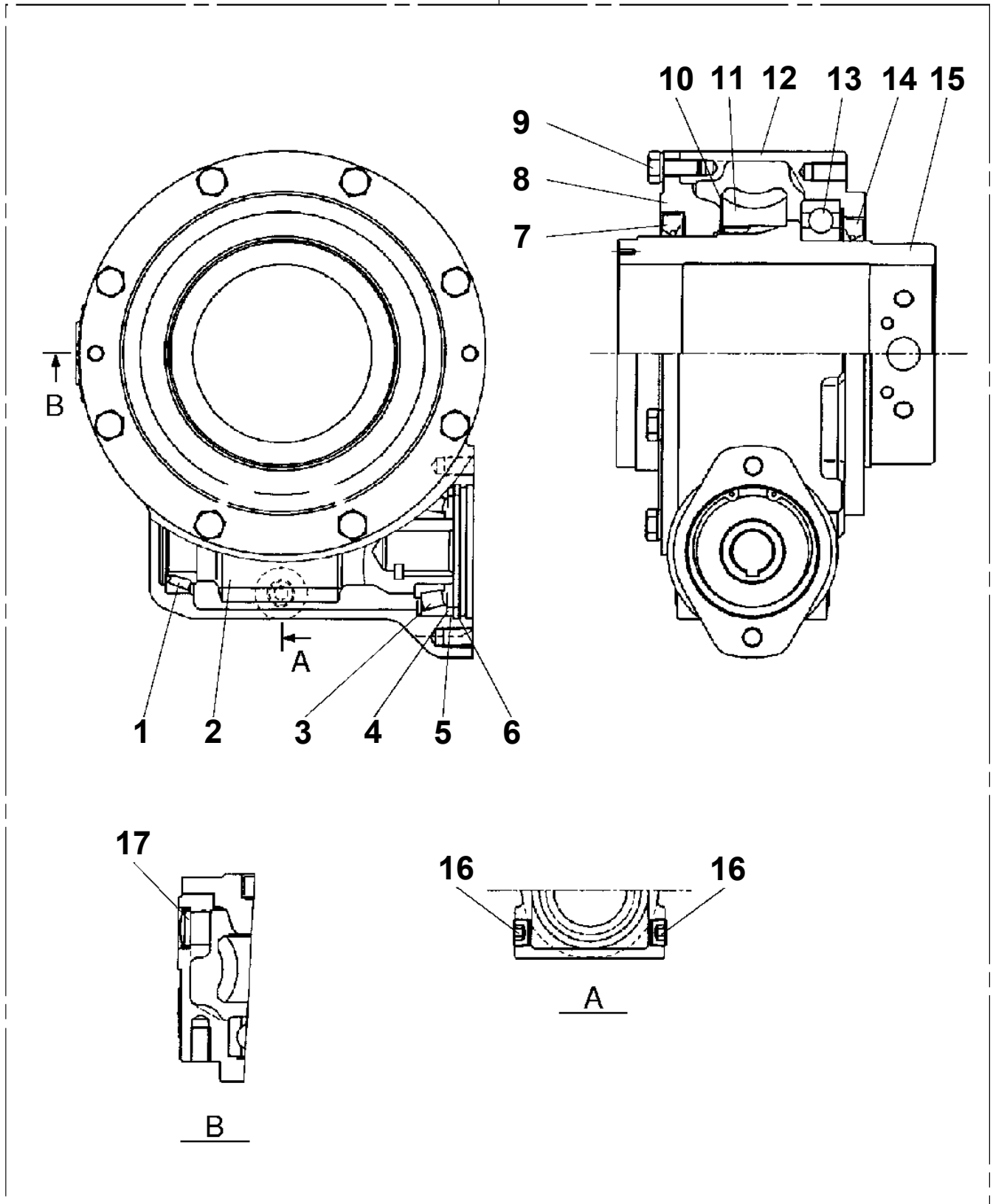
AT-146-1 42095100032 UPPER
PC1380011-00 DETECTOR,OUTRIGGER LENGTH

100



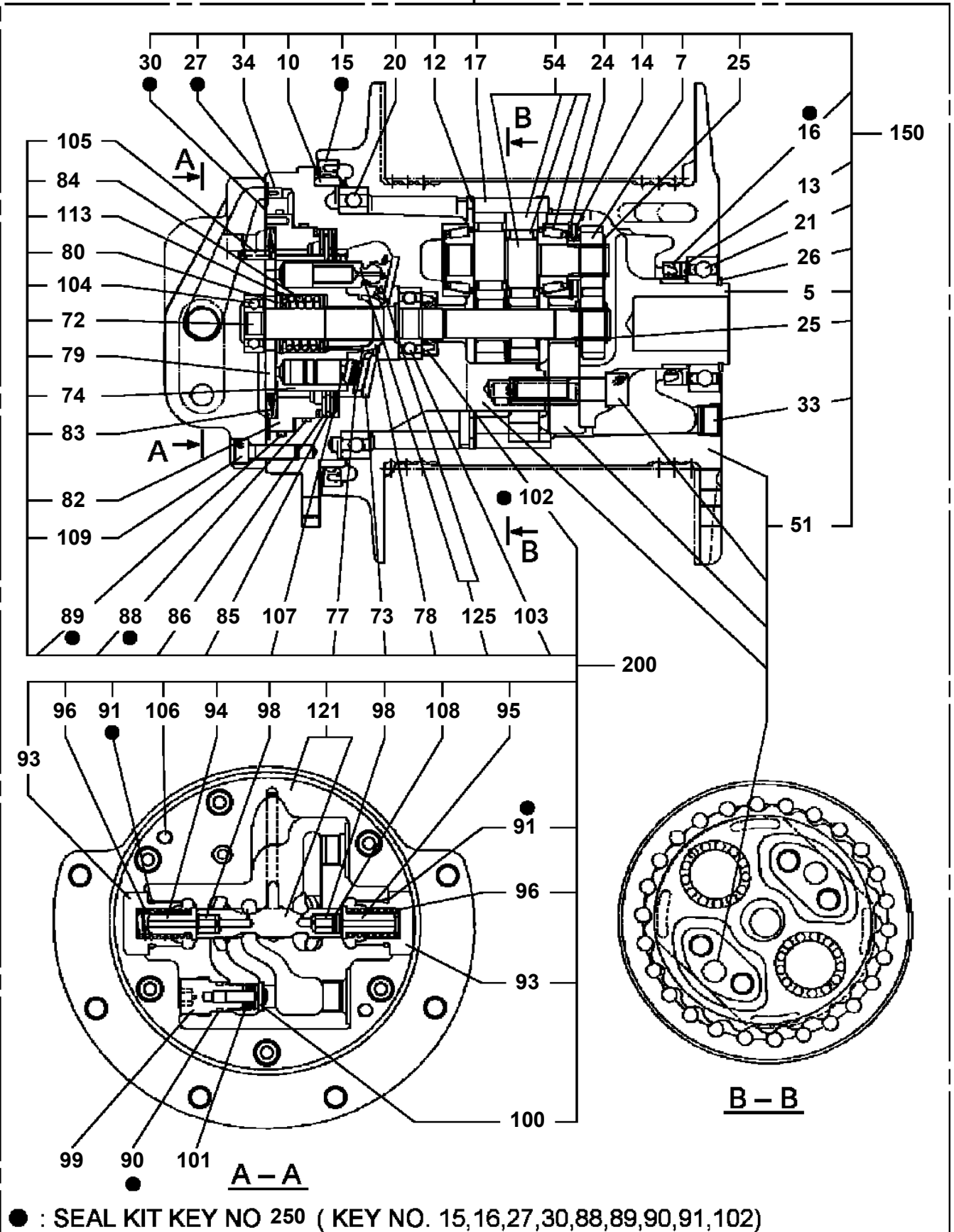
AT-146-1 42095100032 UPPER
PD1010169-00 REDUCER, SWING SPEED

50



AT-146-1 42095100032 UPPER
PF1010168-01 WINCH

300



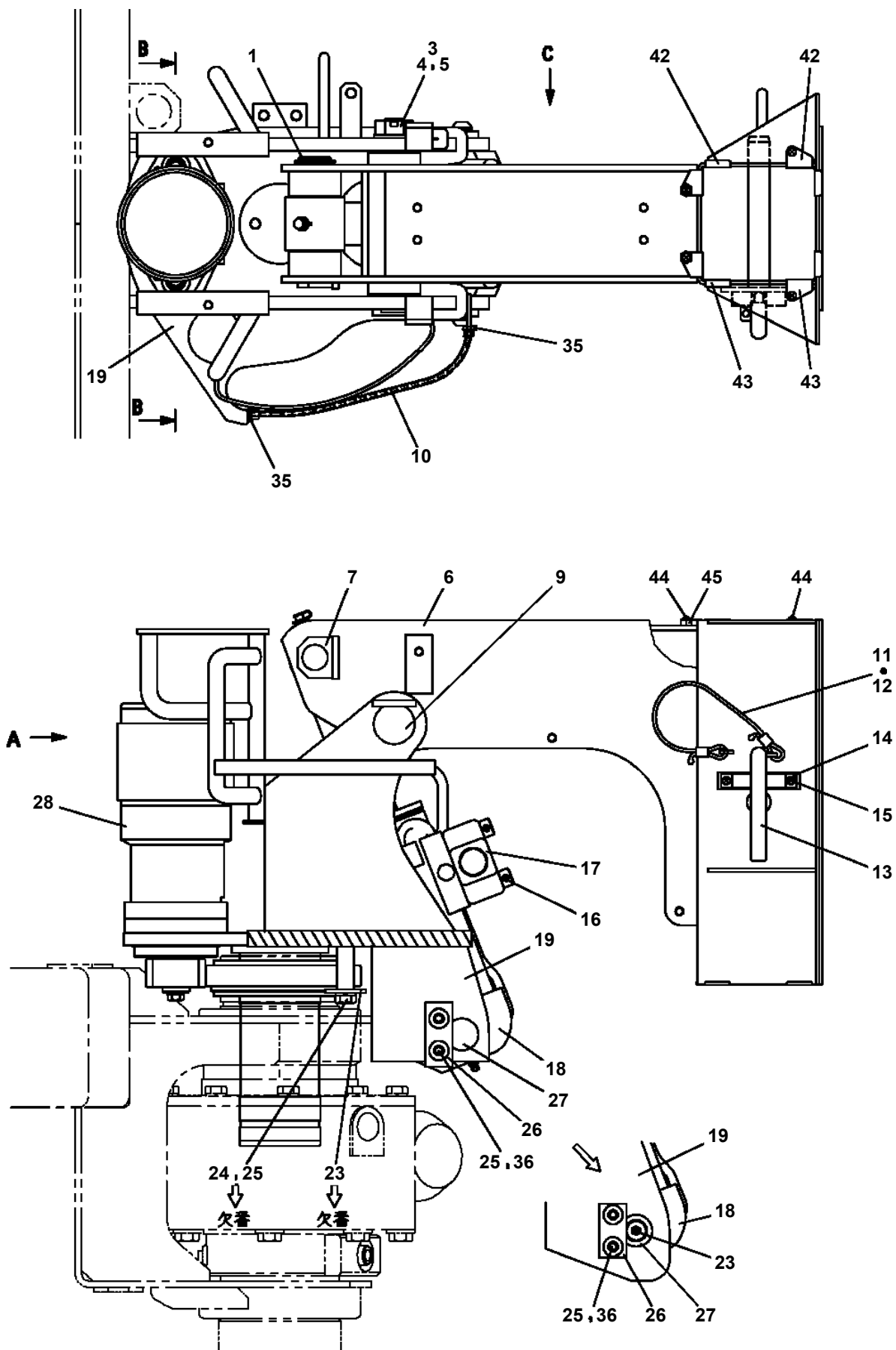
AT-146-1 42095100032 UPPER

Pos No.	Parts No	Parts Name	Qty	Unit	Technical Data	Serial No (Start)	Serial No (End)	Remarks	Pages
1	42477571000	SUPPORT	1						
2	90201201600	NUT	1		M16				
3	90303071601	WASHER,PLAIN	1		16				

AT-146-1 42095100032 UPPER

Pos No.	Parts No	Parts Name	Qty	Unit	Technical Data	Serial No (Start)	Serial No (End)	Remarks	Pages
2	42220041050	PLATE,NAME	2						
3	42220400010	GUIDE	1						
4	42220400020	GUIDE	1						
5	90183106020	BOLT	8		M6X20				
6	90201200600	NUT	8		M6				
7	37001002260	SHEAVE	1						
8	37000312170	SPACER	2						
9	37000302490	SPACER	2		L=2				
10	80603110350	RING,RITAINING	2		C35				
11	42220400040	COVER	2						
12	42220400050	PIN	1						
13	42220400030	GUIDE	2						
14	42220420201	JIB	1						
31	80516006207	BEARING,BALL	1						

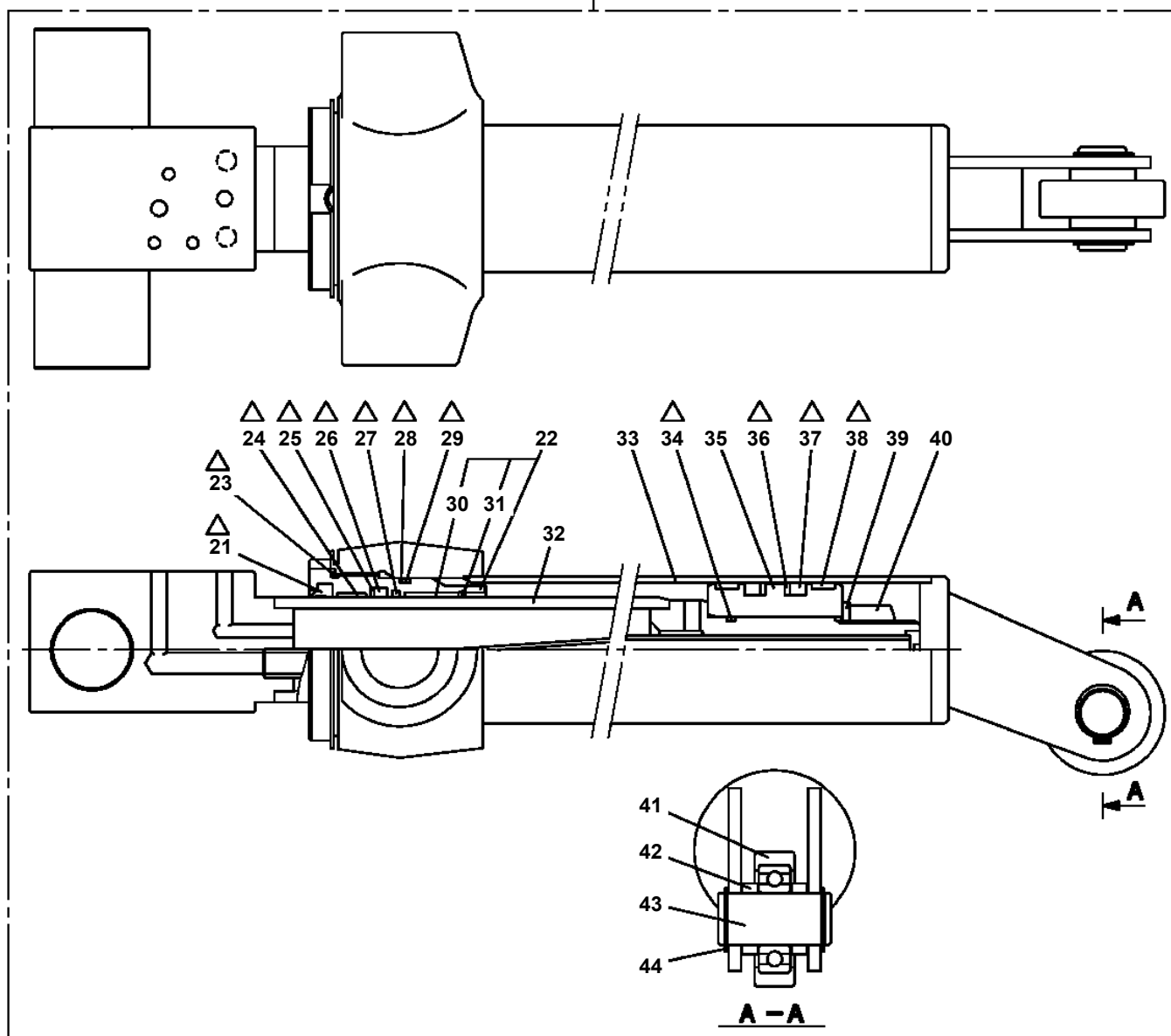
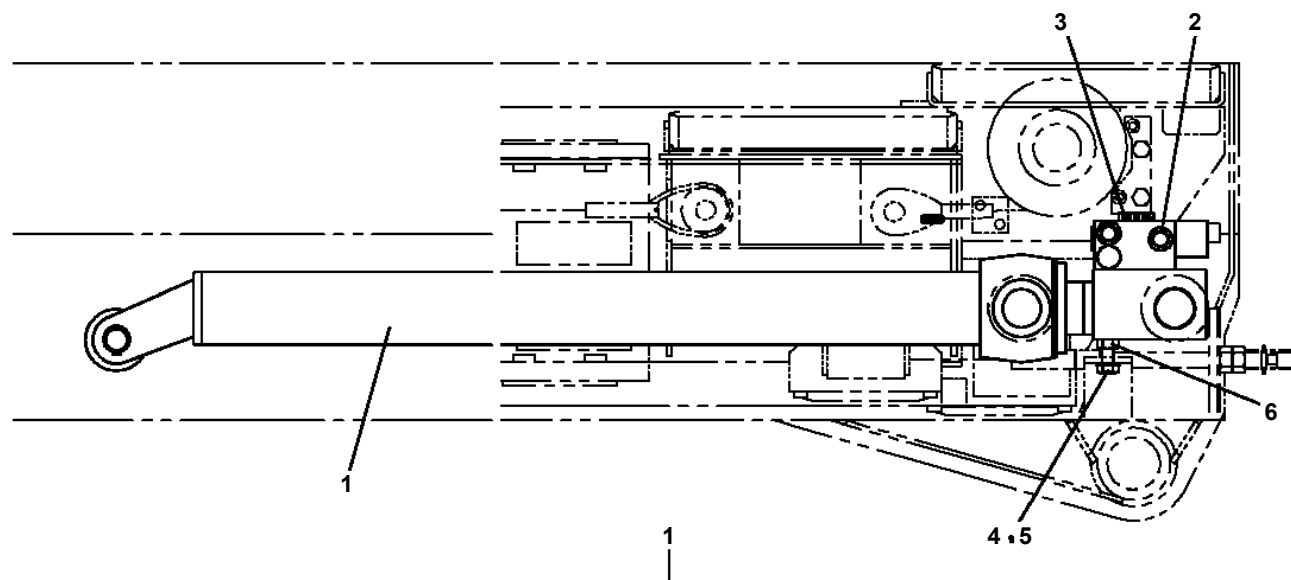
**AT-146-1 42095100032 UPPER
PF1350069-01 WINCH, JIB (SUPPORT)**



AT-146-1 4209510032 UPPER

Pos No.	Parts No	Parts Name	Qty	Unit	Technical Data	Serial No (Start)	Serial No (End)	Remarks	Pages
1	36072490000	WINCH	1				228327		000052
	36073820000	WINCH	1			228328			000053
2	42310951100	SUPPORT	1						
3	42310951200	SUPPORT	1						
4	42310951010	JOINT	1		S,R1/8-10		228354		
	42310951020	JOINT	1			228355			
5	80320030050	FITTING,ELBOW	1		KLE10-020N				
6	42310951300	PIN	1						
7	37002600400	WEDGE	1						
8	90101212018	BOLT	6		M12X18				
9	90302041201	WASHER,SPRING	6		12				
10	90101210016	BOLT	4		M10X16				
11	90302041001	WASHER,SPRING	4		10				
12	90101208018	BOLT	6		M8X18				
13	90302040801	WASHER,SPRING	6		8				
14	80400160128	JOINT	2		S,G3/8-G1/4				
15	91002801400	O-RING	2		1B P14				

**AT-146-1 42095100032 UPPER
PG1050438-01 CYLINDER,TELESCOPING**



△:PACKING SET KEY NO. 51 (KEY NO.21,23,24,25,26,27,28,29,34,36,37,38)

AT-146-1 4209510032 UPPER

Pos No.	Parts No	Parts Name	Qty	Unit	Technical Data	Serial No (Start)	Serial No (End)
1	81408000130	PIPE,STEEL	4	M	10X1.8T		
2	81408000130	PIPE,STEEL	4	M	10X1.8T		
3	81408000241	PIPE,STEEL	4	M	18X1.9T		
4	81408000210	PIPE,STEEL	4	M	15X2.0T		
5	81408000160	PIPE,STEEL	8	M	12X1.4T		
6	80400160201	JOINT	2				
7	37002458200	HOSE	2		L=1850		
8	80320010090	FITTING	1		KUD15-030N		
9	80320010080	FITTING	1		KUD12-030N		
10	80320010140	FITTING	1		KUD18-040N		
11	37000578940	PLATE	4		T=3.0		
12	37002471300	HOSE	4		L=10020		
13	80400160127	JOINT	4				
14	91002801100	O-RING	4		1B P11		
15	37002469220	HOSE	2		L=9700		
16	80430620600	JOINT (WITH O-RING)	1		L,G3/8-G3/8		
17	42345161000	JOINT	1				
18	42343740100	COVER	1				
19	80192486014	SCREW,MACHINE (WITH WASHER)	4		M6X14		
20	90101210020	BOLT	10		M10X20		
21	90302041001	WASHER,SPRING	10		10		
22	42345162000	JOINT	1				
23	80320020080	FITTING	1		KUF12-030N		
24	80320020090	FITTING	1		KUF15-030N		
25	80320020050	FITTING	2		KUF10-020N		
26	37000919790	JOINT	2				
27	91002801400	O-RING	2		1B P14		
28	42344970500	CLAMP	3				
29	42345860100	SUPPORT	1				
30	90180208020	BOLT,BUTTON	2		M8X20		
31	90302040801	WASHER,SPRING	16		8		
32	90171108020	BOLT	4		M8X20		
33	42344970200	ROLLER ASSY	1				
34	42344970600	CLAMP	1				
35	37000556580	PLATE	2				
36	42345860500	CLAMP	1				
37	42344971000	SHEAVE ASSY (MARUCH)	1				
39	90101208045	BOLT	2		M8X45		
40	90101208012	BOLT	2		M8X12		
41	42344970800	SUPPORT	1				
42	37000714020	CLAMP ASSY	1		12X2		
43	37000573430	PLATE	4		T=1		
44	90203201200	NUT	4		M12		
45	90101208020	BOLT	6		M8X20		
46	37000312510	SPACER	2		L=27.5		
47	90303071201	WASHER,PLAIN	4		12		
48	90302041201	WASHER,SPRING	2		12		
49	42344971500	BLADE,WIPER	1				
50	37000564680	PLATE	1				
51	37000576570	PLATE	1				
52	90303070801	WASHER,PLAIN	2		8		
53	42345860200	SUPPORT	1				
71	91002801400	O-RING	5		1B P14		
75	80316070060	PLUG	2		PF3/8		
81	42344970210	SUPPORT	1				
82	37000174180	PIN	1				
83	42340234240	ROLLER	3		W=9		
84	44340392420	ROLLER	4				
85	90303100801	WASHER,PLAIN	14		8		
86	80136320016	PIN,SPLIT	2		2X16		
91	42344971100	SHEAVE (MARUCH)	1				
92	42344971110	PIN	1				
93	80136363050	PIN,SPLIT	2		6.3X50		

AT-146-1 42095100032 UPPER

Pos No.	Parts No	Parts Name	Qty	Unit	Technical Data	Serial No (Start)	Serial
1	36117685010	ESCUTCHEON	1				
2	36119485010	PANEL	1				
3	36119485020	CASE ASSY (WITH CONNECTOR & HARNESS)	1				
4	36119485030	PANEL ASSY	1				
9	36119485040	BOARD,DISPLAY	1				
10	36119935010	BOARD,CIRCUIT	1				
40	(*****)	P-ROM	1				
54	34478187520	FUSE	1		3A 5.2X20L		
100	36119930000	MOMENT LIMITER (H2)	1				

AT-146-1 42095100032 UPPER

Pos No.	Parts No	Parts Name	Qty	Unit	Technical Data	Serial No (Start)	Serial No (End)	Remarks	Pages
100	42614061350	HARNESS	1						

AT-146-1 42095100032 UPPER

Pos No.	Parts No	Parts Name	Qty	Unit	Technical Data	Serial No (Start)	Serial No (End)	Remarks	Pages
100	42612851350	HARNESS	1						

AT-146-1 42095100032 UPPER

Pos No.	Parts No	Parts Name	Qty	Unit	Technical Data	Serial No (Start)	Serial No (End)	Rema
4	91001206500	O-RING	1		1A G65			
5	36660025021	COVER (OIL SEAL)	1					
6	36660025140	SEAL,OIL	1					
7	80602110720	RING,RITAINING	1		R72			
14	36661925010	O-RING	1					
19	14125151020	KEY	1					
50	36662590000	MOTOR,HYDRAULIC (SWING)	1					

AT-146-1 42095100032 UPPER

Pos No.	Parts No	Parts Name	Qty	Unit	Technical Data	Serial No (Start)	Serial No (End)	Remark
1	36606420000	VALVE,RELIEF	1					
2	90309331003	WASHER,CONICAL SPRING	4					

AT-146-1 42095100032 UPPER

Pos No.	Parts No	Parts Name	Qty	Unit	Technical Data	Serial No (Start)	Serial No (End)	Remarks	Pages
11	91001101200	O-RING	2		1A P12				
23	36624110300	SEAT	2						
24	36624110400	SPRING	2						
26	36624110600	PISTON	1						
28	91001101800	O-RING	2		1A P18				
30	36624111000	PACKING	2						
31	36624111100	O-RING	1		P12				
41	36624110100	BODY	1						
42	36624110200	PLUG	2						
45	36624110501	PLUNGER	2						
100	36624110000	VALVE,CHECK	1						

AT-146-1 4209510032 UPPER

Pos No.	Parts No	Parts Name	Qty	Unit	Technical Data	Serial No (Start)	Serial No (End)	Remarks	Pa
2	90101210090	BOLT	2		M10X90				
3	90201201000	NUT	2		M10				
4	90302041001	WASHER,SPRING	2		10				
5	90303071001	WASHER,PLAIN	2		10				
6	42345722100	SUPPORT	1						
7	90101208016	BOLT	2		M8X16				
8	90303070801	WASHER,PLAIN	2		8				
9	90302040801	WASHER,SPRING	2		8				
31	80430620400	JOINT	2						
32	80430620600	JOINT (WITH O-RING)	2		L,G3/8-G3/8				
33	36625760000	VALVE,CHECK	1						
41	91002801100	O-RING	2		1B P11				
51	91002801400	O-RING	2		1B P14				

000

CLICK HERE TO **DOWNLOAD** THE COMPLETE MANUAL

- Thank you very much for reading the preview of the manual.
- You can download the complete manual from: www.heydownloads.com by clicking the link below



- Please note: If there is no response to CLICKING the link, please download this PDF first and then click on it.

CLICK HERE TO **DOWNLOAD** THE COMPLETE MANUAL

AT-146-1 42095100032 UPPER

Pos No.	Parts No	Parts Name	Qty	Unit	Technical Data	Serial No (Start)	Serial No (End)	Remarks	Pages
1	42261172001	BUCKET (WHITE)	1						

AT-146-1 4209510032 UPPER

Pos No.	Parts No	Parts Name	Qty	Unit	Technical Data	Serial No (Start)	Serial No (End)	F
1	37002472840	HOSE	1		L=1770			
2	37002471280	HOSE	1		L=1650			
3	37002473450	HOSE	1		L=2170			
4	42345020700	SUPPORT	1					
5	90101206010	BOLT	3		M6X1.0			
6	90302040601	WASHER,SPRING	7		6			
7	42345020200	SUPPORT	1					
8	90101208014	BOLT	4		M8X14			
9	90302040801	WASHER,SPRING	6		8			
11	37002472860	HOSE	1		L=1050			
12	37002473420	HOSE	1		L=930			
13	37002473430	HOSE	1		L=1220			
14	80430620400	JOINT	2					
15	91810132530	FASTENER	20					
16	80481304024	JOINT	2					
17	91002801800	O-RING	2		1B P18			
18	81408000160	PIPE,STEEL	1	M	12X1.4T			
19	81408000160	PIPE,STEEL	1	M	12X1.4T			
20	80320020080	FITTING	2		KUF12-030N			
21	37002464900	HOSE	2		L=430			
22	91002801400	O-RING	2		1B P14			
23	80456120610	JOINT,SELF SEALING (PLUG)	1					
24	80456110610	JOINT,SELF SEALING (SOCKET)	1					
25	82100001735	SLEEVE	4					
26	42310040050	ROPE (TETORON)	2					
27	91810130230	FASTENER	2					
28	80481302025	JOINT	1		L,G1/4-G1/4			
29	91002801100	O-RING	1		1B P11			
30	37000925320	JOINT (FILTER,WITH O-RING)	1		T,3-G1/4			
31	42345290100	SUPPORT	1					
32	90101206014	BOLT	3		M6X14			
33	90303070601	WASHER,PLAIN	3		6			
34	37000924930	JOINT	1		T G1/4-G1/4-G1/4			
35	90101208040	BOLT	2		M8X40			
36	82100002008	CLAMP	1		WR12			
37	90201200600	NUT	1		M6			
38	82100001412	TUBE,SPIRAL	1	M	SE-12BK			
39	37002473440	HOSE	1		L=980			
40	42345302000	GUIDE	1					
41	90101210012	BOLT	1		M10X12			
42	90302041001	WASHER,SPRING	1		10			
51	80400160200	JOINT	1					
52	80430620400	JOINT	2					
53	91002801100	O-RING	6		1B P11			
54	42343781100	JOINT	1					
55	91002801800	O-RING	2		1B P18			
56	80471020503	JOINT	1		45,G3/8-G3/8			
57	91002801400	O-RING	14		1B P14			
58	37000925680	JOINT	4		S,G3/8-G3/8			
59	80481103020	JOINT	8		PF3/8-PF1/4			
60	80302090161	FITTING	1		KCO12-030N			
61	42343571100	JOINT	1					
62	80302090141	FITTING	1		KCO12-020N			
71	91071011500	O-RING	1		Y22550-115-A			
72	91470000600	RING,BACKUP	1		Y22021-06			

AT-146-1 42095100032 UPPER

Pos No.	Parts No	Parts Name	Qty	Unit	Technical Data	Serial No (Start)	Serial No (End)	Remarks	Pages
1	16715401000	NIPPLE	1						
2	16715403000	SLEEVE	2						
3	16715404000	NIPPLE	2						
4	16715402000	FITTING,ELBOW	1						
5	82456101000	NIPPLE,GREASE	1		A-PT1/8				
6	42345289510	PIPE ASSY	1						
7	82459103000	NIPPLE,GREASE	1		C-PT1/8				

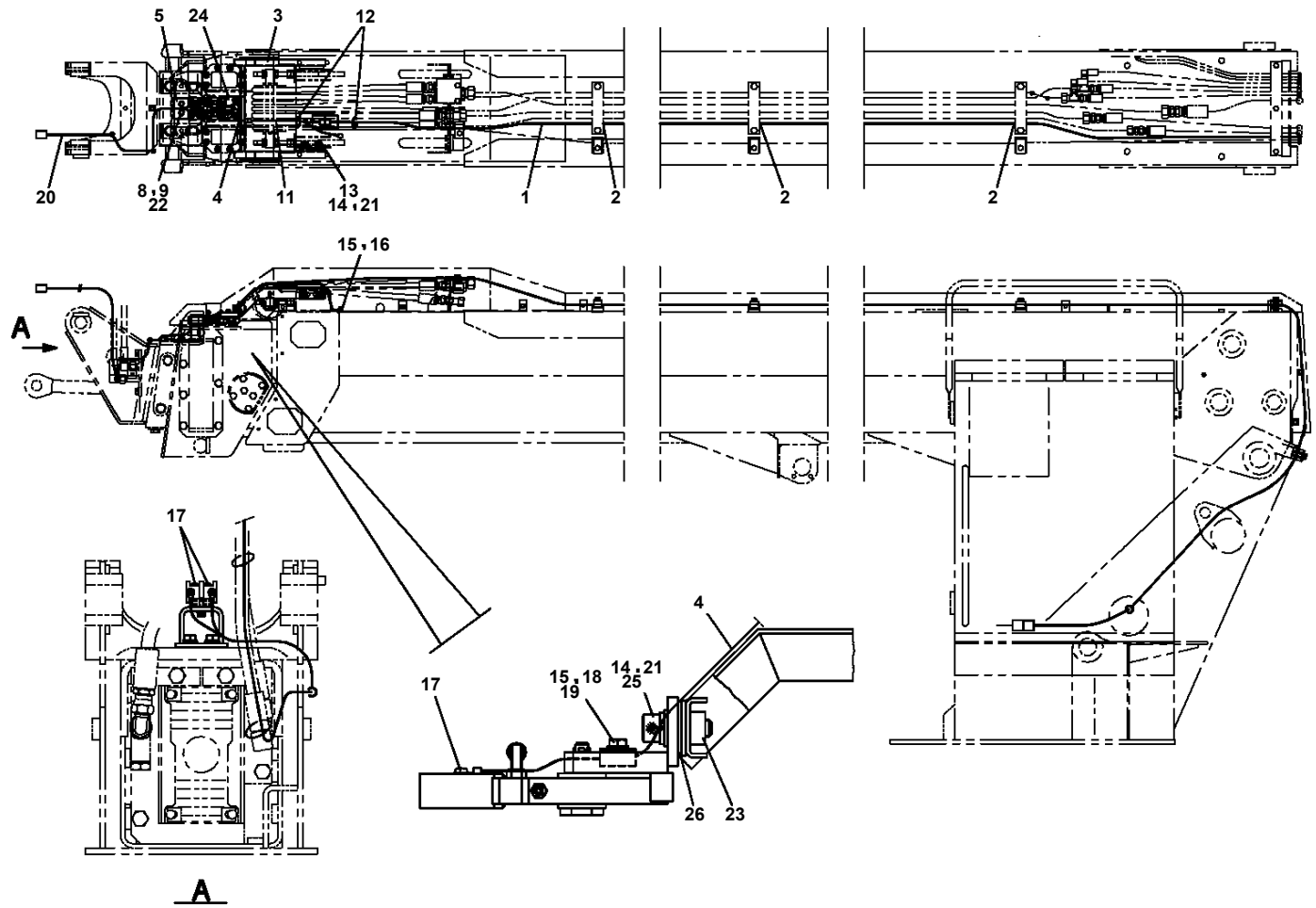
AT-146-1 42095100032 UPPER

Pos No.	Parts No	Parts Name	Qty	Unit	Technical Data	Serial No (Start)	Serial No (End)	Remarks	Pages
1	42479490100	COVER	1						

AT-146-1 4209510032 UPPER

Pos No.	Parts No	Parts Name	Qty	Unit	Technical Data	Serial No (Start)	Serial No (End)
1	42353380100	HARNESS	1				
2	42352450100	SWITCH ASSY	1				
3	82100002596	RELAY	1				
4	80192486010	SCREW,MACHINE	7		M6X10		
5	80192484016	SCREW,MACHINE	6		M4X16		
6	91850400601	CLAMP	7				
7	91810132530	FASTENER	15				
8	90201200800	NUT	1		M8		
9	90302040801	WASHER,SPRING	1		8		
10	90303070801	WASHER,PLAIN	1		8		
11	42353381000	PANEL ASSY	1				
12	82100002017	CLAMP	1		WR30		
13	90280200600	NUT,FLANGE	3		M6		
14	82100001801	TUBE,CORRUGATE	1	M	7		
16	82100002014	CLAMP	1		WR20		
17	82100001807	TUBE,CORRUGATE	1	M	28		
18	82100002010	CLAMP	1		WR15		
19	82161201010	RELAY	2				
20	42350250150	PLUG (6 POLES,MALE)	1				
21	42352190100	RESISTANCE	1				
22	80172303012	SCREW,MACHINE	2		M3X12		
23	90302040301	WASHER,SPRING	2		3		
24	90303070301	WASHER,PLAIN	2		3		
25	42351460010	HARNESS	1		L=3500		
26	42470201060	PLATE	1				
27	42350250090	PLUG (4 POLES,MALE)	1				
28	80192484012	SCREW,MACHINE (WITH WASHER)	10		M4X12		
47	82100002308	COVER	2				
48	82106301007	SWITCH,ROTARY (WITH KEY)	1				
61	42651306900	SWITCH ASSY	1				
62	42351460100	SWITCH ASSY	1				
63	82100002594	RING	1		OGL-31		
64	42651593400	SWITCH ASSY (WITH HARNESS,1 SW)	1				
65	42651591300	SWITCH ASSY (WITH HARNESS,3 SW)	1				
66	42353381100	PLATE,NAME	1				
67	42353381200	PANEL	1				
68	82197518119	CAP (PLUS ONE MFG./BLACK)	5				
	82197518114	CAP (MATSUSHITA/BLACK)	5				
81	42352191000	CONVERTER (DC-DC)	1				227773
82	42353383100	COVER	1				
83	80172305012	SCREW,MACHINE	4		M5X12		
84	90201200500	NUT	4		M5		
85	90302040501	WASHER,SPRING	4		5		
86	90303070501	WASHER,PLAIN	4		5		
122	82181024473	RESISTANCE	2				
139	82101361453	SWITCH,PUSH	1				
155	82105220193	SWITCH,TOGGLE	1				
175	82105220256	SWITCH,TOGGLE	1				
181	42352457510	KEY	1				
191	82101361003	BUTTON	1				
201	42356091000	CONVERTER (ASSY ONLY)	1			227774	

**AT-146-1 42095100032 UPPER
PN1013873-00 ELEC.ASSY (CHARGER)**



AT-146-1 42095100032 UPPER

Pos No.	Parts No	Parts Name	Qty	Unit	Technical Data	Serial No (Start)	Serial No (End)	Remarks	Pages
1	42478871000	LAMP ASSY	1						
21	42478871100	SUPPORT	1						
22	42433401300	LAMP	1						
31	82199444322	LAMP (YELLOW)	1						
41	82100002550	BULB,LAMP	1		24V 20W				

AT-146-1 42095100032 UPPER

Pos No.	Parts No	Parts Name	Qty	Unit	Technical Data	Serial No (Start)	Serial No (End)	Remarks	P
1	42351457510	CASE ASSY	1						
5	42351451260	BOARD,CIRCUIT	1						
21	(*****)	P-ROM	1						
25	42351457540	FUSE	1		5A 5.2X20L				
100	42353371000	TRANSMITTER,SIGNAL	1						

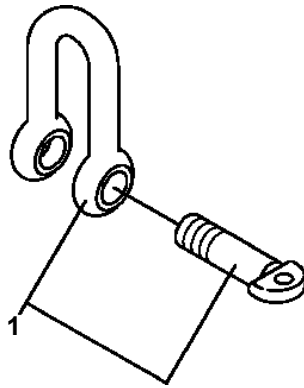
AT-146-1 42095100032 UPPER

Pos No.	Parts No	Parts Name	Qty	Unit	Technical Data	Serial No (Start)	Serial No (End)	Remarks	Pages
1	42391413080	PLATE,NAME	2						
2	42311305510	PLATE,NAME	2						
3	42392583120	PLATE,NAME	1						
4	42392583130	PLATE,CAUTION	1						
5	42311415010	PLATE,NAME	1						

AT-146-1 42095100032 UPPER

Pos No.	Parts No	Parts Name	Qty	Unit	Technical Data	Serial No (Start)	Serial No (End)	Remarks	Pages
1	42395272010	PLATE,NAME	1						
2	42392330070	PLATE,NAME	2						
3	42331782080	PLATE,NAME	1						

**AT-146-1 42095100032 UPPER
PS5150001-00 SHACKLE**



AT-146-1 42095100032 UPPER

Pos No.	Parts No	Parts Name	Qty	Unit	Technical Data	Se
1	42470980100	SWITCH,PUSH	1			
2	82100002220	CABLE	3	M		
3	82100002173	CONNECTOR	1			
10	42470983000	SWITCH BOX (ELECTRIC BOOSTER, 3M,NANABOSI,SINKOU DENKI)	1			

AT-146-1 42095100032 UPPER

Pos No.	Parts No	Parts Name	Qty	Unit	Technical Data	Serial No (Start)	Serial No (End)	Remarks	Pages
1	42351420200	SUPPORT	1						
2	42351420100	SUPPORT	1						
3	82430138010	KNOB	3						
4	90101208040	BOLT	2		M8X40				
5	90303070801	WASHER,PLAIN	2		8				
6	37000506550	PLATE	2		T=1.6				
7	90302040801	WASHER,SPRING	2		8				
8	90101208030	BOLT	1		M8X30				

AT-146-1 42095100032 UPPER

Pos No.	Parts No	Parts Name	Qty	Unit	Technical Data	Serial No (Start)	Serial No (End)	R
1	42470230000	CLAMP HEAD (IZUMI 12TON 3.5M)	1					

AT-146-1 42095100032 UPPER

Pos No.	Parts No	Parts Name	Qty	Unit	Technical Data	Serial No (Start)	Serial No
1	42472640000	CLAMP HEAD (IZUMI 8TON 3.5M ELECTRIC)	1				

AT-146-1 42095100032 UPPER

Pos No.	Parts No	Parts Name	Qty	Unit	Technical Data	Serial No (Start)	Serial
1	42470030000	CUTTER HEAD (IZUMI 6.4TON 2.5M ELECTRIC)	1				

AT-146-1 42095100032 UPPER

Pos No.	Parts No	Parts Name	Qty	Unit	Technical Data	Serial No (Start)	Serial No (End)	Remarks	P
1	42472670000	ROPE (SAFETY,WHITE)	1						

AT-146-1 42095100032 UPPER

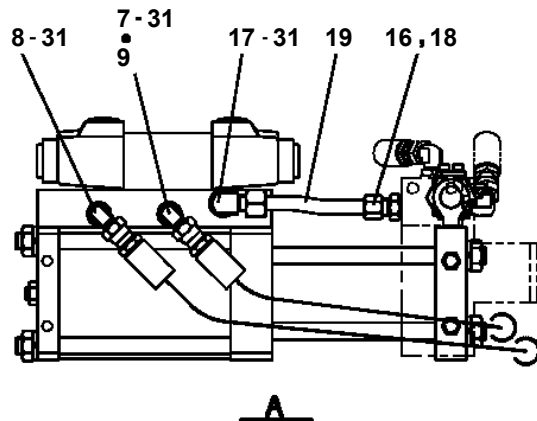
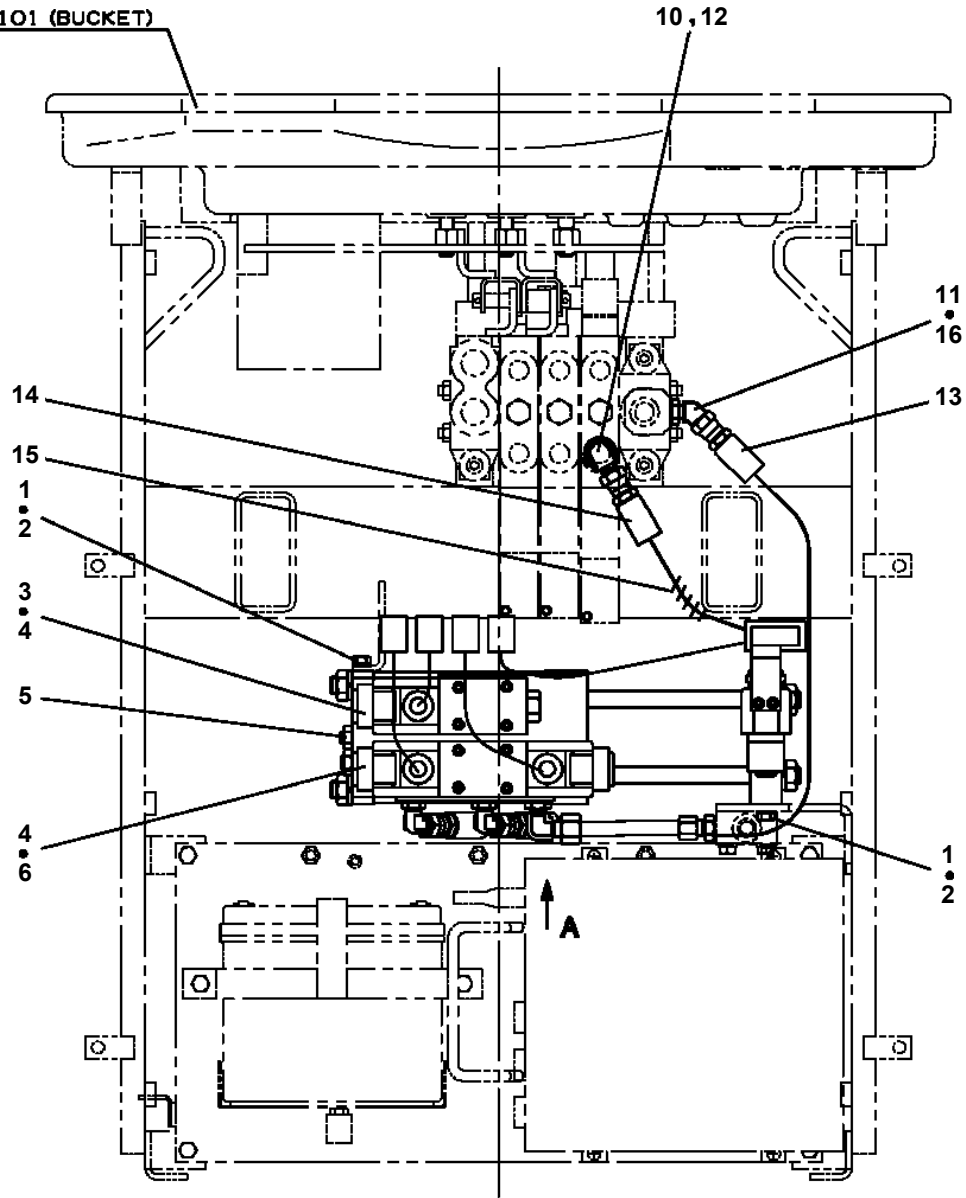
Pos No.	Parts No	Parts Name	Qty	Unit	Technical Data	Serial No (Start)	Serial No (End)	Remarks	Pages
1	42470121000	ARM ASSY	1						
2	42471231000	HOLDER	3						
3	42470123000	CLAMP ASSY	1						
4	42470044000	HOT STICK	1						
5	42475751001	SUPPORT	1						
6	90101216140	BOLT	1		M16X140				
7	90303071601	WASHER,PLAIN	2		16				
8	90201201600	NUT	2		M16				
9	42220011200	SUPPORT	1						
21	42470121100	ARM	1						
22	42470121200	CAP	2						

AT-146-1 42095100032 UPPER

Pos No.	Parts No	Parts Name	Qty	Unit	Technical Data	Serial No (Start)	Serial No (End)	Remarks	Pages
1	42470121000	ARM ASSY	1						
2	42470421000	HOLDER	3						
3	42470123000	CLAMP ASSY	1						
4	42470044000	HOT STICK	1						
5	42476851000	SUPPORT	1						
6	90101216130	BOLT	1		M16X130				
7	90303071601	WASHER,PLAIN	2		16				
8	90201201600	NUT	2		M16				
9	42220011200	SUPPORT	1						
21	42470121100	ARM	1						
22	42470121200	CAP	2						

**AT-146-1 42095100032 UPPER
PY1160096-00 BOOSTER (AIR&ELECTRIC)**

SEE FIG. PN101 (BUCKET)



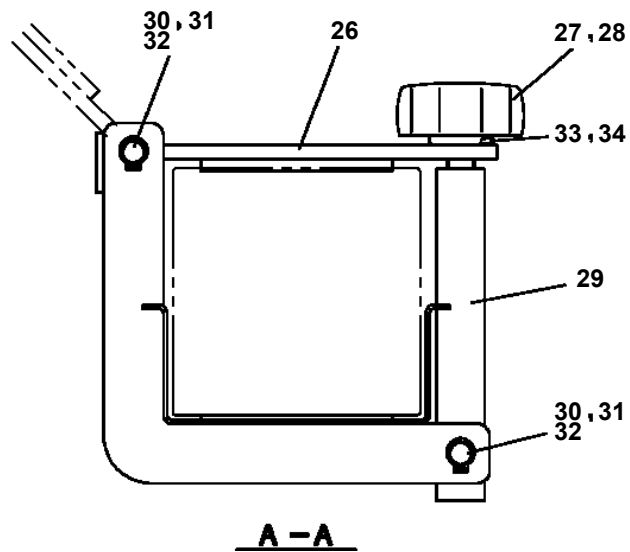
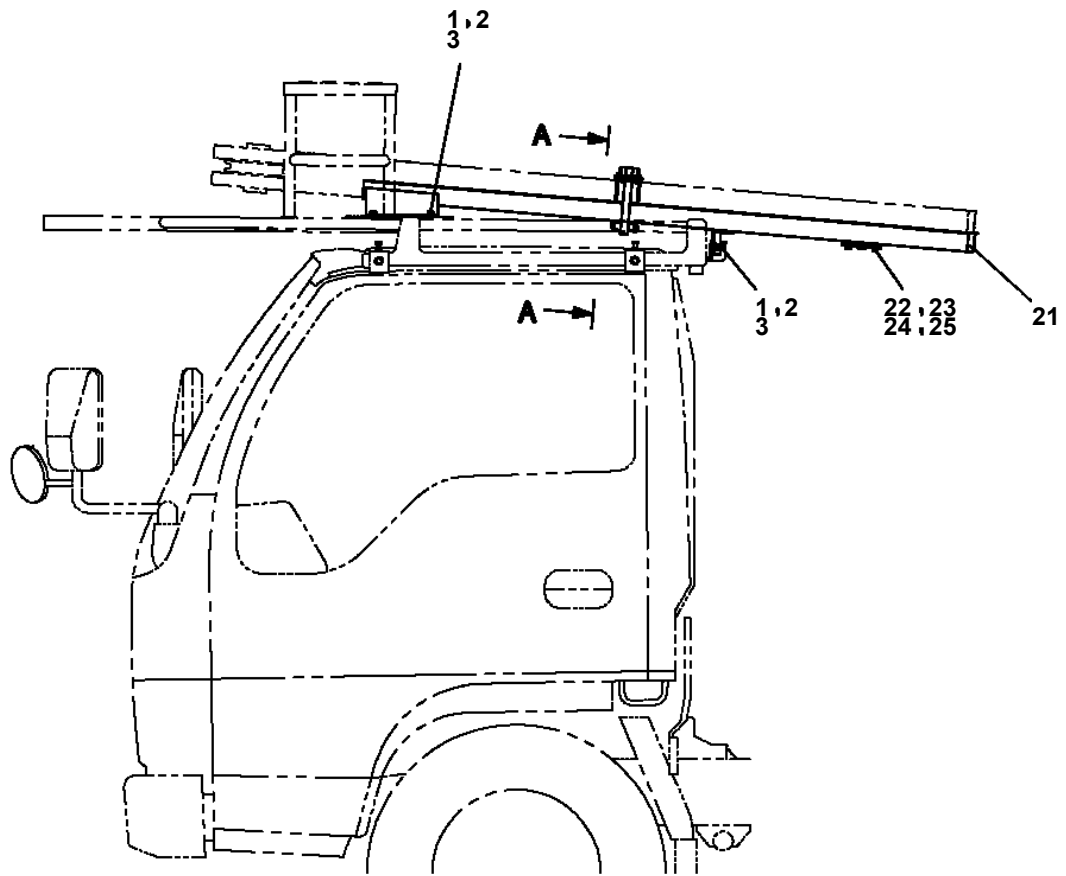
**AT-146-1 42095100032 UPPER
PY1160154-00 BOOSTER (ELEC.,NANABOSHI)**

1	ブースタ BOOSTER
2	ブースタ (ハイセン) BOOSTER (ELEC.)
3	ブースタ (ハイカン) BOOSTER (PIPING)

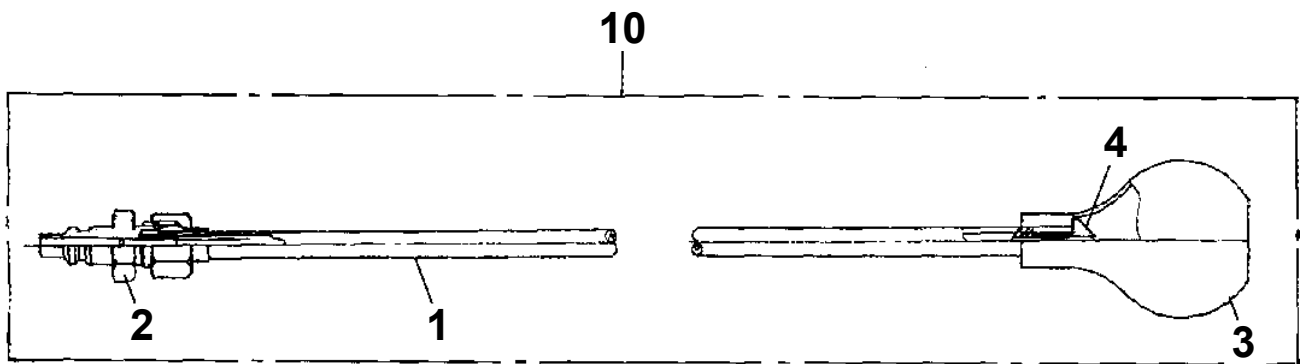
**AT-146-1 42095100032 UPPER
PY1500032-00 SELECTOR,BOOSTER (ELEC.,NANABOSHI)**

1	ブースタ BOOSTER
2	ブースタ (ハイセン) BOOSTER (ELEC.)
3	ブースタ (ハイカン) BOOSTER (PIPING)

AT-146-1 42095100032 UPPER
PY1550032-00 TOOL SUPPORT (JIB STOWING)

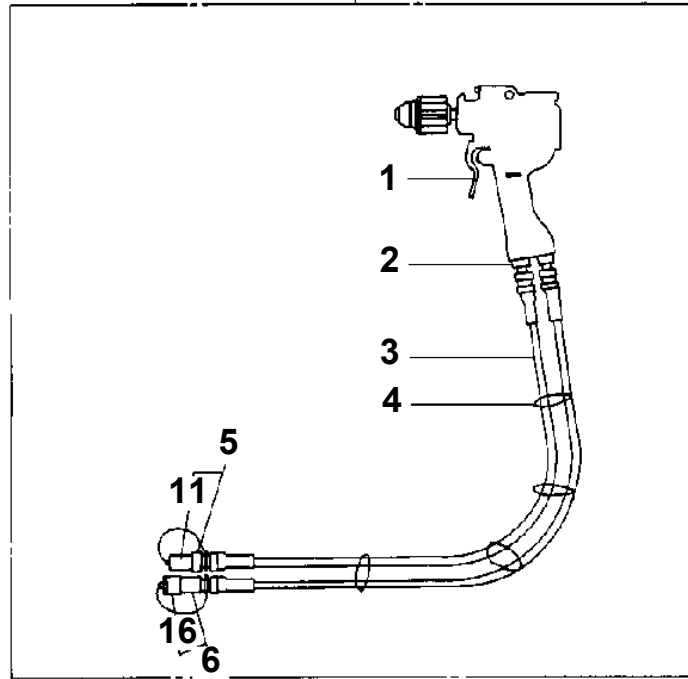


**AT-146-1 42095100032 UPPER
PY1590005-01 HOSE,BOOSTER (SMALL,WITH AIR BALLOON)**

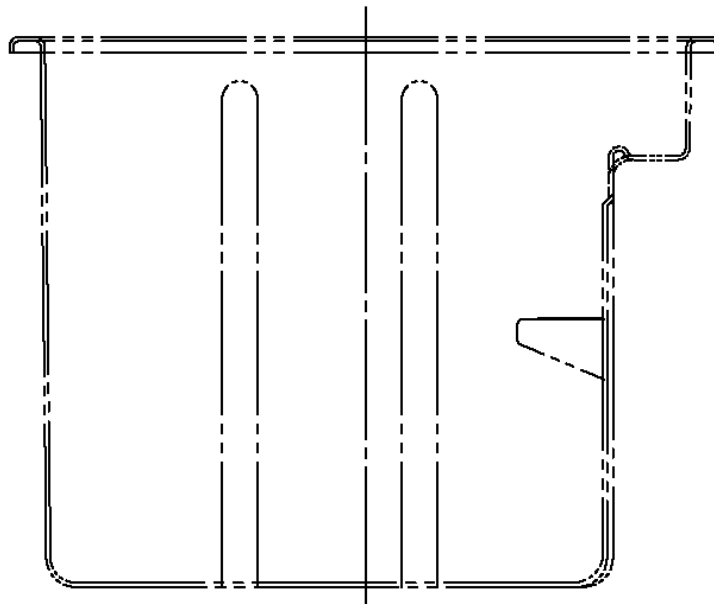
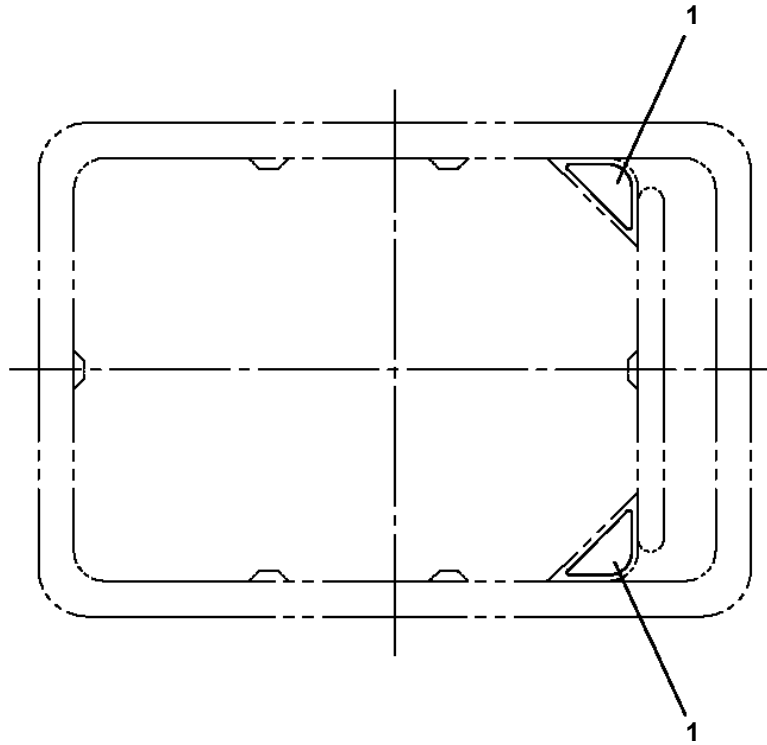


**AT-146-1 42095100032 UPPER
PY1640000-01 DRIL, HYDRAULIC**

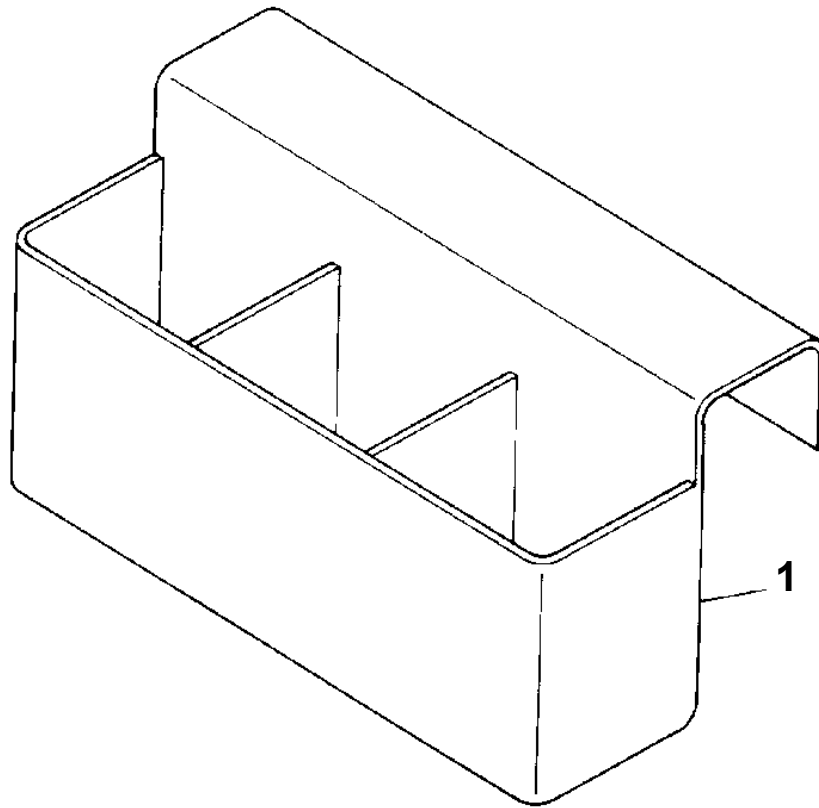
20



**AT-146-1 42095100032 UPPER
PY1760004-00 STEP,BUCKET (NON SLIP)**



**AT-146-1 42095100032 UPPER
PY2120000-00 BOX, TOOL (FOR BUCKET)**



CLICK HERE TO **DOWNLOAD** THE COMPLETE MANUAL

- Thank you very much for reading the preview of the manual.
- You can download the complete manual from: www.heydownloads.com by clicking the link below



- Please note: If there is no response to CLICKING the link, please download this PDF first and then click on it.

CLICK HERE TO **DOWNLOAD** THE COMPLETE MANUAL