

# **AT-146-1 4209510072 UPPER**

PD2000065-00 SWING UNIT  
PF1000474-00 WINCH SYSTEM  
PG2000063-00 BOOM UNIT  
PH1000399-00 SAFETY DEVICES  
PJ3000250-00 BUCKET SYSTEM  
PJ5000003-00 BOOSTER UNIT  
PK2000253-00 FRAME UNIT  
PO1000131-03 INDICATION PLATES  
PY1000662-04 OPTIONS,1  
PY2000028-00 OPTIONS,2  
ASSEMBLY

CLICK HERE TO **DOWNLOAD** THE COMPLETE MANUAL

- Thank you very much for reading the preview of the manual.
- You can download the complete manual from: [www.heydownloads.com](http://www.heydownloads.com) by clicking the link below



- Please note: If there is no response to CLICKING the link, please download this PDF first and then click on it.

CLICK HERE TO **DOWNLOAD** THE COMPLETE MANUAL

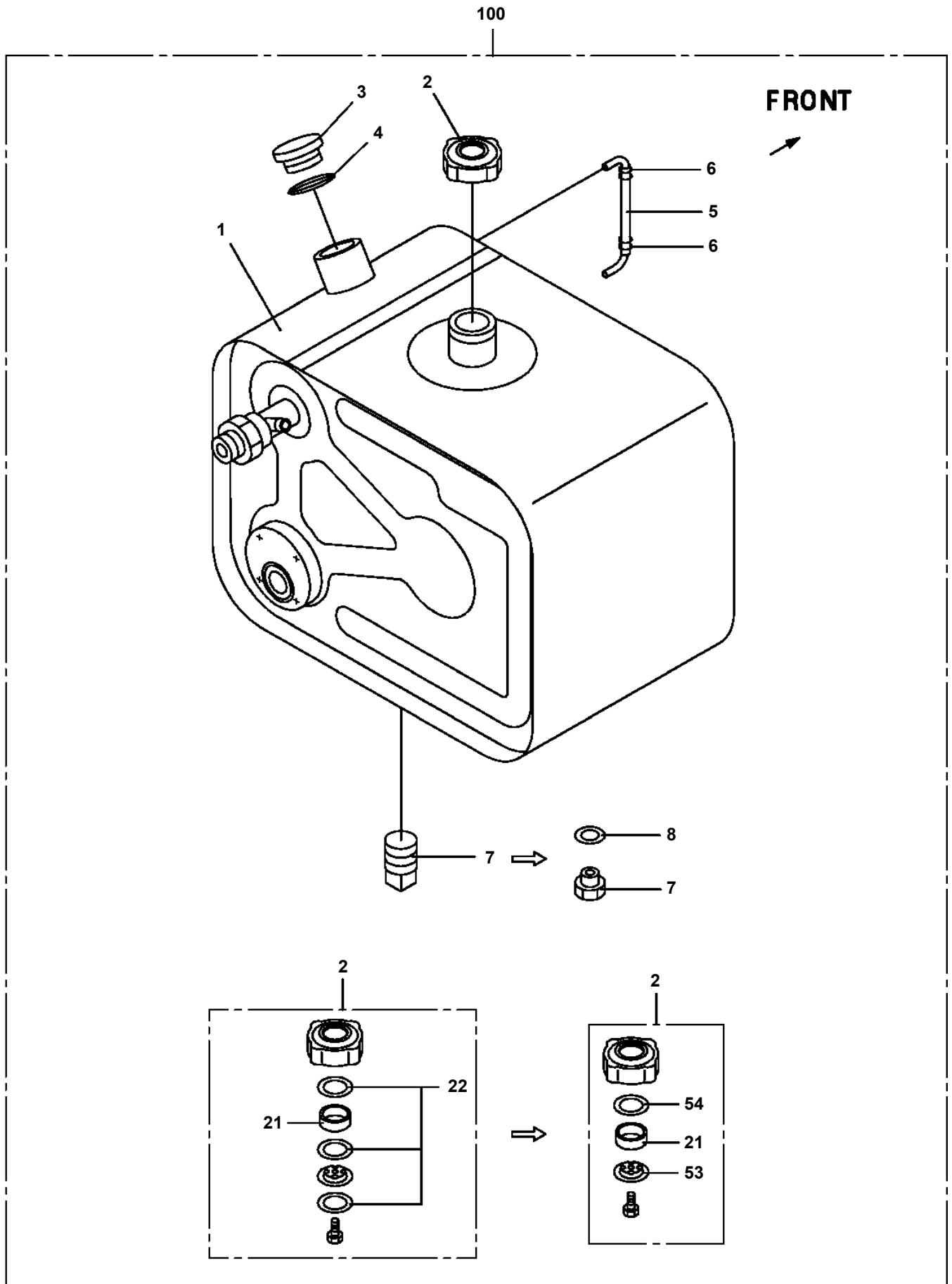
# AT-146-1 42095100072 UPPER

Pos No.	Parts No	Parts Name	Qty	Unit	Technical Data	Serial No (Start)	Serial No (End)
1	(*****)	FRAME	1				
2	(*****)	PIPING (BUCKET)	1				
3	(*****)	ELEC.ASSY (BUCKET)	1				
4	(*****)	OPE.ASSY	1				
5	(*****)	LAMP	1				
6	(*****)	PIPING,GREASE	1				
11	(*****)	BUCKET	1				
12	(*****)	BUCKET (INNER CASE)	1				
13	(*****)	COVER (FRP,BLUE)	1				
14	(*****)	COVER,BOOM (TOP/FRP,BLUE)	1				
15	42265173000	COVER (CLOTH,BLUE)	1				
16	42470341000	ACCESSORIES (BUCKET INNER MAT)	1				
17	(*****)	COVER,BOOM (2ND BOOM/FRP,BLUE)	1				

# AT-146-1 42095100072 UPPER

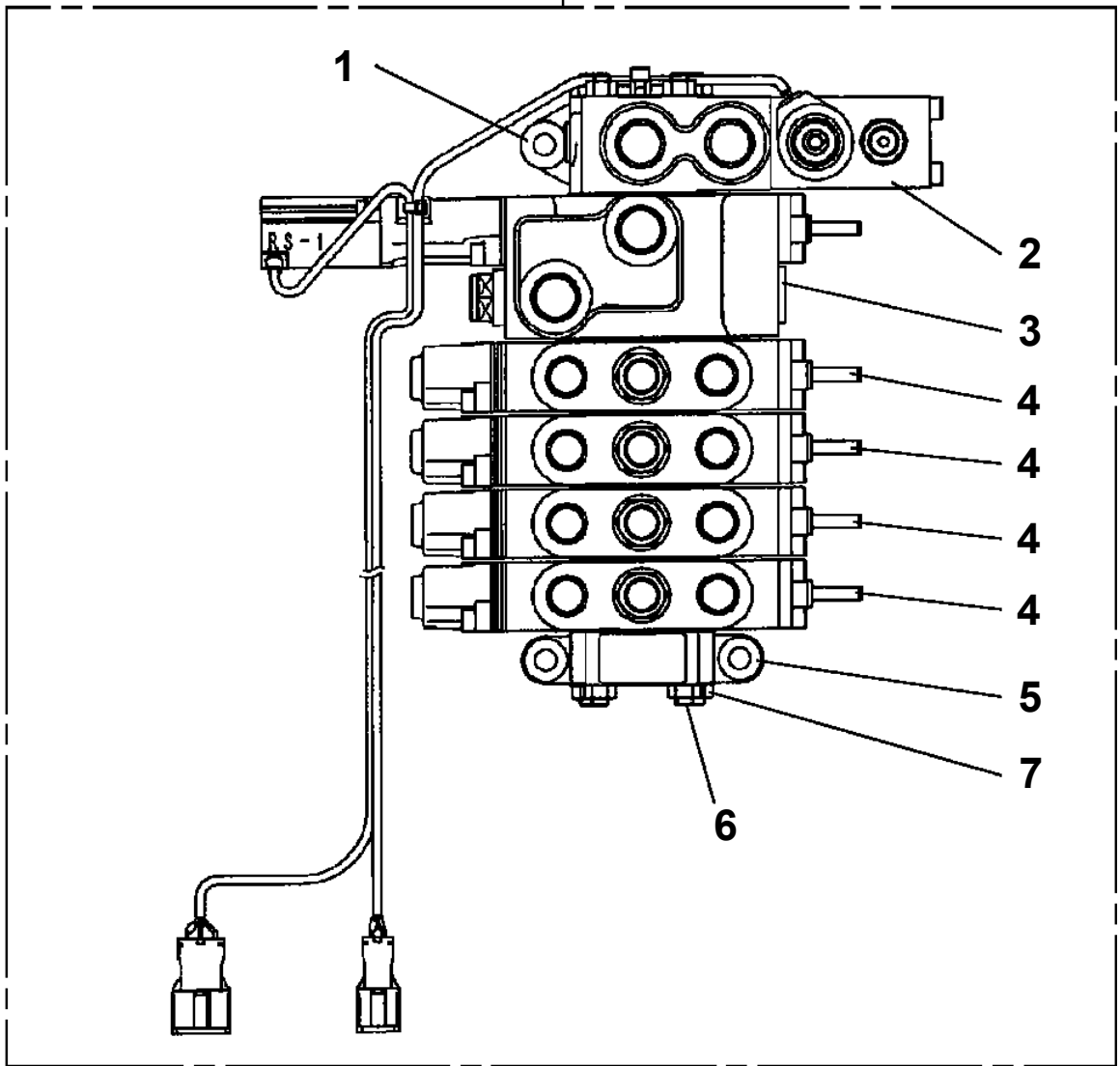
Pos No.	Parts No	Parts Name	Qty	Unit	Technical Data	Serial No (Start)
1	42473340000	STEP,BUCKET	2			
2	42473190000	CUTTER HEAD (IZUMI 6.4TON 2.5M ELECTRICSANWA)	1			
3	42473850000	CLAMP HEAD (IZUMI 8TO,3.5M)	1			
4	42470050000	ROPE (SAFETY,1.5M,WITH HOOK)	2			
5	42475930000	HANGER (FOR BUCKET,FRP)	2			
6	(*****)	SUPPORT	1			
7	42470330000	ROPE (SAFETY,YELLOW:TD-TYPE)	2			
	42472670000	ROPE (SAFETY,WHITE)	2			
9	42472530000	BOX,TOOL (FOR BUCKET)	1			
	42472990000	BOX,TOOL (FOR BUCKET)	1			

AT-146-1 42095100072 UPPER  
PB1130209-02 TANK,OIL

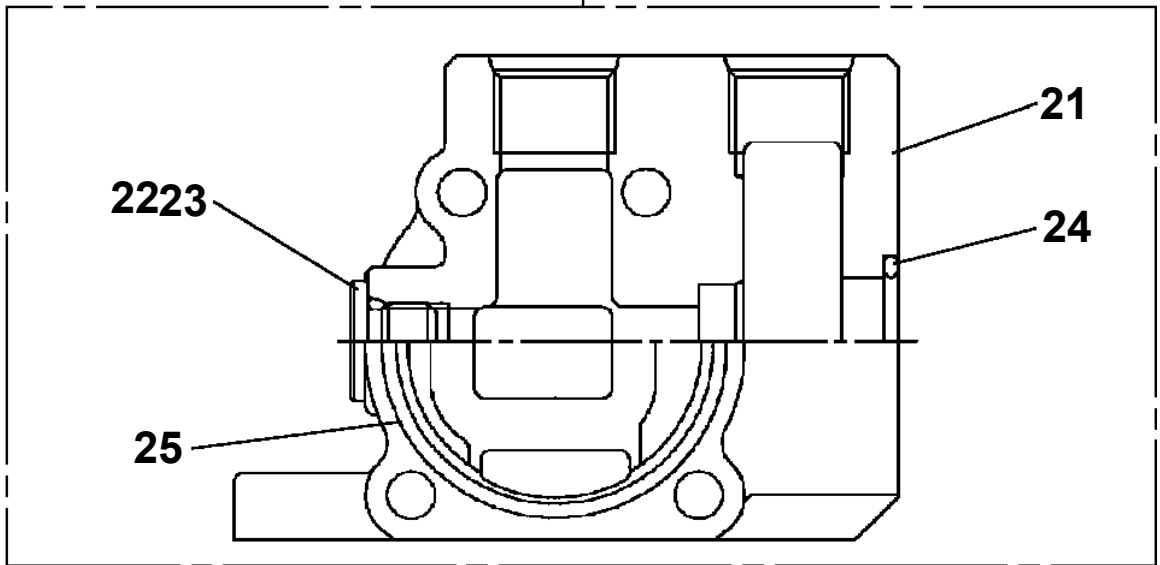


AT-146-1 42095100072 UPPER  
PB1320537-01 VALVE,MANUAL CONTROL

200



1



# AT-146-1 42095100072 UPPER

Pos No.	Parts No	Parts Name	Qty	Unit	Technical Data	Serial No (Start)	Serial No (End)
300	36637850000	VALVE,MANUAL CONTROL	1				

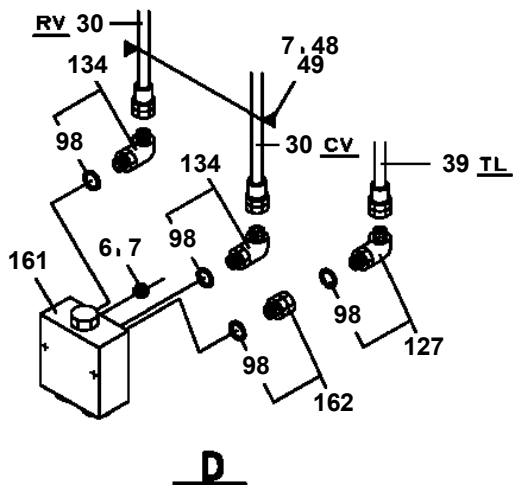
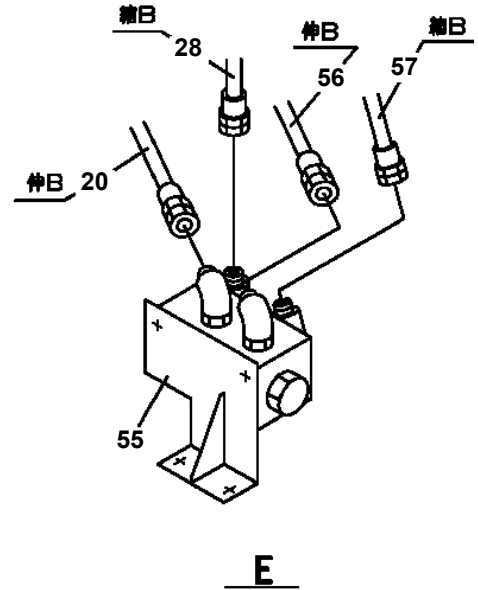
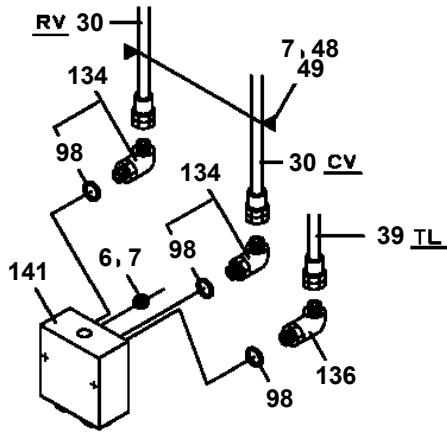
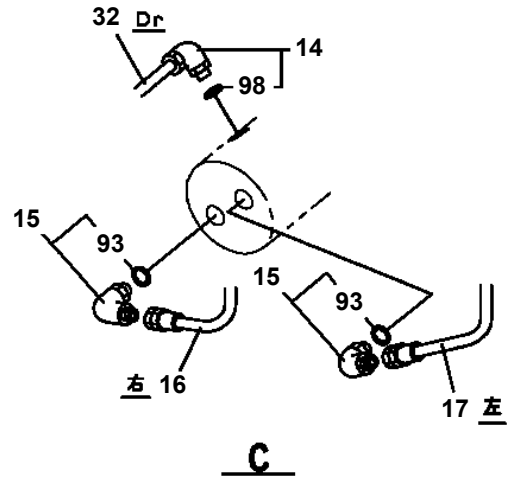
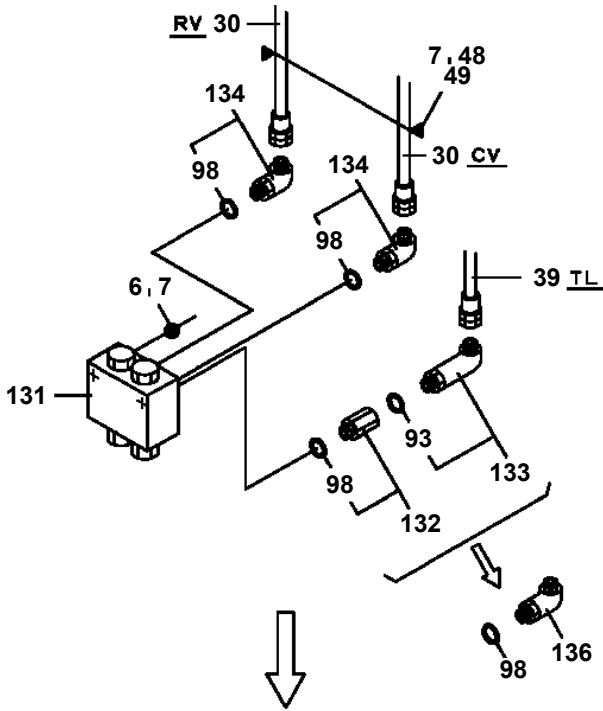
# AT-146-1 4209510072 UPPER

Pos No.	Parts No	Parts Name	Qty	Unit	Technical Data	Serial No (Start)	Serial No (End)	Remarks	Pa
1	80303080080	ELBOW	1						
2	80315040090	JOINT	1						
3	91002802400	O-RING	1		1B P24				
4	36623960000	VALVE,CHECK	1						
5	37000913850	JOINT (WITH O-RING)	1		L,G3/4-G1/2				
6	37002475010	HOSE	1		L=380				
7	90101210025	BOLT	4		M10X25				
8	90302041001	WASHER,SPRING	4		10				
9	42421343600	FITTING,FLANGE	1						
10	91002903000	O-RING	1		1B G30				
11	36672830000	ACCUMULATOR	1						
12	80315020140	JOINT	1		STB3/4X1/2				000
13	80430060800	JOINT	1						
14	80430450850	JOINT	1						
15	90101208035	BOLT	4		M8X35				
16	90302040801	WASHER,SPRING	4		8				
17	37000916310	FITTING,FLANGE	1						
18	91002902500	O-RING	1		1B G25				
19	37000929140	JOINT	1						
20	37001600830	NUT	1		PF1/2				
41	91002802400	O-RING	1		1B P24				

# AT-146-1 4209510072 UPPER

Pos No.	Parts No	Parts Name	Qty	Unit	Technical Data	Serial No (Start)	Serial No (End)
1	42421463100	BOX ASSY	1				227624
	42421463101	BOX ASSY	1			227625	
2	42421345500	PANEL ASSY	1				
3	90201200800	NUT	4		M8		
4	90302040801	WASHER,SPRING	14		8		
5	90303070801	WASHER,PLAIN	7		8		
6	91850400601	CLAMP	1				
7	91810132530	FASTENER	20				
8	82100002017	CLAMP	1		WR30		
9	42421345050	CABLE ASSY	1				
10	82100001216	CAP	1				
11	80192486014	SCREW,MACHINE (WITH WASHER)	4		M6X14		
12	42421153000	CONTROLLER	1				
13	90172106020	BOLT,HEXAGON SOCKET	4		M6X20		
14	90302040601	WASHER,SPRING	11		6		
15	42421345700	PANEL ASSY	1				
16	90101206010	BOLT	7		M6X1.0		
17	90101210018	BOLT	4		M10X18		
18	90302041001	WASHER,SPRING	4		10		
19	42420613200	CONVERTER (PAL)	1				
20	90101208012	BOLT	6		M8X12		
21	82169701030	BREAKER	1				227624
	82169701031	BREAKER	1			227625	
22	80172304025	SCREW,MACHINE	2		M4X25		227624
	80172304055	SCREW,MACHINE	2		M4X55	227625	
23	90302040401	WASHER,SPRING	2		4		
25	90101208020	BOLT	7		M8X20		
26	42421345030	CABLE ASSY	1				
27	42421345040	CABLE ASSY	1				
28	42421345060	CABLE ASSY	1				
29	42421175050	CABLE ASSY	1		L=600		
30	42421345400	PLATE	1				
31	82100002019	CLAMP	1		WR40		
32	90302040501	WASHER,SPRING	1		5		
33	90101205010	BOLT	1		M5X10		
34	82400000204	GROMMET	1	M	L=320		
51	42421463200	BOX	1				227624
	42421463201	BOX	1			227625	
52	42421463300	COVER	1				
53	90201200500	NUT	10		M5		
54	90302040501	WASHER,SPRING	15		5		
55	80172305012	SCREW,MACHINE	4		M5X12		
56	82400000318	CATCH	1				
57	80172303008	SCREW,MACHINE	4		M3X8		
58	90201200300	NUT	2		M3		
59	90302040301	WASHER,SPRING	4		3		
60	80175305012	SCREW,MACHINE	6		M5X12		
61	82464100251	HINGE	2				
62	90101205010	BOLT	1		M5X10		
63	42832841400	CHAIN	1				
71	42421345550	PANEL	1				
72	42420623600	LAMP ASSY (RED)	1				
81	42421345750	PANEL	1				
82	90101206016	BOLT	3		M6X16		
83	90302040601	WASHER,SPRING	4		6		
84	42421345720	COVER	1				
85	90101206025	BOLT	1		M6X25		
91	42421571110	CABLE ASSY	1				
92	42421345650	SUPPORT	1				
93	82400000219	GROMMET	1				
94	80172305010	SCREW,MACHINE	4		M5X10		
104	82100002486	LAMP,PILOT	1				
113	82420101613	TRIM	1	M			

**AT-146-1 42095100072 UPPER  
PB1400399-05 PIPING,UPPER**



# AT-146-1 4209510072 UPPER

Pos No.	Parts No	Parts Name	Qty	Unit	Technical Data	Serial No (Start)	Serial No (End)
1	42613351000	OUTRIGGER (FRONT,L/INNER CASE)	1				227646
	42613351001	OUTRIGGER (FRONT,L/INNER CASE)	1			227647	
2	42613353000	OUTRIGGER (FRONT,R/INNER CASE)	1				227646
	42613353001	OUTRIGGER (FRONT,R/INNER CASE)	1			227647	
3	37002012620	PLATE,SLIDE	2				
4	31611640150	SPRING	2				
5	90171108016	BOLT	4		M8X16		
6	37000504780	PLATE	N		T=0.6		
7	90302041001	WASHER,SPRING	32		10		
8	90186208010	BOLT,FLANGE	4		M8X10		
9	42612850300	PLATE	4				
11	90101206014	BOLT	4		M6X14		
12	90302040601	WASHER,SPRING	4		6		
13	42612850400	BLADE	2				
14	42613350010	SUPPORT	2				
16	42613350100	PLATE	16				
17	90171110025	BOLT	32		M10X25		
18	37000501960	PLATE	N		T=0.5		227414
	37000581940	PLATE	N		T=0.5	227415	
19	37000501970	PLATE	N		T=1.5		227414
	37000506590	PLATE	N		T=1.6	227415	
20	90303070601	WASHER,PLAIN	4		6		
21	37002011280	PLATE,SLIDE	18		T=9.5		
22	90101208012	BOLT	4		M8X12		
23	90302040801	WASHER,SPRING	4		8		
24	37000575240	PLATE	2		T=3		
25	37000178190	PIN	2				

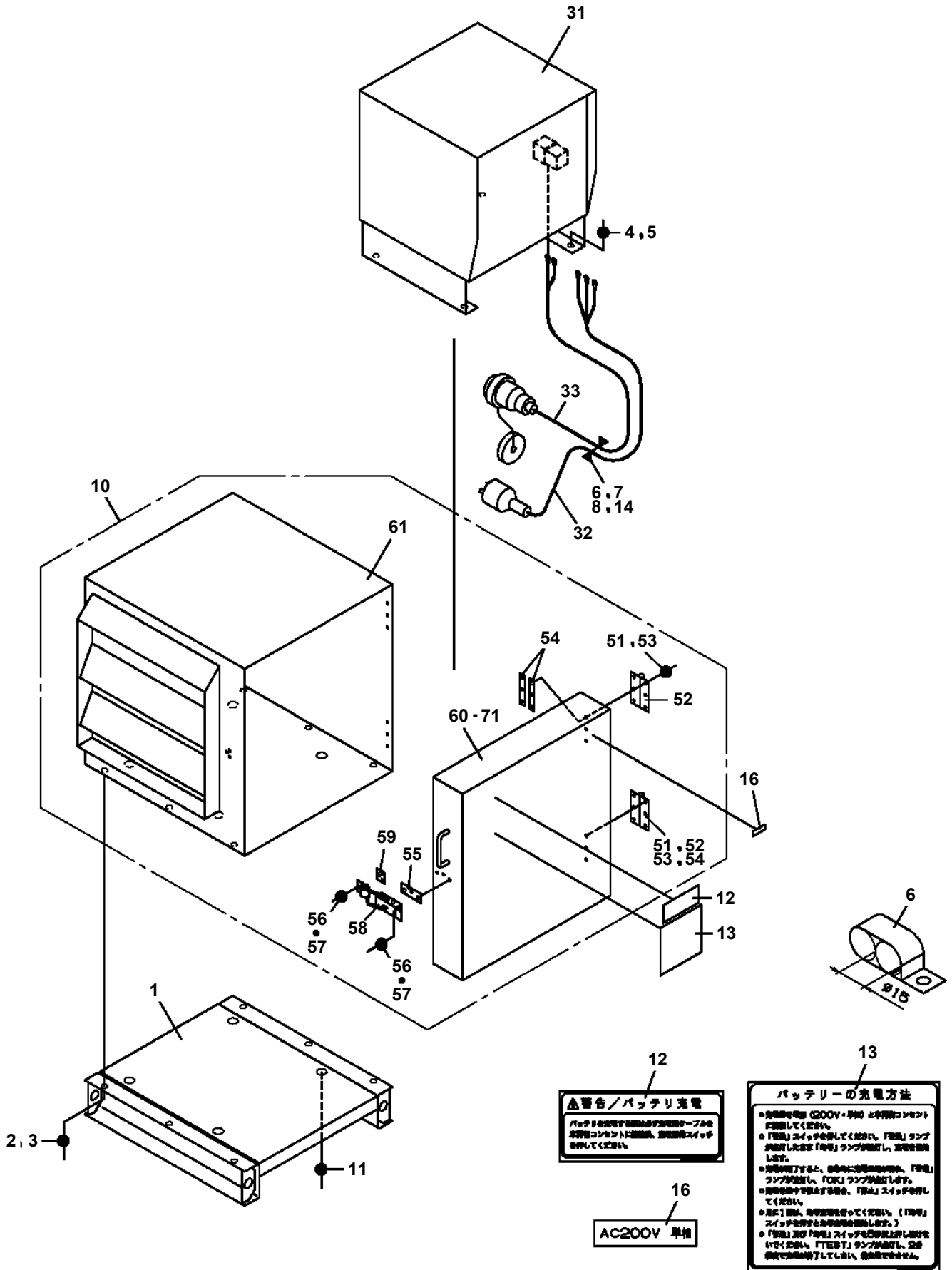
# AT-146-1 4209510072 UPPER

Pos No.	Parts No	Parts Name	Qty	Unit	Technical Data	Serial No (Start)	Serial No (End)
1	42613353100	CASE,INNER	1				
2	42613351200	CASE,INNER (JACK)	1				
4	36035100000	CYLINDER,JACK	1				
5	42613351400	FLOAT ASSY	1				
6	37000171720	PIN	1				
7	80601110250	RING,RITAINING	2		S25		
8	37000169010	PIN	1		30		
9	80601110300	RING,RITAINING	2		S30		
10	36625740001	VALVE,CHECK	1				
11	90171108055	BOLT	4		M8X55		
12	37000138750	PIN	1		18		
13	80136332036	PIN,SPLIT	2		3.2X36		
14	80400160127	JOINT	1				
15	91002801100	O-RING	1		1B P11		
16	36672460000	FILTER (NIPPLE TYPE)	1				
17	42612851010	COVER	1				
18	90186206014	BOLT,FLANGE	2		M6X14		
19	37000112320	PIN	1				
20	80601110120	RING,RITAINING	2		S12		
21	91810130240	FASTENER	2				
22	31201770100	PLATE,SLIDE	8		T=3.0		
23	90280200600	NUT,FLANGE	1		M6		
24	37000600700	CLAMP	1		12X3		
41	36042810000	CYLINDER,EXTENSION (FRONT)	1				
42	80400160127	JOINT	2				
43	91002801100	O-RING	3		1B P11		
44	37002474970	HOSE	1		L=1820		
45	42612853350	HARNESS	1				
46	91810130240	FASTENER	13				
51	42612851420	TRUNNION	1				
100	42613353001	OUTRIGGER (FRONT,R/INNER CASE)	1				

# AT-146-1 42095100072 UPPER

Pos No.	Parts No	Parts Name	Qty	Unit	Technical Data	Serial No (Start)	Serial No (End)	Remarks
1	36637490000	VALVE,MANUAL CONTROL	1					
2	90101208025	BOLT	3		M8X25			
3	90302040801	WASHER,SPRING	3		8			
4	32700007500	LEVEL	1					
5	42701200100	LEVER	1					
6	42701200200	LEVER	1					
7	42701200300	LEVER	1					
8	42701200400	LEVER	1					
9	42701200500	LEVER	1					
10	31323330200	KNOB (RED)	1					
11	31323330100	KNOB (BLACK)	4					
12	37000105610	PIN	10		L=18			
13	90303070501	WASHER,PLAIN	10		5			
14	80136320010	PIN,SPLIT	10		2X10			

**AT-146-1 42095100072 UPPER  
PC5210008-00 CHARGER ASSY (200V,SINGLE PHASE)**



**▲警告/バッテリー充電**  
 バッテリーを充電する際は必ず充電ケーブルを  
 本装置コンセントに接続し、充電スイッチを  
 押してください。

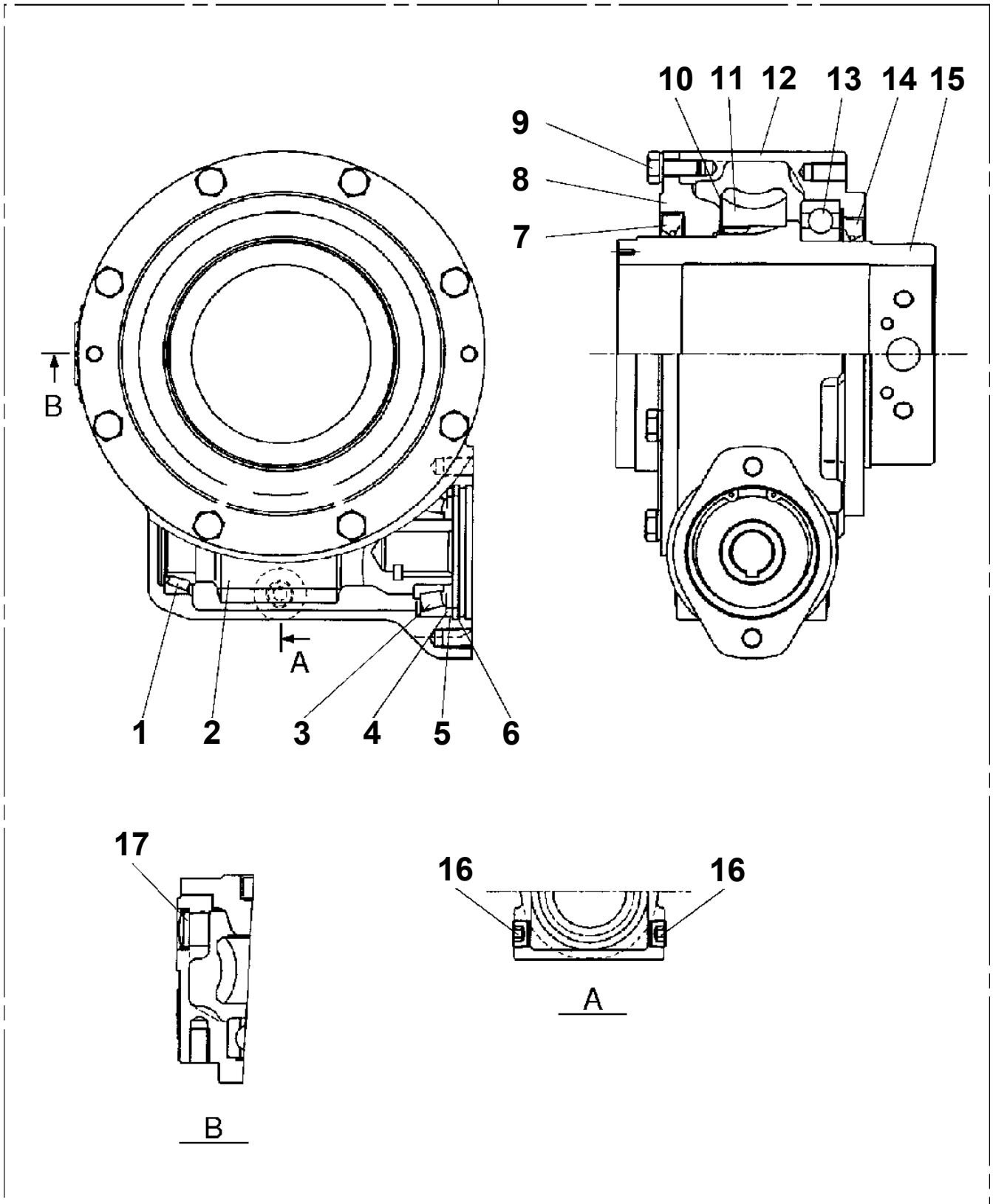
AC200V 単相

**バッテリーの充電方法**

- 充電器電圧 200V・单相と本装置コンセントに接続してください。
- 「充電」スイッチを押してください。「充電」ランプが点灯したとき「充電」ランプが点灯し、充電を開始します。
- 充電が完了すると、自動的に充電器が停止し、「充電」ランプが点滅し、「OK」ランプが点灯します。
- 充電が途中で停止する場合は、「停止」スイッチを押してください。
- 目玉：目玉、充電器が点灯していません。(「充電」スイッチを押すと充電器が点灯します。)
- 「充電」ランプが「充電」スイッチを点灯し、充電を開始してください。「TEST」ランプが点灯し、充電が完了していません。充電器が点灯しません。

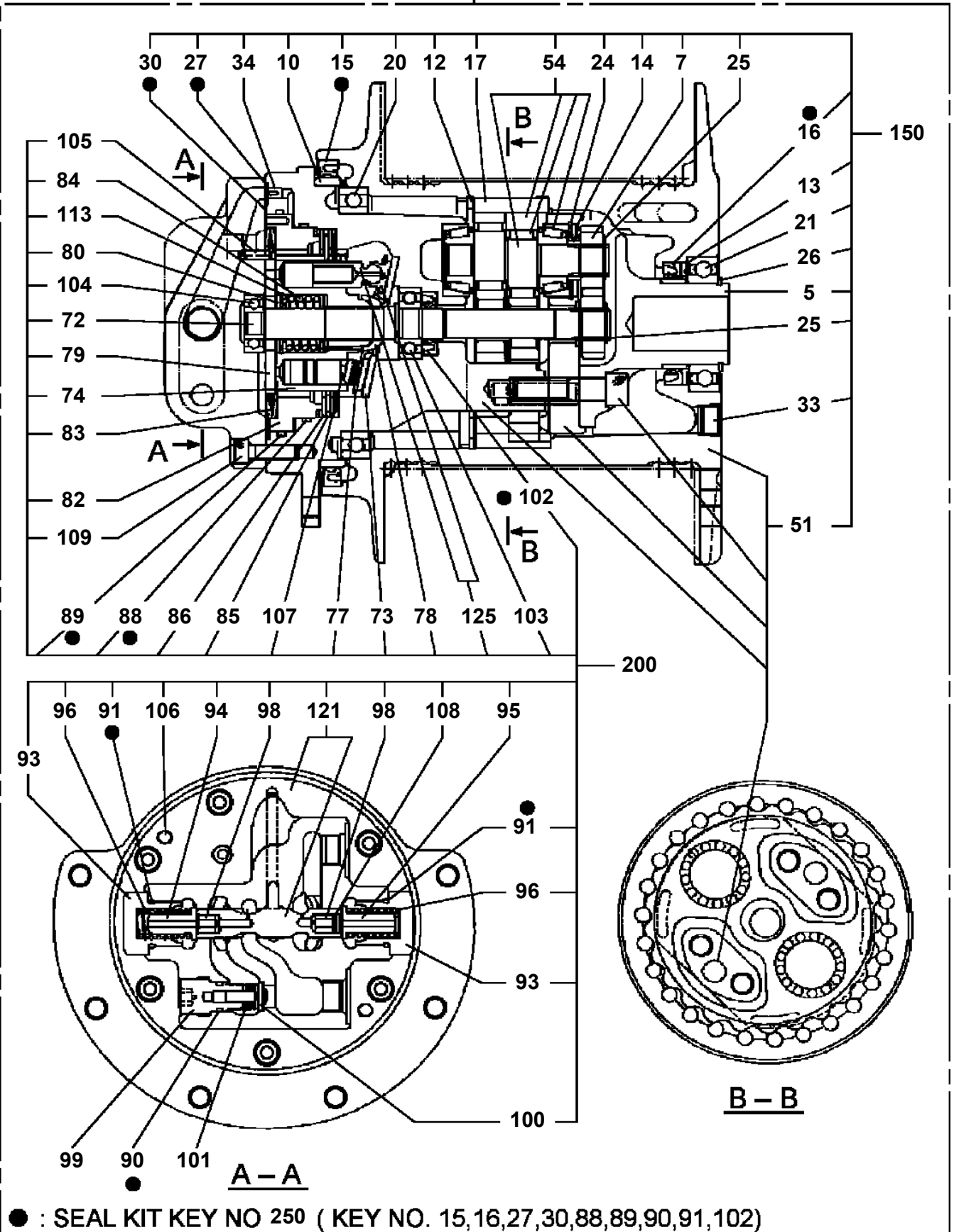
AT-146-1 42095100072 UPPER  
PD1010169-00 REDUCER, SWING SPEED

50



AT-146-1 42095100072 UPPER  
PF1010168-01 WINCH

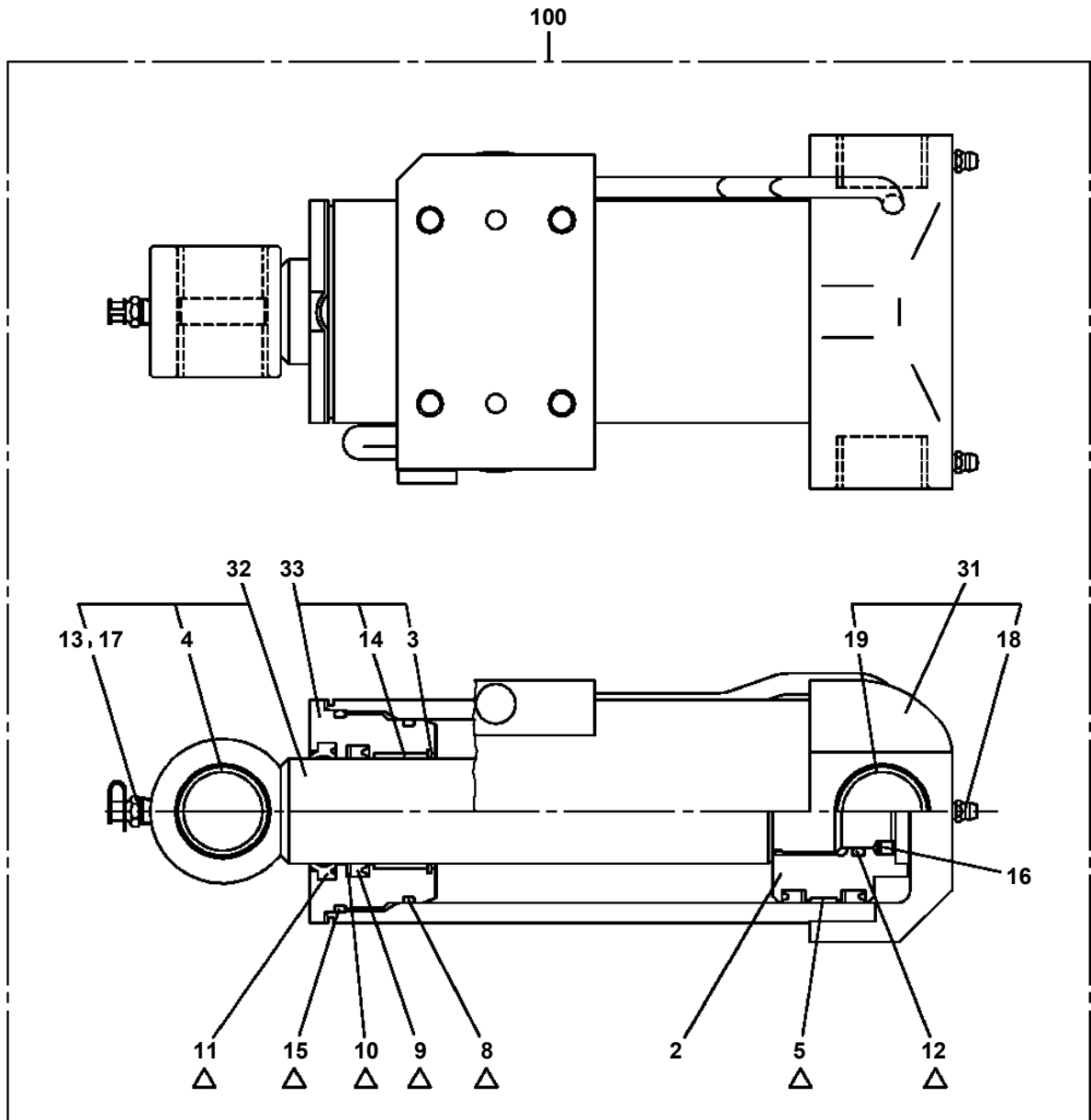
300



# AT-146-1 4209510072 UPPER

Pos No.	Parts No	Parts Name	Qty	Unit	Technical Data	Serial No (Start)	Serial No (End)	Remarks	Pa
1	37002472100	HOSE	1		L=890				
2	37002472060	HOSE	1		L=2350				
3	37002472070	HOSE	1		L=2370				
4	37002472080	HOSE	1		L=1850				
5	37002459850	HOSE	1		L=2100 TO 1850				
6	37002472090	HOSE	2		L=1620				
7	37002472050	HOSE	1		L=2170				
8	37000924960	JOINT (WITH O-RING)	1						
9	42342460320	ORIFICE	2		1.0		227955		
	36033124000	ORIFICE	2			227956			
10	80481304024	JOINT	2						
11	91002801800	O-RING	2		1B P18				
12	80430620400	JOINT	1						
13	91002801100	O-RING	1		1B P11				
14	91810132530	FASTENER	3						
15	37000924410	JOINT	1		PF1/4-PF1/4				
16	42311304300	GUIDE	1						
17	42311304400	GUIDE	1						
18	90101208014	BOLT	4		M8X14				
19	90302040801	WASHER,SPRING	4		8				
20	90101206014	BOLT	1		M6X14				
21	90302040601	WASHER,SPRING	1		6				
41	91002801100	O-RING	2		1B P11				

**AT-146-1 42095100072 UPPER  
PF1360004-00 CYLINDER,WINCH JIB**



Δ:PACKING SET KEY NO.34 (KEY NO.5,8,9,10,11,12,15)

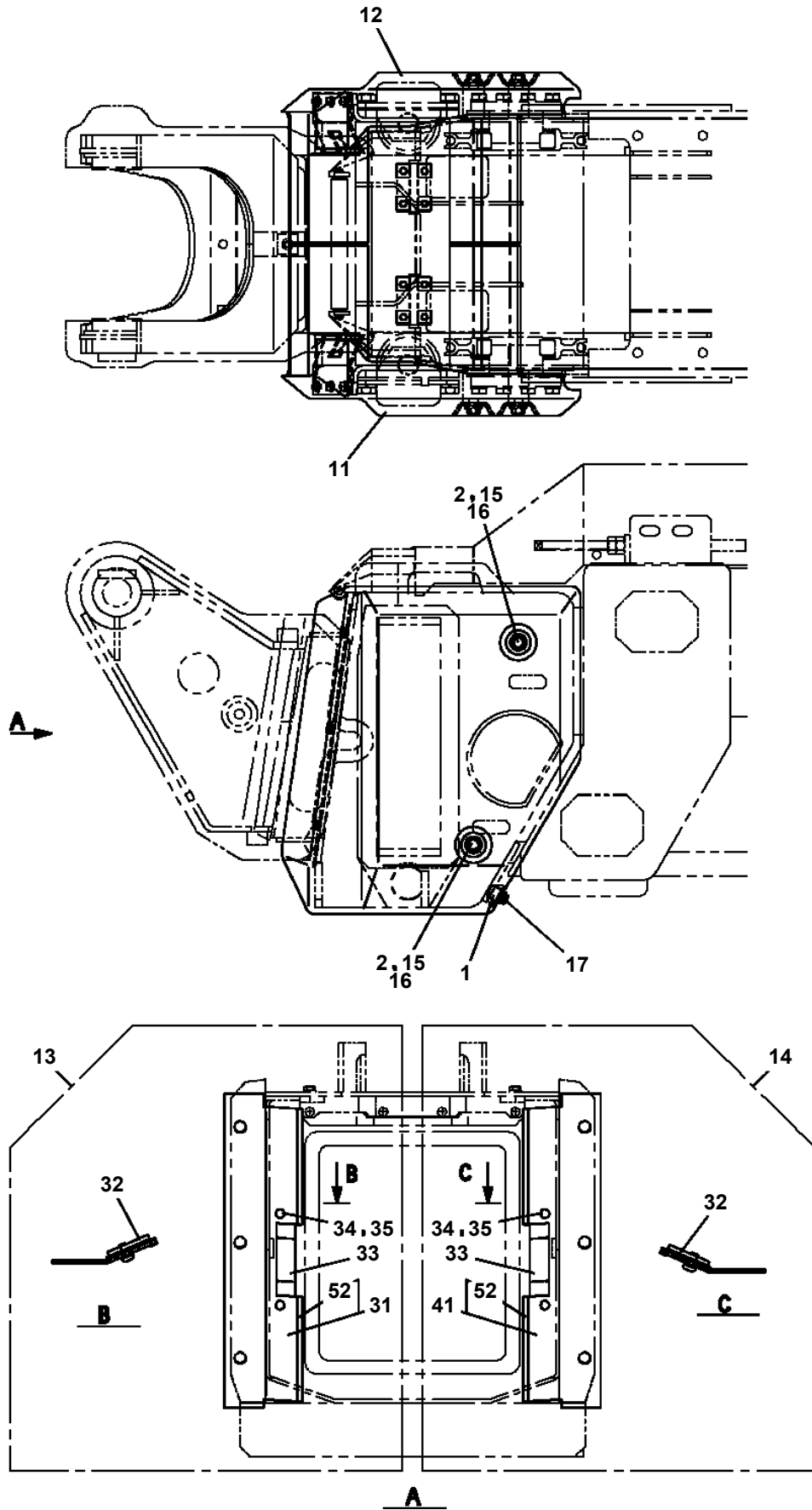
# AT-146-1 4209510072 UPPER

Pos No.	Parts No	Parts Name	Qty	Unit	Technical Data	Serial No (Start)	Serial No (End)	Re
1	42201701000	FRAME (BOOM, TOP)	1					
2	42201632200	BOOM, TOP	1					
3	42201632500	SADDLE	1					
4	42201633000	BOOM, 2ND	1					
5	42201639510	BOOM, BASE	1					
6	37001918580	ROPE, WIRE (KOKOKU)	2		8X5.02M			
	37001918570	ROPE, WIRE (TESAC)	2		8X5.02M			
7	37001918600	ROPE, WIRE (KOKOKU)	2		10X9.415M			
	37001918590	ROPE, WIRE (TESAC)	2		10X9.415M			
9	42201700200	ROLLER ASSY	1					
10	42201700300	ROLLER ASSY	1					
11	42201700010	PLATE	10		T=0.8			
12	90171112030	BOLT	12		M12X30			
13	90302041201	WASHER, SPRING	12		12			
14	37000115380	PIN	1					
15	90238403008	NUT, CASTLE	1		M30X2			
16	80136360050	PIN, SPLIT	1		6X50			
17	90303073001	WASHER, PLAIN	1		30			
18	37000168750	PIN	1					
19	80601110300	RING, RITAINING	2		S30			
20	42201630800	ROLLER ASSY	2					
21	42201630060	PLATE	N		T=0.8			
22	42201630910	PLATE	N		T=1.0			
23	37000155100	PIN	4					
24	90171106012	BOLT	6		M6X12			
25	90302040601	WASHER, SPRING	4		6			
26	42201630010	PIN	2					
27	42200021510	PLATE	2					
28	90171110025	BOLT	8		M10X25			
29	90302041001	WASHER, SPRING	56		10			
30	90171110060	BOLT	4		M10X60			
31	90180210040	BOLT, BUTTON	12		M10X40			
33	90171110016	BOLT	16		M10X16			
35	42201630020	RETAINER	2					
36	37002013550	PLATE, SLIDE	2					
37	90171110014	BOLT	4		M10X14			
38	37000178720	PIN	2					
39	80601110200	RING, RITAINING	4		S20			
40	90171114040	BOLT	12		M14X40			
41	90309341401	WASHER, SPRING	28					
42	37000574840	PLATE	8					
43	82455106000	NIPPLE, GREASE	4		A-M6F FE			
44	82400000459	CAP	2					
45	37002011180	PLATE, SLIDE	4					
46	37000574810	PLATE	N		T=1.0			
47	37000574820	PLATE	N		T=1.0			
48	90172106030	BOLT, HEXAGON SOCKET	16		M6X30			
49	37002011170	PLATE, SLIDE	2					
50	37000508520	PLATE	N		T=0.8			
51	37002006500	PLATE, SLIDE	2					
52	80184306012	SCREW, MACHINE	6		M6X12			
53	37002010340	PLATE, SLIDE	4					
54	37000510800	PLATE	N		T=0.8			
55	37000176290	PIN	1					
56	80602110300	RING, RITAINING	2		R30			
57	37000312680	SPACER	2					
58	42201630400	SHEAVE ASSY	1					
59	31630482500	CAP	4					
60	37001007240	SHEAVE ASSY	2					
61	37000176300	PIN	2					
62	80602110400	RING, RITAINING	2		R40			
63	37000176310	PIN	1					
64	80601110400	RING, RITAINING	2		S40			

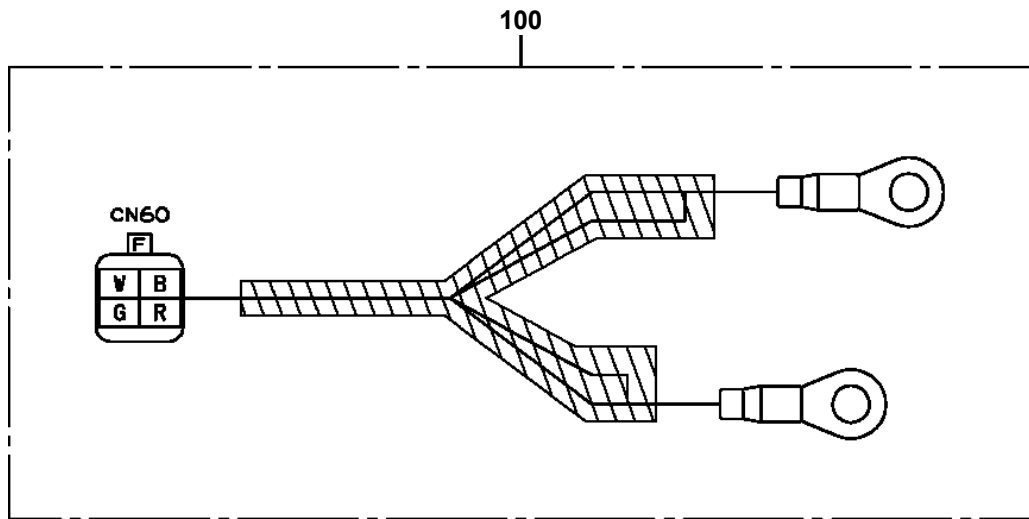
# AT-146-1 42095100072 UPPER

Pos No.	Parts No	Parts Name	Qty	Unit	Technical Data	Serial No (Start)	Serial No (End)
121	37000928200	JOINT	1				
122	80400160129	JOINT	2				
125	80302090241	FITTING	1		KCO18-040N		
126	91002801800	O-RING	1		1B P18		
151	42344971510	SUPPORT	1				
152	42344971520	BLADE	1				
153	42344971530	PLATE	1				
154	90101205016	BOLT	5		M5X16		
155	90201200500	NUT	5		M5		
156	90302040501	WASHER,SPRING	5		5		

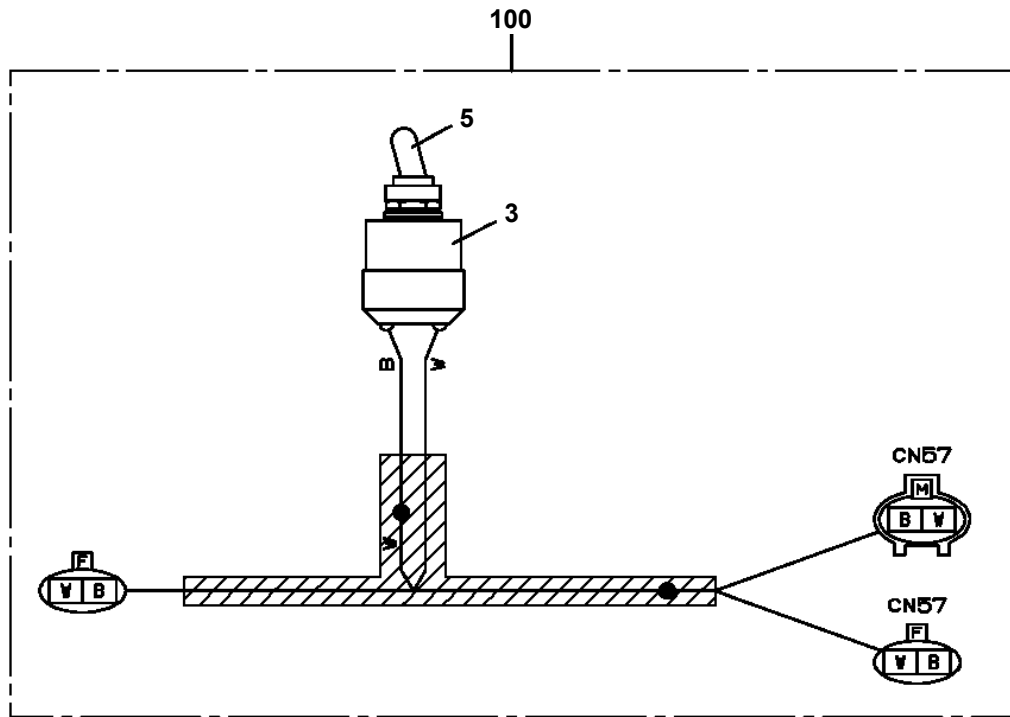
AT-146-1 42095100072 UPPER  
PG1410090-00 COVER,BOOM (2ND BOOM/FRP,BLUE)



AT-146-1 42095100072 UPPER  
PH5031064-00 HARNESS



AT-146-1 42095100072 UPPER  
PH5031797-00 HARNESS



CLICK HERE TO **DOWNLOAD** THE COMPLETE MANUAL

- Thank you very much for reading the preview of the manual.
- You can download the complete manual from: [www.heydownloads.com](http://www.heydownloads.com) by clicking the link below



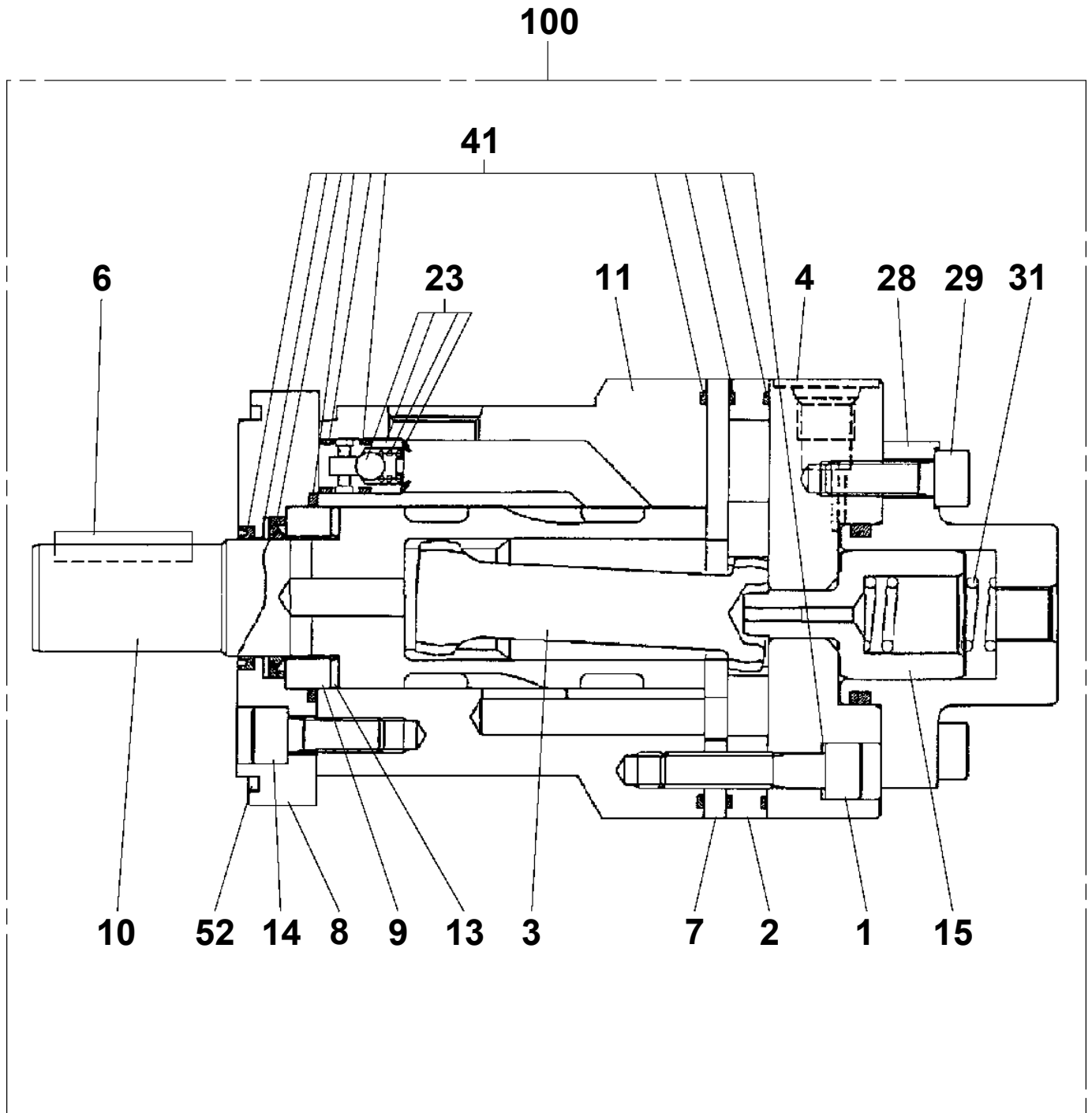
- Please note: If there is no response to CLICKING the link, please download this PDF first and then click on it.

CLICK HERE TO **DOWNLOAD** THE COMPLETE MANUAL

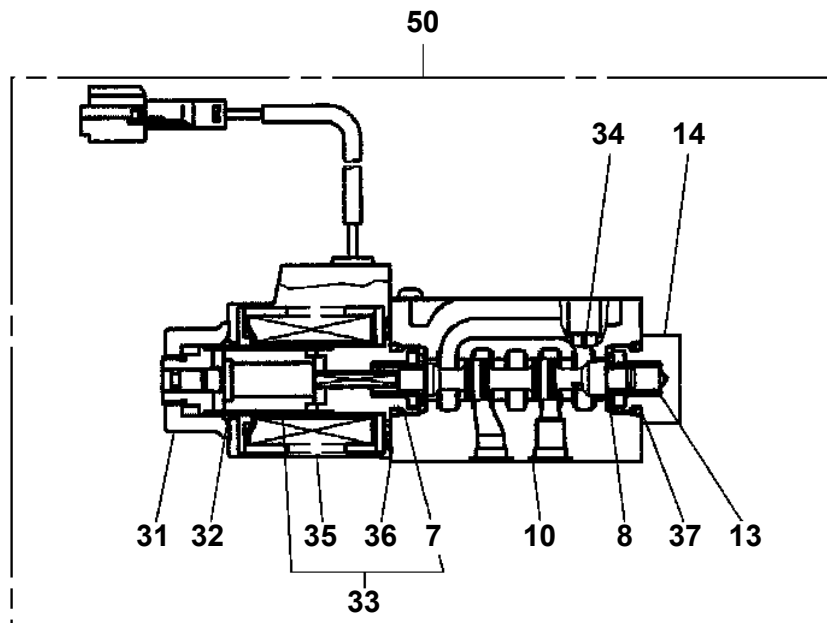
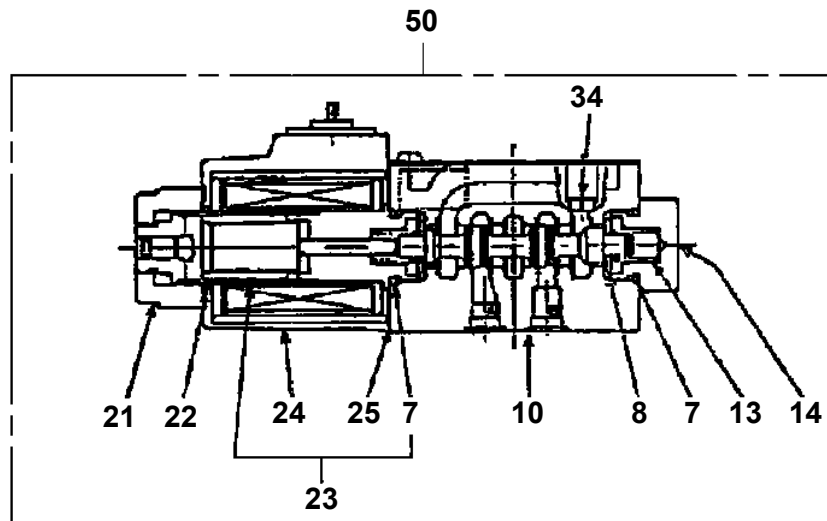
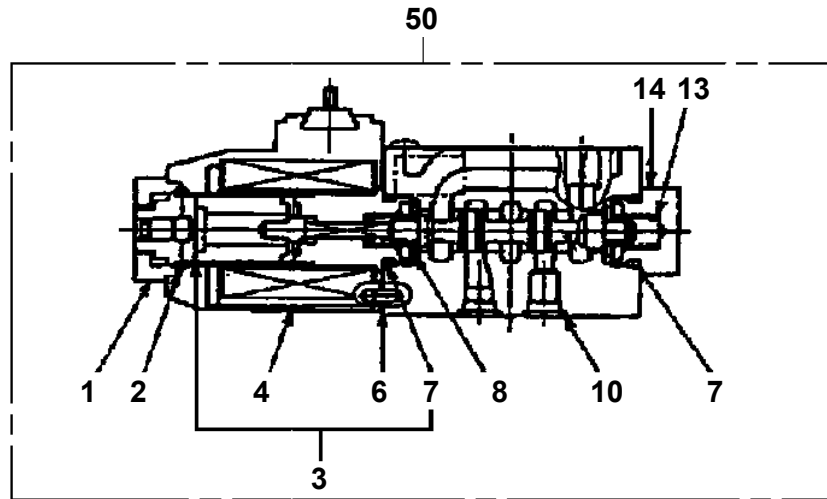
**AT-146-1 42095100072 UPPER  
PH5032328-00 HARNESS**



**AT-146-1 42095100072 UPPER  
PI1010177-00 MOTOR, HYDRAULIC**

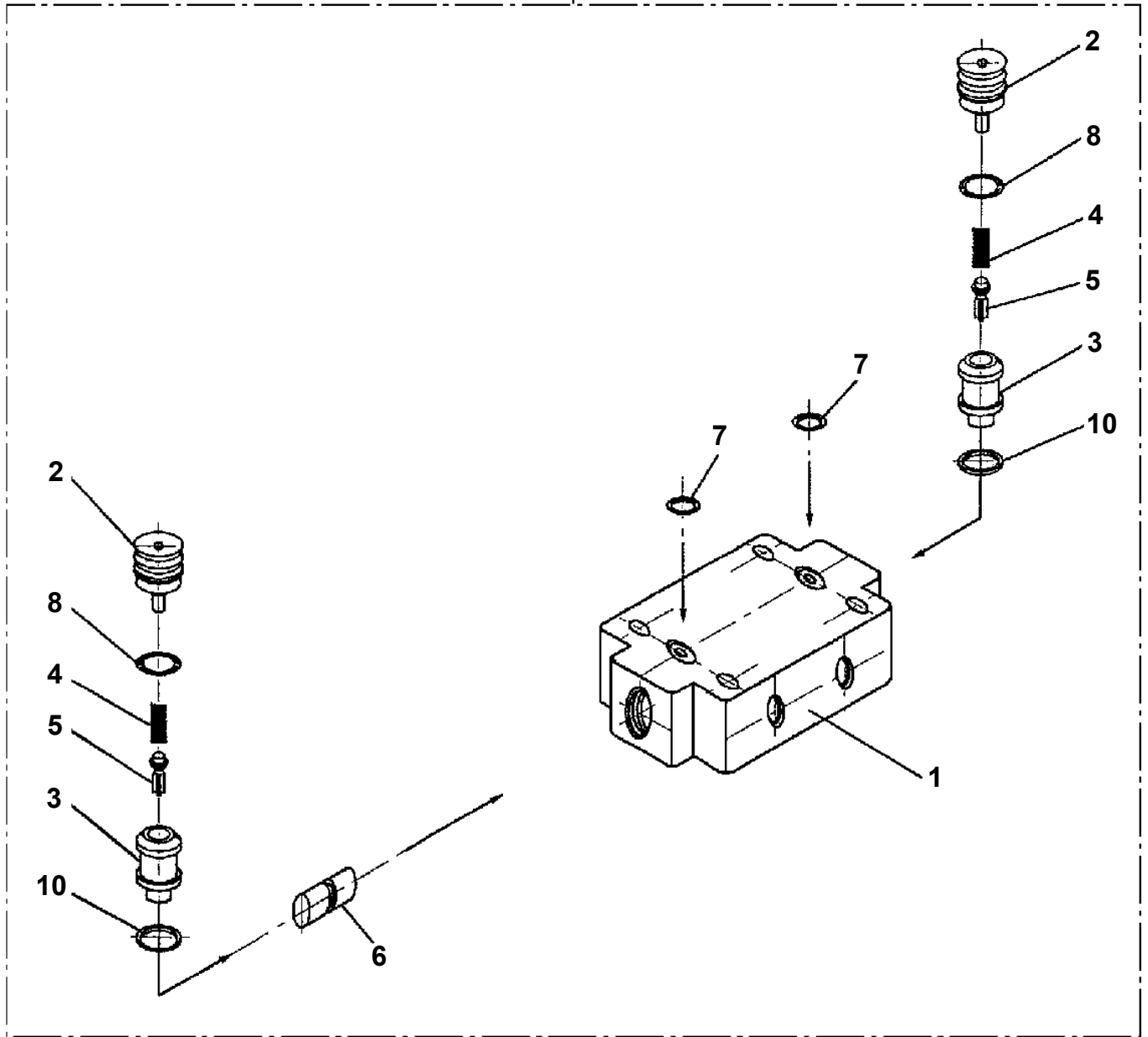


AT-146-1 42095100072 UPPER  
PI1120199-02 VALVE,SOLENOID



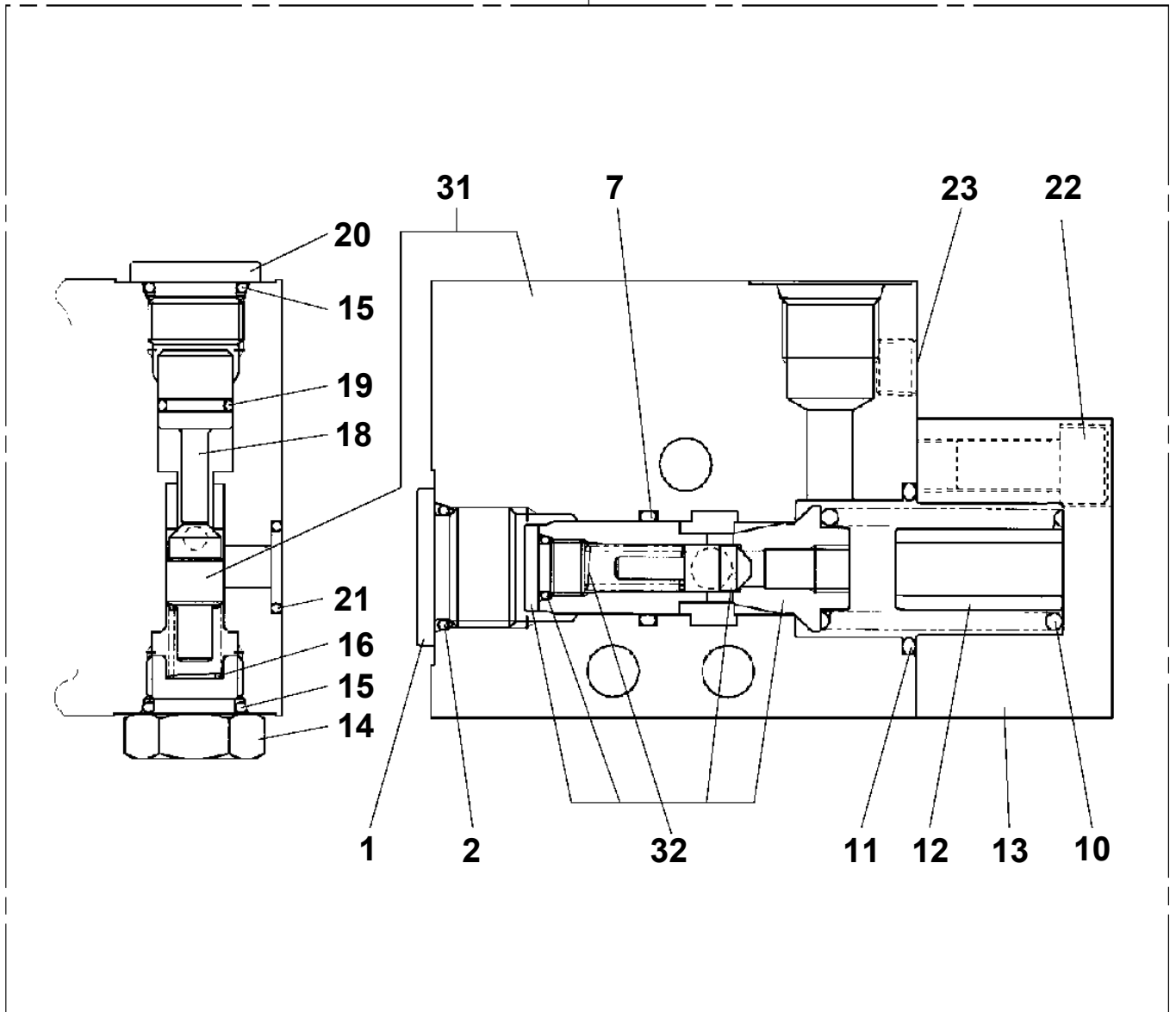
AT-146-1 42095100072 UPPER  
PI1140136-01 VALVE,CHECK

30

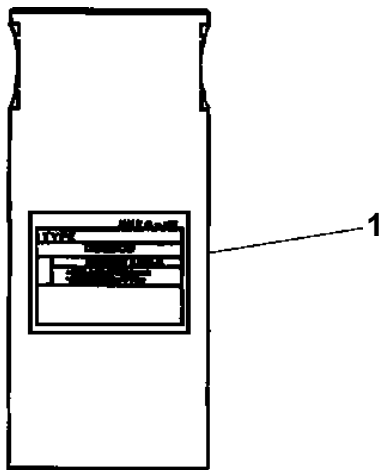


**AT-146-1 42095100072 UPPER  
PI1250137-00 VALVE,COUNTERBALANCE**

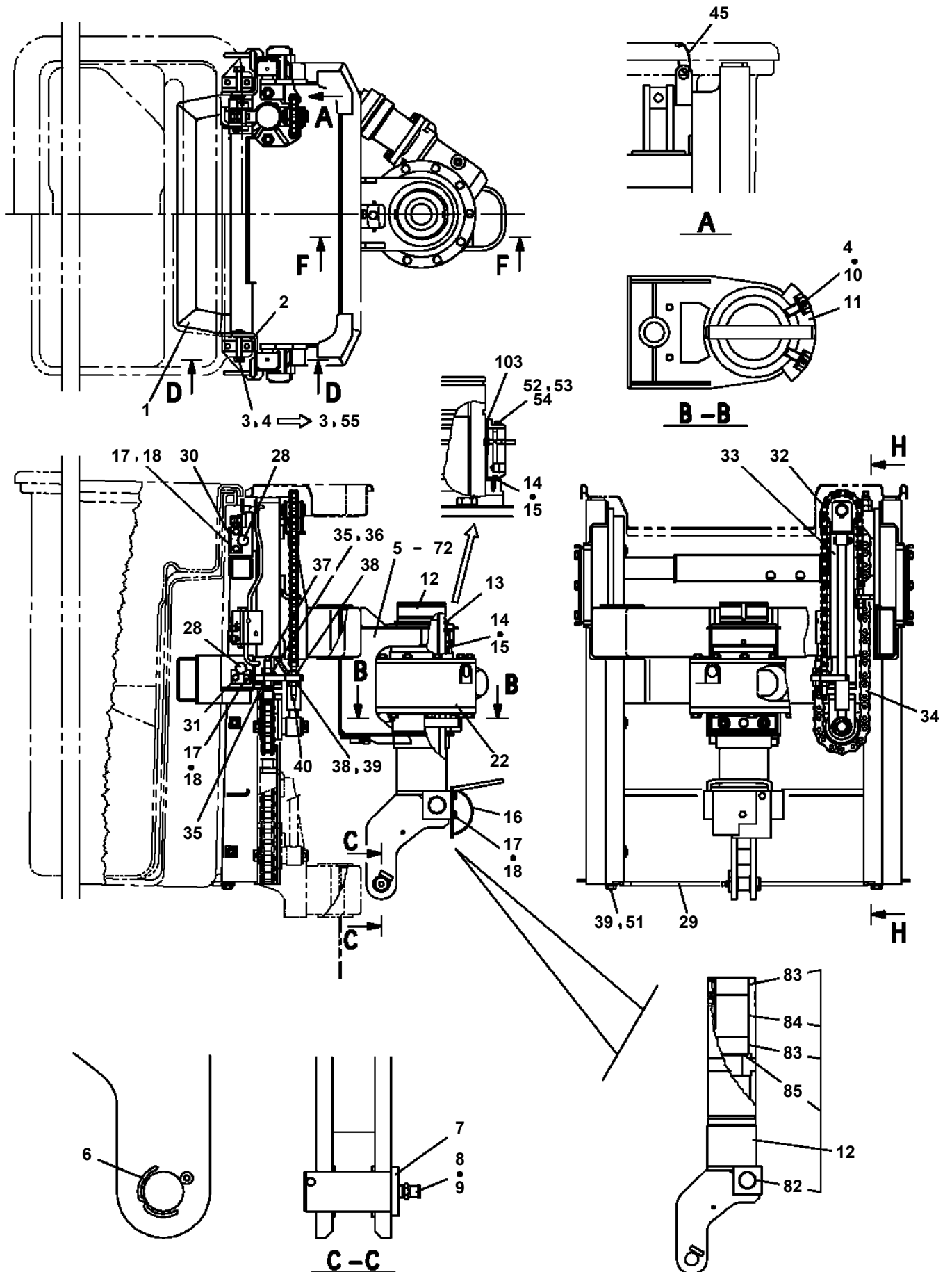
50



**AT-146-1 42095100072 UPPER  
PI1340005-00 ACCUMULATOR**



**AT-146-1 42095100072 UPPER  
PJ3020033-03 FRAME**



# AT-146-1 42095100072 UPPER

Pos No.	Parts No	Parts Name	Qty	Unit	Technical Data	Serial No (Start)	Serial No (End)	Re
111	42345023100	JOINT	1					
112	80491303020	JOINT (WITH O-RING)	4		L,G3/8-G1/4			
113	80491303030	JOINT (WITH O-RING)	1		L,PF3/8-PF3/8			
121	91071011500	O-RING	1		Y22550-115-A			
122	91470000600	RING,BACKUP	1		Y22021-06			

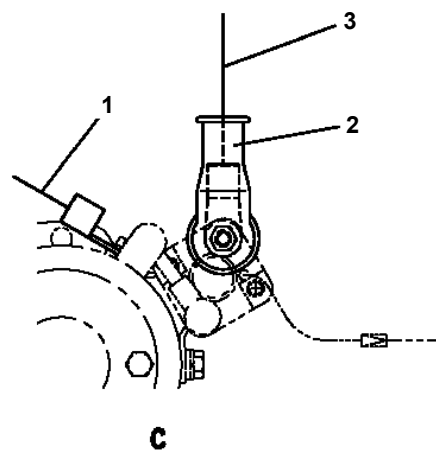
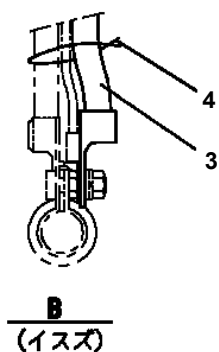
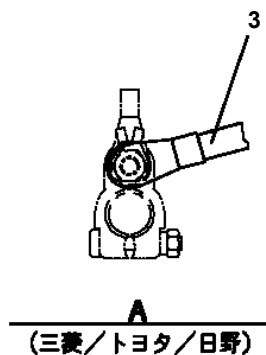
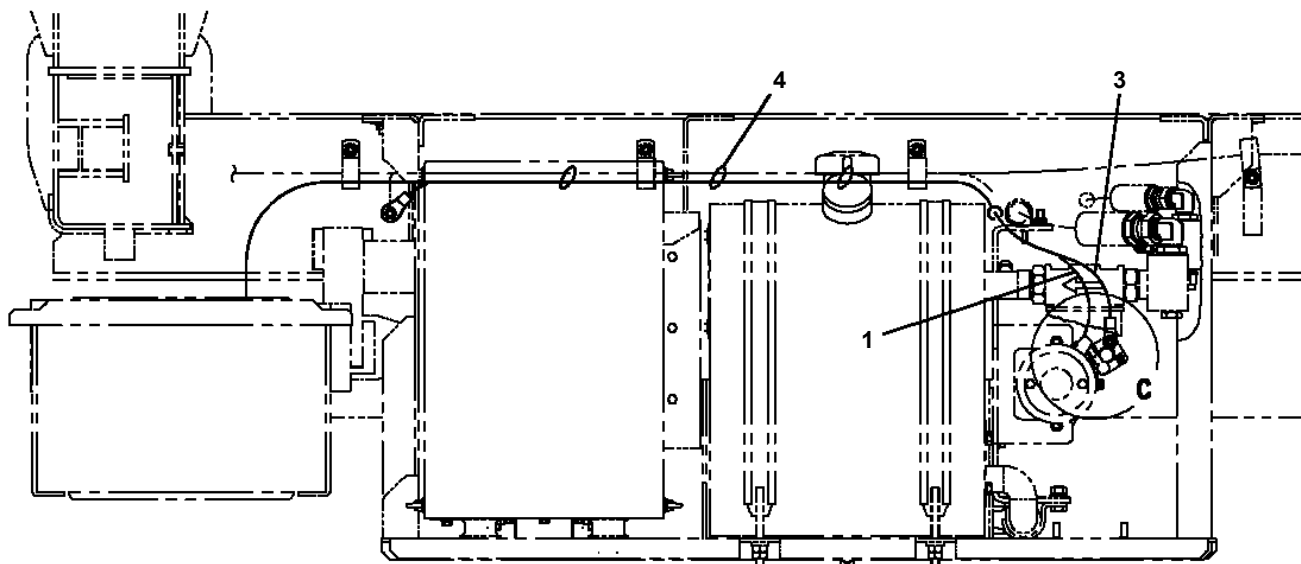
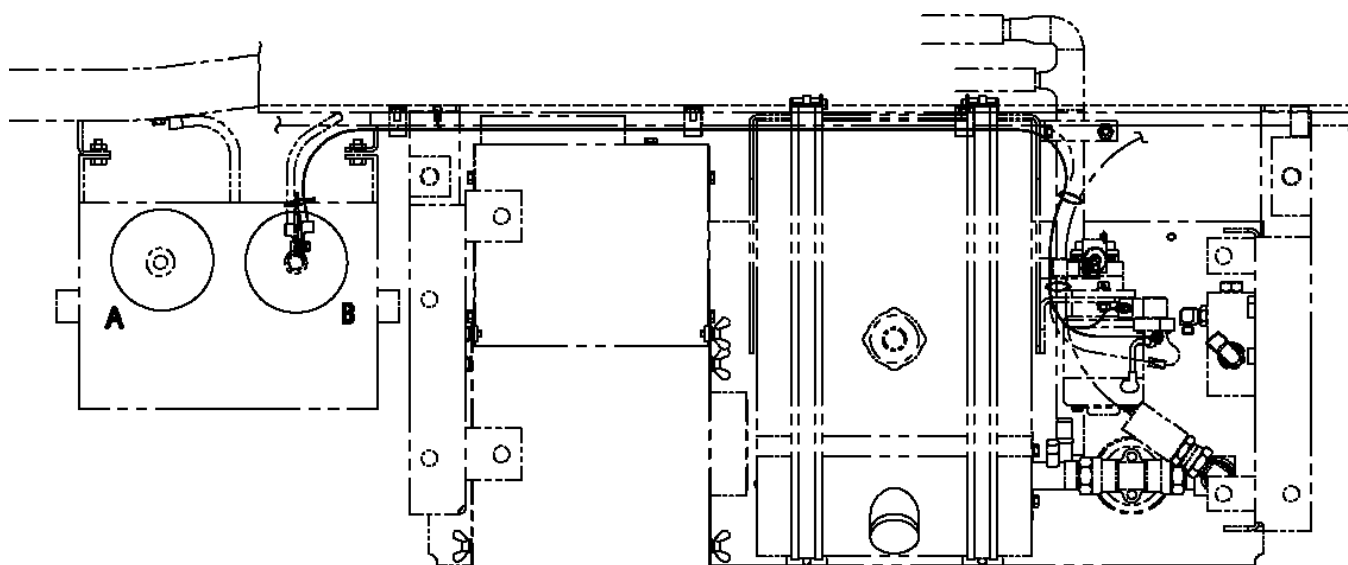
# AT-146-1 4209510072 UPPER

Pos No.	Parts No	Parts Name	Qty	Unit	Technical Data	Serial No (Start)	Serial No (End)	Remarks
2	(*****)	VALVE,PILOT CHECK	1					
3	90172110035	BOLT,HEXAGON SOCKET	2		M10X35			
4	42262163100	LINK ASSY	1					
5	42264514300	SUPPORT	1					
6	37000160220	PIN	1					
7	80601110250	RING,RITAINING	2		S25			
8	90101208035	BOLT	1		M8X35			
9	90302040801	WASHER,SPRING	1		8			
10	90201200800	NUT	1		M8			
11	42264514400	ROD	1					
12	37000178810	PIN	1					
13	42341770300	CHOKE	1					
14	37000308110	SPACER	2					
15	37000312990	SPACER	1					
16	80136363040	PIN,SPLIT	2		6.3X40			
17	42264514100	LINK ASSY	1					
18	90101206012	BOLT	2		M6X12			
19	37002011570	PLATE,SLIDE	1					
31	36052921000	CYLINDER	1					
32	80136340032	PIN,SPLIT	1		4X32			
33	90236401600	NUT,CASTLE	1		M16 H			
34	91684004500	PACKING	2					
35	91001101800	O-RING	1		1A P18			
36	36051004000	PISTON	1					
37	36051002000	COVER,ROD	1					
38	91001204000	O-RING	1		1A G40			
39	91694002500	PACKING	1					
40	36052922000	ROD	1					
41	91660002500	SEAL,DUST	1					
42	80622000250	RING,RITAINING	1		SP25			
51	36051579900	PACKING SET	1					
62	37000401250	BEARING,PLAIN	1					
72	80804025030	BEARING,PLAIN	1					
100	42264514000	CYLINDER,LIFT	1					

# AT-146-1 4209510072 UPPER

Pos No.	Parts No	Parts Name	Qty	Unit	Technical Data	Serial No (Start)	Serial No (End)	Remarks	Pages
1	42331947510	SHAFT	1						
2	42330037771	POTENTIOMETER	3						
3	42331947530	FLANGE	1						
4	42331947540	SLIDER	1						
5	42331947550	SLIDER	1						
6	42331947560	SPRING	2						
7	42331947570	BUSHING	1						
8	42331947580	FRAME	1						
9	42331947590	PLATE	2						
10	42331947600	ARM	2						
11	42331947610	LEVER	4						
12	42331947620	ARM	2						
13	42331947630	BEARING	1						
14	42331947640	BEARING	1						
15	42331947650	BEARING	1						
16	42331947660	LEVER	2						
17	42331947670	PLATE	1						
18	42331947680	PLATE	2						
19	42331947690	HOLDER	3						
20	42331947700	SHAFT	2						
21	42331947710	SPACER	4						
22	42331947720	CLAMP	2						
23	42331947730	CLAMP	1						
25	42331947750	SPACER	2						
26	42331947760	SPACER	2						
27	42331947770	SPACER	1						
28	42331947780	PIN	1						
29	42331947790	STOPPER	1						
30	42331947800	LEVER	1						
31	42331947810	LEVER	1						
32	42331947820	BOX	1						
33	42331247660	BOARD	1						
35	42331947830	PLATE	3						
36	42331947840	PLATE	1						
37	42331947850	WASHER,PLAIN	2						
38	42331947860	GRIP	1						
39	42331947870	CAP	1						
40	42331947880	SHAFT	1						
41	42331947890	SHIM	1						
42	42331947900	GRIP	1						
43	42331947910	CUSHION	1						
44	42331247720	SWITCH,LEAD	3						
45	42331947930	SHIM	3						
46	91001100300	O-RING	1		1A P3				
47	91001101600	O-RING	1		1A P16				
48	91001204000	O-RING	1		1A G40				
49	42331947950	SPRING	1						
61	42331947940	BOOT ASSY	1						
100	42331942000	LEVER,CONTROL	1						

**AT-146-1 42095100072 UPPER  
PN1013152-00 ELEC.ASSY (EMERGENCY PUMP)**



# AT-146-1 4209510072 UPPER

Pos No.	Parts No	Parts Name	Qty	Unit	Technical Data	Serial No (Start)	Serial No
1	42652901000	HARNESS (MAIN)	1				
2	42651890300	HARNESS (FOR DETECTOR,O/R LENGTH)	1				
3	82100002002	CLAMP	2		WR6		
	90302041201	WASHER,SPRING	1		12		
4	37000159530	PIN	1				
	91810132530	FASTENER	30				
5	80182406014	SCREW,MACHINE	2		M6X14		
	80620210160	PIN,SNAP	1				
6	42652491000	RELAY ASSY (FRAME)	1				
7	90101210014	BOLT	4		M10X14		
8	90302041001	WASHER,SPRING	4		10		
9	82104503104	SWITCH,LIMIT	1				
10	90172105014	BOLT,HEXAGON SOCKET	2		M5X14		
11	44430680200	BUZZER ASSY (WITH HARNESS)	1				
12	42474530100	LAMP ASSY	1				
13	90302040601	WASHER,SPRING	17		6		
14	44320516500	PLUG (12 POLES,FEMALE)	1				
15	42352970010	PLUG (14 POLES,FEMALE)	1				
16	90201200800	NUT	1		M8		
17	90302040801	WASHER,SPRING	1		8		
18	91850400601	CLAMP	36				
19	42350980010	PLUG (6POLES,FEMALE)	1				
20	91810130240	FASTENER	30				
21	42652801000	PANEL,CONTROL	1				
22	80192486014	SCREW,MACHINE (WITH WASHER)	4		M6X14		
23	90172206035	BOLT,HEXAGON SOCKET	4		M6X35		
24	90813108020	BOLT,WING	1		M8X20		
25	90172106016	BOLT,HEXAGON SOCKET	12		M6X16		
26	36131690000	DETECTOR,OUTRIGGER LENGTH	4				
29	90280200600	NUT,FLANGE	3		M6		
30	80136320012	PIN,SPLIT	4		2X12		
31	90303070601	WASHER,PLAIN	8		6		
36	82100002016	CLAMP	2		WR25		
37	90201200600	NUT	1		M6		
38	82100002019	CLAMP	1		WR40		
52	34351562510	BOX,FUSE	1				
53	82100001841	FUSE	3		20A,YELLOW		
55	82100001839	FUSE	9		10A.RED		
58	82161202010	RELAY	2				
62	82100001836	FUSE	1		3A		
65	82100001840	FUSE	1		15A,BLUE		
67	82182809623	DIODE	1				
74	44960012000	BUZZER ASSY	1				
81	82165904020	LAMP	1		24V 60W		
82	90101212020	BOLT	1		M12X20		
83	90302041201	WASHER,SPRING	1		12		
84	37000159530	PIN	1				
85	80620210160	PIN,SNAP	1				
91	42736070100	SWITCH ASSY (WITH HARNESS)	1				
92	42433932100	SWITCH ASSY (WITH HARNESS,1 SW)	1				
93	42652802000	INDICATOR,OUTRIGGER	1				
94	80192486014	SCREW,MACHINE (WITH WASHER)	4		M6X14		
95	90302040601	WASHER,SPRING	4		6		
96	90201200600	NUT	4		M6		
97	42651941100	PANEL	1				
98	82197518114	CAP (MATSUSHITA/BLACK)	2				
	82197518119	CAP (PLUS ONE MFG./BLACK)	2				
113	90101208020	BOLT	8		M8X20		
114	90302040801	WASHER,SPRING	8		8		
115	90303070801	WASHER,PLAIN	8		8		
116	82104501140	SWITCH,LIMIT	4				
117	42651710350	SUPPORT	4				
121	42651893100	COVER	2				

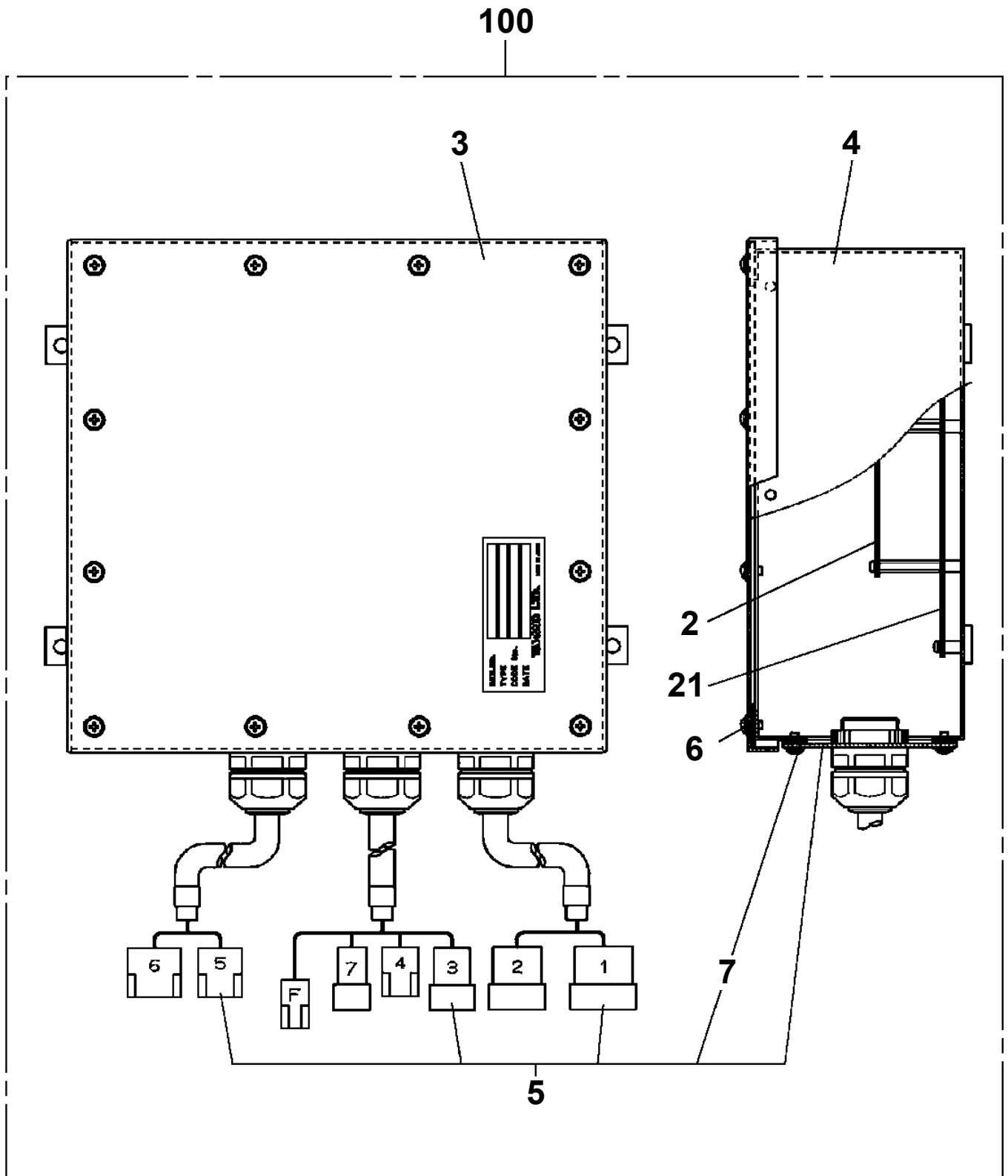
# AT-146-1 4209510072 UPPER

Pos No.	Parts No	Parts Name	Qty	Unit	Technical Data	Serial No (Start)	Serial No (End)	Remarks	Pages
2	90101208012	BOLT	4		M8X12				
3	90302040801	WASHER,SPRING	4		8				
22	42433401300	LAMP	1				228103		
31	42353332100	SUPPORT	1						
32	42737850100	GUARD	1						
33	90101206018	BOLT	4		M6X18		228117		
	90101206025	BOLT	4		M6X25	228104	228132		
34	90201200600	NUT	4		M6		227547		
35	90302040601	WASHER,SPRING	4		6				
37	42502030100	SUPPORT	1			228104	228132		
51	82100002550	BULB,LAMP	1		24V 20W		228103		
66	42433401301	LAMP	1			228104	228132		
73	90101206030	BOLT	4		M6X30	228133			
76	42433401302	LAMP	1			228133			
77	42502980100	SUPPORT	1			228133			
78	37000306130	SPACER	2		L=8	228133			
79	37000302980	SPACER	2		L=10	228133			
102	42353332000	LAMP ASSY	1				228103		
103	42353332001	LAMP ASSY	1			228104	228132		
104	42353332002	LAMP ASSY	1			228133			

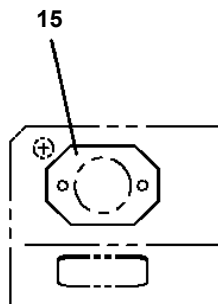
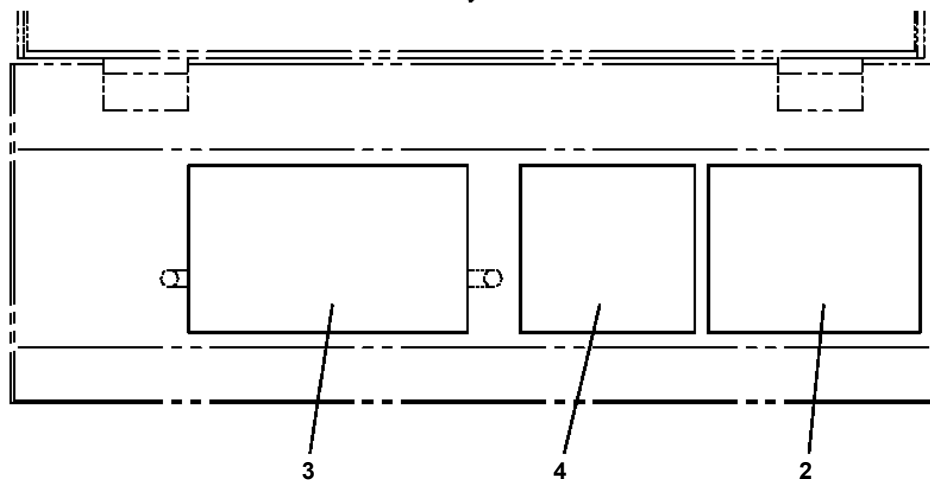
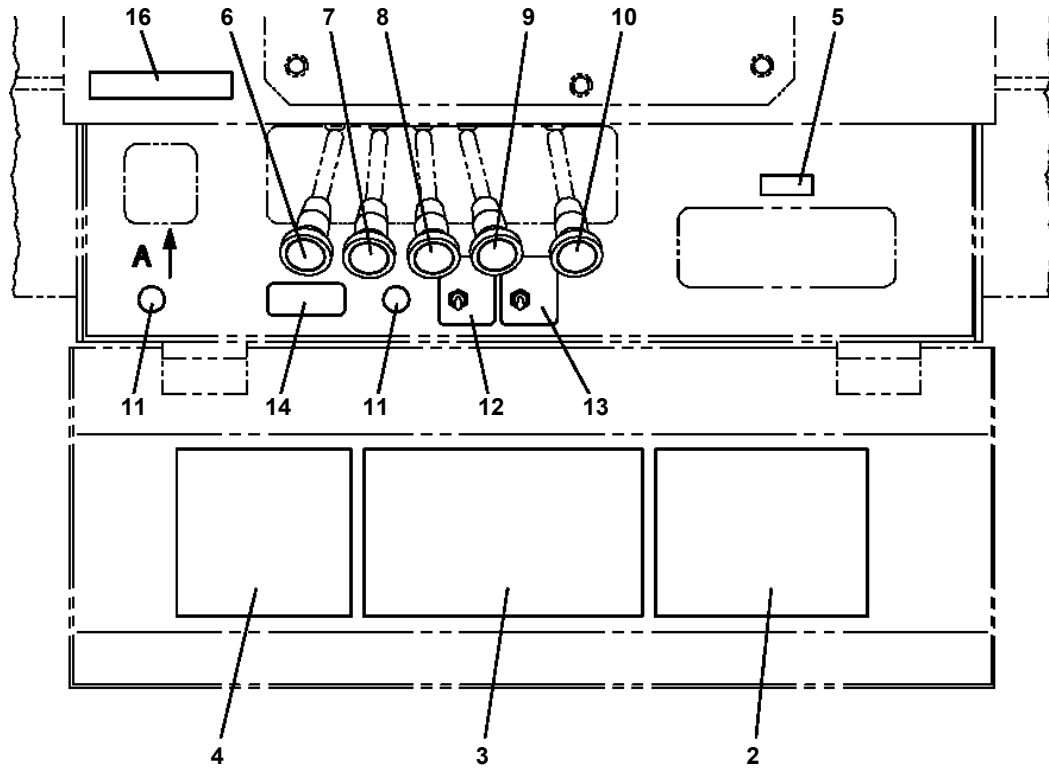
# AT-146-1 4209510072 UPPER

Pos No.	Parts No	Parts Name	Qty	Unit	Technical Data	Serial No (Start)	Serial No (End)	Remarks	P
1	42652411100	CASE	1						
2	42652411200	COVER	1						
3	80182306014	SCREW,MACHINE	8		M6X14				
4	90302040601	WASHER,SPRING	22		6				
5	90303070601	WASHER,PLAIN	10		6				
6	42651091100	RELAY ASSY	2						
7	90101206014	BOLT	11		M6X14				
8	82100002596	RELAY	9						
9	82161201010	RELAY	4						
10	82100002597	RELAY	2						
11	42651891300	TERMINAL ASSY	1						
12	80172303016	SCREW,MACHINE	4		M3X16				
13	90302040301	WASHER,SPRING	14		3				
14	90303070301	WASHER,PLAIN	14		3				
15	80172303008	SCREW,MACHINE	6		M3X8				
16	42651132400	RELAY ASSY	1						
17	82100002014	CLAMP	1		WR20				
18	90201200600	NUT	1		M6				
19	42735530100	FLASHER UNIT	1						
20	42651942100	RESISTANCE	1						
21	82161153030	RELAY	2						
22	82100002644	SUPPORT	4		PYC-A1				
23	82100002646	SOCKET	2						
24	80172303012	SCREW,MACHINE	4		M3X12				
25	42652131100	SUPPORT	1						
26	80172306012	SCREW,MACHINE	2		M6X12				
27	42652131301	CONTROLLER	1						
28	80172304010	SCREW,MACHINE	4		M4X10				
29	90302040401	WASHER,SPRING	4		4				
30	90303070401	WASHER,PLAIN	4		4				
51	34350003500	RELAY	2						
63	82100000638	DIODE	5						
71	34350003400	RELAY	1						
100	42652491000	RELAY ASSY (FRAME)	1						

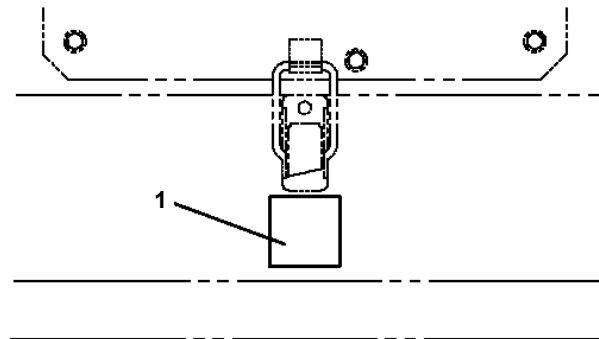
AT-146-1 42095100072 UPPER  
PN1210130-00 TRANSMITTER, SIGNAL



**AT-146-1 42095100072 UPPER**  
**PO1013871-01 PLATE ASSY,NAME (OUTRIGGER CONTROL)**

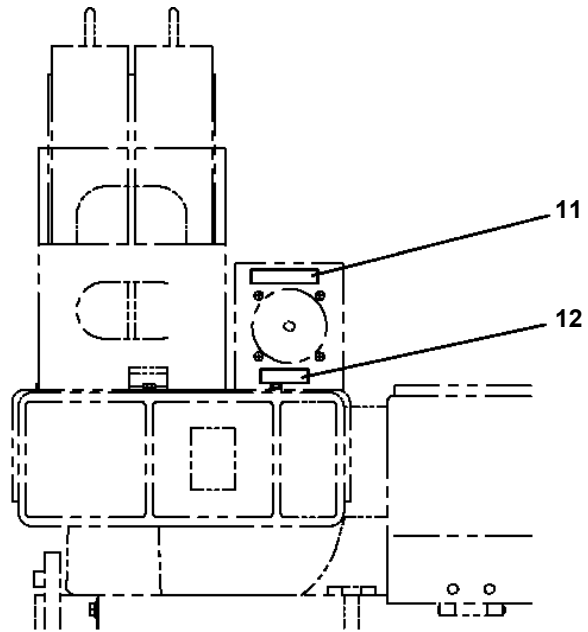


**A**

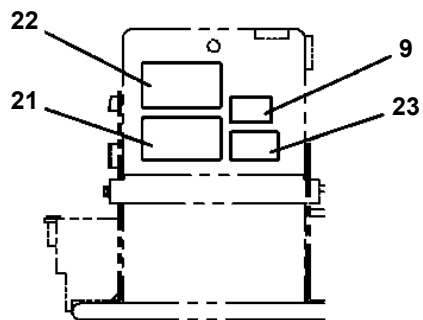


**屏上面**

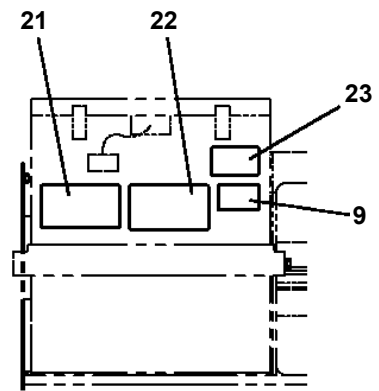
**AT-146-1 42095100072 UPPER  
PO1013899-00 PLATE ASSY,NAME (MOTOR UNIT)**



**D**

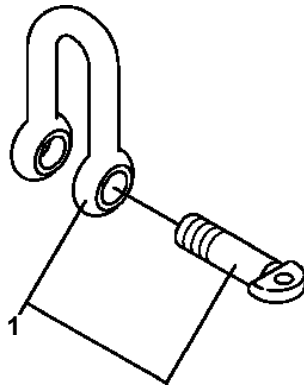


**E**



**F**

**AT-146-1 42095100072 UPPER  
PS5150001-00 SHACKLE**



# AT-146-1 42095100072 UPPER

Pos No.	Parts No	Parts Name	Qty	Unit	Technical Data	Serial No (Start)	Serial No (End)
1	42470341000	ACCESSORIES (BUCKET INNER MAT)	1				

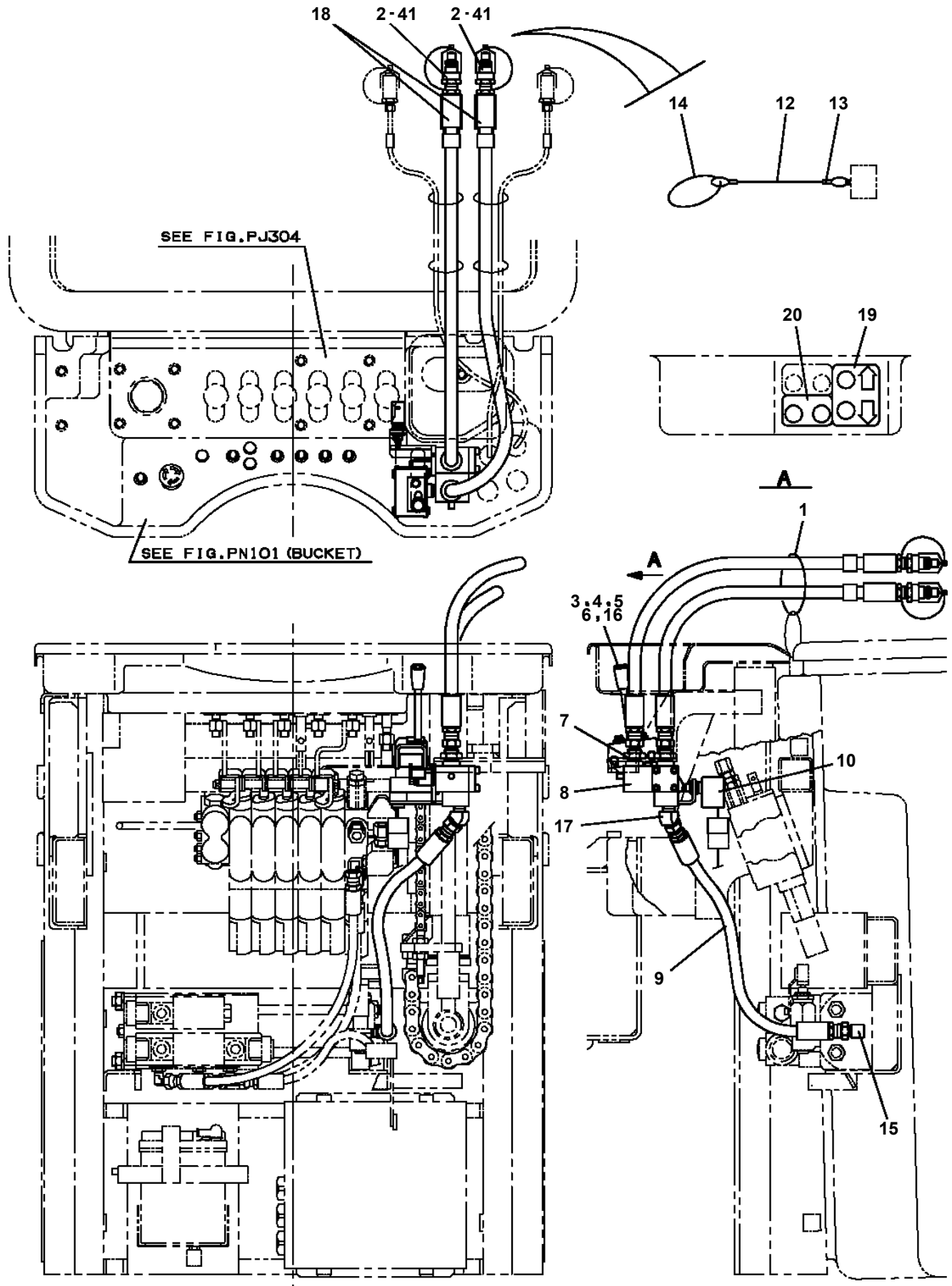
# AT-146-1 42095100072 UPPER

Pos No.	Parts No	Parts Name	Qty	Unit	Technical Data	Serial No (Start)	Serial No (End)	Remarks	Pag
1	42311524100	SUPPORT	1						
2	90190208016	BOLT	2		M8X16				
3	90302510801	WASHER,SPRING (8)	2						
4	42311524200	SUPPORT	1						
5	90101208025	BOLT	2		M8X25				
6	90201200800	NUT	2		M8				
7	90302040801	WASHER,SPRING	2		8				
8	90303070801	WASHER,PLAIN	4		8				

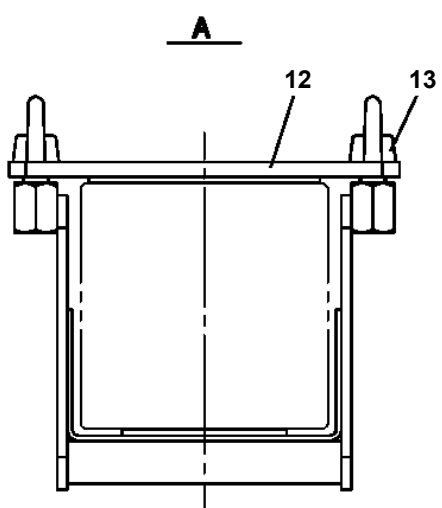
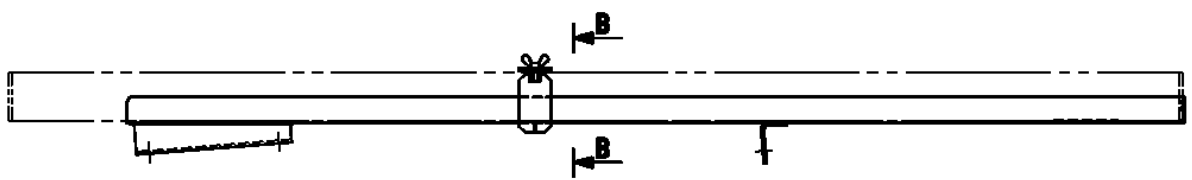
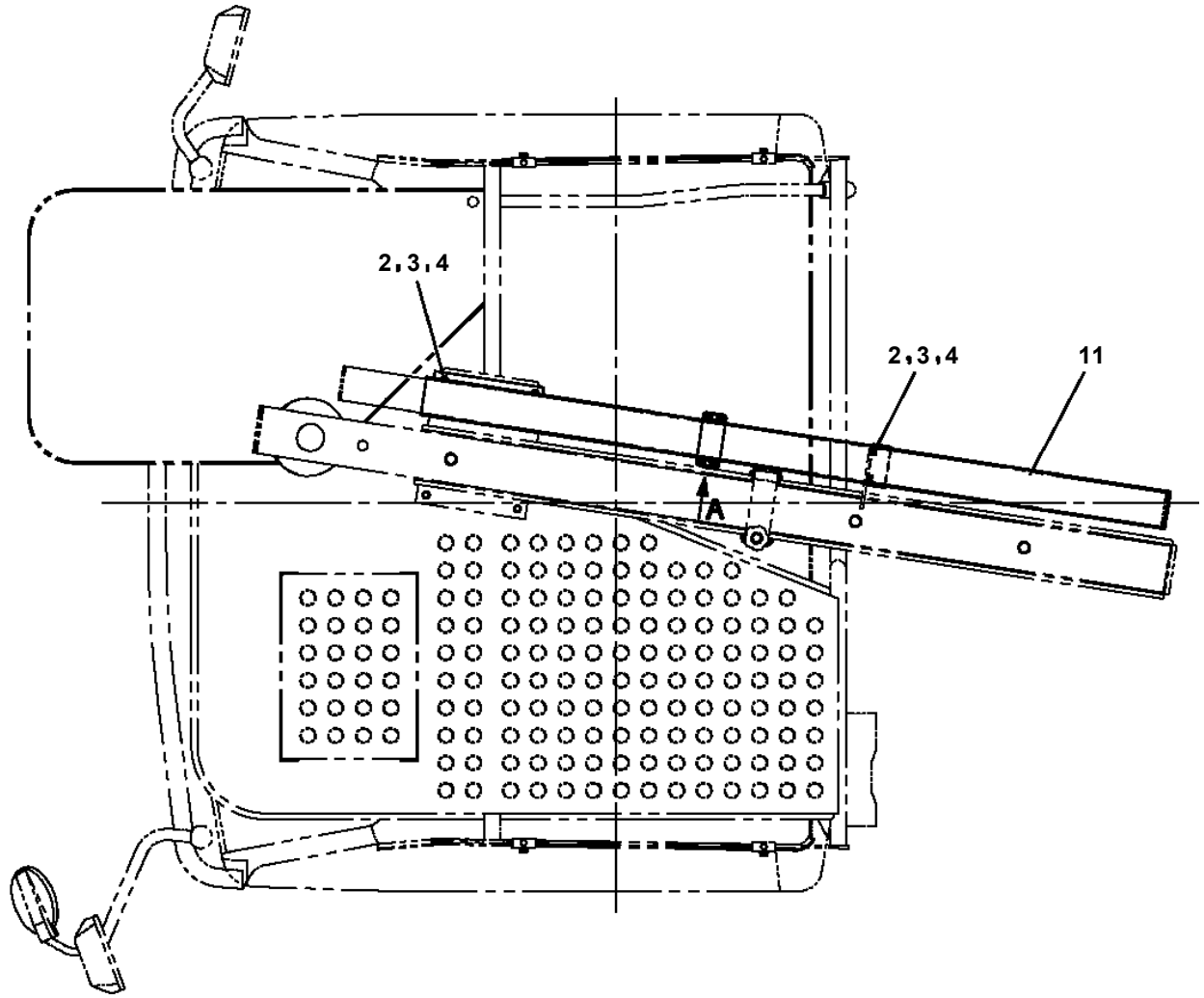
# AT-146-1 42095100072 UPPER

Pos No.	Parts No	Parts Name	Qty	Unit	Technical Data	Serial No (Start)	Serial No (End)
1	42470330000	ROPE (SAFETY,YELLOW:TD-TYPE)	1				

**AT-146-1 42095100072 UPPER  
PY1160091-00 BOOSTER (PIPING/AIR&ELEC.SELECT.)**



AT-146-1 42095100072 UPPER  
PY1550015-00 TOOL SUPPORT



**B - B**

CLICK HERE TO **DOWNLOAD** THE COMPLETE MANUAL

- Thank you very much for reading the preview of the manual.
- You can download the complete manual from: [www.heydownloads.com](http://www.heydownloads.com) by clicking the link below



- Please note: If there is no response to CLICKING the link, please download this PDF first and then click on it.

CLICK HERE TO **DOWNLOAD** THE COMPLETE MANUAL