

AT-146-1 42095100058 UPPER

PD2000051-00 SWING UNIT
PF1000471-01 WINCH SYSTEM
PG2000059-00 BOOM UNIT
PH1000399-00 SAFETY DEVICES
PJ3000247-00 BUCKET SYSTEM
PJ5000003-00 BOOSTER UNIT
PK2000243-00 FRAME UNIT
PO1000131-03 INDICATION PLATES
PY1000670-01 OPTIONS,1
PY2000033-00 OPTIONS,2
ASSEMBLY

CLICK HERE TO **DOWNLOAD** THE COMPLETE MANUAL

- Thank you very much for reading the preview of the manual.
- You can download the complete manual from: www.heydownloads.com by clicking the link below



- Please note: If there is no response to CLICKING the link, please download this PDF first and then click on it.

CLICK HERE TO **DOWNLOAD** THE COMPLETE MANUAL

AT-146-1 42095100058 UPPER

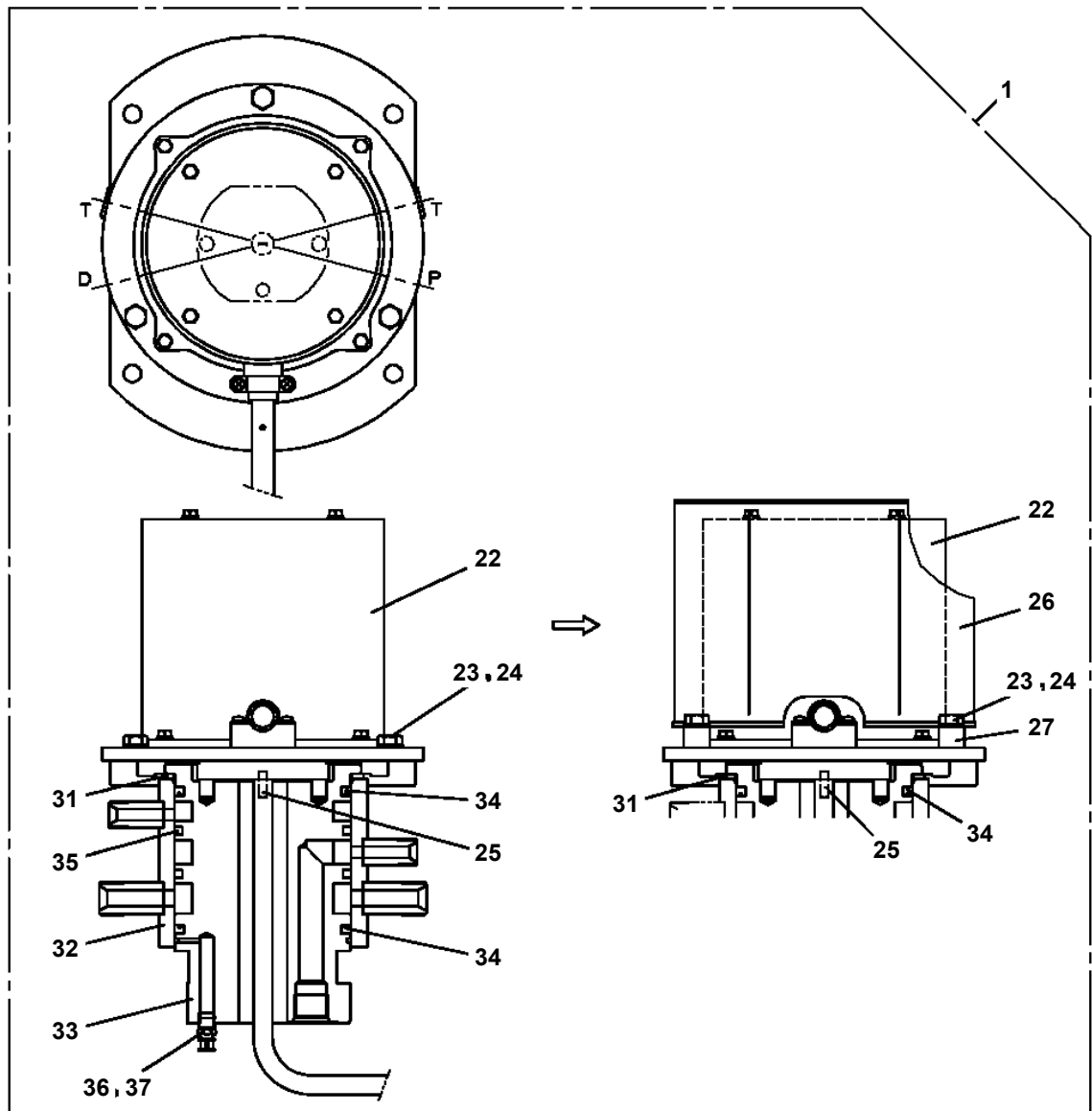
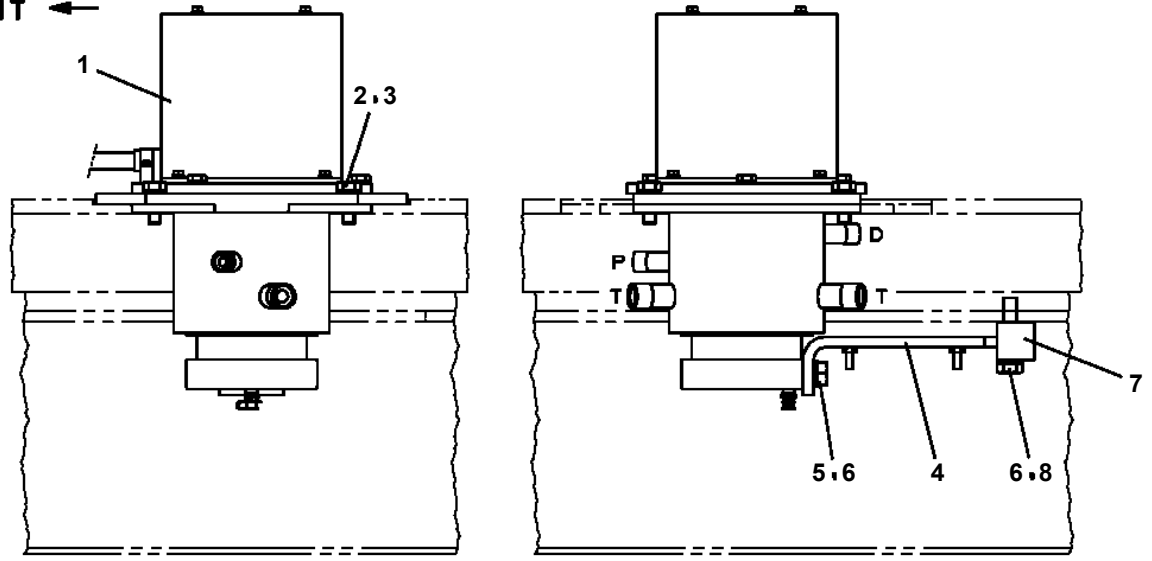
Pos No.	Parts No	Parts Name	Qty	Unit	Technical Data	Serial No (Start)	Serial No (End)
1	(*****)	FRAME	1				
	(*****)	FRAME	1				
2	(*****)	PIPING (BUCKET)	1				
3	(*****)	ELEC.ASSY (BUCKET)	1				
4	(*****)	OPE.ASSY	1				
5	(*****)	LAMP	1				
6	(*****)	PIPING,GREASE (BUCKET)	1				
11	(*****)	BUCKET	1				
12	(*****)	BUCKET (INNER CASE)	1				
13	(*****)	COVER (FRP,GRAY)	1				
	(*****)	COVER (FRP,GRAY)	1				
14	(*****)	COVER,BOOM (TOP/FRP,GRAY)	1				
15	42264823000	COVER (CLOTH,GRAY)	1				
16	42470341000	ACCESSORIES (BUCKET INNER MAT)	1				

AT-146-1 42095100058 UPPER

Pos No.	Parts No	Parts Name	Qty	Unit	Technical Data	Serial No (Start)	Serial No
1	(*****)	ARM	1				
2	42474540000	HANGER (FOR BUCKET,FRP)	2				
3	42474030000	STEP,BUCKET (GRAY,FOR BUCKET INNER)	1				
4	42470330000	ROPE (SAFETY,YELLOW:TD-TYPE)	2				
5	42472530000	BOX,TOOL (FOR BUCKET)	1				
6	(*****)	HOSE,BOOSTER (WITH AIR BALLOON)	2				
7	42470365000	CLAMP HEAD (SANWA,12TON,TITANIUM)	1				

**AT-146-1 42095100058 UPPER
PB1300360-01 JOINT, ROTARY**

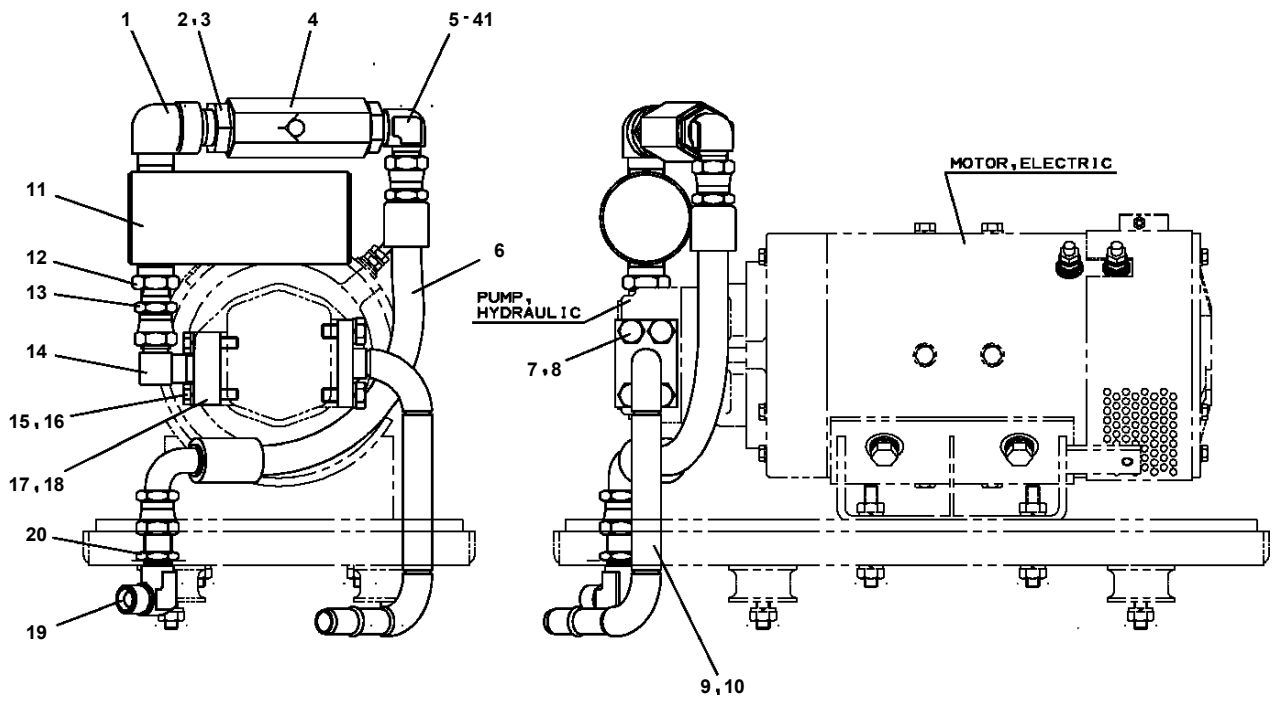
FRONT ←



AT-146-1 4209510058 UPPER

Pos No.	Parts No	Parts Name	Qty	Unit	Technical Data	Serial No (Start)	Serial No (End)
2	36634515010	PLUG ASSY	1				
3	11625101020	BOLT,STUD	4				
4	36637855010	VALVE,CONTROL	1				
5	36637855020	VALVE,CONTROL	1				
6	36636435020	VALVE,CONTROL (WINCH)	1				
7	36636435030	VALVE,CONTROL (JIB ELEVATING)	1				
8	36636435040	VALVE,CONTROL (JIB SWING)	1				
9	36636435050	VALVE,CONTROL (ATTACHMENT)	1				
10	36634365090	VALVE,RELIEF	1				
24	91002905500	O-RING	7		1B G55		
32	91000501500	O-RING	1		AS568-015		
33	91002802200	O-RING	1		1B P22		
44	36631975010	O-RING	4				
45	36634365190	WIPER,DUST	12				
46	36634365200	RETAINER (SEAL)	12				
47	36636435060	VALVE,CHECK	5				
48	36635555080	SPRING	5				
49	36635045040	RETAINER (VALVE)	6				
50	91002801400	O-RING	6		1B P14		
51	12435101180	RETAINER (SEAL)	11				
52	36636435070	END,SPOOL	5				
53	12435101170	RETAINER (SPRING)	10				
54	36630045140	SPRING	5				
55	36636435080	COVER (SPRING)	2				
56	36635535150	SWITCH,PUSH	4				
57	36630045150	COVER	2				
58	90131906015	BOLT,HEXAGON SOCKET	2		M6X15		
59	90131906020	BOLT,HEXAGON SOCKET	4		M6X20		
60	90131904015	BOLT,HEXAGON SOCKET	4		M4X15		
61	90303100401	WASHER,PLAIN	5		4		
63	80172304008	SCREW,MACHINE	1		M4X8		
64	36637625030	TIE (MOUNT)	1				
65	36637625040	INSULOCK (TIE)	1				
71	36636435090	SHIM (T=0.3)	6				
72	36636435100	SHIM (T=0.5)	6				
73	36636435110	SHIM (T=0.7)	6				
85	36636435120	COVER (SPRING)	4				
87	90131906010	BOLT,HEXAGON SOCKET	2		M6X10		
94	36643175030	O-RING	8		P13		
109	90131506020	BOLT,HEXAGON SOCKET	6		M6X20		
110	90131504015	BOLT,HEXAGON SOCKET	8		M4X15		
111	90303070401	WASHER,PLAIN	9		4		
125	90131506010	BOLT,HEXAGON SOCKET	6		M6X10		
131	36636415040	SWITCH,LEAD (WINCH)	2				
141	36636435150	SWITCH,LEAD (WITH CONNECTOR)	2				
158	90131506015	BOLT,HEXAGON SOCKET	2		M6X15		
163	80185804008	SCREW,MACHINE	1		M4X8		
164	36636435170	FASTENER	1				
165	36636435180	TIE (INSULOCK)	1				
172	13115102010	RETAINER (SEAL)	2				
173	36636435140	END,SPOOL	1				
174	80560005000	BALL,STEEL	2		5		
175	13115102030	CASE (BALL)	1				
176	13115102050	RETAINER (BALL)	1				
177	13115102040	SPRING	1				
181	90131506025	BOLT,HEXAGON SOCKET	2		M6X25		
195	91001101001	O-RING	1		1A P10A		
196	36634365100	RING,BACKUP	1				
197	19215101010	O-RING	2				
203	91001001600	O-RING	2		1A S16		
205	36634365110	RING,BACKUP	1				
206	91001100600	O-RING	1		1A P6		
211	36636435130	SWITCH,PUSH	2				

**AT-146-1 42095100058 UPPER
PB1380155-00 POWER SUPPLY (MOTOR/PIPING)**



AT-146-1 42095100058 UPPER

Pos No.	Parts No	Parts Name	Qty	Unit	Technical Data	Serial No (Start)	Serial No (End)
1	42421372100	HARNESS	1				
2	91810132530	FASTENER	20				
3	82154101010	METER,HOUR	1		701QN		
4	82109341003	SWITCH,KEY	1				
5	82100002307	COVER (CONTACT BLOCK PROTECTION/BLACK)	1				
6	82100002869	METER	1			227544	227544
	82199804842	METER	1				
7	80172303016	SCREW,MACHINE	2		M3X16		
8	90303070301	WASHER,PLAIN	2		3		
9	90201200300	NUT	2		M3		
10	90302040301	WASHER,SPRING	2		3		
11	42736991030	DIODE (WITH CONNECTOR)	1				
20	82182809623	DIODE	4				
21	82100001840	FUSE	1		15A,BLUE		
22	82100002785	HOLDER,FUSE	1				
31	42421157510	SPARE KEY (2PIECE-1SET)	1				

AT-146-1 4209510058 UPPER

Pos No.	Parts No	Parts Name	Qty	Unit	Technical Data	Serial No (Start)	Serial No (End)	Remarks
4	90101210035	BOLT	4		M10X35			
5	90302041001	WASHER,SPRING	6		10			
6	90172108060	BOLT,HEXAGON SOCKET	2		M8X60			
7	90302040801	WASHER,SPRING	5		8			
8	37002472380	HOSE	2		L=2580			
9	80481103030	JOINT	1		L,G3/8-G3/8			
10	37002468750	HOSE	2		L=2060			
11	37002472360	HOSE	1		L=650			
12	37002408040	HOSE	1		L=560			
13	90101210065	BOLT	2		M10X65			
14	80441030604	FITTING,ELBOW	1					
15	37000908730	JOINT (WITH O-RING)	2		L,G3/8-G1/4			
16	37002467500	HOSE	1		L=550			
17	37002446530	HOSE	1		L=460			
18	37002467470	HOSE	1		L=1500 TO 620			
19	80430620400	JOINT	2					
20	37002485560	HOSE	1		L=810			
21	37002469020	HOSE	1		L=1700			
22	90180208085	BOLT,BUTTON	2		M8X85			
23	37002408440	HOSE	1		L=300 TO 315			
24	37002468910	HOSE	1		L=420			
25	37002437110	HOSE	1		L=400			
27	91810132530	FASTENER	20					
28	37002485570	HOSE	1		L=840			
29	37000714020	CLAMP ASSY	2		12X2			
30	37002467150	HOSE	2		L=830			
31	80400160128	JOINT	1		S,G3/8-G1/4			
32	89640201000	HOSE	1		660-NFK,1M			
34	91002801400	O-RING	2		1B P14			
35	37002471700	HOSE	1		L=1150			
36	82100001411	TUBE,SPIRAL			SE-08BK			
37	37002471340	HOSE	1		L=1500			
38	37002467780	HOSE	1		L=630			
39	37002411660	HOSE	1		L=630			
40	37000917220	FITTING	1		PF3/8XPF3/8			
41	37001600820	NUT	1		PF3/8			
43	37002469100	HOSE	1		L=400			
45	82127020180	TUBE,SPIRAL	2	M				
46	82100000955	GROMMET	4		SG-34A			
47	37002472390	HOSE	1		L=2080			
48	82100002039	CLAMP	1					
49	90201200800	NUT	2		M8			
50	82410124004	INSULATOR	1					
51	90101206012	BOLT	2		M6X12			
52	90302040601	WASHER,SPRING	2		6			
53	42345040010	PLATE	1					
54	82127020240	TUBE,SPIRAL	1	M				
55	(*****)	VALVE	1					
56	37002485550	HOSE	1		L=960			
57	37002468120	HOSE	1		L=1050			
71	36649190000	VALVE,REMOTE CONTROL	1					
72	37000912910	JOINT	2		G1/2,G3/8			
73	37000928120	JOINT	1		G1/2,G1/2			
74	91002801800	O-RING	12		1B P18			
75	37000927640	JOINT	2					
76	37000912920	JOINT	1					
77	37000928490	JOINT	1					
78	37000925660	JOINT	1		S,G3/4-G1/2			
79	91002802400	O-RING	2		1B P24			
80	37000908720	JOINT (WITH O-RING)	1		PF1/2-PF3/8			
81	37000928630	JOINT	1		S,PF3/4,PF1/2			
82	80430620800	JOINT	2					
91	36636340000	VALVE,MANUAL CONTROL	2					

AT-146-1 4209510058 UPPER

Pos No.	Parts No	Parts Name	Qty	Unit	Technical Data	Serial No (Start)	Serial No (End)
1	42613351100	CASE,INNER	1				
2	42613351200	CASE,INNER (JACK)	1				
4	36035100000	CYLINDER,JACK	1				
5	42613351400	FLOAT ASSY	1				
6	37000171720	PIN	1				
7	80601110250	RING,RITAINING	2		S25		
8	37000169010	PIN	1		30		
9	80601110300	RING,RITAINING	2		S30		
10	36624260000	VALVE,CHECK	1				227661
11	90171108055	BOLT	4		M8X55		
12	37000138750	PIN	1		18		
13	80136332036	PIN,SPLIT	2		3.2X36		
14	80400160127	JOINT	1				
15	91002801100	O-RING	1		1B P11		
16	36672460000	FILTER (NIPPLE TYPE)	1				
17	42612851010	COVER	1				
18	90186206014	BOLT,FLANGE	2		M6X14		
19	37000112320	PIN	1				
20	80601110120	RING,RITAINING	2		S12		
21	91810130240	FASTENER	2				
22	31201770100	PLATE,SLIDE	8		T=3.0		
41	36042810000	CYLINDER,EXTENSION (FRONT)	1				
42	80400160127	JOINT	2				
43	91002801100	O-RING	3		1B P11		
44	37002474960	HOSE	1		L=1620		
45	42612851350	HARNES	1				
46	91810130240	FASTENER	13				
61	42612851420	TRUNNION	1				
100	42613351000	OUTRIGGER (FRONT,L/INNER CASE)	1				

AT-146-1 4209510058 UPPER

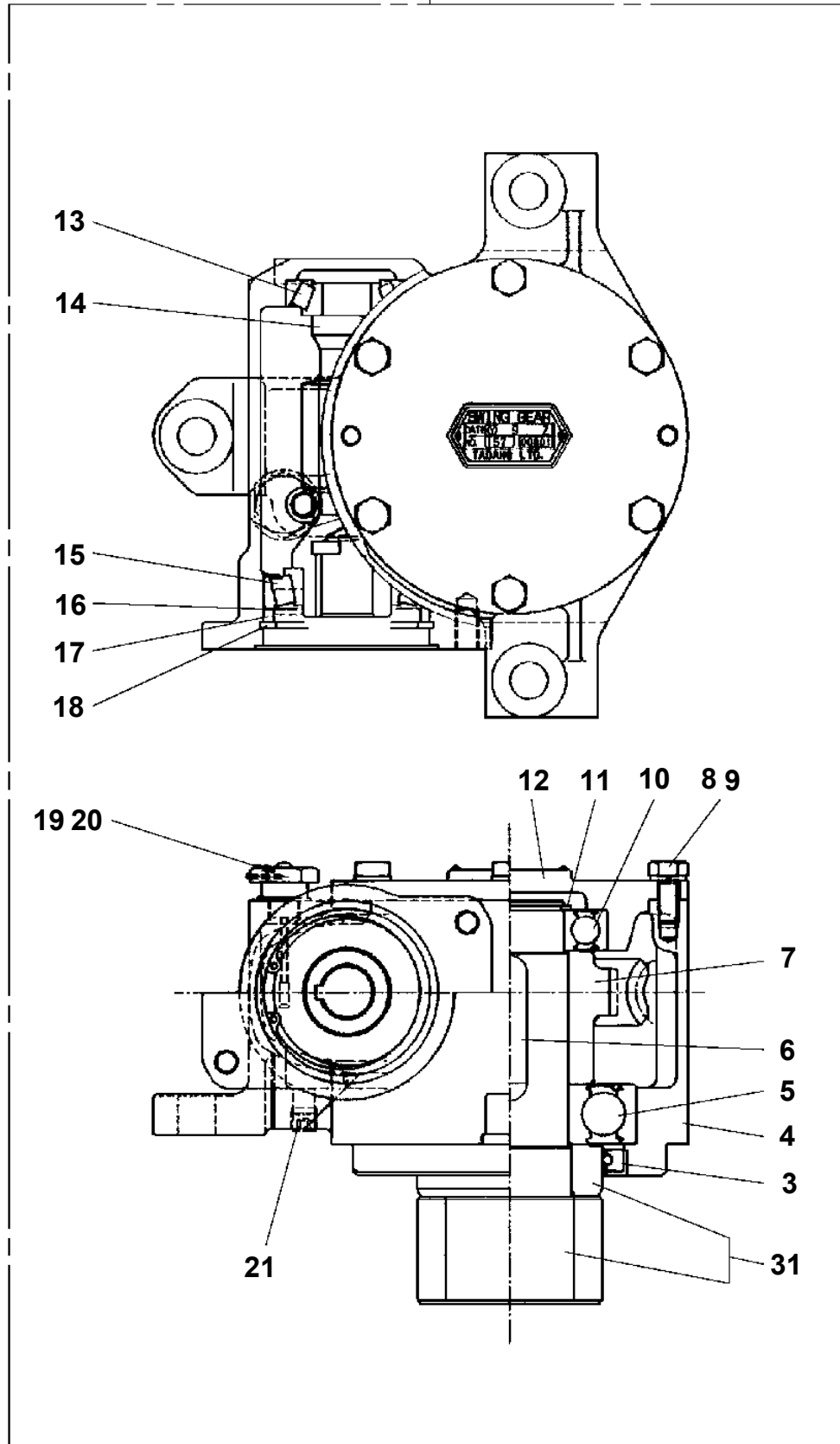
Pos No.	Parts No	Parts Name	Qty	Unit	Technical Data	Serial No (Start)	Serial No (End)	Remarks	Pa
1	90209202200	NUT	1		M22				
	90209202200	NUT	1		M22				
2	90302042201	WASHER,SPRING (22)	1						
	90302042201	WASHER,SPRING (22)	1						
3	90303072201	WASHER,PLAIN	1		22				
	90303072201	WASHER,PLAIN	1		22				
4	91684006000	PACKING	2						
	91684006000	PACKING	2						
5	91431205001	RING,BACKUP	2						
	91431205001	RING,BACKUP	2						
6	91002802500	O-RING	1		1B P25				
	91002802500	O-RING	1		1B P25				
7	91302206000	BEARING,PLAIN	2						
	91302206000	BEARING,PLAIN	2						
8	36034700060	PISTON	1						
	36034700060	PISTON	1						
9	36035100200	ROD	1						
	36035100200	ROD	1						
10	36035100100	CYLINDER	1						
	36035100100	CYLINDER	1						
11	91002905500	O-RING	1		1B G55				
	91002905500	O-RING	1		1B G55				
12	91694004000	PACKING	1						
	91694004000	PACKING	1						
13	91410204001	RING,BACKUP	1						
	91410204001	RING,BACKUP	1						
14	91660004001	SEAL,DUST	1						
	91660004001	SEAL,DUST	1						
15	36034700300	COVER,ROD	1						
	36034700300	COVER,ROD	1						
16	91002906000	O-RING	1		1B G60				
	91002906000	O-RING	1		1B G60				
50	36034709900	PACKING SET	1		40X60				
	36034709900	PACKING SET	1		40X60				
100	36035100000	CYLINDER,JACK	1						
	36035100000	CYLINDER,JACK	1						

AT-146-1 4209510058 UPPER

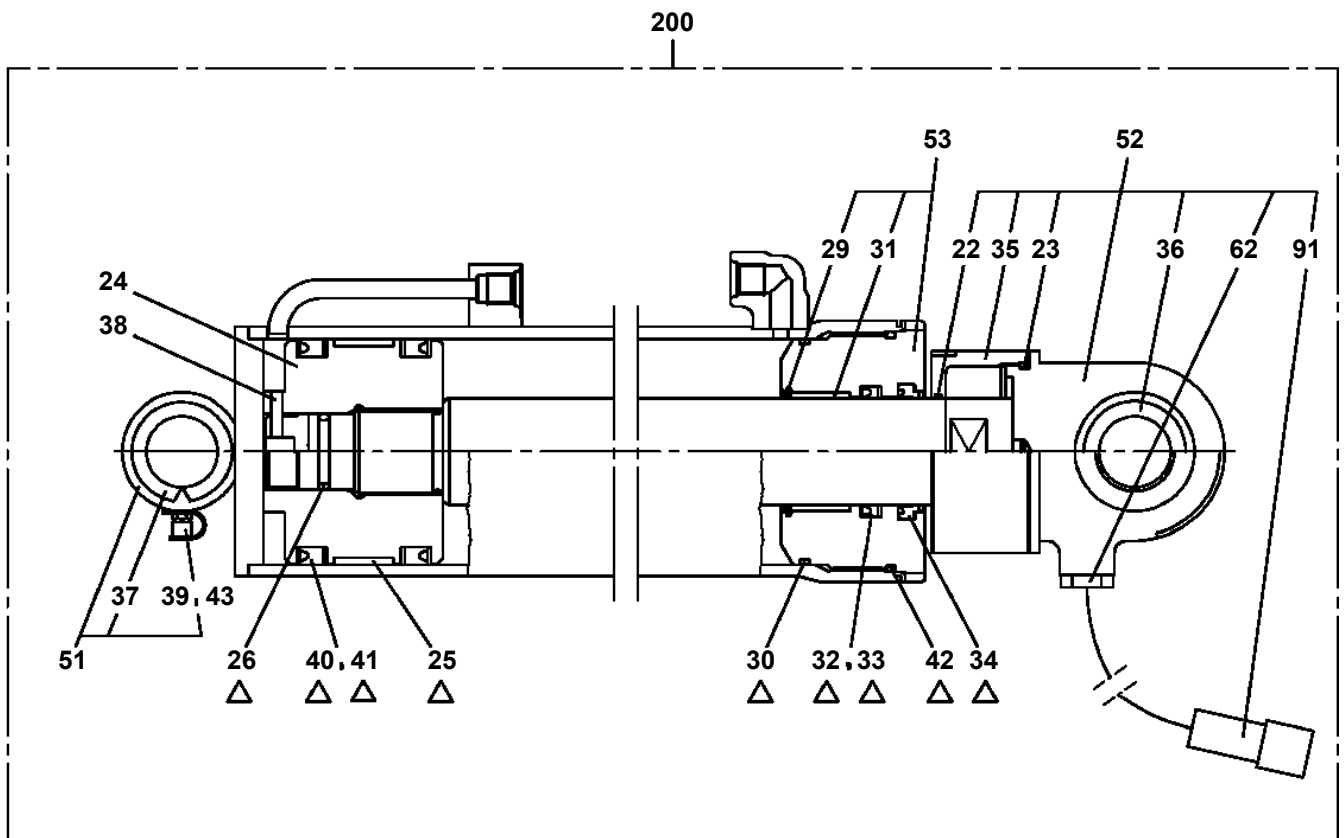
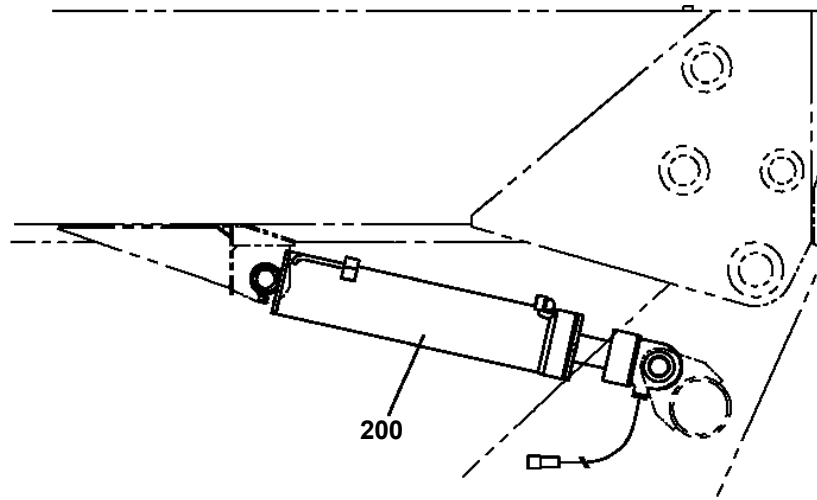
Pos No.	Parts No	Parts Name	Qty	Unit	Technical Data	Serial No (Start)	Serial No (End)	Remarks	Pa
1	82100001803	TUBE,CORRUGATE	2	M	13				
2	91810130250	FASTENER	30						
3	37000600700	CLAMP	12		12X3				
4	90280200600	NUT,FLANGE	12		M6				
5	37002471760	HOSE	1		L=3850		227370		
	37002479720	HOSE	1		L=3730	227371			
6	37002467190	HOSE	1		L=3950				
7	37002471740	HOSE	1		L=3900				
8	37002471750	HOSE	1		L=3450				
9	37002446750	HOSE	1		L=3500				
10	37002471770	HOSE	1		L=3750				
11	91002801100	O-RING	12		1B P11				
12	82100002010	CLAMP	1		WR15				
14	80481302025	JOINT	6		L,G1/4-G1/4				
15	37002413180	HOSE	1		L=500		227370		
	37002479730	HOSE	1		L=410	227371			
16	37002468670	HOSE	1		L=680				
17	37002460580	HOSE	1		L=600				
18	80430620400	JOINT	6				227370		
	80430620400	JOINT	4			227371			
19	37000924960	JOINT (WITH O-RING)	2			227371			
20	36033123000	ORIFICE	2			227371			
21	37002475750	HOSE	1		L=2800				
22	37002431060	HOSE	1		L=1000				
23	37002411650	HOSE	1		L=850				
24	37002471780	HOSE	1		L=800				
25	42645980010	SUPPORT	1						
26	90101208018	BOLT	4		M8X18				
27	90302040801	WASHER,SPRING	6		8				
29	37000714210	CLAMP ASSY	2		12X4				
30	37002408040	HOSE	1		L=560				
31	37002475760	HOSE	1		L=2500				
32	37002475740	HOSE	1		L=2650				
33	37002451100	HOSE	1		L=2850				
34	82100002017	CLAMP	1		WR30				
35	90280200800	NUT,FLANGE	11		M8				
37	82100002019	CLAMP	8		WR40				
38	82100001807	TUBE,CORRUGATE	1	M	28				
39	82100001804	TUBE,CORRUGATE	1	M	15				
40	82100001806	TUBE,CORRUGATE	1	M	22				
41	80471020503	JOINT	1		45,G3/8-G3/8				
42	91002801400	O-RING	1		1B P14				
43	80471020504	JOINT	1		HL205-04				
44	91002801800	O-RING	2		1B P18				
45	80481004060	JOINT	1		S G3/4-G1/2				
46	37002440000	HOSE	1		L=700				
47	37002471810	HOSE	1		L=550				
50	90101208080	BOLT	2		M8X80				
51	37000925950	JOINT	6		S,G1/4-G1/4				
52	42645980020	SUPPORT	1						
53	90101210020	BOLT	4		M10X20				
54	90302041001	WASHER,SPRING	4		10				
55	90101206012	BOLT	1		M6X12				
56	90302040601	WASHER,SPRING	1		6				
57	37002475770	HOSE	1		L=2300				
58	37000714810	CLAMP	4						
59	82100002016	CLAMP	1		WR25				
60	82400000204	GROMMET	1	M	L=320				
81	36625170000	VALVE,CHECK	1				227914		000
	36625930000	VALVE,CHECK	1			227915			000
82	80471020502	JOINT	4						
83	91002801100	O-RING	12		1B P11				
	91002801100	O-RING	6		1B P11		227370		

AT-146-1 42095100058 UPPER
PD1010160-00 REDUCER, SWING SPEED

50



AT-146-1 42095100058 UPPER
 PE1050112-01 CYLINDER,LEVELING (LOWER)

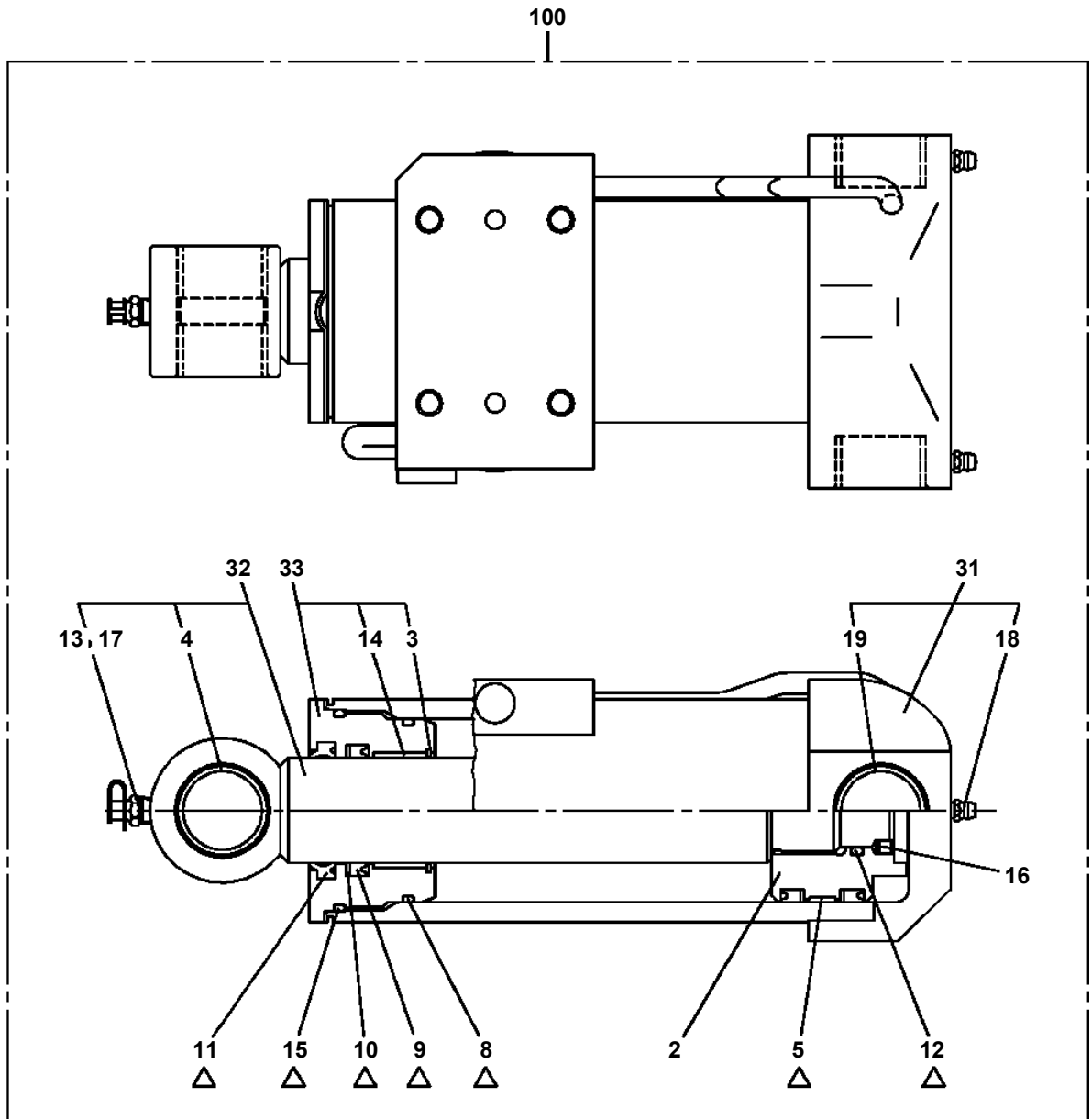


△:PACKING SET KEY NO.54 (KEY NO.25,26,30,32,33,34,40,41,42)

AT-146-1 42095100058 UPPER

Pos No.	Parts No	Parts Name	Qty	Unit	Technical Data	Serial No (Start)	Serial No (End)	Remarks	Pa
1	37002472100	HOSE	1		L=890				
2	37002460990	HOSE	1		L=2250				
3	37002471190	HOSE	1		L=2300				
4	37002472080	HOSE	1		L=1850				
5	37002459850	HOSE	1		L=2100 TO 1850				
6	37002472090	HOSE	2		L=1620				
7	37002471530	HOSE	1		L=2040				
8	37000924960	JOINT (WITH O-RING)	1						
9	42342460320	ORIFICE	2		1.0		227918		
	36033124000	ORIFICE	2			227919			
10	80481304024	JOINT	2						
11	91002801800	O-RING	2		1B P18				
12	80430620400	JOINT	1						
13	91002801100	O-RING	1		1B P11				
14	91810132530	FASTENER	3						
15	37000924410	JOINT	1		PF1/4-PF1/4				
16	42311304300	GUIDE	1						
17	42311304400	GUIDE	1						
18	90101208014	BOLT	4		M8X14				
19	90302040801	WASHER,SPRING	4		8				
20	90101206014	BOLT	1		M6X14				
21	90302040601	WASHER,SPRING	1		6				
41	91002801100	O-RING	2		1B P11				

**AT-146-1 42095100058 UPPER
PF1360004-00 CYLINDER,WINCH JIB**



Δ:PACKING SET KEY NO.34 (KEY NO.5,8,9,10,11,12,15)

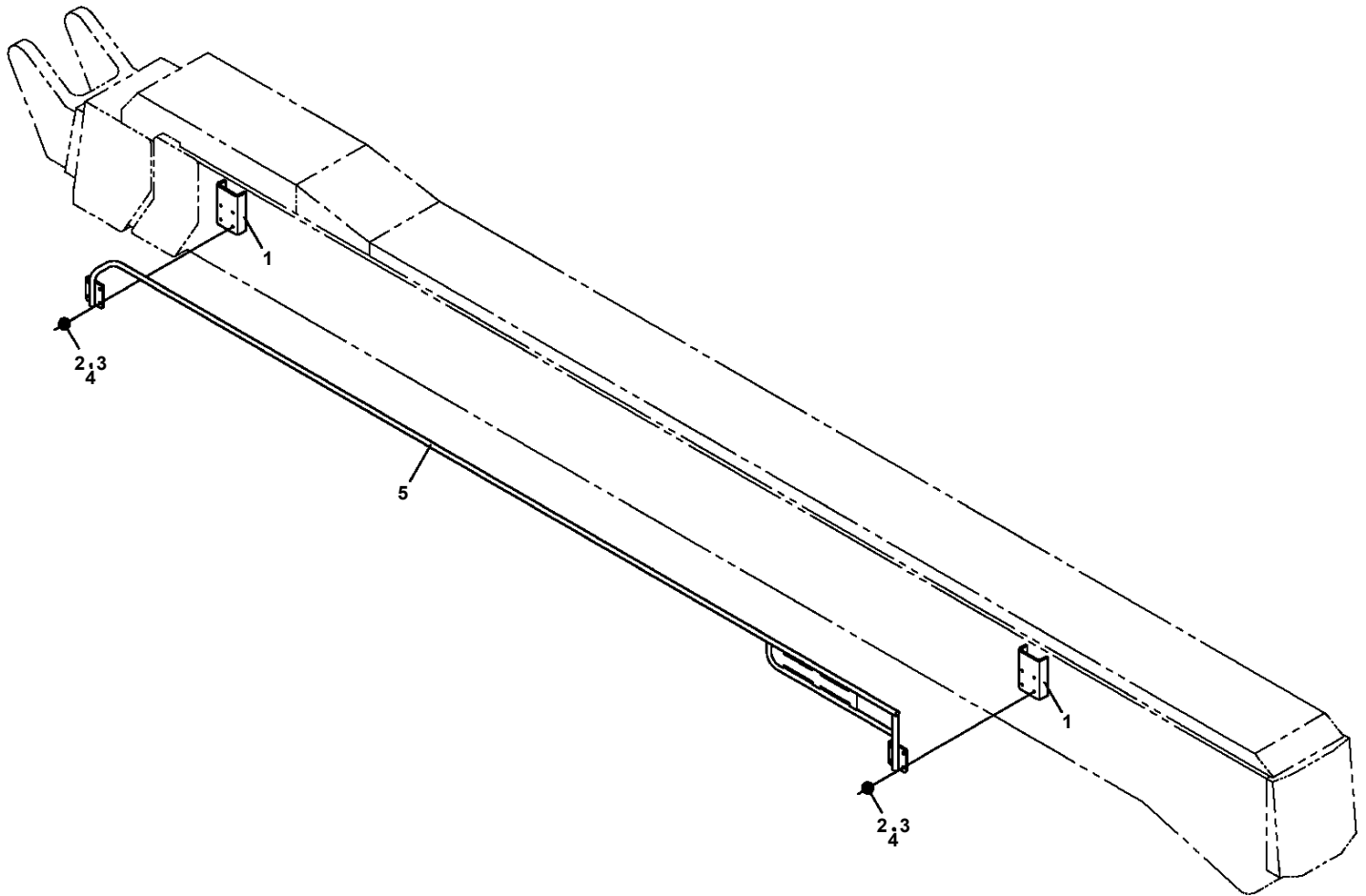
AT-146-1 4209510058 UPPER

Pos No.	Parts No	Parts Name	Qty	Unit	Technical Data	Serial No (Start)	Serial No (End)	Re
1	42201701000	FRAME (BOOM, TOP)	1					
2	42201632200	BOOM, TOP	1					
3	42201632500	SADDLE	1					
4	42201633000	BOOM, 2ND	1					
5	42201639510	BOOM, BASE	1					
6	37001918570	ROPE, WIRE (TESAC)	2		8X5.02M			
	37001918580	ROPE, WIRE (KOKOKU)	2		8X5.02M			
7	37001918600	ROPE, WIRE (KOKOKU)	2		10X9.415M			
	37001918590	ROPE, WIRE (TESAC)	2		10X9.415M			
9	42201700200	ROLLER ASSY	1					
10	42201700300	ROLLER ASSY	1					
11	42201700010	PLATE	10		T=0.8			
12	90171112030	BOLT	12		M12X30			
13	90302041201	WASHER, SPRING	12		12			
14	37000115380	PIN	1					
15	90238403008	NUT, CASTLE	1		M30X2			
16	80136360050	PIN, SPLIT	1		6X50			
17	90303073001	WASHER, PLAIN	1		30			
18	37000168750	PIN	1					
19	80601110300	RING, RITAINING	2		S30			
20	42201630800	ROLLER ASSY	2					
21	42201630060	PLATE	N		T=0.8			
22	42201630910	PLATE	N		T=1.0			
23	37000155100	PIN	4					
24	90171106012	BOLT	6		M6X12			
25	90302040601	WASHER, SPRING	4		6			
26	42201630010	PIN	2					
27	42200021510	PLATE	2					
28	90171110025	BOLT	8		M10X25			
29	90302041001	WASHER, SPRING	56		10			
30	90171110060	BOLT	4		M10X60			
31	90180210040	BOLT, BUTTON	12		M10X40			
33	90171110016	BOLT	16		M10X16			
35	42201630020	RETAINER	2					
36	37002011160	PLATE, SLIDE	2					
	37002013550	PLATE, SLIDE	2			227333	227332	
37	90171110014	BOLT	4		M10X14			
38	37000178720	PIN	2					
39	80601110200	RING, RITAINING	4		S20			
40	90171114040	BOLT	12		M14X40			
41	90309341401	WASHER, SPRING	28					
42	37000574840	PLATE	8					
43	82455106000	NIPPLE, GREASE	4		A-M6F FE			
44	82400000459	CAP	2					
45	37002011180	PLATE, SLIDE	4					
46	37000574810	PLATE	N		T=1.0			
47	37000574820	PLATE	N		T=1.0			
48	90172106030	BOLT, HEXAGON SOCKET	16		M6X30			
49	37002011170	PLATE, SLIDE	2					
50	37000508520	PLATE	N		T=0.8			
51	37002006500	PLATE, SLIDE	2					
52	80184306012	SCREW, MACHINE	6		M6X12			
53	37002010340	PLATE, SLIDE	4					
54	37000510800	PLATE	N		T=0.8			
55	37000176290	PIN	1					
56	80602110300	RING, RITAINING	2		R30			
57	37000312680	SPACER	2					
58	42201630400	SHEAVE ASSY	1					
59	31630482500	CAP	4					
60	37001007240	SHEAVE ASSY	2					
61	37000176300	PIN	2					
62	80602110400	RING, RITAINING	2		R40			
63	37000176310	PIN	1					

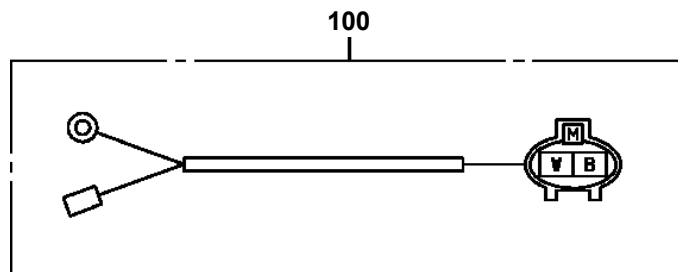
AT-146-1 42095100058 UPPER

Pos No.	Parts No	Parts Name	Qty	Unit	Technical Data	Serial No (Start)	Serial No (End)
121	37000928200	JOINT	1				
122	80400160129	JOINT	2				
125	80302090241	FITTING	1		KCO18-040N		
126	91002801800	O-RING	1		1B P18		
151	42344971510	SUPPORT	1				
152	42344971520	BLADE	1				
153	42344971530	PLATE	1				
154	90101205016	BOLT	5		M5X16		
155	90201200500	NUT	5		M5		
156	90302040501	WASHER,SPRING	5		5		

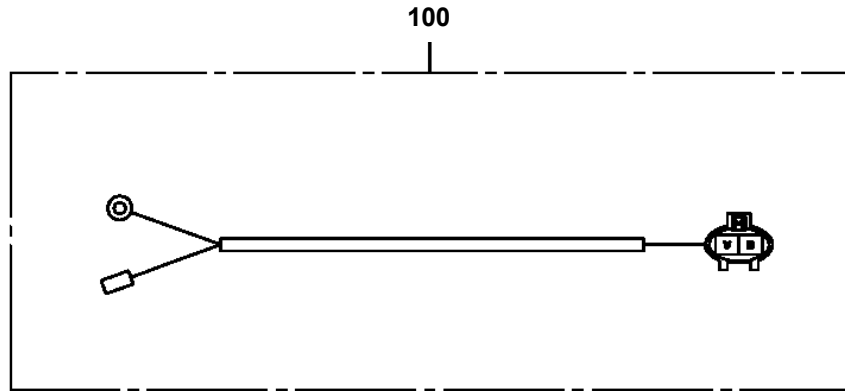
**AT-146-1 42095100058 UPPER
PG5240003-00 GUIDE ASSY (BOOM SIDE HOOK,AT-146-1)**



**AT-146-1 42095100058 UPPER
PH5031078-00 HARNESS**



**AT-146-1 42095100058 UPPER
PH5032327-00 HARNESS**



CLICK HERE TO **DOWNLOAD** THE COMPLETE MANUAL

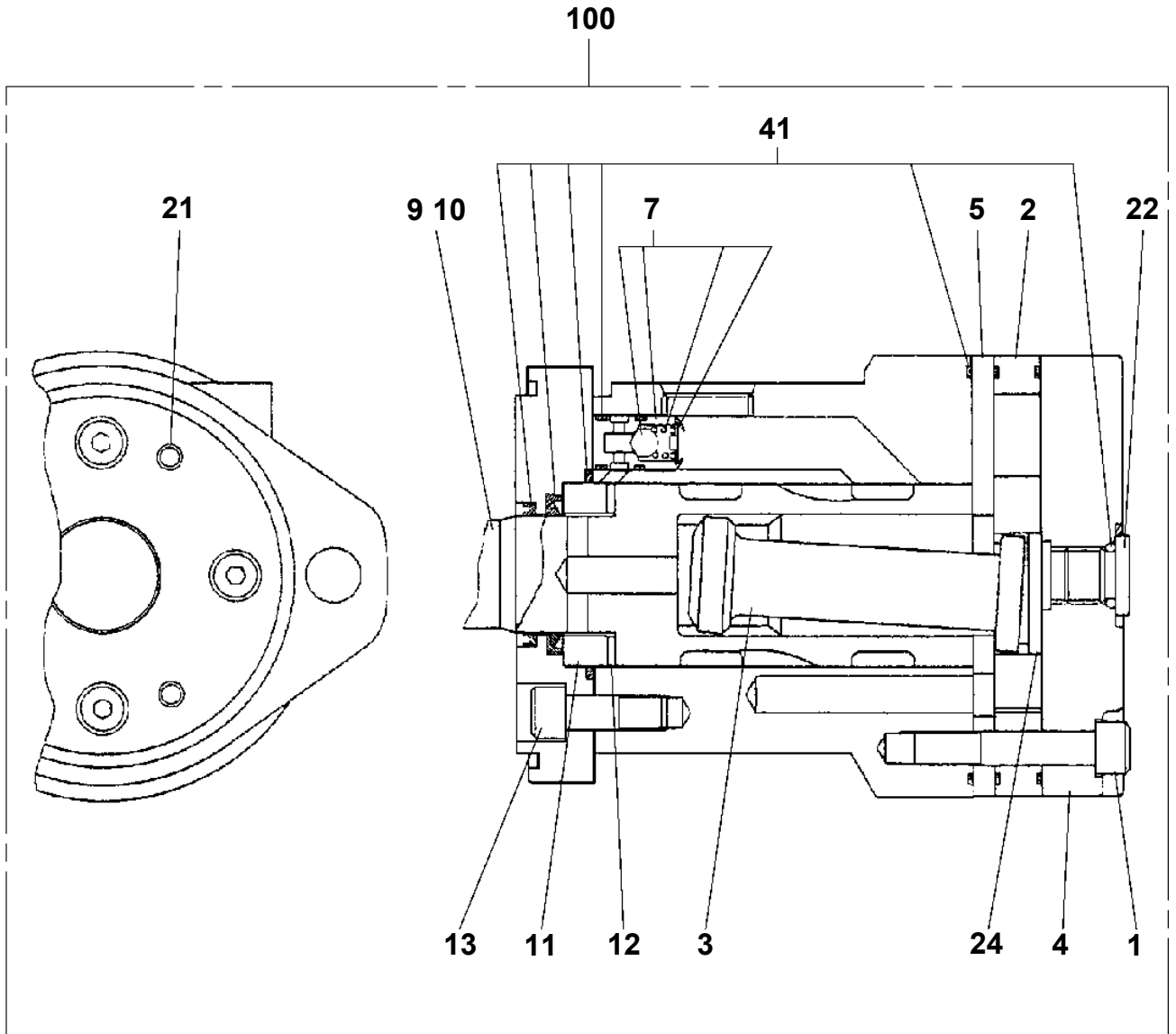
- Thank you very much for reading the preview of the manual.
- You can download the complete manual from: www.heydownloads.com by clicking the link below



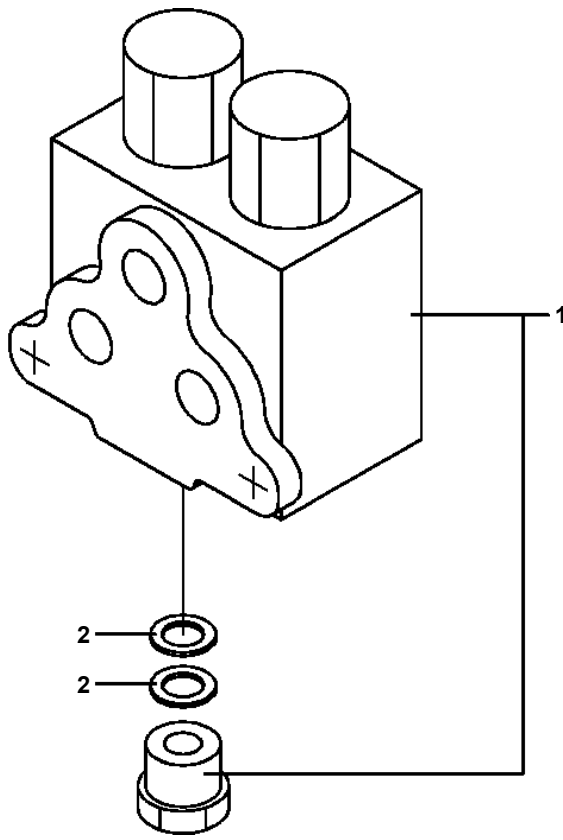
- Please note: If there is no response to CLICKING the link, please download this PDF first and then click on it.

CLICK HERE TO **DOWNLOAD** THE COMPLETE MANUAL

**AT-146-1 42095100058 UPPER
PI1010158-00 MOTOR, HYDRAULIC**



**AT-146-1 42095100058 UPPER
PI1100134-01 VALVE,RELIEF**

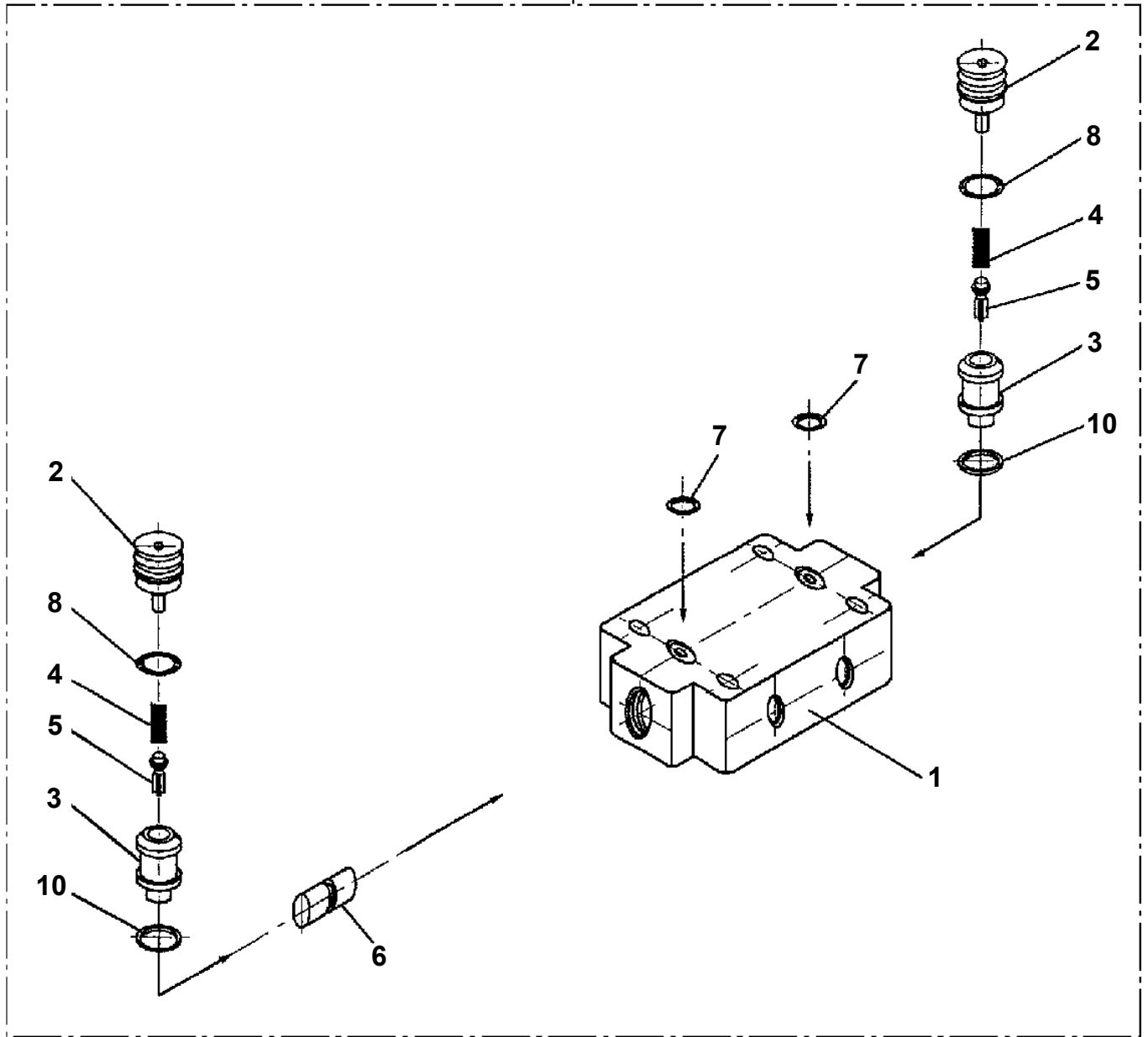


AT-146-1 4209510058 UPPER

Pos No.	Parts No	Parts Name	Qty	Unit	Technical Data	Serial No (Start)	Serial No (End)	Remarks	Page
2	36641687510	PLUG	1						
4	36641687520	RETAINER (A)	2				229651		
	36641687520	RETAINER (A)	1			229652			
5	36641687530	RETAINER (B)	2				229651		
	36641687530	RETAINER (B)	1			229652			
6	36641687540	RETAINER (C)	1				229651		
7	36640175040	SPACER	4						
8	36641687550	SPRING (A)	1						
9	36641687560	SPRING (C)	1				229651		
10	36642915020	NUT	1						
11	36641687570	ROD	1						
12	36648285010	GUIDE (SOLENOID)	1				229651		
	36740455010	GUIDE (SOLENOID)	1			229652			
13	36646375050	COIL,SOLENOID	1						
16	91000501200	O-RING	4						
17	91001102000	O-RING	1		1A P20		229651		
	36740455020	O-RING	1			229652			
18	91002801800	O-RING	2		1B P18				
19	91001002500	O-RING	1		S25		229651		
	36740455040	O-RING	1			229652			
36	36740075020	PIN,SPRING	1			229652			
50	36648281000	VALVE,SOLENOID	1						

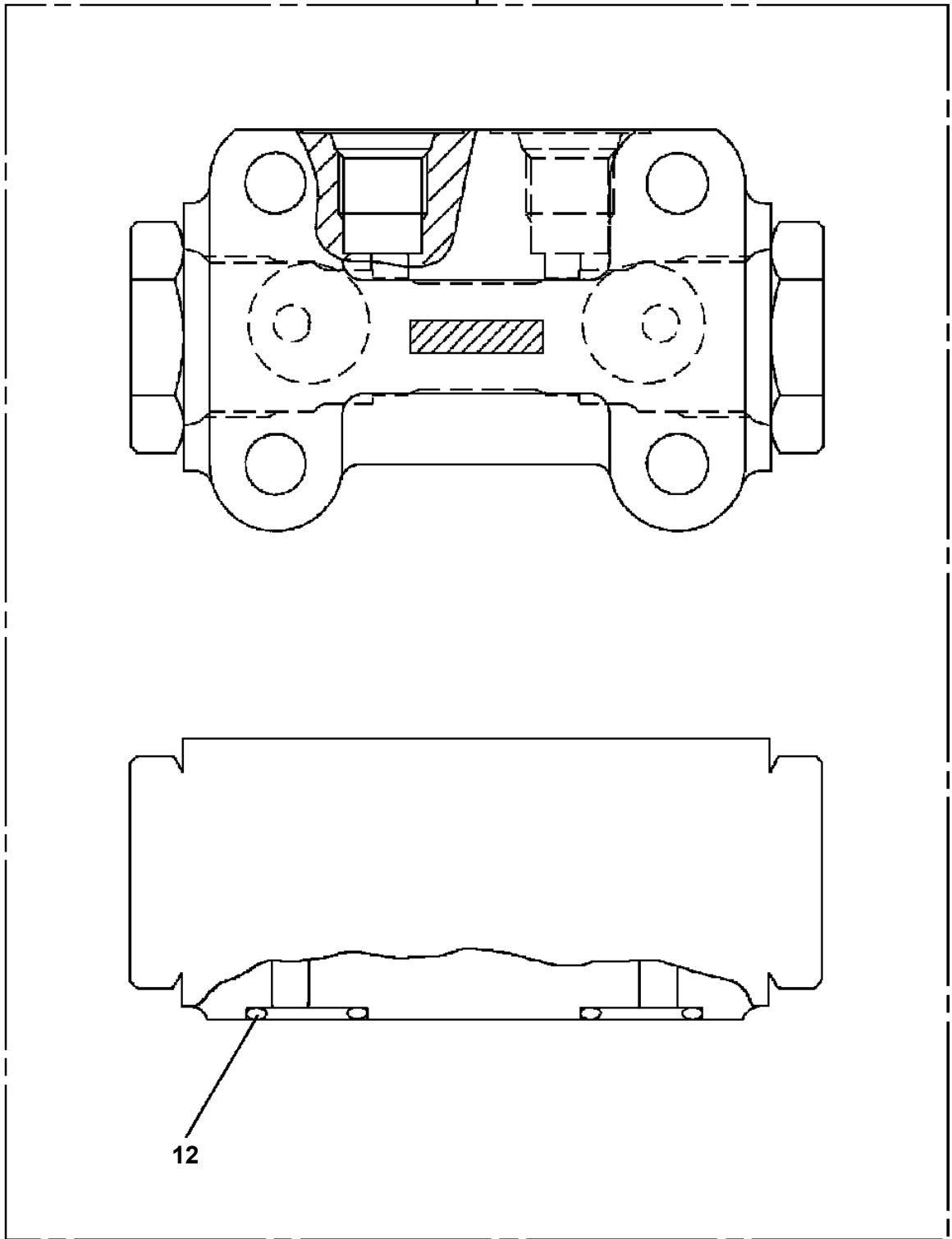
AT-146-1 42095100058 UPPER
PI1140136-01 VALVE,CHECK

30

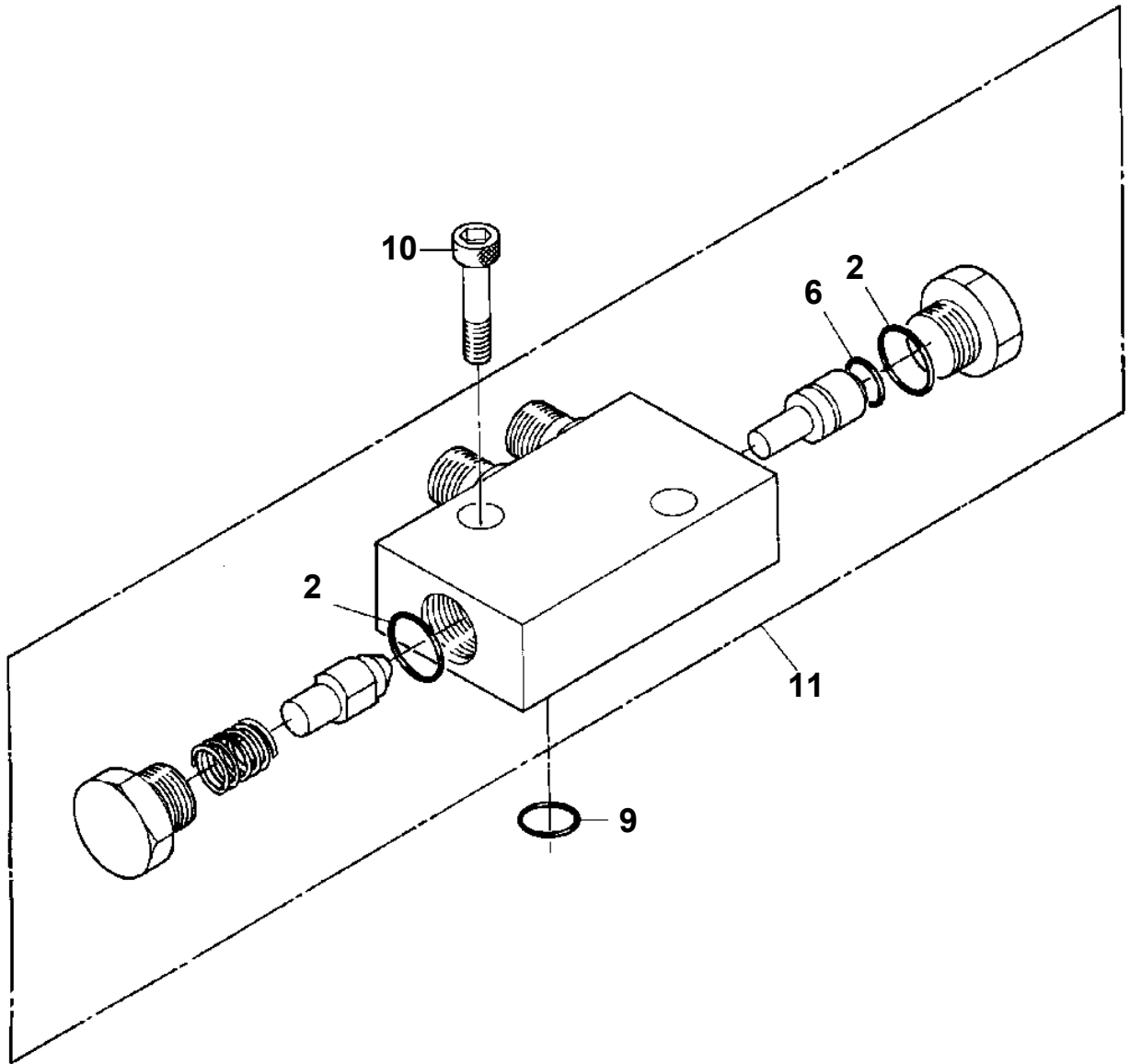


AT-146-1 42095100058 UPPER
PI1140227-00 VALVE,CHECK

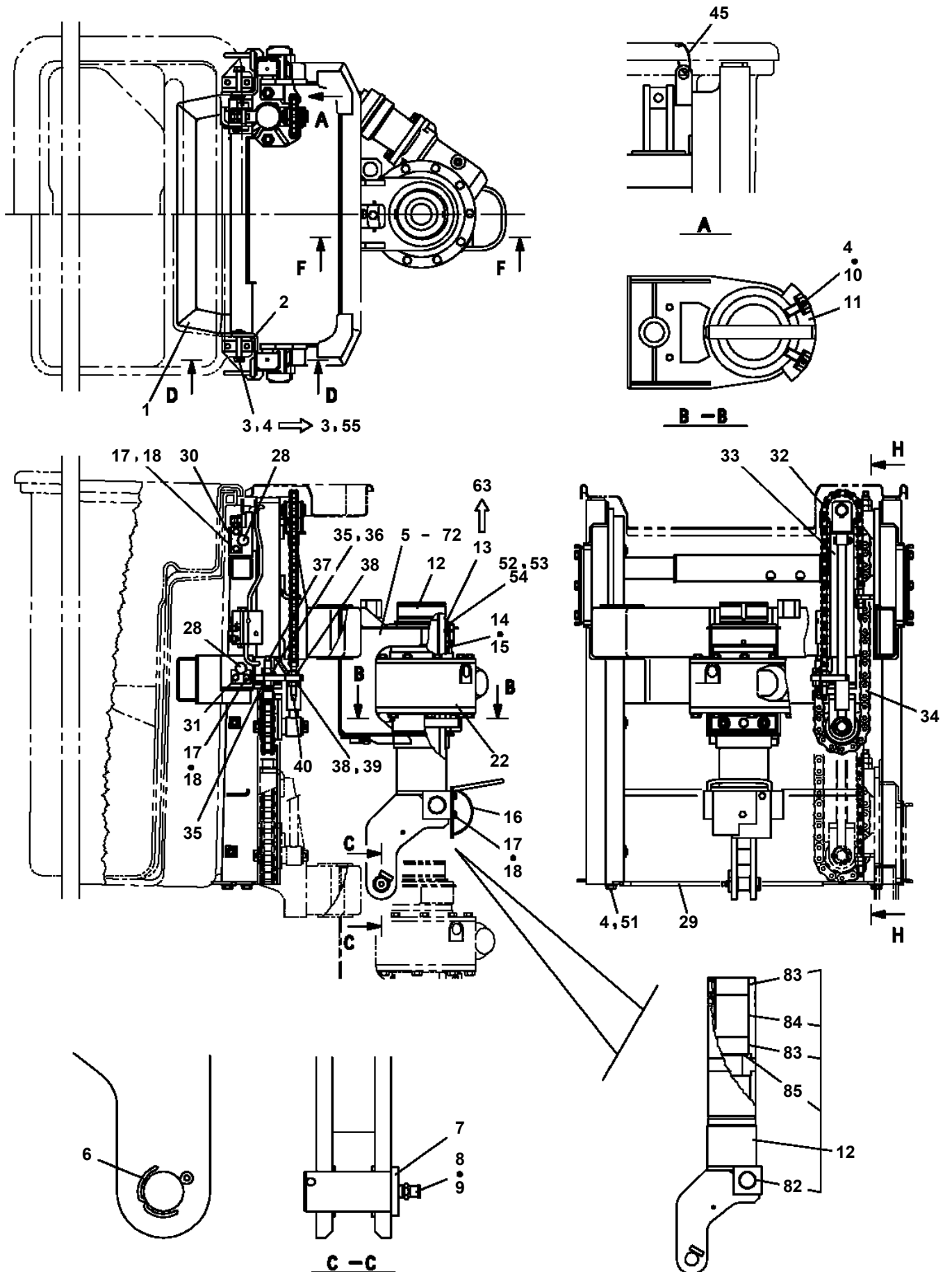
100



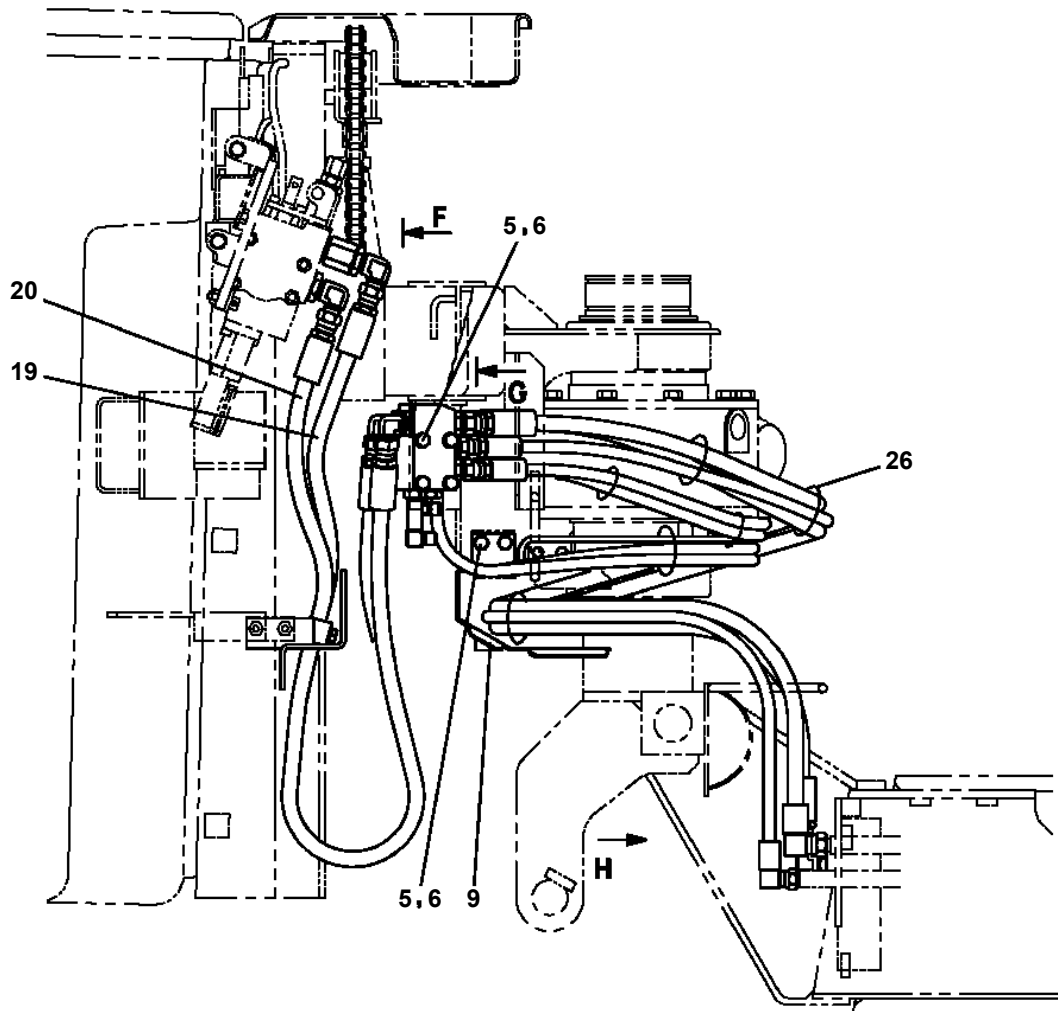
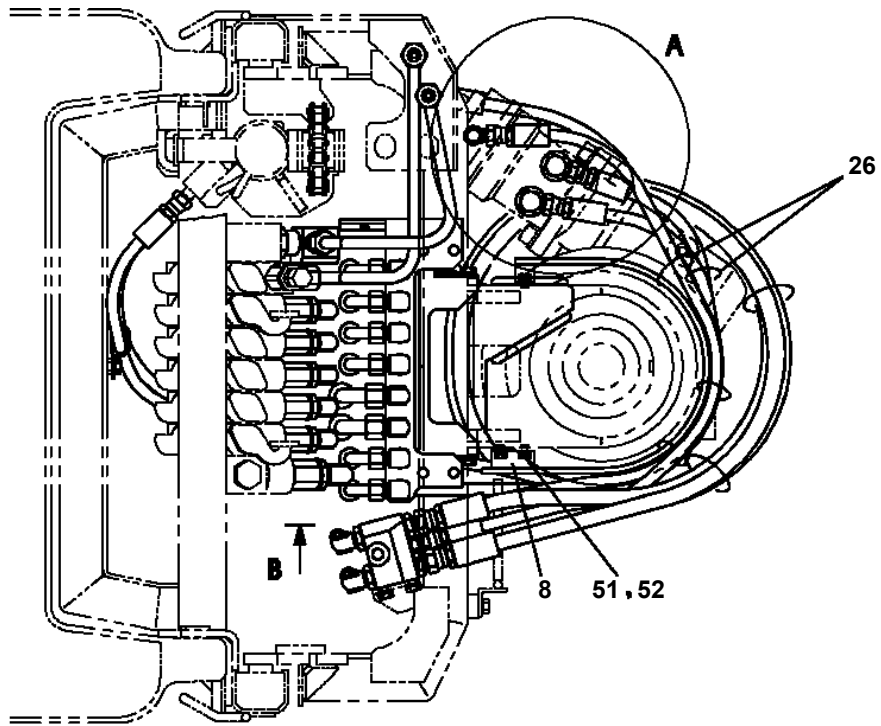
AT-146-1 42095100058 UPPER
PI1280041-01 VALVE,PILOT CHECK



**AT-146-1 42095100058 UPPER
PJ3020017-04 FRAME**



**AT-146-1 42095100058 UPPER
PJ3110024-01 PIPING (BUCKET)**



AT-146-1 4209510058 UPPER

Pos No.	Parts No	Parts Name	Qty	Unit	Technical Data	Serial No (Start)	Serial No (End)	Remarks
1	42265371100	COVER	1					
2	90183108015	BOLT	28		M8X15			
3	42265371200	COVER	1					
5	42264601010	SUPPORT	1					
6	42264821700	COVER	1					
7	42264821400	COVER	1					
8	42264821200	COVER	1					
9	42264821300	COVER	1					
10	42261942500	COVER (GRAY)	1					
11	42264821100	COVER	1					
12	90183108020	BOLT	2		M8X20			
13	90183108030	BOLT	1		M8X30			
14	37000517000	PLATE	4					
15	82466009202	CATCH	2					
16	90201500300	NUT	4		M3			
17	90302510301	WASHER,SPRING (SUS 3)	4					
18	90303520301	WASHER,PLAIN	8		3			
19	80172803012	SCREW,MACHINE	4		M3X12			
20	80175803010	SCREW,MACHINE	2		M3X8			
31	42265372100	COVER	1					
32	42265372200	COVER	1					
33	42265372300	COVER	1					
34	82465191253	HINGE	4					
35	80174804012	SCREW,MACHINE	16		M4X12			
36	37000572250	PLATE	8					
52	82400000312	GROMMET	1	M	L=1000			

AT-146-1 4209510058 UPPER

Pos No.	Parts No	Parts Name	Qty	Unit	Technical Data	Serial No (Start)	Serial No (End)	Remarks	Pages
1	42231711000	TABLE,SLEWING	1				227955		
	42231711001	TABLE,SLEWING	1			227956	227976		
	42231711002	TABLE,SLEWING	1			227977			
2	31630482500	CAP	1						
3	37001500250	BOLT	15		M16X70				
4	90303501601	WASHER,PLAIN	15		16				
5	37000507560	PLATE	1						
6	90171110022	BOLT	3		M10X22				
7	90302041001	WASHER,SPRING	7		10				
8	37000112690	PIN	1						
9	37000509190	PLATE	1						
10	90171112030	BOLT	2		M12X30				
11	90302041201	WASHER,SPRING	2		12				
12	37000175720	PIN	1						
13	42230210010	PIN	1						
14	37000505950	PLATE	1		T=3.2				
15	37000507730	PLATE	1						
16	90171320045	BOLT	1		M20X45				
17	90302042001	WASHER,SPRING	1		20				
18	42231270010	GROMMET	2						
19	42340240700	GROMMET	2						
20	82400000204	GROMMET	1		L=320				
21	82459103000	NIPPLE,GREASE	1		C-PT1/8				
22	82400000459	CAP	1						
23	42231400101	SUPPORT	1				227536		
	42231713000	SUPPORT ASSY	1			227537	227955		
	42231713001	SUPPORT ASSY	1			227956			
24	90101210022	BOLT	4		M10X22				
25	90201201000	NUT	4		M10				
26	90303071001	WASHER,PLAIN	4		10	227956			

AT-146-1 42095100058 UPPER

Pos No.	Parts No	Parts Name	Qty	Unit	Technical Data	Serial No (Start)	Serial No (End)	Remark
1	90101206014	BOLT	2		M6X14			
2	90302040601	WASHER,SPRING	16		6			
3	36140520000	DETECTOR,ANGLE	1					
4	90304110601	WASHER,TOOTH	4		6			
5	36131820000	DETECTOR,BOOM LENGTH	1					
7	82100002012	CLAMP	1		WR18			
8	90201200600	NUT	8		M6			
9	91810132530	FASTENER	10					
10	91850400601	CLAMP	1					
11	90101206010	BOLT	6		M6X1.0			
12	42350071000	ROLLER ASSY	2					
13	42353320100	COVER	1					
14	82100001735	SLEEVE	1					
15	82100001737	SLEEVE	2					
16	80175304010	SCREW,MACHINE	1		M4X10			
17	42360030060	WASHER	1					
18	82100002010	CLAMP	1		WR15			
19	82100002004	CLAMP	6		WR8			
20	90101206012	BOLT	4		M6X12			
31	42360030040	SUPPORT	2					
32	37001102350	ROLLER	2					
33	37000302060	SPACER	2		L=11.2			
35	90201201000	NUT	2		M10			
36	90302041001	WASHER,SPRING	2		10			
37	90303071001	WASHER,PLAIN	2		10			
52	82400000200	GROMMET	1		KG-012,L=250			

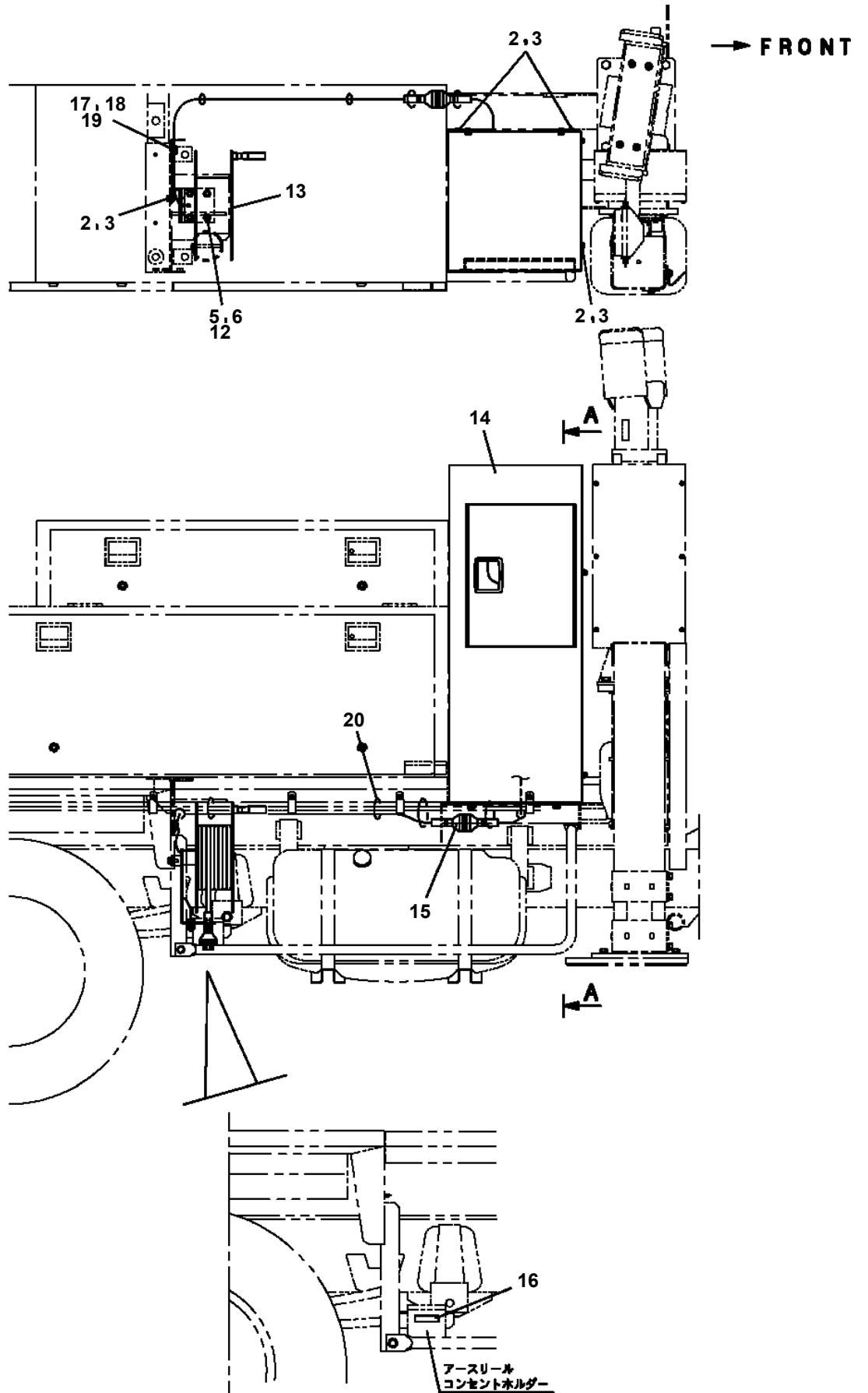
AT-146-1 4209510058 UPPER

Pos No.	Parts No	Parts Name	Qty	Unit	Technical Data	Serial No (Start)	Serial No (End)	Remarks	Pages
2	90101208012	BOLT	4		M8X12				
3	90302040801	WASHER,SPRING	4		8				
21	42353331100	SUPPORT	1				227324		
22	42433401300	LAMP	1				228103		
31	42353332100	SUPPORT	1			227325			
32	42737850100	GUARD	1			227325			
33	90101206018	BOLT	4		M6X18	227325	228117		
	90101206025	BOLT	4		M6X25	228104	228132		
34	90201200600	NUT	4		M6	227325	227547		
35	90302040601	WASHER,SPRING	4		6	227325			
37	42502030100	SUPPORT	1			228104	228132		
51	82100002550	BULB,LAMP	1		24V 20W		228103		
66	42433401301	LAMP	1			228104	228132		
73	90101206030	BOLT	4		M6X30	228133			
76	42433401302	LAMP	1			228133			
77	42502980100	SUPPORT	1			228133			
78	37000306130	SPACER	2		L=8	228133			
79	37000302980	SPACER	2		L=10	228133			
101	42353331000	LAMP ASSY	1				227324		
102	42353332000	LAMP ASSY	1			227325	228103		
103	42353332001	LAMP ASSY	1			228104	228132		
104	42353332002	LAMP ASSY	1			228133			

AT-146-1 42095100058 UPPER

Pos No.	Parts No	Parts Name	Qty	Unit	Technical Data	Serial No (Start)	Serial No (End)	Rema
1	42651727510	CASE ASSY (WITH HARENSS)	1					
2	42651727520	COVER (CASE)	1					
3	42651727530	PACKING (COVER)	1					
4	42651727540	PANEL	1					
5	42651727550	BOARD,CIRCUIT	1					
31	(*****)	P-ROM	1					
50	42652053000	CONTROLLER	1					

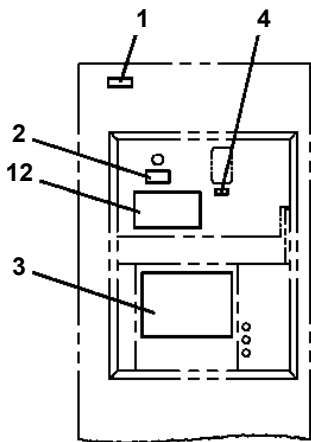
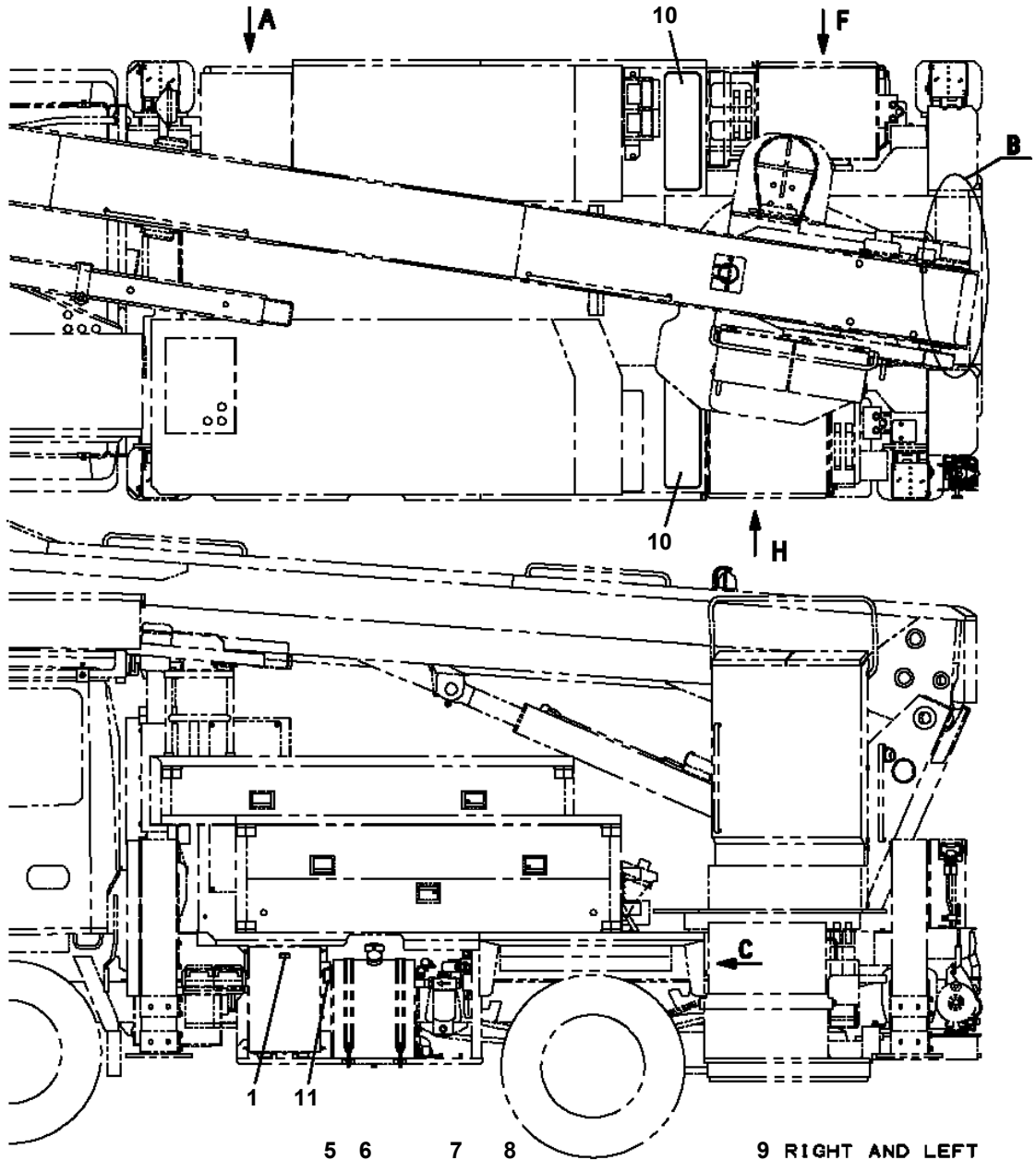
AT-146-1 42095100058 UPPER
PN1360017-00 MOUNT,CHARGER



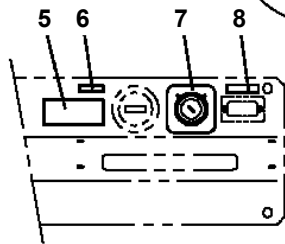
AT-146-1 42095100058 UPPER

Pos No.	Parts No	Parts Name	Qty	Unit	Technical Data	Serial No (Start)	Serial No (End)	Remarks	Pages
1	42391413080	PLATE,NAME	2						
2	42311305510	PLATE,NAME	2						
3	42392583120	PLATE,NAME	1						
4	42392583130	PLATE,CAUTION	1						
5	42311355010	PLATE,NAME	1						

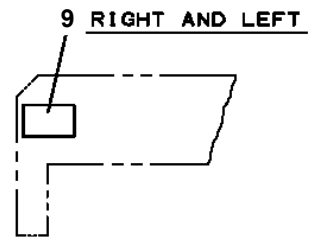
**AT-146-1 42095100058 UPPER
PO1013887-01 PLATE ASSY,NAME (MOTOR UNIT)**



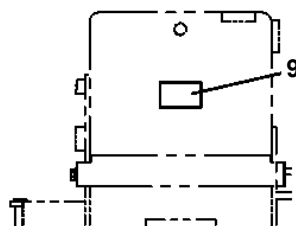
A
(OPEN THE COVER)



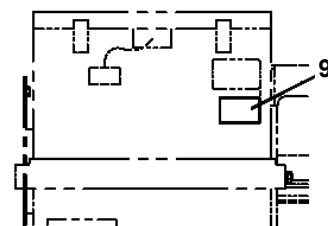
B
(OPEN THE COVER)



C



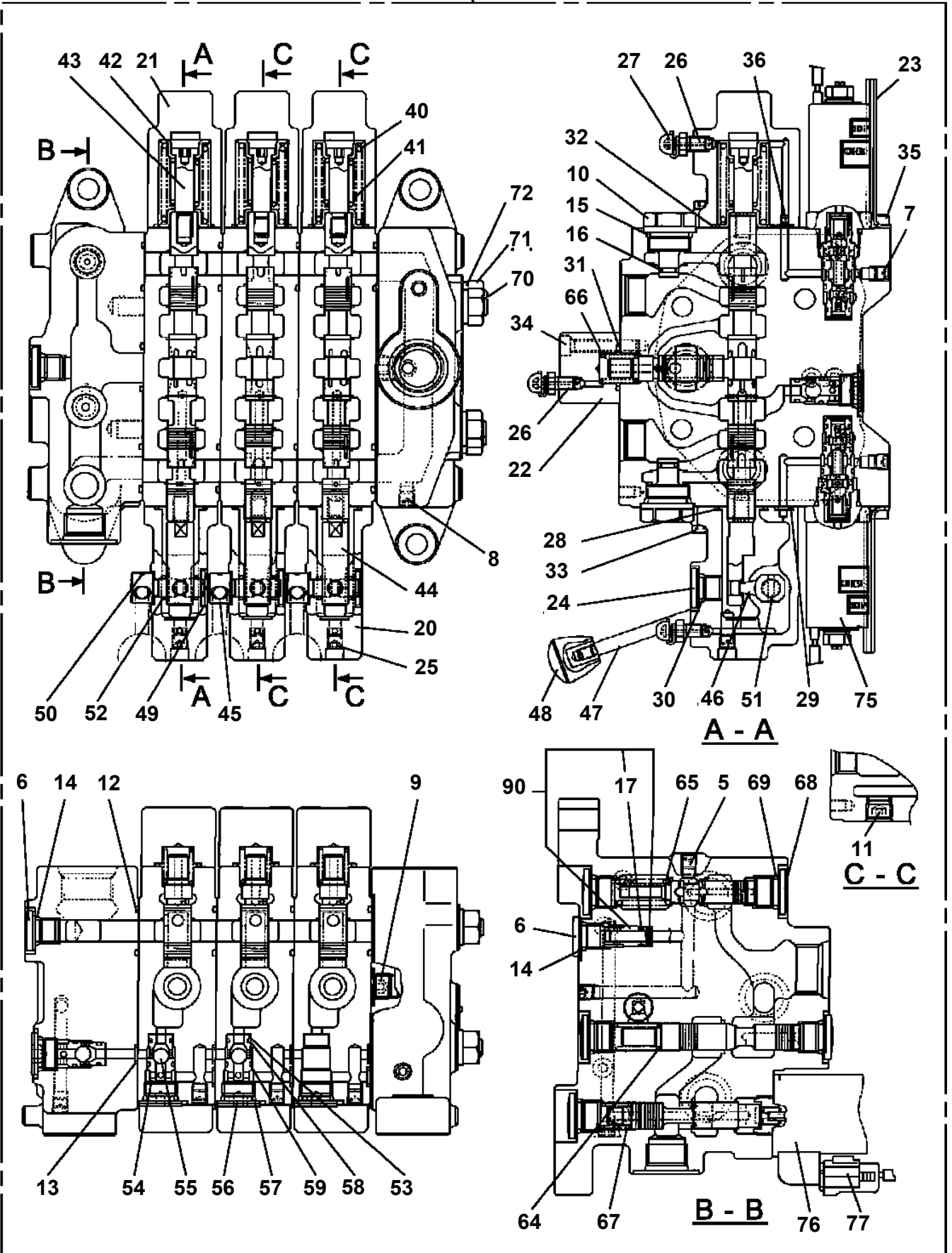
F



H

**AT-146-1 42095100058 UPPER
PV1020276-01 VALVE,REMOTE CONTROL**

·100



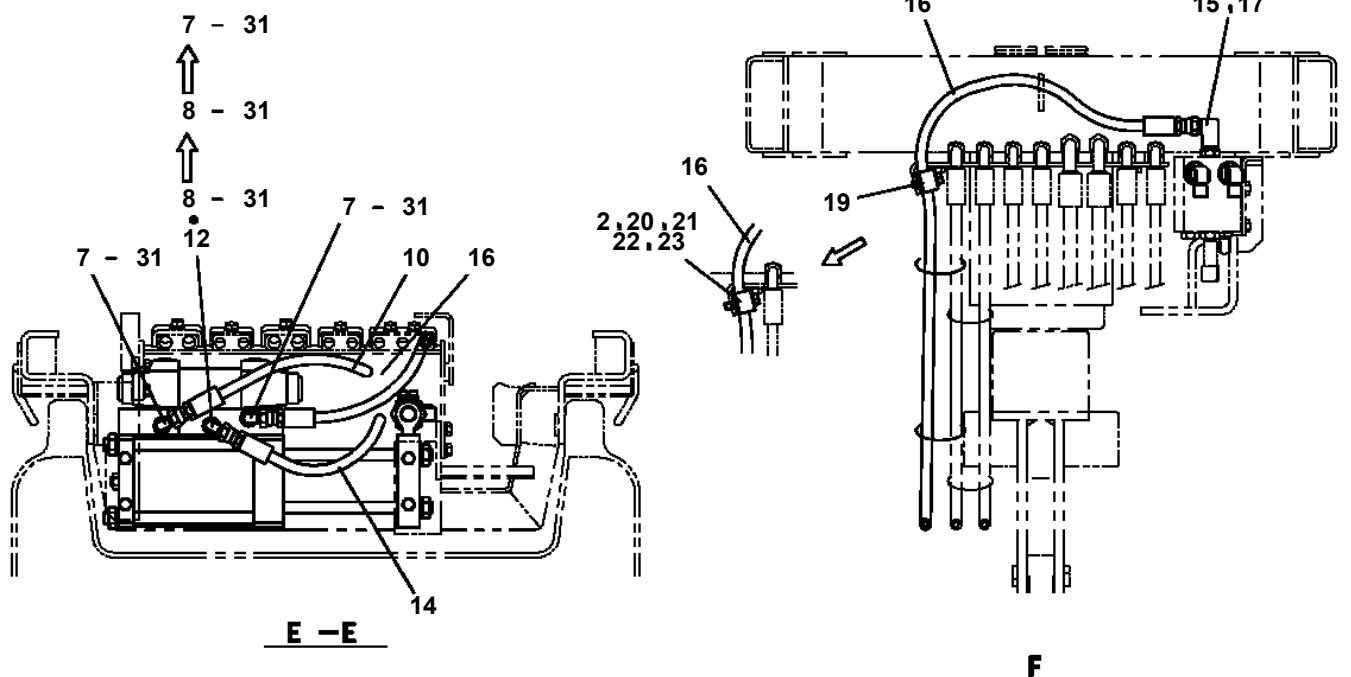
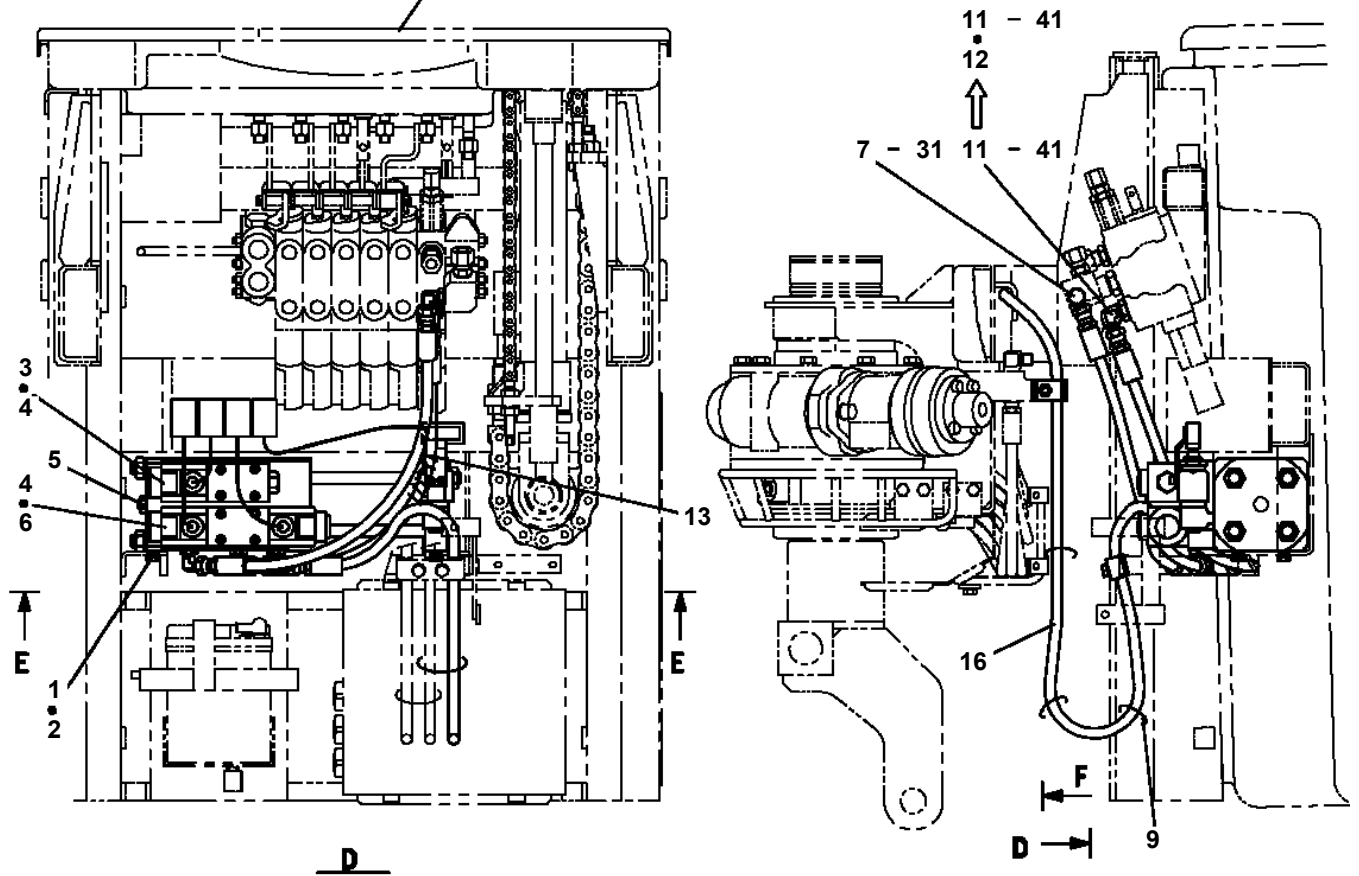
AT-146-1 42095100058 UPPER

Pos No.	Parts No	Parts Name	Qty	Unit	Technical Data	Serial No (Start)	Serial No (End)	Remarks	Pages
1	42737291100	SUPPORT	1						
3	90101206016	BOLT	1		M6X16				
4	90201200600	NUT	1		M6				
5	90302040601	WASHER,SPRING	1		6				
6	90303070601	WASHER,PLAIN	1		6				
7	82400000345	CHAIN (QTY=L)	2	M					
8	90101210020	BOLT	4		M10X20				
9	90302041001	WASHER,SPRING	4		10				
21	37000552090	SUPPORT	1						

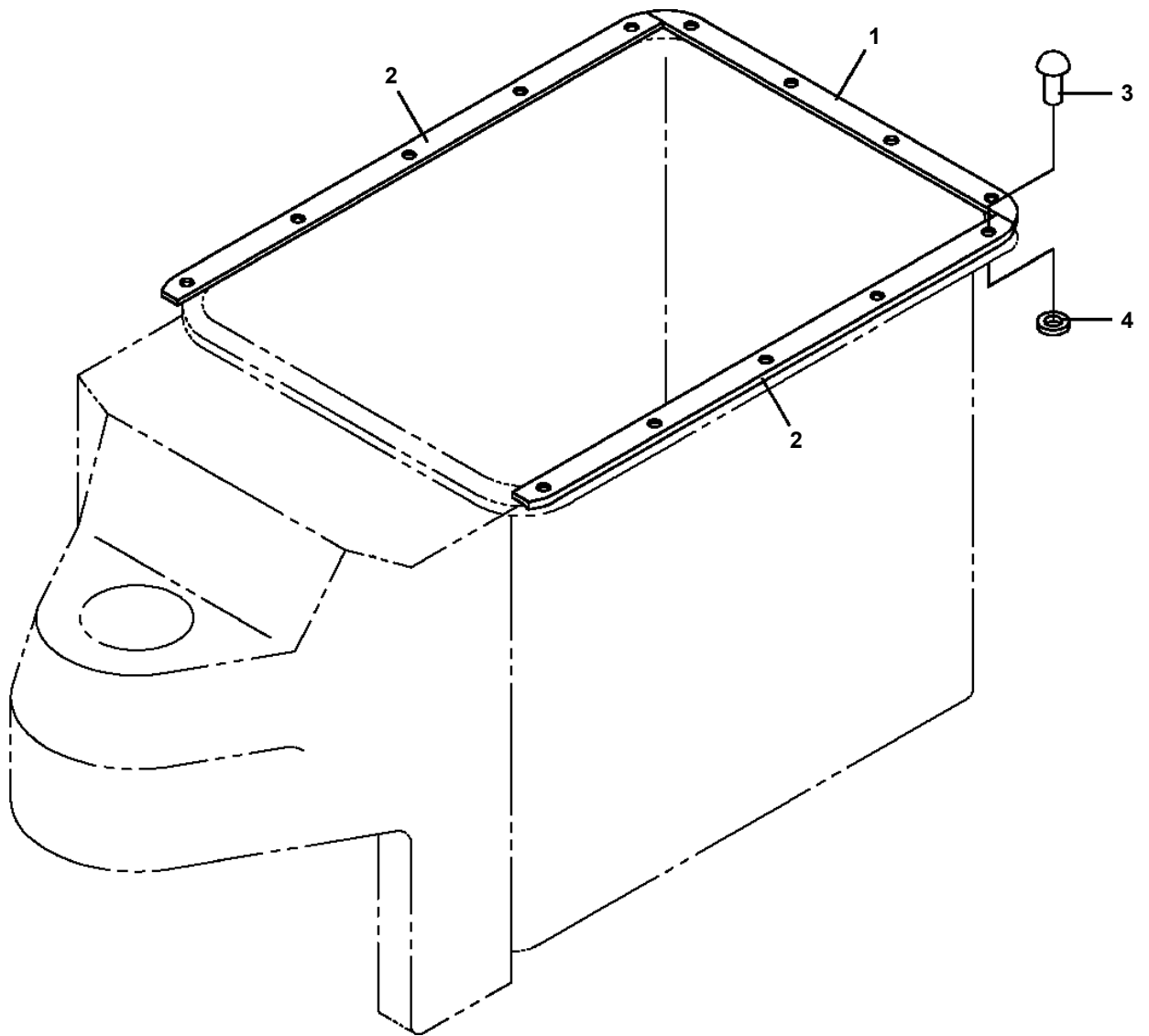
AT-146-1 42095100058 UPPER
 PY1160089-03 BOOSTER (AIR&ELECTRIC)

動力ジブの場合

SEE ELEC. ASSY (BUCKET)



**AT-146-1 42095100058 UPPER
PY1540007-00 COVER,BUCKET (INNER CASE)**



CLICK HERE TO **DOWNLOAD** THE COMPLETE MANUAL

- Thank you very much for reading the preview of the manual.
- You can download the complete manual from: www.heydownloads.com by clicking the link below



- Please note: If there is no response to CLICKING the link, please download this PDF first and then click on it.

CLICK HERE TO **DOWNLOAD** THE COMPLETE MANUAL