

AT-141-1 4204310006 UPPER

PD2000102-00 SWING UNIT

PG2000113-00 BOOM UNIT

PH1000545-00 SAFETY DEVICES (MOMENT LIMITER)

PJ3000360-00 BUCKET SYSTEM

PK2001406-00 FRAME UNIT

PO1000149-00 INDICATION PLATES

PY1000852-01 OPTIONS,2

PY1001576-00 OPTIONS,1

ASSEMBLY

CLICK HERE TO **DOWNLOAD** THE COMPLETE MANUAL

- Thank you very much for reading the preview of the manual.
- You can download the complete manual from: www.heydownloads.com by clicking the link below



- Please note: If there is no response to CLICKING the link, please download this PDF first and then click on it.

CLICK HERE TO **DOWNLOAD** THE COMPLETE MANUAL

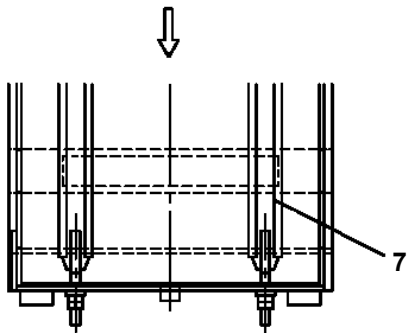
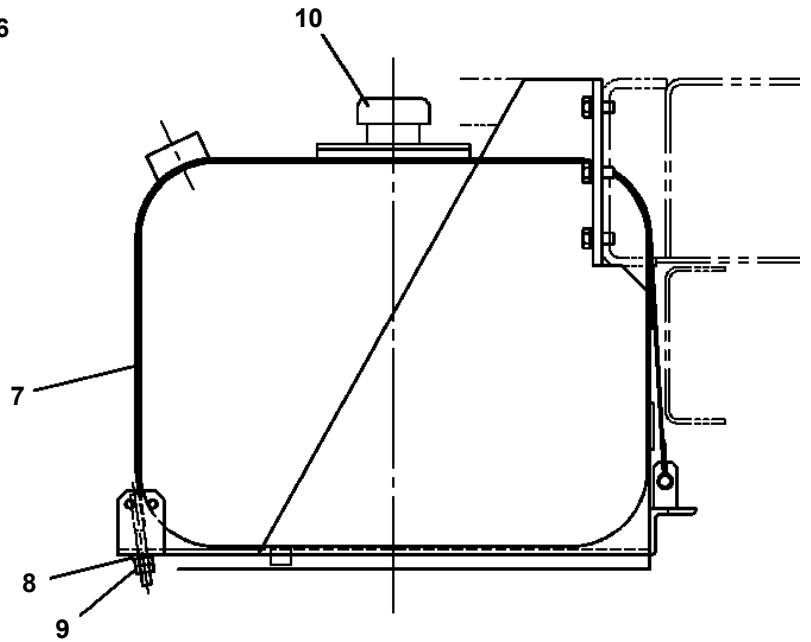
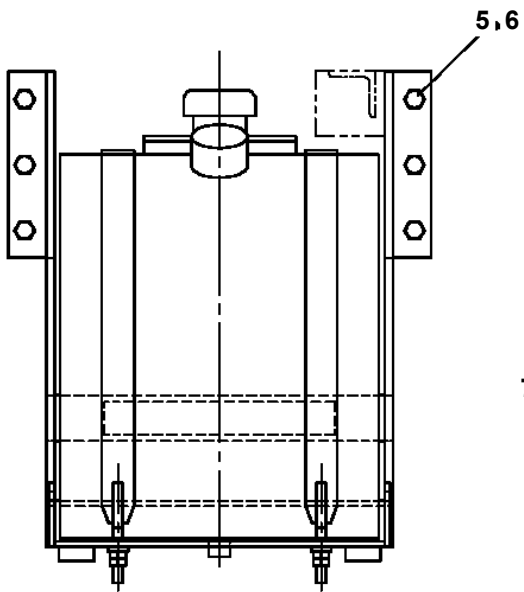
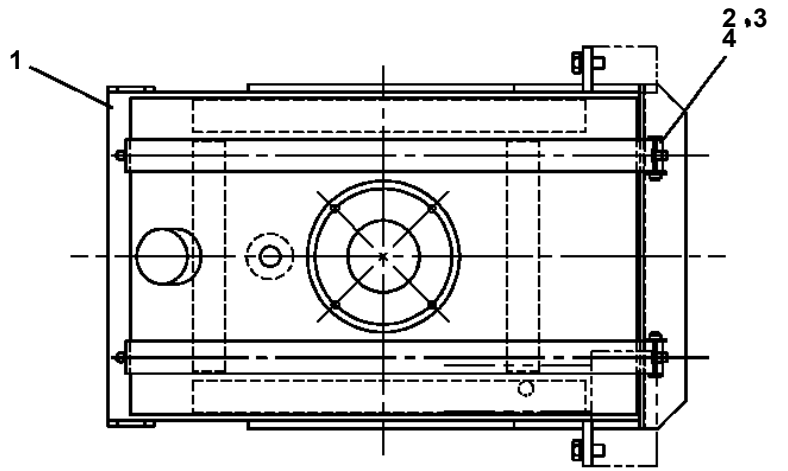
AT-141-1 4204310006 UPPER

Pos No.	Parts No	Parts Name	Qty	Unit	Technical Data	Serial No (Start)	Serial No (End)	Remarks
1	(*****)	FRAME (WITH MOTOR UNIT)	1					
2	(*****)	OUTRIGGER (FRONT)	1				225268	
	(*****)	OUTRIGGER (FRONT)	1			225269		
3	(*****)	OUTRIGGER (REAR)	1					
4	(*****)	PIPING,LOWER (FRAME)	1					
5	(*****)	OPE.ASSY,OUTRIGGER	1					
6	(*****)	ELEC.ASSY (SUB FRAME)	1				225195	
	(*****)	ELEC.ASSY (SUB FRAME)	1			225196		
7	(*****)	TANK,OIL (SUPPORT)	1				225488	
	(*****)	TANK,OIL (SUPPORT)	1			225489		
9	(*****)	ELEC.ASSY (POWER SELECT)	1					
31	(*****)	POWER SUPPLY (MOTOR UNIT)	1					
32	(*****)	POWER SUPPLY (BATTERY)	1					
33	(*****)	POWER SUPPLY (CHARGER)	1				225185	
	(*****)	POWER SUPPLY (CHARGER)	1			225186	225587	
	(*****)	POWER SUPPLY (CHARGER)	1			225588		
34	(*****)	POWER SUPPLY (WIRING)	1				225587	
	(*****)	POWER SUPPLY (WIRING)	1			225588		
35	(*****)	POWER SUPPLY (COVER)	1					

AT-141-1 4204310006 UPPER

PP5390001-00 PRUNER ASSY
PP5450003-00 PUMP,GREASE (240CC)
PS5150001-00 SHACKLE
PV1030001-00 SWITCH BOX (FOR BOOSTER)
PV1030109-00 SWITCH BOX (ELECTRIC BOOSTER, 3M,NANABOSI,SINKOU DENKI)
PV1030110-00 SWITCH BOX (ELECTRIC BOOSTER, 5M,NANABOSI,SINKOU DENKI)
PV1030111-00 SWITCH BOX (ELECTRIC BOOSTER, 8M,NANABOSI,SINKOU DENKI)
PV5240011-00 VALVE ASSY,SOLENOID
PV5240012-00 VALVE ASSY,SOLENOID
PW1010091-04 ACCESSORIES
PW1010092-00 ACCESSORIES (BUCKET INNER MAT)
PW1010381-00 ACCESSORIES (WRENCH)
PW1030015-01 TOOLS
PW1030047-01 TOOLS
PW1050018-01 WEDGE (STOPPER FOR TIRE/JUSTIN)
PW5110002-00 WEDGE (STOPPER FOR TIRE/WAZUMI)
PW5110003-00 WEDGE (STOPPER FOR TIRE/NAKAMURA KIKI)
PX1250065-00 COVER (OUTRIGGER SIDE)
PY1050000-00 CLAMP HEAD (IZUMI 12TON 2.5M)
PY1050001-01 CLAMP HEAD (IZUMI 8TON,2.5M)
PY1050002-00 CLAMP HEAD (IZUMI 12TON 3.5M)
PY1050004-00 CLAMP HEAD (O.D.K 7.5TON 3M)
PY1050005-00 CLAMP HEAD (O.D.K 10TON ELECTRIC)
PY1050006-00 CLAMP HEAD (IZUMI 7.5TON 3M ELECTRIC)
PY1050007-00 CLAMP HEAD (SANWA,12TON)
PY1050008-01 CLAMP HEAD (IZUMI 8TON 3.5M ELECTRIC)
PY1050012-00 CLAMP HEAD (SANWA,12TON,TITANIUM)
PY1060000-01 CUTTER HEAD (IZUMI 6.4TON AIR)
PY1060001-00 CUTTER HEAD (IZUMI 6.4TON 2.5M ELECTRIC)
PY1060002-00 CUTTER HEAD (SANWA 6.5TON)
PY1070000-00 ROPE (SAFETY,YELLOW:TD-TYPE)
PY1070001-00 ROPE (SAFETY,1.5M,WITH HOOK)
PY1080000-02 ARM (STD JIB/WITHOUT INSULATOR)
PY1080002-02 ARM
PY1080003-02 ARM
PY1080004-02 ARM
PY1080005-01 ARM (STD-JIB)
PY1080006-01 ARM
PY1080007-01 ARM (INSULATION JIB)
PY1080017-01 ARM (MECHANICAL ARM JIB)
PY1080023-00 ARM (REPLACE PLATE,SLIDE)
PY1080027-00 ARM (STD JIB/WITHOUT INSULATOR/PLASTIC)
PY1160030-03 BOOSTER (ELECTRICAL,WITHOUT LIFT)
PY1160032-03 BOOSTER (AIR,WITHOUT BUCKET LIFT)
PY1160052-03 BOOSTER (AIR,WITHOUT BUKET LIFT)
PY1160054-03 BOOSTER (ELECTRICAL,WITHOUT LIFT)
PY1170008-02 BOOSTER (AIR & ELEC.)
PY1170013-02 BOOSTER (24V.ELECTRIC TYPE.40TON)
PY1170016-01 BOOSTER (700KG/CM2)
PY1170018-03 BOOSTER
PY1180127-01 LAMP (FOR BUCKET OPERATION)
PY1180146-02 LAMP (FOR BUCKET OPERATION)
PY1180158-00 LAMP (AML)
PY1240003-00 CONTROL UNIT
PY1500005-02 SELECTOR,BOOSTER (ELECTRIC)
PY1500007-03 SELECTOR,BOOSTER (AIR.WITHOUT LIFT)
PY1500009-02 SELECTOR,BOOSTER (VALVE)
PY1500016-02 SELECTOR,BOOSTER (ELECTRIC)
PY1540007-00 COVER,BUCKET (INNER CASE)
PY1540010-02 COVER,BUCKET
PY1540010-02 COVER,BUCKET
PY1590000-02 HOSE,BOOSTER (WITH AIR BALLOON)
PY1590001-01 HOSE,BOOSTER (FEMALE-FEMALE,3M)
PY1590002-02 HOSE,BOOSTER (MAIL-FEMALE,3M)

AT-141-1 42043100006 UPPER
PB1130079-01 TANK,OIL (SUPPORT)



AT-141-1 4204310006 UPPER

Pos No.	Parts No	Parts Name	Qty	Unit	Technical Data	Serial No (Start)	Serial No (End)
131	89630602000	HOSE,VINYL			10X12,2M	225202	225453
	89630602000	HOSE,VINYL	1		10X12,2M	225454	
141	82100001990	BRUSH	17				225201
	82100001990	BRUSH	21			225202	225453
	82100001990	BRUSH	21			225454	225760
	82100001990	BRUSH	21			225761	
205	82114101060	CONNECTOR	3			225454	225760
	82114101060	CONNECTOR	3			225761	
206	82121102060	HOLDER	5			225454	225760
	82121102060	HOLDER	5			225761	
207	82111101010	TERMINAL	17			225454	225760
	82111101010	TERMINAL	17			225761	
208	82121101085	PLUG (AVS0.85)	35			225454	225760
	82121101085	PLUG (AVS0.85)	35			225761	
209	82114102020	CONNECTOR	2			225454	
210	82121102020	HOLDER	3			225454	225760
	82121102020	HOLDER	3			225761	
211	82111101510	TERMINAL	18			225454	225760
	82111101510	TERMINAL	18			225761	
212	82114101010	CONNECTOR	1			225454	
213	82111101020	TERMINAL	1			225454	
214	82121101125	PLUG (AVS1.25)	3			225454	225760
	82121101125	PLUG (AVS1.25)	3			225761	
215	82114102060	CONNECTOR	2			225454	
216	82121101009	PLUG (GREEN)	4			225454	225760
	82121101009	PLUG (GREEN)	4			225761	
227	90101204030	BOLT	2		M4X30	225939	
231	82104501120	SWITCH,LIMIT	1			225454	
264	82111101520	TERMINAL	2			225454	
266	82114101020	CONNECTOR (2P,MALE)	1			225454	
267	82114102010	CONNECTOR (1P FEMALE,HOUSING)	1			225454	
272	82114102040	CONNECTOR (4P,FEMALE)	1			225454	
273	82121102040	HOLDER (4P,BOTH)	1			225454	

AT-141-1 42043100006 UPPER

Pos No.	Parts No	Parts Name	Qty	Unit	Technical Data	Serial No (Start)	Serial No
2	36634515010	PLUG ASSY	1				
4	36634105020	VALVE,CONTROL (ELEVATING)	1				
5	36634105030	VALVE,CONTROL (SWING)	1				
6	36634105040	VALVE,CONTROL (TELESCOPING)	1				
24	91002905500	O-RING	4		1B G55		
32	91000501500	O-RING	1		AS568-015		
33	91002802200	O-RING	1		1B P22		
43	56051331100	SEAL,OIL	6				
52	36630045150	COVER	2				
55	91002801400	O-RING	3		1B P14		
64	91001100300	O-RING	2		1A P3		
100	36634100000	VALVE,MANUAL CONTROL (SWING FRAME)	1				

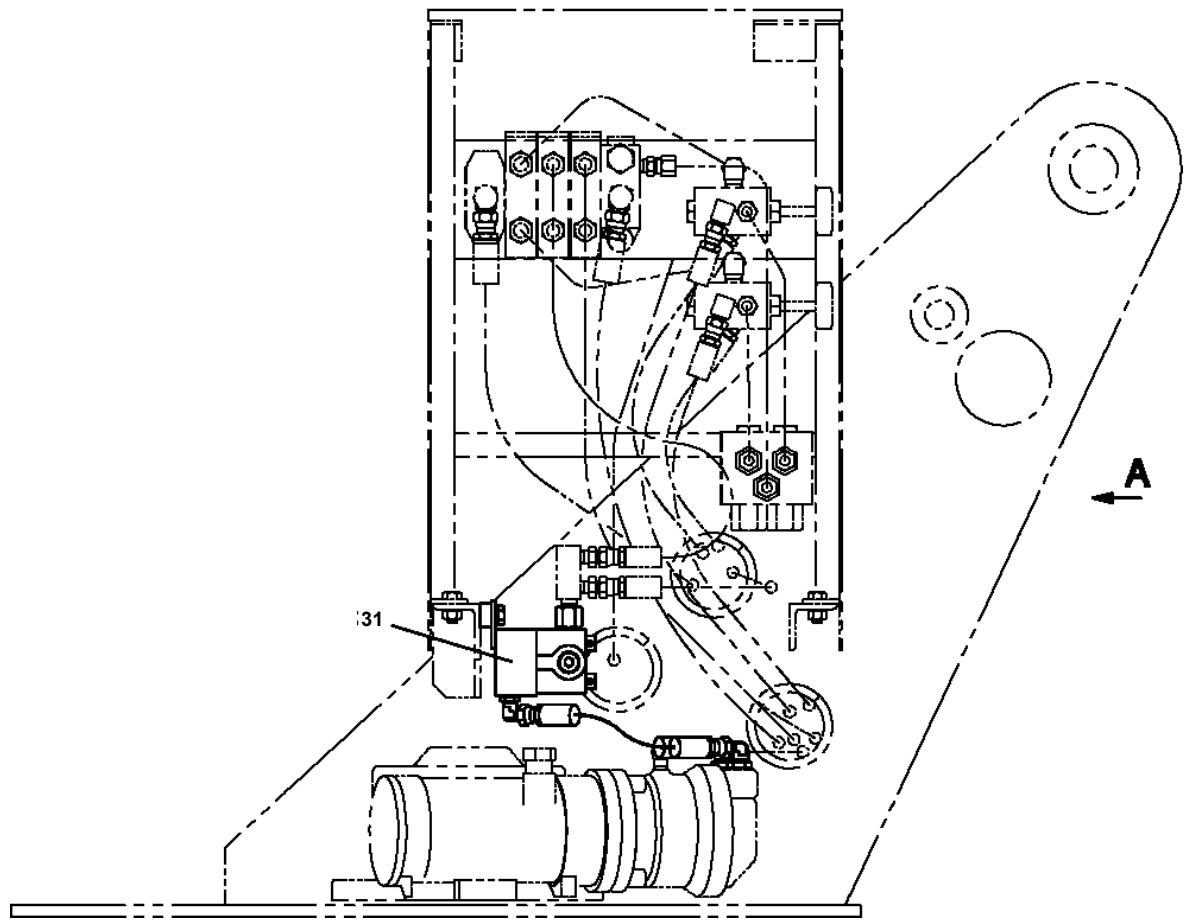
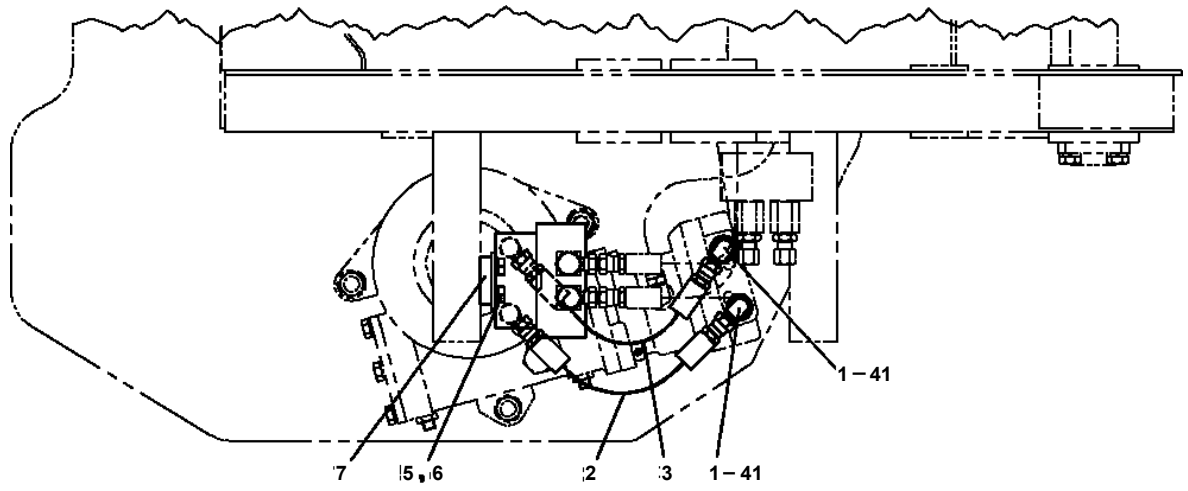
AT-141-1 42043100006 UPPER

Pos No.	Parts No	Parts Name	Qty	Unit	Technical Data	Serial No (Start)	Serial No (End)	Remarks	Pages
1	42420026100	COVER	1						
2	90101208025	BOLT	12		M8X25				
3	90302040801	WASHER,SPRING	12		8				
4	90303070801	WASHER,PLAIN	12		8				
5	42420026200	COVER	1						

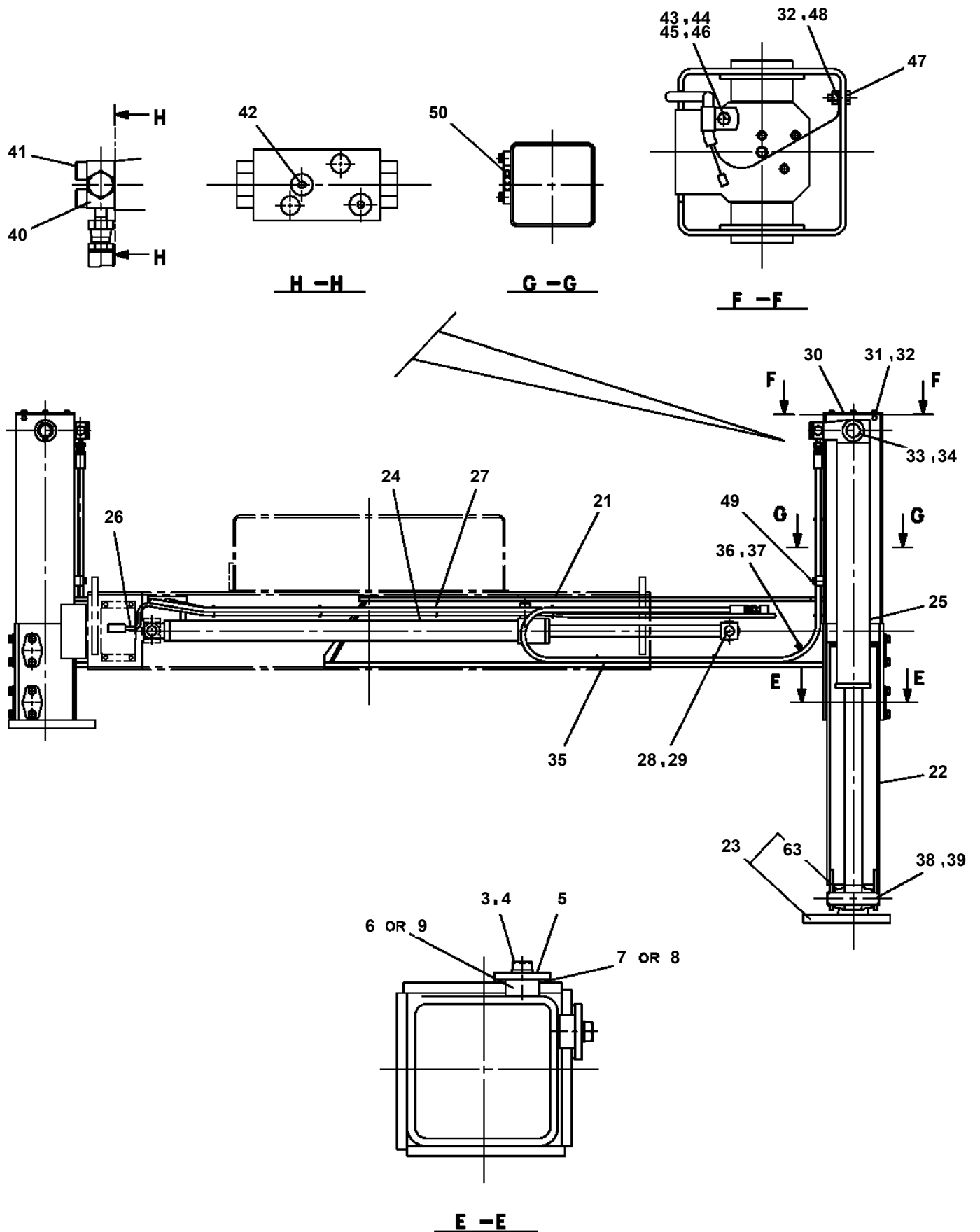
AT-141-1 4204310006 UPPER

Pos No.	Parts No	Parts Name	Qty	Unit	Technical Data	Serial No (Start)	Serial No (End)
1	36160200000	REEL,CORD (FOR BATTERY CHARGER)	1				
2	90101210025	BOLT	4		M10X25		
3	90302041001	WASHER,SPRING	4		10		
4	90201201000	NUT	4		M10		
5	42420084801	SUPPORT	1				
6	90101208016	BOLT	11		M8X16		226349
	90101208016	BOLT	13		M8X16	226350	
7	90302040801	WASHER,SPRING	30		8		226349
	90302040801	WASHER,SPRING	32		8	226350	
8	42420044502	COVER ASSY	1				
9	42420044160	CHARGER ASSY	1				
11	90201200800	NUT	12		M8		226349
	90201200800	NUT	14		M8	226350	
12	82100002006	CLAMP	1		WR10		
13	90101208045	BOLT	4		M8X45		
14	90201200600	NUT	1		M6		
15	90302040601	WASHER,SPRING	5		6		
16	91810130240	FASTENER	10				
17	82100002669	BREAKER	1				
18	80172304010	SCREW,MACHINE	2		M4X10		
19	90302040401	WASHER,SPRING	2		4		
20	82100002040	CLAMP	2		WE15		
21	90101206010	BOLT	4		M6X1.0		
22	42420044060	SUPPORT	2				
23	42420044070	PLATE	8				
24	42420046200	CONVERTER (FAMOTH)	1				
25	90101208020	BOLT	8		M8X20		
26	90303070801	WASHER,PLAIN	14		8		
27	42420044900	PLATE	1				
28	90101208012	BOLT	5		M8X12		
29	42831380050	PLATE	2				
30	91810130270	FASTENER	1			225977	
41	42420044701	COVER	1				
42	42420044602	COVER	1				
43	42420044801	COVER	1				
44	90101206010	BOLT	6		M6X1.0		
45	90302040601	WASHER,SPRING	6		6		
46	80172303008	SCREW,MACHINE	4		M3X8		
47	90302040301	WASHER,SPRING	8		3		
48	90201200300	NUT	6		M3		
49	82464056700	HINGE	2				
50	82400000318	CATCH	1				
51	90303070501	WASHER,PLAIN	8		5		
52	80172305014	SCREW,MACHINE	4		M5X14		
53	90302040501	WASHER,SPRING	4		5		
54	90201200500	NUT	4		M5		
61	42420044302	SUPPORT	1				
62	42420084042	HARNESS	1				
73	80172303010	SCREW,MACHINE	4		M3X10		
75	90303070301	WASHER,PLAIN	4		3		
77	82100002219	METER,HOUR	1				
91	82100001962	VOLTMETER	1				
92	82100001361	SWITCH,TOGGLE	1				
93	82100000745	FUSE	1		10A,6.5X30		
94	82100002486	LAMP,PILOT	1				

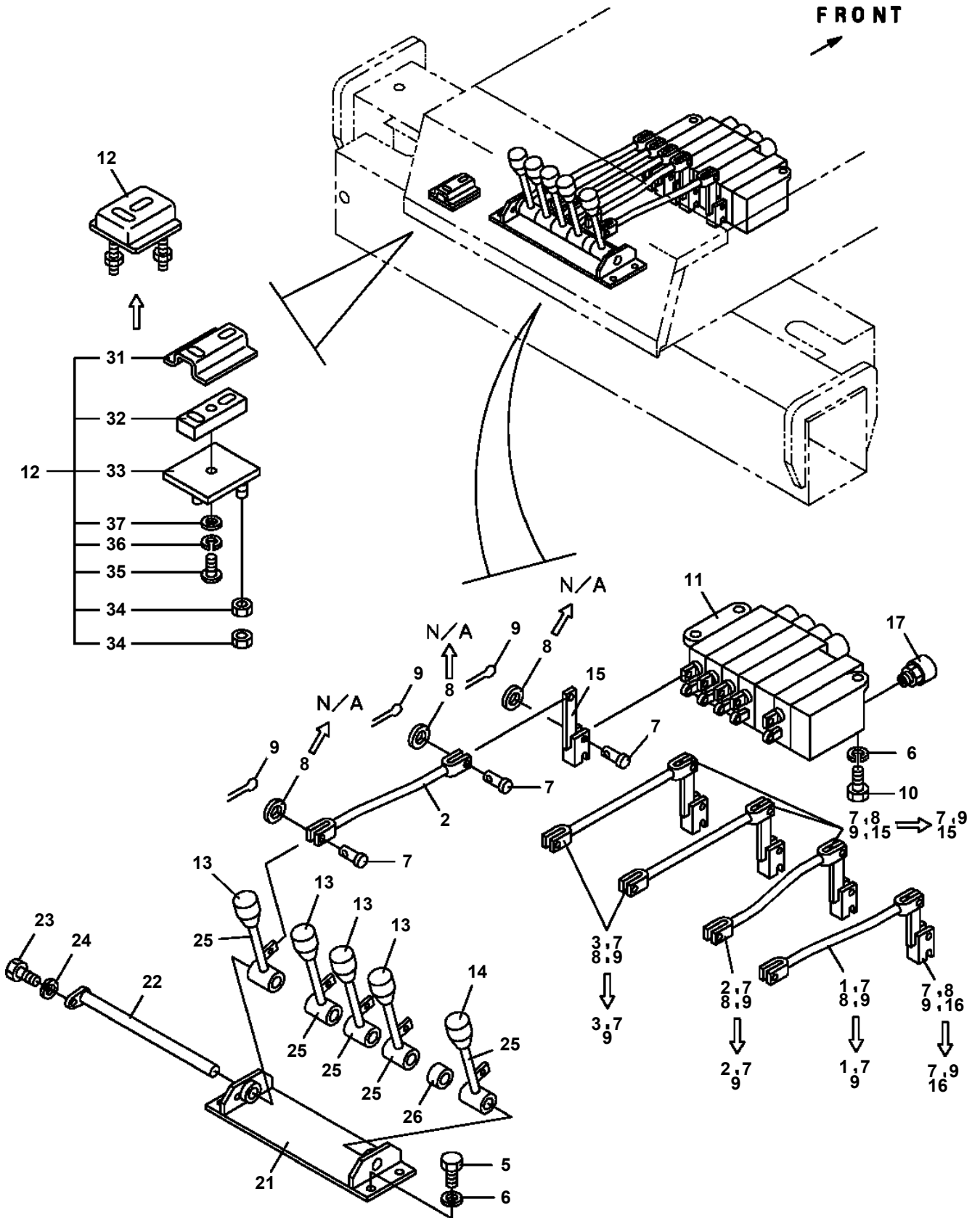
AT-141-1 42043100006 UPPER
PB1400398-00 PIPING,UPPER



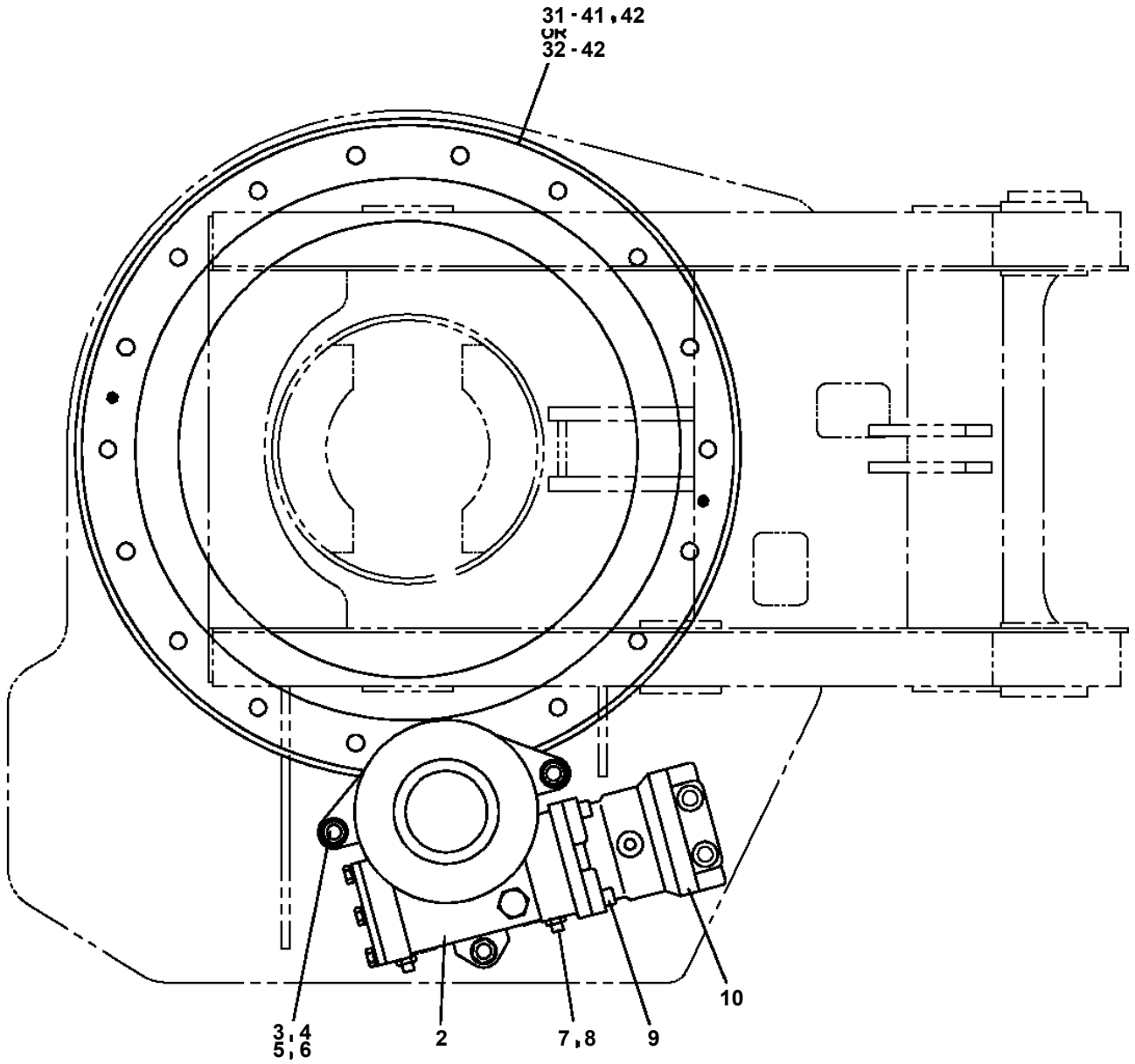
AT-141-1 42043100006 UPPER
PC1010187-01 OUTRIGGER (REAR)



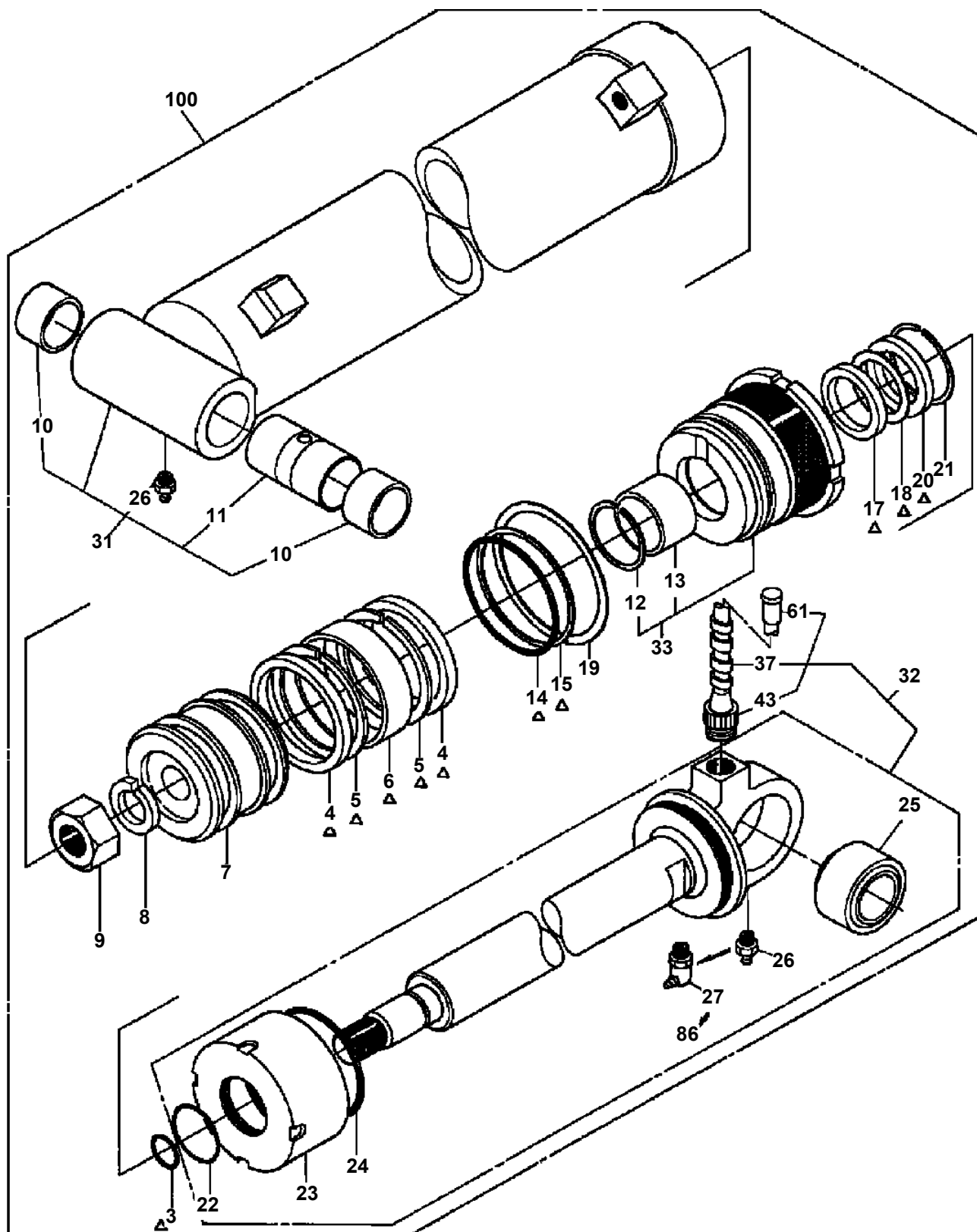
**AT-141-1 42043100006 UPPER
PC1100091-04 OPE.ASSY,OUTRIGGER**



**AT-141-1 42043100006 UPPER
PD1010105-01 REDUCER, SWING SPEED**

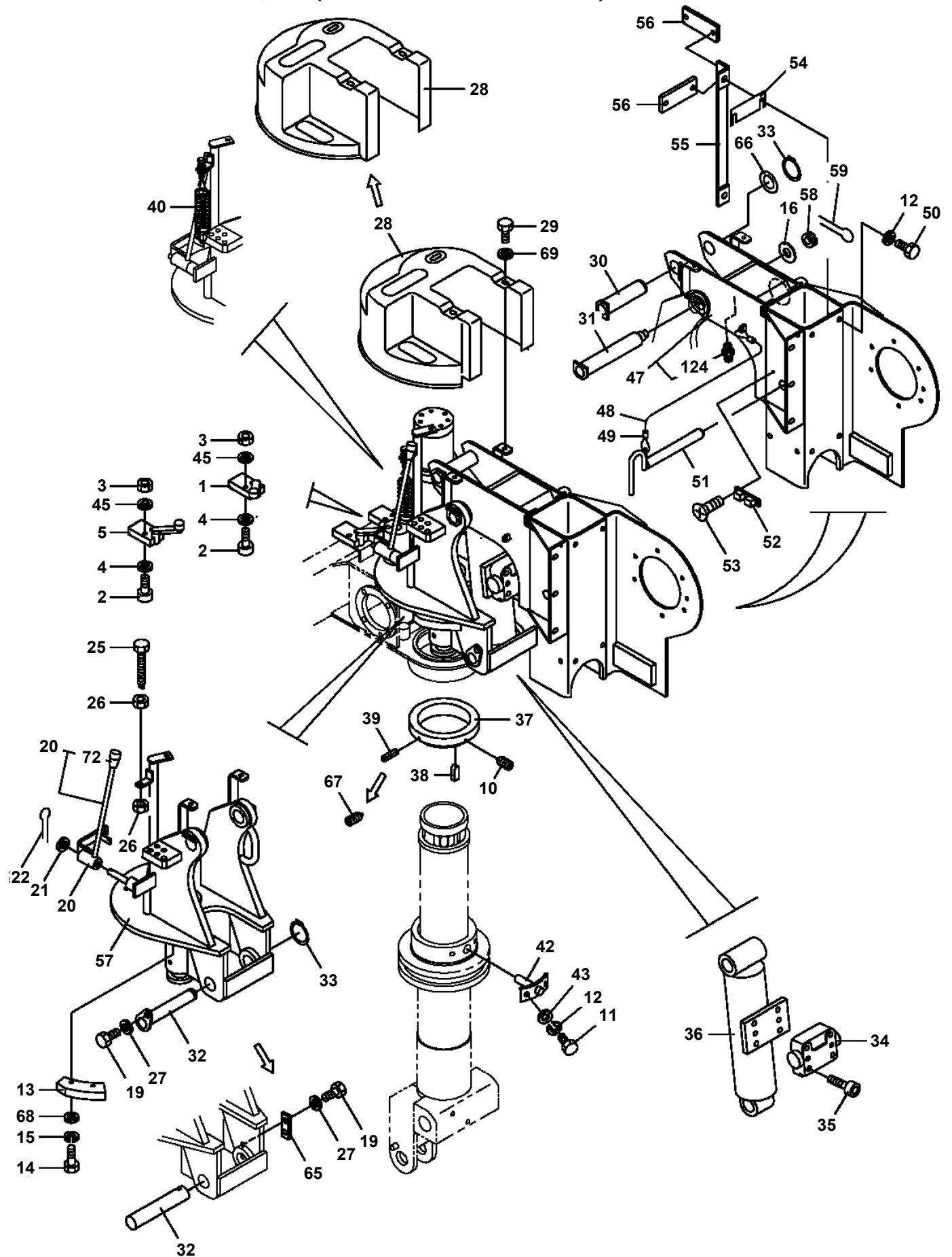


**AT-141-1 42043100006 UPPER
PE1050009-06 CYLINDER,LEVELING (LOWER)**

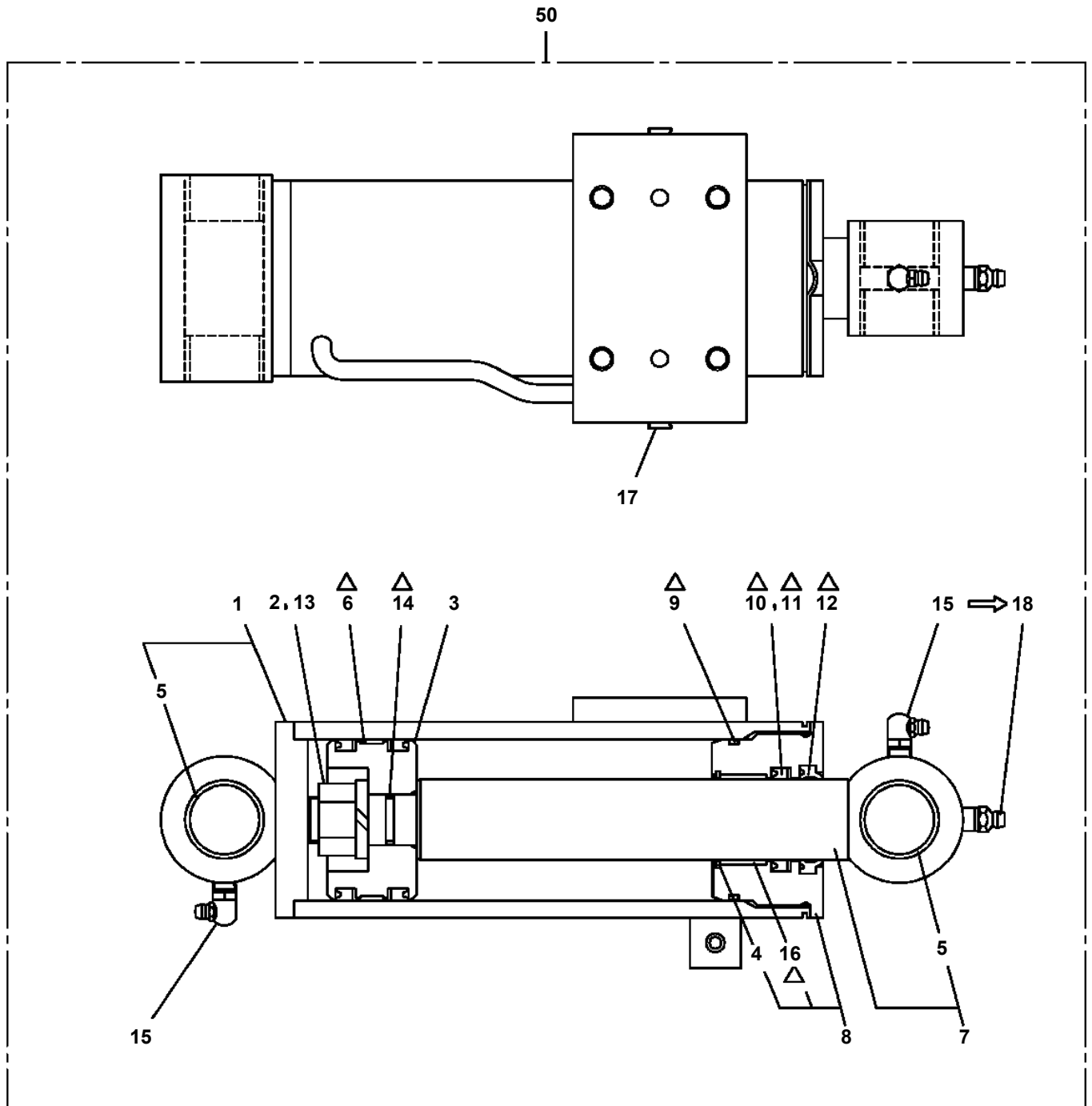


△ : PACKING SET KEY NO.91 (KEY NO.3, 4, 5, 6, 14, 15, 17, 18, 20)

**AT-141-1 42043100006 UPPER
PF1350016-03 WINCH, JIB (SUPPORT. POWER JIB)**

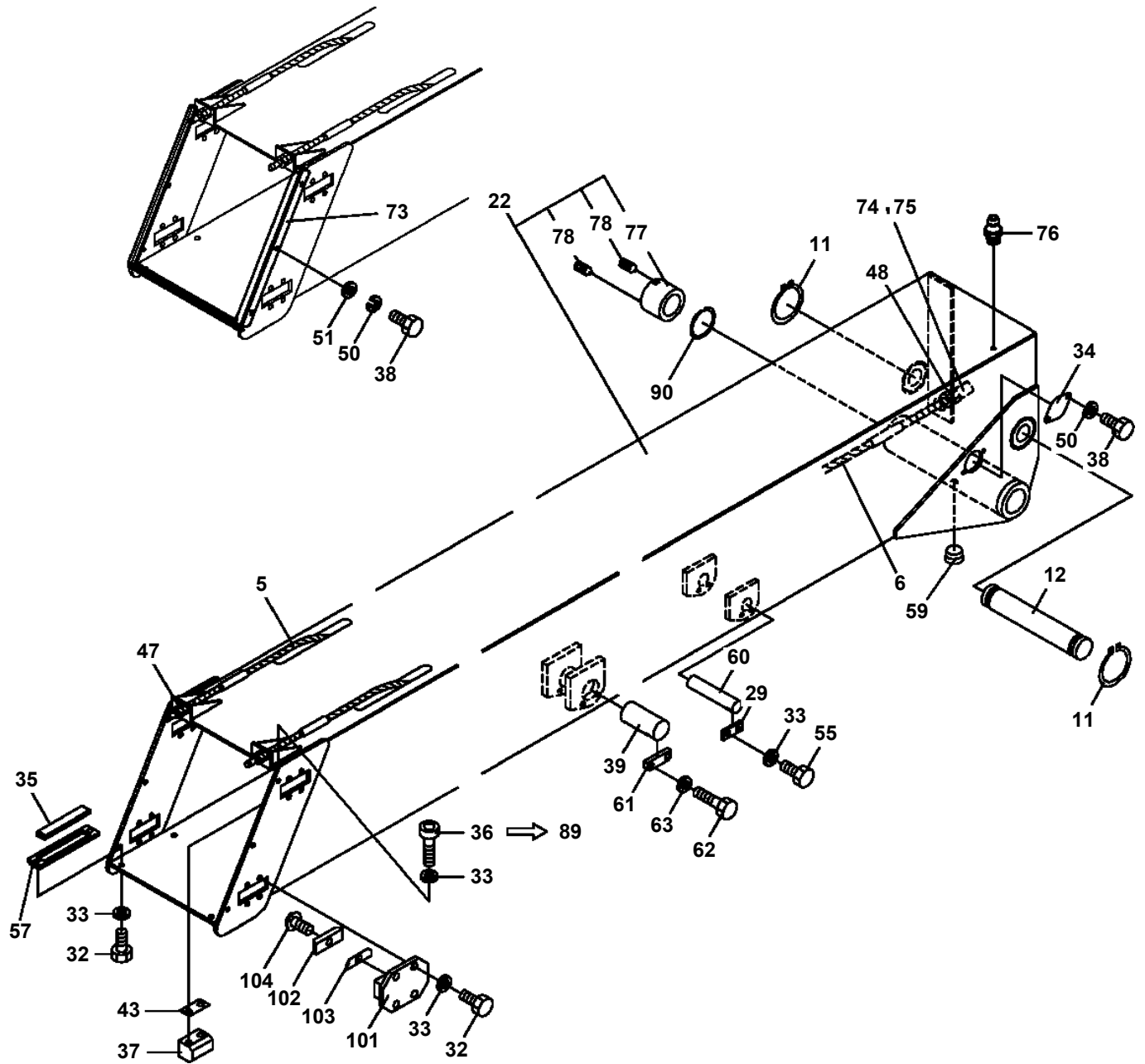


**AT-141-1 42043100006 UPPER
PF1360002-03 CYLINDER,WINCH JIB (POWER)**

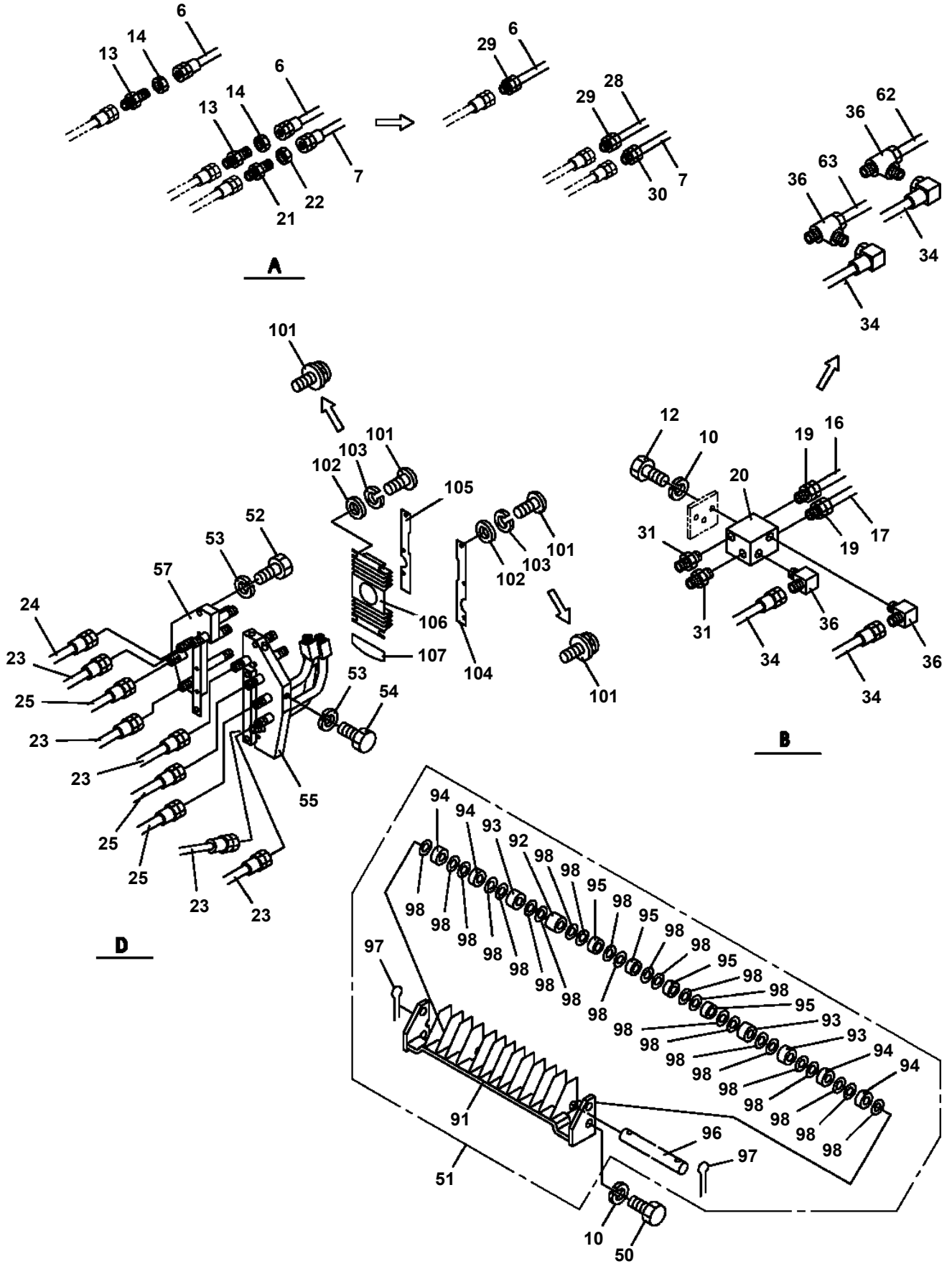


△:PACKING SET KEY NO.30 (KEY NO.6,9,10,11,12,14,16)

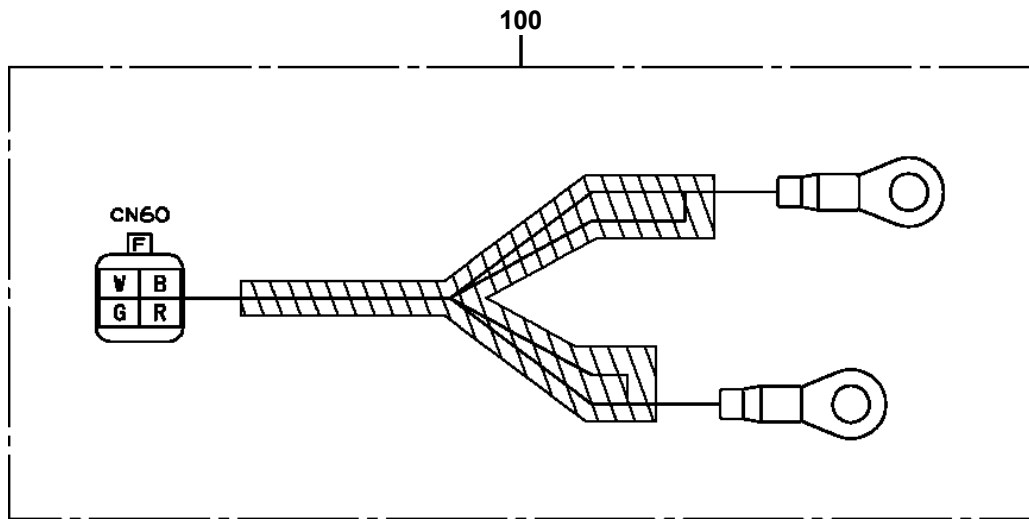
AT-141-1 42043100006 UPPER
PG1010243-03 BOOM



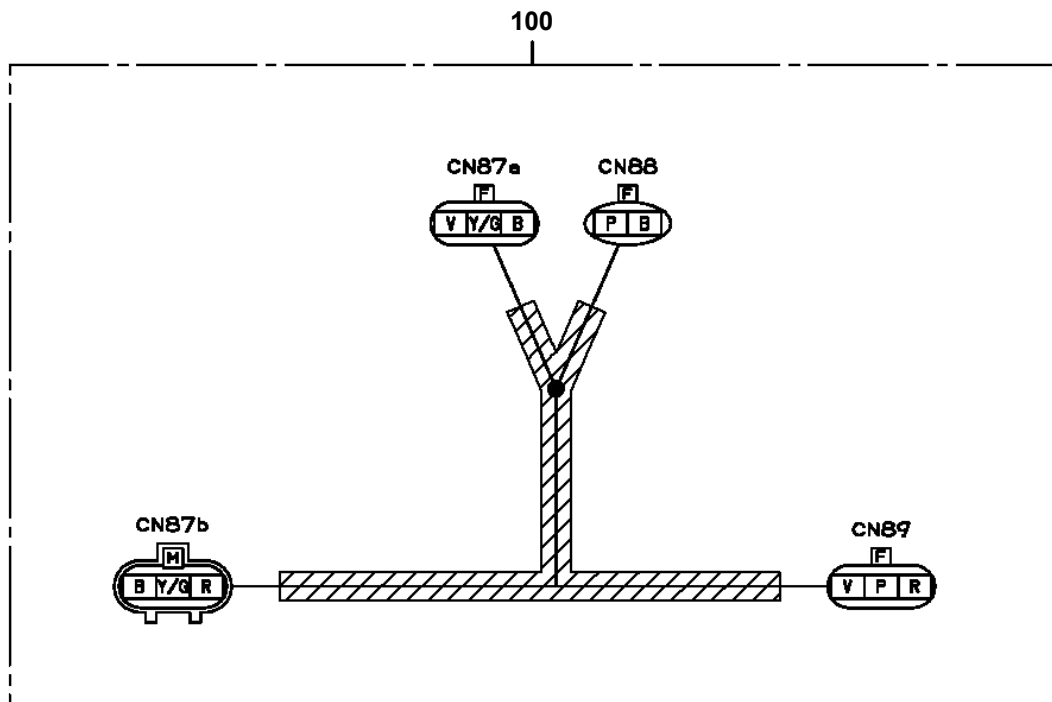
**AT-141-1 4204310006 UPPER
PG1200070-04 PIPING,TELESCOPING**



AT-141-1 42043100006 UPPER
PH5031064-00 HARNESS

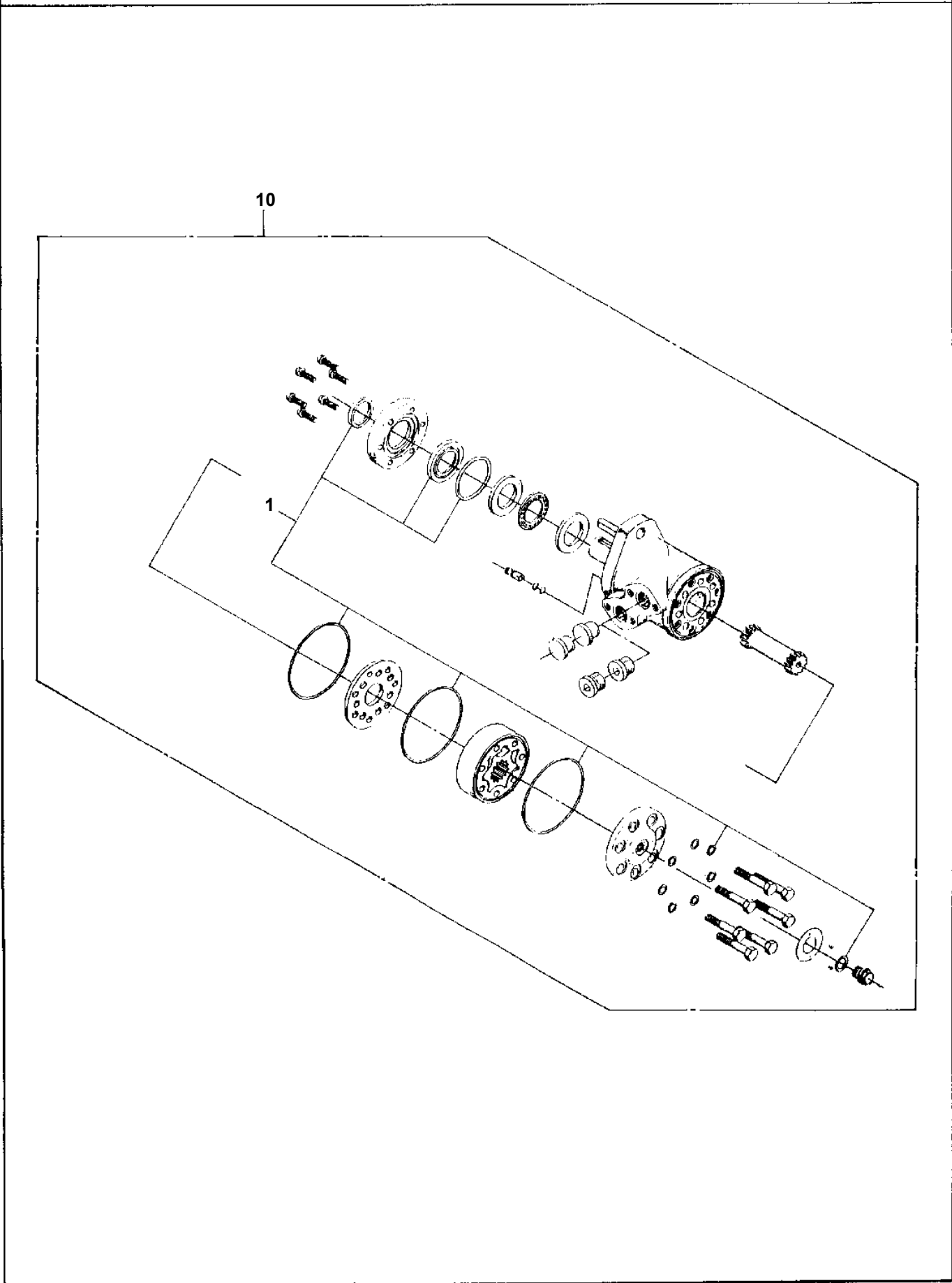


AT-141-1 42043100006 UPPER
PH5032826-00 HARNESS



**AT-141-1 42043100006 UPPER
PI1010079-00 MOTOR, HYDRAULIC**

Assembly Name MOTOR, HYDRAULIC



AT-141-1 4204310006 UPPER

Pos No.	Parts No	Parts Name	Qty	Unit	Technical Data	Serial No (Start)	Serial No (End)	Remarks	Pages
3	36640765100	O-RING	2						
4	36640765110	RING,BACKUP	2						
5	36601615010	SPRING	2						
6	36601615020	SHIM	N						
7	36601615030	PLUG	2						
8	91000591200	O-RING	2		AS568-912				
10	36601615040	SPRING	2						
11	36601615050	PLUG	2						
12	91000590800	O-RING	2		AS568-908				
20	36601610001	VALVE,RELIEF	1						

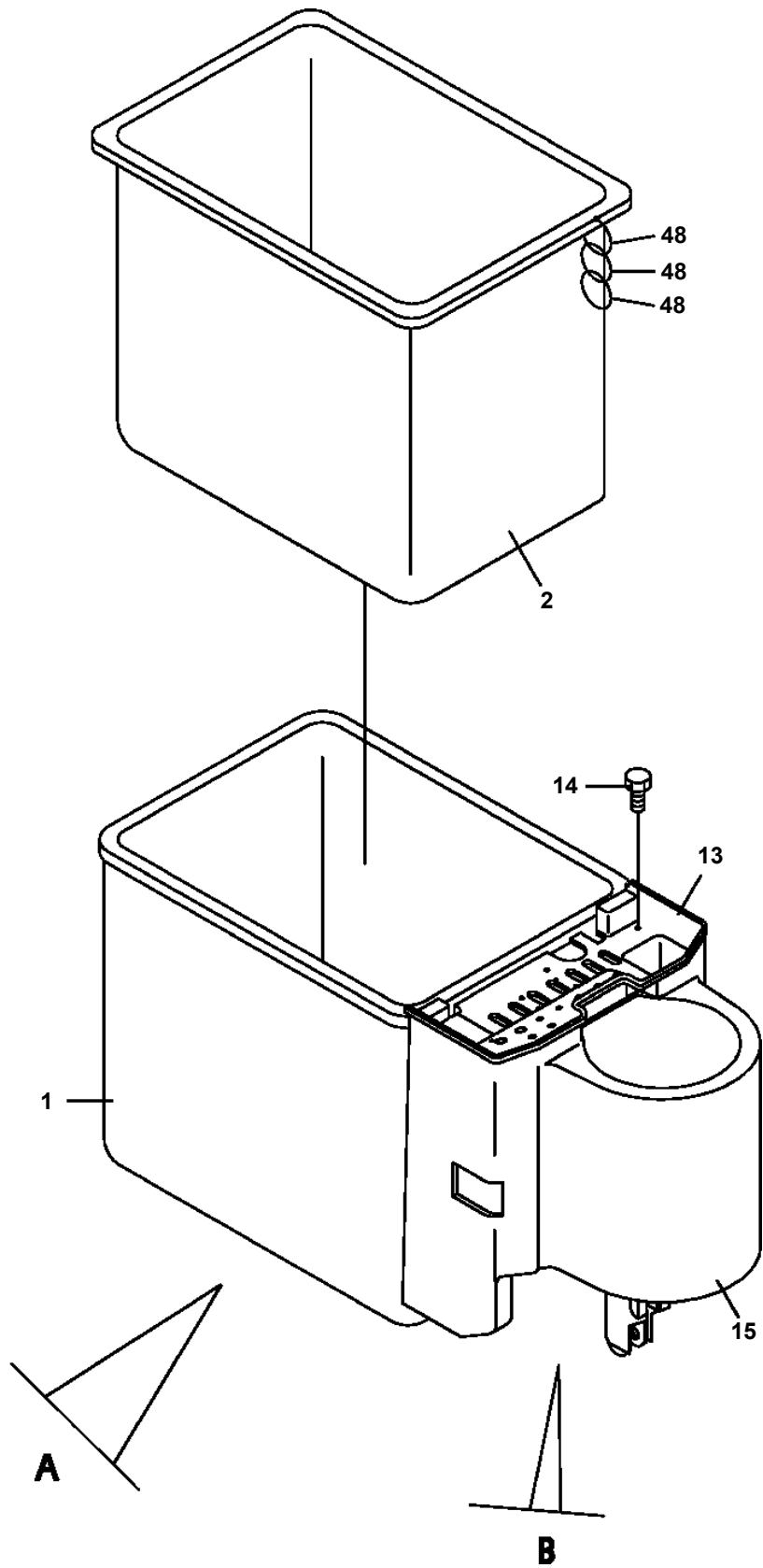
AT-141-1 4204310006 UPPER

Pos No.	Parts No	Parts Name	Qty	Unit	Technical Data	Serial No (Start)	Serial No (End)	Remarks	Pages
1	36620650000	VALVE,CHECK	1						
2	36620030050	PLUG	1						
4	91002801000	O-RING	1		1B P10				
5	52255101000	SPRING	1						
7	91002801400	O-RING	2		1B P14				
8	36620030010	PLUG	1		PF3/8				
9	91002801200	O-RING	2		1B P12				

AT-141-1 4204310006 UPPER

Pos No.	Parts No	Parts Name	Qty	Unit	Technical Data	Serial No (Start)	Serial No (End)	Remark
3	91002801400	O-RING	3		1B P14			
7	36601665020	SPRING	1					
10	91001001000	O-RING	1		1A S10			
11	36601665030	SPRING	1					
13	91002803400	O-RING	1		1B P34			
14	36601665050	O-RING	1		P25			
15	91410002500	RING,BACKUP	1		P25			
18	91002802600	O-RING	1		1B P26			
19	91001301600	O-RING	1		WP16			
20	91002801000	O-RING	1		1B P10			
21	91410001000	RING,BACKUP	1		P10			
50	36601660001	VALVE,COUNTERBALANCE	1					

**AT-141-1 42043100006 UPPER
PJ3010094-03 BUCKET (WITHOUT LIFT.POWER JIB)**



CLICK HERE TO **DOWNLOAD** THE COMPLETE MANUAL

- Thank you very much for reading the preview of the manual.
- You can download the complete manual from: www.heydownloads.com by clicking the link below



- Please note: If there is no response to CLICKING the link, please download this PDF first and then click on it.

CLICK HERE TO **DOWNLOAD** THE COMPLETE MANUAL

AT-141-1 4204310006 UPPER

Pos No.	Parts No	Parts Name	Qty	Unit	Technical Data	Serial No (Start)	Serial No (End)	Remarks	Pages
1	42620821001	FRAME ASSY	1						
2	42620647000	COVER ASSY	1						
3	42620010300	COVER	4						
4	90101206012	BOLT	8		M6X12				
5	90302040601	WASHER,SPRING	8		6				
6	90171116115	BOLT	6				225966		
7	42620640020	PLATE	6						
8	90201701600	NUT	18		M16				
9	90303501601	WASHER,PLAIN	18		16				
10	90171116110	BOLT	12		M16X110		225966		
	37001500090	BOLT	18		M16X110	225967			
11	37000127530	PIN	4						
12	82400000393	INSULATOR	1						
13	80172303014	SCREW,MACHINE	1		M3X14				
14	90303070301	WASHER,PLAIN	1		3				
15	80175305016	SCREW,MACHINE	6		M5X16				
16	90201200500	NUT	6		M5				
17	90302040501	WASHER,SPRING	6		5				
18	80136332040	PIN,SPLIT	8		3.2X40				
29	42620645900	PIN	4						
41	42620647100	COVER	1				226175		
	42621680200	COVER	1			226176			
42	80147370640	RIVET	4				226175		
	80192485012	SCREW,MACHINE	4		M5X12	226176			
43	82400000314	HINGE	2						
44	82400000357	CATCH	1						
45	90201200500	NUT	4		M5	226176			
46	37000568430	PLATE	1			226501			

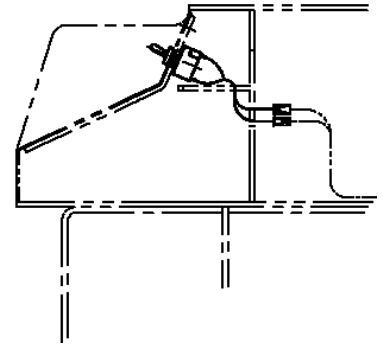
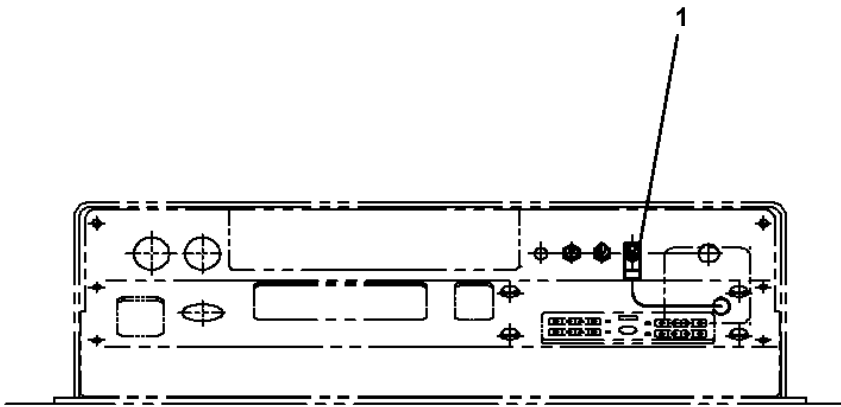
AT-141-1 4204310006 UPPER

Pos No.	Parts No	Parts Name	Qty	Unit	Technical Data	Serial No (Start)	Serial No
1	31320830010	KNOB (BLACK)	3				
2	37001601520	NUT	3		M12		
3	42320400100	LEVER	1				
4	42320400200	LEVER	1				
5	42320400300	LEVER	1				
6	37000145050	PIN	1				
7	80720104020	PIN,SPRING	2		4X20		
8	36634100000	VALVE,MANUAL CONTROL (SWING FRAME)	1				225453
	36634100001	VALVE,SELECTOR	1			225454	226132
	36634100002	VALVE,MANUAL CONTROL	1			226133	
9	90131508020	BOLT,HEXAGON SOCKET	3		M8X20		
10	82100002342	SWITCH,LIMIT (W)	2				225453
	82104501120	SWITCH,LIMIT	6			225454	226132
	82104501180	SWITCH,LIMIT	6			226133	
11	82100002343	SWITCH,LIMIT (R)	4				225453
12	42320402000	SUPPORT	1				225715
13	90101210016	BOLT	4		M10X16		225518
	90101210025	BOLT	4		M10X25	225519	
14	90302041001	WASHER,SPRING	4		10		
15	37000105610	PIN	3		L=18		
16	80136320010	PIN,SPLIT	3		2X10		
17	90201201000	NUT	4		M10	225519	
18	42320402001	SUPPORT	1			225716	

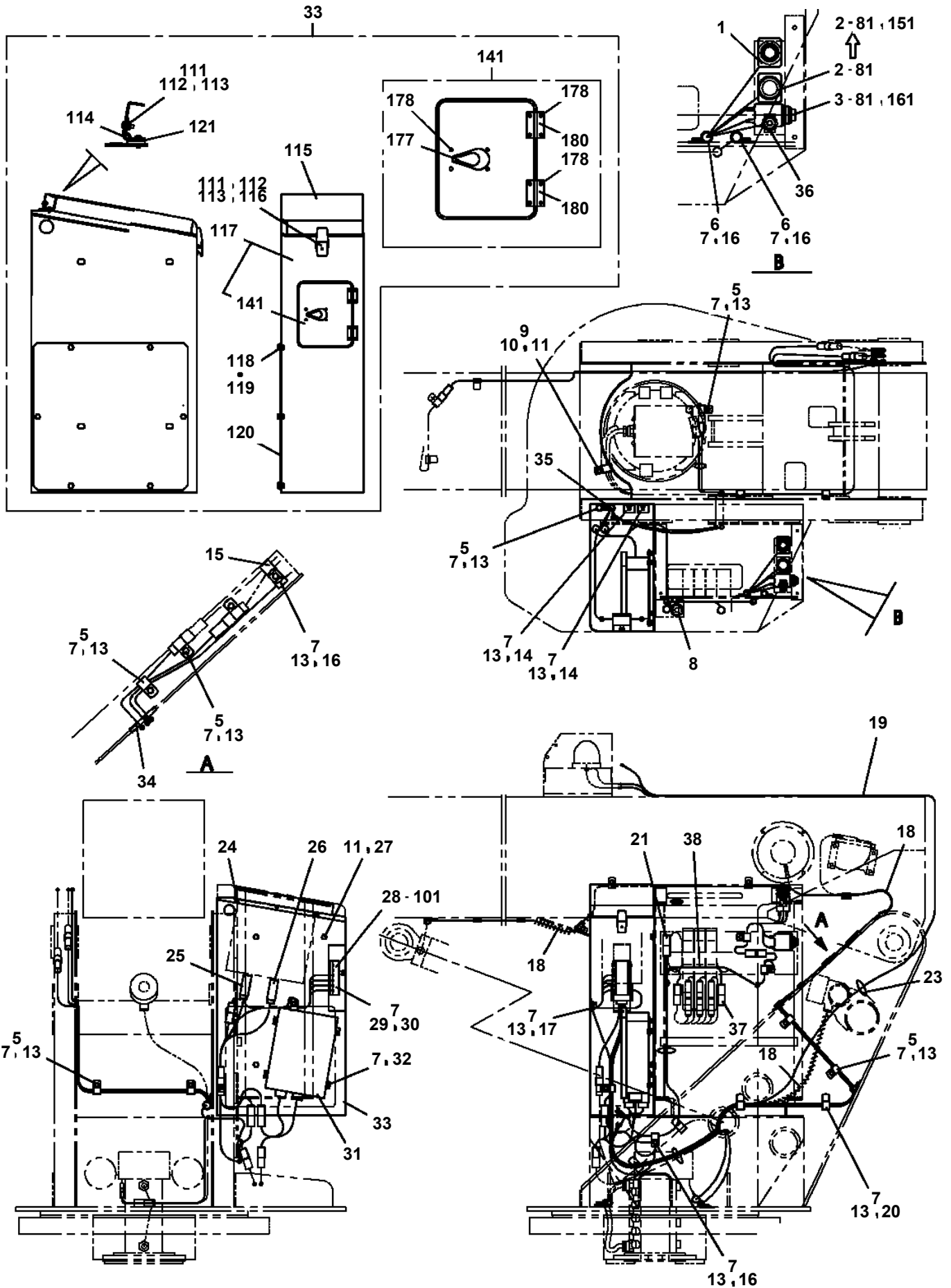
AT-141-1 42043100006 UPPER

Pos No.	Parts No	Parts Name	Qty	Unit	Technical Data	Serial No (Start)	Serial No (End)
65	90302040301	WASHER,SPRING	2		3		
66	42650335310	PLATE,NAME	1				
71	82100002469	BATTERY	1				
73	82100001261	CAP	1				
81	82100002626	CONNECTOR	1				
82	82114101040	CONNECTOR (4P,MALE)	1			225454	
102	42350080410	HARNESS	1				225454
	42350200310	HARNESS	1			225454	
121	82198300402	KNOB (RED)	1				225454
131	82101350403	BUTTON	1			225454	
141	82198300503	LENS	2			225454	
151	82100002836	BULB,LAMP	1				

**AT-141-1 42043100006 UPPER
PN1010739-00 ELEC.ASSY (POWER SELECT)**

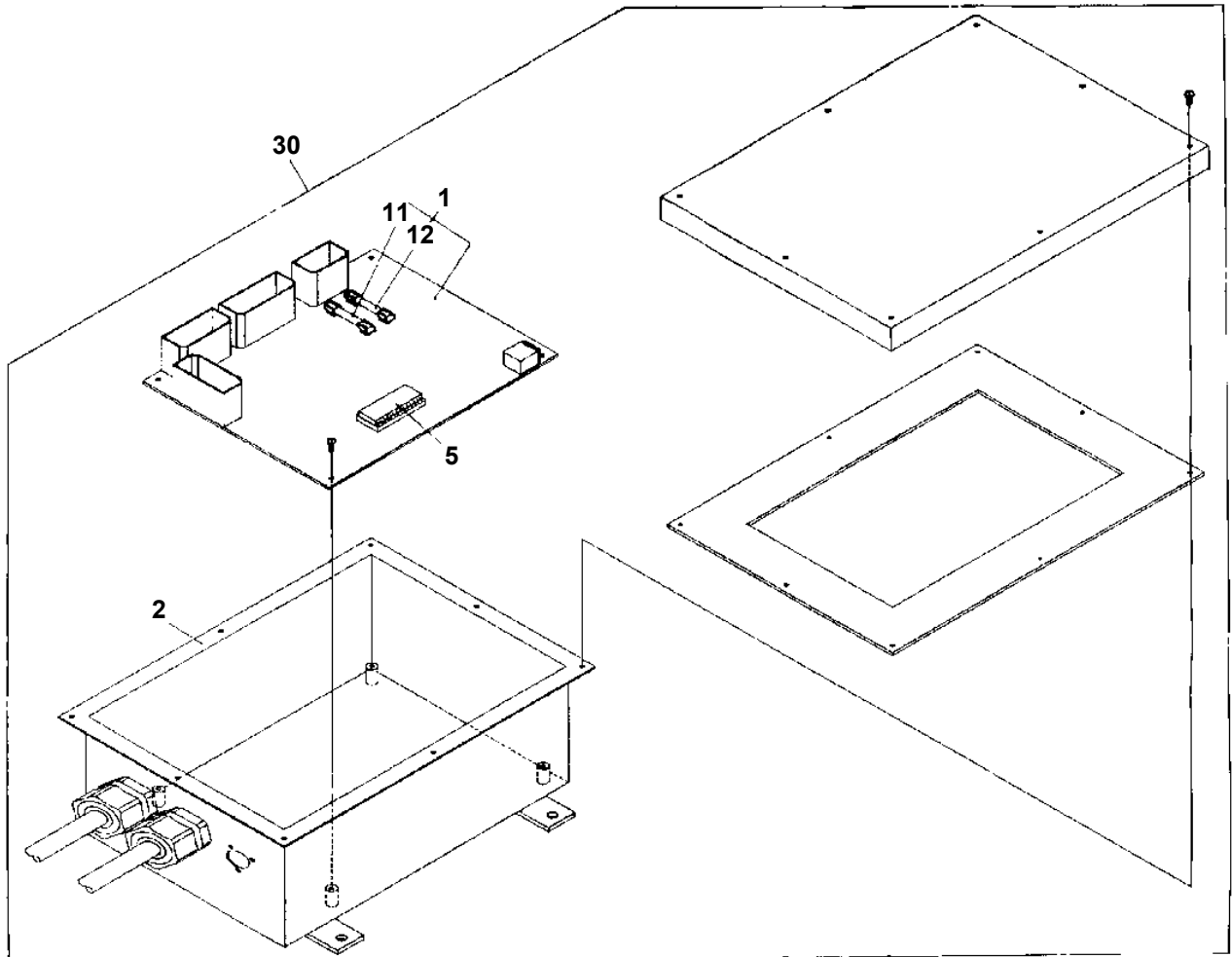


**AT-141-1 42043100006 UPPER
PN1011536-02 ELEC.ASSY (SWING FRAME)**

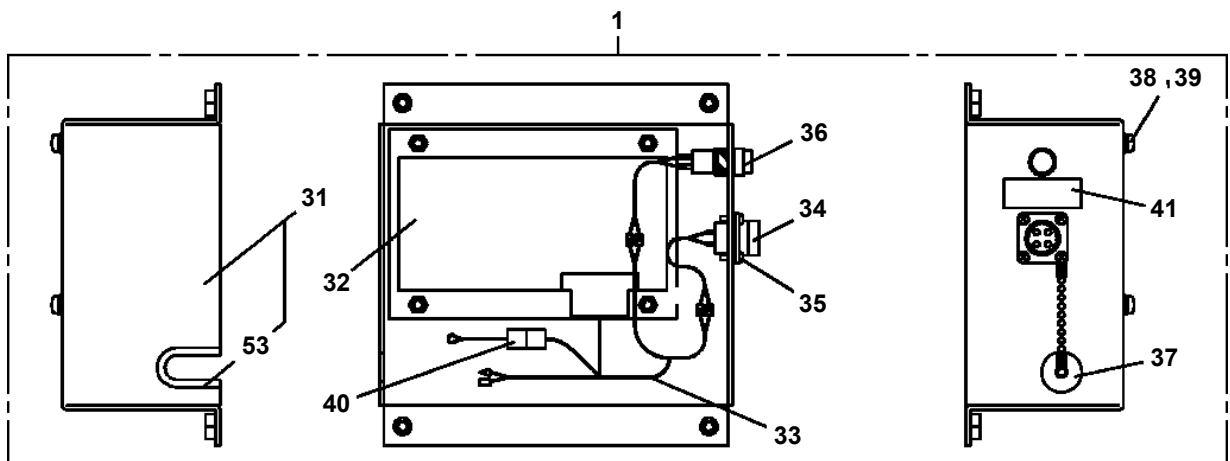
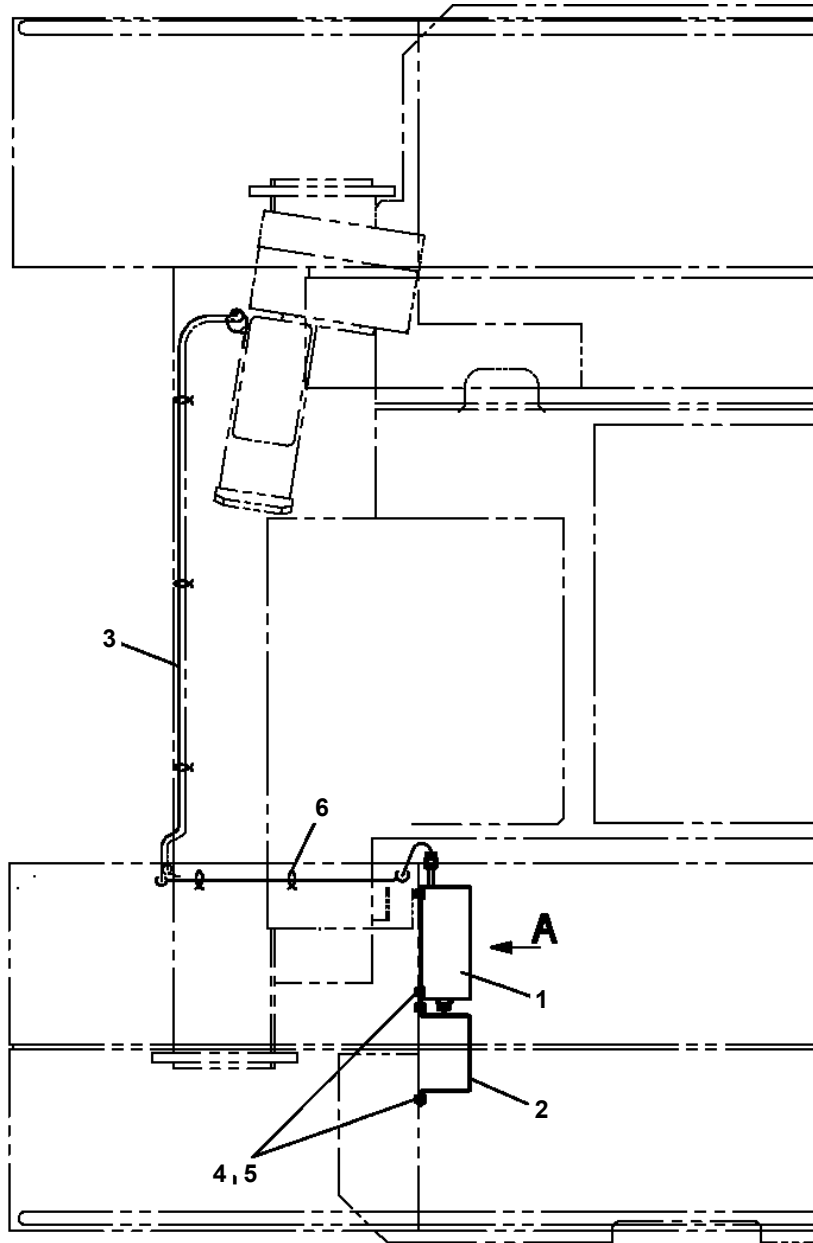


AT-141-1 4204310006 UPPER
PN1210023-01 TRANSMITTER, SIGNAL

ASSEMBLY DRAWING TRANSMITTER, SIGNAL

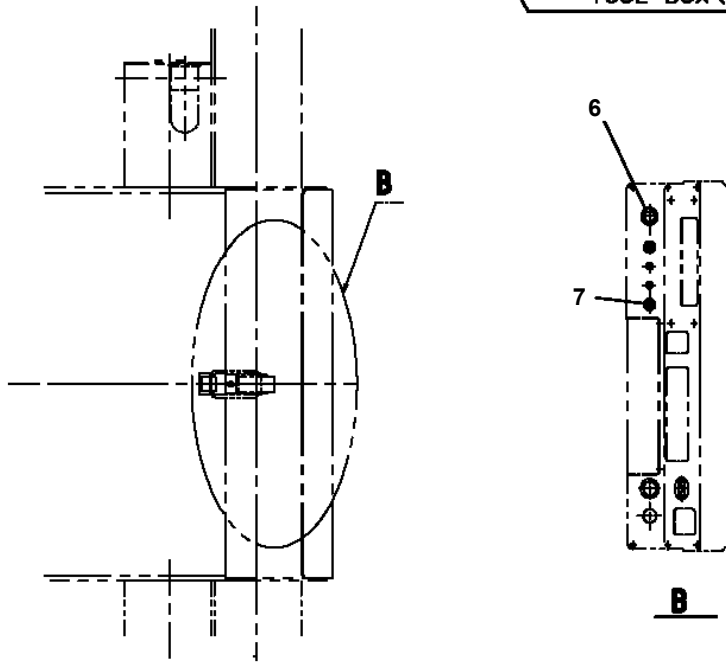
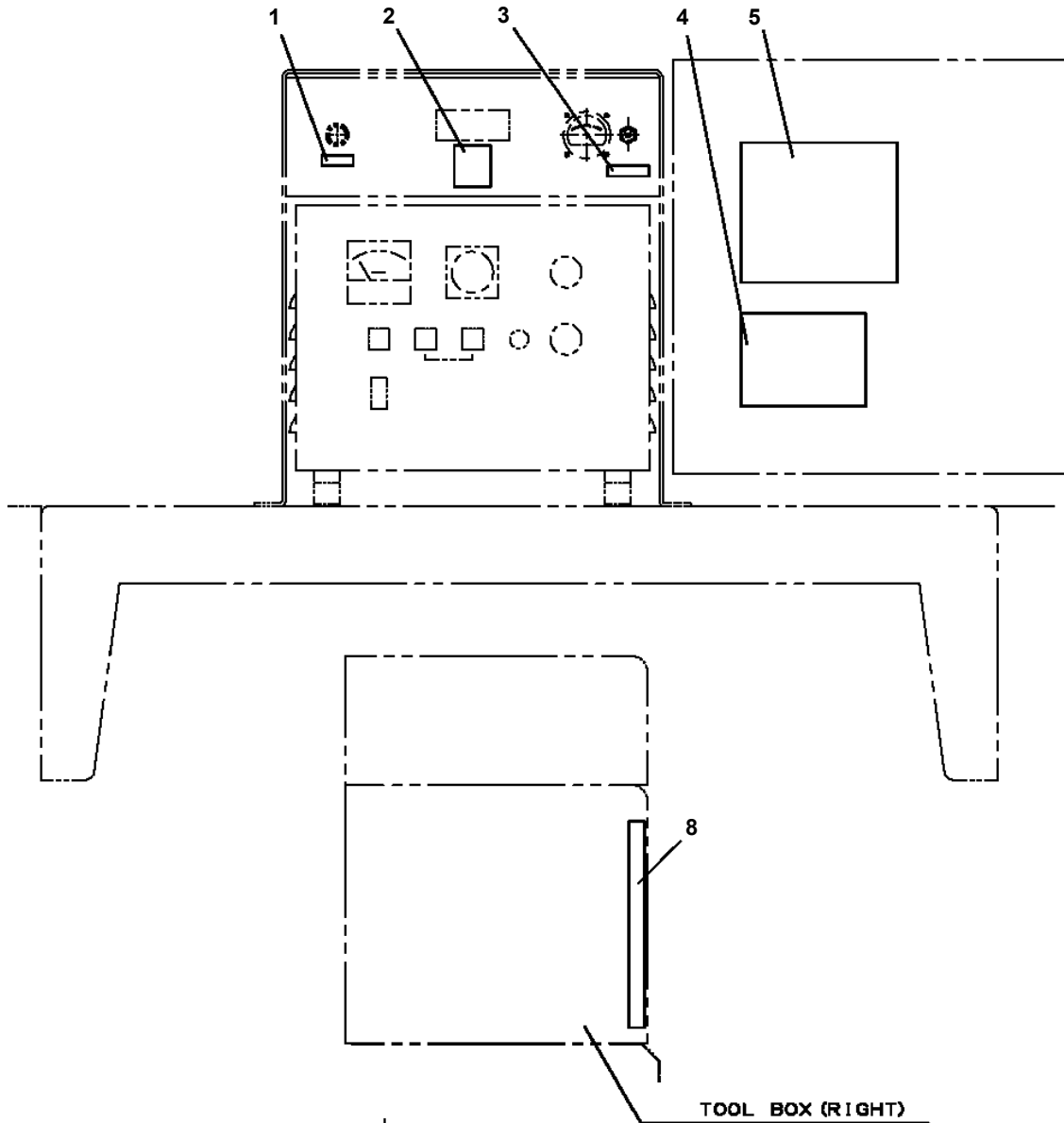


AT-141-1 42043100006 UPPER
PN1360025-01 MOUNT,CHARGER



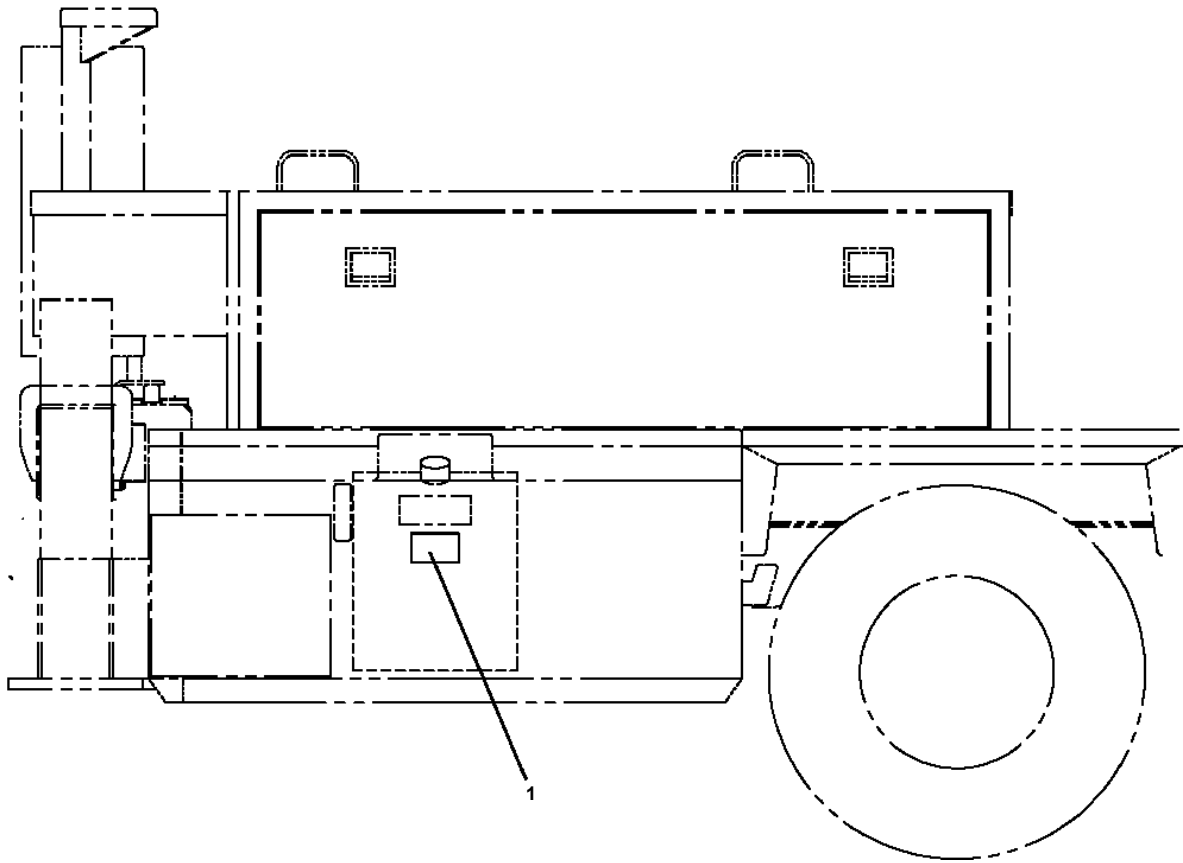
A

**AT-141-1 42043100006 UPPER
PO1010799-00 PLATE ASSY,NAME (CHARGER)**



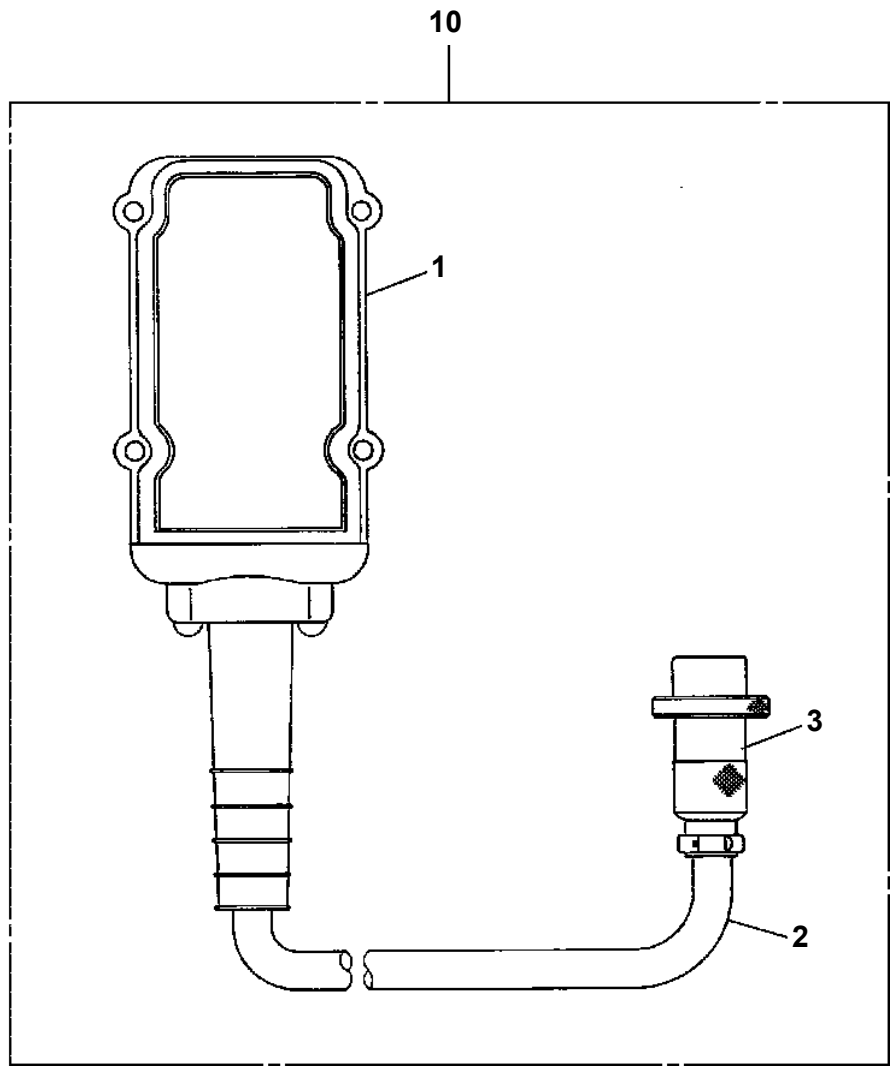
**AT-141-1 42043100006 UPPER
PO1014252-00 PLATE ASSY,NAME (HYDRAULIC OIL)**

FRONT ←

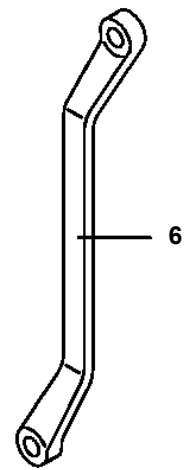
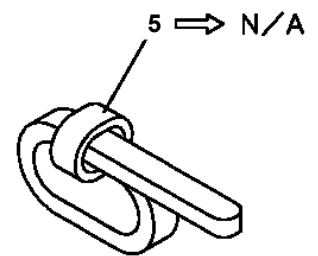
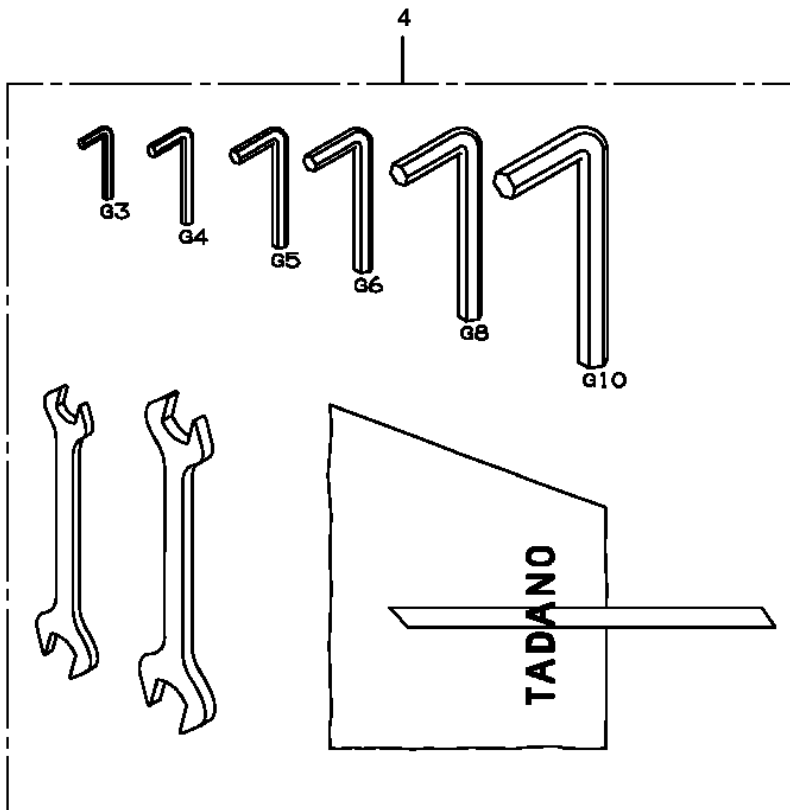
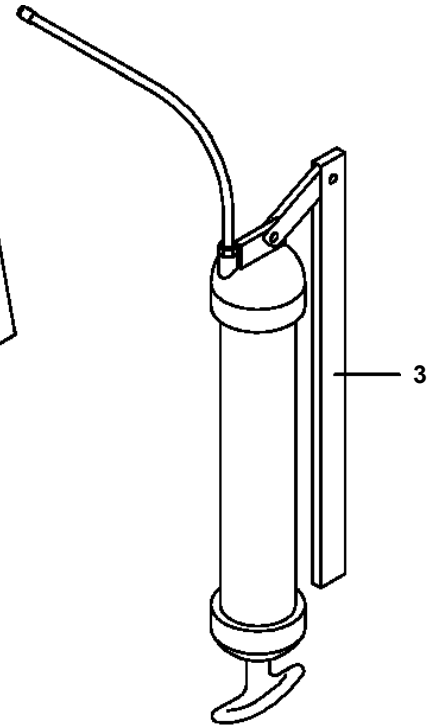
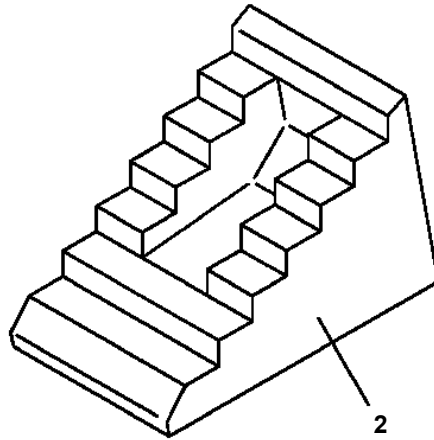
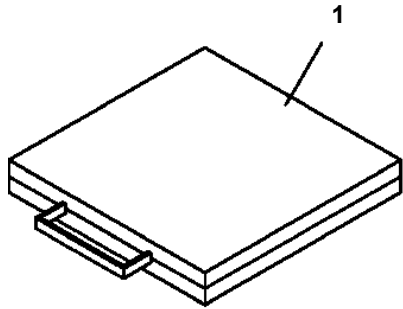


AT-141-1 42043100006 UPPER

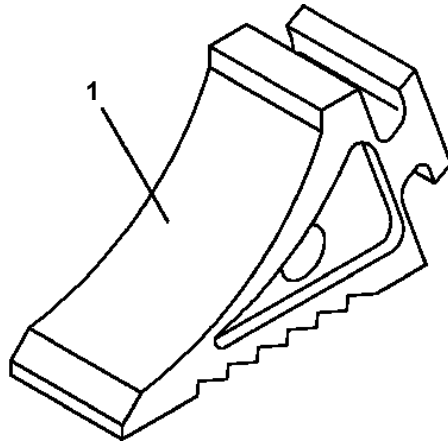
PV1030109-00 SWITCH BOX (ELECTRIC BOOSTER, 3M,NANABOSI,SINKOU DENKI)



**AT-141-1 42043100006 UPPER
PW1010091-04 ACCESSORIES**

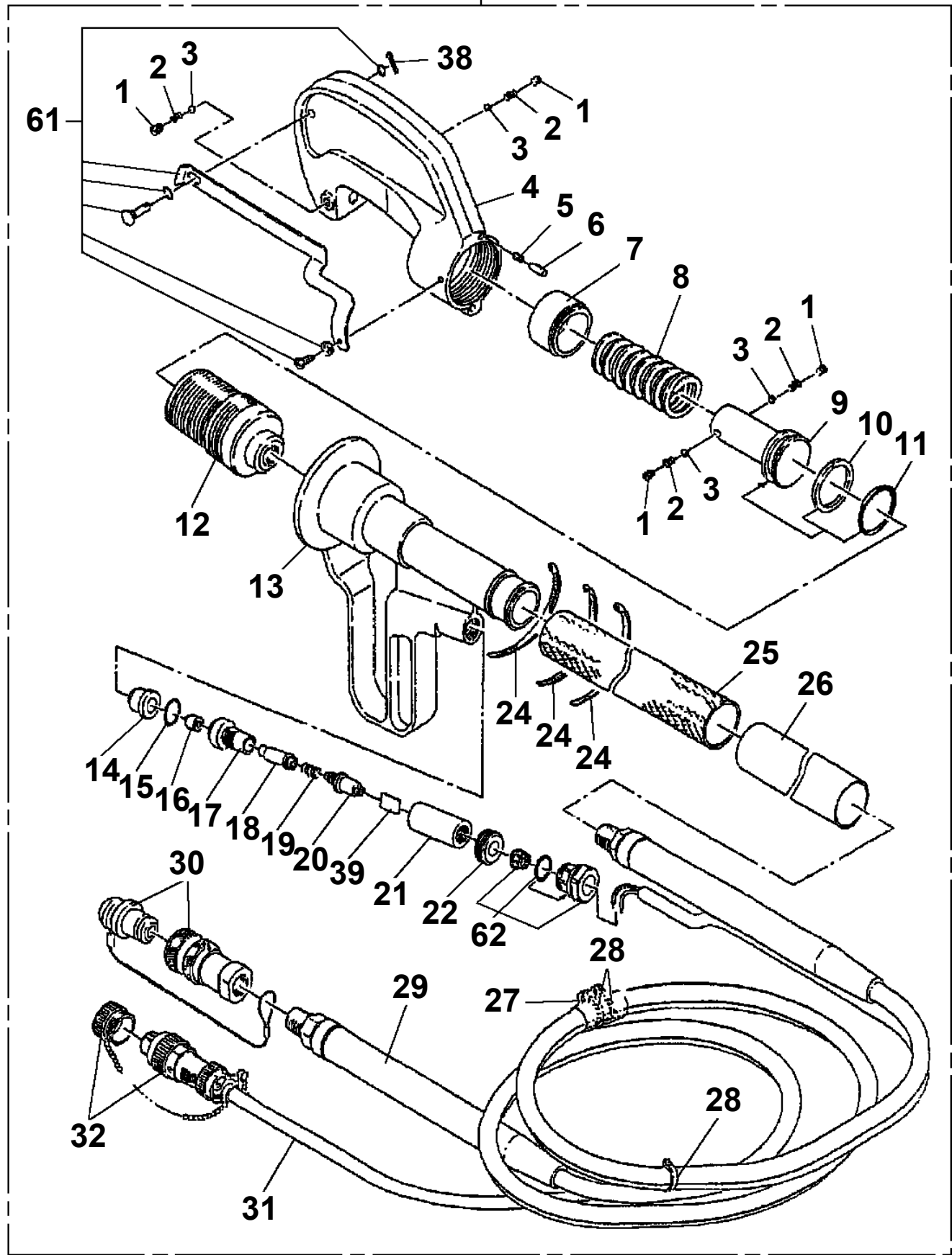


**AT-141-1 42043100006 UPPER
PW1050018-01 WEDGE (STOPPER FOR TIRE/JUSTIN)**

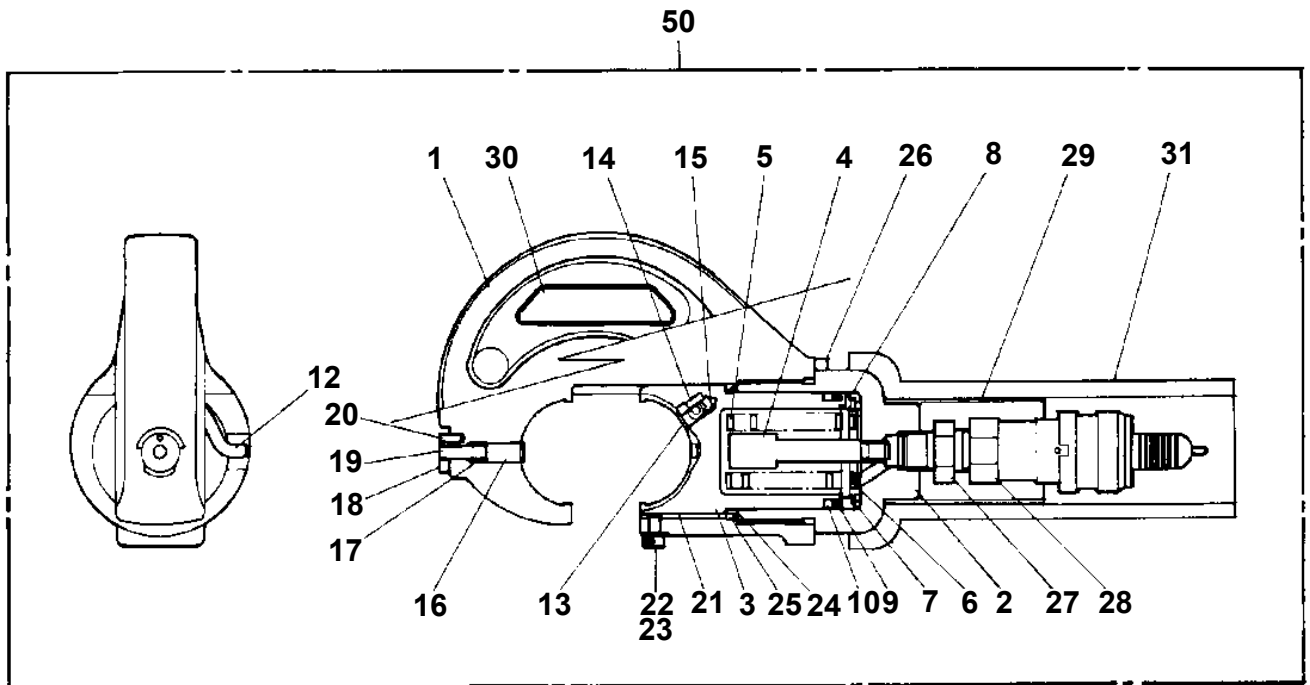


AT-141-1 42043100006 UPPER
PY1050001-01 CLAMP HEAD (IZUMI 8TON,2.5M)

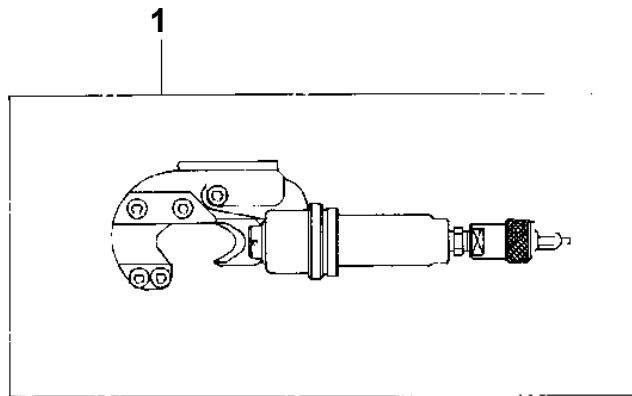
100



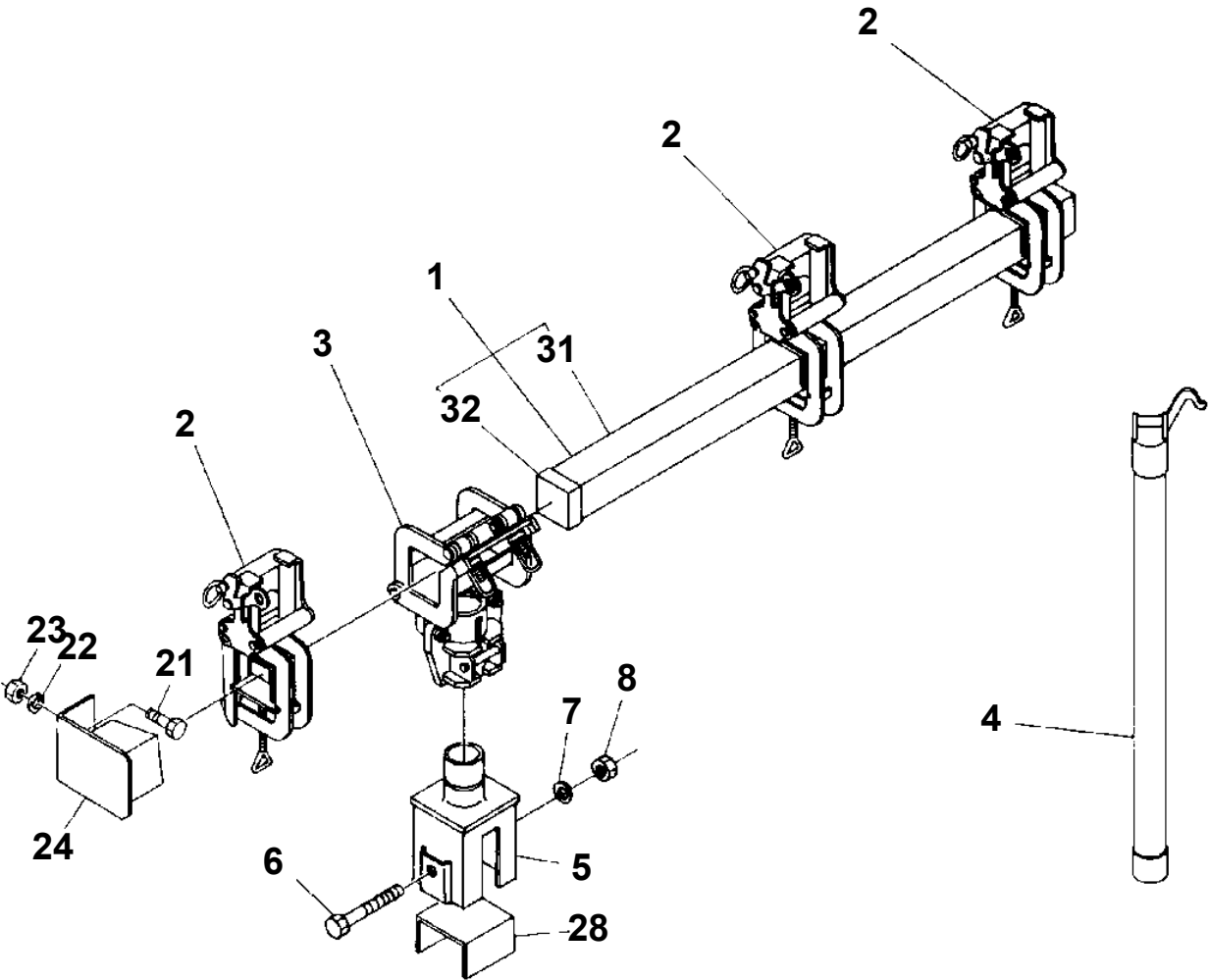
AT-141-1 42043100006 UPPER
PY1050007-00 CLAMP HEAD (SANWA,12TON)



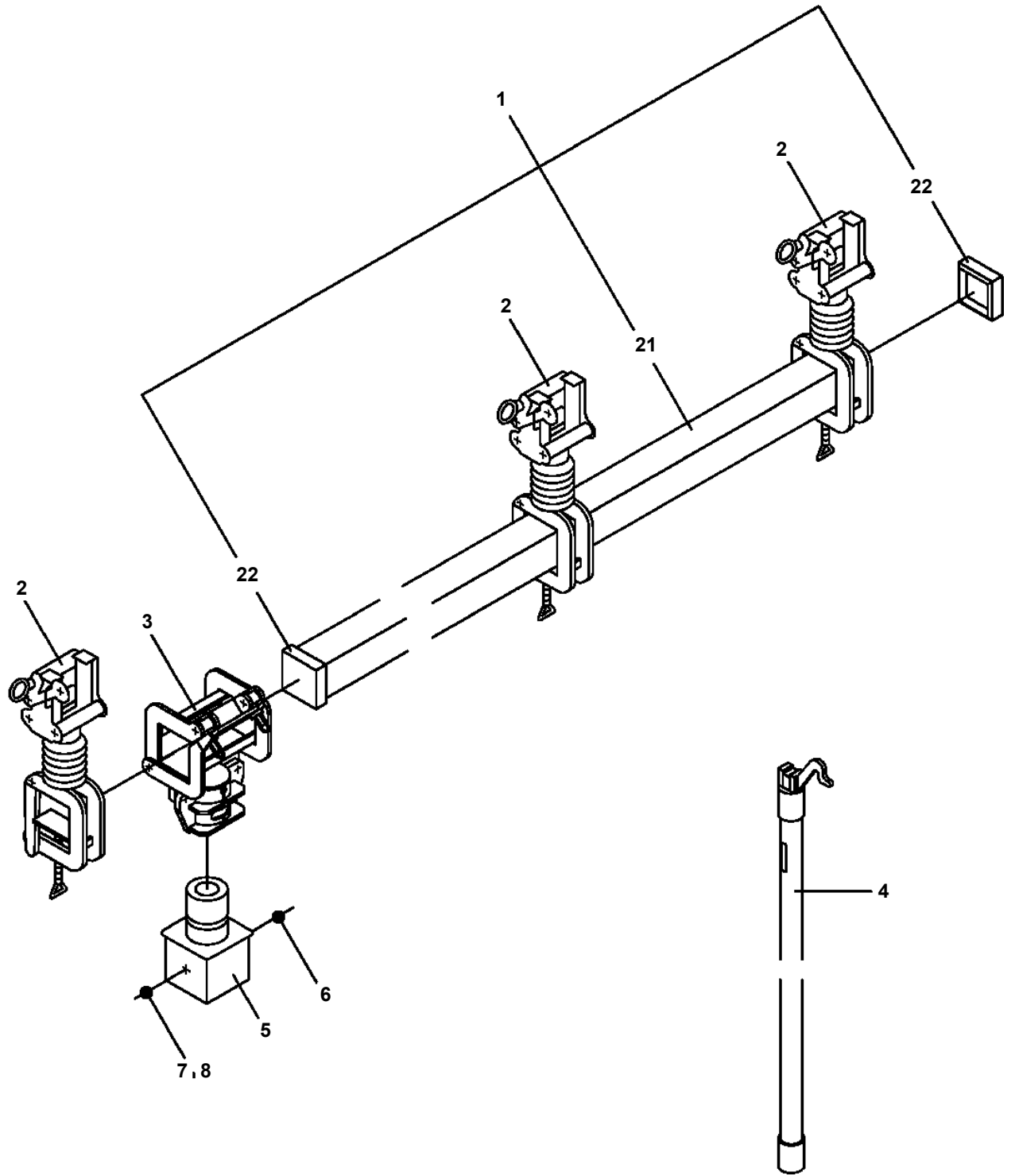
**AT-141-1 42043100006 UPPER
PY1060002-00 CUTTER HEAD (SANWA 6.5TON)**



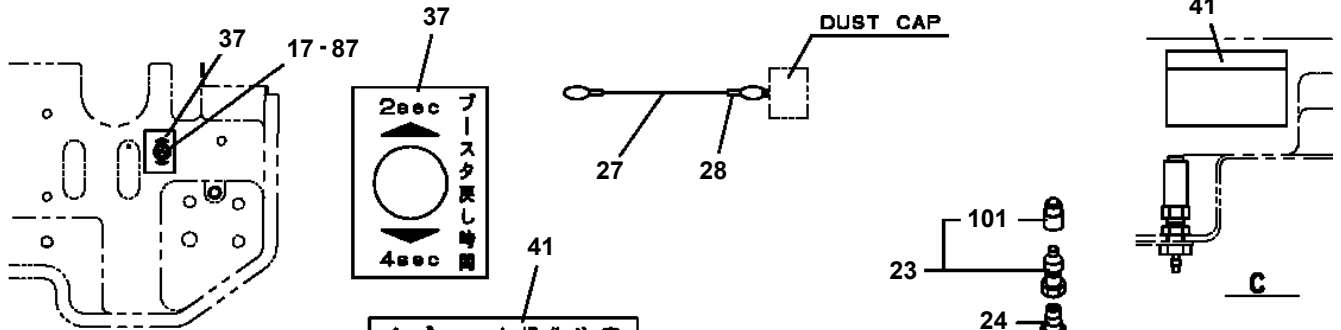
**AT-141-1 42043100006 UPPER
PY1080003-02 ARM**



**AT-141-1 42043100006 UPPER
PY1080017-01 ARM (MECHANICAL ARM JIB)**



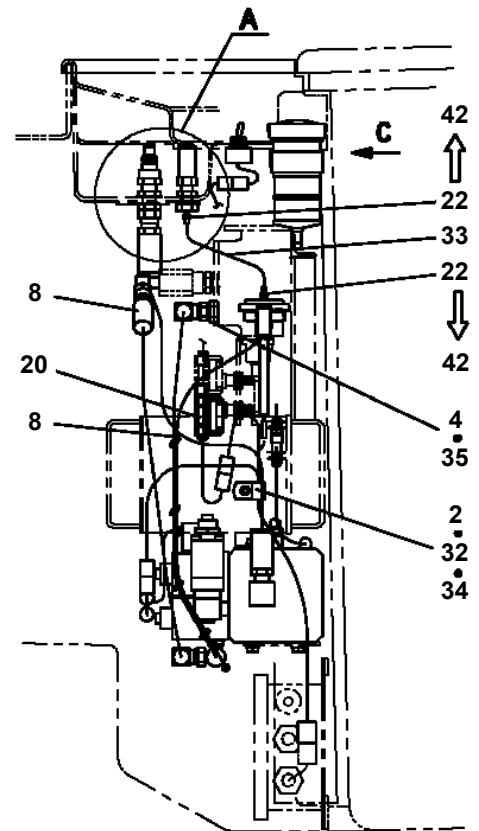
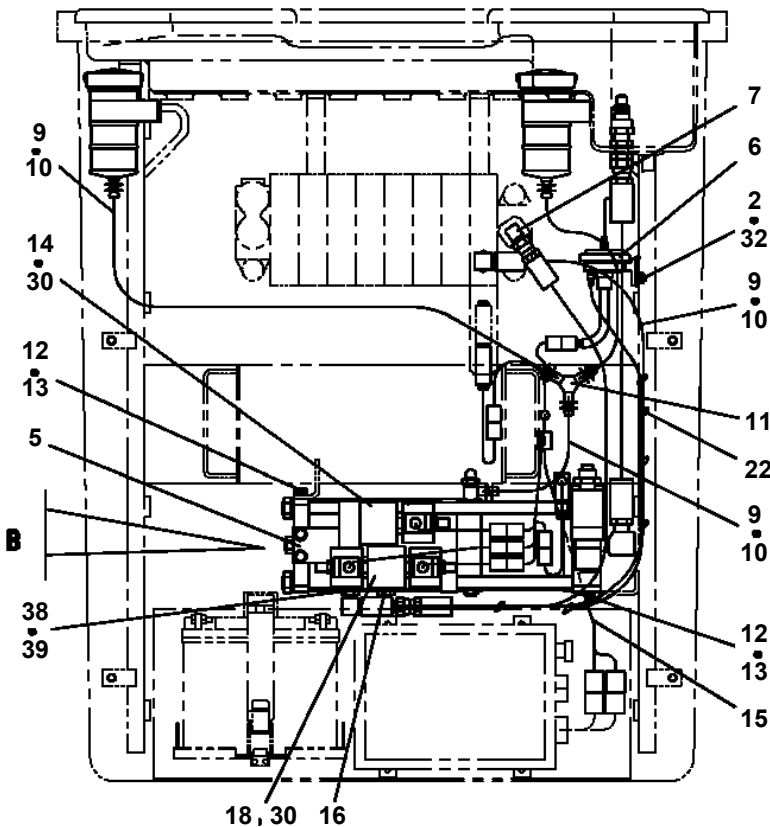
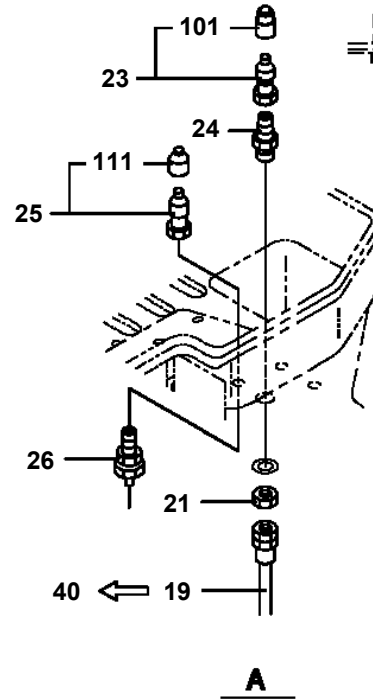
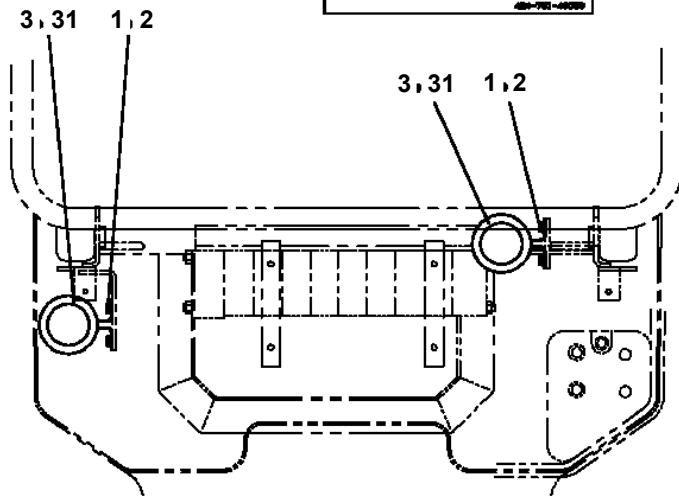
**AT-141-1 42043100006 UPPER
PY1160052-03 BOOSTER (AIR,WITHOUT BUKET LIFT)**



△プースタ操作注意

- 圧縮機及びカッタの作動部分には油を
入れないで下さい。
- 圧縮機のダイヤまたはカッタの交換は、
必ずアタッチメントレバー（スイッチ）
を中立位置にして行って下さい。

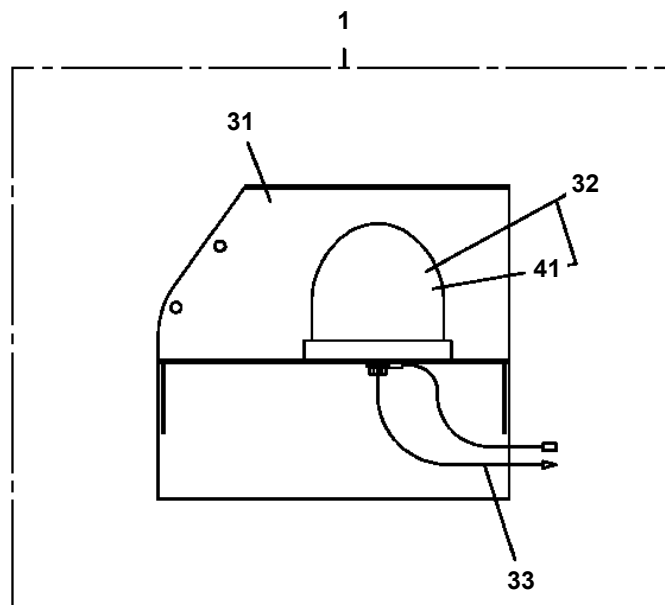
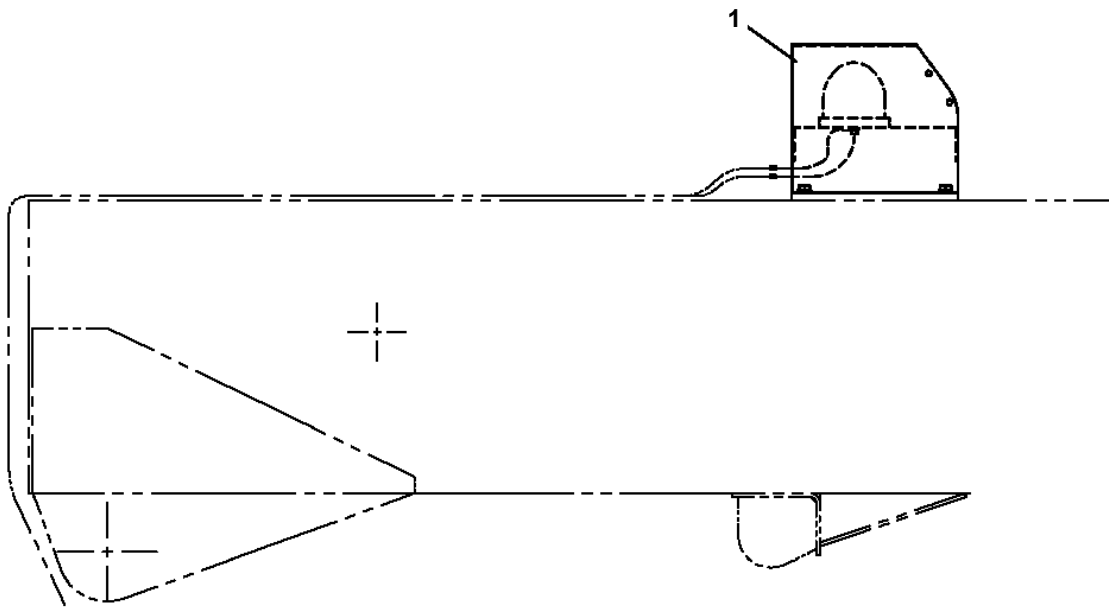
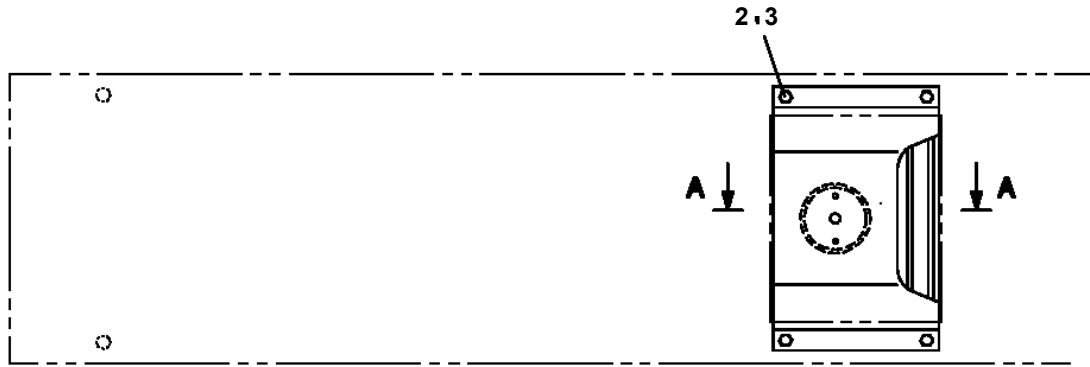
42-702-0000



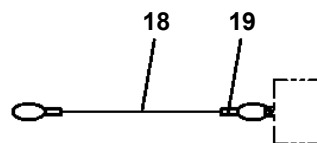
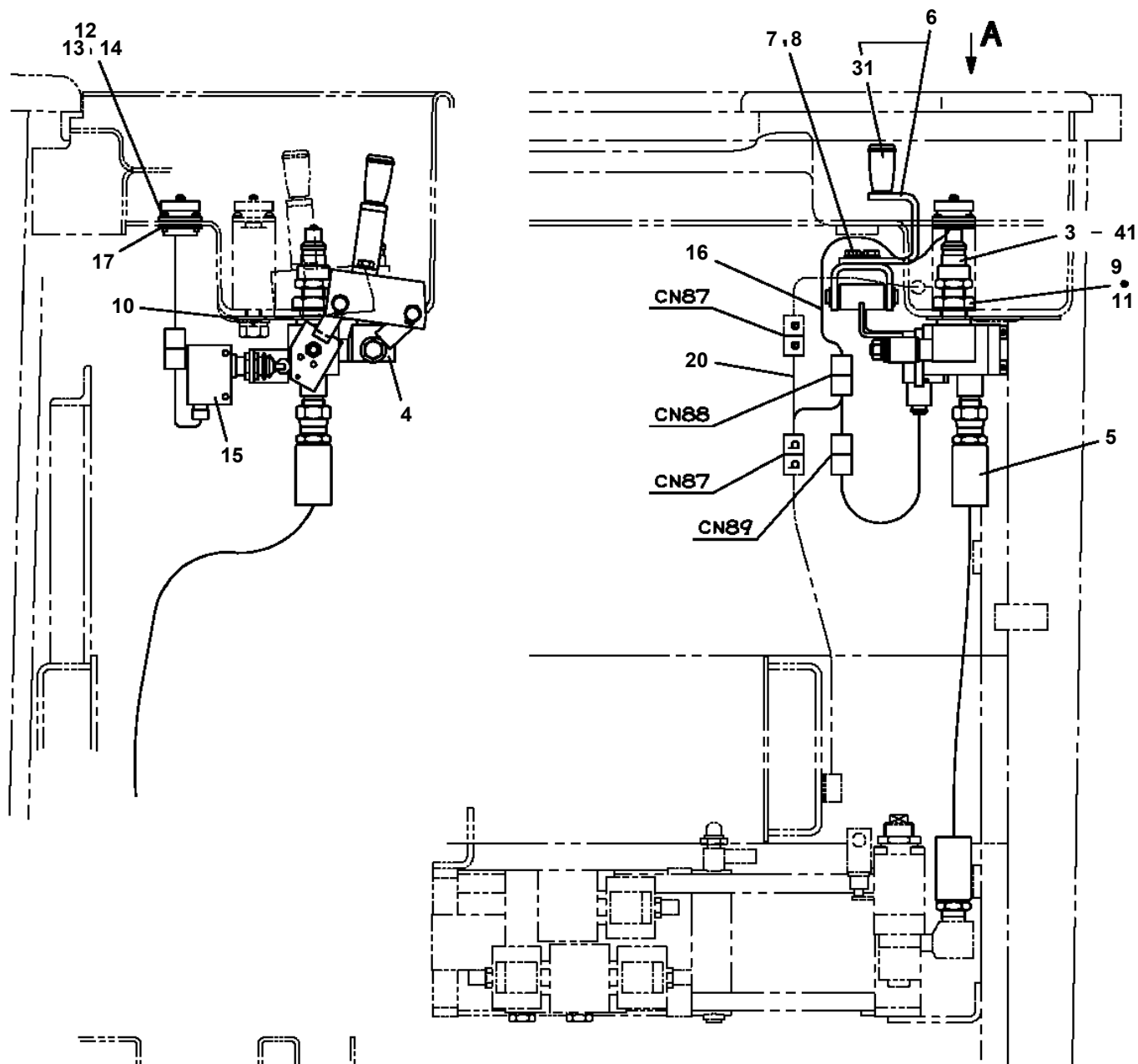
AT-141-1 4204310006 UPPER

Pos No.	Parts No	Parts Name	Qty	Unit	Technical Data	Serial No (Start)	Serial No (End)	Remarks
1	90131508025	BOLT,HEXAGON SOCKET	4		M8X25			
2	36050842000	JOINT ASSY (SUB PLATE)	1					
3	36051151000	BOOSTER ASSY (40T)	1					
11	36050395012	COVER (A)	1				226013	
12	91002806700	O-RING	1		1B P67		226013	
13	91411006700	RING,BACKUP	1		P67		226013	
14	36050345020	HEAD	1					
15	12235104020	SPRING	1					
16	80560061000	BALL,STEEL	1		3/8			
17	36050345030	PACKING SET	1					
19	36050395031	TUBE	1					
20	91001209500	O-RING	2		1A G95			
21	36050395042	COVER (B)	1					
22	91411004000	RING,BACKUP	1		P40		226013	
23	91001104000	O-RING	1		1A P40		226013	
24	36050395051	ROD	1					
25	36050395061	TUBE	1					
26	36050395071	ROD,PUSH	1					
27	91002802600	O-RING	1		1B P26			
28	36050345090	PISTON	1					
29	91411009000	RING,BACKUP	2		P90			
30	91001109000	O-RING	1		1A P90			
31	36050125110	NUT	1					
32	36050845011	COVER (SIDE)	1					
33	91002801200	O-RING	1		1B P12			
34	80602110170	RING,RITAINING	1		R17			
35	91002801000	O-RING	2		1B P10			
36	90201201000	NUT	1		M10			
37	36050125130	BUSH	1					
38	91001100800	O-RING	1		1A P8			
39	91411000800	RING,BACKUP	1					
40	36050395100	BOLT,STUD	4		L=369		226013	
41	90201201400	NUT	4		M14			
42	36050801400	WASHER,PLAIN	4					
43	91002909500	O-RING	2		1B G95			
44	90131505015	BOLT,HEXAGON SOCKET	4		M5X15			
45	90740006060	SCREW,SET	1		M6X6			
48	59457138000	PLUG ASSY	1					
50	80316030040	PLUG	1		PT1/4			
51	36050135101	SWITCH ASSY	1				226013	
52	91002800800	O-RING	1		1B P8			
61	36050135131	SWITCH,LIMIT	1				226013	
71	36051155010	PACKING SET	1					

AT-141-1 42043100006 UPPER
PY1180158-00 LAMP (AML)



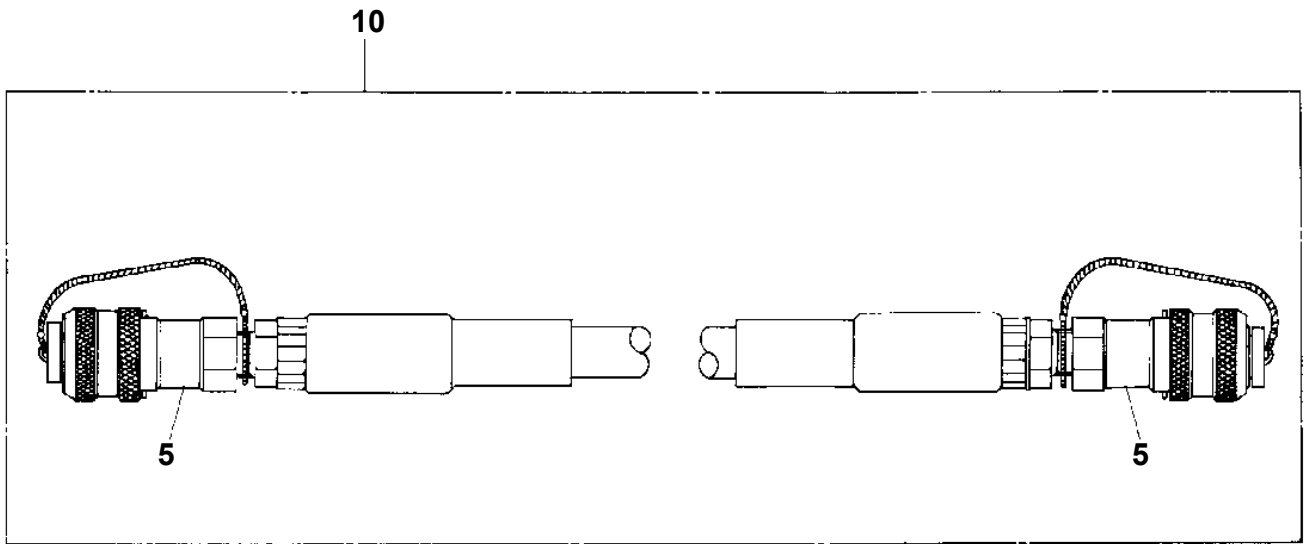
**AT-141-1 42043100006 UPPER
PY1500016-02 SELECTOR,BOOSTER (ELECTRIC)**



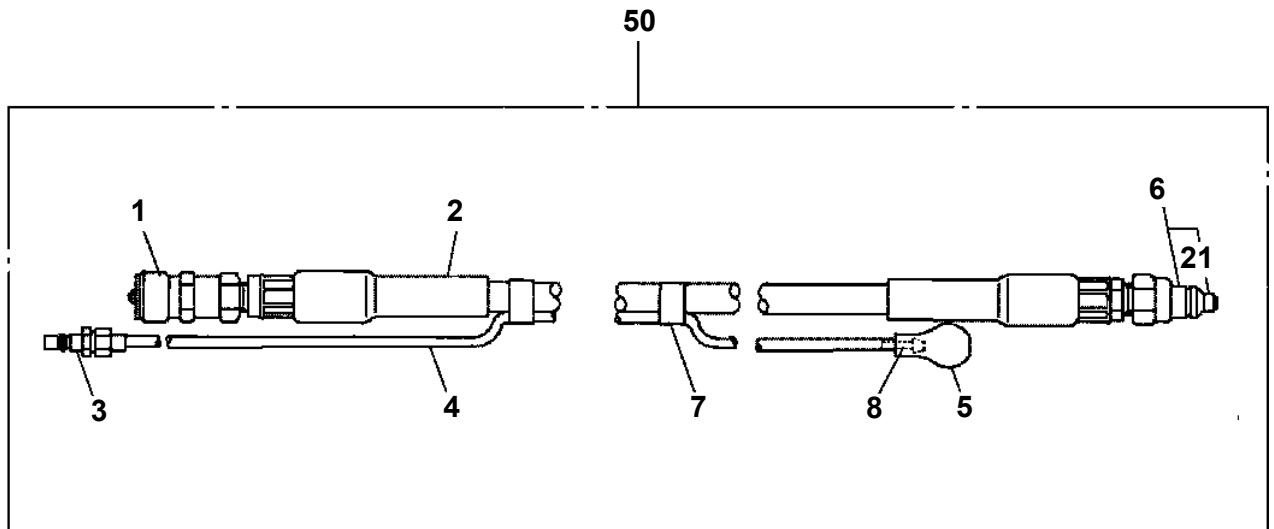
3 材のダストキャップの金属鎖を 18, 19 材と交換し、
21 材にてジョイントに固定する。

A

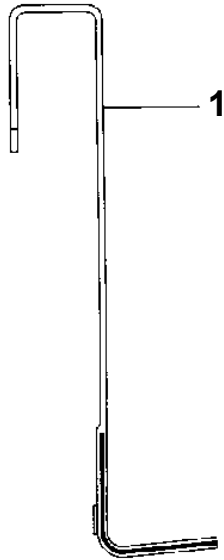
**AT-141-1 42043100006 UPPER
PY1590001-01 HOSE,BOOSTER (FEMALE-FEMALE,3M)**



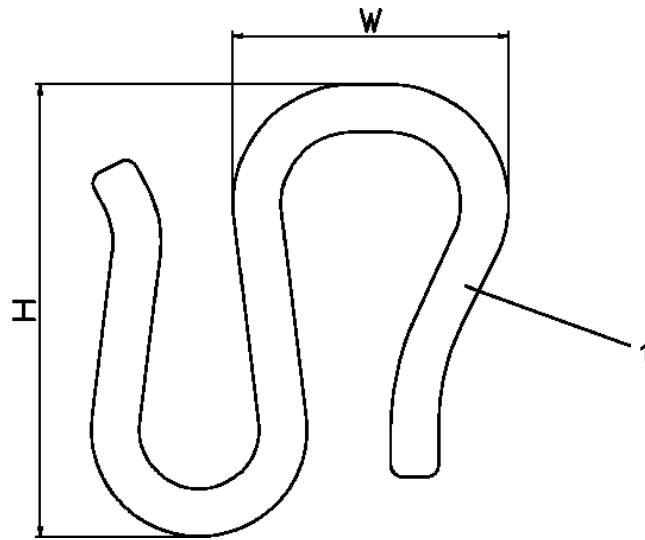
**AT-141-1 42043100006 UPPER
PY1590010-00 HOSE,BOOSTER (WITH AIR BALLOON,2M)**



**AT-141-1 42043100006 UPPER
PY1760001-00 STEP, BUCKET**



**AT-141-1 42043100006 UPPER
PY1790004-01 HANGER (FOR BUCKET,FRP)**



CLICK HERE TO **DOWNLOAD** THE COMPLETE MANUAL

- Thank you very much for reading the preview of the manual.
- You can download the complete manual from: www.heydownloads.com by clicking the link below



- Please note: If there is no response to CLICKING the link, please download this PDF first and then click on it.

CLICK HERE TO **DOWNLOAD** THE COMPLETE MANUAL