

AT-141-1 42043100015 UPPER

PD2000102-00 SWING UNIT

PG2000115-01 BOOM UNIT

PH1000545-00 SAFETY DEVICES (MOMENT LIMITER)

PJ3000362-00 BUCKET SYSTEM

PK2000429-00 FRAME UNIT

PO1000149-00 INDICATION PLATES

PY1001550-00 OPTIONS,1

PY1001553-00 OPTIONS,2

ASSEMBLY

CLICK HERE TO **DOWNLOAD** THE COMPLETE MANUAL

- Thank you very much for reading the preview of the manual.
- You can download the complete manual from: www.heydownloads.com by clicking the link below



- Please note: If there is no response to CLICKING the link, please download this PDF first and then click on it.

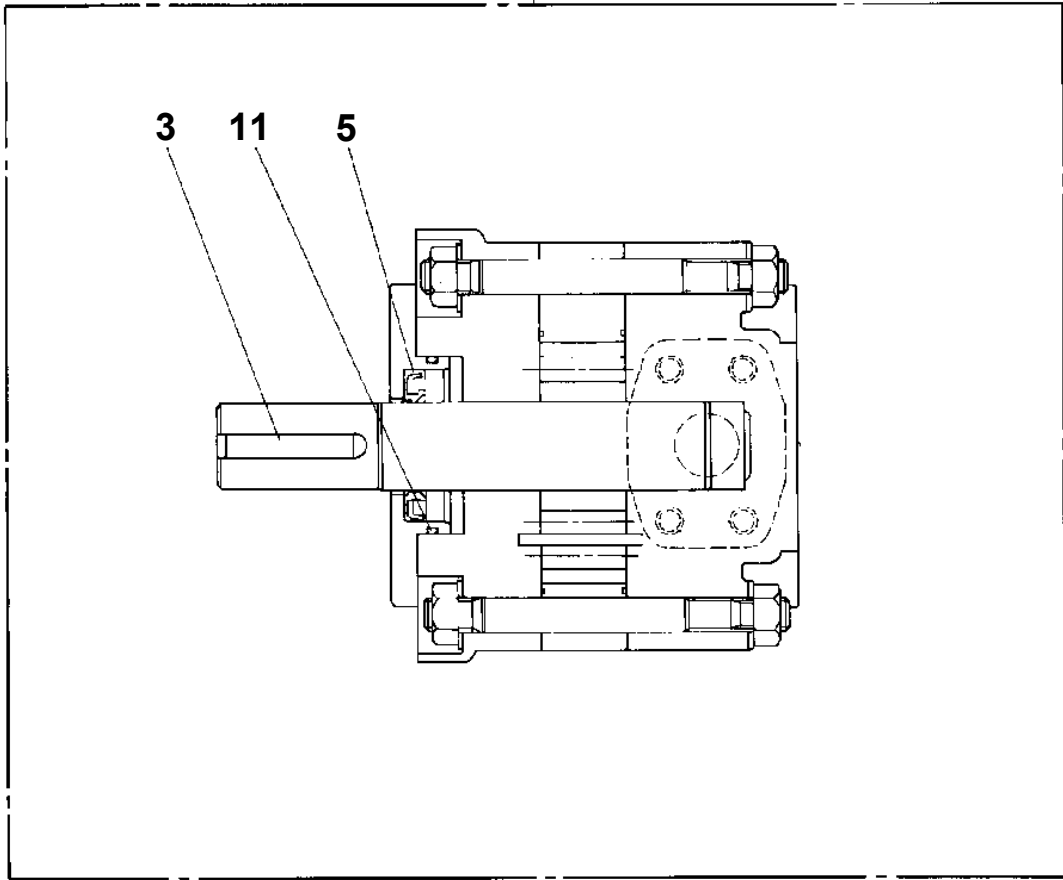
CLICK HERE TO **DOWNLOAD** THE COMPLETE MANUAL

AT-141-1 42043100015 UPPER

Pos No.	Parts No	Parts Name	Qty	Unit	Technical Data	Serial No (Start)	Serial No (End)	Rema
1	(*****)	FRAME (WITH ENGINE UNIT)	1					
2	(*****)	OUTRIGGER (FRONT)	1				225268	
	(*****)	OUTRIGGER (FRONT)	1			225269		
3	(*****)	OUTRIGGER (REAR)	1					
4	(*****)	PIPING,LOWER (FRAME)	1					
5	(*****)	OPE.ASSY,OUTRIGGER	1					
6	(*****)	ELEC.ASSY (SUB FRAME)	1					
7	(*****)	TANK SUPPORT INSTALLATION	1					
9	(*****)	ELEC.ASSY (POWER SELECT)	1					
31	(*****)	POWER SUPPLY (MOTOR UNIT)	1				225444	
	(*****)	POWER SUPPLY (MOTOR UNIT)	1			225445		
32	(*****)	POWER SUPPLY (BATTERY)	1				225715	
	(*****)	POWER SUPPLY (BATTERY)	1			225716		
33	(*****)	POWER SUPPLY (CHARGER)	1				225209	
	(*****)	POWER SUPPLY (CHARGER)	1			225210	225511	
	(*****)	POWER SUPPLY (CHARGER)	1			225512		
34	(*****)	POWER SUPPLY (WIRING)	1				225444	
	(*****)	POWER SUPPLY (WIRING)	1			225445		

**AT-141-1 42043100015 UPPER
PB1100075-00 PUMP, HYDRAULIC (MOTOR UNIT)**

50



AT-141-1 42043100015 UPPER

Pos No.	Parts No	Parts Name	Qty	Unit	Technical Data	Serial No (Start)	Serial No (End)
1	42630290000	JOINT,ROTARY	1				225453
	42630290001	JOINT,ROTARY	1			225454	225760
	42630290002	JOINT,ROTARY	1			225761	
2	90101210028	BOLT	4		M10X28		
3	90302041001	WASHER,SPRING	4		10		
4	42440300020	SUPPORT	1				
7	33210000650	WIRE	1				
8	37000112670	BAR	1				
9	37001506710	BOLT	2		M12X60		
11	90101208022	BOLT	8		M8X22		
12	90302040801	WASHER,SPRING	8		8		
13	42630010010	COVER	1				
14	80516006910	BEARING,BALL	2				
15	42630010020	GUARD	1				
16	80561100110	NUT	1		AN11		
17	80562100110	WASHER,TOOTH	1		AW11		
18	42630290100	CASE	1				225201
	42630290101	CASE	1			225202	
19	42630010040	CORE	1				
21	37000508880	PLATE	1				
22	80603110550	RING,RITAINING	1		55		
23	80913137290	KEY	1				
24	53154004000	BUSH (THRUST)	1				
25	42630290200	BODY	1				
26	42630290300	CORE	1				
27	80316030060	PLUG	3		PT3/8		225202
	80316030060	PLUG	2		PT3/8	225203	
29	42630290010	COVER	1				
30	42630190020	SUPPORT	1				
31	90101206012	BOLT	4		M6X12		
32	90302040601	WASHER,SPRING	4		6		
33	90303070601	WASHER,PLAIN	4		6		
34	80913137160	KEY	1				
35	42630290020	SHAFT	1				225760
	42630290021	SHAFT	1			225761	
36	33630000290	INSULATOR	15				
37	80720105016	PIN,SPRING	1		5X16		
38	91100211000	SEAL,RING	2				
39	91531211000	PACKING	2				
40	80316030040	PLUG	1		PT1/4		
42	42630211100	CAP	17				225201
	42630211100	CAP	21			225202	
43	82456101000	NIPPLE,GREASE	1		A-PT1/8		
44	80316030080	PLUG	1		PT1/2		225202
	80316030080	PLUG	2		PT1/2	225203	
51	37004500010	RING,SLIP (WITH CABLE.,B)	1				
52	37004500020	RING,SLIP (WITH CABLE.,W)	1				
53	37004500030	RING,SLIP (WITH CABLE.,R)	1				
54	37004500040	RING,SLIP (WITH CABLE.,G)	1				
55	37004500050	RING,SLIP (WITH CABLE.Y)	1				
56	37004500060	RING,SLIP (WITH CABLE,B/R)	1				
57	37004500080	RING,SLIP (WITH CABLE.GY)	1				
58	37004500140	RING,SLIP (WITH CABLE.BR/R)	1				
59	37004500070	RING,SLIP (WITH CABLE.,L)	1				
60	37004500090	RING,SLIP (WITH CABLE,B/R)	1				
61	37004500100	RING,SLIP (WITH CABLE.,W/R)	1				
62	37004500110	RING,SLIP (WITH CABLE,R/G)	1				
63	37004500120	RING,SLIP (WITH CABLE.,G/R)	1				
64	37004500130	RING,SLIP (WITH CABLE.Y/R)	1				
65	82100002289	CONNECTOR	1				225201
	82100002289	CONNECTOR	1				225453
	82100002289	CONNECTOR	2			225202	225453
66	82100002332	PLUG	2				225453

AT-141-1 42043100015 UPPER

Pos No.	Parts No	Parts Name	Qty	Unit	Technical Data	Serial No (Start)	Serial No (End)
2	36634515010	PLUG ASSY	1				
4	36634365020	VALVE,CONTROL (BUCKET LIFT)	1				
5	36634365030	VALVE,CONTROL (BUCKET SWING)	1				
6	36634365040	VALVE,CONTROL (ELEVATING)	1				
7	36634365050	VALVE,CONTROL (SWING)	1				
8	36634365060	VALVE,CONTROL (TELESCOPING)	1				
9	36634365070	VALVE,CONTROL (WINCH)	1				
10	36634365080	VALVE,CONTROL (ATTACHMENT)	1				
11	36634365090	VALVE,RELIEF	1				
24	91002905500	O-RING	8		1B G55		
32	91000501500	O-RING	1		AS568-015		
33	91002802200	O-RING	1		1B P22		
43	56051331100	SEAL,OIL	14				
52	36630045150	COVER	3				
55	91002801400	O-RING	7		1B P14		
64	91001100300	O-RING	2		1A P3		
75	91001101001	O-RING	1		1A P10A		
76	36634365100	RING,BACKUP	1				
77	19215101010	O-RING	2				
83	91001001600	O-RING	2		1A S16		
85	36634365110	RING,BACKUP	1				
86	91001100600	O-RING	1		1A P6		
100	36634360001	VALVE,MANUAL CONTROL (BUCKET)	1				

AT-141-1 42043100015 UPPER

Pos No.	Parts No	Parts Name	Qty	Unit	Technical Data	Serial No (Start)	Serial No (End)	Remarks
2	36634515010	PLUG ASSY	1					
4	36634105050	VALVE,CONTROL	1					
5	36634105060	VALVE,CONTROL	1					
6	36634105070	VALVE,CONTROL	1					
24	91002905500	O-RING	4		1B G55			
32	91000501500	O-RING	1		AS568-015			
33	91002802200	O-RING	1		1B P22			
43	36631975010	O-RING	6					
44	36634365190	WIPER,DUST	6					
45	36634365200	RETAINER (SEAL)	6					
48	36630215030	COVER (SPRING)	3					
49	36630045140	SPRING	3					
52	36635175070	BRACKET	3					
53	36630045150	COVER	2					
56	36635555080	SPRING	2					
57	91002801400	O-RING	3		1B P14			
73	12435101180	RETAINER (SEAL)	1					
76	36634105080	SPRING	1					
88	91001100300	O-RING	2		1A P3			
100	36634100002	VALVE,MANUAL CONTROL	1					

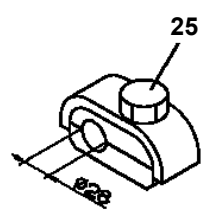
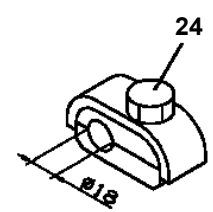
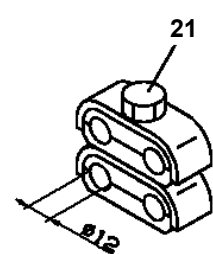
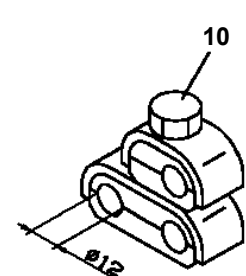
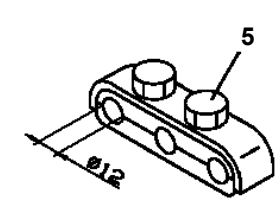
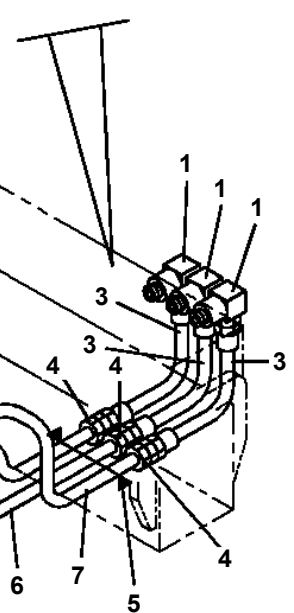
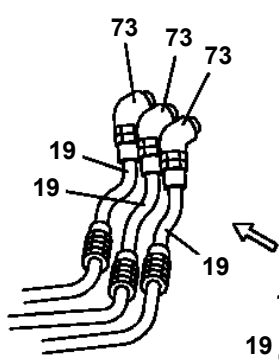
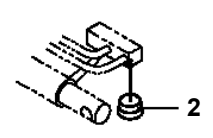
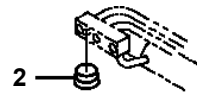
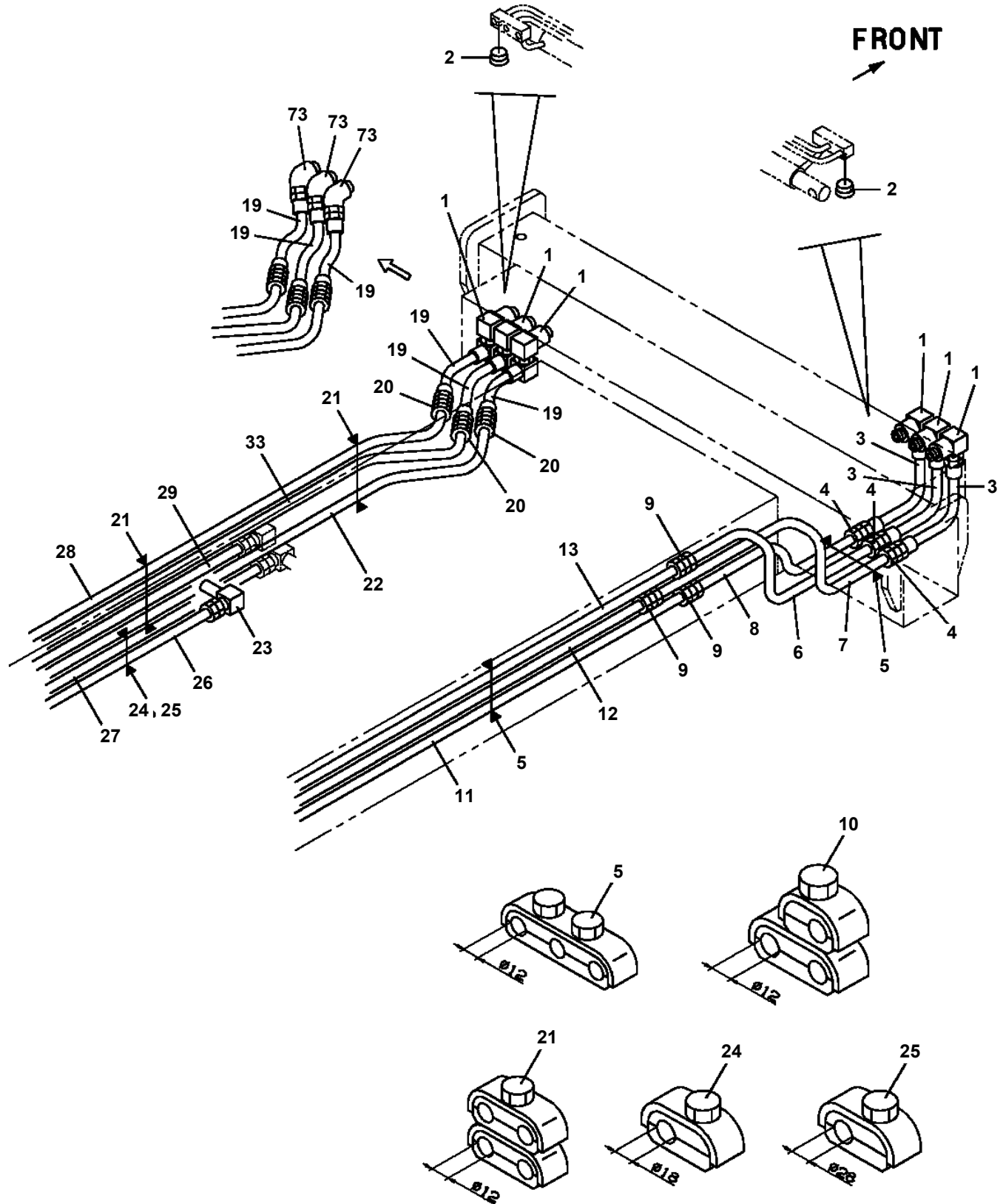
AT-141-1 42043100015 UPPER

Pos No.	Parts No	Parts Name	Qty	Unit	Technical Data	Serial No (Start)	Serial No (End)	Re
1	36160630000	REEL,CORD	1				225265	
	36160690000	REEL,CORD	1			225266	225444	
2	90101210025	BOLT	4		M10X25			
3	90201201000	NUT	4		M10			
4	90302041001	WASHER,SPRING	8		10			
5	42420084400	SUPPORT	1				225322	
	42420084800	SUPPORT	1			225323	225444	
6	90101208016	BOLT	7		M8X16		225322	
	90101208016	BOLT	15		M8X16	225323		
7	90302040801	WASHER,SPRING	31		8			
8	90201200800	NUT	5		M8		225444	
	90201200800	NUT	4		M8	225445		
9	90101210016	BOLT	4		M10X16			
10	82400000393	INSULATOR	1					
11	80172303014	SCREW,MACHINE	1		M3X14			
12	90303070301	WASHER,PLAIN	1		3			
13	90101208012	BOLT	22		M8X12		225322	
	90101208012	BOLT	14		M8X12	225323		
14	42420083100	CHARGER ASSY	1					
15	42420083300	BOX ASSY	1					
17	91810130240	FASTENER	10					
18	42420084300	CABLE	1					
19	42420084500	SPRING	1				225322	
20	80172304010	SCREW,MACHINE	4		M4X10		225322	
	80172304010	SCREW,MACHINE	2		M4X10	225323		
21	90201200400	NUT	2		M4		225322	
22	90302040401	WASHER,SPRING	4		4		225322	
	90302040401	WASHER,SPRING	2		4	225323		
23	90303070401	WASHER,PLAIN	2		4		225322	
24	82100002008	CLAMP	1		WR12			
25	90201200600	NUT	1		M6			
26	90302040601	WASHER,SPRING	5		6			
27	82100002669	BREAKER	1					
28	82100002040	CLAMP	1		WE15			
29	90101206012	BOLT	4		M6X12			
30	42420046100	CONVERTER (DC48V TO DC24V)	1				225454	
	42420046200	CONVERTER (FAMOTH)	1			225455		
31	42420084700	SUPPORT	1					
32	42420084601	COVER ASSY	1					
33	42420084310	CABLE	1					
34	42420084320	CABLE	1					
35	90303070801	WASHER,PLAIN	8		8	225323	225444	
	90303070801	WASHER,PLAIN	9		8	225445		
36	36160740000	REEL,CORD	1			225445		
37	42420084801	SUPPORT	1			225445		
41	42420083500	COVER	1					
42	42420083400	BOX	1					
43	42420083600	COVER	1					
44	90101206014	BOLT	6		M6X14			
45	90302040601	WASHER,SPRING	6		6			
46	82400000318	CATCH	1					
47	80172303008	SCREW,MACHINE	4		M3X8			
48	90201200300	NUT	12		M3			
49	90302040301	WASHER,SPRING	20		3			
50	80175303010	SCREW,MACHINE	12		M3X10			
51	82400000432	HINGE	2					
61	42420084010	SUPPORT	1					
62	42420084040	HARNESS	1				225454	
	42420084041	HARNESS	1			225455		
63	80172303010	SCREW,MACHINE	4		M3X10			
65	90303070301	WASHER,PLAIN	4		3			
67	42420084050	HARNESS	1					
68	42420084060	HARNESS	1					

AT-141-1 42043100015 UPPER

Pos No.	Parts No	Parts Name	Qty	Unit	Technical Data	Serial No (Start)	Serial No (End)
2	42420082201	SUPPORT	1				
3	90171112020	BOLT	2		M12X20		
4	42420082301	SUPPORT	1				
5	90303071201	WASHER,PLAIN	2		12		
6	90302041201	WASHER,SPRING	2		12		
7	42420082010	CABLE ASSY	1				
8	91810130240	FASTENER	10				
9	90303070801	WASHER,PLAIN	1		8		
10	90302040801	WASHER,SPRING	1		8		
11	90201200800	NUT	1		M8		
12	82100001802	TUBE,CORRUGATE	2	M	10		
41	42420082101	BATTERY ASSY	2		24V		
43	42421893000	BATTERY ASSY (WATER REFILLING)	2				
44	42738981000	TANK ASSY (BATTERY,WATER)	2				
53	42420087510	BATTERY	24		2V		
54	42420087540	SENSOR (BATTERY FLUIDLEVEL)	2				
55	42420087530	LAMP ASSY (RED+GREEN LAMP)	2				
56	42420397540	CAP (WITH FLOAT)	22				
61	42391684100	PLATE,NAME	2				226343
	42392655030	PLATE,CAUTION	2			226344	
62	42420082510	PLATE (NON-SLIP)	2				227072
	42420082550	PLATE (NON-SLIP)	2			227073	

**AT-141-1 42043100015 UPPER
PB1410272-05 PIPING,LOWER (FRAME)**

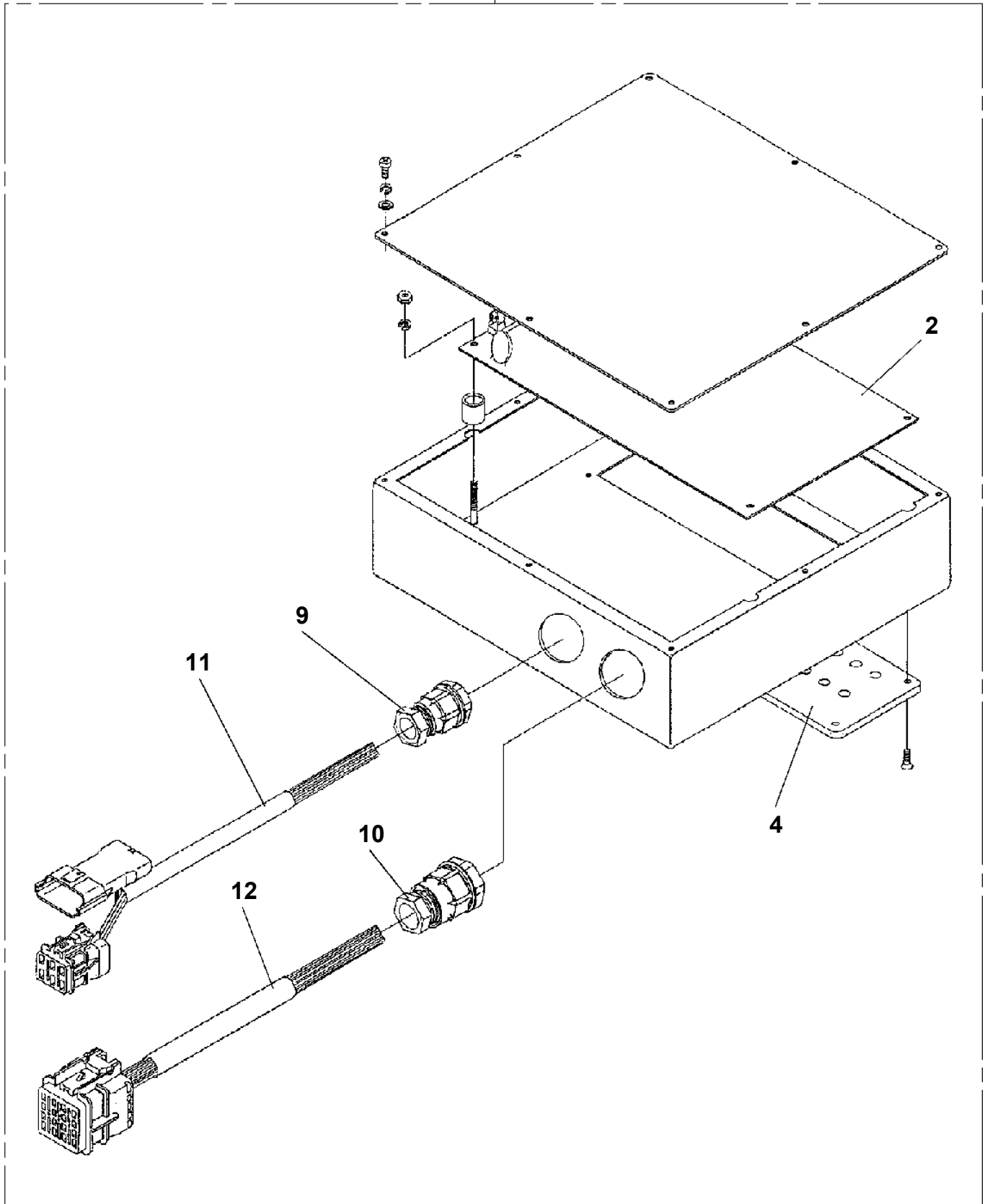


**AT-141-1 42043100015 UPPER
PC1011117-00 OUTRIGGER (FRONT)**

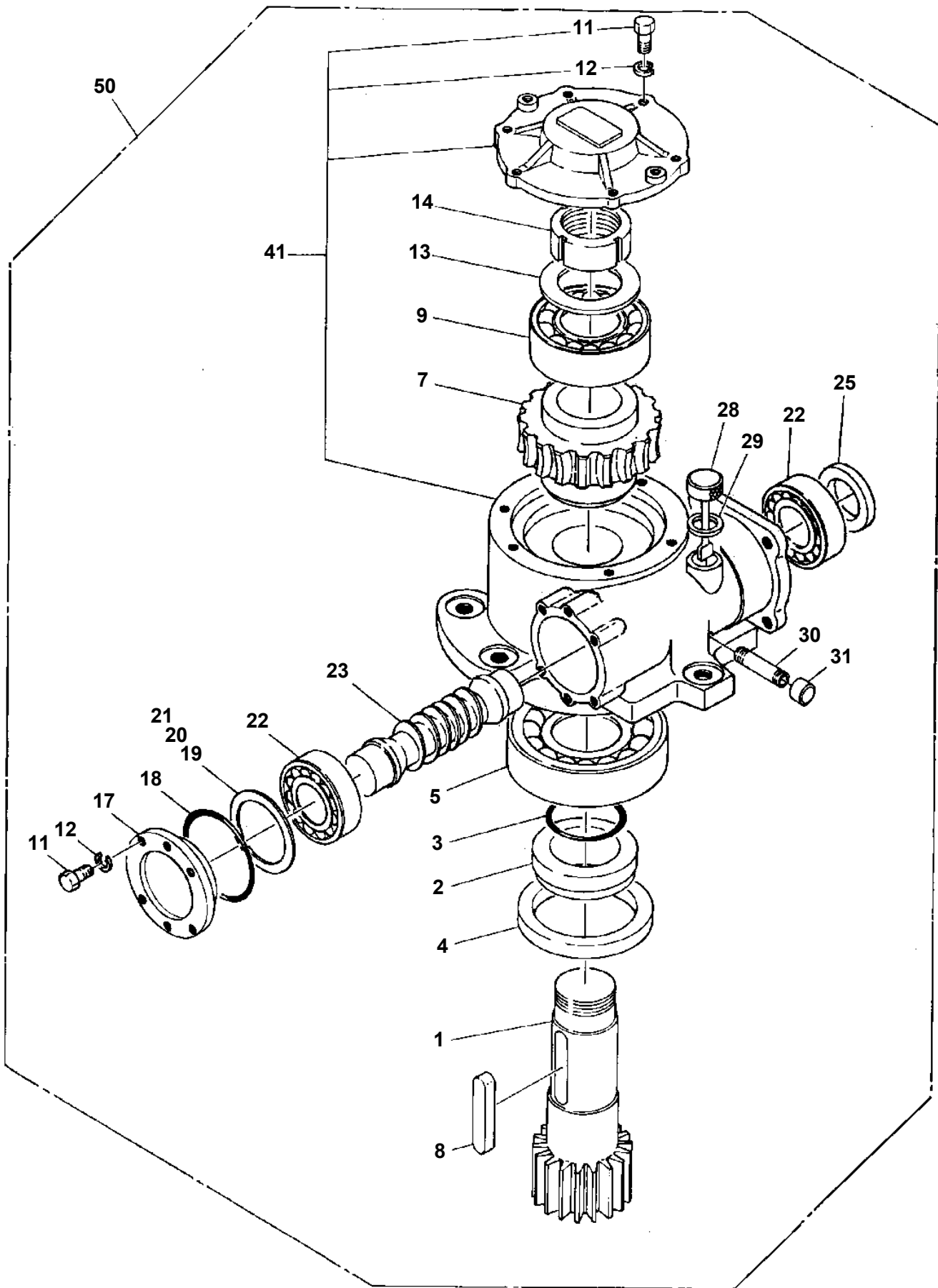
1	アウトリカ OUTRIGGER
3	カバー - インスタレーション COVER INSTALLATION

AT-141-1 42043100015 UPPER
PC1190004-01 INDICATOR,OUTRIGGER

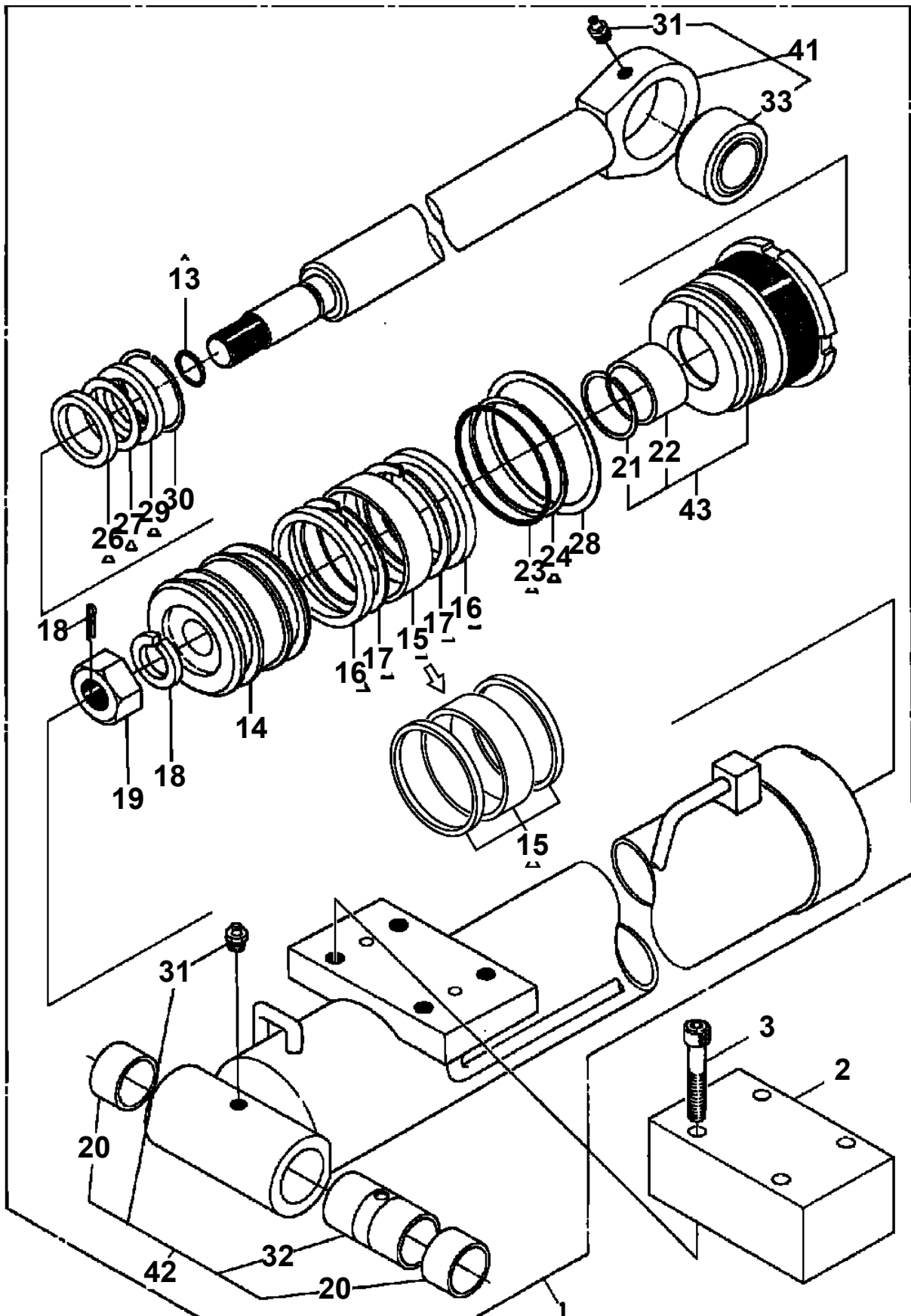
50



AT-141-1 42043100015 UPPER
PD1010049-00 REDUCER, SWING SPEED



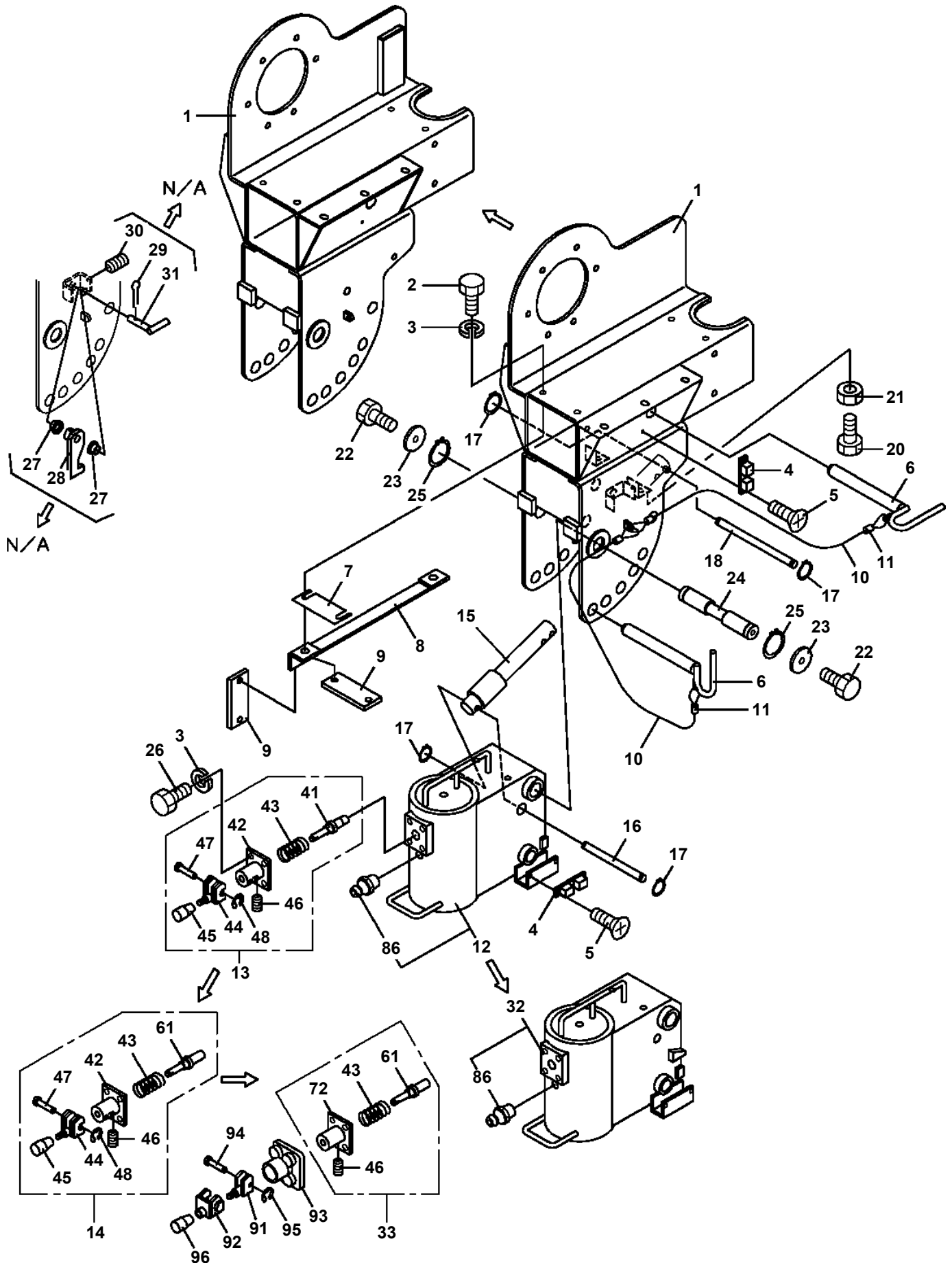
AT-141-1 42043100015 UPPER
 PE1050007-04 CYLINDER,LEVELING (UPPER)



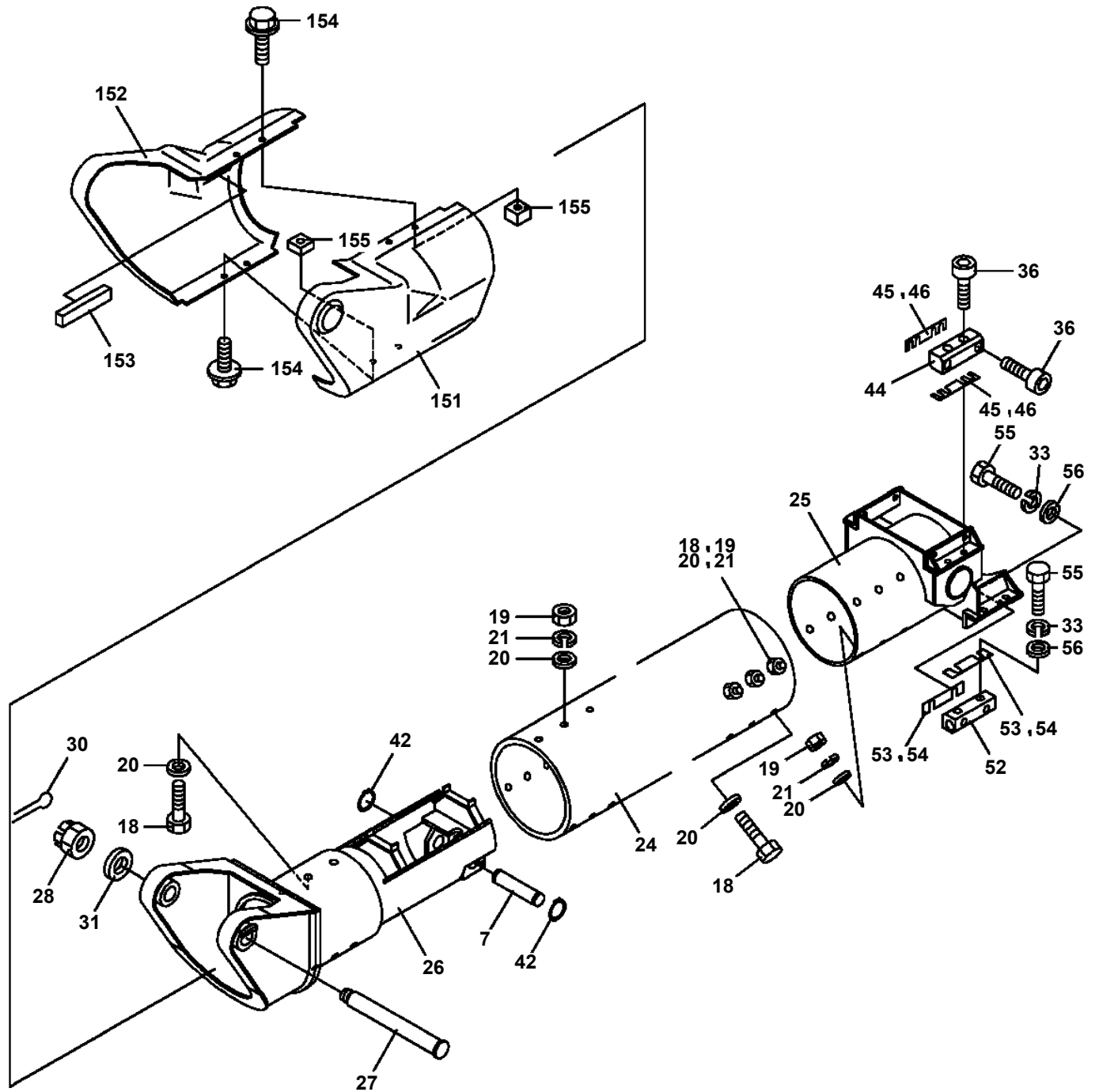
△: PACKING SET KEY NO50 (KEY NO.13,15,16,17,23,24,26,27,29)

▽: PACKING SET KEY NO60 (KEY NO.13,15,23,24,26,27,29)

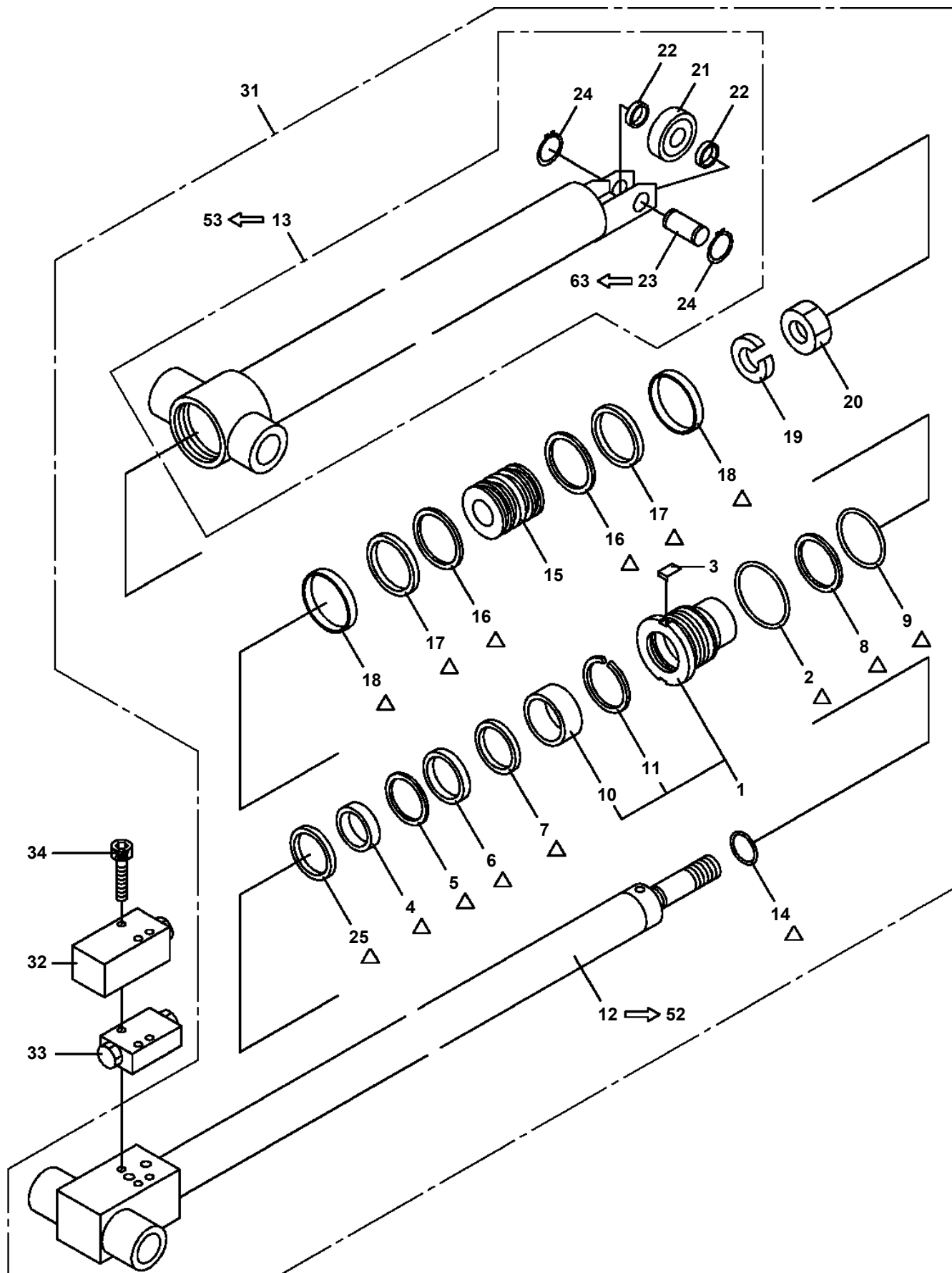
**AT-141-1 42043100015 UPPER
PF1350014-04 WINCH, JIB (SUPPORT. MANUAL JIB)**



**AT-141-1 42043100015 UPPER
PG1010243-03 BOOM**



**AT-141-1 42043100015 UPPER
PG1050148-04 CYLINDER,TELESCOPING**



Δ:PACKING SET KEY NO.100 (KEY NO.2,4,5,6,7,8,9,14,16,17,18,25)

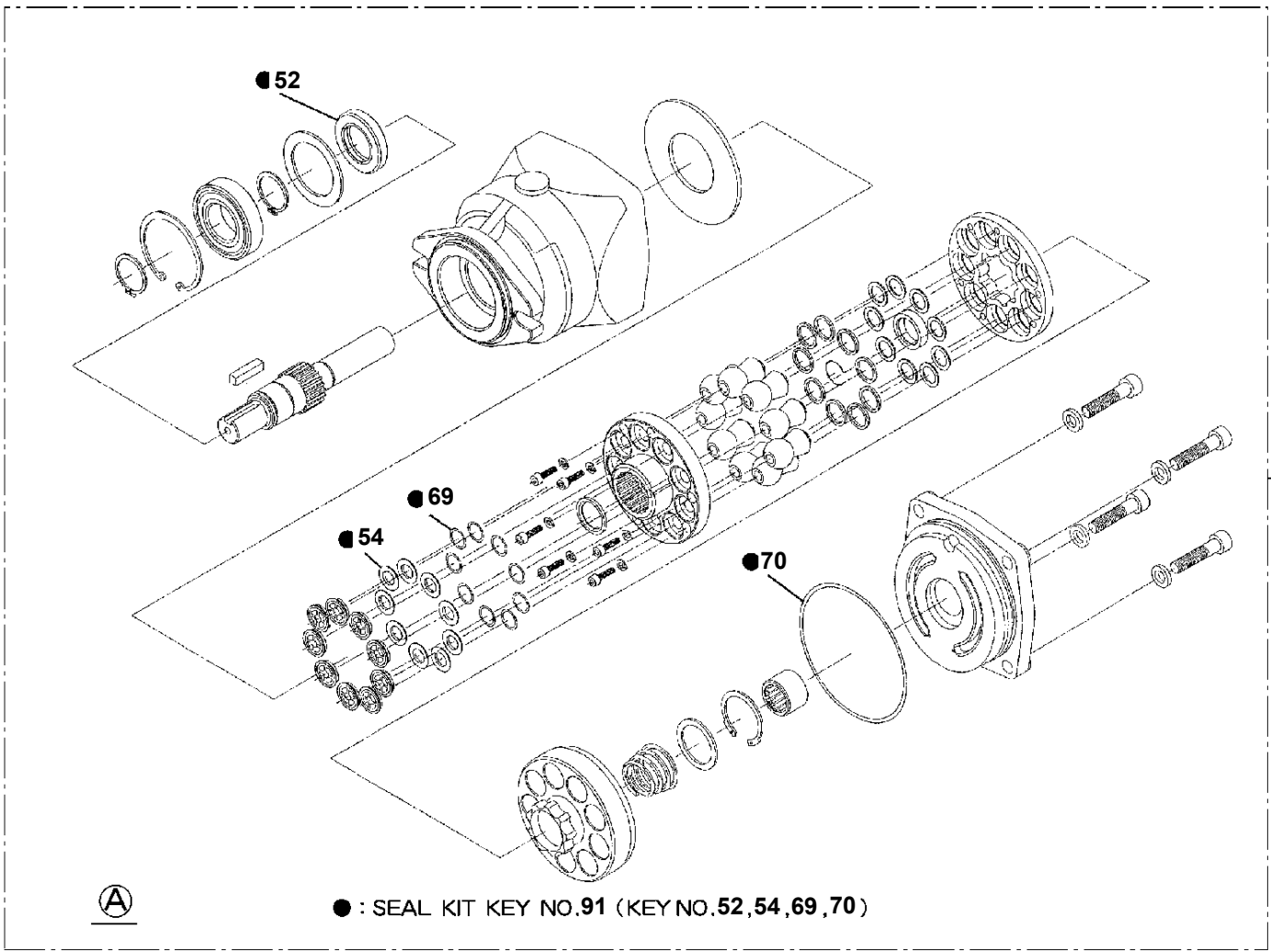
AT-141-1 42043100015 UPPER

Pos No.	Parts No	Parts Name	Qty	Unit	Technical Data	Serial No (Start)	Serial No (End)
44	80320020075	FITTING	2		KUF12-020N		
45	37000917230	FITTING	1		PF1/2XPF1/2		
46	37001600830	NUT	1		PF1/2		
47	42340230601	SUPPORT	1				
48	90131510022	BOLT,HEXAGON SOCKET	2		M10X22		226572
	90172110022	BOLT,HEXAGON SOCKET	2		M10X22	226573	
49	42341261100	SUPPORT	1				
50	90101208020	BOLT	6		M8X20		226572
	90171108020	BOLT	6		M8X20	226573	
51	42340234000	ROLLER ASSY	1				
52	90101210030	BOLT	2		M10X30		
53	90302041001	WASHER,SPRING	4		10		
54	90101210025	BOLT	2		M10X25		
55	42341070100	JOINT	1				
57	42340230501	JOINT	1				
58	80320020090	FITTING	1		KUF15-030N	225786	
60	37000300720	SLEEVE	6		12-10	225786	
61	90303071601	WASHER,PLAIN	2		16	225786	225836
62	81408000130	PIPE,STEEL	3	M	10X1.8T	225880	
63	81408000130	PIPE,STEEL	3	M	10X1.8T	225880	
64	91002801100	O-RING	2		1B P11	226241	
65	37000714020	CLAMP ASSY	2		12X2	226570	
91	42340234100	SUPPORT	1				
92	42340234220	ROLLER	1		W=15		
93	42340234230	ROLLER	3		W=12		
94	42340234240	ROLLER	4		W=9		
95	42340234210	ROLLER	4				
96	42340234200	PIN	1				
97	80136320016	PIN,SPLIT	2		2X16		
98	90303100801	WASHER,PLAIN	24		8		
101	80192486014	SCREW,MACHINE (WITH WASHER)	10		M6X14		
104	42340233010	PLATE	1				
105	42340233020	PLATE	1				
106	42340233030	COVER	1				

AT-141-1 42043100015 UPPER

Pos No.	Parts No	Parts Name	Qty	Unit	Technical Data	Serial No (Start)	Serial No (End)	Remarks	Pages
100	42350200310	HARNESS	1						
	42350200310	HARNESS	1						

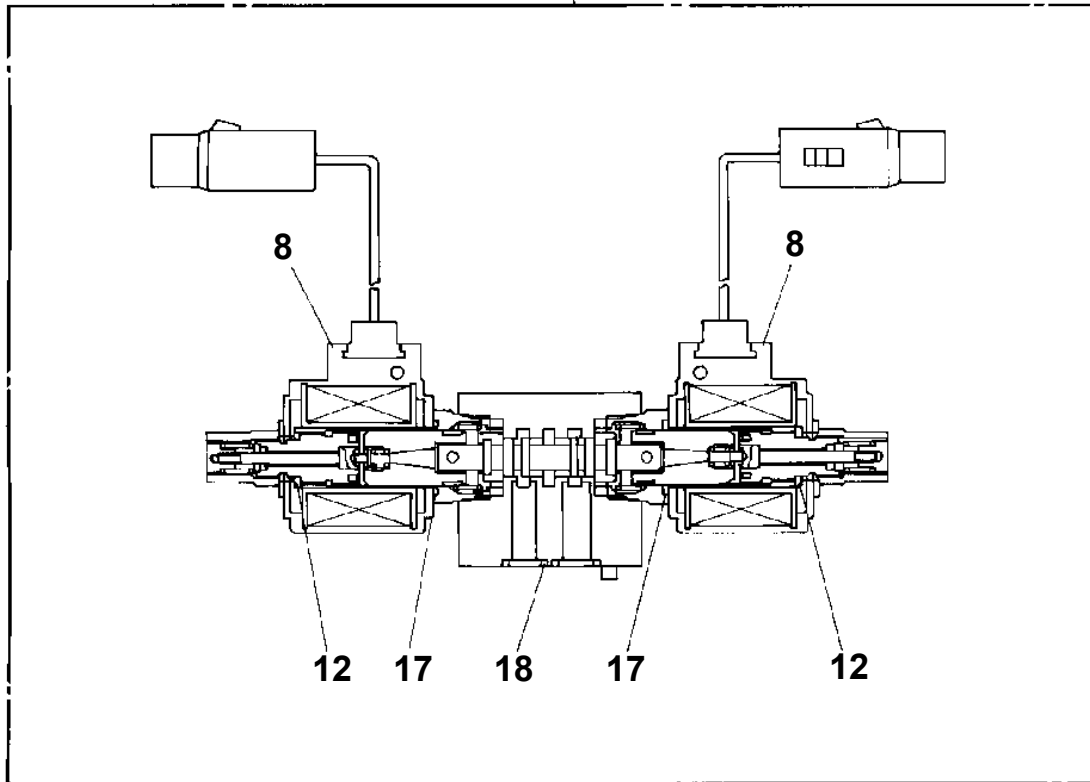
**AT-141-1 42043100015 UPPER
PI1010135-00 MOTOR, HYDRAULIC (WINCH)**



● : SEAL KIT KEY NO.91 (KEY NO.52,54,69,70)

**AT-141-1 42043100015 UPPER
PI1120097-00 VALVE,SOLENOID**

30



CLICK HERE TO **DOWNLOAD** THE COMPLETE MANUAL

- Thank you very much for reading the preview of the manual.
- You can download the complete manual from: www.heydownloads.com by clicking the link below

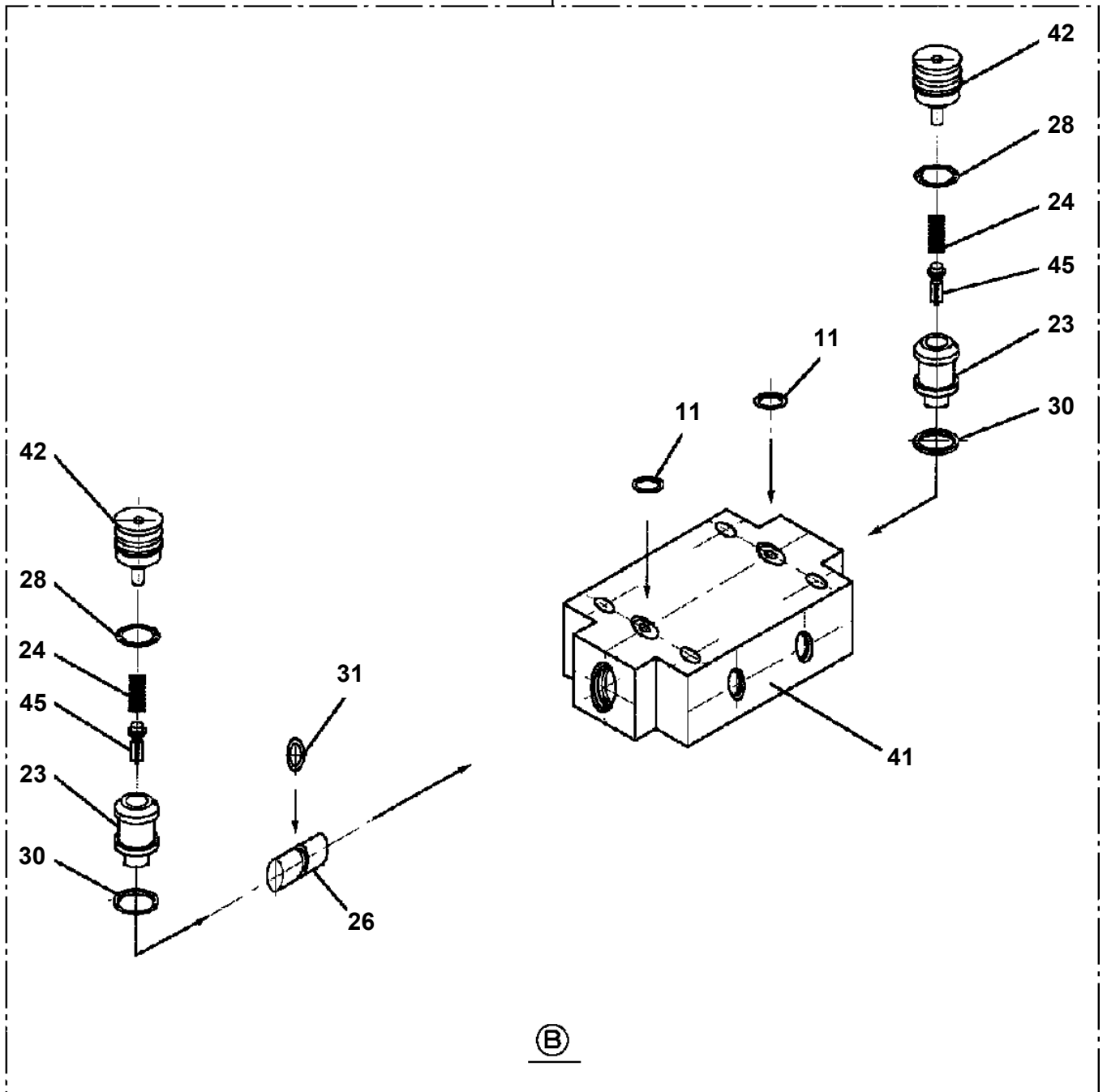


- Please note: If there is no response to CLICKING the link, please download this PDF first and then click on it.

CLICK HERE TO **DOWNLOAD** THE COMPLETE MANUAL

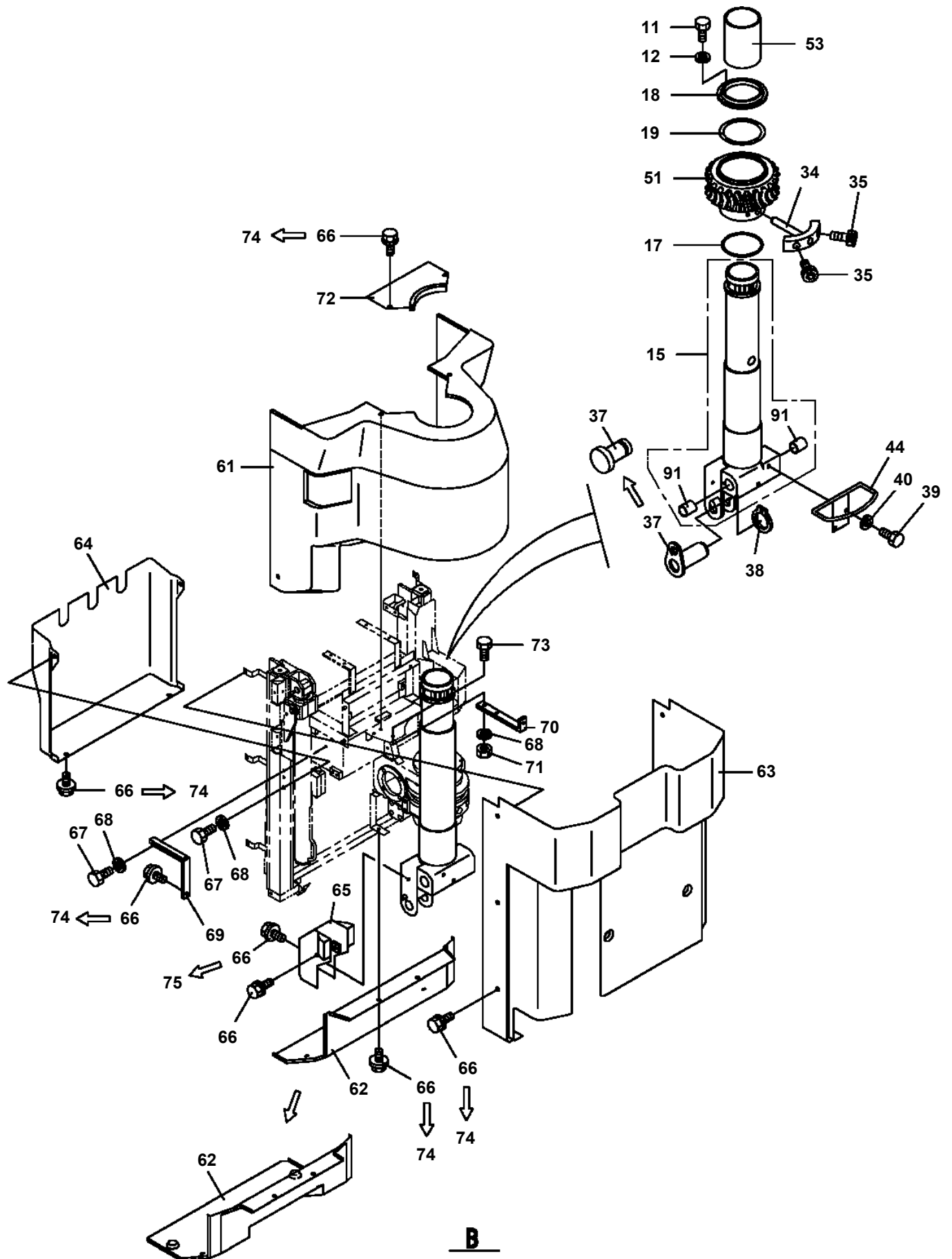
AT-141-1 42043100015 UPPER
PI1140133-01 VALVE,CHECK

100



Ⓑ

AT-141-1 42043100015 UPPER
PJ3010042-03 BUCKET (WITH LIFT)



**AT-141-1 42043100015 UPPER
PJ3010075-04 BUCKET (WITH LIFT.GRAY)**

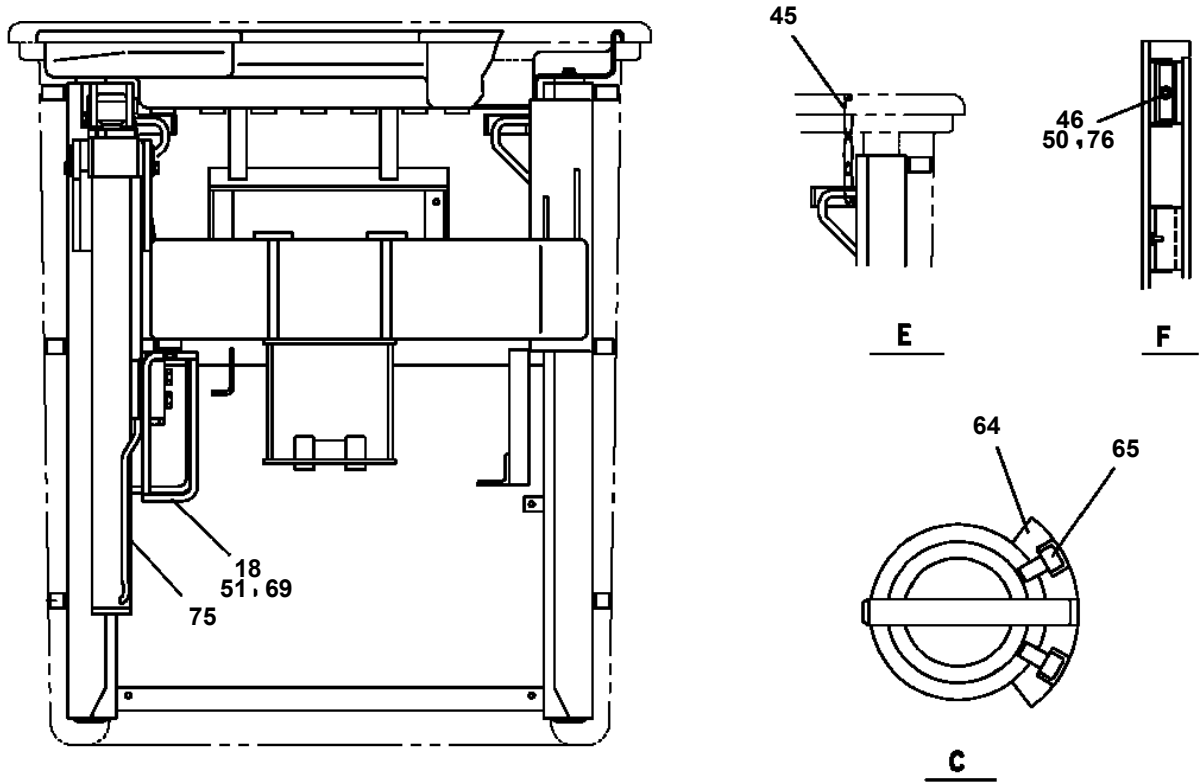


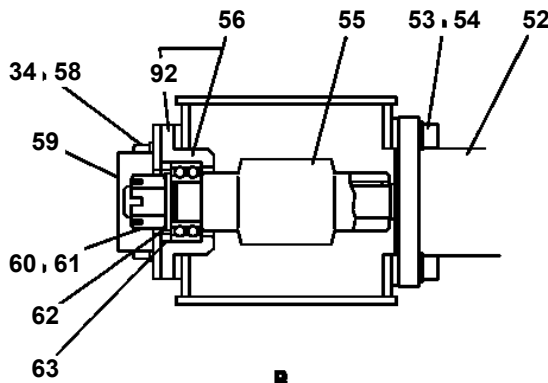
表1参照
REFER TO THE TABLE 1 BELOW

85

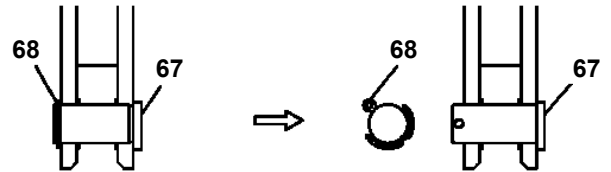
54, 58

78

表1参照
REFER TO THE TABLE 1 BELOW



B



D

指示NO. NO.	実施号機 APPLICABLE SERIAL NO.
52	~#225431
	#225433~#225444
	#225447~#225453
	#225455~#225463
55	#225465~#225469
	#225472~#225478
	#225479~#225488
	#225492~#225548



指示NO. NO.	実施号機 APPLICABLE SERIAL NO.
78	#225432, #225445
	#225446, #225454
	#225464
	#225470~#225473
85	#225479~#225481
	#225507, #225443
	#225478
	#225489~#225491
	#225549~

表1
TABLE 1

AT-141-1 42043100015 UPPER

Pos No.	Parts No	Parts Name	Qty	Unit	Technical Data	Serial No (Start)	Serial No (End)	R
98	42341860650	PLATE	3					
101	42341860110	JOINT	1					
102	80430410450	JOINT	9					
	37000713690	CLAMP ASSY	1			226075		
103	80430410650	JOINT	6					
	37000713700	CLAMP ASSY	1			226075		
104	37000713710	CLAMP ASSY	1			226075		
111	42340017510	CAP (DUST)	1					
121	42340017550	CAP (DUST)	1					

AT-141-1 42043100015 UPPER

Pos No.	Parts No	Parts Name	Qty	Unit	Technical Data	Serial No (Start)	Serial No (End)	Remarks	Pages
1	90101206014	BOLT	15		M6X14				
2	90302040601	WASHER,SPRING	15		6				
3	37000512320	PLATE	9						
4	42270480060	COVER	1						
5	90303070601	WASHER,PLAIN	6		6				
6	90101208012	BOLT	3		M8X12				
7	90302040801	WASHER,SPRING	3		8				
8	90303070801	WASHER,PLAIN	3		8				
9	42270480200	COVER	1						
10	82100001697	PLUG	1		OBS-13				
11	42270482000	COVER	1						
12	42270480020	COVER	1						
13	42270480030	COVER	1						
23	82400000349	CATCH	1						
26	82400000348	HINGE	2				225602		
31	80147310420	RIVET	12		3.2X6				
32	42270489510	COVER ASSY	1						

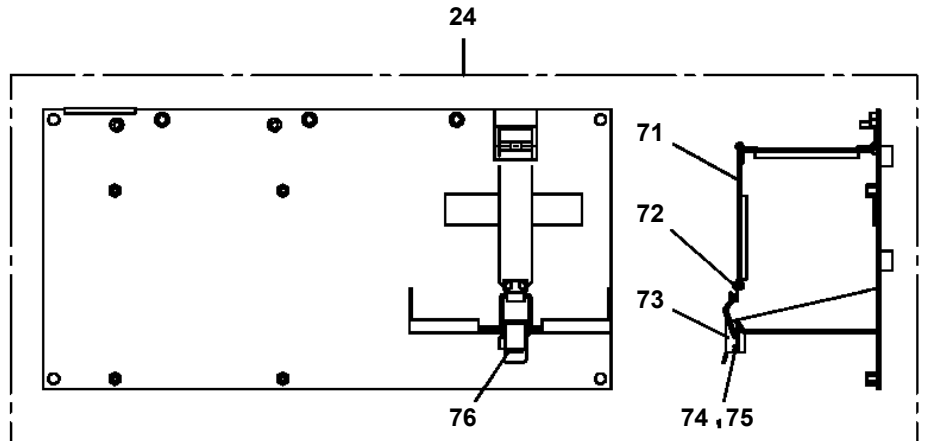
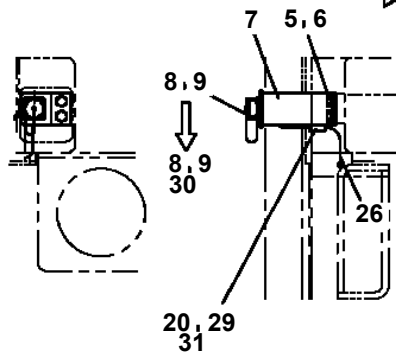
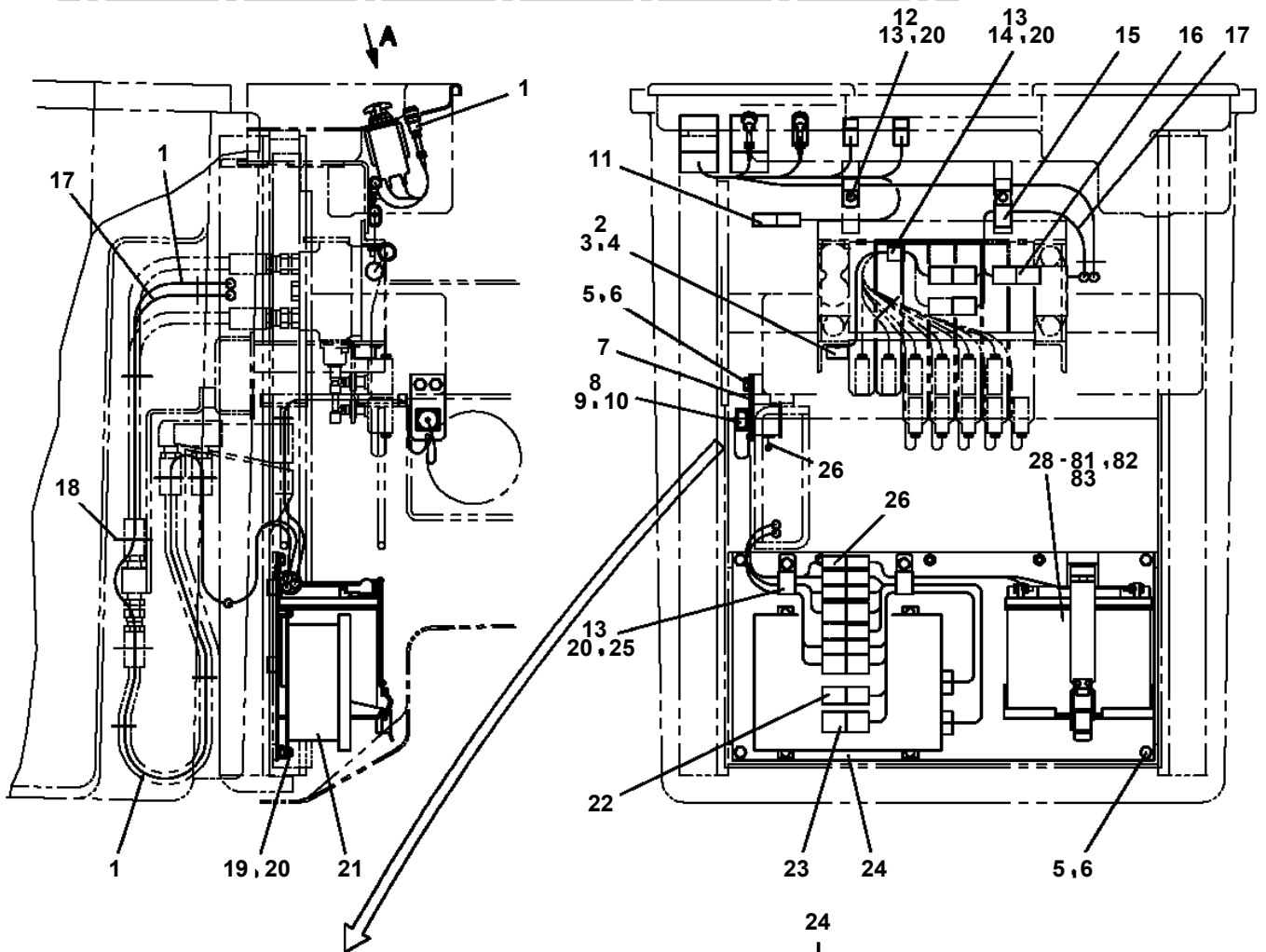
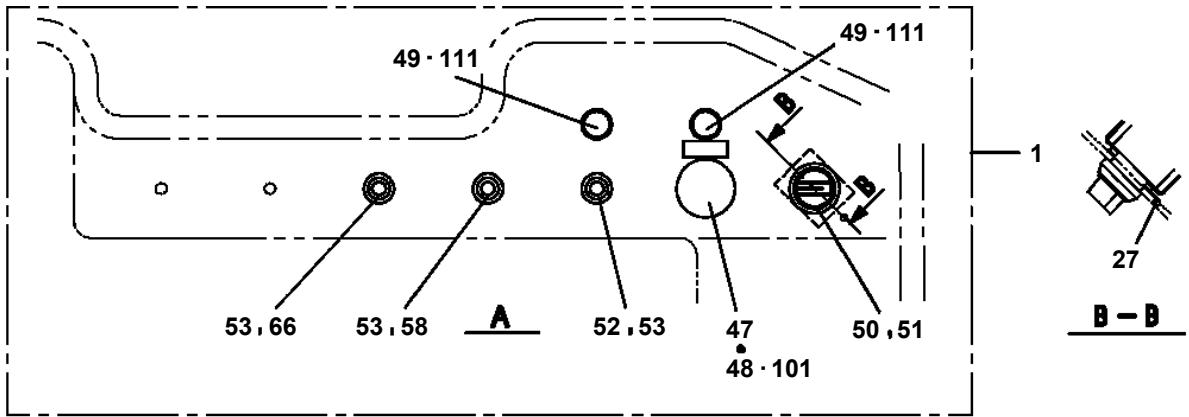
AT-141-1 42043100015 UPPER

Pos No.	Parts No	Parts Name	Qty	Unit	Technical Data	Serial No (Start)	Serial No (End)	Remarks	Pages
1	16715402000	FITTING,ELBOW	1						
2	16715403000	SLEEVE	2						
3	16715404000	NIPPLE	2						
4	81408000051	PIPE,STEEL	1	M	6X1.2T				
5	16715401000	NIPPLE	1						
6	82456201000	NIPPLE,GREASE	1		A-TYPE PT1/8				

AT-141-1 42043100015 UPPER

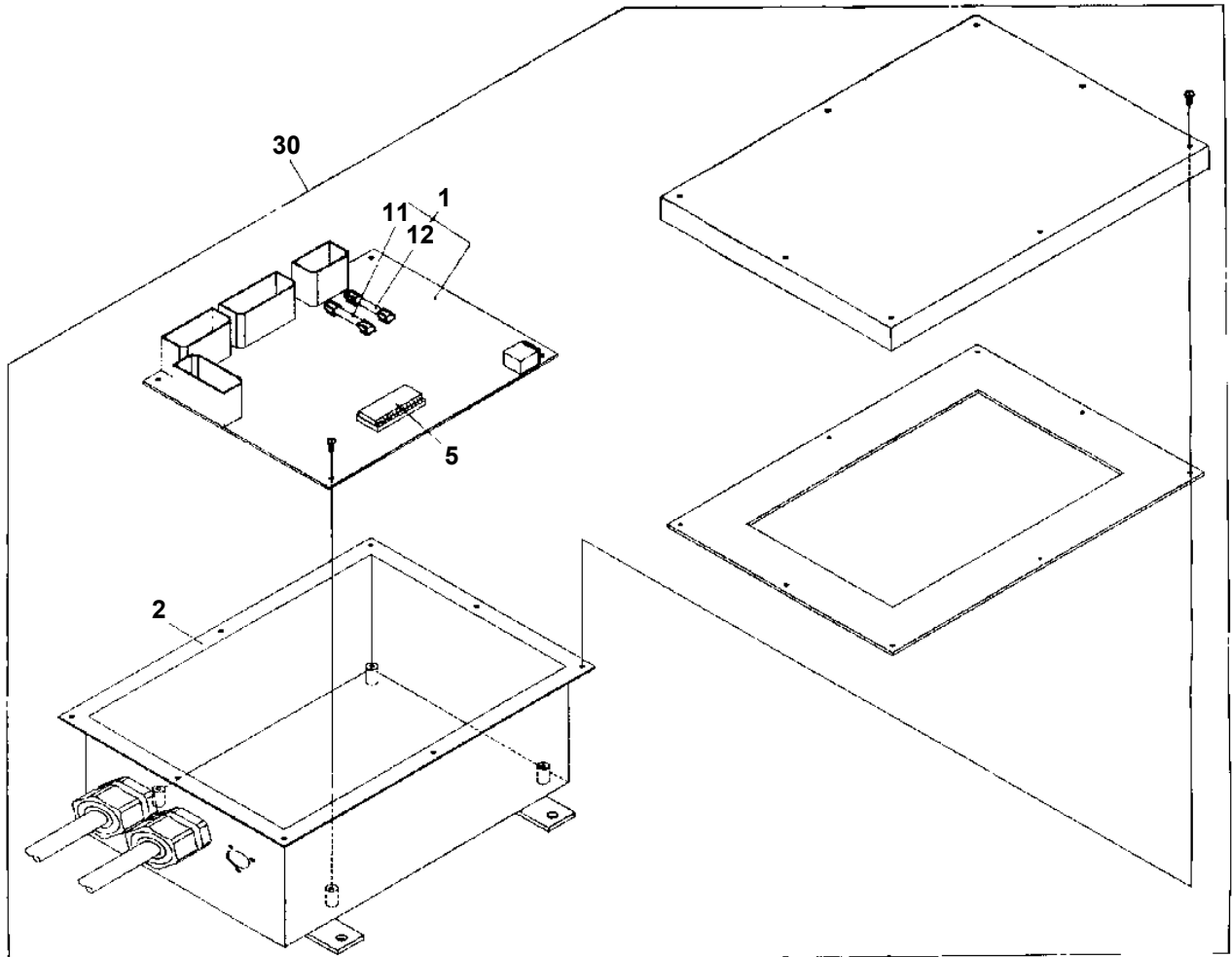
Pos No.	Parts No	Parts Name	Qty	Unit	Technical Data	Serial No (Start)	Serial No (End)
57	42350221100	CASE	1				
58	90101206008	BOLT	6		M6X8		
59	90302040601	WASHER,SPRING	6		6		
60	42350221400	COVER	1				
61	37000549400	PLATE	2				
77	82100000665	CAP (BLACK)	1				225644
107	82100002307	COVER (CONTACT BLOCK PROTECTION/BLACK)	2				
131	42350229510	COVER ASSY	1				225644
	42350229511	COVER ASSY	1			225644	
141	82198300402	KNOB (RED)	1				225644
151	82198300601	BUTTON (BLACK)	1				
161	82101350403	BUTTON	1			225454	
167	82400000349	CATCH	1				
168	80147310420	RIVET	12		3.2X6		
170	82400000348	HINGE	2				225644
	82464110002	HINGE	2			225644	

**AT-141-1 42043100015 UPPER
PN1011268-03 ELEC.ASSY (BUCKET)**

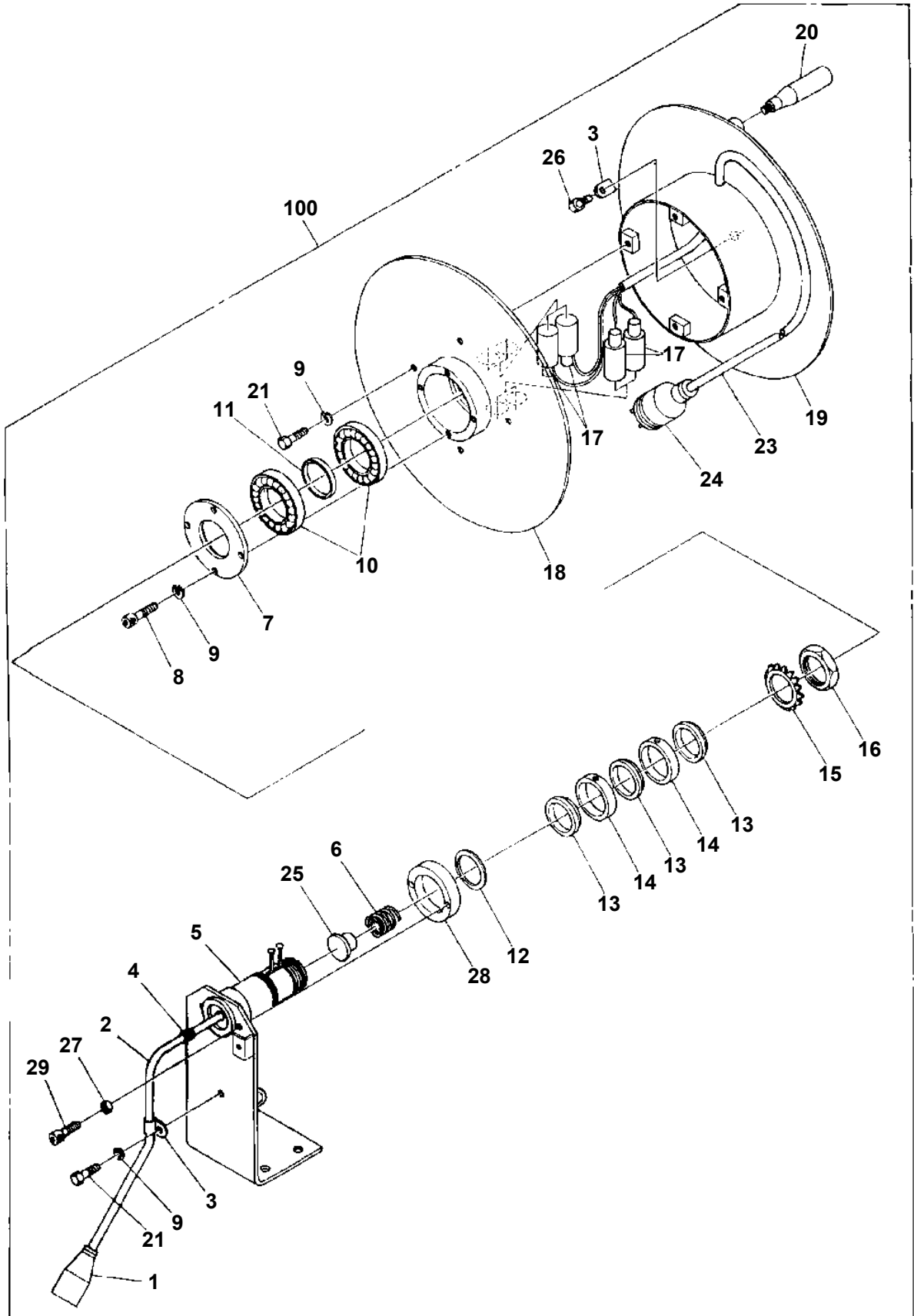


AT-141-1 42043100015 UPPER
PN1210023-01 TRANSMITTER, SIGNAL

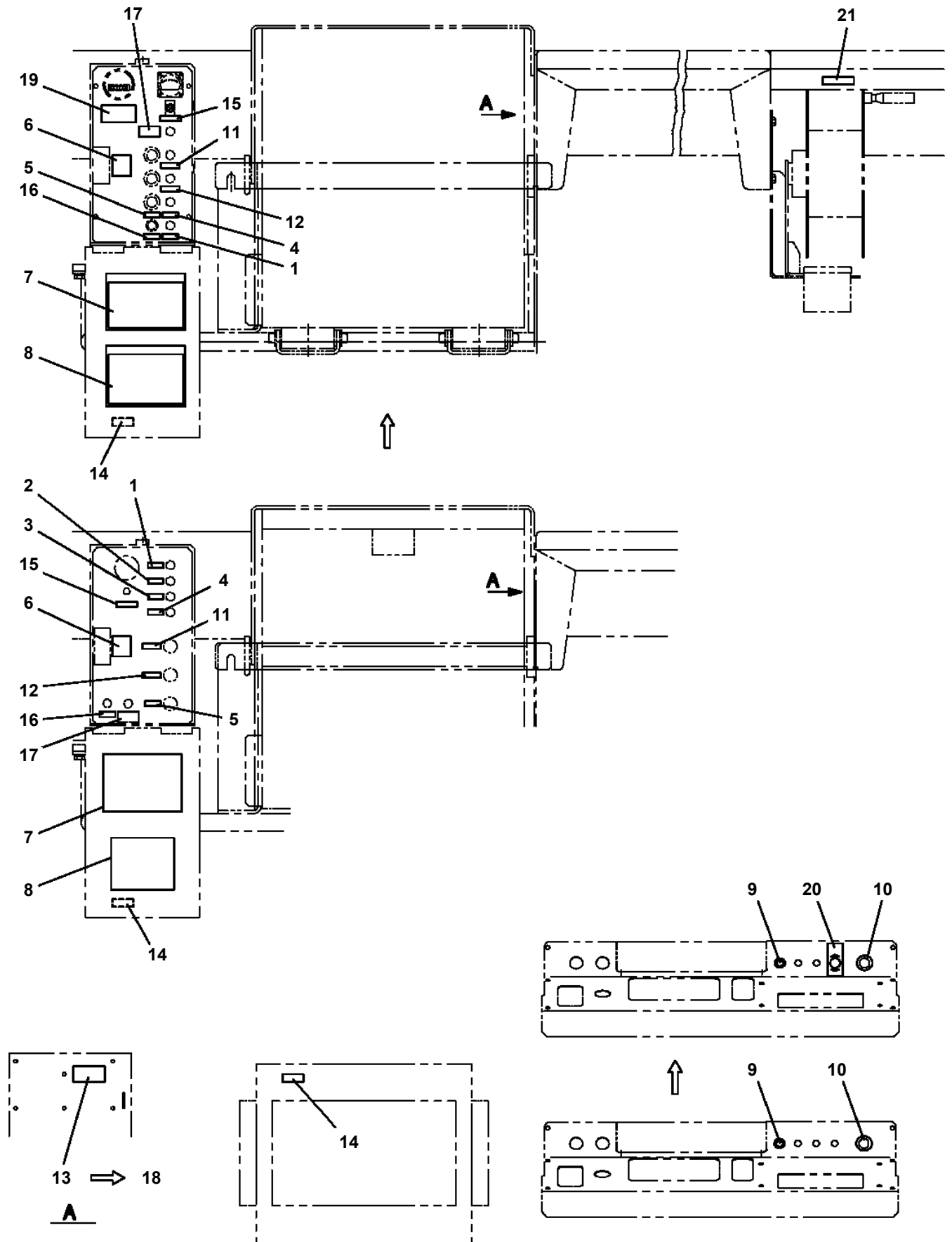
ASSEMBLY DRAWING TRANSMITTER, SIGNAL



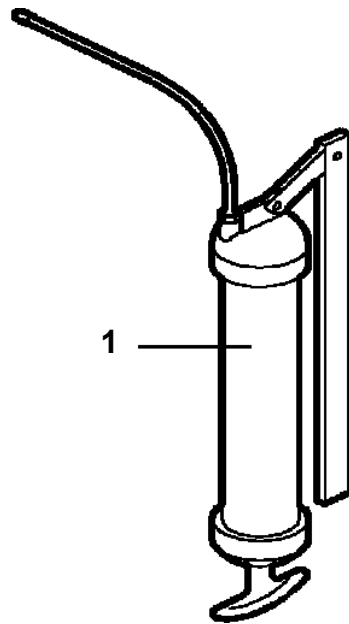
AT-141-1 42043100015 UPPER
PN1350022-00 REEL, CORD



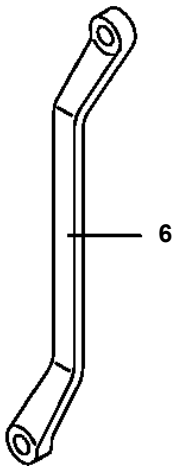
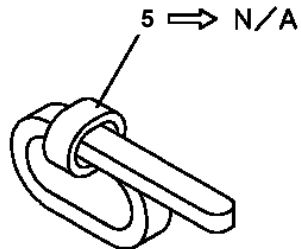
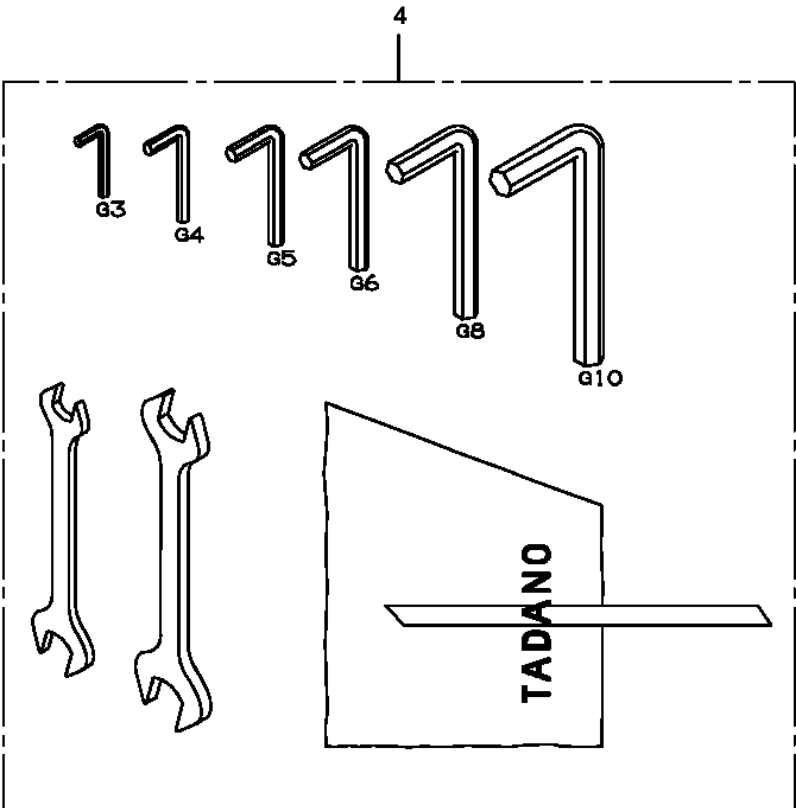
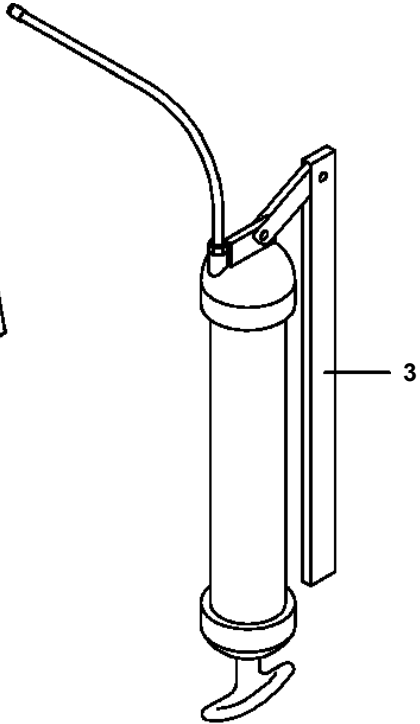
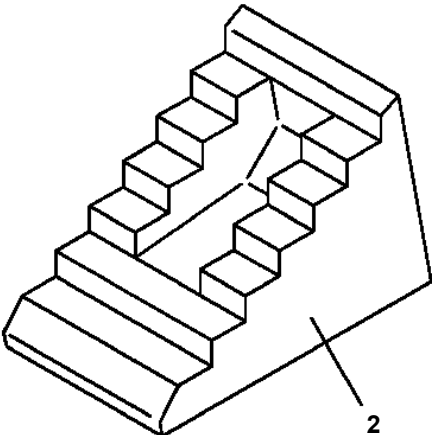
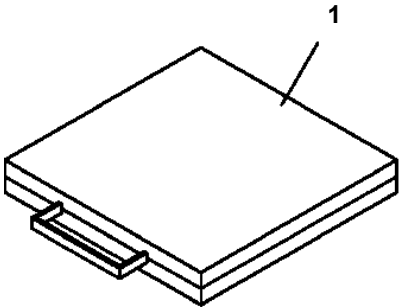
**AT-141-1 42043100015 UPPER
PO1011119-02 PLATE ASSY,NAME (CHAGER)**



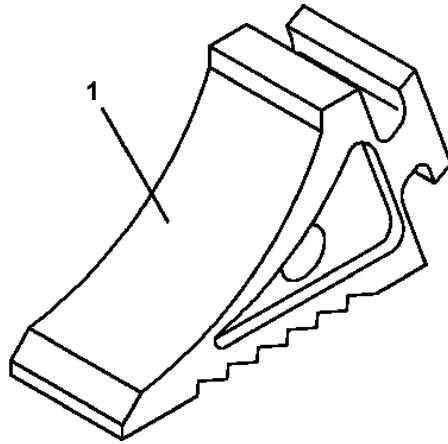
**AT-141-1 42043100015 UPPER
PP5450003-00 PUMP, GREASE (240CC)**



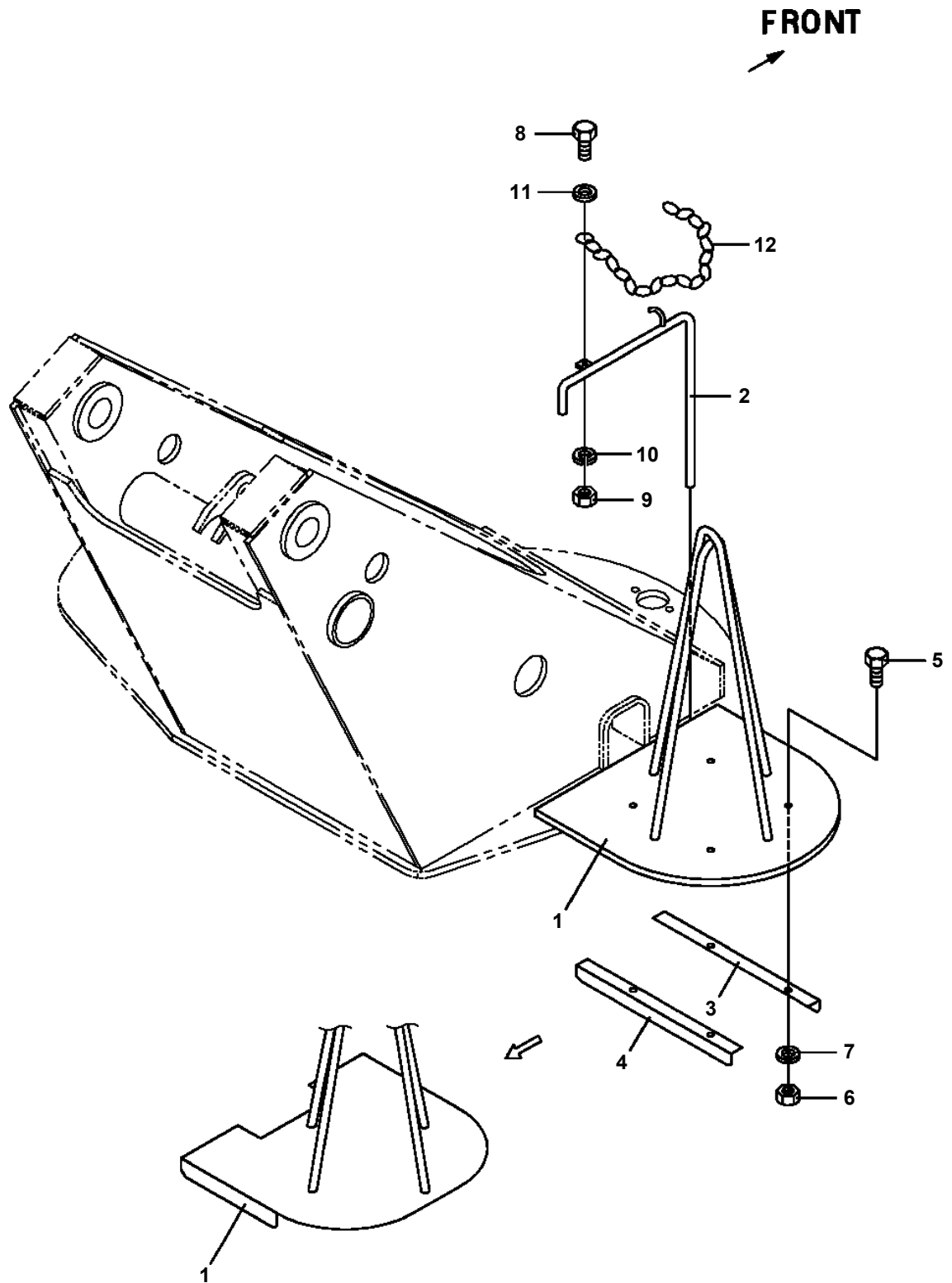
**AT-141-1 42043100015 UPPER
PW1010091-04 ACCESSORIES**



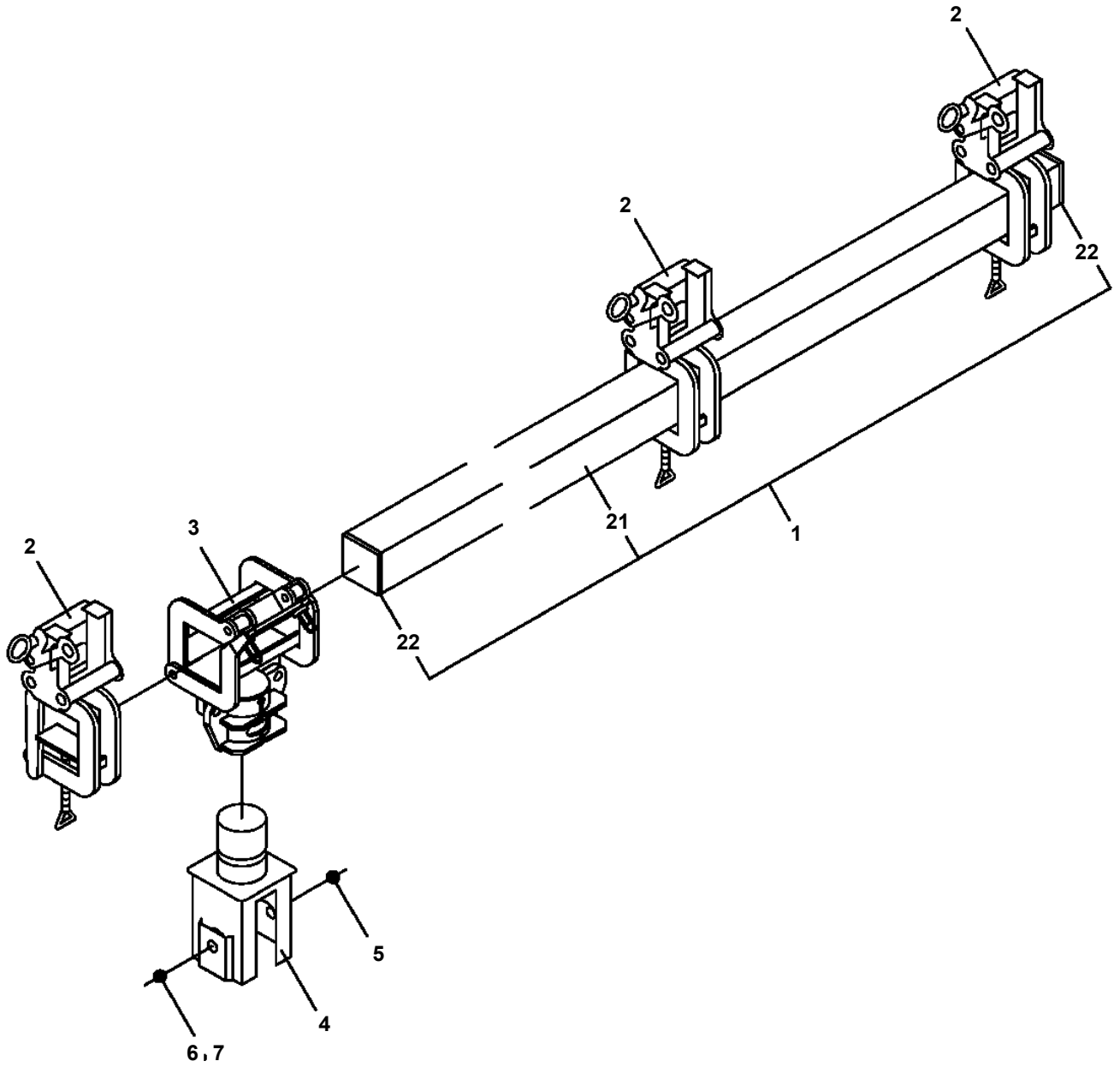
**AT-141-1 42043100015 UPPER
PW1050018-01 WEDGE (STOPPER FOR TIRE/JUSTIN)**



AT-141-1 42043100015 UPPER
PX1620009-01 MOUNT,COLOR CONE SUPPORT



**AT-141-1 42043100015 UPPER
PY1080007-01 ARM (INSULATION JIB)**



AT-141-1 42043100015 UPPER

Pos No.	Parts No	Parts Name	Qty	Unit	Technical Data	Serial No (Start)	Serial No (End)	Remarks
1	90131508025	BOLT,HEXAGON SOCKET	4		M8X25			
2	36050842000	JOINT ASSY (SUB PLATE)	1					
3	36051151000	BOOSTER ASSY (40T)	1					
11	36050395012	COVER (A)	1				226013	
12	91002806700	O-RING	1		1B P67		226013	
13	91411006700	RING,BACKUP	1		P67		226013	
14	36050345020	HEAD	1					
15	12235104020	SPRING	1					
16	80560061000	BALL,STEEL	1		3/8			
17	36050345030	PACKING SET	1					
19	36050395031	TUBE	1					
20	91001209500	O-RING	2		1A G95			
21	36050395042	COVER (B)	1					
22	91411004000	RING,BACKUP	1		P40		226013	
23	91001104000	O-RING	1		1A P40		226013	
24	36050395051	ROD	1					
25	36050395061	TUBE	1					
26	36050395071	ROD,PUSH	1					
27	91002802600	O-RING	1		1B P26			
28	36050345090	PISTON	1					
29	91411009000	RING,BACKUP	2		P90			
30	91001109000	O-RING	1		1A P90			
31	36050125110	NUT	1					
32	36050845011	COVER (SIDE)	1					
33	91002801200	O-RING	1		1B P12			
34	80602110170	RING,RITAINING	1		R17			
35	91002801000	O-RING	2		1B P10			
36	90201201000	NUT	1		M10			
37	36050125130	BUSH	1					
38	91001100800	O-RING	1		1A P8			
39	91411000800	RING,BACKUP	1					
40	36050395100	BOLT,STUD	4		L=369		226013	
41	90201201400	NUT	4		M14			
42	36050801400	WASHER,PLAIN	4					
43	91002909500	O-RING	2		1B G95			
44	90131505015	BOLT,HEXAGON SOCKET	4		M5X15			
45	90740006060	SCREW,SET	1		M6X6			
48	59457138000	PLUG ASSY	1					
50	80316030040	PLUG	1		PT1/4			
51	36050135101	SWITCH ASSY	1				226013	
52	91002800800	O-RING	1		1B P8			
61	36050135131	SWITCH,LIMIT	1				226013	
71	36051155010	PACKING SET	1					

AT-141-1 42043100015 UPPER

Pos No.	Parts No	Parts Name	Qty	Unit	Technical Data	Serial No (Start)	Serial No (E
1	42473530020	GASKET	2				
2	42470510100	PLATE,NAME	3				
3	80456240600	JOINT,SELF SEALING (WITH DUST CAP)	1				
4	42473531000	SELECTOR,BOOSTER (VALVE)	1				
5	37002414120	HOSE	1		L=375		
6	42473532500	LEVER ASSY	1				
7	90101506012	BOLT	2		M6X12		
8	90302040601	WASHER,SPRING	3		6		
9	36631120050	NUT	2		M20		
10	42473530010	PLATE	1				
11	42310040050	ROPE (TETORON)	2				
12	82100001735	SLEEVE	4				
13	37000551340	PLATE	1				
14	91810130240	FASTENER	6				
15	42473830010	CABLE	1				225325
	42473530500	HARNESS	1			225326	
16	89630101000	HOSE,VINYL	1		4X6,1M		
17	42473440020	JOINT	1				
18	42470400100	JOINT,SELF SEALING (WITH CAP)	1				
19	42470512010	SWITCH,LIMIT	1				225325
	82100002359	SWITCH,LIMIT	1			225326	
20	82100002247	SWITCH	1				225325
	42473440100	SWITCH	1			225326	
21	90201200600	NUT	1		M6		
22	42340013400	GASKET	1				
31	82430208020	GRIP	1				
41	42471437520	CAP	1				
51	42470407570	CAP	1				

AT-141-1 42043100015 UPPER

Pos No.	Parts No	Parts Name	Qty	Unit	Technical Data	Serial No (Start)	Serial No (End)
1	42262927540	HOOK ASSY (WITH RUBBER,L=250)	2				
2	42262927530	HOOK ASSY (WITH RUBBER,L=2100)	2				
3	42261647530	BELT (WITH BUCKLE)	1				
11	42261647520	HOOK	4				
30	42261730000	COVER,BUCKET	1				

AT-141-1 42043100015 UPPER

Pos No.	Parts No	Parts Name	Qty	Unit	Technical Data	Serial No (Start)	Serial No (End)	Remarks
1	42474160000	HANGER (FOR BUCKET)	1					

CLICK HERE TO **DOWNLOAD** THE COMPLETE MANUAL

- Thank you very much for reading the preview of the manual.
- You can download the complete manual from: www.heydownloads.com by clicking the link below



- Please note: If there is no response to CLICKING the link, please download this PDF first and then click on it.

CLICK HERE TO **DOWNLOAD** THE COMPLETE MANUAL