

## **AT-120S-2 42081200062 UPPER**

PD2000155-00 SWING UNIT

PG2000181-00 BOOM UNIT

PH1000550-00 SAFETY DEVICES (MOTION CONTROLLER)

PJ3000421-00 PLATFORM SYSTEM

PK2000691-00 FRAME UNIT

PO1000149-00 INDICATION PLATES

PW1000118-00 ACCESSORIES & TOOLS

PY1000993-01 OPTIONS,1

PY2000155-01 OPTIONS,2

ASSEMBLY

CLICK HERE TO **DOWNLOAD** THE COMPLETE MANUAL

- Thank you very much for reading the preview of the manual.
- You can download the complete manual from: [www.heydownloads.com](http://www.heydownloads.com) by clicking the link below



- Please note: If there is no response to CLICKING the link, please download this PDF first and then click on it.

CLICK HERE TO **DOWNLOAD** THE COMPLETE MANUAL

# AT-120S-2 42081200062 UPPER

Pos No.	Parts No	Parts Name	Qty	Unit	Technical Data	Serial No (Start)	Serial No (End)	Remarks	Pa
1	(*****)	FRAME	1						000
2	(*****)	OPE.ASSY,OUTRIGGER	1						000
3	(*****)	PIPING,LOWER (TANK)	1						000
4	(*****)	PIPING,OUTRIGGER	1						000
5	(*****)	ELEC.ASSY (FRAME)	1						000

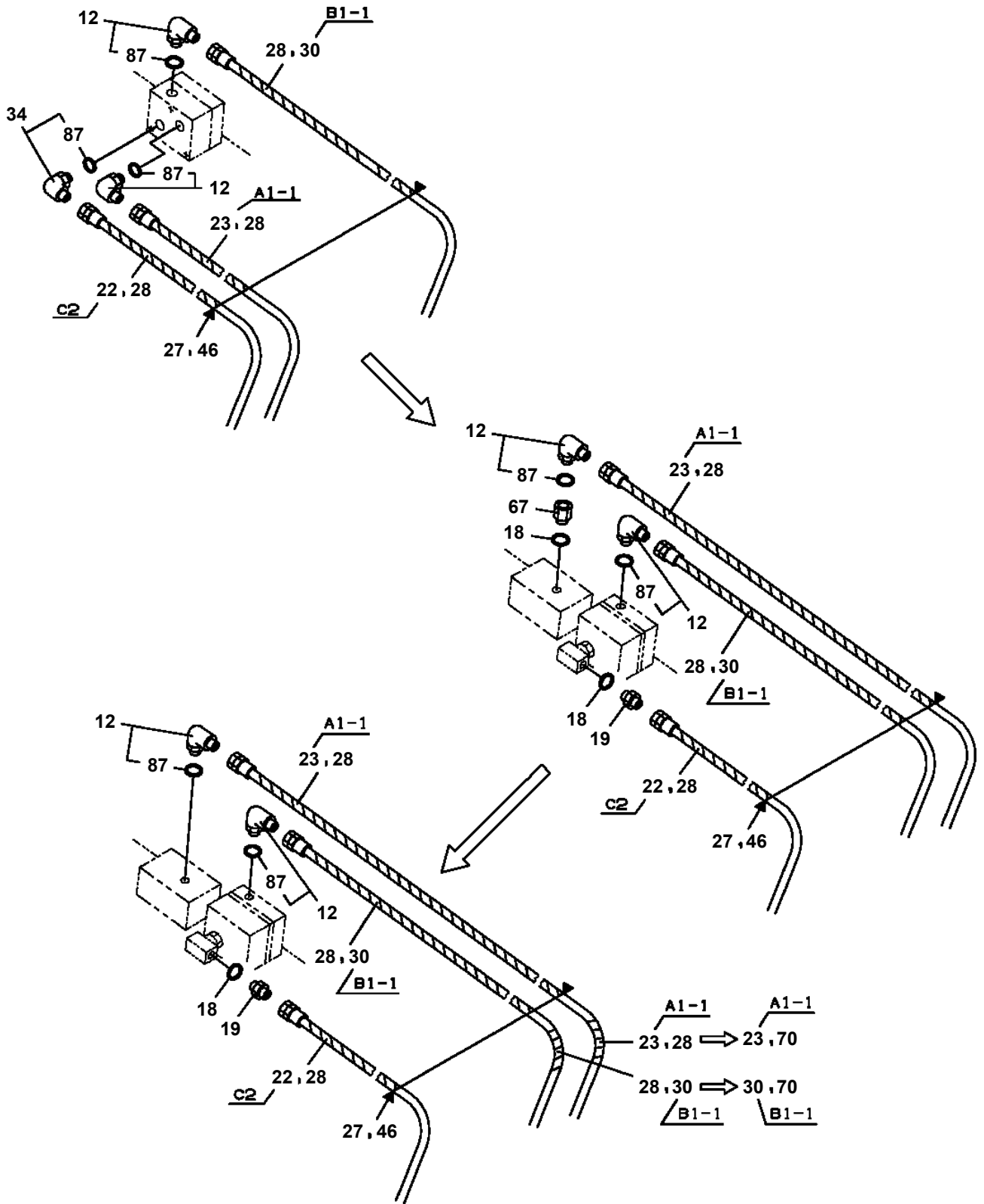
## **AT-120S-2 42081200062 UPPER**

PN1013373-04 ELEC.ASSY (DISPLAY ALTERATION SW)  
PN1013375-00 ELEC.ASSY (SWING FRAME,OPTION SW)  
PN1013376-00 ELEC.ASSY (DECK OPTION,SW)  
PN1013377-00 ELEC.ASSY (DECK OPTION,SW)  
PN1013417-03 ELEC.ASSY (INTERFERENCE PREVENTION CANCEL SW)  
PN1014099-02 ELEC.ASSY (FLICKER LAMP)  
PN1014152-00 ELEC.ASSY (BOOM)  
PN1014153-00 ELEC.ASSY (PLATFORM)  
PN1014154-00 ELEC.ASSY (SWING FRAME)  
PN1014155-00 ELEC.ASSY (FRAME)  
PN1060171-04 SWITCH PANEL  
PN1070023-07 ELECTRICAL PARTS, BOOM  
PN1080192-02 LAMP (FLICKER)  
PN1080303-00 LAMP (WORKING)  
PN1080304-00 LAMP (HALOGEN LIGHT/AC120V 500W)  
PN1080324-03 LAMP (YELLOW)  
PN1110469-01 RELAY ASSY  
PN1340002-01 INDICATOR,LAMP  
PN1430043-00 GENERATOR  
PO1013958-00 PLATE ASSY,NAME (BOX,OPERATION)  
PO1014557-00 PLATE ASSY,NAME (UPPER)  
PP5450004-00 PUMP,GREASE (400CC)  
PS5530267-00 SWITCH ASSY (WITH HARNESS,5 SW)  
PS5530449-00 SWITCH ASSY  
PV5140019-00 VALVE ASSY,RELIEF  
PW1010375-00 ACCESSORIES  
PW1030049-01 TOOLS  
PW1050018-01 WEDGE (STOPPER FOR TIRE/JUSTIN)  
PW5110002-00 WEDGE (STOPPER FOR TIRE/WAZUMI)  
PW5110003-00 WEDGE (STOPPER FOR TIRE/NAKAMURA KIKI)  
PX1260144-01 STEP (SWING FRAME)  
PX1260218-00 STEP (BOOM)  
PX1480036-02 MOUNT,GENERATOR (50HZ)  
PX1940207-01 MOUNT (PLATE/LED)  
PX5420011-02 MOUNT ASSY,GENERATOR (50HZ/60HZ)  
PY1090001-00 BELT,SAFETY  
PY1840005-00 BREAKER  
PY1910021-00 HOSE (FOR GREASE PUMP)  
PY2370006-02 PANEL,CONTROL  
PZ0000000-00 COVER ASSY

# AT-120S-2 42081200062 UPPER

Pos No.	Parts No	Parts Name	Qty	Unit	Technical Data	Serial No (Start)	Serial No (End)	Remarks	P
38	33630817510	POTENTIOMETER	1						
100	42630811000	BRUSH,ROTARY JOINT	1						

**AT-120S-2 42081200062 UPPER  
PB1910035-05 PIPING (SWING FRAME)**



# AT-120S-2 42081200062 UPPER

Pos No.	Parts No	Parts Name	Qty	Unit	Technical Data	Serial No (Start)	Serial No (End)	Remarks
1	36637490000	VALVE,MANUAL CONTROL	1					
2	90101208025	BOLT	3		M8X25			
3	90302040801	WASHER,SPRING	3		8			
4	32700007500	LEVEL	1					
5	42701200100	LEVER	1					
6	42701200200	LEVER	1					
7	42701200300	LEVER	1					
8	42701200400	LEVER	1					
9	42701200500	LEVER	1					
10	31323330200	KNOB (RED)	1					
11	31323330100	KNOB (BLACK)	4					
12	37000105610	PIN	10		L=18			
13	90303070501	WASHER,PLAIN	10		5			
14	80136320010	PIN,SPLIT	10		2X10			

# AT-120S-2 42081200062 UPPER

Pos No.	Parts No	Parts Name	Qty	Unit	Technical Data	Serial No (Start)	Serial No (End)	R
1	36132155010	PLATE (BASE)	1					
2	36132155020	CASE	1					
3	36132155030	COVER	1					
8	36132155080	BRACKET	1					
9	36131805010	PACKING	1					
10	36131745010	POTENTIOMETER	1					
11	36132155090	GEAR	1					
12	36132155100	GEAR	1					
13	36132155110	WIRE ASSY	1					
14	36132155120	CORD ASSY	1					
51	36132155140	SPRING ASSY	1					
100	36132150000	DETECTOR,OUTRIGGER LENGTH	1					

## AT-120S-2 42081200062 UPPER

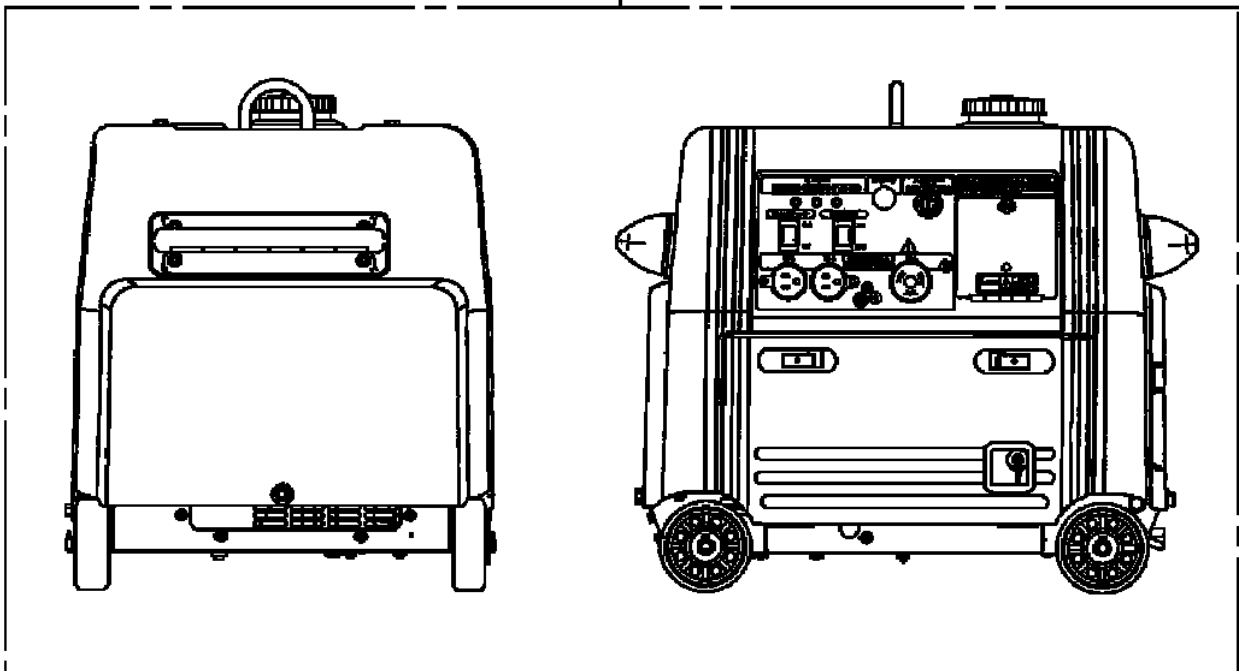
Pos No.	Parts No	Parts Name	Qty	Unit	Technical Data	Serial No (Start)	Serial No (End)
2	36081560000	REDUCER,SWING SPEED	1				
3	90171118070	BOLT (DACRO)	3		M18X70		
4	90303501805	WASHER,PLAIN	6		18		
5	90201781800	NUT (DACRO)	3		M18		
6	90171212035	BOLT (DACRO)	2		M12X35	HA5890	HA5889
	90174112035	BOLT	2		M12X35		
7	90710012400	SCREW,SET	2		M12X40		
8	90203201200	NUT	4		M12		
9	90172112035	BOLT,HEXAGON SOCKET	2		M12X35		
10	90302041201	WASHER,SPRING	2		12		
11	36662590000	MOTOR,HYDRAULIC (SWING)	1			HA5802	HA5801
	36664070000	MOTOR,OIL	1				
12	91002908500	O-RING	1		1B G85		
31	37002302450	BEARING,SWING (NSK)	1				
32	37002303560	BEARING,SWING (NIHON MONORACE)	1				
33	37002304750	BEARING,SWING (KOYO)	1				
41	37002399010	SEAL (UP,DOWN-SIDE SET)	1				
42	82456201000	NIPPLE,GREASE	6		A-TYPE PT1/8		

# AT-120S-2 4208120062 UPPER

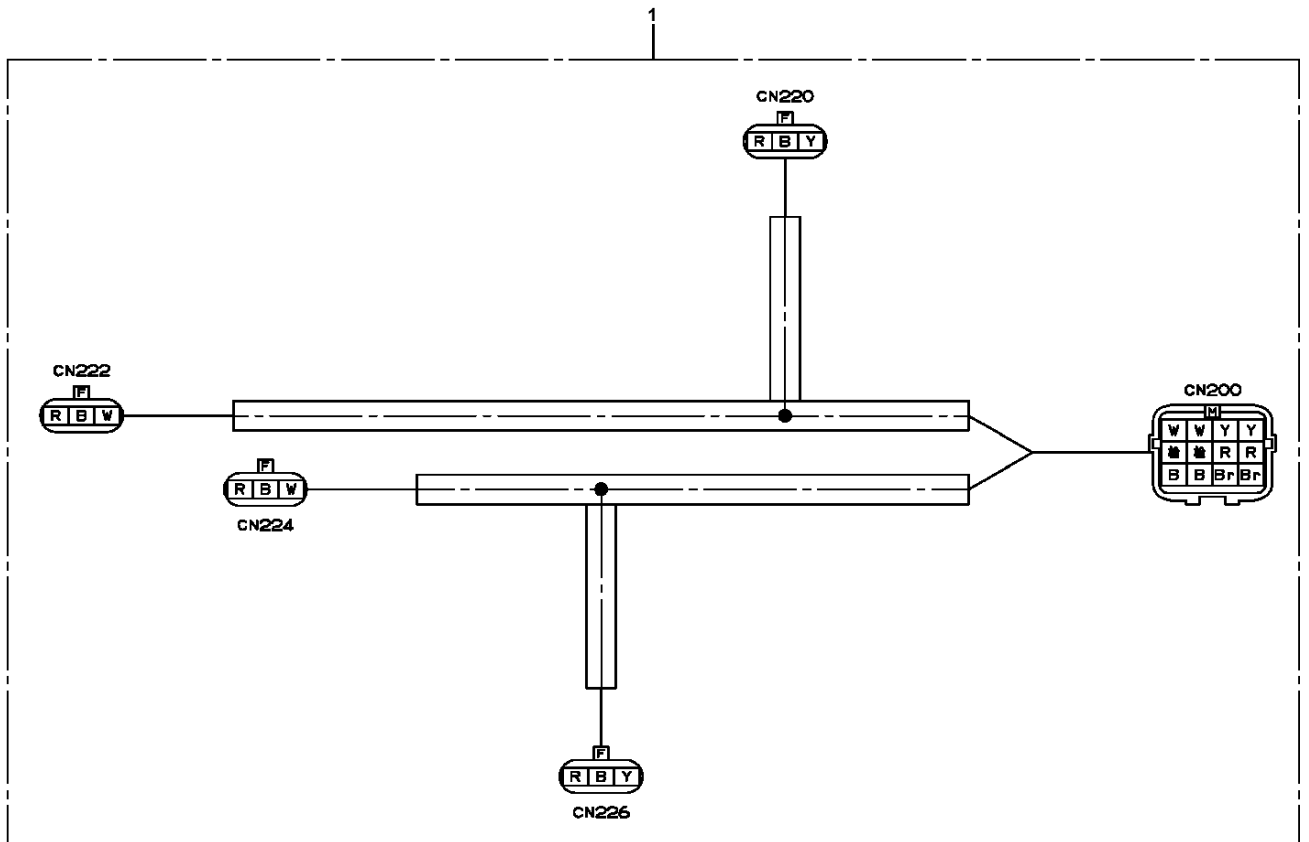
Pos No.	Parts No	Parts Name	Qty	Unit	Technical Data	Serial No (Start)	Serial No (End)	Remarks
1	42202069510	BOOM,BASE	1					
2	42202062000	BOOM,2ND	1					
3	42202069530	BOOM,TOP	1					
4	42202064000	SUPPORT	1					
5	82456201000	NIPPLE,GREASE	6		A-TYPE PT1/8			
6	90101208012	BOLT	6		M8X12			
7	90302040801	WASHER,SPRING	10		8			
8	42202150100	COVER	1					
9	37000179810	PIN	1					
10	42201510040	PLATE	1					
11	82400000459	CAP	5					
12	90303070601	WASHER,PLAIN	4		6			
13	37000400950	BEARING,PLAIN	4					
14	37000160840	PIN	1					
15	14231508000	PLATE	2					
16	90171112025	BOLT	4		M12X25			
17	90302041201	WASHER,SPRING	4		12			
18	42201510100	RETAINER	4					
19	37002007860	PLATE,SLIDE	4				HA5659	
	37002015410	PLATE,SLIDE	4			HA5660		
20	37000559120	PLATE	36		T=0.8			
21	90171108020	BOLT	2		M8X20			
22	90171110022	BOLT	4		M10X22			
23	90302041001	WASHER,SPRING	40		10			
24	90171110020	BOLT	28		M10X20			
25	90171108018	BOLT	2		M8X18			
26	42201510200	RETAINER	4					
27	42200760400	NUT	8					
28	90171110025	BOLT	8		M10X25			
29	37002009710	PLATE,SLIDE	4					
30	37001004870	SHEAVE ASSY	1					
31	37000136960	PIN	1					
32	37000507400	PLATE	1					
33	37000553000	PLATE	4					
34	90172108025	BOLT,HEXAGON SOCKET	6		M8X25			
35	42200760500	PLATE,SLIDE	1					
36	37002014470	PLATE,SLIDE	4					
37	37000550920	PLATE	24		T=0.8			
39	42202030100	SHEAVE ASSY	1					
40	37000136890	PIN	2					
41	80602110400	RING,RITAINING	4		R40			
42	31200735300	SPACER	2		L=11			
43	42200760700	ROLLER	4					
44	90303070801	WASHER,PLAIN	4		8			
45	90172108012	BOLT,HEXAGON SOCKET	4		M8X12			
46	37000160850	PIN	1					
47	37000306550	SPACER	1		L=18			
48	37001916650	ROPE,WIRE (KOKOKU)	2		12X6.33M			
	37001916640	ROPE,WIRE (TESAC)	2		12X6.33M			
49	42200760900	PLATE	2					
50	80185308020	SCREW,MACHINE	4		M8X20			
51	37000550910	PLATE	2					
52	42201370100	SHEAVE ASSY	1					
53	37000161450	PIN	1					
54	90303071201	WASHER,PLAIN	2		12			
55	80136340025	PIN,SPLIT	2		4X25			
56	37002013730	PLATE,SLIDE	2					
57	37000581730	PLATE	8		T=0.8		HA5732	
	37000581730	PLATE	6		T=0.8	HA5733		
58	80184306012	SCREW,MACHINE	8		M6X12			
59	37000112510	PIN	1					
60	90201481800	NUT	4		M18			
61	90710716600	SCREW,SET	2		M16X60			

AT-120S-2 42081200062 UPPER  
PG5180006-00 GENERATOR ASSY

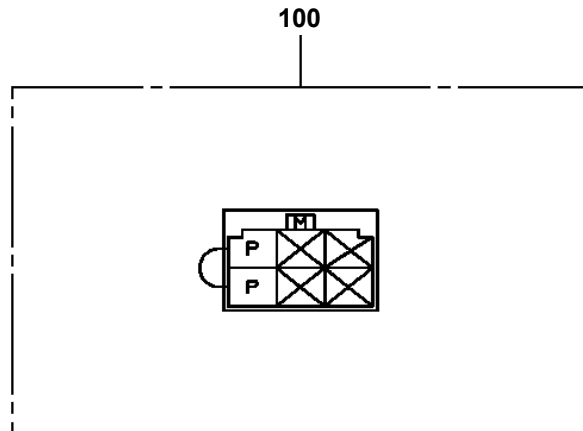
100



AT-120S-2 42081200062 UPPER  
PH5031344-00 HARNESS

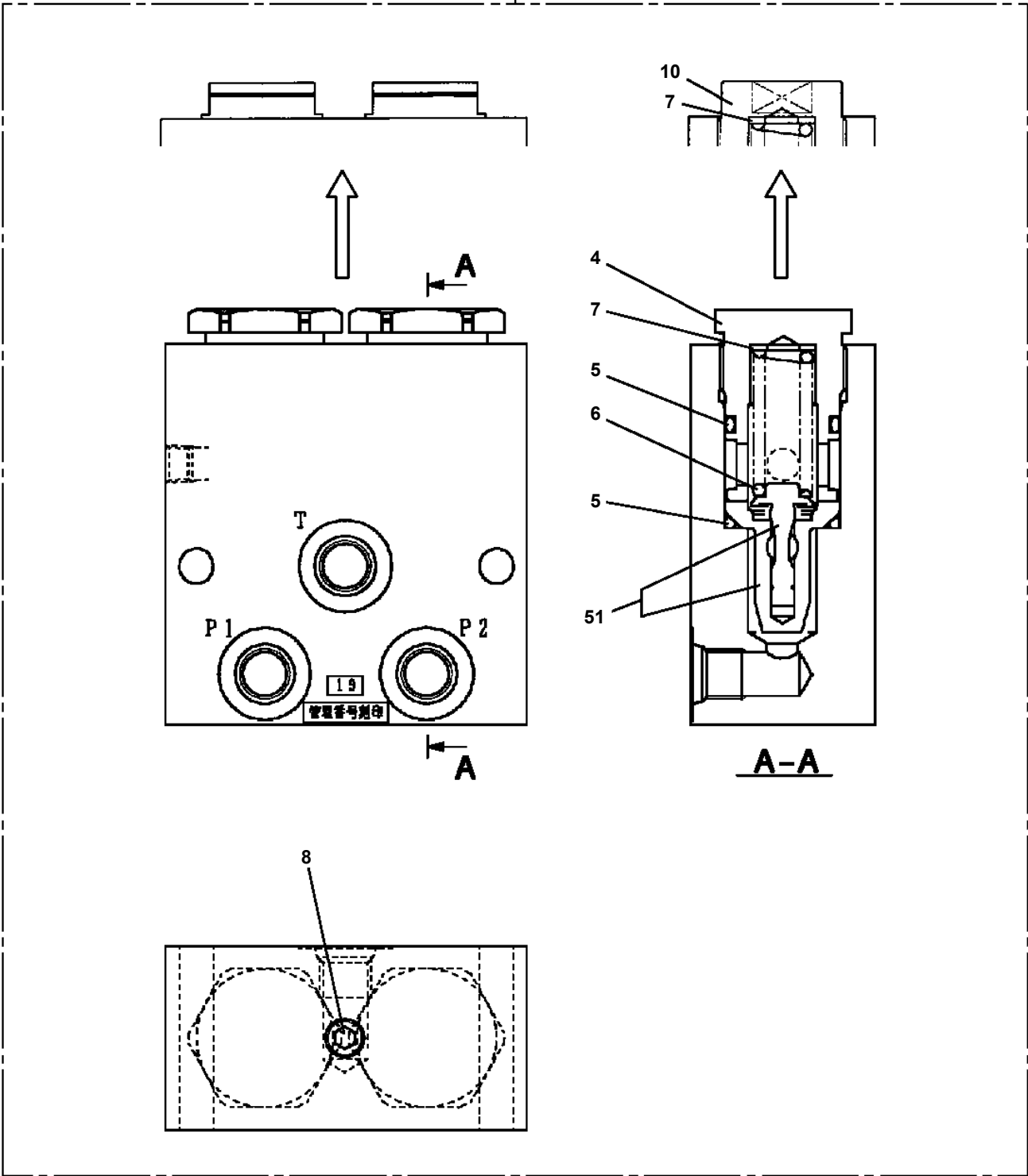


**AT-120S-2 42081200062 UPPER  
PH5034365-00 HARNESS**



AT-120S-2 42081200062 UPPER  
PI1100136-01 VALVE,RELIEF

100



CLICK HERE TO **DOWNLOAD** THE COMPLETE MANUAL

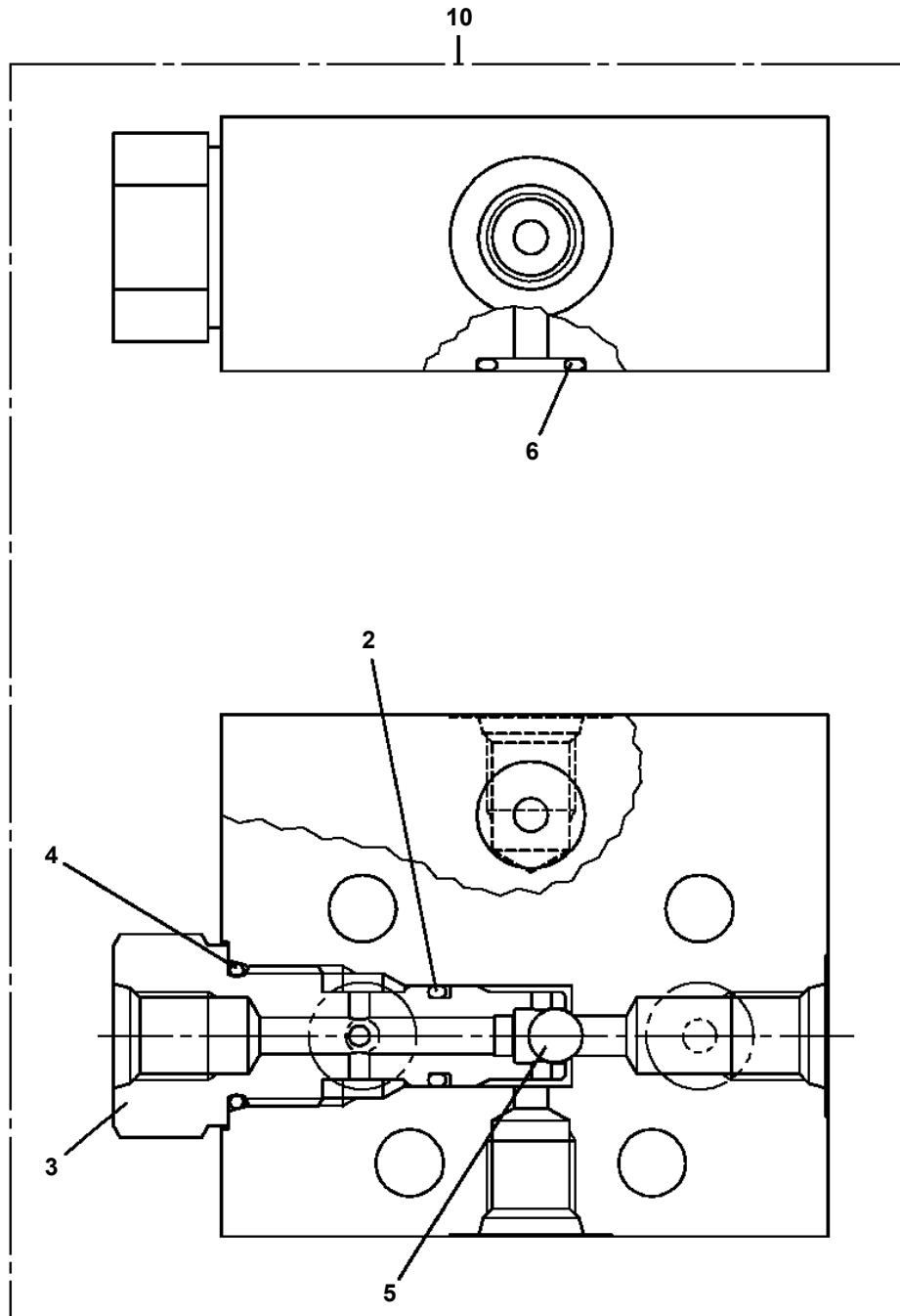
- Thank you very much for reading the preview of the manual.
- You can download the complete manual from: [www.heydownloads.com](http://www.heydownloads.com) by clicking the link below



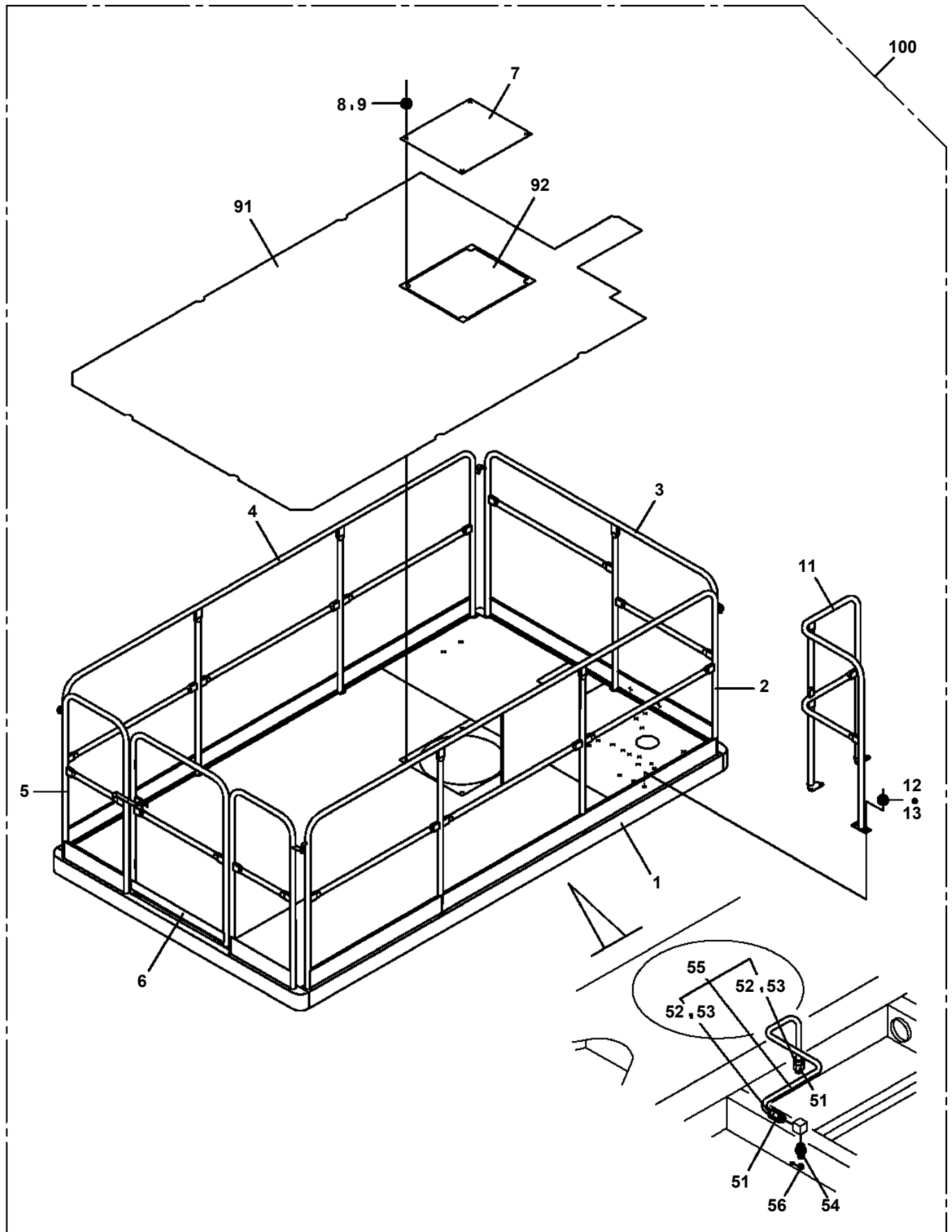
- Please note: If there is no response to CLICKING the link, please download this PDF first and then click on it.

CLICK HERE TO **DOWNLOAD** THE COMPLETE MANUAL

AT-120S-2 42081200062 UPPER  
PI1230018-00 VALVE,SHUTTLE



AT-120S-2 42081200062 UPPER  
PJ3010289-01 PLATFORM



# AT-120S-2 42081200062 UPPER

Pos No.	Parts No	Parts Name	Qty	Unit	Technical Data	Serial No (Start)	Serial No (End)
2	37001504630	BOLT	15		M18X70		
3	37001500240	BOLT	8		M16X50		
4	90171114040	BOLT	4		M14X40		
5	90302041401	WASHER,SPRING	4		14		
6	36080970000	REDUCER,PLATFORM SWING SPEED	1				
7	91001209000	O-RING	1		1A G90		
8	90172112035	BOLT,HEXAGON SOCKET	2		M12X35		
9	90302041201	WASHER,SPRING	2		12		
10	90303501601	WASHER,PLAIN	8		16		
11	36624610000	VALVE,SHUTTLE	1				
12	90101208055	BOLT	4		M8X55		
13	36662490000	MOTOR,HYDRAULIC (PLATFORM)	1				HA5806
	36663190000	MOTOR,OIL	1			HA5807	
14	90302040801	WASHER,SPRING	4		8		
15	37000914090	JOINT	1				
16	37000910830	JOINT	1				
17	90303501808	WASHER,PLAIN	15		16		
31	37002301930	BEARING,SWING (KOYO)	1				
	37002305410	BEARING,SWING (NIPPON ROBALLO)	1				
	37002304560	BEARING,SWING (NIHON MONORACE)	1				

# AT-120S-2 4208120062 UPPER

Pos No.	Parts No	Parts Name	Qty	Unit	Technical Data	Serial No (Start)	Serial No (End)	Remarks
1	42332037581	BOARD,CPU (WITH DATA)	1					
2	42332031160	BOARD,CIRCUIT	1					
3	42332201150	BOARD,CIRCUIT	1					
4	42332207530	COVER	1					
5	42332207540	BOX	1					
6	42332207550	PANEL	1					
7	42332207560	PANEL	1					
8	42332207570	PLATE ASSY (BASE)	1					
9	42332207580	COVER	1					
10	42332207590	PLATE	1					
11	42331227790	PLATE,NAME (FRONT)	1					
13	42331227860	GUARD ASSY (SWITCH)	2					
14	42331227780	PACKING	1					
15	42332207600	PLATE,NAME	1					
16	42332207610	COVER	1					
17	42331597590	PACKING	2					
18	42352737730	LAMP	2					
19	42331597600	DAMPER SET (ROTARY)	1					
20	42331597610	DAMPER SET (ROTARY)	1					
21	44330577610	CATCH (SPRING SET)	1					
22	42332207620	GUARD ASSY	1					
23	44330577590	CAP ASSY	1					
24	42331227650	CATCH SET	1					
25	42331227640	RUBBER ASSY	2					
26	44330577680	INSULATOR (SET)	1					
27	82430725000	KNOB	2					
28	42332207630	JOY STICK,CONTROLLER	1					
29	42332207640	JOY STICK,CONTROLLER	1					
30	42331917540	SWITCH,PUSH	1					
31	44330577700	CONNECTOR	1					
32	42332207520	CAP	9					
33	82105221286	SWITCH,TOGGLE	4					
34	42331227910	SWITCH,TOGGLE	1					
35	82105221254	SWITCH,TOGGLE	1					
36	82105221183	SWITCH,TOGGLE	2					
37	82105221152	SWITCH,TOGGLE	1					
38	42332207650	LAMP ASSY	1					
39	42332207660	SCREW	14					
40	82163351221	LAMP,PILOT	2					
41	42332207670	PACKING	1					
42	42332207680	PACKING	1					
43	42332207690	SCREW	10					
44	42332207700	NUT	9					
45	(*****)	P-ROM	1					
46	(*****)	P-ROM	1					
61	42331227690	BOOT	2					
100	42332201000	BOX,OPERATION	1					

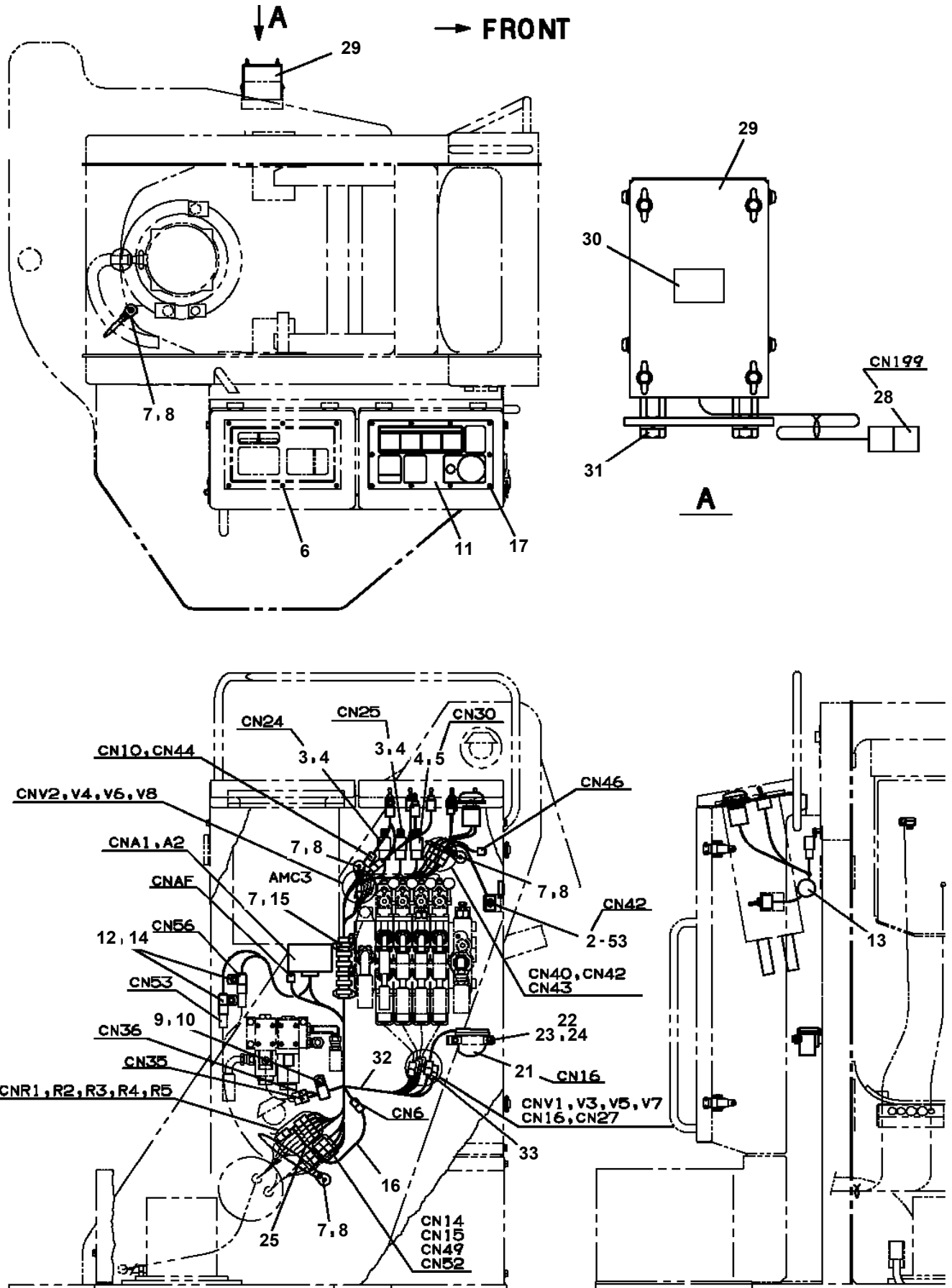
## AT-120S-2 4208120062 UPPER

Pos No.	Parts No	Parts Name	Qty	Unit	Technical Data	Serial No (Start)	Serial No (End)	Remarks	P
1	36662355010	SHAFT	1						
2	80500006205	BEARING,BALL	1						
4	91001004800	O-RING	1		S48				
5	36661915020	HOLDER (OIL SEAL)	1						
6	91252102500	SEAL,OIL	1						
7	36661915030	PLATE (HOLDER)	1						
8	36662255070	RING,RETAINING	1		R52				
9	36662355030	RETAINER	1						
10	36662355040	PLATE (CAM)	1						
11	36660275010	BEARING,THRUST	1						
12	36663985010	PLATE,THRUST	1						
13	36663985020	SPRING	1						
14	36662355071	BARREL,CYLINDER	1						
17	36662355110	PIN	2						
18	91001008500	O-RING	1		S-85				
19	36662355120	PLATE	1						
20	36663985050	BOLT (M8X30)	6						
21	36644115130	PLUG	1						
22	91001101100	O-RING	1		1A P11				
25	12413305020	KEY	1						
26	91001102201	O-RING	1		1A P22A				
28	36663955070	PISTON (LOCK)	1						
29	91001101800	O-RING	1		1A P18				
30	91410001800	RING,BACKUP	1		P18				
31	36663955080	SPRING (LOCK)	1						
32	36663955090	CAP (LOCK)	1						
33	36081315130	PROTECTOR (THREAD)	1						
34	36663195010	SEAL,DUST	1						
53	36662355080	SPRING (PLUNGER)	7						
54	36663985080	BALL,STEEL (15/32)	7						
55	36662355090	SPRING (CENTER)	1						
56	12413305490	RING,RETAINING	1						
100	36663190000	MOTOR,OIL	1						

# AT-120S-2 42081200062 UPPER

Pos No.	Parts No	Parts Name	Qty	Unit	Technical Data	Serial No (Start)	Serial No (End)	Remarks	Pages
1	42500101000	BOX	1						
2	42500071600	COVER	1						
3	80182306014	SCREW,MACHINE	4		M6X14				
4	90302040601	WASHER,SPRING	4		6				
5	91810132530	FASTENER	1						
6	91850400601	CLAMP	1						
7	82400000201	GROMMET	1		KG-016				

**AT-120S-2 42081200062 UPPER  
PN1014154-00 ELEC.ASSY (SWING FRAME)**



# AT-120S-2 42081200062 UPPER

Pos No.	Parts No	Parts Name	Qty	Unit	Technical Data	Serial No (Start)	Serial No (End)
1	36132010000	DETECTOR,BOOM LENGTH	1				
2	90186206014	BOLT,FLANGE	4		M6X14		HA5819
	90101206016	BOLT	6		M6X16	HA5820	
3	90186206020	BOLT,FLANGE	2		M6X20		HA5819
4	90280200600	NUT,FLANGE	16		M6		HA5819
	90280200600	NUT,FLANGE	10		M6	HA5820	
5	36140520000	DETECTOR,ANGLE	1				HA5819
6	90186208010	BOLT,FLANGE	8		M8X10		
7	82100002037	CLAMP	1		WE10		HA6392
	82100002037	CLAMP	2		WE10	HA6393	HA6796
8	42354862400	SUPPORT	1				
9	80175304010	SCREW,MACHINE	1		M4X10		
10	42354862100	CABLE	1		L=3800		
11	42360030060	WASHER	1				
13	42433521000	ROLLER ASSY	1				
14	82100002006	CLAMP	5		WR10		HA6392
	82100002006	CLAMP	4		WR10	HA6393	HA6549
	82100002006	CLAMP	1		WR10	HA6550	HA6796
15	82100002012	CLAMP	3		WR18		HA6796
	82100002012	CLAMP	2		WR18	HA6797	
16	42354862300	COVER	1				
17	91810130230	FASTENER	3				
19	82100002010	CLAMP	1		WR15		
20	90186208020	BOLT,FLANGE	2		M8X20		
22	42354582100	SUPPORT	1				
23	42352852500	ROLLER ASSY	1				
24	42354862500	COVER	1				
25	90302040601	WASHER,SPRING	6		6	HA5820	
26	90201200600	NUT	6		M6	HA5820	
27	82100002005	CLAMP	1		WRC8	HA5820	
28	37000526010	PLATE	1			HA5843	
29	82100002004	CLAMP	3		WR8	HA6550	
30	82400000204	GROMMET	1		L=320	HA6550	
31	82100002008	CLAMP	1		WR12	HA6797	
32	82100002014	CLAMP	3		WR20	HA6797	
35	36140680000	DETECTOR,ANGLE (ASSY ONLY)	1			HA5820	HA6809
	36140760000	DETECTOR ASSY,ANGLE (ASSY ONLY)	1			HA6810	
41	42433521100	SUPPORT	1				
42	37001102350	ROLLER	1				
43	37000302060	SPACER	1		L=11.2		
44	90303071001	WASHER,PLAIN	1		10		
45	90201201000	NUT	1		M10		
46	90302041001	WASHER,SPRING	1		10		
61	42352852600	SUPPORT	1				
62	37001004170	SHEAVE ASSY	2				
63	37000540570	PLATE	2				
64	90101206012	BOLT	2		M6X12		
65	90302040801	WASHER,SPRING	2		8		
72	80516006002	BEARING,BALL	2				
73	80602110320	RING,RITAINING	2		R32		

# AT-120S-2 42081200062 UPPER

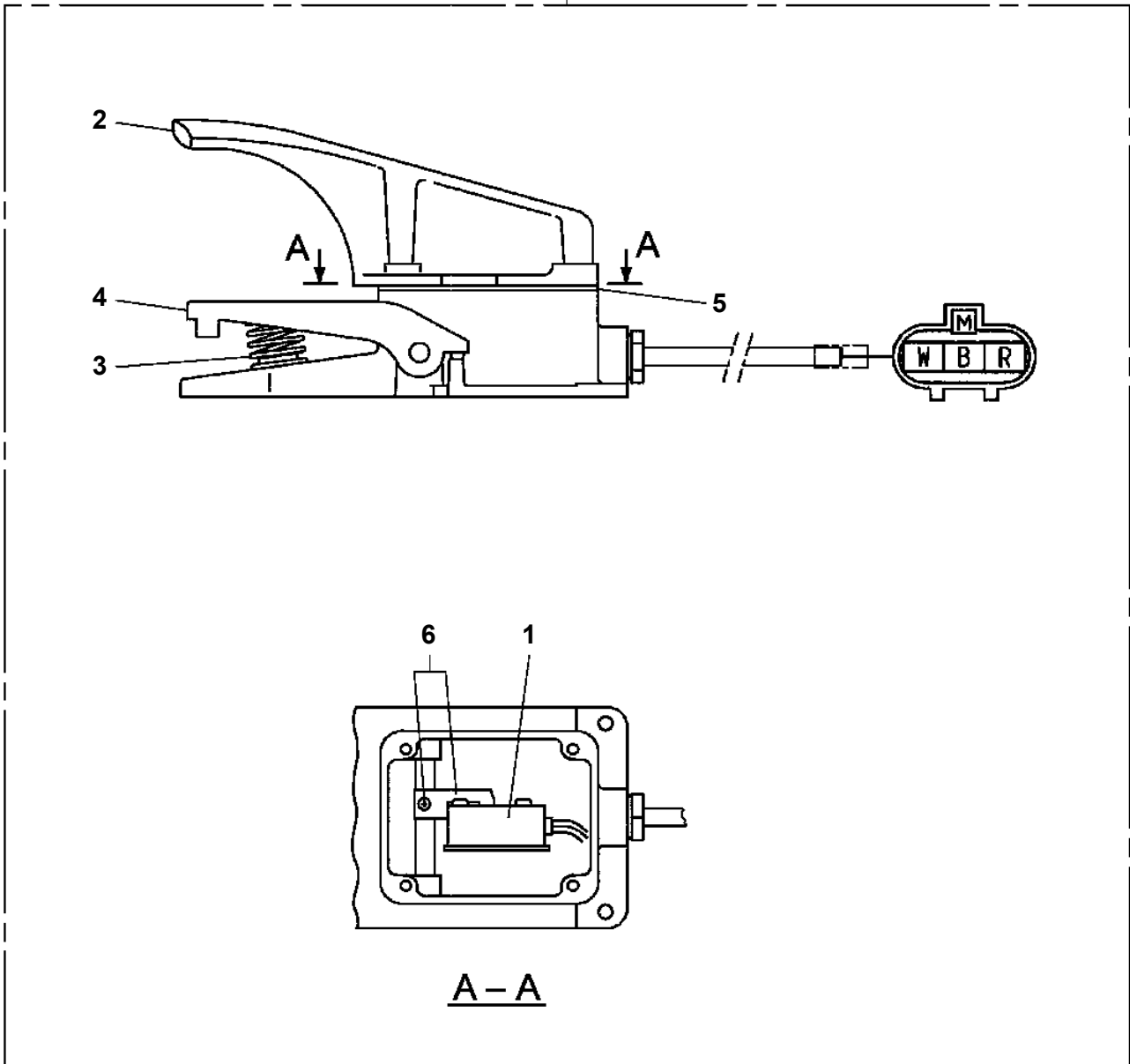
Pos No.	Parts No	Parts Name	Qty	Unit	Technical Data	Serial No (Start)	Serial No (End)	Re
1	82199444326	LAMP (YELLOW) <24V 12W)	4				HA5726	
2	42737850100	GUARD	4				HA5808	
3	42736070100	SWITCH ASSY (WITH HARNESS)	1					
4	42739790010	PLATE,NAME	1					
5	90186206016	BOLT,FLANGE	16		M6X16		HA5726	
	90186206030	BOLT,FLANGE	16		M6X30	HA5727	HA5808	
	90186206030	BOLT,FLANGE	8		M6X30	HA5809		
6	42739790020	HARNESS	1					
7	80181306014	SCREW,MACHINE	1		M6X14		HA5726	
	80181306014	SCREW,MACHINE	2		M6X14	HA5727		
8	82197518114	CAP (MATSUSHITA/BLACK)	1				HA5752	
	82197518119	CAP (PLUS ONE MFG./BLACK)	1				HA5752	
9	90280200600	NUT,FLANGE	16		M6		HA5808	
	90280200600	NUT,FLANGE	8		M6	HA5809		
10	42739300100	SUPPORT	2					
11	90302040601	WASHER,SPRING	2		6	HA5727		
12	82100001801	TUBE,CORRUGATE	1	M	7	HA5727		
13	42502980100	SUPPORT	4			HA5727	HA5808	
14	82199444329	LAMP (YELLOW)	4		24V 12W	HA5727		
15	37000306130	SPACER	8		L=8	HA5727	HA5808	
16	37000302980	SPACER	8		L=10	HA5727	HA5808	
17	82199504017	NUT	1		AT-401N	HA5753		
28	82199514013	CAP	1			HA5753		
29	42505221100	GUARD (STEEL CAST)	4			HA5809		
	42505221200	GUARD	4			HA5809		
51	82166136411	BULB,LAMP	4		24V/12W		HA5726	
61	82166600010	BULB,LAMP	4		24V/12W	HA5727		

## AT-120S-2 4208120062 UPPER

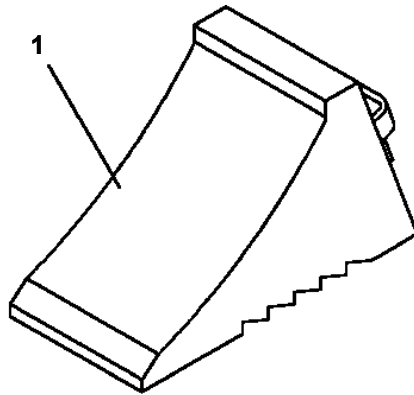
Pos No.	Parts No	Parts Name	Qty	Unit	Technical Data	Serial No (Start)	Serial No (End)	Remarks	Pages
114	42500677565	CIRCUIT ASSY	1						
115	42500677566	BOLT	2						
116	42500677567	ROTOR	1						
117	42500677568	BEARING	1						
118	42500677569	BOLT	1						
119	42500677570	WASHER	1						
120	42500677571	STATOR	1						
201	42500677572	PANEL	1						
202	42500677573	PLATE,NAME	1						
203	42500677574	SCREW	6						
204	42500677575	LAMP (OIL)	1						
205	42500677576	VOLTMETER	1						
206	42500677577	NUT	2						
207	42500677578	HARNESS	1						
208	42500677579	HARNESS	1						
209	42500677580	HARNESS	1						
210	42500677581	HARNESS	1						
211	42500677582	CABLE,CONTROL	1						
214	42500677583	CONTROLLER	1						
215	42500677584	DIAL (KNOB)	1						
216	42500677585	SWITCH	1						
217	42500677586	SOCKET	2						
218	42500677587	SCREW	4						
219	42500677588	WASHER,SPRING	2						
500	42500671000	GENERATOR	1						

AT-120S-2 42081200062 UPPER  
PS5530449-00 SWITCH ASSY

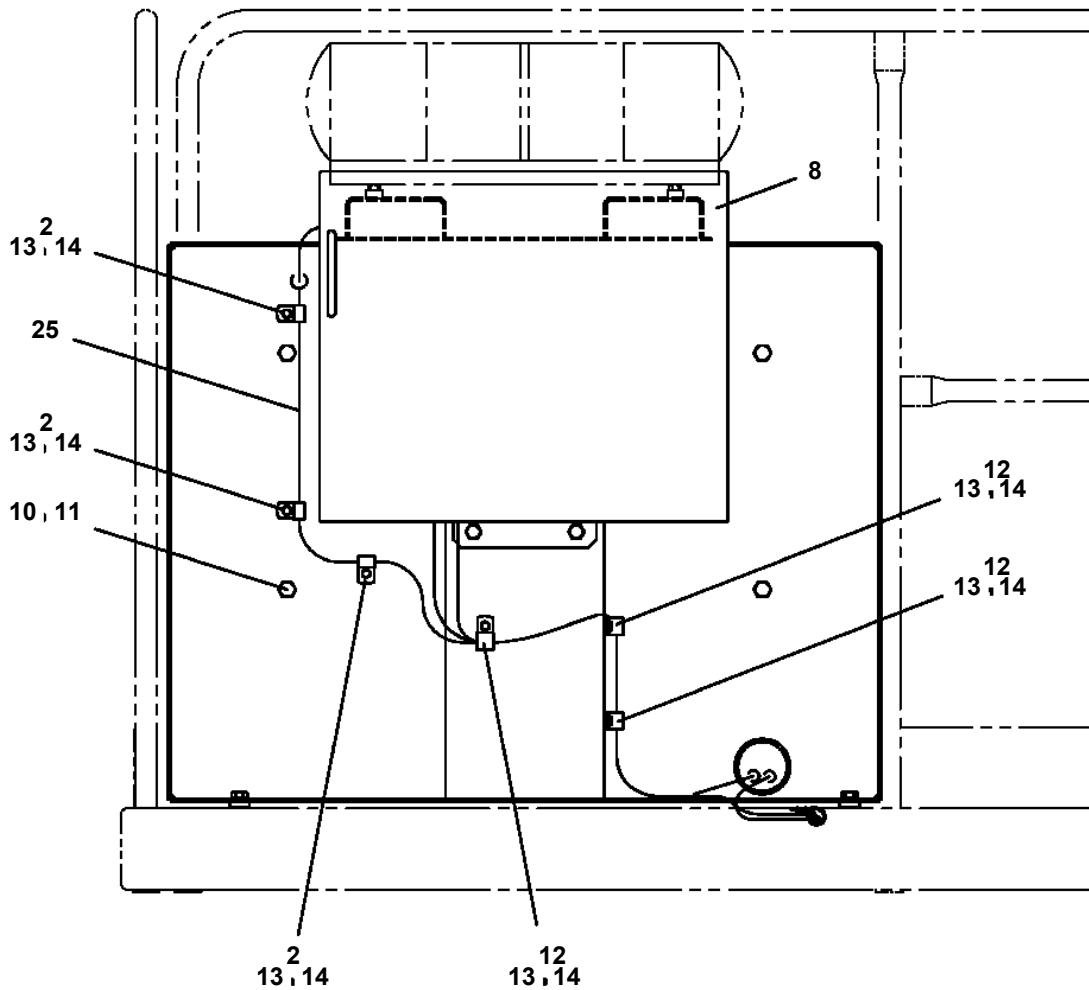
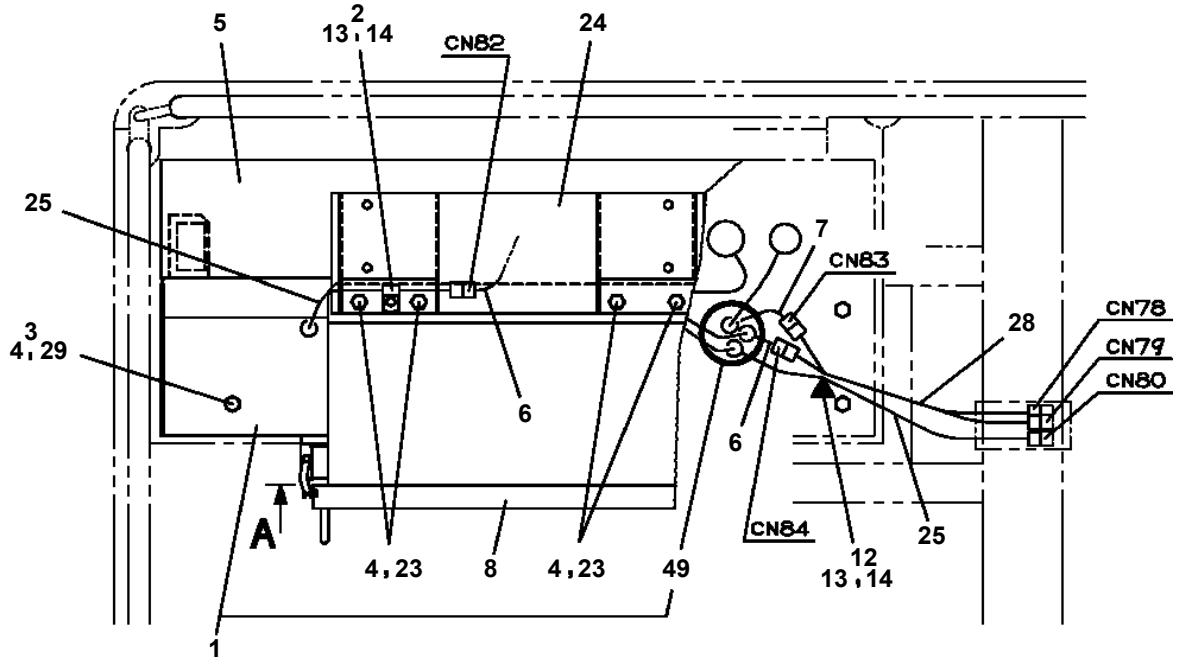
100



**AT-120S-2 42081200062 UPPER  
PW5110002-00 WEDGE (STOPPER FOR TIRE/WAZUMI)**



AT-120S-2 42081200062 UPPER  
 PX1940207-01 MOUNT (PLATE/LED)



展開圖有  
 ILLUSTRATED BREAKDOWN NO. 8

CLICK HERE TO **DOWNLOAD** THE COMPLETE MANUAL

- Thank you very much for reading the preview of the manual.
- You can download the complete manual from: [www.heydownloads.com](http://www.heydownloads.com) by clicking the link below



- Please note: If there is no response to CLICKING the link, please download this PDF first and then click on it.

CLICK HERE TO **DOWNLOAD** THE COMPLETE MANUAL