

AT-110-1 42084100080 UPPER

PD2000097-00 SWING UNIT

PG2000109-00 BOOM UNIT

PH1000505-00 SAFETY DEVICES

PJ3000353-01 BUCKET SYSTEM

PK2000399-00 FRAME UNIT

PO1000123-00 INDICATION PLATES

PW1000041-00 ACCESSORIES & TOOLS

PY1000829-04 OPTIONS,1

PY2000023-04 OPTIONS,2

ASSEMBLY

CLICK HERE TO **DOWNLOAD** THE COMPLETE MANUAL

- Thank you very much for reading the preview of the manual.
- You can download the complete manual from: www.heydownloads.com by clicking the link below



- Please note: If there is no response to CLICKING the link, please download this PDF first and then click on it.

CLICK HERE TO **DOWNLOAD** THE COMPLETE MANUAL

AT-110-1 42084100080 UPPER

Pos No.	Parts No	Parts Name	Qty	Unit	Technical Data	Serial No (Start)	Serial No (End)	Remarks
1	(*****)	FRAME	1					
2	(*****)	OUTRIGGER	1					
3	(*****)	OPE.ASSY,CONT.VALVE	1					
4	(*****)	PIPING,OUTRIGGER	1					
5	(*****)	ELEC.ASSY (FRAME)	1					
6	(*****)	BOOM REST INSTALLATION	1					
7	(*****)	TANK SUPPORT	1					

AT-110-1 42084100080 UPPER

PB1130208-02 TANK,OIL
PB1300376-00 JOINT,ROTARY (MOUNT)
PB1300377-00 JOINT,ROTARY
PB1300421-00 JOINT,ROTARY (MOUNT)
PB1300422-00 JOINT,ROTARY
PB1310033-00 BRUSH,ROTARY JOINT
PB1310045-00 BRUSH,ROTARY JOINT
PB1320319-00 VALVE,MANUAL CONTROL
PB1340053-00 VALVE,SOLENOID CONTROL
PB1380163-02 POWER SUPPLY
PB1380217-00 POWER SUPPLY (HYDRAULIC OUTLET)
PB1380218-00 POWER SUPPLY (UPPER 100V /WITH EARTHING)
PB1380219-00 POWER SUPPLY (100V/WITHOUT EARTHING)
PB1380220-00 POWER SUPPLY (UPPER 100V/1.5KW)
PB1400351-04 PIPING,UPPER
PB5230001-01 BOOSTER ASSY
PC1010802-03 OUTRIGGER
PC1030305-01 CYLINDER,JACK
PC1030306-01 CYLINDER,JACK (FRONT)
PC1200419-03 PIPING,OUTRIGGER
PC5020027-00 CABLE ASSY
PD1010133-00 REDUCER,SWING SPEED
PD1010153-00 REDUCER,SWING SPEED (MOUNT)
PD1010172-00 REDUCER,SWING SPEED
PE1010402-01 CYLINDER,ELEVATING
PE1050120-02 CYLINDER,LEVELING (UPPER)
PE1050121-00 CYLINDER,LEVELING (LOWER)
PE5010004-01 EARTH ASSY
PG1010756-06 BOOM
PG1010824-02 BOOM
PG1050454-01 CYLINDER,TELESCOPING
PG1050537-00 CYLINDER,TELESCOPING
PG1120174-00 DETECTOR,BOOM LENGTH
PG1220079-03 PIPING,BOOM
PG1220118-02 PIPING,BOOM
PH1480043-00 MOTION CONTROLLER (AMC)
PH1480044-00 MOTION CONTROLLER (AMC)
PH1480044-00 MOTION CONTROLLER (AMC)
PH1540028-03 FOOT SWITCH (OPTION)
PH5030047-00 HARNESS
PH5030048-00 HARNESS
PH5030049-00 HARNESS
PH5030976-00 HARNESS
PH5031640-00 HARNESS
PH5031646-00 HARNESS
PH5031648-00 HARNESS
PH5032076-00 HARNESS
PH5032077-00 HARNESS
PH5032079-00 HARNESS
PH5032080-00 HARNESS
PH5032085-00 HARNESS
PH5032134-00 HARNESS
PH5032139-00 HARNESS
PH5032146-00 HARNESS
PH5032149-00 HARNESS
PH5032157-00 HARNESS
PH5032158-00 HARNESS
PH5032166-00 HARNESS
PH5032167-00 HARNESS
PH5032169-00 HARNESS
PH5032170-00 HARNESS
PH5032171-00 HARNESS
PH5032176-00 HARNESS
PH5032178-00 HARNESS

AT-110-1 42084100080 UPPER

Pos No.	Parts No	Parts Name	Qty	Unit	Technical Data	Serial No (Start)	Serial No (End)	Remarks
2	90101208025	BOLT	3		M8X25			
3	90302040801	WASHER,SPRING	3		8			
4	42441873000	BRUSH,ROTARY JOINT	1					
5	37002461460	HOSE	1		L=850			
6	37002447140	HOSE	2		L=1250			
7	37002444650	HOSE	2		L=950			
8	91002801100	O-RING	1		1B P11			
9	91002801400	O-RING	6		1B P14			
10	42433330020	PLUG (2 POLES,FEMALE)	1					
11	37002449150	HOSE	2		L=1400			
31	42441872100	BODY	1					
32	42441952200	CORE	1					
33	42441672100	PLATE	1					
34	42630461400	FLANGE	1					
35	90172108016	BOLT,HEXAGON SOCKET	6		M8X16			
36	91531208000	PACKING	2					
37	91100308000	RING,SEAL	7					
38	80720105020	PIN,SPRING	1		5X20			
39	80316090040	PLUG SOCKET	2		R1/4			
100	42442321000	JOINT,ROTARY	1					

AT-110-1 42084100080 UPPER

Pos No.	Parts No	Parts Name	Qty	Unit	Technical Data	Serial No (Start)	Serial No (End)	Remarks
1	90101208016	BOLT	2		M8X16			
2	90302040801	WASHER,SPRING	2		8			
3	36630910060	NEEDLE	1					
4	36630910030	HOLDER	1					
5	91002801000	O-RING	1		1B P10			
6	91410001000	RING,BACKUP	1		P10			
8	36630910050	POPPET	1					
9	52255101000	SPRING	1					
10	91002801400	O-RING	1		1B P14			
11	36620030050	PLUG	1					
12	82400000350	KNOB	1					
13	37000508510	PLATE	1					
14	80172303006	SCREW,MACHINE	1		M3X6			
100	36636340000	VALVE,MANUAL CONTROL	1					

AT-110-1 42084100080 UPPER

Pos No.	Parts No	Parts Name	Qty	Unit	Technical Data	Serial No (Start)	Serial No (End)
1	(*****)	ELECTRICAL PARTS,POWER SUPPLY(100V)	1				
2	(*****)	ELEC.ASSY (100V 2 POLES/LOWER)	1				

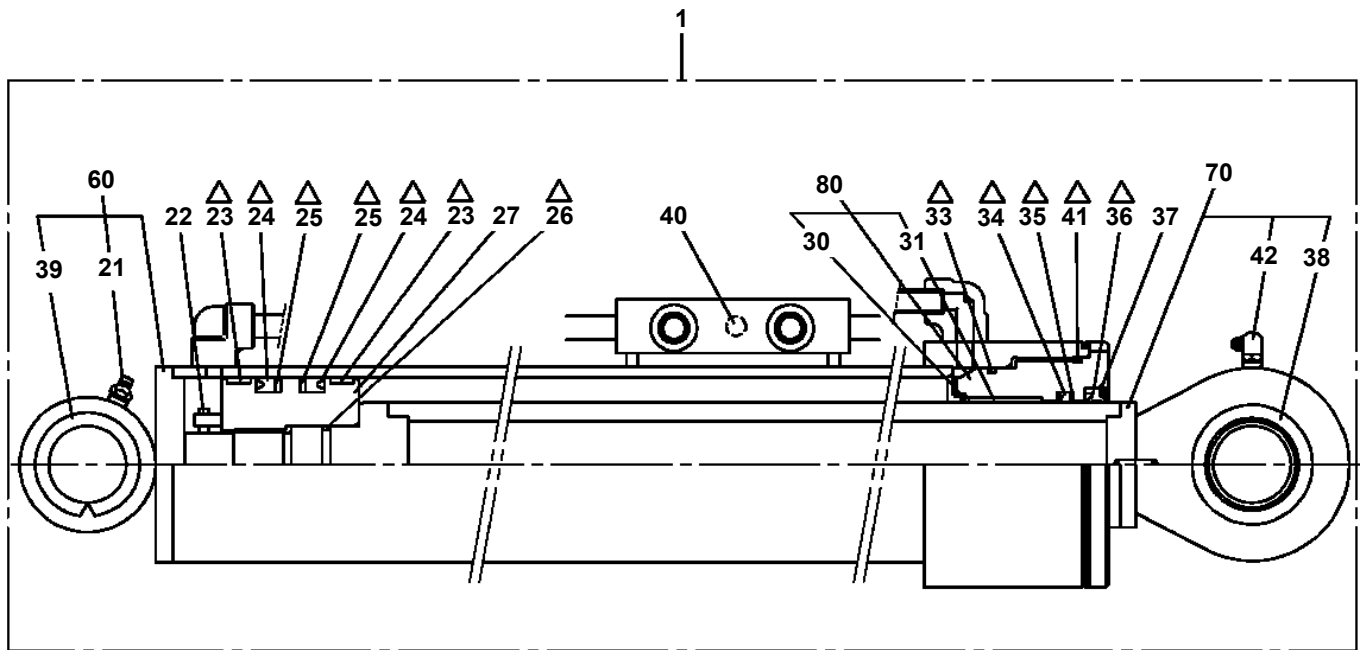
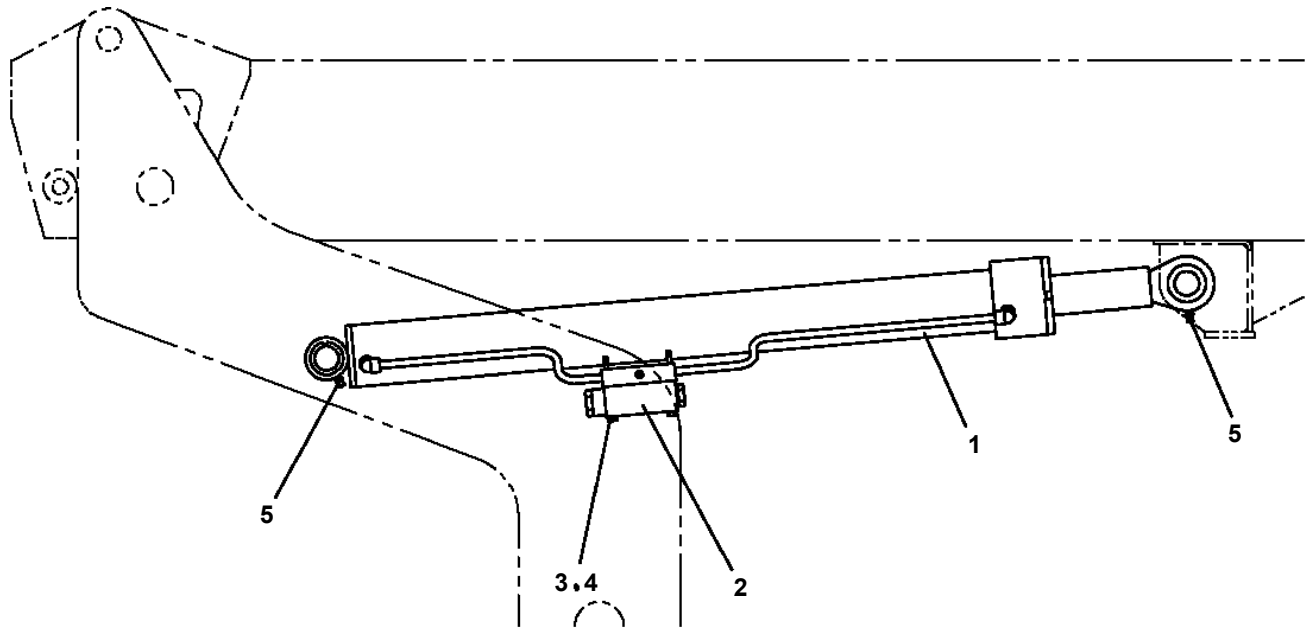
AT-110-1 42084100080 UPPER

Pos No.	Parts No	Parts Name	Qty	Unit	Technical Data	Serial No (Start)	Serial No (End)
137	80481102030	JOINT	2		L G1/4-G3/8		
138	37000925690	JOINT	2				
139	91002801400	O-RING	2		1B P14		
140	91002801100	O-RING	11		1B P11		
152	80560057000	BALL,STEEL	1		1/4		
153	36052132020	SEAT,SPRING	1				
154	12235104020	SPRING	1				
155	80316090020	PLUG	1		KKT PT1/8		
156	80316090010	PLUG	10		KKT PT1/16		HK0542
	36053842040	PLUG	10			HK0543	
157	36052132040	ORIFICE	1		1/16		
171	36642710001	VALVE,SOLENOID	1				

AT-110-1 4208410080 UPPER

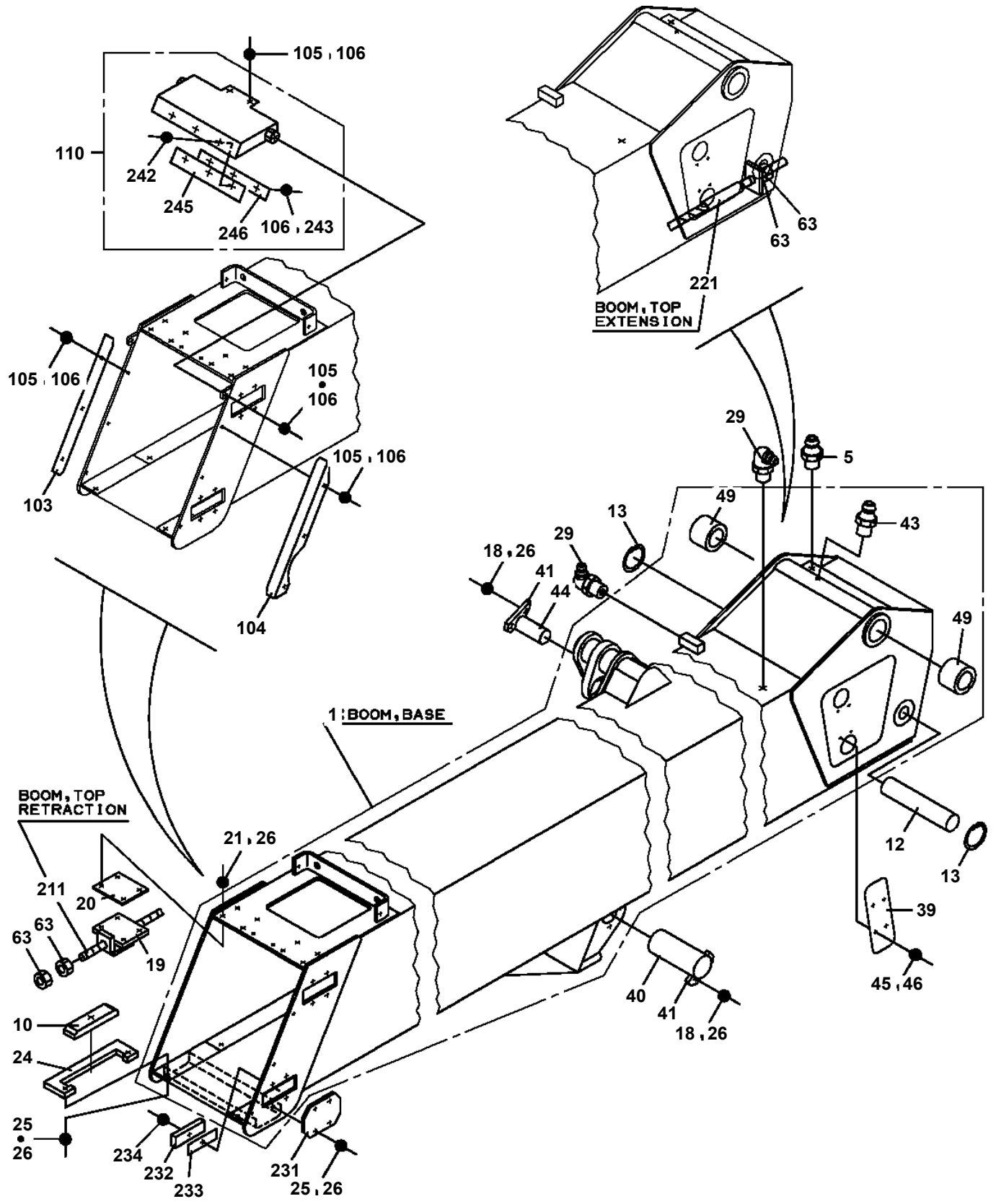
Pos No.	Parts No	Parts Name	Qty	Unit	Technical Data	Serial No (Start)	Serial No (End)	Remarks	Pa
1	37000714020	CLAMP ASSY	6		12X2				
2	80400160127	JOINT	2						
3	91002801100	O-RING	8		1B P11				
4	37002470220	HOSE	2		L=2710				
5	37002470230	HOSE	1		L=1180				
6	91810130240	FASTENER	10						
7	37000714210	CLAMP ASSY	2		12X4				
8	80303130161	FITTING,ELBOW	2		KLO12-030E				
9	37000711080	CLAMP ASSY	8		12-2				
10	81408000160	PIPE,STEEL	2	M	12X1.4T				
11	81408000160	PIPE,STEEL	2	M	12X1.4T				
12	37002470240	HOSE	1		L=1750				
13	37002470250	HOSE	1		L=1710				
14	37000601600	CLAMP	2		WR54				
15	90101208020	BOLT	3		M8X20				
16	90302040801	WASHER,SPRING	4		8				
17	81408000241	PIPE,STEEL	1	M	18X1.9T		217518		
	37002479970	HOSE	1		L=655	217519	217538		
	37002417470	HOSE	1		L=630	217539	217979		
	37002475100	HOSE	1		L=735	217980			
18	81408000241	PIPE,STEEL	1	M	18X1.9T				
20	81408000210	PIPE,STEEL	1	M	15X2.0T				
24	81408000160	PIPE,STEEL	1	M	12X1.4T				
25	81408000160	PIPE,STEEL	1	M	12X1.4T				
26	81408000160	PIPE,STEEL	1	M	12X1.4T				
27	81408000160	PIPE,STEEL	1	M	12X1.4T				
28	81408000210	PIPE,STEEL	1	M	15X2.0T				
29	90201200800	NUT	2		M8				
30	82100002015	CLAMP	1		WRC20				
31	80301010100	FITTING	6		KUA12-000N				
32	81408000160	PIPE,STEEL	2	M	12X1.4T				
33	81408000160	PIPE,STEEL	2	M	12X1.4T				
34	80309010105	SLEEVE	4		KK012-000E				
35	80306010105	NUT	4		KKN12-000E				
36	37002465460	HOSE	4		L=420				
37	37000924960	JOINT (WITH O-RING)	2						
38	81408000210	PIPE,STEEL	1	M	15X2.0T				
40	81408000160	PIPE,STEEL	1	M	12X1.4T				
41	81408000160	PIPE,STEEL	1	M	12X1.4T				
42	81408000160	PIPE,STEEL	1	M	12X1.4T				
43	81408000160	PIPE,STEEL	1		12X1.4T				
44	80481302025	JOINT	2		L,G1/4-G1/4				
45	37000924410	JOINT	2		PF1/4-PF1/4				
46	42645290500	ORIFICE	4		1.6				
48	82100001413	TUBE,SPIRAL	1	M	SE-15BK	217885			
62	80302090241	FITTING	2		KCO18-040N		217518		
	80302090241	FITTING	1		KCO18-040N		217979		
63	91002801800	O-RING	1		1B P18				
	91002801800	O-RING	3		1B P18		217979		
	91002801800	O-RING	5		1B P18	217980			
64	80302090201	FITTING	1		KCO15-040N				
71	91002801100	O-RING	3		1B P11				
	91002801100	O-RING	1		1B P11	217980			
81	42645290310	JOINT	1						
82	80430620600	JOINT (WITH O-RING)	2		L,G3/8-G3/8				
85	80400160129	JOINT	1						
86	91002801400	O-RING	5		1B P14				
91	42645290610	JOINT	1						
95	80400160127	JOINT	1				217518		
	80471020502	JOINT	1			217519	217979		
97	80400160131	JOINT	2			217519	217979		
107	80400160181	JOINT (WITH O-RING)	1			217980			
108	80430620400	JOINT	1			217980			

**AT-110-1 42084100080 UPPER
PE1010402-01 CYLINDER,ELEVATING**



△:PACKING SET KEY NO.90 (KEY NO.23,24,25,26,33,34,35,36,41)

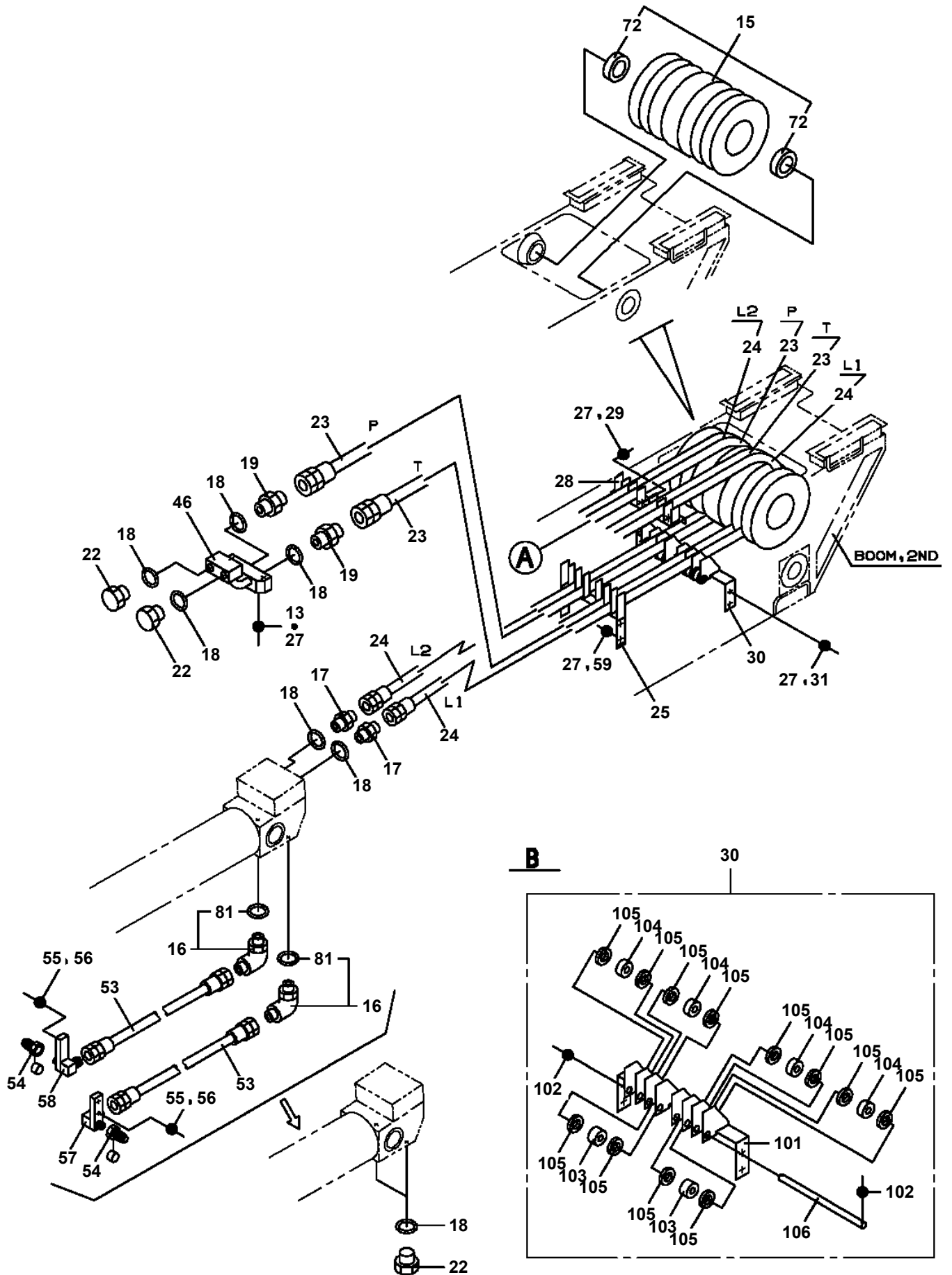
**AT-110-1 42084100080 UPPER
PG1010756-06 BOOM**



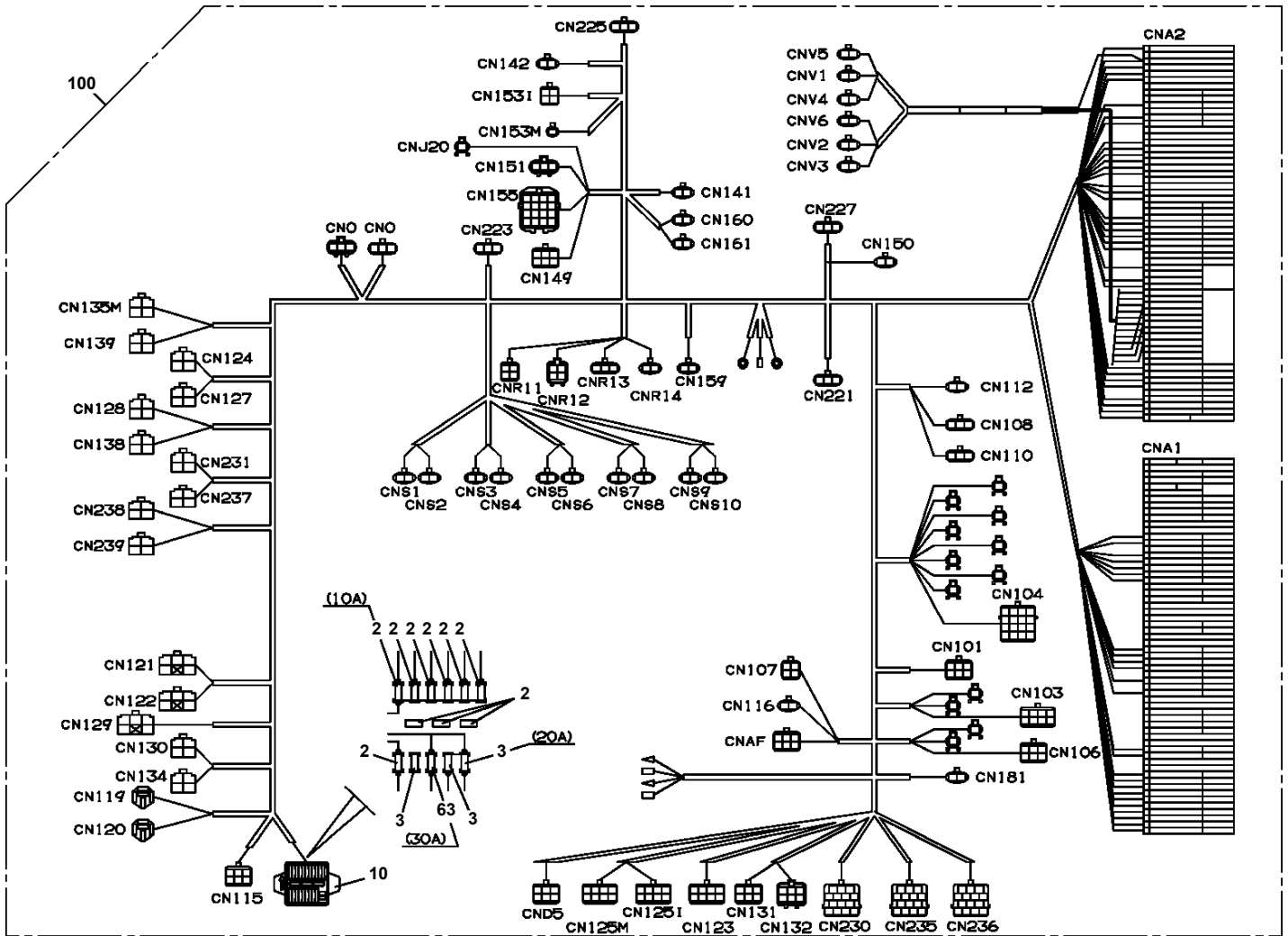
AT-110-1 4208410080 UPPER

Pos No.	Parts No	Parts Name	Qty	Unit	Technical Data	Serial No (Start)	Serial No (End)	Re
1	36017160000	CYLINDER,TELESCOPING	1					
2	36624950000	VALVE,CHECK	1					
3	90172108090	BOLT,HEXAGON SOCKET	3		M8X90			
4	36604630000	VALVE,COUNTERBALANCE	1					
5	90201201200	NUT	6		M12			
6	90171212080	BOLT	2		M12X80			
7	90303071201	WASHER,PLAIN	4		12			
21	91660004001	SEAL,DUST	1					
22	91410204001	RING,BACKUP	1				219250	
23	91694004000	PACKING	1					
24	91002905500	O-RING	1		1B G55			
26	36017161000	ROD	1					
27	36017162000	CYLINDER	1					
28	91002902500	O-RING	1		1B G25			
29	80801004025	BEARING,PLAIN	1					
30	80612110450	RING,RITAINING	1		AR45			
31	90302042701	WASHER,SPRING	1		27			
32	90209202700	NUT	1		M27X2			
33	37000114640	PIN	1					
34	37001101960	ROLLER ASSY (WITH BEARING)	1					
35	37000305260	SPACER	2		L=3			
36	80601110150	RING,RITAINING	2		15			
37	91302206000	BEARING,PLAIN	2					
38	91684006000	PACKING	2					
39	36012720101	PISTON	1				219250	
40	91411205001	RING,BACKUP	2				219250	
41	91002906500	O-RING	1		1B G65			
42	36013010200	PLATE	1					
60	36017169510	COVER,ROD	1				219250	
70	36017169900	PACKING SET	1		40X60		219250	

AT-110-1 42084100080 UPPER
PG1220118-02 PIPING,BOOM

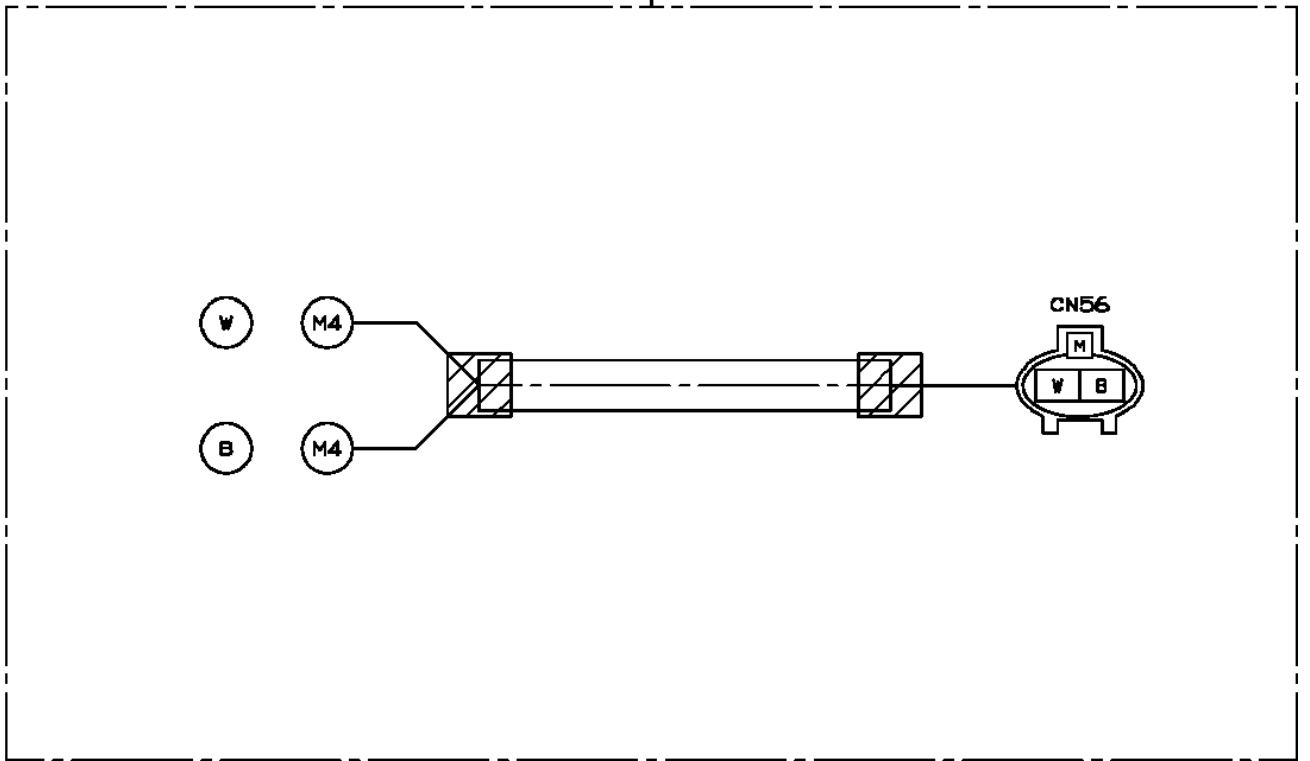


**AT-110-1 42084100080 UPPER
PH5030047-00 HARNESS**

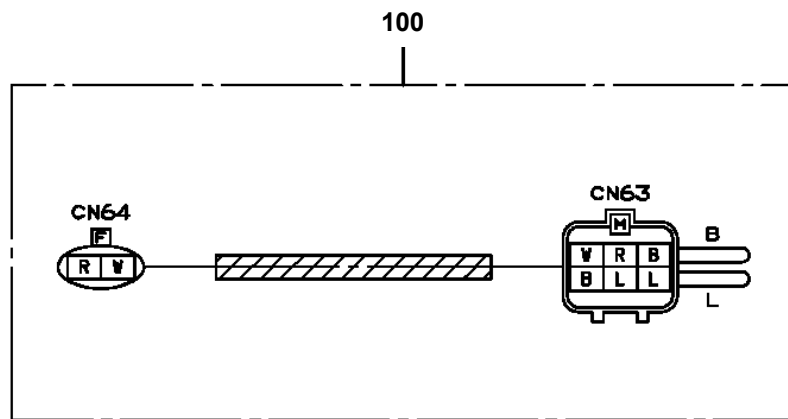


AT-110-1 42084100080 UPPER
PH5031646-00 HARNESS

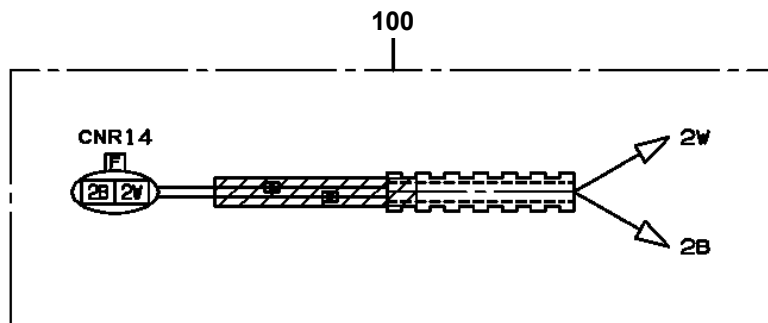
100



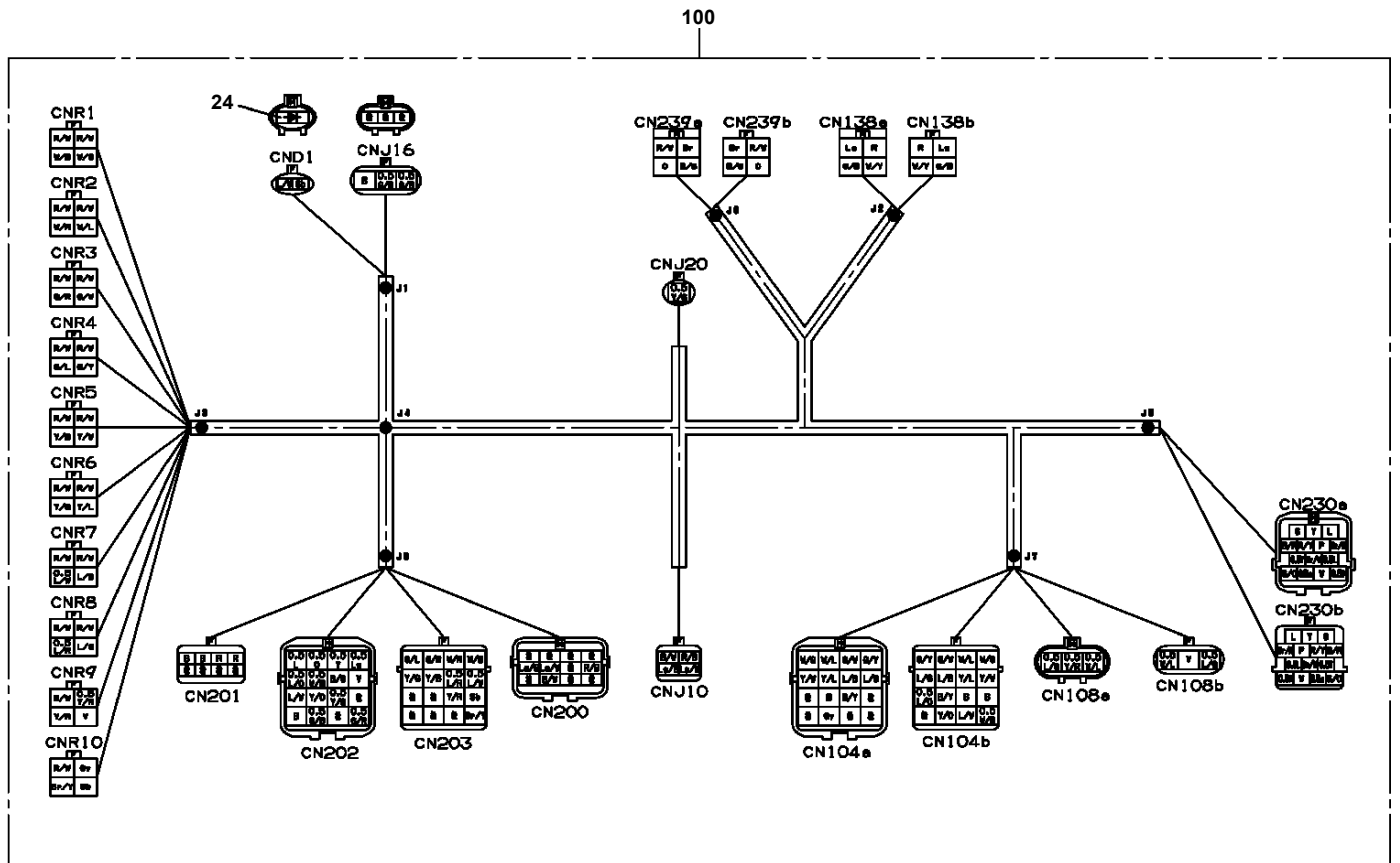
AT-110-1 42084100080 UPPER
PH5032080-00 HARNESS



AT-110-1 42084100080 UPPER
PH5032149-00 HARNESS

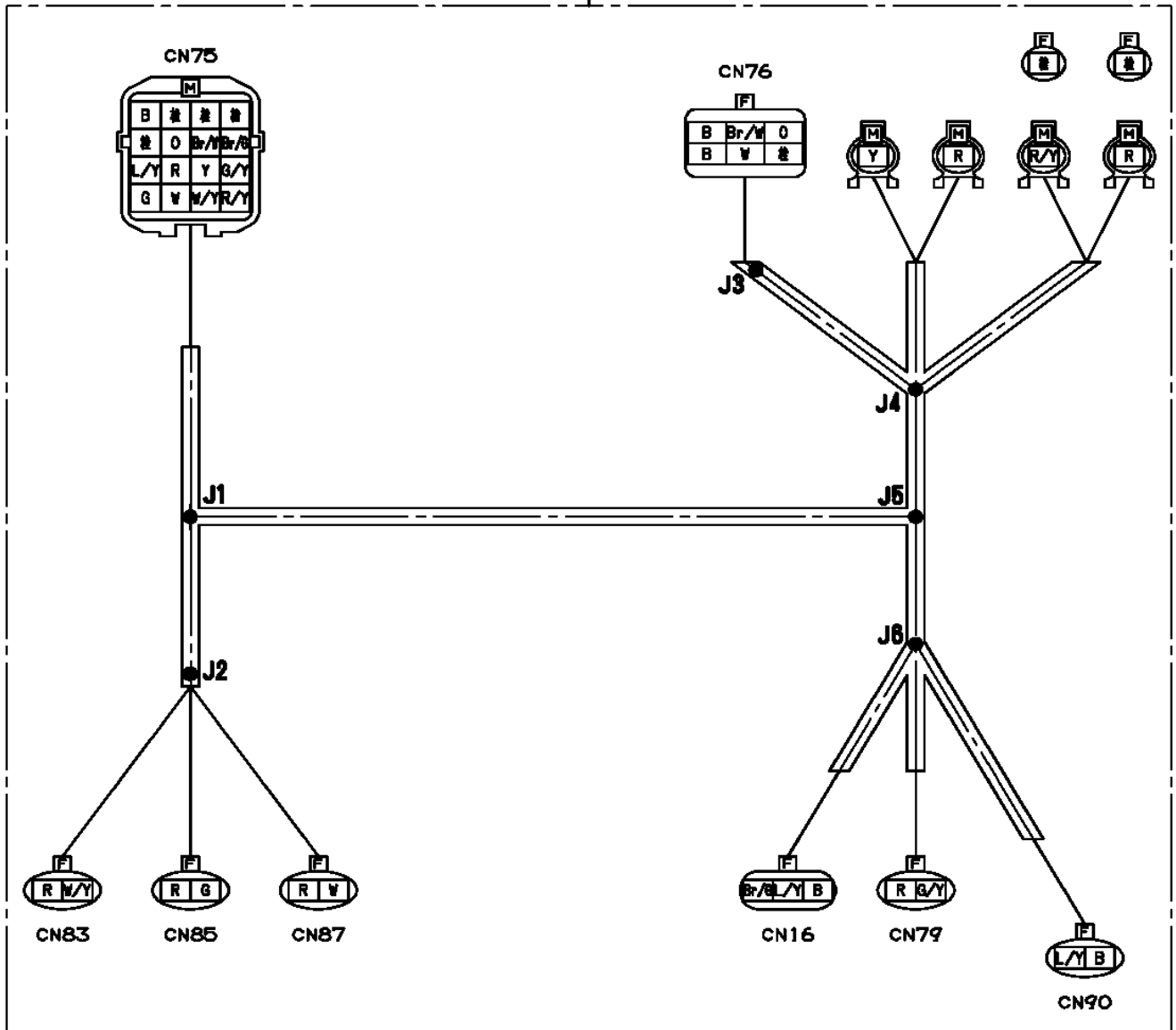


AT-110-1 42084100080 UPPER PH5032169-00 HARNESS

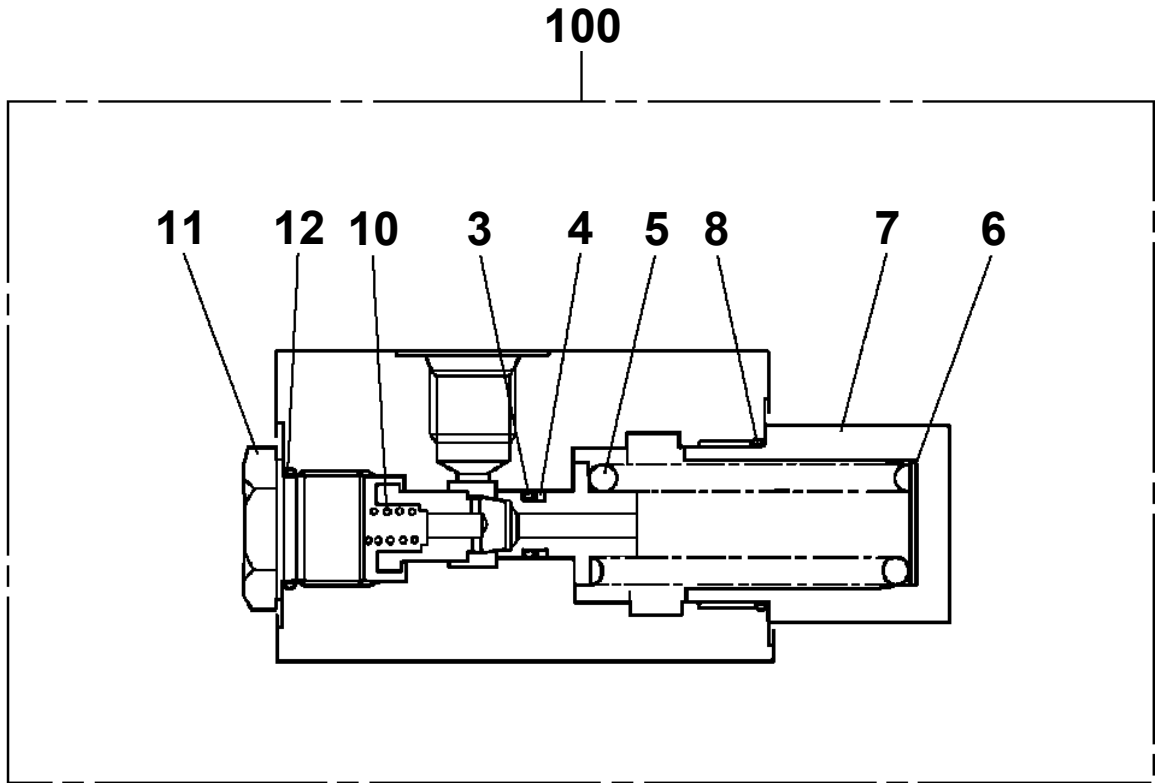


AT-110-1 42084100080 UPPER
PH5032179-00 HARNESS

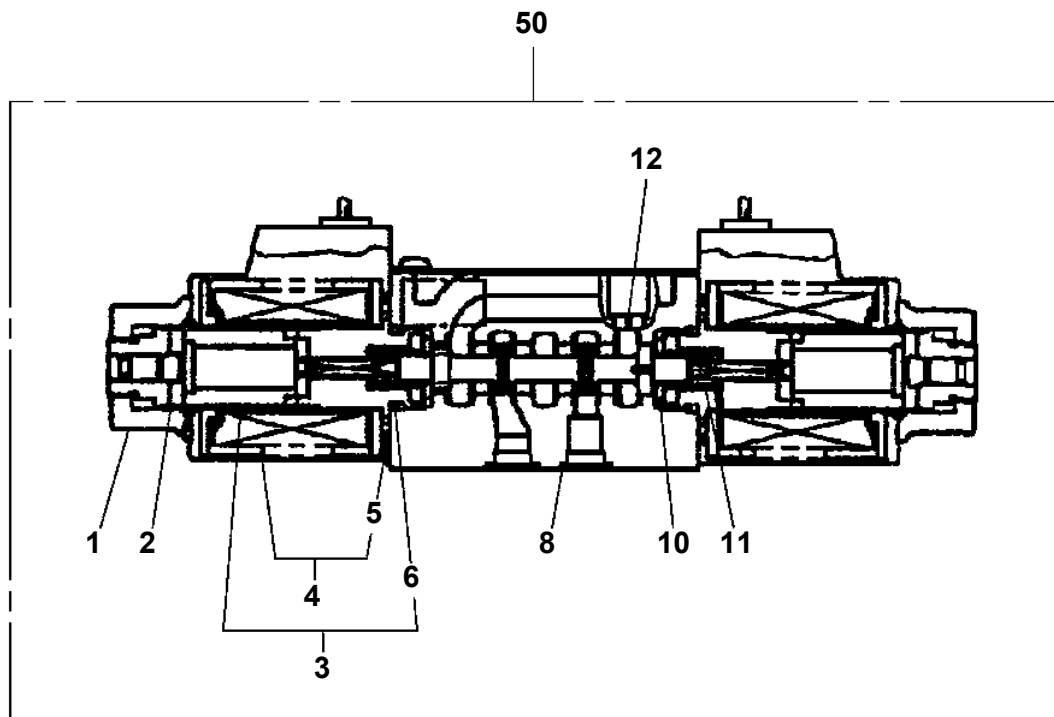
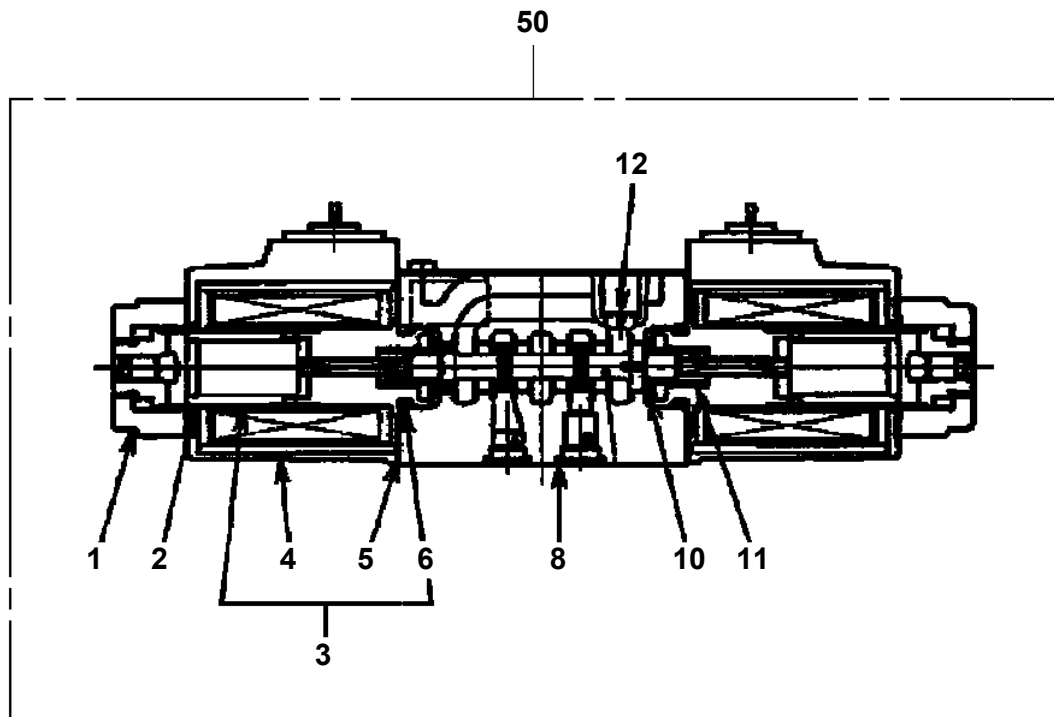
100



**AT-110-1 42084100080 UPPER
PI1100103-00 VALVE,RELIEF**

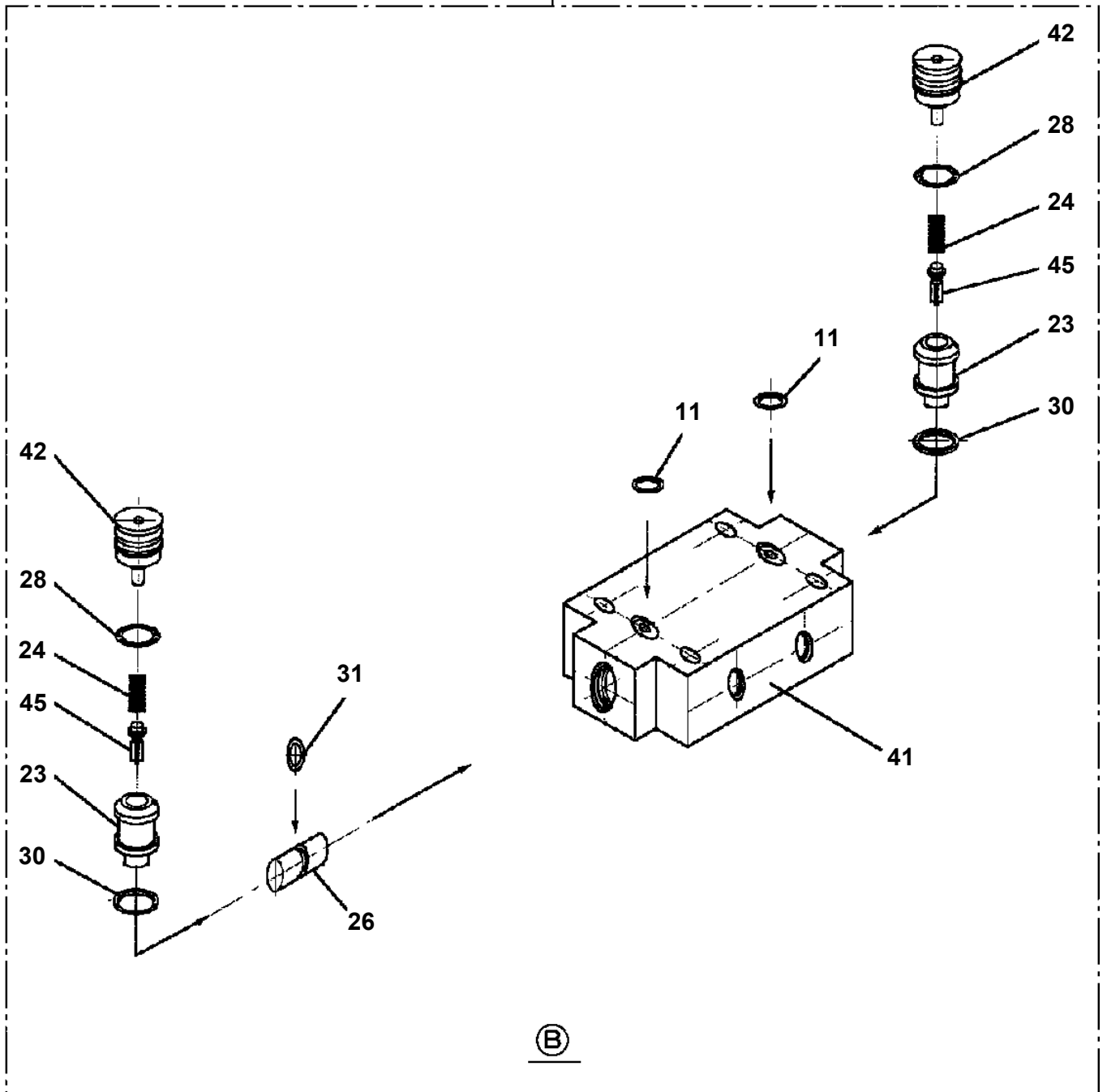


AT-110-1 42084100080 UPPER
PI1120237-01 VALVE,SOLENOID

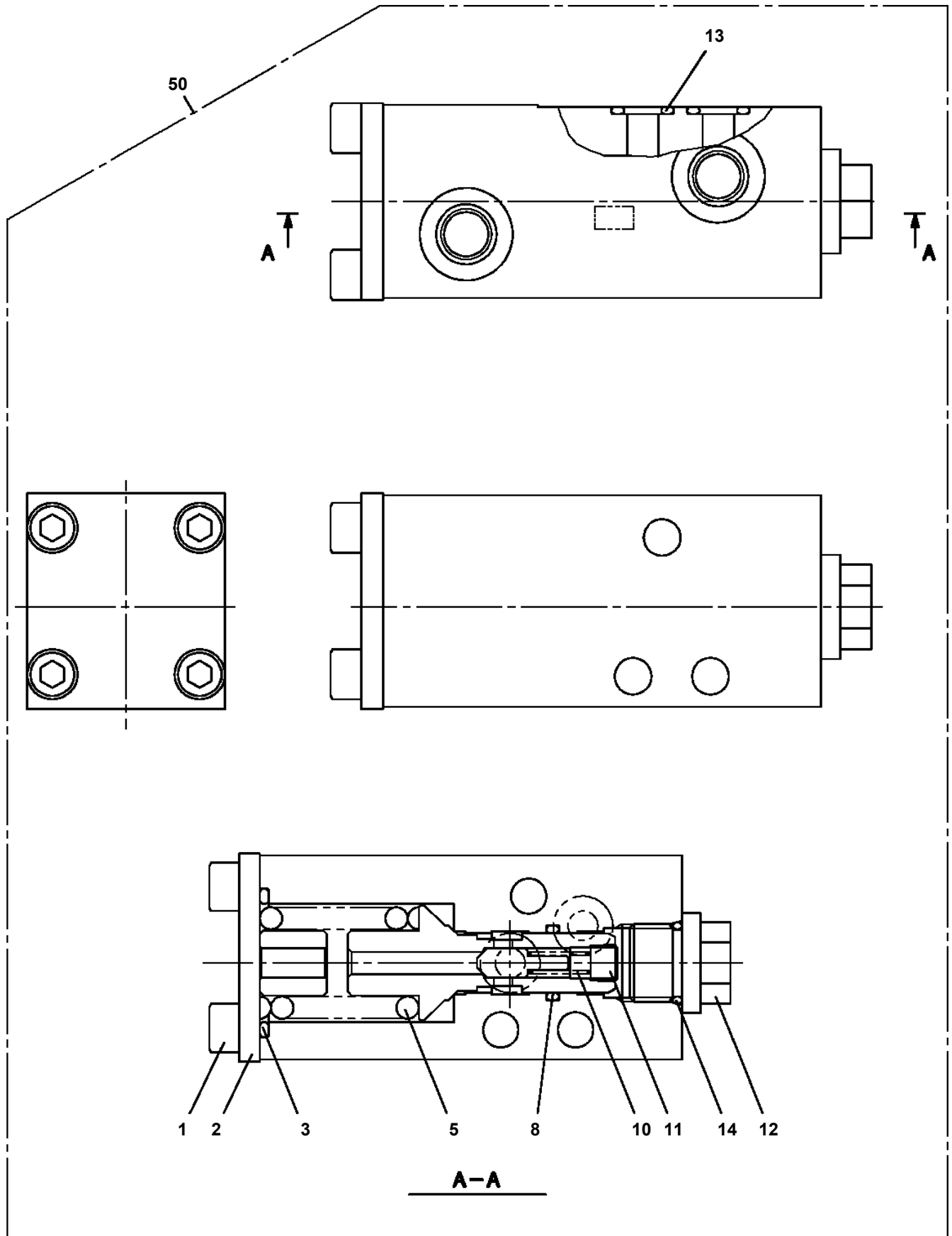


AT-110-1 42084100080 UPPER
PI1140133-01 VALVE,CHECK

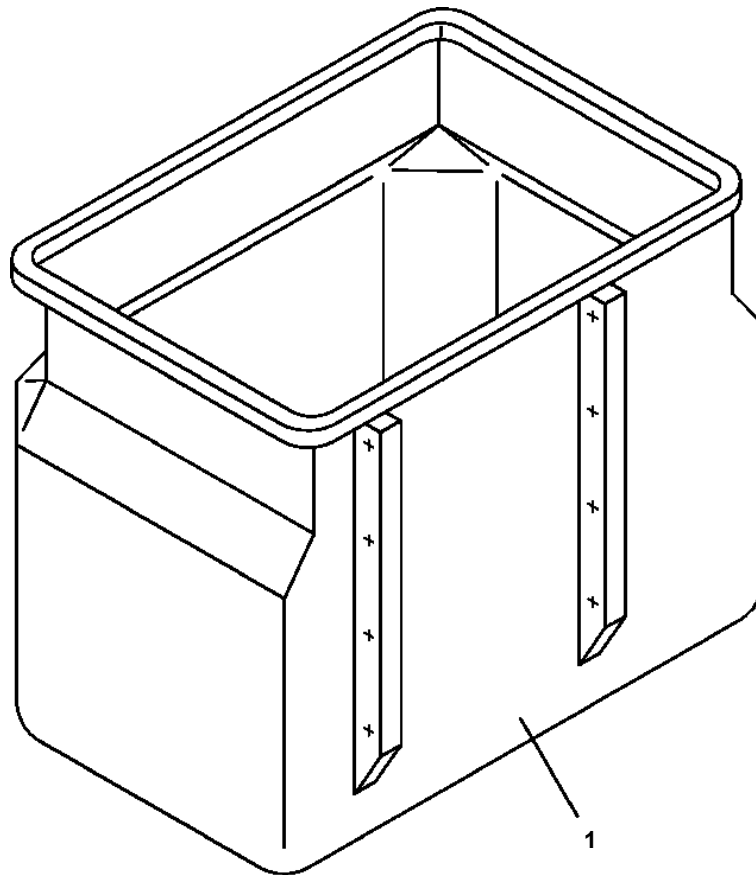
100



AT-110-1 42084100080 UPPER
PI1250098-00 VALVE,COUNTERBALANCE



**AT-110-1 42084100080 UPPER
PJ3010199-00 BUCKET (WHITE/WITHOUT BOSS)**



AT-110-1 42084100080 UPPER

Pos No.	Parts No	Parts Name	Qty	Unit	Technical Data	Serial No (Start)	Serial No (End)	Remarks	Pages
1	42262050200	BUCKET	1						

AT-110-1 42084100080 UPPER

Pos No.	Parts No	Parts Name	Qty	Unit	Technical Data	Serial No (Start)	Serial No (End)	Remarks	Pages
1	42272010100	COVER	1				218707		
	42272010101	COVER	1			218708			
2	90101208012	BOLT	10		M8X12				
3	90302040801	WASHER,SPRING	10		8				
4	90303070801	WASHER,PLAIN	6		8				
5	42272010200	COVER	1						

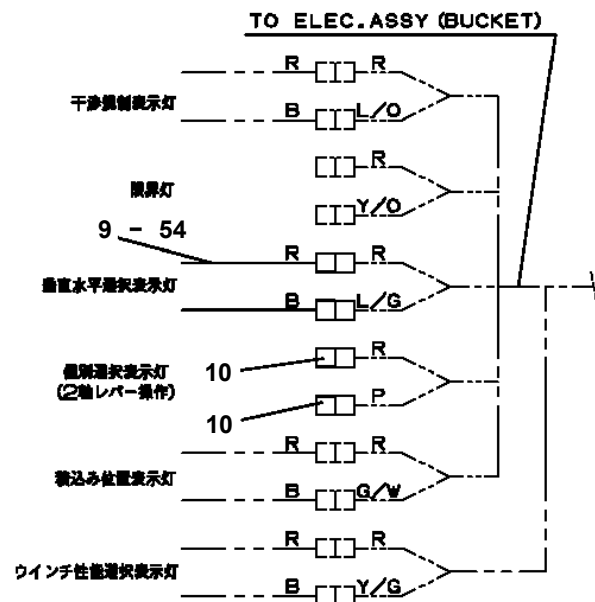
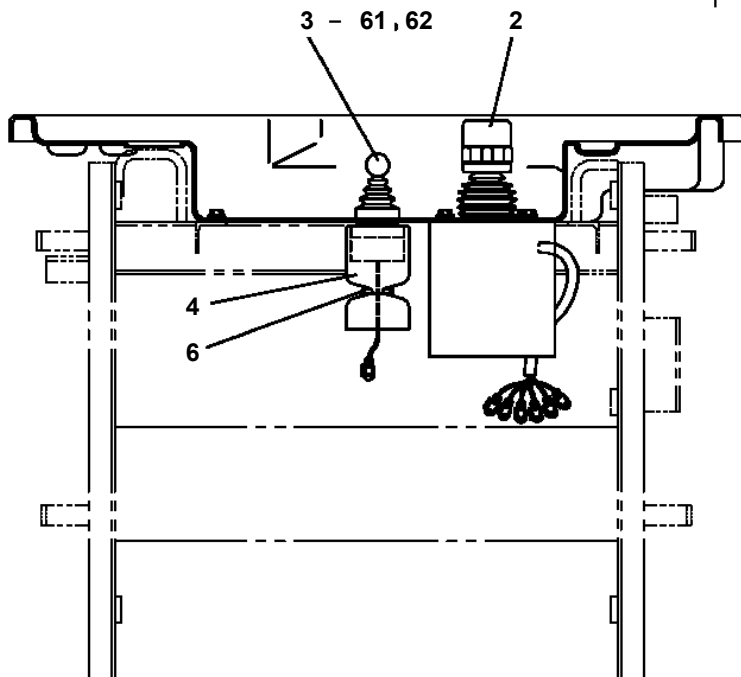
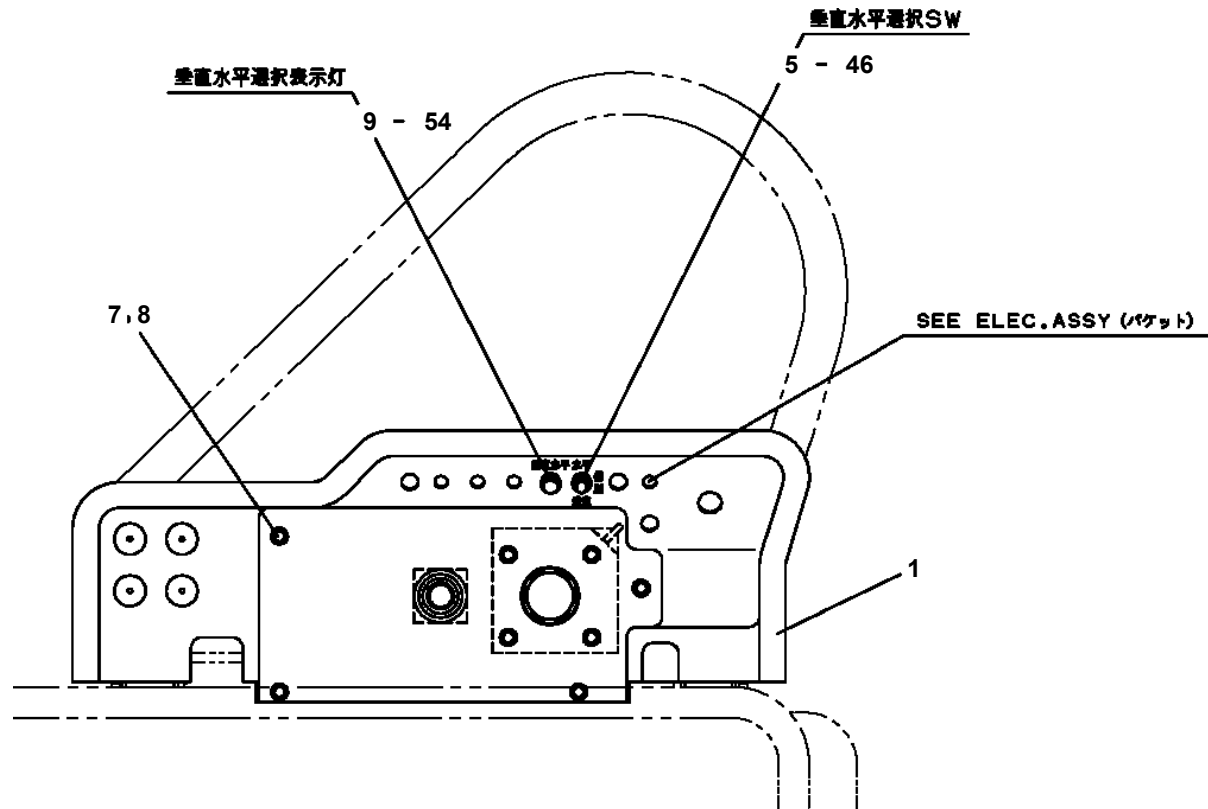
AT-110-1 42084100080 UPPER

Pos No.	Parts No	Parts Name	Qty	Unit	Technical Data	Serial No (Start)	Serial No (End)	Remarks	Pages
1	42264414100	COVER	1						
2	42264204200	COVER	1						
3	42265361100	COVER	1						
4	42265361200	COVER	1						
5	42265361300	COVER	1						
6	42265361400	COVER	1						
7	37000511280	PLATE	5						
8	37000520150	PLATE	4						
9	90183108015	BOLT	17		M8X15				
10	90183108020	BOLT	2		M8X20				
11	90183108030	BOLT	4		M8X30				

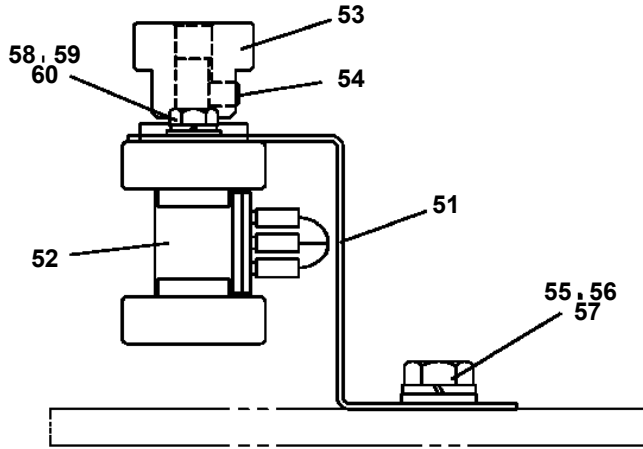
AT-110-1 42084100080 UPPER

Pos No.	Parts No	Parts Name	Qty	Unit	Technical Data	Serial No (Start)	Serial No (End)	Remarks	Pages
1	42501270100	COVER	1						
2	82400000393	INSULATOR	2						
3	80172804014	SCREW,MACHINE	2		M4X14				
4	90302040401	WASHER,SPRING	6		4				
5	90303070401	WASHER,PLAIN	2		4		217941		
	90303070401	WASHER,PLAIN	6		4	217942			
6	80175804010	SCREW,MACHINE	4		M4X10				
7	90201500400	NUT	4		M4				
8	90240200400	NUT,CAP	4		M4				
9	82464122900	HINGE	2						
10	42501270200	SUPPORT	1						
11	90183108015	BOLT	3		M8X15				
12	37000565980	PLATE	3				217941		
13	42501270300	PLATE	1						
15	80175804008	SCREW,MACHINE	4		M4X8				

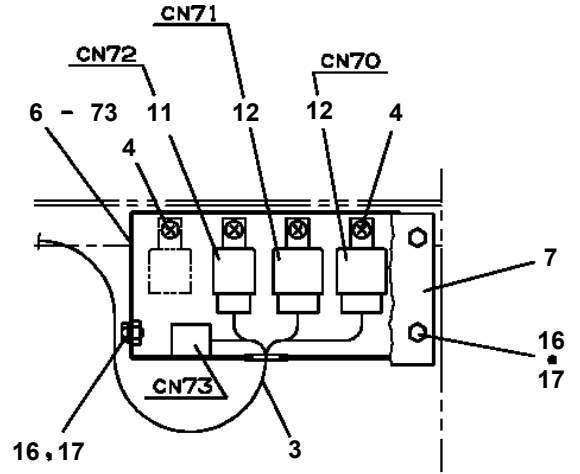
AT-110-1 42084100080 UPPER
 PL1920018-02 OPE.ASSY (BUCKET)



AT-110-1 42084100080 UPPER
PN1013138-02 ELEC.ASSY (BUCKET)

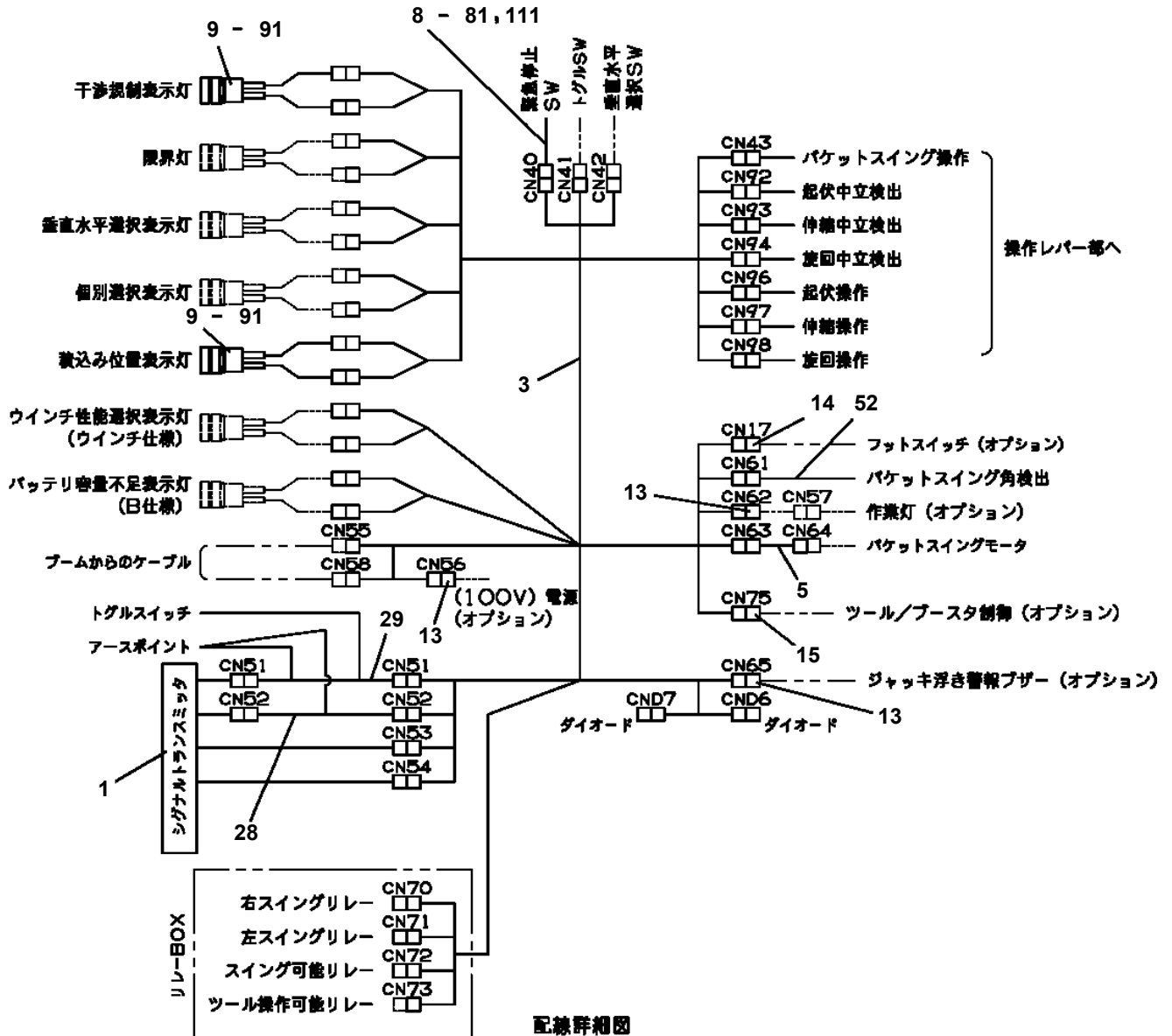


A



B

(リレー-BOX)



CLICK HERE TO **DOWNLOAD** THE COMPLETE MANUAL

- Thank you very much for reading the preview of the manual.
- You can download the complete manual from: www.heydownloads.com by clicking the link below



- Please note: If there is no response to CLICKING the link, please download this PDF first and then click on it.

CLICK HERE TO **DOWNLOAD** THE COMPLETE MANUAL

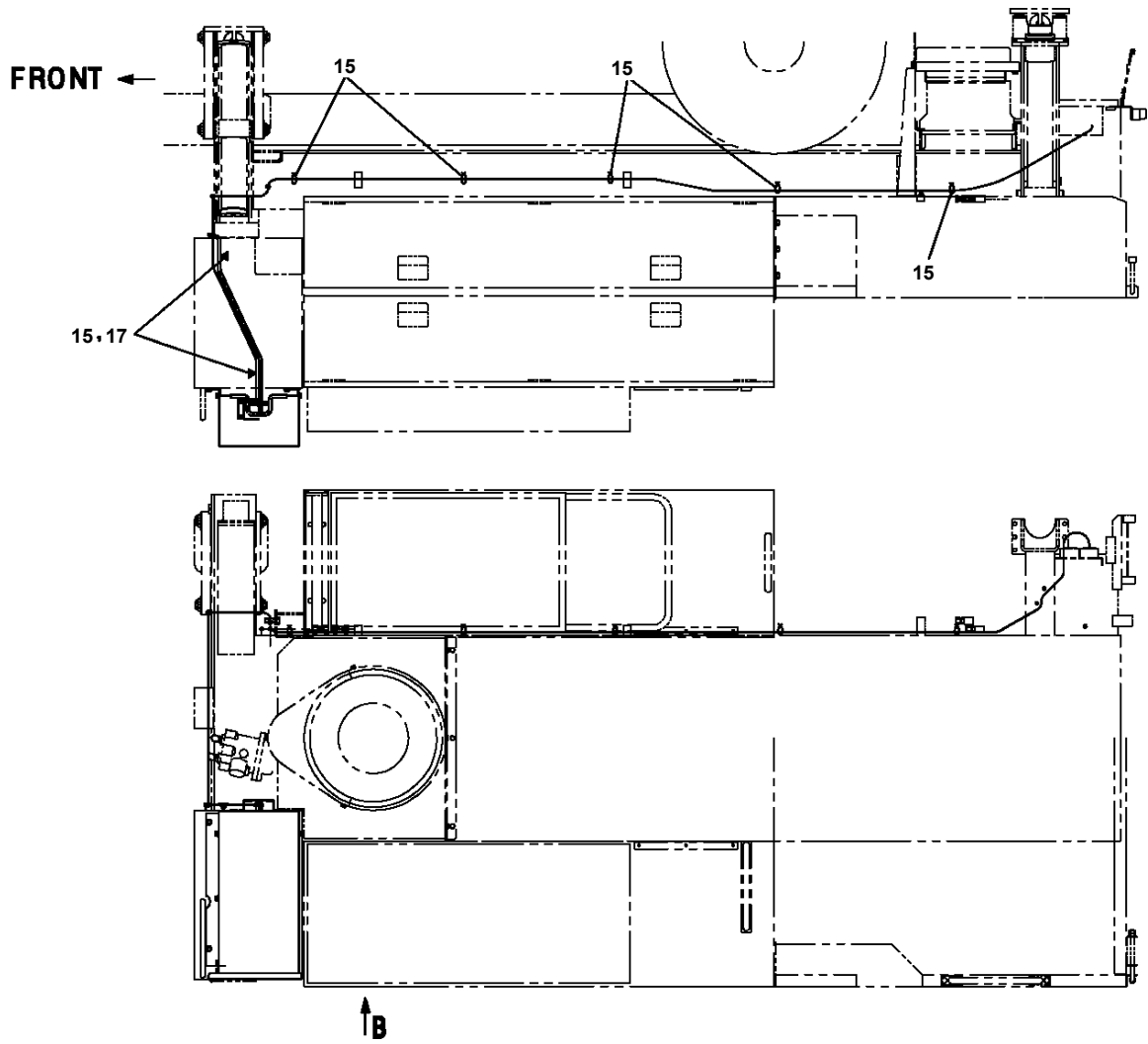
AT-110-1 42084100080 UPPER

Pos No.	Parts No	Parts Name	Qty	Unit	Technical Data	Serial No (Start)	Serial No (End)
1	42652671300	SWITCH PANEL	1				
2	99172106012	BOLT,TAPPING	12		M6X12		
3	42652611100	PANEL ASSY	1				
4	42652671100	RELAY ASSY	1				
5	90101208016	BOLT	2		M8X16		
6	90302040801	WASHER,SPRING	3		8		
7	80192484016	SCREW,MACHINE	6		M4X16		
8	80185404016	SCREW,MACHINE	4		M4X16		217819
	80175304014	SCREW,MACHINE	4		M4X14	217820	
9	82100002019	CLAMP	1		WR40		
10	90201200800	NUT	1		M8		
31	42651761310	PANEL	1				
32	42420623600	LAMP ASSY (RED)	1				
33	42651593500	SWITCH ASSY (WITH CONNECTOR)	1				
34	42651593400	SWITCH ASSY (WITH HARNESS,1 SW)	1				
36	82197518119	CAP (PLUS ONE MFG./BLACK)	2				
	82197518114	CAP (MATSUSHITA/BLACK)	2				
41	42651761411	SUPPORT	1				
42	42950564100	RELAY ASSY	3				
43	90302040301	WASHER,SPRING	14		3		
44	90303070301	WASHER,PLAIN	14		3		
45	80172303008	SCREW,MACHINE	12		M3X8		
46	42651761800	RELAY ASSY	2				
47	42651761700	RELAY ASSY	1				
48	42652671200	TERMINAL ASSY	1				
49	80172303012	SCREW,MACHINE	2		M3X12		
61	82100005004	LENS (RED)	1				
105	82100000266	DIODE	2				
108	82100000638	DIODE	1				

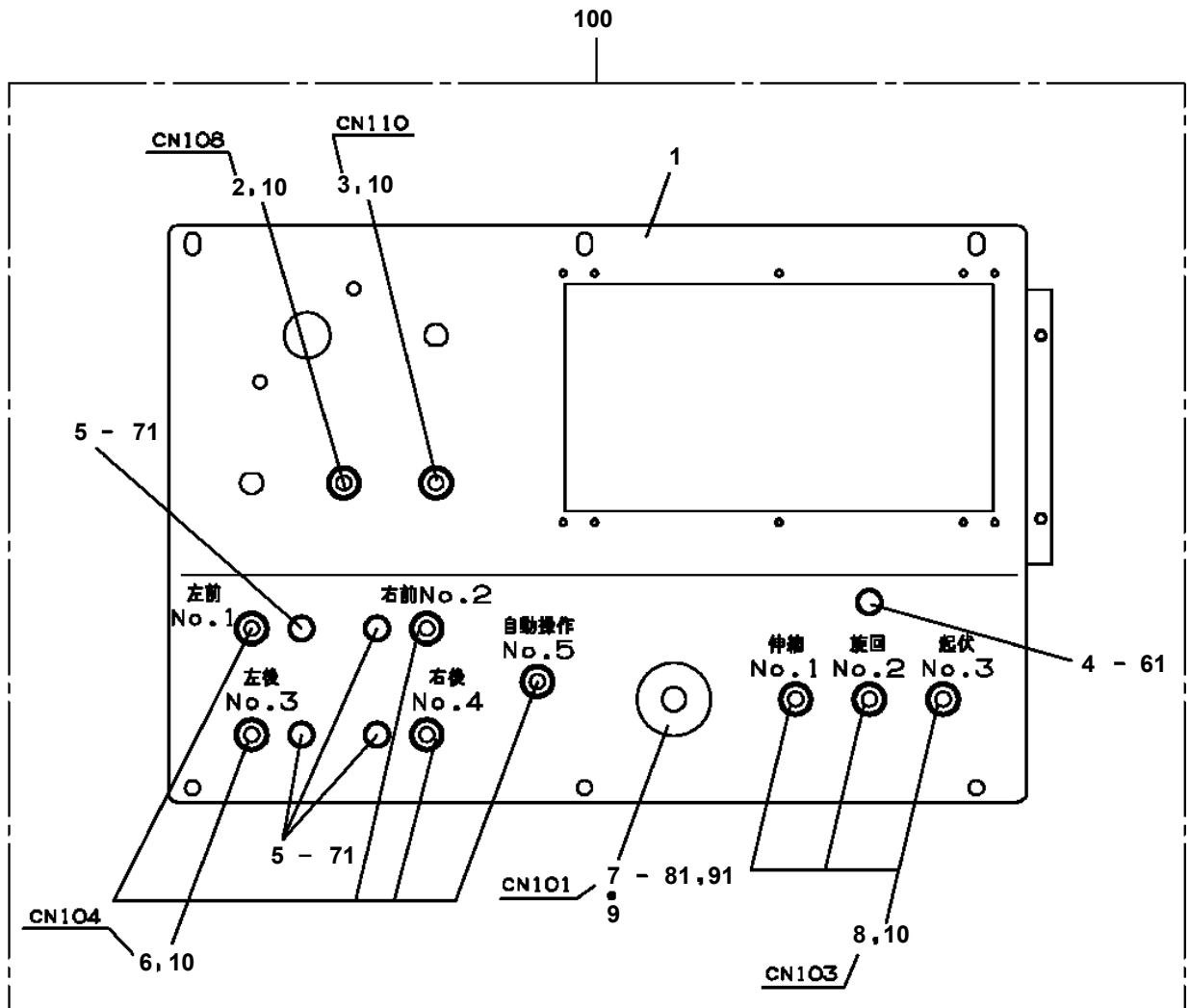
AT-110-1 42084100080 UPPER

Pos No.	Parts No	Parts Name	Qty	Unit	Technical Data	Serial No (Start)	Serial No (End)	Remarks
1	42500261100	HARNES	1					
2	42478362500	RELAY ASSY	1					
3	36140510000	DETECTOR ASSY,ANGLE	1					
4	42478362200	PLATE	1					
5	42651620400	COVER	1					
6	90101208016	BOLT	7		M8X16			
7	90302040801	WASHER,SPRING	6		8			
8	90101206014	BOLT	2		M6X14			
9	90302040601	WASHER,SPRING	2		6			
10	91810130240	FASTENER	20					
11	37000547660	PLATE	2		T=2.3			
31	37002220430	PLATE,CAUTION	1					
62	82400000201	GROMMET	1		KG-016			

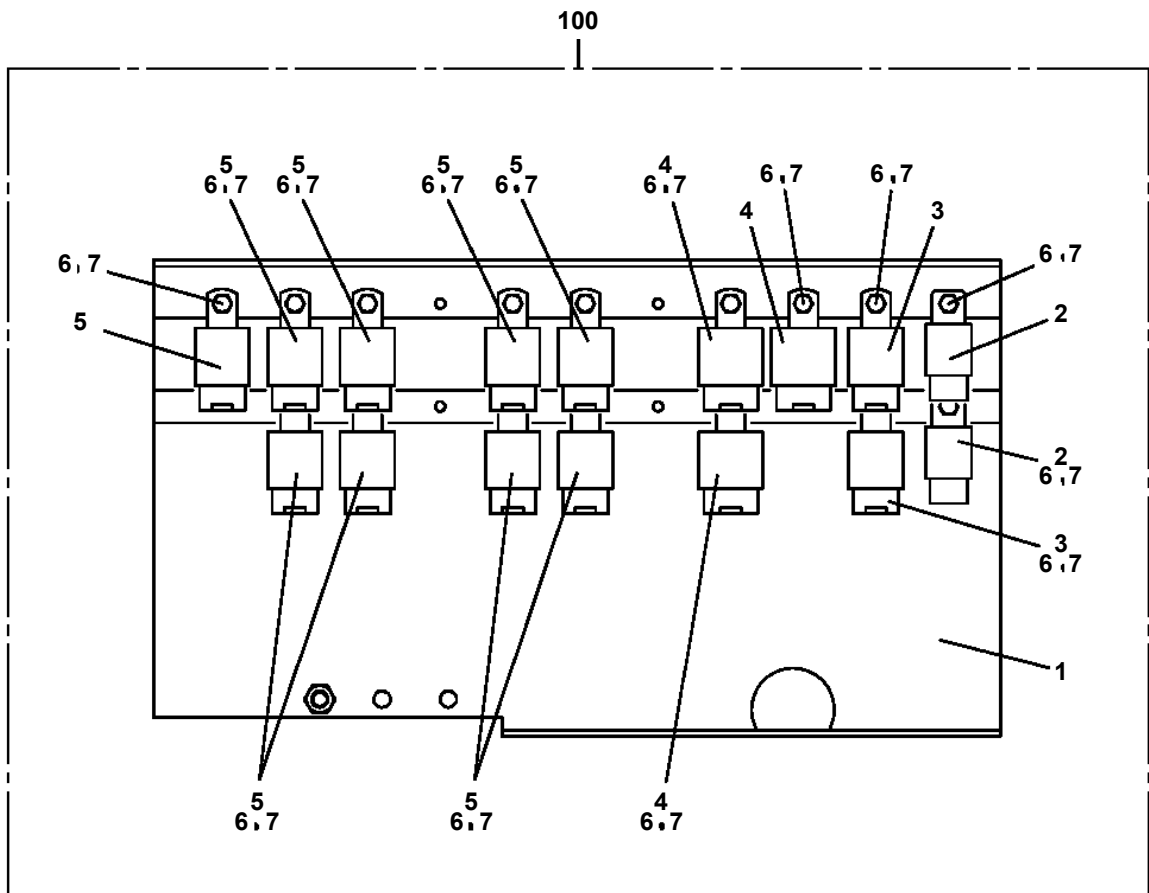
**AT-110-1 42084100080 UPPER
PN1013712-01 ELEC.ASSY (POWER SUPPLY/LOWER,INVERTER)**



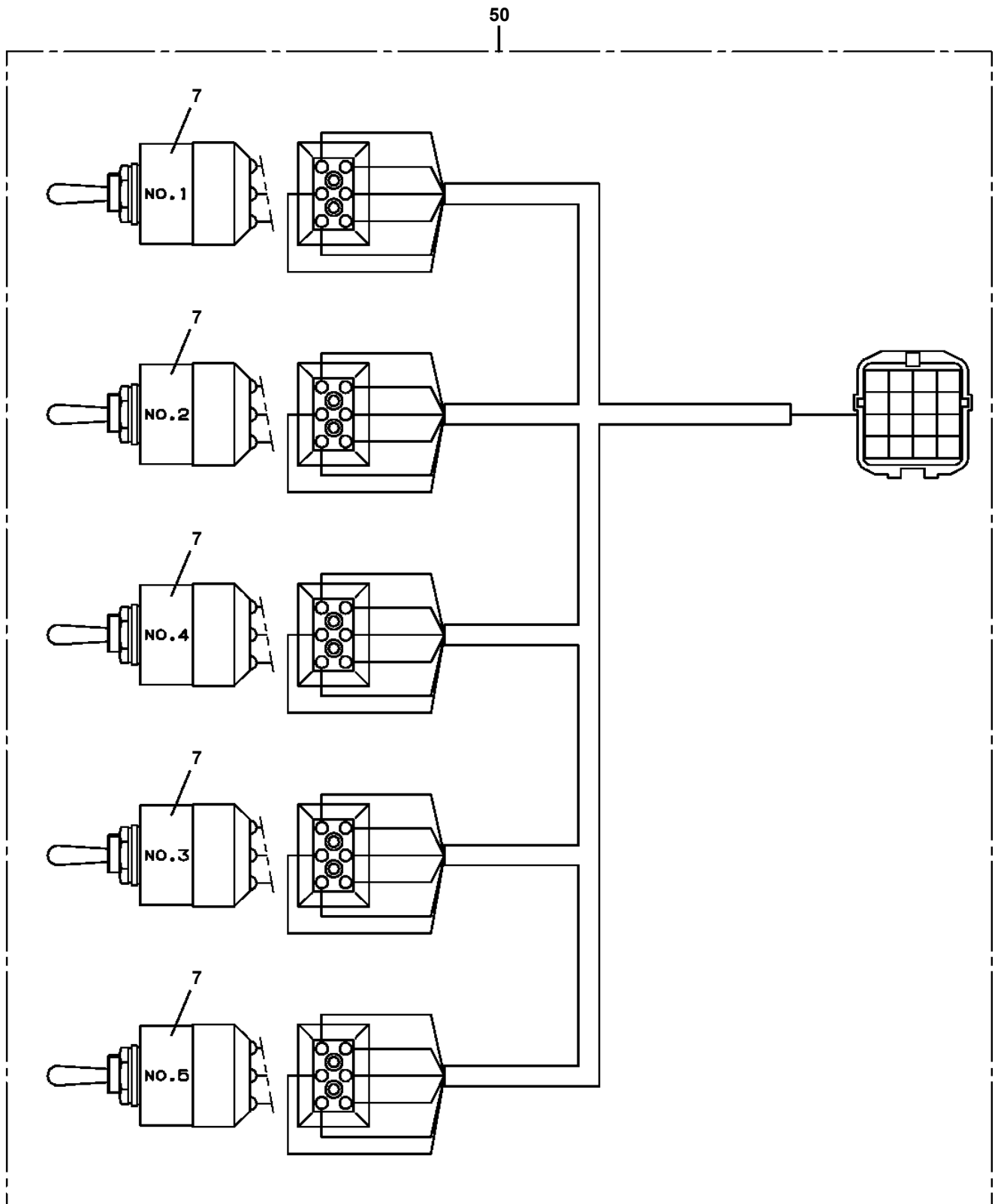
AT-110-1 42084100080 UPPER
 PN1060141-02 SWITCH PANEL



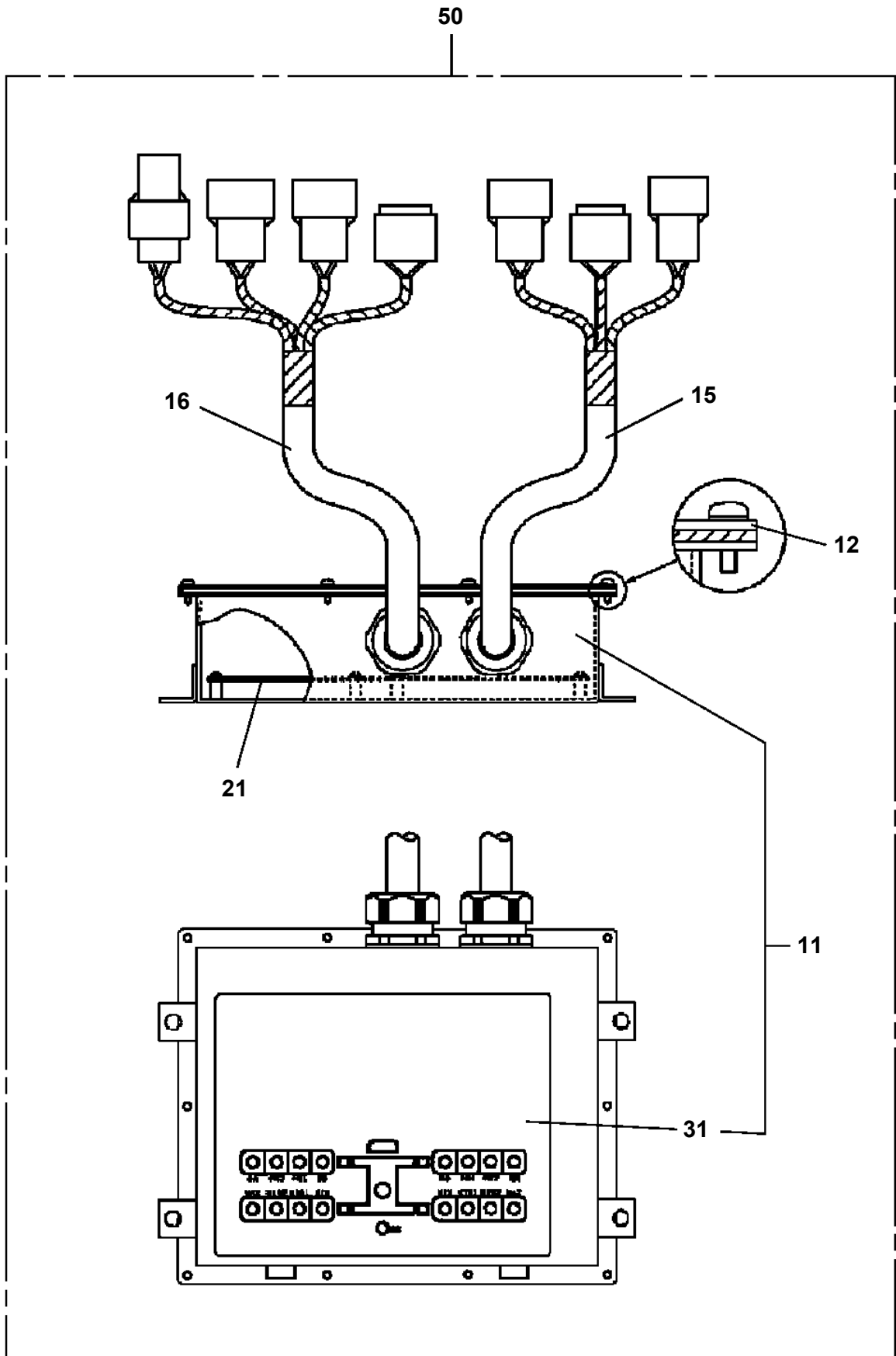
AT-110-1 42084100080 UPPER
PN1110422-00 RELAY ASSY



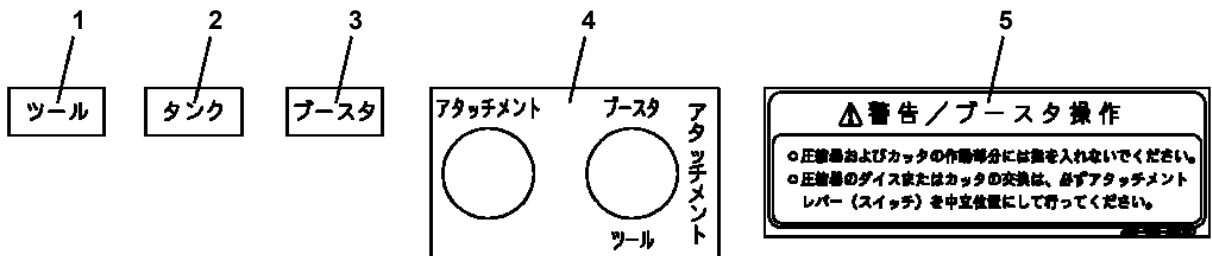
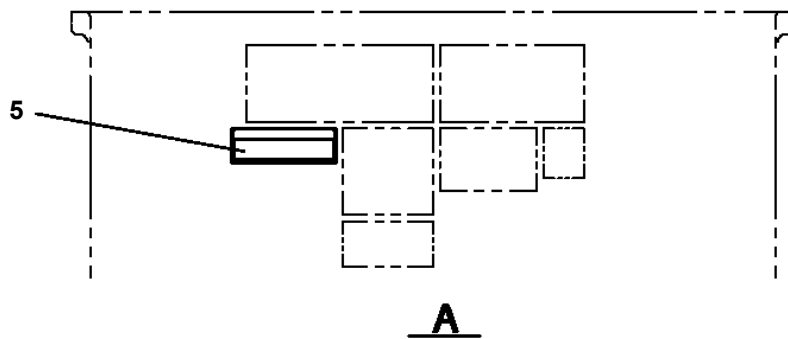
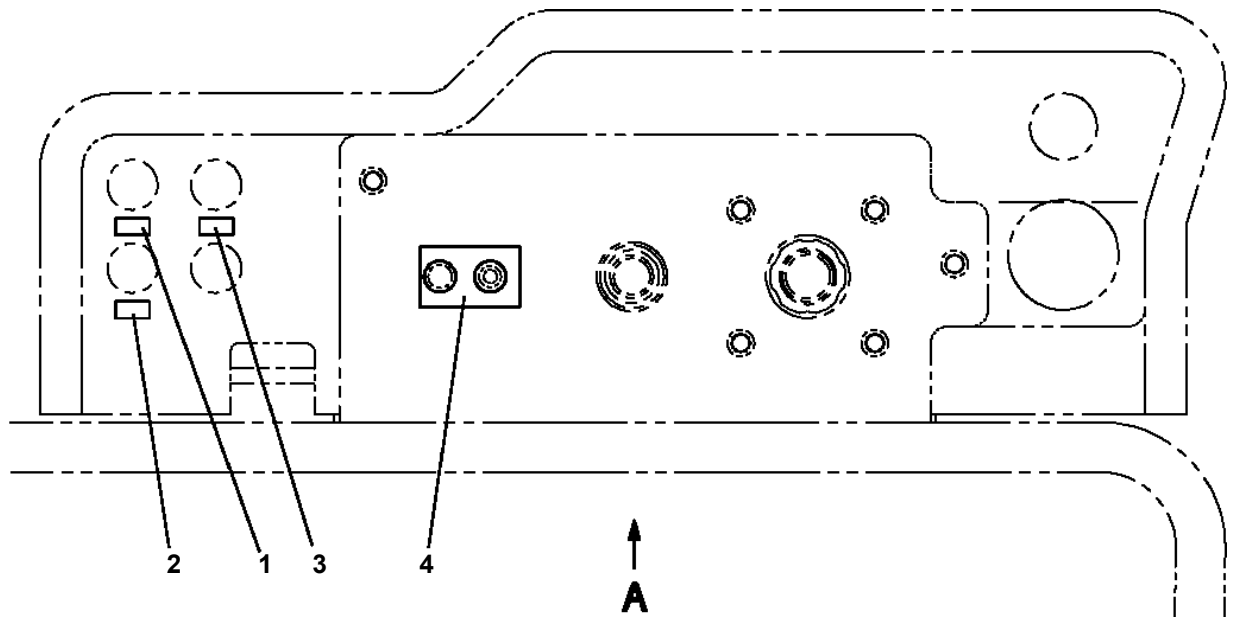
**AT-110-1 42084100080 UPPER
PN1140168-00 SWITCH ASSY (WITH HARNESS,5 SW)**



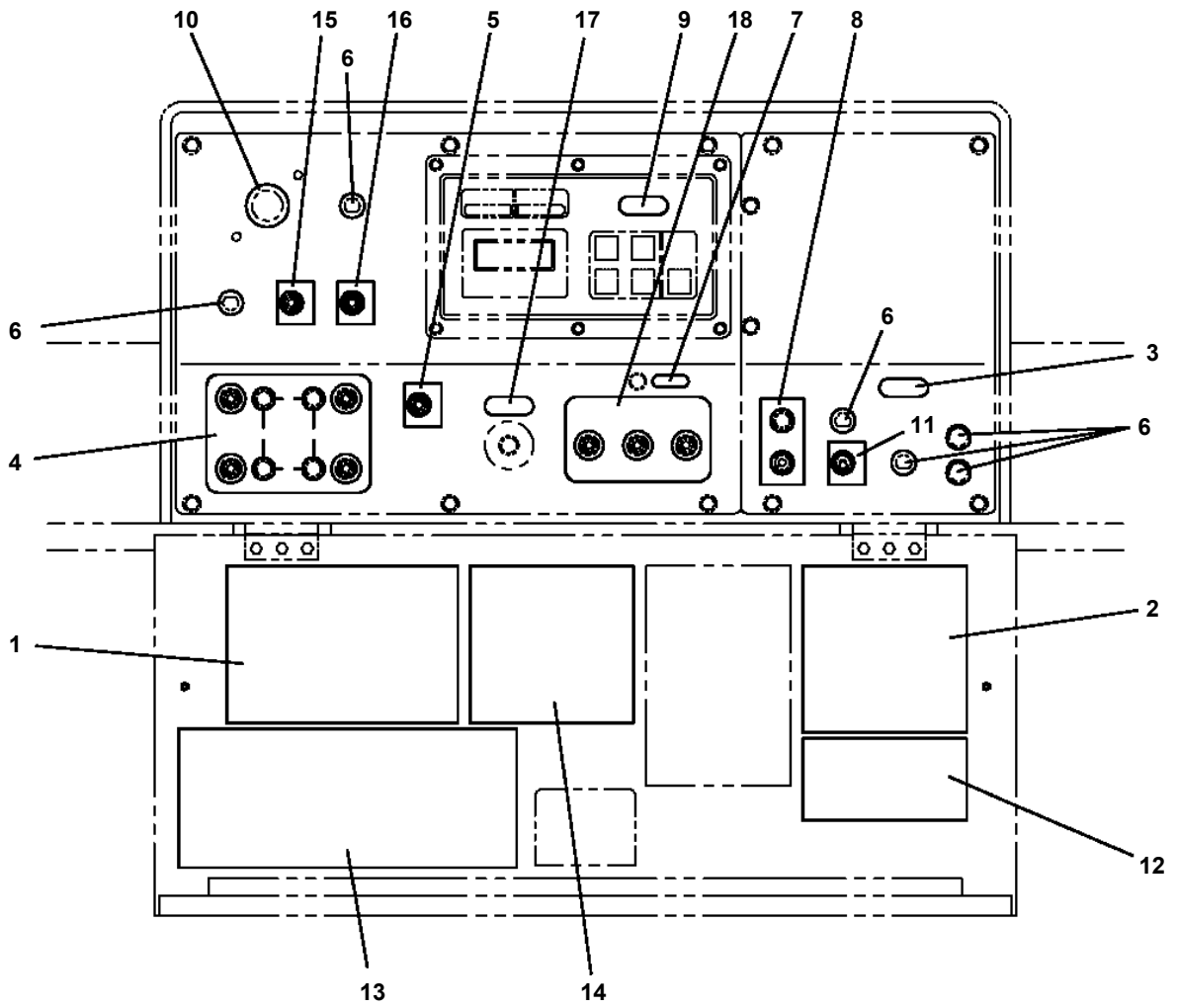
AT-110-1 42084100080 UPPER
PN1210151-01 TRANSMITTER, SIGNAL



AT-110-1 42084100080 UPPER
 PO1013123-01 PLATE ASSY,NAME (OPTION,BOOSTER)



**AT-110-1 42084100080 UPPER
PO1013747-01 PLATE ASSY,NAME (LOWER CONTROLS)**



AT-110-1 42084100080 UPPER

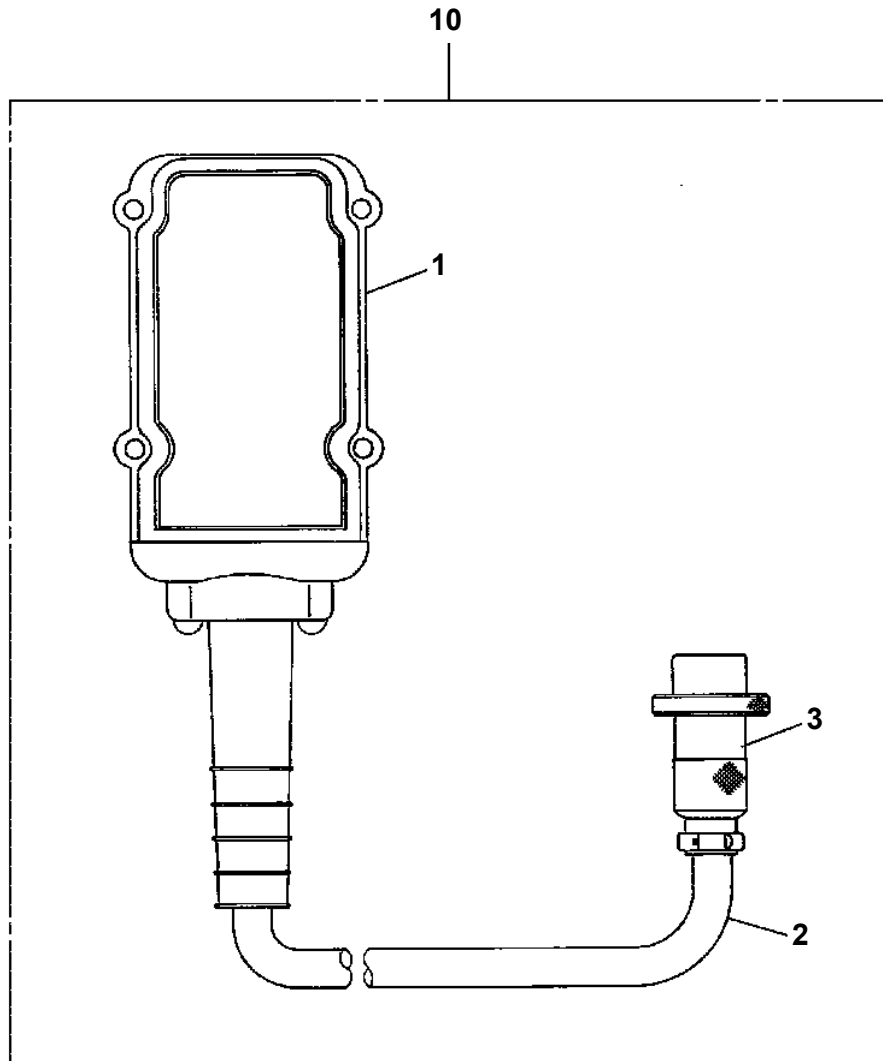
Pos No.	Parts No	Parts Name	Qty	Unit	Technical Data	Serial No (Start)	Serial No (End)	Remarks	Pages
1	42391860700	REFLECTOR (RED)	3						

AT-110-1 42084100080 UPPER

Pos No.	Parts No	Parts Name	Qty	Unit	Technical Data	Serial No (Start)	Serial No (End)	Remarks	Page
1	82109113022	SWITCH,EMITTER	1						
2	82109103022	SWITCH,RECEIVER	1						
100	42502231200	SWITCH ASSY	1						

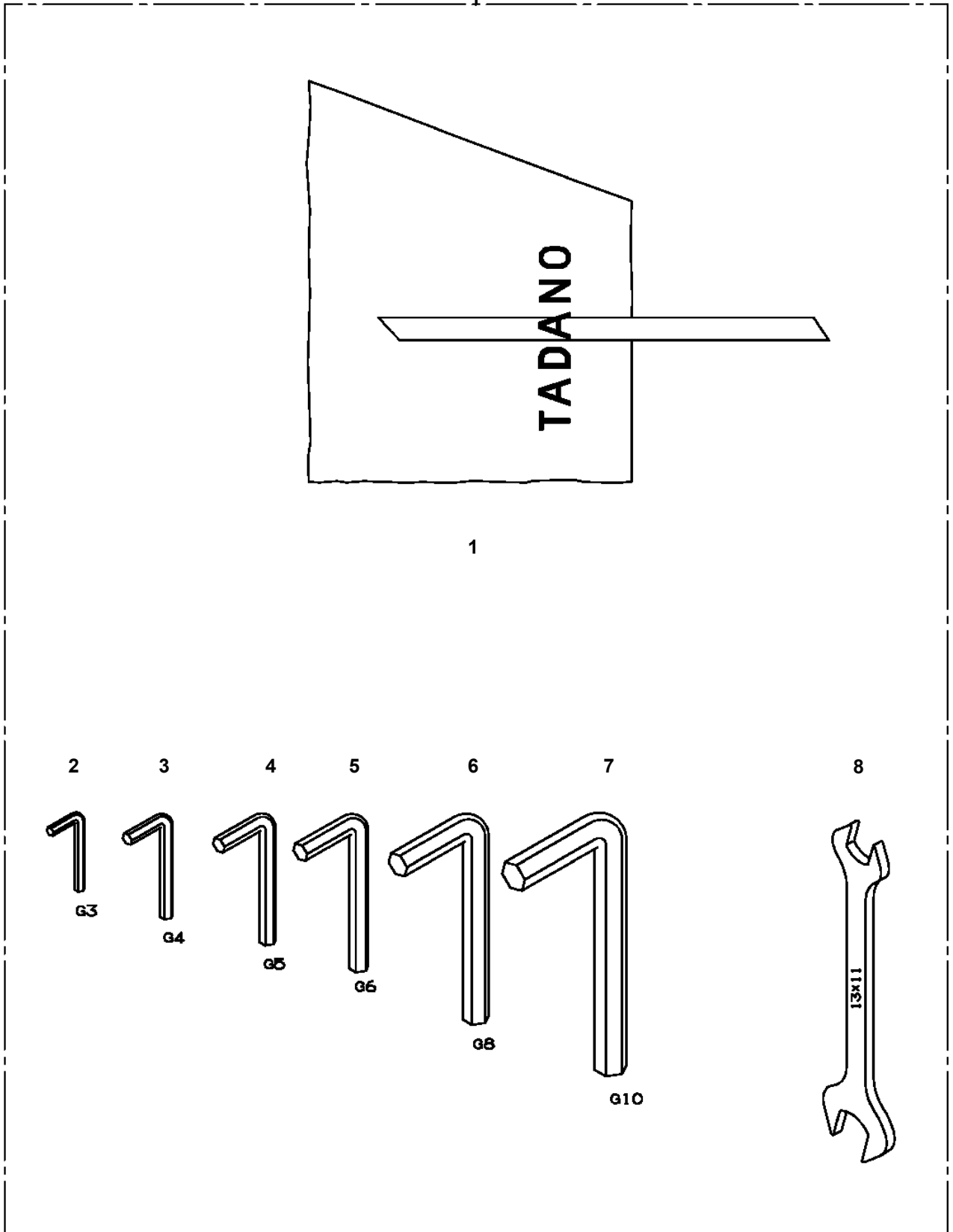
AT-110-1 42084100080 UPPER

PV1030110-00 SWITCH BOX (ELECTRIC BOOSTER, 5M,NANABOSI,SINKOU DENKI)

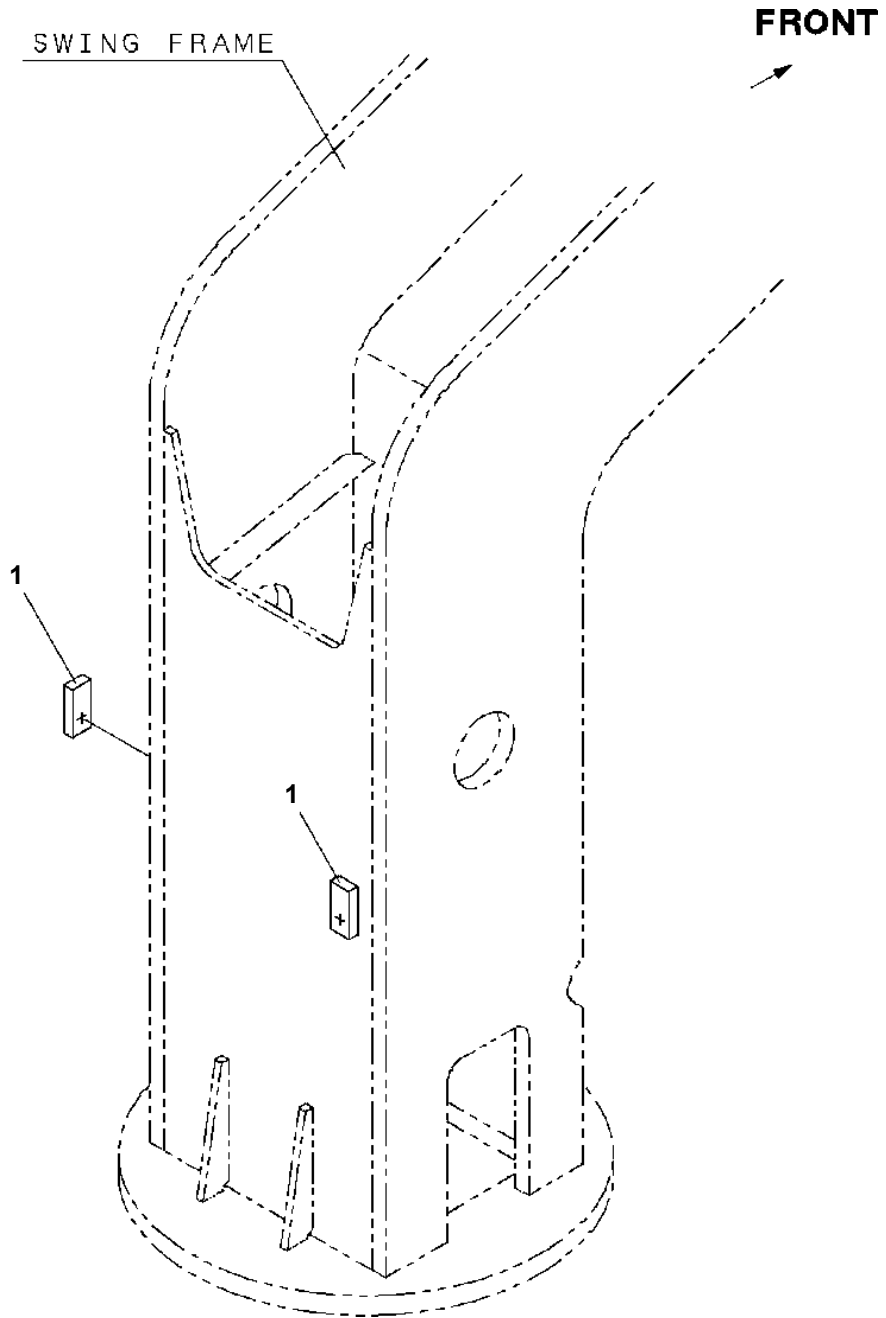


AT-110-1 42084100080 UPPER
PW1030049-01 TOOLS

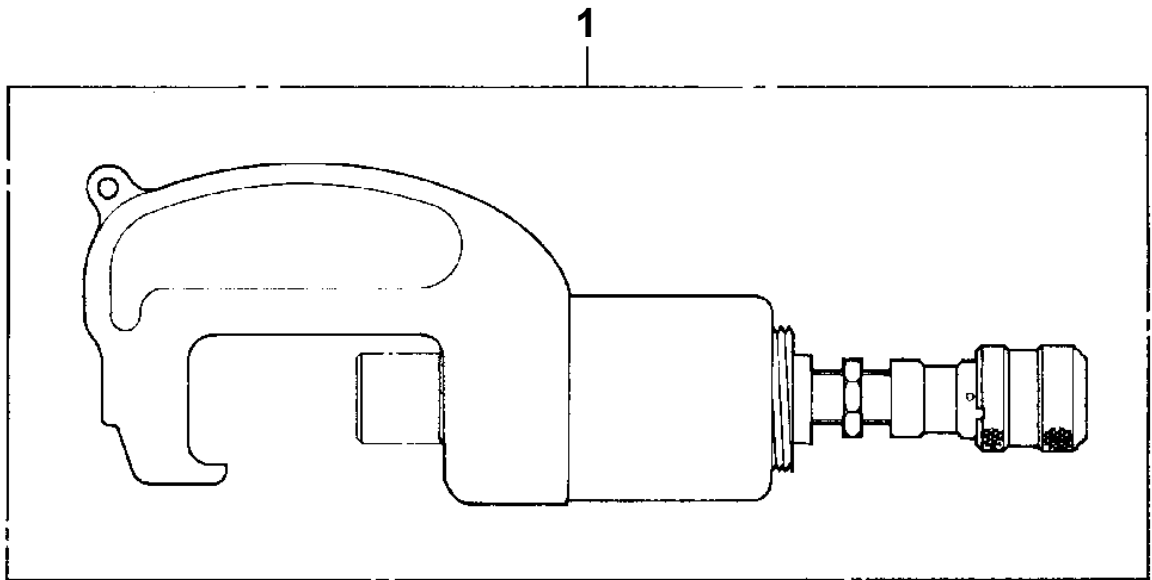
50



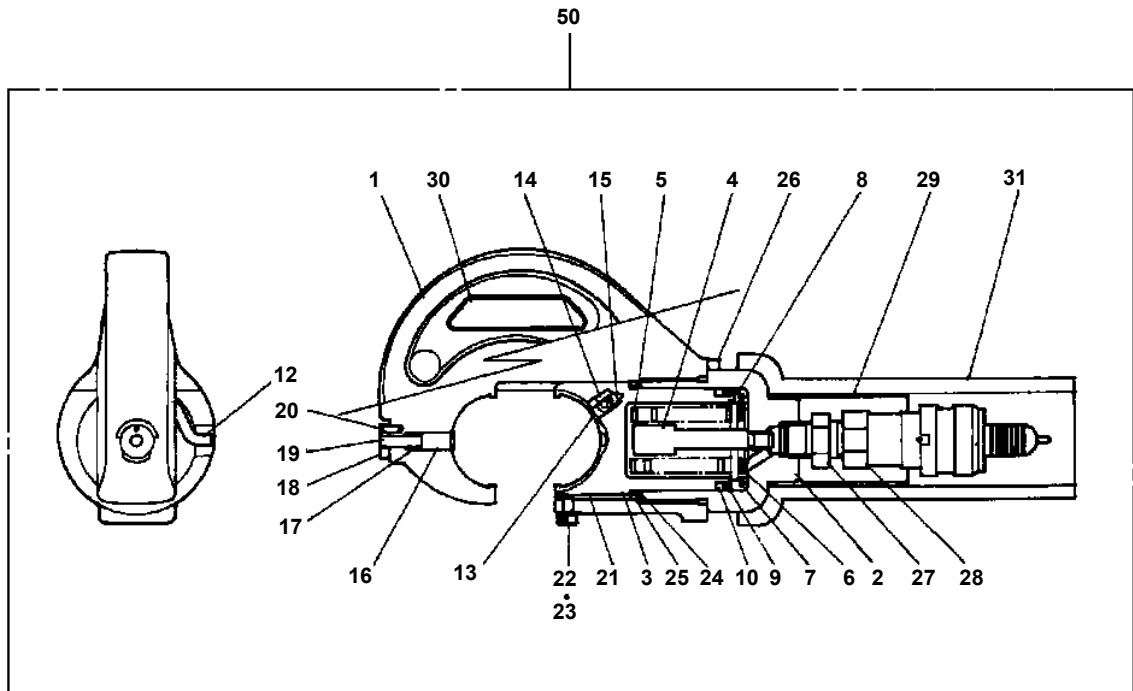
**AT-110-1 42084100080 UPPER
PX1810141-00 MOUNT,SUPPORT**



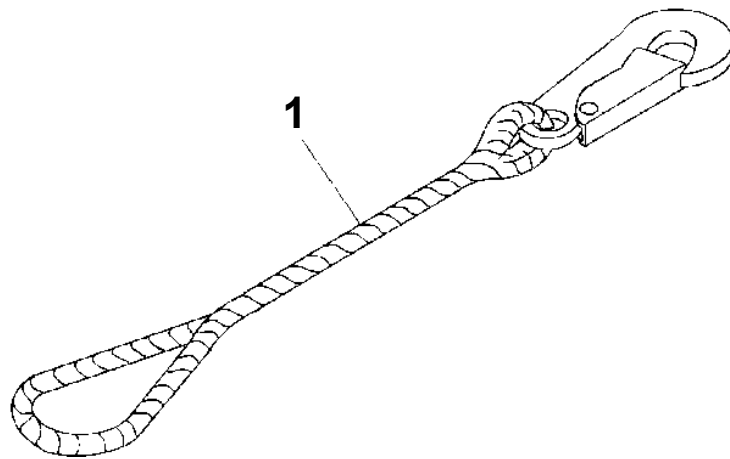
**AT-110-1 42084100080 UPPER
PY1050005-00 CLAMP HEAD (O.D.K 10TON ELECTRIC)**



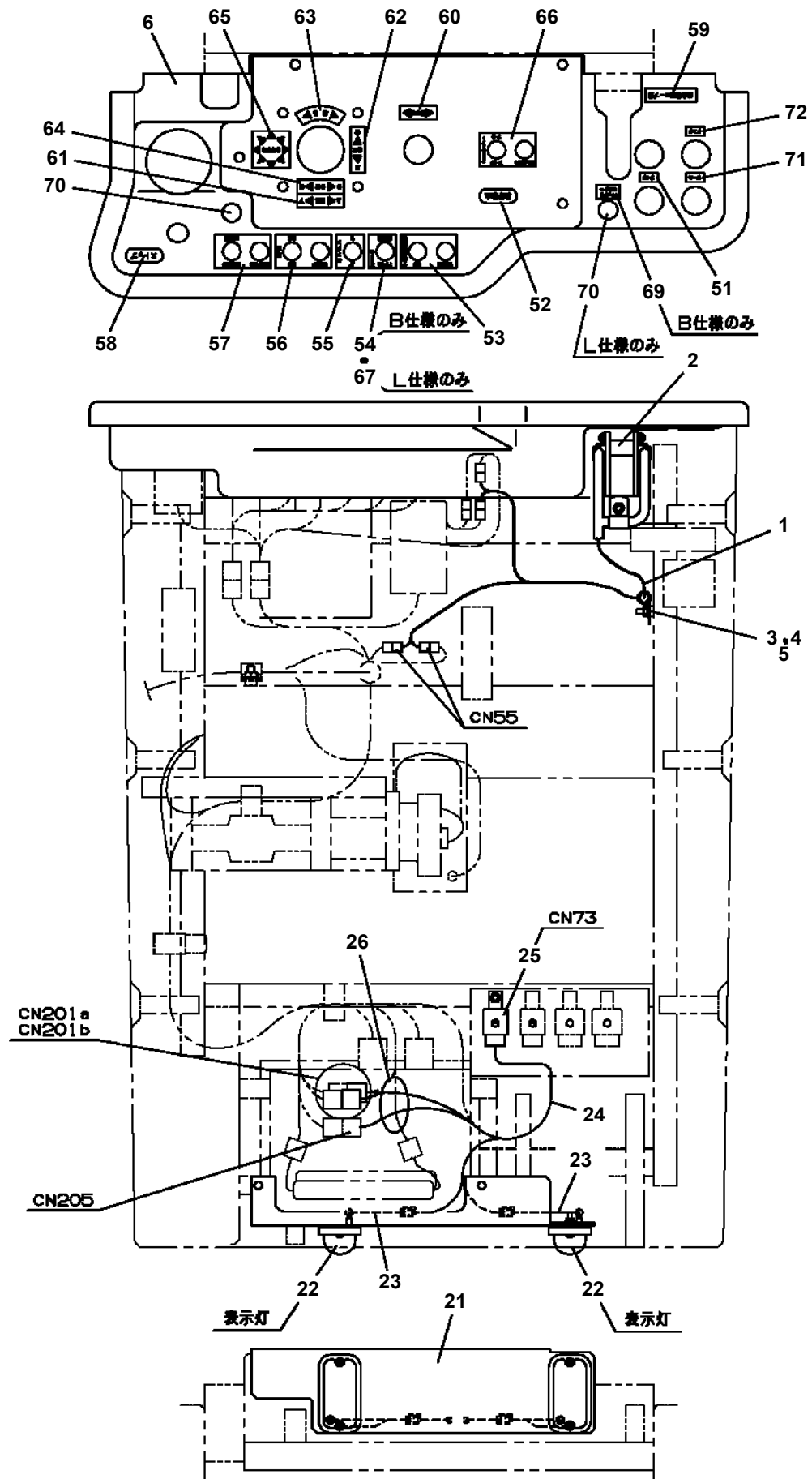
**AT-110-1 42084100080 UPPER
PY1050012-00 CLAMP HEAD (SANWA,12TON,TITANIUM)**



**AT-110-1 42084100080 UPPER
PY1070001-00 ROPE (SAFETY,1.5M,WITH HOOK)**



AT-110-1 42084100080 UPPER
PY1130041-01 INTERLOCK (KANDENKO/SAFETY ROPE:SIB,SIL)



**AT-110-1 42084100080 UPPER
PY1160171-00 BOOSTER (AIR/40T,INCHING OR PULSE)**

1	ブースタ BOOSTER
2	プレートASSY,ネーム PLATE ASSY,NAME
3	パイピング,アウトレット(ブーム/スイング フレーム) PIPING,OUTLET (BOOM/SWING FRAME)
4	パイピング,ハイドラリック アウトレット(ロー) PIPING,HYDRAULIC OUTLET (LOWER)
5	スイッチ インスタレーション SWITCH INSTALLATION
6	マウント,サポート MOUNT,SUPPORT

**AT-110-1 42084100080 UPPER
PY1160176-00 BOOSTER (ELECTRIC/40TON,INCHING)**

1	ブースタ BOOSTER
2	プレートASSY,ネーム PLATE ASSY,NAME
3	パイピング,アウトレット(ブーム/スイング フレーム) PIPING,OUTLET (BOOM/SWING FRAME)
4	パイピング,ハイドロリック アウトレット(ロー) PIPING,HYDRAULIC OUTLET (LOWER)
5	スイッチ インスタレーション SWITCH INSTALLATION
6	マウント,サポート MOUNT,SUPPORT

AT-110-1 42084100080 UPPER
PY1160200-00 BOOSTER (AIR/40TON,INCHING OR PULSE,W)

指示番号 KEY NO.	ブースタ (エアシキ/40TON,カリホシ ^ツ キ,ハ ^ル スシキ,Wシヨウ) BOOSTER (AIR/40T,PULSE,W)
1	ブースタ BOOSTER
2	プレートASSY,ネーム PLATE ASSY,NAME
3	スイッチ インスタレーション SWITCH INSTALLATION

AT-110-1 42084100080 UPPER

Pos No.	Parts No	Parts Name	Qty	Unit	Technical Data	Serial No (Start)	Serial No
1	42477771000	LAMP ASSY	1				
2	42477770100	SUPPORT	1				
3	42477770200	HARNESS	1				
4	90813108020	BOLT,WING	1		M8X20		
5	90101208016	BOLT	2		M8X16		
6	90302040801	WASHER,SPRING	2		8		
7	90201200600	NUT	3		M6		
8	90302040601	WASHER,SPRING	3		6		
9	82100002006	CLAMP	3		WR10		
10	91810130240	FASTENER	10				
31	82165904020	LAMP	1		24V 60W		
32	90101212020	BOLT	1		M12X20		
33	90302041201	WASHER,SPRING	1		12		
34	37000179070	PIN	1				
35	80620210160	PIN,SNAP	1				
60	82100000054	BULB,LAMP	1		24V 60W		
66	82100002838	SWITCH ASSY (WITH HARNESS,TERMINAL)	1				

AT-110-1 42084100080 UPPER

Pos No.	Parts No	Parts Name	Qty	Unit	Technical Data	Serial No (Start)	Serial No (End)	Remark
1	42477737510	CASE	1					
2	42477737520	COVER	1					
4	42477737530	BRACKET	1					
5	42477737540	BOARD	1					
18	44430517590	RELAY	1					
31	(*****)	P-ROM	1					
33	42477737550	FUSE	1		FGMB 125V 5A			
50	42477731300	CONTROL UNIT (BOOSTER)	1					

AT-110-1 42084100080 UPPER

Pos No.	Parts No	Parts Name	Qty	Unit	Technical Data	Serial No (Start)	Serial No (End)	Remarks	Pages
1	91810132530	FASTENER	5						
2	90201200600	NUT	1		M6				
3	90302040601	WASHER,SPRING	1		6				
4	82400000204	GROMMET	1		L=320				
5	42476303100	CABLE ASSY	1		L=1000				
6	82100002006	CLAMP	1		WR10				
27	82122910400	CAP	1						

AT-110-1 42084100080 UPPER

Pos No.	Parts No	Parts Name	Qty	Unit	Technical Data	Serial No (Start)	Serial No (E
5	80456210600	JOINT,SELF SEALING	1				
6	80456240600	JOINT,SELF SEALING (WITH DUST CAP)	1				
11	42471437520	CAP	1				
30	42471080000	HOSE,BOOSTER (MAIL-FEMALE,3M)	1				

AT-110-1 42084100080 UPPER

Pos No.	Parts No	Parts Name	Qty	Unit	Technical Data	Serial No (Start)	Serial No (E
5	80456210600	JOINT,SELF SEALING	1				
6	80456240600	JOINT,SELF SEALING (WITH DUST CAP)	1				
11	42471437520	CAP	1				
30	42471085000	HOSE,BOOSTER (MALE-FEMALE,5M)	1				

AT-110-1 42084100080 UPPER

Pos No.	Parts No	Parts Name	Qty	Unit	Technical Data	Serial No (Start)	Serial No (End)
1	42471271000	DRILL ASSY	1				
2	80460003080	JOINT	2		S,G3/8-3/4-16UNF		
3	37002425110	HOSE	2		L=2500		
4	91810132530	FASTENER	4				
5	80456020610	JOINT,SELF SEALING	1				
6	42340013200	JOINT,SELF SEALING (WITH CAP)	1				
11	42340017550	CAP (DUST)	1				
16	42340017510	CAP (DUST)	1				
20	42471270000	DRIL,HYDRAULIC	1				

AT-110-1 42084100080 UPPER

Pos No.	Parts No	Parts Name	Qty	Unit	Technical Data	Serial No (Start)	Serial No (End)	Remarks
1	42474540000	HANGER (FOR BUCKET,FRP)	1					

CLICK HERE TO **DOWNLOAD** THE COMPLETE MANUAL

- Thank you very much for reading the preview of the manual.
- You can download the complete manual from: www.heydownloads.com by clicking the link below



- Please note: If there is no response to CLICKING the link, please download this PDF first and then click on it.

CLICK HERE TO **DOWNLOAD** THE COMPLETE MANUAL