

AT-110-5 42084541556 UPPER,LOWER,ISUZU TPG-NKR85AN-EE5AHY-JM

PB0000275-02 UPPER STRUCTURE SYSTEM

PB0000500-02 LOWER STRUCTURE SYSTEM

ASSEMBLY

CLICK HERE TO **DOWNLOAD** THE COMPLETE MANUAL

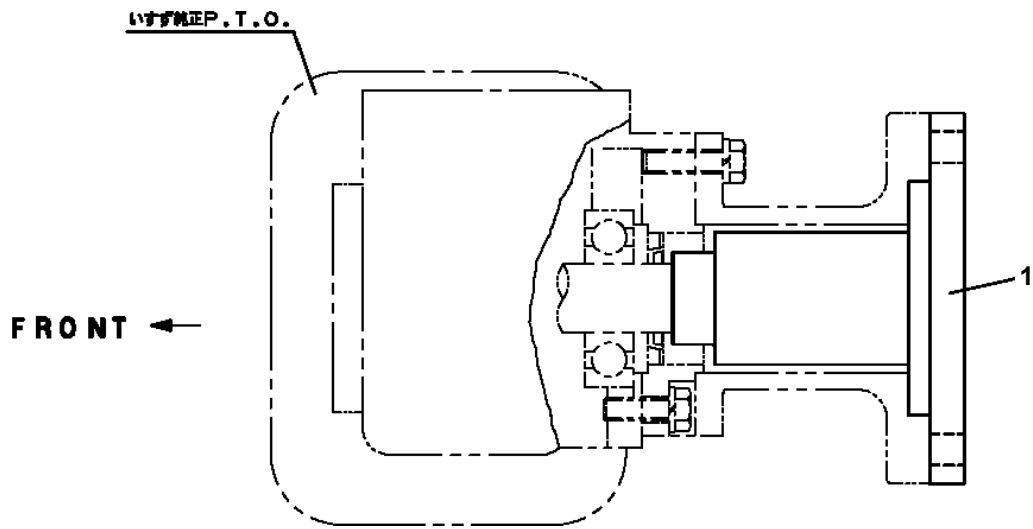
- Thank you very much for reading the preview of the manual.
- You can download the complete manual from: www.heydownloads.com by clicking the link below



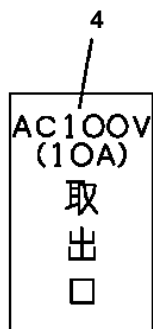
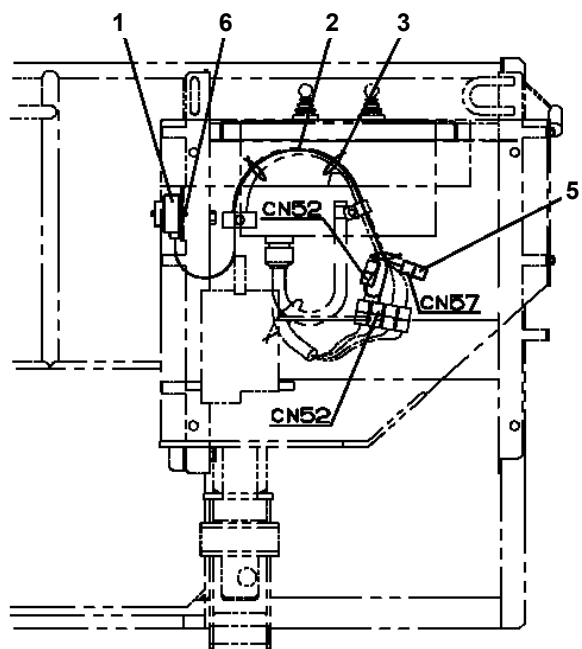
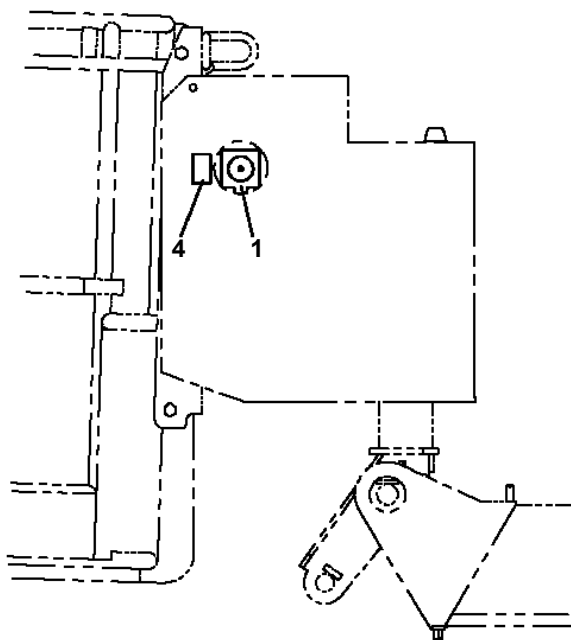
- Please note: If there is no response to CLICKING the link, please download this PDF first and then click on it.

CLICK HERE TO **DOWNLOAD** THE COMPLETE MANUAL

**AT-110-5 42084541556 UPPER,LOWER,ISUZU TPG-NKR85AN-EE5AHY-JM
PB1050175-00 OPE.ASSY,P.T.O. (COUPLING)**



AT-110-5 42084541556 UPPER,LOWER,ISUZU TPG-NKR85AN-EE5AHY-JM
PB1380283-01 POWER SUPPLY (BUCKET)



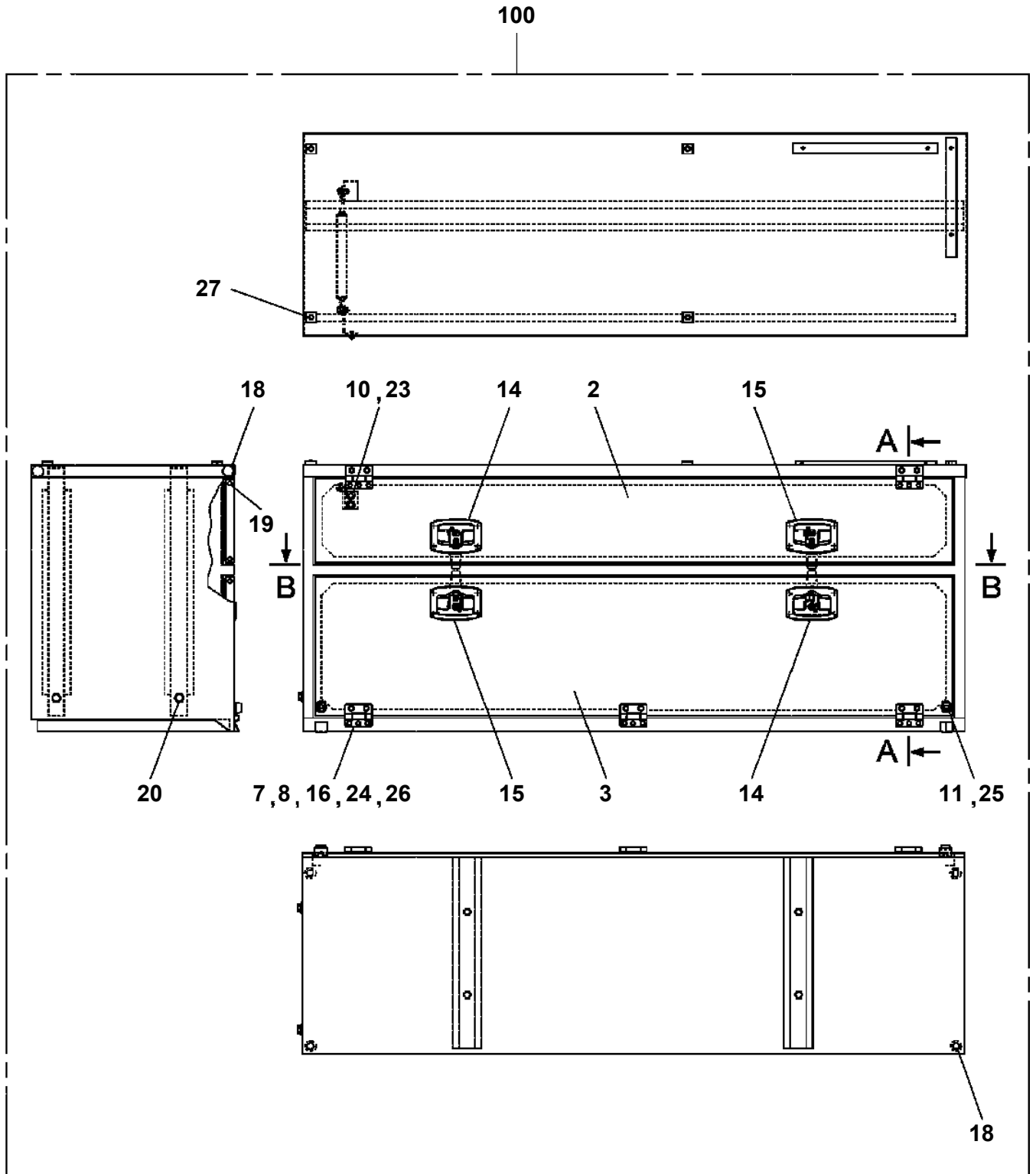
AT-110-5 42084541556 UPPER,LOWER,ISUZU TPG-NKR85AN-EE5AHY-JM

Pos No.	Parts No	Parts Name	Qty	Unit	Technical Data	Serial No (Start)	Serial No (End)
69	90303070801	WASHER,PLAIN	1		8		
70	90183108020	BOLT	1		M8X20		
72	42203040010	PLATE	N				
73	42203040020	PLATE	N				
81	82455106000	NIPPLE,GREASE	1		A-M6F FE		
121	42202414100	COVER	1				
122	42202414200	COVER	1				
123	42202664100	COVER	2				
124	90101208020	BOLT	18		M8X20		
125	42203064100	COVER ASSY	1				
126	42202414800	SUPPORT	1				
127	42202414850	SUPPORT	1				
128	42340233030	COVER	1				
129	42202414500	COVER ASSY	1				
130	42203064200	COVER	2				
131	80192486010	SCREW,MACHINE	8		M6X10		
132	90302040801	WASHER,SPRING	21		8		
133	90303070801	WASHER,PLAIN	18		8		
151	37001004450	SHEAVE ASSY	2				
152	42202670210	PIN	2				
153	42200383620	PLATE	2				
154	90171110022	BOLT	8		M10X22		
155	90302041001	WASHER,SPRING	12		10		
156	90171110050	BOLT	4		M10X50		
157	90303071001	WASHER,PLAIN	4		10		
172	80513006206	BEARING,BALL	2				
190	37002000290	PLATE,SLIDE	2		100X30		
201	42202462510	PLATE,NAME	1				
211	42203064110	PLATE	1				
212	42202674820	BLADE	1				
213	42202674830	PLATE	1				
214	80192484012	SCREW,MACHINE (WITH WASHER)	3		M4X12		
221	42202414550	COVER	1				
222	90101208016	BOLT	3		M8X16		
223	90201200800	NUT	3		M8		
225	42202414510	BLADE	1				
226	42202414520	PLATE	1				
242	80516006010	BEARING,BALL	2				

AT-110-5 42084541556 UPPER,LOWER,ISUZU TPG-NKR85AN-EE5AHY-JM

Pos No.	Parts No	Parts Name	Qty	Unit	Technical Data	Serial No (Start)	Serial No (End)	Remarks
1	42973100200	HARNESS	1					
2	91810132530	FASTENER	10					
3	90302040601	WASHER,SPRING	2		6			
6	34354781710	RELAY (WITH BRACKET)	2					
9	42973100101	HARNESS	1					
30	90101206010	BOLT	2		M6X1.0			

AT-110-5 42084541556 UPPER,LOWER,ISUZU TPG-NKR85AN-EE5AHY-JM
PB5410110-01 BOX,TOOL



AT-110-5 42084541556 UPPER,LOWER,ISUZU TPG-NKR85AN-EE5AHY-JM

Pos No.	Parts No	Parts Name	Qty	Unit	Technical Data	Serial No (Start)	Serial No (End)
1	(*****)	ELEC.ASSY (JACK HORIZONTAL)	1				
4	(*****)	PIPING ASSY	1				
7	(*****)	NAME PLATE ASSY (JACK HORIZONTAL)	1				

AT-110-5 42084541556 UPPER,LOWER,ISUZU TPG-NKR85AN-EE5AHY-JM

Pos No.	Parts No	Parts Name	Qty	Unit	Technical Data	Serial No (Start)	Serial No (End)	Remarks	Pages
1	42321151102	COVER	1						
2	42321112201	COVER	1						
3	82464122900	HINGE	2						
4	90190204010	BOLT	8		M4X10				
5	90303520401	WASHER,PLAIN	12		4				
6	90302510401	WASHER,SPRING	8		4				
7	90201500400	NUT	8		M4				
8	82460025402	CATCH	1						
9	90302040501	WASHER,SPRING	4		5				
10	80175805010	SCREW,MACHINE	4		M5X10				
11	90201200500	NUT	4		M5				
12	42875640010	PLATE	4		T=0.5				
13	80172304008	SCREW,MACHINE	2		M4X8				
14	90201200400	NUT	1		M4				
15	90240200400	NUT,CAP	1		M4				
16	90303070401	WASHER,PLAIN	2		4				
17	42321112010	CHAIN	1						
100	42321151001	COVER ASSY	1						

AT-110-5 42084541556 UPPER,LOWER,ISUZU TPG-NKR85AN-EE5AHY-JM

Pos No.	Parts No	Parts Name	Qty	Unit	Technical Data	Serial No (Start)	Serial No (End)	Remarks	P
1	90730008120	SCREW,SET	1		M8X12				
2	91332207500	BEARING,PLAIN	2						
3	91684007501	PACKING	2						
4	91431206201	RING,BACKUP	2						
5	91002903500	O-RING	1		1B G35				
6	36035920300	PISTON	1						
7	36037110400	ROD	1						
8	36037591000	CYLINDER	1						
9	91002907000	O-RING	1		1B G70				
10	91694006000	PACKING	1						
11	91430206002	RING,BACKUP	1						
12	36036739510	COVER,ROD	1						
13	91660006001	SEAL,DUST	1						
14	91002907500	O-RING	1		1B G75				
15	80801006060	BEARING,PLAIN	1						
16	80612110680	RING,RITAINING	1		AR68				
31	36036739900	PACKING SET	1		60X75				
100	36037590000	CYLINDER ASSY,JACK	1						

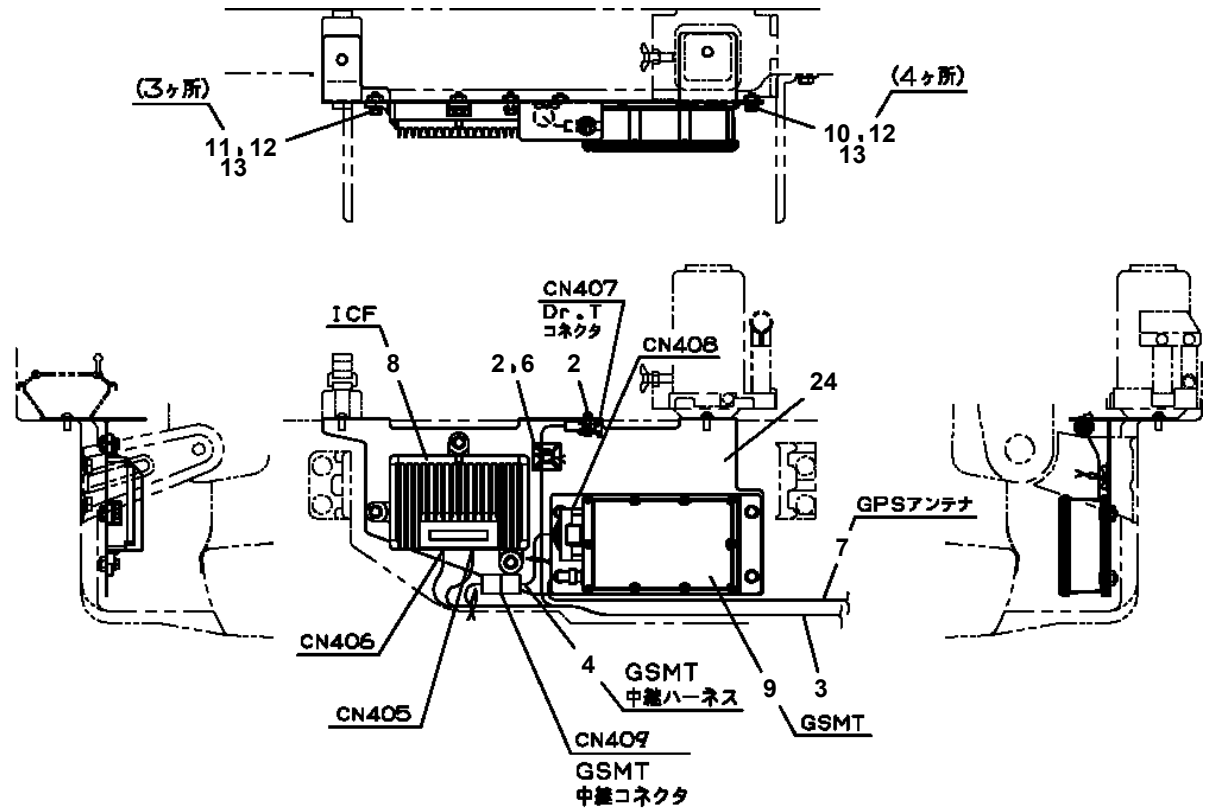
AT-110-5 42084541556 UPPER,LOWER,ISUZU TPG-NKR85AN-EE5AHY-JM

Pos No.	Parts No	Parts Name	Qty	Unit	Technical Data	Serial No (Start)	Ser
1	36081325090	RING,SNAP	1				
2	36081325010	SPACER	1				
3	36081325080	SHIM SET	1				
4	36081325110	BEARING,TAPER ROLLER	1				
5	36081325020	WORM	1				
6	36081325120	BEARING,TAPER ROLLER	1				
7	36080755040	GAUGE,OIL	1				
8	36080235080	WASHER,SEAL	1		M16		
9	80316090060	PLUG	1		KKT PT3/8		
12	91280431931	SEAL,OIL	1				
13	36081325050	CASE,GEAR	1				
14	36081325130	BEARING,BALL(METAL SHIELD TYPE 6210ZZC3)	1				
15	36081325140	BEARING,BALL (RUBBER SEAL TYPE 6210LLU)	1				
16	36080495050	BOLT,SEMS (M10X25,WITH WASHER)	9				
17	36080505080	KEY	1				
18	36081325060	WHEEL,WORM	1				
19	36081325070	CASE,GEAR	1				
20	80500006209	BEARING,BALL	1				
21	80601110450	RING,RITAINING	1		S45		
22	36080015000	PIN	2				
23	82400000478	BREATHER	1				
31	36081615500	GEAR,SPUR	1				
50	36081610000	REDUCER,SWING SPEED	1				

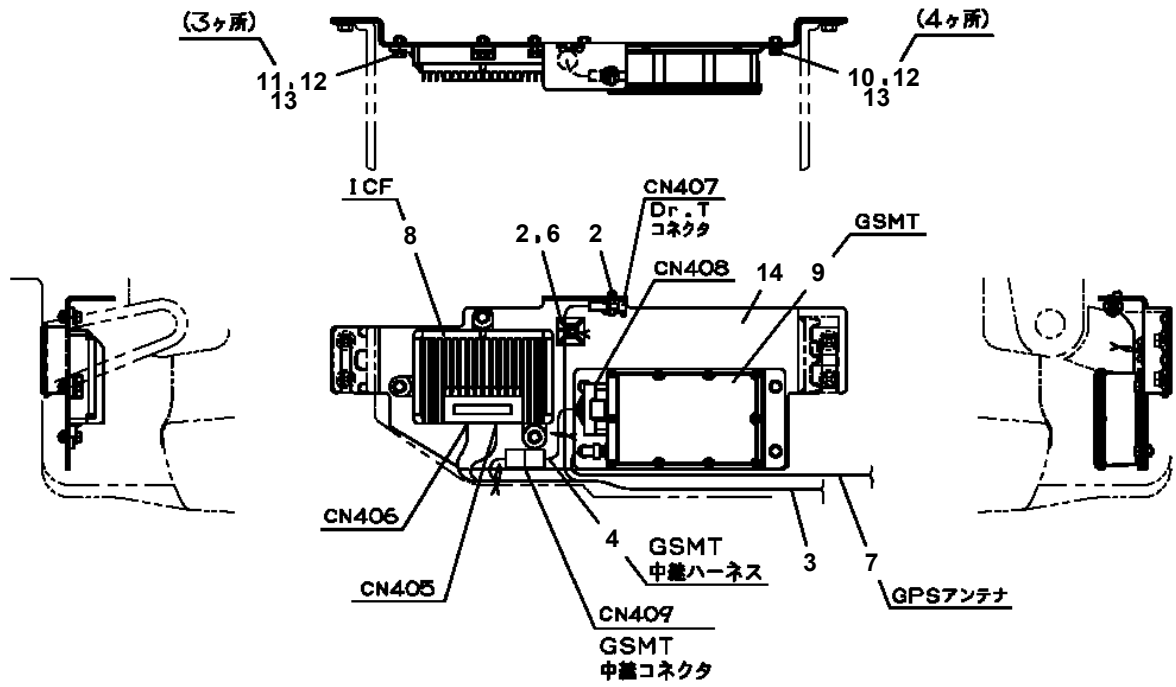
AT-110-5 42084541556 UPPER,LOWER,ISUZU TPG-NKR85AN-EE5AHY-JM

Pos No.	Parts No	Parts Name	Qty	Unit	Technical Data	Serial No (Start)	Serial No (End)	Remarks
1	36160650000	REEL,CORD	1					
2	42733030100	CABLE ASSY	1		L=20100			
3	82198103050	CLIP (WITH CAP/BLACK)	1					
4	90201200500	NUT	2		M5			
5	90302040501	WASHER,SPRING	2		5			
6	90303070501	WASHER,PLAIN	2		5			
7	42505071001	SUPPORT	1					
8	90101208012	BOLT	2		M8X12			
9	90302040801	WASHER,SPRING	2		8			
10	42505072000	CABLE	1		L=2000			
11	42698150300	INSULATOR	4					
12	80172304010	SCREW,MACHINE	5		M4X10			
13	90302040401	WASHER,SPRING	5		4			
14	90303070401	WASHER,PLAIN	5		4			
15	80173305010	SCREW,MACHINE	1					
16	90201200400	NUT	1		M4			

AT-110-5 42084541556 UPPER,LOWER,ISUZU TPG-NKR85AN-EE5AHY-JM
 PE5020677-03 ELEC.ASSY (TELEMATICS)

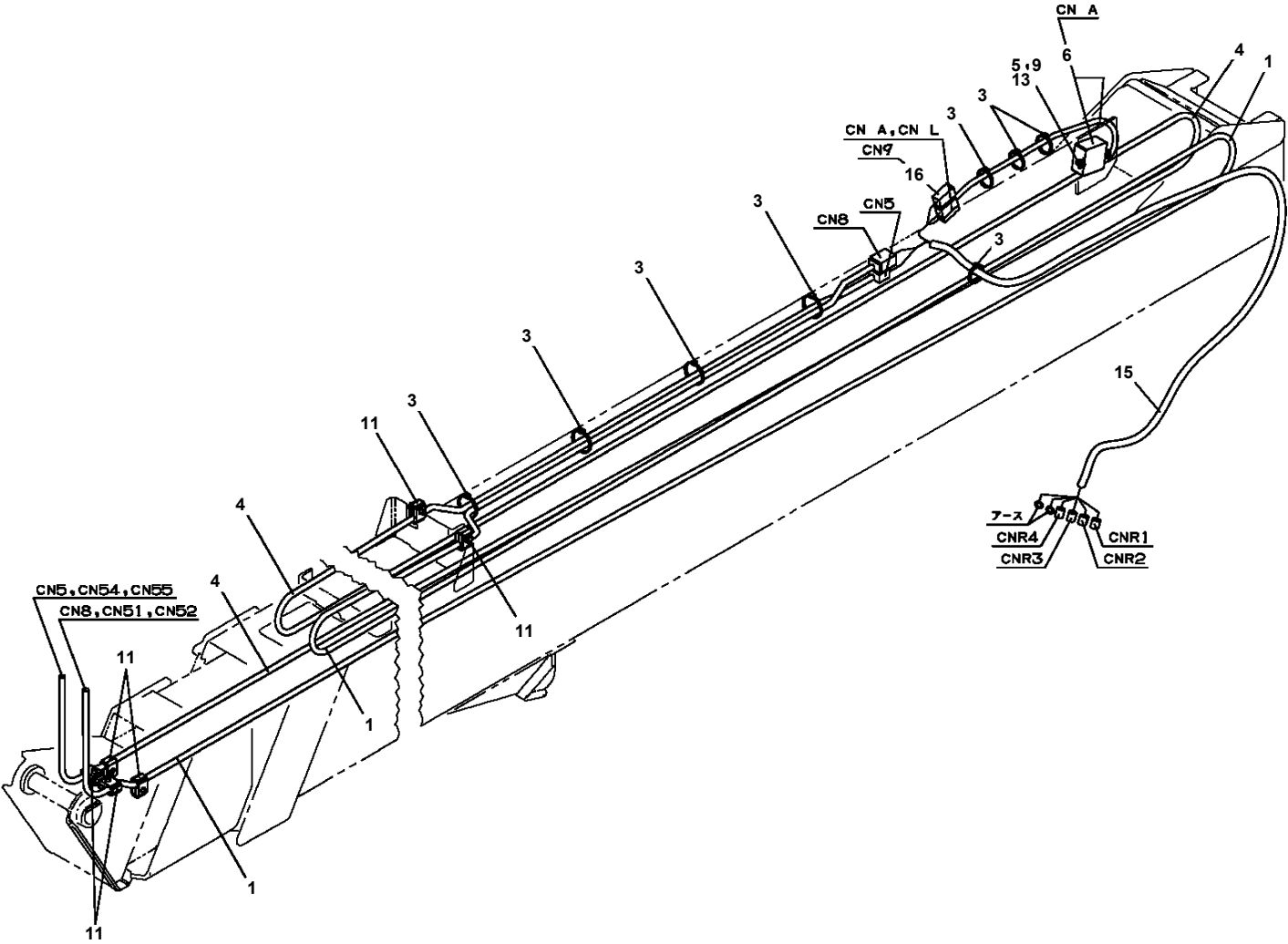


F



E

**AT-110-5 42084541556 UPPER,LOWER,ISUZU TPG-NKR85AN-EE5AHY-JM
PE5050008-00 ELEC.ASSY,BOOM**



AT-110-5 42084541556 UPPER,LOWER,ISUZU TPG-NKR85AN-EE5AHY-JM

Pos No.	Parts No	Parts Name	Qty	Unit	Technical Data	Serial No (Start)	Serial No
1	36171980000	CONTROLLER (ASSY ONLY)	1				
2	42655330200	SUPPORT	1				
3	90101206025	BOLT	4		M6X25		
4	80192486016	SCREW,MACHINE	6		M6X16		
5	42655451000	SWITCH ASSY	1				
6	42655450100	HARNESS	1				
7	82100002017	CLAMP	3		WR30		
8	82100002016	CLAMP	1		WR25		
10	91850400601	CLAMP	10				
14	44430680200	BUZZER ASSY (WITH HARNESS)	1				
15	(*****)	RELAY ASSY	1				
16	80192484016	SCREW,MACHINE	6		M4X16		
18	82100002019	CLAMP	2		WR40		
19	90101208014	BOLT	3		M8X14		
21	82100002009	CLAMP	1		WRC12		
23	82100002007	CLAMP	1		WRC10		
24	90303070801	WASHER,PLAIN	1		8		
25	90302040801	WASHER,SPRING	15		8		
26	90201200800	NUT	9		M8		
27	82100002006	CLAMP	2		WR10		
28	82108501140	SWITCH	1				
29	90280200600	NUT,FLANGE	2		M6		
33	90101208025	BOLT	1		M8X25		
34	91810132530	FASTENER	30				
35	90101208018	BOLT	4		M8X18		
36	42654872002	BOX ASSY	1				
37	42654870200	COVER	1				
38	90201200600	NUT	4		M6		
39	90302040601	WASHER,SPRING	6		6		
40	90303070601	WASHER,PLAIN	8		6		
41	42655330104	HARNESS (FRAME)	1				
61	42900001200	COVER	1				
62	91810130240	FASTENER	1				
63	82467300104	PLUG	3				
64	42353952100	SWITCH ASSY (WITH HARNESS)	1				
65	42354541400	SWITCH ASSY (WITH HARNESS,3 SWITCH)	1				
66	90303070301	WASHER,PLAIN	2		3		
67	42809631200	LAMP ASSY (RED,WITH HARNESS)	1				
68	42353950100	SWITCH ASSY (WITH HARNESS)	1				
69	82154201010	METER,HOUR	1				
70	80172303010	SCREW,MACHINE	2		M3X10		
71	90302040301	WASHER,SPRING	2		3		
72	42355641100	SWITCH ASSY	1				
82	82400000309	GROMMET	1		L=1000		
97	42355641010	COVER	1				
111	42355641210	BUTTON	1				

AT-110-5 42084541556 UPPER,LOWER,ISUZU TPG-NKR85AN-EE5AHY-JM

Pos No.	Parts No	Parts Name	Qty	Unit	Technical Data	Serial No (Start)	Serial No (End)
1	36132400001	DETECTOR ASSY,LENGTH (BOOM)	1				
2	42350071000	ROLLER ASSY	1				
3	42353100600	ROLLER ASSY	1				
4	90303070601	WASHER,PLAIN	1		6		
5	80620210060	PIN,SNAP	1				
6	91810132530	FASTENER	2				
7	90180206016	BOLT,BUTTON	4		M6X16		
8	90302040601	WASHER,SPRING	4		6		
10	89630101000	HOSE,VINYL	1		4X6,1M		
31	42360030040	SUPPORT	1				
32	37001102350	ROLLER	2				
33	37000302060	SPACER	2		L=11.2		
35	90201201000	NUT	2		M10		
36	90302041001	WASHER,SPRING	2		10		
37	90303071001	WASHER,PLAIN	2		10		
41	42351120200	SUPPORT	1				

AT-110-5 42084541556 UPPER,LOWER,ISUZU TPG-NKR85AN-EE5AHY-JM

Pos No.	Parts No	Parts Name	Qty	Unit	Technical Data	Serial No (Start)	Serial No (End)	Remarks	Pages
1	42739962100	VIEW SYSTEM	1						000069
2	91810130240	FASTENER	10						

AT-110-5 42084541556 UPPER,LOWER,ISUZU TPG-NKR85AN-EE5AHY-JM

Pos No.	Parts No	Parts Name	Qty	Unit	Technical Data	Serial No (Start)	Serial No (End)	Remarks	I
1	(*****)	VIEW SYSTEM (MONITOR)	1						0
2	(*****)	VIEW SYSTEM (CAMERA)	1						0

AT-110-5 42084541556 UPPER,LOWER,ISUZU TPG-NKR85AN-EE5AHY-JM

Pos No.	Parts No	Parts Name	Qty	Unit	Technical Data	Serial No (Start)	Serial No (End)	Remarks	Pages
100	42356790200	HARNESS	1						

AT-110-5 42084541556 UPPER,LOWER,ISUZU TPG-NKR85AN-EE5AHY-JM

Pos No.	Parts No	Parts Name	Qty	Unit	Technical Data	Serial No (Start)	Serial No (End)	Remarks	Pages
100	42971491100	HARNESS	1						

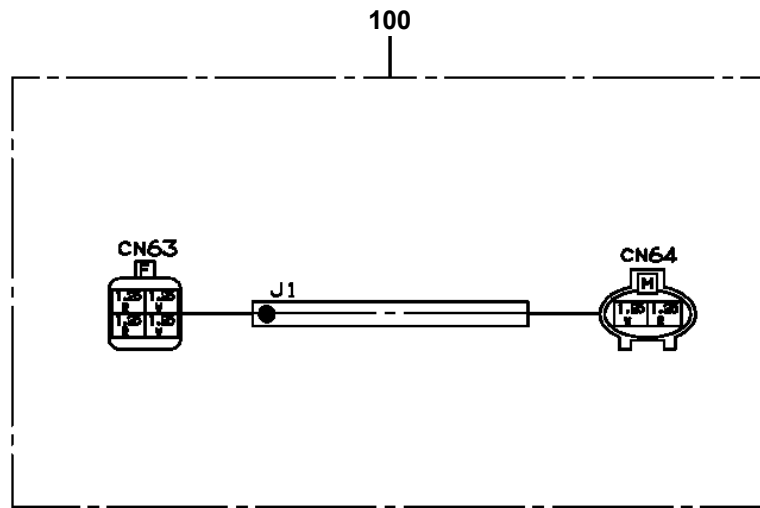
AT-110-5 42084541556 UPPER,LOWER,ISUZU TPG-NKR85AN-EE5AHY-JM

Pos No.	Parts No	Parts Name	Qty	Unit	Technical Data	Serial No (Start)	Serial No (End)	Remarks	Pages
100	42973100101	HARNESS	1						

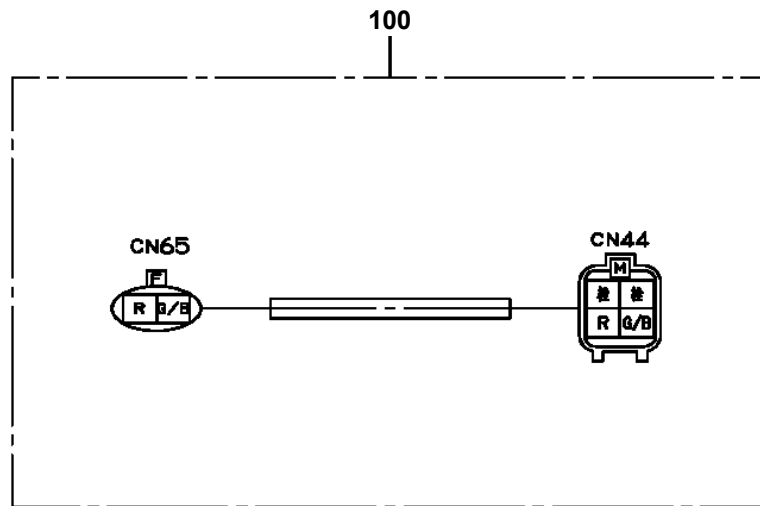
AT-110-5 42084541556 UPPER,LOWER,ISUZU TPG-NKR85AN-EE5AHY-JM

Pos No.	Parts No	Parts Name	Qty	Unit	Technical Data	Serial No (Start)	Serial No (End)	Remarks	Pages
100	42654790311	HARNESS	1						

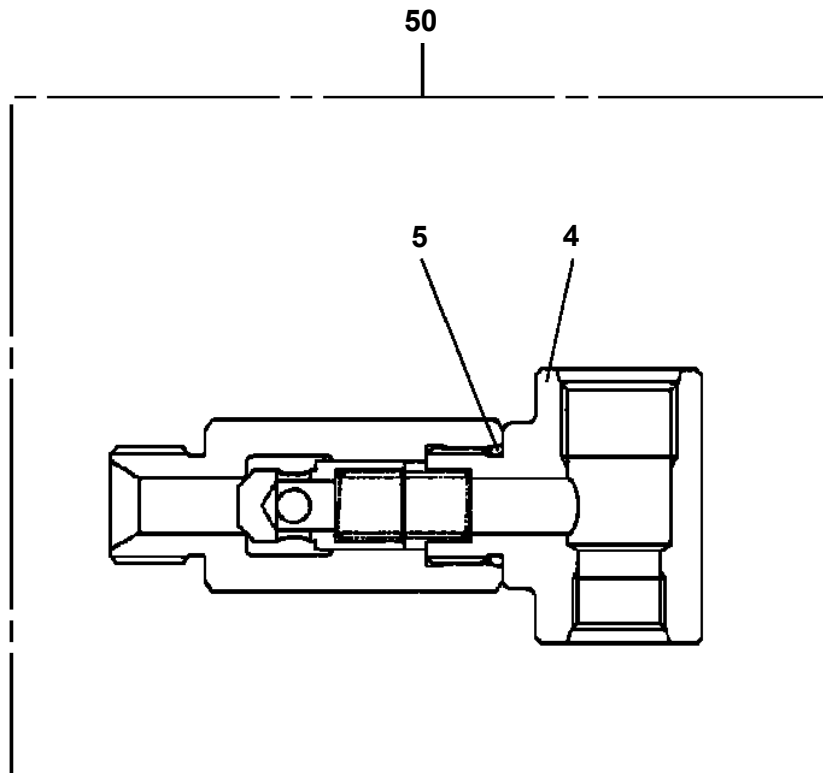
AT-110-5 42084541556 UPPER,LOWER,ISUZU TPG-NKR85AN-EE5AHY-JM
PH5034168-00 HARNESS



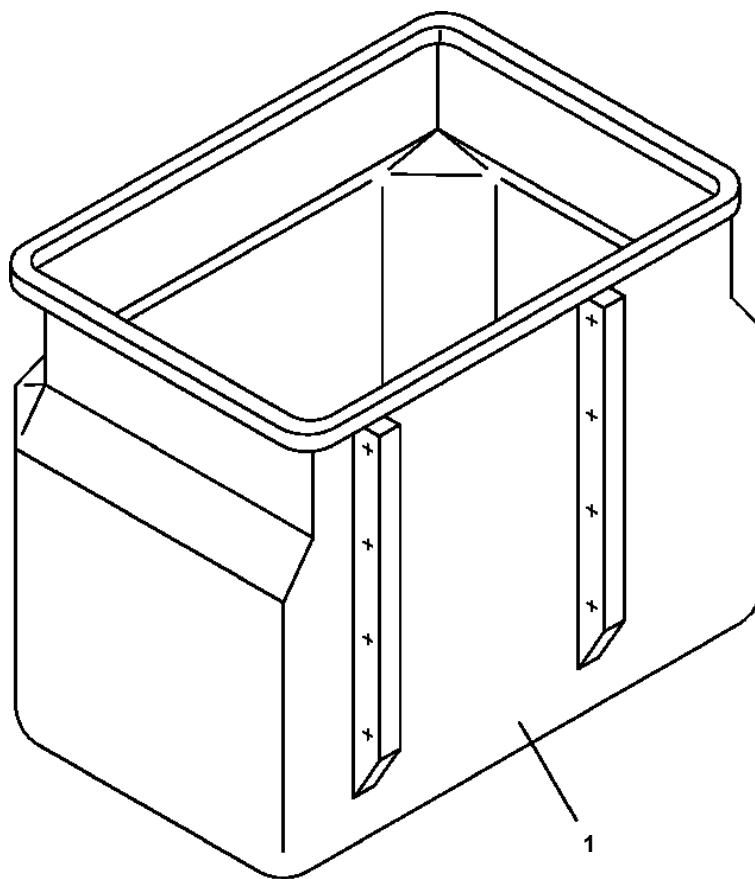
AT-110-5 42084541556 UPPER,LOWER,ISUZU TPG-NKR85AN-EE5AHY-JM
PH5034182-00 HARNESS



**AT-110-5 42084541556 UPPER,LOWER,ISUZU TPG-NKR85AN-EE5AHY-JM
PI1140167-00 VALVE,CHECK (UZUMAKI)**

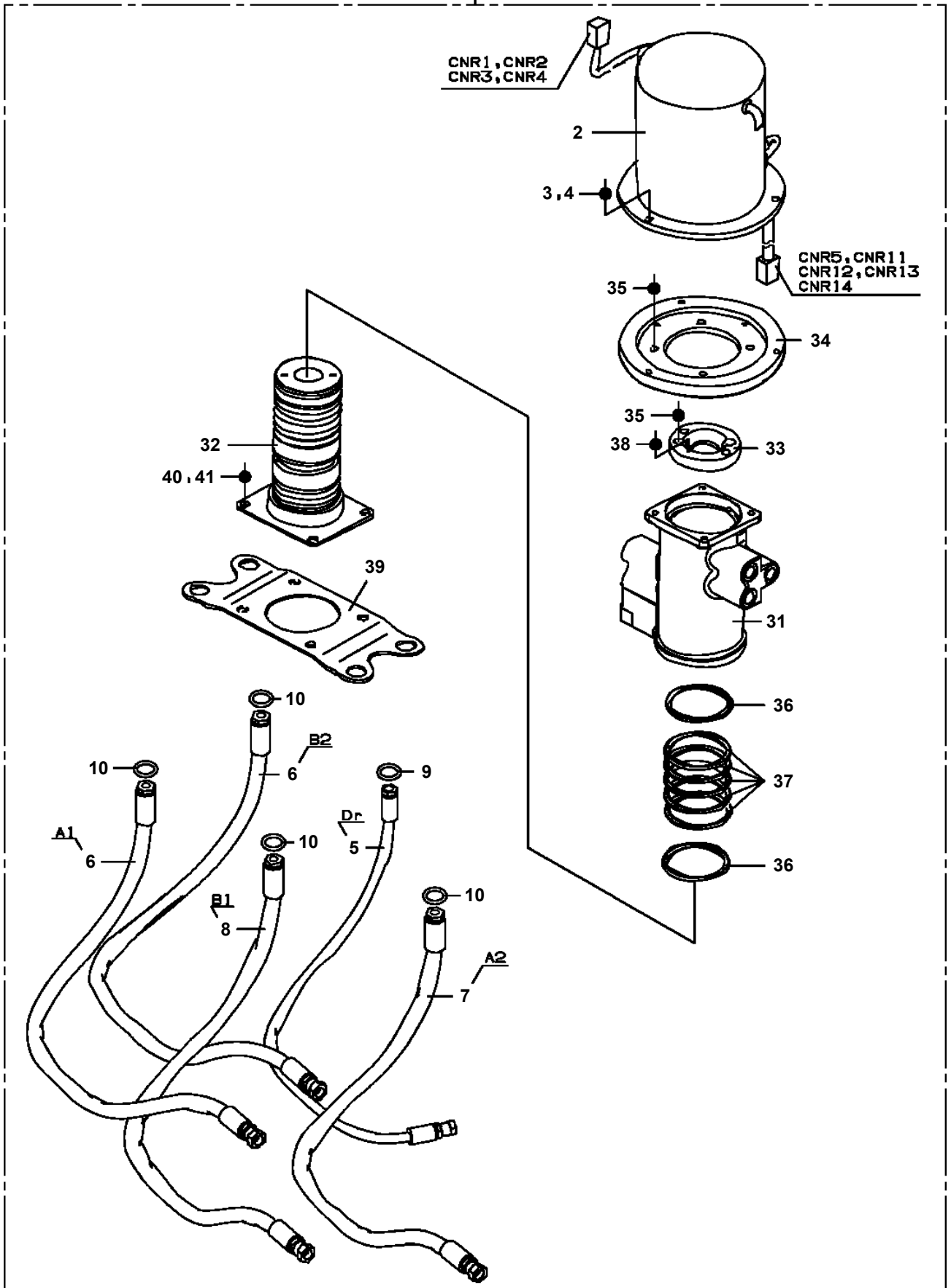


**AT-110-5 42084541556 UPPER,LOWER,ISUZU TPG-NKR85AN-EE5AHY-JM
PJ3010199-00 BUCKET (WHITE/WITHOUT BOSS)**

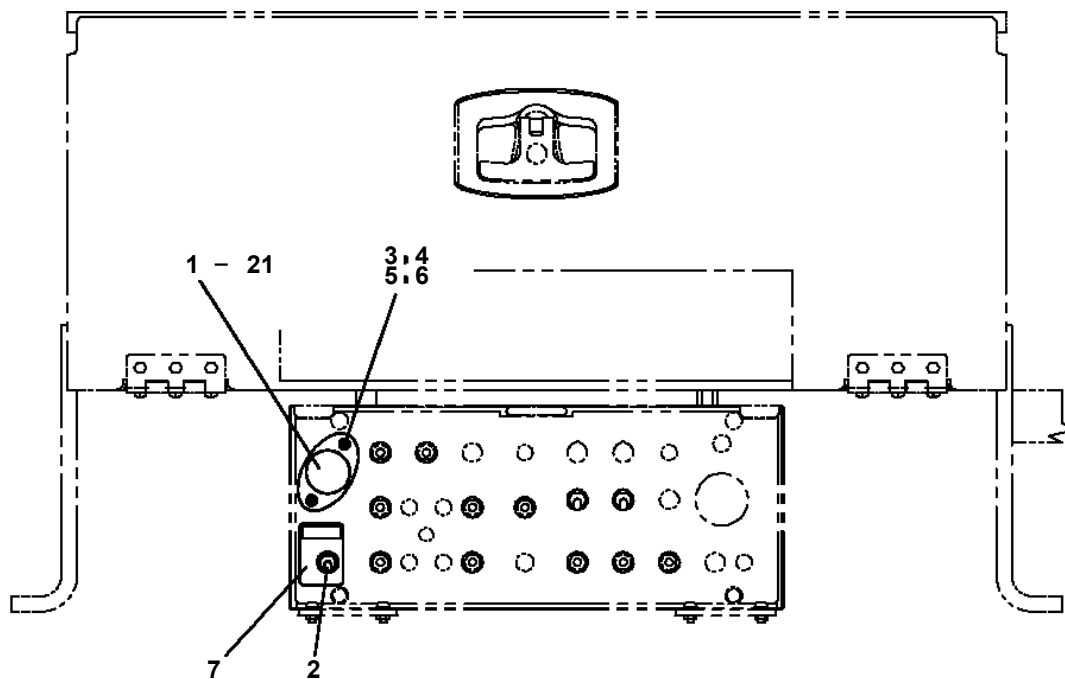


AT-110-5 42084541556 UPPER,LOWER,ISUZU TPG-NKR85AN-EE5AHY-JM
PJ5090039-00 JOINT ASSY,SWIVEL

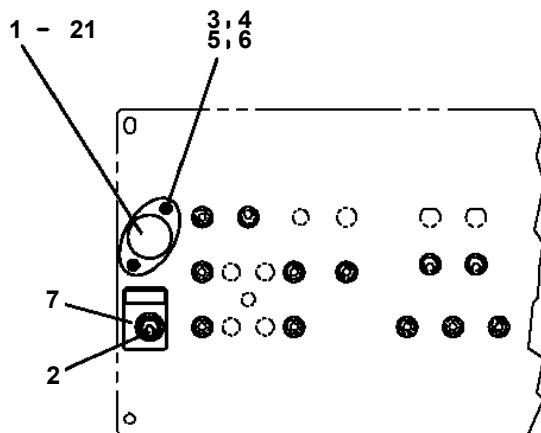
100



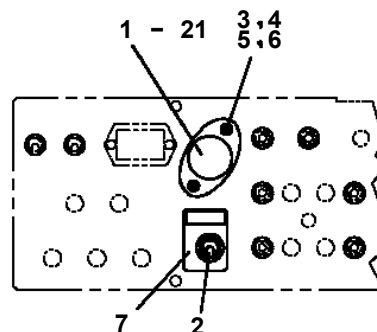
AT-110-5 42084541556 UPPER,LOWER,ISUZU TPG-NKR85AN-EE5AHY-JM
 PL5020079-01 LAMP ASSY (LOWER CONTROLS)



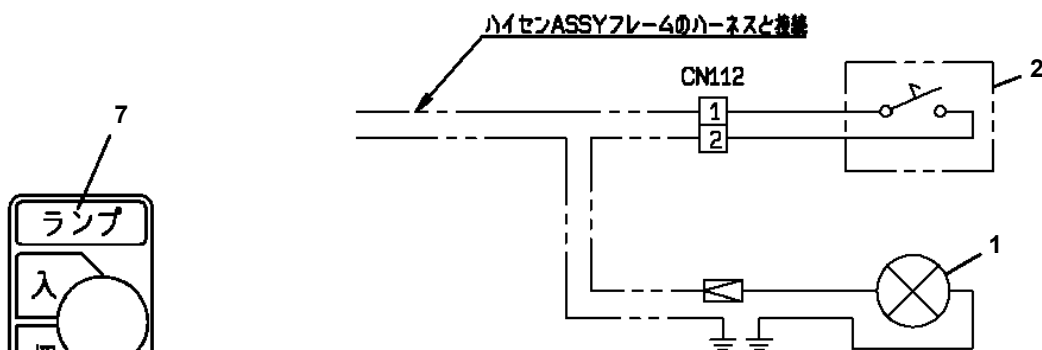
後端操作部



後端操作部 L仕様の場合



後端操作部 D仕様の場合



回路図

CLICK HERE TO **DOWNLOAD** THE COMPLETE MANUAL

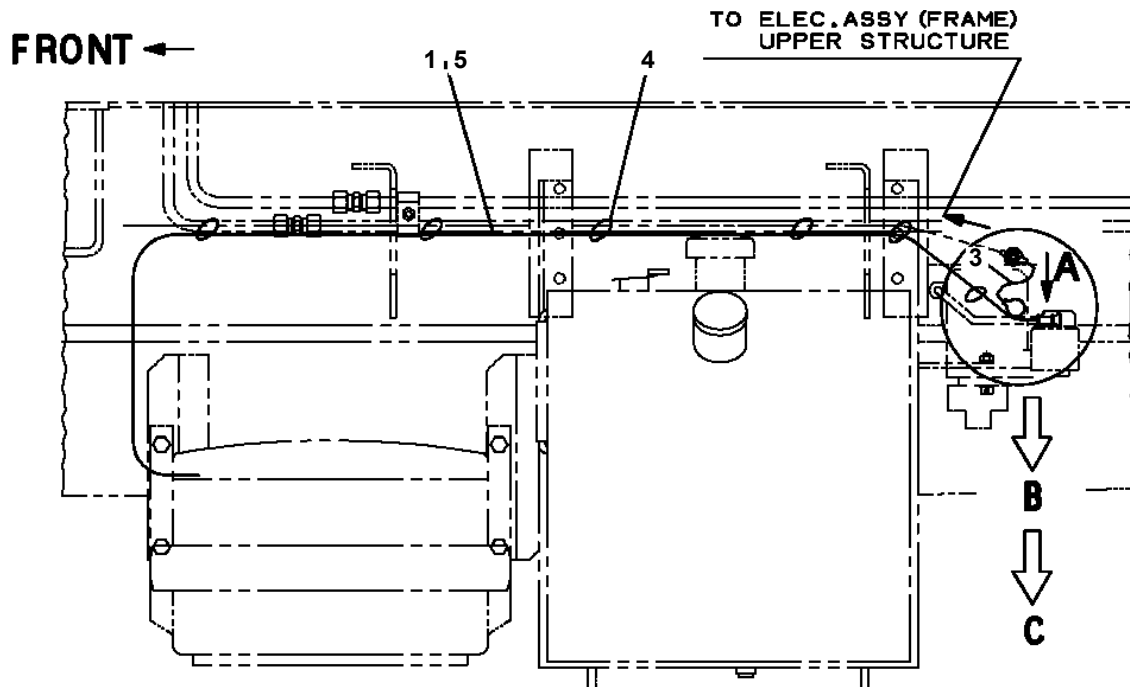
- Thank you very much for reading the preview of the manual.
- You can download the complete manual from: www.heydownloads.com by clicking the link below



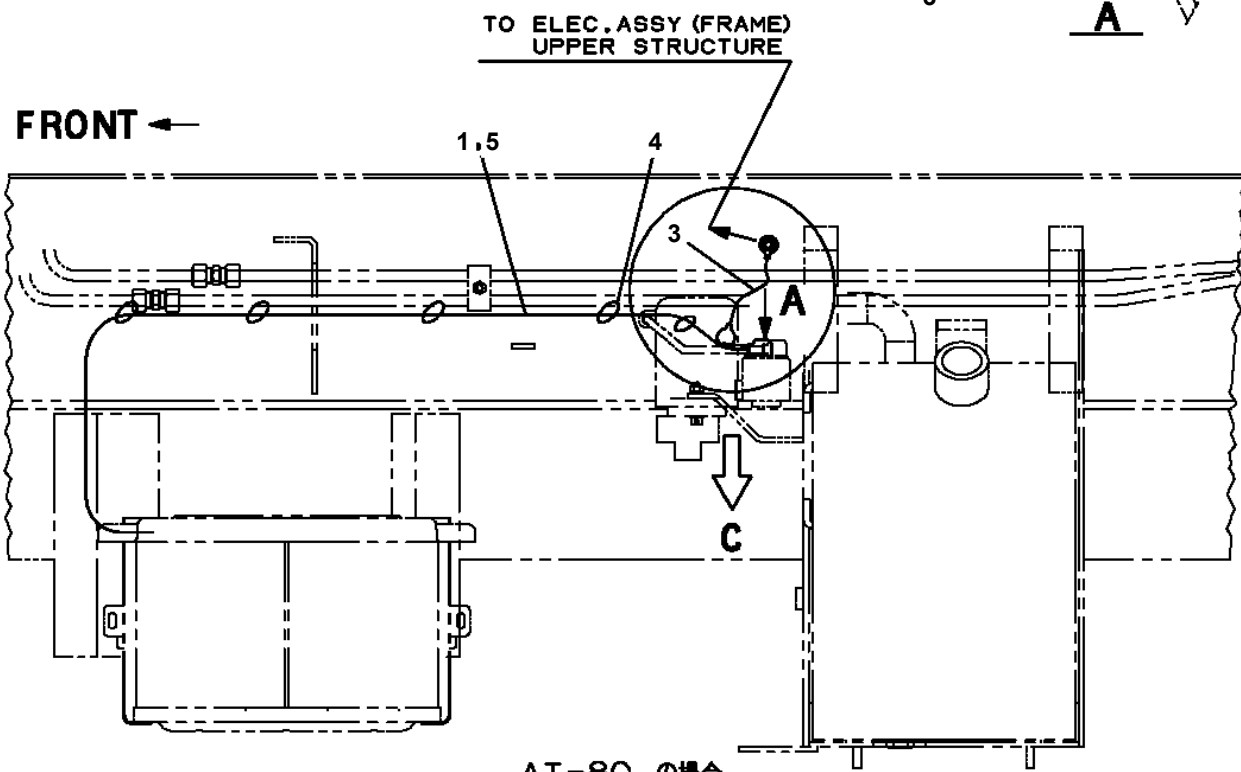
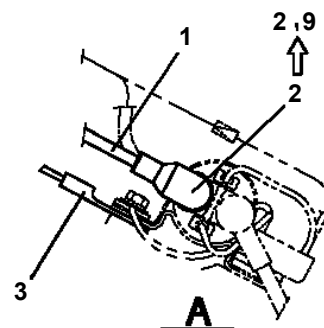
- Please note: If there is no response to CLICKING the link, please download this PDF first and then click on it.

CLICK HERE TO **DOWNLOAD** THE COMPLETE MANUAL

AT-110-5 42084541556 UPPER,LOWER,ISUZU TPG-NKR85AN-EE5AHY-JM
 PN1013988-05 ELEC.ASSY (BATTERY & EMERGENCY PUMP)



AT-100-4, AT-100-5
 AT-110-4, AT-110-5
 AT-121-2, AT-121-3 の場合

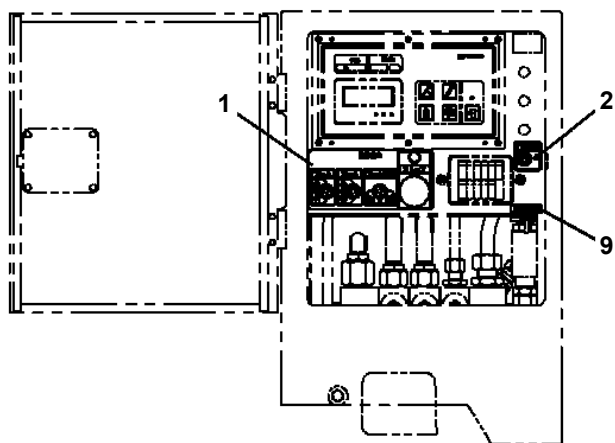
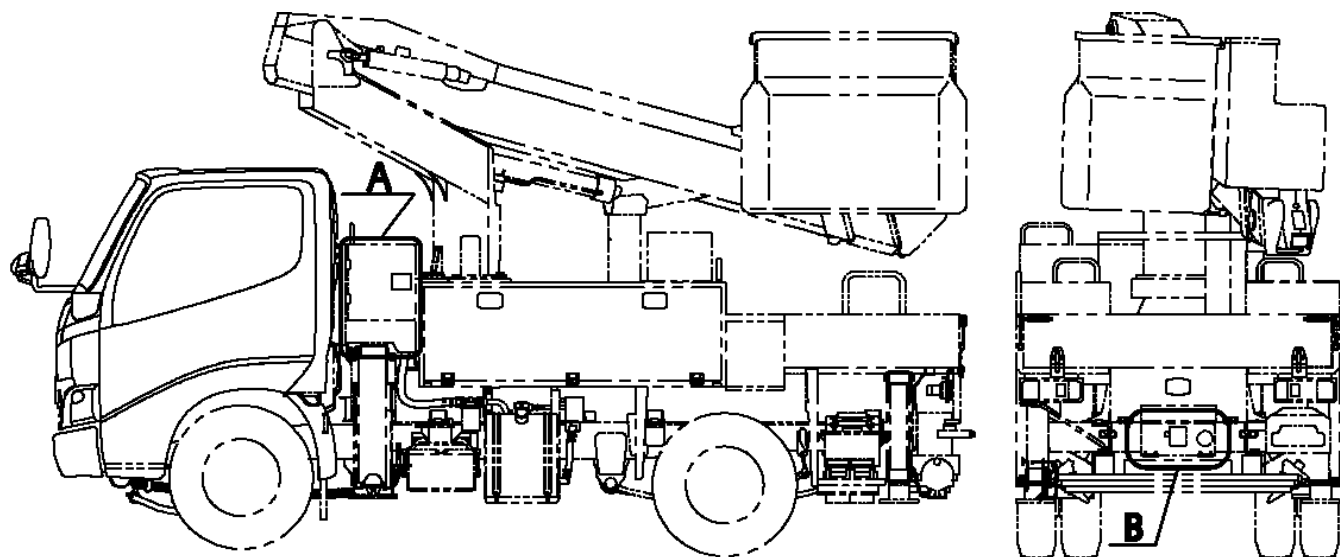


AT-80 の場合

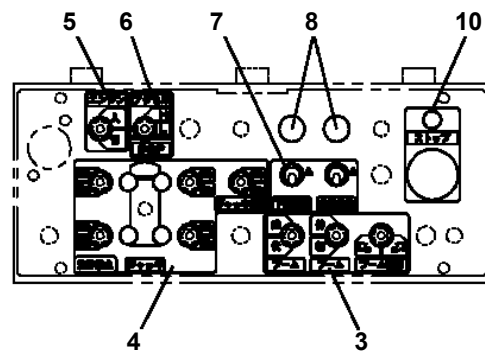
AT-110-5 42084541556 UPPER,LOWER,ISUZU TPG-NKR85AN-EE5AHY-JM

Pos No.	Parts No	Parts Name	Qty	Unit	Technical Data	Serial No (Start)	Serial No (End)	Remarks	Pages
5	36160017550	HANDLE	1						
6	36160655020	SHAFT	1						
7	36160017560	WASHER,PLAIN	1						
8	36160655050	PLATE (RING)	1						
10	36160017590	PLATE (CONTACT)	1						
50	36160650000	REEL,CORD	1						

AT-110-5 42084541556 UPPER,LOWER,ISUZU TPG-NKR85AN-EE5AHY-JM
PN5010701-00 NAME PLATE ASSY (OPERATION)



A
扉を開いた状態



B
扉を開いた状態

AT-110-5 42084541556 UPPER,LOWER,ISUZU TPG-NKR85AN-EE5AHY-JM

Pos No.	Parts No	Parts Name	Qty	Unit	Technical Data	Serial No (Start)	Serial
1	34398867400	PLATE,NAME (THIS MACHINE IS JAPAN SPEC)	1				
2	34353831200	PLATE,NAME (TELEMATICS)	1				

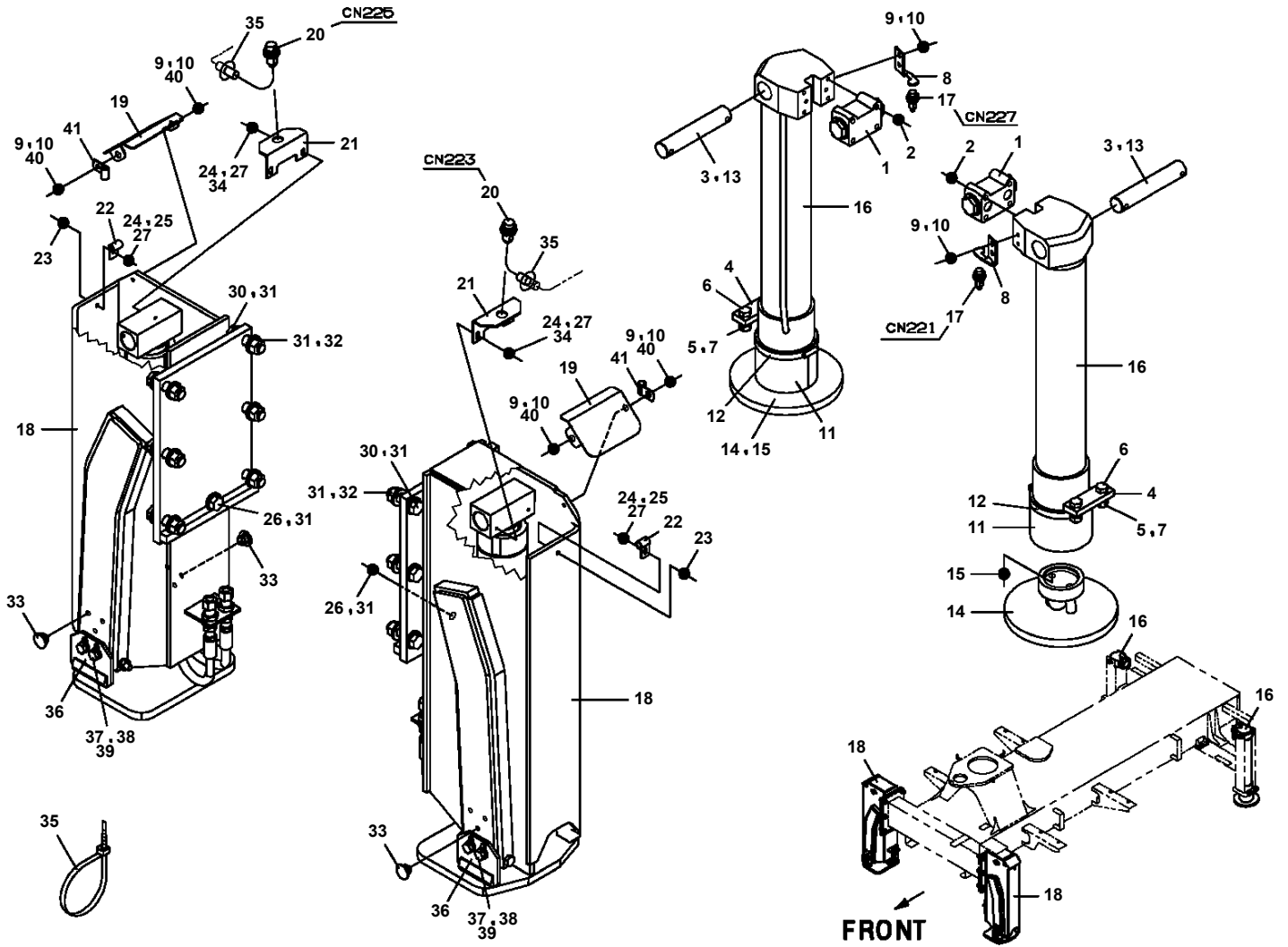
AT-110-5 42084541556 UPPER,LOWER,ISUZU TPG-NKR85AN-EE5AHY-JM

Pos No.	Parts No	Parts Name	Qty	Unit	Technical Data	Serial
1	(***** *****)	NAME PLATE ASSY (HEIGHT,CAPACITY,AIR/MITSUBISHI)	1			
	(***** *****)	PLATE ASSY,NAME (VEHICLE HEIGHT,CAPACITY,AIR PRESSURE)	1			
2	(***** *****)	NAME PLATE ASSY (TELEMATICS)	2			

AT-110-5 42084541556 UPPER,LOWER,ISUZU TPG-NKR85AN-EE5AHY-JM

Pos No.	Parts No	Parts Name	Qty	Unit	Technical Data	Serial No (Start)	Serial No (End)	Rema
1	42333207510	CASE	1					
2	42332672003	OPE.ASSY (LEVER,CONTROL)	1					
3	82109323002	SWITCH	1					
4	42333207550	PACKING	1					
5	90187706010	BOLT,HEXAGON SOCKET	4		M6X10			
6	42332502300	CASE (BOTTOM)	1					
8	42333217530	HARNESS ASSY	1					
9	42332502701	COVER (BOARD)	1					
10	82161324080	RELAY	3					
12	42332507610	SPACER	6					
13	80192383008	SCREW,MACHINE	6		M3X8			
14	80192885012	SCREW,MACHINE	13		M5X12			
15	90201200500	NUT	1		M5			
16	90303070501	WASHER,PLAIN	1		5			
17	90302040501	WASHER,SPRING	1		5			
18	42332507620	SPACER	3					
19	42332507630	COVER (RELAY)	1					
107	42332507573	BOARD,CIRCUIT (WITH DATA)	1					
111	82109323004	KNOB (BLACK)	1					
112	82109323005	BOOT (BELLOWS)	1					
200	42333202002	OPE.ASSY	1					

**AT-110-5 42084541556 UPPER,LOWER,ISUZU TPG-NKR85AN-EE5AHY-JM
PO5270294-00 OUTRIGGER ASSY**



AT-110-5 42084541556 UPPER,LOWER,ISUZU TPG-NKR85AN-EE5AHY-JM

Pos No.	Parts No	Parts Name	Qty	Unit	Technical Data	Serial No (Start)	Serial No (End)	Remarks	Pa
1	42508772100	FITTING	2						
2	42508772210	ORIFICE	2		M12,1.8				
3	36672630000	FILTER (WITH O-RING)	2						
4	37000924410	JOINT	2		PF1/4-PF1/4				
5	91002801100	O-RING	2		1B P11				
6	42644720400	ORIFICE	2		M8,1.8				
24	91002801100	O-RING	2		1B P11				

AT-110-5 42084541556 UPPER,LOWER,ISUZU TPG-NKR85AN-EE5AHY-JM

Pos No.	Parts No	Parts Name	Qty	Unit	Technical Data	Serial No (Start)	Serial No (End)	Remarks
1	42654793200	SUPPORT	2					
2	90101208014	BOLT	4		M8X14			
3	90302040801	WASHER,SPRING	4		8			
4	90101206010	BOLT	14		M6X1.0			
5	90302040601	WASHER,SPRING	14		6			
6	34354781710	RELAY (WITH BRACKET)	14					
7	82161324080	RELAY	1					
8	80197585012	SCREW,MACHINE	1		M5X12			
9	82161300010	RELAY	1					
10	91810132530	FASTENER	5					

AT-110-5 42084541556 UPPER,LOWER,ISUZU TPG-NKR85AN-EE5AHY-JM

Pos No.	Parts No	Parts Name	Qty	Unit	Technical Data	Serial No (Start)	Serial No (End)	Remarks	Pages
1	42972961000	SUPPORT ASSY	1						
2	90101210020	BOLT	2		M10X20				
3	90302041001	WASHER,SPRING	3		10				
4	90101210030	BOLT	1		M10X30				
5	90303071001	WASHER,PLAIN	3		10				
6	90201201000	NUT	1		M10				
7	42972640200	SUPPORT	1						
21	42971191200	SUPPORT	1						
22	37000127600	PIN	2						
23	80136350036	PIN,SPLIT	4		5X36				
24	42737771500	SUPPORT	1						
25	37001110060	ROLLER	2						
26	42737771400	SUPPORT	1						
27	90101208018	BOLT	2		M8X18				
28	80824003540	BEARING,PLAIN	1						
29	42972961100	SUPPORT	1						
30	90101210016	BOLT	2		M10X16				
31	90302040801	WASHER,SPRING	2		8				
32	42737771300	PIN	1						
33	90303072001	WASHER,PLAIN	8		20				
34	90302041001	WASHER,SPRING	2		10				

AT-110-5 42084541556 UPPER,LOWER,ISUZU TPG-NKR85AN-EE5AHY-JM

Pos No.	Parts No	Parts Name	Qty	Unit	Technical Data	Se
1	82109833232	SWITCH	1			
2	82100002220	CABLE	4	M		
3	82100002173	CONNECTOR	1			
50	42509160000	SWITCH ASSY (ELEC.BOOSTER, REMOTE:3M,NANABOSI,KASUGA)	1			

AT-110-5 42084541556 UPPER,LOWER,ISUZU TPG-NKR85AN-EE5AHY-JM

Pos No.	Parts No	Parts Name	Qty	Unit	Technical Data	Serial No (Start)	Serial No (End)	Remarks
1	36103061000	TANK	1					
2	53156005000	BREATHER ASSY (OB-10T)	1					
3	36102120010	CAP	1					
4	91001104800	O-RING	1		1A P48			
5	37002516440	HOSE	1		L=140			
6	91803880040	CLIP	2		D=10-12.2			
7	36102790010	PLUG	1					
8	90303392001	WASHER	1		M20			
22	53156005011	ELEMENT	1					
23	53156005030	PLATE (WITH PACKING)	1					
24	53156005040	PACKING	1					
50	36103060000	TANK ASSY,OIL	1					

AT-110-5 42084541556 UPPER,LOWER,ISUZU TPG-NKR85AN-EE5AHY-JM

Pos No.	Parts No	Parts Name	Qty	Unit	Technical Data	Se
1	42470980100	SWITCH,PUSH	1			
2	82100002220	CABLE	8	M		
3	82100002173	CONNECTOR	1			
10	42470984000	SWITCH BOX (ELECTRIC BOOSTER, 8M,NANABOSI,SINKOU DENKI)	1			

AT-110-5 42084541556 UPPER,LOWER,ISUZU TPG-NKR85AN-EE5AHY-JM

Pos No.	Parts No	Parts Name	Qty	Unit	Technical Data	Serial No (Start)	Serial No (End)	Remarks
1	90101208016	BOLT	2		M8X16			
	90101208016	BOLT	2		M8X16			
2	90302040801	WASHER,SPRING	2		8			
	90302040801	WASHER,SPRING	2		8			
3	36630910062	NEEDLE	1					
	36630910062	NEEDLE	1					
4	36630910031	HOLDER	1					
	36630910031	HOLDER	1					
5	91002801000	O-RING	1		1B P10			
	91002801000	O-RING	1		1B P10			
6	91410001000	RING,BACKUP	1		P10			
	91410001000	RING,BACKUP	1		P10			
7	36636340010	BODY	1					
	36636340010	BODY	1					
8	52255101000	SPRING	1					
	52255101000	SPRING	1					
9	36630910050	POPPET	1					
	36630910050	POPPET	1					
10	91002801400	O-RING	1		1B P14			
	91002801400	O-RING	1		1B P14			
11	36620030050	PLUG	1					
	36620030050	PLUG	1					
12	82400000350	KNOB	1					
	82400000350	KNOB	1					
13	37000508510	PLATE	1					
	37000508510	PLATE	1					
14	80172303006	SCREW,MACHINE	1		M3X6			
	80172303006	SCREW,MACHINE	1		M3X6			
15	91002800800	O-RING	1		1B P8			
	91002800800	O-RING	1		1B P8			
100	36636340001	VALVE ASSY,SELECTOR	1					
	36636340001	VALVE ASSY,SELECTOR	1					

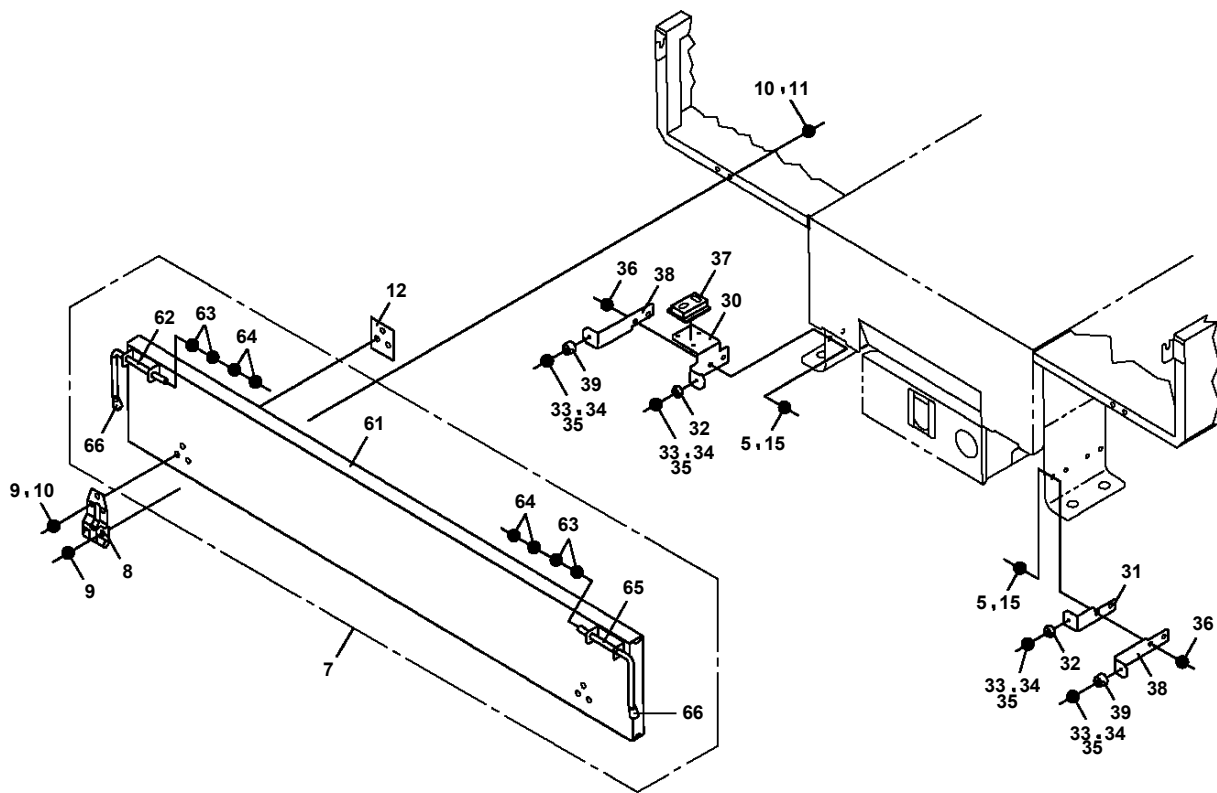
AT-110-5 42084541556 UPPER,LOWER,ISUZU TPG-NKR85AN-EE5AHY-JM

Pos No.	Parts No	Parts Name	Qty	Unit	Technical Data	Serial No (Start)	Serial No (End)	Rem
1	42460015010	BAG,TOOL	1					
2	91991510003	HEXAGON BARWRENCH (G3)	1					
3	91991510004	HEXAGON BARWRENCH (G4)	1					
4	91991510005	HEXAGON BARWRENCH (G5)	1					
5	91991510006	HEXAGON BARWRENCH (G6)	1					
6	91991510008	HEXAGON BARWRENCH (G8)	1					
7	91991510010	HEXAGON BARWRENCH (G10)	1					
8	91991441311	SPANNER	1		13X11			
50	42473931000	TOOLS	1					

AT-110-5 42084541556 UPPER,LOWER,ISUZU TPG-NKR85AN-EE5AHY-JM

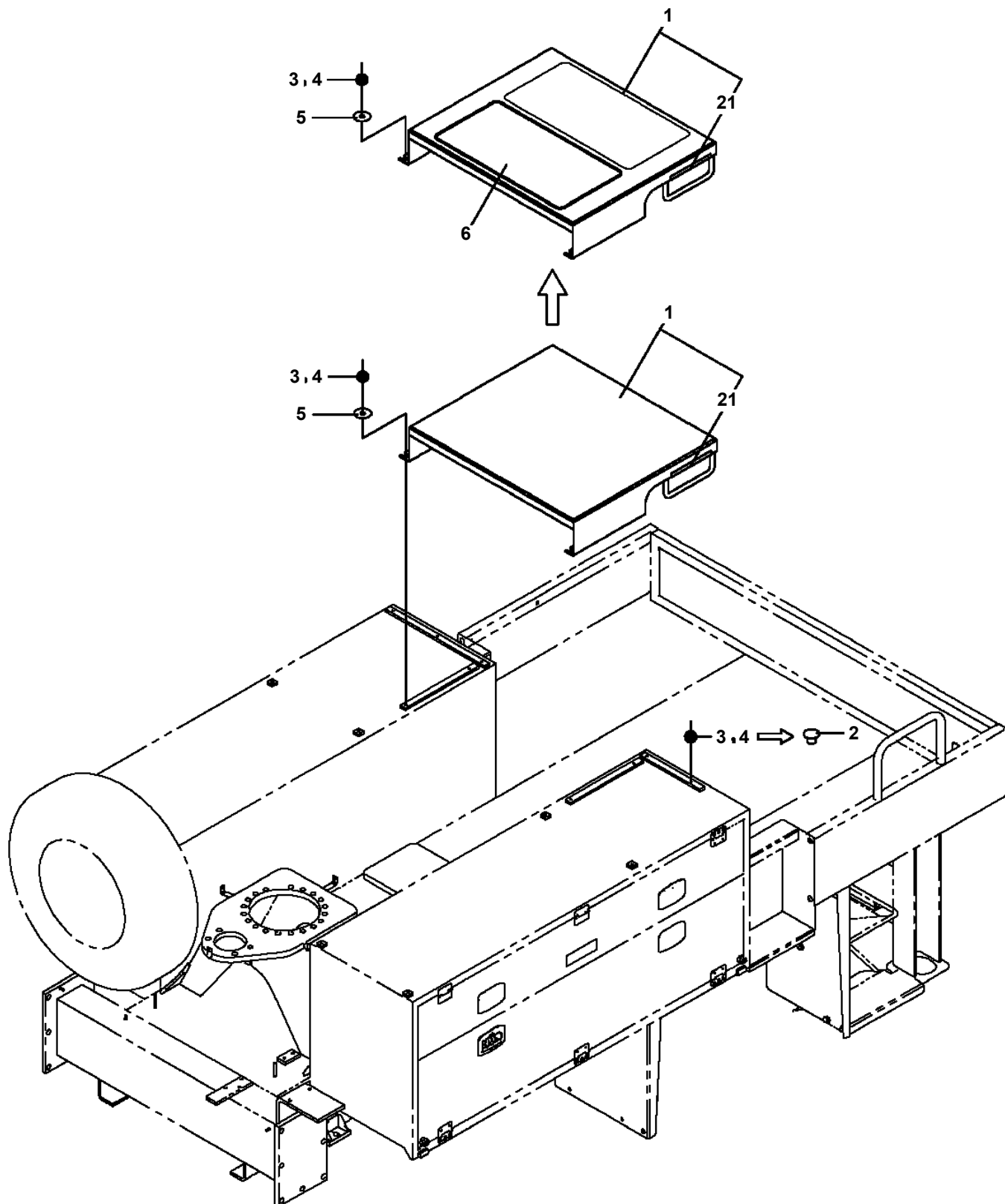
Pos No.	Parts No	Parts Name	Qty	Unit	Technical Data	Serial No (Start)	Serial No
2	(*****)	OPE.ASSY,ACCELERATOR	1				
3	(*****)	MODIFICATION ASSY	1				HK2069
	(*****)	MODIFICATION ASSY	1			HK2070	
4	(*****)	PIPING ASSY,MOUNTING	1				
5	(*****)	ELEC.ASSY (BATTERY & EMERGENCY PUMP)	1				
6	(*****)	ELEC.ASSY,CARRIER	1				
7	(*****)	OPE.ASSY,P.T.O. (COUPLING)	1				
8	(*****)	MOUNT ASSY,STEP	1				
9	(*****)	MOUNT ASSY,TIRE	1				
10	(*****)	MOUNT ASSY,TAIL LAMP	1				
11	(*****)	MOUNT ASSY,FRAME	1				
12	(*****)	MOUNT ASSY,WEIGHT	1				
13	(*****)	ELEC.ASSY (TELEMATICS)	1				

AT-110-5 42084541556 UPPER,LOWER,ISUZU TPG-NKR85AN-EE5AHY-JM
PX5430012-01 MOUNT ASSY, GUARD

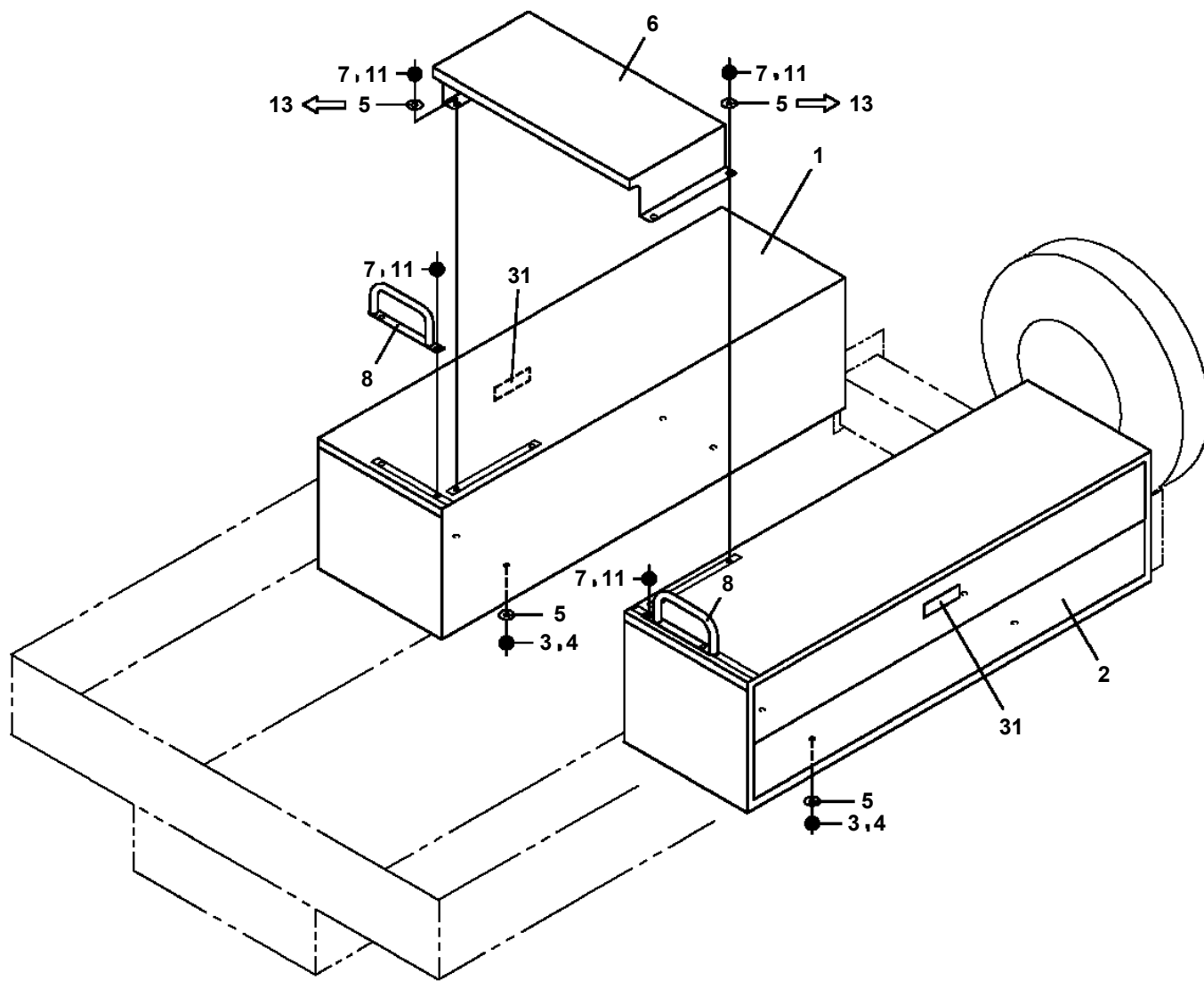


A

**AT-110-5 42084541556 UPPER,LOWER,ISUZU TPG-NKR85AN-EE5AHY-JM
PX5670039-00 MOUNT ASSY,STEP (FOR S.BUCKET)**



**AT-110-5 42084541556 UPPER,LOWER,ISUZU TPG-NKR85AN-EE5AHY-JM
PX5780126-01 MOUNT ASSY,TOOL BOX (RIGHT & LEFT,2-DECKER)**

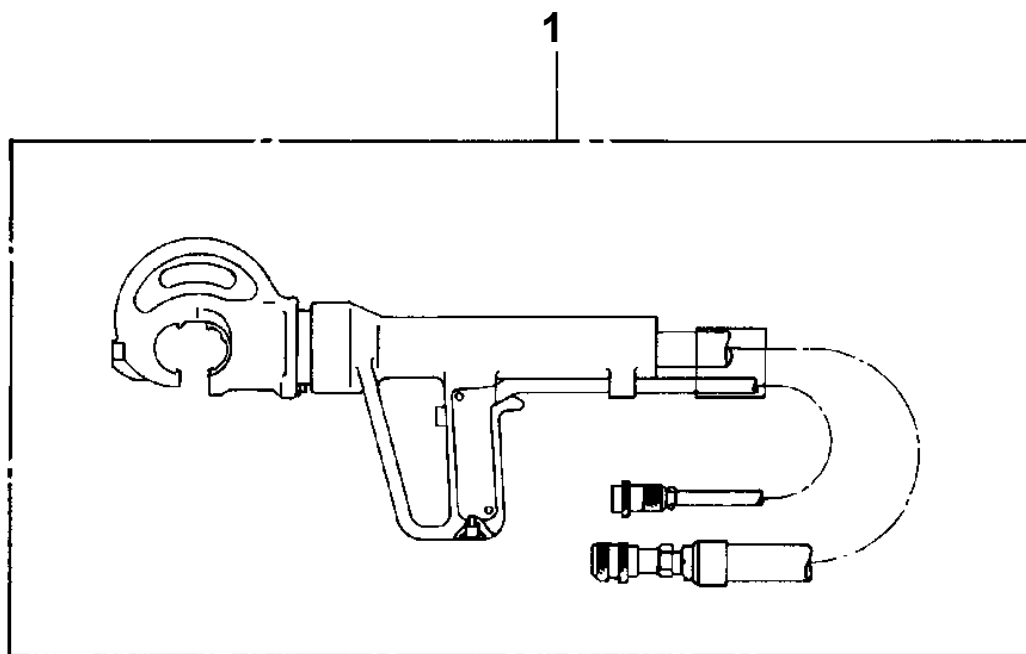


31

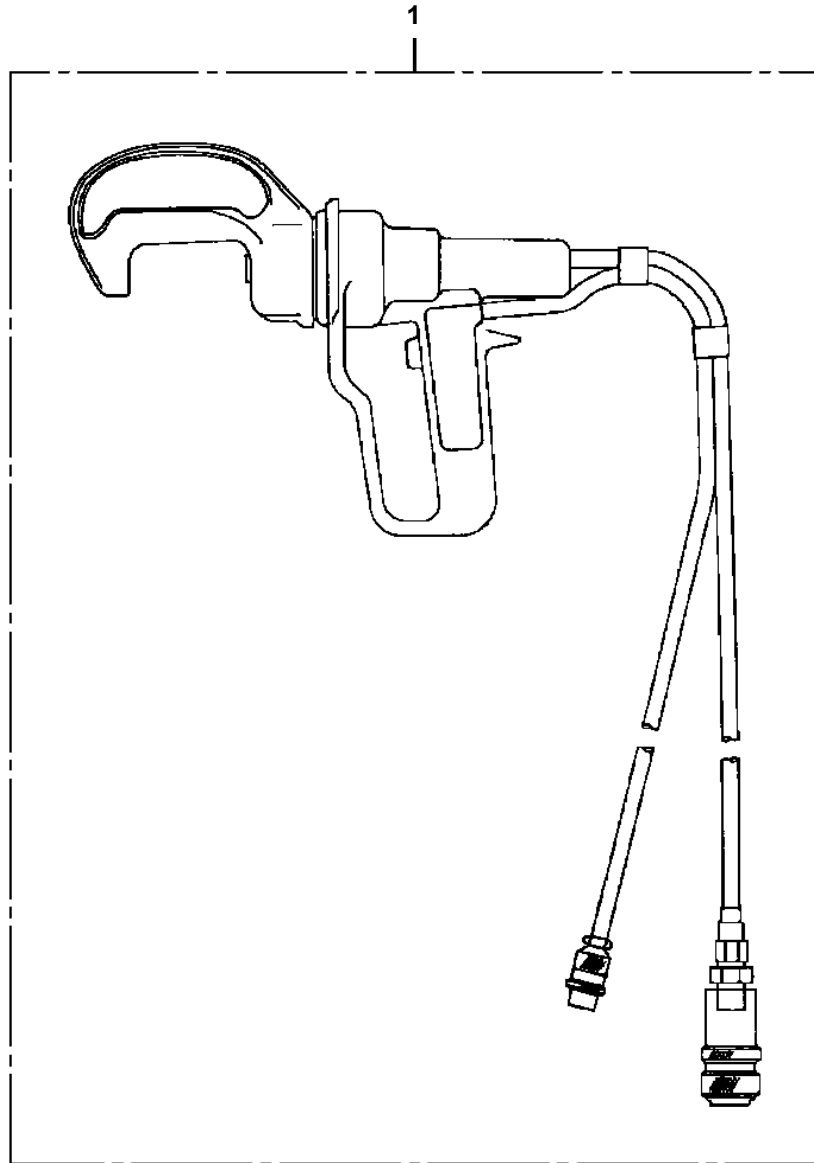
注意

上段の扉はロックを開放すると自然に開きます。取との
接触に注意して閉鎖してください。

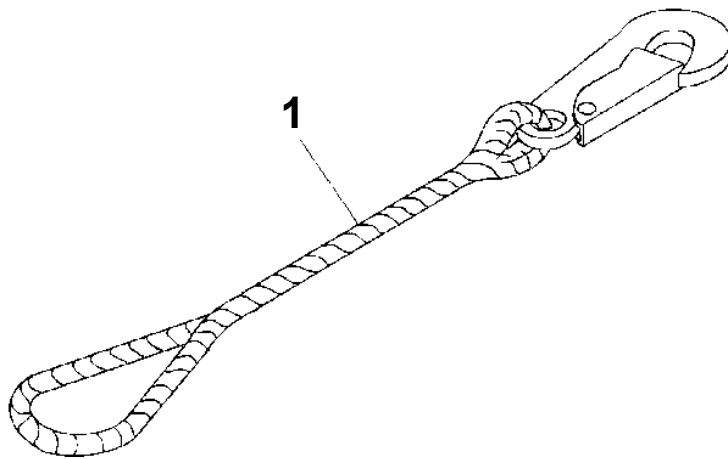
AT-110-5 42084541556 UPPER,LOWER,ISUZU TPG-NKR85AN-EE5AHY-JM
PY1050000-00 CLAMP HEAD (IZUMI 12TON 2.5M)



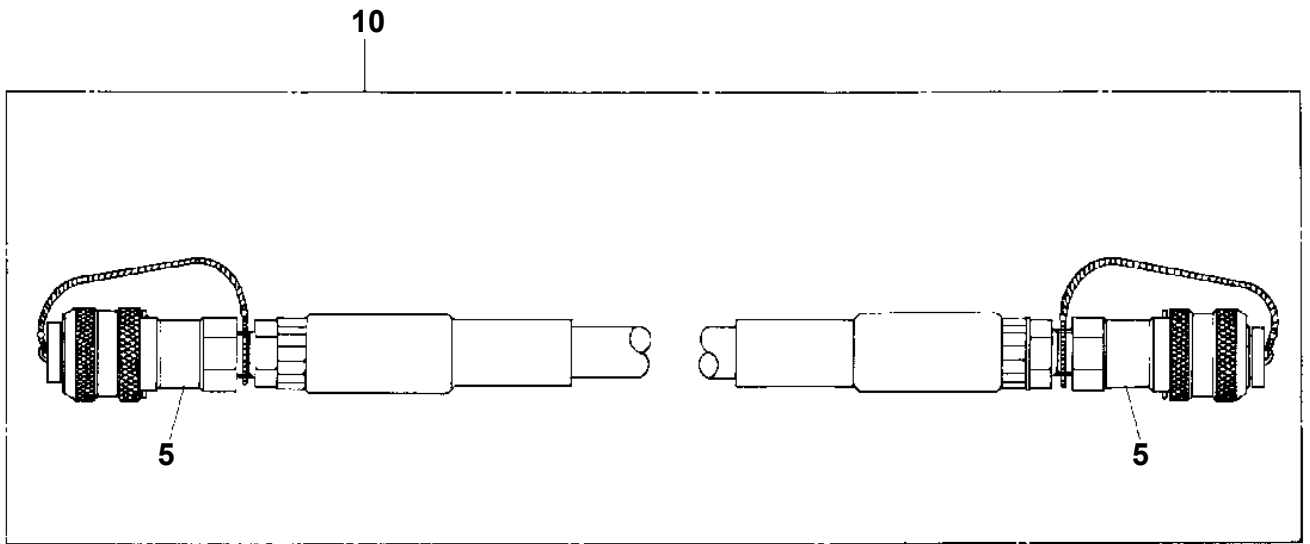
**AT-110-5 42084541556 UPPER,LOWER,ISUZU TPG-NKR85AN-EE5AHY-JM
PY1050008-01 CLAMP HEAD (IZUMI 8TON 3.5M ELECTRIC)**



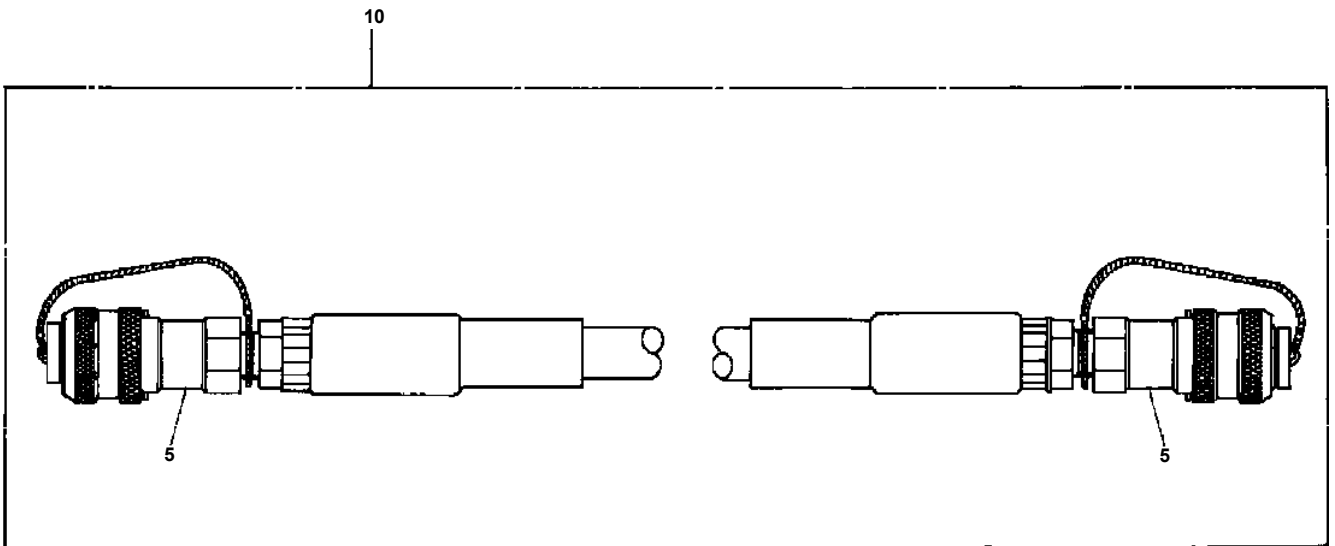
**AT-110-5 42084541556 UPPER,LOWER,ISUZU TPG-NKR85AN-EE5AHY-JM
PY1070001-00 ROPE (SAFETY,1.5M,WITH HOOK)**



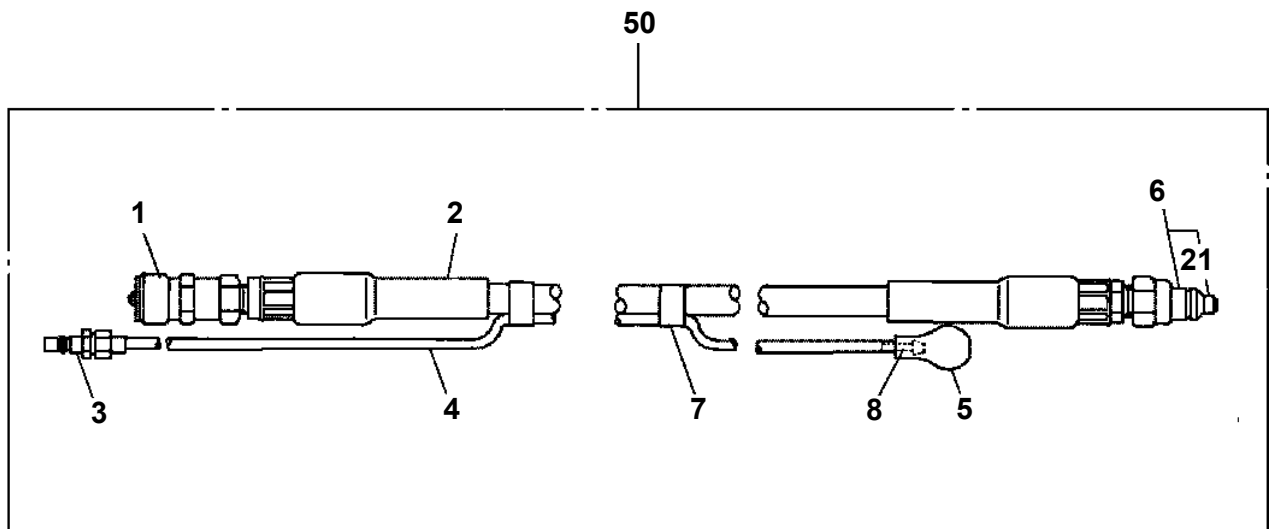
**AT-110-5 42084541556 UPPER,LOWER,ISUZU TPG-NKR85AN-EE5AHY-JM
PY1590001-01 HOSE,BOOSTER (FEMALE-FEMALE,3M)**



**AT-110-5 42084541556 UPPER,LOWER,ISUZU TPG-NKR85AN-EE5AHY-JM
PY1590007-00 HOSE,BOOSTER (FEMALE-FEMALE,5M)**



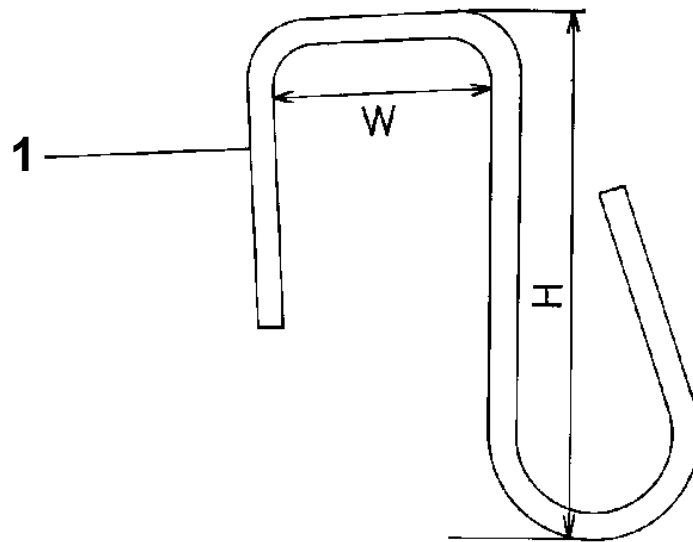
**AT-110-5 42084541556 UPPER,LOWER,ISUZU TPG-NKR85AN-EE5AHY-JM
PY1590013-00 HOSE,BOOSTER (WITH AIR BALLOON,8M)**



AT-110-5 42084541556 UPPER,LOWER,ISUZU TPG-NKR85AN-EE5AHY-JM
PY1790001-00 HANGER (FOR BUCKET)

Assembly Name HANGER

1117 0001 00



AT-110-5 42084541556 UPPER,LOWER,ISUZU TPG-NKR85AN-EE5AHY-JM
 PY2000164-07 OPTIONS,2 (UPPER)

符号	日本語名称	英語名称	備考
1	クランプ ヘッド ASSY	CLAMP HEAD ASSY	電気式
2	クランプ ヘッド ASSY	CLAMP HEAD ASSY	ヘッド 単体
3	カッタヘッド ASSY	CUTTER HEAD ASSY	イス ミ
4	ホースASSY	HOSE ASSY	エアハ ルン付
5	ホースASSY	HOSE ASSY	
6	ホースASSY	HOSE ASSY	3m,ホース・スイッチ一体タイプ
7	ホースASSY	HOSE ASSY	エアハ ルーンのみ
11	スイッチASSY	SWITCH ASSY	電気式フ ースタリモコンスイッチ
12	クランプ ヘッド ASSY	CLAMP HEAD ASSY	三和 8ton イス ミTEP-120A1 チタンヘッド ホース3,
18	ブ ルーナASSY	PRUNER ASSY	スタンレー ホース 2m
19	ドリルASSY	DRILL ASSY	スタンレー ホース 2.5m
20	レンチ,インパクト	WRENCH,IMPACT	スタンレー ホース 2.9m
21	ベルト,セーフティ	BELT,SAFETY	
22	ロープ ASSY	ROPE ASSY	1.5m フック付 10
23	ロープ ASSY	ROPE ASSY	東京電力仕様金具0.5m
24	フック	HOOK	
26	ステップ	STEP	
27	ボックス,ツール	BOX,TOOL	ボックス用物入れ (FRP) 横穴開き 幅230X長さ470X深さ290
28	ボックス,ツール	BOX,TOOL	ボックス用物入れ (FRP) 仕切付 幅370X奥行100X高140
29	ボックス,ツール	BOX,TOOL	ボックス用物入れ (FRP) 幅230X長さ470X深さ290
30	ブロック,ウッド	BLOCK,WOOD	
31	ポンプ,グリース	PUMP,GREASE	
32	ツールASSY	TOOL ASSY	
33	アースASSY	EARTH ASSY	
48	ロープ ASSY	ROPE ASSY	1.0m 8字環付
52	ウエッジ	WEDGE	黄色歯止め
53	サポート	SUPPORT	7度角度計 (島南事) 取付サポート (日野・いすゞ車用)
54	ブロック,ウッド	BLOCK,WOOD	ゴム貼り木製壁木

適用製造番号によっては取り付けがないものもあります。

MACHINES OF SOME SERIAL NO. ARE NOT EQUIPPED WITH THESE PARTS.

CLICK HERE TO **DOWNLOAD** THE COMPLETE MANUAL

- Thank you very much for reading the preview of the manual.
- You can download the complete manual from: www.heydownloads.com by clicking the link below



- Please note: If there is no response to CLICKING the link, please download this PDF first and then click on it.

CLICK HERE TO **DOWNLOAD** THE COMPLETE MANUAL