

AT-110-1 42084100050 UPPER

PD2000096-00 SWING UNIT

PG2000108-00 BOOM UNIT

PH1000505-00 SAFETY DEVICES

PJ3000341-01 BUCKET SYSTEM

PK2000392-00 FRAME UNIT

PO1000123-00 INDICATION PLATES

PW1000041-00 ACCESSORIES & TOOLS

PY1000654-01 OPTIONS,1

PY2000023-04 OPTIONS,2

ASSEMBLY

CLICK HERE TO **DOWNLOAD** THE COMPLETE MANUAL

- Thank you very much for reading the preview of the manual.
- You can download the complete manual from: www.heydownloads.com by clicking the link below



- Please note: If there is no response to CLICKING the link, please download this PDF first and then click on it.

CLICK HERE TO **DOWNLOAD** THE COMPLETE MANUAL

AT-110-1 42084100050 UPPER

Pos No.	Parts No	Parts Name	Qty	Unit	Technical Data	Serial No (Start)	Serial No (End)	Remarks
1	(*****)	FRAME	1					
2	(*****)	OUTRIGGER	1					
3	(*****)	OPE.ASSY,CONT.VALVE	1					
4	(*****)	PIPING,OUTRIGGER	1					
5	(*****)	ELEC.ASSY (FRAME)	1					
6	(*****)	BOOM REST INSTALLATION	1					
7	(*****)	TANK SUPPORT	1					

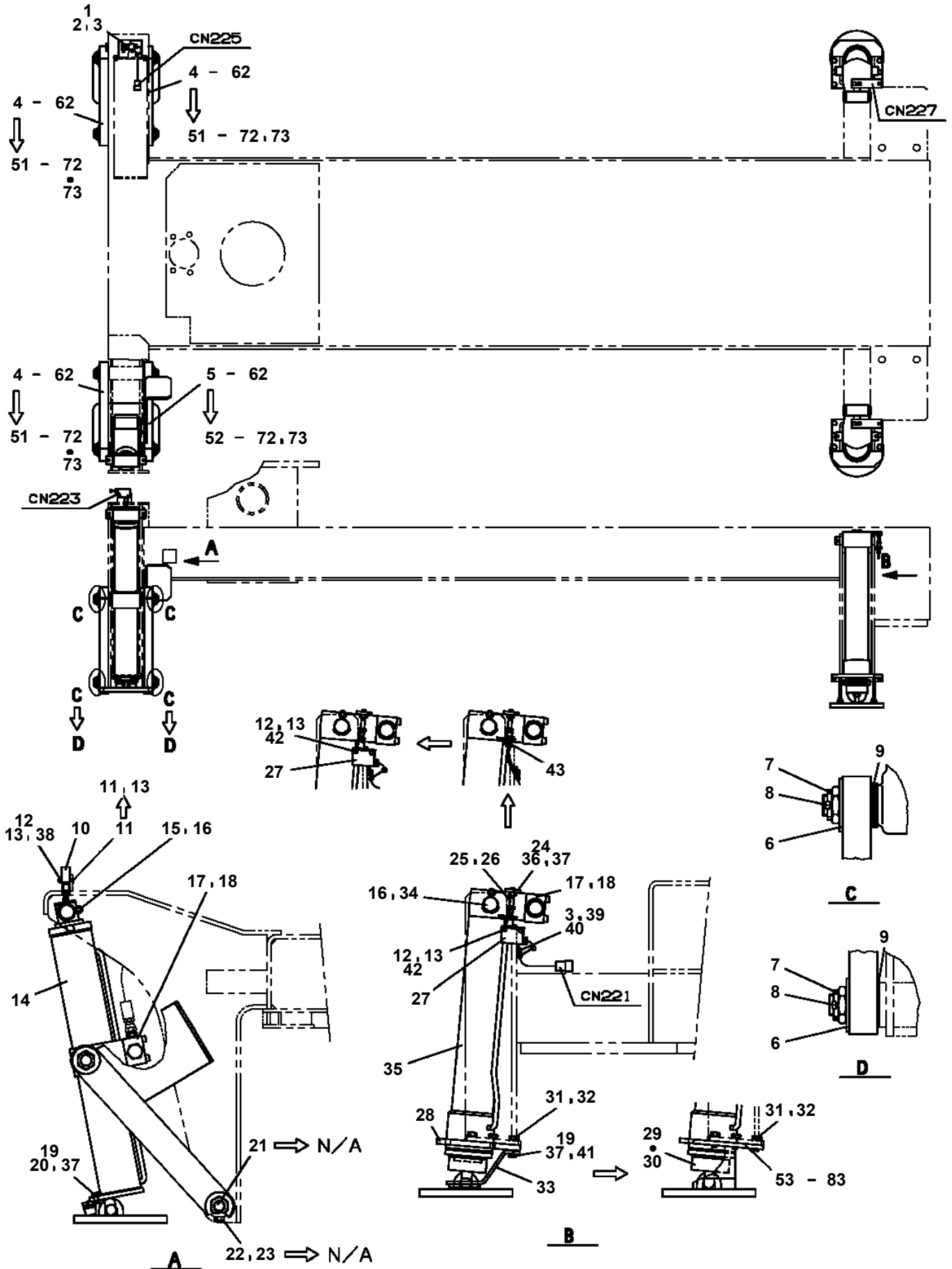
AT-110-1 42084100050 UPPER

PB1130208-02 TANK,OIL
PB1300376-00 JOINT,ROTARY (MOUNT)
PB1300377-00 JOINT,ROTARY
PB1310033-00 BRUSH,ROTARY JOINT
PB1320319-00 VALVE,MANUAL CONTROL
PB1340053-00 VALVE,SOLENOID CONTROL
PB1380163-02 POWER SUPPLY
PB1380216-00 POWER SUPPLY (100V POWER SOURCE)
PB1380217-00 POWER SUPPLY (HYDRAULIC OUTLET)
PB1400351-04 PIPING,UPPER
PB5230001-01 BOOSTER ASSY
PC1010784-04 OUTRIGGER
PC1030305-01 CYLINDER,JACK
PC1030306-01 CYLINDER,JACK (FRONT)
PC1200414-03 PIPING,OUTRIGGER
PD1010133-00 REDUCER,SWING SPEED
PD1010153-00 REDUCER,SWING SPEED (MOUNT)
PD1010172-00 REDUCER,SWING SPEED
PE1010402-01 CYLINDER,ELEVATING
PE1050120-02 CYLINDER,LEVELING (UPPER)
PE1050121-00 CYLINDER,LEVELING (LOWER)
PE5010004-01 EARTH ASSY
PG1010756-06 BOOM
PG1050454-01 CYLINDER,TELESCOPING
PG1120174-00 DETECTOR,BOOM LENGTH
PG1220079-03 PIPING,BOOM
PH1350019-00 WORKING AREA LIMITER
PH1540028-03 FOOT SWITCH (OPTION)
PH5031640-00 HARNESS
PH5031646-00 HARNESS
PH5031648-00 HARNESS
PH5032076-00 HARNESS
PH5032077-00 HARNESS
PH5032079-00 HARNESS
PH5032080-00 HARNESS
PH5032134-00 HARNESS
PH5032139-00 HARNESS
PH5032140-00 HARNESS
PH5032141-00 HARNESS
PH5032142-00 HARNESS
PH5032143-00 HARNESS
PH5032146-00 HARNESS
PH5032149-00 HARNESS
PH5032150-00 HARNESS
PH5032154-00 HARNESS
PH5032155-00 HARNESS
PH5032156-00 HARNESS
PH5032157-00 HARNESS
PH5032241-00 HARNESS
PI1010074-00 MOTOR,HYDRAULIC (SWING)
PI1050002-00 RESERVOIR,OIL
PI1100078-00 VALVE,RELIEF
PI1100103-00 VALVE,RELIEF
PI1100124-00 VALVE,RELIEF
PI1100132-01 VALVE,RELIEF
PI1120053-00 VALVE,SOLENOID
PI1120237-01 VALVE,SOLENOID
PI1120240-02 VALVE,SOLENOID
PI1120242-01 VALVE,SOLENOID
PI1140094-01 VALVE,CHECK
PI1140133-01 VALVE,CHECK
PI1140153-00 VALVE,CHECK
PI1140216-00 VALVE,CHECK
PI1140227-00 VALVE,CHECK

**AT-110-1 42084100050 UPPER
PB1380217-00 POWER SUPPLY (HYDRAULIC OUTLET)**

1	ハ [°] ワ [°] サ [°] フ [°] ライ POWER SUPPLY
2	フ [°] レ [°] トASSY,ネ [°] ム PLATE ASSY,NAME
3	ハ [°] イ [°] ピ [°] ン [°] グ [°] ,ア [°] ウ [°] ト [°] レ [°] ッ [°] ト (フ [°] ー [°] ム/ス [°] イ [°] ン [°] グ [°] フ [°] レ [°] ム) PIPING,OUTLET (BOOM/SWING FRAME)
4	ハ [°] イ [°] ピ [°] ン [°] グ [°] ,ハ [°] イ [°] ド [°] ロ [°] リ [°] ッ [°] ク [°] ア [°] ウ [°] ト [°] レ [°] ッ [°] ト (ロ [°] ワ [°] ー) PIPING,HYDRAULIC OUTLET (LOWER)
6	マ [°] ウ [°] ン [°] ト,サ [°] ホ [°] ー [°] ト MOUNT,SUPPORT

**AT-110-1 42084100050 UPPER
PC1010784-04 OUTRIGGER**



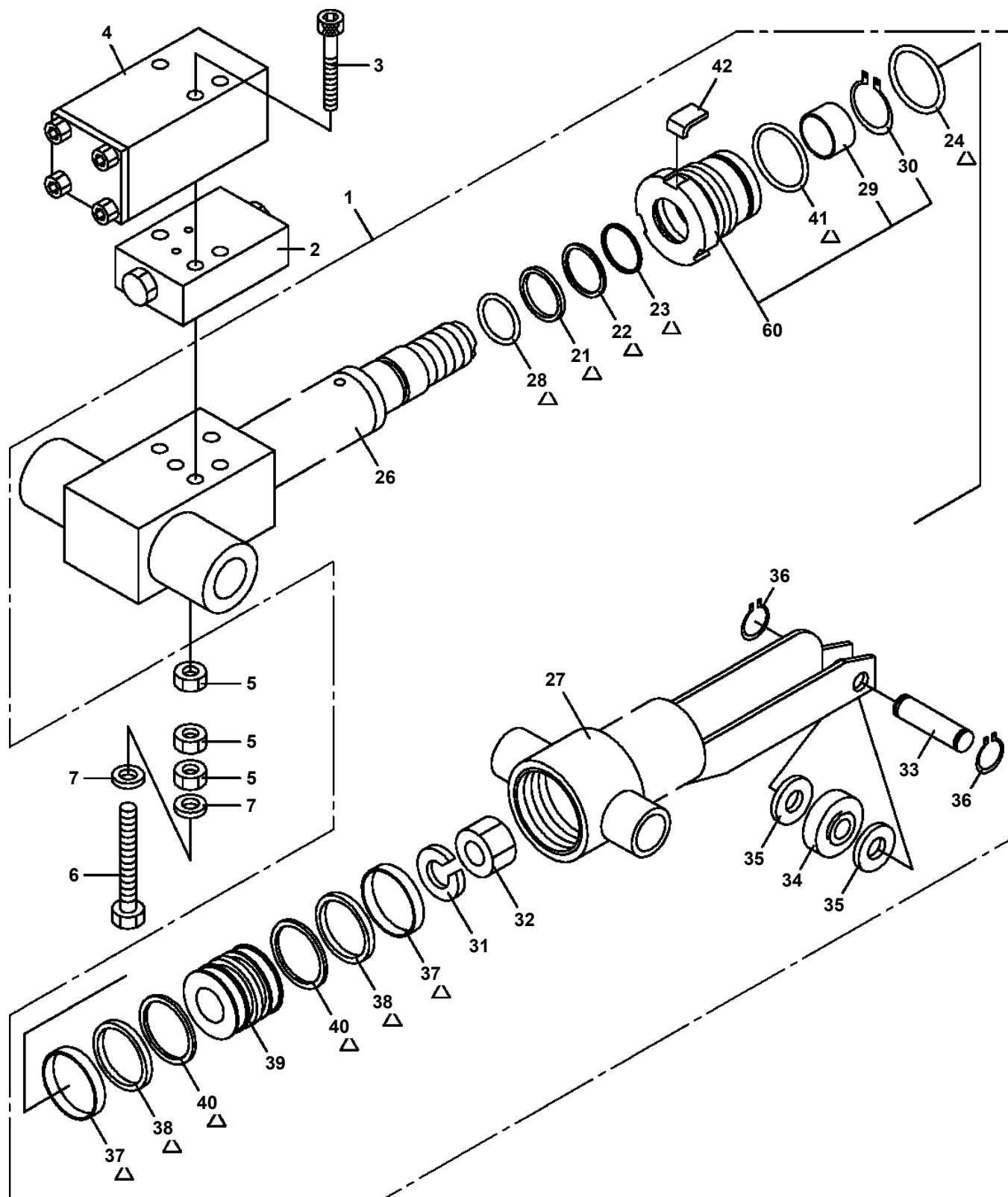
AT-110-1 42084100050 UPPER

Pos No.	Parts No	Parts Name	Qty	Unit	Technical Data	Serial No (Start)	Serial No (End)	Remarks	Pa
108	80430620400	JOINT	1			217980			
112	36625790000	VALVE,CHECK	1			217980			000
115	80400160204	JOINT	1			217980			
117	80316070080	PLUG	1		PF1/2	217980			
118	80316070040	PLUG	1		PF1/4	217980			

AT-110-1 4208410050 UPPER

Pos No.	Parts No	Parts Name	Qty	Unit	Technical Data	Serial No (Start)	Serial No (End)	Remarks	Pa
1	36027010000	CYLINDER,LEVELING	1						
2	36624110000	VALVE,CHECK	1						
3	90180210050	BOLT,BUTTON	4		M10X50				
4	82400000459	CAP	1						
5	42491150100	PLATE	1				217389		
6	91002801000	O-RING	2		1B P10		217389		
24	36026412000	PISTON	1						
25	91300009500	BEARING,PLAIN	1						
26	91002802600	O-RING	1		1B P26				
29	80612110520	RING,RITAINING	1		AR52				
30	91002909000	O-RING	1		1B G90				
31	80801004525	BEARING,PLAIN	1						
32	91694004500	PACKING	1						
33	91410204502	RING,BACKUP	1						
34	91660004501	SEAL,DUST	1						
36	80801003030	BEARING,PLAIN	2			217390			
37	80820003030	BEARING,PLAIN	2						
	80820003030	BEARING,PLAIN	2				217389		
38	80720105025	PIN,SPRING	1		5X25				
39	82455106000	NIPPLE,GREASE	2		A-M6F FE				
40	91684009500	PACKING	2						
41	91411208002	RING,BACKUP	2						
42	91002909500	O-RING	1		1B G95				
51	36027019510	CYLINDER ASSY	1						
52	36027019520	ROD ASSY	1						
53	36026419530	COVER,ROD	1						
54	36026929900	PACKING SET	1						

**AT-110-1 42084100050 UPPER
PG1050454-01 CYLINDER,TELESCOPING**

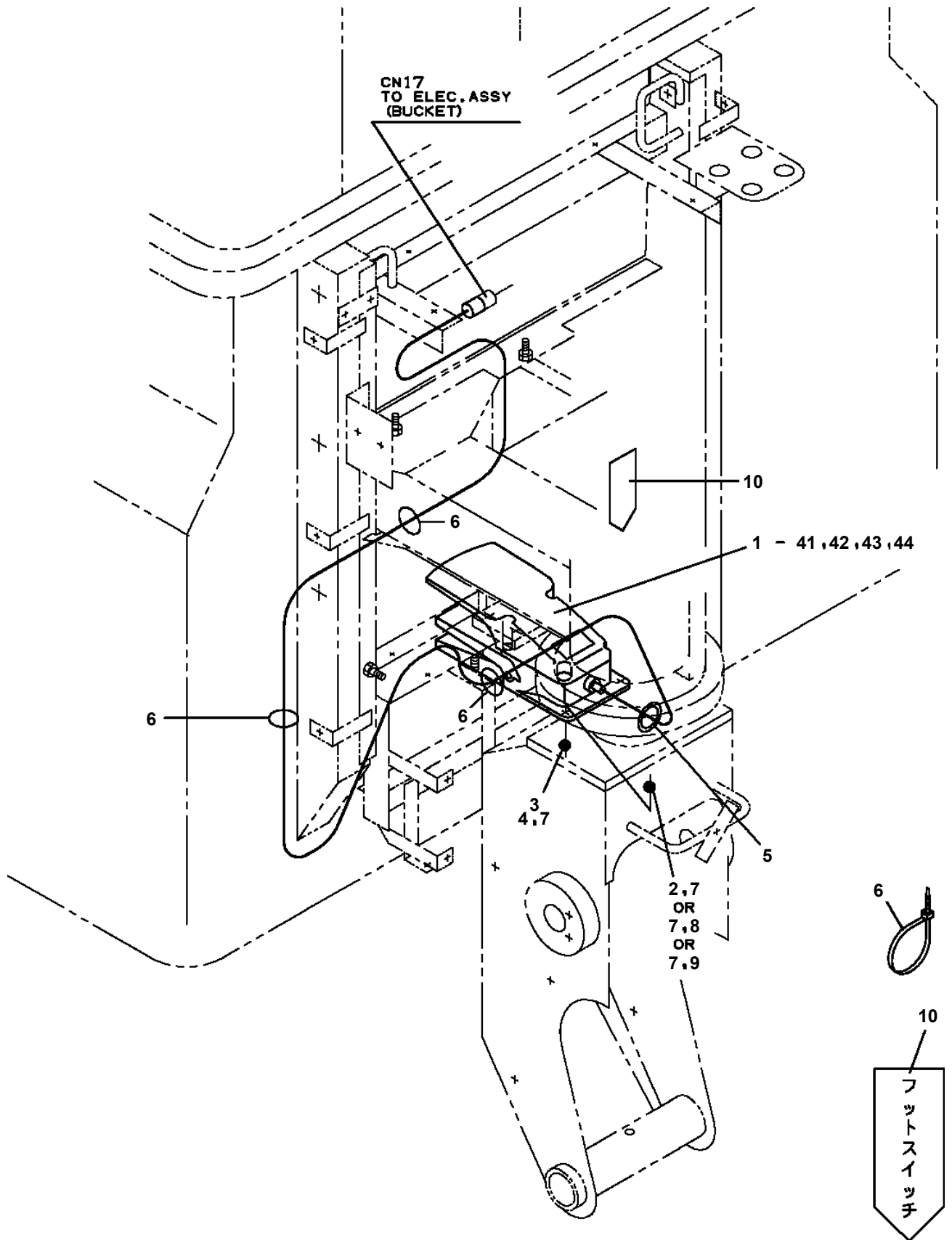


△:PACKING SET KEY NO. 70 (KEY NO.21,22,23,24,28,37,38,40,41)

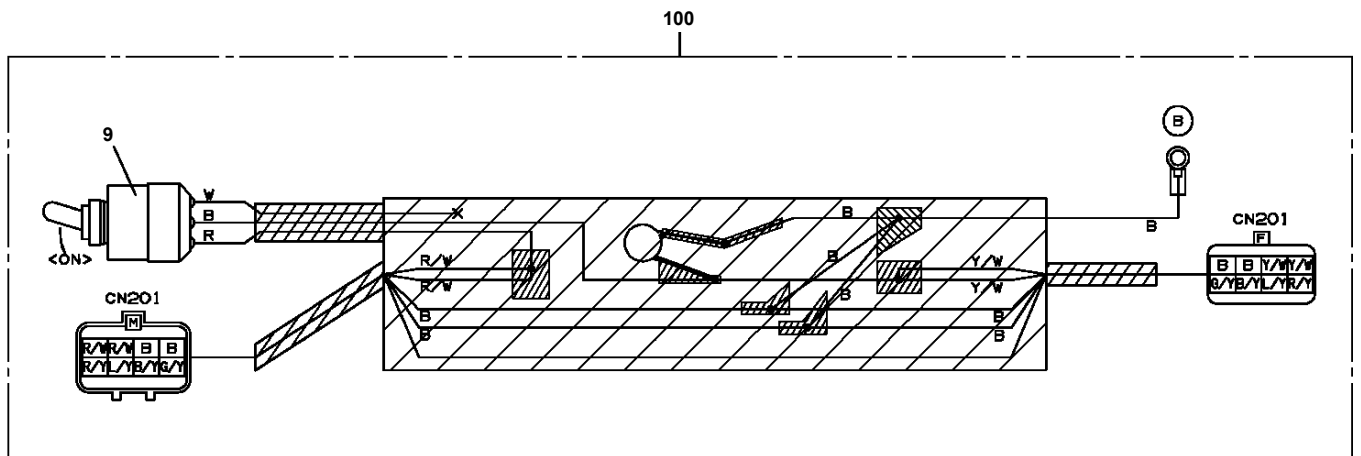


△:PACKING SET KEY NO. 80 (KEY NO.21,22,23,24,28,37,38,40,41)

AT-110-1 42084100050 UPPER
PH1540028-03 FOOT SWITCH (OPTION)

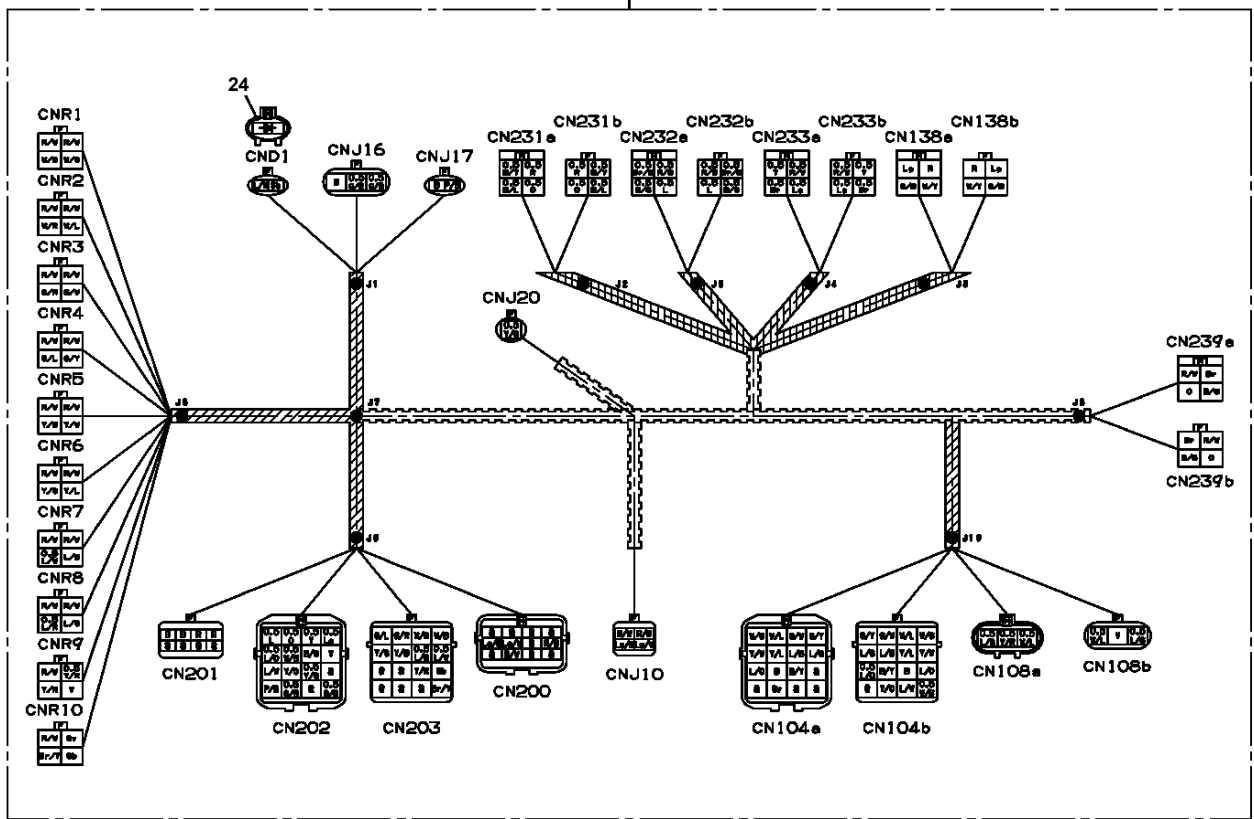


AT-110-1 42084100050 UPPER
PH5032077-00 HARNESS

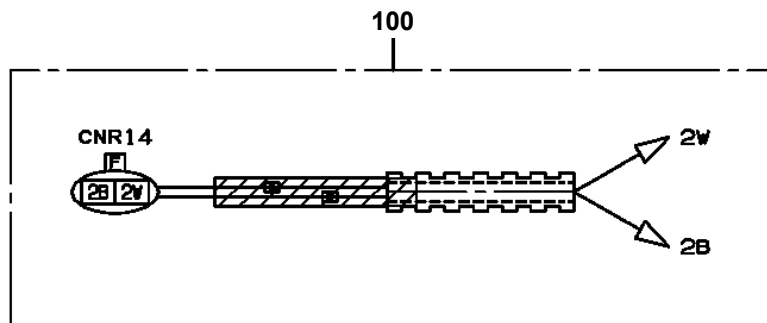


AT-110-1 42084100050 UPPER PH5032140-00 HARNESS

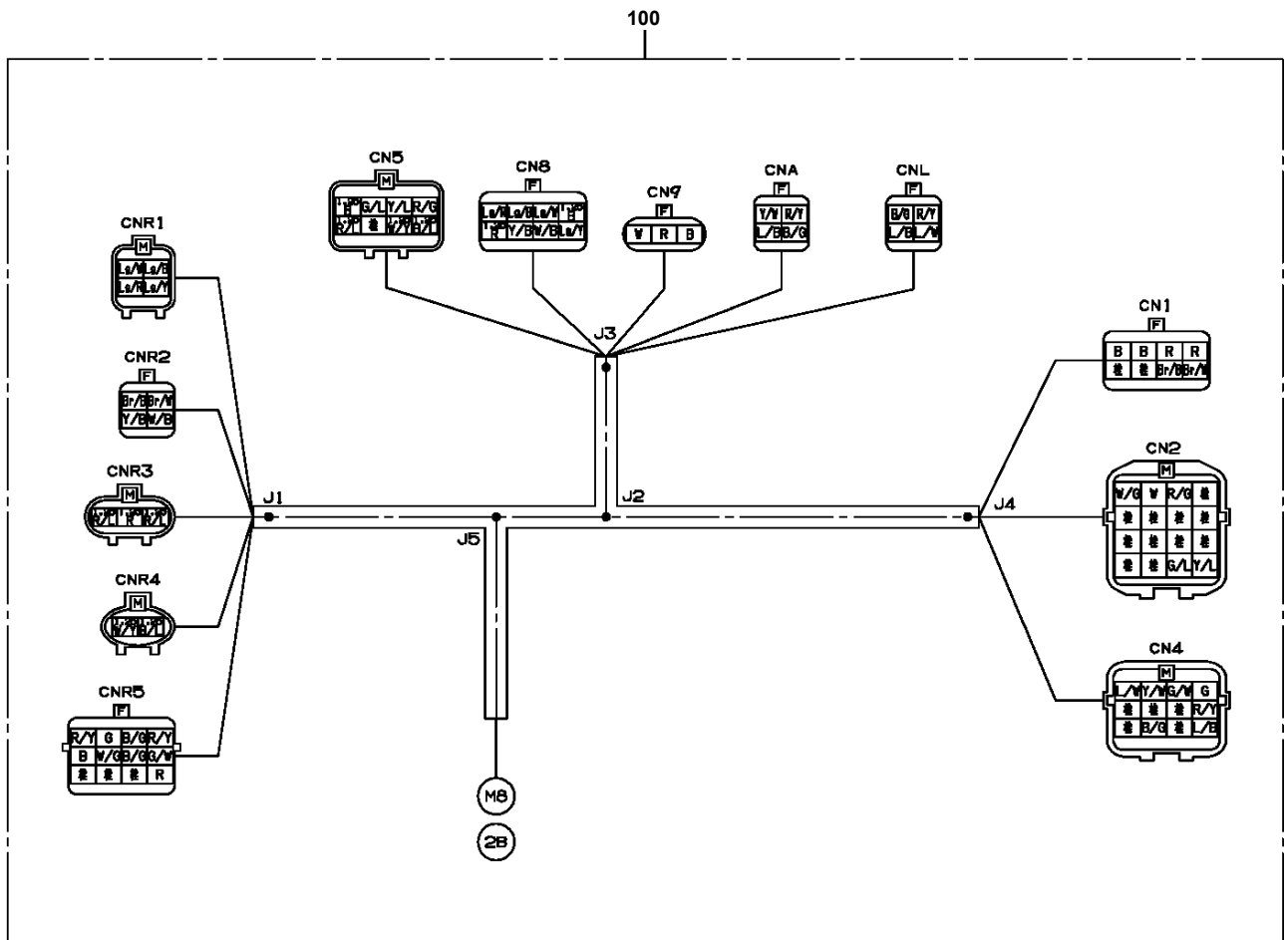
100



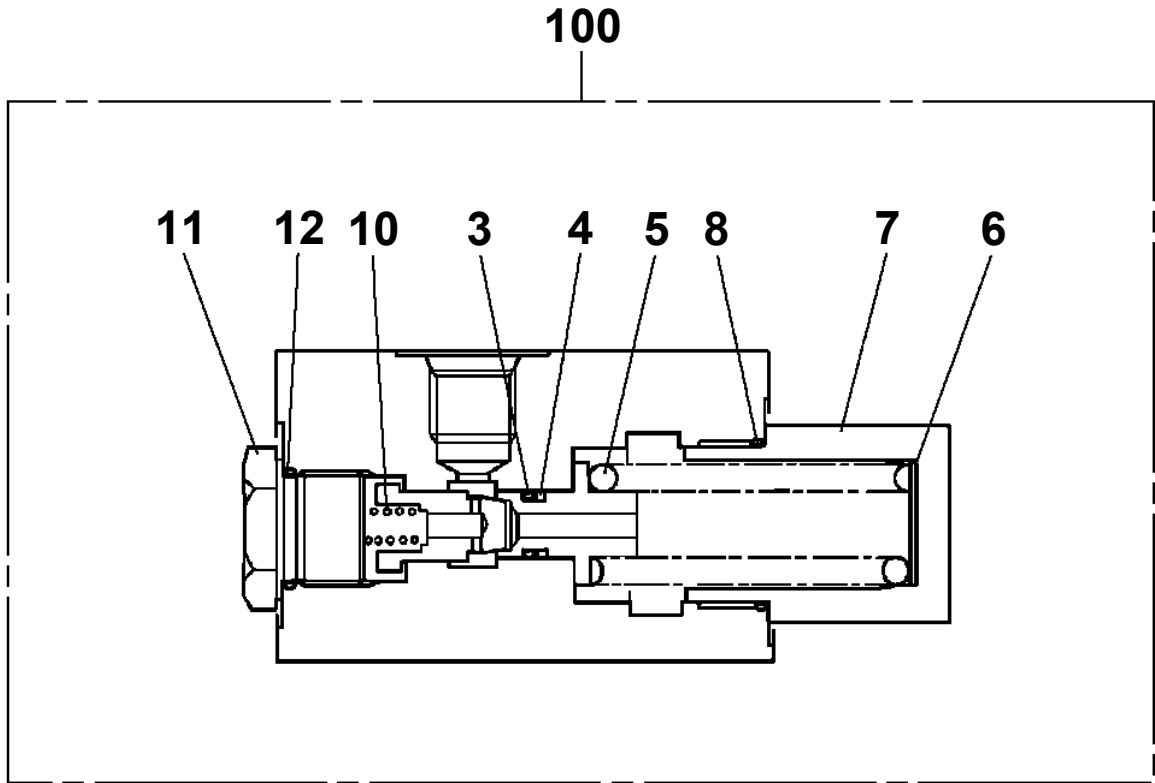
AT-110-1 42084100050 UPPER
PH5032149-00 HARNESS



**AT-110-1 42084100050 UPPER
PH5032157-00 HARNESS**

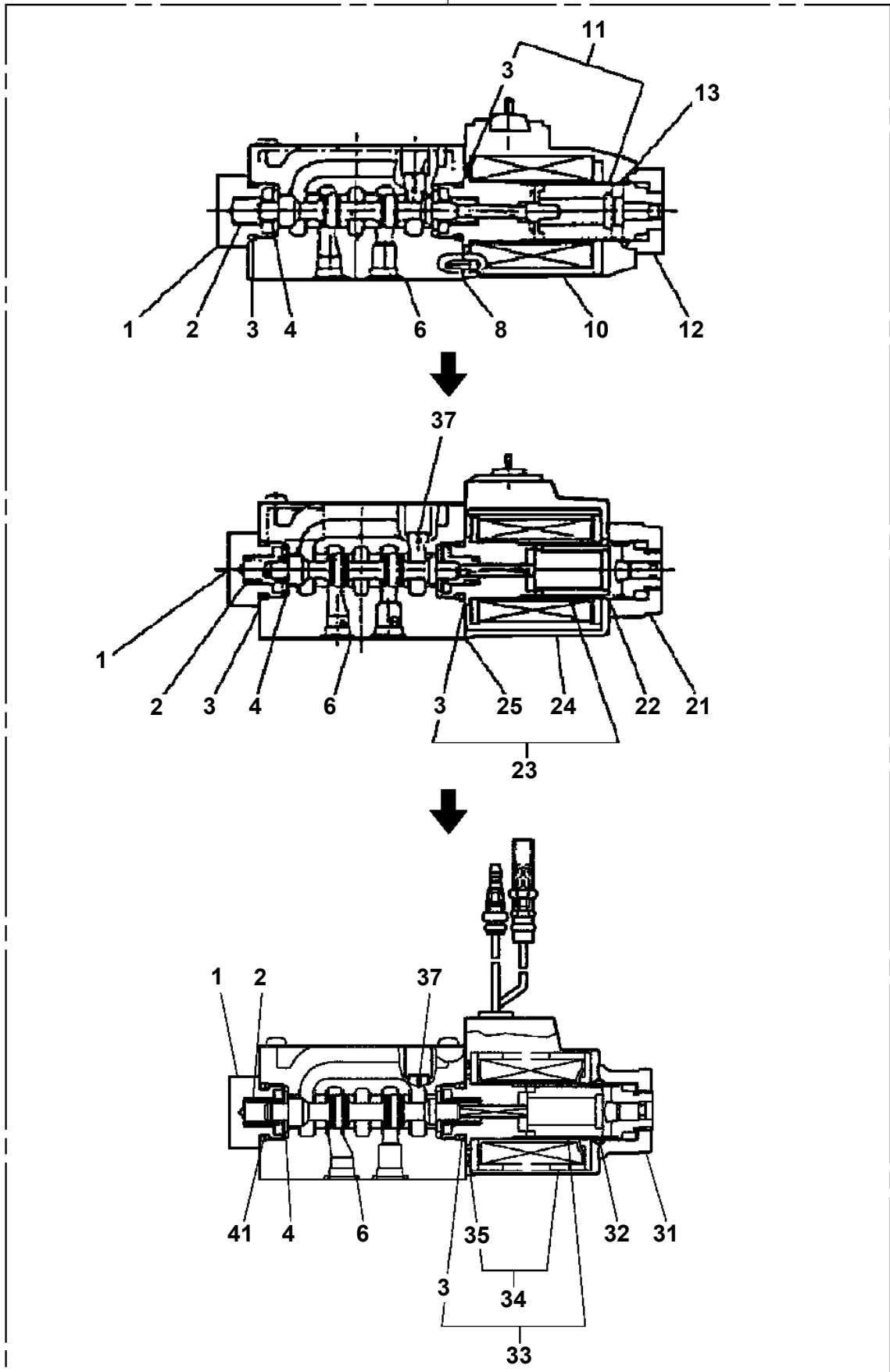


**AT-110-1 42084100050 UPPER
PI1100103-00 VALVE,RELIEF**



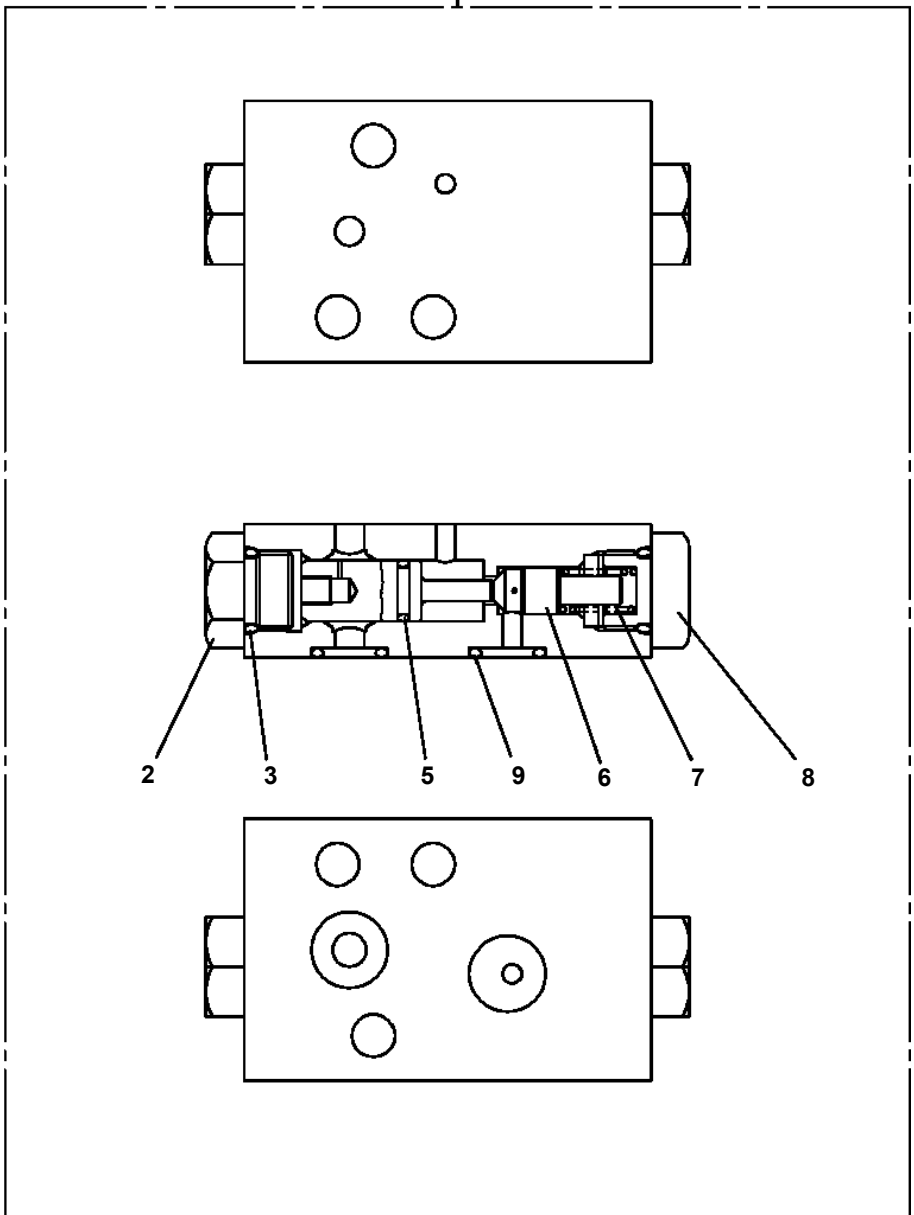
AT-110-1 42084100050 UPPER
PI1120240-02 VALVE,SOLENOID

100

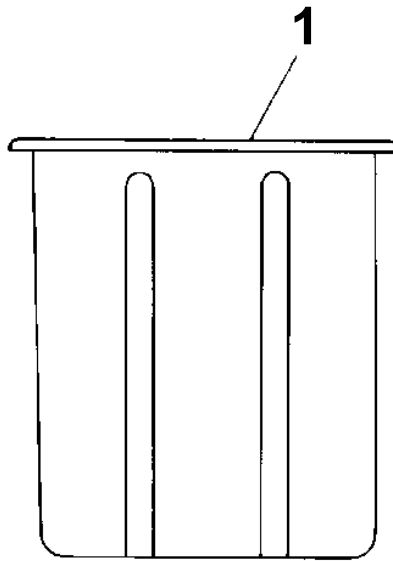


**AT-110-1 42084100050 UPPER
PI1140153-00 VALVE,CHECK**

50



**AT-110-1 42084100050 UPPER
PJ3010047-00 BUCKET (INNER CASE,OPTION)**



AT-110-1 42084100050 UPPER

Pos No.	Parts No	Parts Name	Qty	Unit	Technical Data	Serial No (Start)	Serial No (End)	Ren
1	42260910100	BUCKET (INNER CASE,OPTION)	1					
2	91850210545	FASTENER	1		L=545			

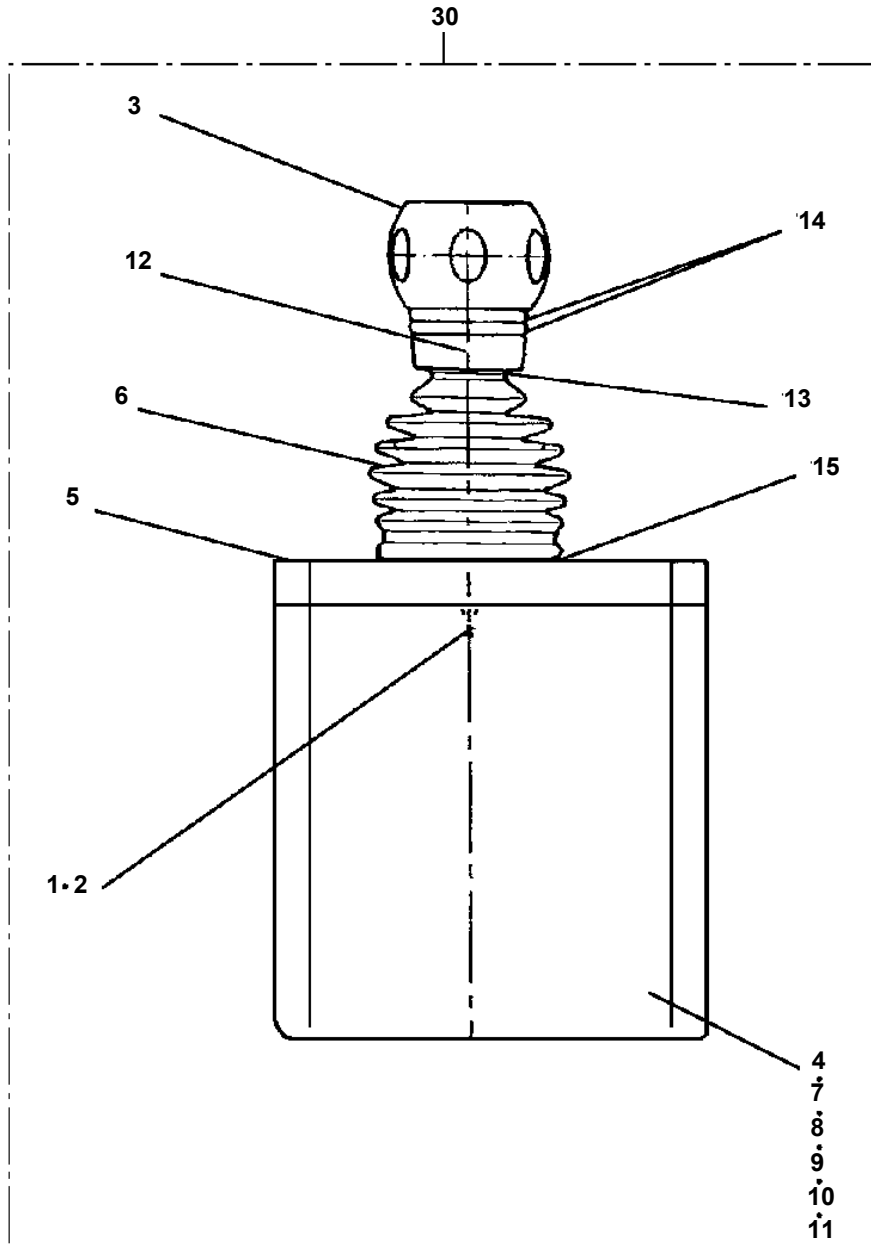
AT-110-1 42084100050 UPPER

Pos No.	Parts No	Parts Name	Qty	Unit	Technical Data	Serial No (Start)	Serial No (End)	Remarks	Pages
1	42231631000	TABLE,SLEWING	1						
2	37000558530	PLATE	3		T=9				
3	90174110020	BOLT	6		M10X20				
4	90302041001	WASHER,SPRING	6		10				
5	82456101000	NIPPLE,GREASE	1		A-PT1/8		217384		
	82456101000	NIPPLE,GREASE	2		A-PT1/8	217385			
6	82400000459	CAP	1				217384		
	82400000459	CAP	2			217385			
7	82400000347	GROMMET	1		L=320				
8	37000160880	PIN	1						
9	37000535670	PLATE	1		T=9				
10	90171120035	BOLT	1		M20X35				
11	90302042001	WASHER,SPRING	1		20				
12	37000159250	PIN	1						
13	37000524580	PLATE	2		T=1.0				
14	37000148780	PIN	1				217384		
	37000184160	PIN	1			217385			

AT-110-1 42084100050 UPPER

Pos No.	Parts No	Parts Name	Qty	Unit	Technical Data	Serial No (Start)	Serial No (End)	Remarks	Pages
1	42472563010	COVER	2						
2	42472563020	COVER	1						
3	80146708020	RIVET	13						
4	90303070801	WASHER,PLAIN	13		8				

AT-110-1 42084100050 UPPER
PL1020038-00 LEVER,CONTROL



CLICK HERE TO **DOWNLOAD** THE COMPLETE MANUAL

- Thank you very much for reading the preview of the manual.
- You can download the complete manual from: www.heydownloads.com by clicking the link below



- Please note: If there is no response to CLICKING the link, please download this PDF first and then click on it.

CLICK HERE TO **DOWNLOAD** THE COMPLETE MANUAL

AT-110-1 42084100050 UPPER

Pos No.	Parts No	Parts Name	Qty	Unit	Technical Data	Serial No (Start)	Serial No (End)	Remarks
11	42478365100	HARNES	1					
12	42478365500	RELAY ASSY (KANDENKO)	1					
13	36140510000	DETECTOR ASSY,ANGLE	1					
14	42478362200	PLATE	1					
15	42651620400	COVER	1					
16	90101208016	BOLT	7		M8X16			
17	90302040801	WASHER,SPRING	6		8			
18	90101206014	BOLT	2		M6X14			
19	90302040601	WASHER,SPRING	2		6			
20	91810130240	FASTENER	20					
21	37000547660	PLATE	2		T=2.3			
32	42420623600	LAMP ASSY (RED)	1					
33	42478365200	PLATE,NAME	1					
52	82400000201	GROMMET	1		KG-016			
61	37002220430	PLATE,CAUTION	1					
64	82100005004	LENS (RED)	1					
71	42478367010	PLATE,NAME	1					
106	(*****)	ELEC.ASSY (KANDENKO)	1					

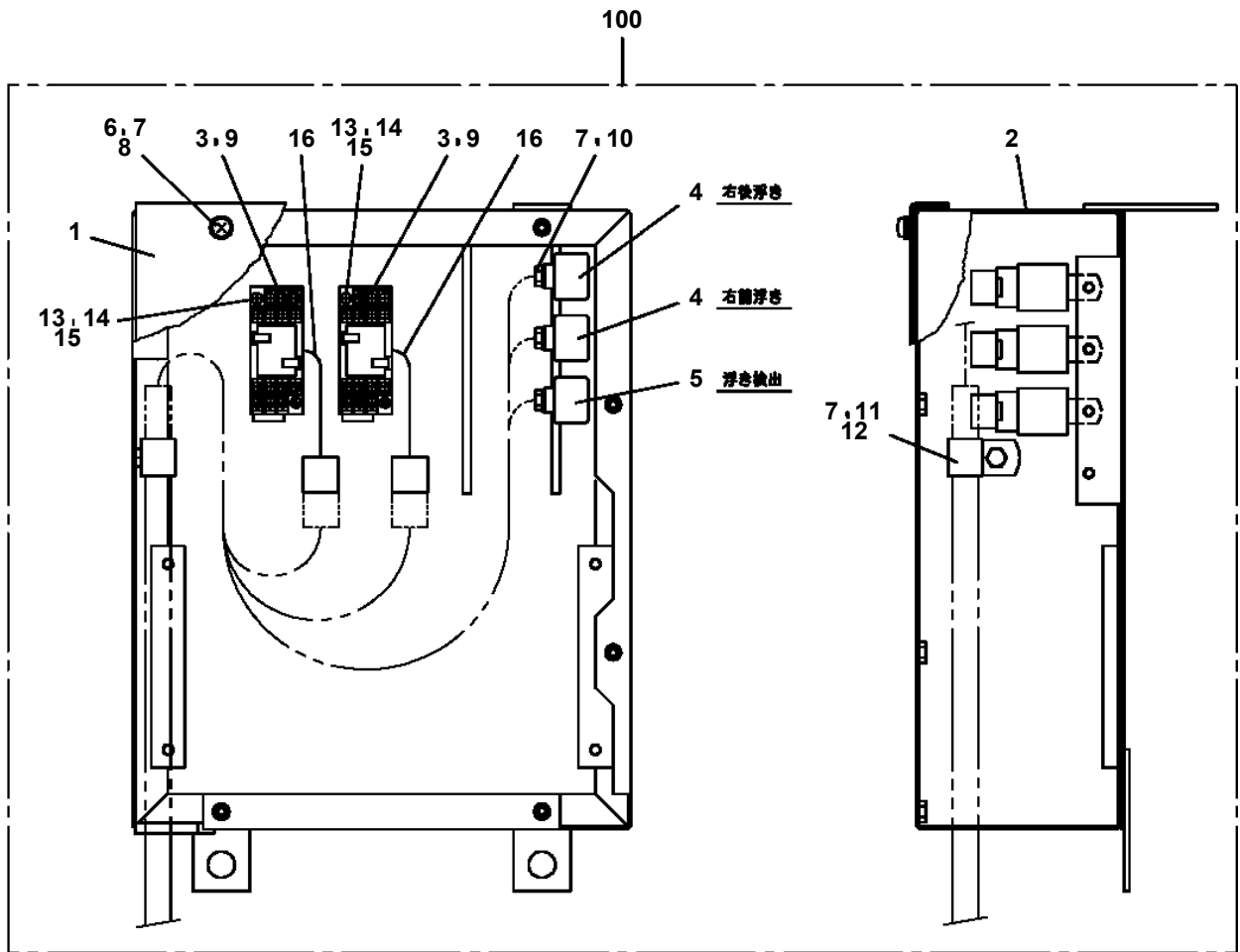
AT-110-1 4208410050 UPPER

Pos No.	Parts No	Parts Name	Qty	Unit	Technical Data	Serial No (Start)	Serial No (End)	Remark
1	42354390100	HARNESS	1		L=14500			
3	91810132530	FASTENER	20					
4	42354390200	HARNESS	1		L=14500			
5	90201200600	NUT	6		M6			
6	90302040601	WASHER,SPRING	13		6			
7	36140520000	DETECTOR,ANGLE	1					
8	90101208016	BOLT	2		M8X16			
9	90302040801	WASHER,SPRING	2		8			
10	42354390400	SUPPORT	1					
11	36131990000	DETECTOR,BOOM LENGTH	1					
12	90101206012	BOLT	6		M6X12			
13	37000714010	CLAMP ASSY	4		12X1			
14	82108501140	SWITCH	1					
15	82100002004	CLAMP	6		WR8			
16	42354390300	HARNESS	1		L=5560			
18	82400000095	GROMMET	1					
19	42350071000	ROLLER ASSY	1					
20	42353100600	ROLLER ASSY	1					
21	42353100700	PIN	1					
22	90171106012	BOLT	1		M6X12			
23	37000300740	SLEEVE	2		18-12			
41	42360030040	SUPPORT	1					
42	37001102350	ROLLER	2					
43	37000302060	SPACER	2		L=11.2			
45	90201201000	NUT	2		M10			
46	90302041001	WASHER,SPRING	2		10			
47	90303071001	WASHER,PLAIN	2		10			
61	42351120200	SUPPORT	1					

AT-110-1 42084100050 UPPER

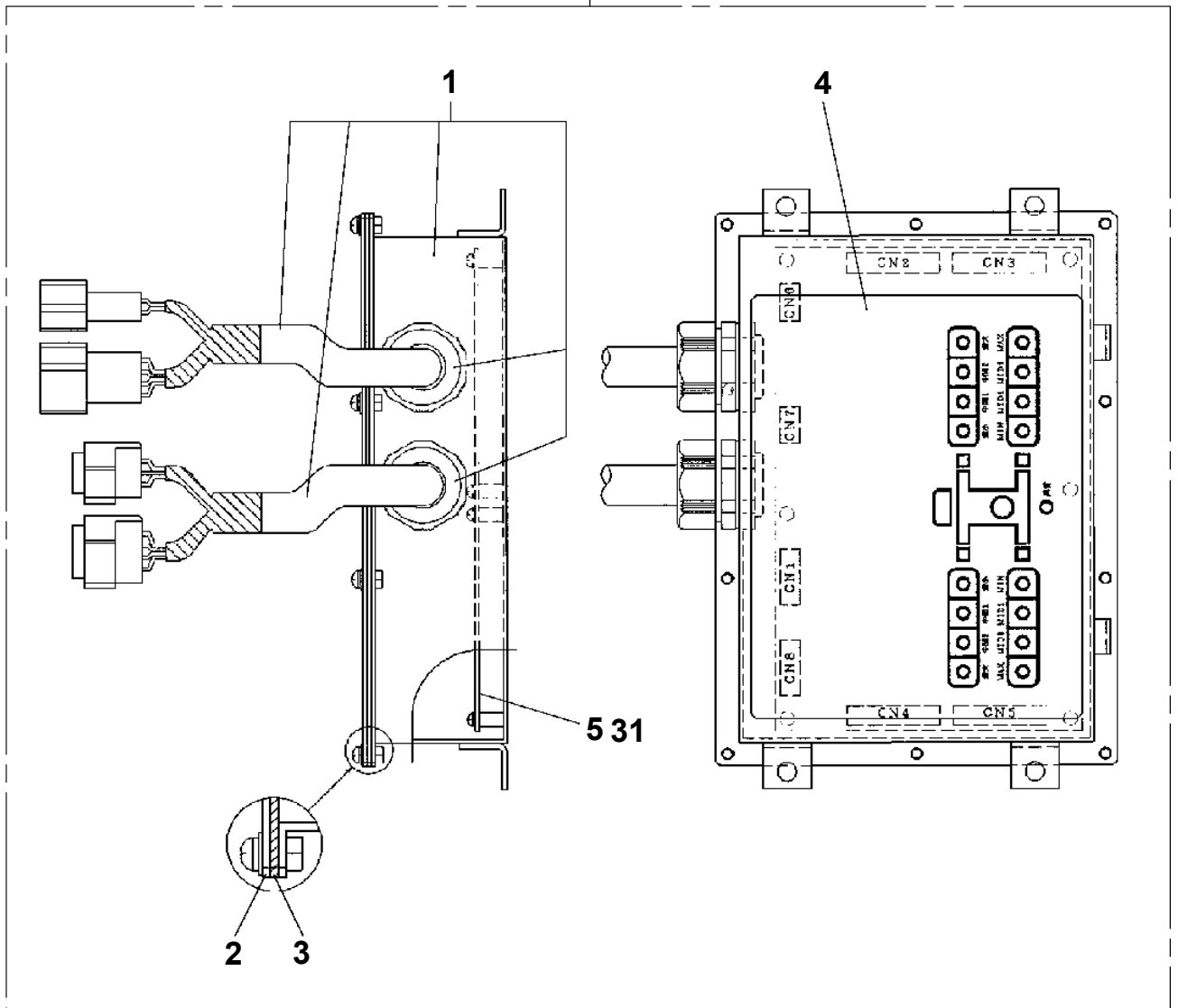
Pos No.	Parts No	Parts Name	Qty	Unit	Technical Data	Serial No (Start)	Serial No (End)	Remarks
1	42651760010	PLUG	1					
21	42478362100	HARNESS	1					
22	42478362500	RELAY ASSY	1					
23	36140510000	DETECTOR ASSY,ANGLE	1					
24	42478362200	PLATE	1					
25	42651620400	COVER	1					
26	90101208016	BOLT	7		M8X16			
27	90302040801	WASHER,SPRING	6		8			
28	90101206014	BOLT	2		M6X14			
29	90302040601	WASHER,SPRING	2		6			
30	91810130240	FASTENER	20					
31	37000547660	PLATE	2		T=2.3			
51	37002220430	PLATE,CAUTION	1					
62	82400000201	GROMMET	1		KG-016			

AT-110-1 42084100050 UPPER
PN1110261-00 RELAY ASSY

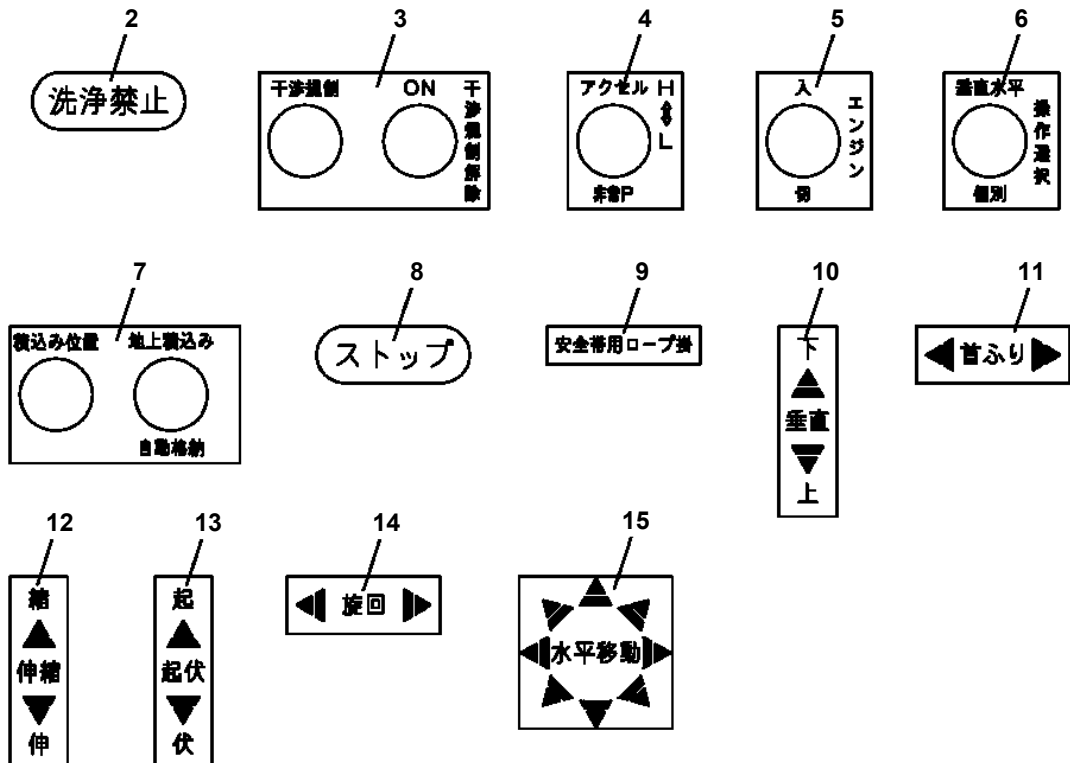
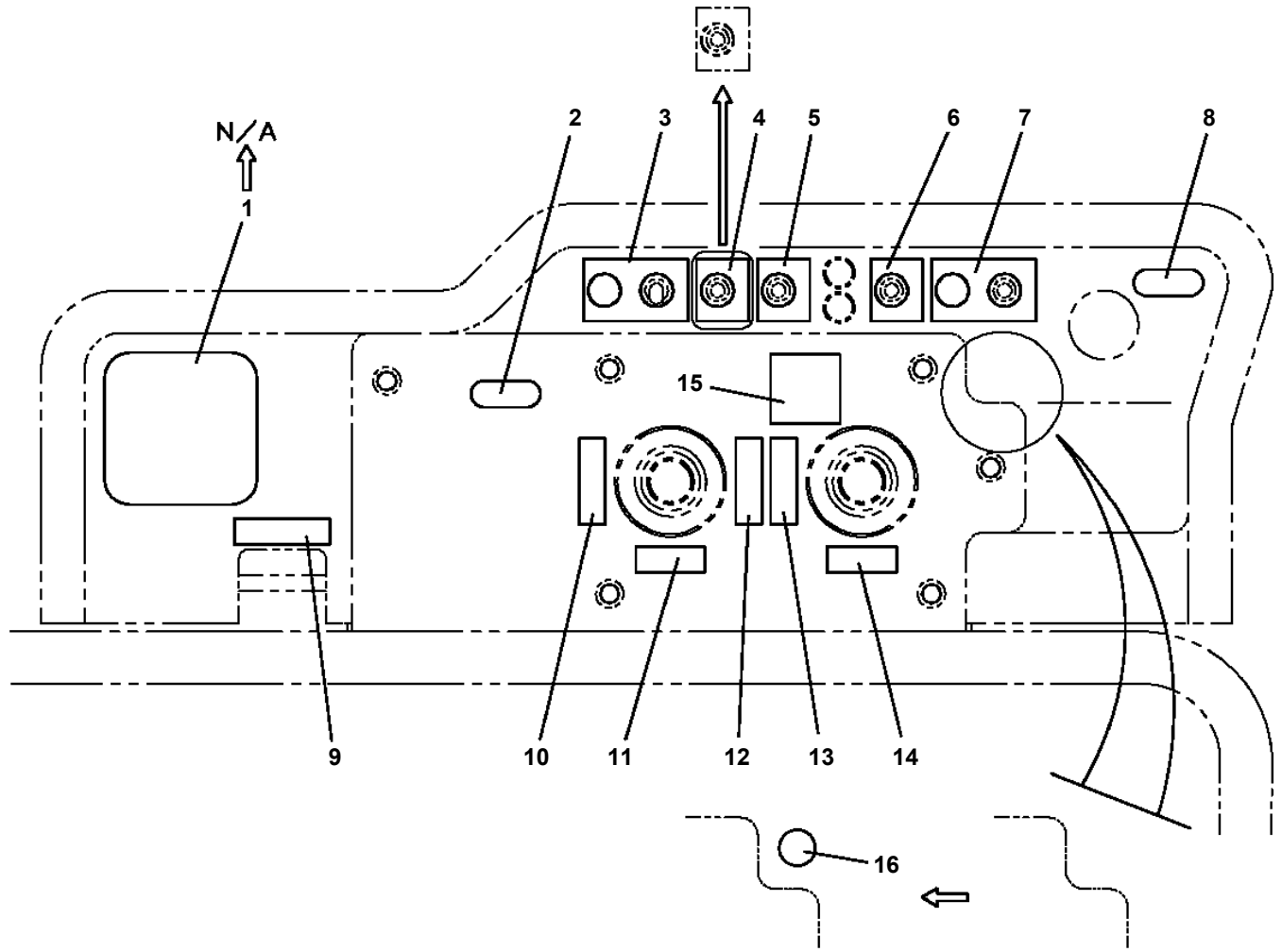


**AT-110-1 42084100050 UPPER
PN1210121-00 TRANSMITTER,SIGNAL**

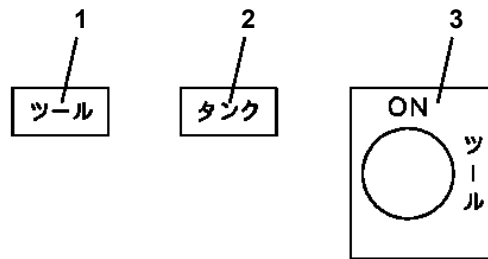
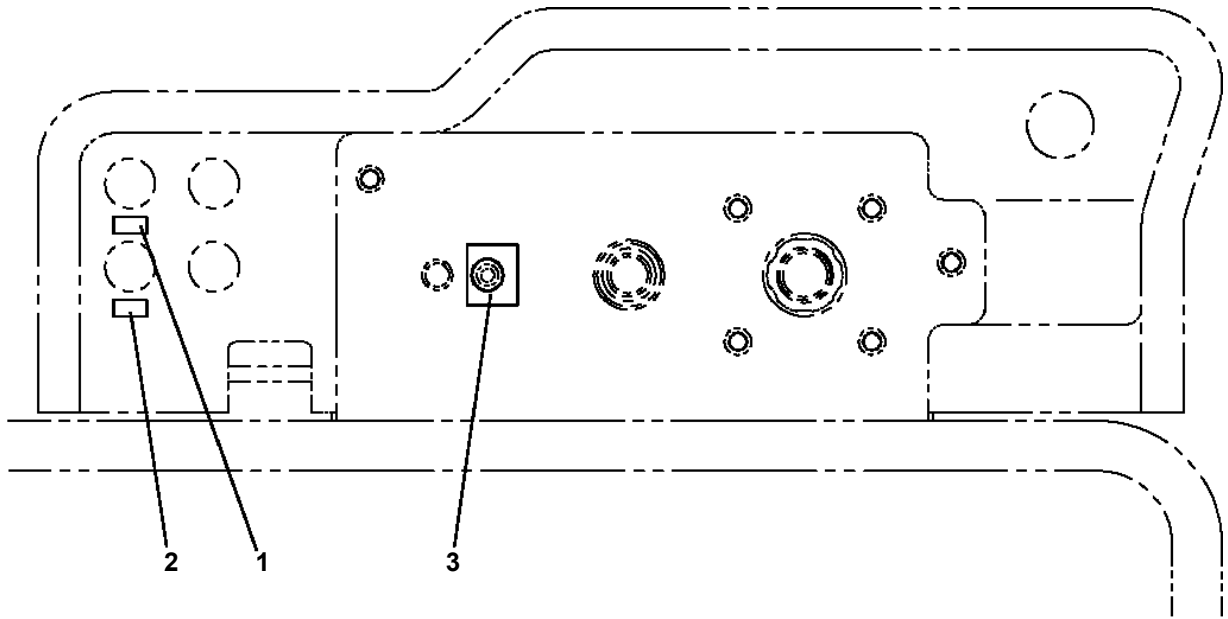
50



AT-110-1 42084100050 UPPER
 PO1013114-03 PLATE ASSY.NAME (BUCKET,1-LEVER 2CONT.)



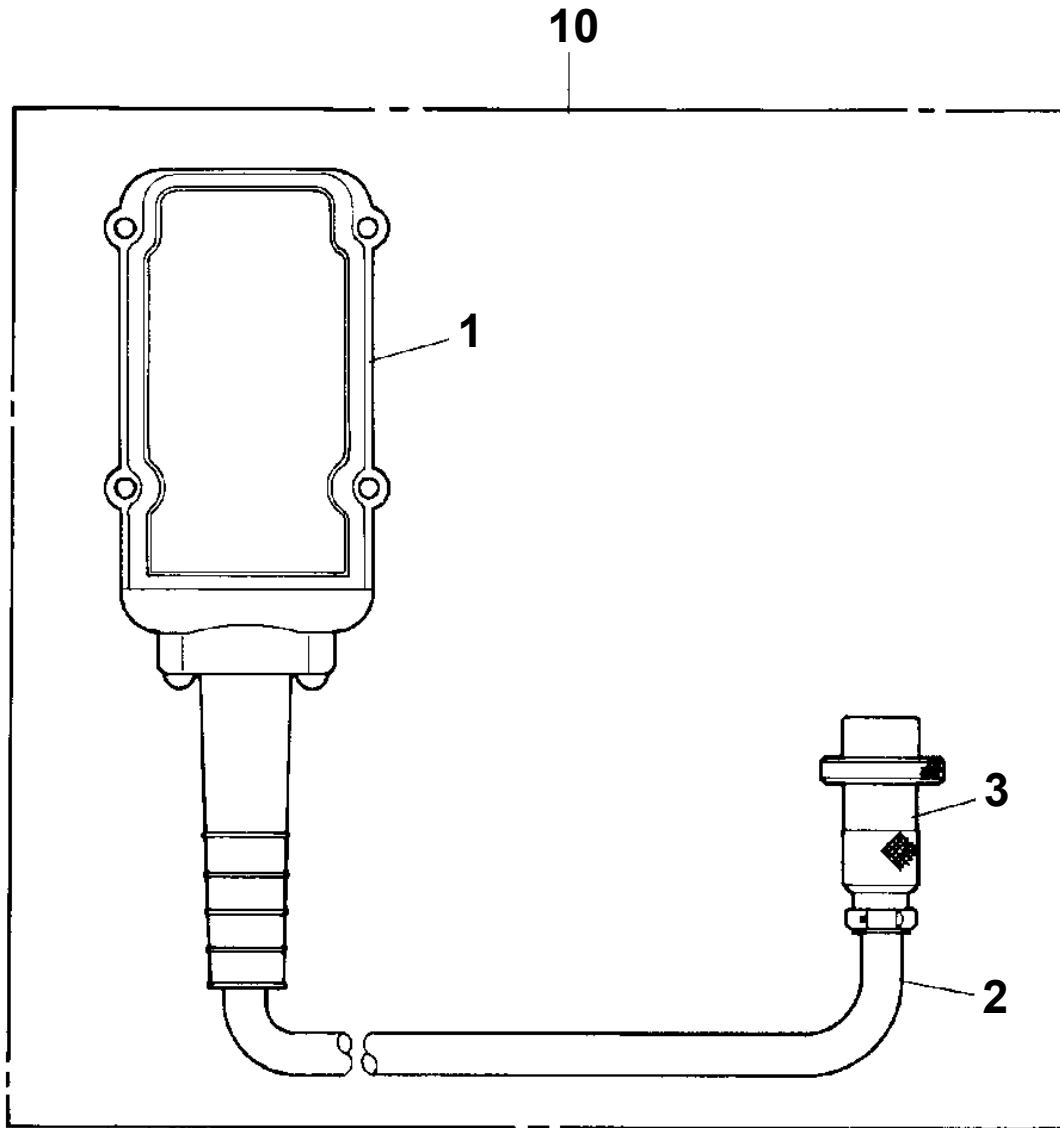
AT-110-1 42084100050 UPPER
PO1013124-01 PLATE ASSY,NAME (OPTION,NON-BOOSTER)



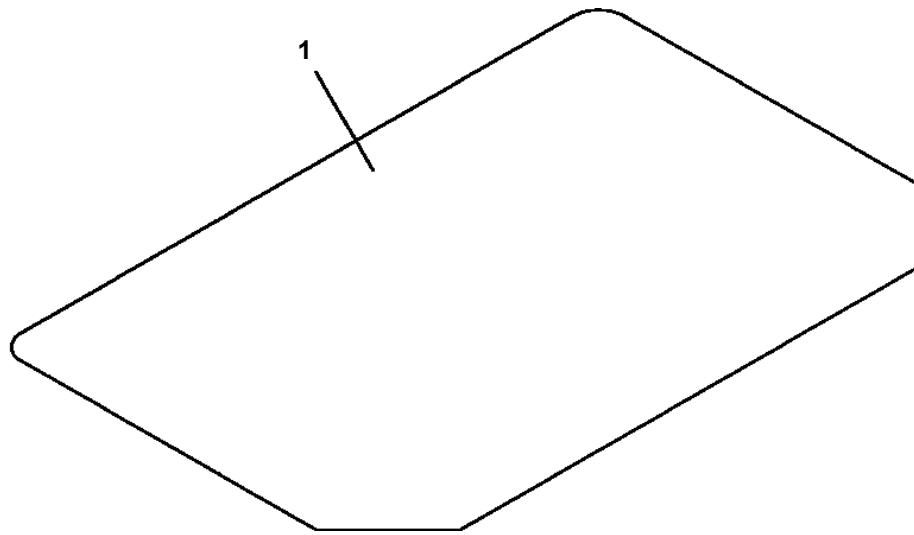
AT-110-1 42084100050 UPPER

Pos No.	Parts No	Parts Name	Qty	Unit	Technical Data	Serial No (Start)	Serial No (End)	Remarks	Pa
2	42470721010	JOINT	2				HK0916		
	37000933940	JOINT	2			HK0917			
3	42470721301	PRUNER	1						
4	80456020410	JOINT,SELF SEALING	1						
5	80456010410	JOINT,SELF SEALING	1						
6	42470721200	HOSE ASSY	1						
7	42470721100	COVER	1						
8	91000590800	O-RING	2		AS568-908	HK0917			
21	42470727530	CAP (DUST)	1						
24	42470727540	CAP (DUST)	1						
26	42470727520	CAP (DUST)	1						
27	42470727510	CAP (DUST)	1						
51	42340017540	CAP	1						
61	42340017530	CAP	1						

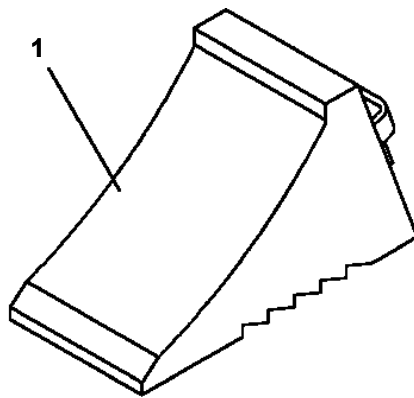
**AT-110-1 42084100050 UPPER
PV1030001-00 SWITCH BOX (FOR BOOSTER)**



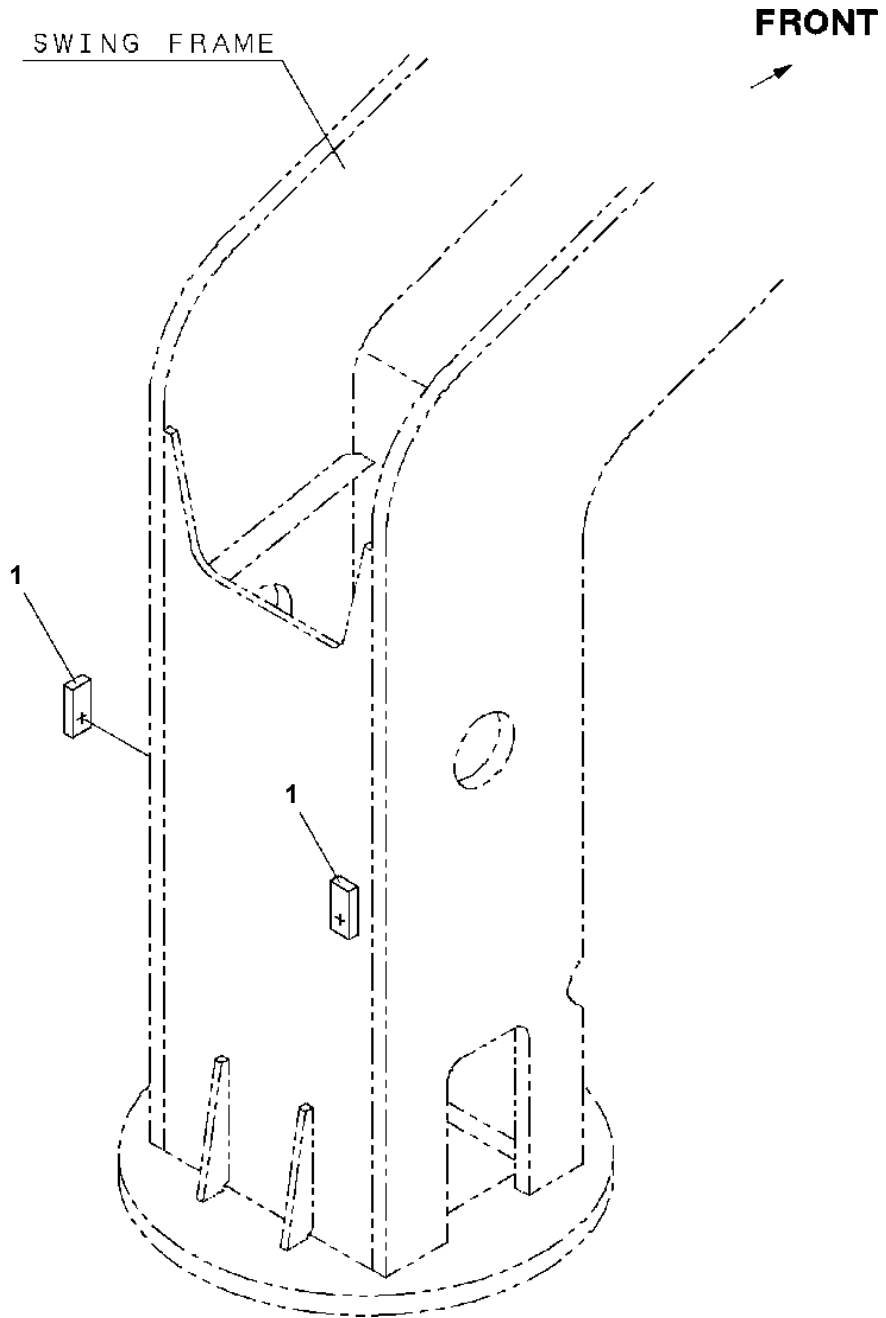
**AT-110-1 42084100050 UPPER
PW1010309-00 ACCESSORIES (MAT)**



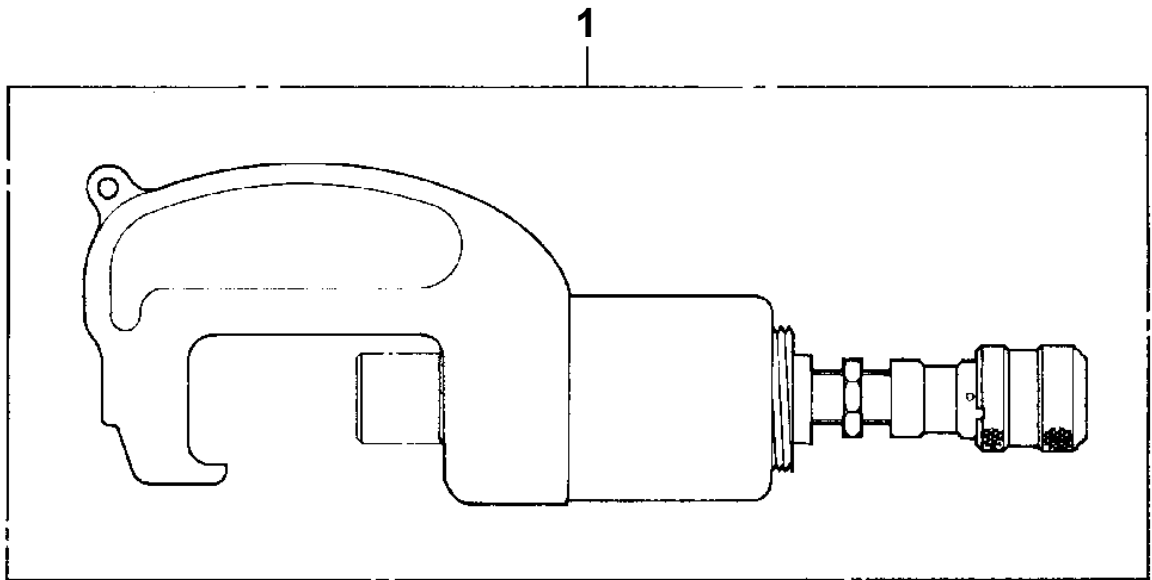
**AT-110-1 42084100050 UPPER
PW5110003-00 WEDGE (STOPPER FOR TIRE/NAKAMURA KIKI)**



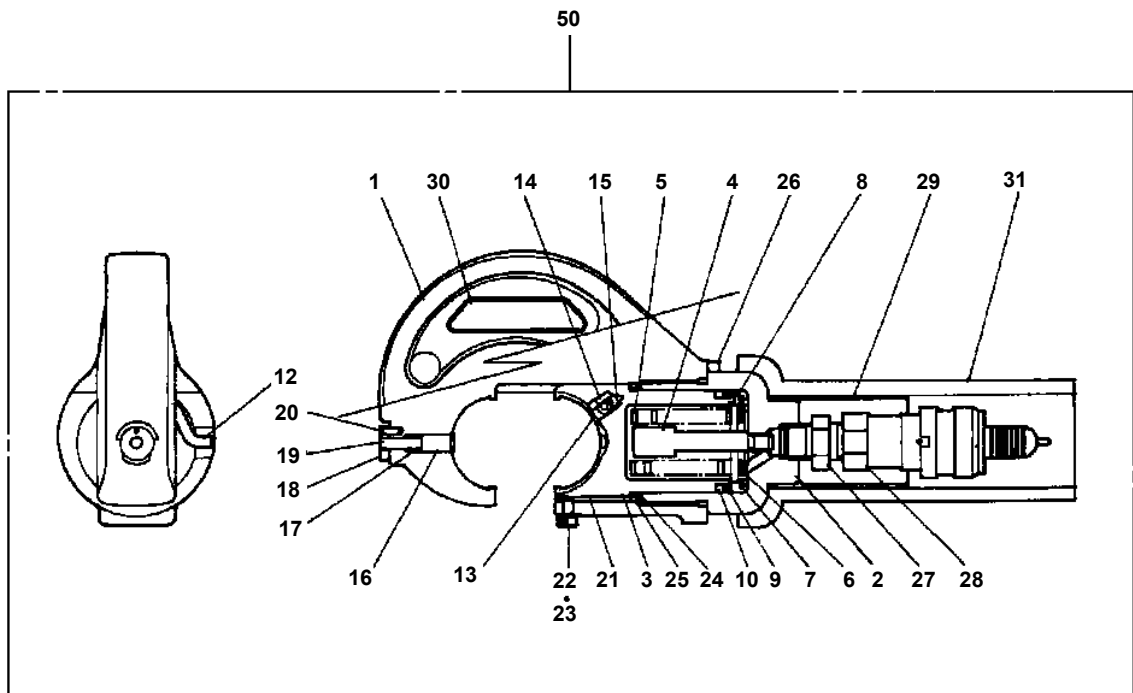
**AT-110-1 42084100050 UPPER
PX1810141-00 MOUNT,SUPPORT**



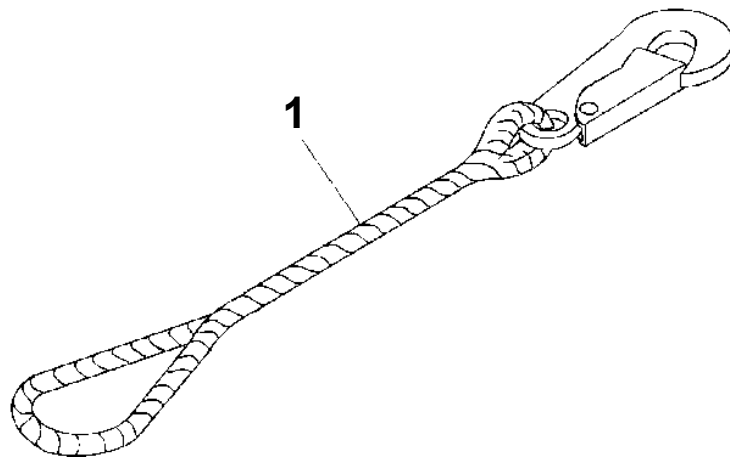
**AT-110-1 42084100050 UPPER
PY1050005-00 CLAMP HEAD (O.D.K 10TON ELECTRIC)**



**AT-110-1 42084100050 UPPER
PY1050012-00 CLAMP HEAD (SANWA,12TON,TITANIUM)**



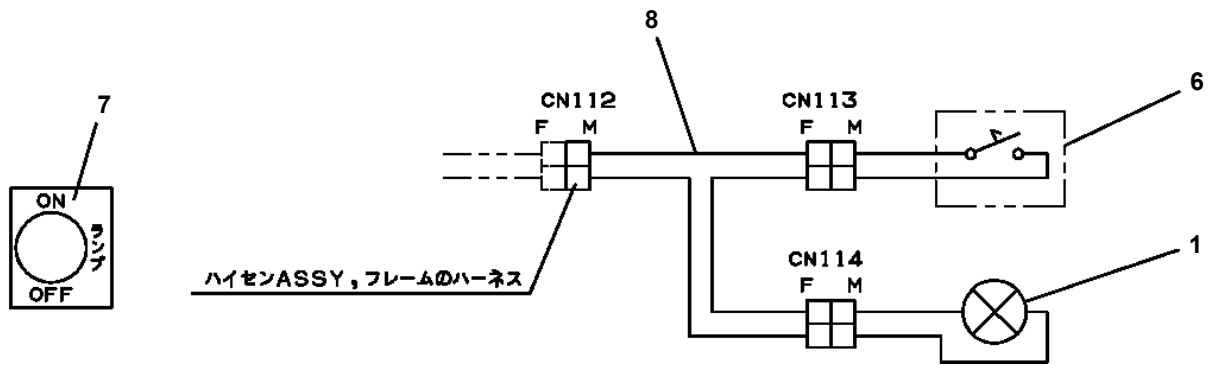
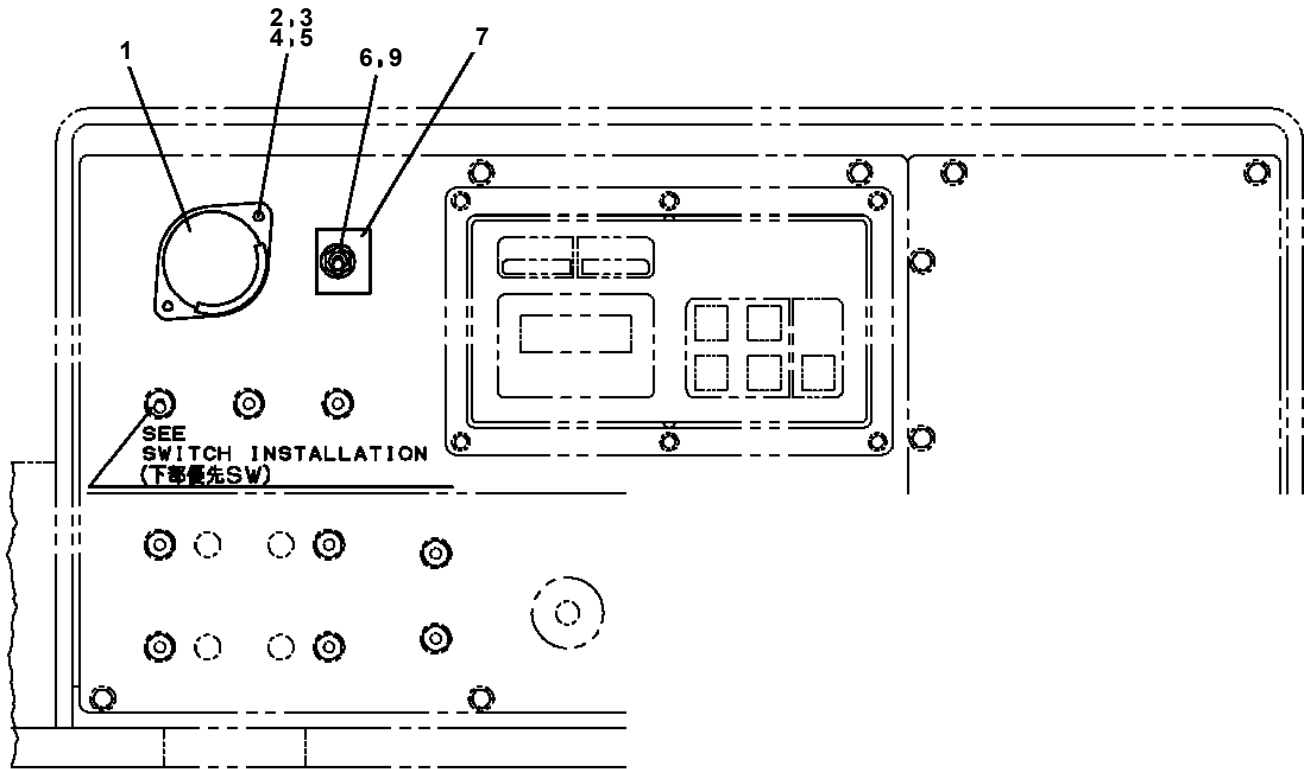
**AT-110-1 42084100050 UPPER
PY1070001-00 ROPE (SAFETY,1.5M,WITH HOOK)**



**AT-110-1 42084100050 UPPER
PY1160172-00 BOOSTER (AIR/40TON,PULSE)**

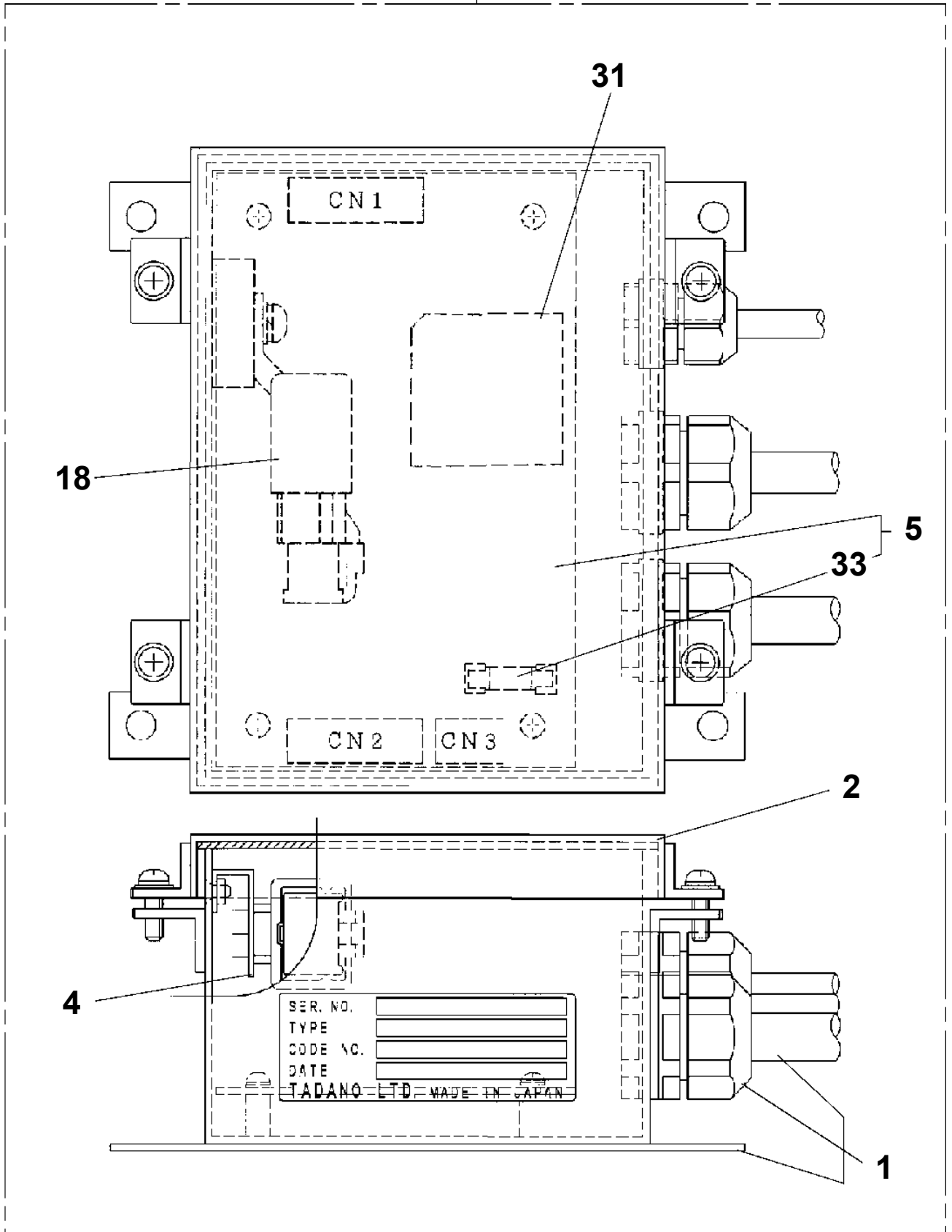
1	ブースタ BOOSTER
2	プレートASSY,ネーム PLATE ASSY,NAME
3	パイピング,アウトレット(ブーム/スイング フレーム) PIPING,OUTLET (BOOM/SWING FRAME)
4	パイピング,ハイドロリック アウトレット(ロー) PIPING,HYDRAULIC OUTLET (LOWER)
5	スイッチ インスタレーション SWITCH INSTALLATION
8	コントロール ユニット CONTROL UNIT
9	マウント,サポート MOUNT,SUPPORT

AT-110-1 42084100050 UPPER
 PY1180282-03 LAMP (LOWER CONTROL PANEL)

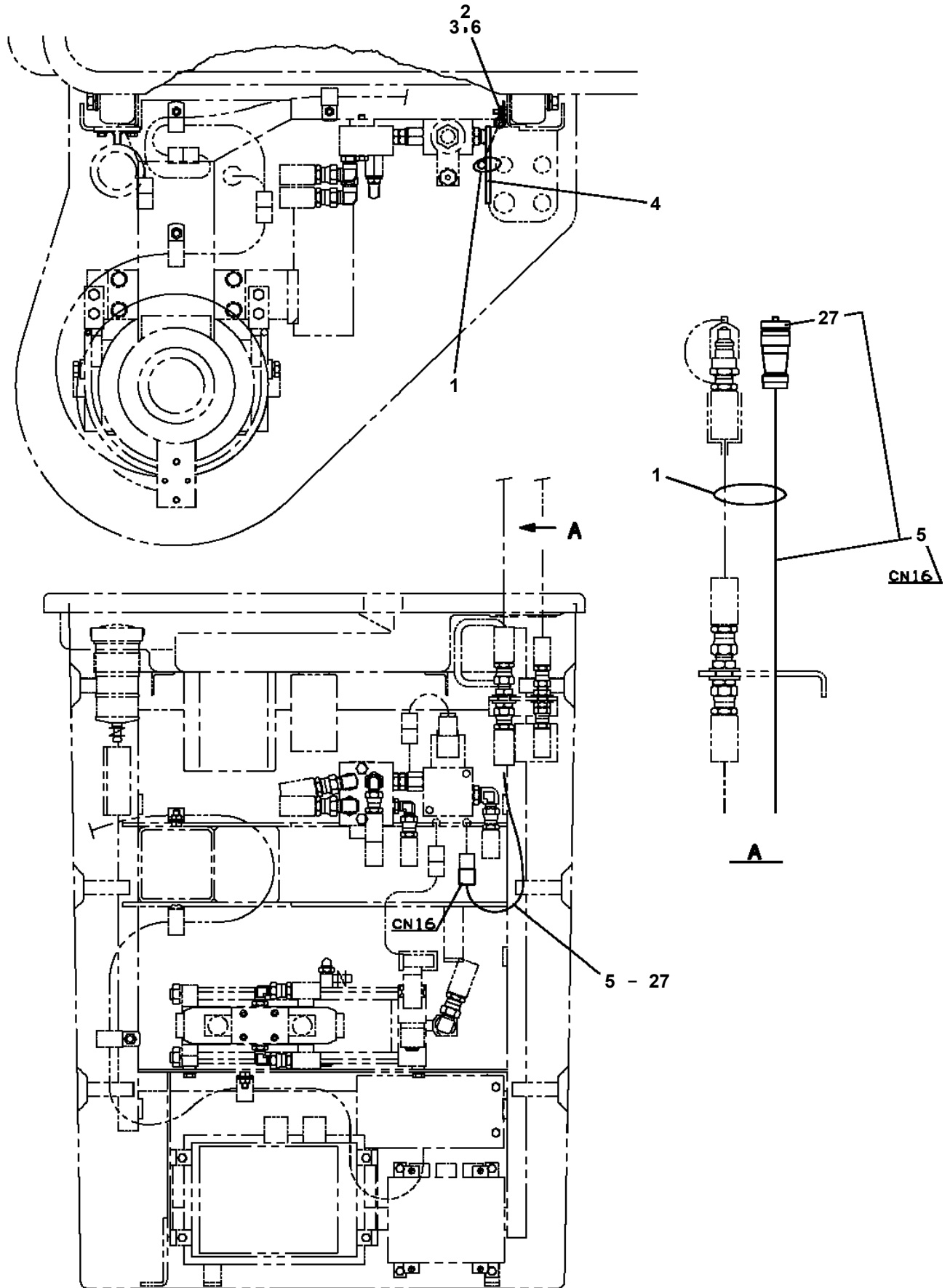


AT-110-1 42084100050 UPPER
PY1240022-00 CONTROL UNIT (BOOSTER)

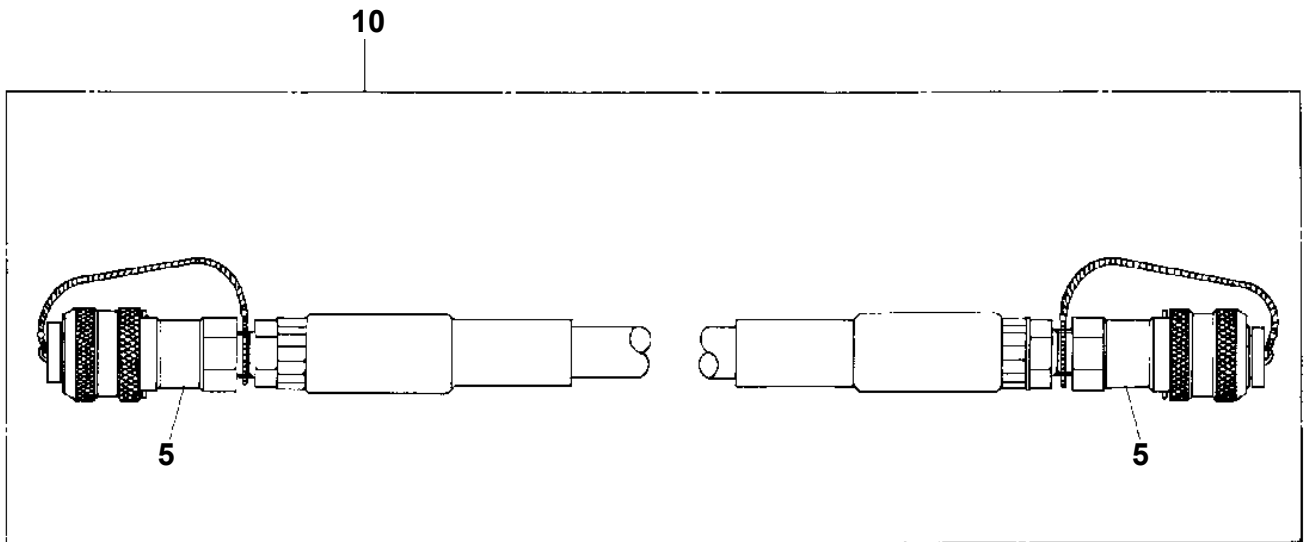
50



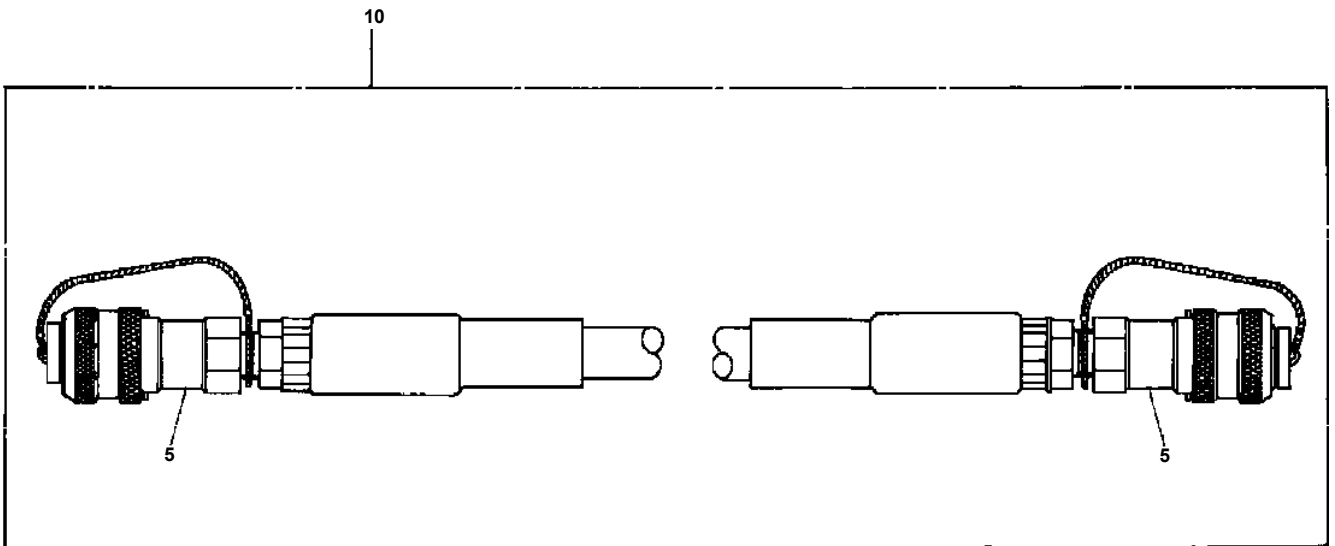
**AT-110-1 42084100050 UPPER
PY1250024-01 SWITCH INSTALLATION**



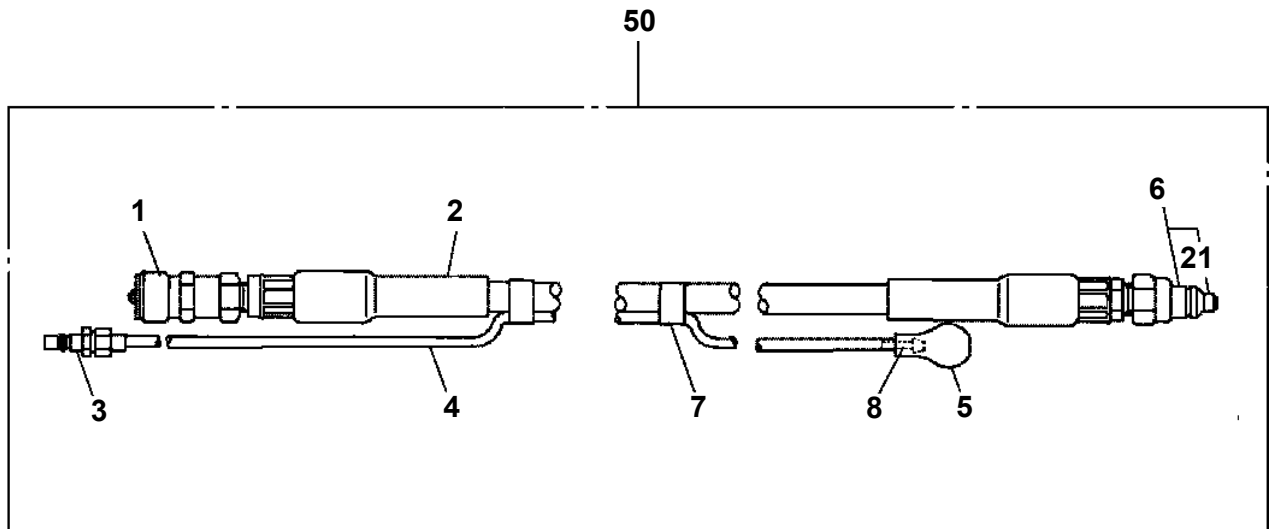
**AT-110-1 42084100050 UPPER
PY1590001-01 HOSE,BOOSTER (FEMALE-FEMALE,3M)**



**AT-110-1 42084100050 UPPER
PY1590007-00 HOSE,BOOSTER (FEMALE-FEMALE,5M)**



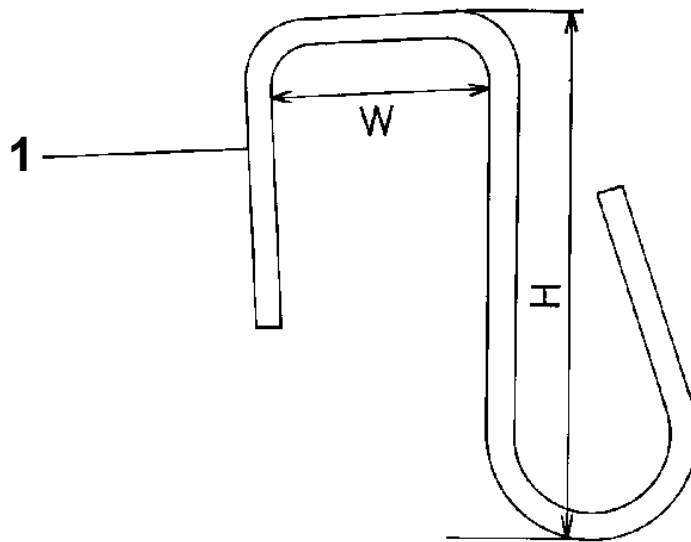
**AT-110-1 42084100050 UPPER
PY1590013-00 HOSE,BOOSTER (WITH AIR BALLOON,8M)**



**AT-110-1 42084100050 UPPER
PY1790001-00 HANGER (FOR BUCKET)**

Assembly Name HANGER

1117 0001 00



CLICK HERE TO **DOWNLOAD** THE COMPLETE MANUAL

- Thank you very much for reading the preview of the manual.
- You can download the complete manual from: www.heydownloads.com by clicking the link below



- Please note: If there is no response to CLICKING the link, please download this PDF first and then click on it.

CLICK HERE TO **DOWNLOAD** THE COMPLETE MANUAL