

AT-100-5 42063532338 UPPER,LOWER,HINO TKG-XZU675M-TQMQC3

PB0000275-02 UPPER STRUCTURE SYSTEM

PB0000500-02 LOWER STRUCTURE SYSTEM

ASSEMBLY

CLICK HERE TO **DOWNLOAD** THE COMPLETE MANUAL

- Thank you very much for reading the preview of the manual.
- You can download the complete manual from: www.heydownloads.com by clicking the link below



- Please note: If there is no response to CLICKING the link, please download this PDF first and then click on it.

CLICK HERE TO **DOWNLOAD** THE COMPLETE MANUAL

AT-100-5 42063532338 UPPER,LOWER,HINO TKG-XZU675M-TQMQC3

PX5780155-00 MOUNT ASSY,TOOL BOX (LEFT:SLIDE,RIGHT:2-DECKER)

PX5820123-00 MOUNT ASSY,WEIGHT

PY1001858-02 OPTION UNIT,1 (UPPER)

PY1070000-00 ROPE (SAFETY,YELLOW:TD-TYPE)

PY1070001-00 ROPE (SAFETY,1.5M,WITH HOOK)

PY1090001-00 BELT,SAFETY

PY1760001-00 STEP,BUCKET

PY1930004-00 BLOCK,RUBBER (WAZUMI)

PY1930005-00 BLOCK,RUBBER (NAKAMURA)

PY2000288-00 OPTION UNIT,2 (UPPER)

PY2120005-00 BOX,TOOL (FOR BUCKET,FRP)

PY4000061-02 OPTION UNIT,1 (LOWER)

PY5020165-00 ACCESSORIES ASSY (WITHOUT BLOCK,RUBBER)

PY5310003-00 AUTOMATIC MOTION CONTROLLER

PZ0000000-00 MOUNT ASSY,ROLLER

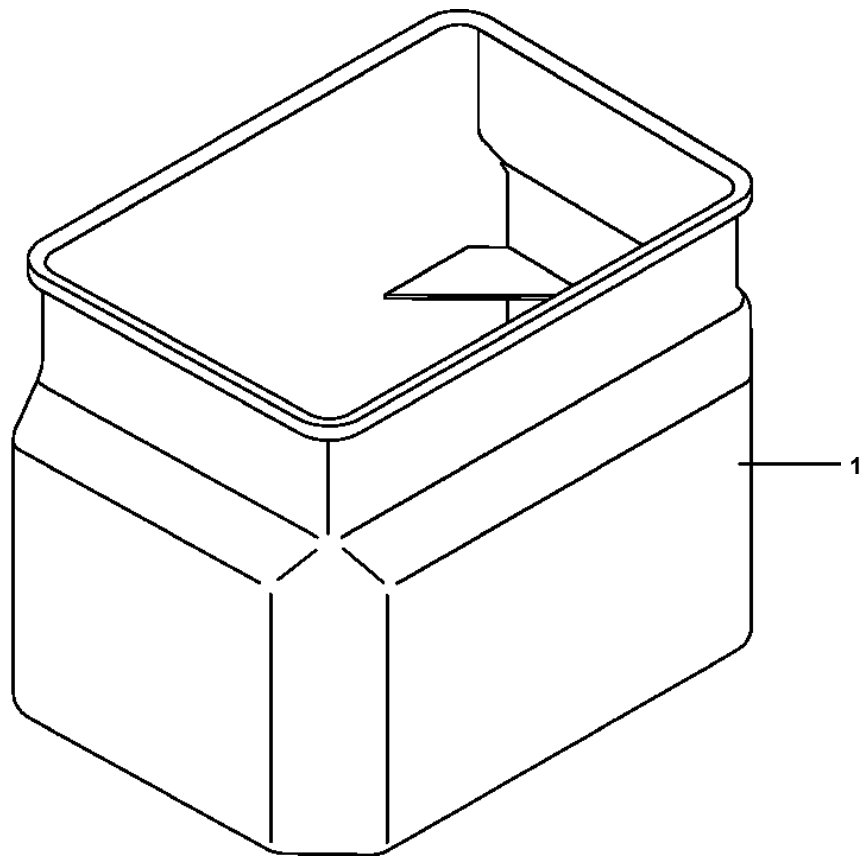
AT-100-5 42063532338 UPPER,LOWER,HINO TKG-XZU675M-TQMQC3

Pos No.	Parts No	Parts Name	Qty	Unit	Technical Data	Serial No (Start)	Serial No (End)	R
2	36652620000	PUMP,HYDRAULIC (EMERGENCY)	1					
3	91810130250	FASTENER	1					
21	42823560101	COVER (WITH ROPE)	1					

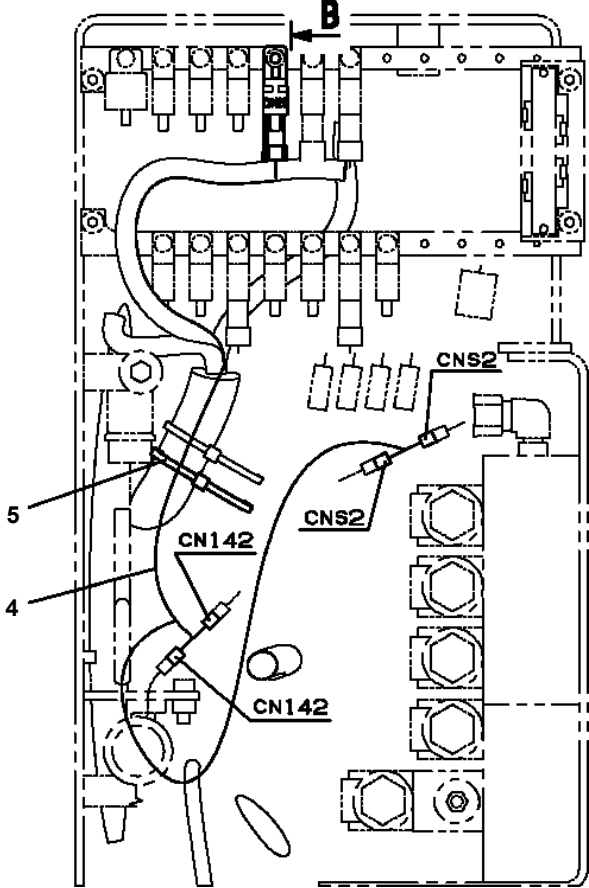
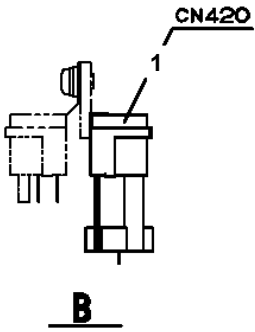
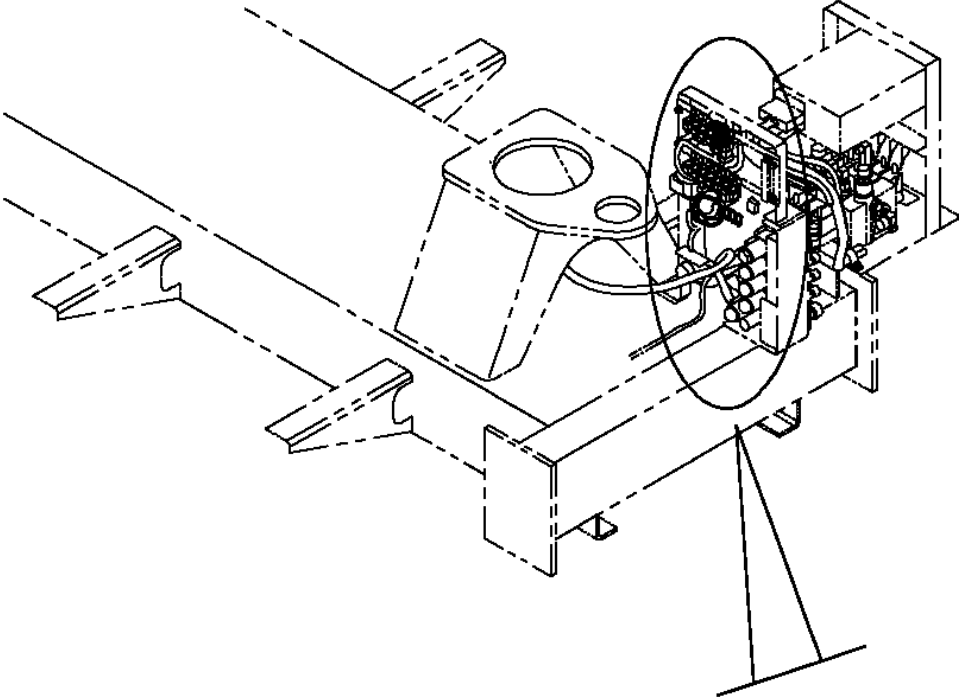
AT-100-5 42063532338 UPPER,LOWER,HINO TKG-XZU675M-TQMQC3

Pos No.	Parts No	Parts Name	Qty	Unit	Technical Data	Serial No (Start)	Serial No (End)
1	42203049510	BOOM,BASE	1				
2	42203062000	BOOM,2ND	1				
3	42203061000	BOOM, TOP	1				
5	42200484100	PLATE	N		T=0.8		
6	42200810020	PIN	1				
7	42202400010	SUPPORT	1				
8	42202400060	ROLLER	2				
9	42202400070	PLATE	2				
11	42202400090	PLATE	N		T=0.5		
13	42202400130	PLATE	N		T=0.5		
14	42202400140	PLATE	12		T=0.8		
15	42202400160	PLATE	N		T=0.8		
17	42202980200	SHEAVE ASSY	1				
18	31630302000	PLATE	N		T=1.5		
19	31631222000	CAP	4				
20	37000118960	PIN	2				
21	37000136510	PIN	4				
22	37000136530	PIN	2				
23	37000155030	PIN	2				
24	37000181820	PIN	1				
25	37000187050	PIN	1				
26	37000187080	PIN	2				
27	37000401810	BEARING,PLAIN	2				
28	37000558530	PLATE	1		T=9		
29	37000573190	PLATE	N		T=1.0		
31	37000584990	PLATE	N		T=0.8		
32	37001924240	ROPE,WIRE (J-WITEX)	2		8X6.21M		
	37001924210	ROPE,WIRE (TESAC)	2		8X6.21M		
33	37001924270	ROPE,WIRE (J-WITEX) 7X3.36M>	2				
	37001924220	ROPE,WIRE (TESAC)	2		7X3.36M		
34	37002016220	PLATE,SLIDE	2		T=12		HK1784
	37002018500	PLATE,SLIDE	2			HK1785	
35	37002018260	PLATE,SLIDE	2				
36	37002018460	PLATE,SLIDE	2		T=12		
38	37002018510	PLATE,SLIDE	4				
39	37002018540	PLATE,SLIDE	4				HK1784
	37002005260	PLATE,SLIDE	4			HK1785	
40	37002018970	PLATE,SLIDE	4		T=10		
41	37002018980	PLATE,SLIDE	2		T=12		
42	37002018530	PLATE,SLIDE	2		T=25		
43	37010101720	PIN	1				
44	80136363056	PIN,SPLIT	1		6.3X56		
45	80184306012	SCREW,MACHINE	6		M6X12		
46	80601110200	RING,RITAINING	6		S20		
47	80602110300	RING,RITAINING	7		R30		
48	80801003025	BEARING,PLAIN	1				
49	82455106000	NIPPLE,GREASE	4		A-M6F FE		
51	90171108020	BOLT	12		M8X20		
52	90171110022	BOLT	4		M10X22		
53	90171110025	BOLT	12		M10X25		
54	90171208030	BOLT	8		M8X30		
55	90172110020	BOLT,HEXAGON SOCKET	2		M10X20		
56	90202481200	NUT	8		M12		
57	90238403008	NUT,CASTLE	1		M30X2		
59	90302040801	WASHER,SPRING	20		8		
60	90302041001	WASHER,SPRING	14		10		
61	90303071001	WASHER,PLAIN	12		10		
62	90303073001	WASHER,PLAIN	1		30		
63	90171110020	BOLT	4		M10X20		
64	37002018480	PLATE,SLIDE	2				
65	37000584970	PLATE	N		T=0.8		
66	90101206016	BOLT	4		M6X16		HK2522
	90172106016	BOLT,HEXAGON SOCKET	4		M6X16	HK2523	

**AT-100-5 42063532338 UPPER,LOWER,HINO TKG-XZU675M-TQMQC3
PB5340006-00 BUCKET (WHITE/WITHOUT BOSS)**



**AT-100-5 42063532338 UPPER,LOWER,HINO TKG-XZU675M-TQMQC3
PB5390006-00 BUZZER ASSY (JACK CONTROL ALARM)**

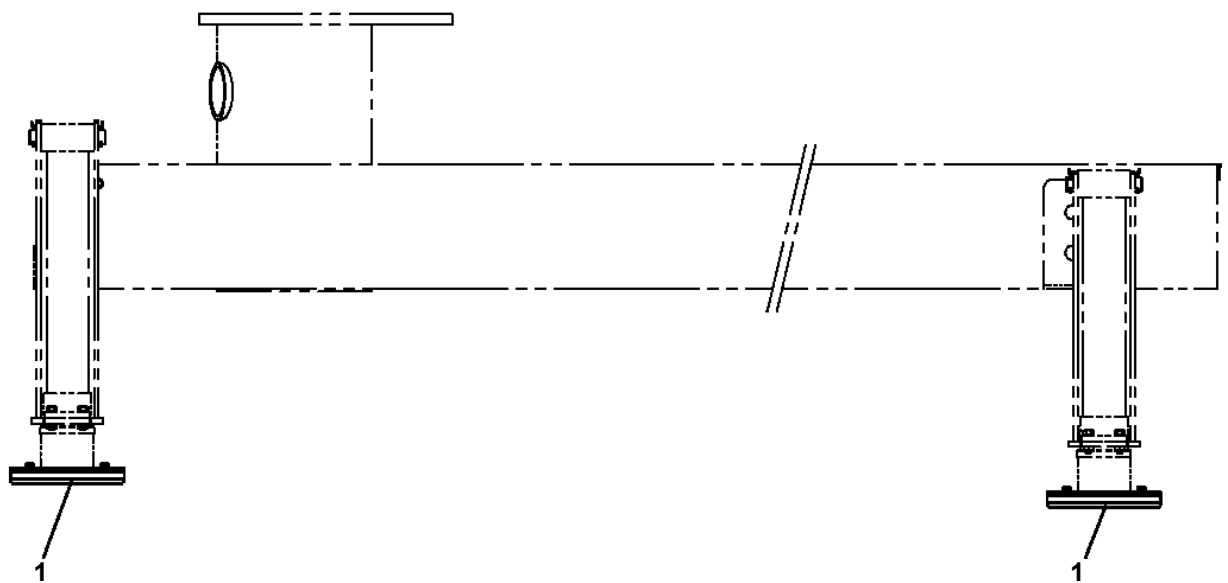
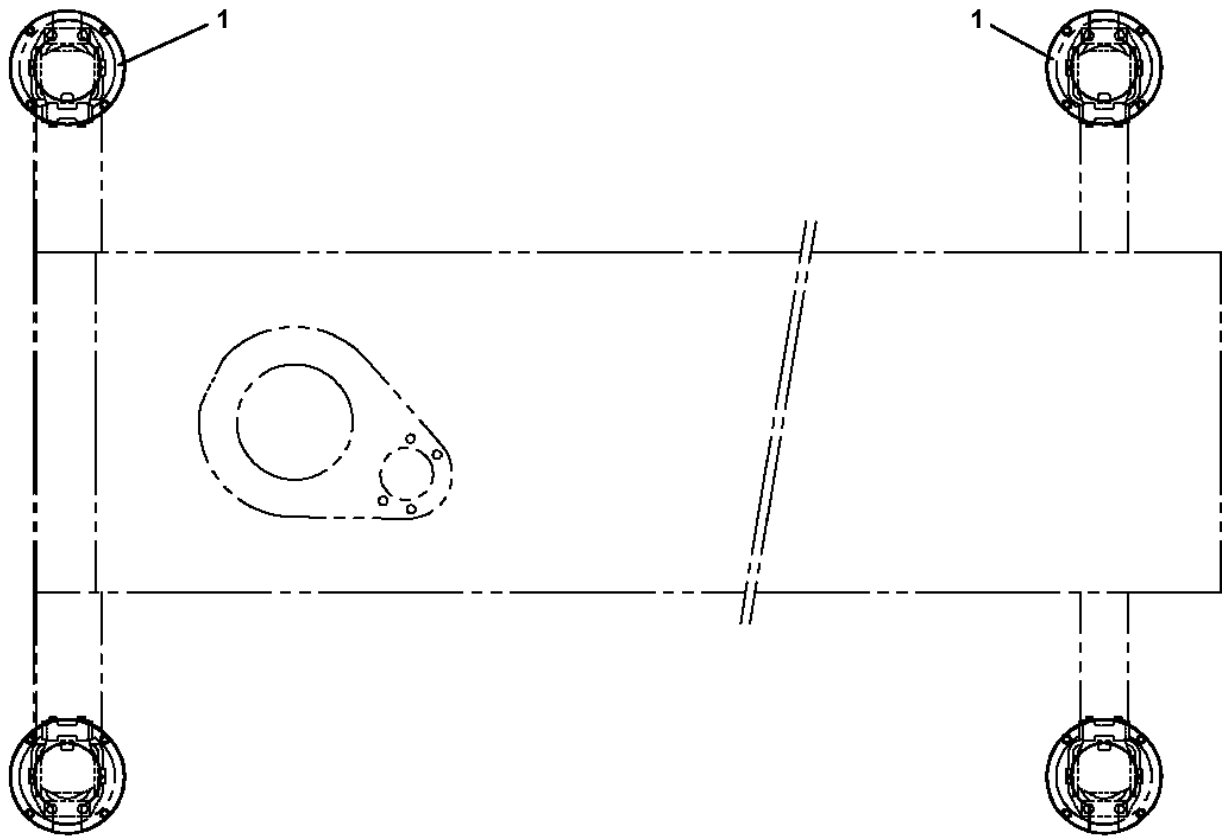


AT-100-5 42063532338 UPPER,LOWER,HINO TKG-XZU675M-TQMQC3

Pos No.	Parts No	Parts Name	Qty	Unit	Technical Data	Serial No (Start)
2	42839117520	DOOR	1			
3	42839117530	DOOR	1			
4	42839117540	DOOR	1			
5	42839117550	MAT	1			
6	42839117630	SUPPORT	4			
7	42836317920	PLATE	5			
8	42836317930	PLATE	5			
9	42835717610	SUPPORT	1			
10	37000512320	PLATE	2			
11	82400000393	INSULATOR	2			
12	42836317950	WEATHER STRIP	8	M		
14	42835867870	CATCH	2			
15	42838117510	CATCH	2			
16	42835487650	HINGE	5			
17	82440850090	GAS SPRING	1			
18	42833077610	BUSH	8			
19	42835797580	PLUG (HOLE)	8			
20	42839117570	BOLT SET(M10X16 WITH WASHER+SPRIGWASHER)	2			
21	42835717800	PIN	2			
22	42839117580	SCREW,SET(M6X14 WITH WASHER+WASHERSPRIG)	3			
23	42839117590	SCREW,SET (M6X14 WITH WASHER,SPRING)	2			
24	42839117600	SCREW,SET (M5X14 WITH SPRINGWASHER)	10			
25	42839117610	SCREW,SET (M4X16 WITH WASHER+NUT)	2			
26	42839117620	SCREW,MACHINE (M5X12)	15			
27	82401800080	PLUG (FOR M8)	5			
28	82401800100	PLUG (FOR M10)	2			
100	42839111001	BOX,TOOL	1			

AT-100-5 42063532338 UPPER,LOWER,HINO TKG-XZU675M-TQMQC3
PC1070001-00 FLOAT (JACK PAD:VERTICALLY TYPE F/J)

FRONT ←



AT-100-5 42063532338 UPPER,LOWER,HINO TKG-XZU675M-TQMQC3
PC5390017-00 CONTROL ASSY,OUTRIGGER (JACK HORIZONTAL+SLOPES ALARM)

コントロールASSY,アウトリガ (ジャッキシフトウスイヘイ+ケイシヤチケイホウ)
CONTROL ASSY,OUTRIGGER (JACK HORIZONTAL+SLOPES ALARM)

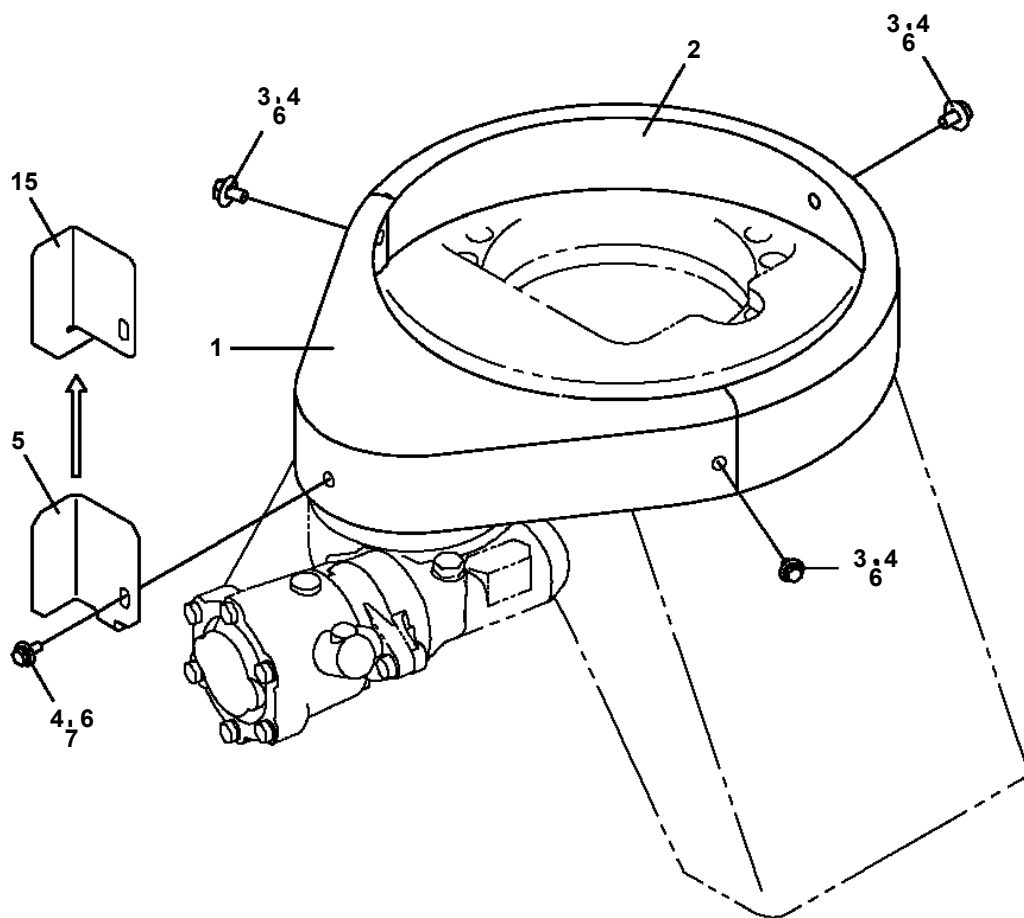
ジャッキ自動水平 (伸び側合わせ) (車体傾斜警報有り)

指示番号 KEY NO.	部品名称 PART NAME	備考 REMARK
1	ハイセンASSY ELEC.ASSY	傾斜地警報
4	ハイカンASSY PIPING ASSY	ジャッキ絞り追加
7	ネームプレートASSY NAME PLATE ASSY	銘板

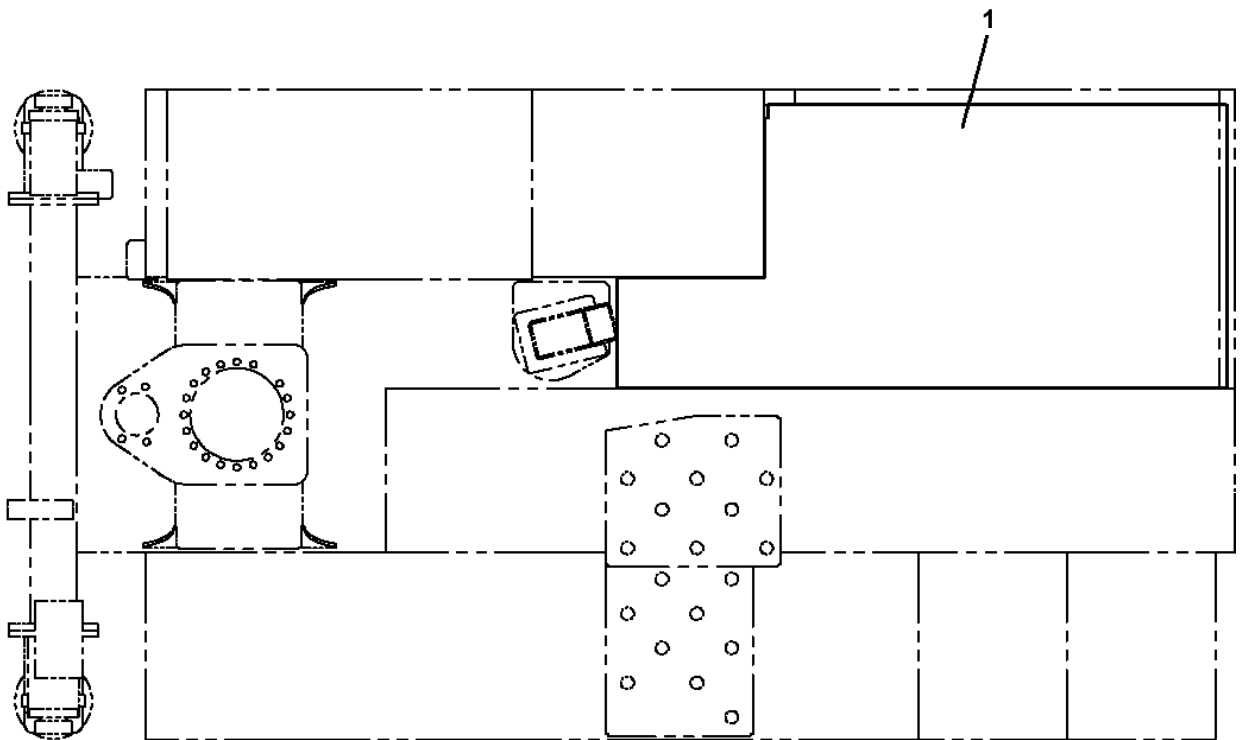
適用製造番号によっては取り付けがないものもあります。

MACHINES OF SOME SERIAL NO. ARE NOT EQUIPPED WITH THESE PARTS.

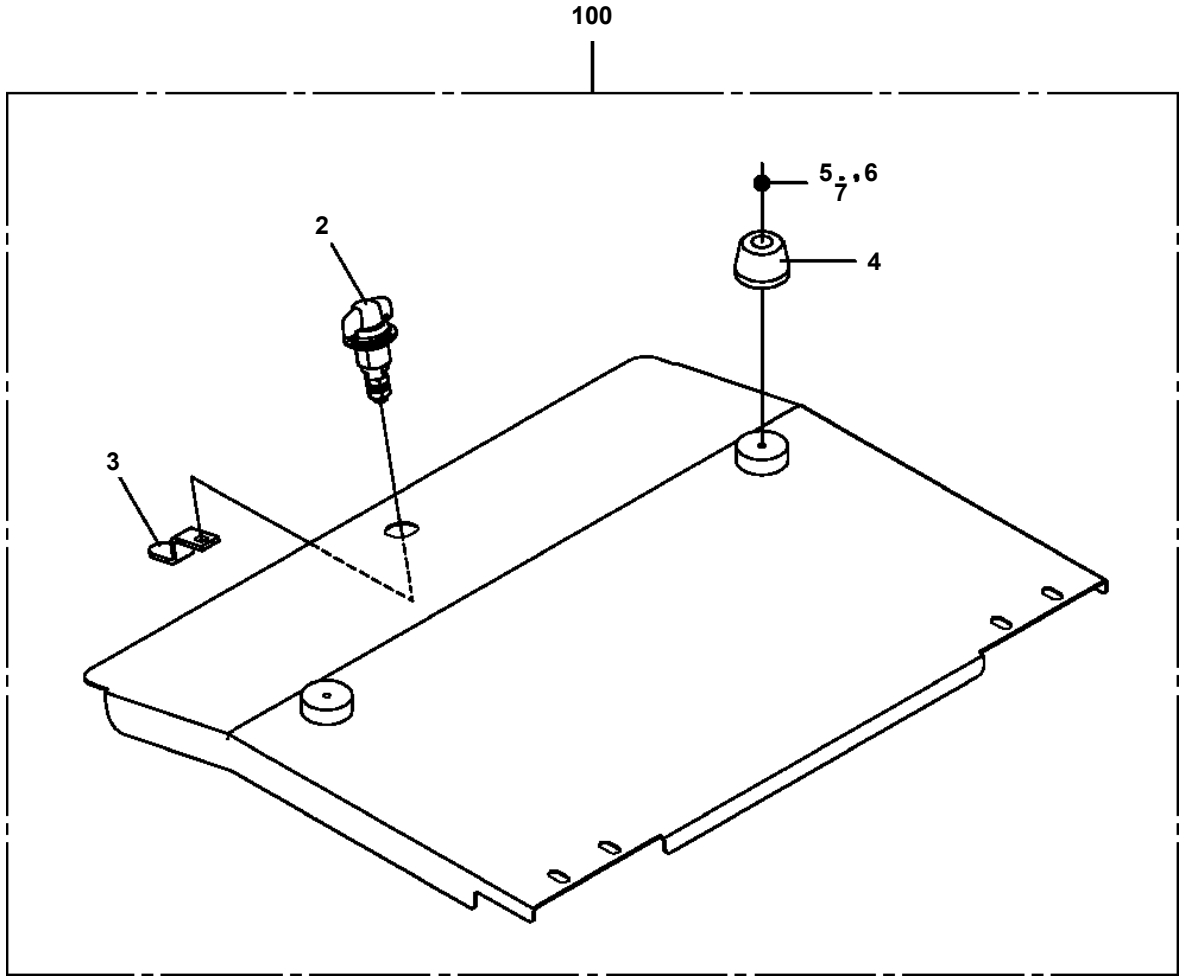
AT-100-5 42063532338 UPPER,LOWER,HINO TKG-XZU675M-TQMQC3
PC5570075-01 COVER ASSY (BEARING)



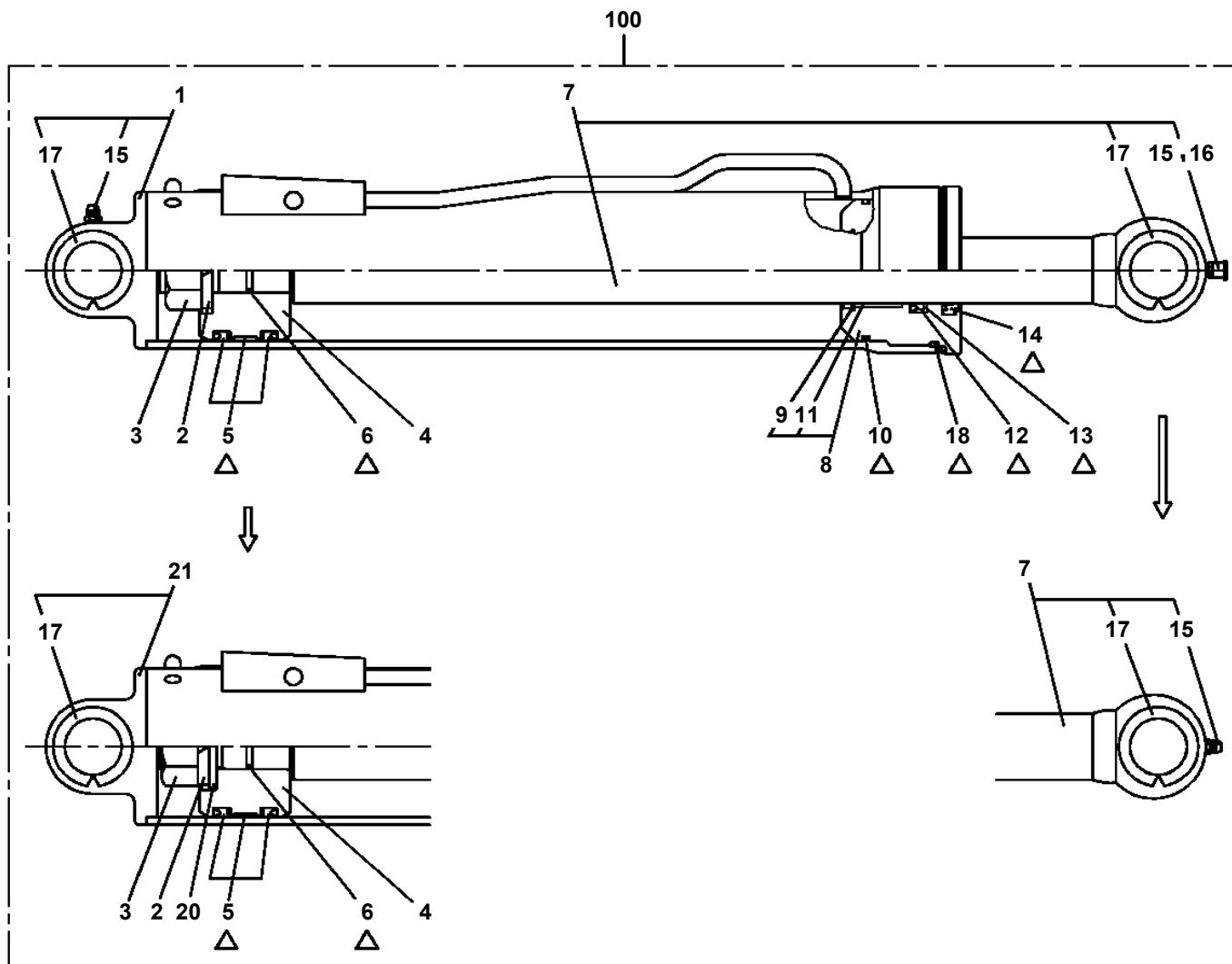
AT-100-5 42063532338 UPPER,LOWER,HINO TKG-XZU675M-TQMQC3
PC5570191-00 COVER ASSY (VEHICLE BED MAT/AT-100TTE-5,INDOOR)



AT-100-5 42063532338 UPPER,LOWER,HINO TKG-XZU675M-TQMQC3
PC5570315-00 COVER ASSY

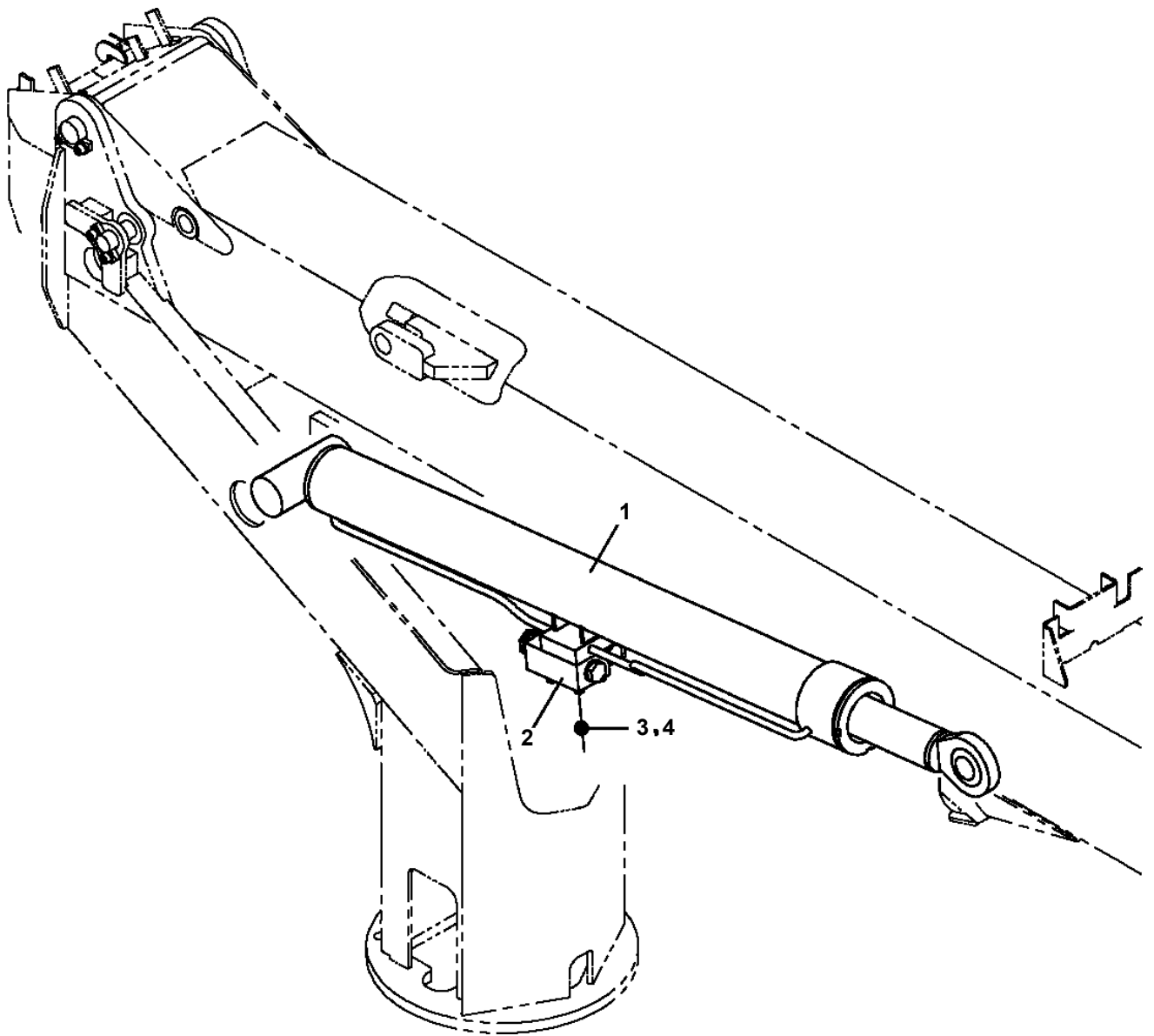


**AT-100-5 42063532338 UPPER,LOWER,HINO TKG-XZU675M-TQMQC3
PC6400012-01 CYLINDER ASSY,LEVELING**

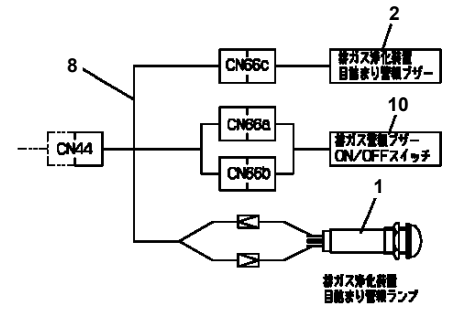
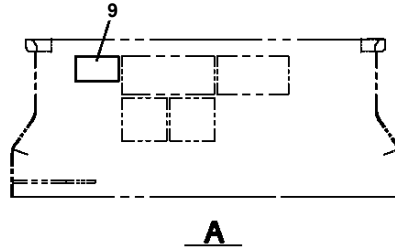
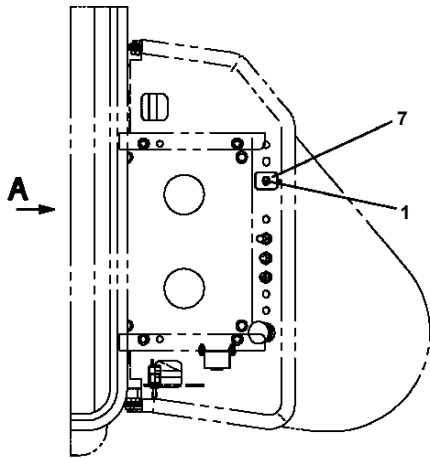


△:PACKING SET KEY NO.41 (KEY NO.5,6,10,12,13,14,18)

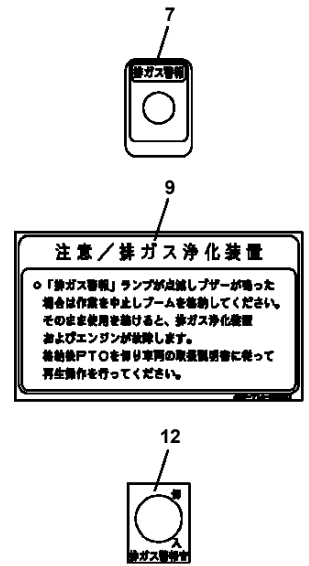
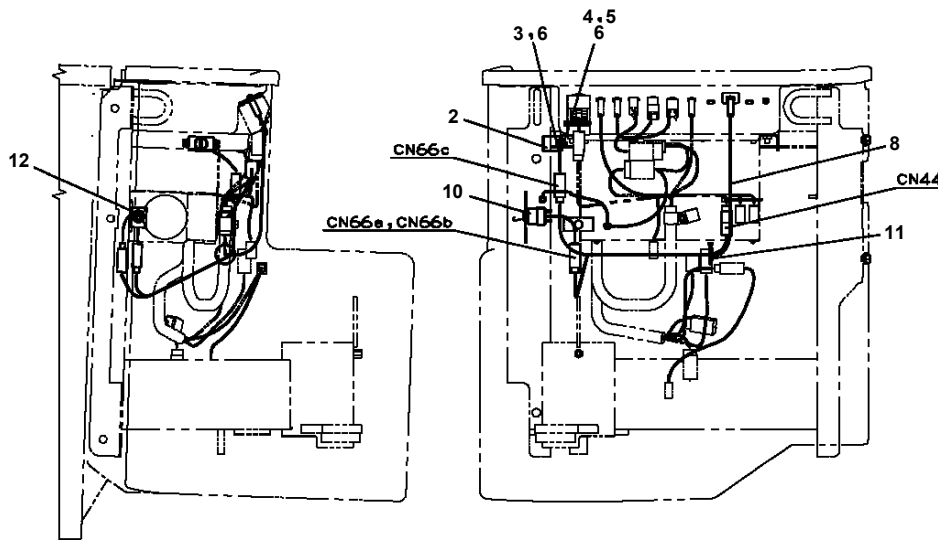
AT-100-5 42063532338 UPPER,LOWER,HINO TKG-XZU675M-TQMQC3
PD5020010-00 DERRICK ASSY



AT-100-5 42063532338 UPPER,LOWER,HINO TKG-XZU675M-TQMQC3
 PE5020439-00 ELEC.ASSY (EXHAUST GAS ALARM:TTE)



接続詳細



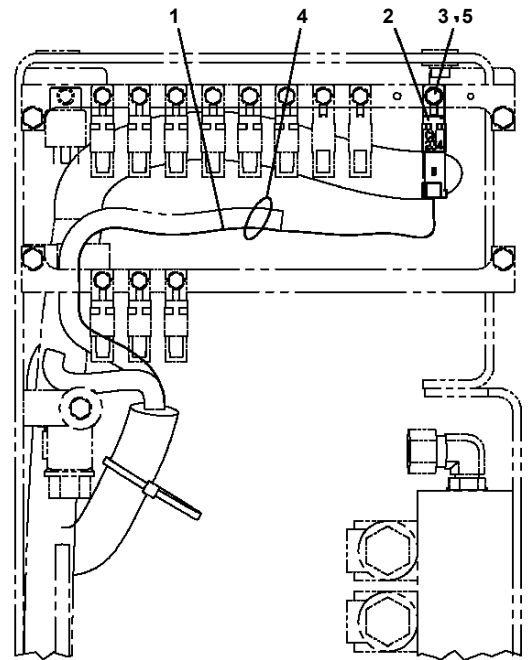
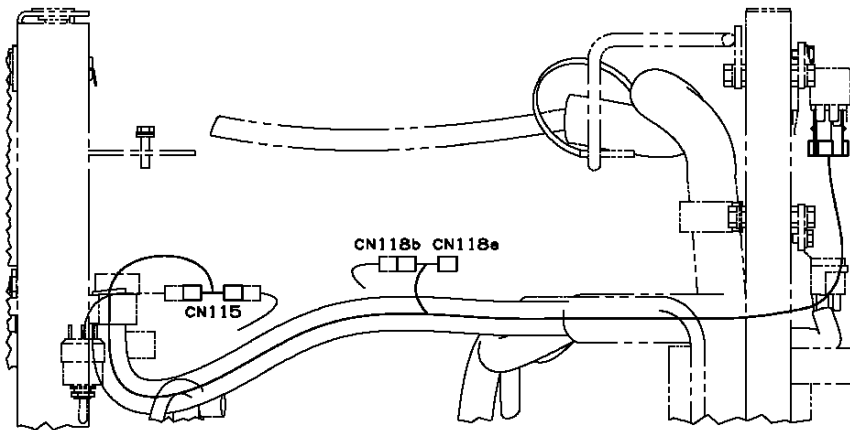
注意/排ガス浄化装置

- 「排ガス警報」ランプが点滅しブザーが鳴った場合は作業を中止しブームを巻戻してください。そのまま使用を続けると、排ガス浄化装置およびエンジンが故障します。巻戻後PTOを降り車両の取組説明書に従って再生動作を行ってください。

AT-100-5 42063532338 UPPER,LOWER,HINO TKG-XZU675M-TQMQC3

Pos No.	Parts No	Parts Name	Qty	Unit	Technical Data	Serial No (Start)	Serial No (End)	Remark
1	42512381100	HARNESS (PTO FAIL SAFE)	1					
2	34354781710	RELAY (WITH BRACKET)	3					

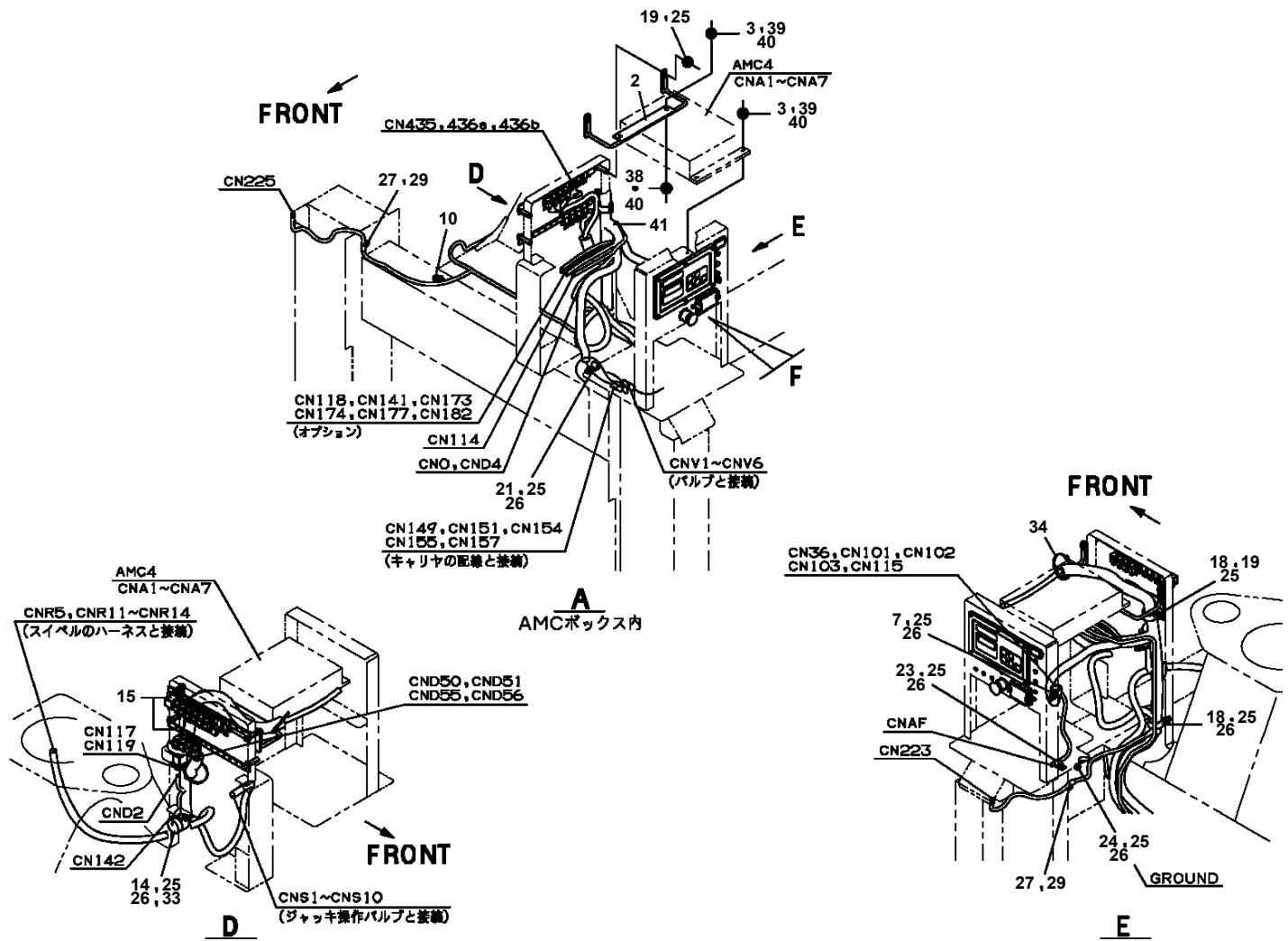
**AT-100-5 42063532338 UPPER,LOWER,HINO TKG-XZU675M-TQMQC3
PE5021023-00 ELEC.ASSY (EMERGENCY SW FUNCTION LIMIT CIRCUIT)**



AT-100-5 42063532338 UPPER,LOWER,HINO TKG-XZU675M-TQMQC3

Pos No.	Parts No	Parts Name	Qty	Unit	Technical Data	Serial No (Start)	Serial No (End)
1	42355791000	DETECTOR,ANGLE	1				
2	80172805014	SCREW,MACHINE	2		M5X14		HK2815
	80192485014	SCREW,MACHINE (WITH WASHER)	2		M5X14	HK2816	
3	90303520501	WASHER,PLAIN	4		5		HK2815
	90303070501	WASHER,PLAIN	2		5	HK2816	
4	90201500500	NUT	2		M5		HK2815
	90201200500	NUT	2		M5	HK2816	
5	90302510501	WASHER,SPRING	2		5		HK2815
6	42357400101	PLATE	1		T=1		
7	90302040801	WASHER,SPRING	1		8		
8	90180208014	BOLT,BUTTON	1		M8X14		
9	42355790300	SUPPORT	1				
10	82100002002	CLAMP	1		WR6		
11	91810130240	FASTENER	10				
12	90280200800	NUT,FLANGE	1		M8		
13	90750005081	SCREW,SET	1		M5X8		

**AT-100-5 42063532338 UPPER,LOWER,HINO TKG-XZU675M-TQMQC3
PE5110078-00 ELEC.ASSY,FRAME**



AT-100-5 42063532338 UPPER,LOWER,HINO TKG-XZU675M-TQMQC3

Pos No.	Parts No	Parts Name	Qty	Unit	Technical Data	Serial No (Start)	Serial No (End)
1	(*****)	BOOM ASSY	1				
2	(*****)	TELESCOPE ASSY	1				
3	(*****)	PIPING ASSY,BOOM	1				
4	(*****)	CYLINDER,LEVELING (UPPER)	1				
5	(*****)	MOUNT ASSY,COVER	1				
6	(*****)	ELEC.ASSY,BOOM	1				
7	(*****)	DETECTOR,BOOM LENGTH	1				
8	(*****)	COVER ASSY (BOOM TOP FRP COVER)	1				

AT-100-5 42063532338 UPPER,LOWER,HINO TKG-XZU675M-TQMQC3

Pos No.	Parts No	Parts Name	Qty	Unit	Technical Data	Serial No (Start)	Serial No (End)	Remarks	Pages
1	42974320100	GUARD	1						
2	42974320200	GUARD	1						
3	42974320300	GUARD	1						

AT-100-5 42063532338 UPPER,LOWER,HINO TKG-XZU675M-TQMQC3

Pos No.	Parts No	Parts Name	Qty	Unit	Technical Data	Serial No (Start)	Serial No (End)
1	36198680000	AUTOMATIC MOTION CONTROLLER	1				

AT-100-5 42063532338 UPPER,LOWER,HINO TKG-XZU675M-TQMQC3

Pos No.	Parts No	Parts Name	Qty	Unit	Technical Data	Serial No (Start)	Serial No (End)	Remarks	I
1	(*****)	VIEW SYSTEM (MONITOR)	1						0
2	(*****)	VIEW SYSTEM (CAMERA)	1						0

AT-100-5 42063532338 UPPER,LOWER,HINO TKG-XZU675M-TQMQC3

Pos No.	Parts No	Parts Name	Qty	Unit	Technical Data	Serial No (Start)	Serial No (End)	Remarks	Pages
21	42739937511	BRACKET	1						
31	42739937521	HOOD	1						
100	42739931150	CAMERA	1						

AT-100-5 42063532338 UPPER,LOWER,HINO TKG-XZU675M-TQMQC3

Pos No.	Parts No	Parts Name	Qty	Unit	Technical Data	Serial No (Start)	Serial No (End)	Remarks	Pages
100	42509572100	HARNESS	1						

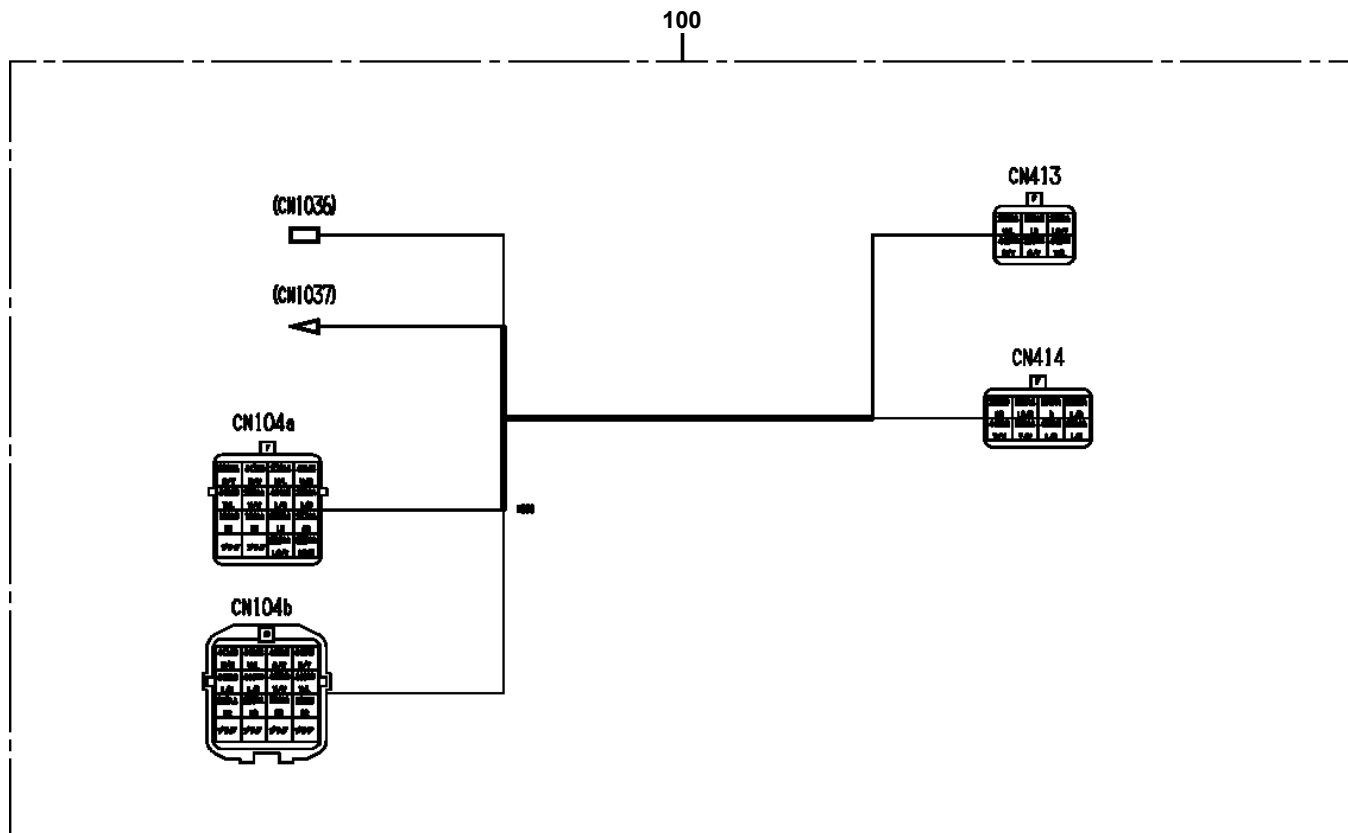
AT-100-5 42063532338 UPPER,LOWER,HINO TKG-XZU675M-TQMQC3

Pos No.	Parts No	Parts Name	Qty	Unit	Technical Data	Serial No (Start)	Serial No (End)	Remarks	Pages
100	42937120300	HARNESS	1						

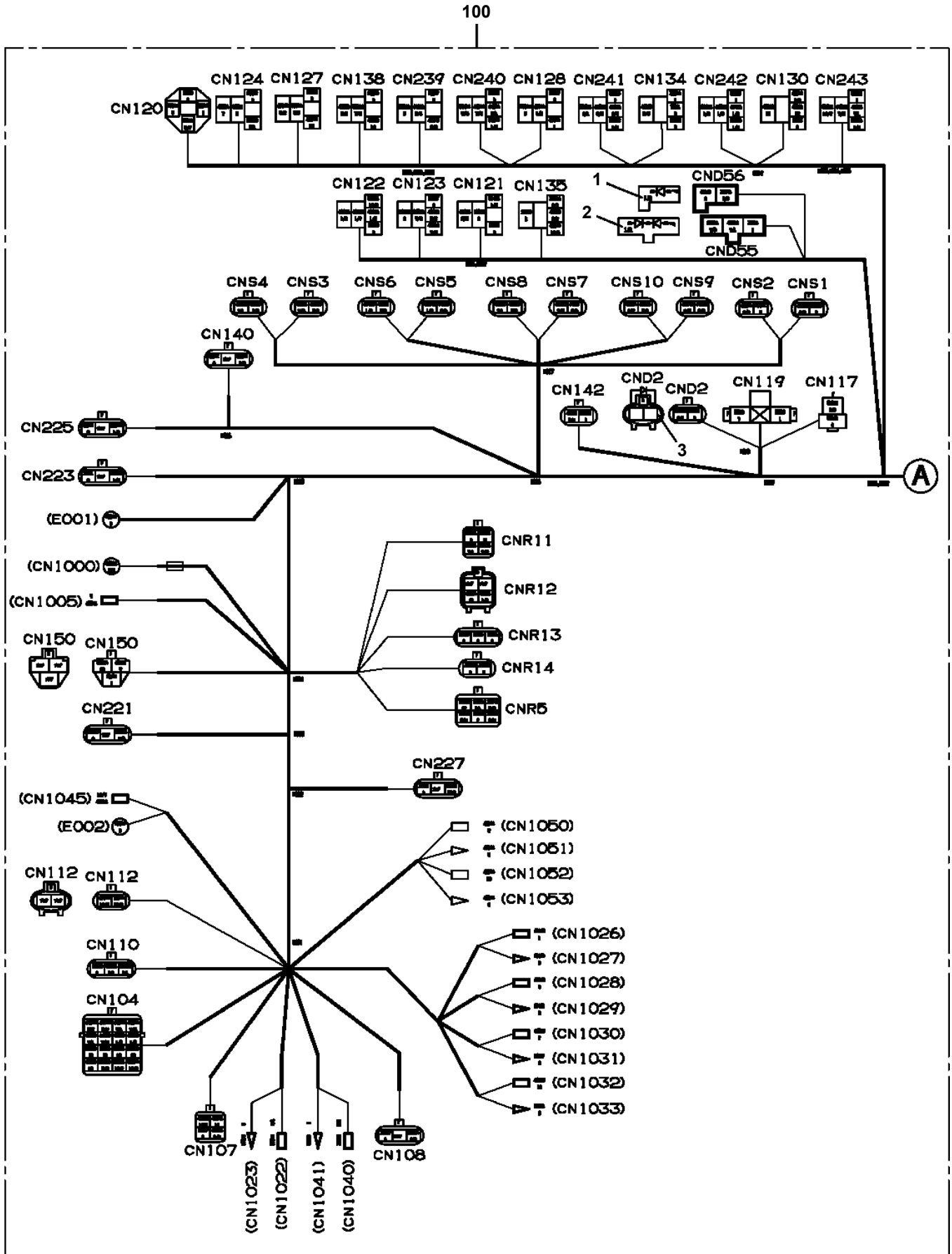
AT-100-5 42063532338 UPPER,LOWER,HINO TKG-XZU675M-TQMQC3

Pos No.	Parts No	Parts Name	Qty	Unit	Technical Data	Serial No (Start)	Serial No (End)	Remarks	Pages
100	42512090100	HARNESS	1						

AT-100-5 42063532338 UPPER,LOWER,HINO TKG-XZU675M-TQMQC3
PH5033412-00 HARNESS (RUNAWAY PREVENTION)



**AT-100-5 42063532338 UPPER,LOWER,HINO TKG-XZU675M-TQMQC3
PH5033725-01 HARNESS (FRAME)**



AT-100-5 42063532338 UPPER,LOWER,HINO TKG-XZU675M-TQMQC3

Pos No.	Parts No	Parts Name	Qty	Unit	Technical Data	Serial No (Start)	Serial No (End)	Remarks	Pages
100	42970430200	HARNESS	1						

AT-100-5 42063532338 UPPER,LOWER,HINO TKG-XZU675M-TQMQC3

Pos No.	Parts No	Parts Name	Qty	Unit	Technical Data	Serial No (Start)	Serial No (End)	Remarks	Pages
100	42501070010	HARNESS	1						

AT-100-5 42063532338 UPPER,LOWER,HINO TKG-XZU675M-TQMQC3

Pos No.	Parts No	Parts Name	Qty	Unit	Technical Data	Serial No (Start)	Serial No (End)	Remarks	Pages
100	42512420100	HARNESS	1						

AT-100-5 42063532338 UPPER,LOWER,HINO TKG-XZU675M-TQMQC3

Pos No.	Parts No	Parts Name	Qty	Unit	Technical Data	Serial No (Start)	Serial No (End)	Remarks	Pages
1	82460027203	HANDLE	1						

AT-100-5 42063532338 UPPER,LOWER,HINO TKG-XZU675M-TQMQC3

Pos No.	Parts No	Parts Name	Qty	Unit	Technical Data	Serial No (Start)	Serial No (End)	Remarks	Pages
1	82460027208	HANDLE	1						

AT-100-5 42063532338 UPPER,LOWER,HINO TKG-XZU675M-TQMQC3

Pos No.	Parts No	Parts Name	Qty	Unit	Technical Data	Serial No (Start)	Serial No (End)	Remarks	Pages
11	91001101200	O-RING	2		1A P12				
23	36624110300	SEAT	2						
24	36624110400	SPRING	2						
26	36624110600	PISTON	1						
28	91001101800	O-RING	2		1A P18				
30	36624111000	PACKING	2						
31	36624111100	O-RING	1		P12				
41	36624110100	BODY	1						
42	36624110200	PLUG	2						
45	36624110501	PLUNGER	2						
100	36624110000	VALVE,CHECK	1						

CLICK HERE TO **DOWNLOAD** THE COMPLETE MANUAL

- Thank you very much for reading the preview of the manual.
- You can download the complete manual from: www.heydownloads.com by clicking the link below



- Please note: If there is no response to CLICKING the link, please download this PDF first and then click on it.

CLICK HERE TO **DOWNLOAD** THE COMPLETE MANUAL

AT-100-5 42063532338 UPPER,LOWER,HINO TKG-XZU675M-TQMQC3

Pos No.	Parts No	Parts Name	Qty	Unit	Technical Data	Serial No (Start)	Serial No (End)	Remarks
1	36672285010	HEAD ASSY	1					
2	36670109511	FILTER,CARTRIDGE	1				HK2666	
	36672580000	FILTER,CARTRIDGE	1			HK2667		
10	36672280000	FILTER,OIL (YAMASHIN)	1					

AT-100-5 42063532338 UPPER,LOWER,HINO TKG-XZU675M-TQMQC3

Pos No.	Parts No	Parts Name	Qty	Unit	Technical Data	Serial No (Start)	Serial No (End)	Remarks	Pages
1	42262250300	BUCKET	1						

AT-100-5 42063532338 UPPER,LOWER,HINO TKG-XZU675M-TQMQC3

Pos No.	Parts No	Parts Name	Qty	Unit	Technical Data	Serial No (Start)	Serial No (End)	R
1	42266920101	BUCKET (WHITE/WITHOUT BOSS)	1					

AT-100-5 42063532338 UPPER,LOWER,HINO TKG-XZU675M-TQMQC3

Pos No.	Parts No	Parts Name	Qty	Unit	Technical Data	Serial No (Start)	Serial No (End)	Rem
1	42266640101	BUCKET (WHITE/DRAIN HOLE)	1					
2	42477661000	MAT	1					

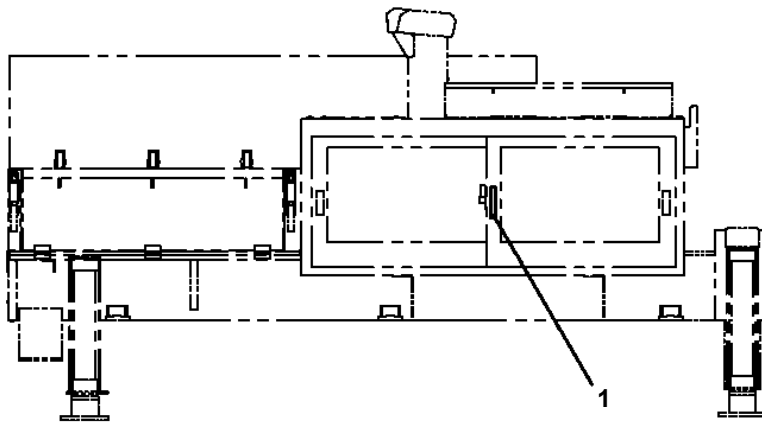
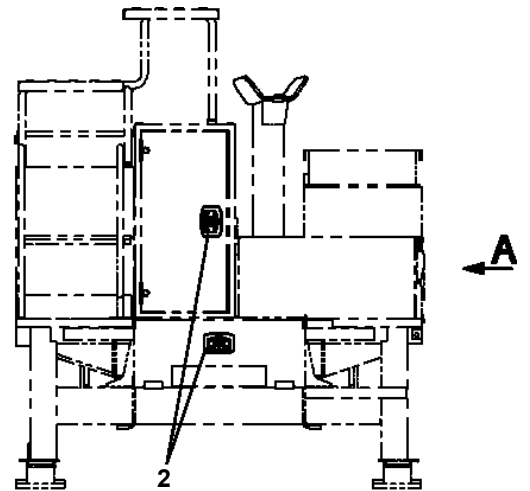
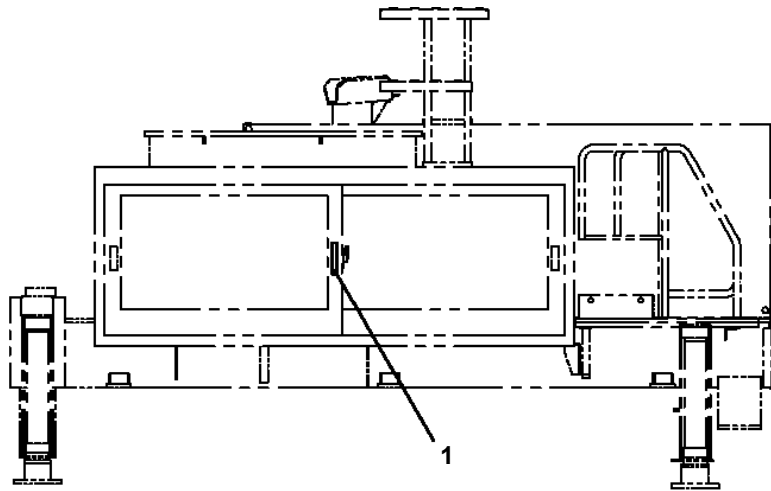
AT-100-5 42063532338 UPPER,LOWER,HINO TKG-XZU675M-TQMQC3

Pos No.	Parts No	Parts Name	Qty	Unit	Technical Data	Serial No (Start)	Serial No (End)	Remarks	Pages
1	82400000312	GROMMET	1		L=1000				

AT-100-5 42063532338 UPPER,LOWER,HINO TKG-XZU675M-TQMQC3

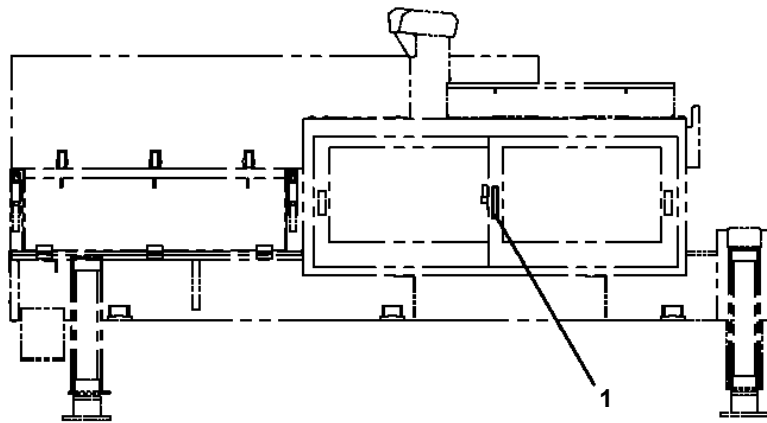
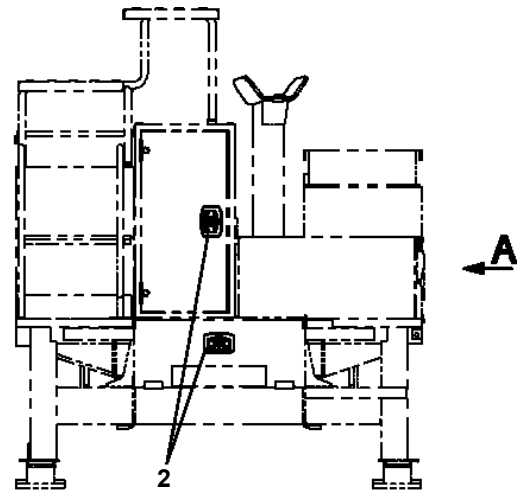
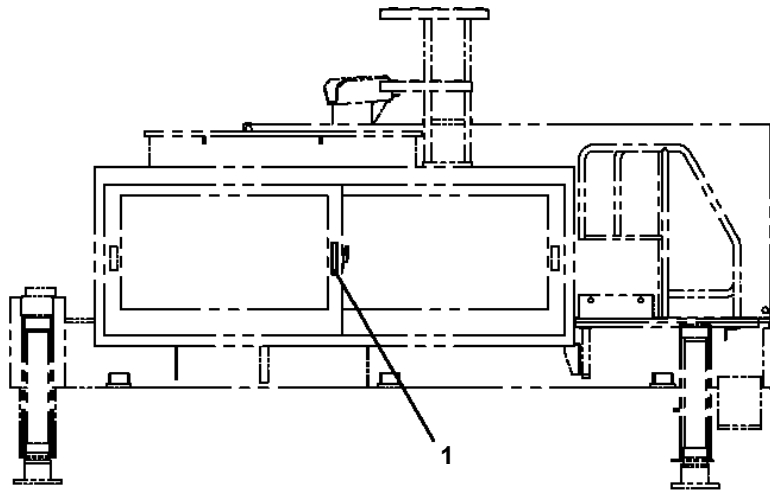
Pos No.	Parts No	Parts Name	Qty	Unit	Technical Data	Serial No (Start)	Serial No (End)	Remarks
1	82199105017	LAMP (ASSY ONLY)	1					
2	90101212020	BOLT	1		M12X20			
3	90302041201	WASHER,SPRING	1		12			
4	37010103570	PIN	1					
100	42510601600	LAMP ASSY (SQUARE TYPE)	1					

AT-100-5 42063532338 UPPER,LOWER,HINO TKG-XZU675M-TQMQC3
PL5270042-00 LOCK ASSY (KEY NO.1)



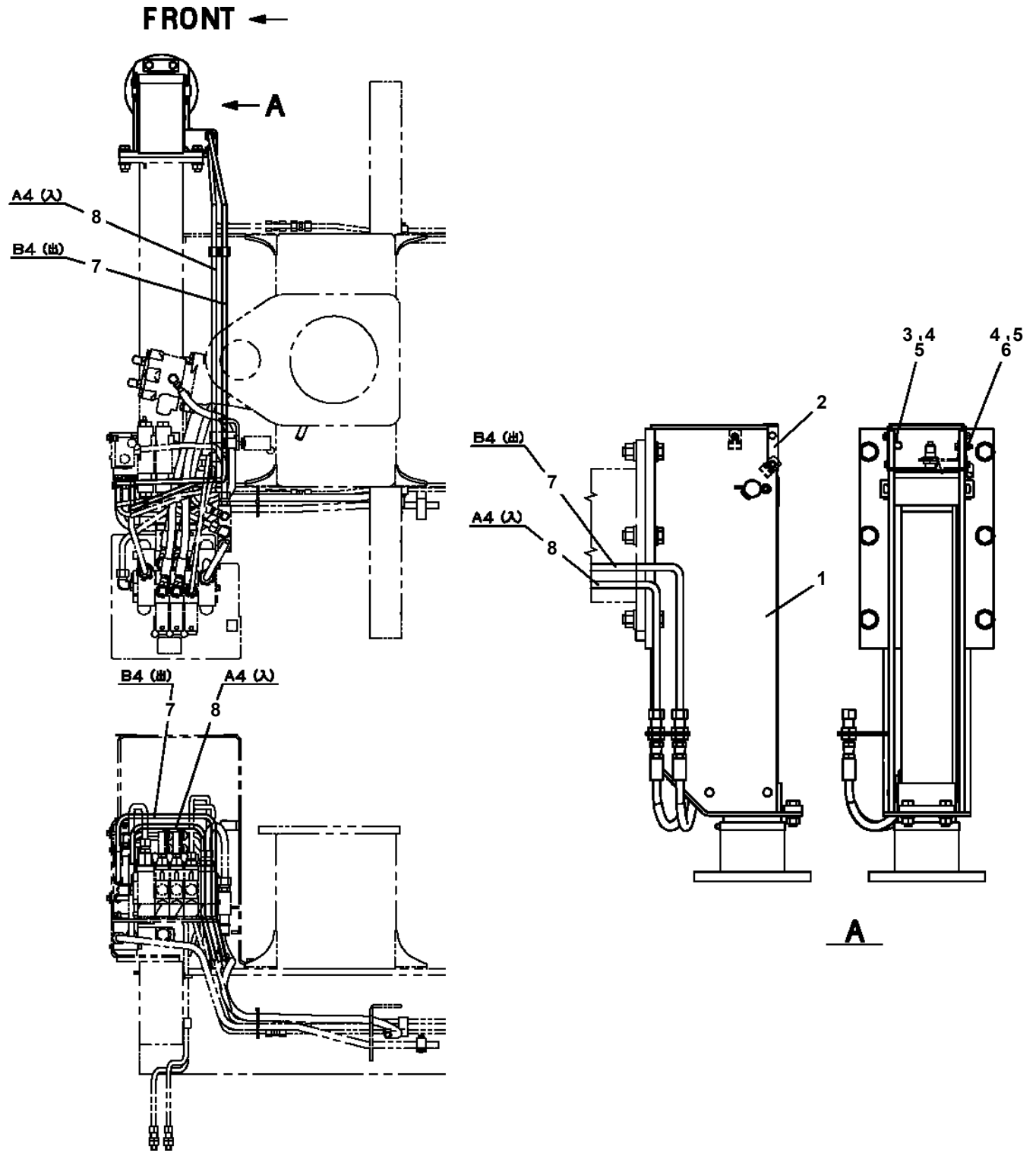
A

AT-100-5 42063532338 UPPER,LOWER,HINO TKG-XZU675M-TQMQC3
PL5270048-00 LOCK ASSY (KEY NO.6)



A

AT-100-5 42063532338 UPPER,LOWER,HINO TKG-XZU675M-TQMQC3
PM5150644-00 MODIFICATION ASSY (RIGHT/FRONT OUTRIGGER EXCHANGE)



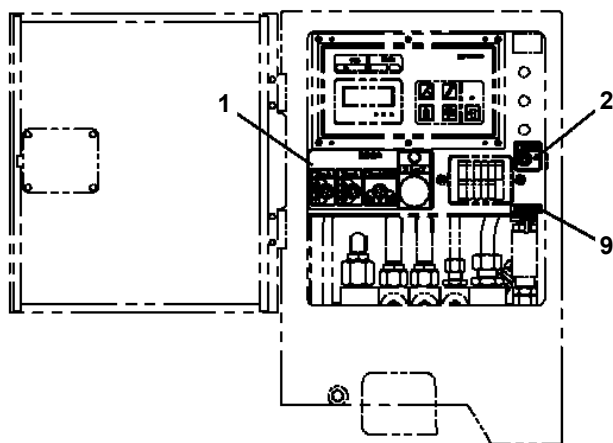
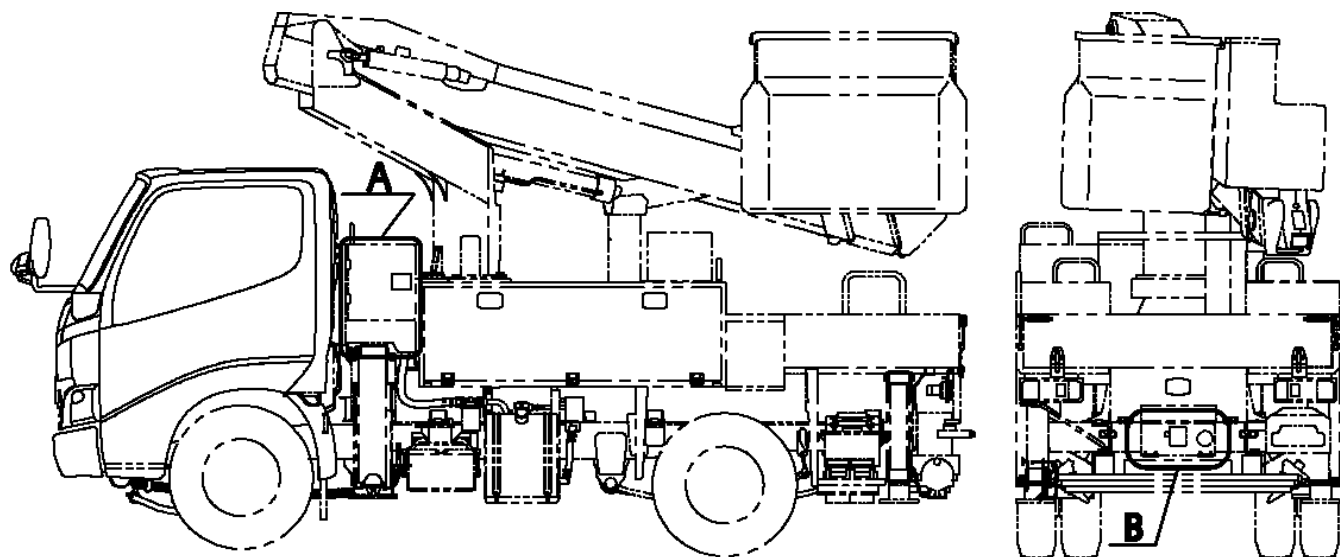
AT-100-5 42063532338 UPPER,LOWER,HINO TKG-XZU675M-TQMQC3

Pos No.	Parts No	Parts Name	Qty	Unit	Technical Data	Serial No (Start)	Serial No (End)	Remarks	Page
1	42652695010	CABLE ASSY	1		L=1500				
2	82100001216	CAP	1						
3	37002703390	CABLE ASSY	1		L=270				
4	91810132530	FASTENER	6						
5	82100001802	TUBE,CORRUGATE	2	M	10				
6	90303070801	WASHER,PLAIN	1		8				
7	90302040801	WASHER,SPRING	1		8				
8	90201200800	NUT	1		M8				
9	90303070601	WASHER,PLAIN	2		6				

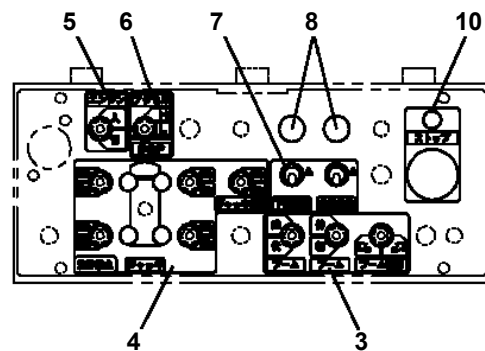
AT-100-5 42063532338 UPPER,LOWER,HINO TKG-XZU675M-TQMQC3

Pos No.	Parts No	Parts Name	Qty	Unit	Technical Data	Serial No (Start)	Serial No (End)	Remarks	Page
5	36160017550	HANDLE	1						
6	36160655020	SHAFT	1						
7	36160017560	WASHER,PLAIN	1						
9	36160025010	CORD ASSY (MAIN)	1						
10	36160025020	CLIP	1						
11	36160025030	COVER (CLIP)	1						
13	36160017590	PLATE (CONTACT)	1						
50	36160020000	REEL,CORD	1						

AT-100-5 42063532338 UPPER,LOWER,HINO TKG-XZU675M-TQMQC3
PN5010701-00 NAME PLATE ASSY (OPERATION)



A
扉を開いた状態

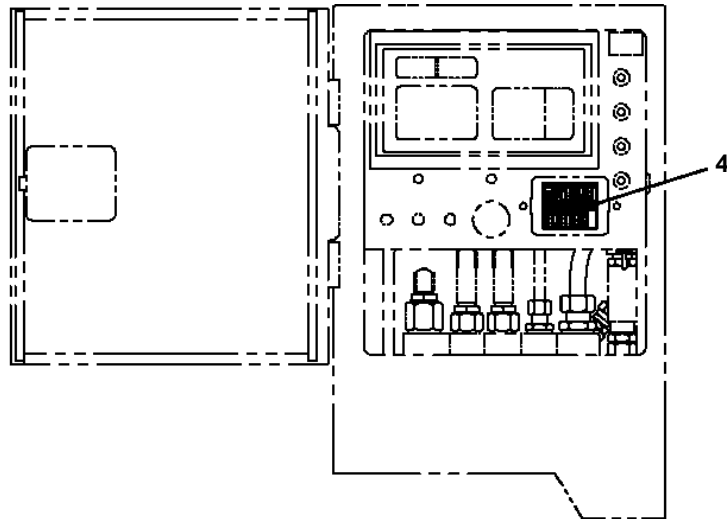


B
扉を開いた状態

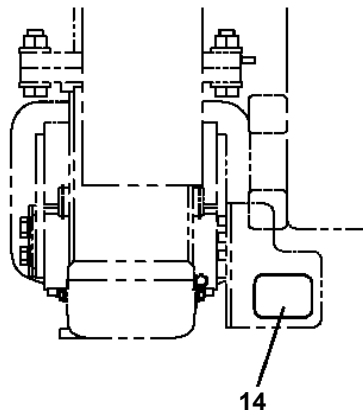
AT-100-5 42063532338 UPPER,LOWER,HINO TKG-XZU675M-TQMQC3

Pos No.	Parts No	Parts Name	Qty	Unit	Technical Data	Serial No (Start)	Serial No (E
1	42509573010	PLATE,NAME	1				
2	42509573020	PLATE,NAME	1				
3	42509573030	PLATE,NAME (OUTRIGGER OPERATION)	1				

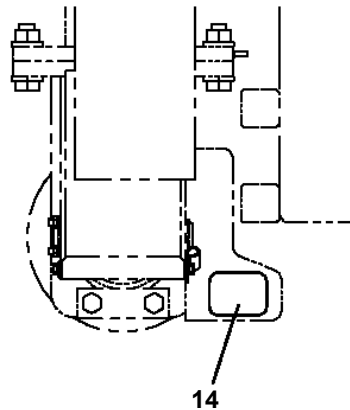
AT-100-5 42063532338 UPPER,LOWER,HINO TKG-XZU675M-TQMQC3
 PN5011673-00 NAME PLATE ASSY (TADANO,TANK,NON-SLIP,FUSE)



D
 (扉を開いた状態)



(ガイド式ジャッキの場合)

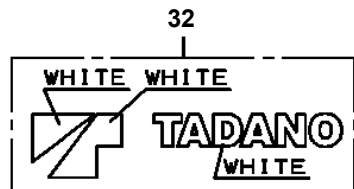
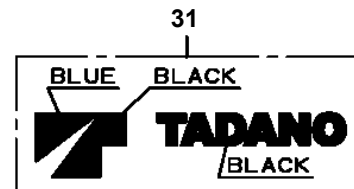


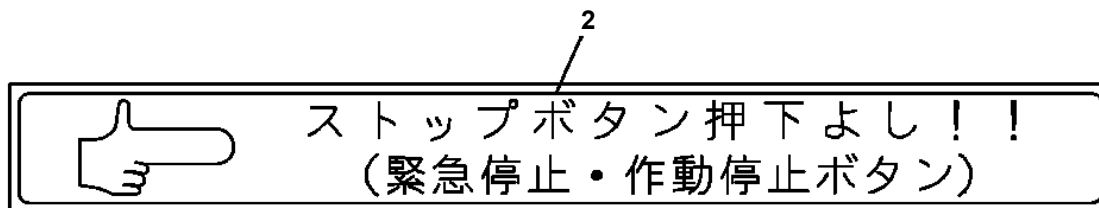
(垂直張出式ジャッキの場合)

E

4

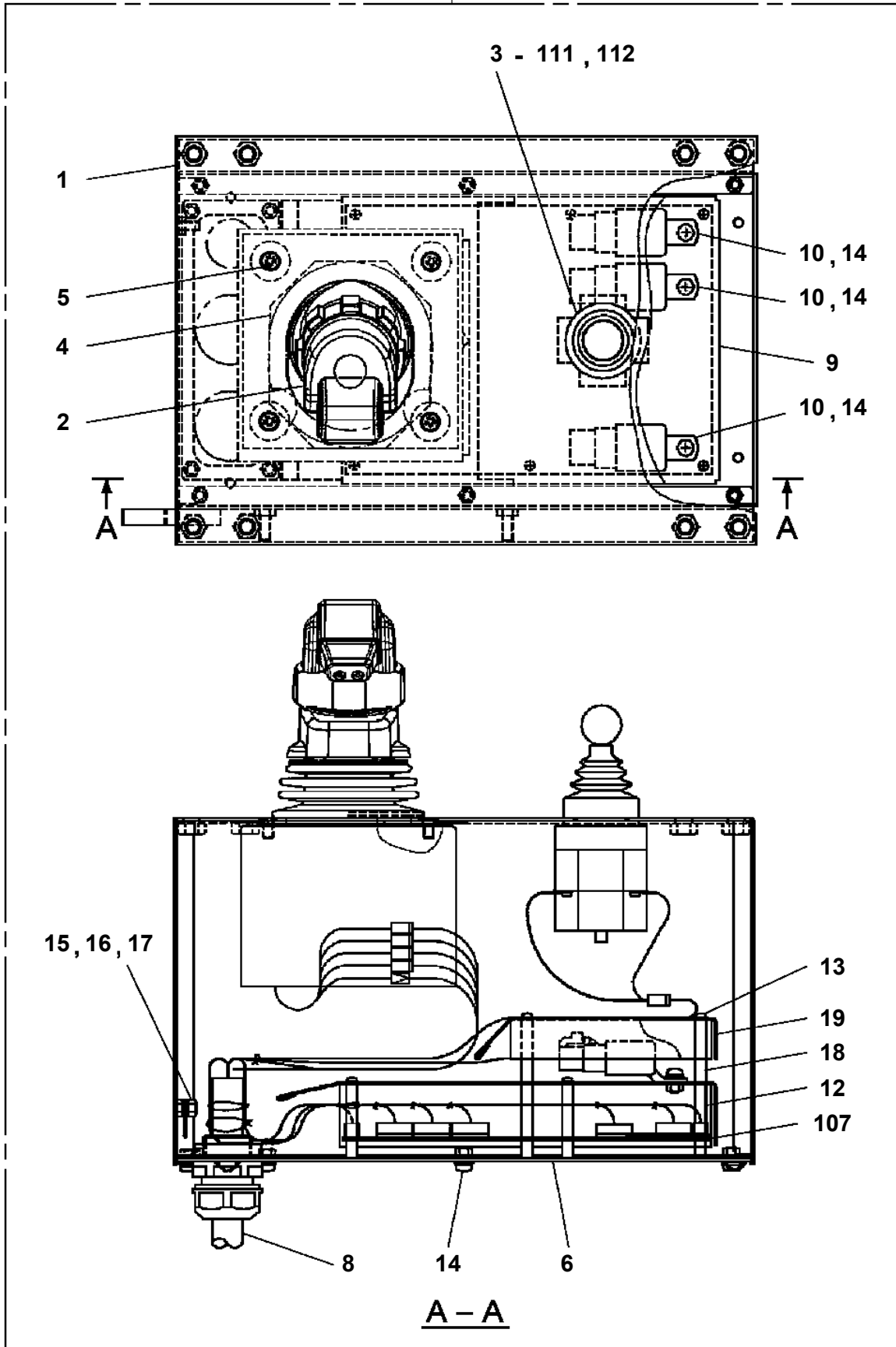
10A	10A	10A	10A	10A	10A
パ ネ ル	ス ト ッ ト	ス ト ッ ト	下 部 ス ト ッ ト	フ ィ ー ズ	リ フ ト
247	247	247	247	247	247
5A	10A	10A	20A	20A	
フ ィ ー ズ	ス ト ッ ト	フ ィ ー ズ	ス ト ッ ト	ス ト ッ ト	ス ト ッ ト



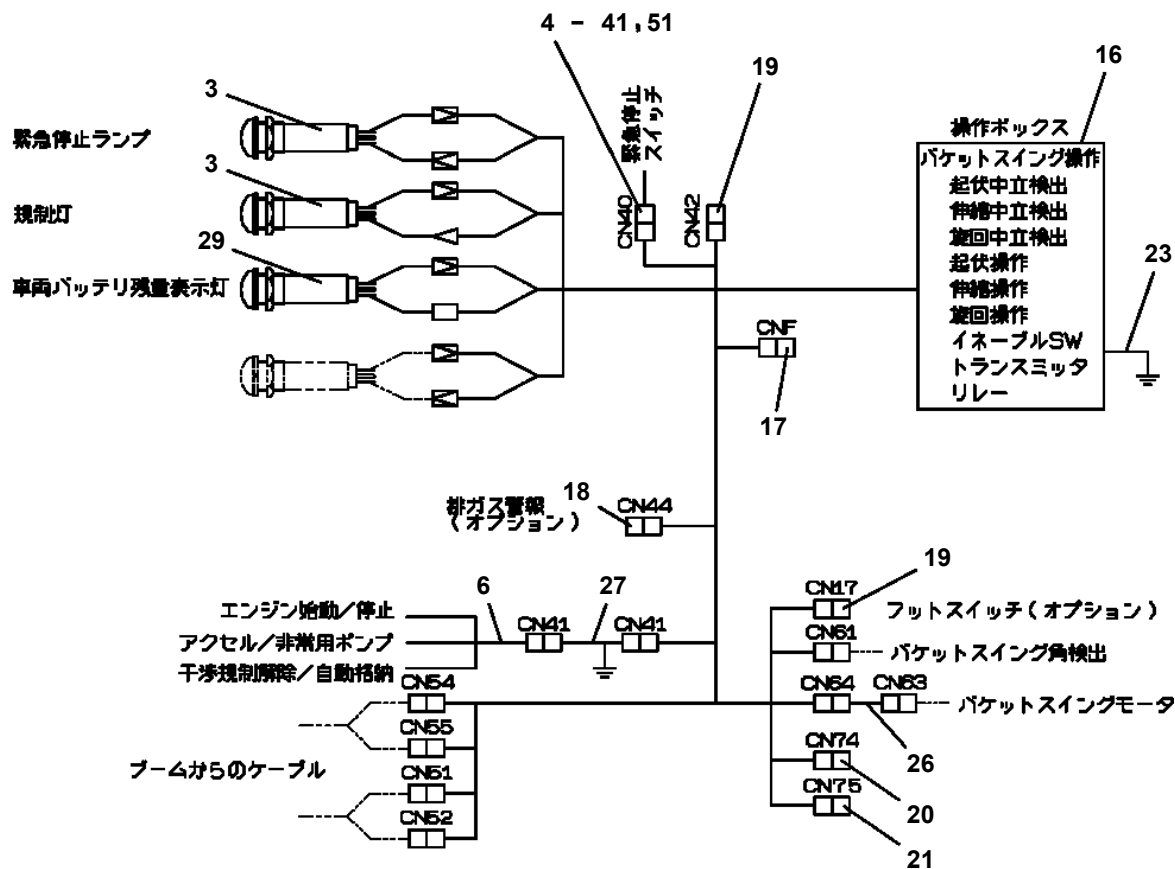


AT-100-5 42063532338 UPPER,LOWER,HINO TKG-XZU675M-TQMQC3
PO5010029-00 OPE.ASSY

200

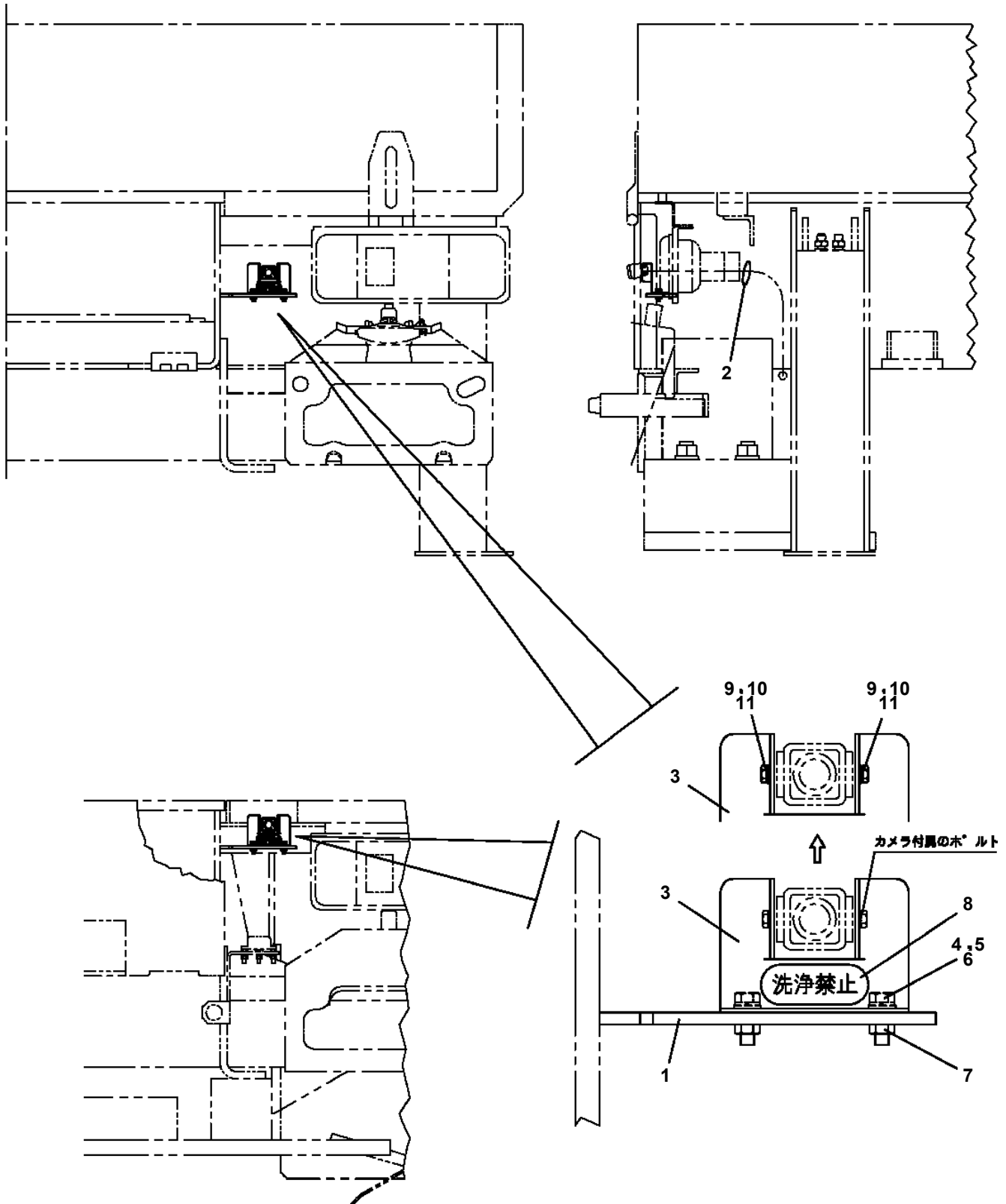


AT-100-5 42063532338 UPPER,LOWER,HINO TKG-XZU675M-TQMQC3
 PO5050042-01 OPE.ASSY,BUCKET



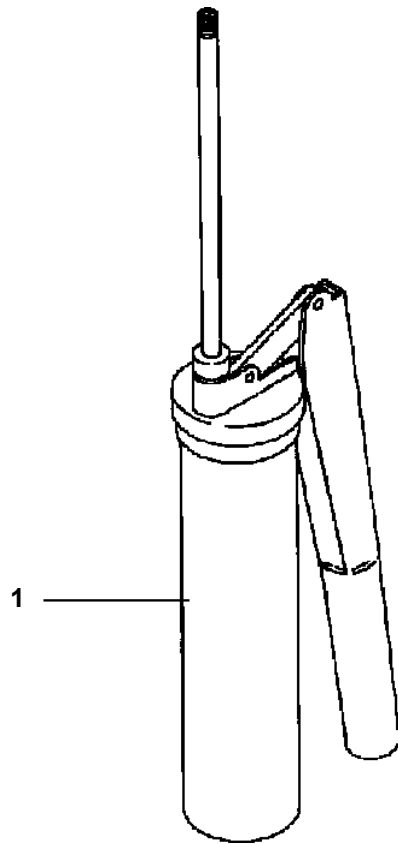
配線接続詳細

AT-100-5 42063532338 UPPER,LOWER,HINO TKG-XZU675M-TQMQC3
 PP5100164-01 PARTS ASSY,ELECTRICITY (CAMERA INSTALLATION)

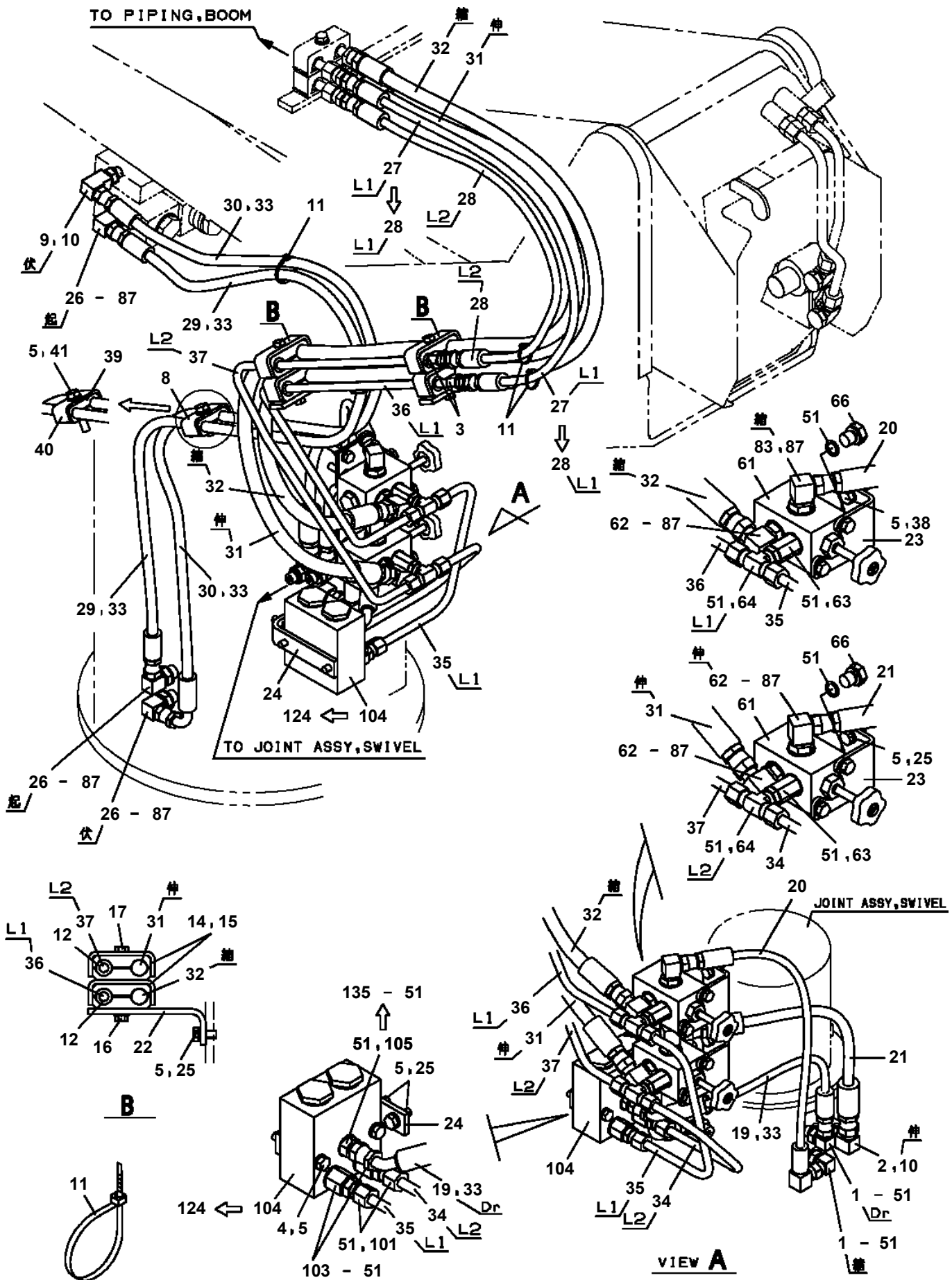


AT-100TE-5型密内仕様の場合

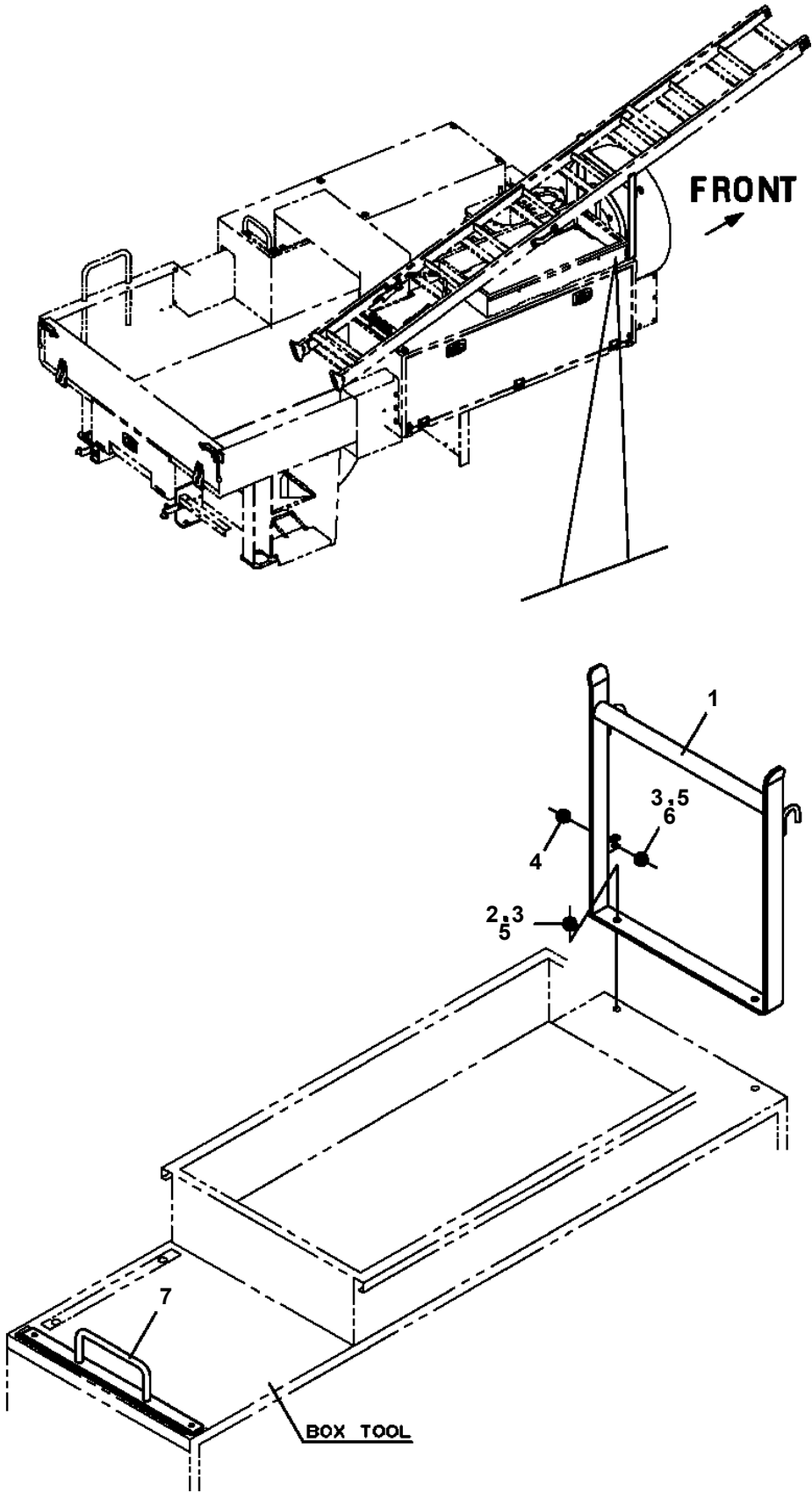
AT-100-5 42063532338 UPPER,LOWER,HINO TKG-XZU675M-TQMQC3
PP5450004-00 PUMP, GREASE (400CC)



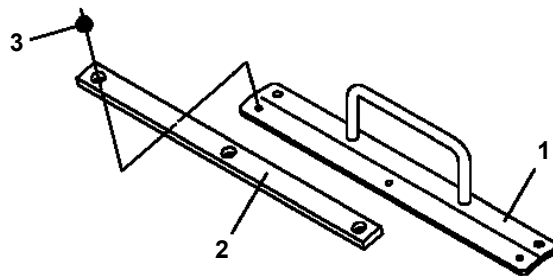
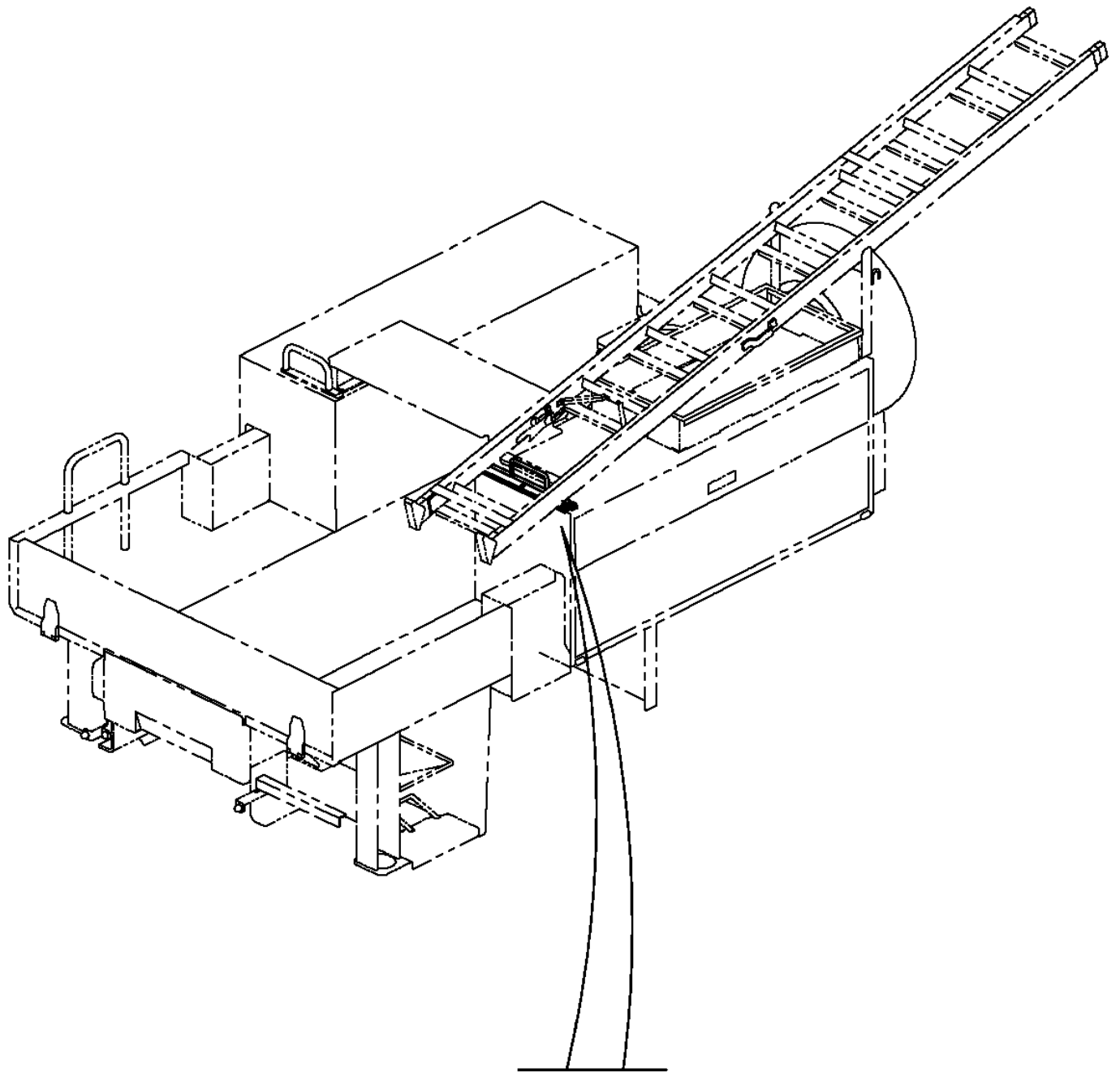
AT-100-5 42063532338 UPPER,LOWER,HINO TKG-XZU675M-TQMQC3
 PP6330005-03 PIPING ASSY,SWING FRAME



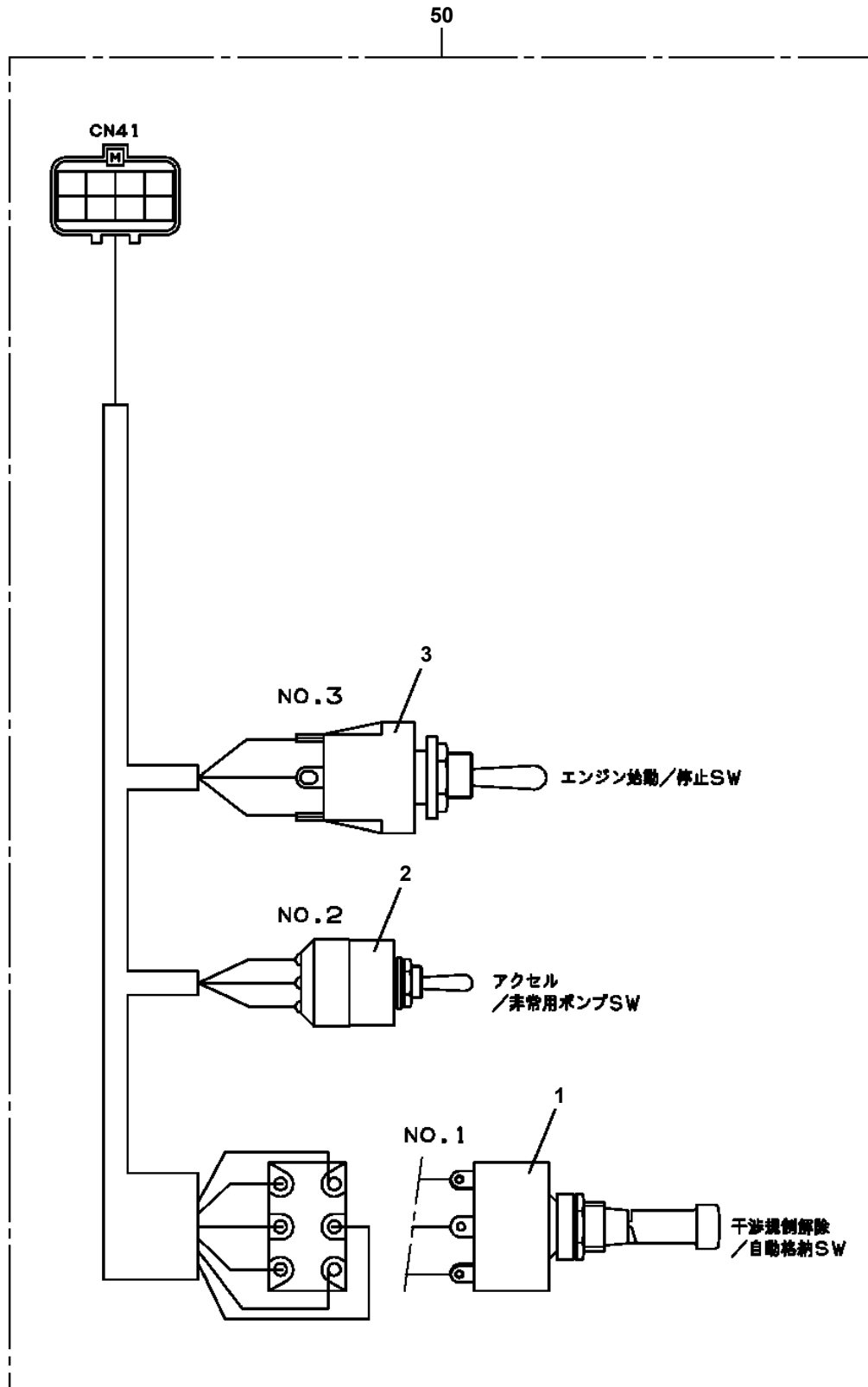
AT-100-5 42063532338 UPPER,LOWER,HINO TKG-XZU675M-TQMQC3
PS5420230-00 SUPPORT ASSY (1-DECK TOOL BOX: FIXED LADDER REST)



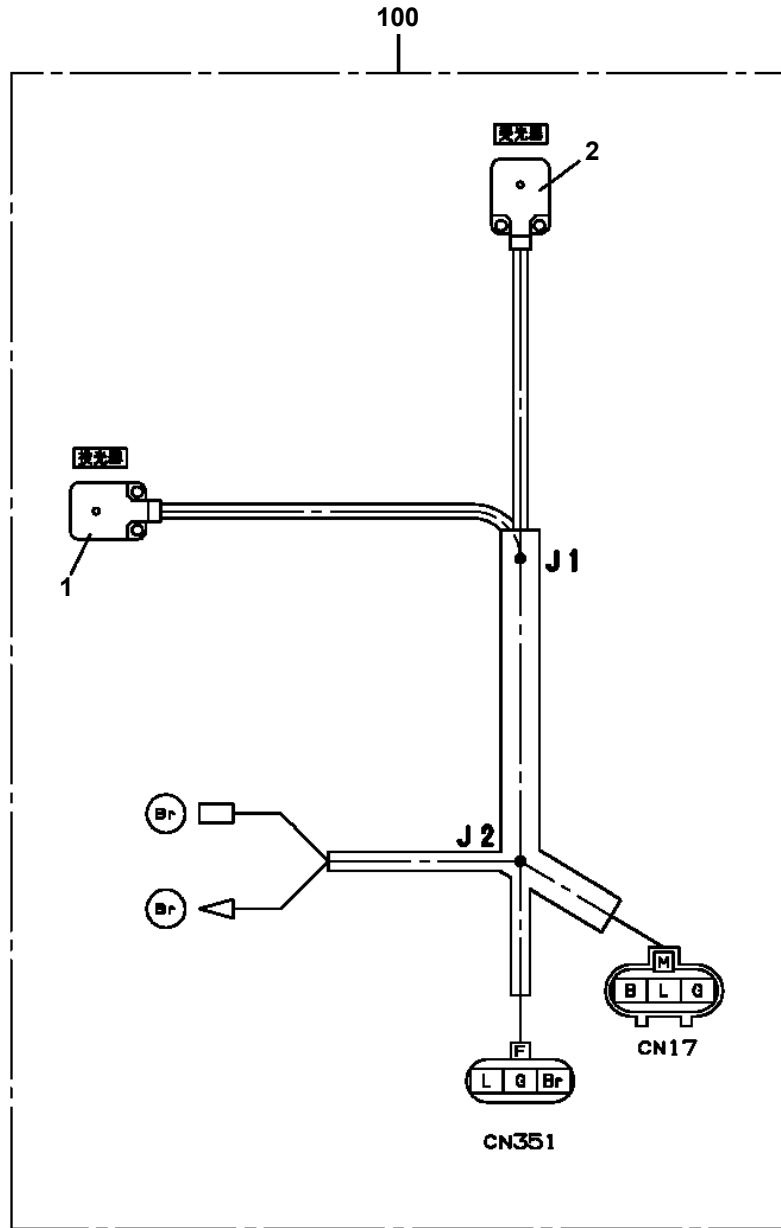
AT-100-5 42063532338 UPPER,LOWER,HINO TKG-XZU675M-TQMQC3
PS5420481-00 SUPPORT ASSY



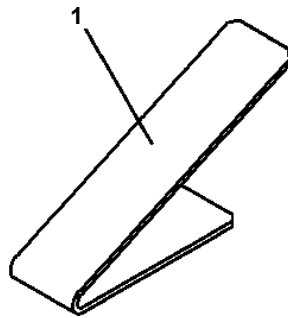
AT-100-5 42063532338 UPPER,LOWER,HINO TKG-XZU675M-TQMQC3
PS5530132-00 SWITCH ASSY (WITH HARNESS,3 SW)



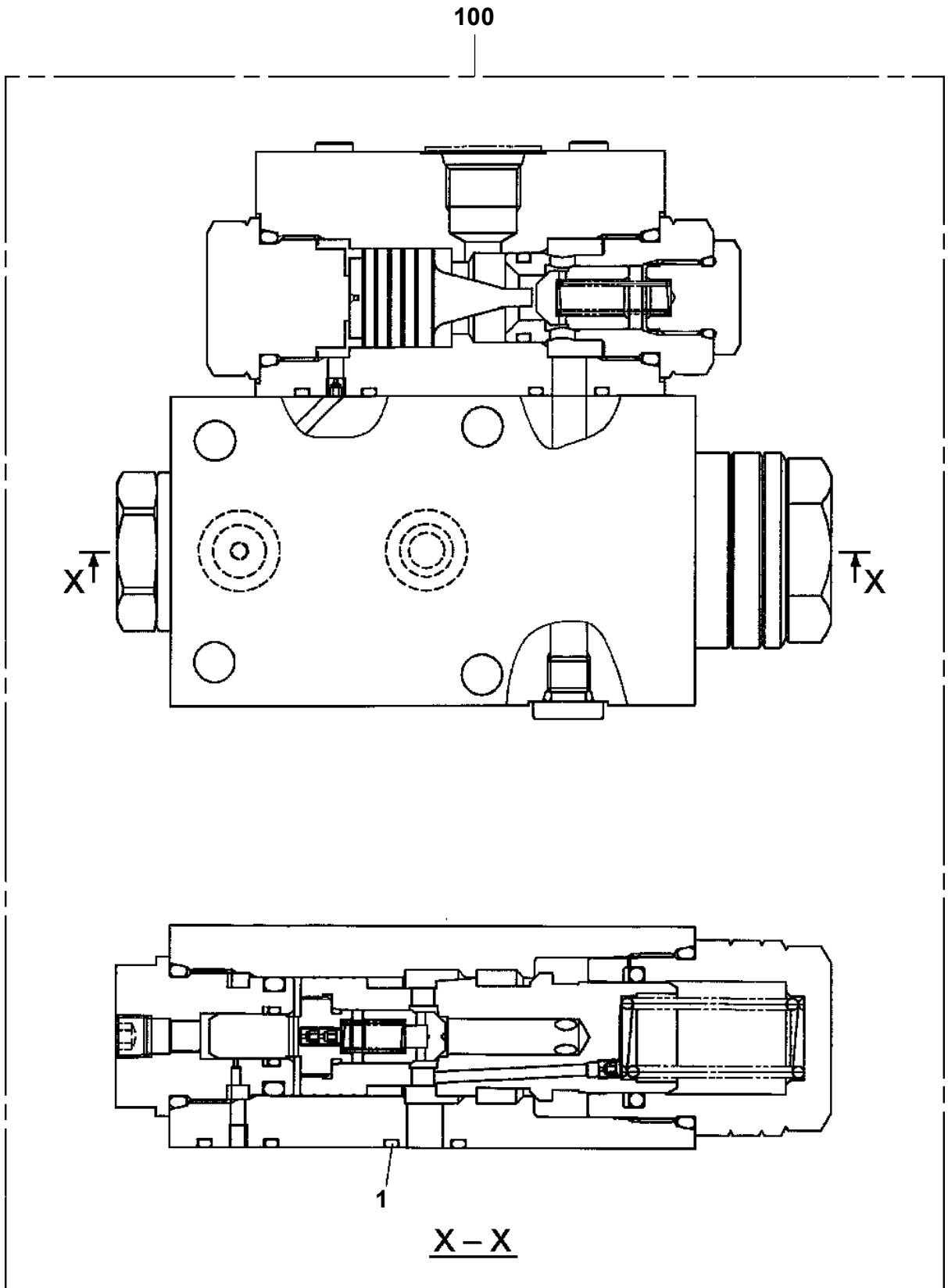
AT-100-5 42063532338 UPPER,LOWER,HINO TKG-XZU675M-TQMQC3
PS5530392-00 SWITCH ASSY



**AT-100-5 42063532338 UPPER,LOWER,HINO TKG-XZU675M-TQMQC3
PS5550005-00 SUPPORT (7 DEGREES ANGLE METER MOUNTING)**



AT-100-5 42063532338 UPPER,LOWER,HINO TKG-XZU675M-TQMQC3
PV5070007-00 VALVE ASSY,COUNTERBALANCE

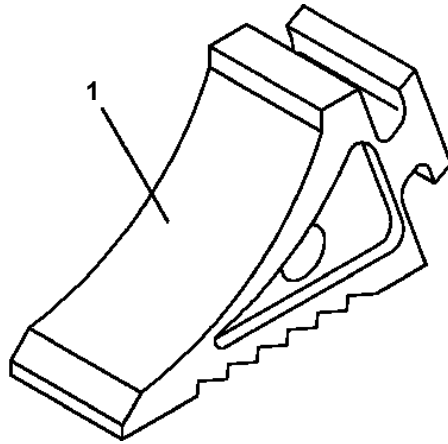


**AT-100-5 42063532338 UPPER,LOWER,HINO TKG-XZU675M-TQMQC3
PW1000118-00 ACCESSORIES & TOOLS**

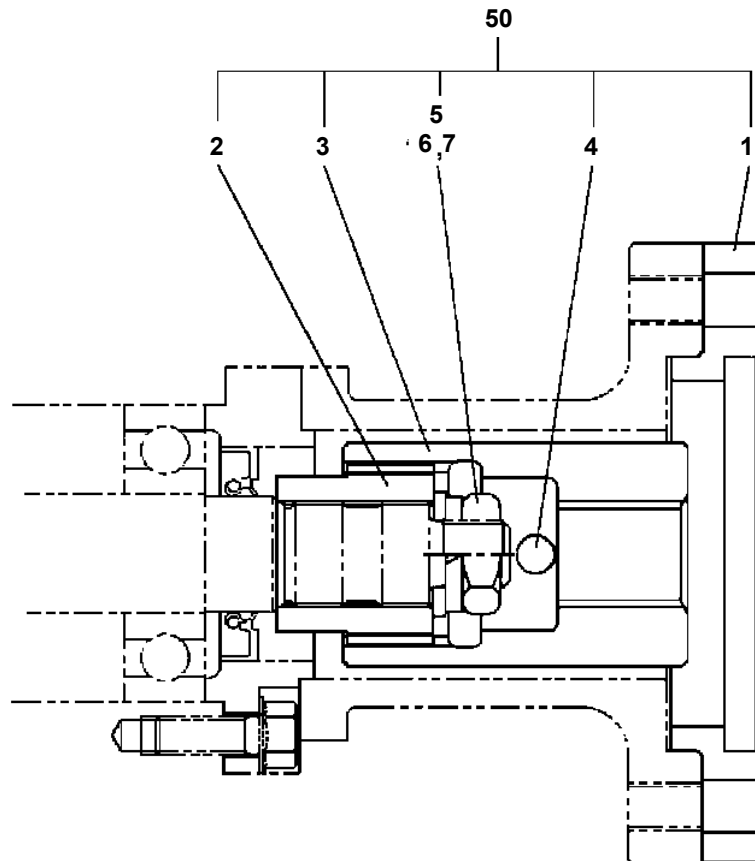
フソク ア ヒン
ACCESSORIES & TOOLS

【組立名称一覧】より選択してください。
SEE THE CORRESPONDING "ASSEMBLY NAME" LIST.

AT-100-5 42063532338 UPPER,LOWER,HINO TKG-XZU675M-TQMQC3
PW1050018-01 WEDGE (STOPPER FOR TIRE/JUSTIN)

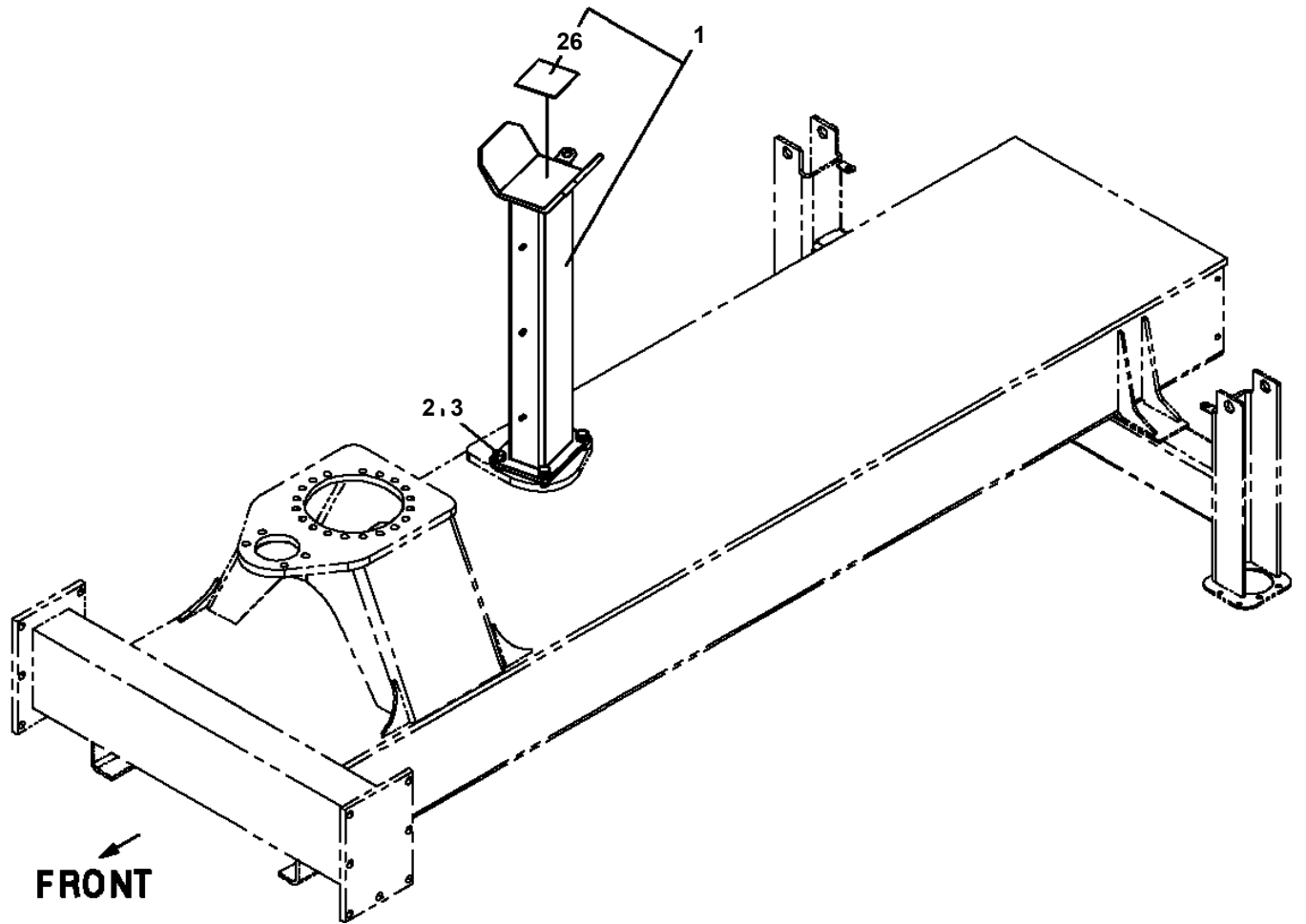


**AT-100-5 42063532338 UPPER,LOWER,HINO TKG-XZU675M-TQMQC3
PX1830012-01 COUPLING**



PTO

**AT-100-5 42063532338 UPPER,LOWER,HINO TKG-XZU675M-TQMQC3
PX5110029-00 MOUNT ASSY,BOOM SUPPORT**



AT-100-5 42063532338 UPPER,LOWER,HINO TKG-XZU675M-TQMQC3

Pos No.	Parts No	Parts Name	Qty	Unit	Technical Data	Serial No (Start)	Serial No (End)	Remarks	Pages
1	90101210025	BOLT	4		M10X25				
2	90302041001	WASHER,SPRING	4		10				
3	37000549940	PLATE	8		T=3.2				
4	90201201000	NUT	4		M10				
5	42973750200	GUARD,MUD	2						
6	42973750100	PLATE	2						

AT-100-5 42063532338 UPPER,LOWER,HINO TKG-XZU675M-TQMQC3

Pos No.	Parts No	Parts Name	Qty	Unit	Technical Data	Serial No (Start)	Serial No (End)	Remarks	Pages
1	42393891060	PLATE (NON-SLIP)	1						
2	42510430100	SUPPORT	1						
3	90101210018	BOLT	2		M10X18				
4	90302041001	WASHER,SPRING	2		10				

AT-100-5 42063532338 UPPER,LOWER,HINO TKG-XZU675M-TQMQC3

Pos No.	Parts No	Parts Name	Qty	Unit	Technical Data	Serial No (Start)	Serial No (End)	Remarks	Pages
1	42839113002	BOX,TOOL	1						000029
2	42839111001	BOX,TOOL	1						000026
3	90101210025	BOLT	8		M10X25				
4	90302041001	WASHER,SPRING	8		10				
5	37000505950	PLATE	8		T=3.2				
6	42839110200	SUPPORT	1						
7	90101208014	BOLT	8		M8X14				
8	42839110100	SUPPORT	2						
11	90302040801	WASHER,SPRING	8		8				
13	37000547660	PLATE	4		T=2.3				
31	42398701010	PLATE,CAUTION	2						

**AT-100-5 42063532338 UPPER,LOWER,HINO TKG-XZU675M-TQMQC3
PY1001858-02 OPTION UNIT,1 (UPPER)**

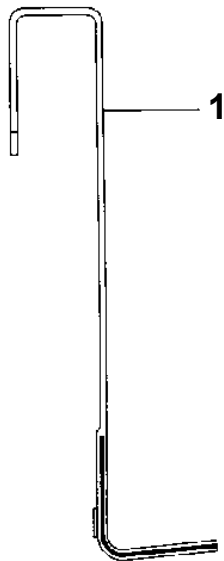
49

スイッチアッシー (安全ロープインターロック/ダブルリディング) SWITCH ASSY (SAFETY ROPE INTERLOCK/FOR DOUBLE RIDING)		
部品 KEY NO.	部品 PART NAME	注 REMARK
1	ハイスアッシー ELEC.ASSY	ハイス用アッシー
2	メイアッシー MODIFICATION ASSY	メイアッシー用アッシー
3	ハイスアッシー ELEC.ASSY	フリーアッシー

適用製造番号によっては取り付けがないものもあります。

MACHINES OF SOME SERIAL NO. ARE NOT EQUIPPED WITH THESE PARTS.

**AT-100-5 42063532338 UPPER,LOWER,HINO TKG-XZU675M-TQMQC3
PY1760001-00 STEP,BUCKET**



AT-100-5 42063532338 UPPER,LOWER,HINO TKG-XZU675M-TQMQC3
 PY2000288-00 OPTION UNIT,2 (UPPER)

符号	日本語名称	英語名称	備考
27	ロックASSY	LOCK ASSY	AT-100TTE宅内用：スライド 工具箱×2、 脚立入れ×1、梯子入れ×1 鍵交換No.1
28	ロックASSY	LOCK ASSY	AT-100TTE宅内用：スライド 工具箱×2、 脚立入れ×1、梯子入れ×1 鍵交換No.2
29	ロックASSY	LOCK ASSY	AT-100TTE宅内用：スライド 工具箱×2、 脚立入れ×1、梯子入れ×1 鍵交換No.3
30	ロックASSY	LOCK ASSY	AT-100TTE宅内用：スライド 工具箱×2、 脚立入れ×1、梯子入れ×1 鍵交換No.4
31	ロックASSY	LOCK ASSY	AT-100TTE宅内用：スライド 工具箱×2、 脚立入れ×1、梯子入れ×1 鍵交換No.5
32	ロックASSY	LOCK ASSY	AT-100TTE宅内用：スライド 工具箱×2、 脚立入れ×1、梯子入れ×1 鍵交換No.6
33	ロックASSY	LOCK ASSY	AT-100TTE宅内用：スライド 工具箱×2、 脚立入れ×1、梯子入れ×1 鍵交換No.7
34	ロックASSY	LOCK ASSY	AT-100TTE宅内用：スライド 工具箱×2、 脚立入れ×1、梯子入れ×1 鍵交換No.8
35	ロックASSY	LOCK ASSY	AT-100TTE宅内用：スライド 工具箱×2、 脚立入れ×1、梯子入れ×1 鍵交換No.9
36	ロックASSY	LOCK ASSY	AT-100TTE宅内用：スライド 工具箱×2、 脚立入れ×1、梯子入れ×1 鍵交換No.10
37	ハンドル	HANDLE	1段・2段工具箱、梯子入れ用T字型ハンドル 鍵No.01
38	ハンドル	HANDLE	1段・2段工具箱、梯子入れ用T字型ハンドル 鍵No.02
39	ハンドル	HANDLE	1段・2段工具箱、梯子入れ用T字型ハンドル 鍵No.03
40	ハンドル	HANDLE	1段・2段工具箱、梯子入れ用T字型ハンドル 鍵No.04
41	ハンドル	HANDLE	1段・2段工具箱、梯子入れ用T字型ハンドル 鍵No.05
42	ハンドル	HANDLE	1段・2段工具箱、梯子入れ用T字型ハンドル 鍵No.06
43	ハンドル	HANDLE	1段・2段工具箱、梯子入れ用T字型ハンドル 鍵No.07
44	ハンドル	HANDLE	1段・2段工具箱、梯子入れ用T字型ハンドル 鍵No.08
45	ハンドル	HANDLE	1段・2段工具箱、梯子入れ用T字型ハンドル 鍵No.09
46	ハンドル	HANDLE	1段・2段工具箱、梯子入れ用T字型ハンドル 鍵No.10

適用製造番号によっては取り付けがないものもあります。

MACHINES OF SOME SERIAL NO. ARE NOT EQUIPPED WITH THESE PARTS.

CLICK HERE TO **DOWNLOAD** THE COMPLETE MANUAL

- Thank you very much for reading the preview of the manual.
- You can download the complete manual from: www.heydownloads.com by clicking the link below



- Please note: If there is no response to CLICKING the link, please download this PDF first and then click on it.

CLICK HERE TO **DOWNLOAD** THE COMPLETE MANUAL