

AT-100-5 42063531631 UPPER,LOWER,HINO TKG-XZU600X-TYMMC6

PB0000275-02 UPPER STRUCTURE SYSTEM

PB0000500-02 LOWER STRUCTURE SYSTEM

ASSEMBLY

CLICK HERE TO **DOWNLOAD** THE COMPLETE MANUAL

- Thank you very much for reading the preview of the manual.
- You can download the complete manual from: www.heydownloads.com by clicking the link below



- Please note: If there is no response to CLICKING the link, please download this PDF first and then click on it.

CLICK HERE TO **DOWNLOAD** THE COMPLETE MANUAL

AT-100-5 42063531631 UPPER,LOWER,HINO TKG-XZU600X-TYMMC6

PX5670024-00 MOUNT ASSY,STEP (FOR BOX TOOL OF LEFT SIDE)

PX5670035-00 MOUNT ASSY,STEP (RIGHT-FRONT JACK)

PX5730003-00 MOUNT ASSY,SWIVEL JOINT

PX5740029-02 MOUNT ASSY,TAIL LAMP

PX5760013-00 MOUNT ASSY,TANK SUPPORT

PX5770019-00 MOUNT ASSY,TIRE

PX5780142-00 MOUNT ASSY,TOOL BOX (FOR LEFT SIDE DRAWER,1&2 DECK)

PX5780150-01 MOUNT ASSY,TOOL BOX

PX5780289-00 MOUNT ASSY,TOOL BOX (LEFT:1-D,RIGHT:GATE)

PX5820038-01 MOUNT ASSY,WEIGHT

PX5850007-01 MOUNT ASSY,WOOD BLOCK (LARGE)

PY1070000-00 ROPE (SAFETY,YELLOW:TD-TYPE)

PY1070001-00 ROPE (SAFETY,1.5M,WITH HOOK)

PY1090001-00 BELT,SAFETY

PY1760001-00 STEP,BUCKET

PY1930004-00 BLOCK,RUBBER (WAZUMI)

PY1930005-00 BLOCK,RUBBER (NAKAMURA)

PY2000288-00 OPTION UNIT,2 (UPPER)

PY2120005-00 BOX,TOOL (FOR BUCKET,FRP)

PY4000009-11 UPPER OPTIONS,1

PY4000032-01 OPTION UNIT,1 (LOWER)

PY5020165-00 ACCESSORIES ASSY (WITHOUT BLOCK,RUBBER)

PY5310030-00 AUTOMATIC MOTION CONTROLLER

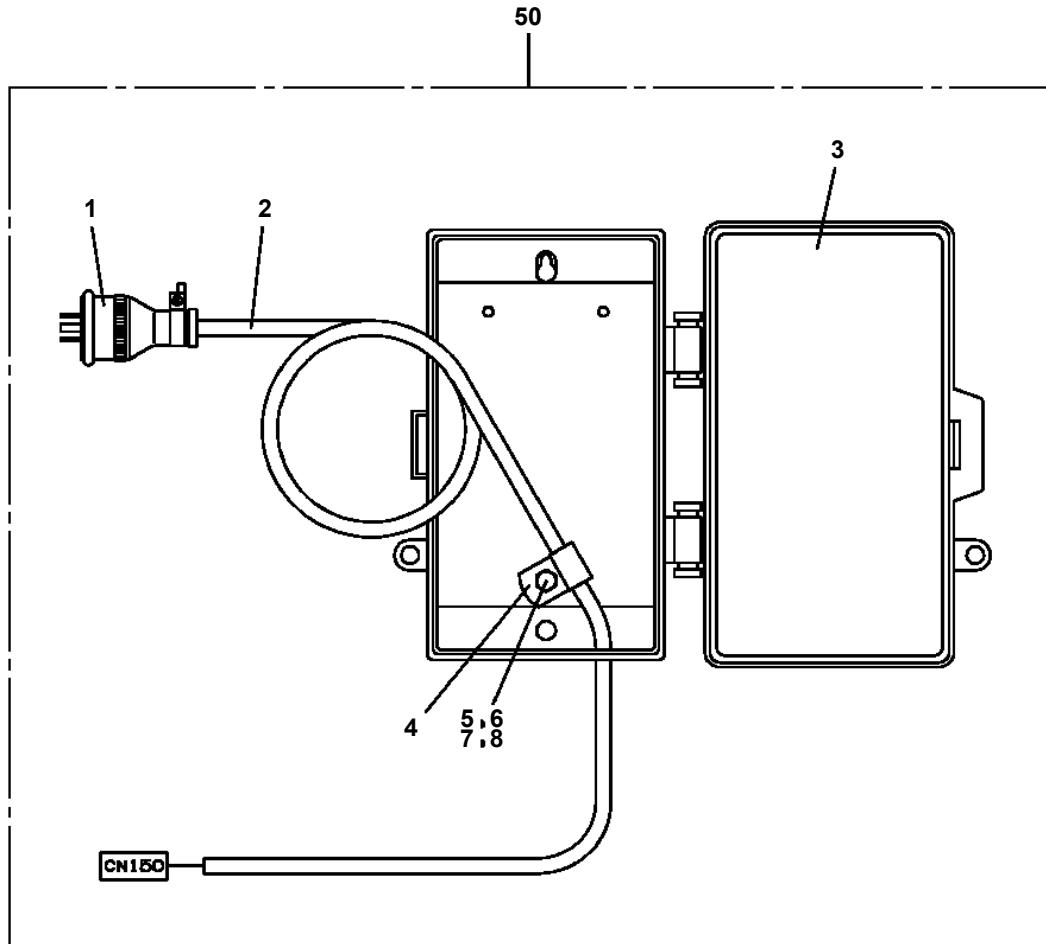
AT-100-5 42063531631 UPPER,LOWER,HINO TKG-XZU600X-TYMMC6

| Pos No. | Parts No | Parts Name | Qty | Unit | Technical Data | Serial No (Start) | Serial No (End) |
|---------|-------------|--------------------------------|-----|------|----------------|-------------------|-----------------|
| 50 | 53063551150 | BACKUP STRIP | 2 | | | | |
| 51 | 36650715040 | GASKET | 2 | | | | |
| 52 | 36650715050 | GASKET | 2 | | | | |
| 65 | 53063551010 | SEAL,OIL | 1 | | | | |
| 100 | 36652290000 | PUMP,HYDRAULIC (SGP2-44D2H9-L) | 1 | | | | |

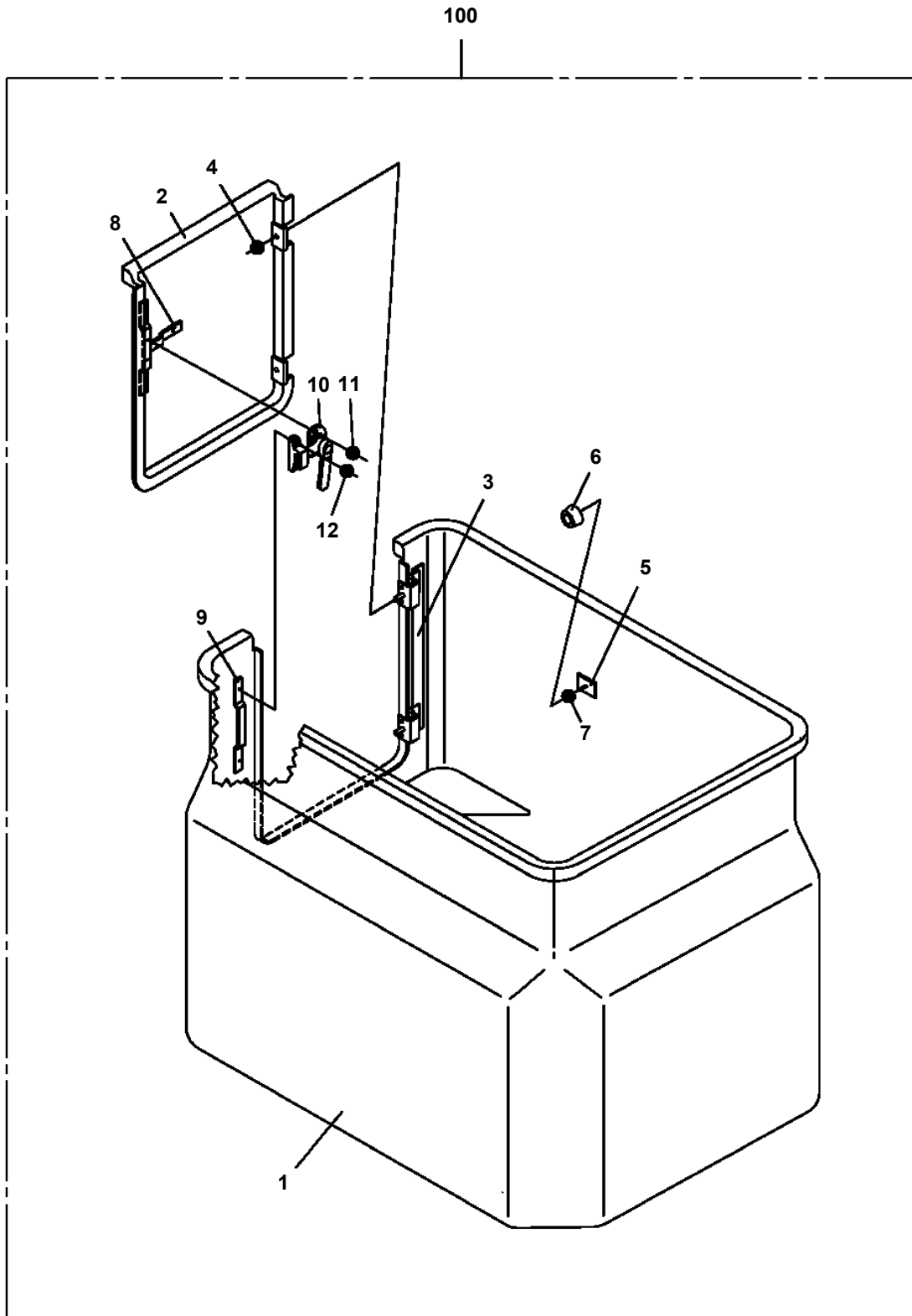
AT-100-5 42063531631 UPPER,LOWER,HINO TKG-XZU600X-TYMMC6

| Pos No. | Parts No | Parts Name | Qty | Unit | Technical Data | Serial No (Start) | Serial No (End) |
|---------|-------------|------------------------------|-----|------|----------------|-------------------|-----------------|
| 1 | 42507430100 | BATTERY CHARGER (WITH CABLE) | 1 | | | | |

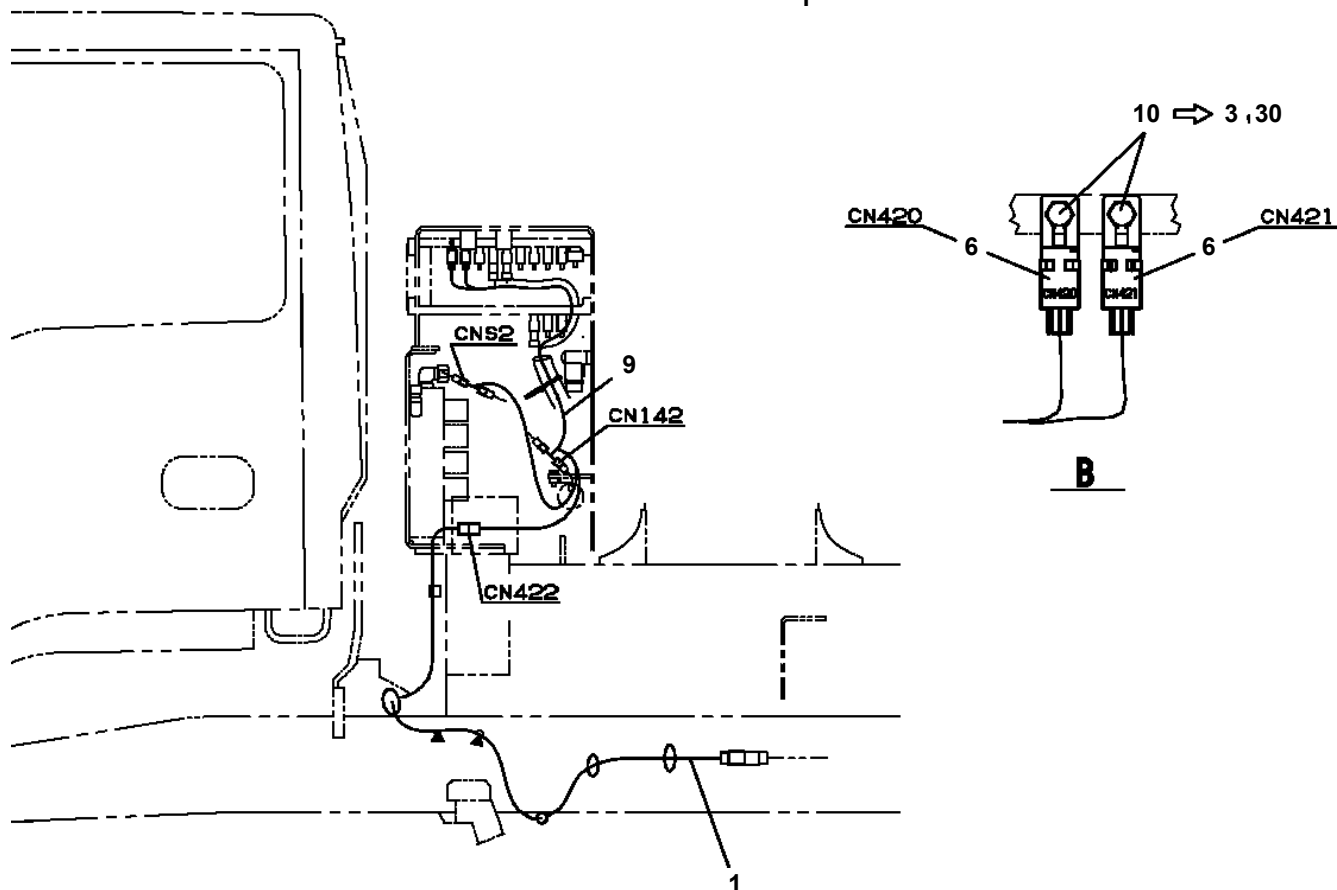
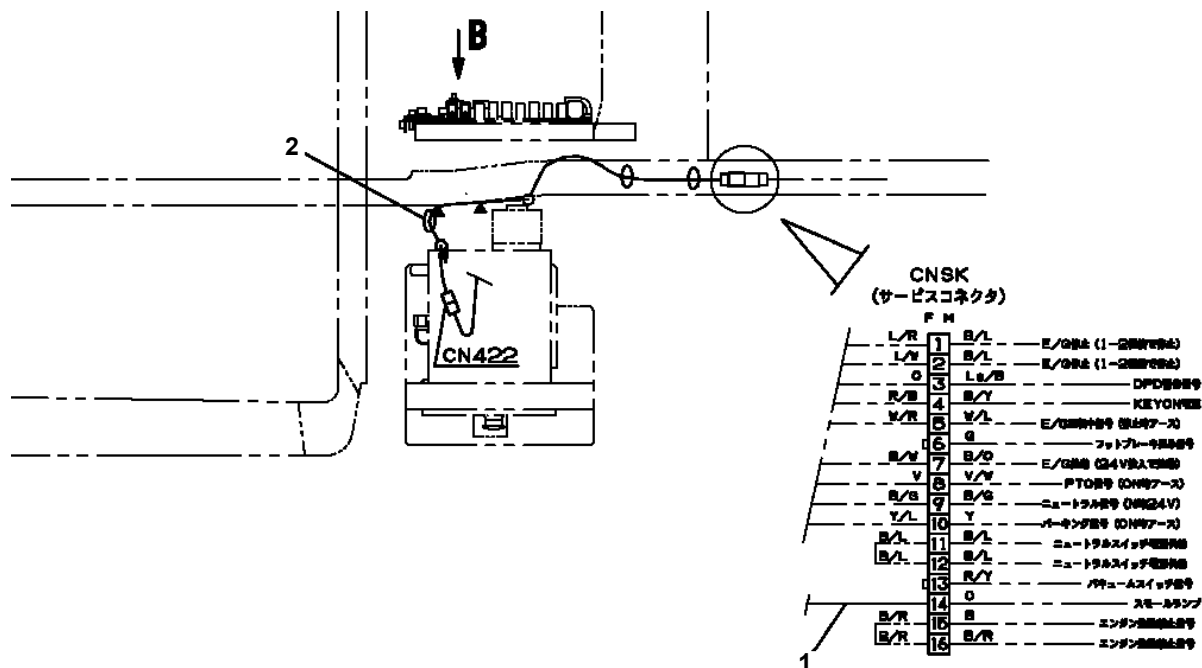
AT-100-5 42063531631 UPPER,LOWER,HINO TKG-XZU600X-TYMMC6
PB5260037-00 BOX ASSY



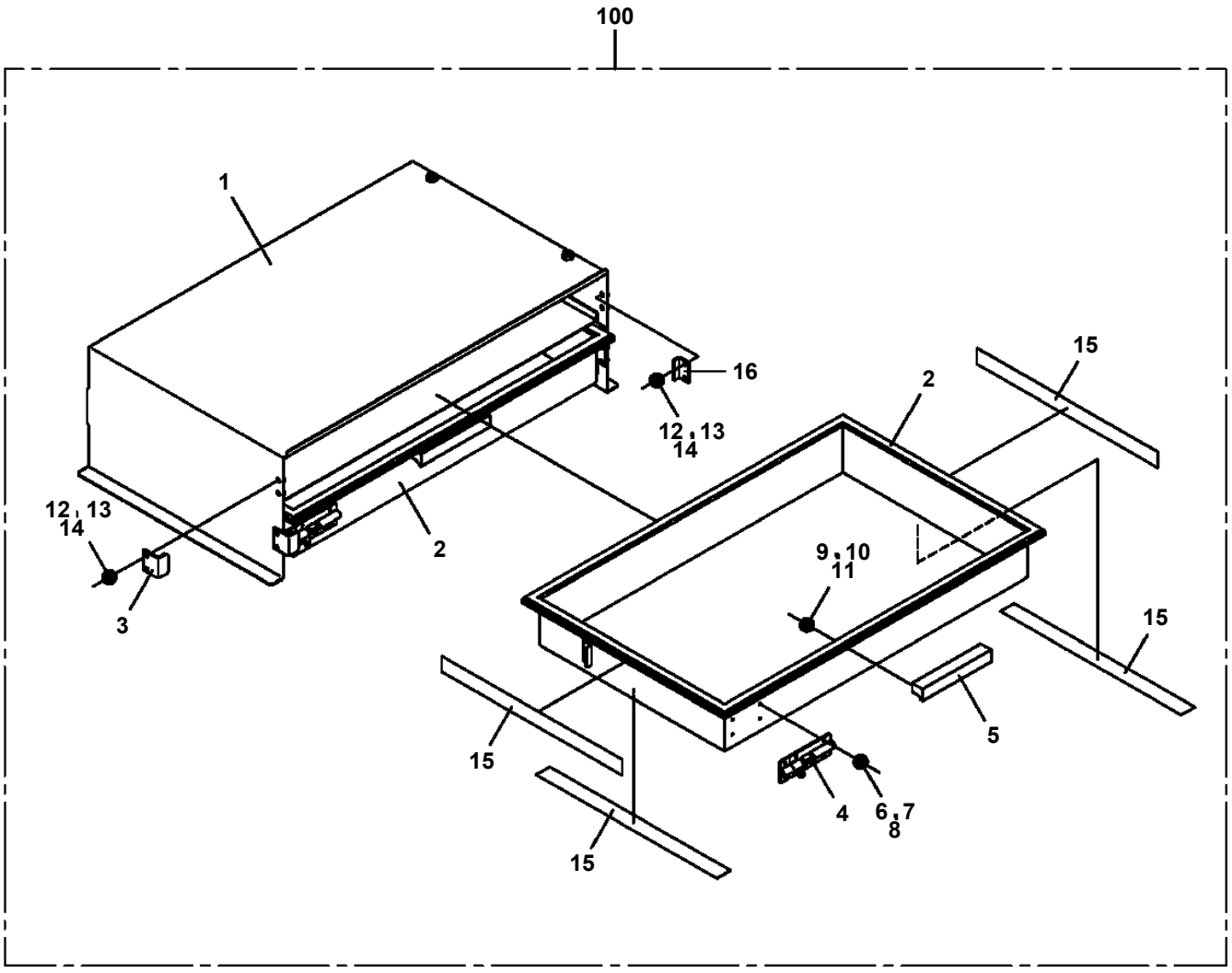
AT-100-5 42063531631 UPPER,LOWER,HINO TKG-XZU600X-TYMMC6
PB5340007-00 BUCKET (WITH DOOR,WHITE)



AT-100-5 42063531631 UPPER,LOWER,HINO TKG-XZU600X-TYMMC6
PB5390005-00 BUZZER ASSY (JACK CONTROL ALARM)



AT-100-5 42063531631 UPPER,LOWER,HINO TKG-XZU600X-TYMMC6
PB5410158-00 BOX,TOOL

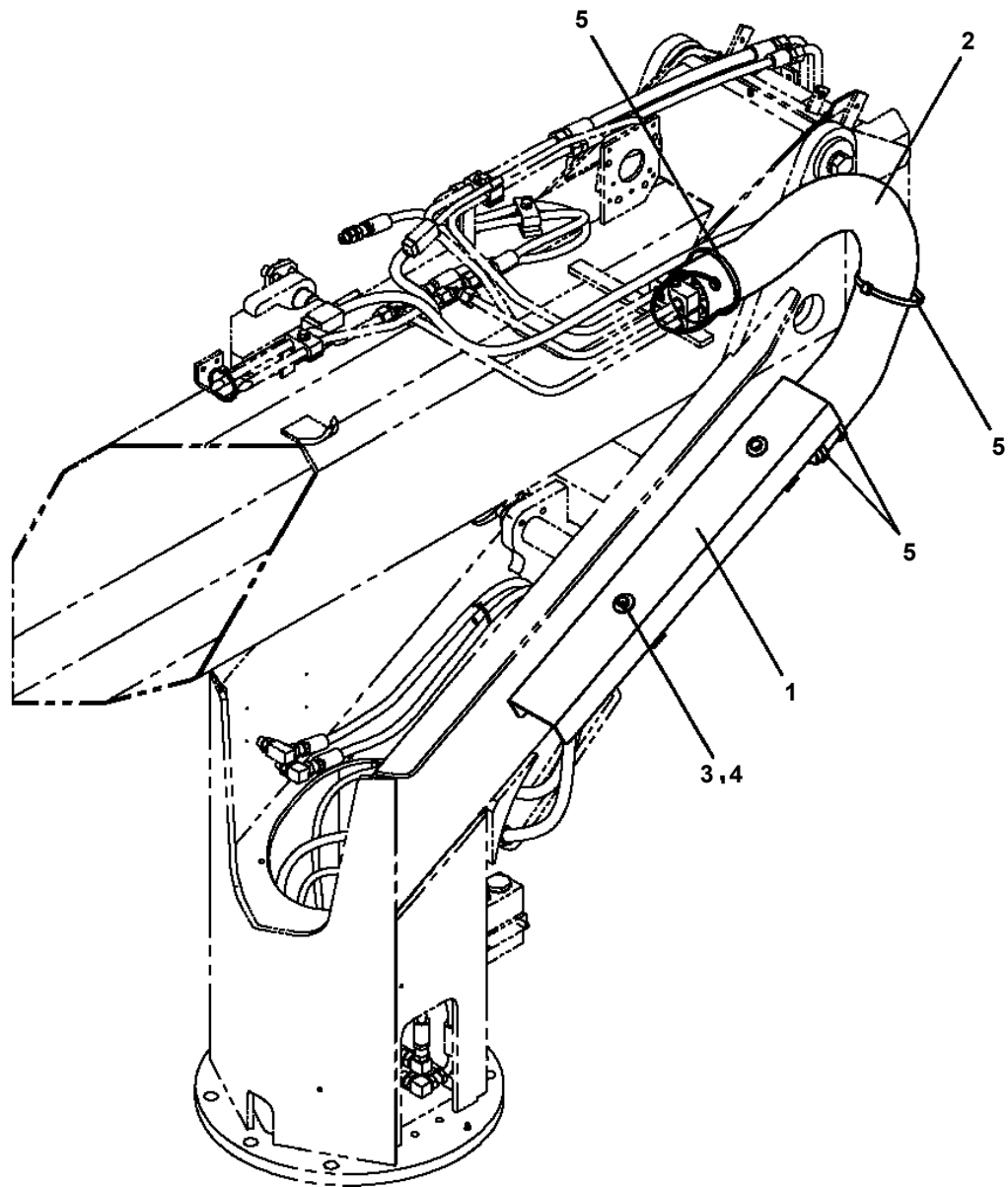


**AT-100-5 42063531631 UPPER,LOWER,HINO TKG-XZU600X-TYMMC6
PC5390008-00 CONTROL ASSY,OUTRIGGER (J/HORIZONTAL+GRADIENT WARNIN**

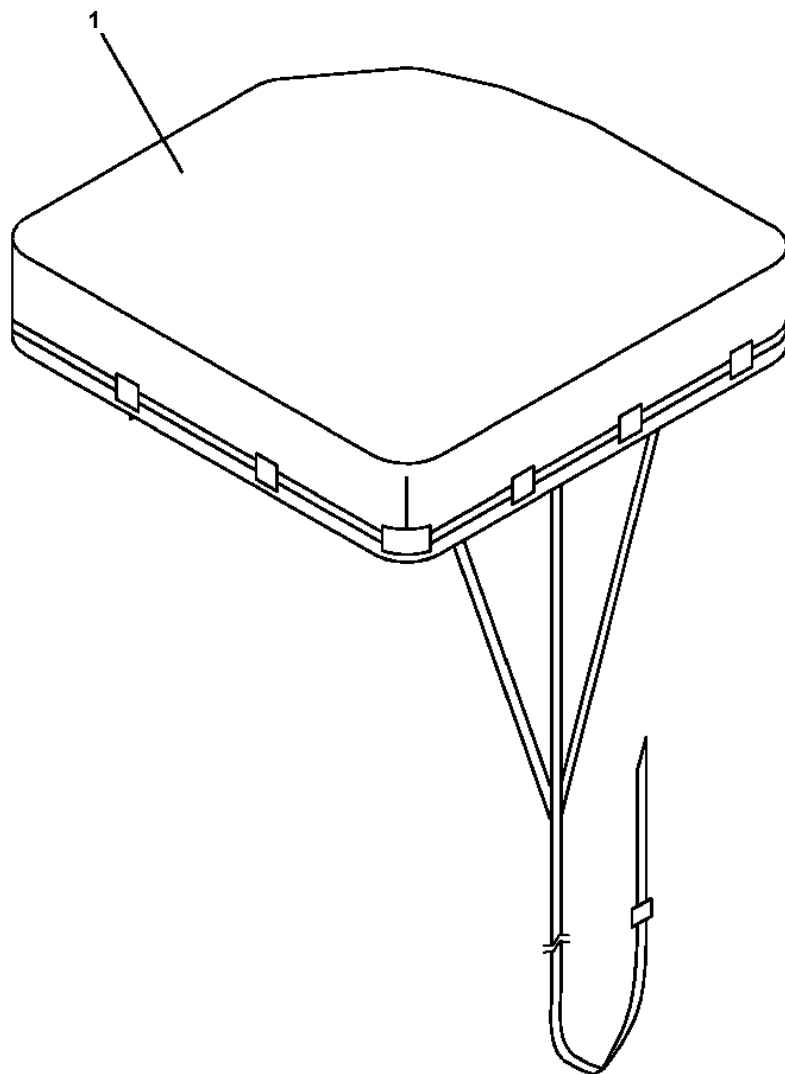
コントロールASSY,アウトリガ (ジ ャツキシ ト ウスイハイ+ケイシヤチケイホウ)
CONTROL ASSY,OUTRIGGER (JACK HORIZONTAL+GRADIENT WARNING)

| 指示番号 KEY NO. | 部品名称 PART NAME | 備考 REMARK |
|-----------------|-------------------------|---------------|
| 1 | ハイセンASSY ELEC.ASSY | 傾斜計及び傾斜地警報用配線 |
| 4 | ハイカンASSY PIPING ASSY | ジャッキ絞り追加 |

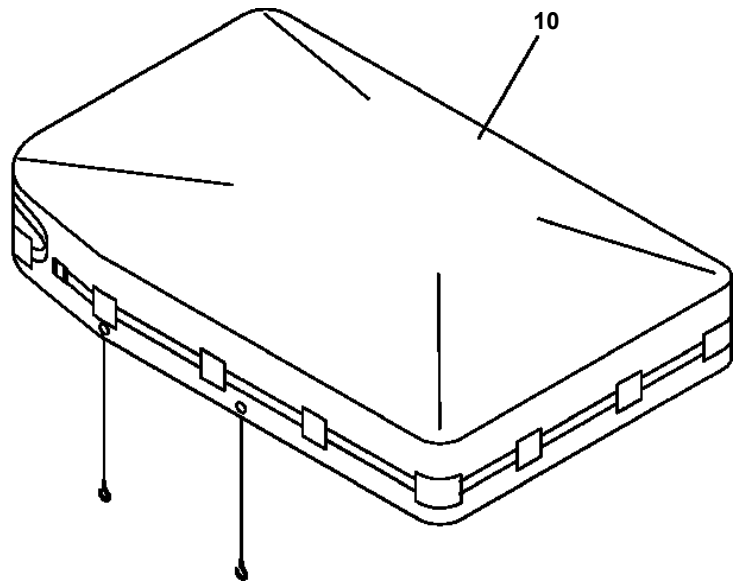
AT-100-5 42063531631 UPPER,LOWER,HINO TKG-XZU600X-TYMMC6
PC5570072-00 COVER ASSY (HOSE OF SWING TABLE)



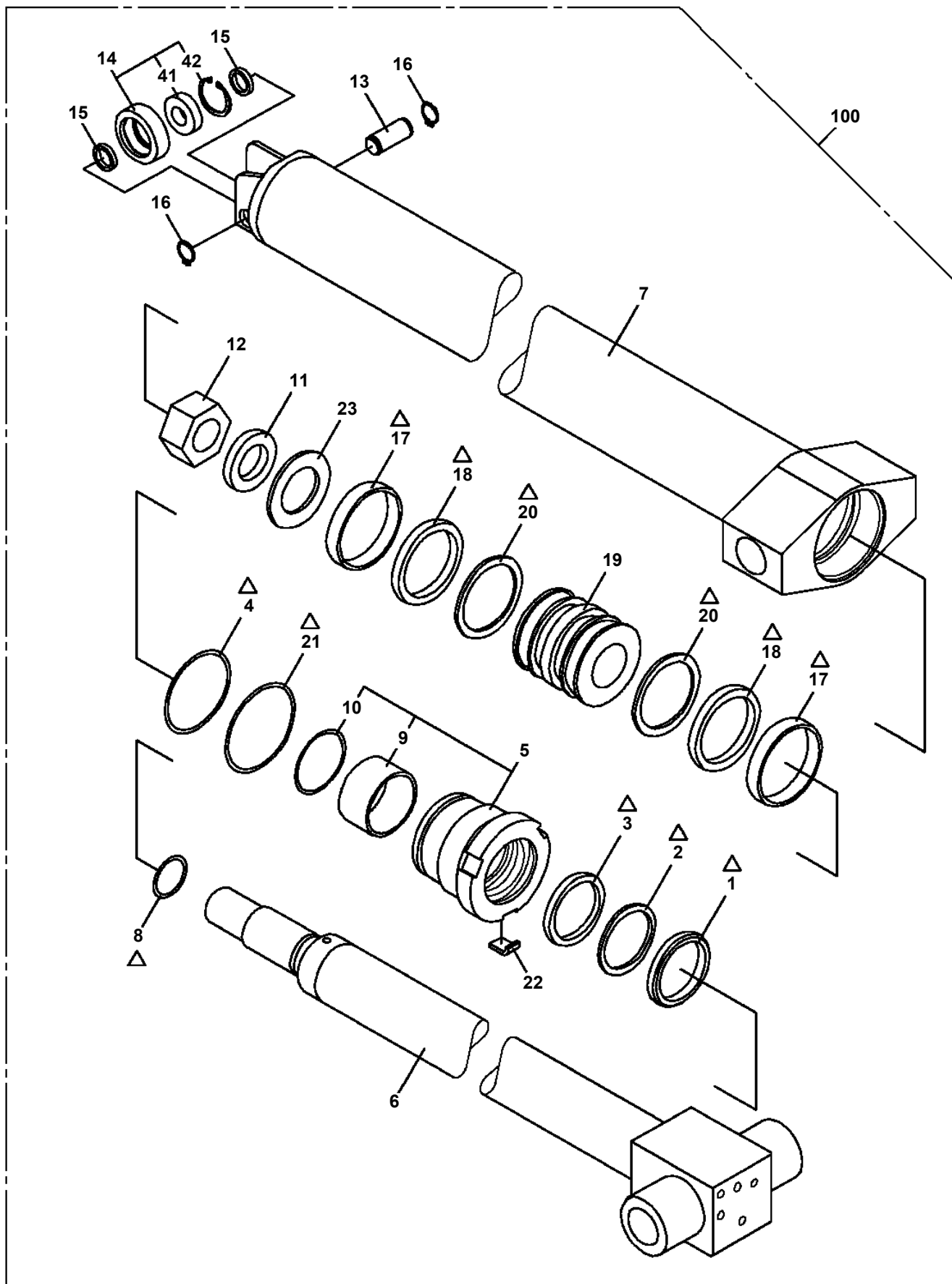
AT-100-5 42063531631 UPPER,LOWER,HINO TKG-XZU600X-TYMMC6
PC5570096-00 COVER ASSY (BUCKET/CLOTH:WHITE)



AT-100-5 42063531631 UPPER,LOWER,HINO TKG-XZU600X-TYMMC6
PC5700017-00 COVER



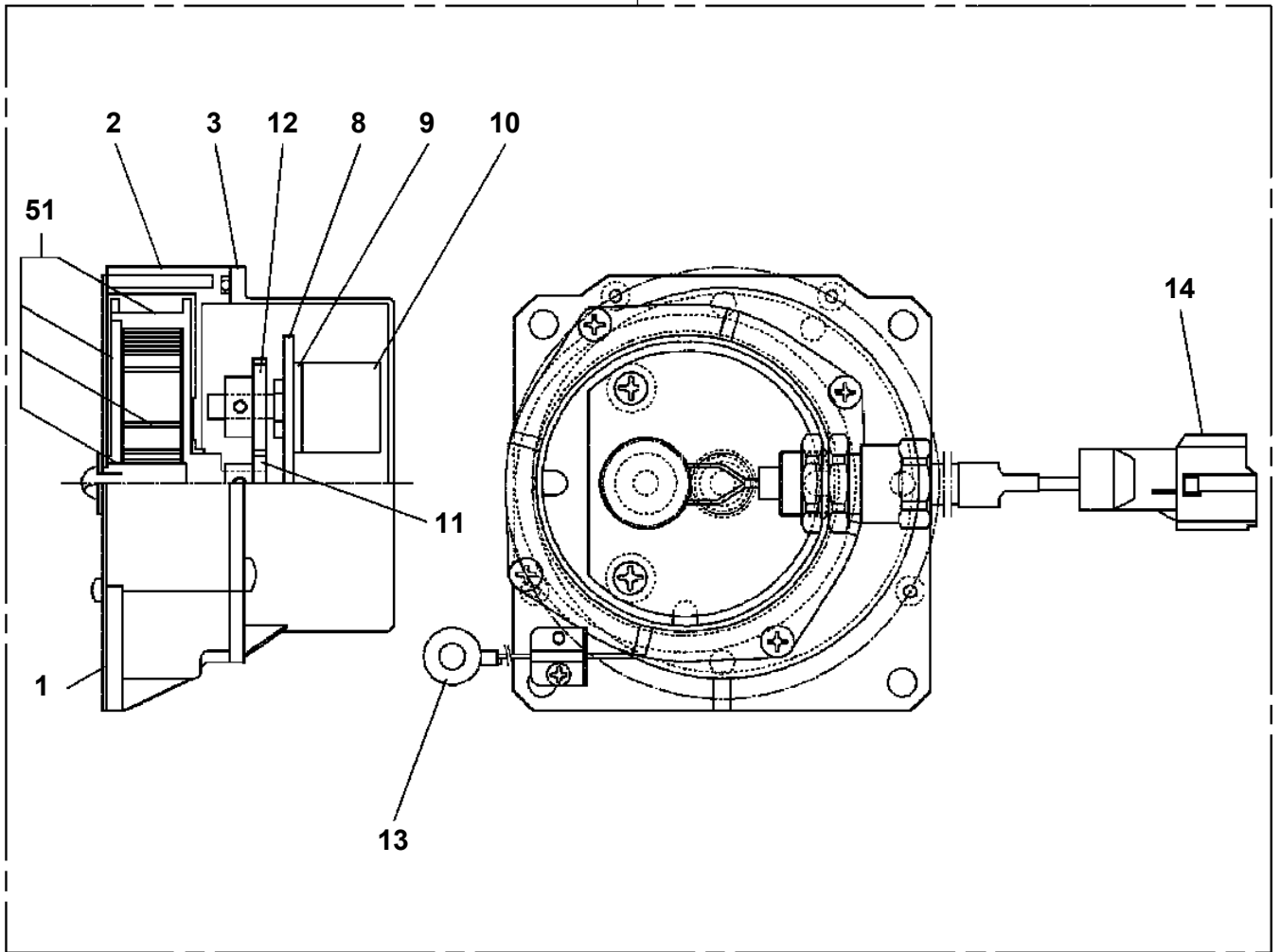
**AT-100-5 42063531631 UPPER,LOWER,HINO TKG-XZU600X-TYMMC6
PC6470078-00 CYLINDER ASSY,TELESCOPING**



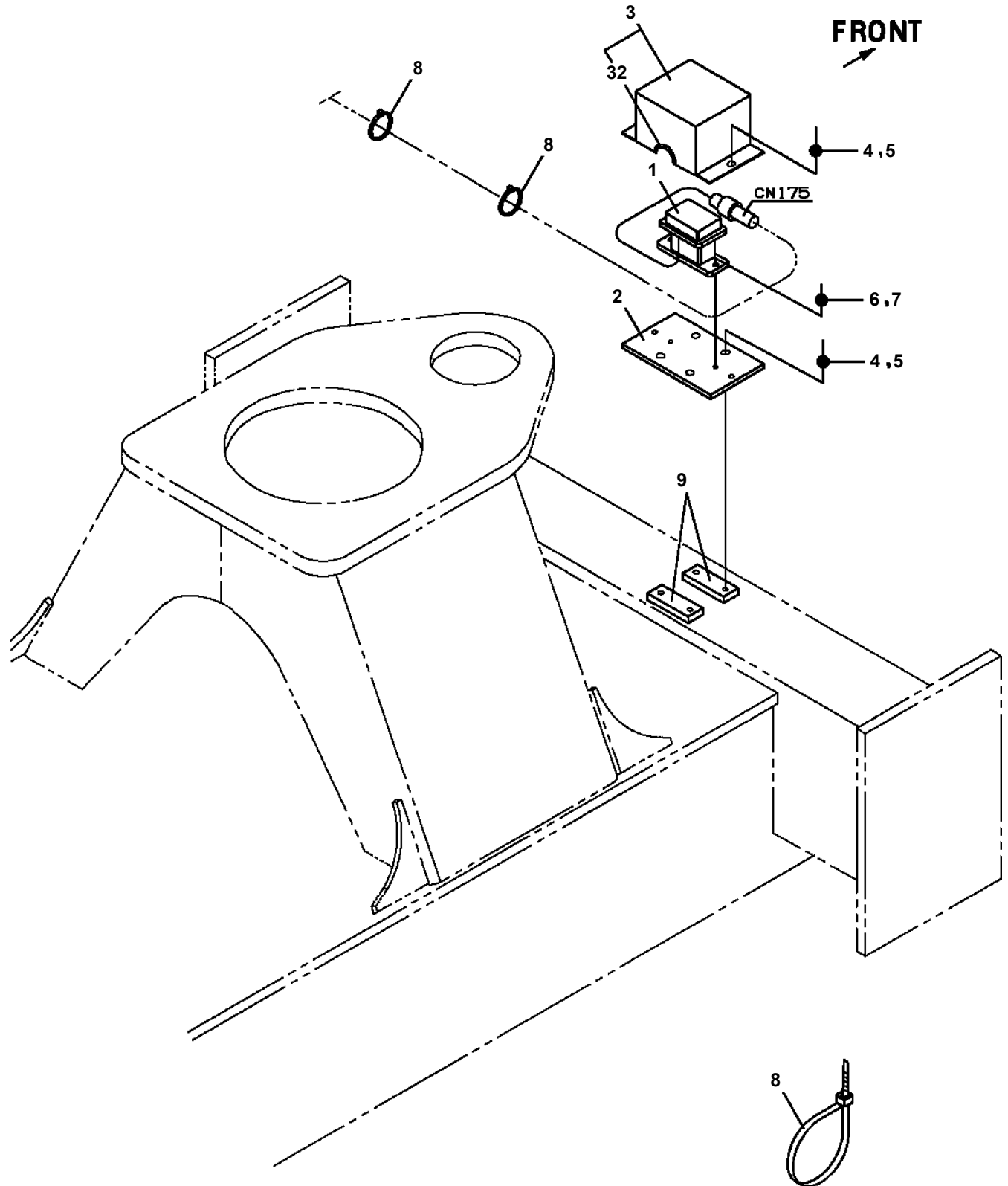
Δ :PACKING SET KEY NO.80 (KEY NO.1,2,3,4,8,17,18,20,21)

AT-100-5 42063531631 UPPER,LOWER,HINO TKG-XZU600X-TYMMC6
PD5080061-00 DETECTOR ASSY,LENGTH (BOOM)

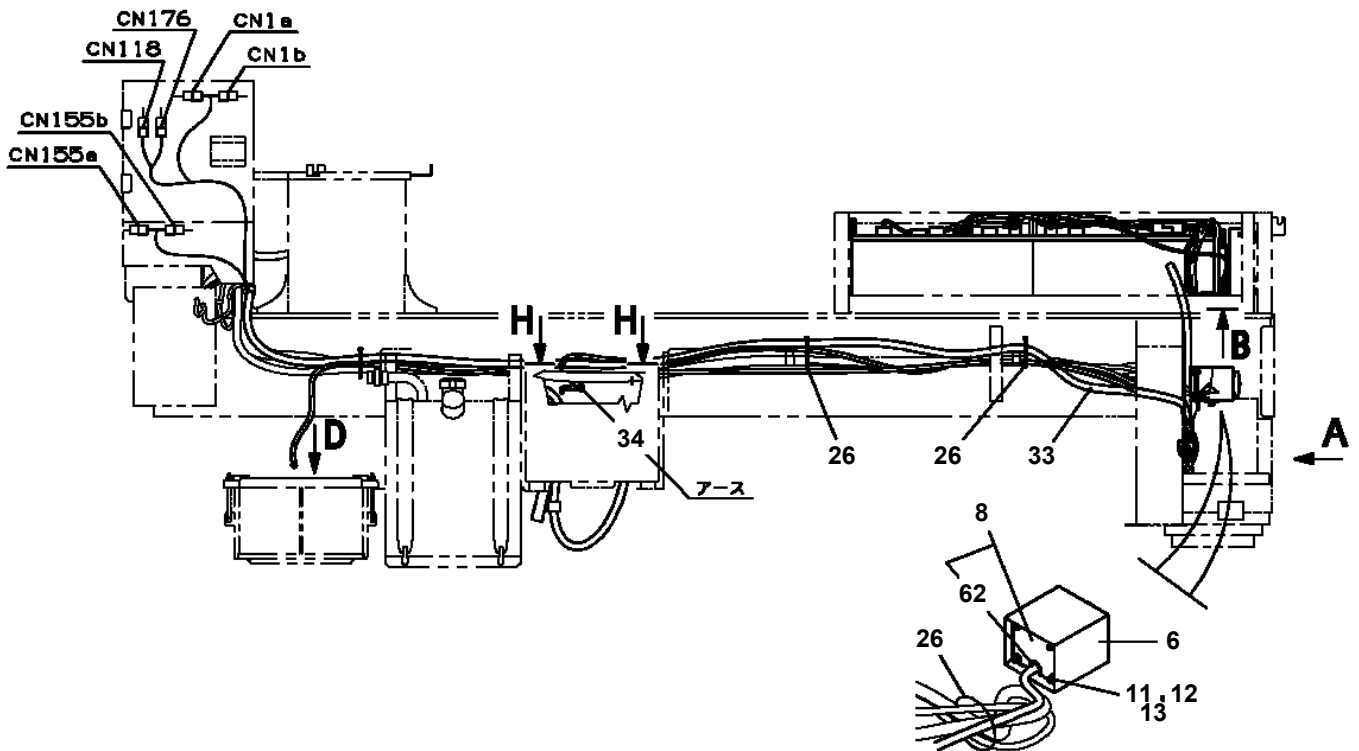
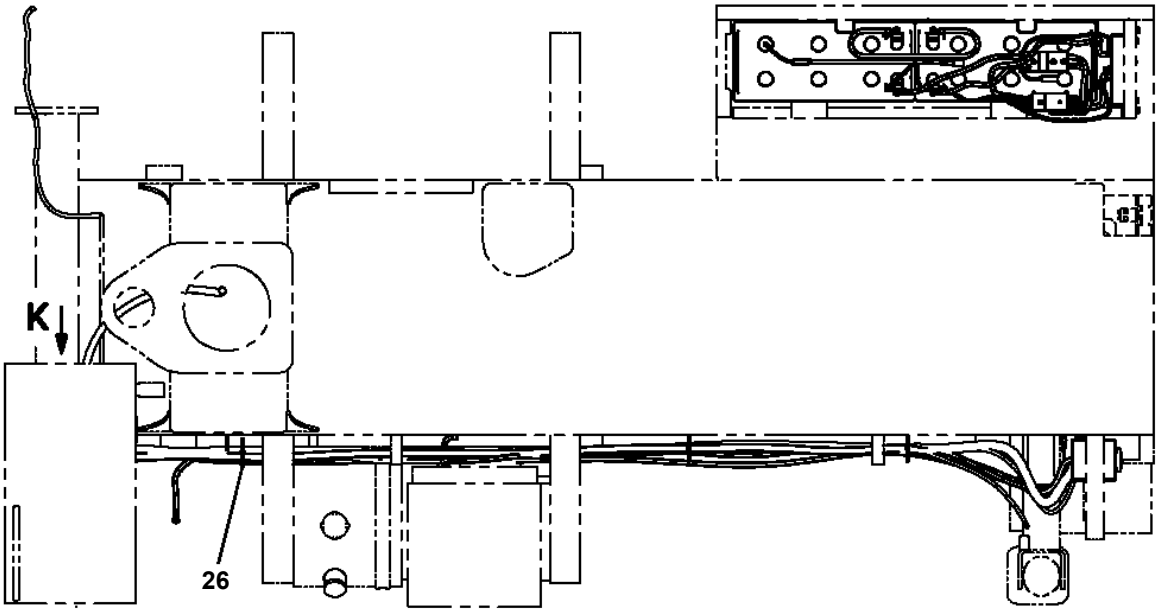
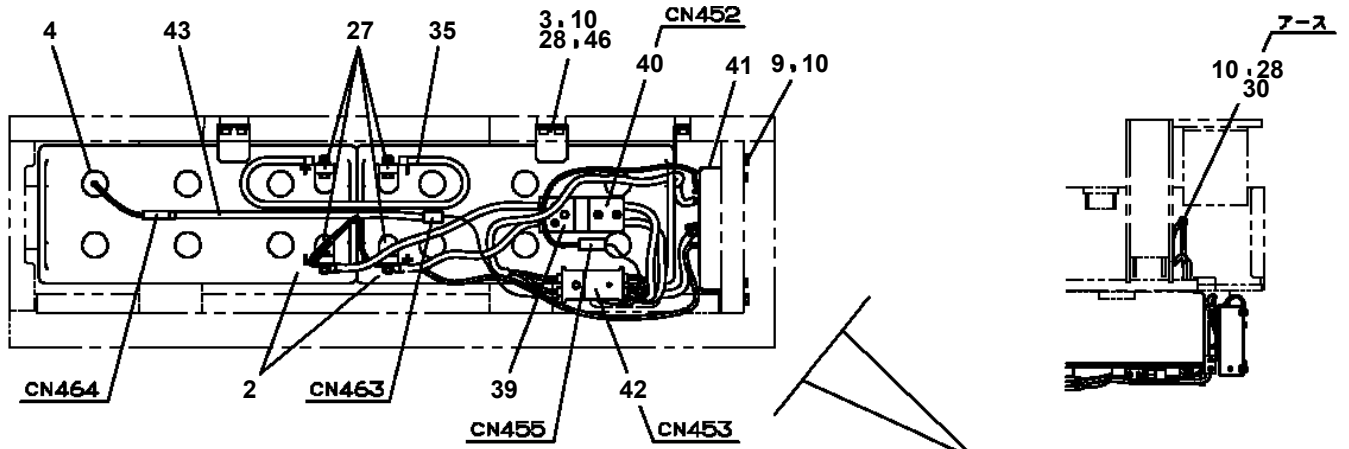
100



AT-100-5 42063531631 UPPER,LOWER,HINO TKG-XZU600X-TYMMC6
PE5020438-00 ELEC.ASSY



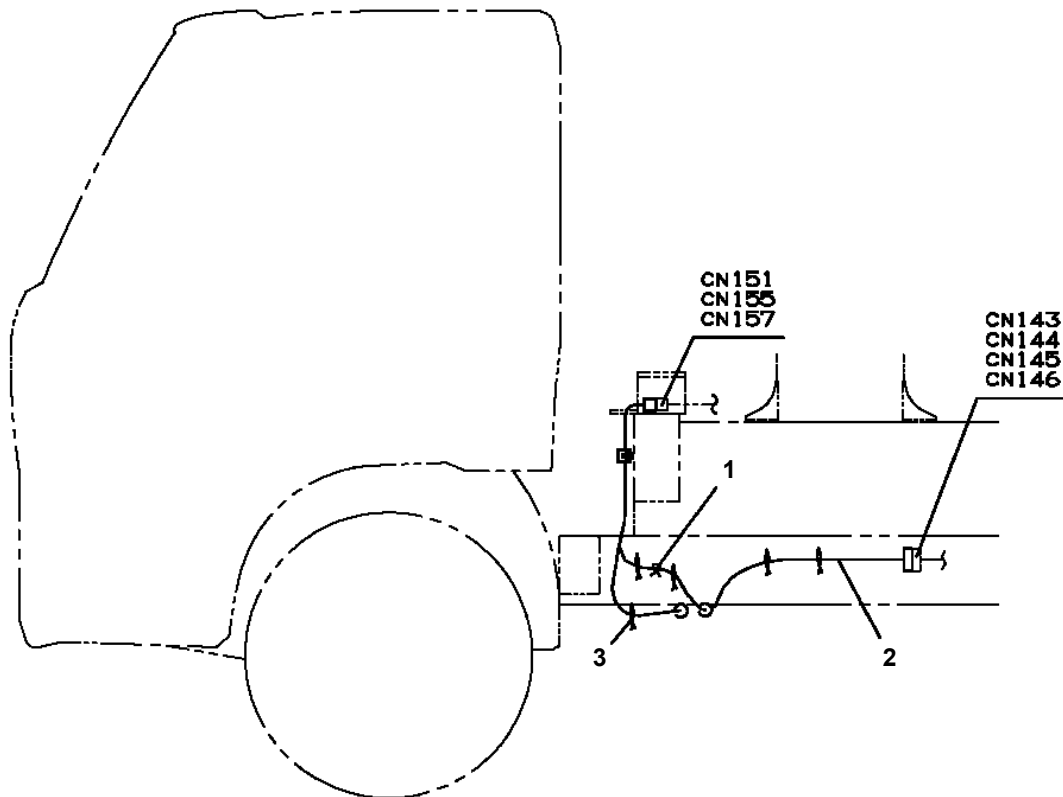
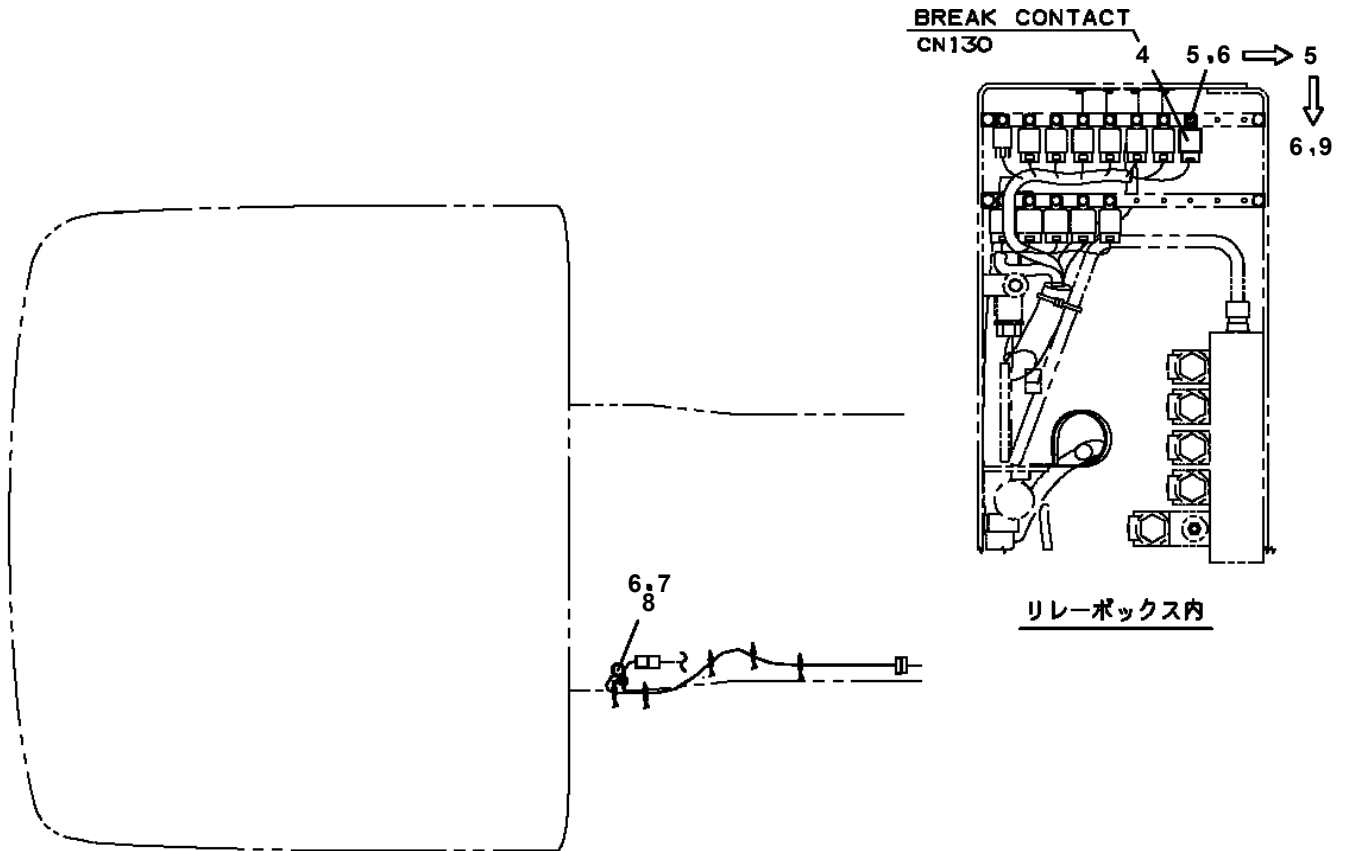
**AT-100-5 42063531631 UPPER,LOWER,HINO TKG-XZU600X-TYMMC6
PE5020730-00 ELEC.ASSY**



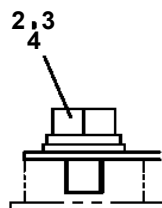
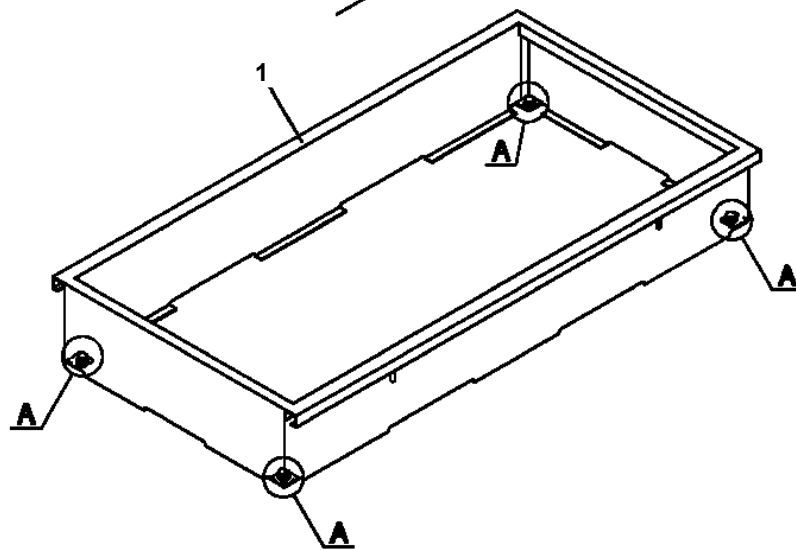
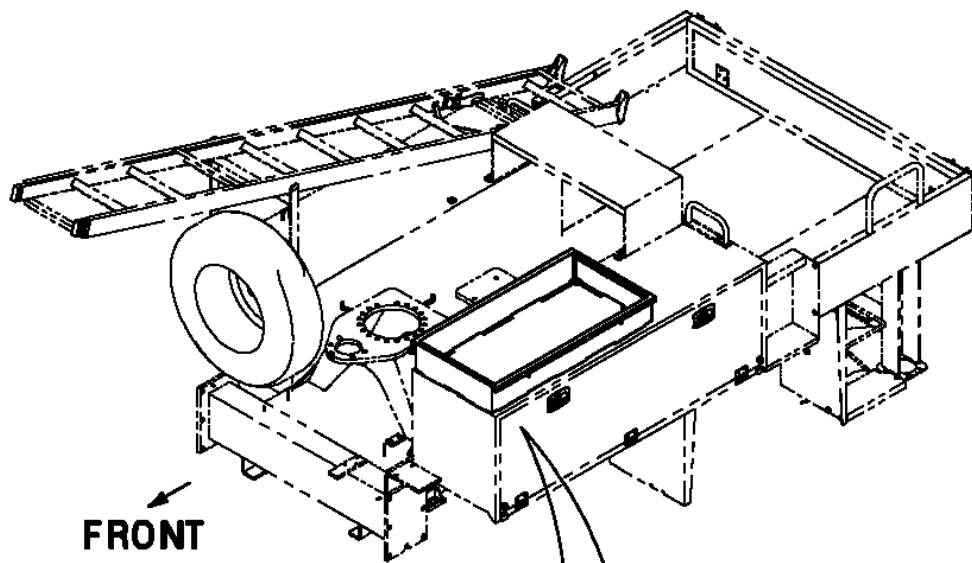
AT-100-5 42063531631 UPPER,LOWER,HINO TKG-XZU600X-TYMMC6

| Pos No. | Parts No | Parts Name | Qty | Unit | Technical Data | Serial No (Start) | Serial No (End) |
|---------|-------------|---------------------------------|-----|------|----------------|-------------------|-----------------|
| 1 | 42809631200 | LAMP ASSY (RED,WITH HARNESS) | 1 | | | | |
| 2 | 42652990200 | BUZZER ASSY | 1 | | | | |
| 3 | 42652120300 | BUZZER ASSY | 1 | | | | |
| 4 | 80172304016 | SCREW,MACHINE | 4 | | M4X16 | | |
| 5 | 90302040401 | WASHER,SPRING | 4 | | 4 | | |
| 6 | 90201200400 | NUT | 4 | | M4 | | |
| 7 | 90303070401 | WASHER,PLAIN | 8 | | 4 | | |
| 8 | 42509530100 | PLATE,NAME (EXHAUST GASU ALARM) | 1 | | | | |
| 9 | 42512090100 | HARNESS | 1 | | | | |
| 10 | 42971431200 | PLATE,CAUTION | 1 | | | | |
| 11 | 42971431400 | SWITCH ASSY (WITH HARNESS) | 1 | | | | |
| 12 | 91810130240 | FASTENER | 5 | | | | |
| 13 | 42971491400 | PLATE,NAME | 1 | | | | |

**AT-100-5 42063531631 UPPER,LOWER,HINO TKG-XZU600X-TYMMC6
PE5070038-02 ELEC.ASSY,CARRIER (POWER SAVING RELAY)**

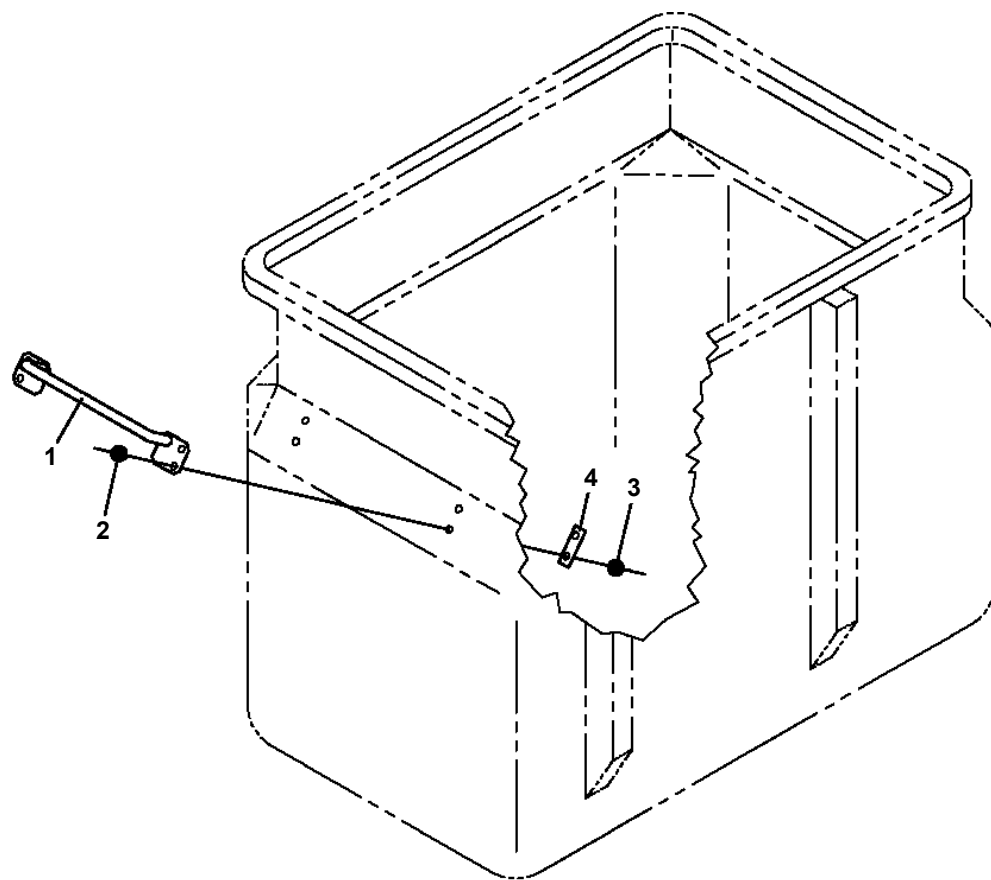


AT-100-5 42063531631 UPPER,LOWER,HINO TKG-XZU600X-TYMMC6
PG5200020-00 GUARD ASSY (UPPER STORAGE ON LEFT TOOL BOX)



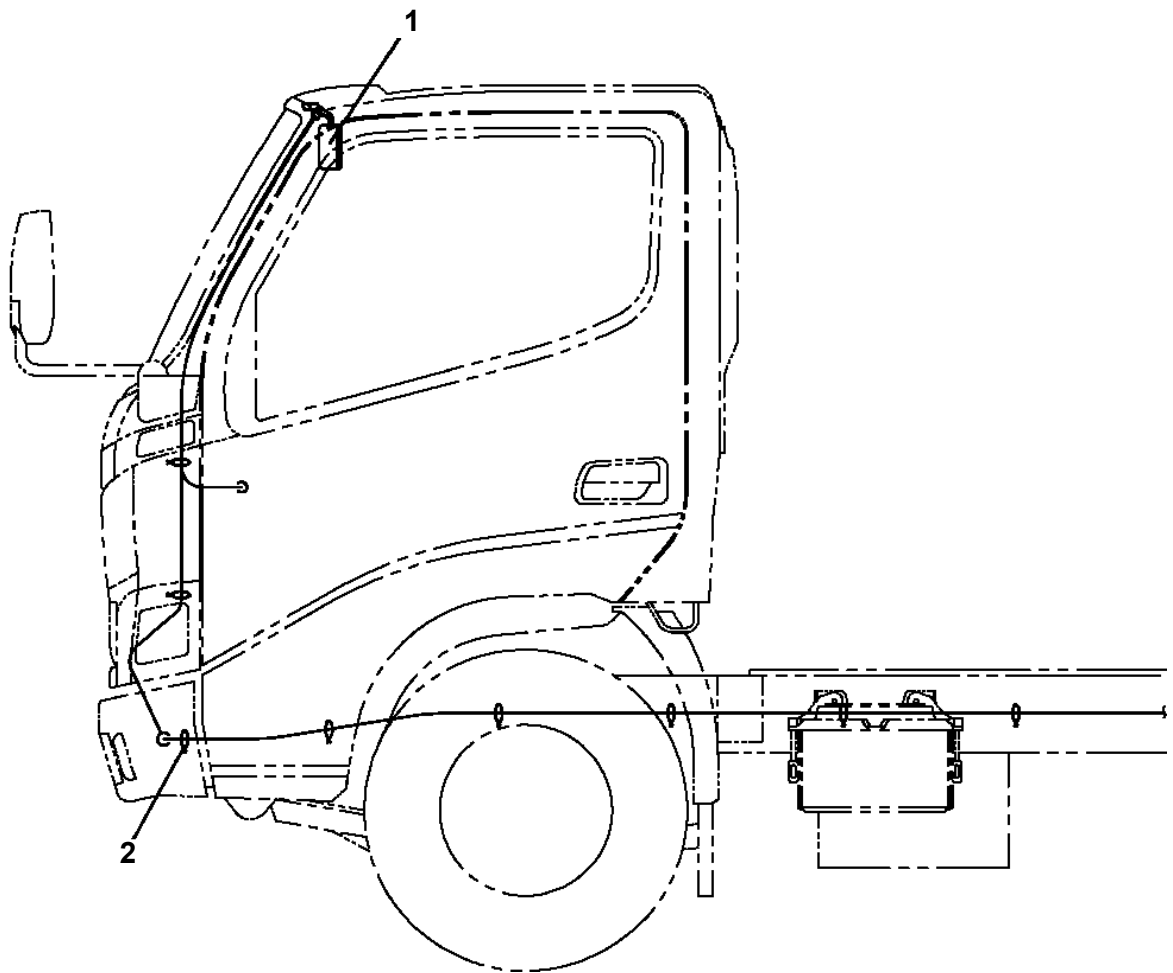
A
(4ヶ所)

AT-100-5 42063531631 UPPER,LOWER,HINO TKG-XZU600X-TYMMC6
PG5260004-00 GRIP ASSY



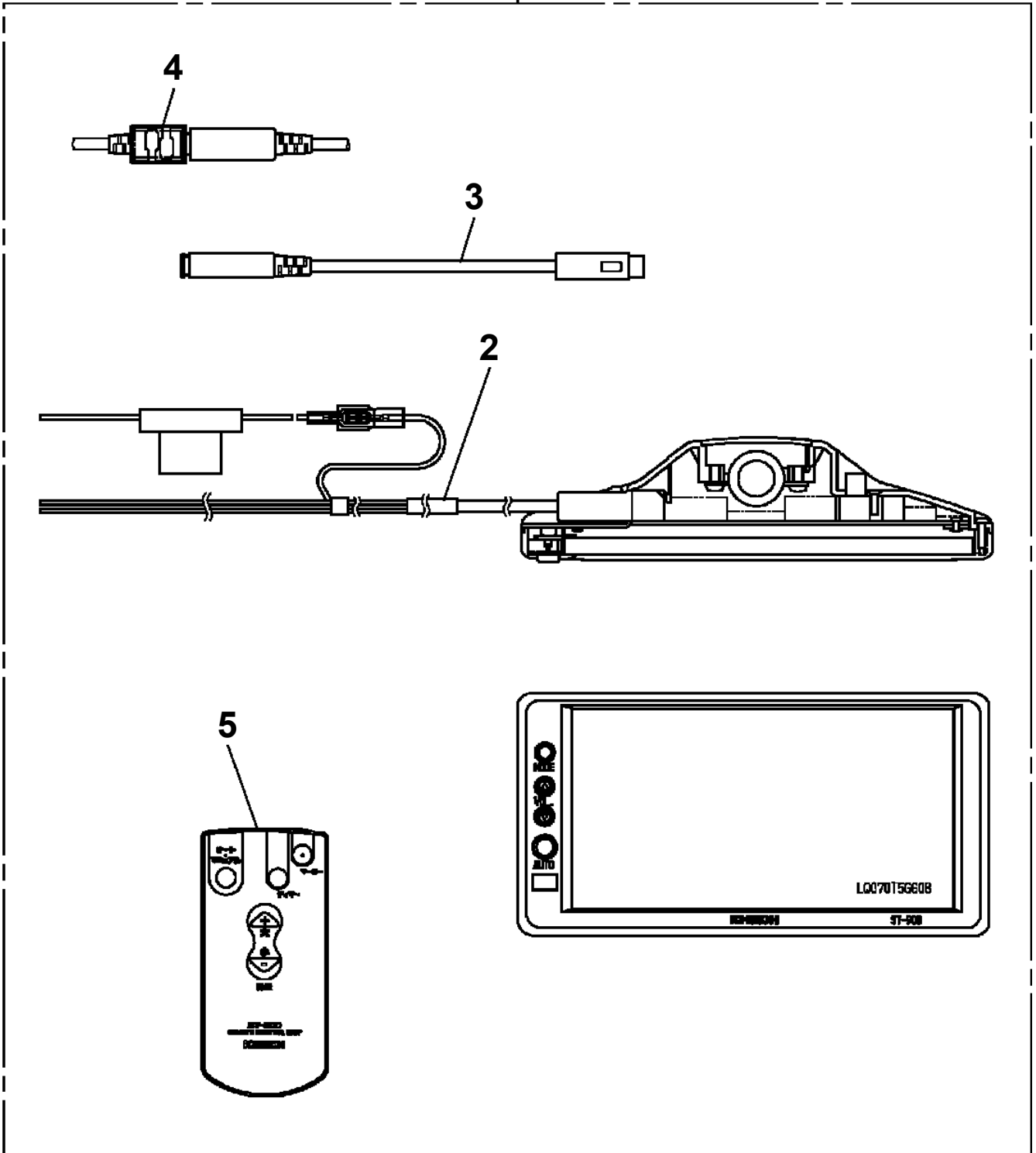
参考取付位置

AT-100-5 42063531631 UPPER,LOWER,HINO TKG-XZU600X-TYMMC6
PH1700283-00 VIEW SYSTEM (MONITOR)

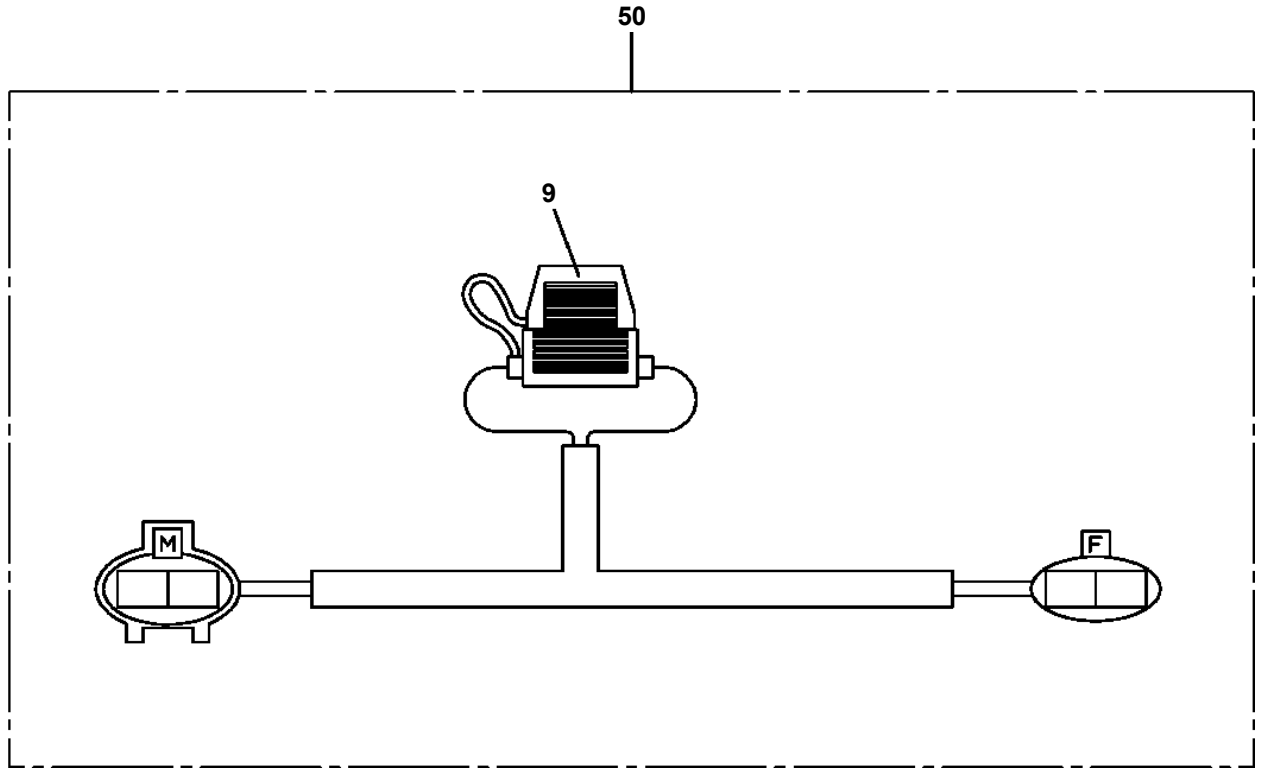


AT-100-5 42063531631 UPPER,LOWER,HINO TKG-XZU600X-TYMMC6
PH1710015-00 DISPLAY

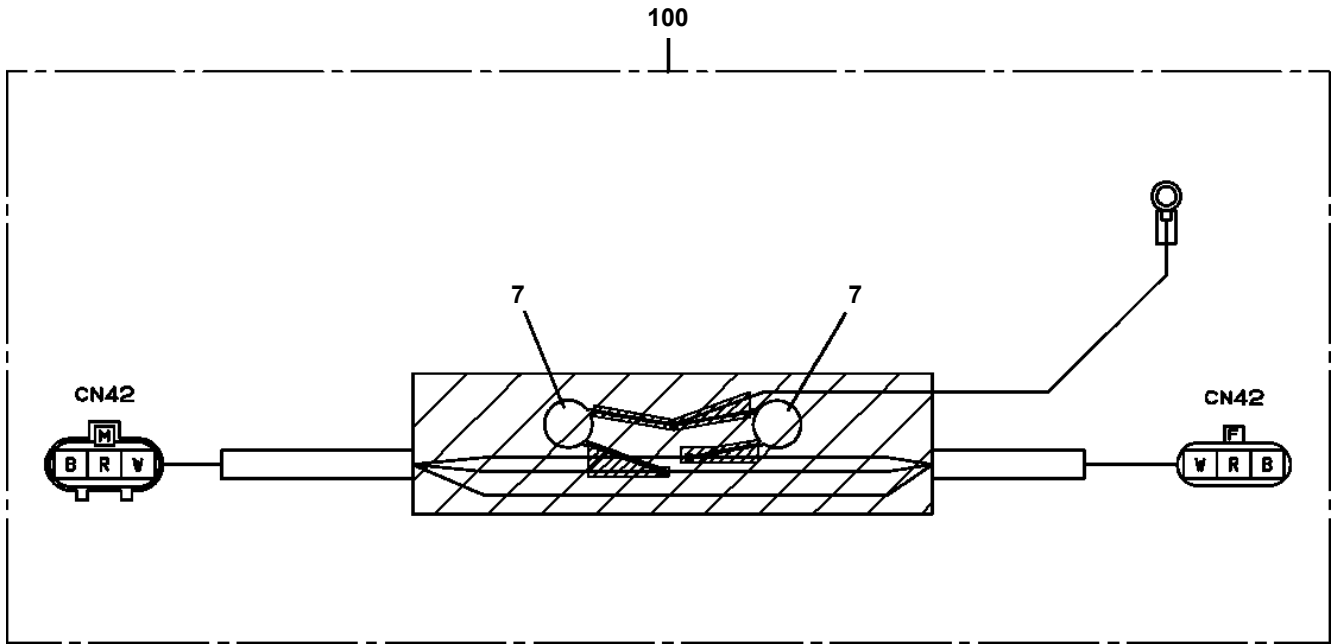
100



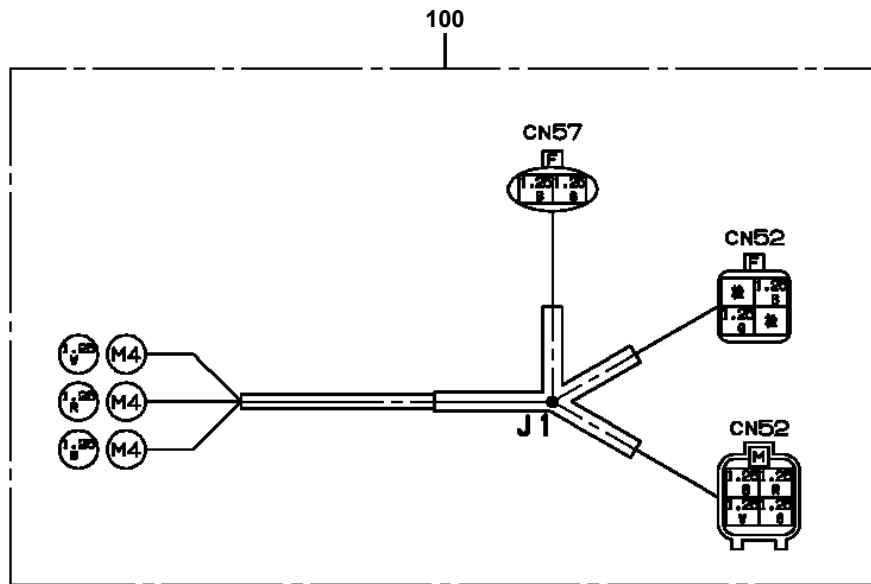
**AT-100-5 42063531631 UPPER,LOWER,HINO TKG-XZU600X-TYMMC6
PH5030474-01 HARNESS**



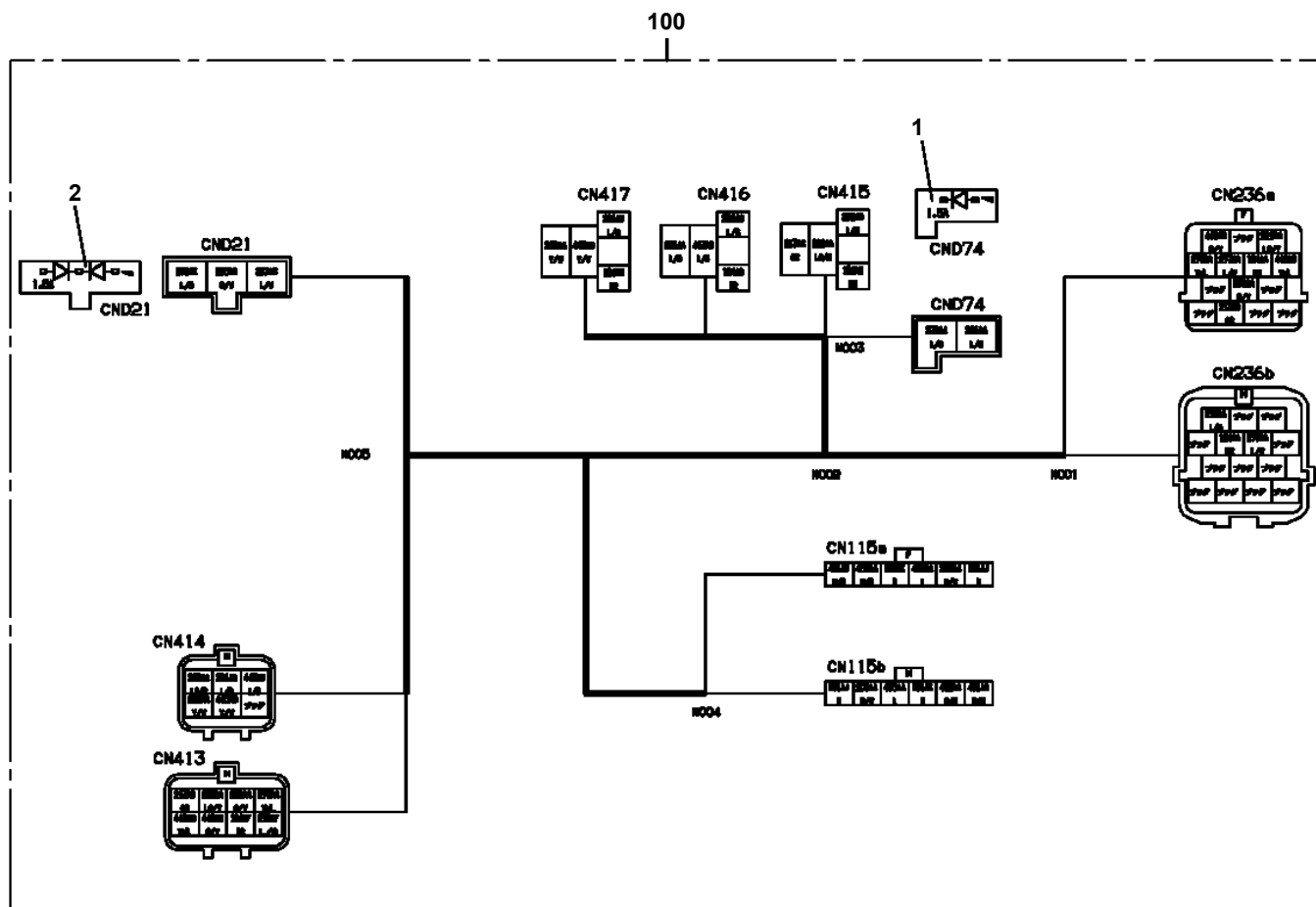
AT-100-5 42063531631 UPPER,LOWER,HINO TKG-XZU600X-TYMMC6
PH5030996-00 HARNESS



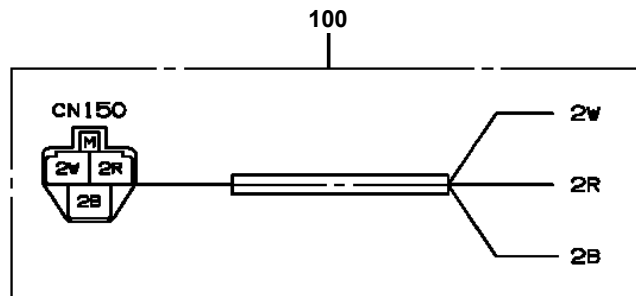
AT-100-5 42063531631 UPPER,LOWER,HINO TKG-XZU600X-TYMMC6
PH5032117-00 HARNESS



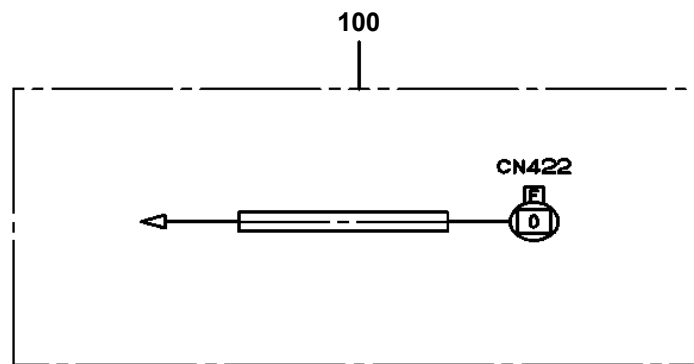
AT-100-5 42063531631 UPPER,LOWER,HINO TKG-XZU600X-TYMMC6
PH5032256-00 HARNESS



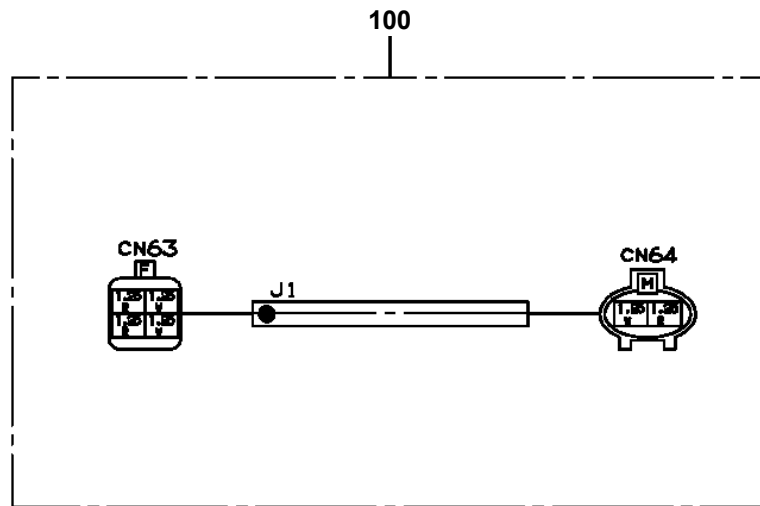
AT-100-5 42063531631 UPPER,LOWER,HINO TKG-XZU600X-TYMMC6
PH5032272-00 HARNESS



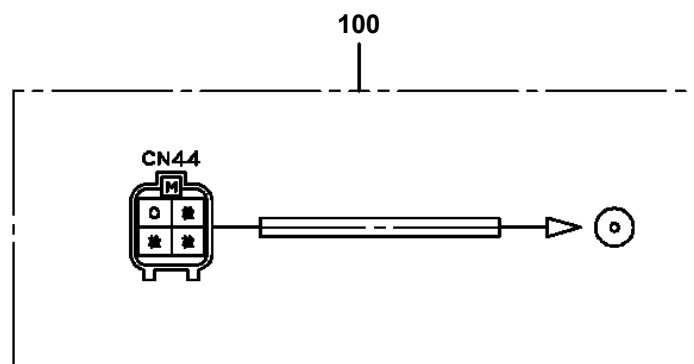
**AT-100-5 42063531631 UPPER,LOWER,HINO TKG-XZU600X-TYMMC6
PH5034162-00 HARNESS**



AT-100-5 42063531631 UPPER,LOWER,HINO TKG-XZU600X-TYMMC6
PH5034168-00 HARNESS

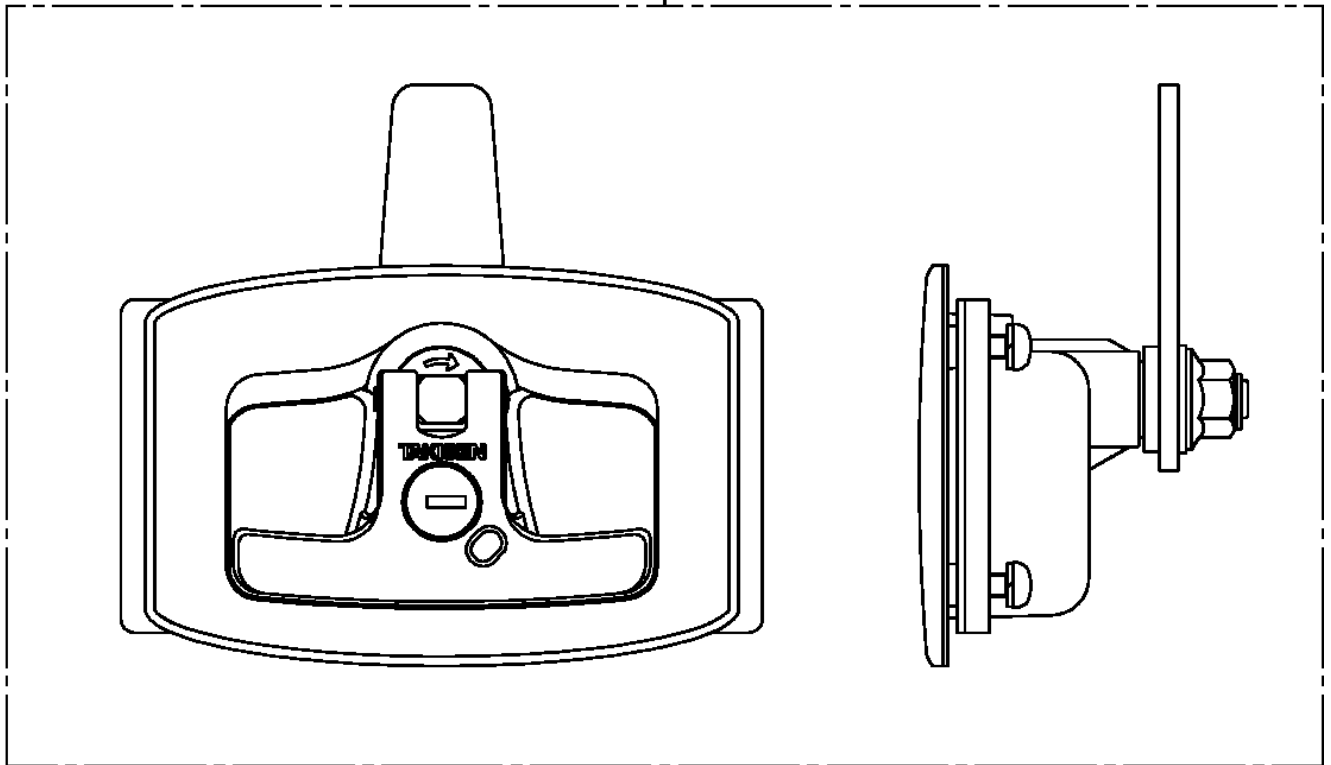


AT-100-5 42063531631 UPPER,LOWER,HINO TKG-XZU600X-TYMMC6
PH5034176-00 HARNESS



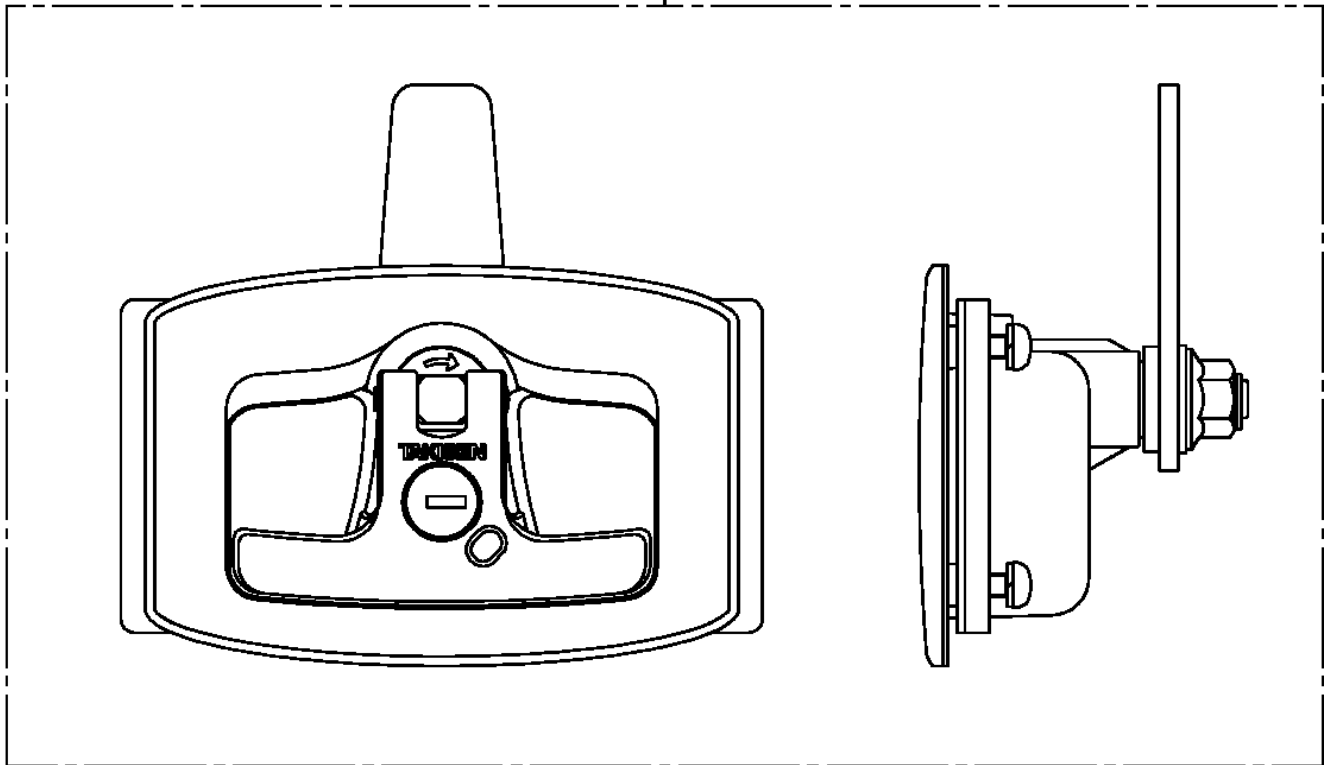
**AT-100-5 42063531631 UPPER,LOWER,HINO TKG-XZU600X-TYMMC6
PH5190001-00 HANDLE**

1



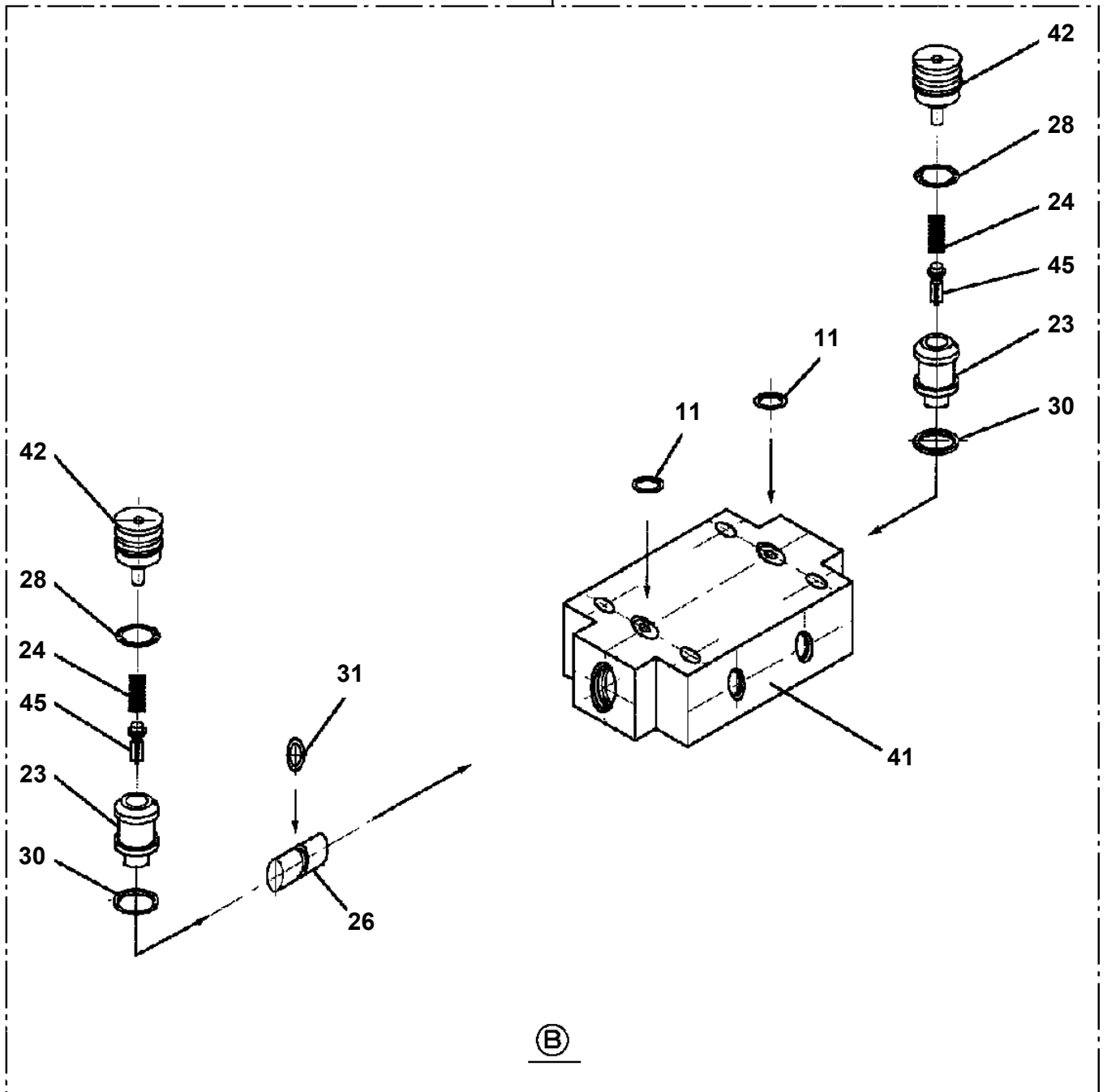
**AT-100-5 42063531631 UPPER,LOWER,HINO TKG-XZU600X-TYMMC6
PH5190001-00 HANDLE**

1



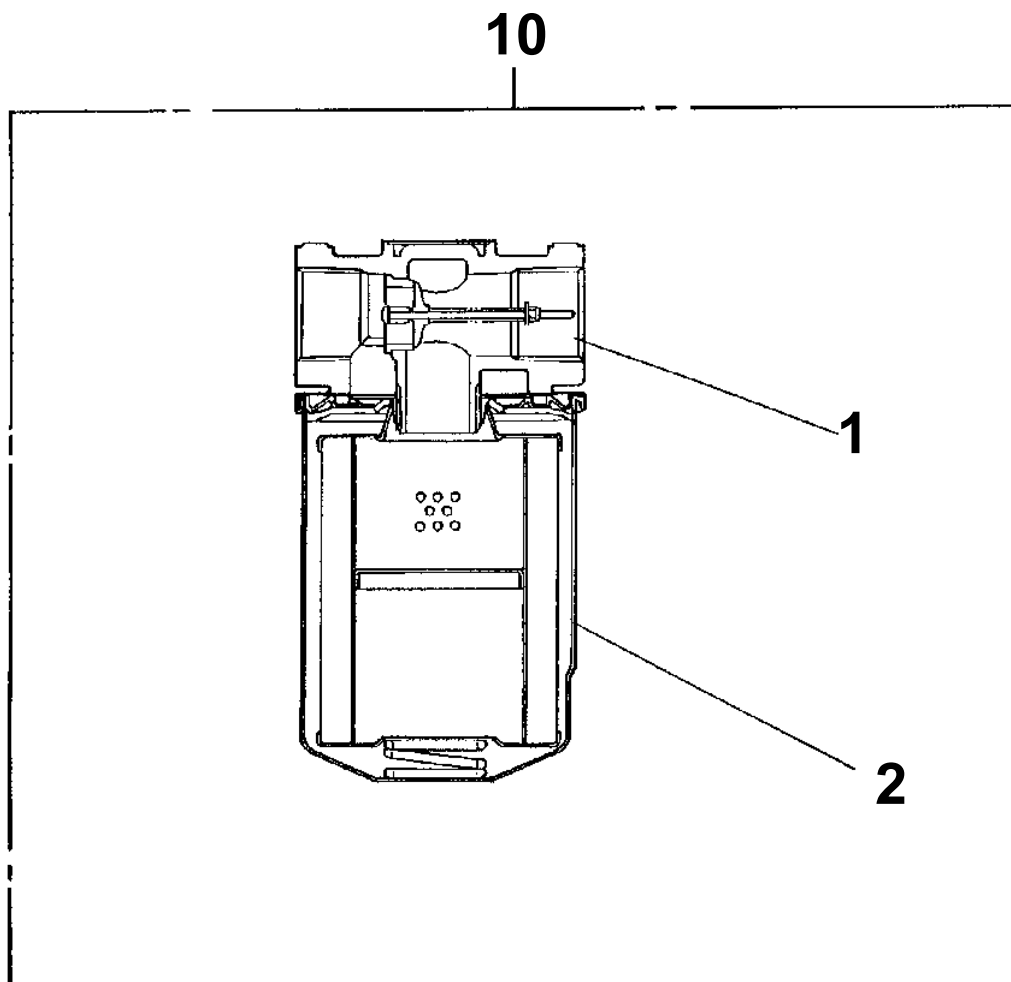
AT-100-5 42063531631 UPPER,LOWER,HINO TKG-XZU600X-TYMMC6
PI1140133-01 VALVE,CHECK

100

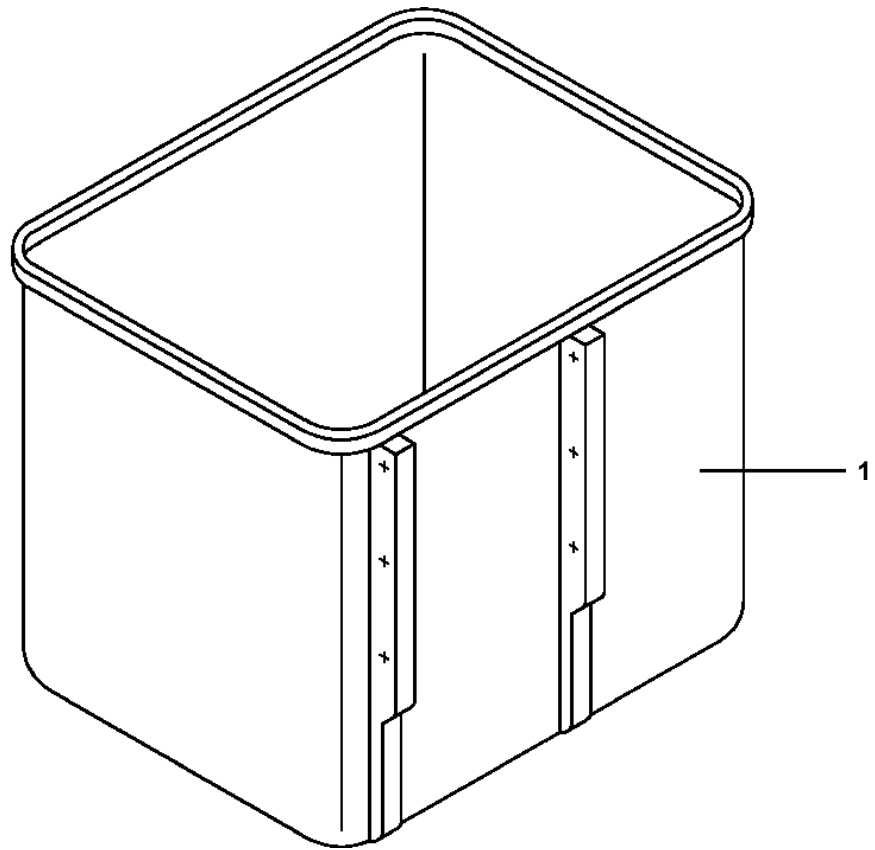


AT-100-5 42063531631 UPPER,LOWER,HINO TKG-XZU600X-TYMMC6
PI1300061-02 FILTER,OIL (YAMASHIN)

Assembly Name FILTER, OIL



AT-100-5 42063531631 UPPER,LOWER,HINO TKG-XZU600X-TYMMC6
PJ3010261-00 BUCKET (200KG STRAIGHT/WITH INNER)



CLICK HERE TO **DOWNLOAD** THE COMPLETE MANUAL

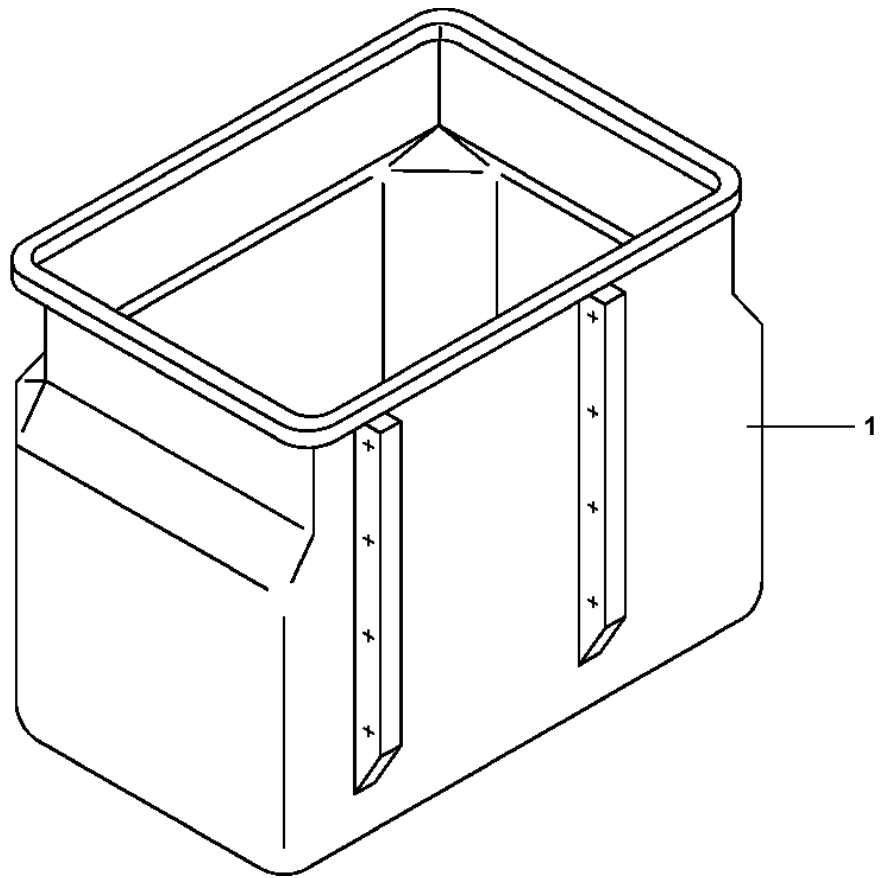
- Thank you very much for reading the preview of the manual.
- You can download the complete manual from: www.heydownloads.com by clicking the link below



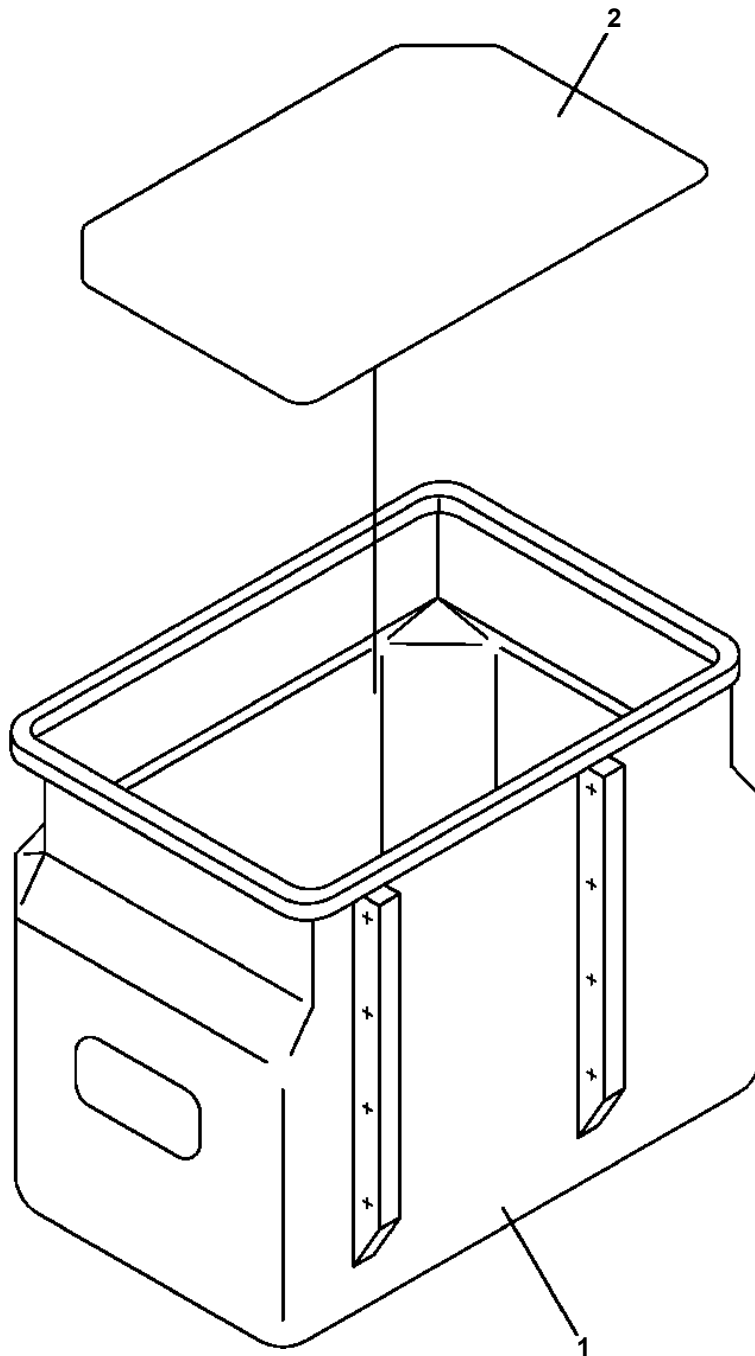
- Please note: If there is no response to CLICKING the link, please download this PDF first and then click on it.

CLICK HERE TO **DOWNLOAD** THE COMPLETE MANUAL

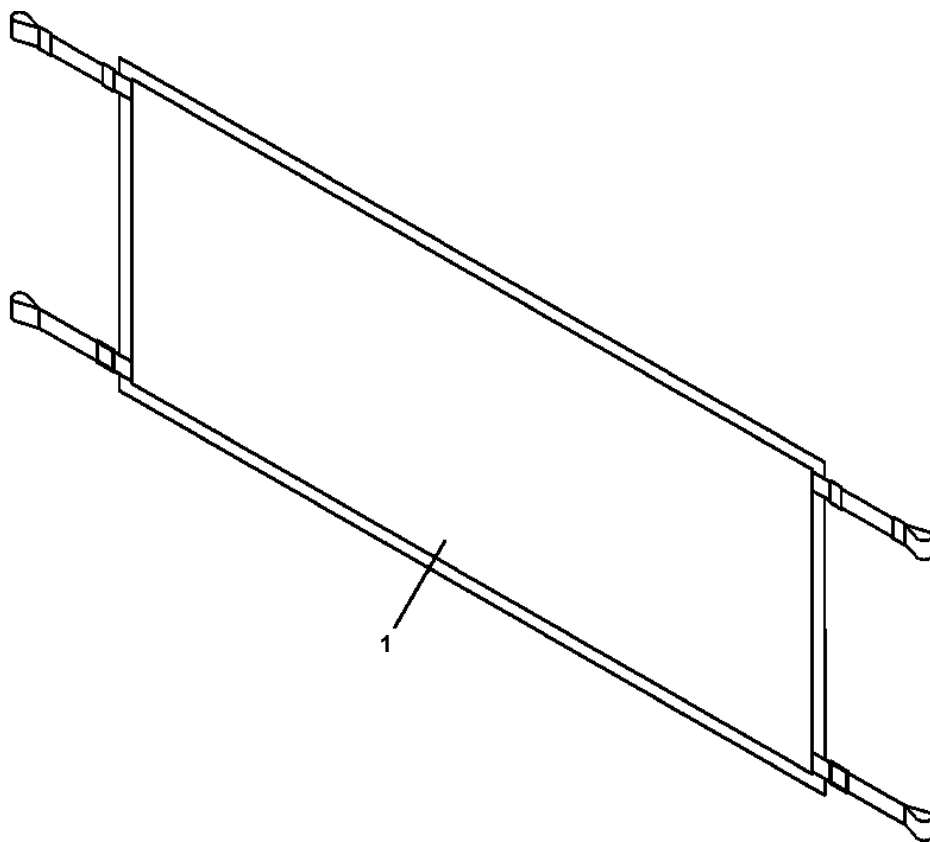
**AT-100-5 42063531631 UPPER,LOWER,HINO TKG-XZU600X-TYMMC6
PJ3010317-00 BUCKET (WHITE/WITHOUT BOSS)**



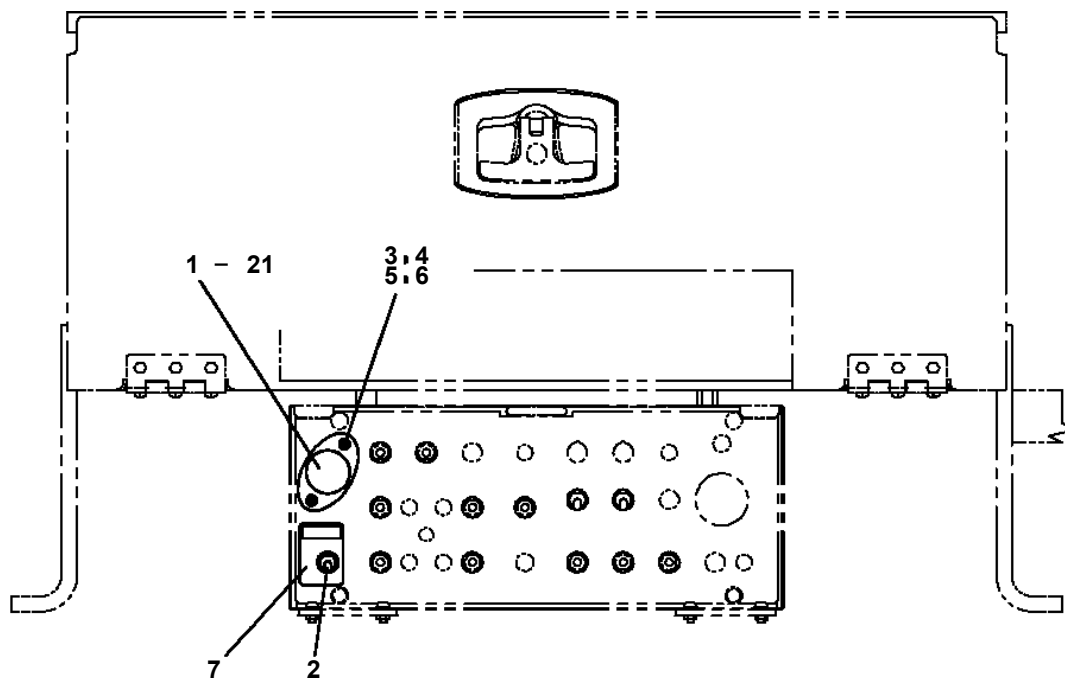
AT-100-5 42063531631 UPPER,LOWER,HINO TKG-XZU600X-TYMMC6
PJ3010366-00 BUCKET (WHITE/WITH BOSS)



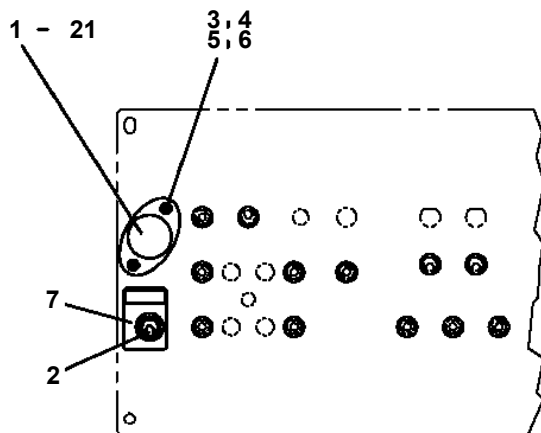
AT-100-5 42063531631 UPPER,LOWER,HINO TKG-XZU600X-TYMMC6
PK1330325-00 COVER



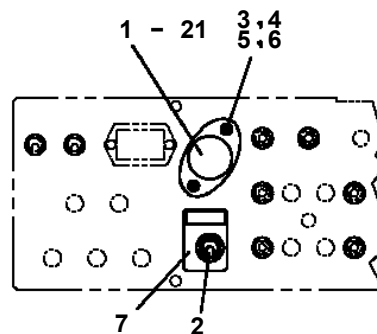
AT-100-5 42063531631 UPPER,LOWER,HINO TKG-XZU600X-TYMMC6
 PL5020079-01 LAMP ASSY (LOWER CONTROLS)



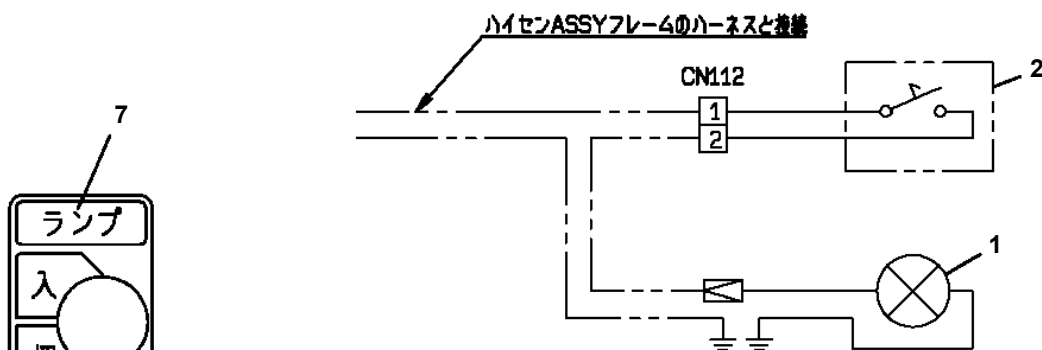
後端操作部



後端操作部 L仕様の場合



後端操作部 D仕様の場合



回路図

AT-100-5 42063531631 UPPER,LOWER,HINO TKG-XZU600X-TYMMC6

| Pos No. | Parts No | Parts Name | Qty | Unit | Technical Data | Serial No (Start) | Serial No (End) | Remarks |
|---------|-------------|-------------------------|-----|------|----------------|-------------------|-----------------|---------|
| 1 | 42502381300 | SUPPORT | 1 | | | | | |
| 2 | 42503031100 | PLATE | 1 | | | | | |
| 3 | 42356280010 | HARNESS | 1 | | | | | |
| 4 | 42510601100 | HARNESS | 1 | | | | | |
| 5 | 82100001822 | FASTENER | 1 | | | | | |
| 7 | 90201200600 | NUT | 2 | | M6 | | | |
| 8 | 90302040601 | WASHER,SPRING | 2 | | 6 | | | |
| 9 | 82100002006 | CLAMP | 2 | | WR10 | | | |
| 10 | 91810130240 | FASTENER | 5 | | | | | |
| 11 | 82119434100 | CONNECTOR | 1 | | | | | |
| 12 | 80175304016 | SCREW,MACHINE | 2 | | M4X16 | | | |
| 13 | 42477640080 | PLATE,NAME | 1 | | | | | |
| 14 | 42508140100 | HARNESS | 1 | | | | | |
| 15 | 42510601500 | LAMP ASSY (LED) | 1 | | | | HK1888 | |
| 16 | 42501692000 | SUPPORT ASSY | 1 | | | | | |
| 17 | 90201200800 | NUT | 2 | | M8 | | | |
| 18 | 90302040801 | WASHER,SPRING | 2 | | 8 | | | |
| 31 | 82199105007 | LAMP (ASSY ONLY) | 1 | | | | HK1888 | |
| 32 | 90101212020 | BOLT | 1 | | M12X20 | | HK1888 | |
| 33 | 90302041201 | WASHER,SPRING | 1 | | 12 | | HK1888 | |
| 34 | 37010103570 | PIN | 1 | | | | HK1888 | |
| 41 | 42501692100 | SUPPORT | 1 | | | | | |
| 42 | 42501692200 | SUPPORT | 1 | | | | | |
| 43 | 82430138010 | KNOB | 2 | | | | | |
| 44 | 90813110020 | BOLT,WING | 1 | | M10X20 | | | |
| 45 | 90101208030 | BOLT | 2 | | M8X30 | | | |
| 46 | 90303070801 | WASHER,PLAIN | 2 | | 8 | | | |
| 47 | 37000506550 | PLATE | 2 | | T=1.6 | | | |
| 48 | 90302040801 | WASHER,SPRING | 2 | | 8 | | | |
| 51 | 42510601600 | LAMP ASSY (SQUARE TYPE) | 1 | | | HK1889 | | |

AT-100-5 42063531631 UPPER,LOWER,HINO TKG-XZU600X-TYMMC6

| Pos No. | Parts No | Parts Name | Qty | Unit | Technical Data | Serial No (Start) | Serial No (End) |
|---------|-------------|--------------------------------|-----|------|----------------|-------------------|-----------------|
| 1 | 42839551040 | LOCK ASSY (U9SL99-2,ASSY ONLY) | 2 | | | | |
| 2 | 82460027205 | HANDLE | 2 | | | | |

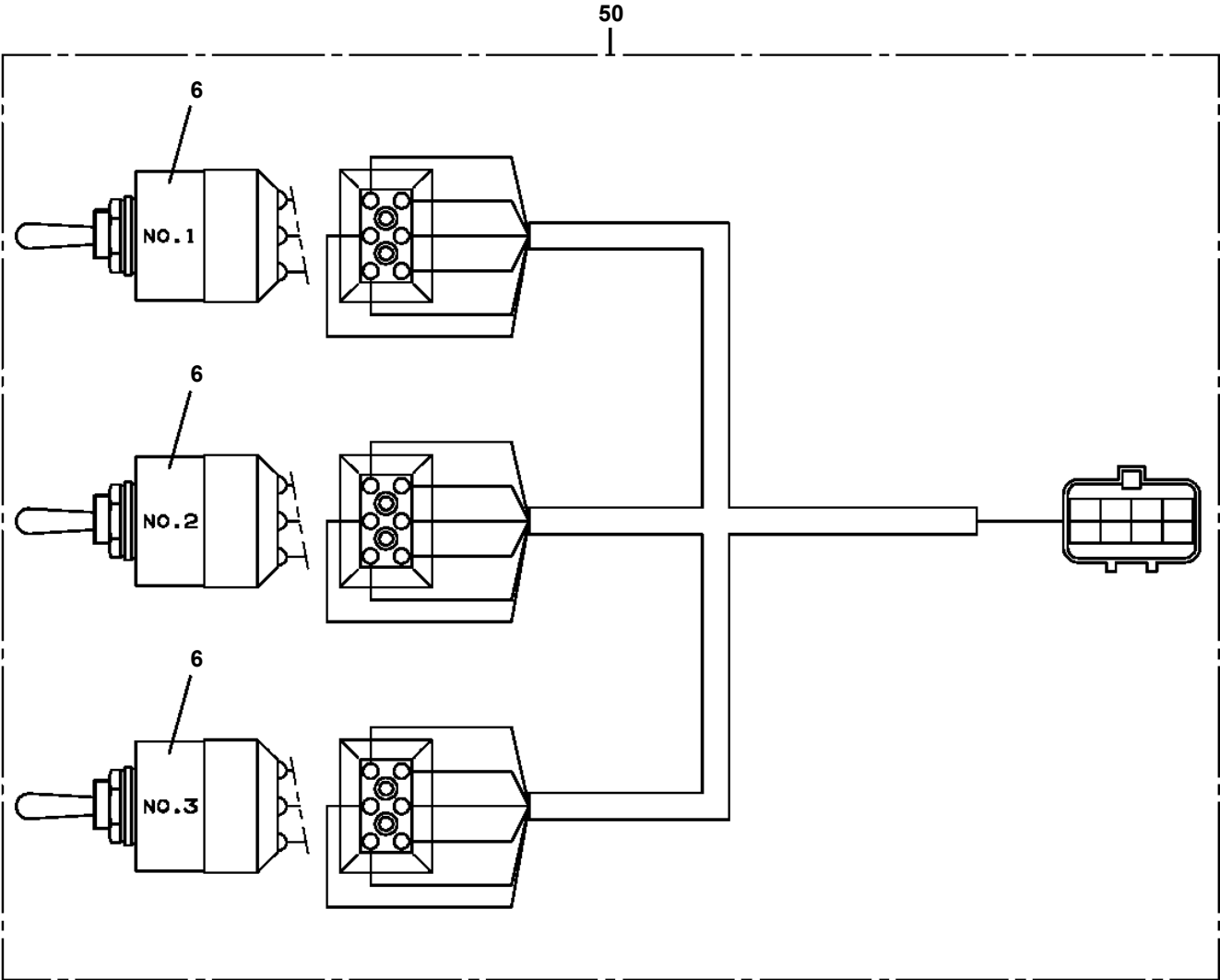
AT-100-5 42063531631 UPPER,LOWER,HINO TKG-XZU600X-TYMMC6

| Pos No. | Parts No | Parts Name | Qty | Unit | Technical Data | Serial No (Start) | Serial No (End) |
|---------|-------------|--------------------------------|-----|------|----------------|-------------------|-----------------|
| 1 | 42839551090 | LOCK ASSY (U9SL99-2,ASSY ONLY) | 2 | | | | |
| 2 | 82460027210 | HANDLE | 2 | | | | |

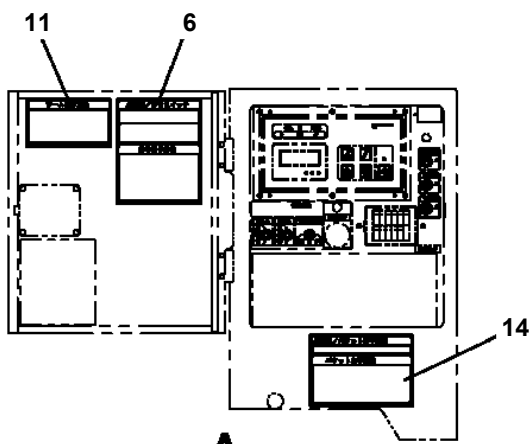
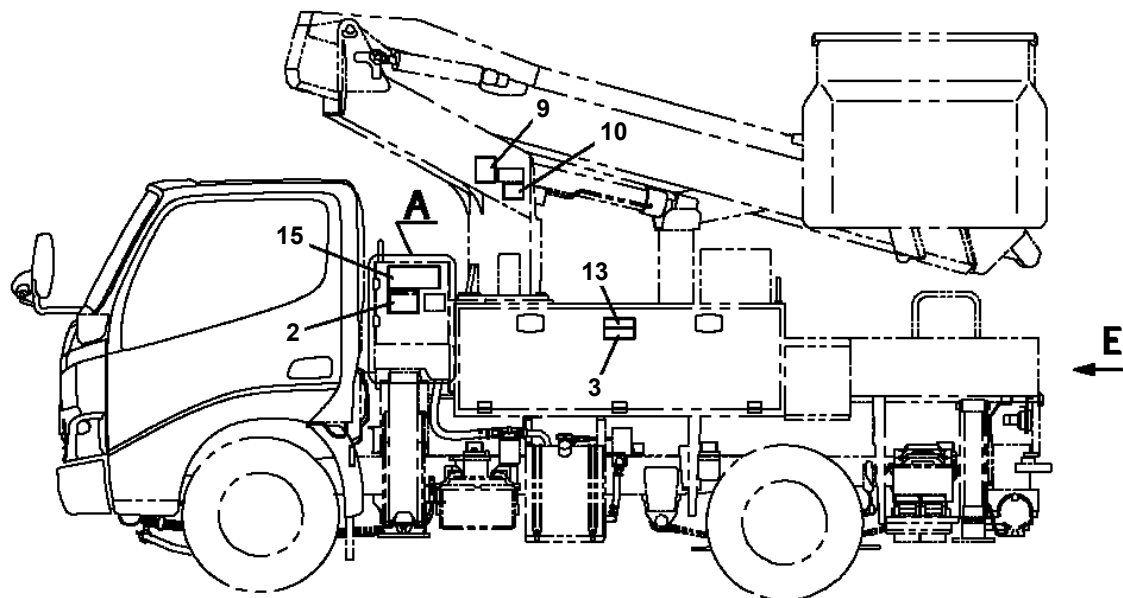
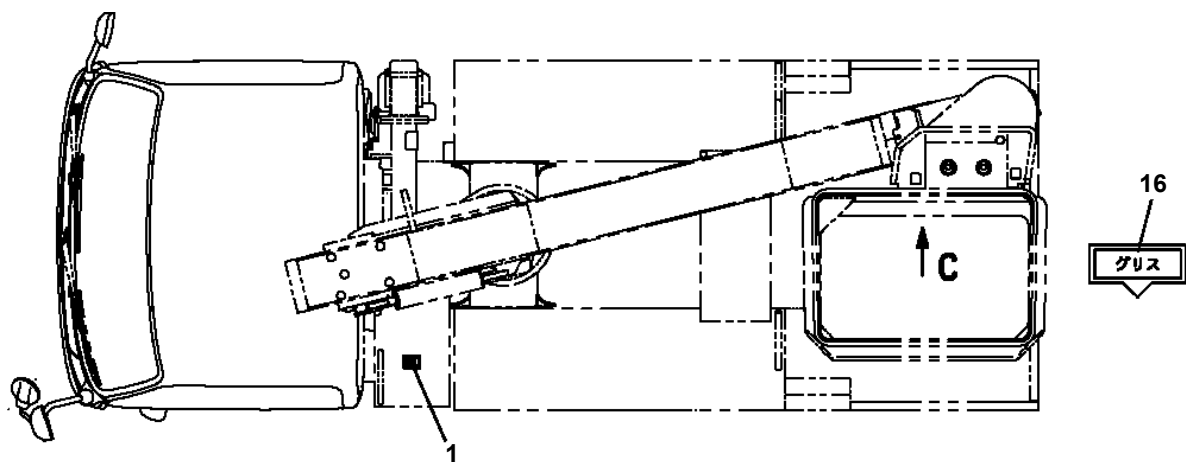
AT-100-5 42063531631 UPPER,LOWER,HINO TKG-XZU600X-TYMMC6

| Pos No. | Parts No | Parts Name | Qty | Unit | Technical Data | Serial No (Start) | Serial No (End) | Remarks |
|---------|-------------|------------------------|-----|------|----------------|-------------------|-----------------|---------|
| 1 | 36663955100 | SHAFT | 1 | | | | | |
| 2 | 80500006206 | BEARING,BALL | 1 | | | | | |
| 4 | 91001206500 | O-RING | 1 | | 1A G65 | | | |
| 5 | 36660025021 | COVER (OIL SEAL) | 1 | | | | | |
| 6 | 36660025140 | SEAL,OIL | 1 | | | | | |
| 7 | 36663485110 | RING,RETAINING | 1 | | R72 | | | |
| 8 | 36663955020 | PLATE,THRUST | 1 | | | | | |
| 9 | 36663955030 | BARREL ASSY (CYLINDER) | 1 | | | | | |
| 10 | 36663955040 | PLATE (VALVE) | 1 | | | | | |
| 11 | 36661925030 | COVER (BOTTOM) | 1 | | | | | |
| 12 | 80500006203 | BEARING,BALL | 1 | | | | | |
| 13 | 36662355110 | PIN | 2 | | | | | |
| 14 | 36663955050 | O-RING | 1 | | | | | |
| 15 | 36663955060 | BOLT | 6 | | M10X35 | | | |
| 16 | 14125151020 | KEY | 1 | | | | | |
| 17 | 36660125060 | PLUG | 2 | | PF3/8 | | | |
| 18 | 36081315130 | PROTECTOR (THREAD) | 2 | | | | | |
| 44 | 36660025100 | SPRING (PLUNGER) | 5 | | | | | |
| 45 | 14125151300 | RING,RETAINING | 1 | | | | | |
| 46 | 12645103171 | SPRING (CENTER) | 1 | | | | | |
| 100 | 36664070000 | MOTOR,OIL | 1 | | | | | |

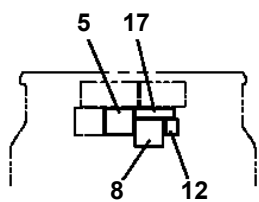
**AT-100-5 42063531631 UPPER,LOWER,HINO TKG-XZU600X-TYMMC6
PN1140164-00 SWITCH ASSY (WITH HARNESS,3 SW)**



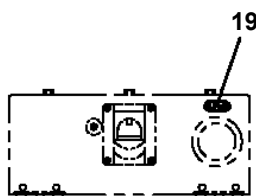
AT-100-5 42063531631 UPPER,LOWER,HINO TKG-XZU600X-TYMMC6
 PN5010698-00 NAME PLATE ASSY (VEHICLE)



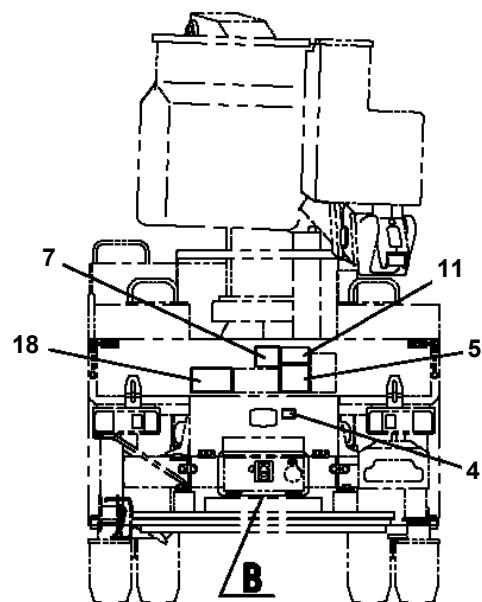
A
 扉を開いた状態



C

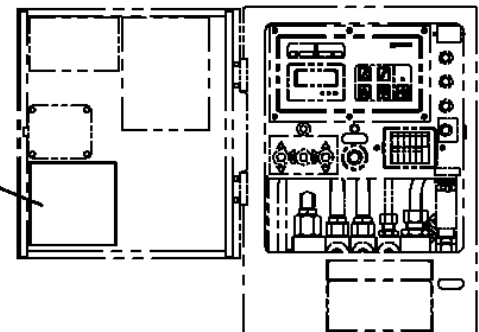
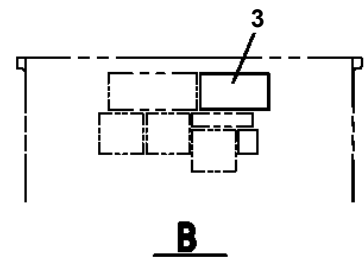
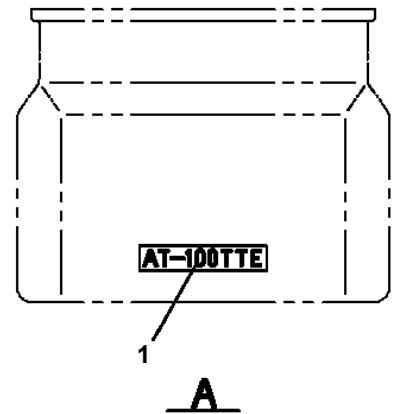
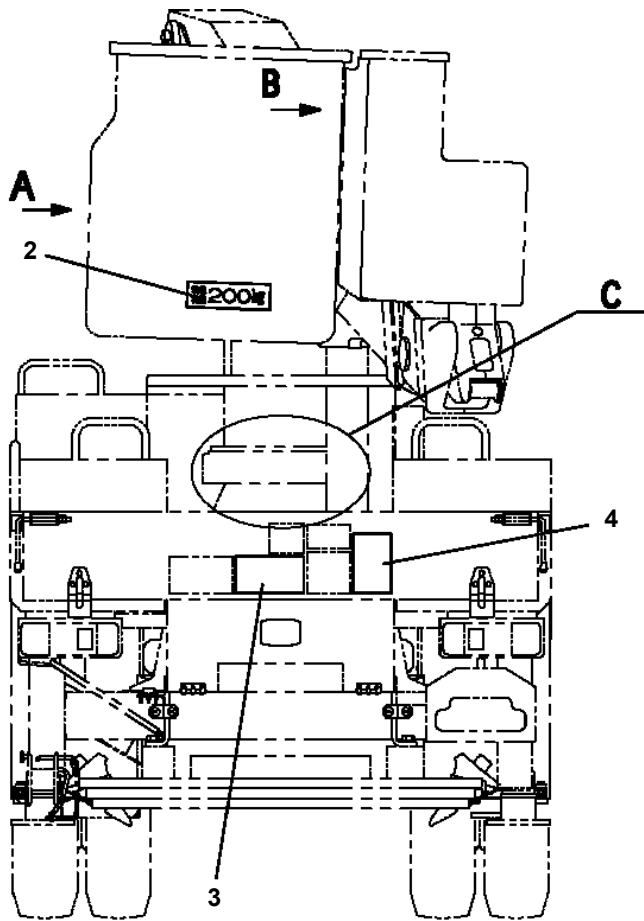


B

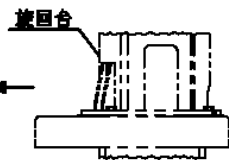
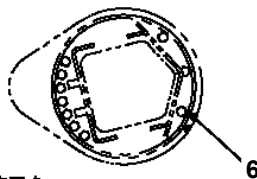


E

AT-100-5 42063531631 UPPER,LOWER,HINO TKG-XZU600X-TYMMC6
 PN5010705-00 NAME PLATE ASSY (SPECIFICATION)

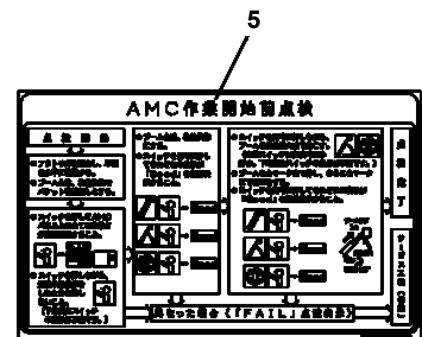
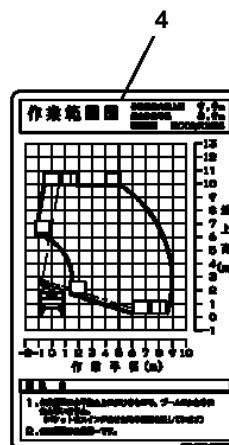
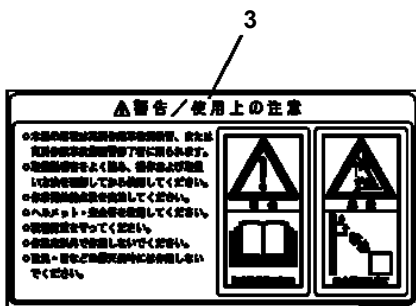


キャブ左後方操作部
 扉を開いた状態

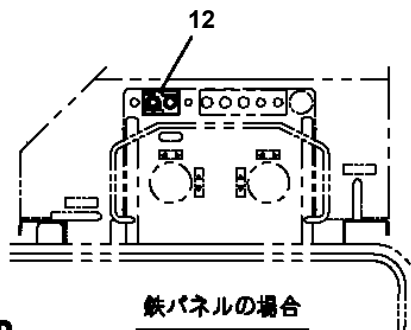
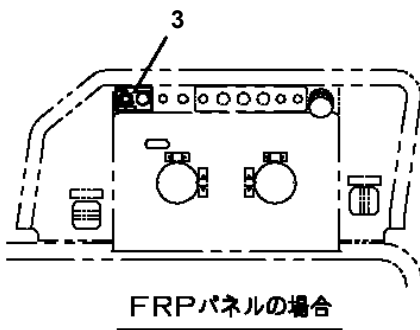
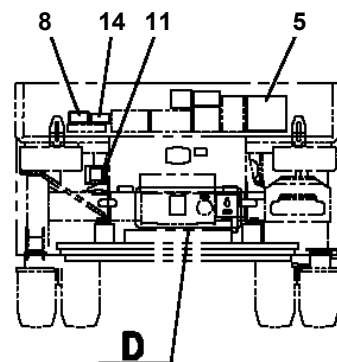
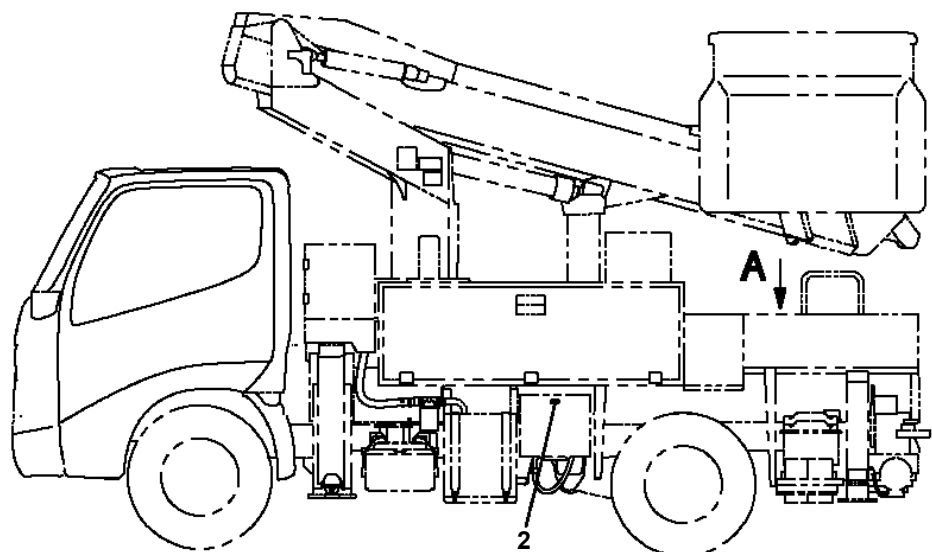
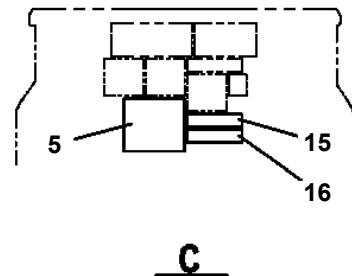
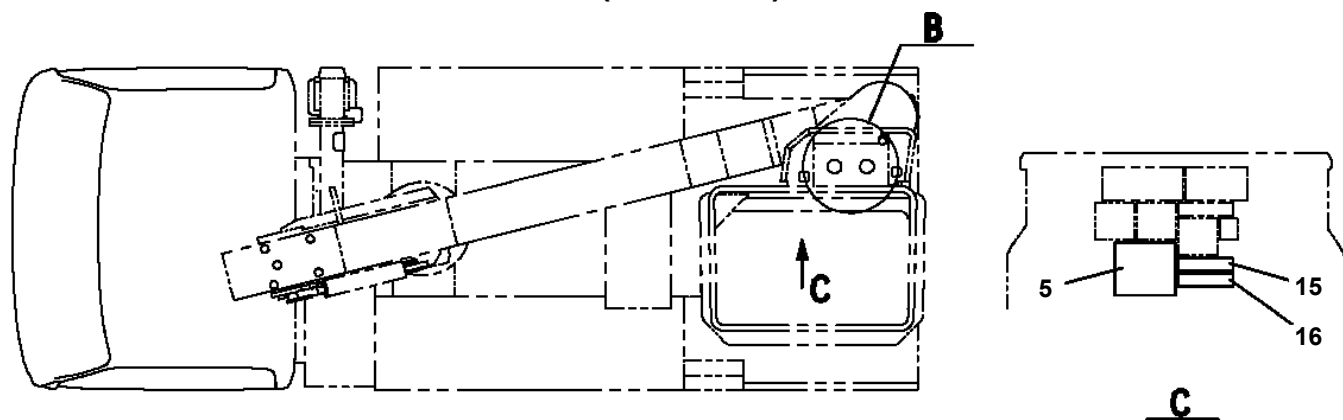


FRONT ←

C



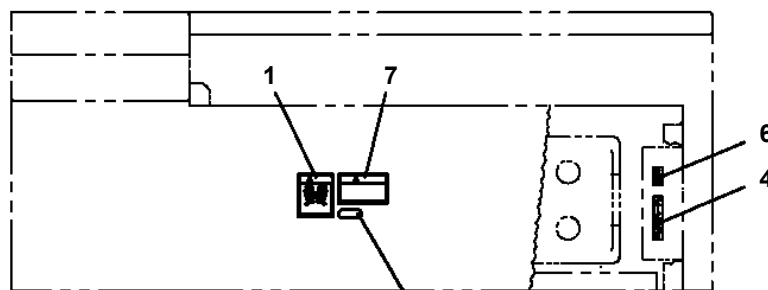
AT-100-5 42063531631 UPPER,LOWER,HINO TKG-XZU600X-TYMMC6
 PN5010783-00 NAME PLATE ASSY (VEHICLE)



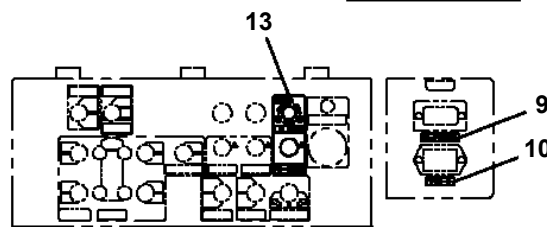
B



扉を閉めた状態



A



扉を開いた状態

D

AT-100-5 42063531631 UPPER,LOWER,HINO TKG-XZU600X-TYMMC6

| Pos No. | Parts No | Parts Name | Qty | Unit | Technical Data | Serial No (Start) | Serial No (End) | Remarks | Pages |
|---------|-------------|------------|-----|------|----------------|-------------------|-----------------|---------|-------|
| 1 | 82444100450 | PLATE,NAME | 1 | | | | | | |

AT-100-5 42063531631 UPPER,LOWER,HINO TKG-XZU600X-TYMMC6

| Pos No. | Parts No | Parts Name | Qty | Unit | Technical Data | Serial No (Start) | S |
|---------|------------------|---|-----|------|----------------|-------------------|---|
| 1 | (***** *****) | NAME PLATE ASSY (VEHICLE) | 1 | | | | |
| 2 | (***** *****) | NAME PLATE ASSY (TADANO,TANK,NON-SLIP,FUSE) | 1 | | | | |
| 3 | (***** *****) | NAME PLATE ASSY (SWING MARK) | 1 | | | | |
| 4 | (***** *****) | NAME PLATE ASSY (OPERATION) | 1 | | | | |
| 5 | (***** *****) | NAME PLATE ASSY (SPECIFICATION) | 1 | | | | |
| 6 | (***** *****) | PLATE ASSY,NAME (OIL/COLD DISTRICT) | 1 | | | | |
| | (***** *****) | PLATE ASSY,NAME (HYDRAULIC OIL) | 1 | | | | |

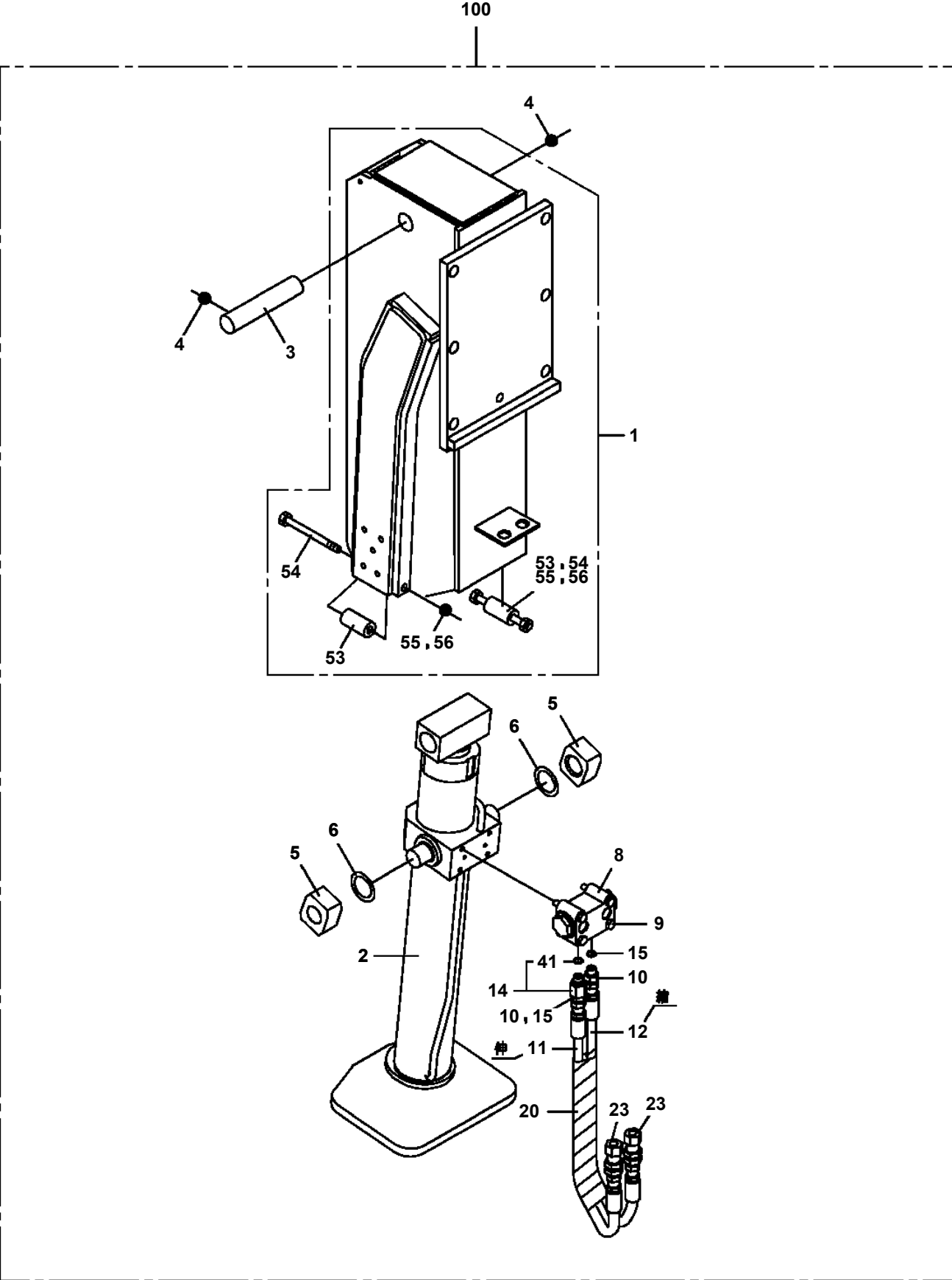
AT-100-5 42063531631 UPPER,LOWER,HINO TKG-XZU600X-TYMMC6

| Pos No. | Parts No | Parts Name | Qty | Unit | Technical Data | Serial No (Start) | Serial No (End) | Remarks | Pages |
|---------|-------------|------------------|-----|------|----------------|-------------------|-----------------|---------|-------|
| 1 | 34393906540 | PLATE (NON-SLIP) | 3 | | | | | | |
| 2 | 42396801100 | PLATE (NON-SLIP) | 2 | | | | | | |
| 3 | 42834921010 | PLATE (NON-SLIP) | 1 | | | | | | |
| 4 | 42396863100 | PLATE (NON-SLIP) | 1 | | | | | | |

AT-100-5 42063531631 UPPER,LOWER,HINO TKG-XZU600X-TYMMC6

| Pos No. | Parts No | Parts Name | Qty | Unit | Technical Data | Serial No (Start) | Serial No (End) |
|---------|----------|---|-----|------|----------------|-------------------|-----------------|
| 1 | (*****) | OPE.ASSY,BUCKET | 2 | | | | |
| 2 | (*****) | NAME PLATE ASSY (BUCKET CONTROL) | 2 | | | | |
| 3 | (*****) | NAME PLATE ASSY (INSIDE BUCKET) | 2 | | | | |
| 4 | (*****) | NAME PLATE ASSY (SAFETY BELT HOOK HOLDER) | 2 | | | | |

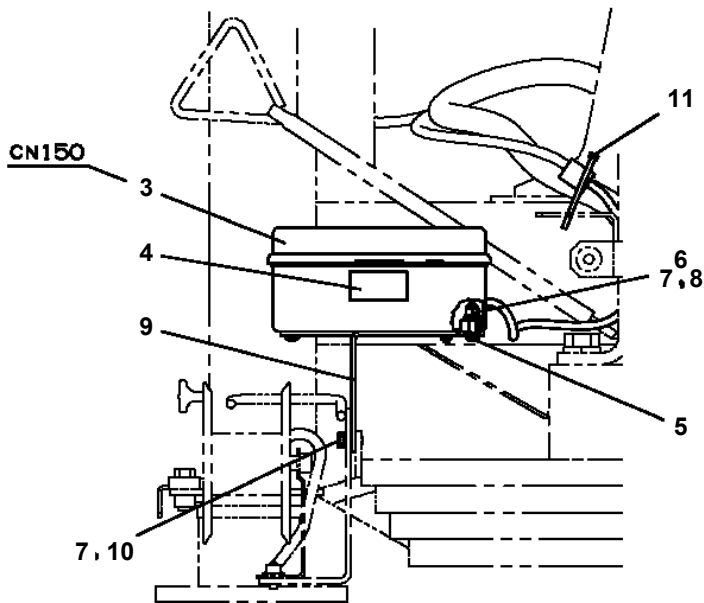
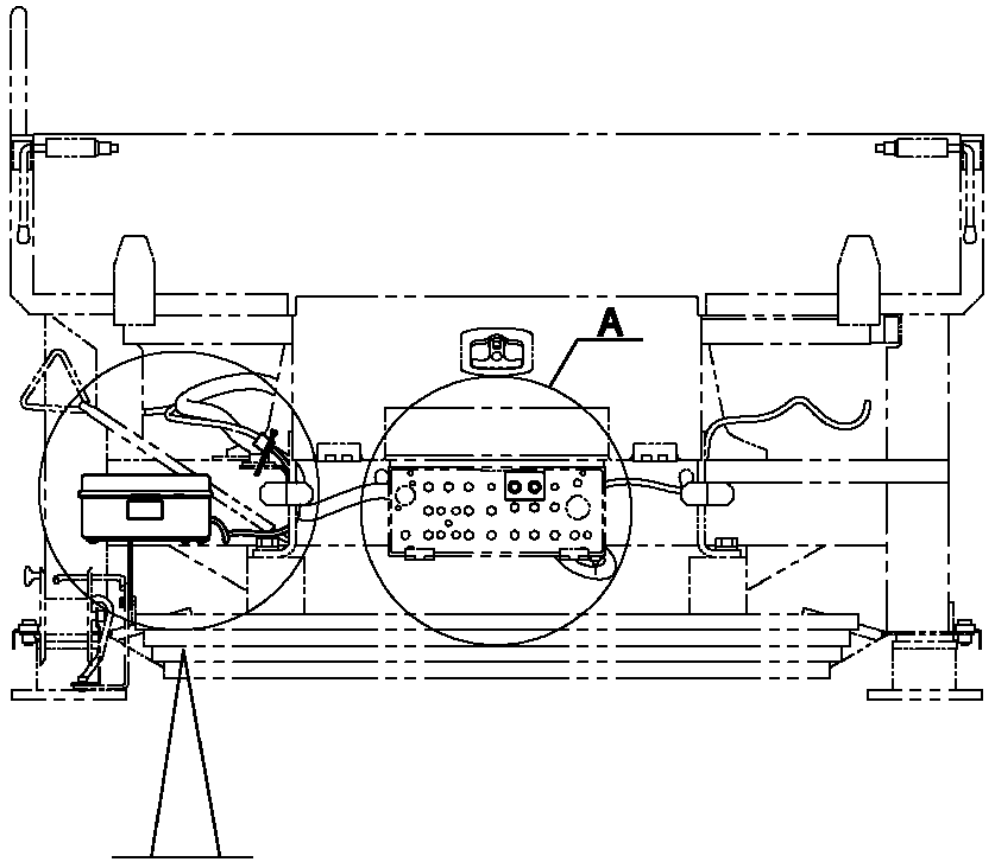
AT-100-5 42063531631 UPPER,LOWER,HINO TKG-XZU600X-TYMMC6
PO5270160-00 OUTRIGGER ASSY



AT-100-5 42063531631 UPPER,LOWER,HINO TKG-XZU600X-TYMMC6

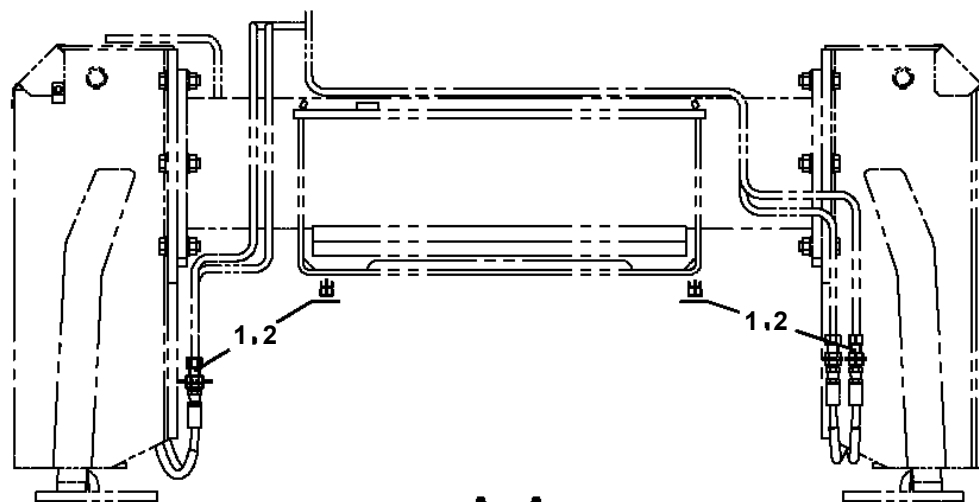
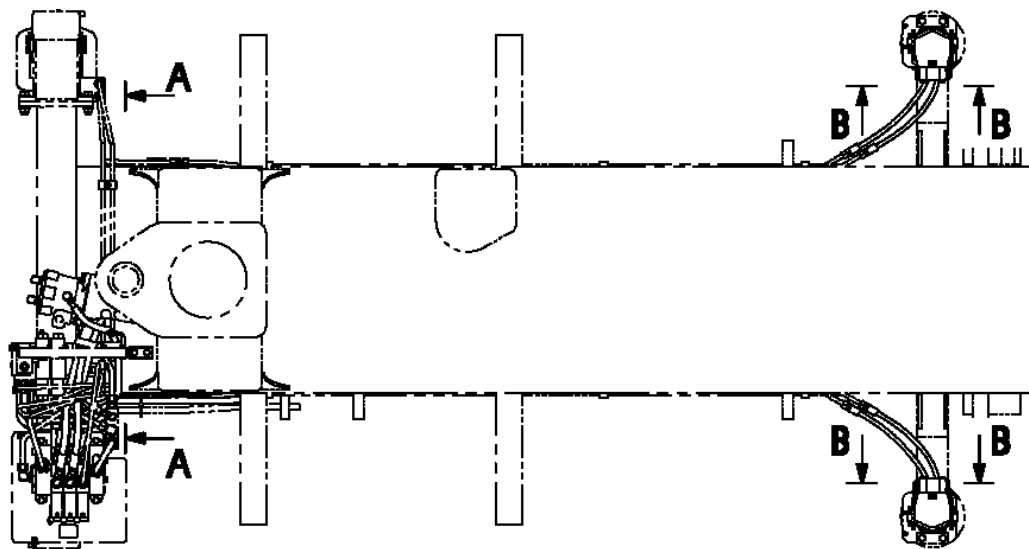
| Pos No. | Parts No | Parts Name | Qty | Unit | Technical Data | Serial No (Start) | Serial No (End) |
|---------|-------------|--------------------------------|-----|------|----------------|-------------------|-----------------|
| 1 | 42508701010 | PLATE,NAME (AC100V,FUSE,15A) | 1 | | | | |
| 2 | 42501481100 | HOLDER ASSY(FUSE,WITH HARNESS) | 2 | | | | |
| 3 | 42654790300 | BOX ASSY | 1 | | | | |
| 4 | 42477640090 | PLATE,NAME (AC100V) | 1 | | | | |
| 5 | 90180208025 | BOLT,BUTTON | 2 | | M8X25 | | |
| 6 | 90240200800 | NUT,CAP | 2 | | M8 | | |
| 7 | 90302040801 | WASHER,SPRING | 6 | | 8 | | |
| 8 | 90303070801 | WASHER,PLAIN | 2 | | 8 | | |
| 9 | 42508701400 | SUPPORT | 1 | | | | |
| 10 | 90101208012 | BOLT | 4 | | M8X12 | | |
| 11 | 91810132530 | FASTENER | 1 | | | | |
| 32 | 82100001348 | FUSE | 2 | | 15A,6.5X30 | | |

AT-100-5 42063531631 UPPER,LOWER,HINO TKG-XZU600X-TYMMC6
PP5340034-00 POWER SUPPLY ASSY,ELECTRICITY (LOWER,3POLES OUTLET)

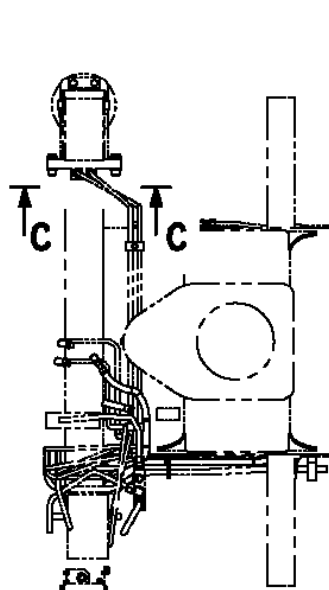


4
AC100V (10A)
取入口

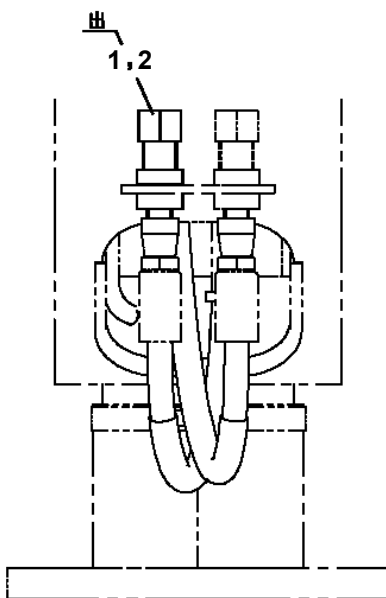
AT-100-5 42063531631 UPPER,LOWER,HINO TKG-XZU600X-TYMMC6
 PP6010236-01 PIPING ASSY



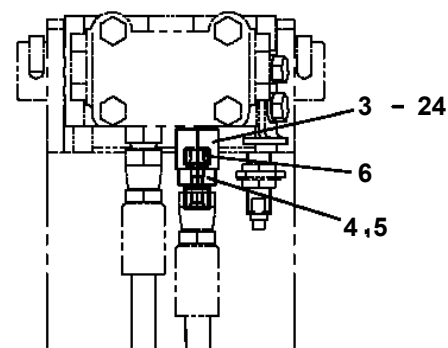
A-A



アウトリガ左右共通使用の場合

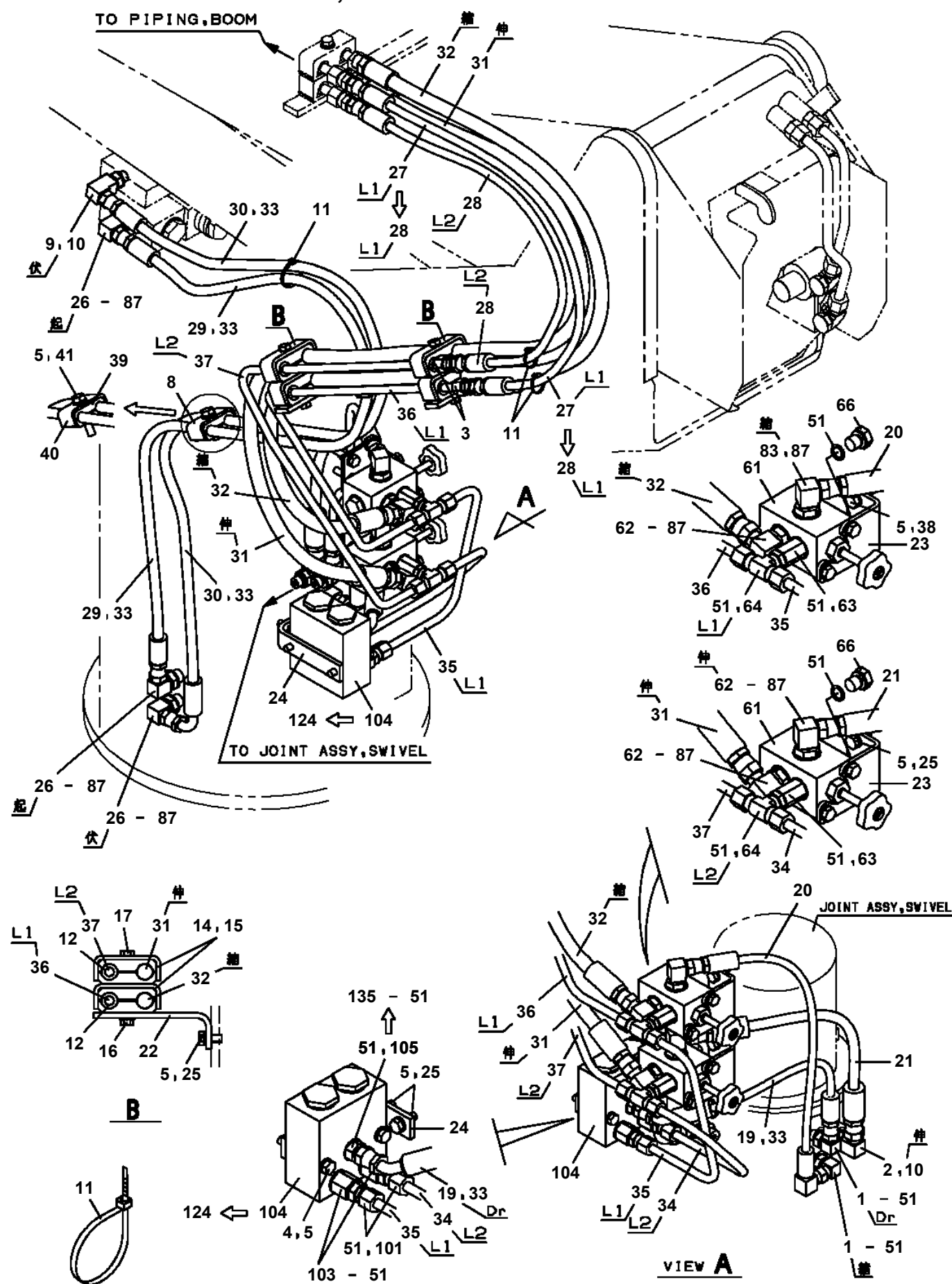


C-C
(2ヶ所)

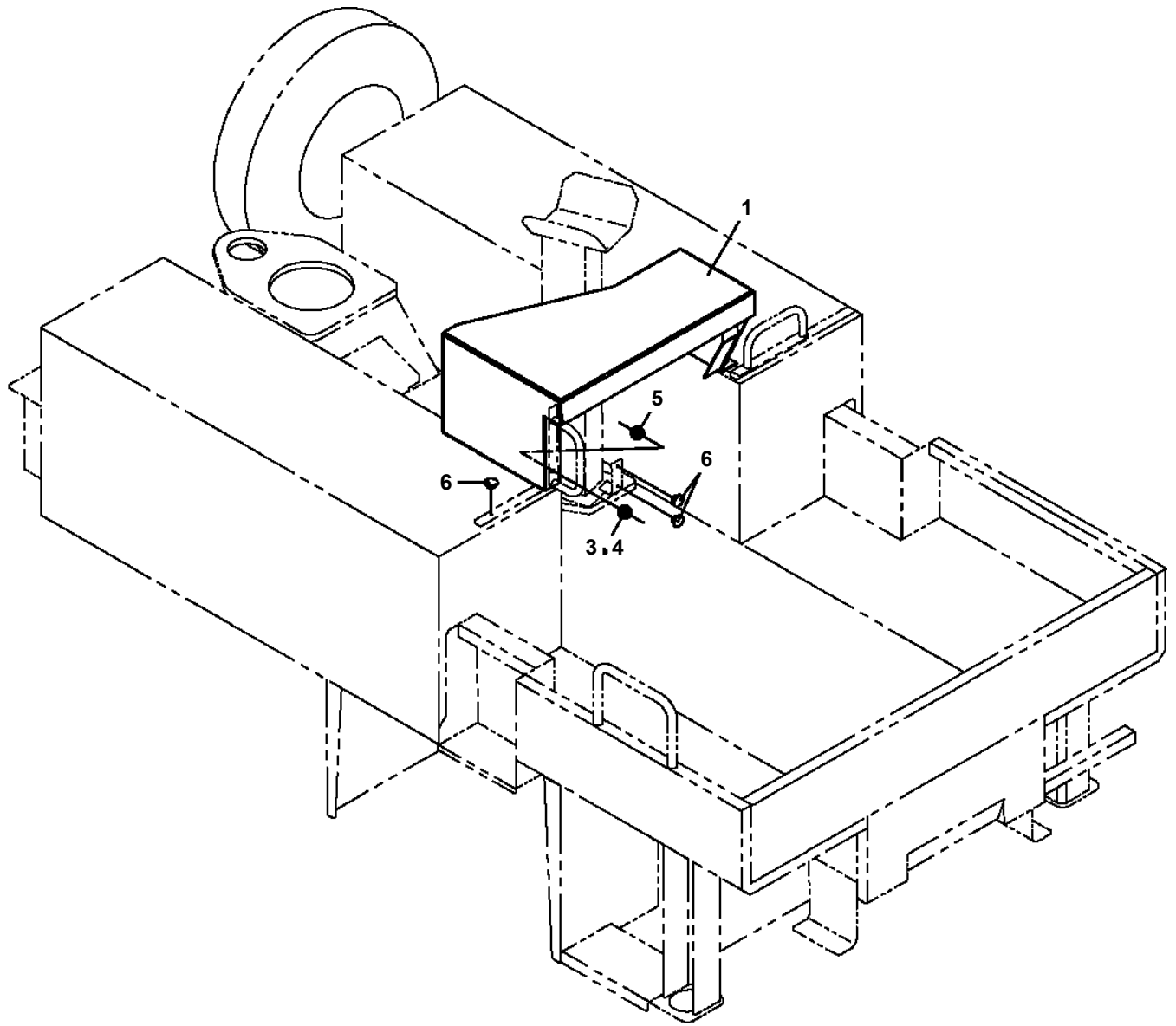


B-B
(2ヶ所)

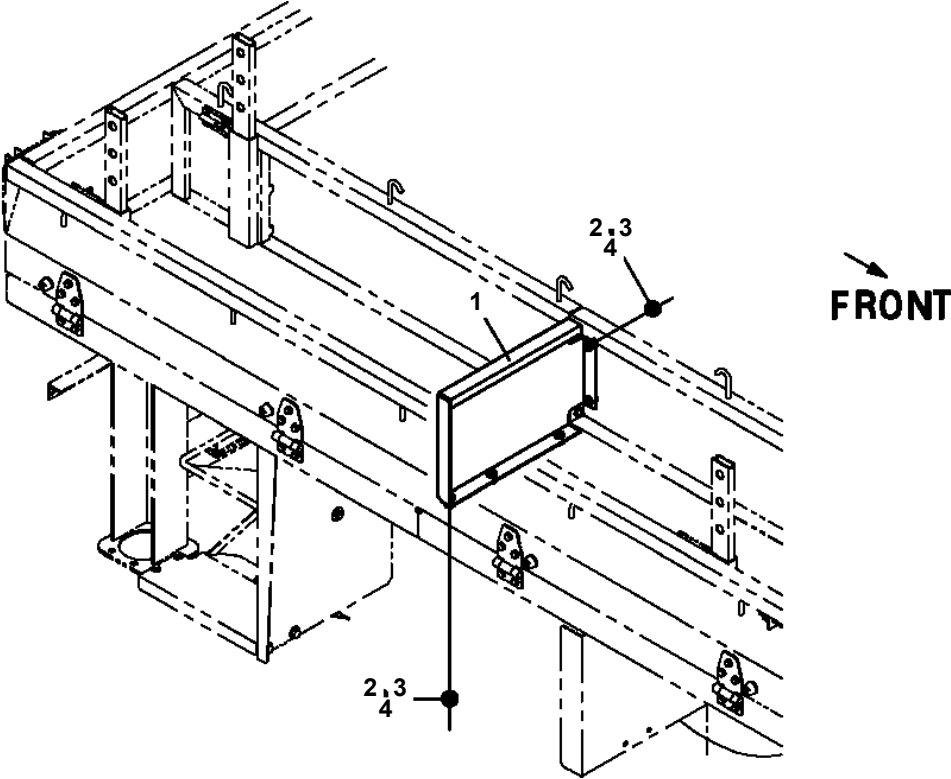
**AT-100-5 42063531631 UPPER,LOWER,HINO TKG-XZU600X-TYMMC6
PP6330005-03 PIPING ASSY,SWING FRAME**



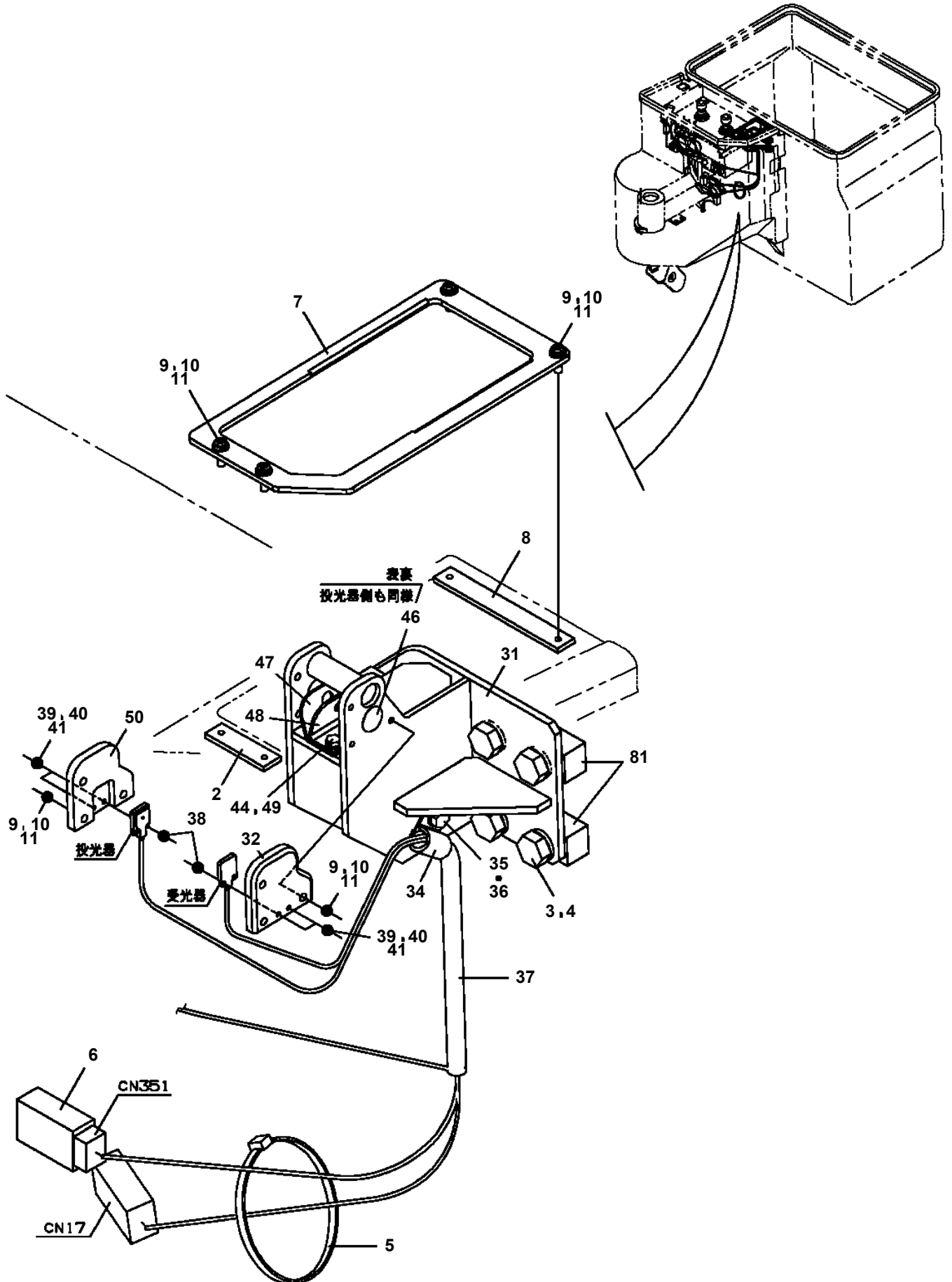
AT-100-5 42063531631 UPPER,LOWER,HINO TKG-XZU600X-TYMMC6
PS5360014-00 STEP ASSY



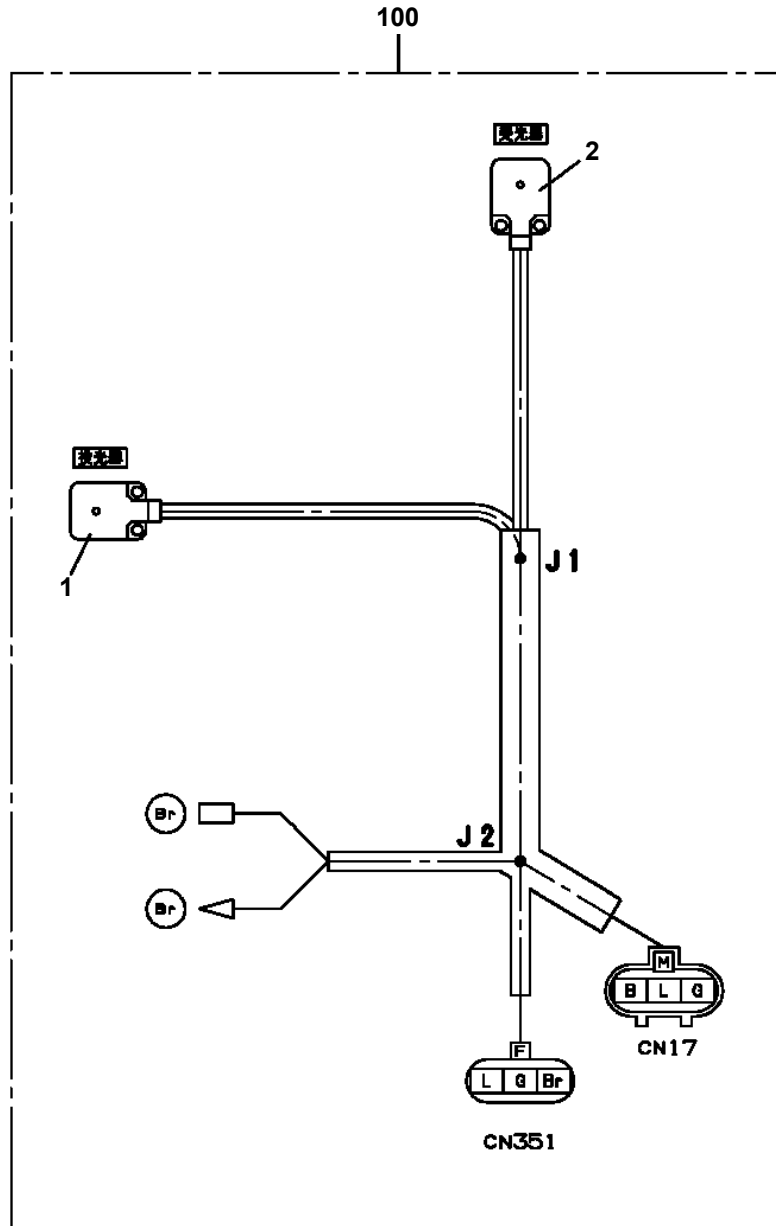
**AT-100-5 42063531631 UPPER,LOWER,HINO TKG-XZU600X-TYMMC6
PS5420395-00 SUPPORT ASSY (MIDDLE PARTITION FOR RIGHT RACK)**



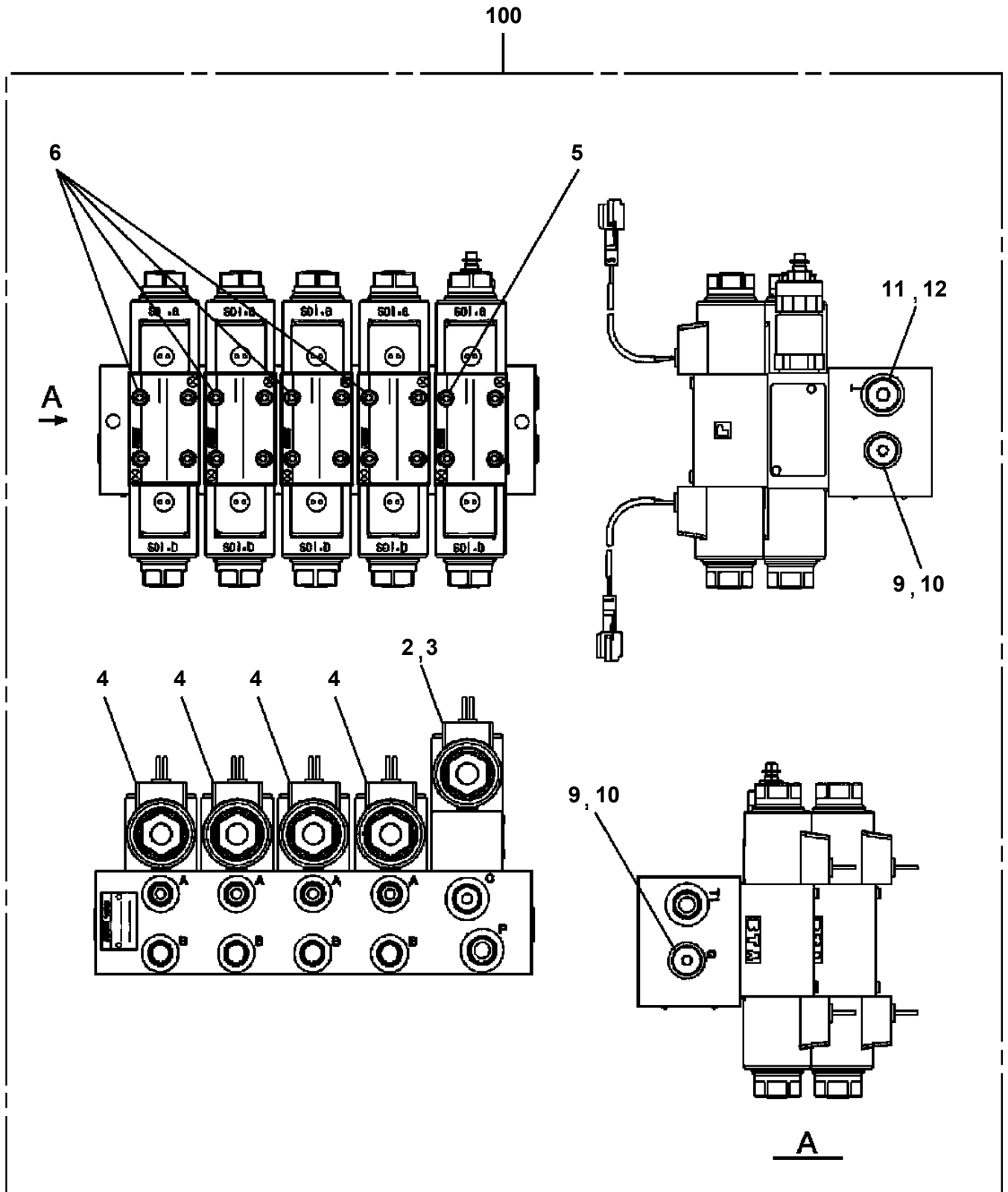
AT-100-5 42063531631 UPPER,LOWER,HINO TKG-XZU600X-TYMMC6
 PS5530168-01 SWITCH ASSY (SAFETY INTERLOCK/WITH ENABLE SW)



AT-100-5 42063531631 UPPER,LOWER,HINO TKG-XZU600X-TYMMC6
PS5530393-00 SWITCH ASSY



AT-100-5 42063531631 UPPER,LOWER,HINO TKG-XZU600X-TYMMC6
PV5010007-00 VALVE ASSY (JACK CONTROL)

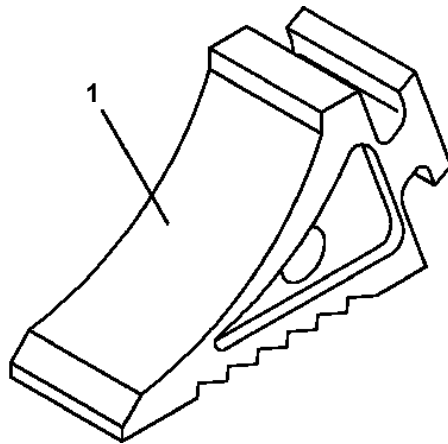


**AT-100-5 42063531631 UPPER,LOWER,HINO TKG-XZU600X-TYMMC6
PW1000118-00 ACCESSORIES & TOOLS**

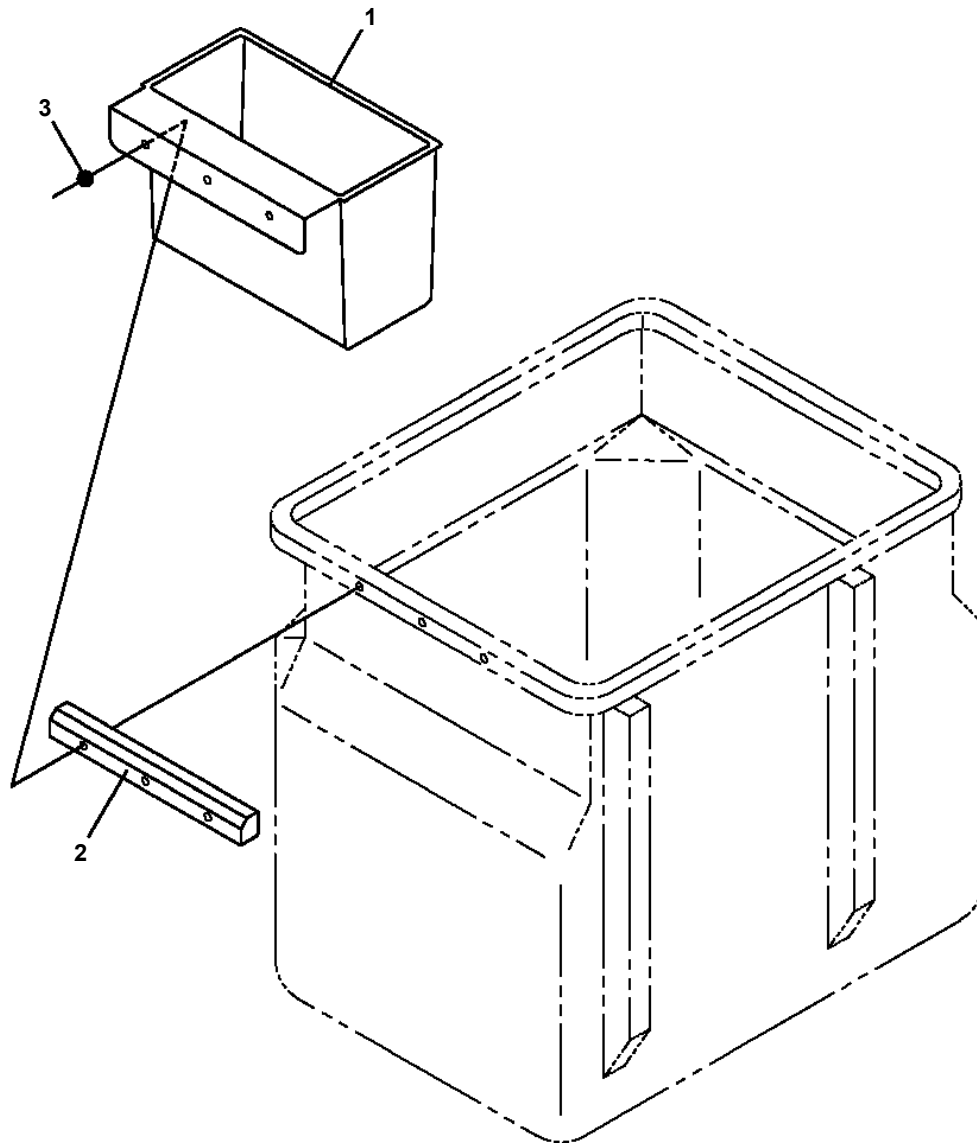
フソク ア ヒン
ACCESSORIES & TOOLS

【組立名称一覧】より選択してください。
SEE THE CORRESPONDING "ASSEMBLY NAME" LIST.

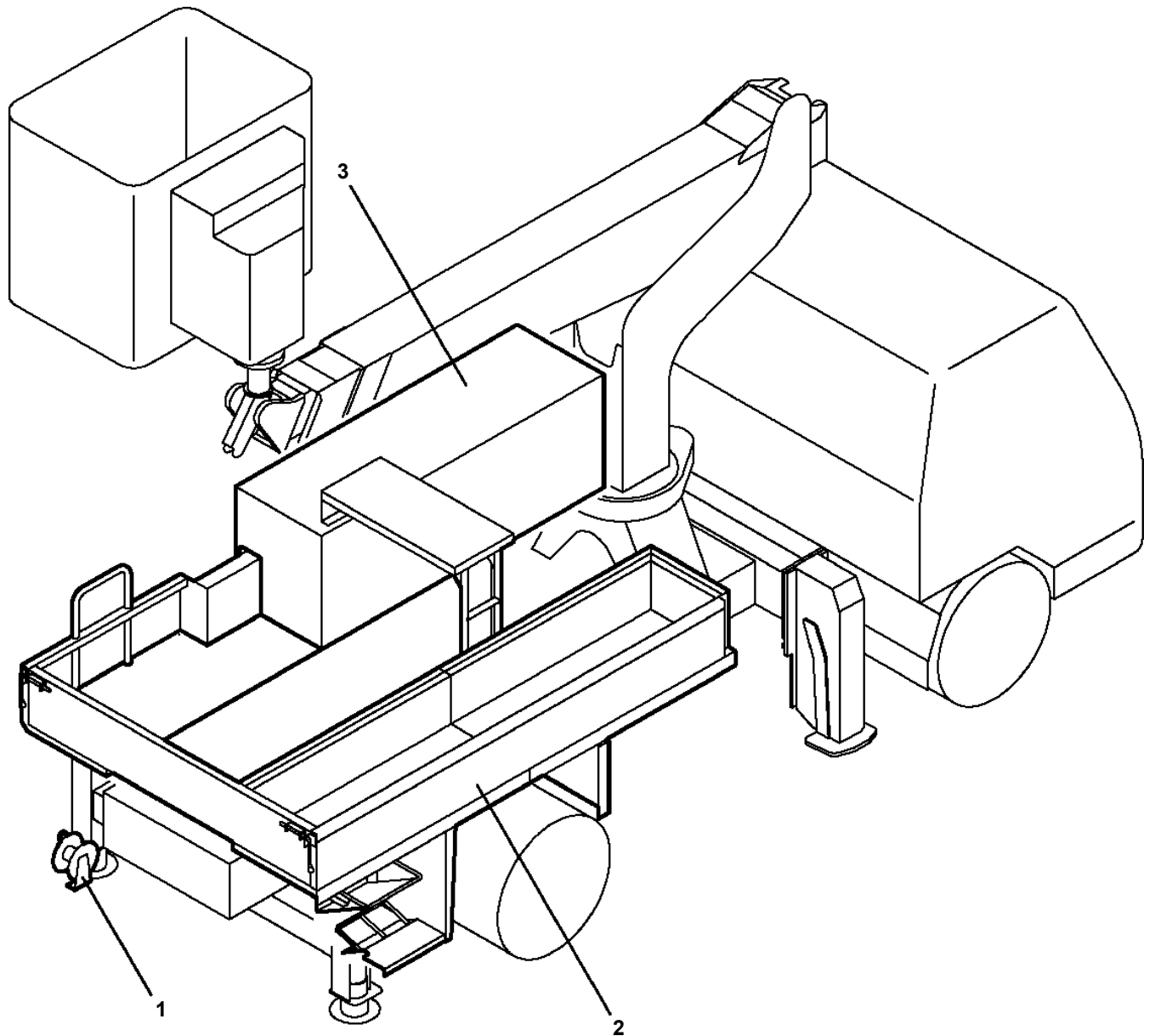
**AT-100-5 42063531631 UPPER,LOWER,HINO TKG-XZU600X-TYMMC6
PW1050018-01 WEDGE (STOPPER FOR TIRE/JUSTIN)**



AT-100-5 42063531631 UPPER,LOWER,HINO TKG-XZU600X-TYMMC6
PX1351247-00 BOX,TOOL (BUCKET)



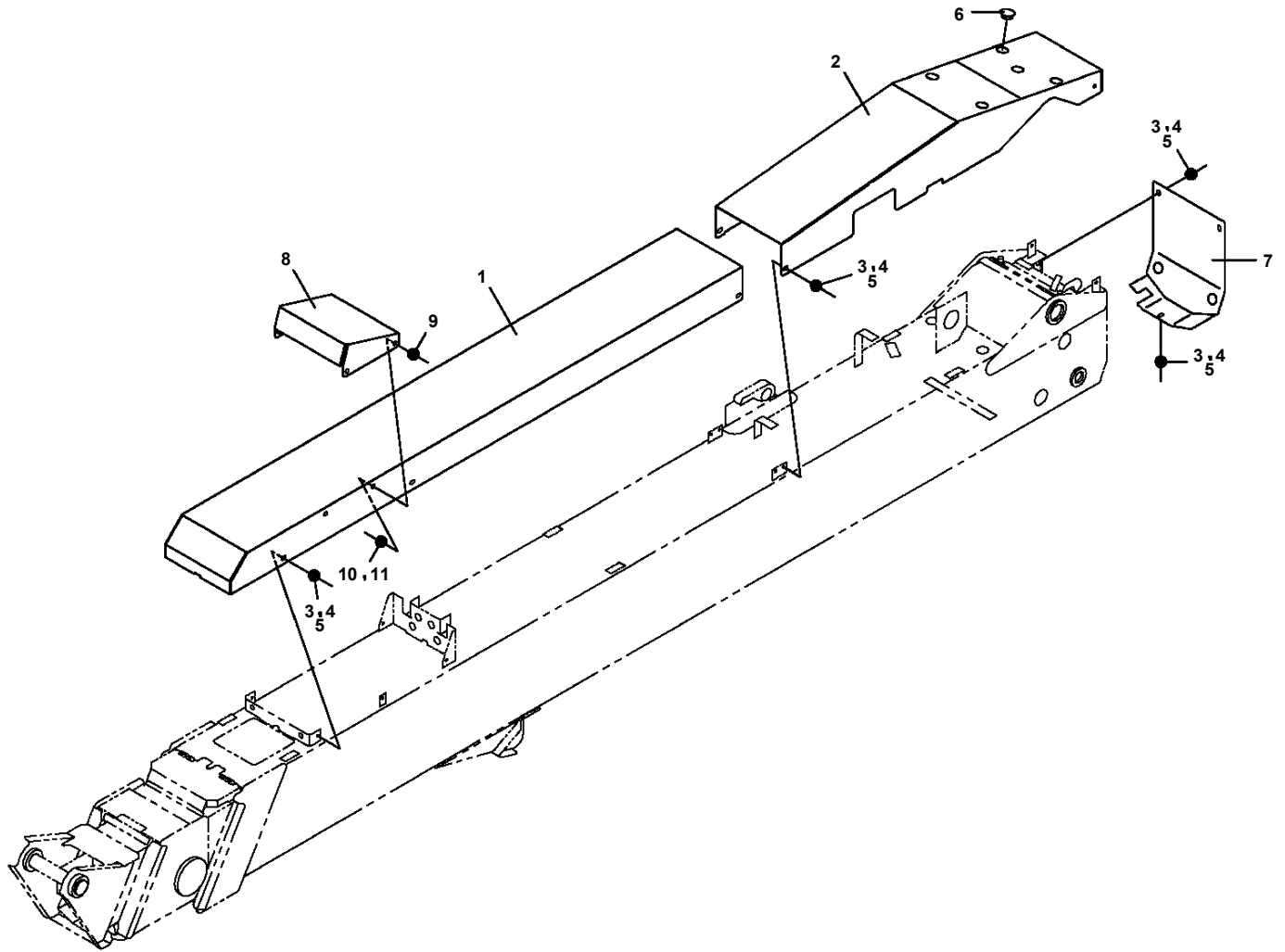
**AT-100-5 42063531631 UPPER,LOWER,HINO TKG-XZU600X-TYMMC6
PX3000876-00 MOUNTING UNIT**



適用製造番号によっては取り付けがないものもあります。

MACHINES OF SOME SERIAL NO. ARE NOT EQUIPPED WITH THESE PARTS.

AT-100-5 42063531631 UPPER,LOWER,HINO TKG-XZU600X-TYMMC6
PX5260010-00 MOUNT ASSY,COVER



AT-100-5 42063531631 UPPER,LOWER,HINO TKG-XZU600X-TYMMC6

| Pos No. | Parts No | Parts Name | Qty | Unit | Technical Data | Serial No (Start) | Serial No (End) | Remarks | Pag |
|---------|-------------|---------------|-----|------|----------------|-------------------|-----------------|---------|-----|
| 62 | 37000505950 | PLATE | 4 | | T=3.2 | | | | |
| 63 | 82400000345 | CHAIN (QTY=L) | 1 | M | | | HK1686 | | |
| | 82400000575 | CHAIN | 1 | M | | HK1687 | | | |
| 64 | 90186206016 | BOLT,FLANGE | 1 | | M6X16 | | HK1184 | | |
| | 90186206010 | BOLT,FLANGE | 1 | | M6X10 | HK1185 | | | |
| 65 | 37000537610 | PLATE | 1 | | | | | | |
| 81 | 42990281100 | SUPPORT | 1 | | | | | | |
| 82 | 42697992200 | LEVER | 1 | | | | | | |
| 83 | 90303521201 | WASHER,PLAIN | 6 | | 12 | | | | |
| 84 | 90201501200 | NUT | 6 | | M12 | | | | |
| 85 | 42697992300 | LEVER | 2 | | | | | | |
| 86 | 82466003106 | CAP | 3 | | | | | | |
| 91 | 42990651101 | SUPPORT | 1 | | | | | | |

AT-100-5 42063531631 UPPER,LOWER,HINO TKG-XZU600X-TYMMC6

| Pos No. | Parts No | Parts Name | Qty | Unit | Technical Data | Serial No (Start) | Serial No (End) | Remarks | Pages |
|---------|-------------|------------------|-----|------|----------------|-------------------|-----------------|---------|-------|
| 1 | 42393891060 | PLATE (NON-SLIP) | 1 | | | | | | |
| 2 | 42510430100 | SUPPORT | 1 | | | | | | |
| 3 | 90101210018 | BOLT | 2 | | M10X18 | | | | |
| 4 | 90302041001 | WASHER,SPRING | 2 | | 10 | | | | |

AT-100-5 42063531631 UPPER,LOWER,HINO TKG-XZU600X-TYMMC6

| Pos No. | Parts No | Parts Name | Qty | Unit | Technical Data | Serial No (Start) | Serial No (End) | Remarks | Pages |
|---------|-------------|---------------|-----|------|----------------|-------------------|-----------------|---------|--------|
| 1 | 42971121002 | BOX,TOOL | 1 | | | | HK1096 | | 000306 |
| | 42972891000 | BOX,TOOL | 1 | | | HK1097 | | | 000032 |
| 2 | 42971120011 | PLATE | 1 | | | | HK1096 | | |
| | 42972890010 | PLATE | 1 | | | HK1097 | | | |
| 3 | 90101208014 | BOLT | 2 | | M8X14 | | | | |
| 4 | 90302040801 | WASHER,SPRING | 2 | | 8 | | | | |
| 5 | 90303070801 | WASHER,PLAIN | 2 | | 8 | | HK1096 | | |
| | 37000553000 | PLATE | 2 | | | HK1097 | | | |

AT-100-5 42063531631 UPPER,LOWER,HINO TKG-XZU600X-TYMMC6

| Pos No. | Parts No | Parts Name | Qty | Unit | Technical Data | Serial No (Start) | Serial No (End) |
|---------|-------------|------------------------------|-----|------|----------------|-------------------|-----------------|
| 1 | 42470330000 | ROPE (SAFETY,YELLOW:TD-TYPE) | 1 | | | | |

AT-100-5 42063531631 UPPER,LOWER,HINO TKG-XZU600X-TYMMC6

| Pos No. | Parts No | Parts Name | Qty | Unit | Technical Data | Serial No (Start) | Serial No (End) | Rem |
|---------|-------------|-------------------------|-----|------|----------------|-------------------|-----------------|-----|
| 1 | 42474440300 | BLOCK,RUBBER (NAKAMURA) | 1 | | | | | |

AT-100-5 42063531631 UPPER,LOWER,HINO TKG-XZU600X-TYMMC6
 PY4000009-11 UPPER OPTIONS,1

AT-110TTE用

40

コントロールアッシー,アウトリガ (ジャック水平トクスイヘイ)
 CONTROL ASSY,OUTRIGGER (JACK HORIZONTAL)

| キー番号 KEY NO. | 部品名 PART NAME | 備考 REMARK |
|-----------------|--------------------------------|--------------|
| 1 | ハイゼンアッシー ELEC.ASSY | * |
| 4 | パイプアッシー PIPING ASSY | クランプ増設追加 |
| 7 | ネームプレートアッシー NAME PLATE ASSY | * |

AT-110TTE用

41

コントロールアッシー,アウトリガ (ジャック水平トクスイヘイ+グレイデンタル)
 CONTROL ASSY,OUTRIGGER (JACK HORIZONTAL+GRADIENT WARNING)

| キー番号 KEY NO. | 部品名 PART NAME | 備考 REMARK |
|-----------------|--------------------------------|--------------|
| 1 | ハイゼンアッシー ELEC.ASSY | * |
| 4 | パイプアッシー PIPING ASSY | クランプ増設追加 |
| 7 | ネームプレートアッシー NAME PLATE ASSY | 省略 |

NTT西園向け

44

パワーサプライアッシー,電力 (100V) (100V電源用)
 POWER SUPPLY ASSY,ELECTRICITY

| NO. | 部品名/PART NAME | 備考/REMARK |
|-----|---|---------------------|
| 1 | ランプアッシー,ワーキング LAMP ASSY,WORKING | 100V電源用 (100V電源用) |
| 2 | パワーサプライアッシー,電力 POWER SUPPLY ASSY,ELECTRICITY | 7W (100V -0) |
| 3 | パワーサプライアッシー,電力 POWER SUPPLY ASSY,ELECTRICITY | 7W (電源:3W電源用, 7-スロ) |
| 4 | モディフィケーション部品 MODIFICATION PARTS | 省略 |

適用製造番号によっては取り付けがないものもあります。

MACHINES OF SOME SERIAL NO. ARE NOT EQUIPPED WITH THESE PARTS.

CLICK HERE TO **DOWNLOAD** THE COMPLETE MANUAL

- Thank you very much for reading the preview of the manual.
- You can download the complete manual from: www.heydownloads.com by clicking the link below



- Please note: If there is no response to CLICKING the link, please download this PDF first and then click on it.

CLICK HERE TO **DOWNLOAD** THE COMPLETE MANUAL