

## **AT-100-2 42063200013 UPPER**

PD2000125-00 SWING UNIT

PG2000143-00 BOOM UNIT

PH1000355-00 SAFETY DEVICES

PJ3000385-00 BUCKET SYSTEM

PK2000610-00 FRAME UNIT

PO1000149-00 INDICATION PLATES

PW1000041-00 ACCESSORIES & TOOLS

PY1000936-01 OPTIONS,1

PY2000128-00 OPTIONS,2

ASSEMBLY

CLICK HERE TO **DOWNLOAD** THE COMPLETE MANUAL

- Thank you very much for reading the preview of the manual.
- You can download the complete manual from: [www.heydownloads.com](http://www.heydownloads.com) by clicking the link below



- Please note: If there is no response to CLICKING the link, please download this PDF first and then click on it.

CLICK HERE TO **DOWNLOAD** THE COMPLETE MANUAL

# AT-100-2 42063200013 UPPER

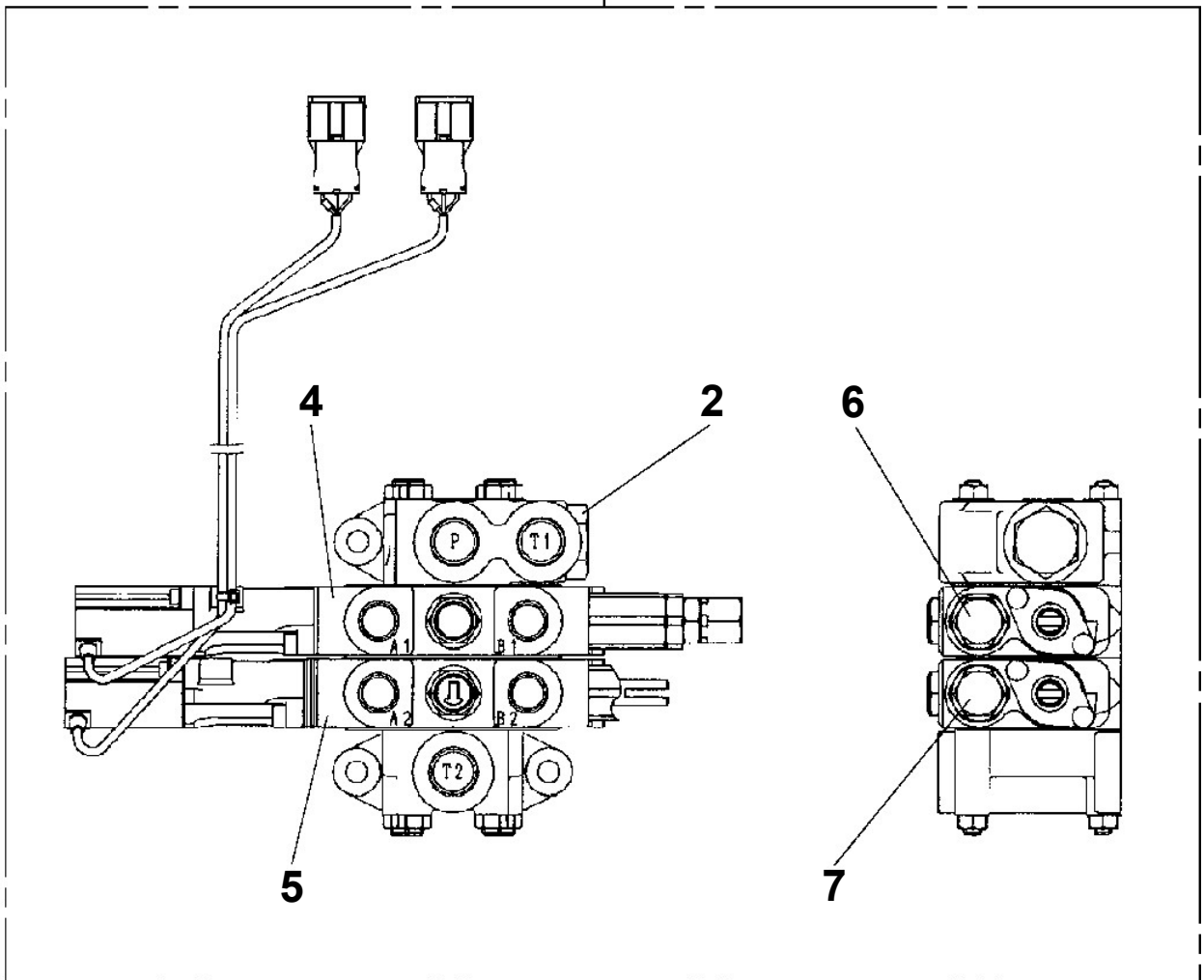
Pos No.	Parts No	Parts Name	Qty	Unit	Technical Data	Serial No (Start)	Serial No (End)	Remarks
1	(*****)	FRAME	1					
2	(*****)	OUTRIGGER	1					
3	(*****)	OPE.ASSY,CONT.VALVE	1					
4	(*****)	PIPING,OUTRIGGER	1					
5	(*****)	ELEC.ASSY (FRAME)	1					
6	(*****)	BOOM REST INSTALLATION	1					
7	(*****)	TANK SUPPORT	1					

## AT-100-2 42063200013 UPPER

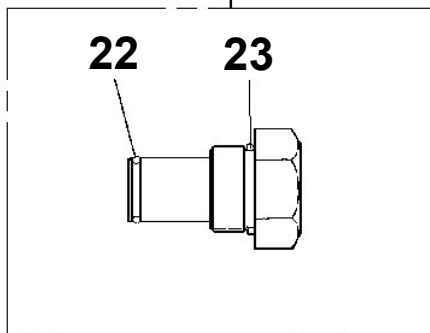
PK1100310-00 SWING FRAME  
PK1200349-00 COVER,SWING FRAME  
PK1330139-00 COVER (BOOM)  
PK1330275-01 COVER (FOR WINCH/WHITE)  
PL1010823-00 OPE.ASSY,CONT.VALVE  
PL1011206-01 OPE.ASSY,CONT.VALVE (2-BLOCK VALVE)  
PL1020045-00 LEVER,CONTROL  
PM5230001-01 MOTOR,OIL  
PN1012439-03 ELEC.ASSY (BOOM)  
PN1012443-00 ELEC.ASSY (SWING FRAME)  
PN1012444-02 ELEC.ASSY (FRAME)  
PN1012497-00 ELEC.ASSY (WINCH)  
PN1012500-01 ELEC.ASSY (INTERLOCK)  
PN1012501-03 ELEC.ASSY  
PN1012502-02 ELEC.ASSY  
PN1012503-02 ELEC.ASSY  
PN1012637-00 ELEC.ASSY (KANDENKO)  
PN1060105-03 SWITCH PANEL  
PN1110259-02 RELAY ASSY  
PN1110260-02 RELAY ASSY (KANDENKO)  
PN1110261-00 RELAY ASSY  
PN1110273-00 RELAY  
PN1140164-00 SWITCH ASSY (WITH HARNESS,3 SW)  
PN1140165-00 SWITCH ASSY  
PN1180026-01 CONTROLLER  
PN1210121-00 TRANSMITTER,SIGNAL  
PN1210122-00 TRANSMITTER,SIGNAL  
PN1450048-00 HARNESS  
PO1013115-01 PLATE ASSY,NAME (BUCKET,1-LEVER 2-CONT.)  
PO1013121-01 PLATE ASSY,NAME (HYDRAULIC OIL)  
PO1013127-01 PLATE ASSY,NAME (EMERGENCY CONT.)  
PO1013171-02 PLATE ASSY,NAME (WINCH)  
PO1013742-00 PLATE ASSY,NAME  
PO1013743-00 PLATE ASSY,NAME  
PO1050062-00 MARKING  
PP5390001-00 PRUNER ASSY  
PP5450004-00 PUMP,GREASE (400CC)  
PS5150001-00 SHACKLE  
PS5530450-00 SWITCH ASSY  
PV1020242-03 VALVE,REMOTE CONTROL  
PW1010248-00 ACCESSORIES  
PW1030049-01 TOOLS  
PW1050018-01 WEDGE (STOPPER FOR TIRE/JUSTIN)  
PW5110002-00 WEDGE (STOPPER FOR TIRE/WAZUMI)  
PW5110003-00 WEDGE (STOPPER FOR TIRE/NAKAMURA KIKI)  
PX1100239-01 TANK SUPPORT  
PX1120382-01 BOOM REST INSTALLATION  
PY1070000-00 ROPE (SAFETY,YELLOW:TD-TYPE)  
PY1070001-00 ROPE (SAFETY,1.5M,WITH HOOK)  
PY1070003-00 ROPE (SAFETY,WHITE)  
PY1090001-00 BELT,SAFETY  
PY1180281-01 LAMP (WORKING)  
PY1180282-03 LAMP (LOWER CONTROL PANEL)  
PY1180287-00 LAMP (TOOL BOX)  
PY1250021-03 SWITCH INSTALLATION (LOWER PRIORITY SW)  
PY1460014-01 ELECTRICAL PARTS,POWER SUPPLY(100V)  
PY1460015-01 ELECTRICAL PARTS,POWER SUPPLY(100V)  
PY1560014-01 ALARM SYSTEM (JACK)  
PY1640000-01 DRIL,HYDRAULIC  
PY1680000-02 WRENCH,IMPACT (HYDRAULIC)  
PY1760001-00 STEP,BUCKET  
PY1760003-00 STEP,BUCKET (GRAY,FOR BUCKET INNER)  
PY1790001-00 HANGER (FOR BUCKET)  
PY1790004-01 HANGER (FOR BUCKET,FRP)

**AT-100-2 42063200013 UPPER  
PB1320538-01 VALVE,MANUAL CONTROL**

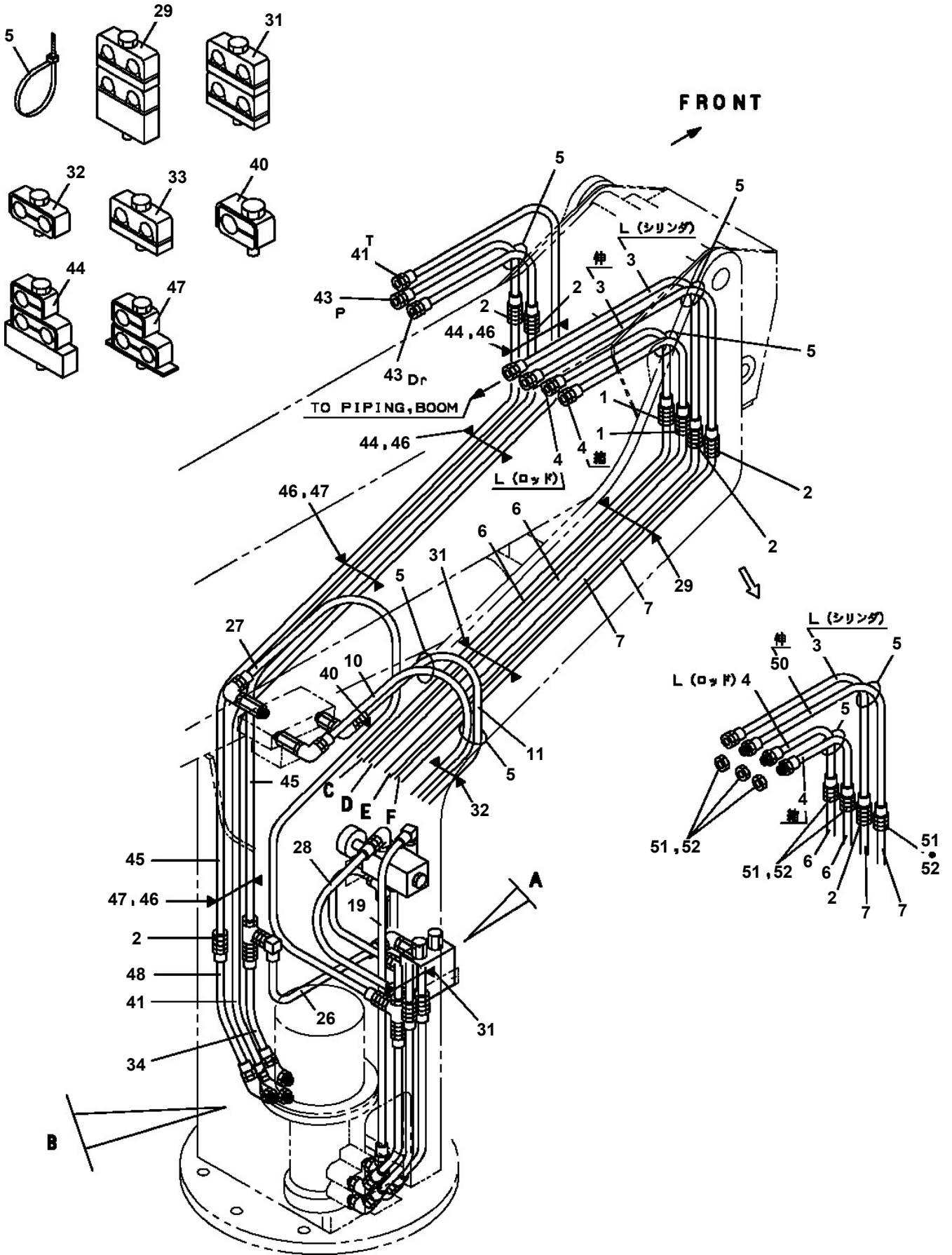
**200**



**2**

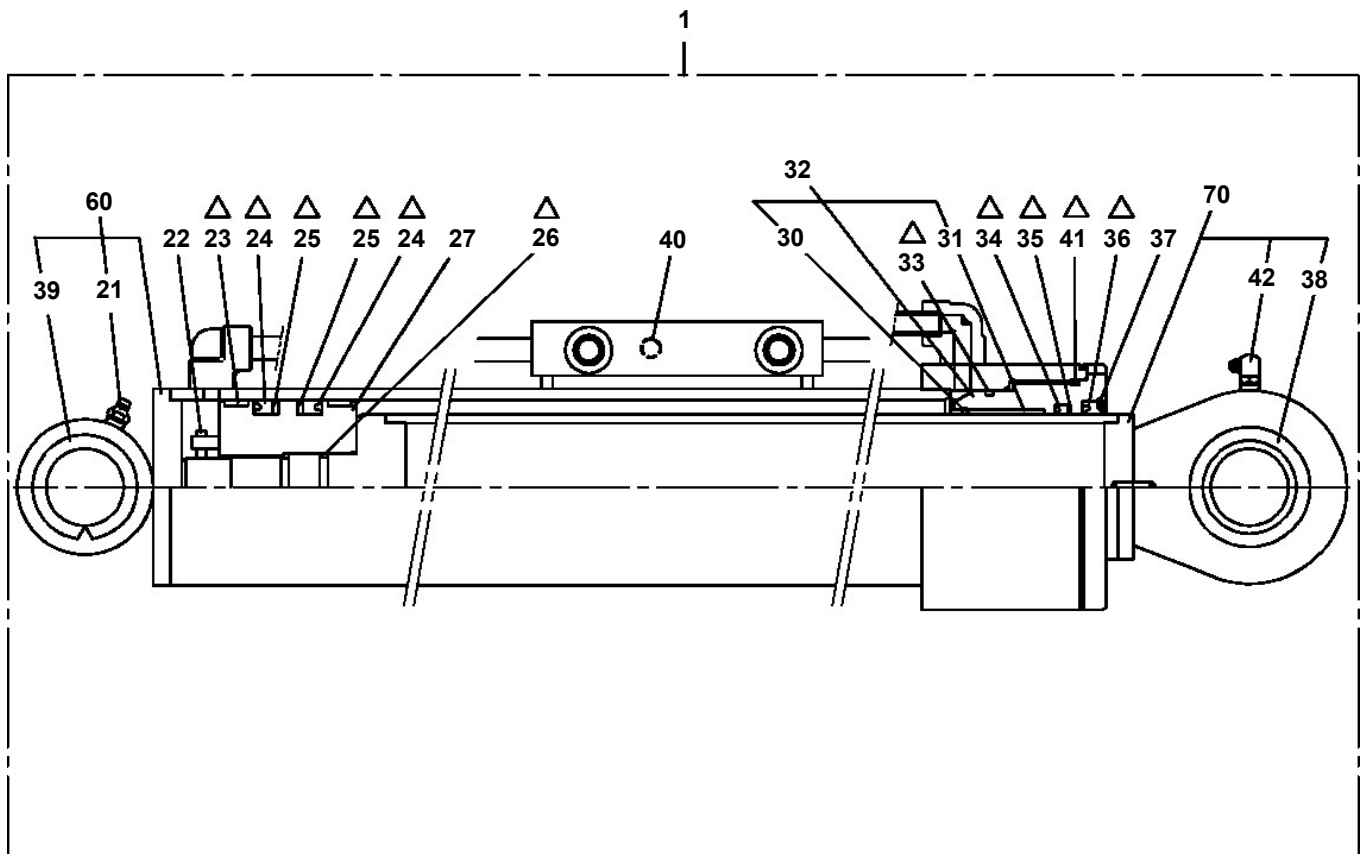
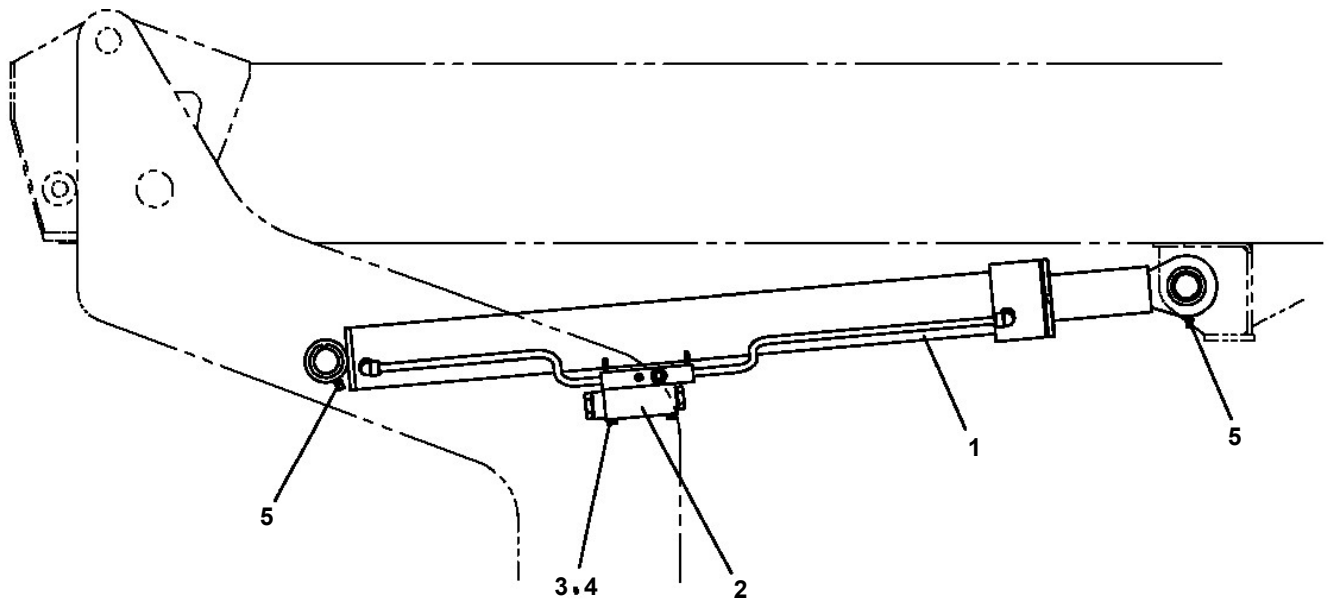


**AT-100-2 42063200013 UPPER  
PB1400310-02 PIPING,UPPER**





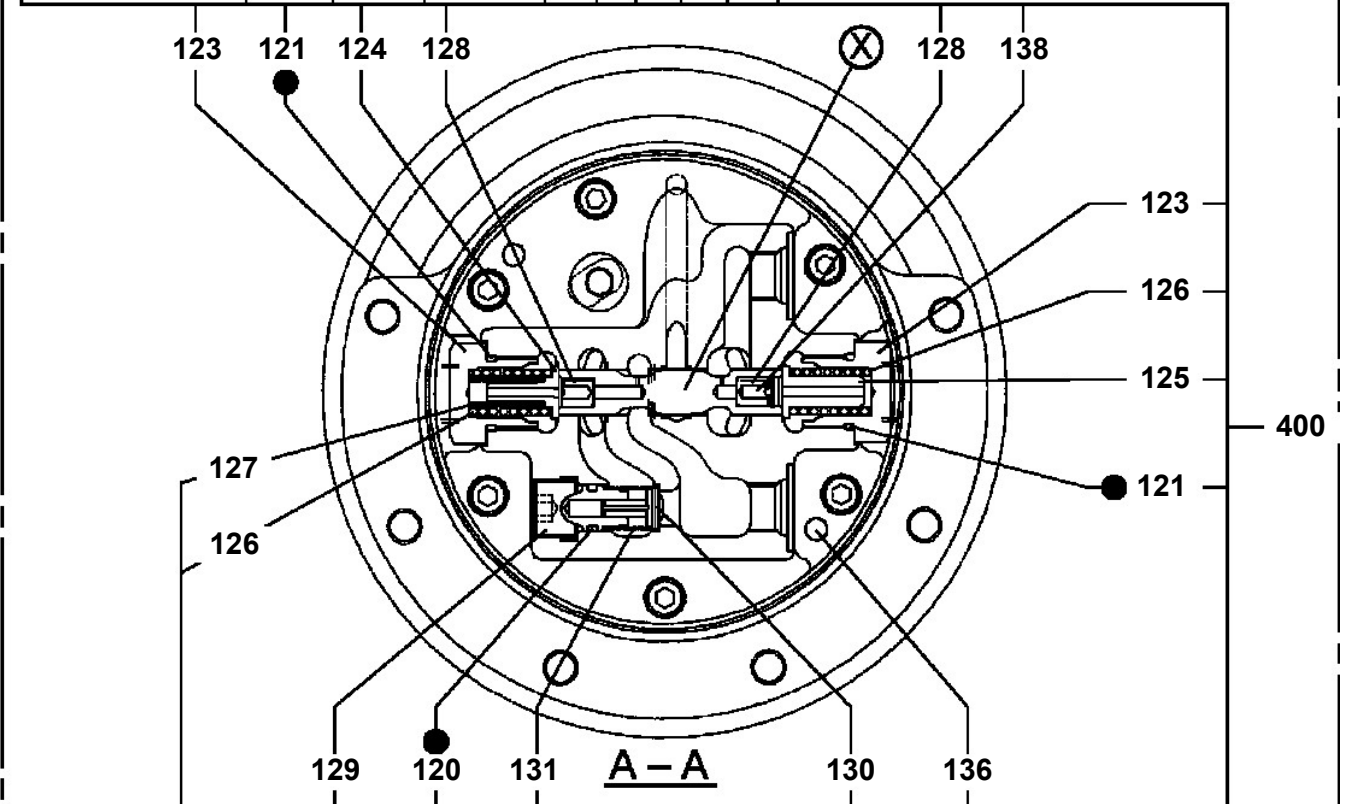
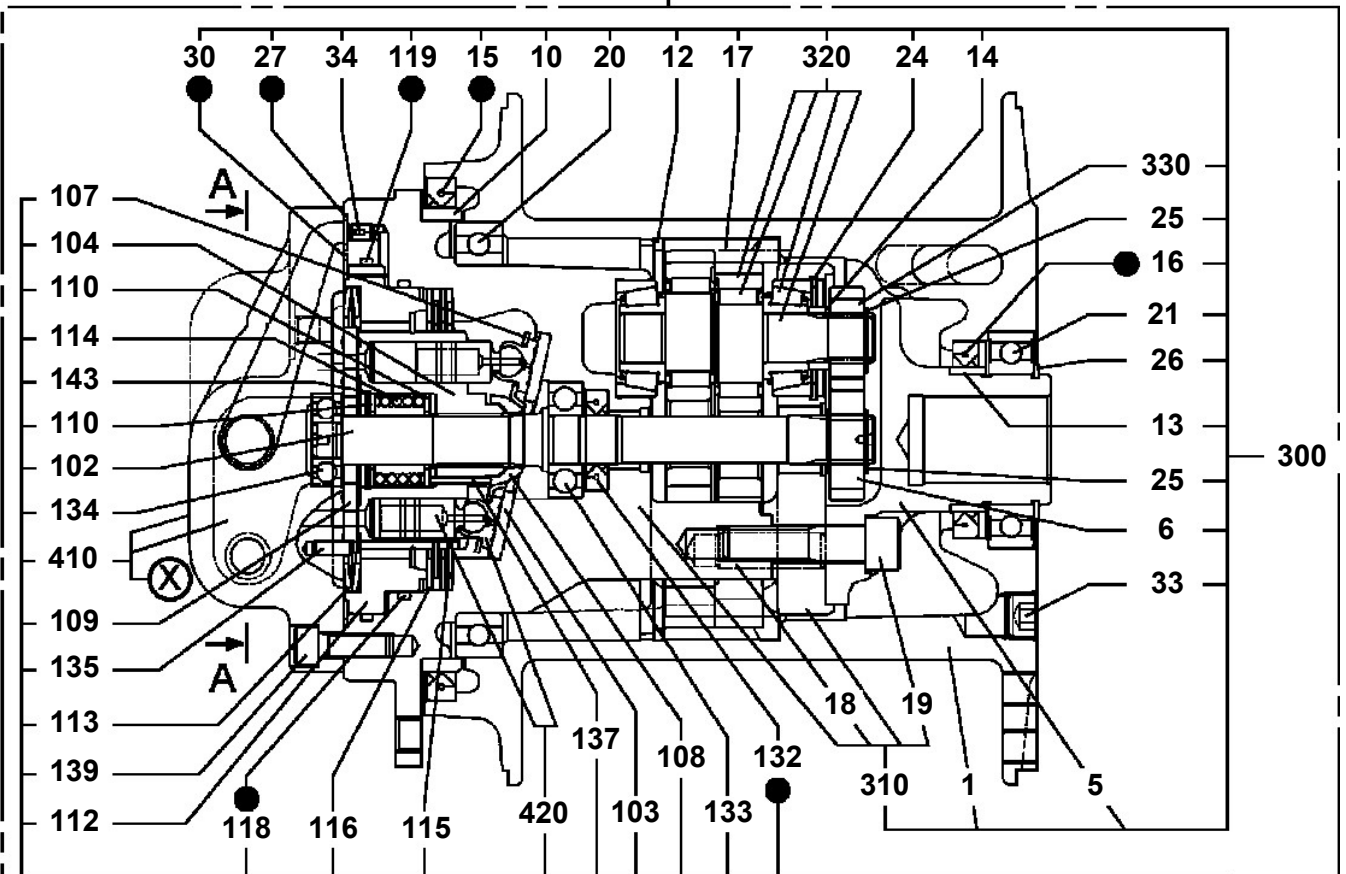
**AT-100-2 42063200013 UPPER  
PE1010368-01 CYLINDER,ELEVATING**



Δ: PACKING SET KEY NO. 80 (KEY NO. 23, 24, 25, 26, 33, 34, 35, 36, 41)

AT-100-2 42063200013 UPPER  
PF1010392-01 WINCH

500



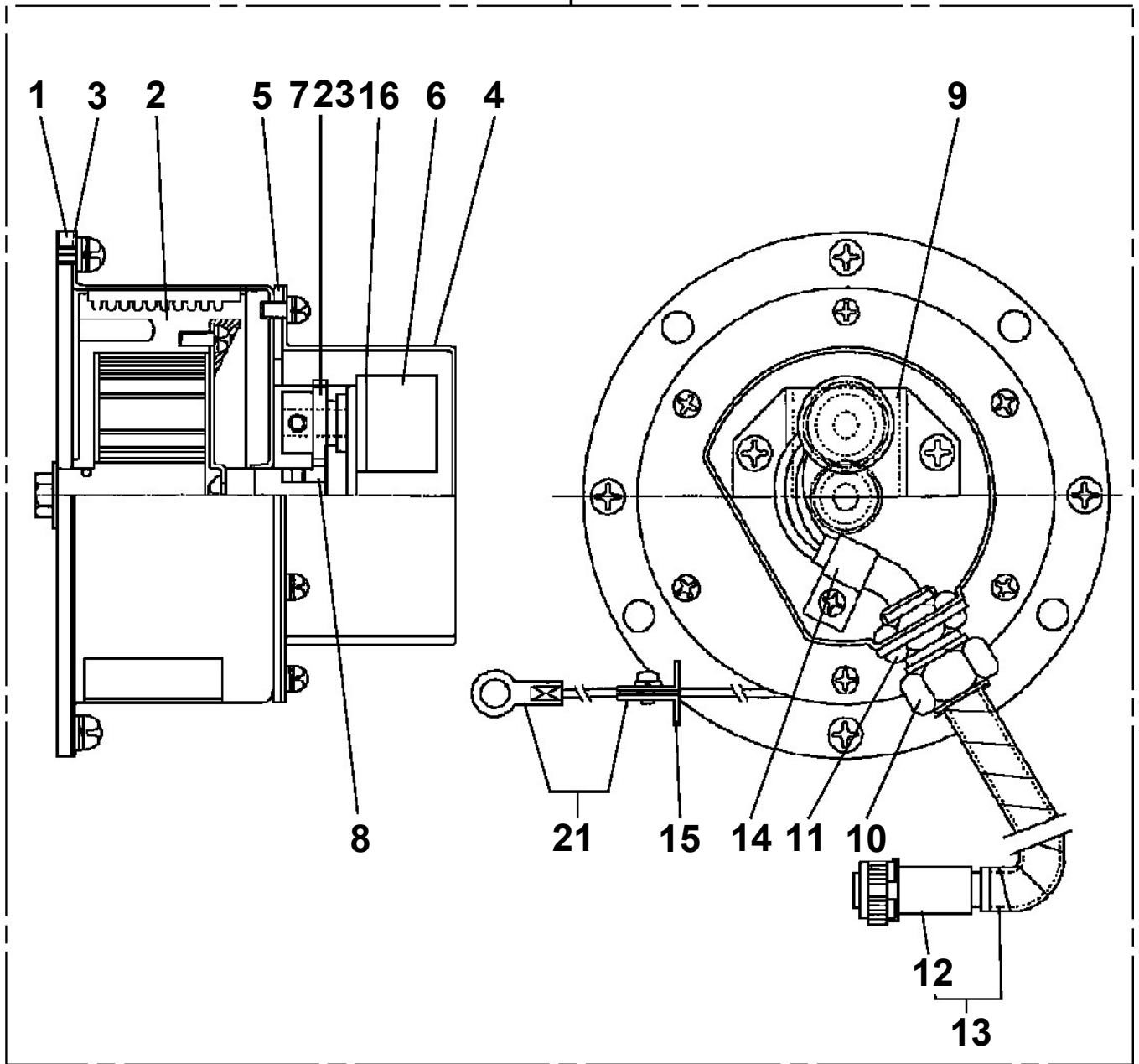
● : SEAL KIT KEY NO 490 ( KEY NO.15,16,27,30,118,119,120,121,132 )

# AT-100-2 42063200013 UPPER

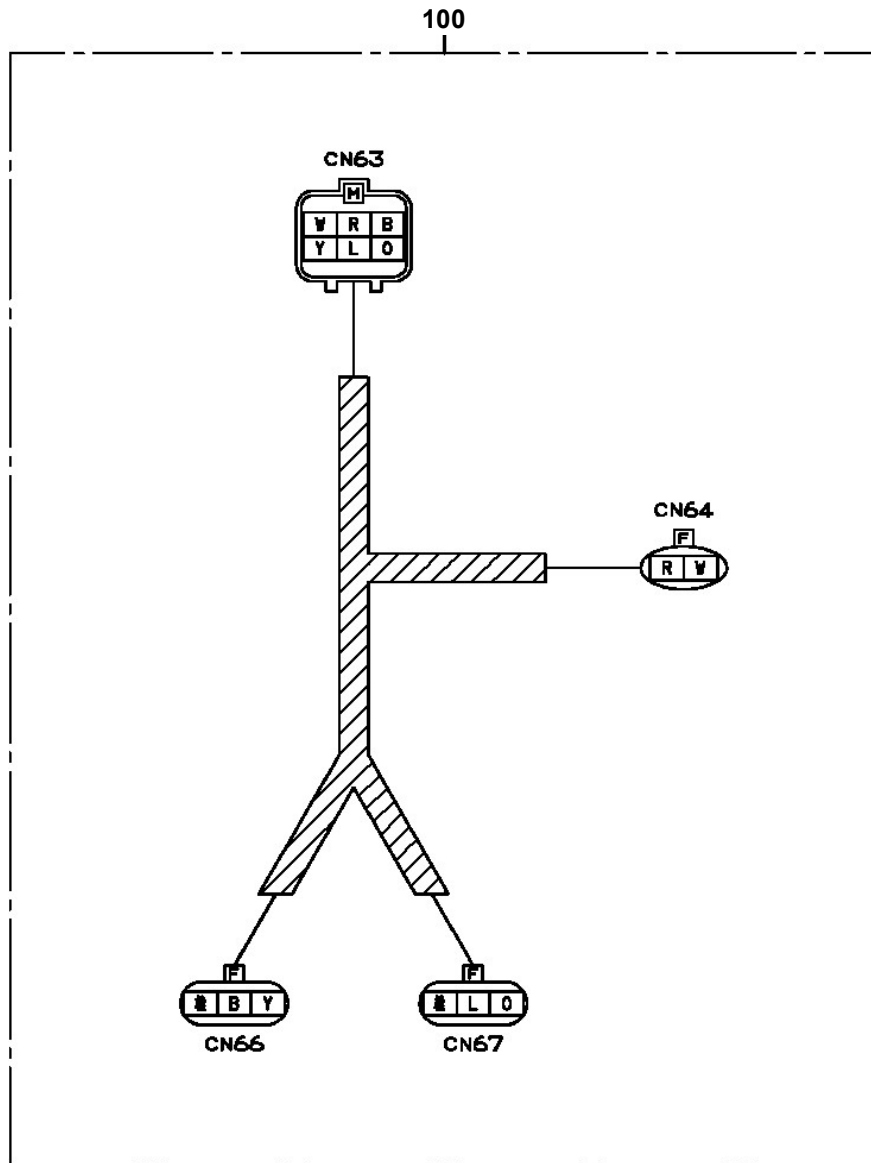
Pos No.	Parts No	Parts Name	Qty	Unit	Technical Data	Serial No (Start)	Serial No (End)	Remarks	Pages
1	42311283100	JIB	1						
2	42311283010	PLATE,NAME	2						
3	42220400010	GUIDE	1						
4	42220400020	GUIDE	1						
5	37001505350	BOLT	8		M6X20				
6	42220400030	GUIDE	2						
7	37001002260	SHEAVE	1						
8	37000312570	SPACER	2						
9	37000302490	SPACER	2		L=2				
10	80603110350	RING,RITAINING	2		C35				
11	42220400040	COVER	2						
12	42311283020	PIN	1						
31	80516006207	BEARING,BALL	1						

AT-100-2 42063200013 UPPER  
PG1130123-02 DETECTOR,BOOM LENGTH

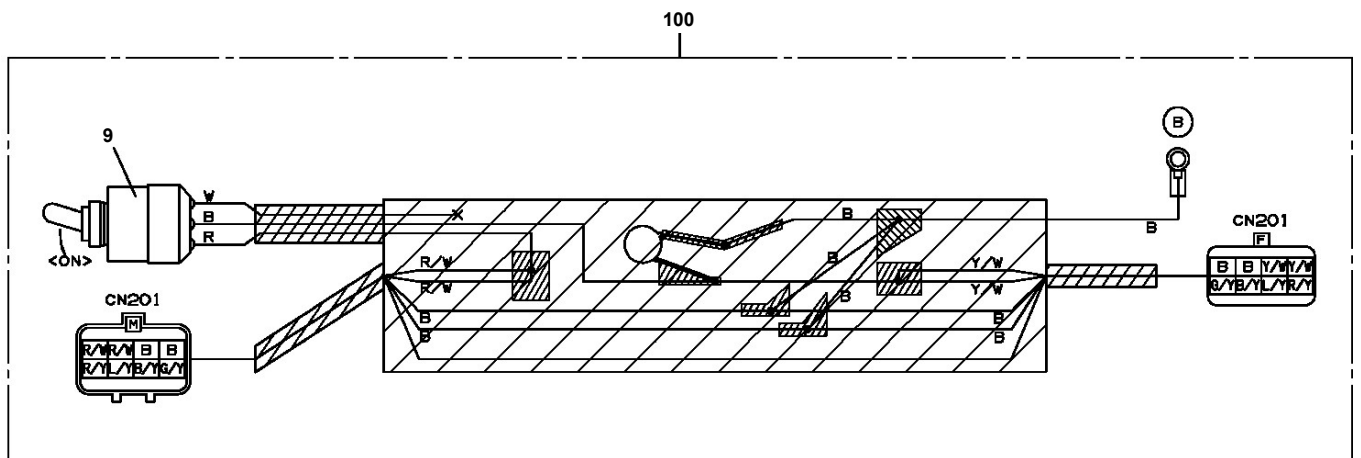
50



AT-100-2 42063200013 UPPER  
PH5031270-00 HARNESS

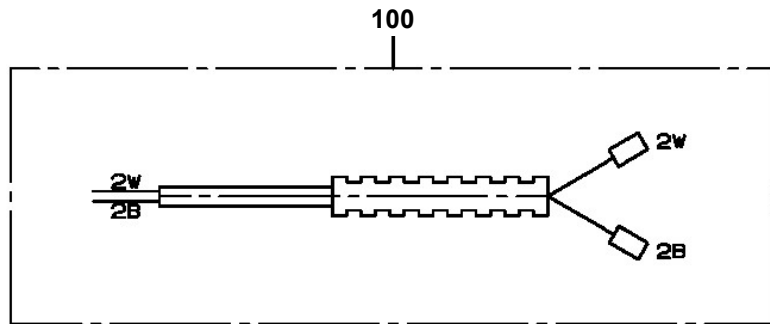


AT-100-2 42063200013 UPPER  
PH5032077-00 HARNESS

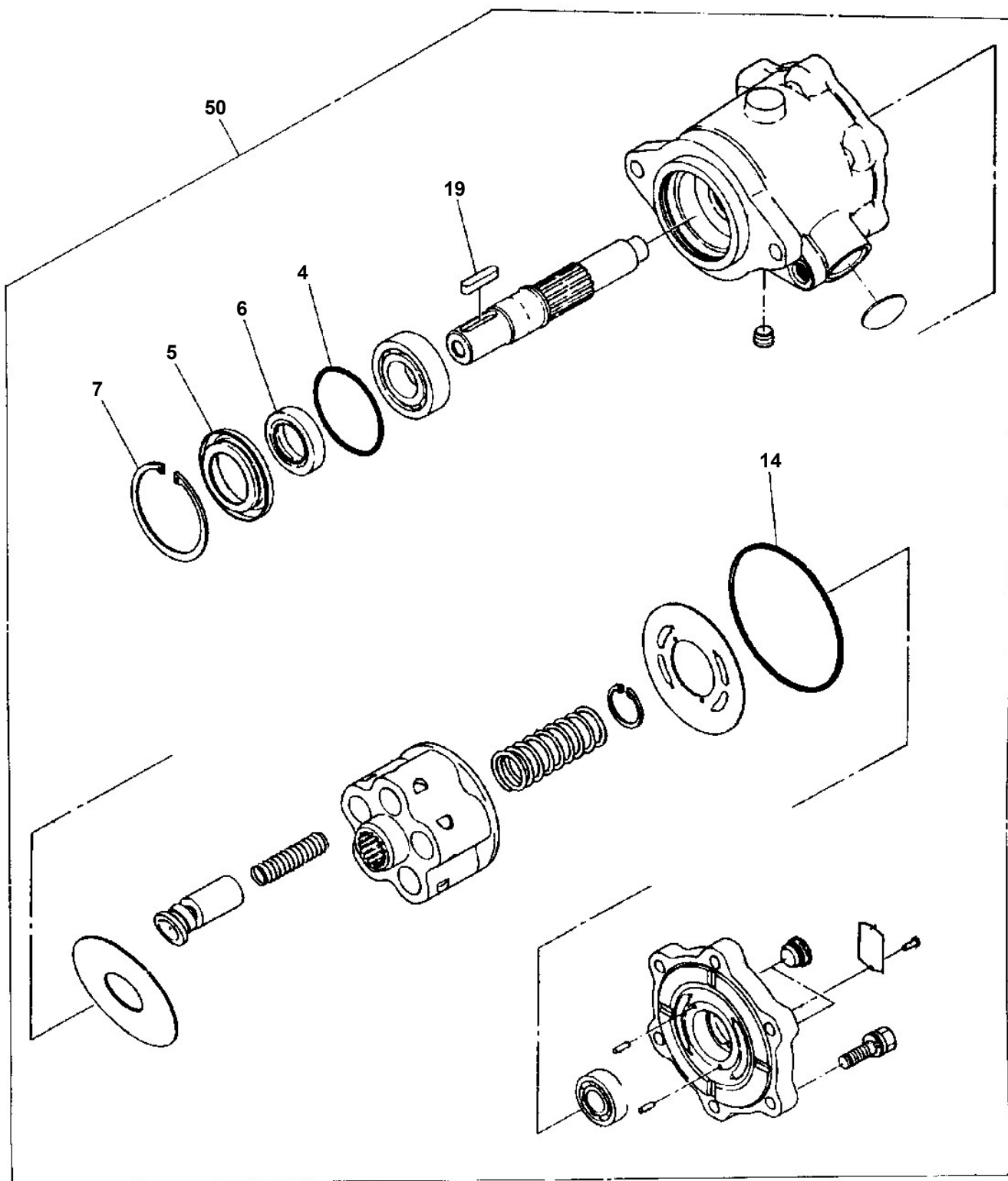




**AT-100-2 42063200013 UPPER  
PH5032150-00 HARNESS**



AT-100-2 42063200013 UPPER  
PI1010074-00 MOTOR, HYDRAULIC (SWING)



CLICK HERE TO **DOWNLOAD** THE COMPLETE MANUAL

- Thank you very much for reading the preview of the manual.
- You can download the complete manual from: [www.heydownloads.com](http://www.heydownloads.com) by clicking the link below

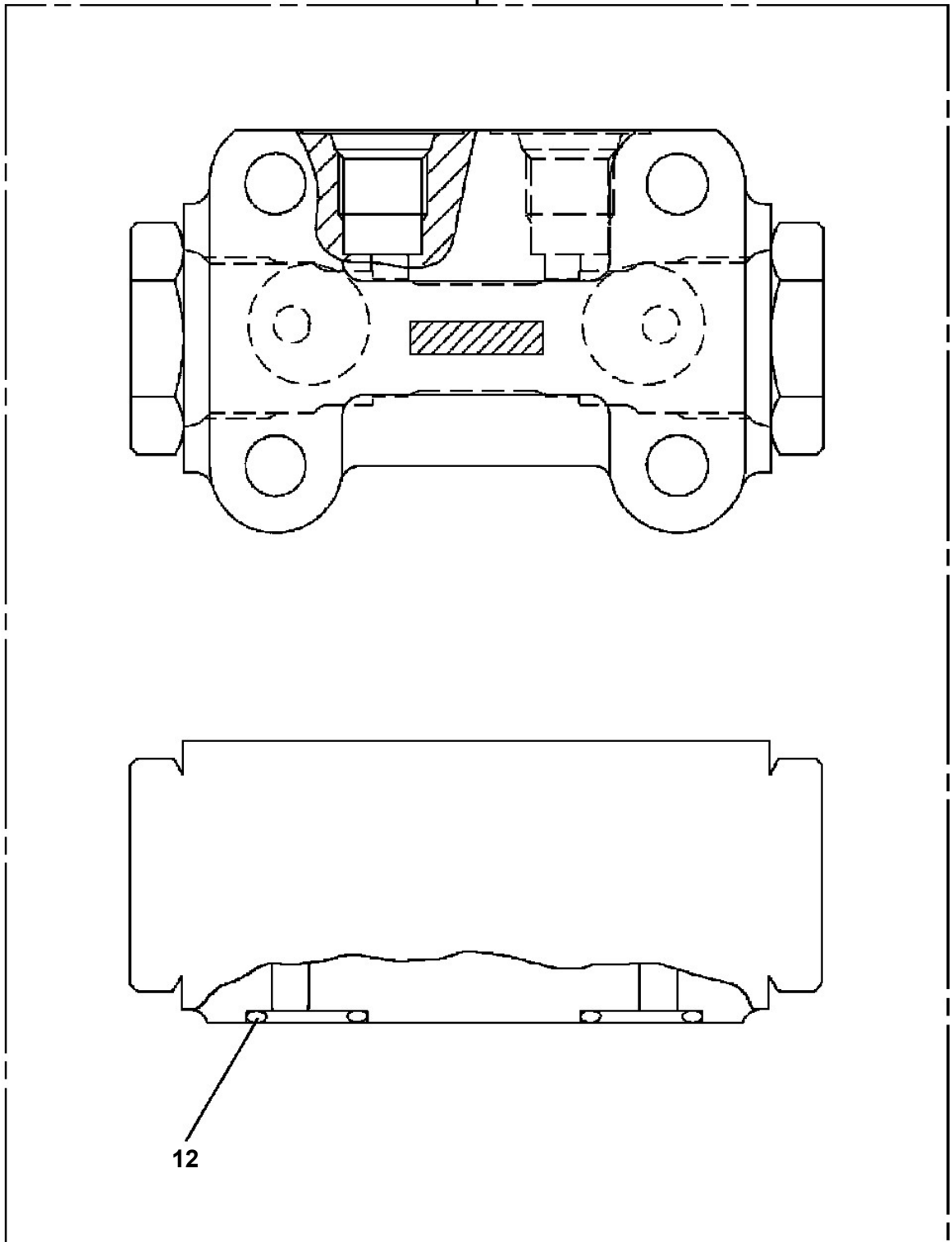


- Please note: If there is no response to CLICKING the link, please download this PDF first and then click on it.

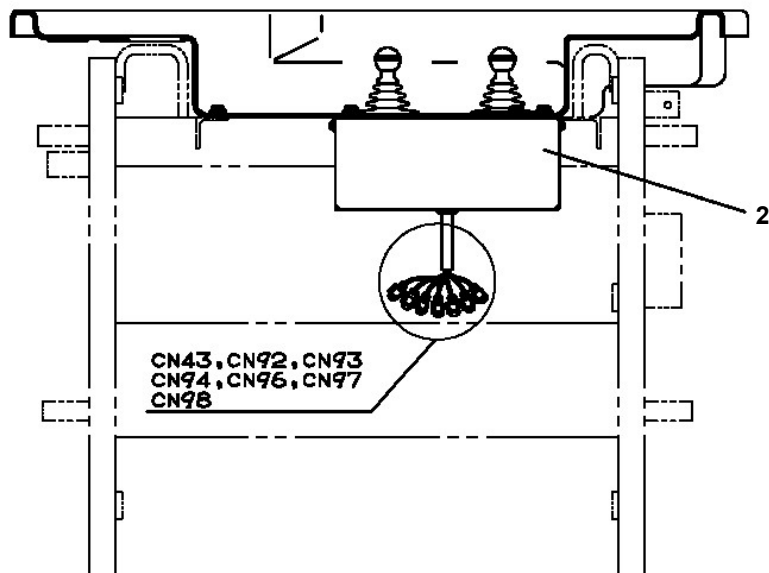
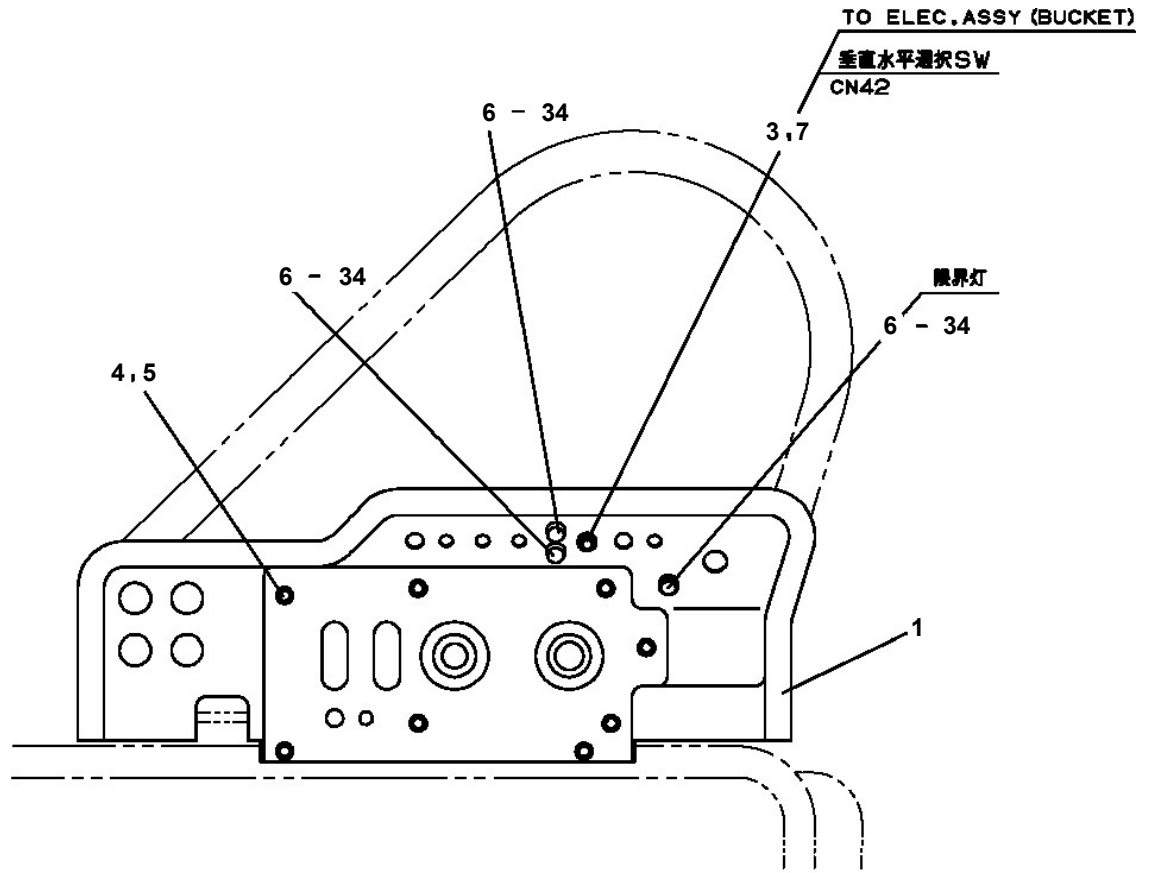
CLICK HERE TO **DOWNLOAD** THE COMPLETE MANUAL

AT-100-2 42063200013 UPPER  
PI1140227-00 VALVE,CHECK

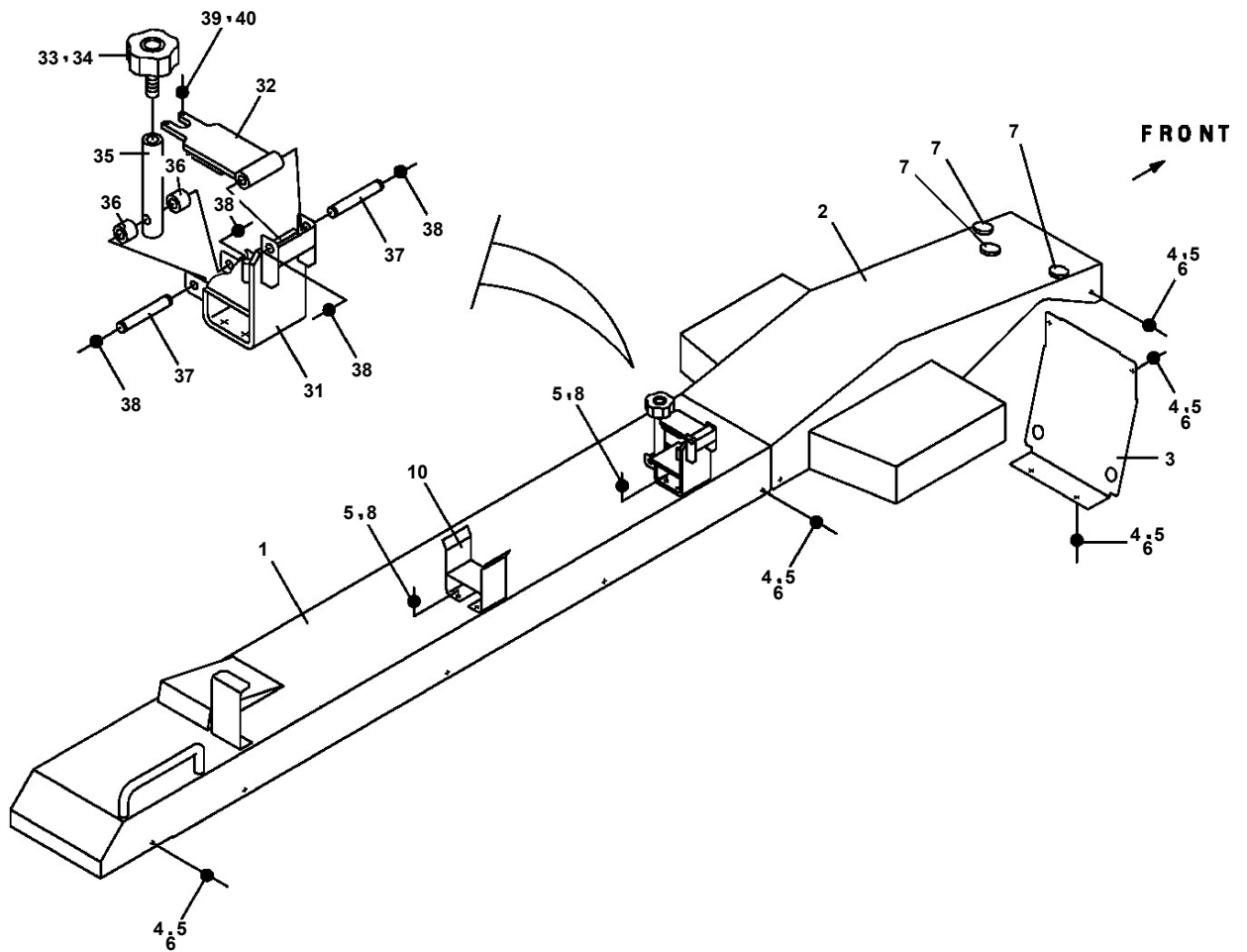
100



AT-100-2 42063200013 UPPER  
PJ3040008-03 OPE.ASSY (BUCKET/1-LEVER,2-OPE.)



**AT-100-2 42063200013 UPPER  
PK1330139-00 COVER (BOOM)**



# AT-100-2 42063200013 UPPER

Pos No.	Parts No	Parts Name	Qty	Unit	Technical Data	Serial No (Start)	Serial No (End)	Remarks
1	42331247570	COVER	1					
2	42331247580	COVER	1					
3	42331247540	PACKING	2					
4	42477617510	JOY STICK,CONTROLLER	1					
5	42477617520	JOY STICK,CONTROLLER	1					
6	42330037800	BOOT	2					
7	42330037810	KNOB	2					
9	82114101030	CONNECTOR (3P,MALE)	7					
10	82121102030	HOLDER (3P,BOTH)	7					
11	82111101010	TERMINAL	12					
12	82121101050	PLUG (BLACK/AV0.3 TO 0.5)	21					
13	42331247630	GROMMET	1					
14	80192883006	SCREW,MACHINE	4		M3X6			
15	82111101018	TERMINAL	9					
30	42331793000	LEVER,CONTROL	1					

# AT-100-2 42063200013 UPPER

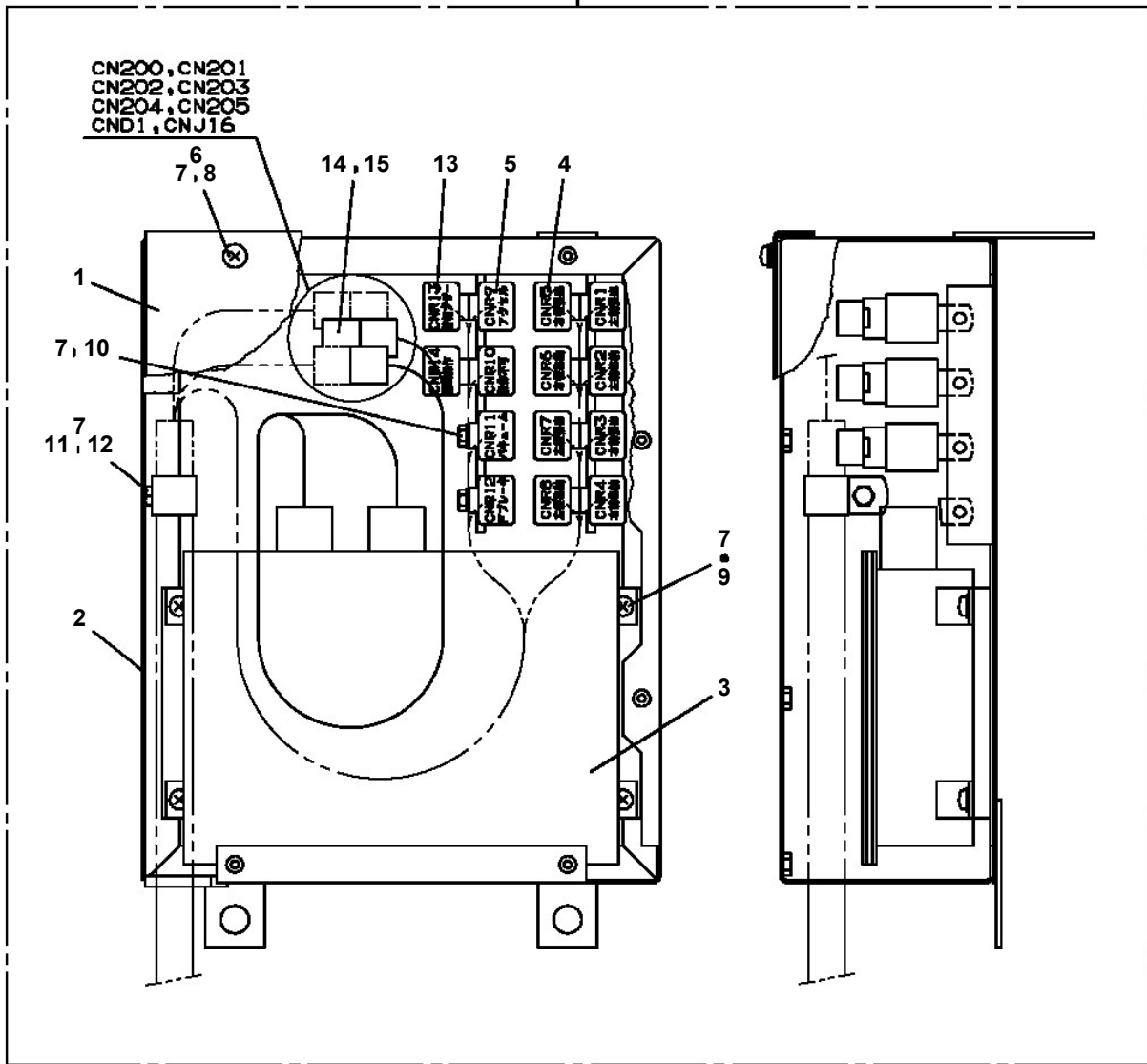
Pos No.	Parts No	Parts Name	Qty	Unit	Technical Data	Serial No (Start)	Serial No (End)
1	42651760101	HARNESS	1				
2	42651762001	RELAY ASSY	1				
3	(*****)	SWITCH PANEL	1				
4	82100002006	CLAMP	6		WR10		
5	90201200600	NUT	9		M6		
6	90302040601	WASHER,SPRING	11		6		
7	44430680200	BUZZER ASSY (WITH HARNESS)	1				
8	90101208014	BOLT	10		M8X14		
9	90302040801	WASHER,SPRING	12		8		
10	82100002004	CLAMP	1		WR8		
11	82100002010	CLAMP	1		WR15		
12	82100002018	CLAMP	1		WR35		
13	82100002019	CLAMP	3		WR40		
14	90201200800	NUT	3		M8		
15	42651763100	COVER	1				
16	90303070801	WASHER,PLAIN	1		8		
17	82100002014	CLAMP	1		WR20		
18	42651593500	SWITCH ASSY (WITH CONNECTOR)	1				
19	91810132530	FASTENER	20				
20	80182306010	SCREW,MACHINE	2		M6X10		
51	42651762101	SUPPORT	1				
52	82161202010	RELAY	2				
53	82100002597	RELAY	2				
54	82161201010	RELAY	3				
55	82100002596	RELAY	13				
56	90101206010	BOLT	20		M6X1.0		
57	90302040601	WASHER,SPRING	20		6		

# AT-100-2 42063200013 UPPER

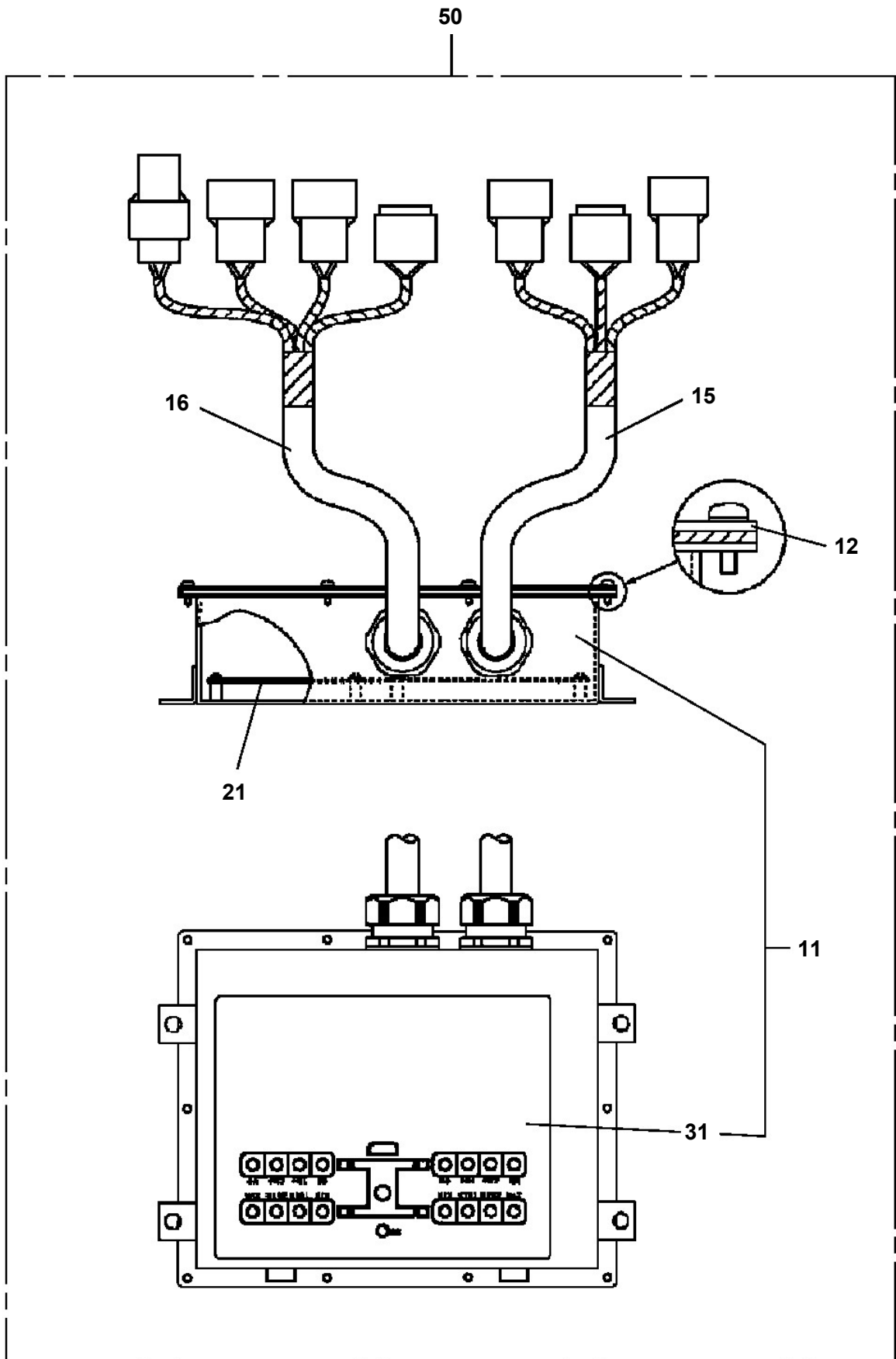
Pos No.	Parts No	Parts Name	Qty	Unit	Technical Data	Serial No (Start)	Serial No (End)	Remarks
1	42350250070	PLUG (2 POLES,MALE)	1					
11	42478362100	HARNESS	1					
12	42478362500	RELAY ASSY	1					
13	36140510000	DETECTOR ASSY,ANGLE	1					
14	42478362200	PLATE	1					
15	42651620400	COVER	1					
16	90101208016	BOLT	7		M8X16			
17	90302040801	WASHER,SPRING	6		8			
18	90101206014	BOLT	2		M6X14			
19	90302040601	WASHER,SPRING	2		6			
20	91810130240	FASTENER	20					
21	37000547660	PLATE	2		T=2.3			
52	82400000201	GROMMET	1		KG-016			
61	37002220430	PLATE,CAUTION	1					

**AT-100-2 42063200013 UPPER  
PN1110260-02 RELAY ASSY (KANDENKO)**

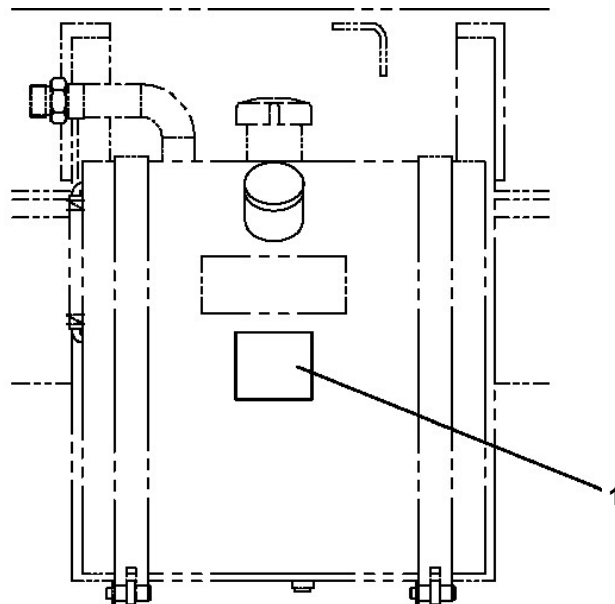
100




AT-100-2 42063200013 UPPER  
PN1180026-01 CONTROLLER



AT-100-2 42063200013 UPPER  
PO1013121-01 PLATE ASSY,NAME (HYDRAULIC OIL)



1

	<b>注 意</b>
<p>・ポンプの換付等により重大な故障の原因となるので、 “作動油”または“油圧ポンプ”を交換したときは、 必ず油圧ポンプのエア抜きを行ってください。 ・油量は、必ず先行要領で確認してください。</p>	
<b>純正作動油</b>	
<b>タダノハイドロリックオイル LL</b>	
370-022-17330-2	

# AT-100-2 42063200013 UPPER

Pos No.	Parts No	Parts Name	Qty	Unit	Technical Data	Serial No (Start)	Serial No (End)	Remarks	Page
1	42394442040	PLATE,NAME	1						
2	42394442050	PLATE,CAUTION	1						
3	42394712010	PLATE,NAME	1						
4	42394442100	PLATE,NAME	1						
5	42394442110	PLATE,NAME	1						
7	42394442130	PLATE,NAME	1						
8	42394442180	PLATE,NAME	1						
9	42394442150	PLATE,NAME (AWL)	1						
10	42394442160	PLATE,NAME	1						
11	42394442170	PLATE,NAME	1						
12	42394442070	PLATE,NAME	1						
13	42394441060	PLATE,CAUTION	1						
14	42394191150	PLATE,NAME	1						
15	42331782080	PLATE,NAME	1						
16	42331782090	PLATE,NAME	1						
17	42331782100	PLATE,NAME	1						
18	42393202020	PLATE,NAME	1						
19	42391163120	PLATE,NAME	1						
20	42475910010	PLATE,NAME	5						

# AT-100-2 42063200013 UPPER

Pos No.	Parts No	Parts Name	Qty	Unit	Technical Data	Serial No (Start)	Serial No (End)	Remarks	Pa
1	44550527580	SWITCH,MICRO	1						
2	44550527570	COVER	1						
3	44350247560	SPRING (FOR PEDAL)	1						
4	82109901050	PEDAL	1						
5	82109905010	PACKING	1						
6	44350247580	PLATE (WITH SCREW)	1						
100	44350240100	SWITCH ASSY	1						

# AT-100-2 42063200013 UPPER

Pos No.	Parts No	Parts Name	Qty	Unit	Technical Data	Serial No (Start)	Serial No (End)
1	42460012550	WEDGE (STOPPER FOR TIRE/JUSTIN)	1				

# AT-100-2 42063200013 UPPER

Pos No.	Parts No	Parts Name	Qty	Unit	Technical Data	Serial No (Start)	Serial No (End)
1	42470330000	ROPE (SAFETY,YELLOW:TD-TYPE)	1				

# AT-100-2 42063200013 UPPER

Pos No.	Parts No	Parts Name	Qty	Unit	Technical Data	Serial No (Start)	Serial No (End)	Re
1	42650860900	LAMP ASSY	1					
2	80162305020	SCREW,MACHINE	2		M5X20			
3	90302040501	WASHER,SPRING	2		5			
4	90303070501	WASHER,PLAIN	2		5			
5	90201200500	NUT	2		M5			
6	42736070100	SWITCH ASSY (WITH HARNESS)	1					
7	42475560010	PLATE,NAME	1					
8	42477820100	HARNESS	1					
9	82197518119	CAP (PLUS ONE MFG./BLACK)	1					
	82197518114	CAP (MATSUSHITA/BLACK)	1					

# AT-100-2 42063200013 UPPER

Pos No.	Parts No	Parts Name	Qty	Unit	Technical Data	Serial No (Start)	Serial No (End)	Remarks	Pages
1	42478300100	BUZZER ASSY	1						
2	80161302520	SCREW,MACHINE	2		M2.5X20				
3	90302040251	WASHER,SPRING	2		2.5				

# AT-100-2 42063200013 UPPER

Pos No.	Parts No	Parts Name	Qty	Unit	Technical Data	Serial No (Start)	Serial No (End)	Remarks
1	42472650000	HANGER (FOR BUCKET)	1					

CLICK HERE TO **DOWNLOAD** THE COMPLETE MANUAL

- Thank you very much for reading the preview of the manual.
- You can download the complete manual from: [www.heydownloads.com](http://www.heydownloads.com) by clicking the link below



- Please note: If there is no response to CLICKING the link, please download this PDF first and then click on it.

CLICK HERE TO **DOWNLOAD** THE COMPLETE MANUAL