

KRYPTON 100 -> 2001

ACCESSORIES

GENERAL

6-WAY AUXILIARY DISTRIBUTOR.....	0E.00.1
6-WAY AUXILIARY DISTRIBUTOR.....	0E.00.2
6-WAY AUXILIARY DISTRIBUTOR.....	0E.00.3
PLATES- FOR 6-WAY DISTRIBUTOR.....	0E.00.4
10-WAY AUXILIARY DISTRIBUTOR.....	0E.00.5
10-WAY AUXILIARY DISTRIBUTOR.....	0E.00.6
10-WAY AUXILIARY DISTRIBUTOR.....	0E.00.7
PLATES- FOR 10-WAY DISTRIBUTOR.....	0E.00.8
REINFORCED 3-POINT LINKAGE.....	0E.00.9
REINFORCED 3-POINT LINKAGE.....	0E.00.10
BRACKET FOR TOP LINK SUPPORT SPRING.....	0E.00.11
FRONT TOWING HITCH.....	0E.00.12
TOWING BAR mm 1603.5.....	0E.00.13
TOWING BAR mm 1431.....	0E.00.14
CURVED CROSS MEMBER FOR DRAWBAR.....	0E.00.15
FRONT BALLAST n. 8.....	0E.00.16
FRONT BALLAST n. 4.....	0E.00.17
FRONT WEIGHT CARRIER.....	0E.00.18
SIDE BALLASTS kg 100.....	0E.00.19
SIDE BALLASTS kg 200.....	0E.00.20
PLATE FOR FRONT CARRIER.....	0E.00.21
P.T.O. GUARD.....	0E.00.22
LUBRICATOR.....	0E.00.23
TOOL POUCH.....	0E.00.24

CLICK HERE TO **DOWNLOAD** THE COMPLETE MANUAL

- Thank you very much for reading the preview of the manual.
- You can download the complete manual from: www.heydownloads.com by clicking the link below

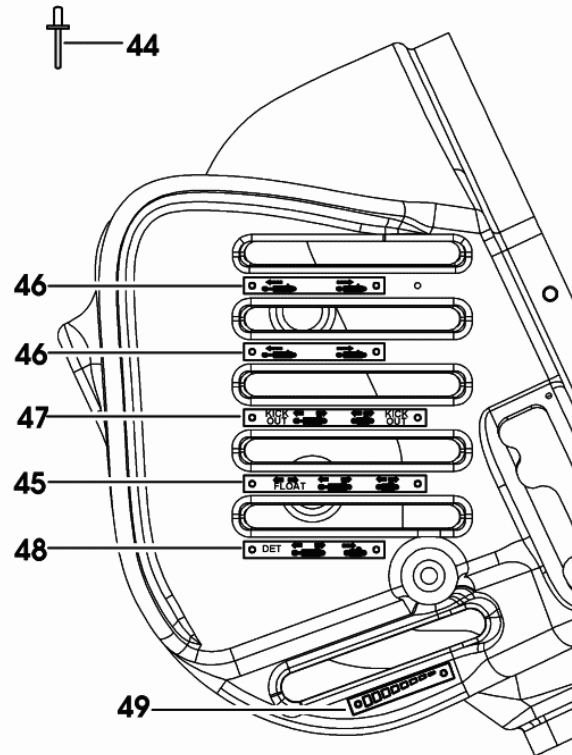


- Please note: If there is no response to CLICKING the link, please download this PDF first and then click on it.

CLICK HERE TO **DOWNLOAD** THE COMPLETE MANUAL

PLATES- FOR 10-WAY DISTRIBUTOR

Fig.	Code	QTY	Name
44	2.1856.002.0	12	rivet 3.2x40
45	2.9929.803.0	1	plate float
46	2.9929.271.0	2	plate
47	2.9929.799.0	1	plate
48	2.9929.490.0	1	plate
49	2.9929.800.0	1	plate

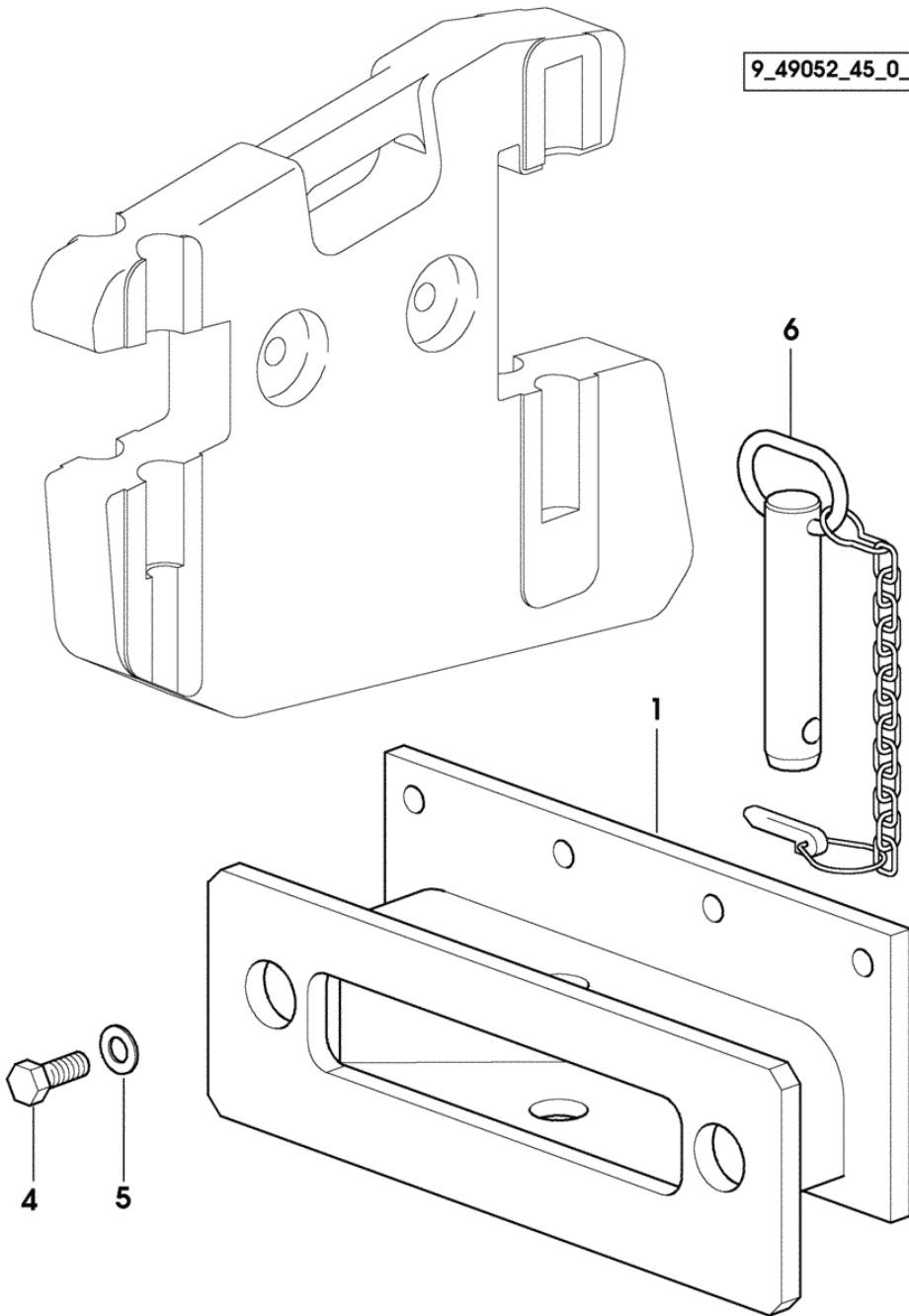


9_18788_35_0_C

Section: ACCESSORIES
FRONT WEIGHT CARRIER

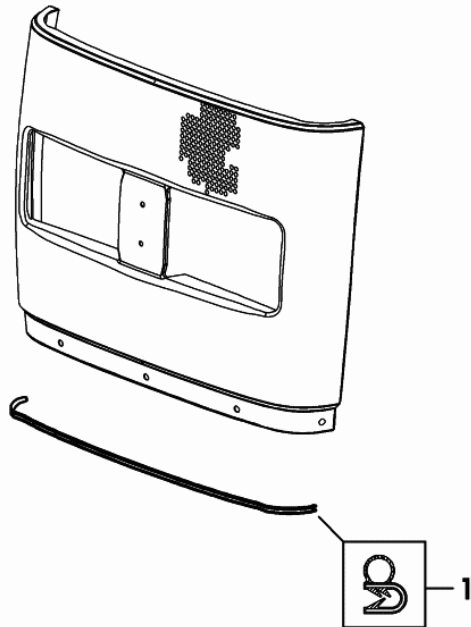
9_49052_45_0_0

Fig.	Code	QTY	Name
1	0.011.7376.2	1	support
4	2.0112.515.2	6	screw m 14 p.2 x 40
5	2.1310.009.2	6	flat washer 14
6	0.96309.51.3	1	pin Ø 32



Section: BODY WORK
HOOD FRONT PART

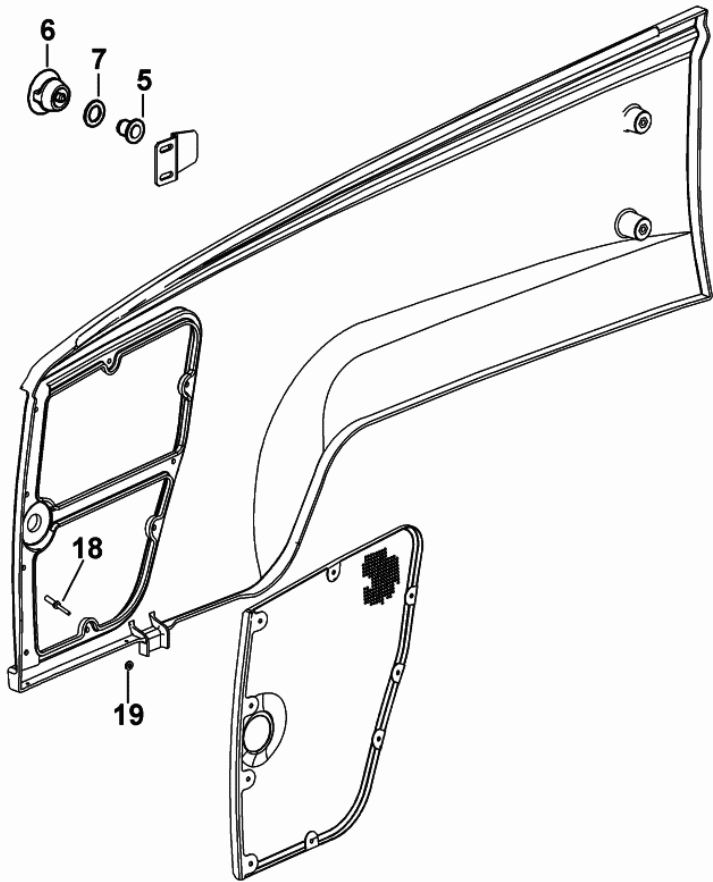
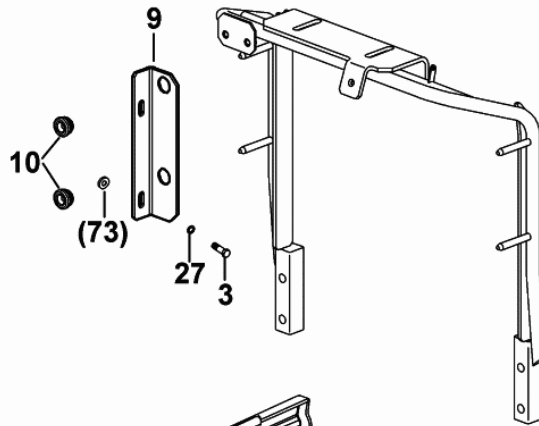
Fig.	Code	QTY	Name
1	0.012.7117.0/10	1	gasket mm 545



9_D8972_35_0_0

Section: BODY WORK
HOOD - SUPPORTS

Fig.	Code	QTY	Name
3	2.0112.206.2	2	screw m 8 p.1.25 x 18
5	2.1559.337.0	1	bushing
6	0.008.3426.2/30	1	knob
7	2.1599.658.0	1	washer
9	0.012.5613.0/20	1	bracket dx/rh/re
10	0.009.6531.0/30	2	block
18	2.1899.074.0	9	rivet 4.7
19	2.1310.001.2	9	flat washer 5.3
27	2.1470.004.2	2	washer 8

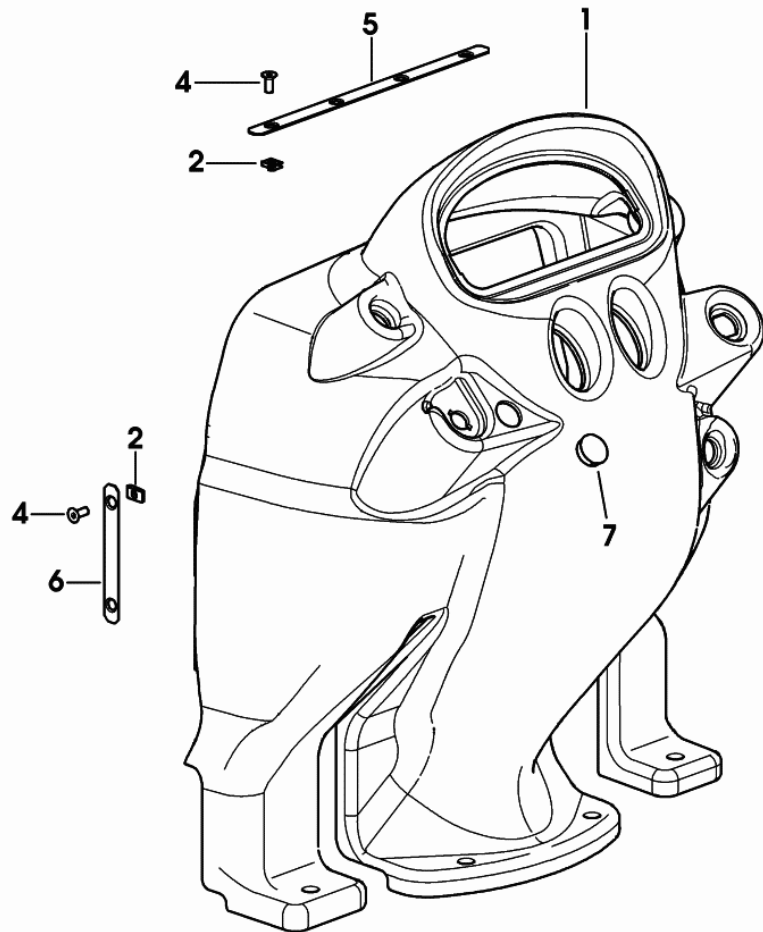


9_D8972_15_0_0

Section: BODY WORK

DASHBOARD

Fig.	Code	QTY	Name
1	0.012.3554.0/40	1	dashboard 2039 <- X KRYPTON 90 2124 <- X KRYPTON 100
1	0.012.3554.0/50	1	dashboard -> 2040 X KRYPTON 90 -> 2125 X KRYPTON 100
2	2.6999.046.2	8	special nut m 8
4	2.0342.305.3	8	screw m 8 p 1.25 x 20
5	0.012.8118.0/10	1	cap-washer
6	0.012.8117.0/10	2	cap-washer
7	01180575	1	plug



9_18774_00_0_0

Section: BODY WORK
FENDERS AND PLATFORM

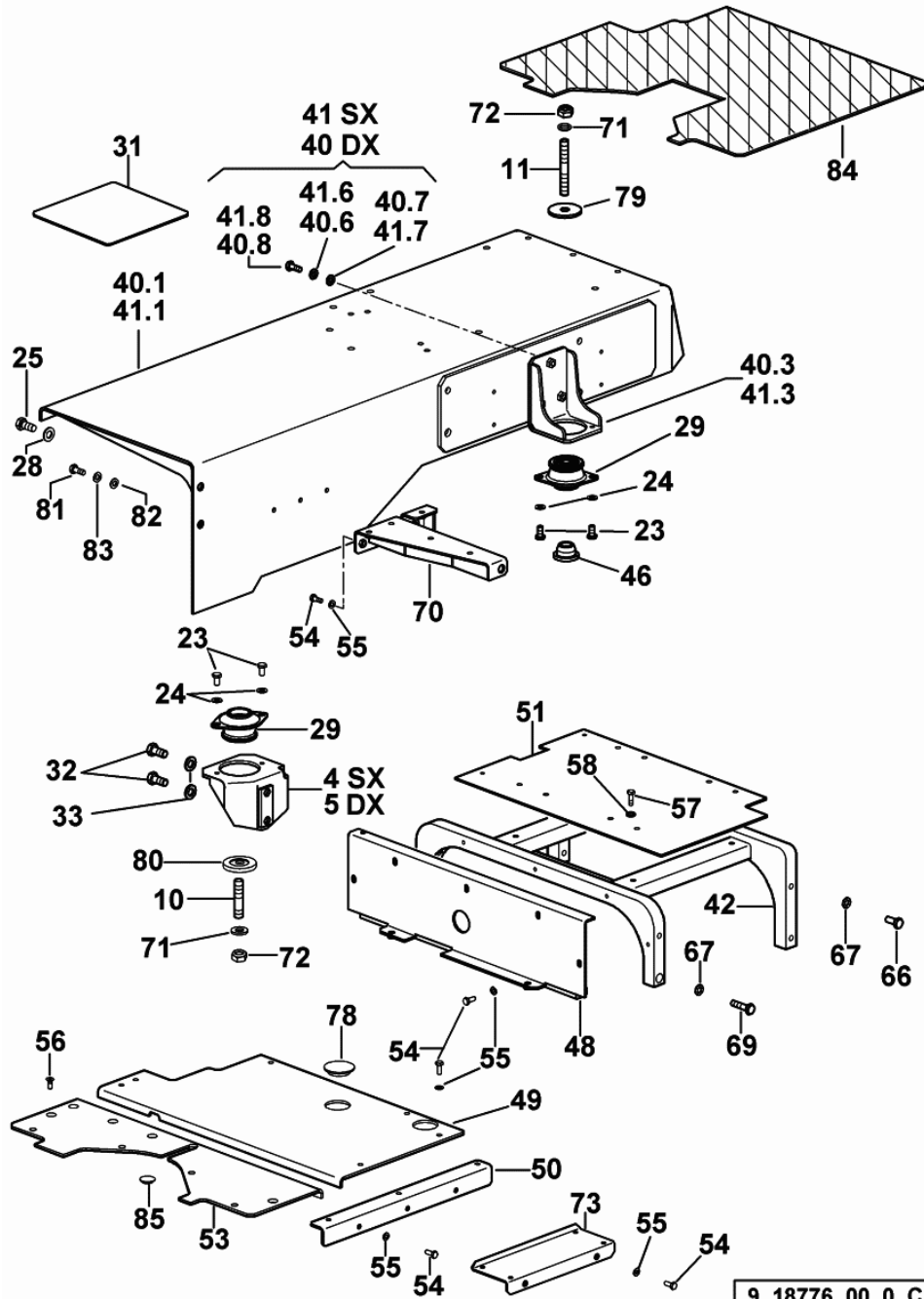


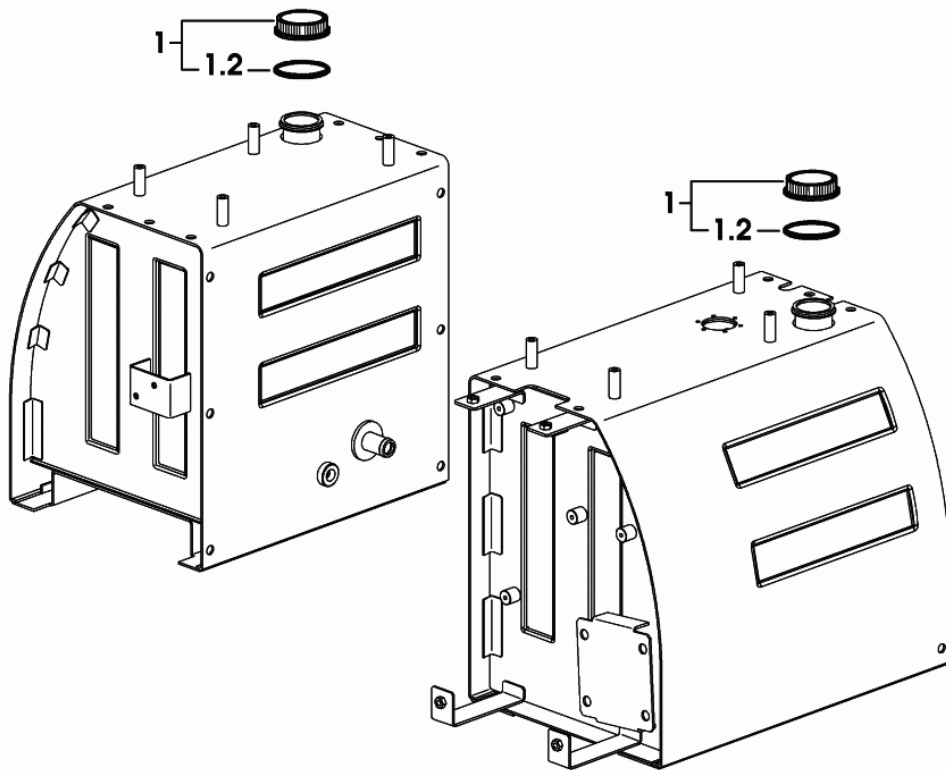
Fig.	Code	QTY	Name
------	------	-----	------

Notes:
 2020 <- X KRYPTON 90 2050 <- X KRYPTON 100

4	0.012.6519.2	1	support sx/lh/li
5	0.012.6520.0	1	support dx/rh/re
10	2.0439.236.2	2	stud bolt m 16 p.1.5 x 87
11	2.0439.257.2	2	stud bolt m 16 p.1.5X85
23	2.0112.307.2	8	screw m 10 p.1.5 x 20
24	2.1310.006.2	8	flat washer 10.5
25	2.0112.411.2	4	screw m 12 p.1.75 x 30
28	2.1475.004.2	4	washer 12
29	0.012.4522.0	4	silent-block
31	0.191.7652.0/20	2	foot board
32	2.0112.513.2	4	screw m 14 p.2 x 35
33	2.1475.205.7	4	washer 15x35
40	0.000.0000.1	0	not serviceable
40.1	0.012.5965.3/70	1	fender dx/rh/re
40.3	0.012.5885.3	1	support
40.6	2.1310.006.2	3	flat washer 10.5
40.7	2.1475.003.2	3	washer 10
40.8	2.0112.311.2	3	screw m 10 p.1.5 x 30
41	0.000.0000.1	0	not serviceable
41.1	0.012.5964.3/70	1	fender sx/lh/li
41.3	0.012.5885.3	1	support
41.6	2.1310.006.2	3	flat washer 10.5
41.7	2.1475.003.2	3	washer 10
41.8	2.0112.311.2	3	screw m 10 p.1.5 x 30
42	0.013.0166.3/10	1	chassis frame
46	0.012.5976.0	2	small block
48	0.012.2561.3/30	1	stone trough
49	0.012.6040.0/30	1	foot board
50	0.012.3743.3/10	1	support sx/lh/li
51	0.012.5961.3/20	1	plate
53	0.012.6039.0	1	foot board
54	2.0114.207.2	17	screw m 8 p.1.25 x 20
55	2.1310.004.2	17	flat washer 8.5
56	2.0342.305.3	5	screw m 8 p 1.25 x 20
57	2.0112.209.2	4	screw m 8 p 1.25 x 25
58	2.1310.004.2	4	flat washer 8.5
66	2.0113.415.2	6	screw m 12 p.1.75 x 40
67	2.1475.204.2	8	washer 12
69	2.0112.423.2	2	screw m 12 p.1.75 x 70
70	0.012.6037.3/20	1	support
71	2.1310.010.2	1	flat washer 16

PLUG

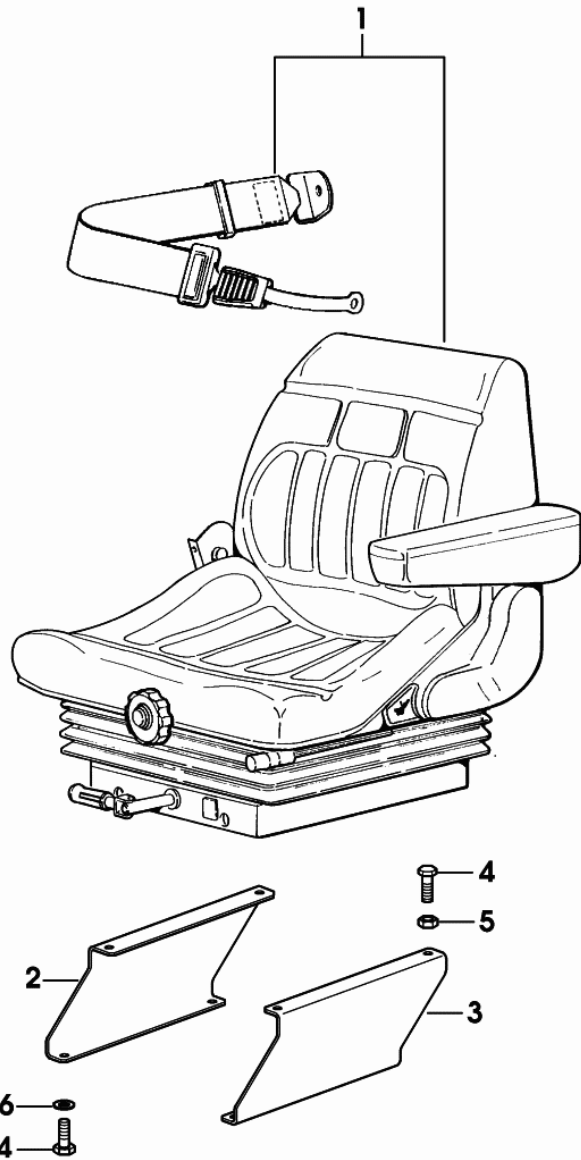
Fig.	Code	QTY	Name
1	0.177.8116.3/30	2	plug
1.2	2.1569.157.0	1	gasket 37.8x59.8x3



9_18781_05_0_0

SEAT WITH MECHANICAL SPRINGING AND SEATBELTS

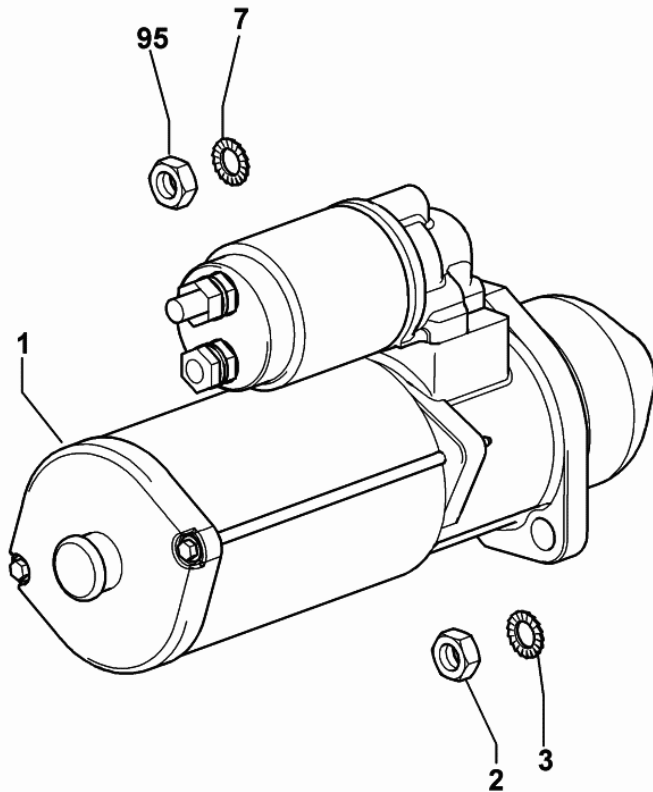
Fig.	Code	QTY	Name
1	0.012.5808.4/10	1	seat KAB 211 COMPONENT PARTS SEE COMPONENTS LIST ☞ 0.012.5808.4/10 ☞ 07.00.20
2	0.012.5816.0	1	spacer dx/rh/re
3	0.012.5817.0	1	spacer sx/lh/li
4	2.0119.164.3	8	screw m 8 p.1.25 x 20
5	2.1011.105.2	8	nut m 8 p.1.25
6	2.1499.096.3	8	washer 8



9_18775_03_0_0

STARTER BOSCH 3 KW

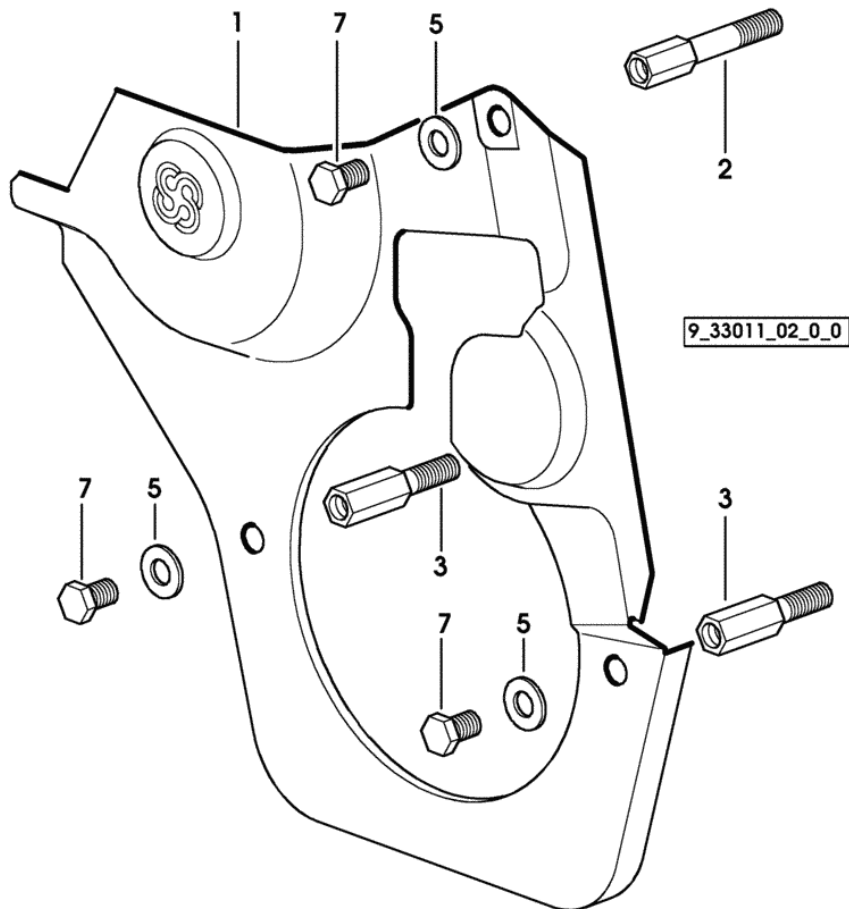
Fig.	Code	QTY	Name
1	2.9619.390.0	1	starter motor 12 V, 3 kW, Z = 9 COMPONENT PARTS SEE COMPONENTS LIST ☞ 2.9619.390.0 ☞ 08.00.36
2	2.1011.106.2	1	nut m 10 p.1.5
3	2.1470.007.2	1	lock washer 12
7	2.1470.006.2	1	lock washer 10
95	2.1011.106.2	1	nut m 10 p.1.5



9_71884_09_0_0

Section: ENGINE
GUARD PLATE

Fig.	Code	QTY	Name
1	0.007.1262.3/50	1	sump
2	0.007.1271.0/10	1	small column m 8 p.1.25 / L = mm 60
3	0.007.1272.0/10	2	small column m 8 p.1.25 / L = mm 50
5	2.1310.004.2	3	flat washer 8.5
7	2.0112.203.2	3	screw m 8 p.1.25 x 12



CLICK HERE TO **DOWNLOAD** THE COMPLETE MANUAL

- Thank you very much for reading the preview of the manual.
- You can download the complete manual from: www.heydownloads.com by clicking the link below

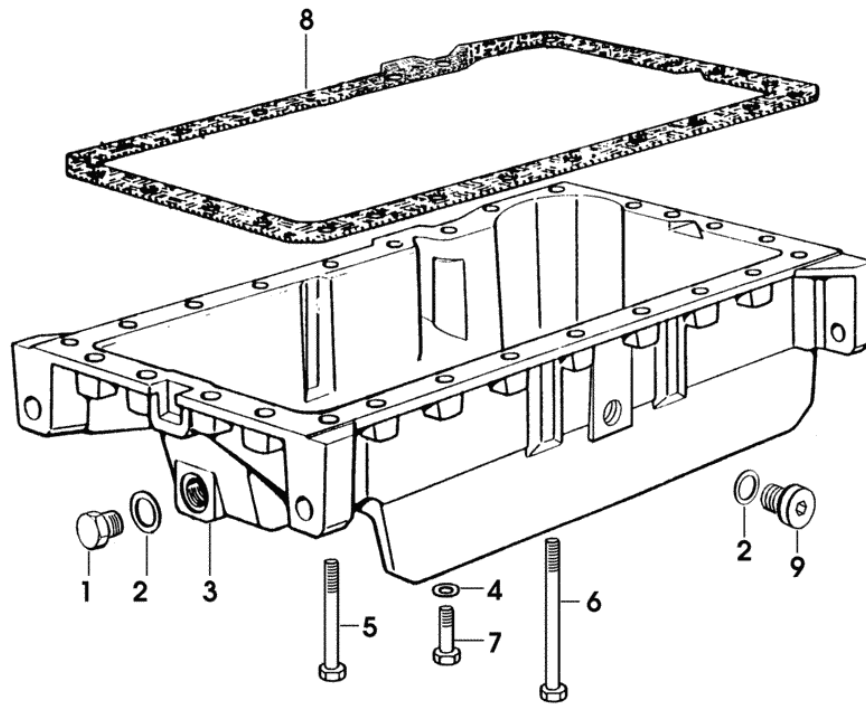


- Please note: If there is no response to CLICKING the link, please download this PDF first and then click on it.

CLICK HERE TO **DOWNLOAD** THE COMPLETE MANUAL

OIL PAN

Fig.	Code	QTY	Name
1	2.3110.513.2	1	plug 1/2 gas
2	2.1560.054.0	2	gasket 21 x 26
3	0.007.1298.0	1	oil pan
4	2.1470.004.2	26	washer 8
5	2.0112.226.2	4	screw m 8 p.1.25 x 85
6	2.0112.235.2	5	screw m 8 p.1.25 x 130
7	2.0112.215.2	17	screw m 8 p.1.25 x 40
8	0.065.1550.0/10	1	gasket
9	2.3199.001.2	1	plug 1/2" gas



9_33215_13_0_0

Section: ENGINE
FUEL FEED PUMP

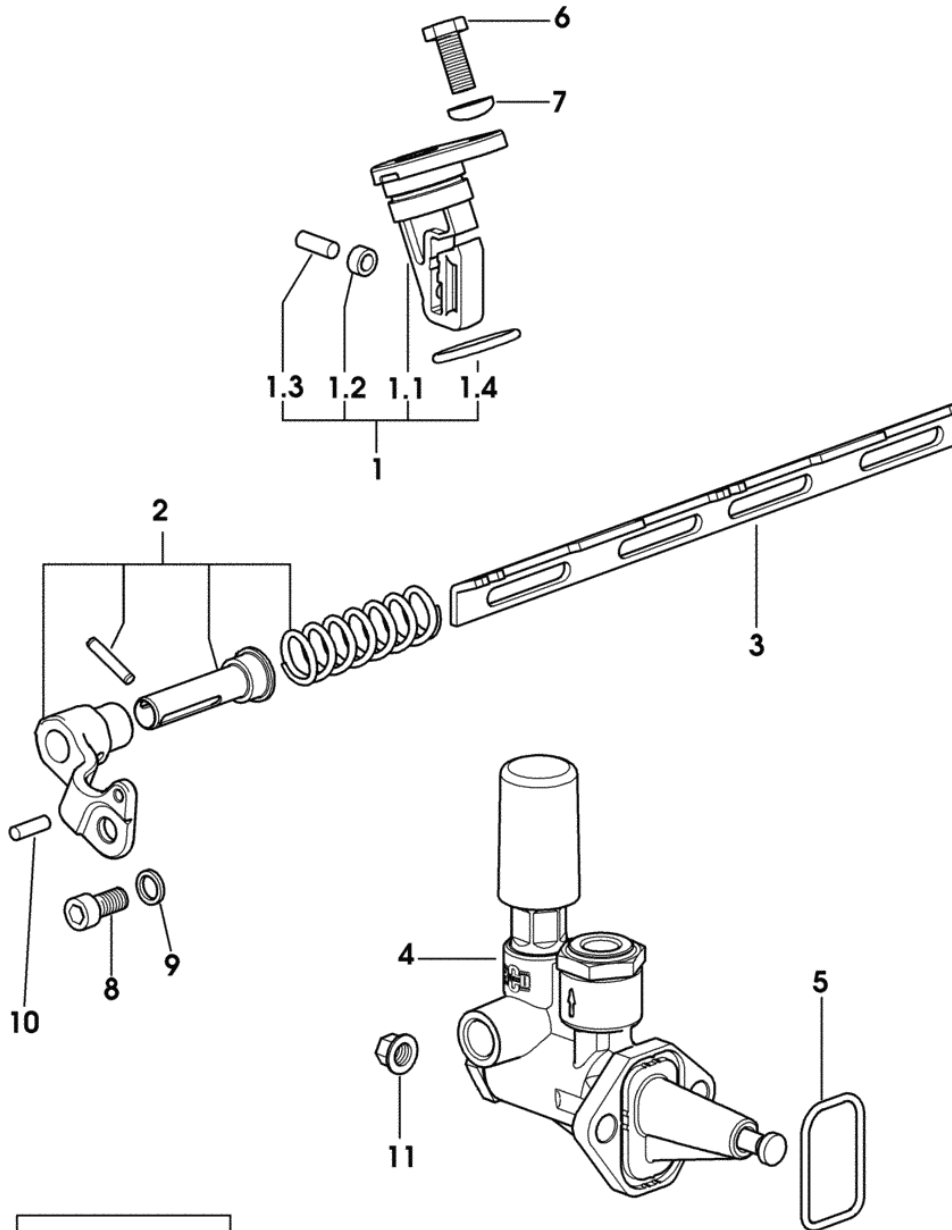
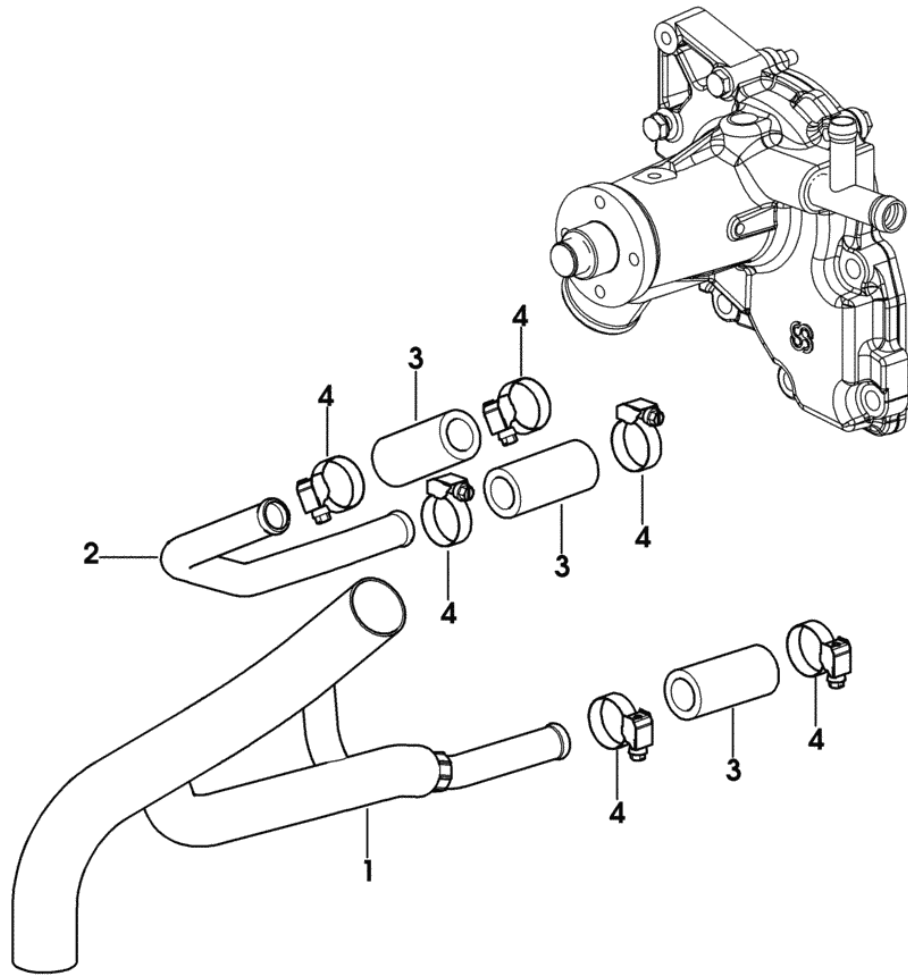


Fig.	Code	QTY	Name
1	0.000.0000.1	0	not serviceable
1.1	0.012.5618.0/20	1	support
1.2	0.065.1660.0	1	roller
1.3	2.1651.507.0	1	pin 6 x 16
1.4	2.1530.072.0	1	'o' ring 26.70x1.78
2	0.013.4057.4	1	bracket
3	0.013.0944.3/20	1	rod
4	2.4519.330.0/50	1	feed pump
			COMPONENT PARTS SEE
			COMPONENTS LIST
			☞ 2.4519.330.0/50
			☞ 01.00.3
5	2.1539.045.0	1	'o' ring 37.77x2.62
6	2.0112.207.2	2	screw m 8 p 1.25 x 20
7	2.1310.004.2	2	flat washer 8.5
8	2.0312.204.2	1	screw m 8 p.1.25 x 16
9	2.1475.202.2	1	spring washer 8.4 x 16
10	2.1631.305.0	1	roll pin 4 x 12
11	2.1099.159.2/10	2	nut m 8

9_M8216_00_0_0

Section: ENGINE
COOLANT PIPE

Fig.	Code	QTY	Name
1	0.013.7213.2	1	tube
2	0.082.1752.0	1	tube
3	0.007.0678.0/10	3	sleeve 18x28x60
4	2.6851.002.0	6	clamp Ø 20/32



9_N4617_02_0_0

OIL PIPES FOR TURBOCHARGER

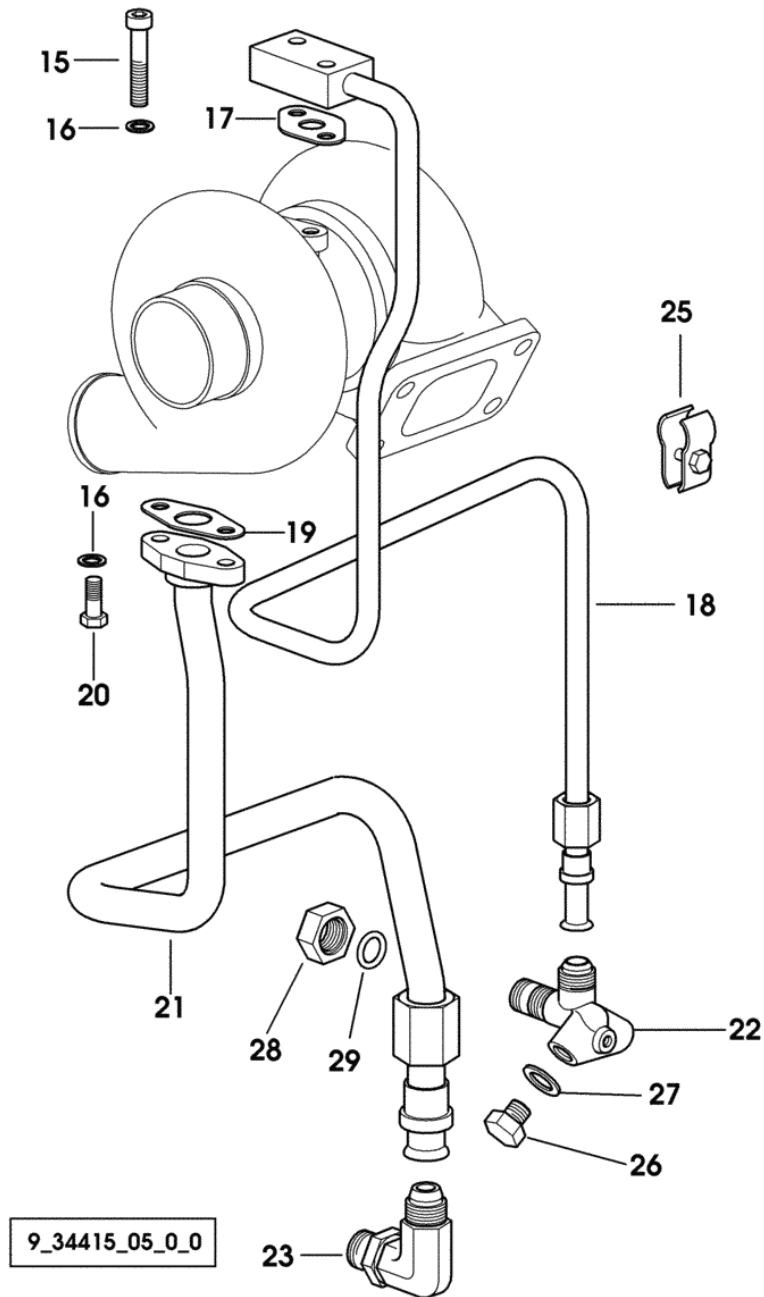


Fig.	Code	QTY	Name
15	2.0112.213.2	2	screw m 8 p.1.25 x 35
16	2.1470.004.2	4	washer 8
17	0.052.1557.0	1	gasket
18	0.007.0788.2	1	tube
19	0.052.1558.0/10	1	gasket
20	2.0112.207.2	2	screw m 8 p 1.25 x 20
21	0.007.0789.3	1	exhaust
22	2.3339.673.0/10	1	pipe fitting
23	2.3264.021.2	1	pipe fitting m 22 p.1.5 - 1" 1/16
25	0.007.1317.4	1	bracket
26	2.3110.403.1	1	plug m 14 p.1.5
27	2.1560.010.0	1	gasket 14.2 x 20 x 1.5
28	2.1019.129.2/10	1	nut m 18 p.1.5x12
29	2.1533.038.0	1	'o' ring 15.45x2.62

9_34415_05_0_0

P.T.O. - HYDRAULIC CLUTCH

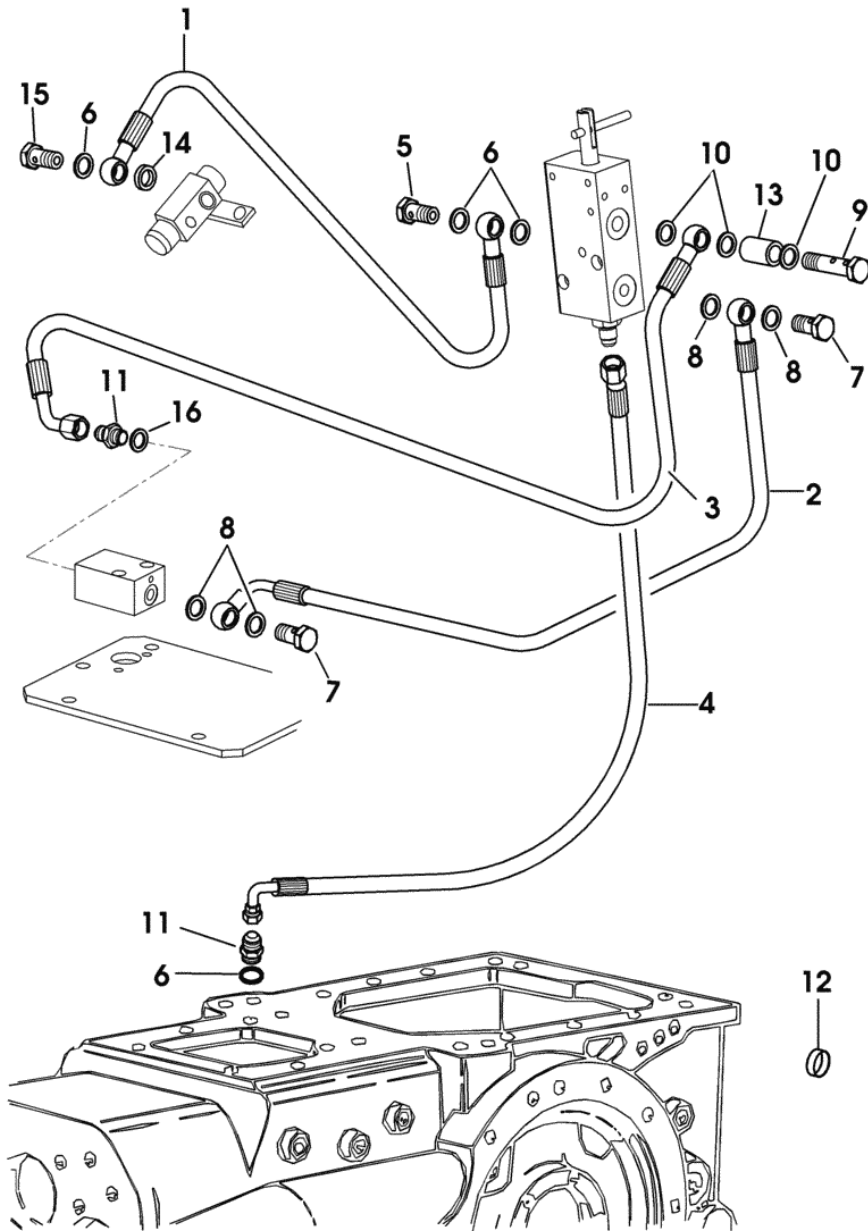


Fig.	Code	QTY	Name
1	0.012.6516.3	1	tube 3/16"
2	0.013.5522.3	1	tube 1/8"
3	0.013.5511.3	1	tube 5/16"
4	0.012.6517.3/20	1	tube 5/16"
5	2.3335.006.2	1	pipe union m 14 p.1.5x24
6	2.1560.010.0	4	gasket 14.2 x 20 x 1.5
7	2.3335.004.2	2	pipe union m 10 p.1
8	2.1560.006.0	4	gasket 10.2 x 16
9	2.3339.861.2	1	pipe union m 12 p.1.25x48
10	2.1560.008.0	3	gasket 12.2 x 18
11	2.3261.006.2	2	pipe fitting m 14 p.1.5-9/16"
12	2.3171.006.4	2	plug Ø 16
13	2.1579.721.2	1	spacer 12.5x20x22
14	2.1569.190.0	1	gasket 14x20x8
15	2.3335.053.2	1	pipe union m 14 p.1.5x30
16	2.1560.010.0	1	gasket 14.2 x 20 x 1.5

9_18739_01_0_0

KRYPTON 100 -> 2001

GEAR

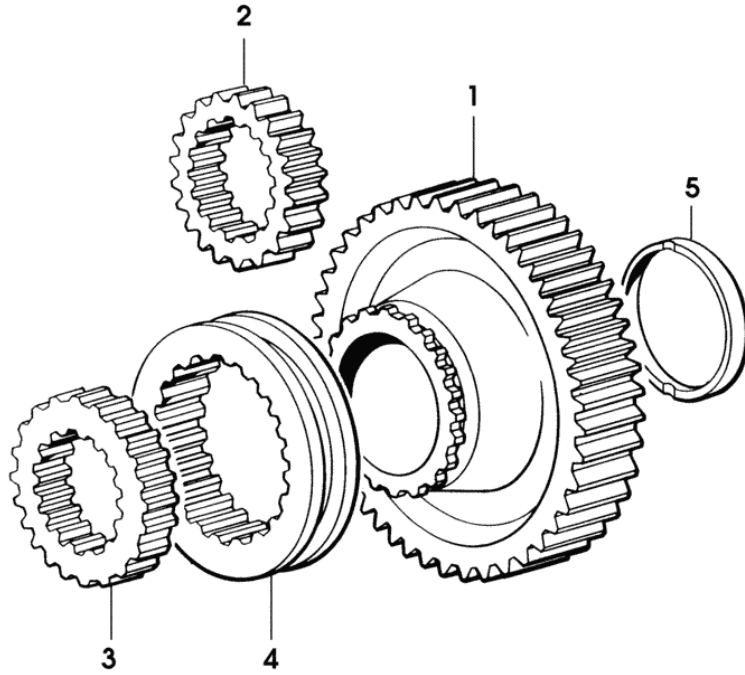
GENERAL

CLUTCH 13".....	02.00.1
CLUTCH CONTROL.....	02.00.2
CLUTCH CONTROL.....	02.00.3
GEARBOX.....	02.00.4
GEARBOX TO CLUTCH SHAFT.....	02.00.5
GEARBOX TO CLUTCH SHAFT.....	02.00.6
MAIN SHAFT.....	02.00.7
TRANSMISSION SHAFT.....	02.00.8
REDUCTION GEAR UNIT.....	02.00.9
UNDERDRIVE.....	02.00.10
SUPER REDUCTION GEAR UNIT.....	02.00.11
GEARSHIFT AND REVERSING GEAR UNIT CONTROL.....	02.00.12
GEARSHIFT LEVER.....	02.00.13
REVERSE GEAR CONTROL.....	02.00.14
EXTERNAL CONTROLS FOR SUPER- AND MINI-REDUCTION	02.00.15
DRIVE - INTERMEDIATE GEARS.....	02.00.16
CONTROLS-SUPER REDUCTION.....	02.00.17
INTERNAL CONTROLS FOR SUPER- AND MINI-REDUCTION.....	02.00.18
DIFFERENTIAL BEVEL GEAR PAIR.....	02.00.19

Section: GEAR

REDUCTION GEAR UNIT

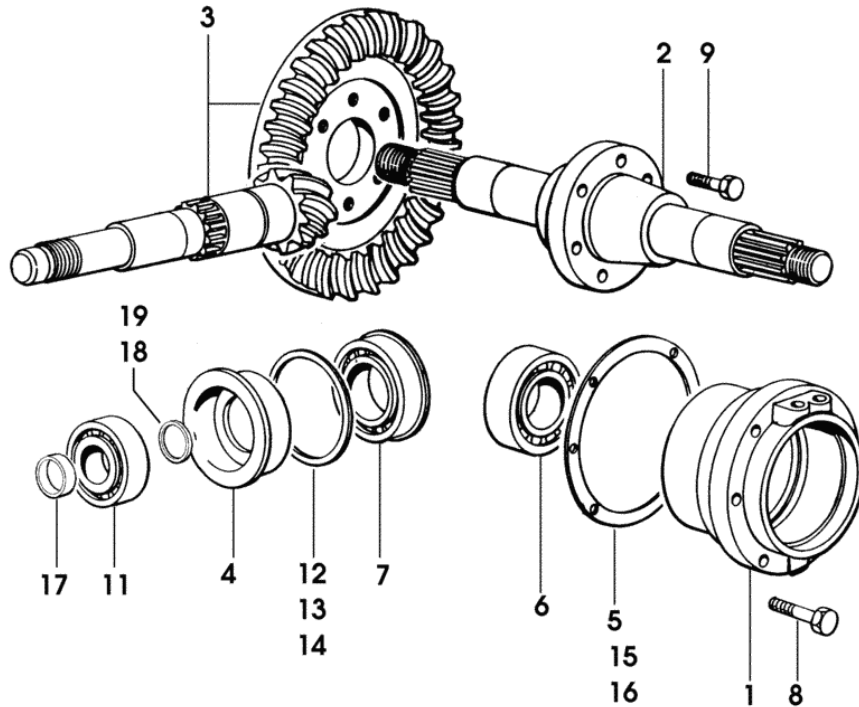
Fig.	Code	QTY	Name
1	0.292.3421.0	1	gear z=42
2	0.292.3420.0	1	gear Z = 20
3	0.292.3450.0	1	sleeve
4	0.292.3451.0	1	sleeve
5	2.1549.130.0	1	spacer



9_48334_00_0_0

DIFFERENTIAL BEVEL GEAR PAIR

Fig.	Code	QTY	Name
1	0.292.3512.0/50	2	support
2	0.292.3515.0/10	1	shaft Ø 44.5 / Z = 16
3	0.012.2102.3/10	1	bevel gear
4	0.007.9324.0	1	ring
5	0.292.3551.0/20	4	shim mm 0,3
6	2.2520.012.0	2	roller bearing 55 x 100 x 22.75
7	2.2999.183.0	1	bearing 50 x 105 x 32
8	2.0112.413.2	12	screw m 12 p.1.75x35
9	2.0139.024.2	12	screw m 14 p.1.5x40
11	2.2560.006.0	1	roller bearing 40 x 90 x 25.25
12	2.1589.168.0	2	snoulder 105 x 112 x 0.1
13	2.1589.169.0	2	snoulder 105 x 112 x 0.5
14	2.1589.167.0	2	snoulder 105 x 112 x 0.15
15	0.292.3552.0/20	4	shim mm 0,5
16	0.292.3553.0/20	4	shim mm 0,7
17	2.1559.228.0	1	bushing 35 x 40 x 20.5
18	2.1599.846.0	1	shim 35.5 x 48 x 4
19	2.1599.845.0	1	shim 35.5 x 48 x 3.975



9_18835_00_0_0

KRYPTON 100 -> 2001

S.A.C.

GENERAL

S.A.C. CASE.....	0D.00.1
S.A.C. CASE.....	0D.00.2
LIFTING.....	0D.00.3
REGULATING DISTRIBUTOR.....	0D.00.4
INTERNAL CONTROLS.....	0D.00.5
INTERNAL AND EXTERNAL CONTROLS.....	0D.00.6
CONTROL KNOBS FOR EXTERNAL POWER LIFT CONTROLS.....	0D.00.7
SENSITIVE ELEMENTS.....	0D.00.8

STEERING CLUTCH

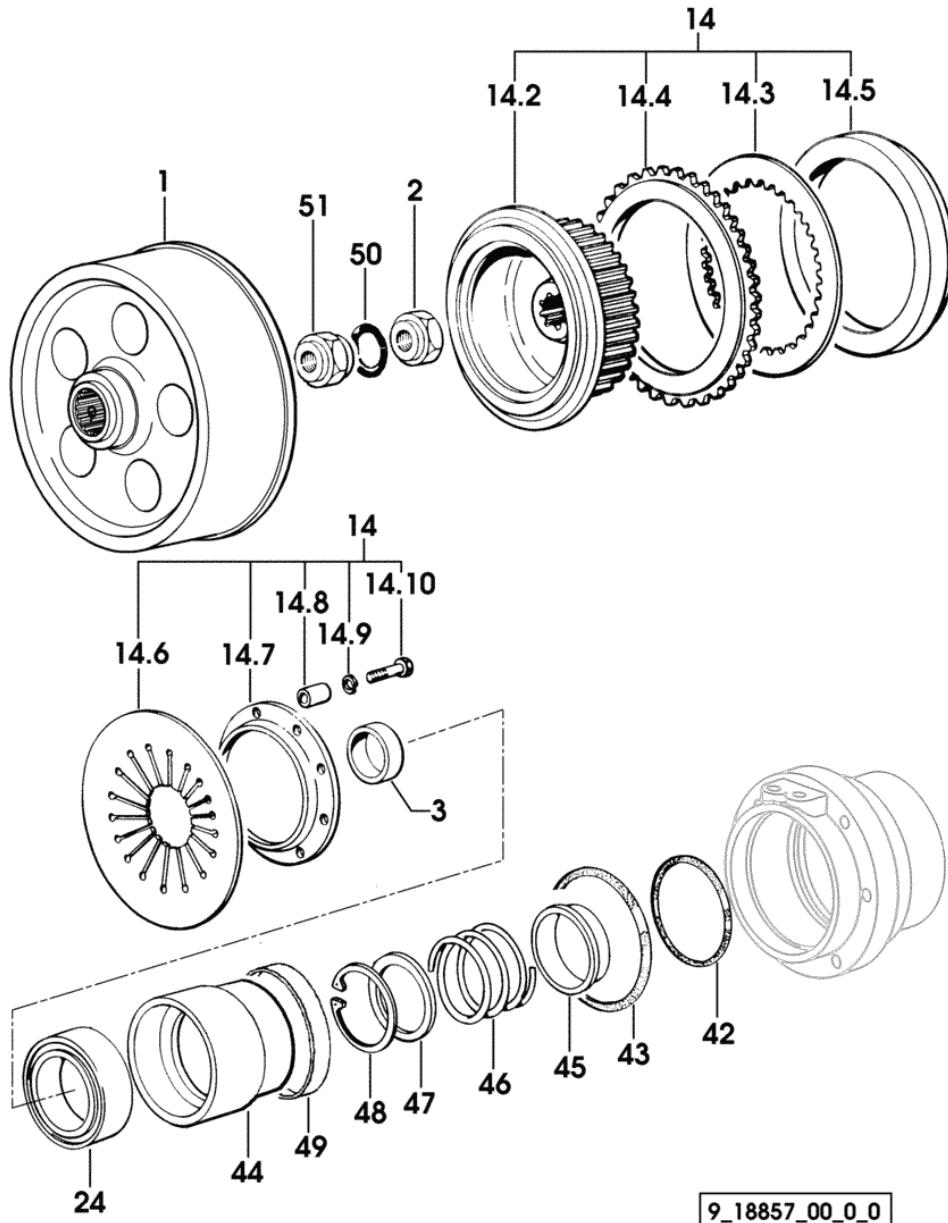


Fig.	Code	QTY	Name
1	0.011.7591.0/10	2	drum
2	2.1099.040.2/10	2	special nut m 34
3	2.1579.797.0	2	spacer 45x58x24.5
14	0.294.5711.4/20	2	steering clutch comp
14.2	0.292.5711.0	1	drum Ø 256, Z = 16/62
14.3	0.292.5715.0	10	disc
14.4	0.292.5714.0/10	10	friction ring
14.5	0.294.5713.0/10	1	pressure plate
14.6	0.292.5750.0/10	1	spring
14.7	0.292.5751.0/10	1	ring
14.8	0.292.5760.0	9	spacer
14.9	2.1470.002.2	9	washer 6, d128
14.10	2.0112.011.2	9	screw m 6 p.1x30
24	2.2999.201.0	2	bearing
42	2.1539.059.0	2	'o' ring 88.5x3.53
43	2.1539.058.0	2	'o' ring 107.5x3.53
44	0.292.6160.0/40	2	piston
45	0.292.6161.0	2	ring
46	2.4019.340.1	2	spring
47	2.1580.207.0	2	shim 66x79x0.5
48	2.1411.032.1	2	circlip 80 x 2.5
49	2.1539.203.0	2	'o' ring
50	2.1530.097.0	2	'o' ring 37.47x5.34
51	2.1219.063.7	2	ring nut

9_18857_00_0_0

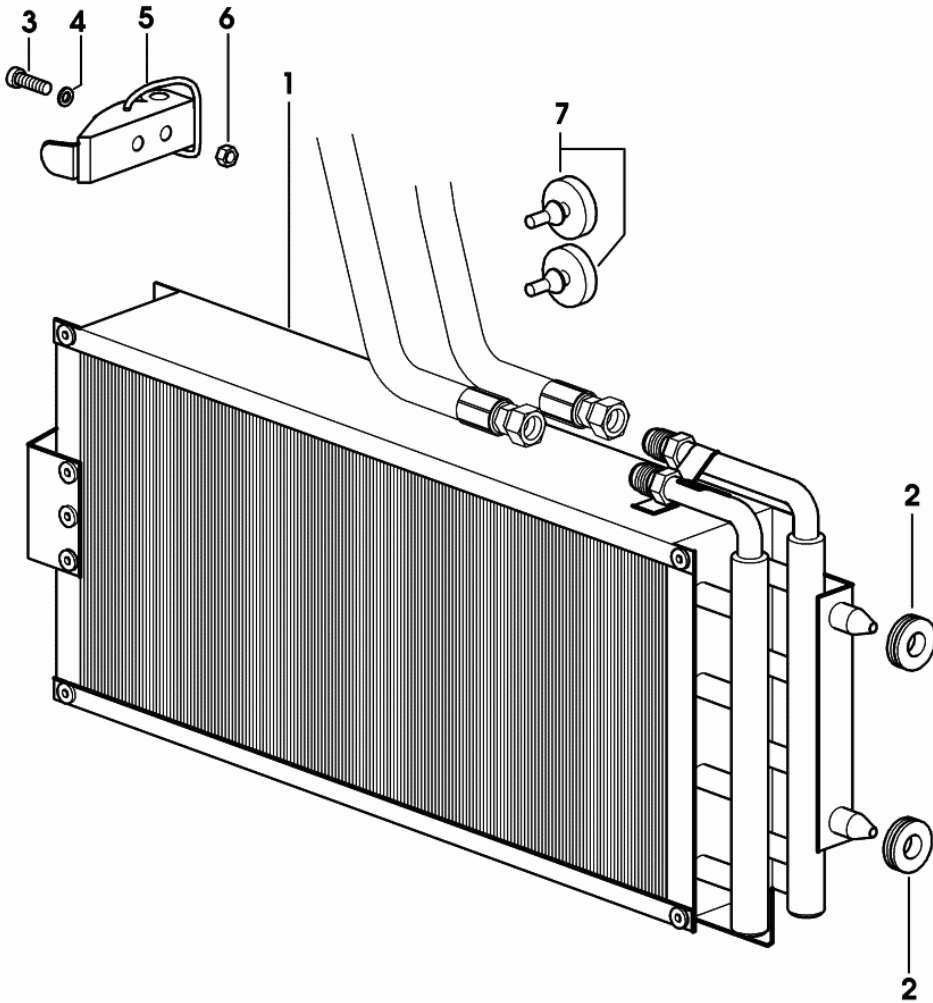
GEARBOX OIL COOLER

Fig.	Code	QTY	Name
------	------	-----	------

Notes:

-> 2040 X KRYPTON 90 -> 2125 X KRYPTON 100

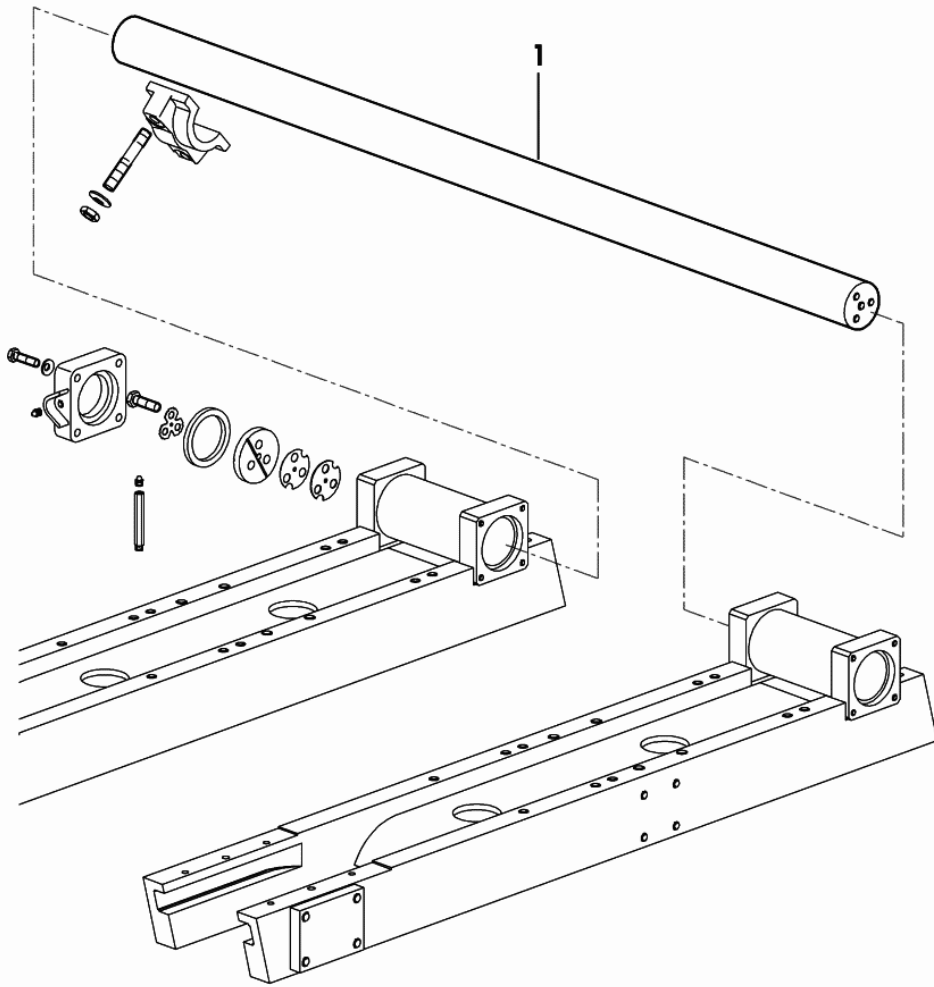
1	0.010.9570.2/10	1	oil cooler
2	2.6560.004.0	2	wire guide 10x2.5
3	2.0332.204.2	2	screw m 4x0.7x12
4	2.1470.052.2	2	lock washer 4
5	0.008.9632.0	1	clevis
6	2.1011.101.2	2	nut m 4 p.0.7
7	0.292.6157.0	2	rubber plug



9_D9482_01_0_0

Section: TRACK
CROSS BAR

Fig.	Code	QTY	Name
1	0.011.7921.0/20	1	rod Ø 75 / mm 1630



9_18791_02_0_0

CLICK HERE TO **DOWNLOAD** THE COMPLETE MANUAL

- Thank you very much for reading the preview of the manual.
- You can download the complete manual from: www.heydownloads.com by clicking the link below



- Please note: If there is no response to CLICKING the link, please download this PDF first and then click on it.

CLICK HERE TO **DOWNLOAD** THE COMPLETE MANUAL