

# Shop Manual

# H185S

## HYDRAULIC SHOVEL

**SERIAL NUMBER H185 6111**

This material is proprietary to Komatsu America Corp. and is not to be reproduced, used, or disclosed except in accordance with written authorization from Komatsu America Corp.

It is our policy to improve our products whenever it is possible and practical to do so. We reserve the right to make changes or improvements at any time without incurring any obligation to install such changes on products sold previously.

Due to this continuous program of research and development, revisions may be made to this publication. It is recommended that customers contact their distributor for information on the latest revision.

Copyright 2005 Komatsu  
Printed in U.S.A.  
Komatsu America Corp.

February 2005

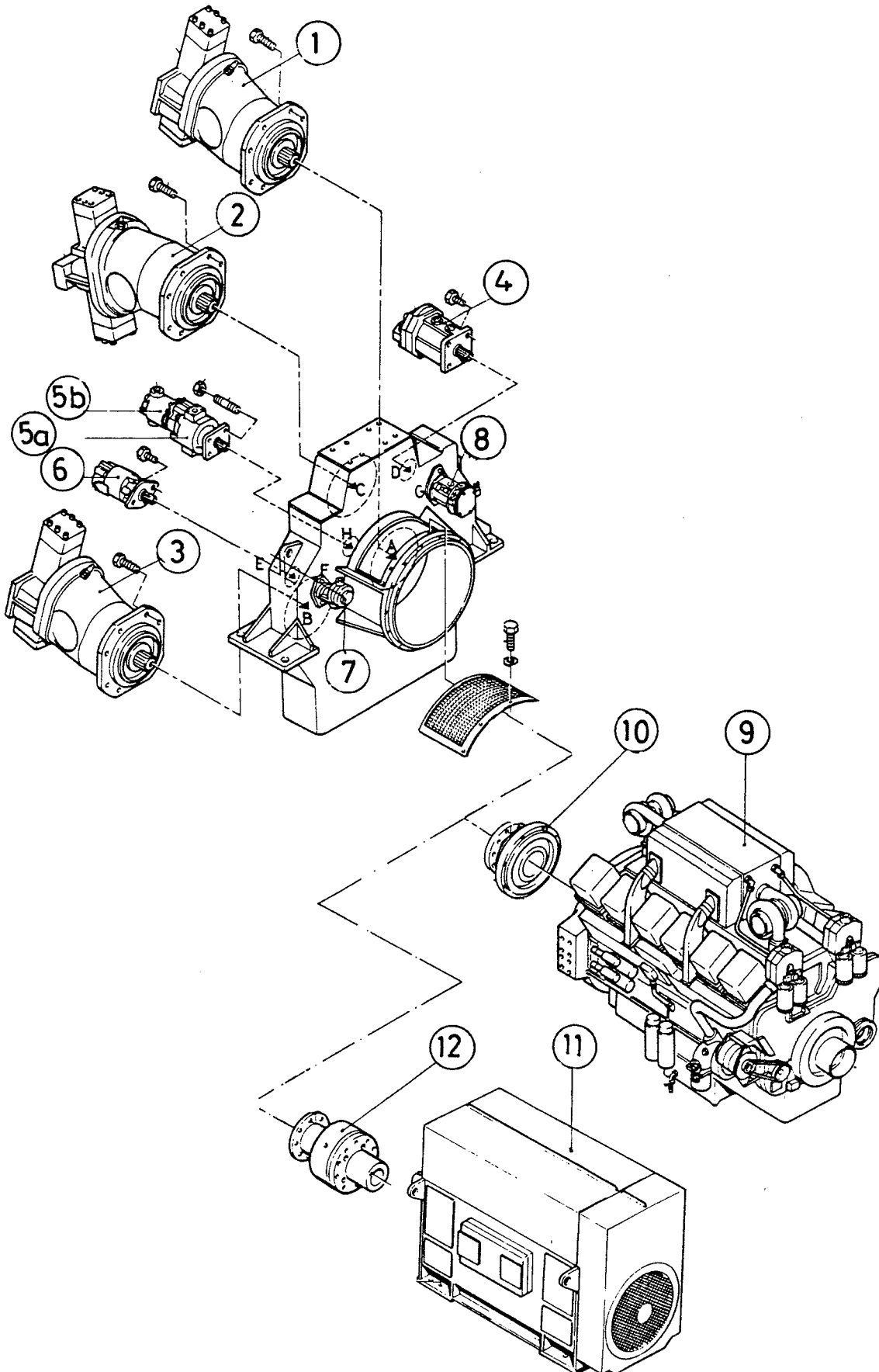
CLICK HERE TO **DOWNLOAD** THE COMPLETE MANUAL

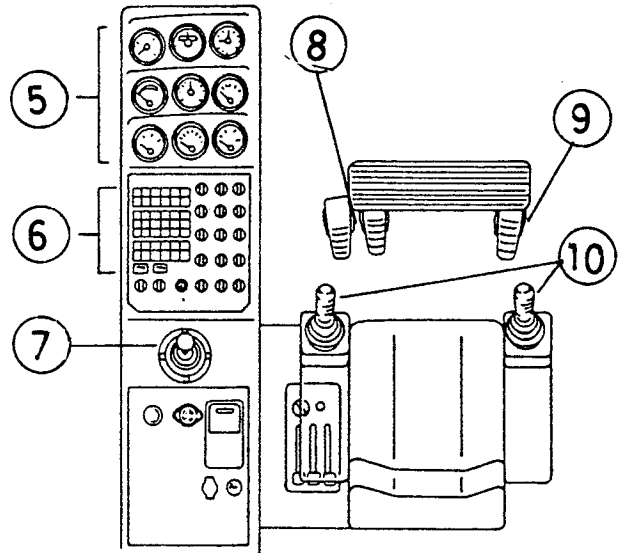
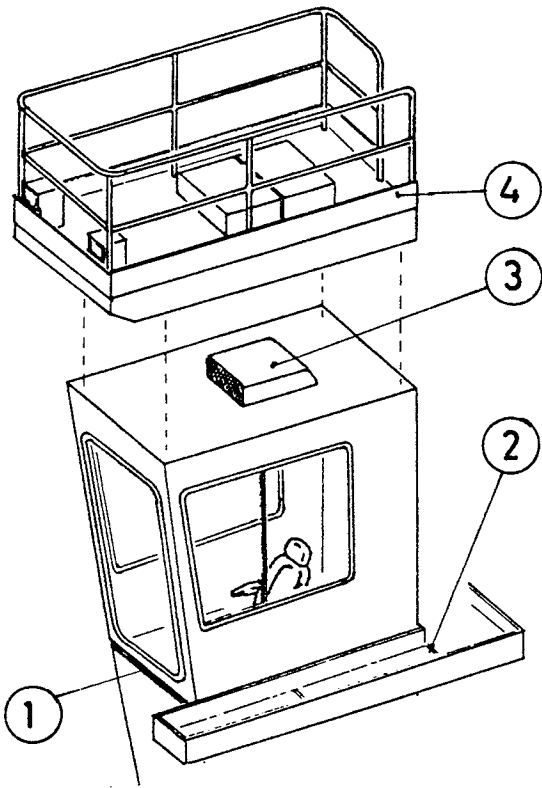
- Thank you very much for reading the preview of the manual.
- You can download the complete manual from: [www.heydownloads.com](http://www.heydownloads.com) by clicking the link below

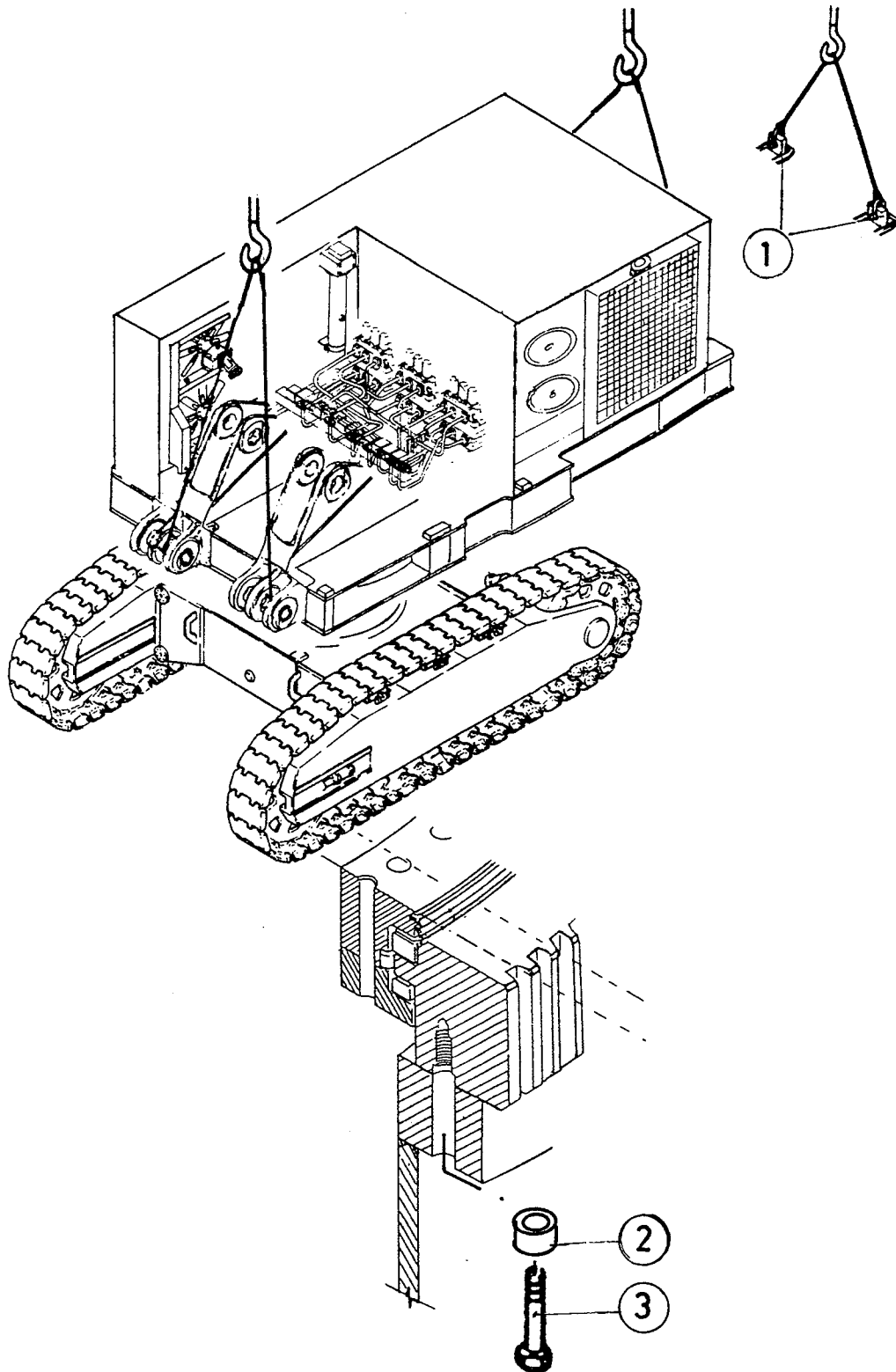


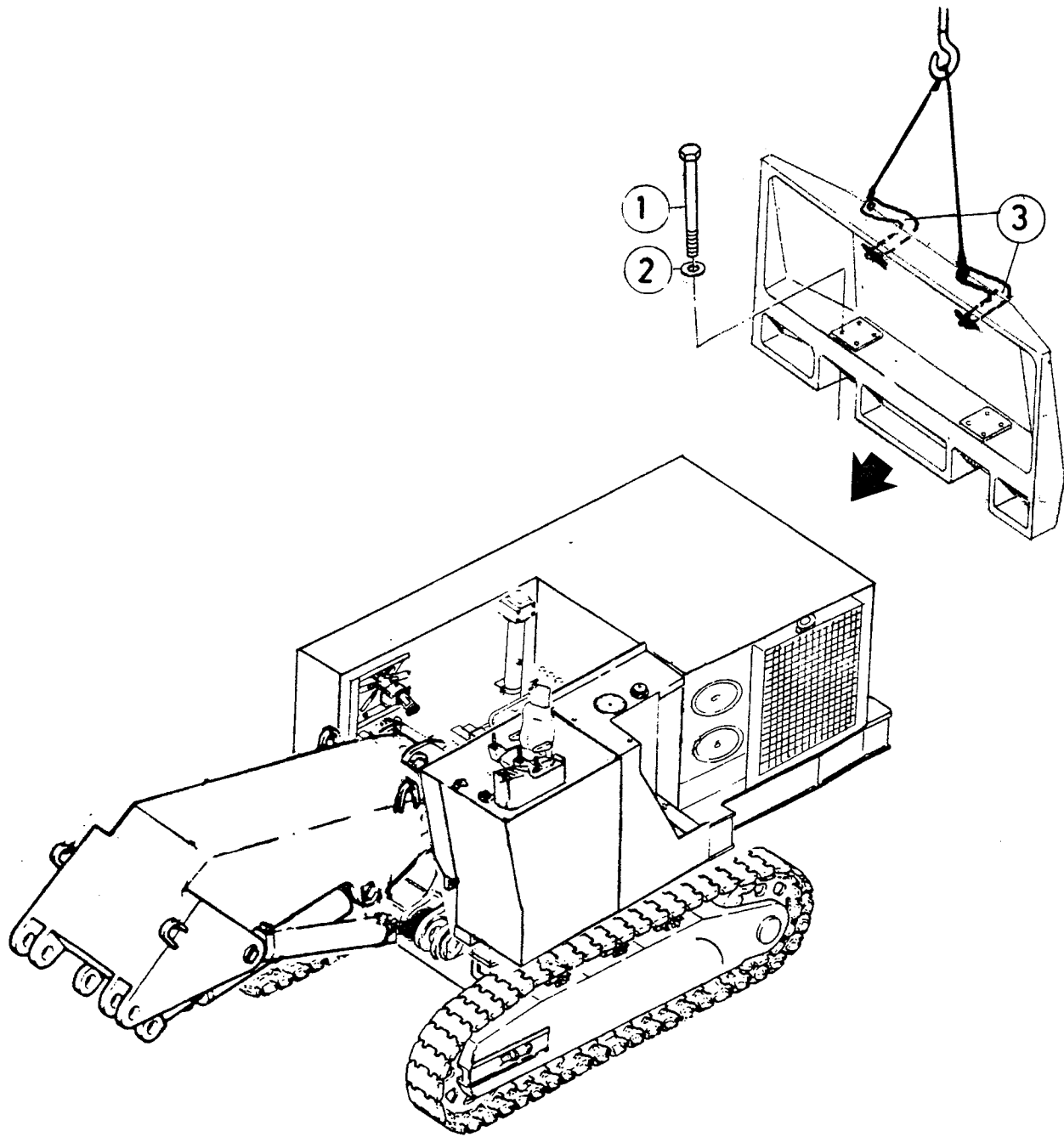
- Please note: If there is no response to CLICKING the link, please download this PDF first and then click on it.

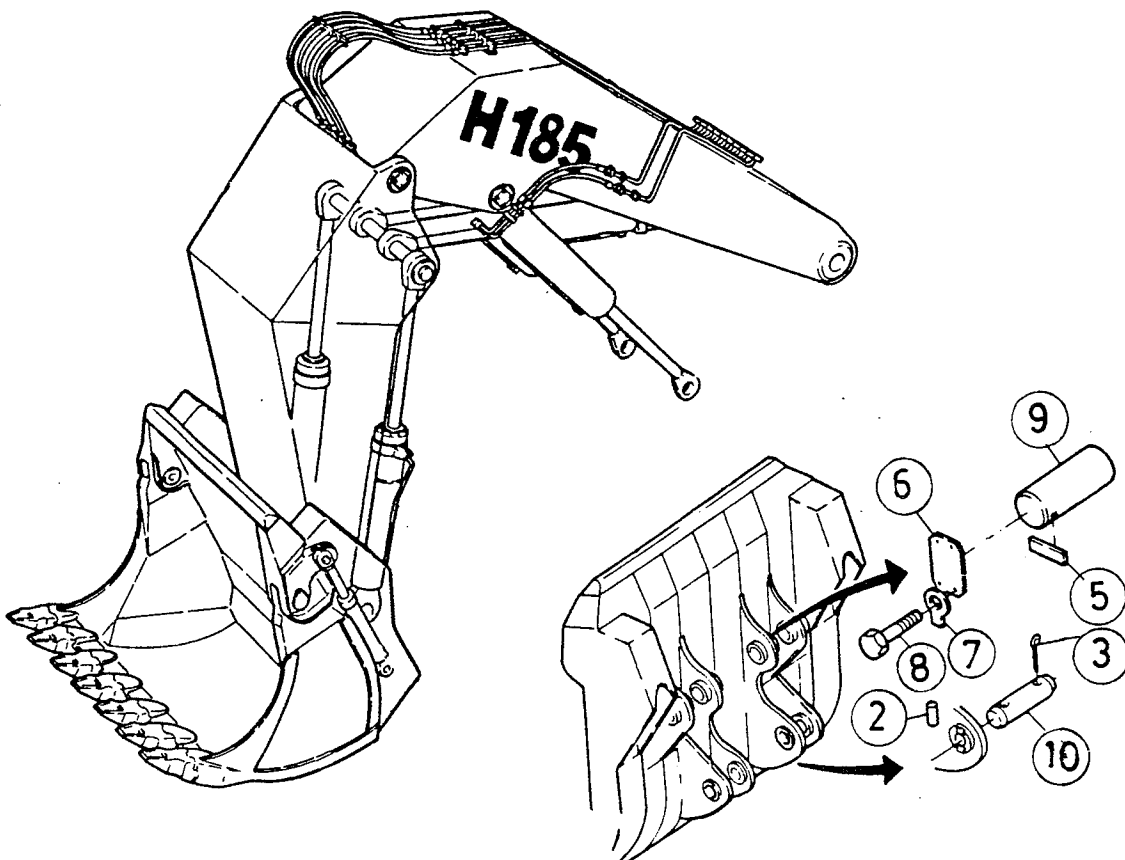
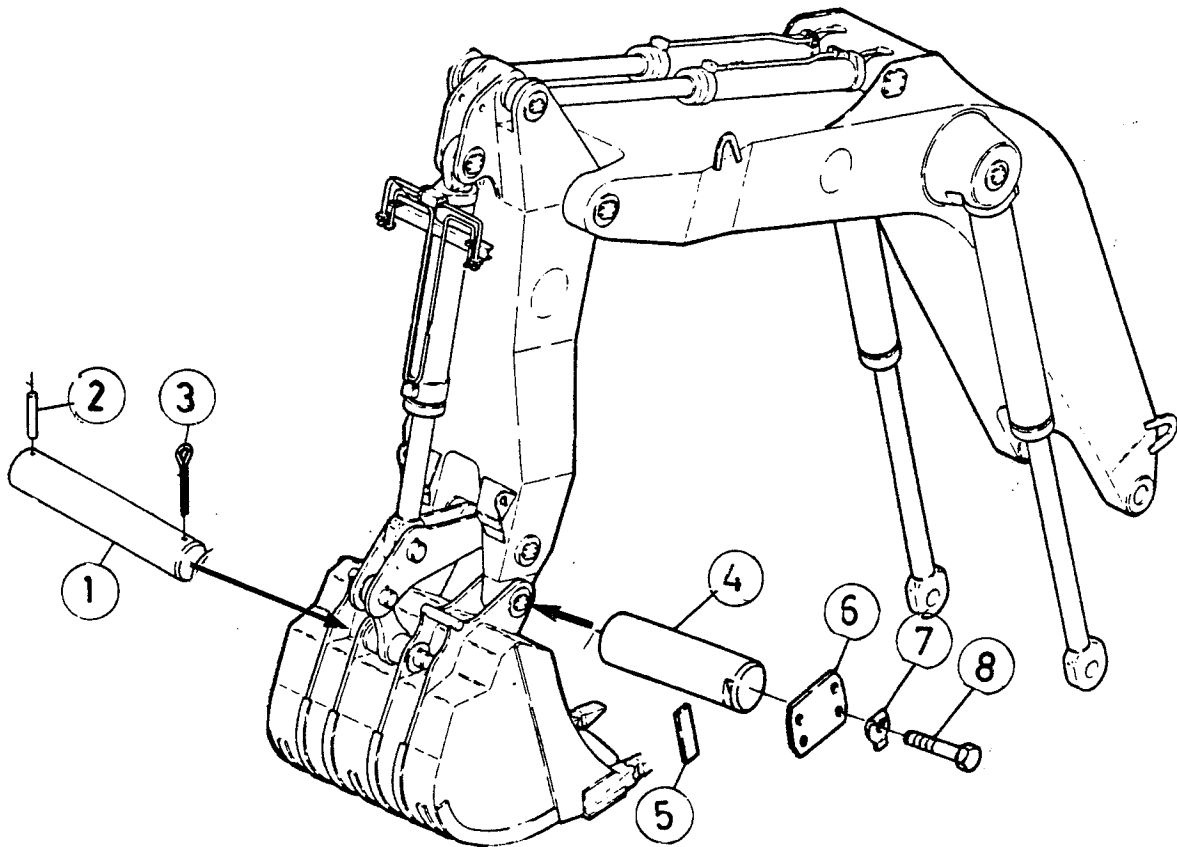
CLICK HERE TO **DOWNLOAD** THE COMPLETE MANUAL

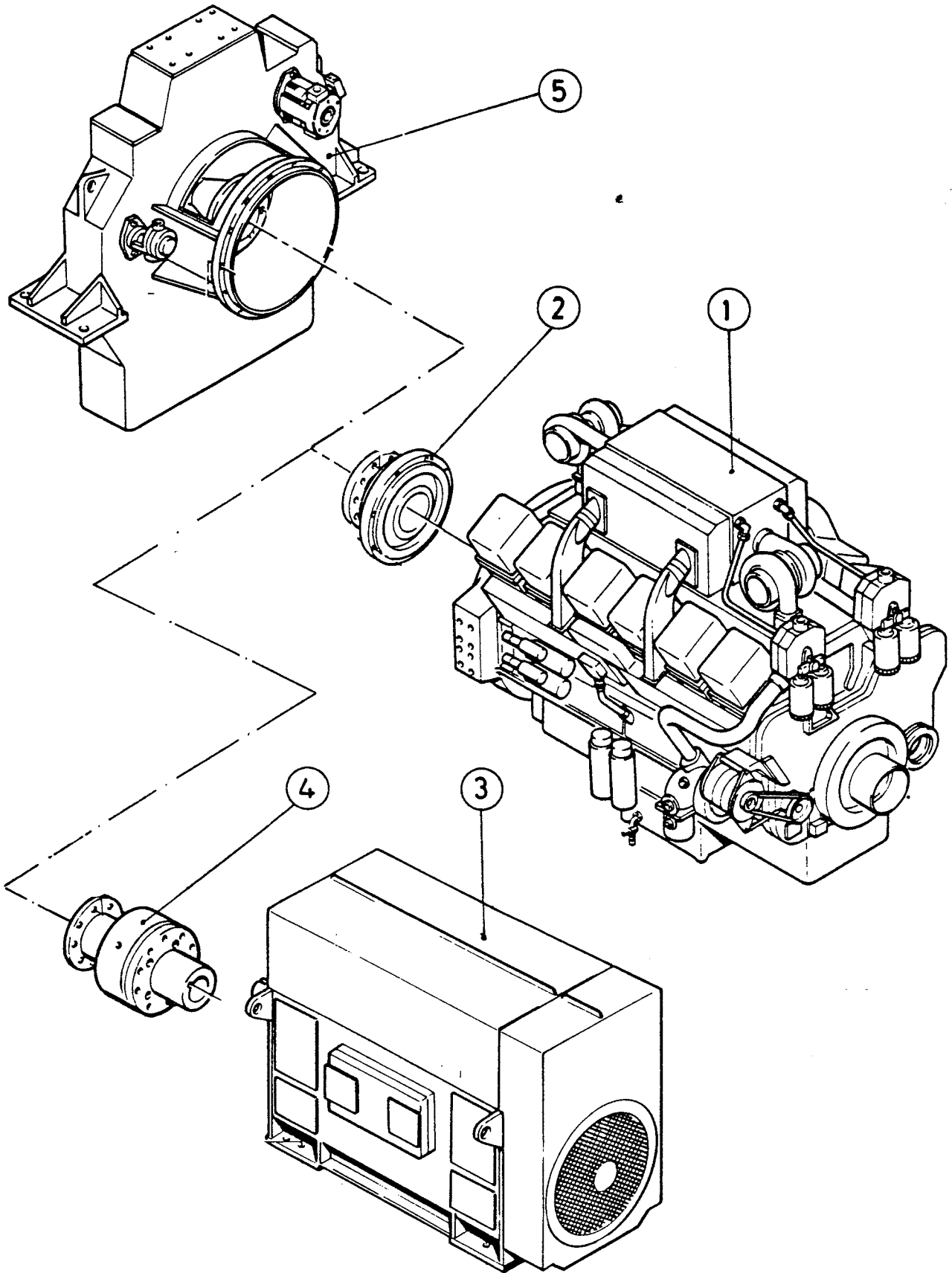




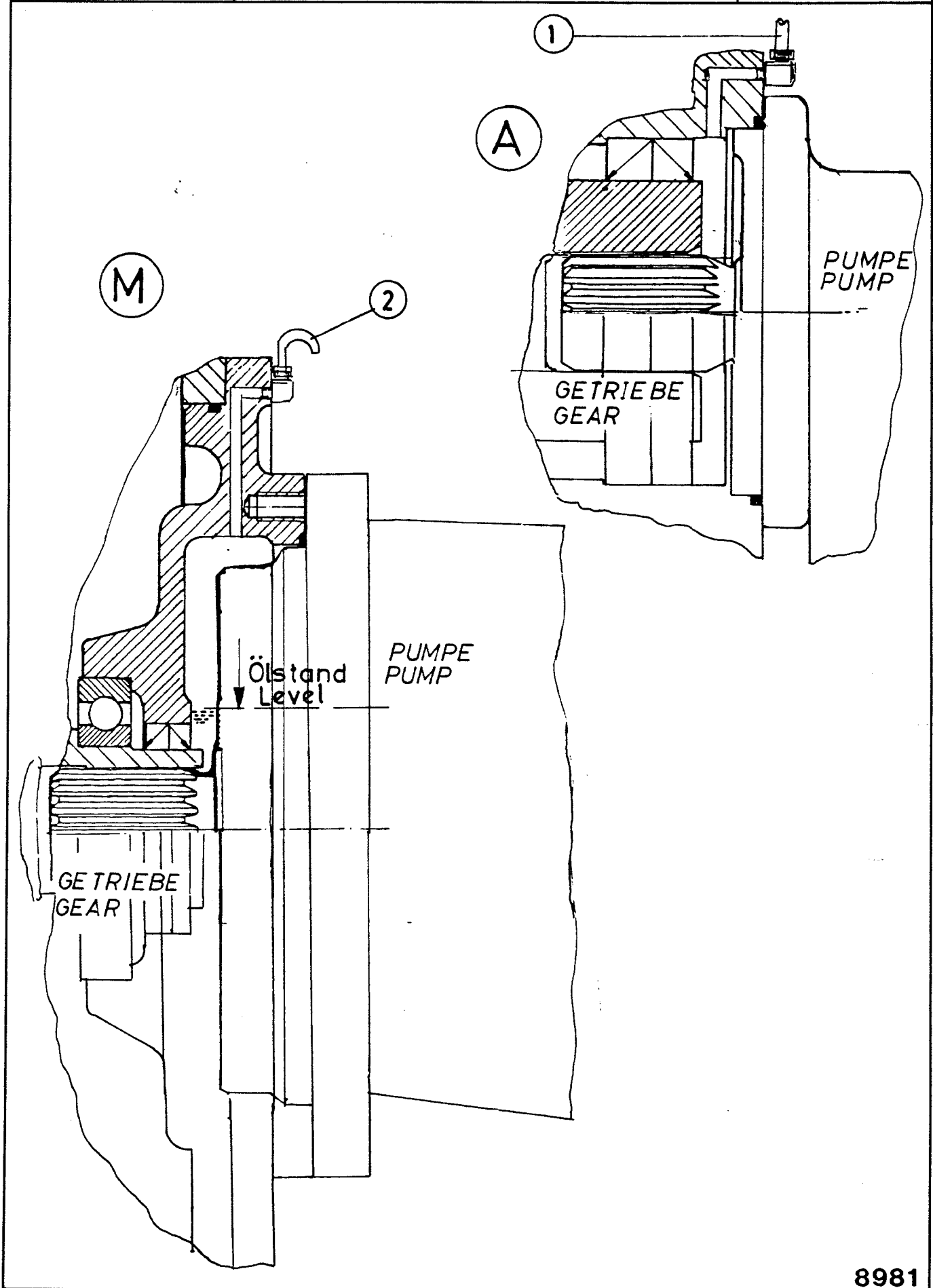


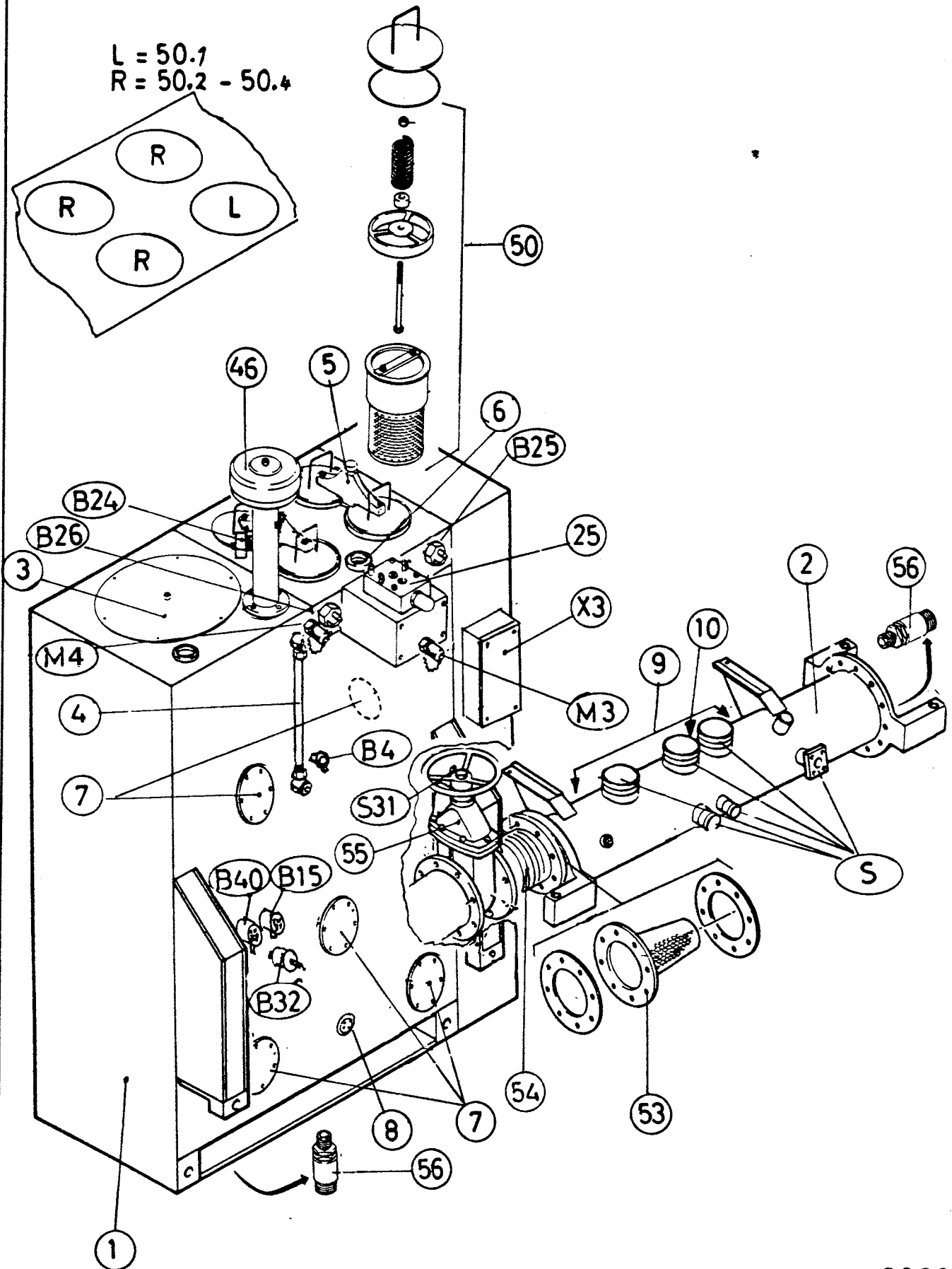


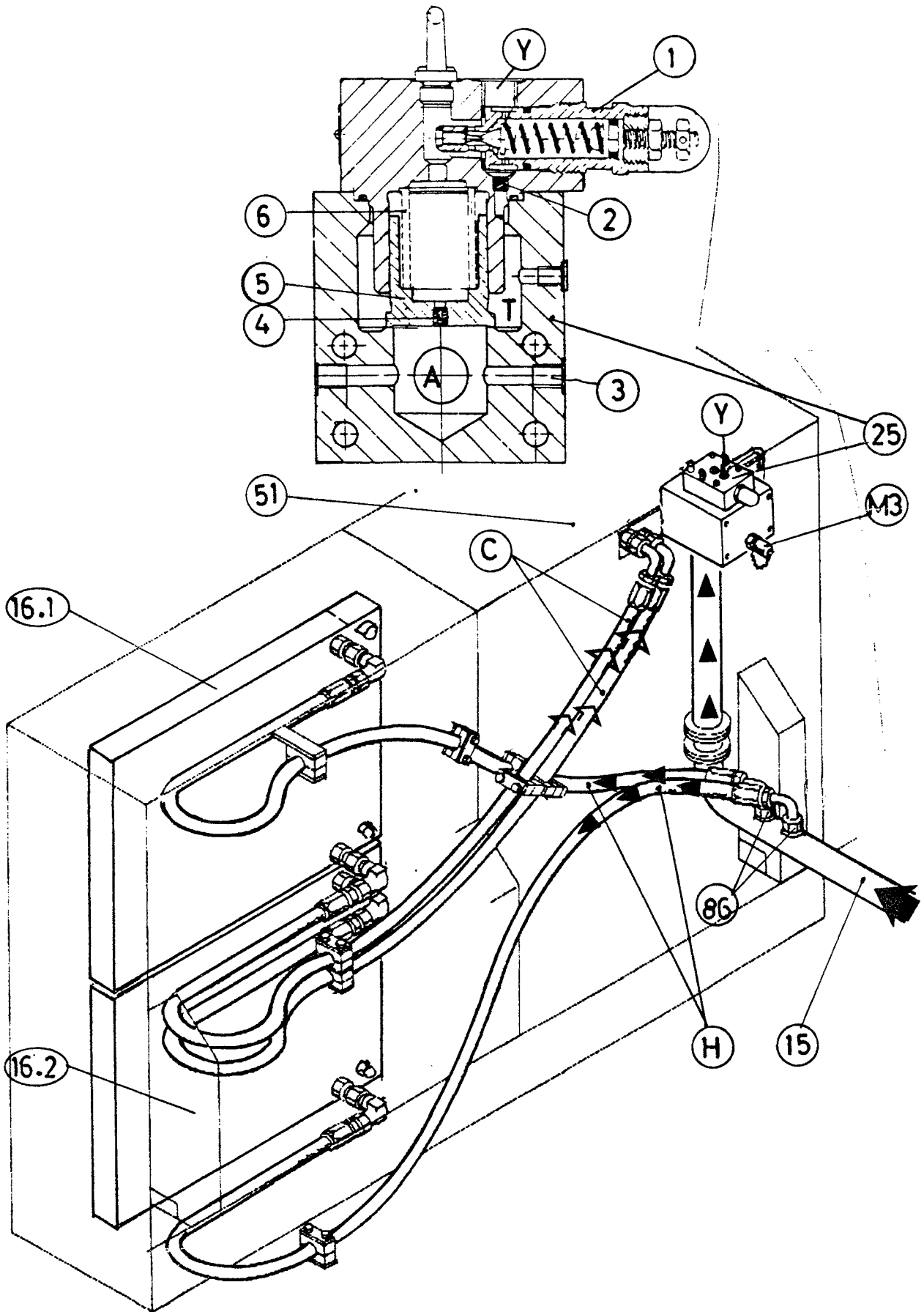


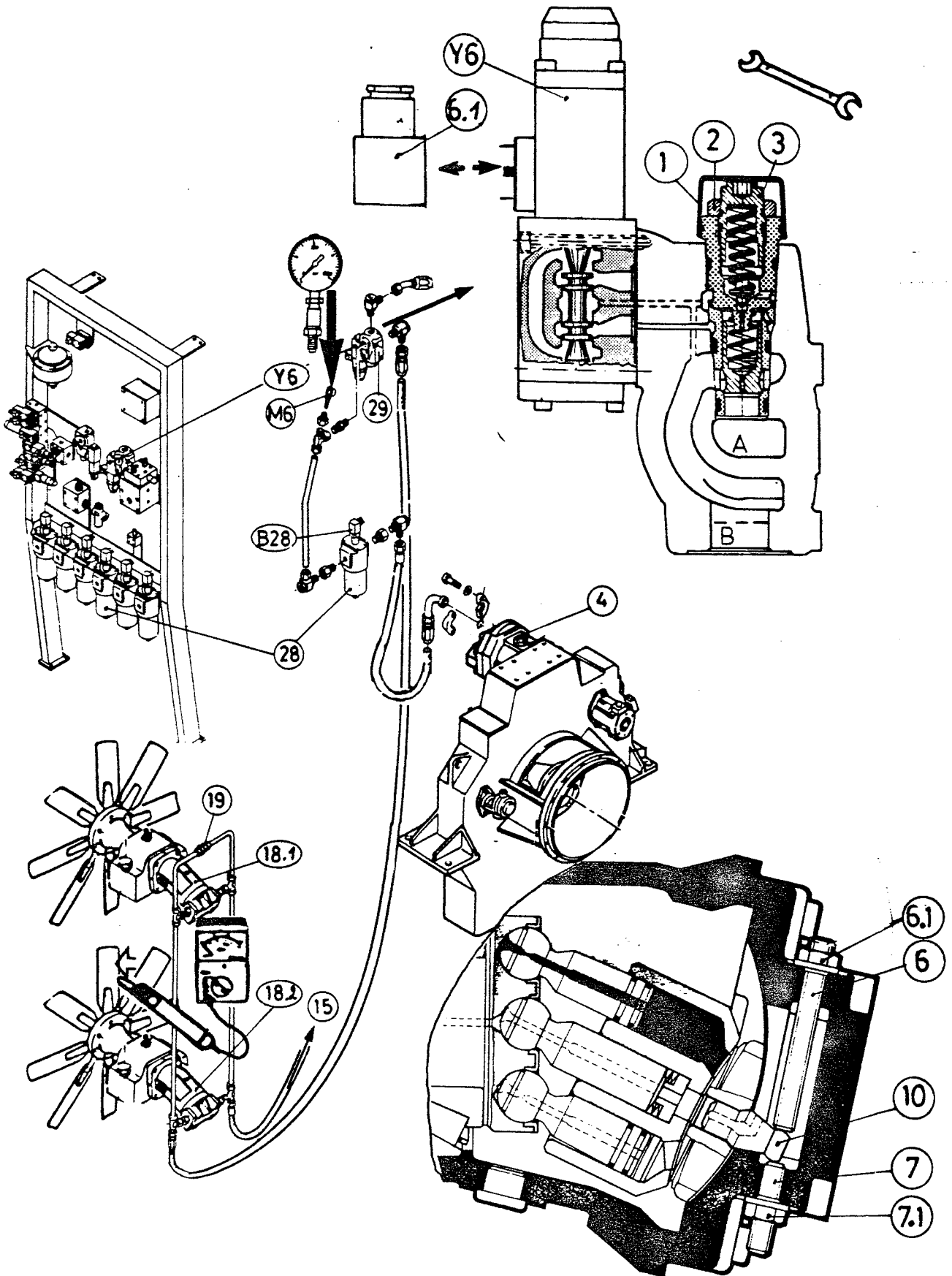


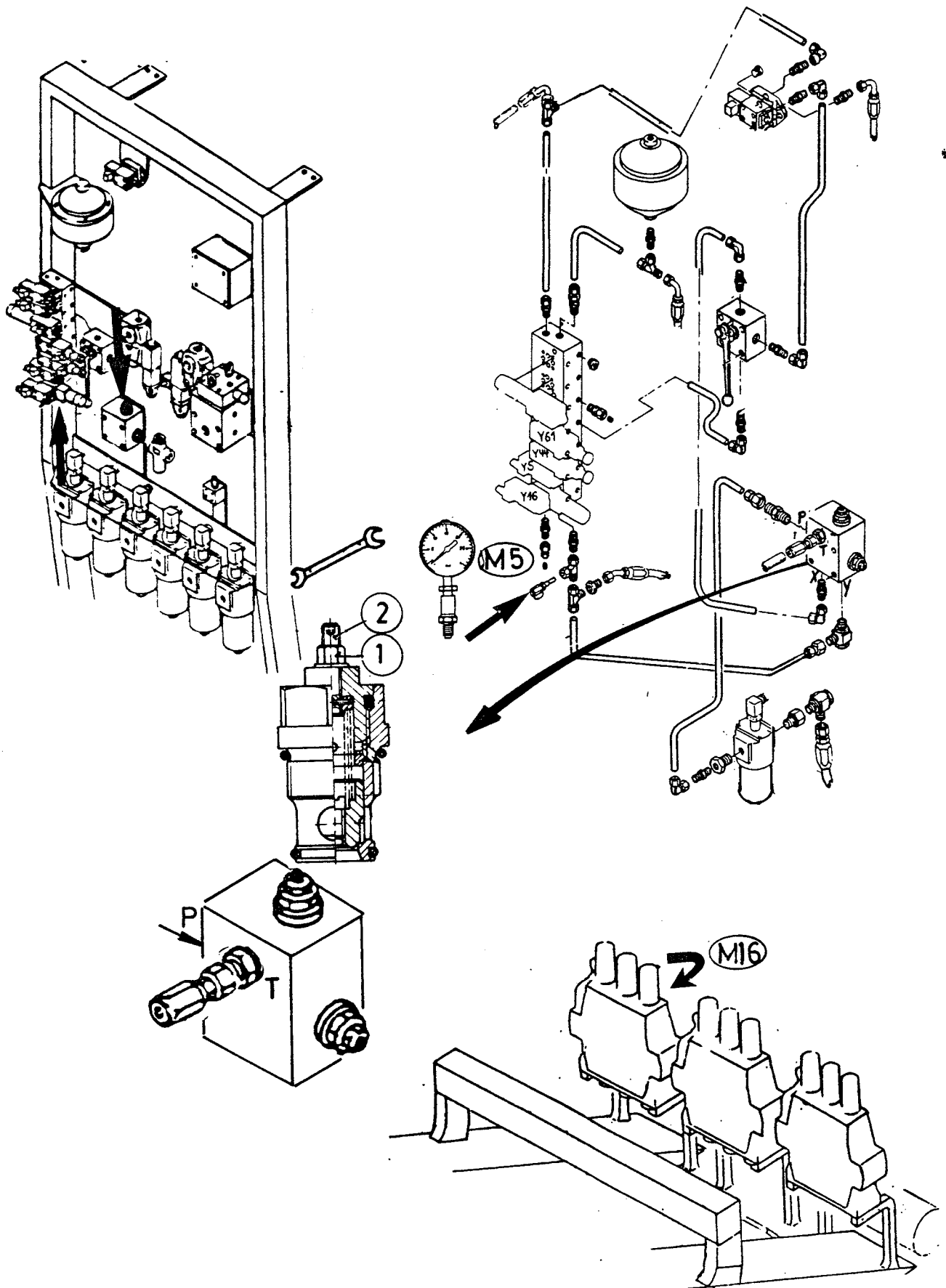










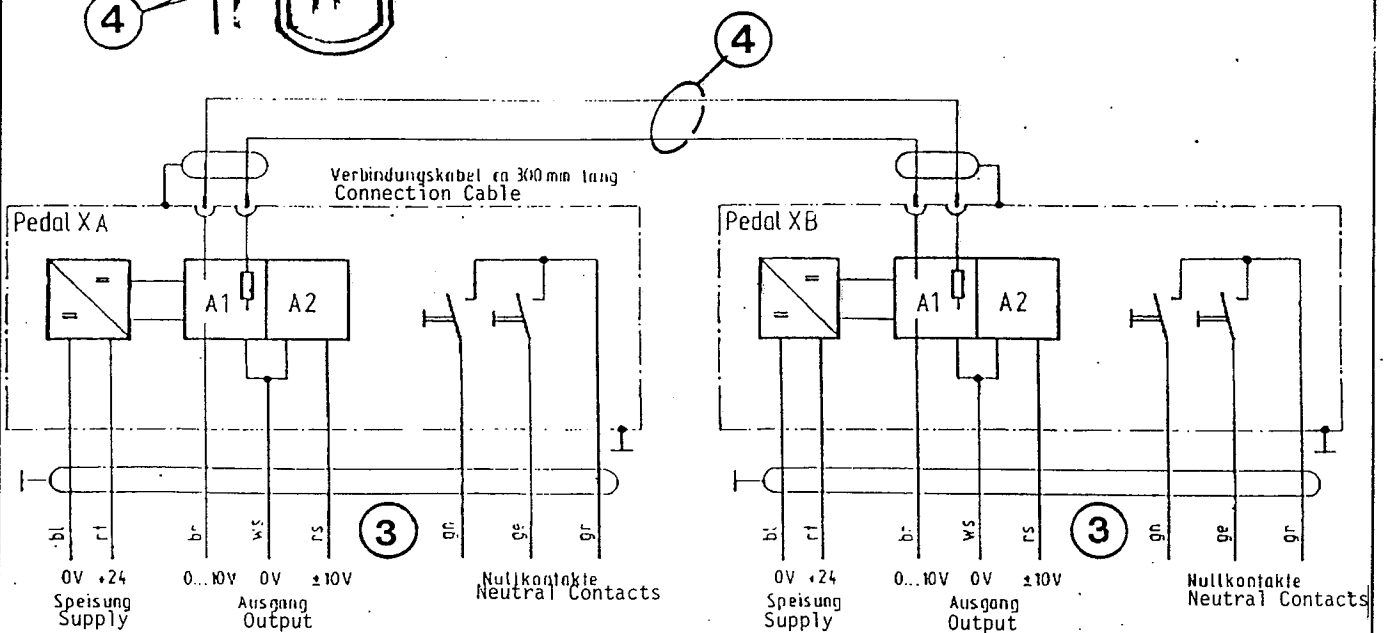
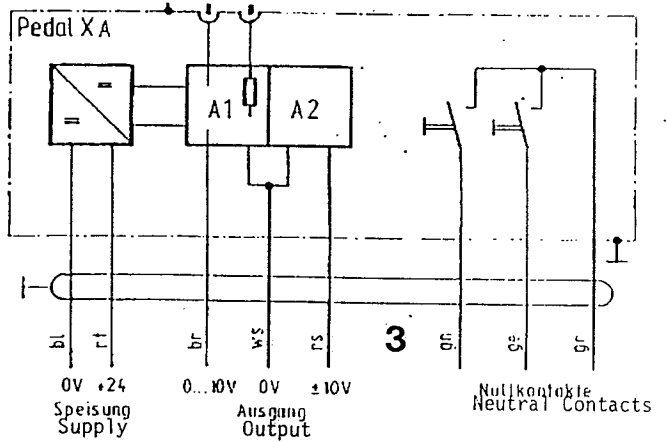
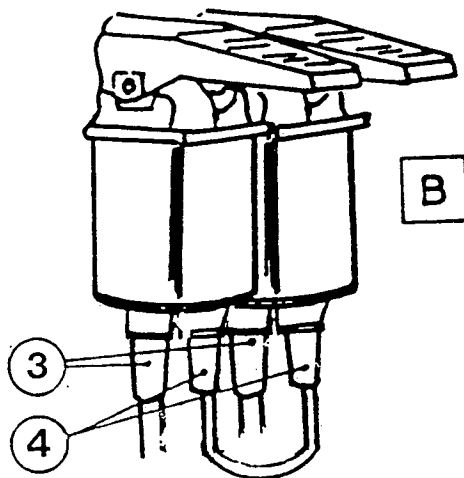
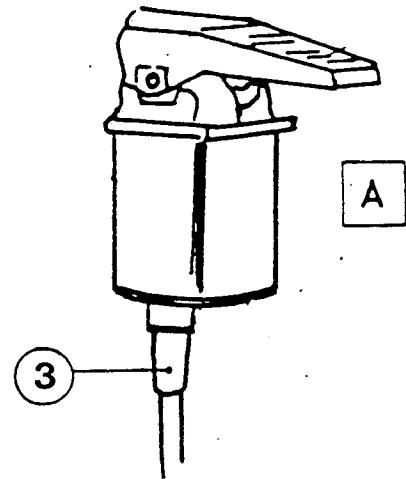
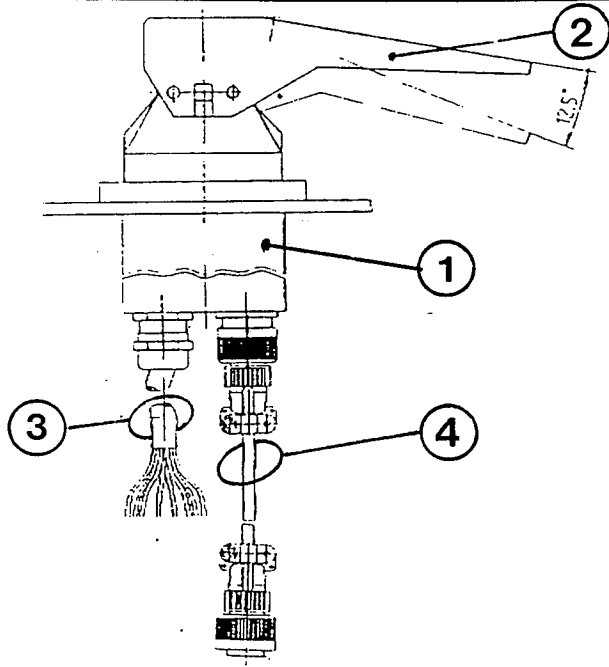


7001i-11-04

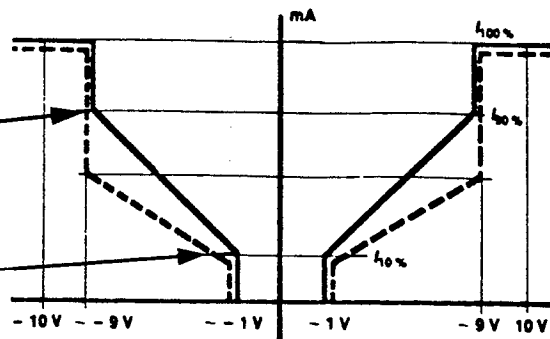
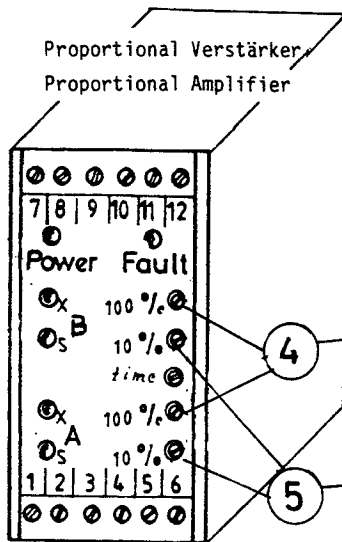
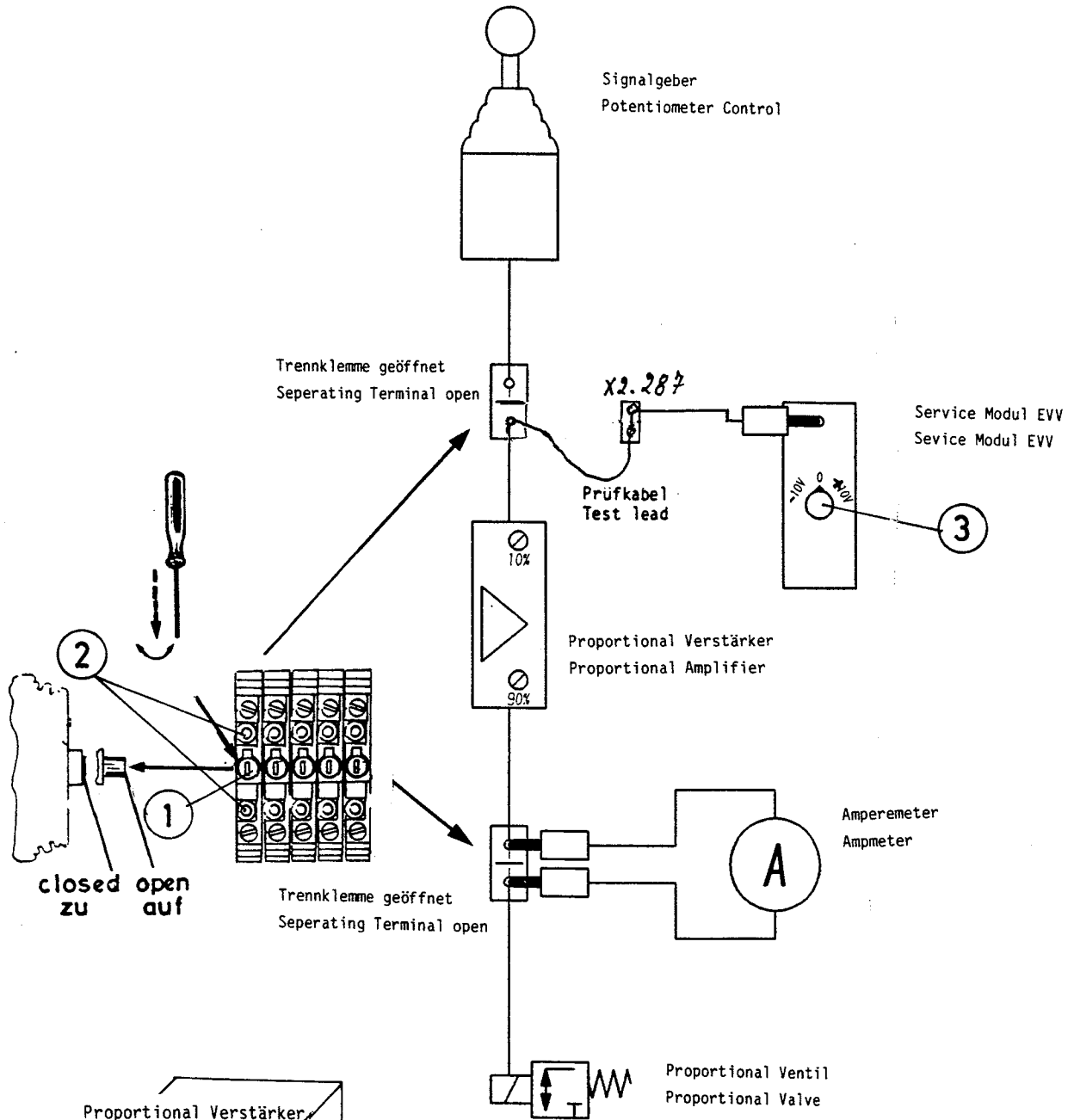
4.3

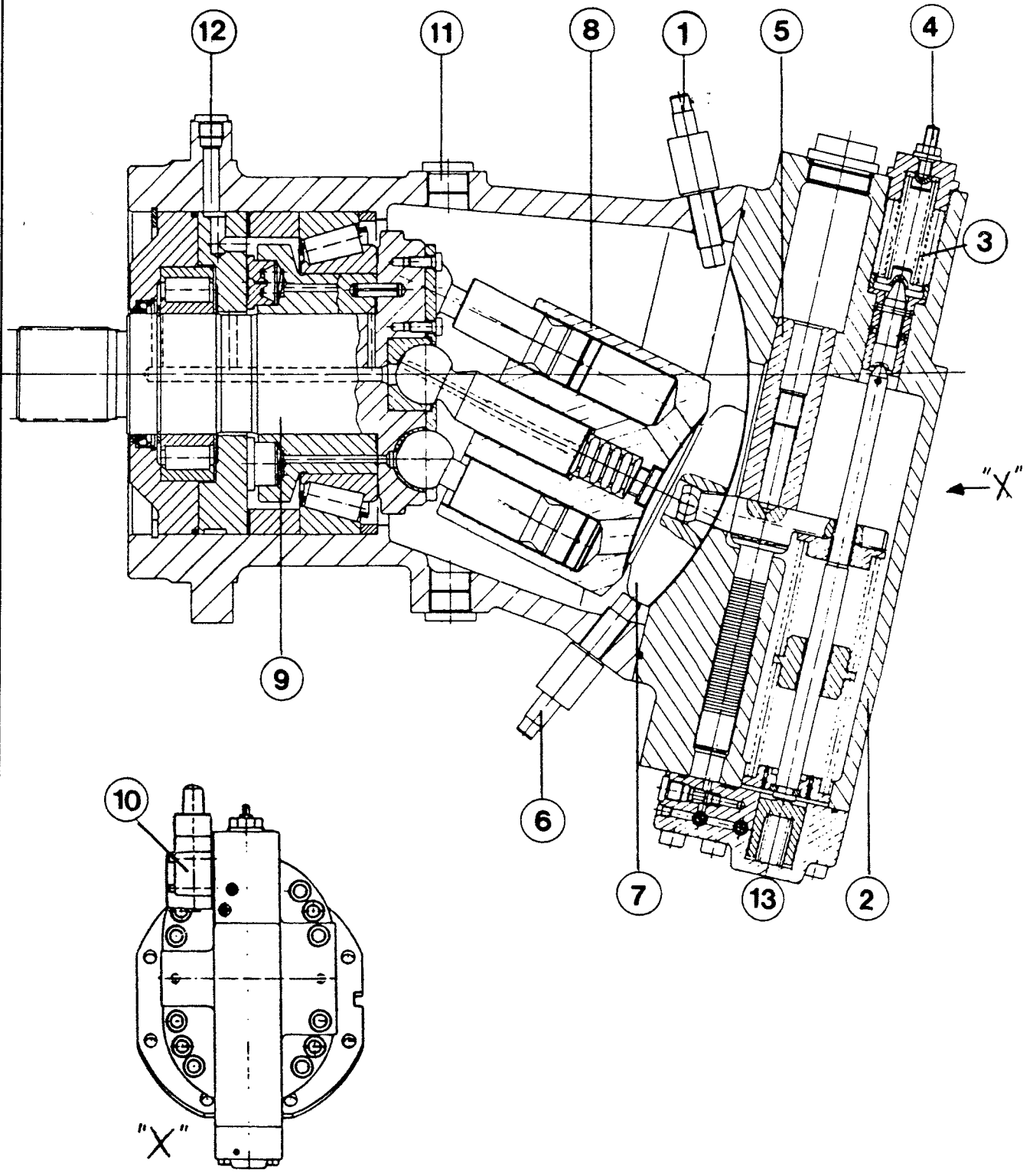
**MANNESMANN  
DEMAG**

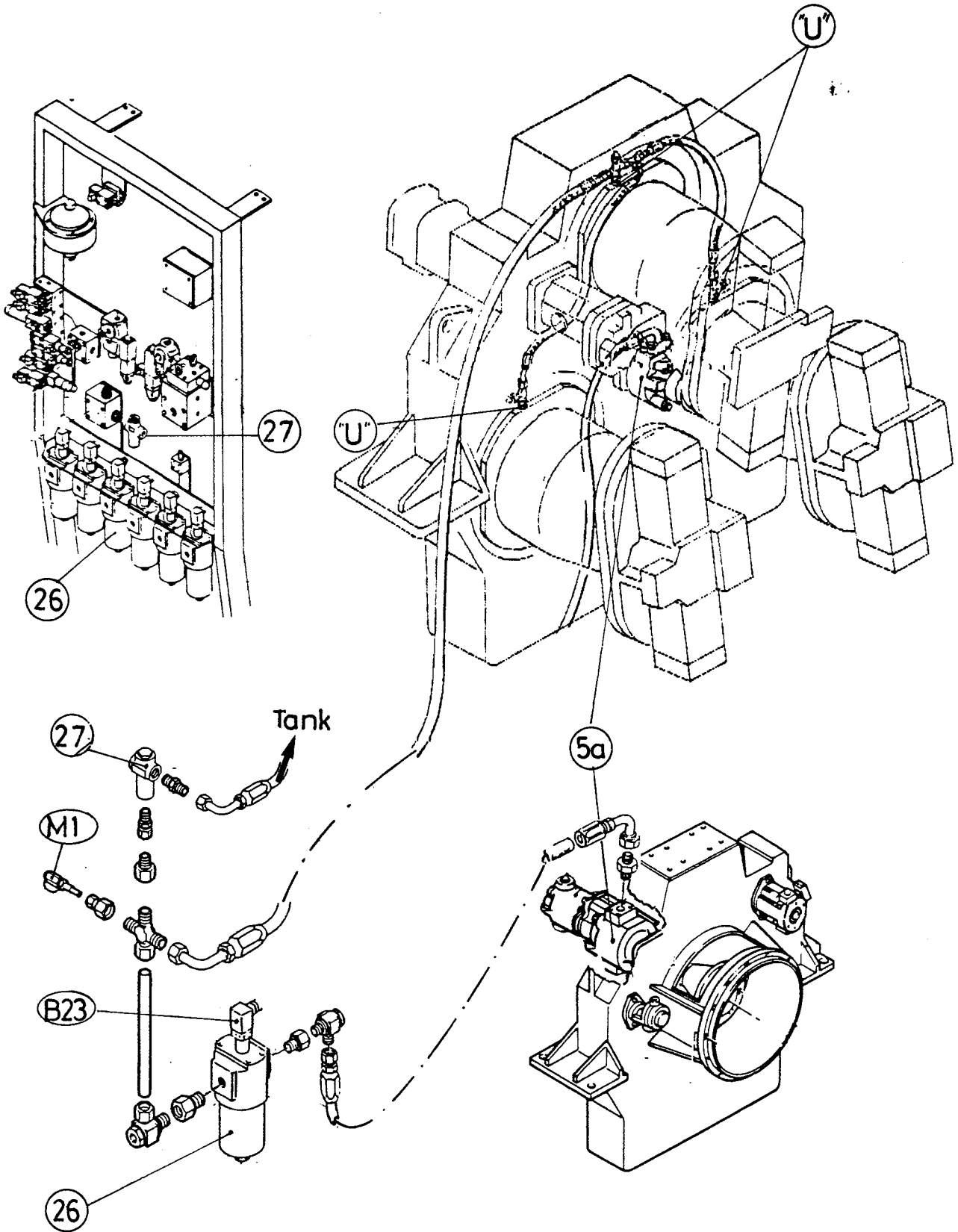
Baumaschinen  
Ersatzteile und Service

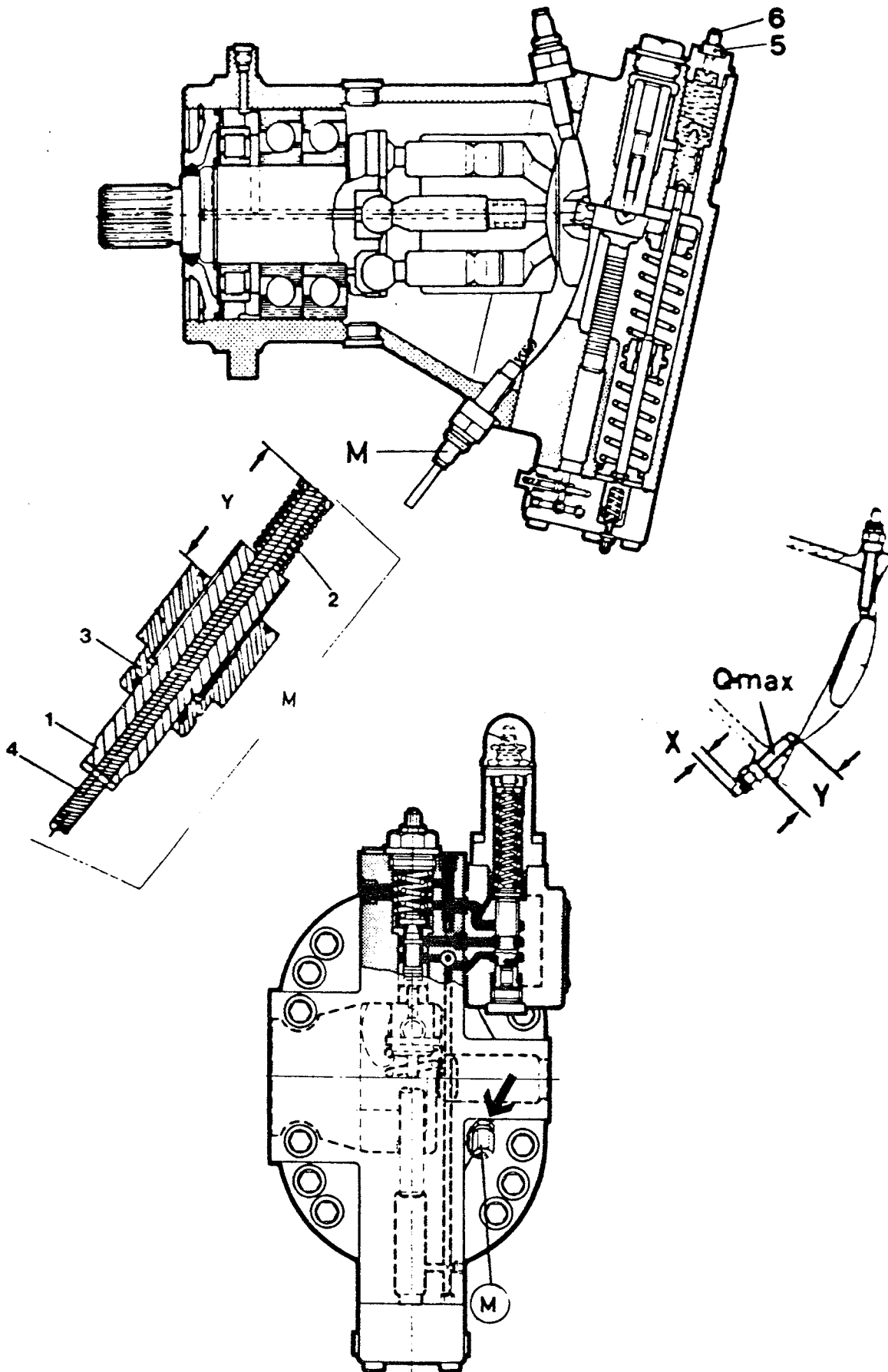


9001a





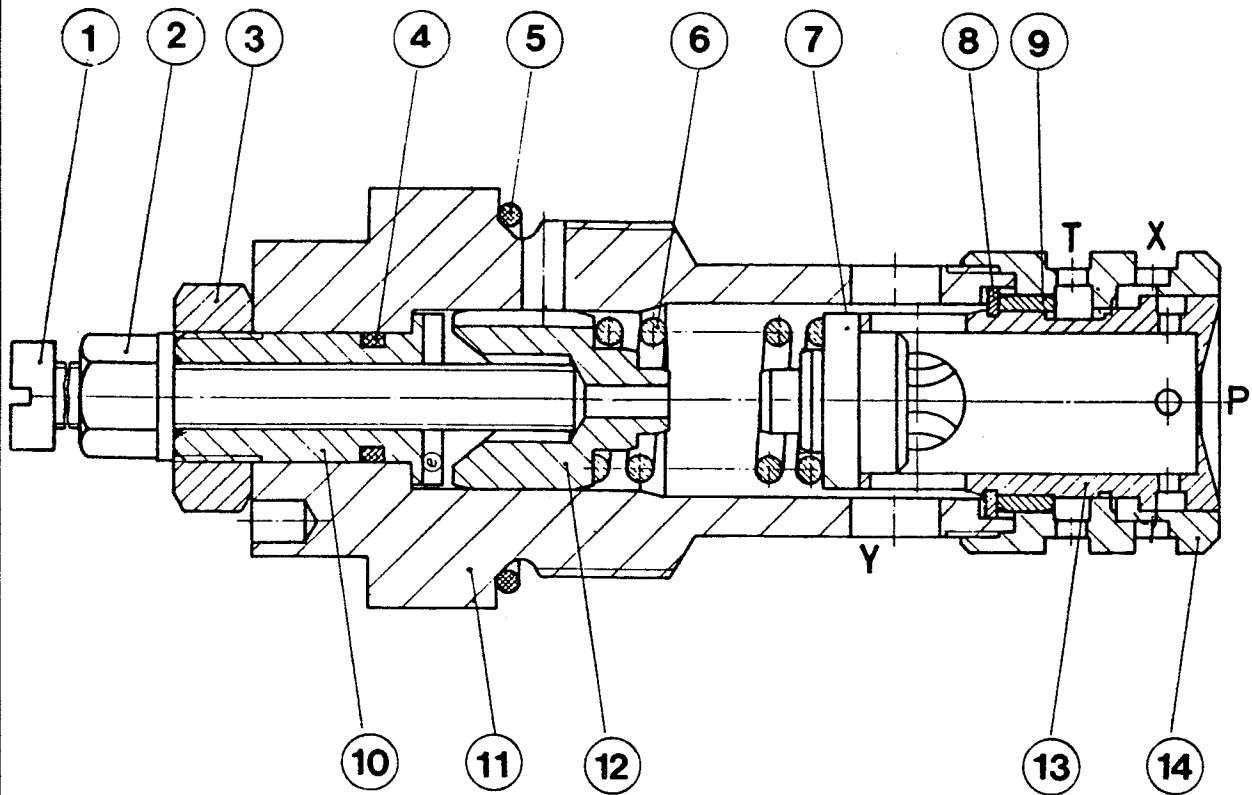




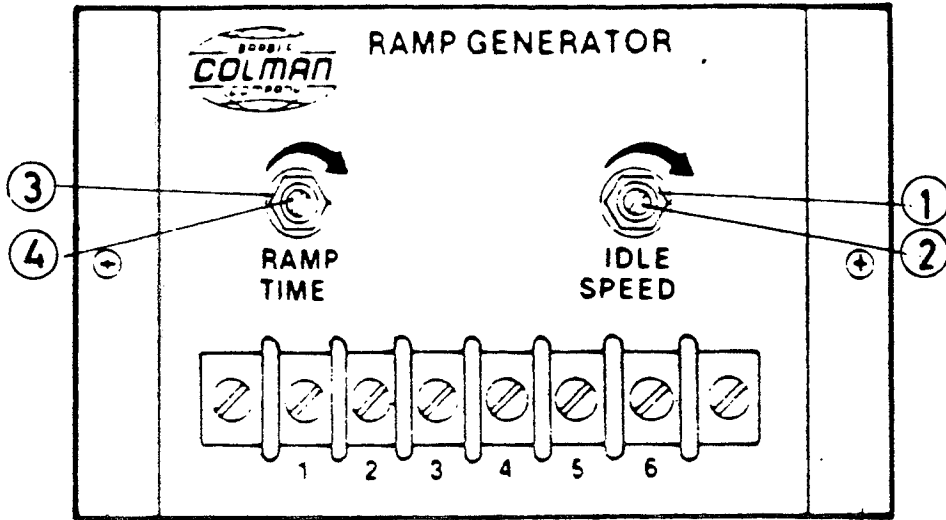
6040i-02-12

5.1

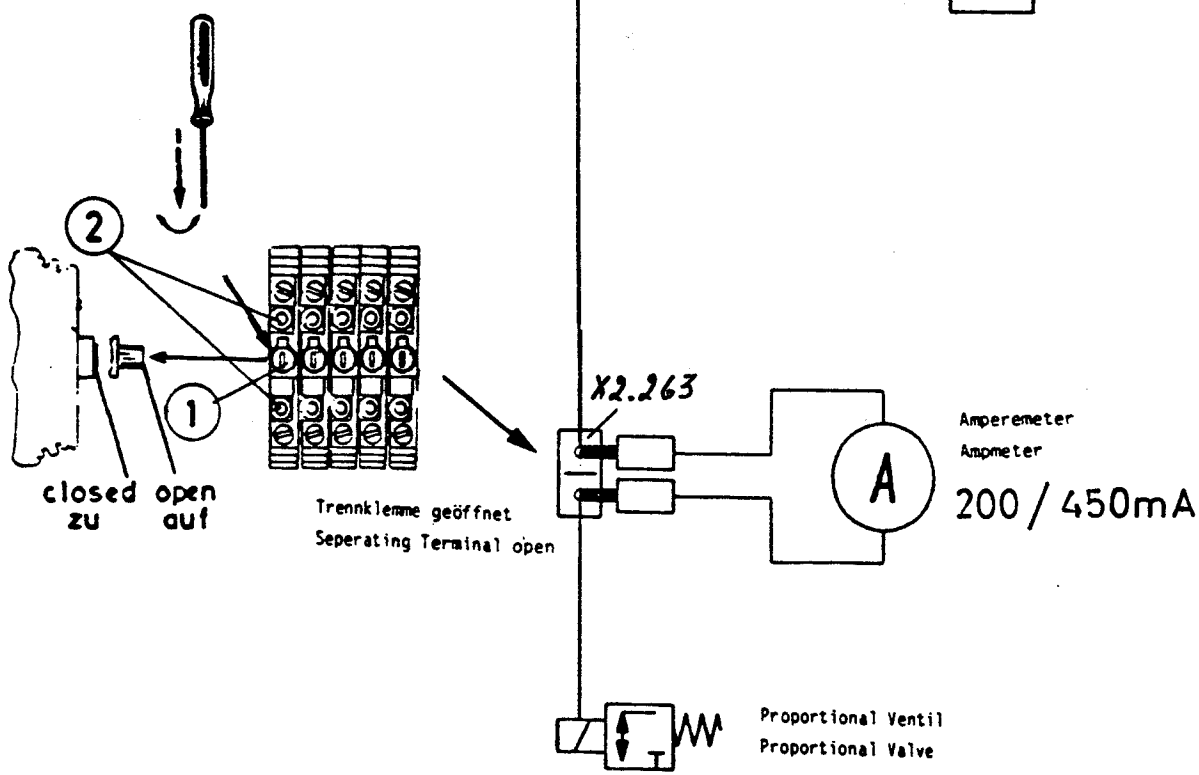
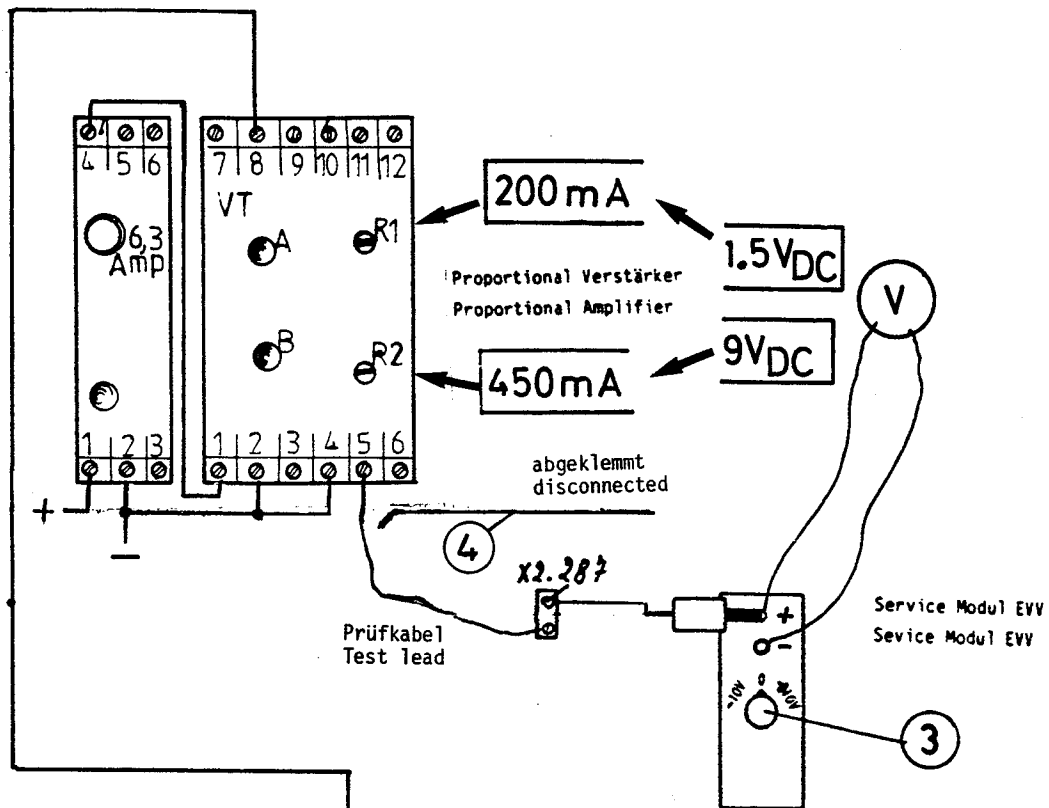
**MANNESMANN  
DEMAG**  
Baumaschinen



8064

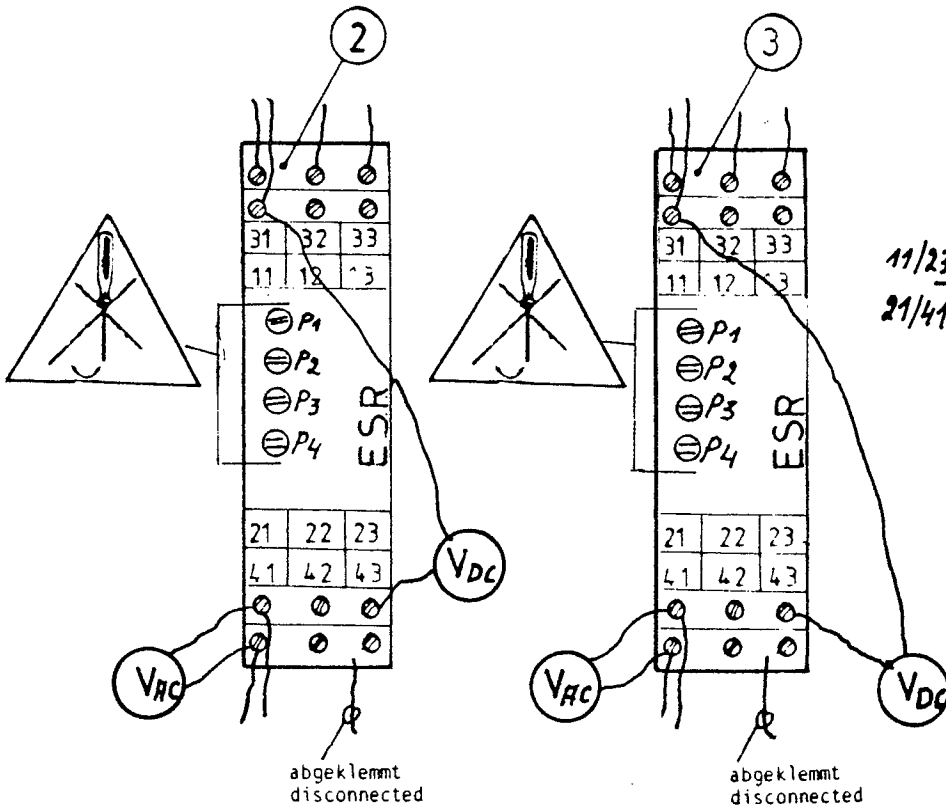














CLICK HERE TO **DOWNLOAD** THE COMPLETE MANUAL

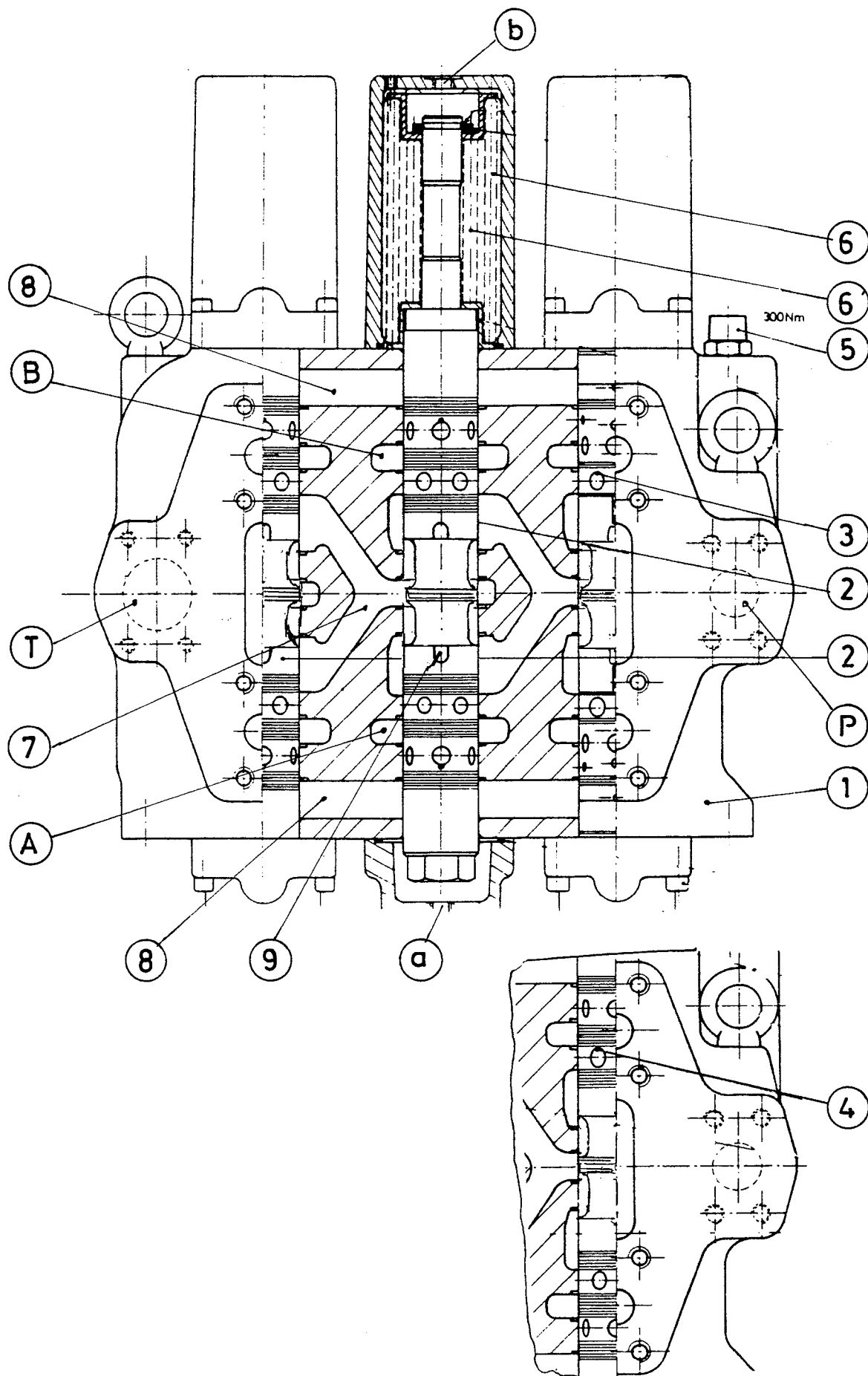
- Thank you very much for reading the preview of the manual.
- You can download the complete manual from: [www.heydownloads.com](http://www.heydownloads.com) by clicking the link below

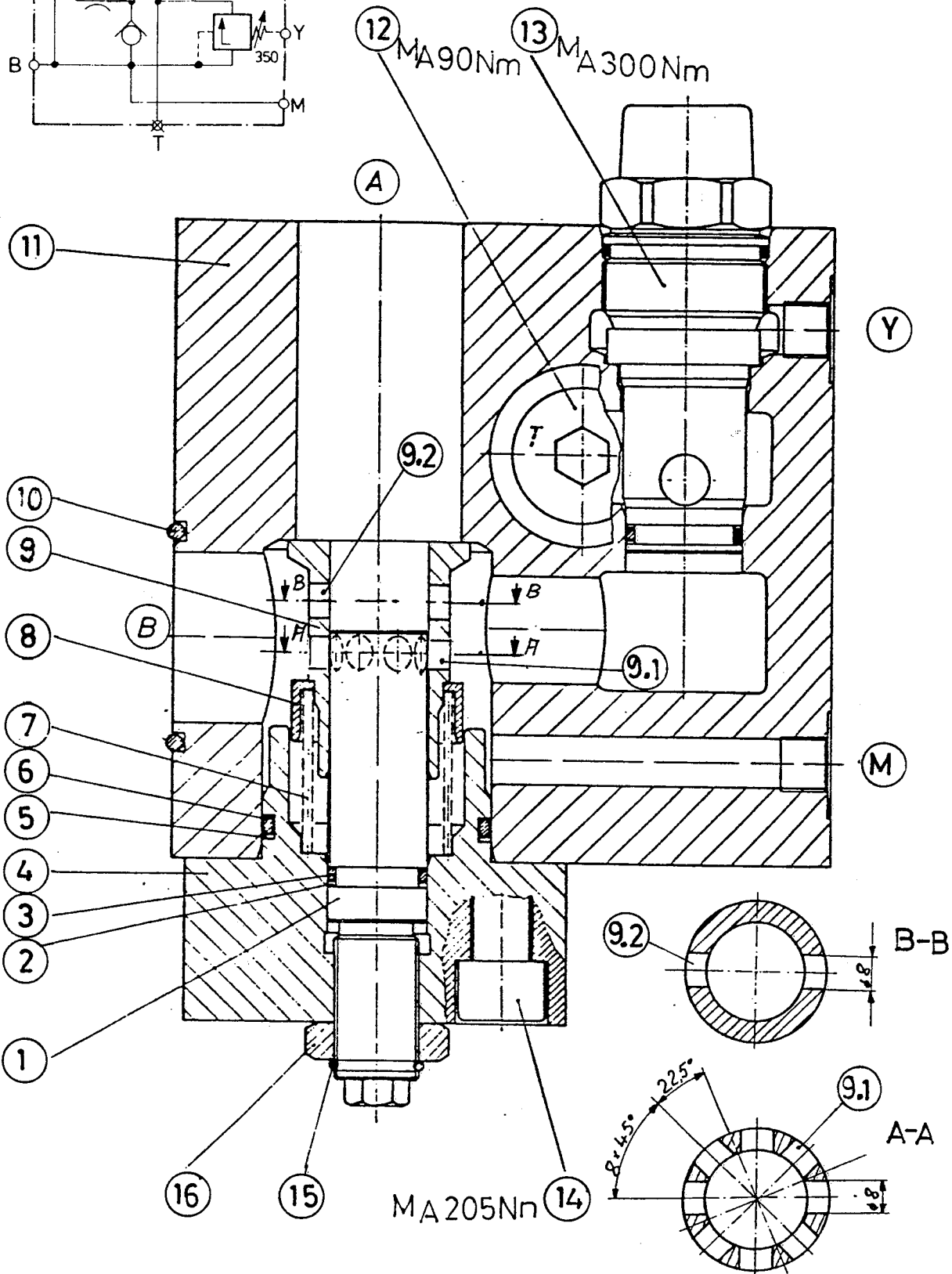
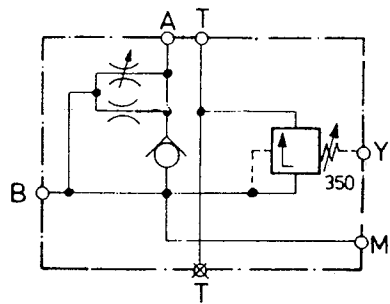


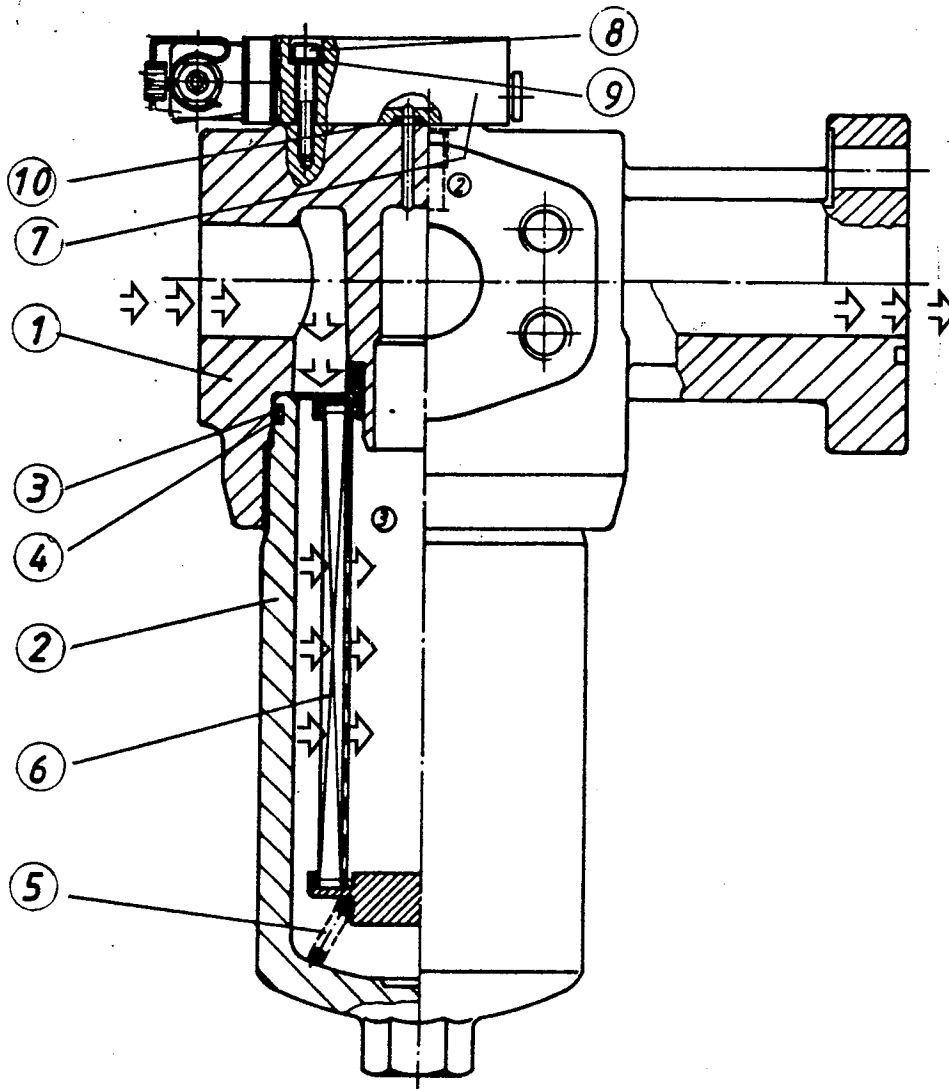
- Please note: If there is no response to CLICKING the link, please download this PDF first and then click on it.

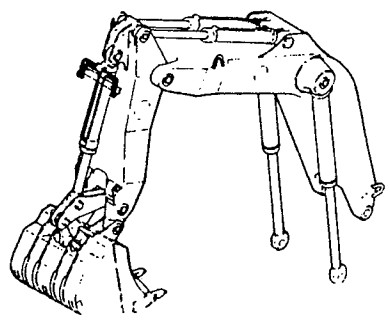
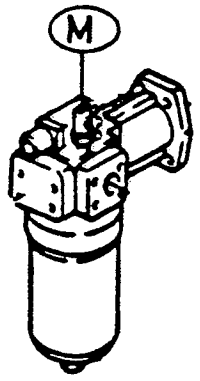
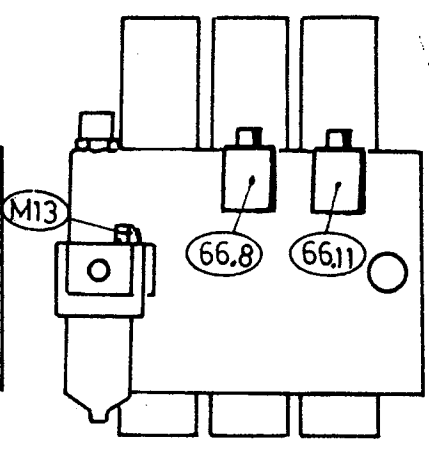
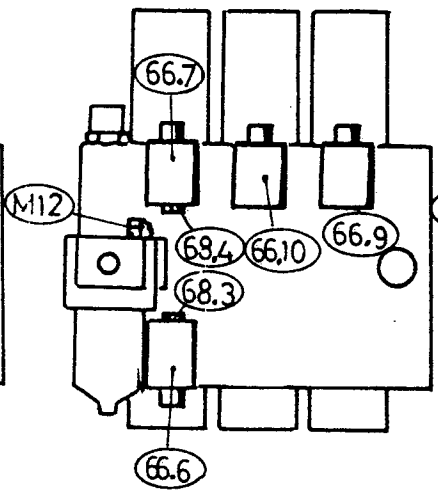
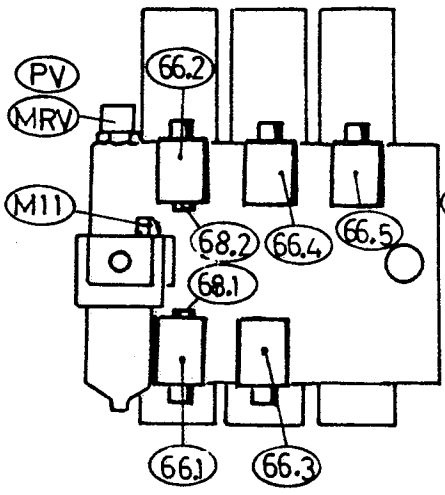
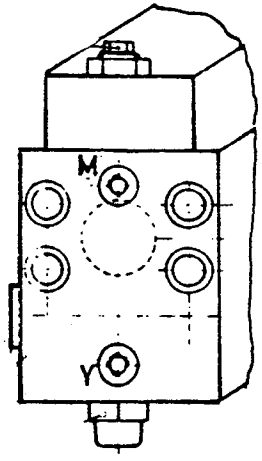
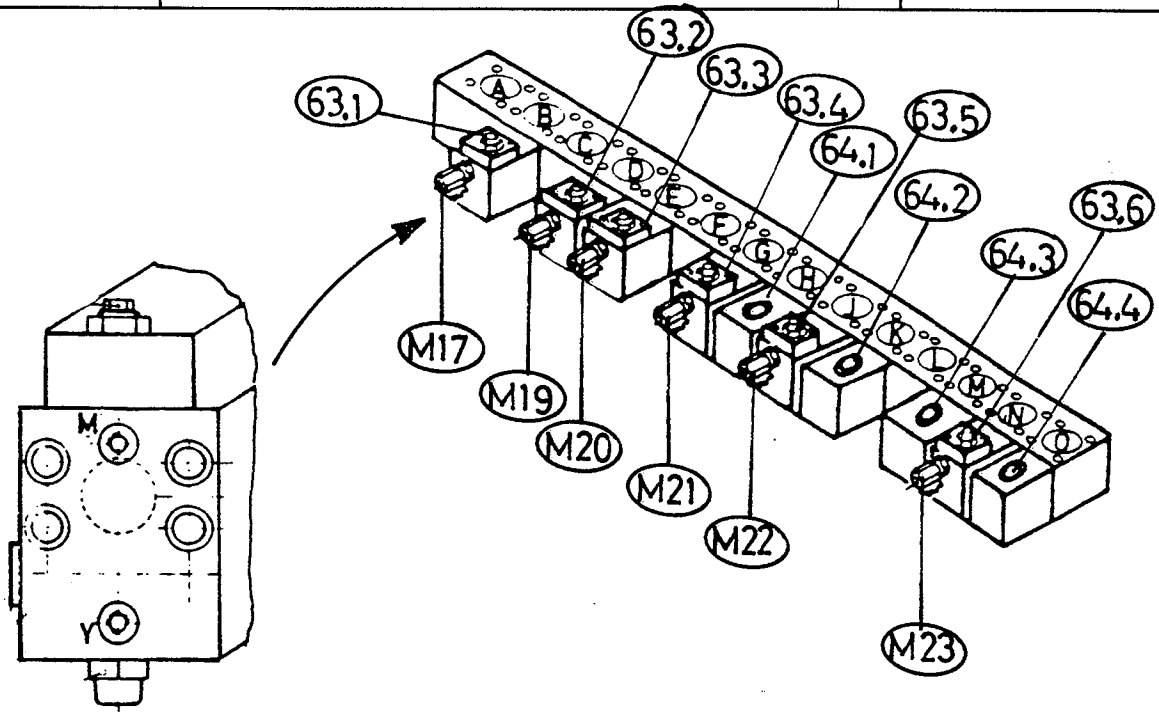
CLICK HERE TO **DOWNLOAD** THE COMPLETE MANUAL

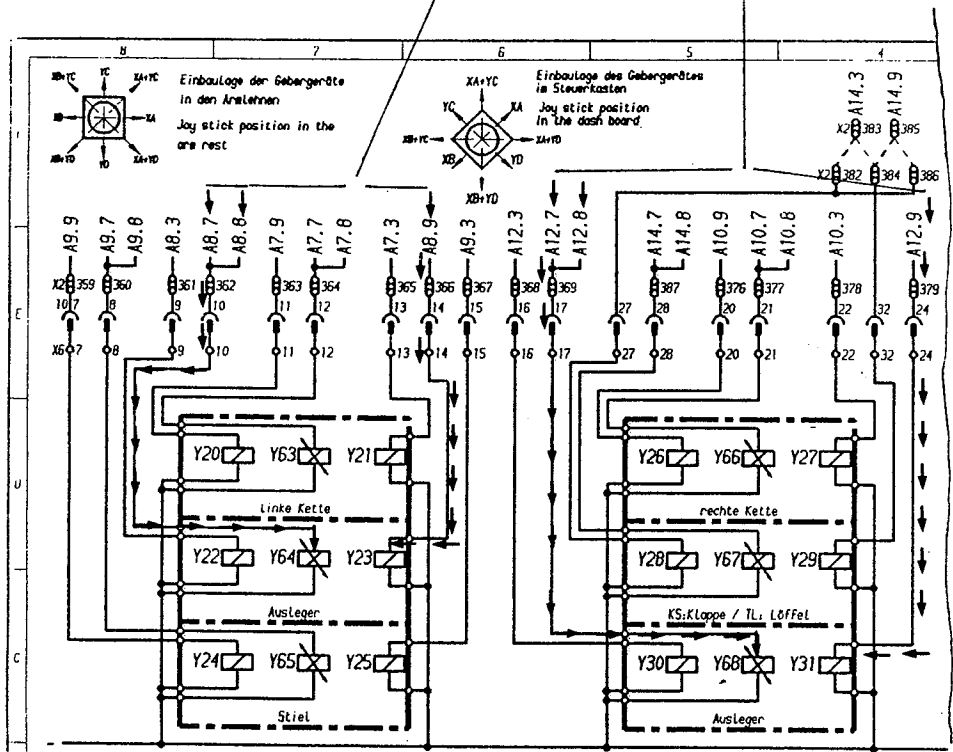
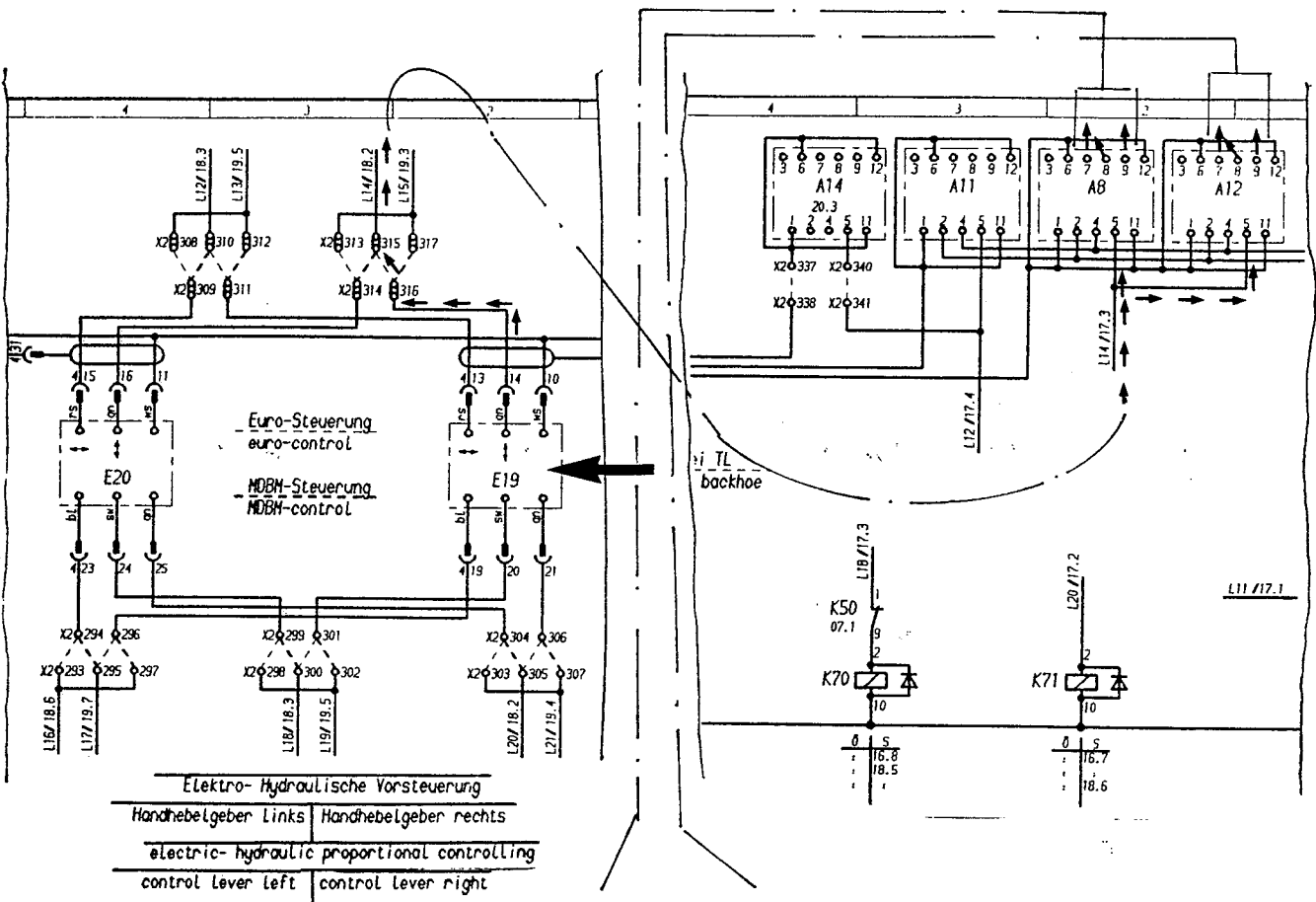


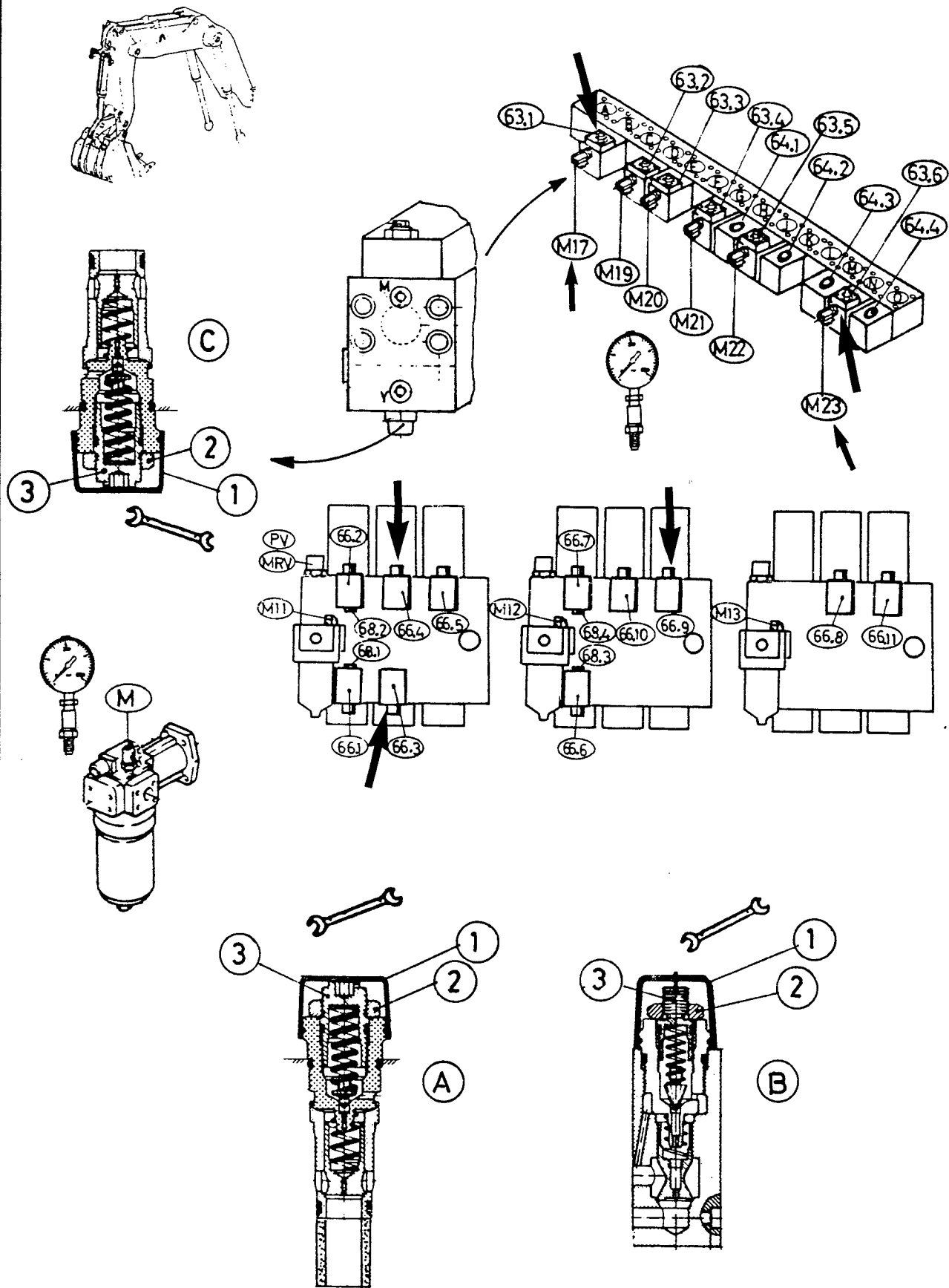


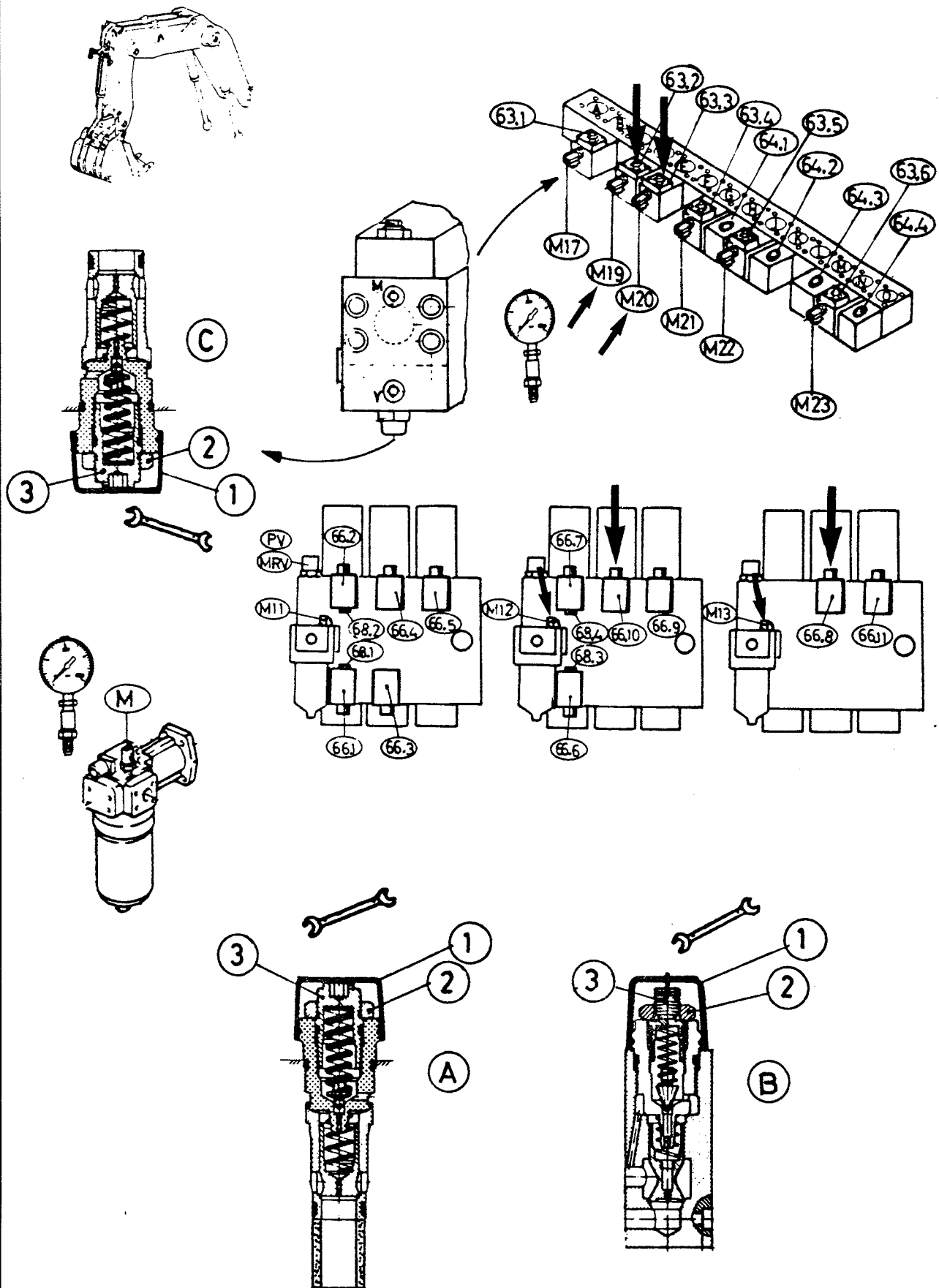


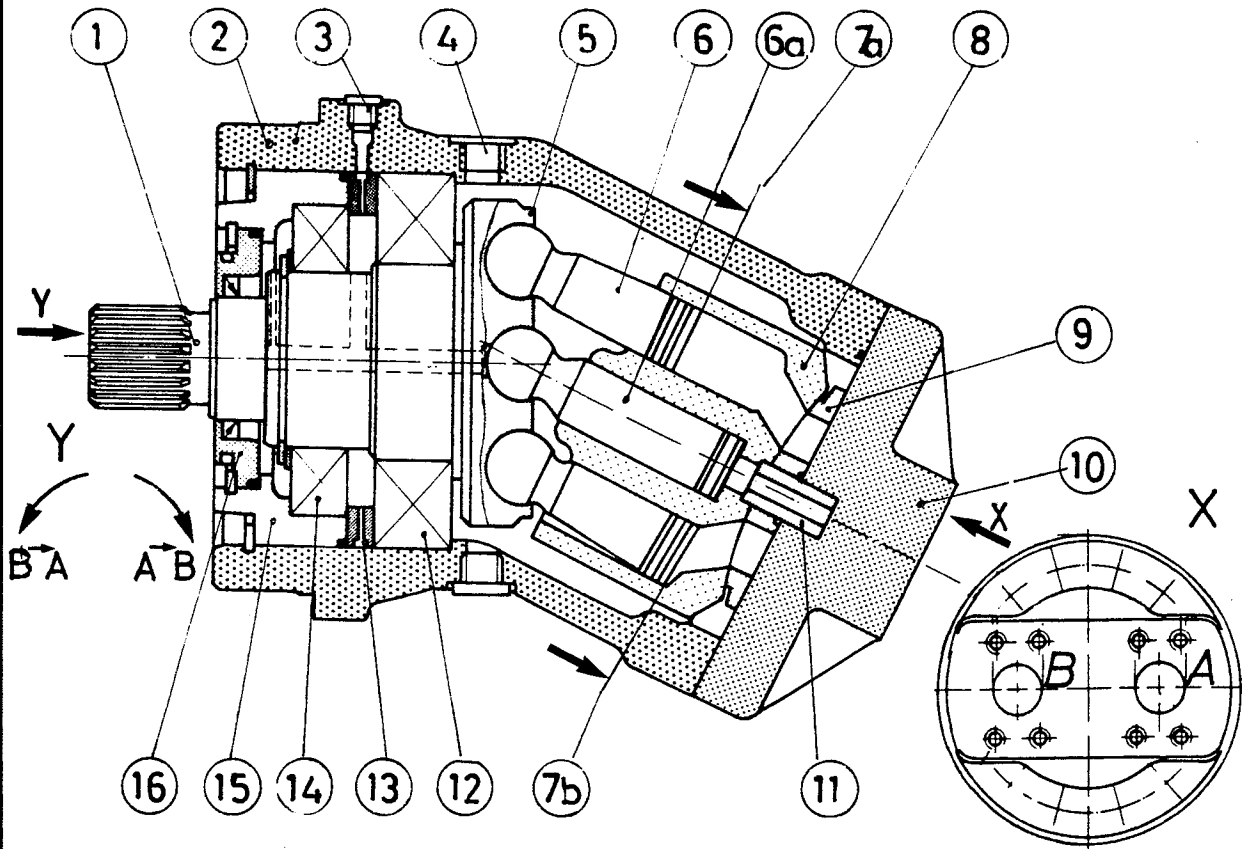


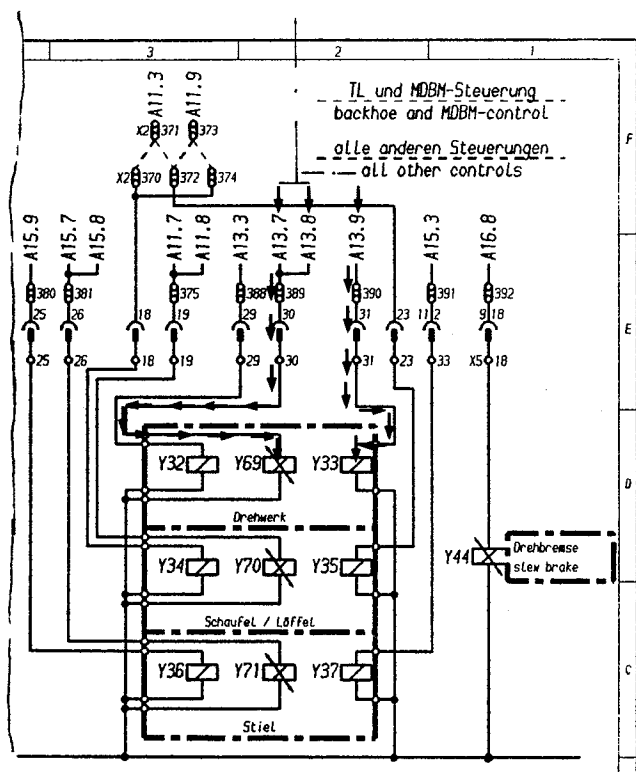
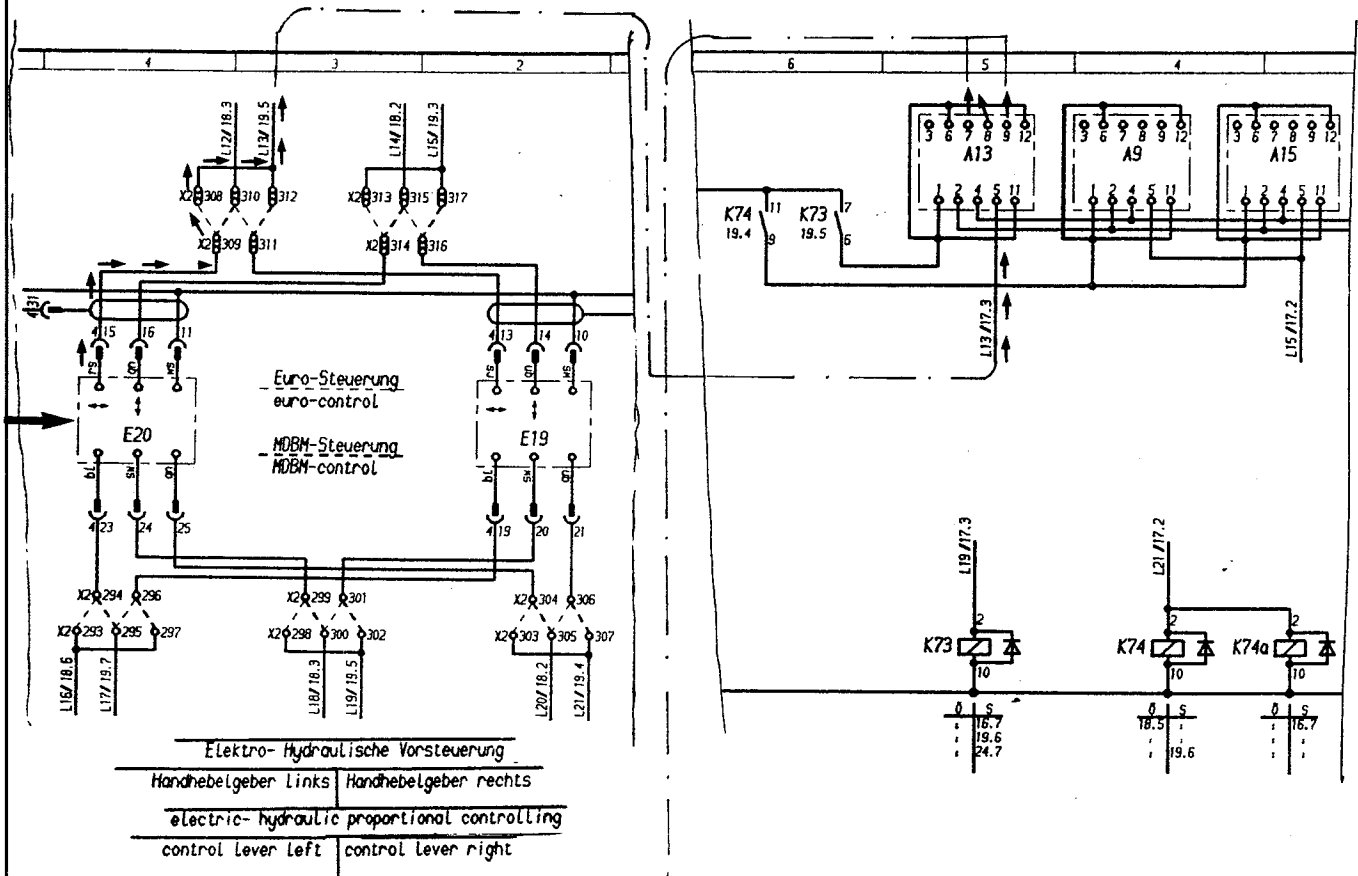
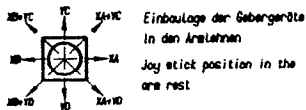


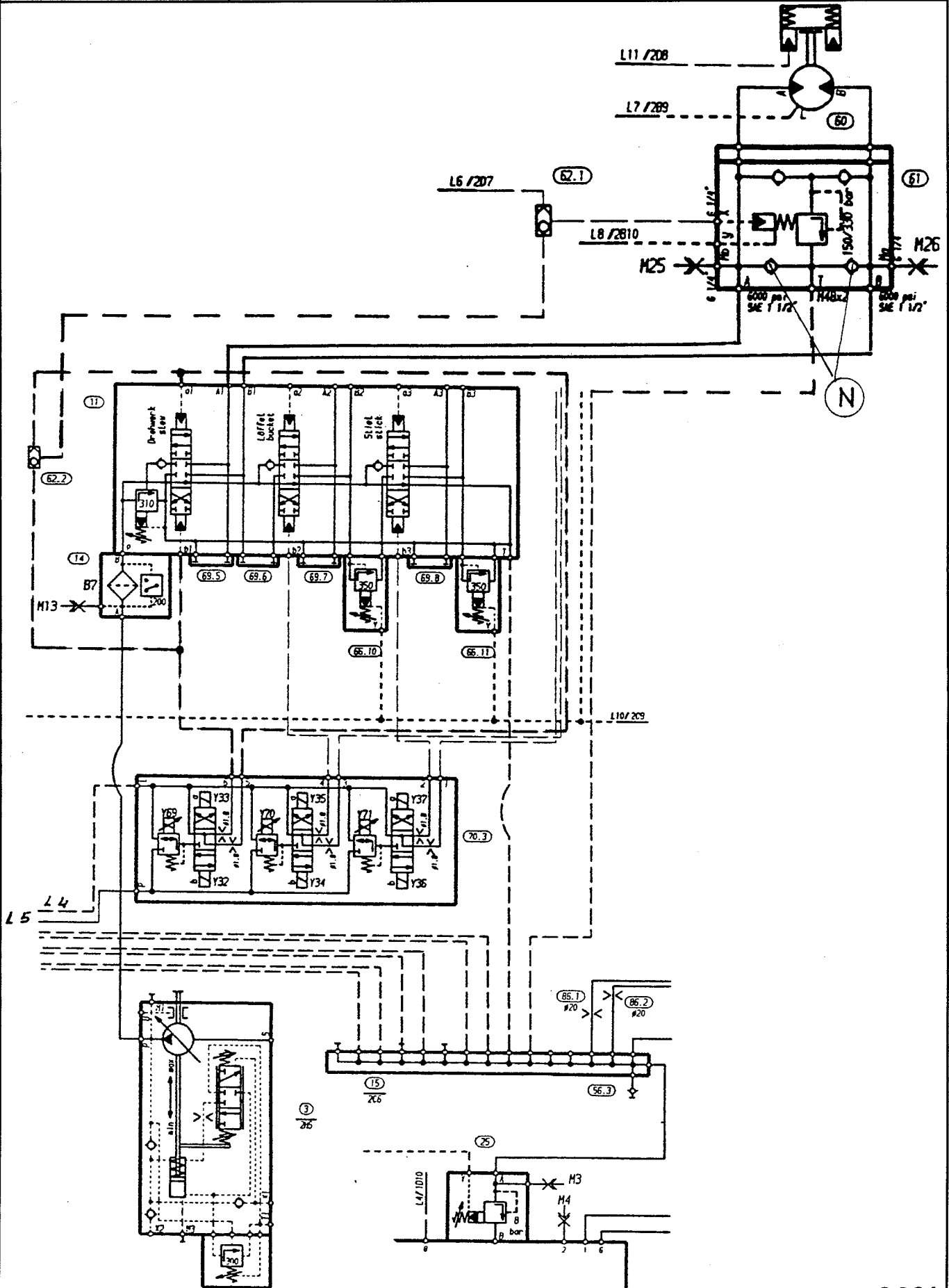


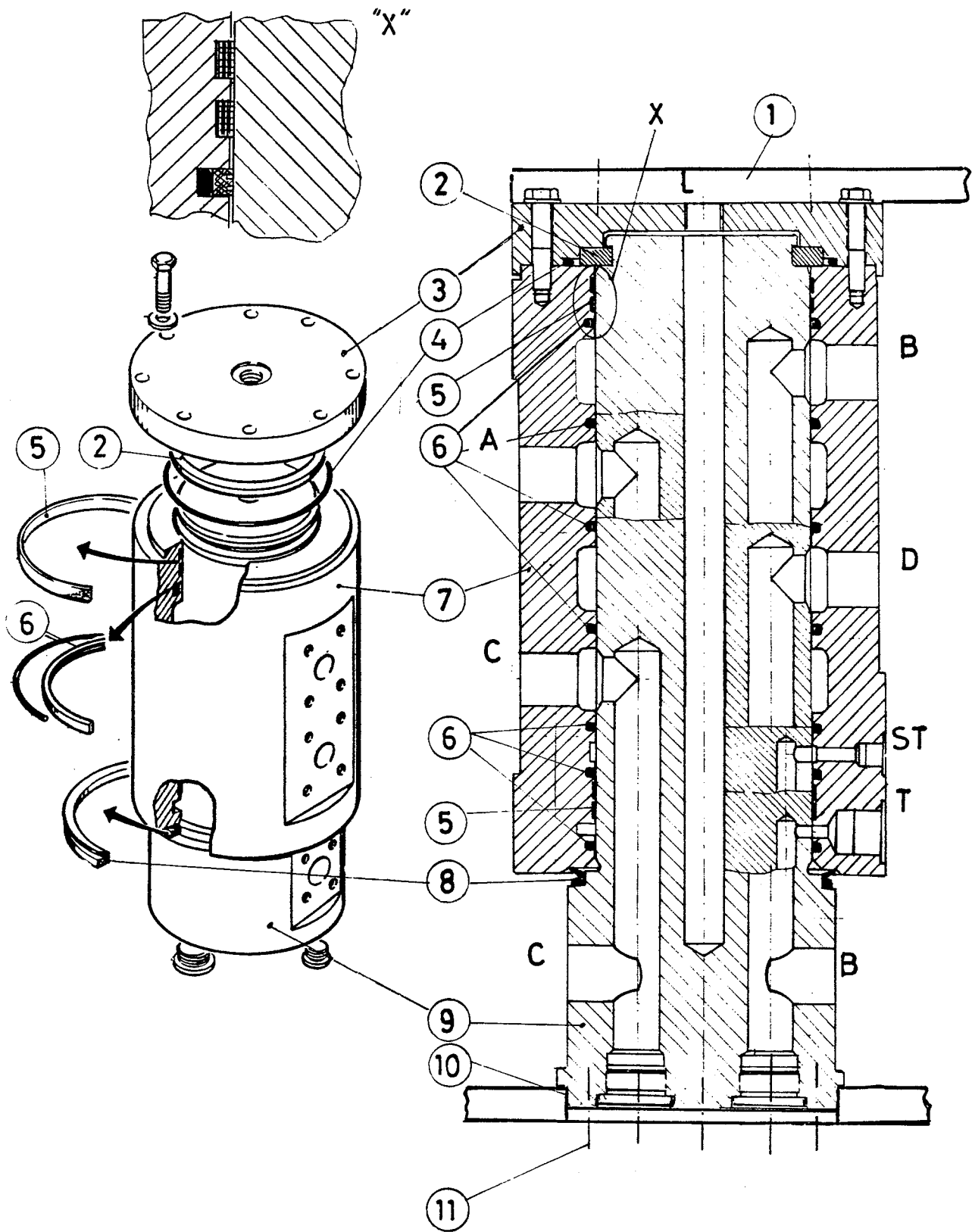


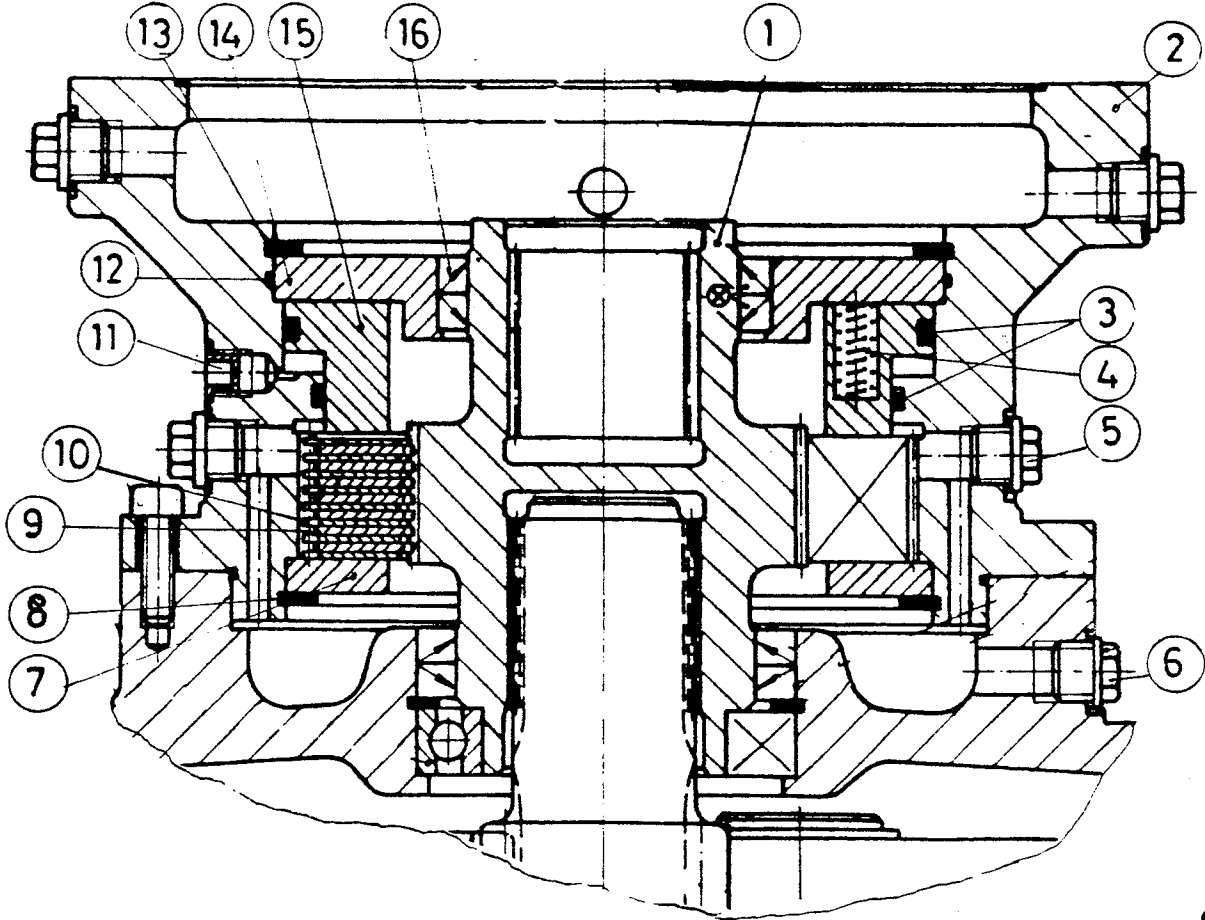




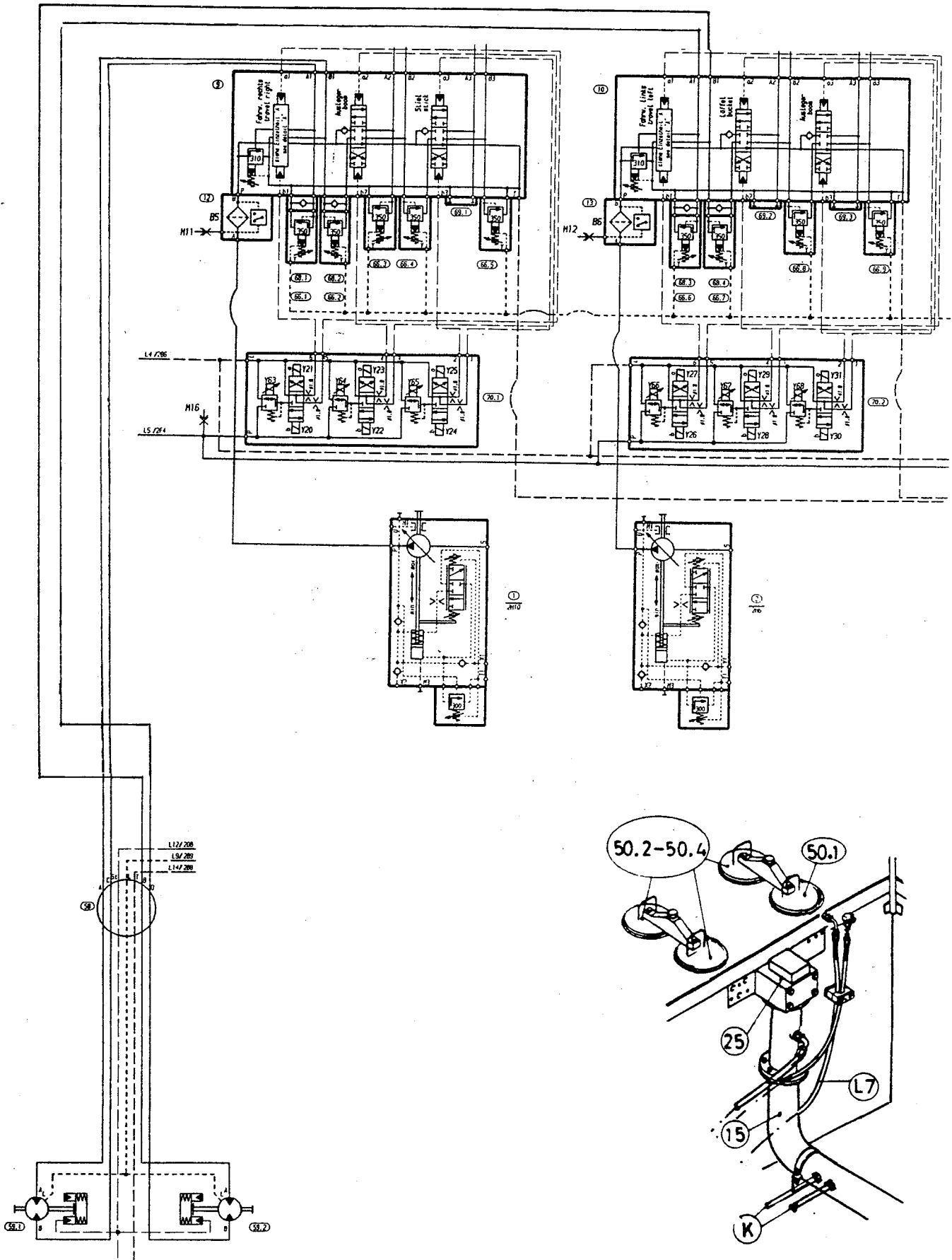


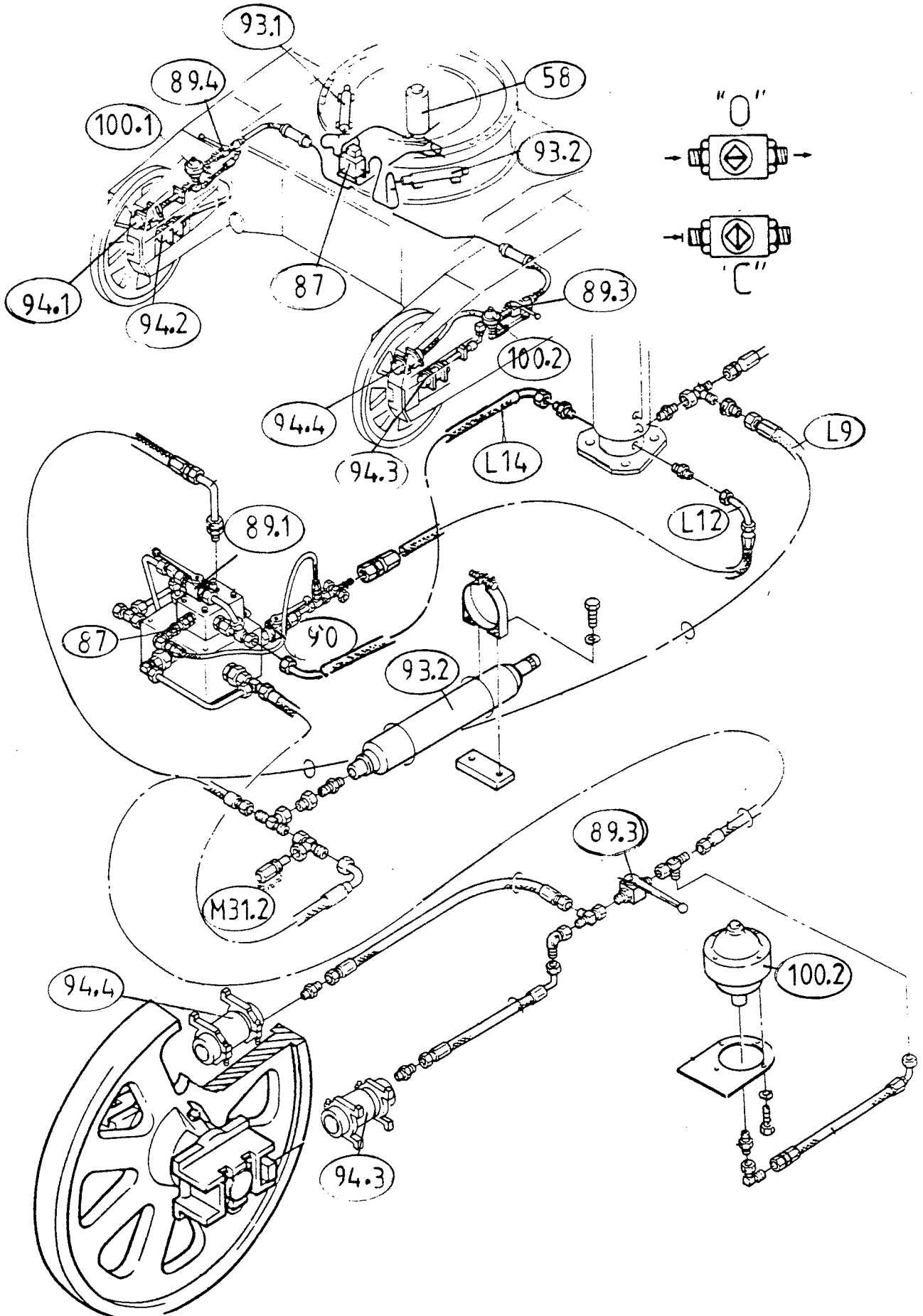




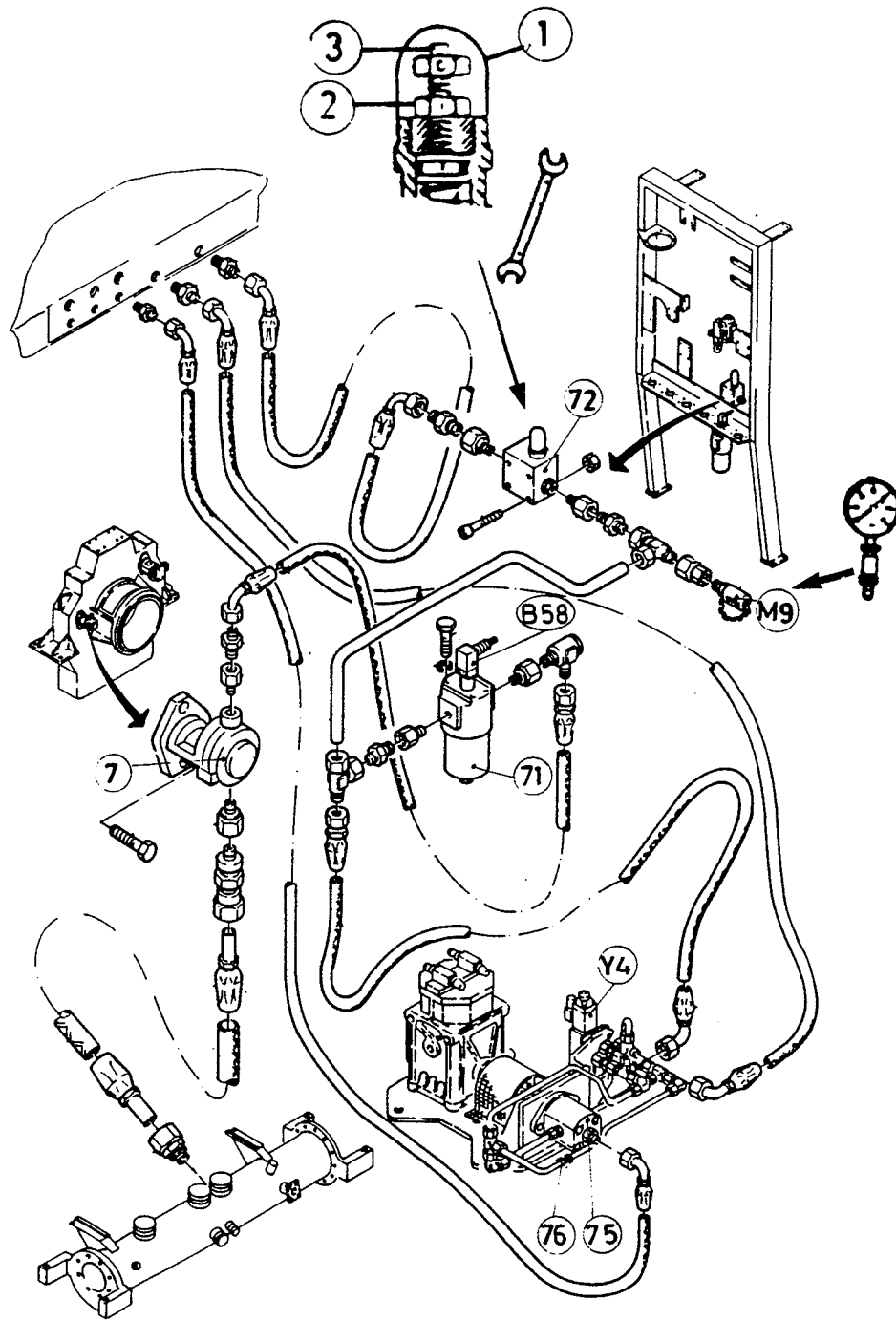


9085

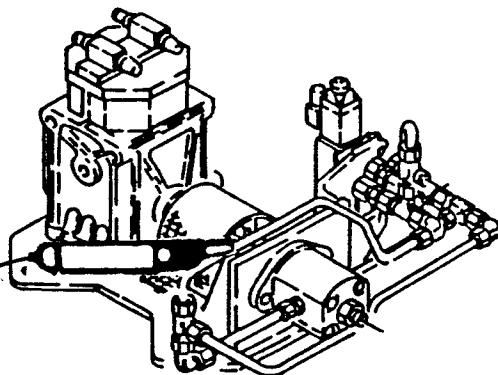


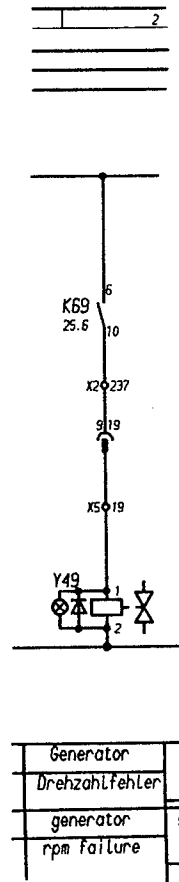
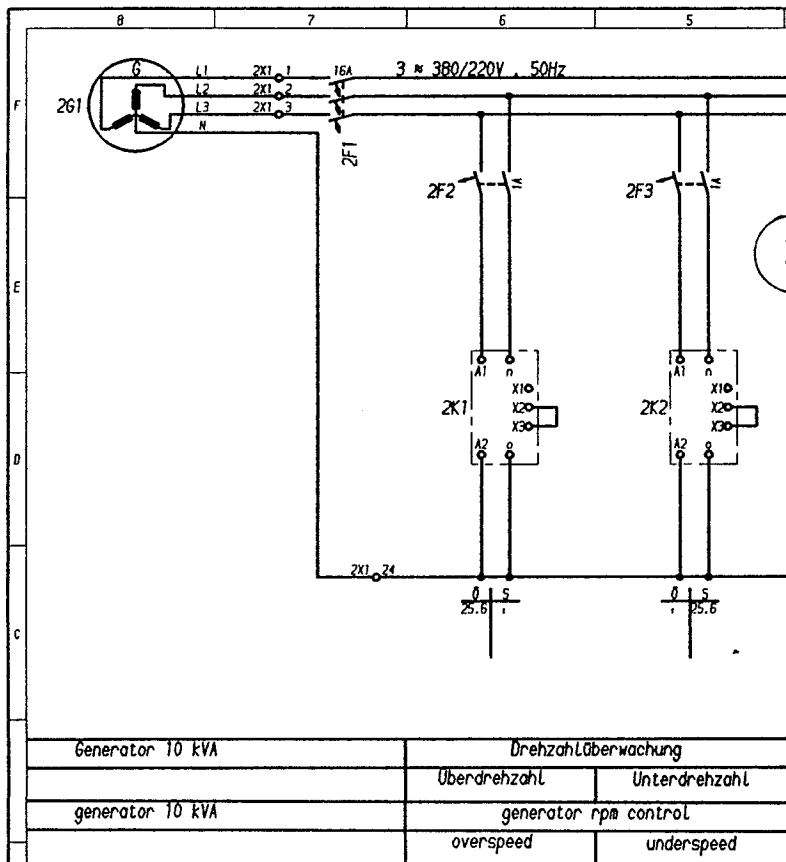
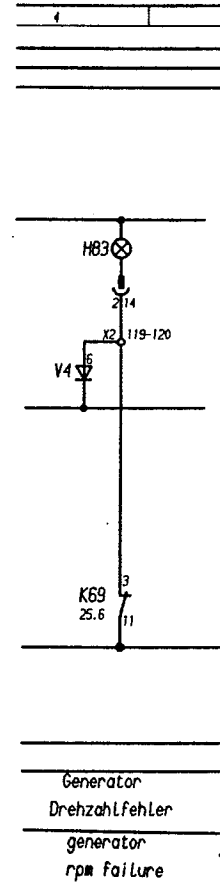
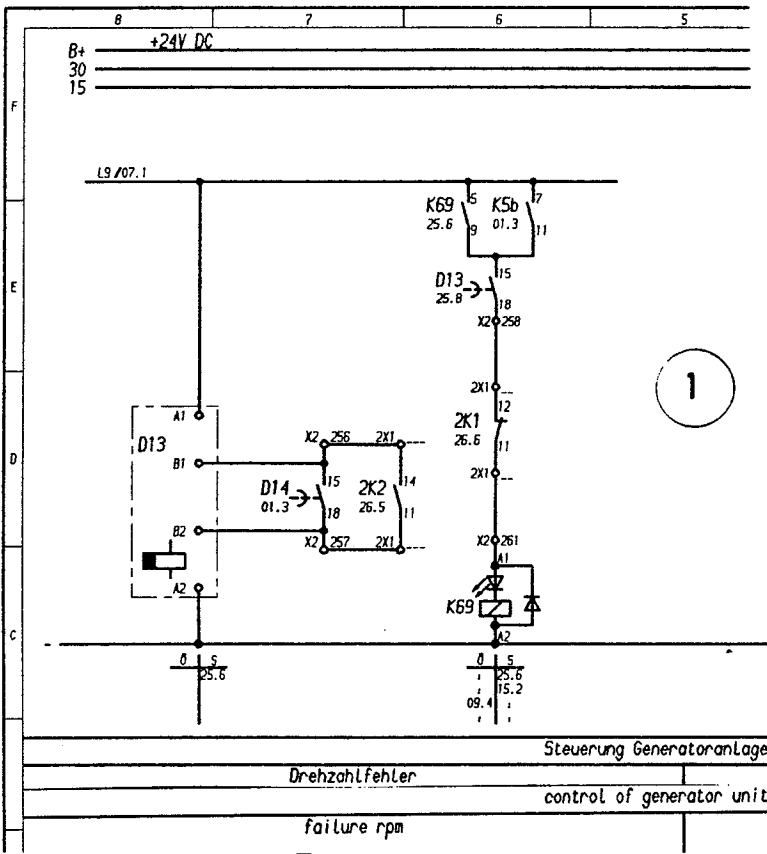


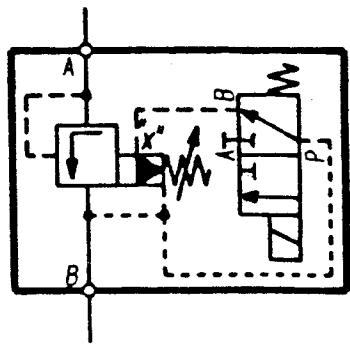
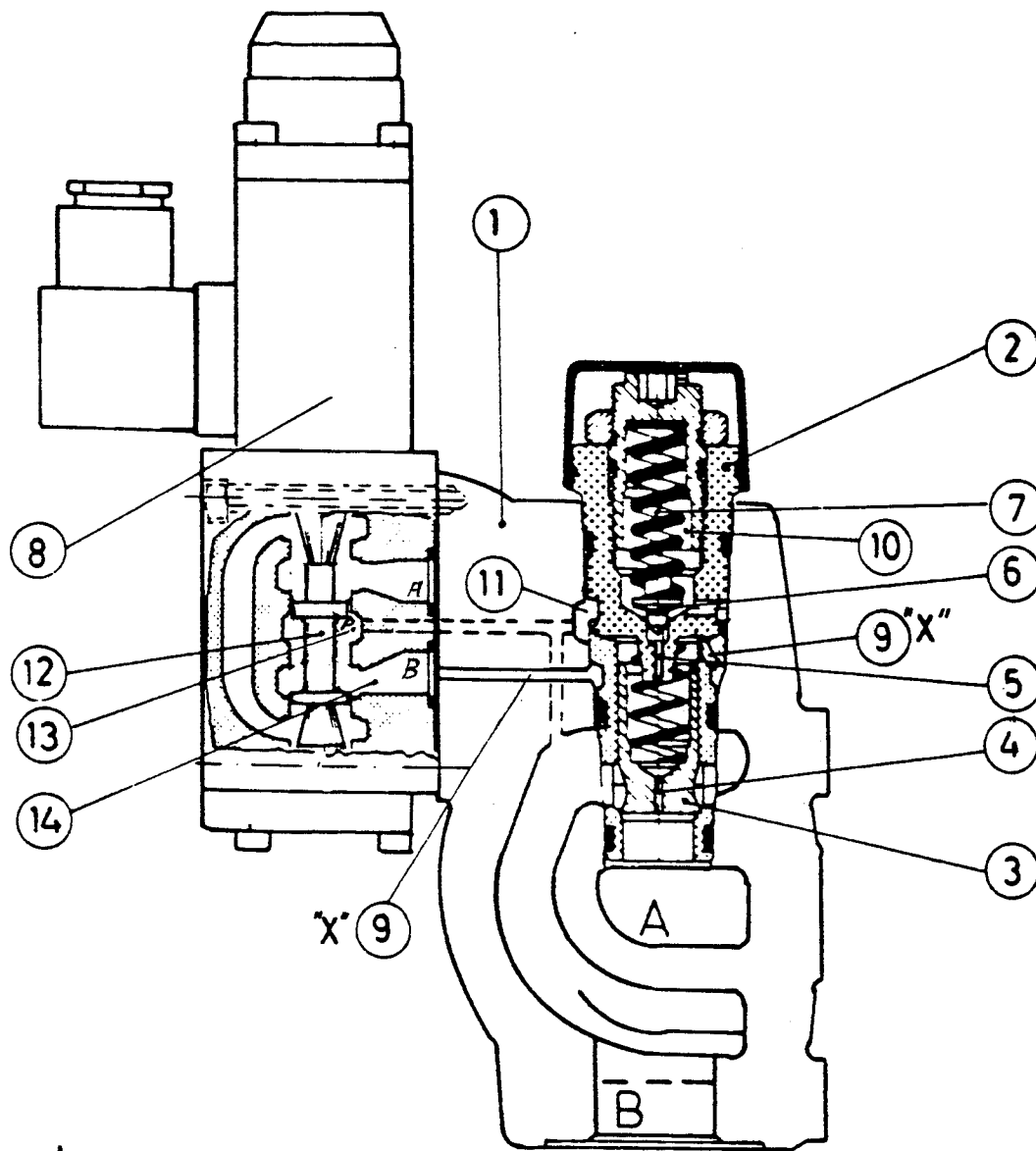


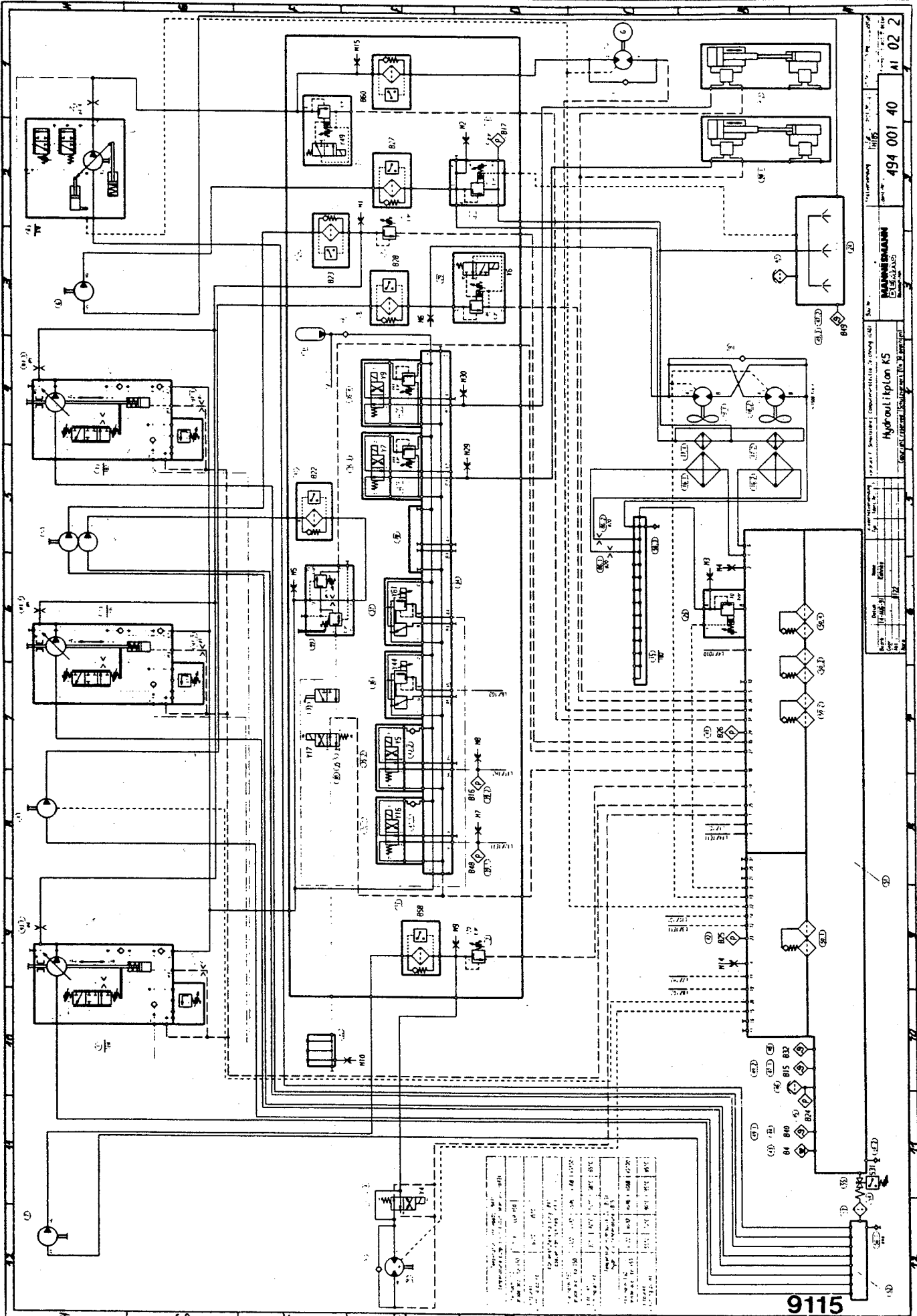


2500±200









494 001 40  
AI 02 2  
MANNESMANN  
DEMAG  
Hydraulikplan K5  
Baumaschinen











8		7		6		5		4		3		2		1	
Zielbezeichnung Description		Steckver- bindung Connector	Kabel Cable	Klemmen- Nr. Terminal- No.	Kabel Cable	Steckver- bindung Connector	Zielbezeichnung Description		Kabelliste List of Cables						
Bauteil Component	nächster Klemmpkt. Next Terminal Contact		Nr. / Farbe/ Querschn. No. / Colour / Section	X2	Nr. / Farbe/ Querschn. No. / Colour / Section		nächster Klemmpkt. Next Terminal Contact	Bauteil Component	Nr. No.	Typ Type	Einbauort Location	Ident-Nr. Item No.			
F1	X4.2	7.1	. bl 2.5	1	. bl 6	.	F6	.							
F1	X4.2	7.2	. bl 2.5	2	. bl 2.5	.	K44.2	.							
F1	X4.3	7.3	. bl 2.5	3	. bl 2.5	.	K44.4	.							
F1	X4.3	7.4	. bl 2.5	4	. bl 2.5	.	K44.6	.							
.	E26(S48.b)	1.1	. bl 2.5	5	. bl 6	.	F9	.							
.	S21.+	1.2	. bl 2.5	6	.	.	.	.							
.	P1.B+	1.3	. bl 1	7	.	.	.	.							
F10.2	X4.10	7.6	. bl 1	8	.	.	.	.							
.	P1.L+	1.4	. bl 1	9	.	.	.	.							
F10.4	X4.11	7.7	. bl 1	10	.	.	.	.							
.	S4.A/S5.A/S9.A	1.5	. bl 1	11	. bl 2.5	.	F11	.							
.	.	.	.	12	. bl 1	.	A31.24V+	.							
.	.	.	.	13	. bl 1	.	A32.41	.							
.	.	.	.	14	. bl 1	.	A35.1	.							
.	S4.B	1.6	. bl 1	15	. bl 1	.	K3.1/K5.A1	.							
.	.	.	.	16	. bl 1	.	K5a.A1/K5b.A1	.							
K45.2	X4.7	7.5	. bl 1	17	. bl 1	.	K3.9	.							
.	S5.B	1.7	. bl 1	18	. bl 1	.	K51.A1	.							
.	S9.B	1.8	. bl 1	19	. bl 1	.	K22.2	.							
.	.	.	.	20	. bl 1	.	F12	.							
B4.+	X3.1	6.1	. bl 1	21	. bl 1	.	K12 ...	.							
E12.A	X4.23	7.13	. bl 1	22	. bl 1	.	K18/K11	.							
.	.	.	.	23	. bl 1	.	X2.57	.							
B5.A	X6.1	10.1	. bl 1	24	. bl 1	.	K5.9/K12.9	.							
B5.B	X6.2	10.2	. bl 1	25	. bl 1	.	K12.A1	.							
.	H6	1.9	. bl 1	26	. bl 1	.	K12.10	.							
B6.A	X6.3	10.3	. bl 1	27	. bl 1	.	K5.10/K13.9	.							
B6.B	X6.4	10.4	. bl 1	28	. bl 1	.	K13.A1	.							
.	H7	1.10	. bl 1	29	. bl 1	.	K13.10	.							
B7.A	X6.5	10.5	. bl 1	30	. bl 1	.	K5.11/K14.9	.							

Farbbezeichnung / Description of Colour					
be	beige	/ beige	or	orange	/ orange
bl	blau	/ blue	rs	rosa	/ pink
br	braun	/ brown	rt	rot	/ red
ge	gelb	/ yellow	sw	schwarz	/ black
gn	grün	/ green	vio	violett	/ violet
gr	grau	/ grey	ws	weiß	/ white

Datum		Name		Wiederholverwendung		Vordruck f. Klemmenpläne		Computererstellte Zeichnung (CAD)		Bau Nr.:		Erstverwendung		Typ		Ident-Nr.		F		ÄM-Nr.		Name		Datum		
Bearb.	30-JUL-93	THERMANN		.	.	.	.	.	.	.	.	.	H185	.	.	.	.	.	.	.	.	.	.	.	.	.
Gepr.	.	.		.	.	.	.	.	.	.	.	.	Ident-Nr.:		Format		Blatt/Blätter		.		.		.		.	
Abt.:	8122.1		.		.	.	.	.	.	.	.	.	603 347 40		A3		28/.		.		.		.		.	
Norm	.		.		.	.	.	.	.	.	.	.	Entstanden aus:		Ersatz für:		Ersetzt durch:		.		.		.		.	
SIA	Datum		.		7		6		5		.		.		.		.		.		.		.		.	



Copyright reserved (Schutzvermerk DIN 34 beachten)

8		7		6		5		4		3		2		1	
Zielbezeichnung Description		Steckver- bindung Connector	Kabel Cable	Klemmen- Nr. Terminal- No.	Kabel Cable	Steckver- bindung Connector	Zielbezeichnung Description				Kabelliste List of Cables				
Bauteil Component	nächster Klemmpkt. Next Terminal Contact		Nr. / Farbe/ Querschn. No. / Colour / Section	X2	Nr. / Farbe/ Querschn. No. / Colour / Section		nächster Klemmpkt. Next Terminal Contact	Bauteil Component			Nr. No.	Typ Type	Einbauort Location	Ident-Nr. Item No.	
E19.sw	4x0.75 sw	4.20	. bl 1	o 301	. .	.	.	.	.	.					
.	.	.	.	o 302	bl 1	.	.	.	K73.2	.					
.	.	.	.	o 303	bl 1	.	.	.	K74.2	.					
E20.gn	4x0.75 br	4.25	. bl 1	o 304	. .	.	.	.	.	.					
.	.	.	.	o 305	bl 1	.	.	.	K71.2	.					
E19.gn	4x0.75 br	4.21	. bl 1	o 306	. .	.	.	.	.	.					
.	.	.	.	o 307	bl 1	.	.	.	K74.2	.					
.	.	.	*	o 308	bl 1	.	.	.	A13.5	.					
E20.rs	Kab.2.5	4.15	* ge	o 309	. .	.	.	.	.	.					
.	.	.	*	o 310	bl 1	.	.	.	A11.5/X2.341	.					
E19.rs	Kab.1.5	4.13	* rs	o 311	. .	.	.	.	.	.					
.	.	.	*	o 312	bl 1	.	.	.	A13.5	.					
.	.	.	*	o 313	bl 1	.	.	.	A15.5/A9.5	.					
E20.gn	Kab.2.6	4.16	* br/gn	o 314	. .	.	.	.	.	.					
.	.	.	*	o 315	bl 1	.	.	.	A12.5/X2.344	K58.3					
E19.gn	Kab.1.6	4.14	* gn	o 316	. .	.	.	.	.	.					
.	.	.	*	o 317	bl 1	.	.	.	A15.5/A9.5	.					
E19.br/gn	4x0.75 ge/gn	4.22	. bl 1	o 318	. .	.	.	.	.	.					
.	.	.	.	o 319	bl 1	.	.	.	K58.2	.					
E20.br/gn	4x0.75 ge/gn	4.26	. bl 1	o 320	. .	.	.	.	.	.					
.	.	.	.	o 321	. .	.	.	.	.	.					
.	.	.	.	o 322	. .	.	.	.	.	.					
.	.	.	.	o 323	. .	.	.	.	.	.					
.	.	.	.	o 324	. .	.	.	.	.	.					
.	.	.	.	o 325	. .	.	.	.	.	.					
.	.	.	.	o 326	. .	.	.	.	.	.					
.	.	.	.	o 327	. .	.	.	.	.	.					
.	.	.	.	o 328	. .	.	.	.	.	.					
.	.	.	.	o 329	. .	.	.	.	.	.					
.	.	.	.	o 330	. .	.	.	.	.	.					

Farbbezeichnung / Description of Colour

be	beige	/ beige	or	orange	/ orange
bl	blau	/ blue	rs	rosa	/ pink
br	braun	/ brown	rt	rot	/ red
ge	gelb	/ yellow	sw	schwarz	/ black
gn	grün	/ green	vio	violett	/ violet
gr	grau	/ grey	ws	weiß	/ white

A		Datum		Name		Wiederholverwendung		Vordruck f. Klemmenpläne		Computererstellte Zeichnung (CAD)		Bau Nr.:		Erstverwendung		Typ		Ident-Nr.		F		ÄM-Nr.		Name		Datum		
Bearb.	30-JUL-93	THERMANN		.	.	.	.	Klemme	Einbauort	Kabinenuntersatz		.		H185		.	.	.	.	.	.	.	.	.	.	.	.	.
Gepr.	.	.		.	.	.	.	X2	Location	cab support		.		Ident-Nr.:		Format		Blatt/Blätter		.		.		.		.		
Abt.:	8122.1		.		.		.		Copyright reserved (Schutzvermerk DIN 34 beachten)		.		.		603 347 40		A3		38/.		.		.		.		.	
Norm	.		.		.		.		.		.		.		.		.		.		.		.		.		.	
SIA	Datum		.		7		6		5		.		Entstanden aus:		Ersatz für:		.		Ersetzt durch:		.		.		.		.	



CLICK HERE TO **DOWNLOAD** THE COMPLETE MANUAL

- Thank you very much for reading the preview of the manual.
- You can download the complete manual from: [www.heydownloads.com](http://www.heydownloads.com) by clicking the link below



- Please note: If there is no response to CLICKING the link, please download this PDF first and then click on it.

CLICK HERE TO **DOWNLOAD** THE COMPLETE MANUAL