

PREFACE

When it becomes necessary to replace parts on SUZUKI MOTORCYCLES, always use SUZUKI GENUINE PARTS which have passed a strict inspection which guarantees quality and performance.  
This parts catalogue covers the list of all service parts for SUZUKI LT-Z400K3.

INSTRUCTIONS FOR QUOTING THE CATALOGUE

1. DIMENSIONS

Dimensions of the parts in this catalogue are indicated in unit millimeters.

2. ABBREVIATIONS

Abbreviations used in this catalogue are as follows:

- |       |                        |     |                            |
|-------|------------------------|-----|----------------------------|
| AR    | : As required          | NT  | : Number of teeth          |
| ASSY  | : Assembly             | OPT | : Optional                 |
| E.NO. | : Engine number        | OS  | : Over size                |
| F.NO. | : Frame number         | STD | : Standard                 |
| D     | : Diameter of material | T   | : Thickness                |
| ID    | : Inside diameter      | US  | : Under size               |
| OD    | : Outside diameter     | W   | : Width                    |
| L     | : Length               | E28 | : Canada specification     |
| LH    | : Left hand side       | E3  | : Federal specification    |
| RH    | : Right hand side      | E33 | : California specification |

~100045 : Up to F.NO.100045

100046~ : From F.NO.100046

12 x 34 x 5.8 : Figures in the description column

( ) show the dimensions of parts.

ID OD T(or W,L)

3. INNER PARTS OF ASSEMBLY

Part name with a dot (.) in front as shown in the description column indicates the component of the assembly also available individually.

4. MODIFICATION NOTICE

A parts bulletin will be sent to you on all occasions when changes in parts occur, including interchangeable modifications between new parts and old ones.

5. NOTE

5-1. There are some different parts from those of production models among spare parts for the administrative reasons and common use of them with other models.

5-2. In respect of rubber hoses and vinyl tubes, please be sure to use them by cutting off according to the length mentioned on parts catalogue or what is actually required on the vehicle.

5-3. Note that the drawings on the illustration page are for ready reference of spare parts number, not to be used as an assembly manual.  
When assembling, use "SUZUKI SERVICE MANUAL".

6. SERIAL FRAME NUMBER

LT-Z400K3 : JSAAK47A 32100001-

LT-Z400K3 E3/E28

- 1 -

LT-Z400K3 E3/E28

- 2 -

AIR CLEANER.....	C-09	CRANKSHAFT.....	B-08	FRONT FENDER.....	G-08	LABEL.....	G-13	RADIATOR.....	D-05	RIGHT REAR WHEEL.....	I-04	WATER PUMP.....	D-04
BATTERY.....	E-10	CYLINDER HEAD COVER.....	B-03	FRONT MASTER CYLIND.....	H-09	LEFT REAR WHEEL.....	I-06	REAR BRAKE.....	G-03	SEAT.....	H-02	WIRING HARNESS.....	F-06
CAM CHAIN.....	C-06	CYLINDER HEAD.....	B-04	FRONT WHEEL.....	H-04	MAGNETO.....	E-06	REAR CALIPER.....	I-06	SIDE COVER.....	G-07		
CAM SHAFT VALVE.....	C-04	CYLINDER.....	B-06	FUEL TANK.....	G-05	MUFFLER.....	C-10	REAR COMBINATION.....	F-03	STARTER CLUTCH.....	C-02		
CARBURETOR.....	C-07	ELECTRICAL.....	E-08	GASKET SET.....	B-02	OIL HOSE.....	D-03	REAR CUSHION LEVER.....	F-03	STARTING MOTOR.....	E-07		
CLUTCH.....	E-02	FOOTREST.....	G-04	GEAR SHIFTING.....	E-08	OIL PUMP.....	D-02	REAR FENDER.....	G-12	STEERING KNUCKLE.....	H-03		
CRANK BALANCER.....	C-03	FRAME.....	G-02	HANDLE LEVER.....	G-10	OPTIONAL.....	I-08	REAR MASTER CYLIND.....	I-07	STEERING SHAFT.....	H-04		
CRANKCASE COVER.....	B-07	FRONT BRAKE HOSE.....	H-08	HANDLEBAR.....	G-08	PILOT LAMP.....	F-05	REAR SWINGING ARM.....	I-02	SUSPENSION ARM.....	H-08		
CRANKCASE.....	B-08	FRONT CALIPER.....	H-07	HEADLAMP.....	F-02	RADIATOR HOSE.....	D-06	REVERSE LOCK.....	G-09	TRANSMISSION.....	E-03		

CLICK HERE TO **DOWNLOAD** THE COMPLETE MANUAL

- Thank you very much for reading the preview of the manual.
- You can download the complete manual from: [www.heydownloads.com](http://www.heydownloads.com) by clicking the link below



- Please note: If there is no response to CLICKING the link, please download this PDF first and then click on it.

CLICK HERE TO **DOWNLOAD** THE COMPLETE MANUAL

**FIG.8**

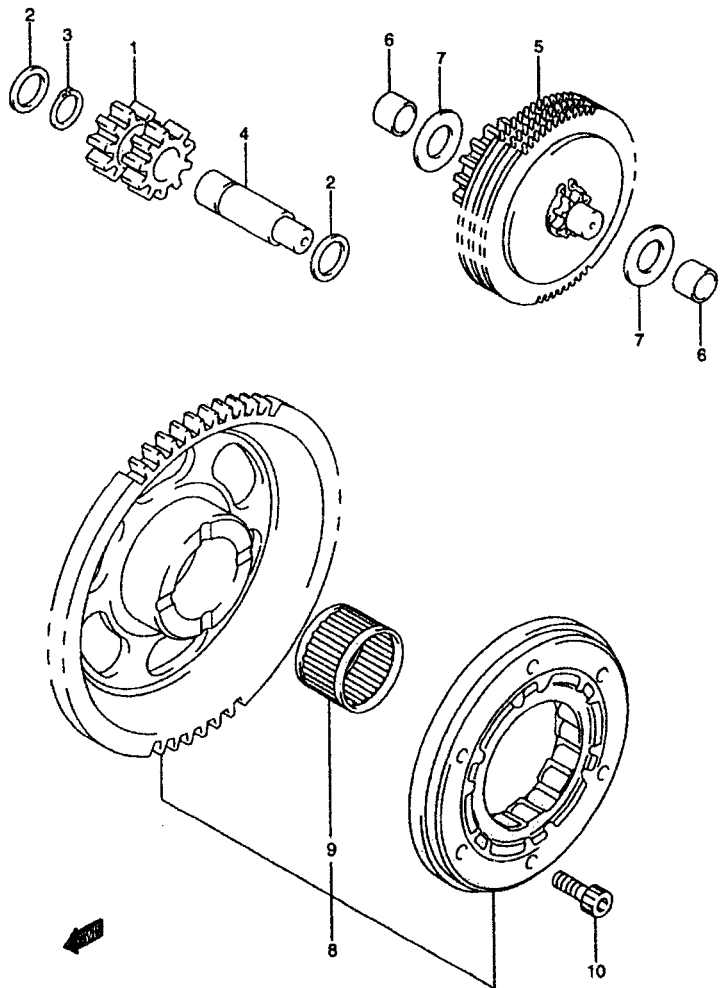


Fig.8 (C-2 ) STARTER CLUTCH

Ref #	Part Number	Description	Qty	Remarks
1	12611-07G00	GEAR, STARTER IDLE NO.1	1	
2	09181-12130	WASHER	2	
3	08331-31126	CIRCLIP	1	
4	12615-07G00	PIN	1	
5	12600-29F00	LIMITER ASSY, STARTER IDLE	1	GEAR
6	12618-31D01	BUSH	2	
7	08211-10221	WASHER	2	
8	12600-29810	CLUTCH SET, STARTER	1	
9	09263-25049	.BEARING (25X31X19)	1	
10	07130-06163	BOLT	6	

LT-Z400K3 E03 E28\_008  
STARTER CLUTCH

8 LT-Z400K3 E3 E28 © 2002 American Suzuki Motor Corporation

C2

AIR CLEANER.....	C-09	CRANKSHAFT.....	B-08	FRONT FENDER.....	G-08	LABEL.....	G-13	RADIATOR.....	D-05	RIGHT REAR WHEEL.....	I-04	WATER PUMP.....	D-04
BATTERY.....	E-10	CYLINDER HEAD COVER.....	B-03	FRONT MASTER CYLIND.....	H-09	LEFT REAR WHEEL.....	I-05	REAR BRAKE.....	G-03	SEAT.....	H-02	WRING HARNESS.....	F-06
CAM CHAIN.....	C-06	CYLINDER HEAD.....	B-04	FRONT WHEEL.....	H-08	MAGNETO.....	E-08	REAR CALIPER.....	I-06	SIDE COVER.....	G-07		
CAM SHAFT - VALVE.....	C-04	CYLINDER.....	B-05	FUEL TANK.....	G-05	MUFFLER.....	C-10	REAR COMBINATION.....	F-03	STARTER CLUTCH.....	C-02		
CARBURETOR.....	C-07	ELECTRICAL.....	E-09	GASKET SET.....	B-02	OIL HOSE.....	D-03	REAR CUSHION LEVER.....	I-03	STARTING MOTOR.....	E-07		
CLUTCH.....	E-02	FOOTREST.....	G-04	GEAR SHIFTING.....	E-05	OIL PUMP.....	D-02	REAR FENDER.....	G-12	STEERING KNUCKLE.....	H-03		
CRANK BALANCER.....	C-03	FRAME.....	G-02	HANDLE LEVER.....	G-10	OPTIONAL.....	I-08	REAR MASTER CYLINDE.....	I-07	STEERING SHAFT.....	H-04		
CRANKCASE COVER.....	B-07	FRONT BRAKE HOSE.....	H-08	HANDLEBAR.....	G-08	PILOT LAMP.....	F-05	REAR SWINGING ARM.....	I-02	SUSPENSION ARM.....	H-05		
CRANKCASE.....	B-06	FRONT CALIPER.....	H-07	HEADLAMP.....	F-02	RADIATOR HOSE.....	D-06	REVERSE LOCK.....	G-09	TRANSMISSION.....	E-03		

FIG.15

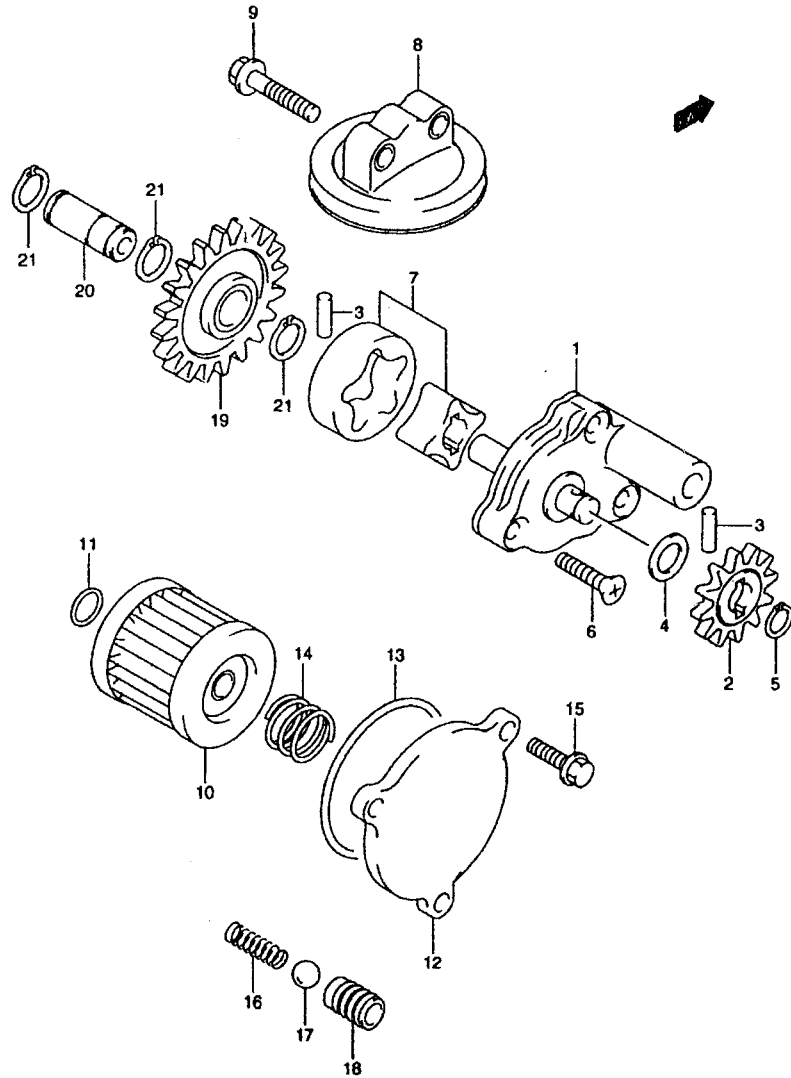


Fig.15 (D-2 ) OIL PUMP

Ref #	Part Number	Description	Qty	Remarks
1	16400-29F00	PUMP ASSY, ENGINE OIL NO.1	1	
2	16331-29F01	GEAR, DRIVEN	1	
3	09261-04009	PIN	2	
4	09181-10158	WASHER	1	
5	08331-31106	CIRCLIP	1	
6	02122-06253	SCREW	3	
7	16410-29F00	ROTOR SET, OIL PUMP NO.2	1	
8	16520-29F00	STRAINER, OIL PUMP	1	
9	01550-06253	BOLT	2	
10	16510-29F00	FILTER, ENGINE OIL	1	
11	09280-13004	O RING (D:1.9, ID:13)	1	
12	16512-47E00	CAP, OIL FILTER	1	
13	09280-54001	O RING (D:2.4, ID:52.6)	1	
14	09440-18002	SPRING	1	
15	01547-06163	BOLT	3	
16	09440-07073	SPRING	1	
17	06111-12004	BALL	1	
18	16442-29F00	SEAT, OIL CHECK VALVE	1	
19	16321-29F00	GEAR, OIL PUMP IDLE	1	
20	16322-29F00	SHAFT	1	
21	08331-31126	CIRCLIP	2	

LT-Z400K3 E03 E28\_015  
OIL PUMP

17 LT-Z400K3 E3 E28

© 2002 American Suzuki Motor Corporation

D 2

AIR CLEANER.....	C-09	CRANKSHAFT.....	B-08	FRONT FENDER.....	G-08	LABEL.....	G-13	RADIATOR.....	D-05	RIGHT REAR WHEEL...	I-04	WATER PUMP.....	D-04
BATTERY.....	E-10	CYLINDER HEAD COVER	B-03	FRONT MASTER CYLIND	H-09	LEFT REAR WHEEL...	I-05	REAR BRAKE.....	G-03	SEAT.....	H-02	WIRING HARNESS.....	F-08
CAM CHAIN.....	C-06	CYLINDER HEAD.....	B-04	FRONT WHEEL.....	H-06	MAGNETO.....	E-08	REAR CALIPER.....	I-06	SIDE COVER.....	G-07		
CAM SHAFT - VALVE...	C-04	CYLINDER.....	B-05	FUEL TANK.....	G-05	MUFFLER.....	C-10	REAR COMBINATION...	F-03	STARTER CLUTCH.....	C-02		
CARBURETOR.....	C-07	ELECTRICAL.....	E-09	GASKET SET.....	B-02	OIL HOSE.....	D-03	REAR CUSHION LEVER	I-03	STARTING MOTOR.....	E-07		
CLUTCH.....	E-02	FOOTREST.....	G-04	GEAR SHIFTING.....	E-05	OIL PUMP.....	D-02	REAR FENDER.....	G-12	STEERING KNUCKLE...	H-03		
CRANK BALANCER.....	C-03	FRAME.....	G-02	HANDLE LEVER.....	G-10	OPTIONAL.....	I-08	REAR MASTER CYLINDE	I-07	STEERING SHAFT.....	H-04		
CRANKCASE COVER....	B-07	FRONT BRAKE HOSE...	H-08	HANDLEBAR.....	G-08	PILOT LAMP.....	F-05	REAR SWINGING ARM...	I-02	SUSPENSION ARM.....	H-05		
CRANKCASE.....	B-06	FRONT CALIPER.....	H-07	HEADLAMP.....	F-02	RADIATOR HOSE.....	D-06	REVERSE LOCK.....	G-09	TRANSMISSION.....	E-03		

FIG.22

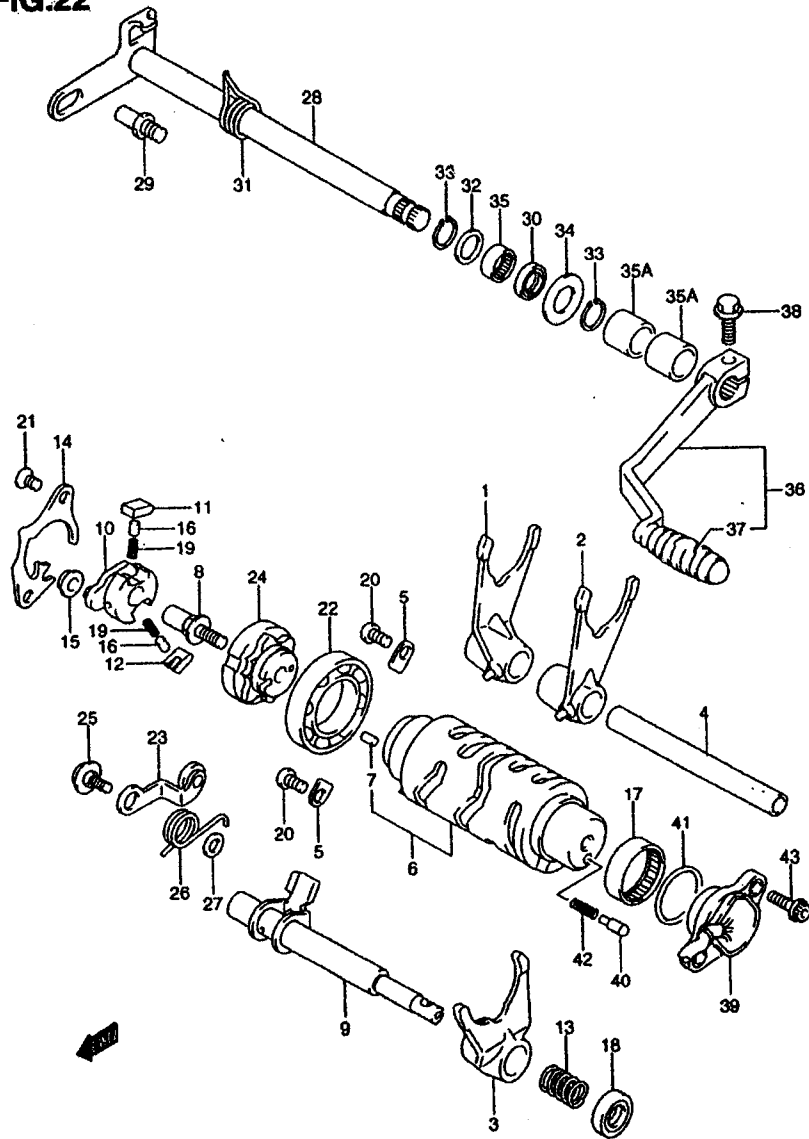


Fig.22 (E-6 ) GEAR SHIFTING

Ref #	Part Number	Description	Qty	Remarks
32	09181-14139	WASHER, GEAR SHAFT	1	14X20X1.0
33	08331-31146	CIRCLIP, GEAR SHAFT	2	
34	09160-14046	WASHER, GEAR SHIFT LH	1	14X29X1.50
35	09263-14027	BEARING, GEAR SHAFT (14X20X12)	1	
35A	09180-14016	SPACER (14X20X17.5)	2	
36	25600-07G00	LEVER ASSY, GEAR SHIFT	1	
37	25652-16500	RUBBER, GEAR PEDAL	1	
38	01550-06203	BOLT, GEAR SHIFT	1	
39	37720-07G00	BASE ASSY, GEAR SHIFT TERM	1	
40	09209-05011	CONTACT	2	
41	09280-26005	O RING (D:2.4, ID:26.2)	1	
42	09440-04010	SPRING	2	
43	07120-05163	BOLT	2	

LT-Z400K3 E03 E28\_022  
GEAR SHIFTING

26 LT-Z400K3 E3 E28

© 2002 American Suzuki Motor Corporation

E6

AIR CLEANER.....	C-09	CRANKSHAFT.....	B-08	FRONT FENDER.....	G-06	LABEL.....	G-13	RADIATOR.....	D-05	RIGHT REAR WHEEL.....	I-04	WATER PUMP.....	D-04
BATTERY.....	E-10	CYLINDER HEAD COVER.....	B-03	FRONT MASTER CYLIND.....	H-09	LEFT REAR WHEEL.....	I-05	REAR BRAKE.....	G-03	SEAT.....	H-02	WIRING HARNESS.....	F-06
CAM CHAIN.....	C-06	CYLINDER HEAD.....	B-04	FRONT WHEEL.....	H-06	MAGNETO.....	E-06	REAR CALIPER.....	I-06	SIDE COVER.....	G-07		
CAM SHAFT - VALVE.....	C-04	CYLINDER.....	B-05	FUEL TANK.....	G-05	MUFFLER.....	C-10	REAR COMBINATION.....	F-03	STARTER CLUTCH.....	C-02		
CARBURETOR.....	C-07	ELECTRICAL.....	E-09	GASKET SET.....	B-02	OIL HOSE.....	D-03	REAR CUSHION LEVER.....	I-03	STARTING MOTOR.....	E-07		
CLUTCH.....	E-02	FOOTREST.....	G-04	GEAR SHIFTING.....	E-05	OIL PUMP.....	D-02	REAR FENDER.....	G-12	STEERING KNUCKLE.....	H-03		
CRANK BALANCER.....	C-03	FRAME.....	G-02	HANDLE LEVER.....	G-10	OPTIONAL.....	I-08	REAR MASTER CYLIND.....	I-07	STEERING SHAFT.....	H-04		
CRANKCASE COVER.....	B-07	FRONT BRAKE HOSE.....	H-08	HANDLEBAR.....	G-08	PILOT LAMP.....	F-05	REAR SWINGING ARM.....	I-02	SUSPENSION ARM.....	H-05		
CRANKCASE.....	B-06	FRONT CALIPER.....	H-07	HEADLAMP.....	F-02	RADIATOR HOSE.....	D-06	REVERSE LOCK.....	G-09	TRANSMISSION.....	E-03		

FIG.30

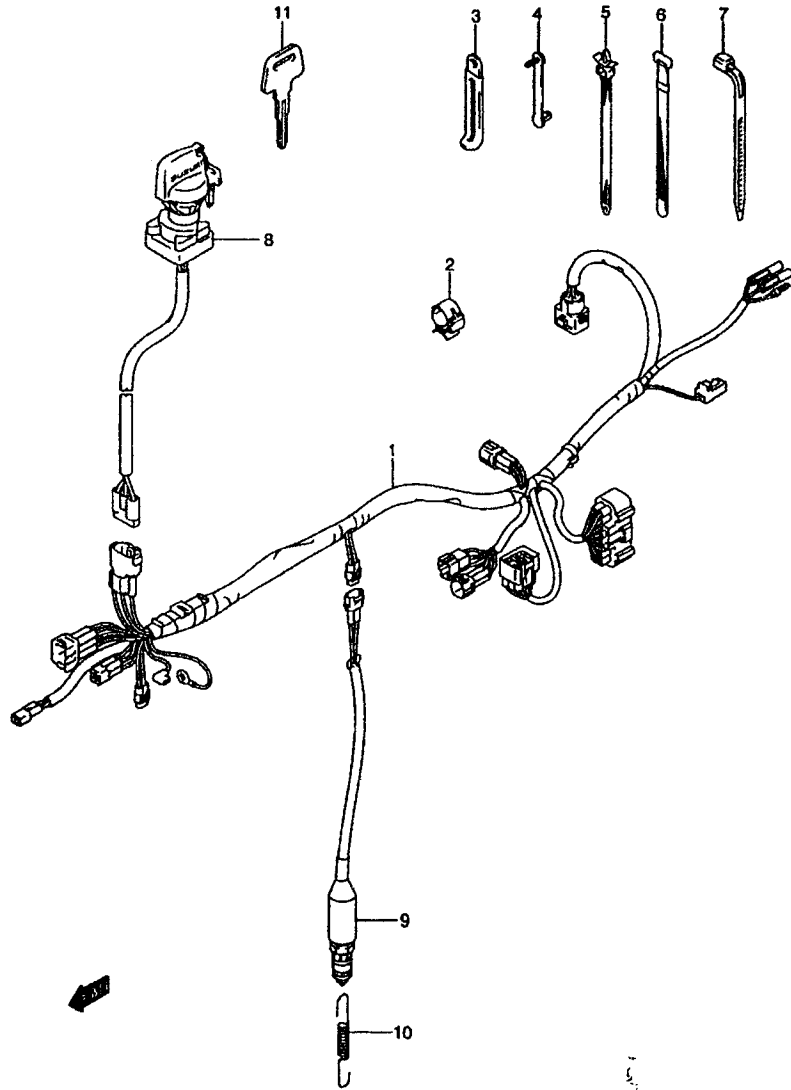


Fig.30 (F-6 ) WIRING HARNESS

Ref #	Part Number	Description	Qty	Remarks
1	36610-07G00	HARNES, WIRING	1	
2	09403-20403	CLAMP	1	
3	09404-06435	CLAMP (L:135)	1	
4	09407-03401	CLAMP (L:33)	3	
5	09407-11402	CLAMP (L:90)	1	
6	09407-12402	CLAMP (L:120)	2	
7	09407-14403	CLAMP (L:125)	1	
8	37110-07G00	SWITCH ASSY, IGNITION	1	
9	37740-07G00	SWITCH ASSY, STOP LAMP	1	
10	09443-06073	SPRING	1	
11-1	37146-19B00	KEY, BLANK (TYPE:C)	1	OPT
11-2	37146-19B10	KEY, BLANK (TYPE:D)	1	OPT
11-3	37146-19B20	KEY, BLANK (TYPE:E)	1	OPT
11-4	37146-19B30	KEY, BLANK (TYPE:F)	1	OPT

LT-Z400K3 E03 E28\_030  
WIRING HARNESS

35 LT-Z400K3 E3 E28

© 2002 American Suzuki Motor Corporation

F6

AIR CLEANER.....	C-09	CRANKSHAFT.....	B-08	FRONT FENDER.....	G-08	LABEL.....	G-13	RADIATOR.....	D-05	RIGHT REAR WHEEL.....	I-04	WATER PUMP.....	D-04
BATTERY.....	E-10	CYLINDER HEAD COVER.....	B-03	FRONT MASTER CYLIND.....	H-09	LEFT REAR WHEEL.....	I-05	REAR BRAKE.....	G-03	SEAT.....	H-02	WIRING HARNESS.....	F-06
CAM CHAIN.....	C-08	CYLINDER HEAD.....	B-04	FRONT WHEEL.....	H-08	MAGNETO.....	E-08	REAR CALIPER.....	I-06	SIDE COVER.....	G-07		
CAM SHAFT - VALVE.....	C-04	CYLINDER.....	B-05	FUEL TANK.....	G-05	MUFFLER.....	C-10	REAR COMBINATION.....	F-03	STARTER CLUTCH.....	C-02		
CARBURETOR.....	C-07	ELECTRICAL.....	E-09	GASKET SET.....	B-02	OIL HOSE.....	D-03	REAR CUSHION LEVER.....	I-03	STARTING MOTOR.....	E-07		
CLUTCH.....	E-02	FOOTREST.....	G-04	GEAR SHIFTING.....	E-05	OIL PUMP.....	D-02	REAR FENDER.....	G-12	STEERING KNUCKLE.....	H-03		
CRANK BALANCER.....	C-03	FRAME.....	G-02	HANDLE LEVER.....	G-10	OPTIONAL.....	I-08	REAR MASTER CYLIND.....	I-07	STEERING SHAFT.....	H-04		
CRANKCASE COVER.....	B-07	FRONT BRAKE HOSE.....	H-08	HANDLEBAR.....	G-08	PILOT LAMP.....	F-05	REAR SWINGING ARM.....	I-02	SUSPENSION ARM.....	H-05		
CRANKCASE.....	B-06	FRONT CALIPER.....	H-07	HEADLAMP.....	F-02	RADIATOR HOSE.....	D-06	REVERSE LOCK.....	G-09	TRANSMISSION.....	E-03		

FIG.38

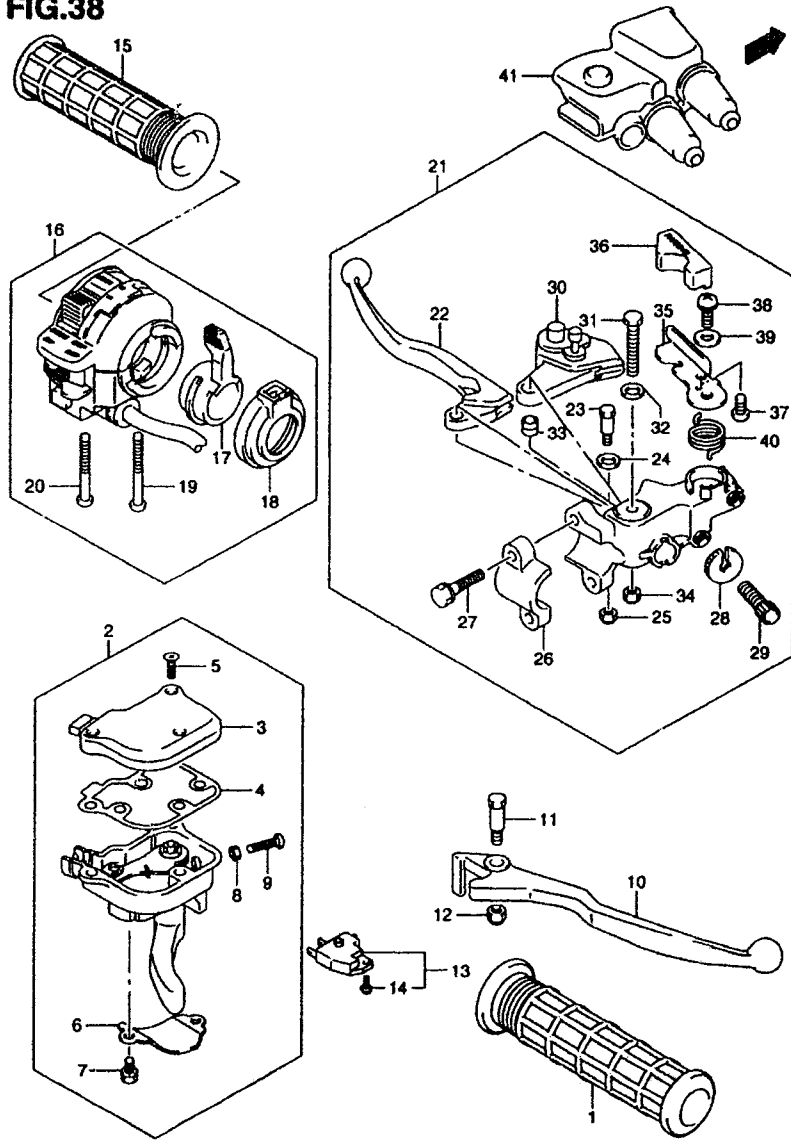


Fig.38 (G-10 ) HANDLE LEVER

Ref #	Part Number	Description	Qty	Remarks
1	57211-22A01-291	GRIP (BLACK)	1	
2	57100-07G00	CASE ASSY, THROTTLE	1	
3	57121-07G00	.CAP	1	
4	57157-07G00	.GASKET	1	
5	57128-07G00	.SCREW	3	
6	57126-07G00	.HOLDER	1	
7	57127-07G00	.BOLT	2	
8	08310-00053	.NUT	1	
9	02112-05203	.SCREW	1	
10	57421-39D20	LEVER, FRONT BRAKE	1	
11	57431-04F00	BOLT, PIVOT	1	
12	57433-09F00	NUT	1	
13	57460-17C00	SWITCH ASSY, STOP	1	
14	57465-17C00	.SCREW	1	
15	57211-22A01-291	GRIP (BLACK)	1	
16	37400-07G00	SWITCH ASSY, HANDLE LH	1	
17	37571-19B01	.LEVER, CHOKE	1	
18	37576-19B01	.COVER, CHOKE	1	
19	02112-05457	.SCREW	1	
20	02112-05407	.SCREW	1	
21	57500-07G00	HOLDER ASSY, LEVER	1	
22	57621-07G00	.LEVER	1	
23	57513-07G00	.BOLT, PIVOT	1	
24	57432-07G00	.WASHER	1	
25	08319-21063	.NUT	1	
26	57512-07G00	.HOLDER	1	
27	01547-06203	.BOLT	2	
28	57442-07G00	.NUT, ADJUSTER	2	
29	57441-45C00	.BOLT, ADJUSTER	2	
30	57800-07850	.LOCK SET, PARKING LOCK	1	
31	57431-07G00	.BOLT, PARKING LOCK	1	
32	57433-07G00	.WASHER	1	
33	57623-07G00	.SPACER	1	
34	08319-21063	.NUT	1	

LT-Z400K3 E03 E28\_038  
HANDLE LEVER

44 LT-Z400K3 E3 E28

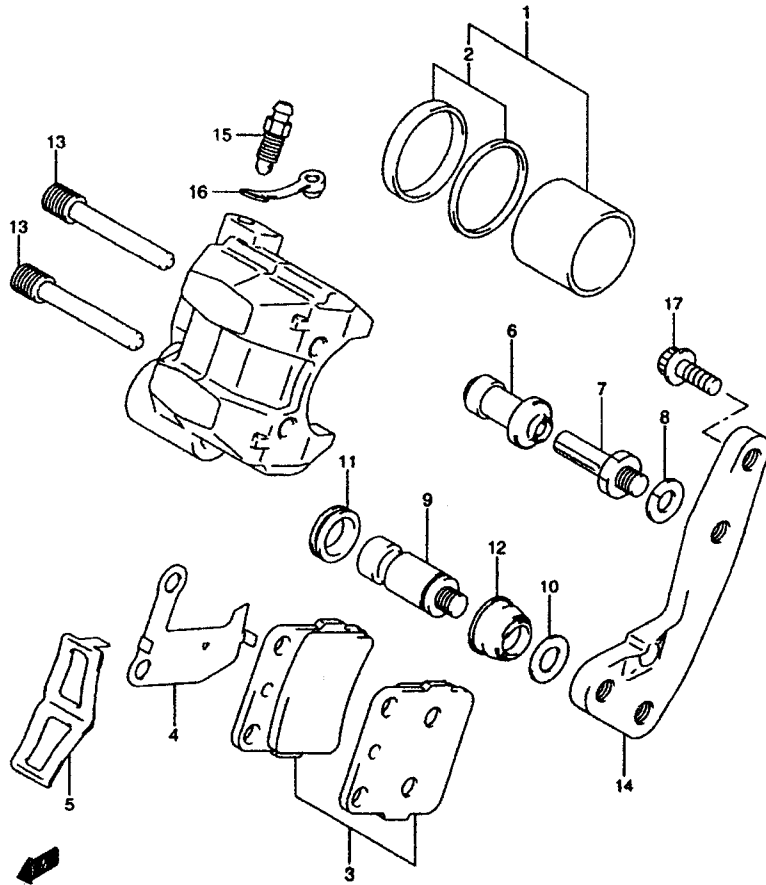
© 2002 American Suzuki Motor Corporation

G 10

AIR CLEANER.....	C-09	CRANKSHAFT.....	B-08	FRONT FENDER.....	G-06	LABEL.....	G-13	RADIATOR.....	D-05	RIGHT REAR WHEEL.....	I-04	WATER PUMP.....	D-04
BATTERY.....	E-10	CYLINDER HEAD COVER.....	B-03	FRONT MASTER CYLIND.....	H-09	LEFT REAR WHEEL.....	I-05	REAR BRAKE.....	G-03	SEAT.....	H-02	WIRING HARNESS.....	F-06
CAM CHAIN.....	C-06	CYLINDER HEAD.....	B-04	FRONT WHEEL.....	H-06	MAGNETO.....	E-08	REAR CALIPER.....	I-06	SIDE COVER.....	G-07		
CAM SHAFT - VALVE.....	C-04	CYLINDER.....	B-05	FUEL TANK.....	G-05	MUFFLER.....	C-10	REAR COMBINATION.....	F-03	STARTER CLUTCH.....	C-02		
CARBURETOR.....	C-07	ELECTRICAL.....	E-09	GASKET SET.....	B-02	OIL HOSE.....	D-03	REAR CUSHION LEVER.....	I-03	STARTING MOTOR.....	E-07		
CLUTCH.....	E-02	FOOTREST.....	G-04	GEAR SHIFTING.....	E-05	OIL PUMP.....	D-02	REAR FENDER.....	G-12	STEERING KNUCKLE.....	H-03		
CRANK BALANCER.....	C-03	FRAME.....	G-02	HANDLE LEVER.....	G-10	OPTIONAL.....	I-06	REAR MASTER CYLIND.....	I-07	STEERING SHAFT.....	H-04		
CRANKCASE COVER.....	B-07	FRONT BRAKE HOSE.....	H-08	HANDLEBAR.....	G-08	PILOT LAMP.....	F-05	REAR SWINGING ARM.....	I-02	SUSPENSION ARM.....	H-05		
CRANKCASE.....	B-06	FRONT CALIPER.....	H-07	HEADLAMP.....	F-02	RADIATOR HOSE.....	D-06	REVERSE LOCK.....	G-09	TRANSMISSION.....	E-03		

FIG.46

Fig.46 (H-7 ) FRONT CALIPER



Ref #	Part Number	Description	Qty	Remarks
	59100-38F20	CALIPER ASSY, FRONT RH	1	
	59300-38F20	CALIPER ASSY, FRONT LH	1	
1	59100-38850	.PISTON SET	2	
2	59100-38860	..SEAL SET, PISTON	2	
3	59300-42850	.PAD SET	2	
4-1	59371-13A00	.SHIM RH	1	
4-2	69372-00B20	.SHIM LH	1	
5	59315-13A00	.SPRING, PAD	2	
6	59386-13A00	.BOOT	2	
7	59382-13A00	.PIN	2	
8	59314-13A00	.WASHER	2	
9	59105-38F00	.PIN, SLIDE	2	
10	59306-13A00	.SPRING	2	
11	59384-13A00	.PLUG, DUST	2	
12	59303-13A00	.BOOT	2	
13	59345-00B20	.PIN	4	
14-1	59151-38F00	.BRACKET, RH	1	
14-2	59351-38F00	.BRACKET, LH	1	
15	59121-01A00	.BLEEDER	2	
16	59122-01A00	.CAP	2	
17	07120-08163	BOLT (8X16)	4	

LT-Z400K3 E03 E28\_046  
FRONT CALIPER

53 LT-Z400K3 E3 E28

© 2002 American Suzuki Motor Corporation

H 7

AIR CLEANER.....	C-09	CRANKSHAFT.....	B-08	FRONT FENDER.....	G-06	LABEL.....	G-13	RADIATOR.....	D-05	RIGHT REAR WHEEL.....	I-04	WATER PUMP.....	D-04
BATTERY.....	E-10	CYLINDER HEAD COVER.....	B-03	FRONT MASTER CYLIND.....	H-09	LEFT REAR WHEEL.....	I-05	REAR BRAKE.....	G-03	SEAT.....	H-02	WIRING HARNESS.....	F-06
CAM CHAIN.....	C-06	CYLINDER HEAD.....	B-04	FRONT WHEEL.....	H-08	MAGNETO.....	E-08	REAR CALIPER.....	I-06	SIDE COVER.....	G-07		
CAM SHAFT - VALVE.....	C-04	CYLINDER.....	B-05	FUEL TANK.....	G-05	MUFFLER.....	C-10	REAR COMBINATION.....	F-03	STARTER CLUTCH.....	C-02		
CARBURETOR.....	C-07	ELECTRICAL.....	E-09	GASKET SET.....	B-02	OIL HOSE.....	D-03	REAR CUSHION LEVER.....	I-03	STARTING MOTOR.....	E-07		
CLUTCH.....	E-02	FOOTREST.....	G-04	GEAR SHIFTING.....	E-05	OIL PUMP.....	D-02	REAR FENDER.....	G-12	STEERING KNUCKLE.....	H-03		
CRANK BALANCER.....	C-03	FRAME.....	G-02	HANDLE LEVER.....	G-10	OPTIONAL.....	I-08	REAR MASTER CYLUNDE.....	I-07	STEERING SHAFT.....	H-04		
CRANKCASE COVER.....	B-07	FRONT BRAKE HOSE.....	H-08	HANDLEBAR.....	G-08	PILOT LAMP.....	F-05	REAR SWINGING ARM.....	I-02	SUSPENSION ARM.....	H-05		
CRANKCASE.....	B-06	FRONT CALIPER.....	H-07	HEADLAMP.....	F-02	RADIATOR HOSE.....	D-06	REVERSE LOCK.....	G-09	TRANSMISSION.....	E-03		

FIG.55

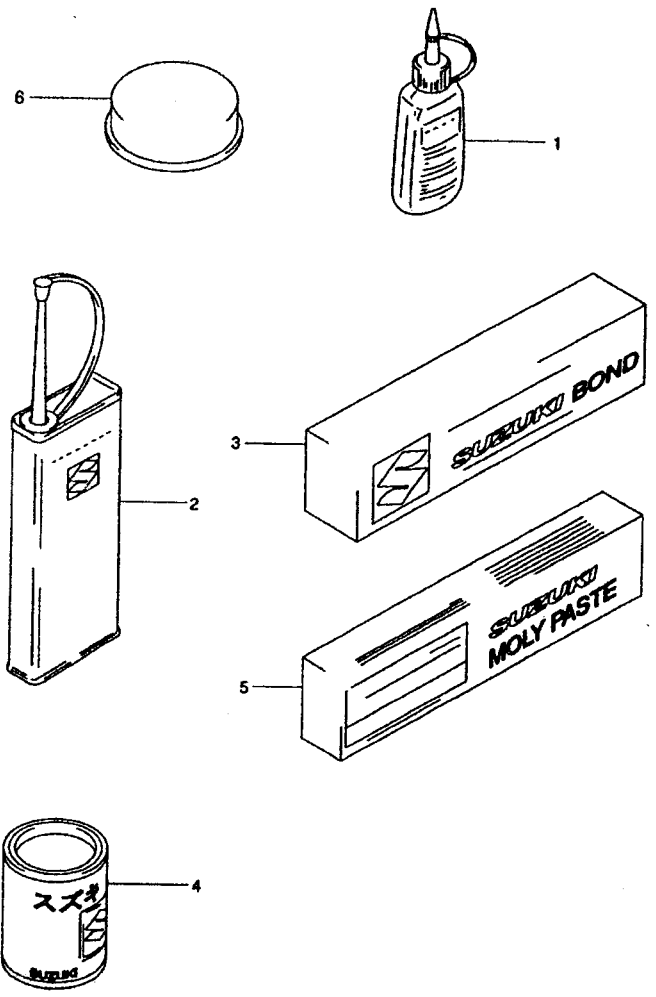


Fig.55 (I-8 ) OPTIONAL

Ref #	Part Number	Description	Qty	Remarks
1-1	99104-32030	THREAD LOCK, SUPER (1363A)	1	50G
1-2	99000-32050	THREAD LOCK, SUPER (1342)	1	50G
1-3	99000-32100	THREAD LOCK, SUPER (1305)	1	50G
1-4	99104-32020	THREAD LOCK, SUPER (1361A)	1	50G
1-5	99000-32130	THREAD LOCK, SUPER (1360)	1	50G
2	99000-32040	THREAD LOCK CEMENT	1	200G
3-1	99000-31140	SUZUKI BOND (1207B) (BLACK)	1	100G
3-2	99000-31110	SUZUKI BOND (1215)	1	100G
4	99000-25030	SUZUKI SUPER GREASE	1	150G
5	99000-25140	SUZUKI MOLY PASTE	1	50G
6	99000-25110	SUZUKI PBC GREASE	1	20G

LT-Z400K3 E03 E28\_055  
OPTIONAL

62 LT-Z400K3 E3 E28

© 2002 American Suzuki Motor Corporation

AIR CLEANER.....	C-09	CRANKSHAFT.....	B-08	FRONT FENDER.....	G-06	LABEL.....	G-13	RADIATOR.....	D-05	RIGHT REAR WHEEL.....	I-04	WATER PUMP.....	D-04
BATTERY.....	E-10	CYLINDER HEAD COVER.....	B-03	FRONT MASTER CYLIND.....	H-09	LEFT REAR WHEEL.....	I-05	REAR BRAKE.....	G-03	SEAT.....	H-02	WIRING HARNESS.....	F-06
CAM CHAIN.....	C-06	CYLINDER HEAD.....	B-04	FRONT WHEEL.....	H-06	MAGNETO.....	E-08	REAR CALIPER.....	I-08	SIDE COVER.....	G-07		
CAM SHAFT - VALVE.....	C-04	CYLINDER.....	B-05	FUEL TANK.....	G-05	MUFFLER.....	C-10	REAR COMBINATION.....	F-03	STARTER CLUTCH.....	C-02		
CARBURETOR.....	C-07	ELECTRICAL.....	E-09	GASKET SET.....	B-02	OIL HOSE.....	D-03	REAR CUSHION LEVER.....	I-03	STARTING MOTOR.....	E-07		
CLUTCH.....	E-02	FOOTREST.....	G-04	GEAR SHIFTING.....	E-05	OIL PUMP.....	D-02	REAR FENDER.....	G-12	STEERING KNUCKLE.....	H-03		
CRANK BALANCER.....	C-03	FRAME.....	G-02	HANDLE LEVER.....	G-10	OPTIONAL.....	I-08	REAR MASTER CYLINDER.....	I-07	STEERING SHAFT.....	H-04		
CRANKCASE COVER.....	B-07	FRONT BRAKE HOSE.....	H-08	HANDLEBAR.....	G-08	PILOT LAMP.....	F-05	REAR SWINGING ARM.....	I-02	SUSPENSION ARM.....	H-05		
CRANKCASE.....	B-08	FRONT CALIPER.....	H-07	HEADLAMP.....	F-02	RADIATOR HOSE.....	D-06	REVERSE LOCK.....	G-09	TRANSMISSION.....	E-03		

## **BREAK-IN PROCEDURES**

During manufacturing only the best possible materials are used and all machined parts are finished to a very high standard. It is still necessary to allow the moving parts to "BREAK-IN" before subjecting the engine to maximum stresses. The future performance and reliability of the engine depends on the care and restraint exercised during its early life. Refer to the following break-in engine speed recommendations.

- Keep to these break-in engine speed limits.

### **Break-in engine speeds**

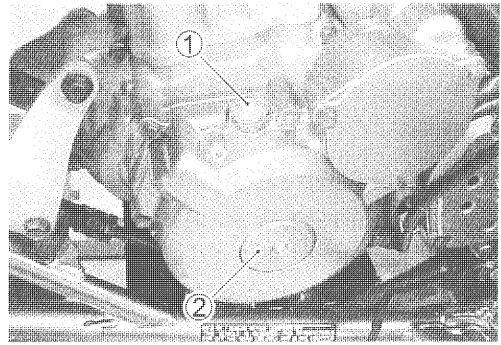
#### **Initial 10 hours: Less than ½ throttle**

- After the engine has been operated for 10 hours the engine to full throttle operation, for short periods of time.

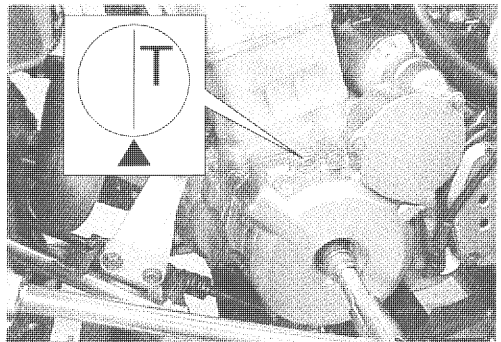
- Remove the valve timing inspection plug ① and generator cover cap ②.

**NOTE:**

- \* The piston must be at top dead center (TDC) on the compression stroke in order to check or adjust the tappet clearance.
- \* The tappet clearance should only be checked when the engine is cold.



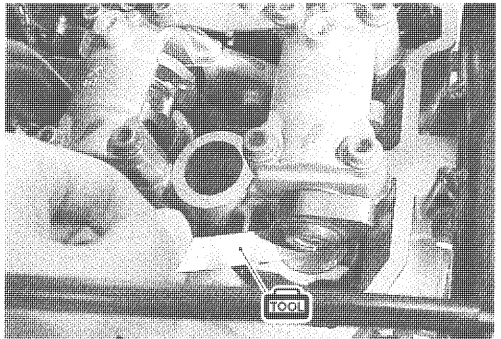
- Rotate the crankshaft with a box wrench to set the piston at TDC on the compression stroke. (Rotate the crankshaft until the "T" line on the generator rotor is aligned with the triangle mark on the generator cover.)



- Insert a thickness gauge between the tappet and the cam. If the clearance is out of specification, adjust it to the specification as follows.

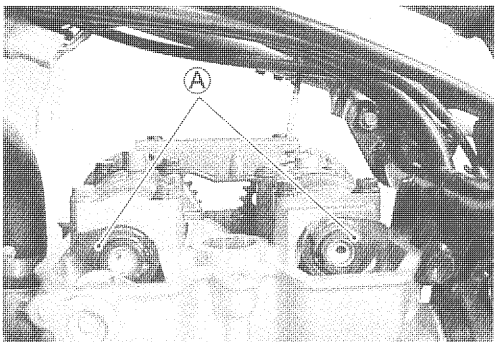
**TOOL** 09900-20803: Thickness gauge

**DATA** Tappet clearance (when cold)  
 IN: 0.10 – 0.20 mm (0.0039 – 0.0079 in)  
 EX: 0.20 – 0.30 mm (0.0079– 0.0118 in)



**NOTE:**

The cam must be at position (A) in order to check and adjust valve clearance. Clearance readings should not be taken with the cam in any other position than this position.

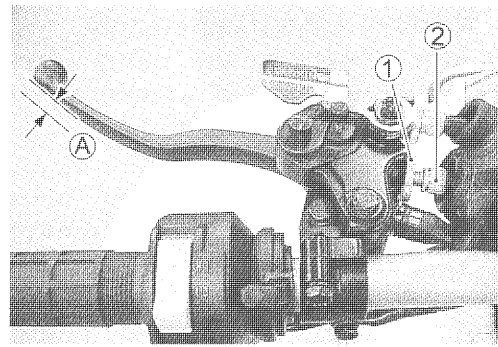


## CLUTCH

Inspect initially at 1 month and every 6 months thereafter.

- Loosen the locknut ①.
- Turn the adjuster ② in or out to obtain the correct play.
- Tighten the locknut ①.

**DATA** Clutch lever play  $\text{\textcircled{A}}$ : 10 – 15 mm (0.4 – 0.6 in)



## BRAKES

Inspect initially at 1 month and every 3 months thereafter.

### BRAKE PADS

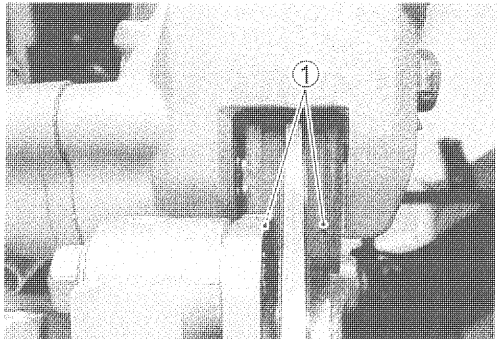
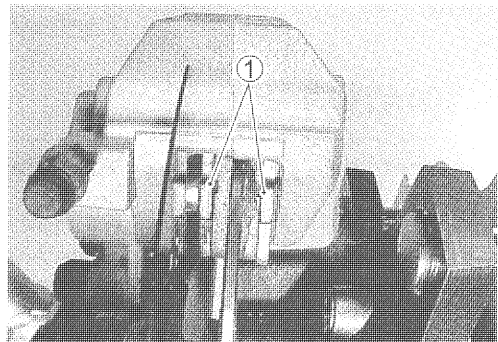
- Remove the front and rear wheels. (☞ 6-10)

The extent of brake pad wear can be checked by observing the limit line ① on the side of brake pads. When the wear reaches the limit line, replace the pads with new ones. (☞ 6-18 and 6-50)

### CAUTION

Replace the brake pads as a set, otherwise braking performance will be adversely affected.

- ☑ Brake pad mounting pin (front and rear):  
18 N·m (1.8 kgf-m, 13.0 lb-ft)

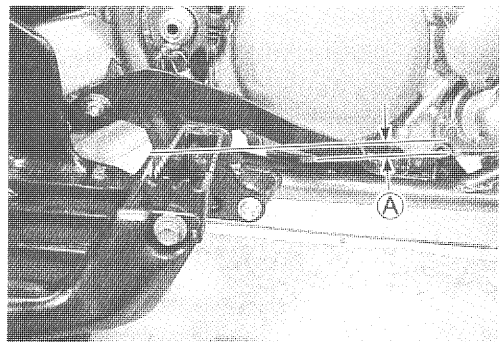


### REAR BRAKE PEDAL AND LEVER

The procedure for adjusting the rear brake pedal and brake lever is as follows:

#### NOTE:

First adjust the brake pedal, and then adjust the brake lever.

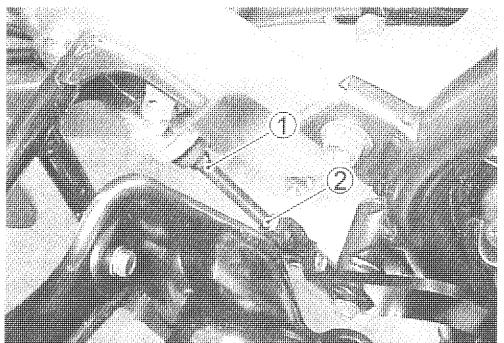


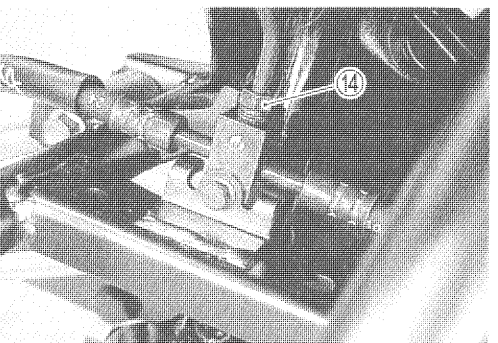
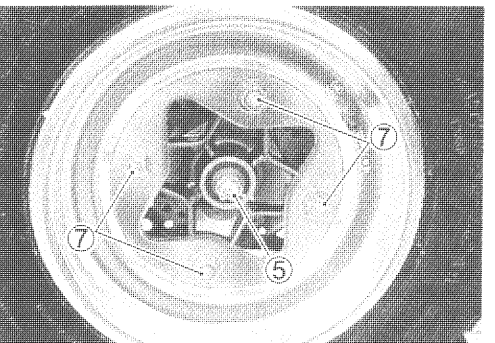
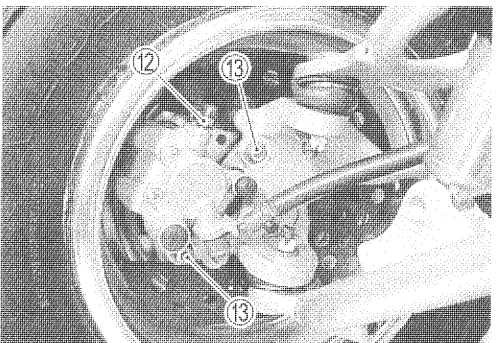
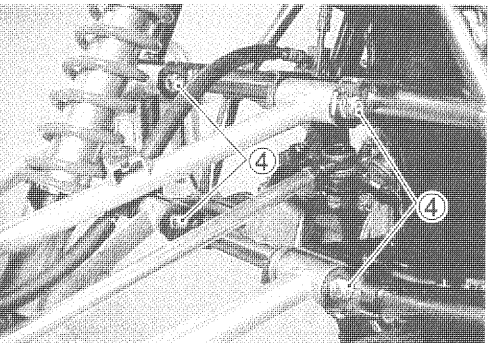
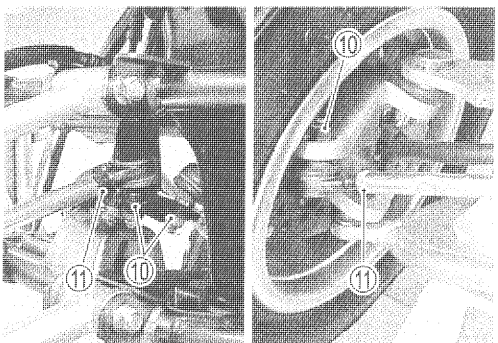
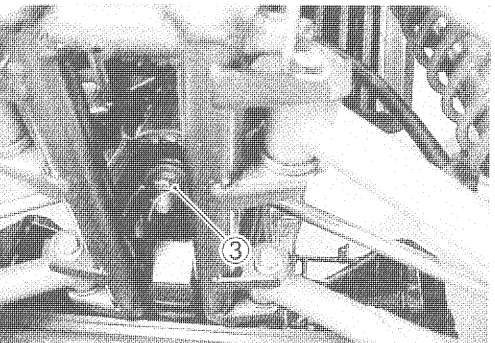
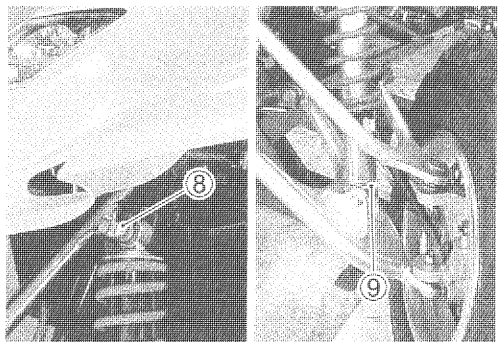
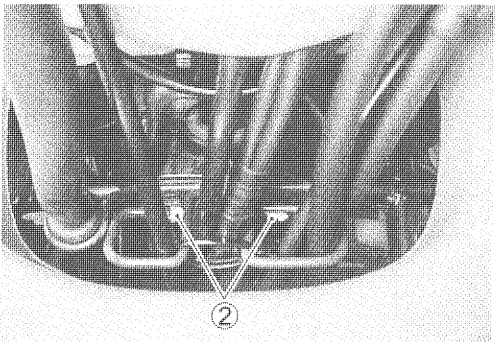
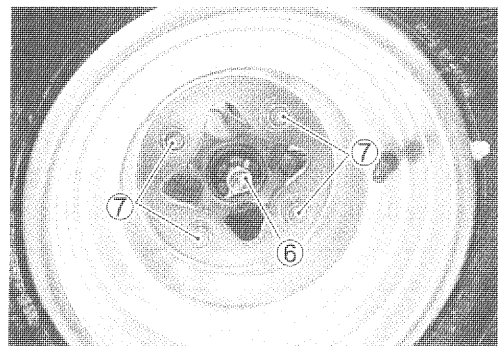
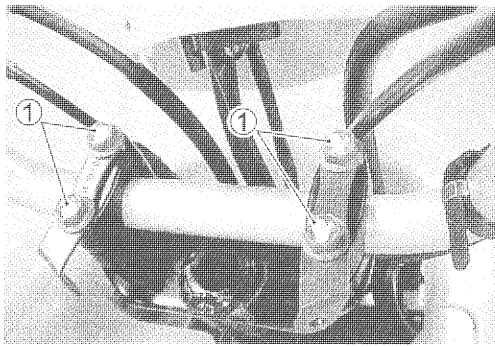
#### Brake pedal

- Turn the adjuster ① in or out until the pedal height  $\text{\textcircled{A}}$  to the specification, after loosening the locknut ②.
- Make sure to tighten the locknut ② securely.

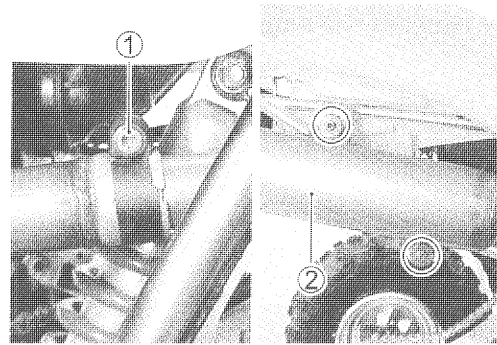
**DATA** Brake pedal height  $\text{\textcircled{A}}$ : 0 – 10 mm (0 – 0.4 in)

- ☑ Rear brake master cylinder rod locknut:  
18 N·m (1.8 kgf-m, 13.0 lb-ft)

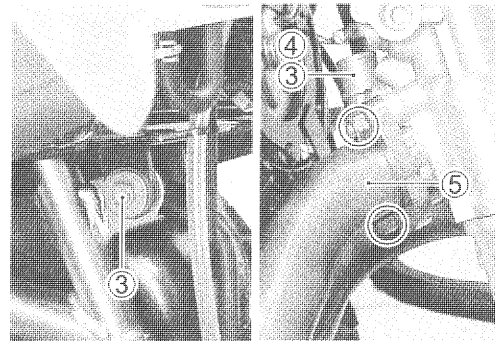




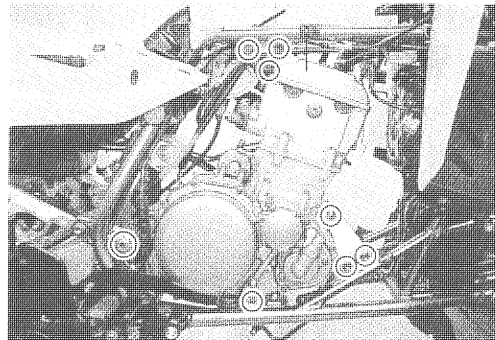
- Loosen the muffler clamp bolt ①.
- Remove the muffler ②.



- Remove the radiator lower mounting bolt ③ and push lower of the radiator forward.
- Remove the thermostat cover ④ and thermostat.
- Remove the exhaust pipe ⑤.

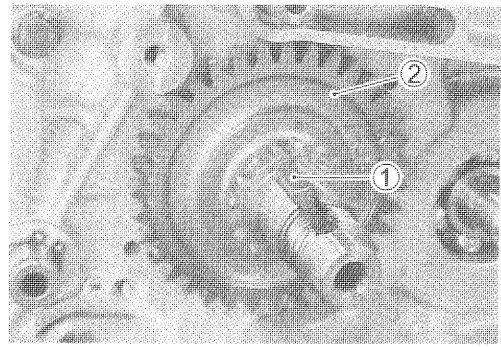


- Remove the engine mounting bolts and nut.
- Remove the engine mounting brackets.

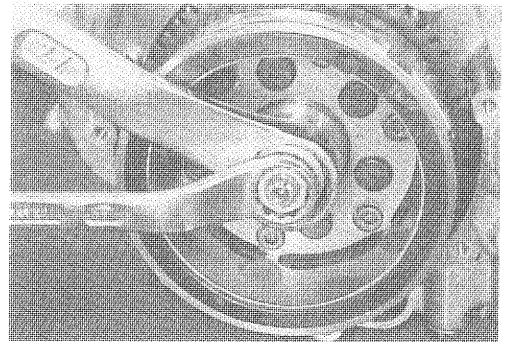


- Remove the engine from the left side.


- Remove the key ①, balancer drive gear ② and pin.



- Hold the generator rotor using a 27-mm offset wrench, and then remove the generator rotor nut.



- Remove the generator rotor using the special tool.

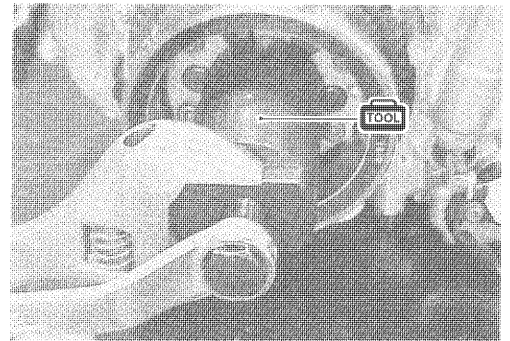
 **09930-31921: Rotor remover**

**NOTE:**

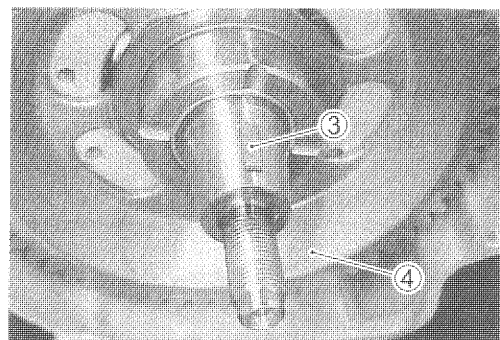
Temporarily install the generator rotor nut to the crankshaft, and then remove the generator rotor using the special tool.

**CAUTION**

Do not hit the generator rotor with a hammer, otherwise the rotor may be damaged.

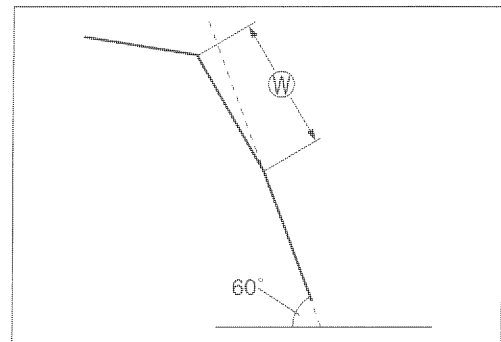
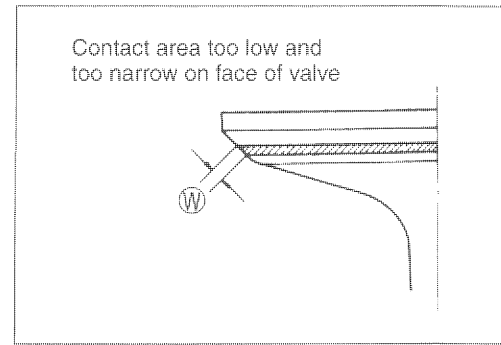


- Remove the generator rotor key ③.
- Remove the starter driven gear ④.



**FINAL SEAT CUT**

- If the contact area is too low or too narrow, use the 60° cutter to raise and widen the contact area.
- If the contact area is too high or too wide, use the 15° or 30° cutter to lower and narrow it to the correct width.
- After the desired seat position and width is achieved, use the 60° cutter very lightly to clean up any burrs caused by the previous cutting operations.

**CAUTION**

**DO NOT** use a lapping compound after the final cut is made. The finished valve seat should have a velvety smooth finish but not a highly polished or shiny one. This will provide a soft surface for the final seating of the valve which will occur during the first few seconds of engine operation.

**NOTE:**

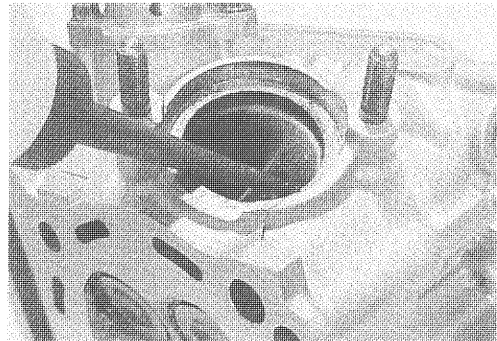
After servicing the valve seats, be sure to check the tappet clearance after the cylinder head has been installed. (☞ 2-5 to 2-9)

**VALVE SEAT SEALING CONDITION INSPECTION**

With the valve and valve spring assembled, pour a small quantity of gasoline into the intake or exhaust port. Check that no gasoline leaks through the valve seat. If leakage is found, correct the sealing surface.

**▲ WARNING**

**Gasoline is highly flammable and explosive.**  
Keep heat, sparks, and flames away from gasoline.



## STARTER TORQUE LIMITER

### CAUTION

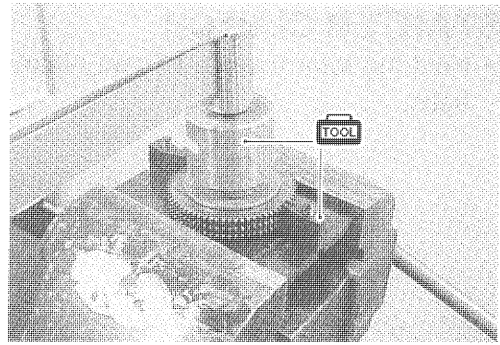
Do not attempt to disassemble the starter torque limiter. It is unserviceable.

Check the slip torque of the starter torque limiter using the special tools and vise as shown, if the slip torque is not within the specified torque, replace the starter torque limiter with a new one.

**TOOL** 09930-73170: Starter torque limiter holder  
09930-73180: Starter torque limiter socket

**TOOL** Slip torque:

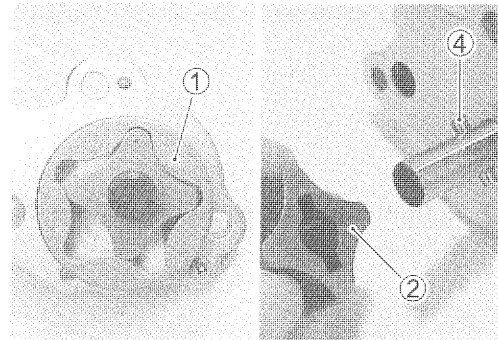
30 – 55 N·m (3.0 – 5.5 kgf·m, 21.5 – 40.0 lb·ft)



## OIL PUMP

- Remove the outer rotor ①, inner rotor ② and pin ④.

Inspect the outer rotor ① and inner rotor ② for any scratches or other damage. If any damages are found, replace them with new ones.

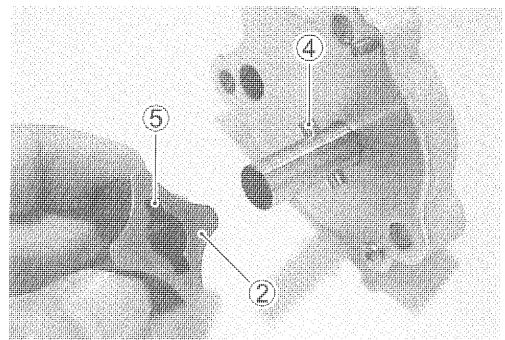
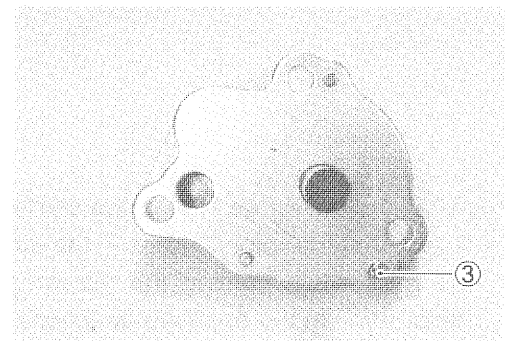


### CAUTION

The oil pump case securing screw ③ is applied with SUZUKI THREAD LOCK SUPER "1303". If an attempt is made to overhaul the oil pump assembly, the screw may be damaged. Only the oil pump unit is available as a replacement.

**1303** 99000-32030: THREAD LOCK SUPER "1303"

- Apply engine oil to the sliding surfaces of the oil pump inner rotor, outer rotor and shaft.
- When installing the inner rotor ②, align the pin ④ with the groove ⑤.



## CLUTCH COVER

### OIL FILTER

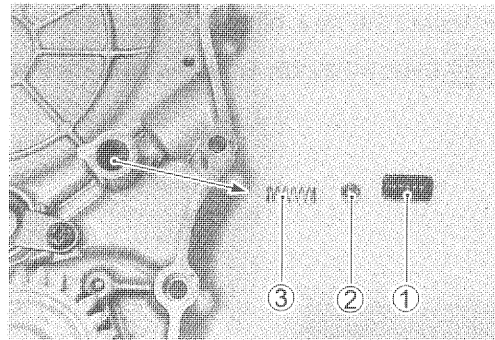
🔧 2-13

### WATER PUMP

🔧 5-13

### OIL CHECK VALVE

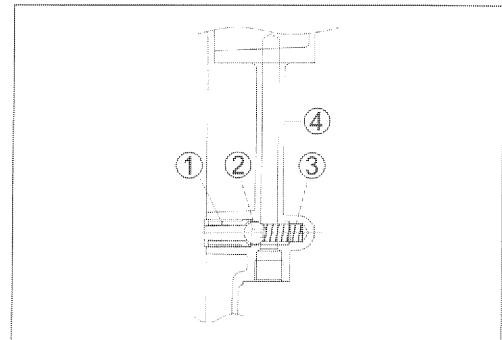
- Remove the bushing ①, oil check valve ball ② and spring ③.



- Install the spring ③, oil check valve ball ② and bushing ① to the clutch cover ④ as shown.


#### CAUTION

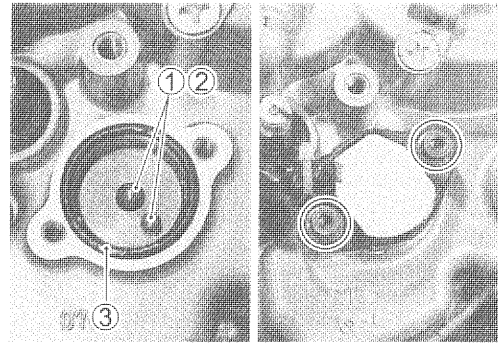
The rubber part of bushing ① must face to the outside.



## NEUTRAL SWITCH

- Install the springs ①, contacts ② and new O-ring ③.
- Install the neutral switch and tighten the bolts to the specified torque.

 **Neutral switch bolt: 6.5 N·m (0.65 kgf-m, 4.7 lb-ft)**

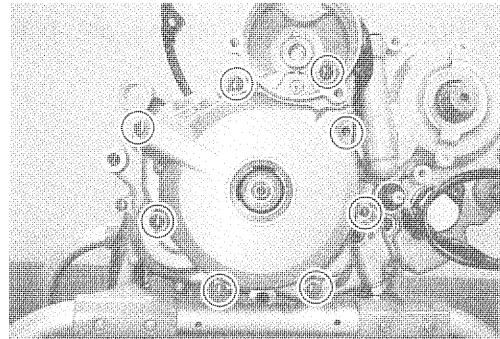
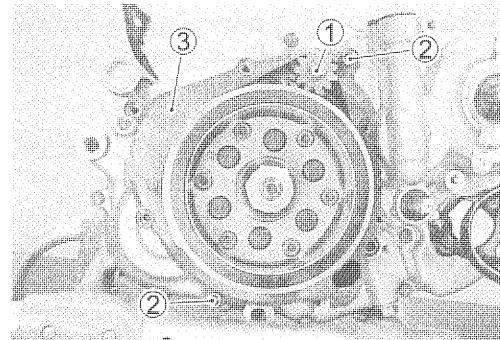


## GENERATOR ROTOR COVER

- Install the starter driven gear ①, dowel pins ②, and new gasket ③.

### CAUTION

Use a new gasket to prevent oil leakage.



- Tighten the generator rotor cover bolts securely.

CLICK HERE TO **DOWNLOAD** THE COMPLETE MANUAL

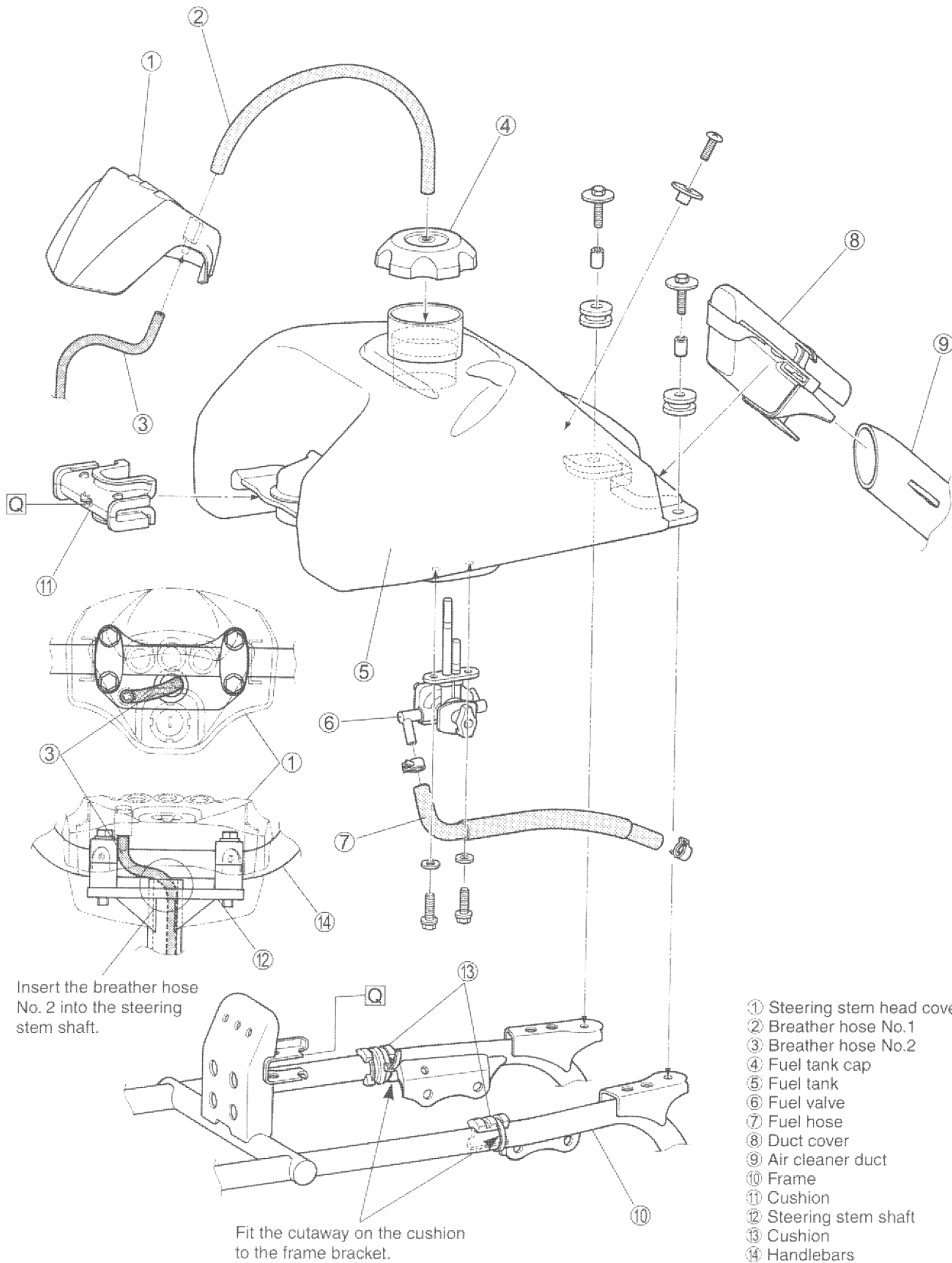
- Thank you very much for reading the preview of the manual.
- You can download the complete manual from: [www.heydownloads.com](http://www.heydownloads.com) by clicking the link below



- Please note: If there is no response to CLICKING the link, please download this PDF first and then click on it.

CLICK HERE TO **DOWNLOAD** THE COMPLETE MANUAL

# FUEL TANK CONSTRUCTION



## CLEANING

### ▲ WARNING

Some carburetor cleaning chemicals, especially dip-type soaking solutions, are very corrosive and must be handled carefully. Always follow the chemical manufacturer's instructions on proper use, handling and storage.

- Clean all jets with a spray-type carburetor cleaner and dry them using compressed air.
- Clean all circuits of the carburetor thoroughly – not just the perceived problem area. Clean the circuits in the carburetor body with a spray-type cleaner. If necessary, soak each circuit in a dip-type cleaning solution to loosen dirt and varnish. Dry the carburetor body using compressed air.

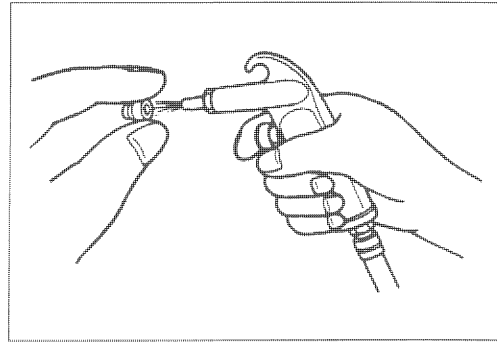
### CAUTION

Do not use a wire to clean the jets or passageways. If wire is used, the jets and passageways may become damaged. If the components cannot be cleaned with a spray-type cleaner it may be necessary to soak the components in a dip-type cleaning solution. Always follow the chemical manufacturer's instructions for proper use and cleaning of the carburetor components.

- After cleaning, reassemble the carburetor with new O-rings.

### CAUTION

Replace the removed O-rings with new ones.

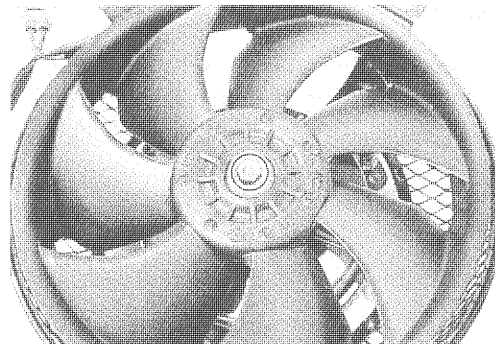


## INSPECTION

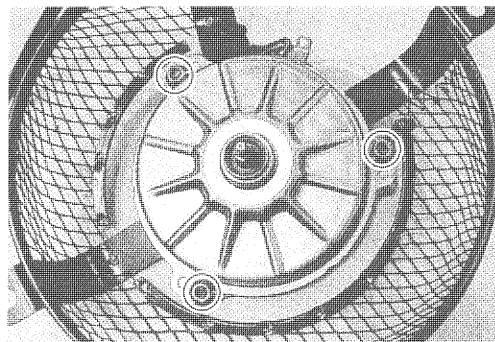
Check the following items for any damage or clogging. If any damages are found, replace the damaged parts with new ones.

- |                                |                                  |
|--------------------------------|----------------------------------|
| * Pilot jet                    | * Piston valve                   |
| * Main jet                     | * Starter jet                    |
| * Main air jet                 | * O-ring                         |
| * Pilot air jet                | * Throttle valve                 |
| * Needle jet air bleeding hole | * Diaphragm                      |
| * Float                        | * Pilot outlet and by-pass ports |
| * Needle valve                 | * Vacuum hose                    |
| * Valve seat                   | * Air vent hose                  |
| * Jet needle                   | * Over flow hose                 |
| * Needle jet                   |                                  |
| * Needle jet holder            |                                  |

- Remove the cooling fan.



- Remove the cooling fan motor.



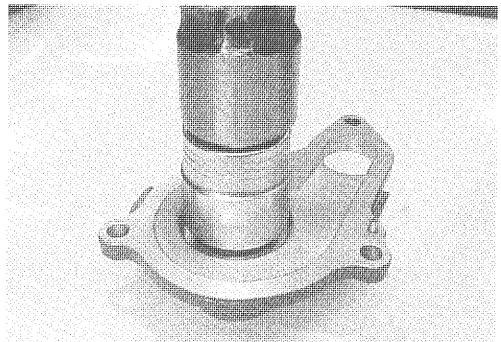
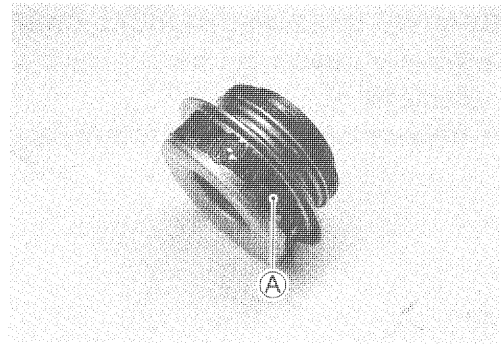
## REMOUNTING

Remount the cooling fan in the reverse order of removal.

- Install the new mechanical seal using a suitable size socket wrench.

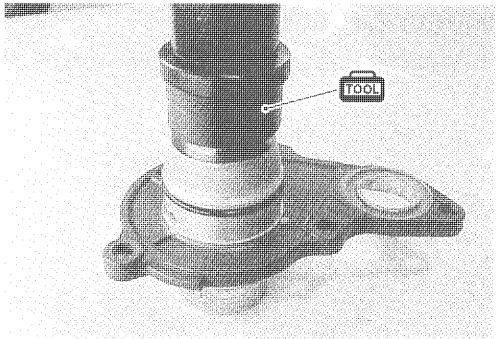
**NOTE:**

On the new mechanical seal, the sealer (A) has been applied.



- Install the new bearing using the special tool.

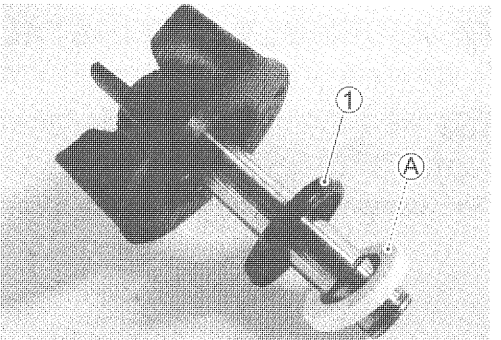
 **09913-70210: Bearing installer set**




- Install the rubber seal (1) into the impeller.
- After wiping off the oily or greasy matter from the mechanical seal ring, install it into the impeller.

**NOTE:**

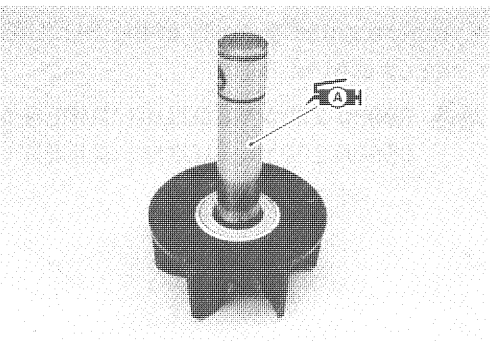
The paint marked side (A) of the mechanical seal ring faces the impeller.



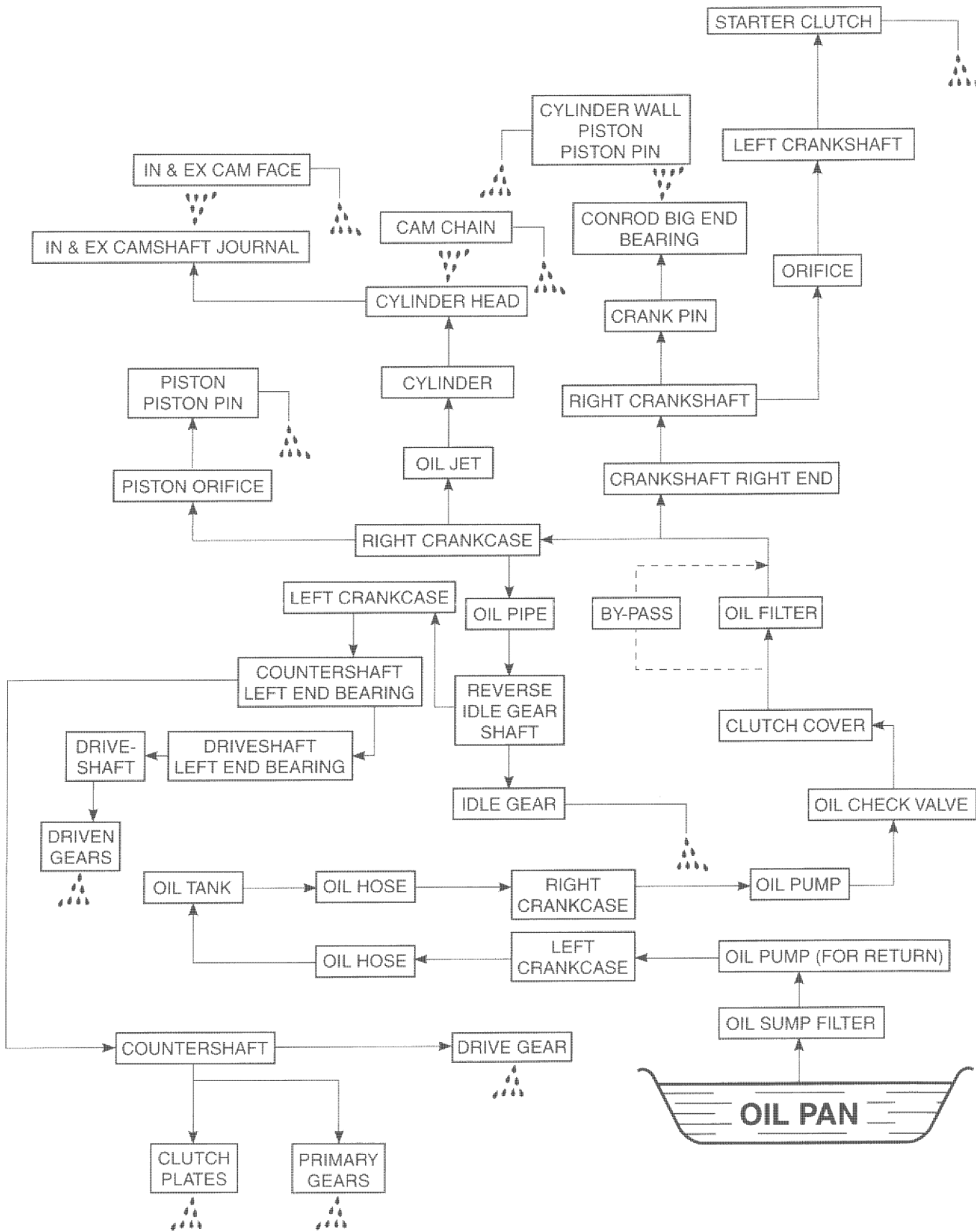
- Apply grease to the impeller shaft.

 **99000-25030: SUZUKI SUPER GREASE "A" (USA)**  
**99000-25010: SUZUKI SUPER GREASE "A" (Others)**

- Install the impeller shaft to the water pump body.



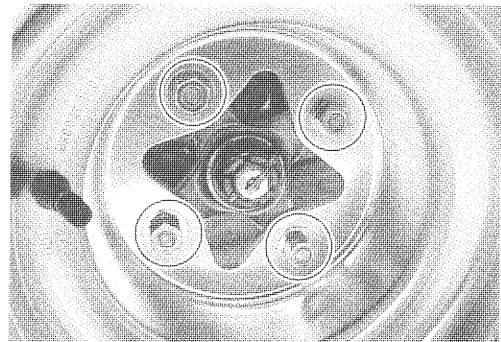
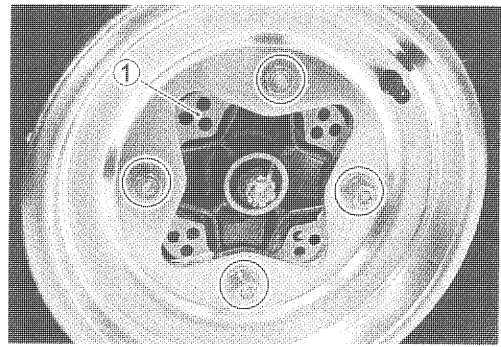
# ENGINE LUBRICATION SYSTEM CHART



## REMOVAL

### FRONT AND REAR WHEELS

- Place the vehicle on level ground.
- Support the vehicle with a jack or wooden block.
- Remove the wheel.
- Remove the front hub plate ①.

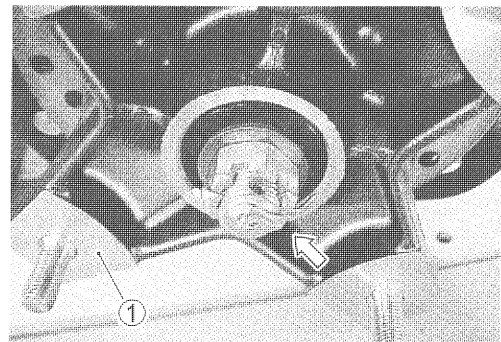


### FRONT WHEEL HUB

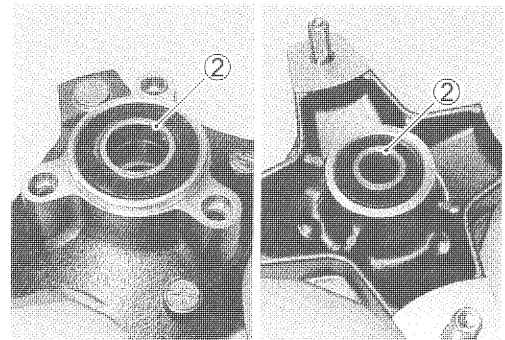
- Remove the front wheel. (☞ See above)
- Remove the cotter pin, then loosen the wheel hub nut.
- Remove the wheel hub nut and washer.
- Remove the front brake caliper. (☞ 6-19)
- Remove the front wheel hub ①.

#### CAUTION

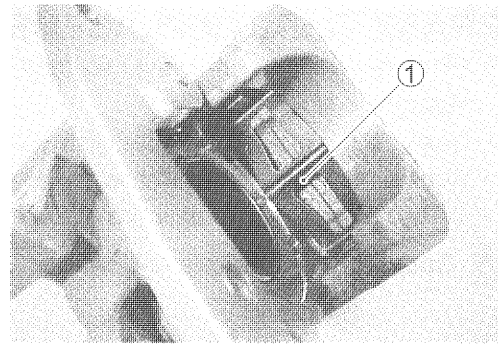
Do not operate the brake lever while removing the caliper.



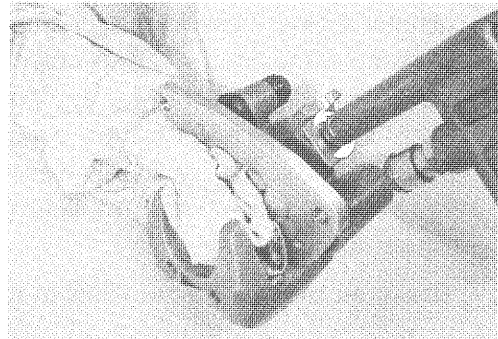
- Remove the disc. (☞ 6-24)
- Remove the spacers ②.



- Remove the spring ①.



- Place a rag over the brake caliper piston to prevent the piston from popping out and then force out the piston using compressed air.



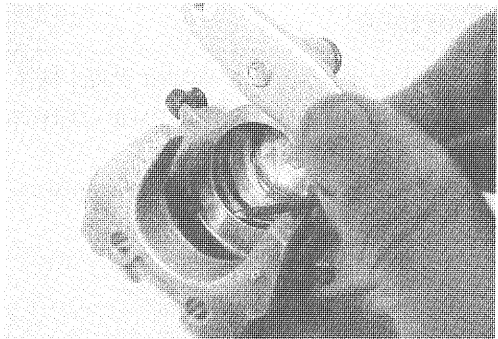
**CAUTION**

**Do not use high pressure air to prevent brake caliper piston damage.**

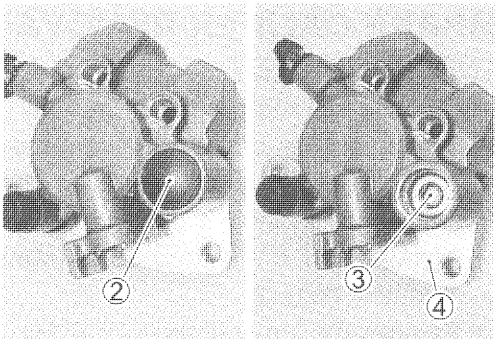
- Remove the dust seal and piston seal.

**CAUTION**

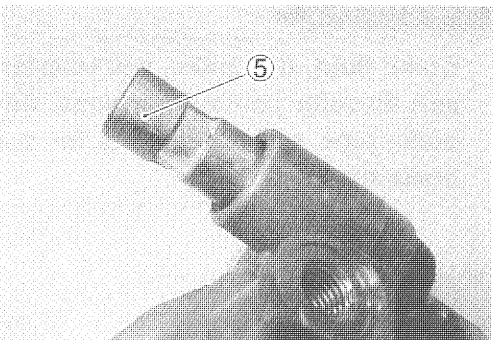
**Do not reuse the dust seal and piston seal to prevent fluid leakage.**



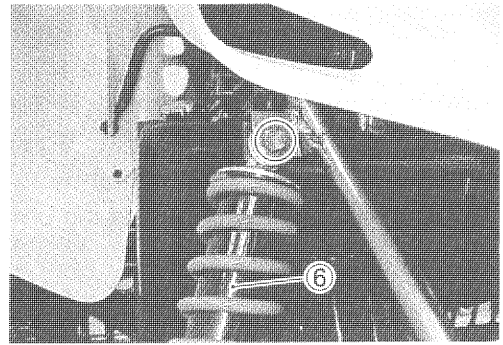
- Remove the cap ② and loosen the brake caliper holder slide pin ③.
- Remove the brake caliper holder ④.



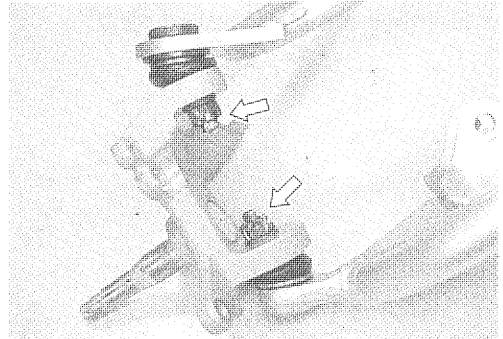
- Remove the brake caliper holder slide pin ⑤.



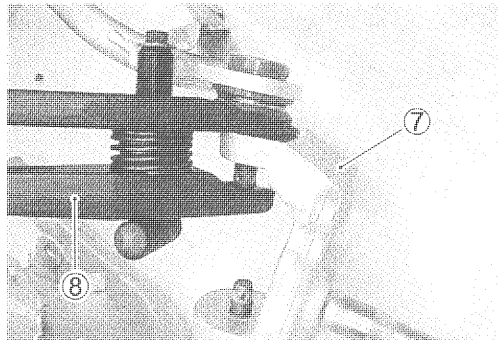
- Remove the shock absorber ⑥.



- Remove the cotter pins and nuts.

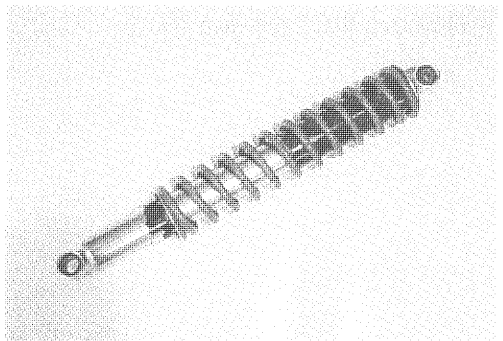


- Remove the steering knuckle ⑦ with a commercially available ball bearing joint remover ⑧.

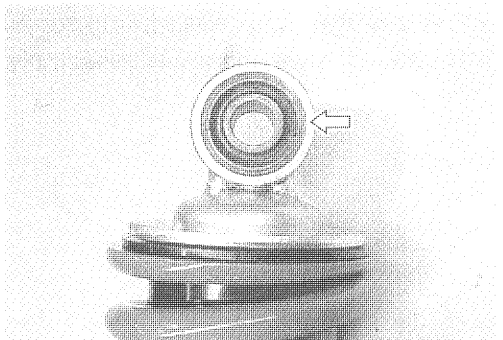


## INSPECTION AND DISASSEMBLY FRONT SHOCK ABSORBER

Inspect the shock absorber for oil leakage or damage. If any damages are found, replace the front shock absorber with a new one.



Inspect the rubber bushing for wear or damage. If any damages are found, replace the shock absorber with a new one.

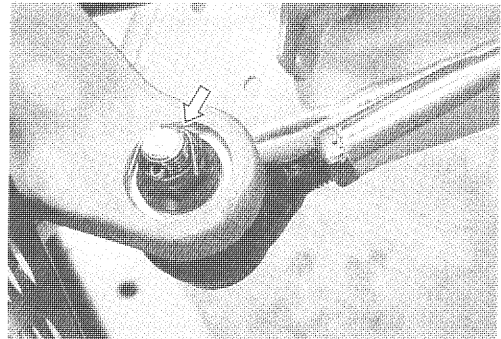
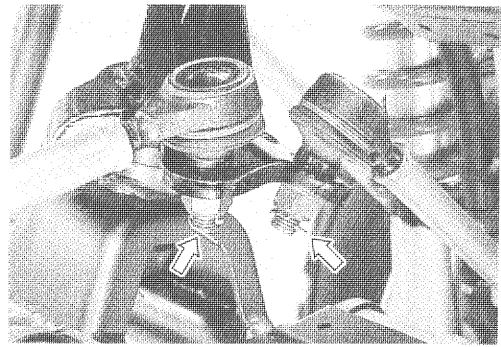


- Remove the cotter pins and tie rod end nuts.

**CAUTION**

Replace the removed cotter pins with new ones.

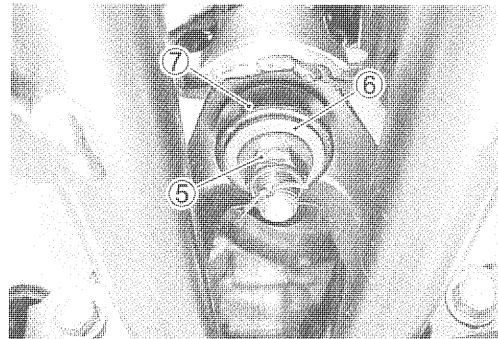
- Remove the tie rods.



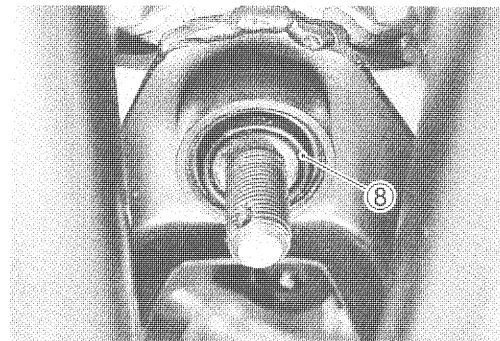
- Remove the cotter pin and steering shaft nut (5), washer (6) and dust seal (7).

**CAUTION**

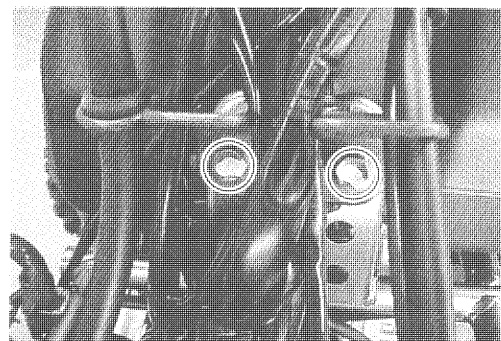
Replace the removed cotter pins with new ones.



- Remove the O-ring (8).

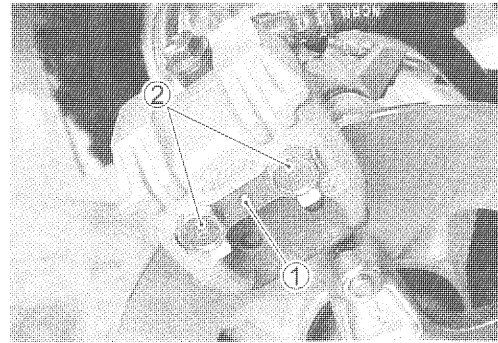


- Remove the steering shaft holder bolts.
- Remove the cable/hose guide and the steering shaft holder half.

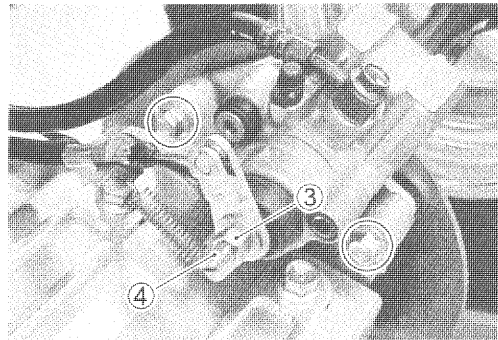


## BRAKE PAD REPLACEMENT

- Flatten the lock washer ①, and then slightly loosen the pad mounting pins ②.



- Loosen the locknut ③ and turn out the parking brake adjuster ④ several turns.
- Remove the caliper.
- Remove the brake pads by removing the pad mounting pins.



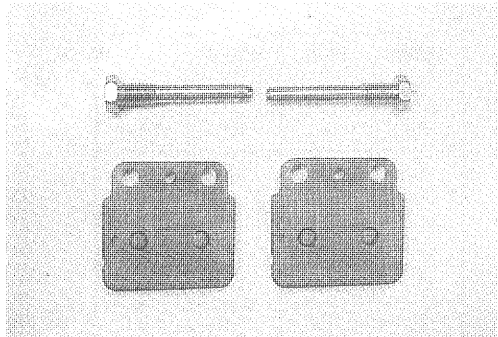
### CAUTION

- \* Do not operate the brake pedal while dismantling the pads.
- \* Replace the brake pads as a set, otherwise braking performance will be adversely affected.

- Install the new brake pad.

### NOTE:

- \* Before installing the new pads, inspect the pad mounting pins for wear. If excessive wear is found, replace them with new ones.
- \* Be sure to loosen the parking brake adjuster before installing the pads.

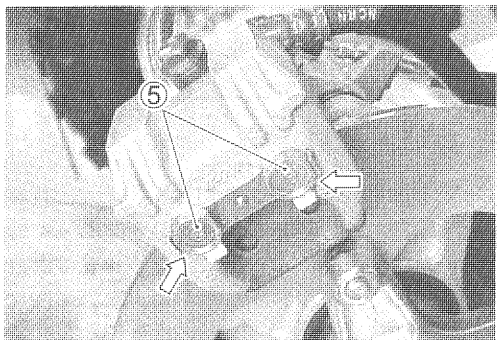


- Tighten the pad mounting pins ⑤ to the specified torque, and then bend the lock washer.

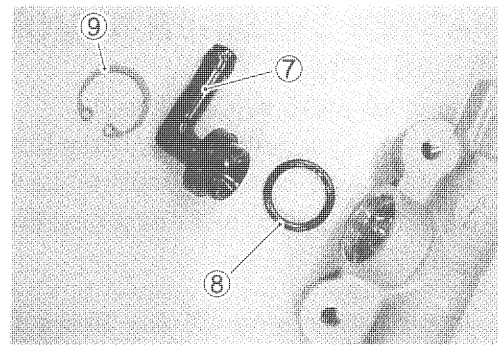
### Pad mounting pin: 18 N·m (1.8 kgf-m, 13.0 lb-ft)

### NOTE:

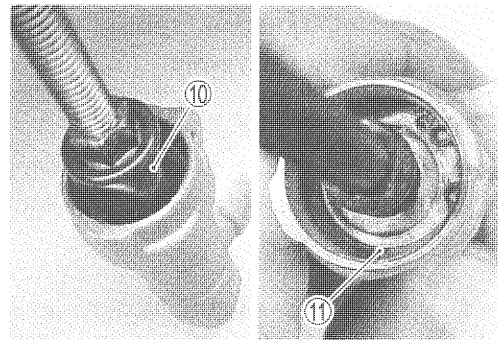
After replacing the brake pads, pump the brake pedal several times to check for proper brake operation and then check the brake fluid level.



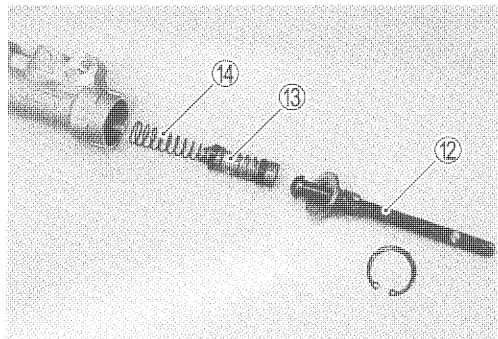
- Remove the connector ⑦ and O-ring ⑧ by removing the snap ring ⑨.



- Remove the dust boot ⑩.
- Remove the snap ring ⑪.



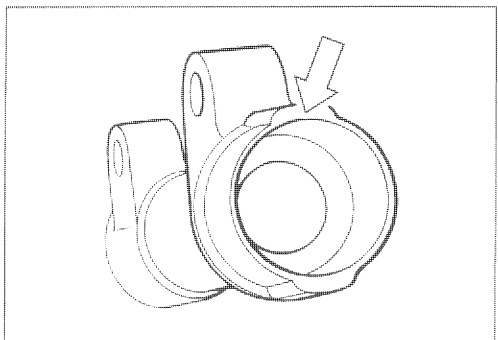
- Remove the push rod ⑫, piston/primary cup ⑬ and spring ⑭.



## MASTER CYLINDER INSPECTION

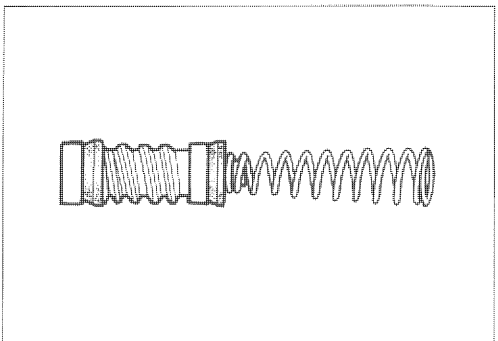
### MASTER CYLINDER

Inspect the master cylinder bore for any scratches or damage. If any damages are found, replace the master cylinder with a new one.



### PISTON AND RUBBER PARTS

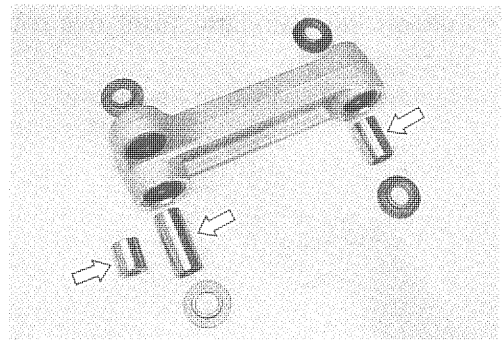
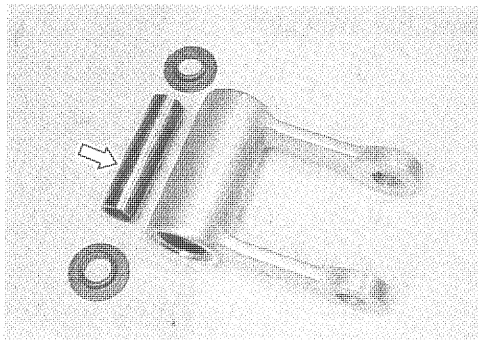
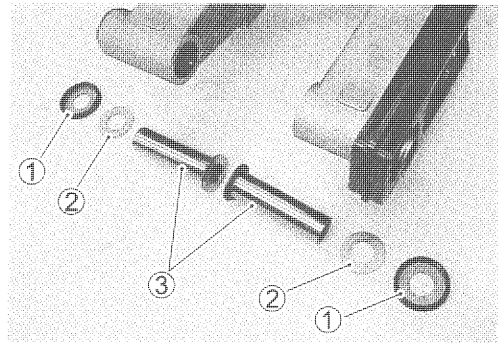
Inspect the piston surface, primary cup, secondary cup and dust boot for any scratches, wear or damage. If any damages are found, replace them with a new one.



## INSPECTION AND DISASSEMBLY

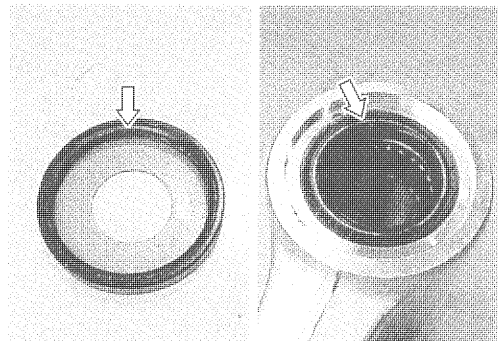
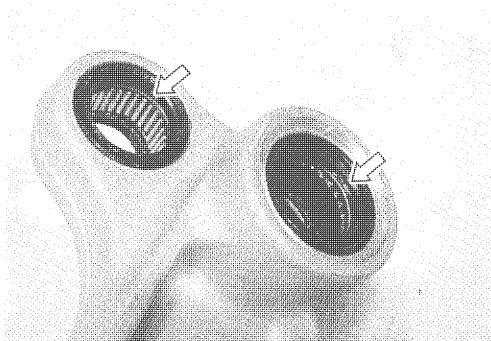
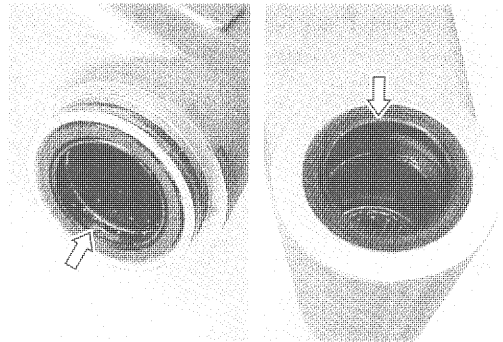
### SPACER

- Remove the dust covers ①, washers ② and spacers ③ from the swingarm.
- Remove the spacers from the cushion lever and cushion rod.
- Inspect the spacers for any flaws or other damage. If any defects are found, replace the spacers with new ones.



### DUST SEAL

- Inspect the dust seals for wear or damage. If any defect are found, replace them with new ones.

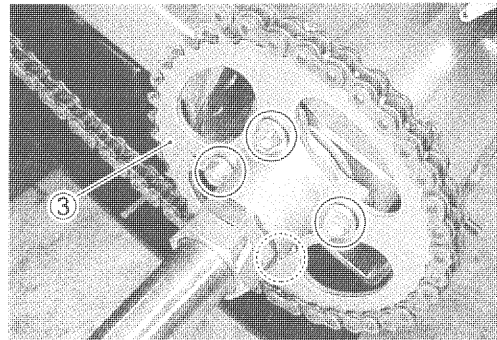
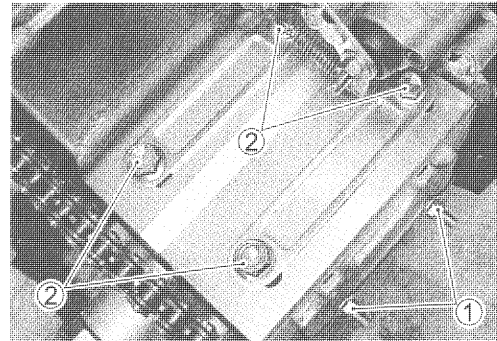


## REMOVAL

- Place the vehicle on the level ground and support the vehicle with a jack or wooden block.

## SPROCKET

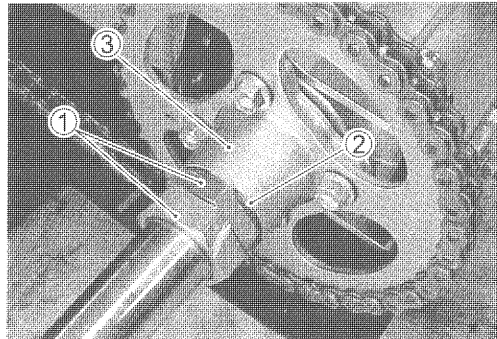
- Remove the left rear wheel. (☞ 6-10)
- Remove the left rear wheel hub. (☞ 6-11)
- Remove the rear caliper.
- Loosen the chain adjust nuts ① and the rear axle housing bolts ②.
- Loosen the sprocket mounting bolts, and remove the sprocket ③.



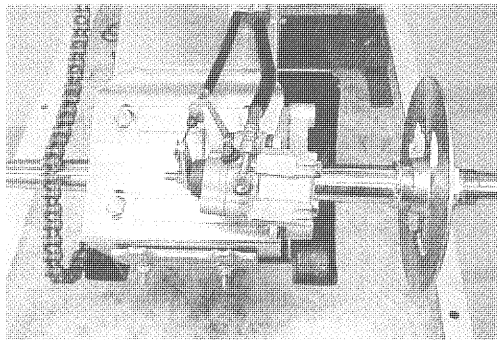
## REAR AXLE SHAFT

- Remove the rear wheels. (☞ 6-10)
- Remove the rear wheel hubs. (☞ 6-11)
- Loosen the axle nuts ① with the special tool by applying the rear brake.
- Remove the axle nuts and concave washers ②.
- Remove the sprocket flange ③.

 **09940-92450: Rear axle nut holder**



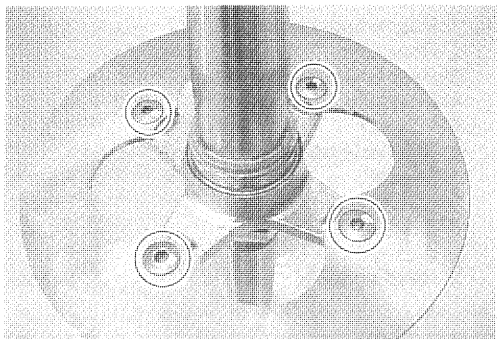
- Remove the caliper.
- Draw out the rear axle shaft to the right.



- Remove the brake disc.

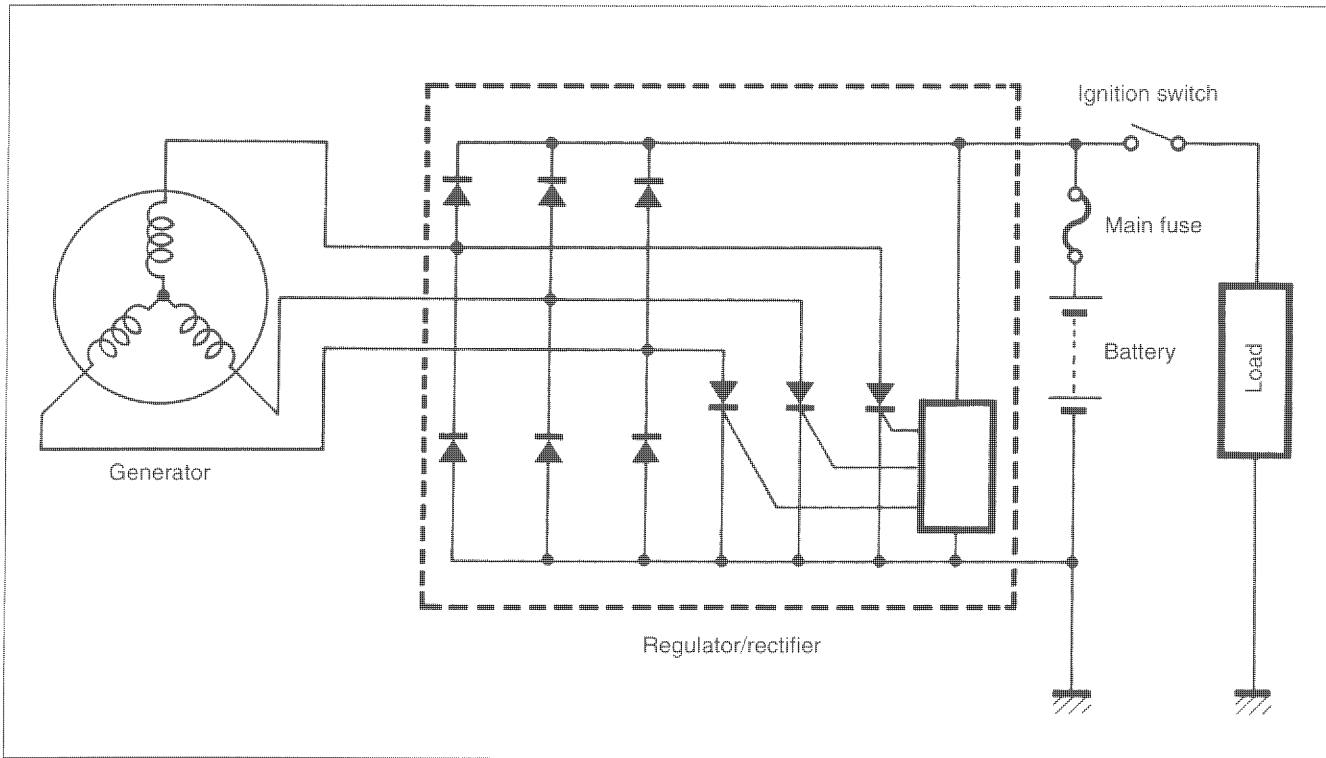
## CAUTION

Do not attempt to remove the brake disc flange from the rear axle shaft.  
The rear axle shaft is available only as an assembly.

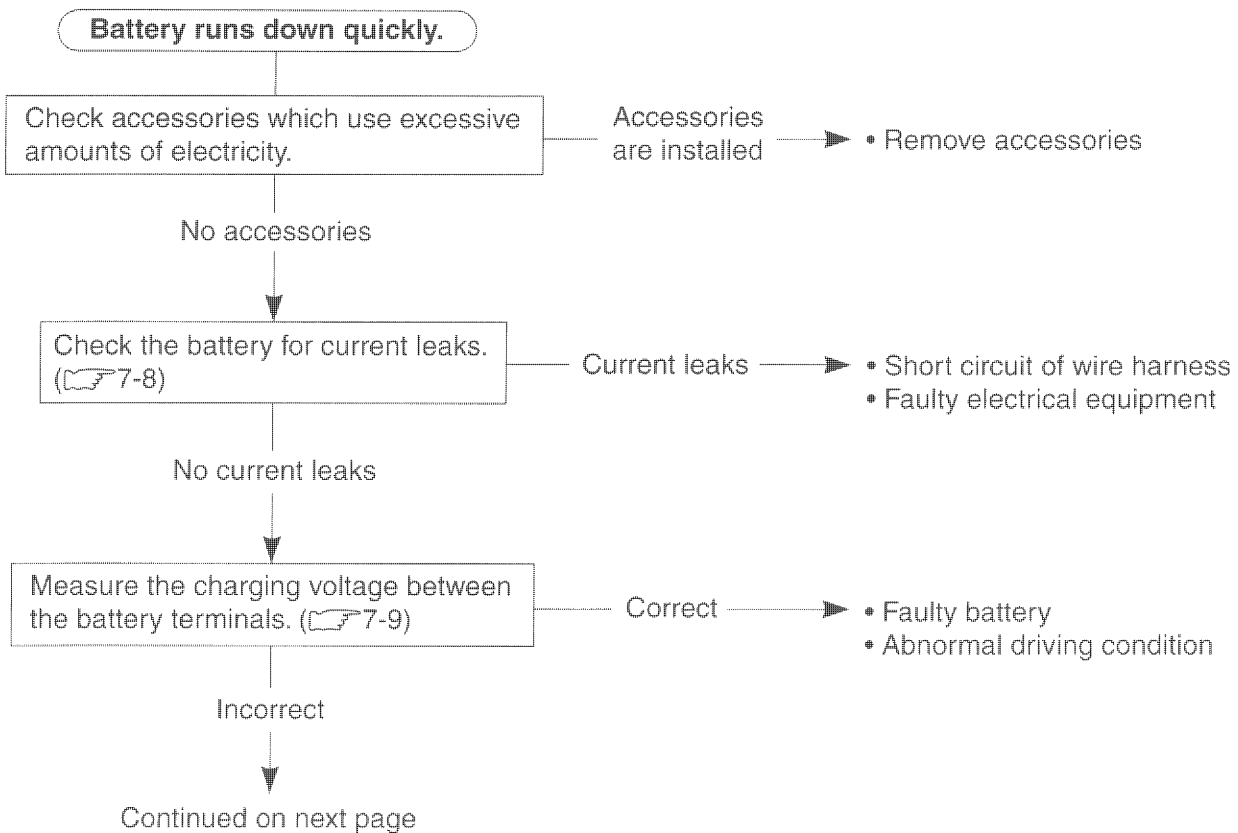




# CHARGING SYSTEM



## TROUBLESHOOTING

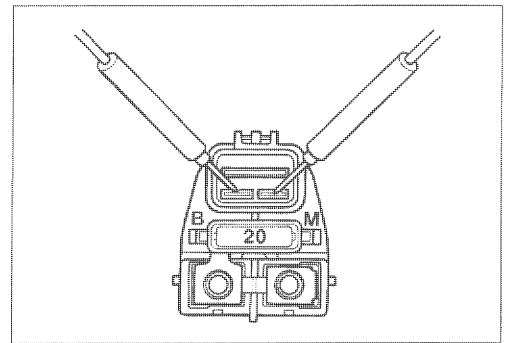


Measure the relay coil resistance between the terminals using the multi circuit tester. If the resistance is not within the specified value, replace the starter relay with a new one.

**TOOL** 09900-25008: Multi circuit tester set

**TESTER** Tester knob indication: Resistance ( $\Omega$ )

**DATA** Starter relay resistance  
Standard: 3 – 6  $\Omega$

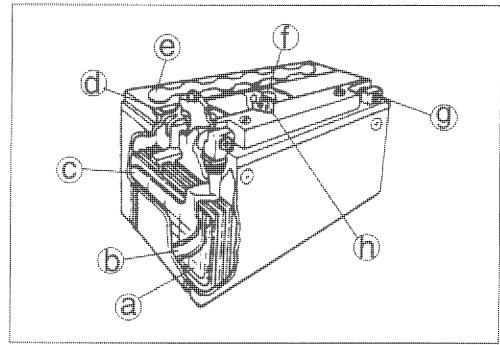


## BATTERY

### SPECIFICATIONS

Type designation	YTX9-BS
Capacity	12V, 28.8 kC (8 Ah)/10HR

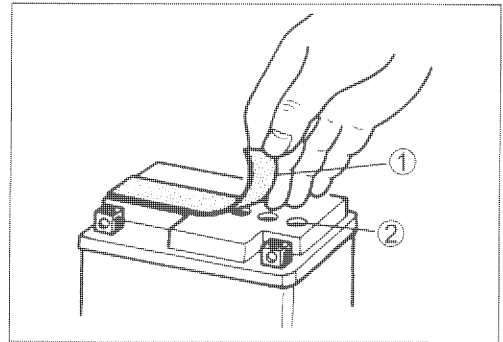
- |                                |               |
|--------------------------------|---------------|
| Ⓐ Anode plates                 | Ⓔ Stopper     |
| Ⓑ Separator (fiberglass plate) | Ⓣ Filter      |
| Ⓒ Cathode plates               | Ⓤ Terminal    |
| Ⓓ Upper cover breather         | Ⓜ Safty valve |



### INITIAL CHARGING

#### FILLING ELECTROLYTE

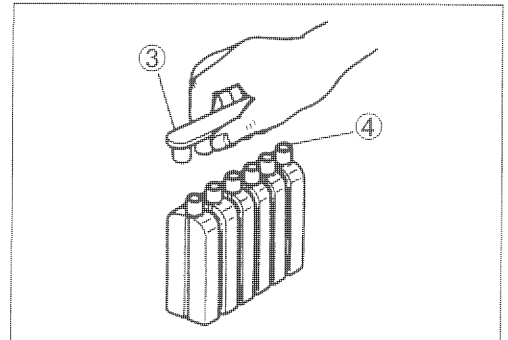
- Remove the aluminum tape ① which seals the battery filler holes ②.



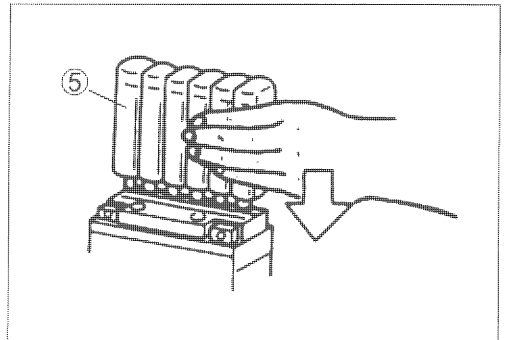
- Remove the caps ③ from the electrolyte container.

#### NOTE:

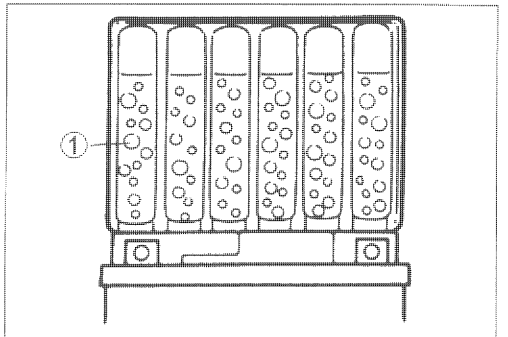
- \* Do not remove or pierce the sealed areas ④ of the electrolyte container.*
- \* After completely filling the battery with electrolyte, use the caps ③ from the electrolyte container to seal the battery filler holes.*



- Insert the nozzles of the electrolyte container ⑤ into the electrolyte filler holes of the battery. Hold the electrolyte container firmly so that it does not fall. Do not allow any of the electrolyte to spill.



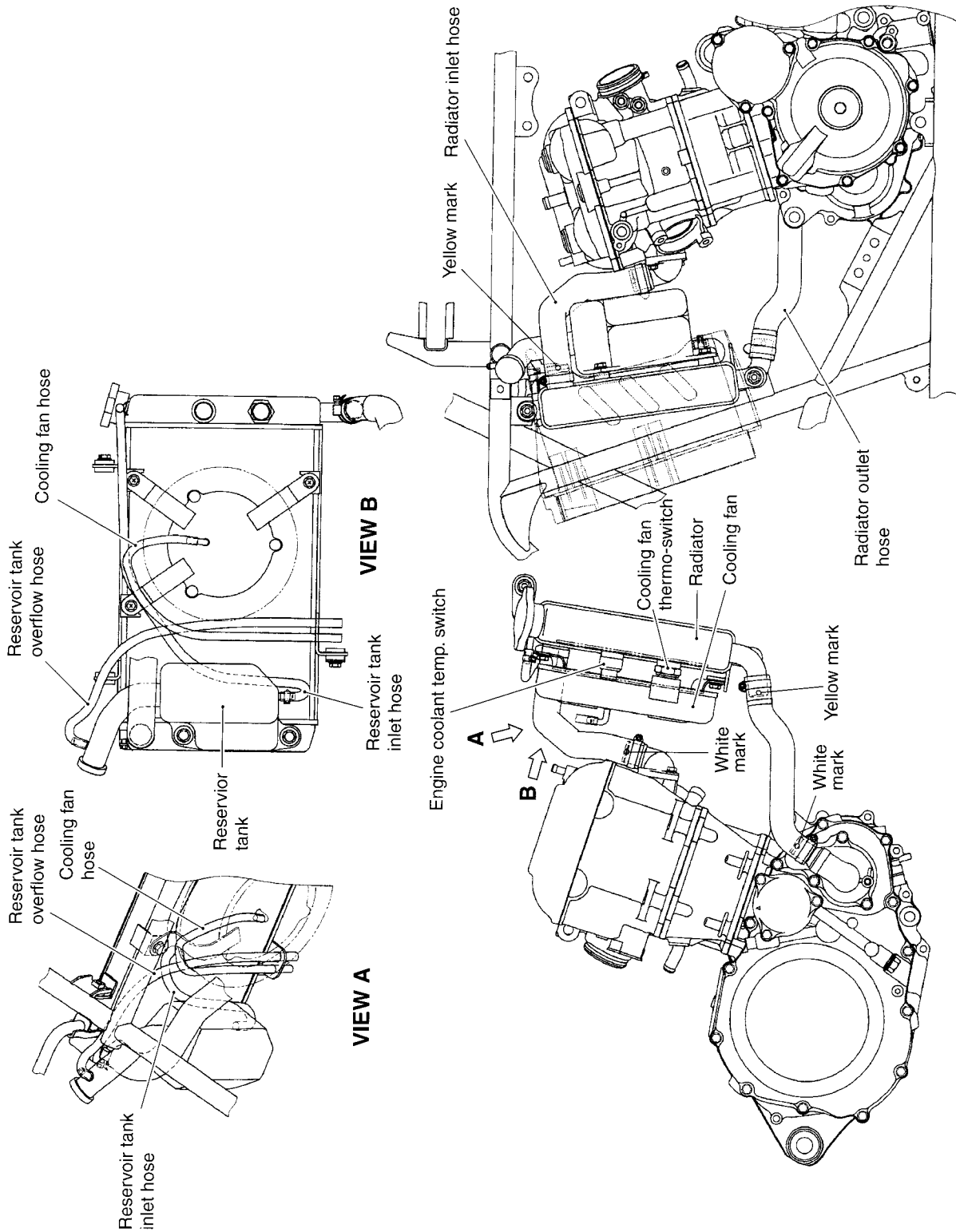
- Make sure the air bubbles ① rise to the top of each electrolyte container and leave the electrolyte container in this position for more than 20 minutes.



## ELECTRICAL

Complaint	Symptom and possible causes	Remedy
<b>No sparking or poor sparking.</b>	<ol style="list-style-type: none"> <li>1. Defective ignition coil.</li> <li>2. Defective spark plug.</li> <li>3. Defective generator.</li> <li>4. Defective CDI unit.</li> <li>5. Defective pickup coil.</li> </ol>	Replace. Replace. Replace. Replace. Replace.
<b>Spark plug is wet or quickly becomes fouled with carbon.</b>	<ol style="list-style-type: none"> <li>1. Excessively rich air/fuel mixture.</li> <li>2. Excessively high idling speed.</li> <li>3. Incorrect gasoline.</li> <li>4. Dirty air cleaner element.</li> <li>5. Incorrect spark plug (cold type).</li> </ol>	Adjust carburetor. Adjust carburetor. Change. Clean or replace. Change to standard spark plug.
<b>Spark plug quickly becomes fouled with oil or carbon.</b>	<ol style="list-style-type: none"> <li>1. Worn piston ring.</li> <li>2. Worn piston.</li> <li>3. Worn cylinder.</li> <li>4. Excessive valve-stem-to-valve-guide clearance.</li> <li>5. Worn valve stem oil seal.</li> </ol>	Replace. Replace. Replace. Replace. Replace.
<b>Spark plug electrodes overheat or burn.</b>	<ol style="list-style-type: none"> <li>1. Incorrect spark plug.</li> <li>2. Overheated engine.</li> <li>3. Loose spark plug.</li> <li>4. Excessively lean air/fuel mixture.</li> </ol>	Change to cold type spark plug. Turn-up. Tighten. Adjust carburetor.
<b>Generator does not charge.</b>	<ol style="list-style-type: none"> <li>1. Open or short in lead wires, or loose lead connections.</li> <li>2. Shorted, grounded or open generator coil.</li> <li>3. Shorted or punctured regulator/rectifier.</li> </ol>	Repair, replace or connect properly. Replace. Replace.
<b>Generator charges but charging rate is below specification.</b>	<ol style="list-style-type: none"> <li>1. Lead wires tend to get shorted, open-circuited, or loosely connected at terminal.</li> <li>2. Grounded or open-circuited stator coils or generator.</li> <li>3. Defective regulator/rectifier.</li> </ol>	Repair or tighten. Replace. Replace.
<b>Generator over-charges.</b>	<ol style="list-style-type: none"> <li>1. Internal short-circuit in the battery.</li> <li>2. Damaged or defective regulator/rectifier.</li> </ol>	Replace battery. Replace.
<b>Unstable charging.</b>	<ol style="list-style-type: none"> <li>1. Lead wire insulation frayed due to vibration, resulting in intermittent shorting.</li> <li>2. Internally shorted generator.</li> <li>3. Defective regulator/rectifier.</li> </ol>	Repair or replace. Replace. Replace.
<b>Starter button does not work.</b>	<ol style="list-style-type: none"> <li>1. Run down battery.</li> <li>2. Defective switch contact.</li> <li>3. Brushes do not seat properly on the commutator in the starter motor.</li> <li>4. Defective starter relay.</li> <li>5. Defective neutral relay.</li> <li>6. Defective engine stop switch.</li> <li>7. Defective neutral switch.</li> <li>8. Defective clutch lever position switch.</li> <li>9. Wiring connections loose or disconnected.</li> </ol>	Recharge or replace. Replace. Repair or replace. Replace. Replace. Replace. Replace. Replace. Connect, tighten or repair.

# COOLING SYSTEM HOSE ROUTING



CLICK HERE TO **DOWNLOAD** THE COMPLETE MANUAL

- Thank you very much for reading the preview of the manual.
- You can download the complete manual from: [www.heydownloads.com](http://www.heydownloads.com) by clicking the link below



- Please note: If there is no response to CLICKING the link, please download this PDF first and then click on it.

CLICK HERE TO **DOWNLOAD** THE COMPLETE MANUAL