


SERVICE MANUAL

Relex 28-7

SER. NO. HY2870001~

 **HYUNDAI**
HEAVY INDUSTRIES CO.,LTD.

CLICK HERE TO **DOWNLOAD** THE COMPLETE MANUAL

- Thank you very much for reading the preview of the manual.
- You can download the complete manual from: www.heydownloads.com by clicking the link below



- Please note: If there is no response to CLICKING the link, please download this PDF first and then click on it.

CLICK HERE TO **DOWNLOAD** THE COMPLETE MANUAL

Description			Unit	Robex28-7	
Machine weight	Canopy	Rubber shoe	Kg	2750	
		Steel shoe		2760	
	Cabin	Rubber shoe		2660	
		Steel shoe		2670	
Standard bucket	Capacity		m ³	0.07	
	Width		mm	450	
Engine	Maker, model			MITSUBISHI S3L2	
	Rated power		ps(kW)/min ⁻¹	24.1(17.7)/2100	
	Displacement		cc	1318	
Working range	Arm length		mm	1165(std.)	1465(long)
	Max.digging depth			2610	2900
	Max.vertical digging depth			1870	2140
	Max.digging height			4380	4575
	Max.dumping height			3020	3220
	Max.digging reach			4590	4830
	Min.swing radius	Front		1890	1950
		Swing		1530	1580
	Rear end radius			1350	
Boom swing angle		deg	Left80/Right50		
Dimension	Overall length		mm	4420	
	Overall width			1470	
	Overall height			2385	
	Dozer(width × height)			1470×300	
Performance	Travel speed		km/hr	2.8/4.0	
	Swing speed		min ⁻¹	10.3	
	Gradeability		deg(%)	30(58)	
	Max.digging force	Bucket	kN(kgf)	25.6(2610)	
		Arm		15.6(1595)	
	Max. drawbar pull			24.1(2460)	
Under-carriage	Ground pressure	Canopy&rubber shoe	kpa(kgf/cm ²)	30.4(0.31)	
		Cabin&rubber shoe		29.5(0.30)	
	Tumbler distance × track gauge		mm	1360×1150	
	Track shoe width			300	
	Type of travelling motor			Piston shoe-in type	
Crawler tension system			Grease cylinder		
Hydraulic	Type of hydraulic pump			Piston×2, Gear×1	
	Pump oil flow		ℓ /min	2×33.6+22.1	
	Auxiliary circuit oil flow			55.7	
	Relief valve setting pressure		MPa(kgf/cm ²)	20.6/17.2(210/175)	
Capacity	Hydraulic oil tank		ℓ	50.5	
	Engine oil			4.5	
	Fuel tank			42	
	Cooling water			5.5	
Noise	Noise level(LwA/LpA)		dB	94/78	

2-7-5 Maintenance every 100 service hours

	Item	Content	Remarks
2	Fuel filter	Clean the element	After cleaning, open the cock to vent air
7	Air cleaner	Clean the dust cover, clean or replace the element	Check also for a loosened band
9	Hydraulic line filter	Replace the cartridge	Only for a new machine. After this, every 500 service hours
10	Hydraulic suction filter	Clean the element	Only for a new machine. After this, every 500 service hours

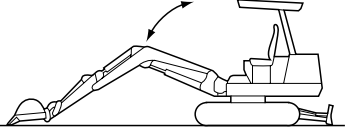
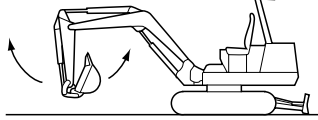
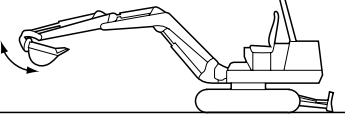
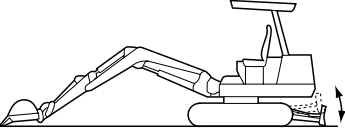
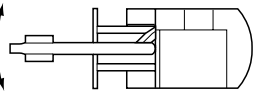
2-7-6 Maintenance every 250 service hours

	Item	Content	Remarks
1	Engine oil	Replace the engine oil	Remove the drain plug on the lower part of the tank. (After 50 service hours for a new machine)
	Engine oil filter	Replace the cartridge	After 50 service hours for a new machine
8	Hydraulic oil tank	Drain water and sediment	After air is vent, loosen the drain plug
17	Lubricating oil of slew and travelling reduction gears	Replace lubricating oil	Replace oil after the first 200 service hours. Every 1,000 service hours after this (Refer to Table of Oil/Grease Supply Points)

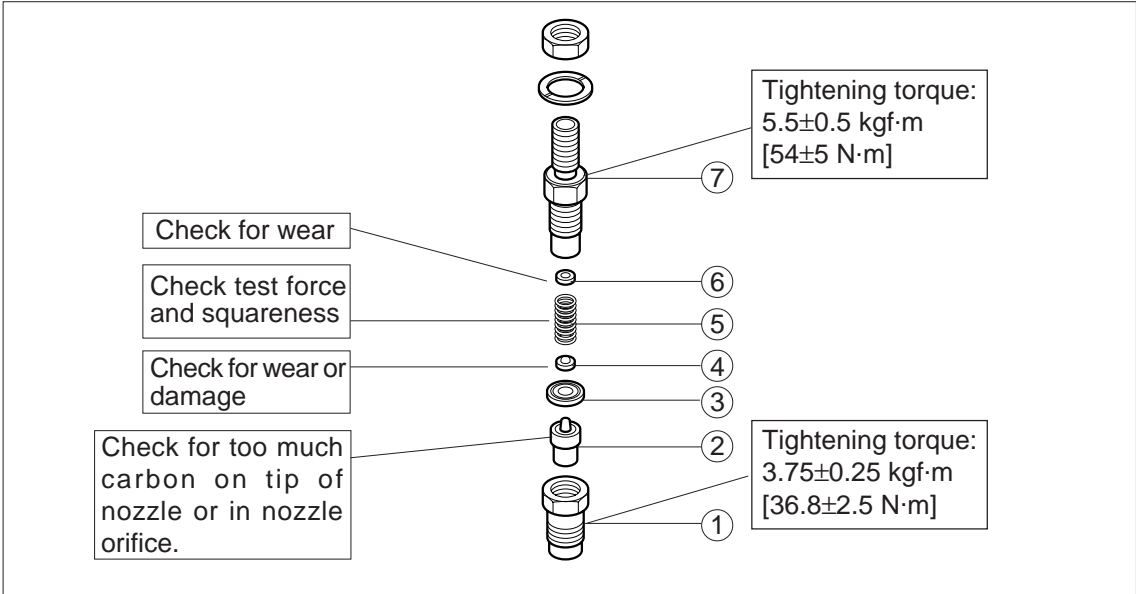
2-7-7 Maintenance every 500 service hours

	Item	Content	Remarks
2	Fuel filter	Replace the element	Clean the inside of bowl
3	Engine valve clearance	Check valve clearance	Clearance between the valve and the rocker
6	Radiator	Replace cooling water and clean the radiator	Remove the drain plug, clean the radiator and add water to the sub-tank up to the specified level.
7	Air cleaner	Replace the element	
9	Hydraulic line filter	Replace the cartridge	After 100 service hours for a new machine
10	Hydraulic suction filter	Clean the element	

3-2-2 Measuring the speed of attachment cylinder
(at full engine speed and oil temperature $50\pm 5^{\circ}\text{C}$)

Condition	Machine position	Unit	New standard value	Allowable limit
Boom Make bucket teeth touch the ground		Up	2.8 ± 0.5	3.6
Extend cylinder to the Maximum length		Down	2.7 ± 0.5	3.5
Arm Retract cylinder to the minimum length		Dig	3.1 ± 0.6	3.8
Extend cylinder to the maximum length		Dump	3.0 ± 0.5	3.9
Bucket Retract cylinder to the minimum length		Dig	3.0 ± 0.5	3.9
Extend cylinder to the maximum length		Dump	2.0 ± 0.4	2.8
Dozer Make dozer contact the ground		Up	1.2 ± 0.3	1.7
Lift dozer to the maximum height		Down	0.9 ± 0.3	1.2
Swing Retract cylinder to the minimum length		Right swing	6.7 ± 0.5	8.7
Extend cylinder to the maximum ground		Left swing	6.5 ± 0.6	8.5

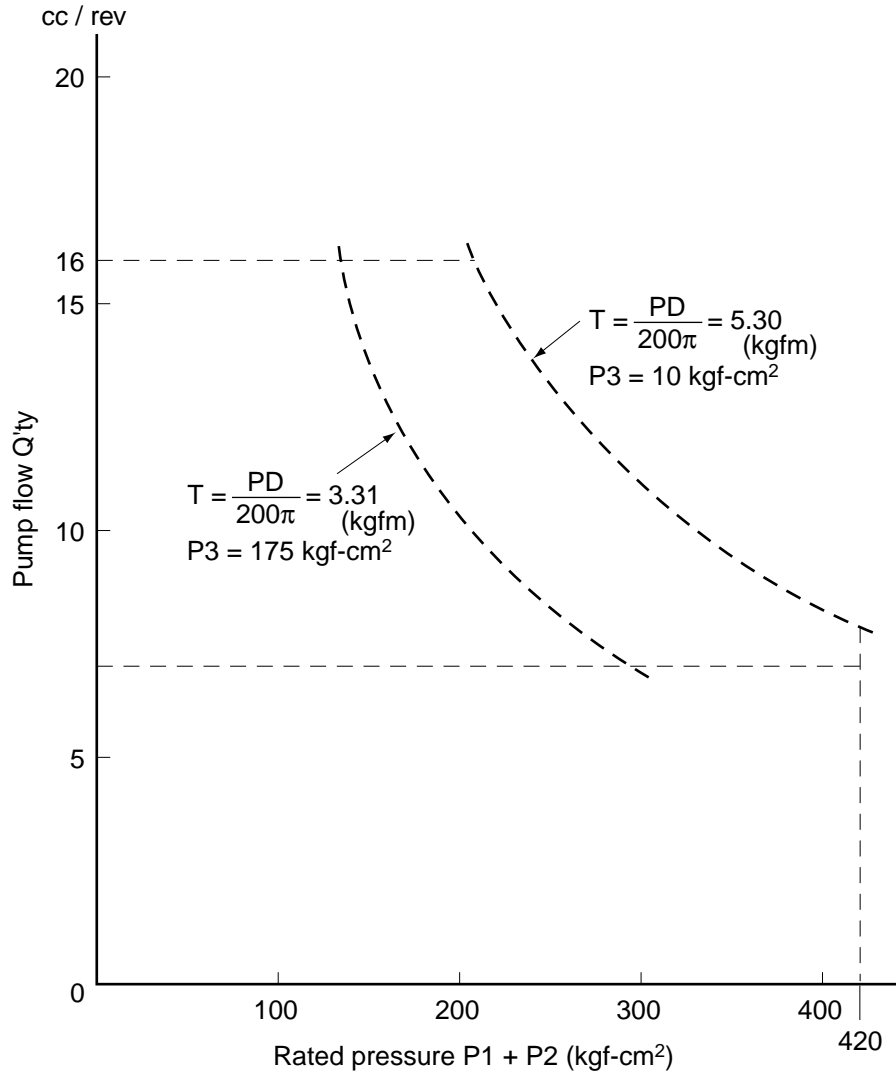
Disassembly

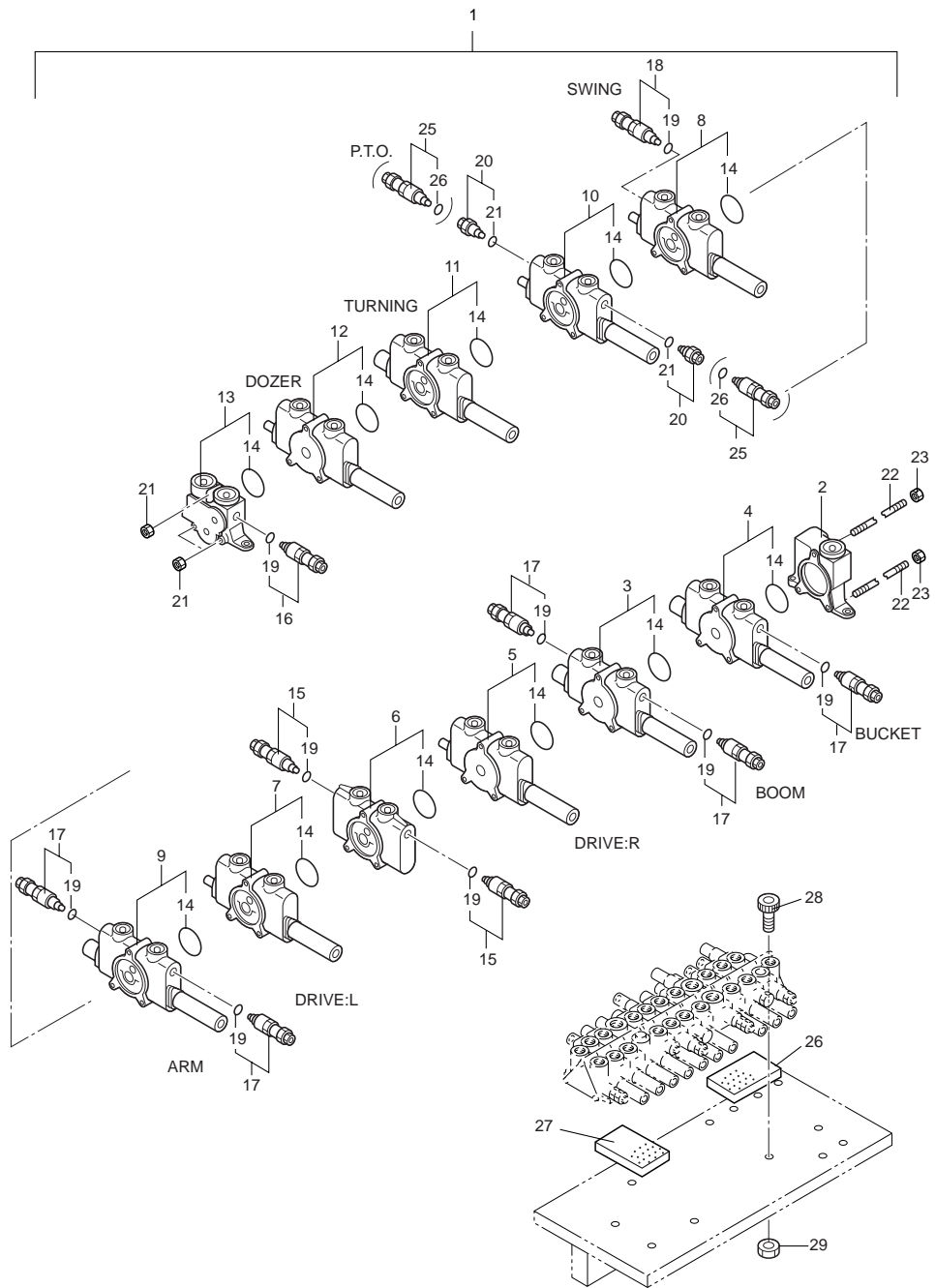


Disassembly sequence and inspection points

- ① Retaining nut
- ② Nozzle tip asse
- ③ Piece
- ④ Pin
- ⑤ Spring
- ⑥ Washer
- ⑦ Body

5-4-5 H26C Pump Performance P-Q Characteristics





1. CONTROL VALVE ASS'Y
2. OUTLET SECTION ASS'Y
3. BLOCK ASS'Y
4. BLOCK ASS'Y
5. BLOCK ASS'Y
6. SPACER SECTION ASS'Y
7. BLOCK ASS'Y
8. BLOCK ASS'Y
9. BLOCK ASS'Y
10. BLOCK ASS'Y
11. BLOCK ASS'Y
12. BLOCK ASS'Y
13. INLET SECTION ASS'Y
14. O-RING
15. RELIEF VALVE ASS'Y

16. RELIEF VALVE ASS'Y
17. RELIEF VALVE ASS'Y
18. ANTI-VOID VALVE ASS'Y
19. O-RING
20. SHUT OFF VALVE ASS'Y
21. NUT
22. O-RING
23. NUT
24. RELIEF VALVE ASS'Y
25. O-RING
26. MAT(A)
27. MAT(B)
28. BOLT
29. NUT

CLICK HERE TO **DOWNLOAD** THE COMPLETE MANUAL

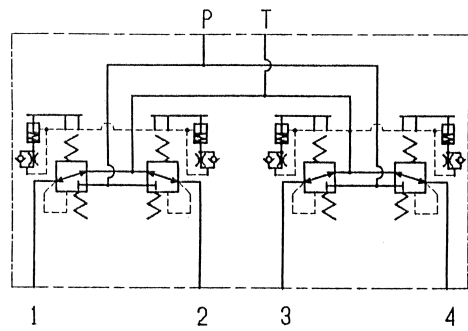
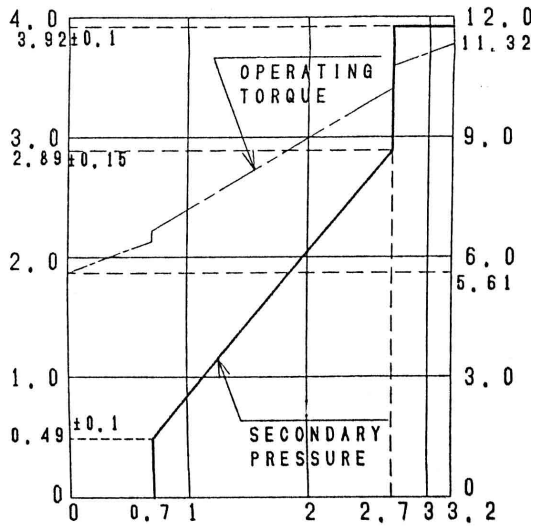
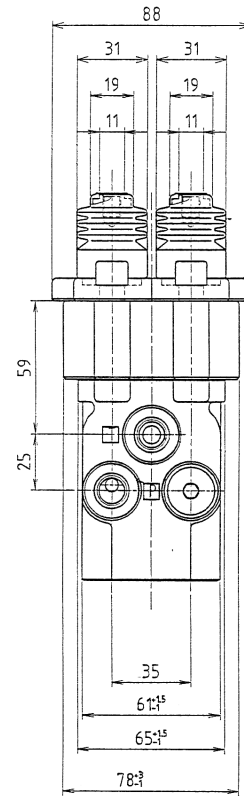
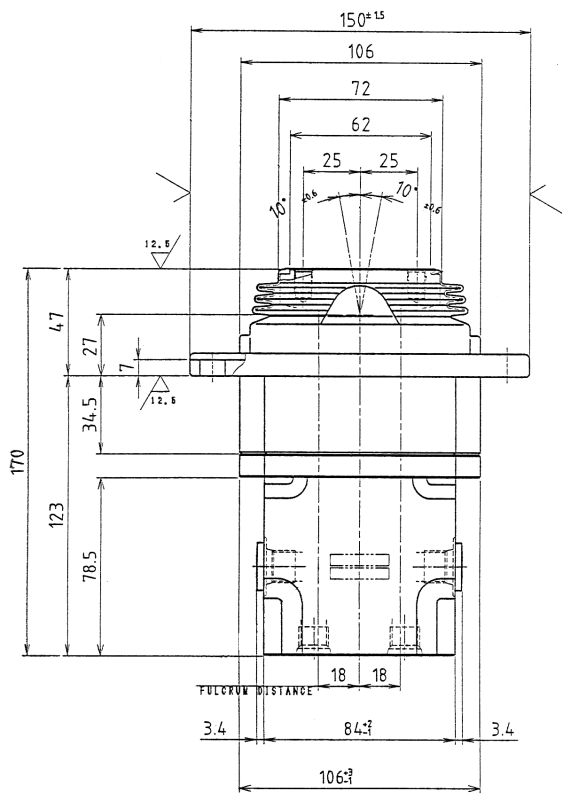
- Thank you very much for reading the preview of the manual.
- You can download the complete manual from: www.heydownloads.com by clicking the link below



- Please note: If there is no response to CLICKING the link, please download this PDF first and then click on it.

CLICK HERE TO **DOWNLOAD** THE COMPLETE MANUAL

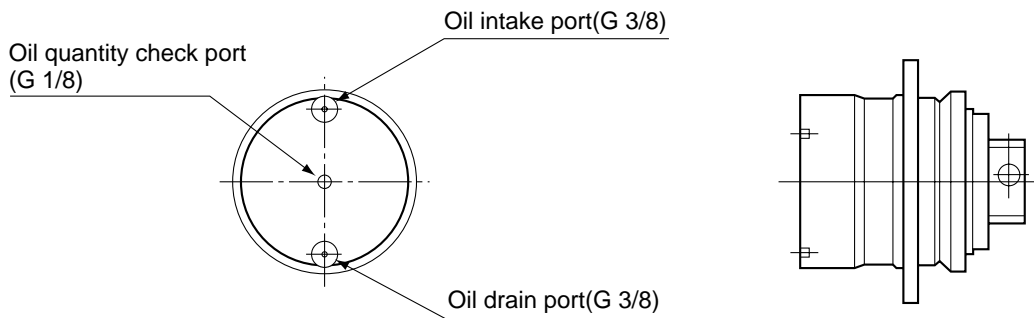
9-1 Specification



13-3 Handling the travel motor

Add lubricating oil according to the following procedure.

1. The cover has three plugs. Turn the motor so the plugs are at right angle to the floor. Use them as the oil intake port, oil quantity check and oil drain ports, starting from the top in that order.



2. First, remove the plugs from the oil intake and oil quantity check port with an Allen wrench.
3. Add lubricating oil through the oil intake until the oil comes out of the intake port.
4. Plug the oil intake and oil quantity check port, then wind seal tape around the plug before tightening.

Amount of lubricating oil	600cc
---------------------------	-------

Schedule for replacing lubricating oil:

- First: After the first 200 service hours or 2 months
- Second and later times : Every 1,000 service hours or 1 year

Standard maintenance

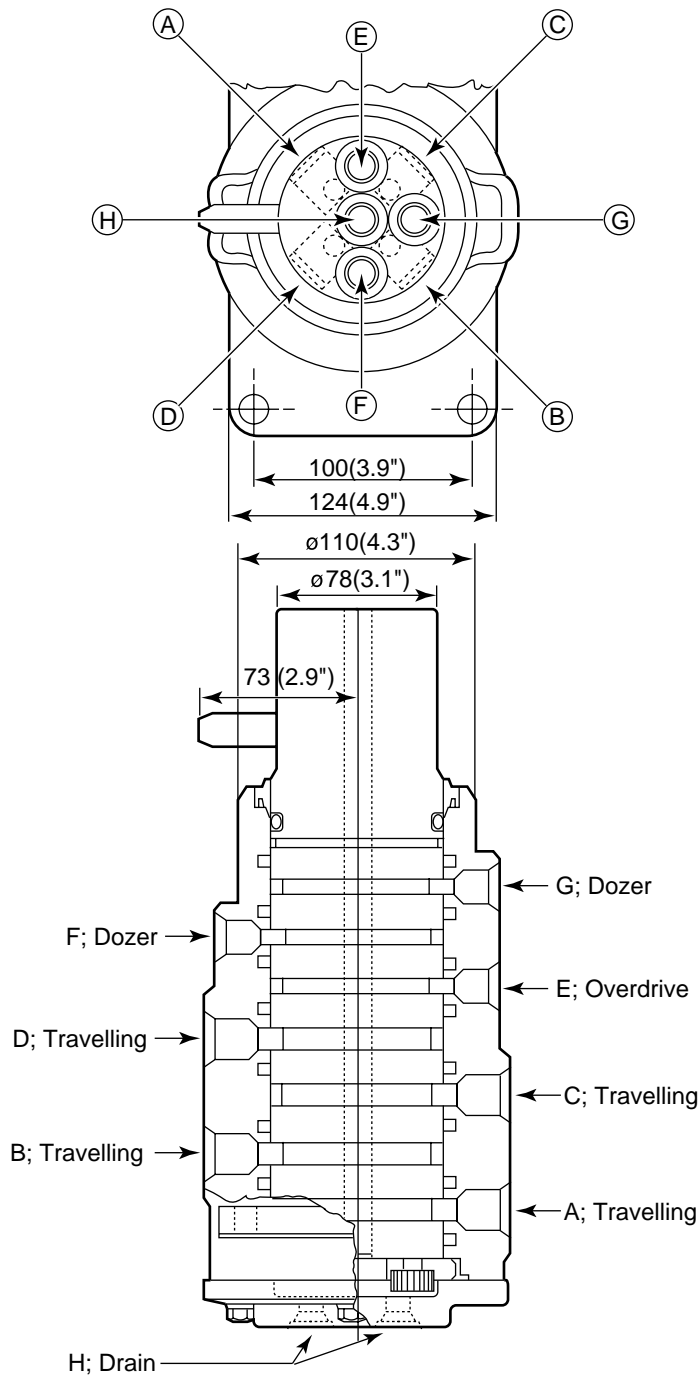
Tightening torque

Sprocket tightening torque	110 N·m
Motor tightening torque	110 N·m

15-1 Specification and Structure

Working pressure	H	0.5 MPa
	E	0.98 MPa
	A~D, F, G	20.5 MPa
Port size	E~H	PF 1/4
	A~D	PF 3/8
Working speed		10 min ⁻¹

*A to H and D rain denote the position of the port.



16-3-5 Handling the rubber crawler

1. Do not run over or turn on a sharp edge

If you run over or turn on a projecting sharp edge or a stepped grade, the machine will partially load on the rubber crawler and split it or cut the threads of the rubber crawler and the inner steel cord.

2. Prevent foreign matter from entering the rubber crawler

Foreign matter will strain the crawler and cut it.

3. No sharp turns

Do not turn sharply on a road with a high-friction factor (such as a concrete road).

4. Keep oil products away from the rubber crawler

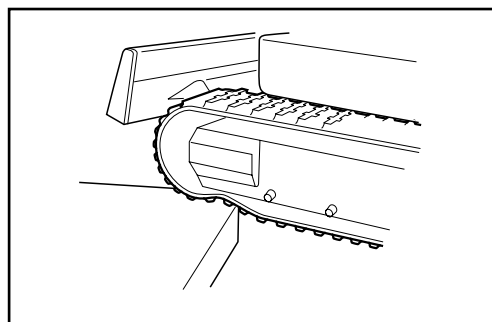
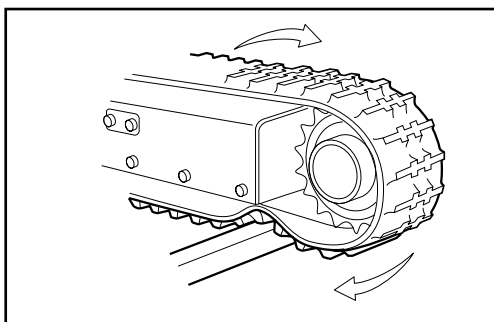
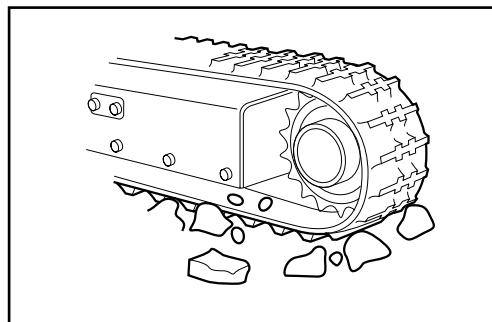
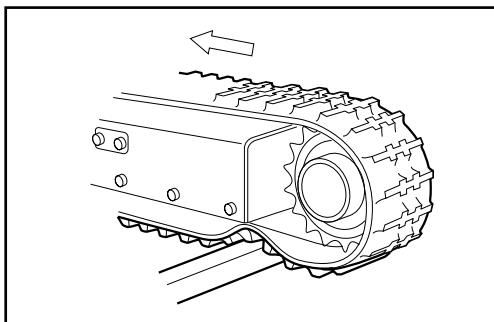
If you spill fuel or hydraulic fluid on the rubber crawler, clean it promptly.

5. Protect from salt

Do not operate on beach (Core metal will rust due to salt corrosion).

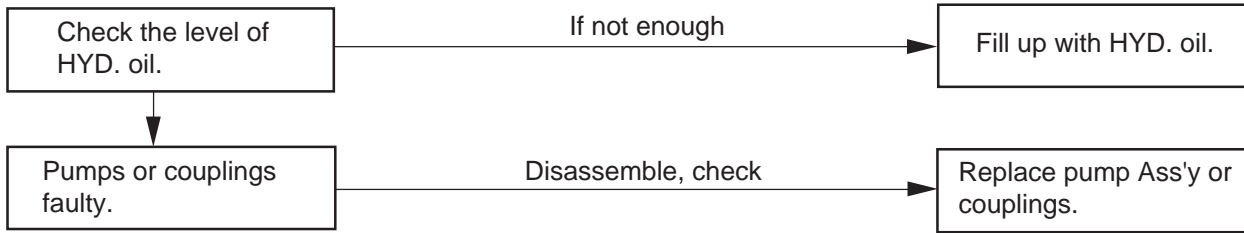
6. Store indoors

If the machine is not used for a long time, keep it indoors to prevent exposure to direct sunlight and rain.

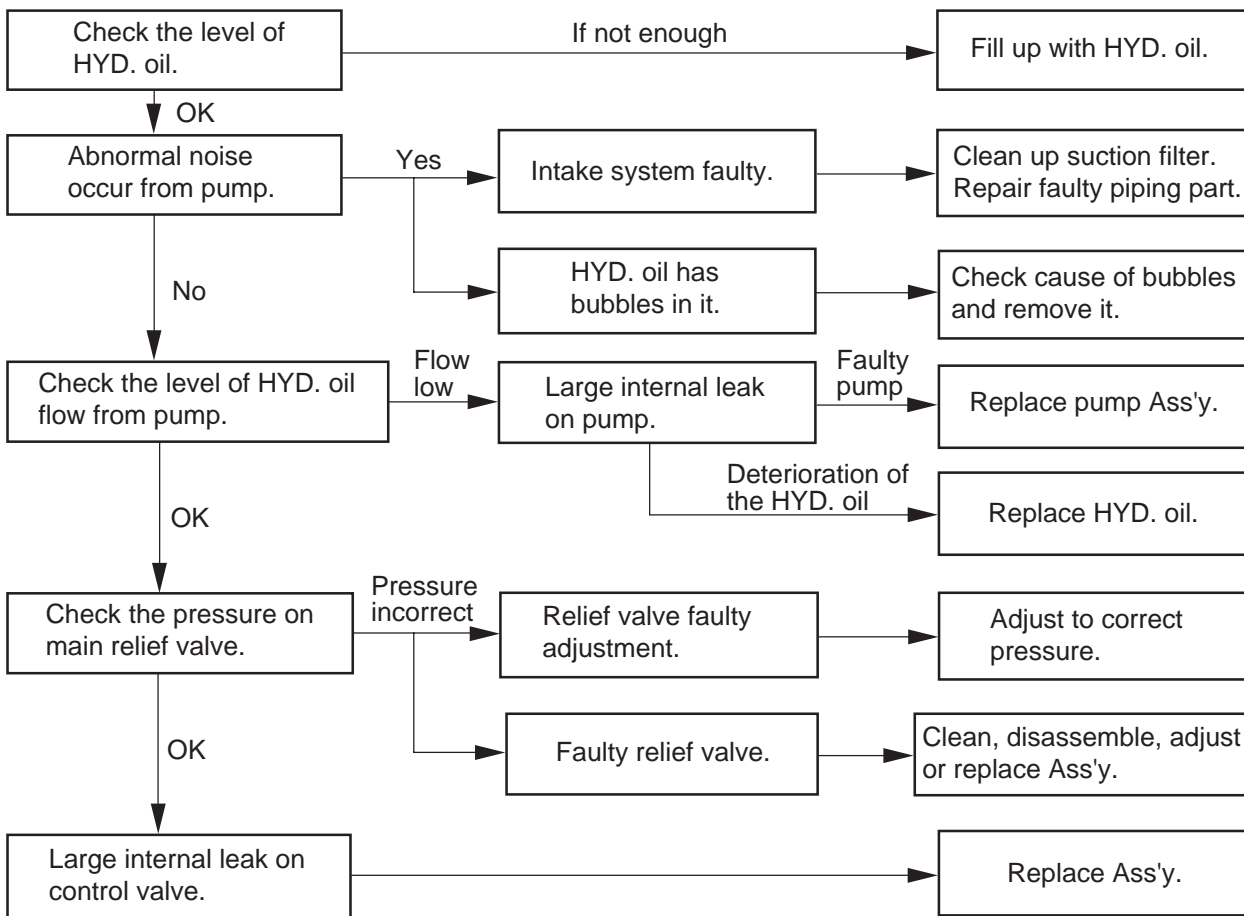


23-1 Troubleshooting

23-1-1 All functions not operational



23-1-2 Operation power is weak



CLICK HERE TO **DOWNLOAD** THE COMPLETE MANUAL

- Thank you very much for reading the preview of the manual.
- You can download the complete manual from: www.heydownloads.com by clicking the link below



- Please note: If there is no response to CLICKING the link, please download this PDF first and then click on it.

CLICK HERE TO **DOWNLOAD** THE COMPLETE MANUAL