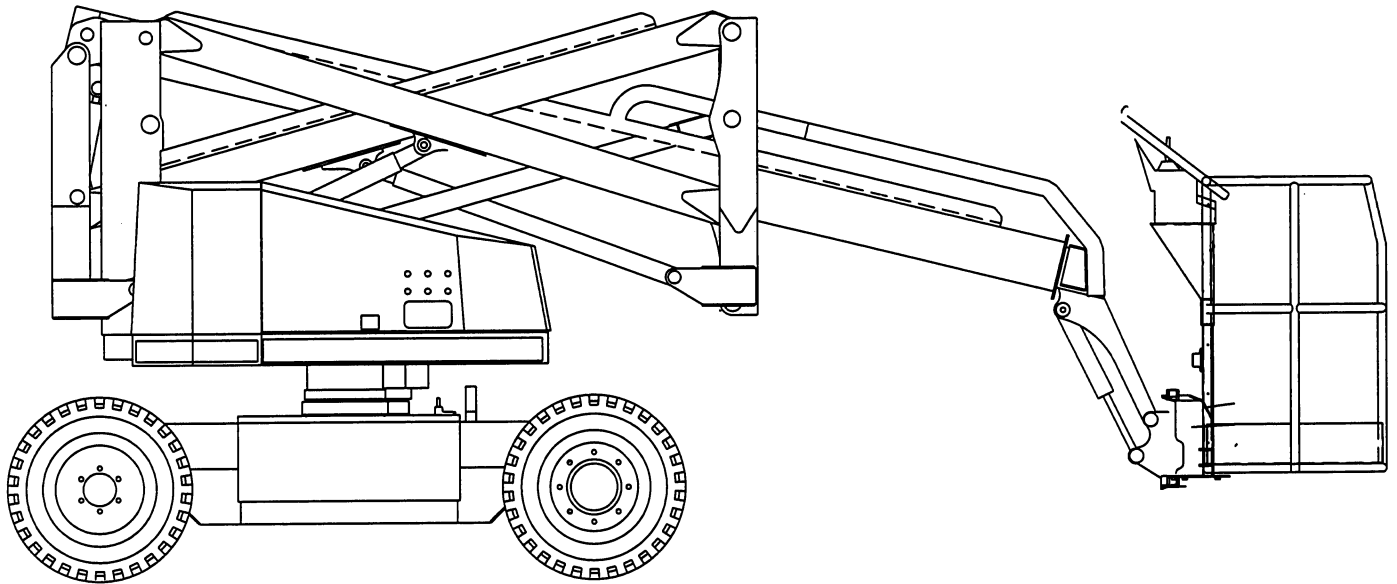




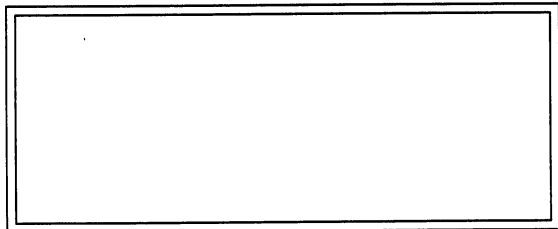
TECHNICAL MANUAL

SELF-PROPELLED KNUCKLE BOOM LIFT

MODEL TA50RT (BI-FUEL)



FOR PARTS OR SERVICE
CONTACT:



OPERATION, SERVICE and PARTS MANUAL

Terex Aerials
10600 W. Brown Deer Road
Milwaukee, WI 53224
U.S.A.

Telephone: (414) 362-9300
Facsimile: (414) 355-0832

Terex Aerials
106 12th Street S. E.
Waverly, IA 50677
U.S.A.

Telephone: (319) 352-3920
Facsimile: (319) 352-5727

Terex Aerials
Courtstown Industrial Park
Little Island, Co.
Cork, Ireland

Telephone: (353) 21-353011
Facsimile: (353) 21-353368

Issued: April '98
P/N 17326

CLICK HERE TO **DOWNLOAD** THE COMPLETE MANUAL

- Thank you very much for reading the preview of the manual.
- You can download the complete manual from: www.heydownloads.com by clicking the link below

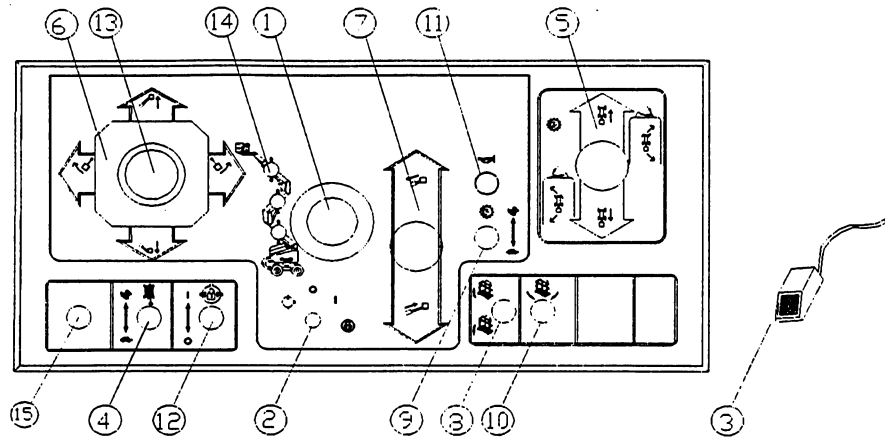


- Please note: If there is no response to CLICKING the link, please download this PDF first and then click on it.

CLICK HERE TO **DOWNLOAD** THE COMPLETE MANUAL

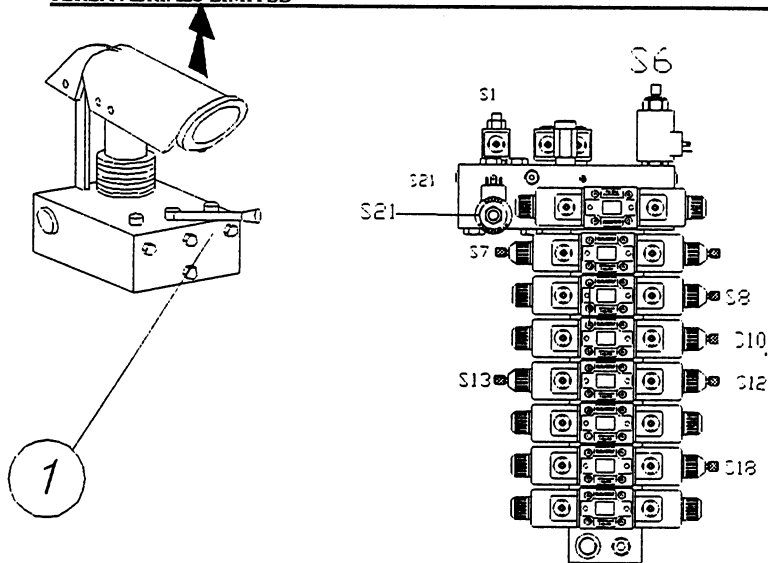
1.2.6. ENGINE DETAILS

Engine Type 1.....Ford VSG 413, 4 stroke, water cooled
Displacement1,3L
Number of Cylinders2



- | | |
|------------------------------|----------------------------------|
| 1) Emergency Stop Switch | 8) Cage Levelling Switch |
| 2) Engine on/off switch | 9) Engine Speed Switch |
| 3) Footswitch | 10) Cage Rotation Switch |
| 4) Drive Speed Select Switch | 11) Horn Button |
| 5) Drive/Steer Joystick | 12) Differential Lock Switch |
| 6) Boom/Rotate Joystick | 13) Boom Selector Button |
| 7) Teleboom Joystick | 14) Boom Selection Indicator LED |
| | 15) Fuel select switch. |

Figure 3.1 - Cage Controls

**KEY**

S21	Dump Valve
S1	Brake Override
S6	Hydraulic ByPass
S12	Lift 1 Down
S10	Lift 2 Down
S8	Lift 3 Down
S7	Lift 3 Up
S14	Rotate Right
S13	Rotate Left
S18	Tele-boom In

Figure 4.1 - Emergency Handpump - Hydraulic valve block.

- **ON COMPLETION OF THE REQUIRED OPERATIONS, ENSURE ALL VALVE KNOBS ARE SCREWED OUT FULLY.**

4.2.2 EMERGENCY ROTATION

The emergency rotation of the superstructure is performed by a mechanical override or the emergency pump.

For the mechanical override procedure, use 1/2" square socket, extension and ratchet handle attached to the square extension shaft of the rotate drive gearbox.

- (a) Pressurise the hydraulic circuit and inspect the system for any signs of oil leakage, particularly at flexible hoses, connections and hydraulic components.
- (b) Examine all pivot pins on booms, cylinders and the levelling system to ensure that they are positively secured in position.

5.3.2.3 Steering

Check the steering cylinder for oil leakage and the linkage for signs of water.

5.3.2.4 Start Battery

Check the battery electrolyte levels. Replenish the electrolyte with distilled water if necessary.

5.3.2.5 Pivot Pins

Check all pivot pins for security. Grease those pivot pins as shown in the following Fig 5.2.

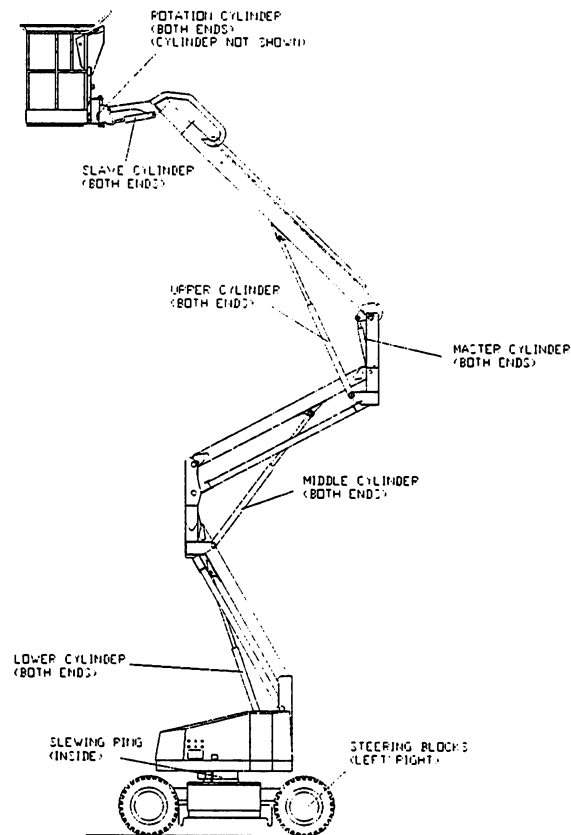


Figure 5.2 : Location of Grease Nipples

SECTION 6
ILLUSTRATED SPARE PARTS

When ordering Spare Parts, please quote the Machine Model, the Machine Serial Number and Part Number reference in this section.

PLINTH COMPONENTS LISTING

ITEM	PART NO.	DESCRIPTION	QTY
1	SS185	SUCTION FILTER BRACKET	1
2	13011-0100	PLINTH ASSEMBLY	1
3	GS541	FIRST POST	1
4	14029-0003	BALLAST (LEFT HAND)	1
	14029-0004	BALLAST (RIGHT HAND)	1
	GS419	BALLAST RETAINING ASSEMBLY	2
	10932	M12 X 60 LG. HEX. HEAD SCREW	6
	11410	M12 HEX. HEAD LOCK NUT	6
5	MS320	MOUNTING FOOT (HATZ ENGINE)	4
6	14315	SLEW GEARBOX	1
7	44006-0005	M12 X 35 LG. HEX. HEAD-12.9	4
8	44013-0075	HARDENED WASHER	4
9	10854	ROTATION MOTOR	1
10	GS406	STARTER BATTERY BOX	1

TA 50RT

LOWER CONTROL BOX

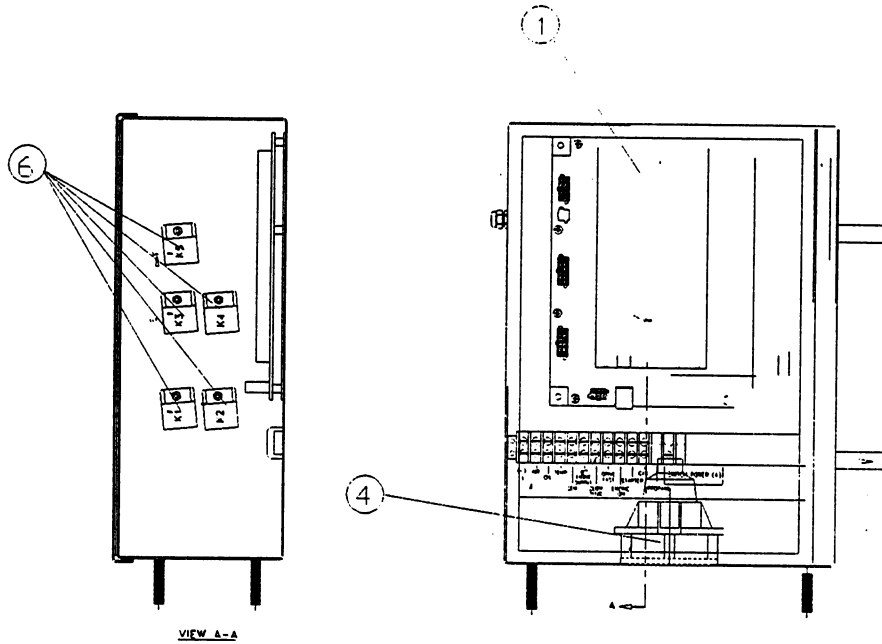


FIG 6.4 - LOWER CONTROL BOX - INTERNAL VIEW

ITEM	PART NO.	DESCRIPTION	QTY.
1	42014-0140	PCB - DMR-30	1
2	42013-0388	ALARM	1
3	42013-0389	ALARM	1
4	42013-0345	TILT SENSOR(5 degree)	1
5	42002-0134	HATZ ENGINE RELAY	1
6	42015-0133	RELAY	7
8	42013-0391	HARNES FROM BOX TO VALVE BLOCK*	1

*** NOT SHOWN IN ILLUSTRATION**

CLICK HERE TO **DOWNLOAD** THE COMPLETE MANUAL

- Thank you very much for reading the preview of the manual.
- You can download the complete manual from: www.heydownloads.com by clicking the link below



- Please note: If there is no response to CLICKING the link, please download this PDF first and then click on it.

CLICK HERE TO **DOWNLOAD** THE COMPLETE MANUAL