



YZF-R6T YZF-R6TC

SUPPLEMENTARY SERVICE MANUAL

CLICK HERE TO **DOWNLOAD** THE COMPLETE MANUAL

- Thank you very much for reading the preview of the manual.
- You can download the complete manual from: www.heydownloads.com by clicking the link below



- Please note: If there is no response to CLICKING the link, please download this PDF first and then click on it.

CLICK HERE TO **DOWNLOAD** THE COMPLETE MANUAL

CHASSIS SPECIFICATIONS/ ELECTRICAL SPECIFICATIONS

SPEC



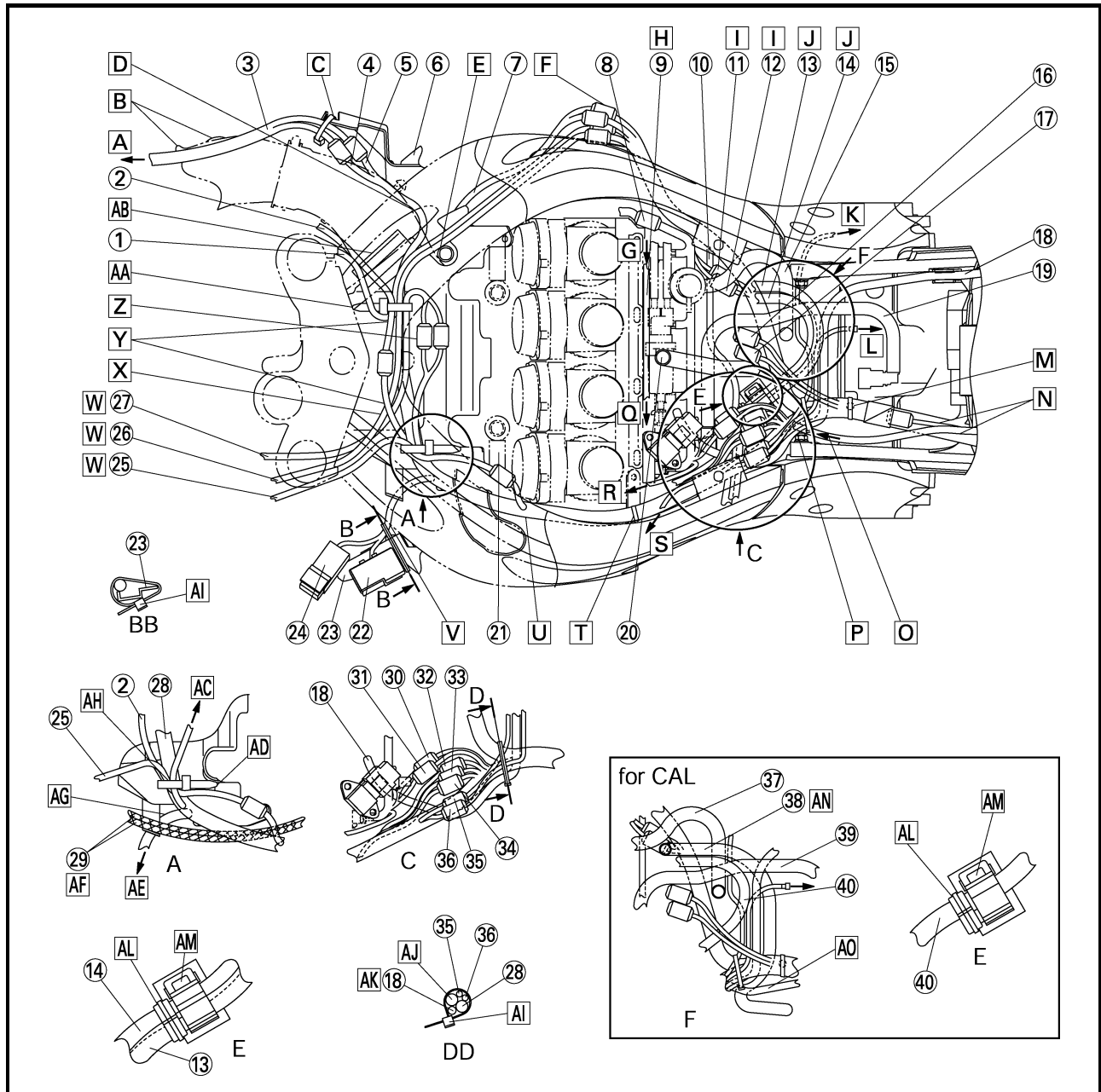
Item	Standard	Limit
Front suspension		
Spring		
Free length	248.8 mm (9.80 in)	243.8 mm (9.60 in)
Installed length	244.3 mm (9.62 in)	•••
Spring rate (K1)	8.8 N/mm (0.90 kg/mm, 50.22 lb/in)	•••
Spring stroke (K1)	0 ~ 120 mm (0 ~ 4.7244 in)	•••
Inner tube outer diameter	41 mm (1.61 in)	•••
Fork oil		
Quantity (each front fork leg)	0.475 L (0.418 Imp qt, 0.502 US qt)	•••
Level (from the top of the outer tube, with the outer tube fully compressed, and without the fork spring)	92 mm (3.62 in)	•••
Spring preload adjusting positions		
Minimum	8	•••
Standard	7	•••
Maximum	0	•••
Rebound damping adjusting positions		
Minimum*	10	•••
Standard*	6	•••
Maximum*	1	•••
Compression damping adjusting positions		
Minimum*	13	•••
Standard*	6	•••
Maximum*	1	•••
*from the fully turned-in position		
Rear suspension		
Spring		
Free length	167.5 mm (6.59 in)	•••
Installed length	157.5 mm (6.2 in)	•••
Spring rate (K1)	103 N/mm (10.5 kg/mm, 587.83 lb/in)	•••
Drive chain		
Maximum 15-link section	•••	239.3 mm (9.42 in)

ELECTRICAL SPECIFICATIONS

Item	Standard	Limit
Ignition system		
CDI unit model (manufacturer)	F8T828 (MITSUBISHI)	•••
Fuses (amperage × quantity)		
Radiator fan motor fuse	15 A × 2	•••



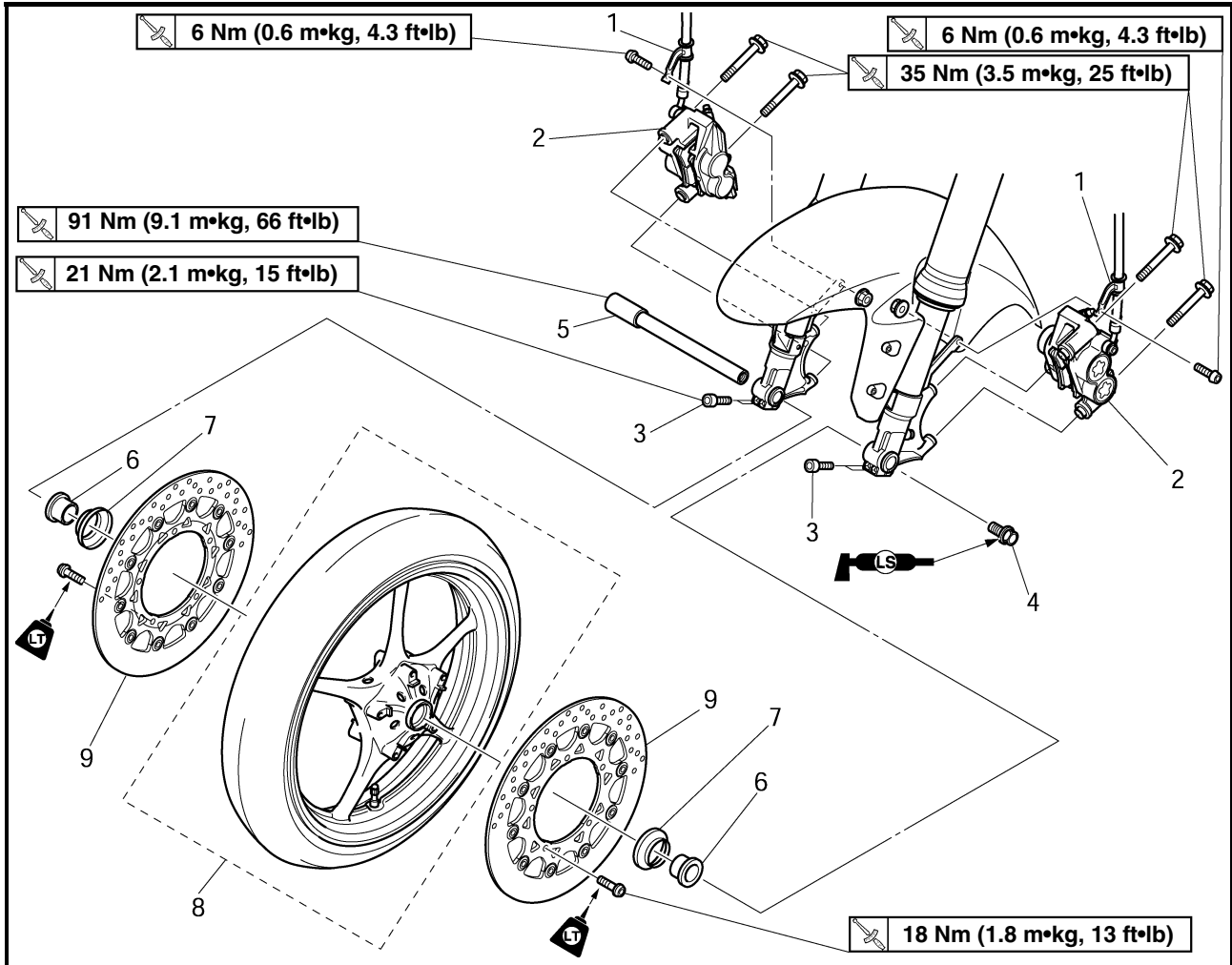
- J** Pass the fuel tank breather hose and fuel tank drain hose over the fuel hose and fuel return hose. One rotation is possible for a twist of fuel tank breather hose and fuel tank drain hose before an engine clamp.
- K** To the rear tail/brake light switch lead.
- L** To the neutral switch
- M** Insert the wire harness wrapping clamp to the frame hole.
- N** Pass the battery negative lead over the wire harness.
- O** To the engine. Upper or lower position relation against the heat protector is no object.
- P** There should be no interference between the wire harness and the tip of the rear frame attaching bolts.
- Q** To the coolant reservoir tank
- R** To the intake air temperature sensor (air filter case)
- S** To the oil level switch, sidestand switch and A.C. magneto
- T** Install the wire harness wrapping clamp to the stay of the throttle body.
- U** Pass the wire harness over the throttle air vent hose.
- V** Pass the wire harness between frame and coolant hose.
- W** Pass it through the frame hole.
- X** Route the main switch lead under the left handlebar switch lead and radiator fan motor lead (right).



EAS00514

CHASSIS

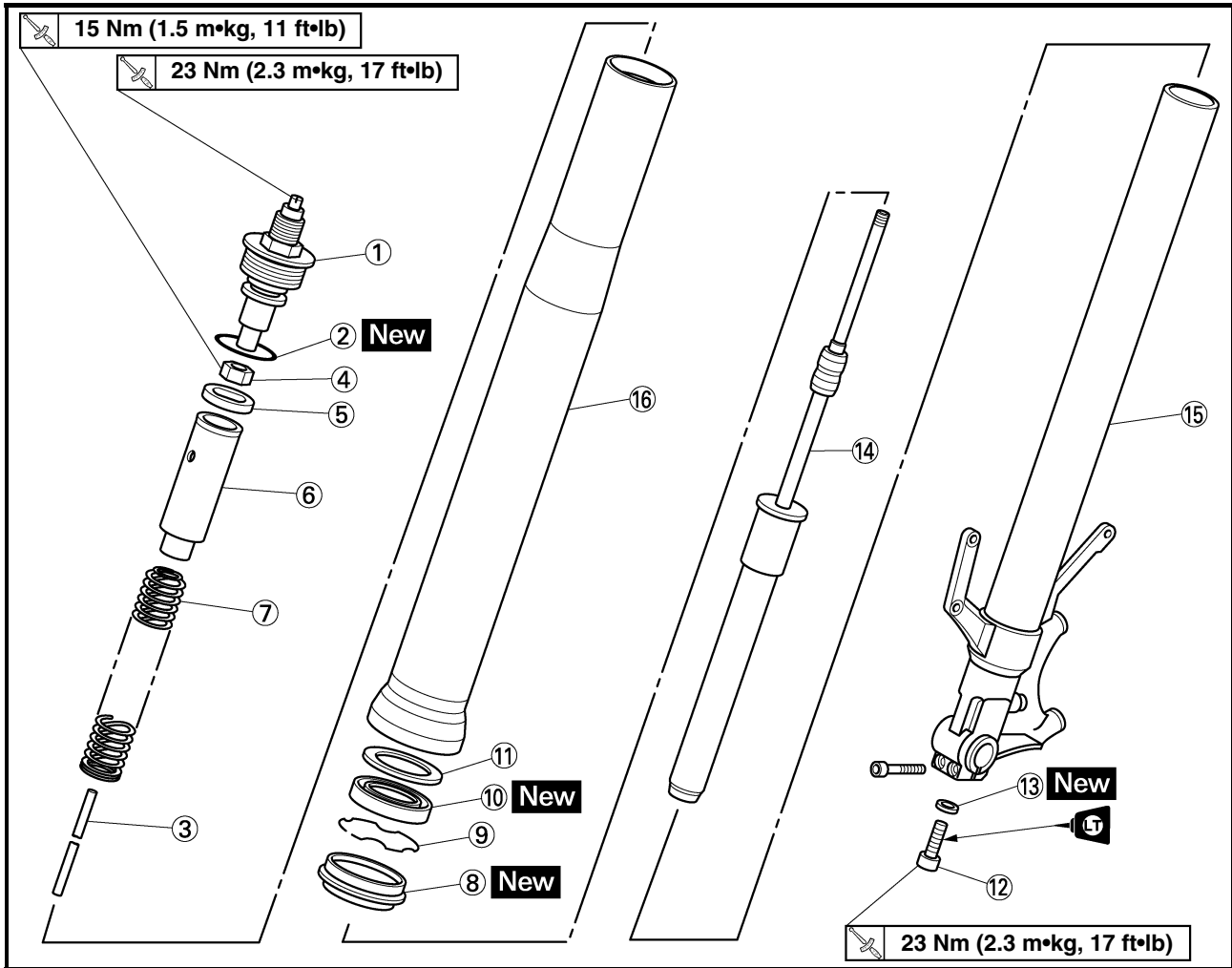
FRONT WHEEL AND BRAKE DISCS



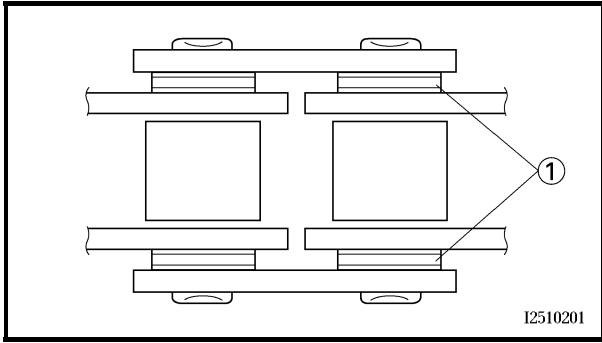
Order	Job/Part	Q'ty	Remarks
	Removing the front wheel and brake discs		Remove the parts in the order listed. NOTE: _____ Place the motorcycle on a suitable stand so that the front wheel is elevated. _____
1	Brake hose holder (left and right)	2	Loosen.
2	Front brake caliper (left and right)	2	
3	Front wheel axle pinch bolt	4	
4	Front wheel axle bolt	1	
5	Front wheel axle	1	
6	Collar (left and right)	2	
7	Oil seal cover (left and right)	2	
8	Front wheel	1	
9	Front brake disc (left and right)	2	
			For installation, reverse the removal procedure.



EAS00648

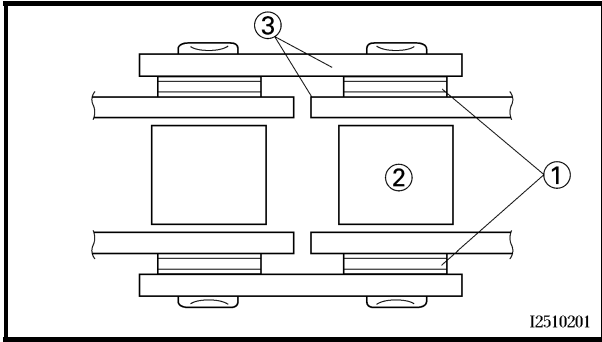


Order	Job/Part	Q'ty	Remarks
	Disassembling the front fork legs		Disassemble the parts in the order listed. NOTE: _____ The following the procedure applies to both of the front fork legs.
①	Cap bolt	1	
②	O-ring	1	
③	Damper adjusting rod	1	
④	Nut	1	
⑤	Washer	1	
⑥	Spacer	1	
⑦	Fork spring	1	
⑧	Dust seal	1	
⑨	Oil seal clip	1	
⑩	Oil seal	1	



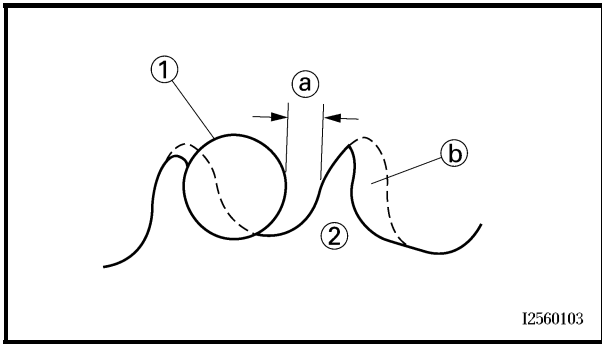
CAUTION:

This motorcycle has a drive chain with small rubber O-rings ① between the drive chain side plates. Never use high-pressure water or air, steam, gasoline, certain solvents (e.g., benzine), or a coarse brush to clean the drive chain. High-pressure methods could force dirt or water into the drive chain's internals, and solvents will deteriorate the O-rings. A coarse brush can also damage the O-rings. Therefore, use only kerosine to clean the drive chain.



4. Check:
 - O-rings ①
Damage → Replace the drive chain.
 - drive chain rollers ②
Damage/wear → Replace the drive chain.
 - drive chain side plates ③
Damage/wear → Replace the drive chain.
Cracks → Replace the drive chain and make sure that the battery breather hose is properly routed away from the drive chain and below the swingarm.
5. Lubricate:
 - drive chain

	Recommended lubricant Engine oil or chain lubricant suitable for O-ring chains
---	---



6. Check:
 - drive sprocket
 - rear wheel sprocket
More than 1/4 tooth ① wear → Replace the drive chain sprockets as a set.
Bent teeth → Replace the drive chain sprockets as a set.
- (b) Correct
 (1) Drive chain roller
 (2) Drive chain sprocket

CLICK HERE TO **DOWNLOAD** THE COMPLETE MANUAL

- Thank you very much for reading the preview of the manual.
- You can download the complete manual from: www.heydownloads.com by clicking the link below



- Please note: If there is no response to CLICKING the link, please download this PDF first and then click on it.

CLICK HERE TO **DOWNLOAD** THE COMPLETE MANUAL