

# **B285**

## **UTILEV SERVICE MANUAL**

**UT20P, UT25P, UT30P, UT35P**



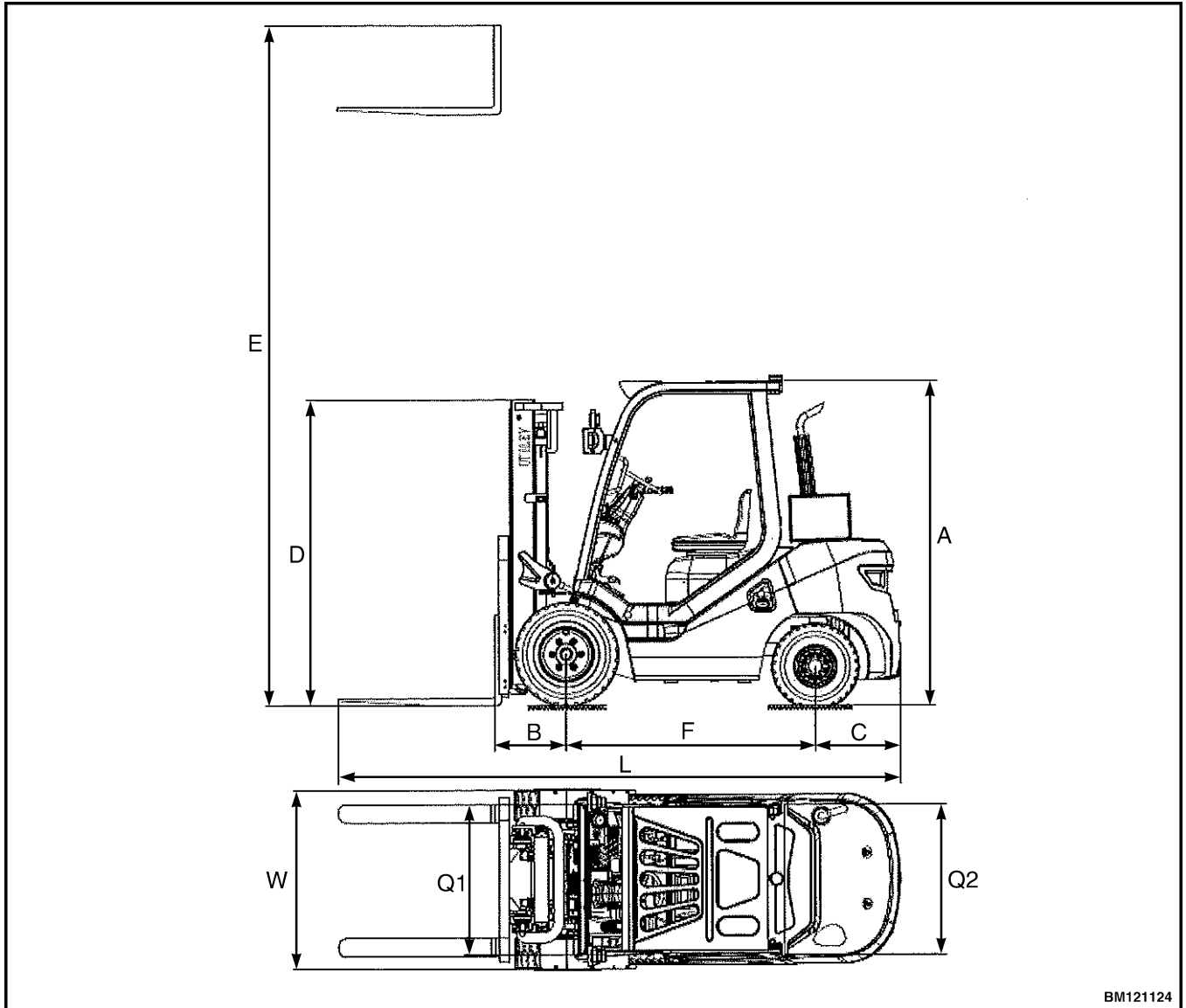
CLICK HERE TO **DOWNLOAD** THE COMPLETE MANUAL

- Thank you very much for reading the preview of the manual.
- You can download the complete manual from: [www.heydownloads.com](http://www.heydownloads.com) by clicking the link below



- Please note: If there is no response to CLICKING the link, please download this PDF first and then click on it.

CLICK HERE TO **DOWNLOAD** THE COMPLETE MANUAL



BM121124

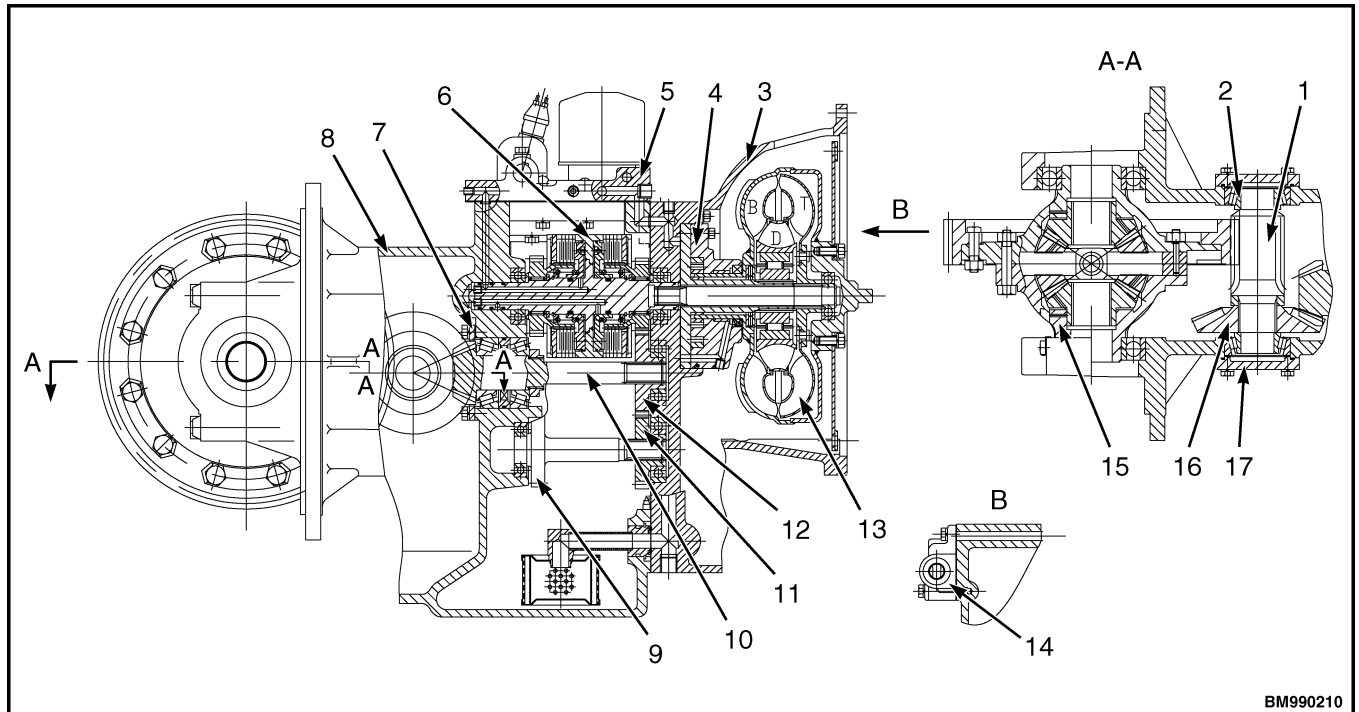
**Figure 2. Outside Drawing of Forklift Truck (Diesel engine/gasoline engine)**

**NOTE:** Truck with diesel engine is shown. Other trucks are similar. The values in the parameter tables

are for standard configuration only. Always consult the nameplate to see the values of a specific truck.

**Table 1. Technical Parameters**

Parameter	Model	
	H2.0UT	H2.5UT
Engine Model	4G64 2.4L	4G64 2.4L
Manufacturer	PSI	PSI
Power Source	GAS/LPG	GAS/LPG
Rated Capacity	2000 kg (4409.2 lb)	2500 kg (5511.6 lb)



BM990210

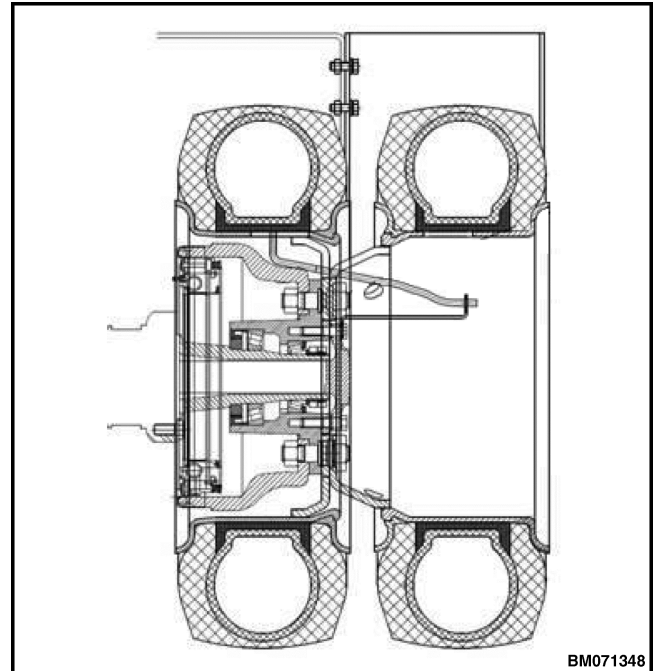
- |                                      |                                 |
|--------------------------------------|---------------------------------|
| 1. GEAR SHAFT                        | 10. OUTPUT SHAFT                |
| 2. TAPERED ROLLER BEARING            | 11. IDLER GEAR                  |
| 3. TORQUE CONVERTER HOUSING ASSEMBLY | 12. OUTPUT GEAR                 |
| 4. OIL PUMP ASSEMBLY                 | 13. HYDRAULIC TOR-CON CONVERTER |
| 5. COVER AND CONTROL VALVE ASSEMBLY  | 14. INCH VALVE ASSEMBLY         |
| 6. CLUTCH ASSEMBLY                   | 15. DIFFERENTIAL ASSEMBLY       |
| 7. BEARING PLATE                     | 16. SPIRAL BEVEL GEAR           |
| 8. HOUSING                           | 17. BEARING CAP                 |
| 9. IDLER SHAFT                       |                                 |

**Figure 7. Hydraulic Transmission Device**

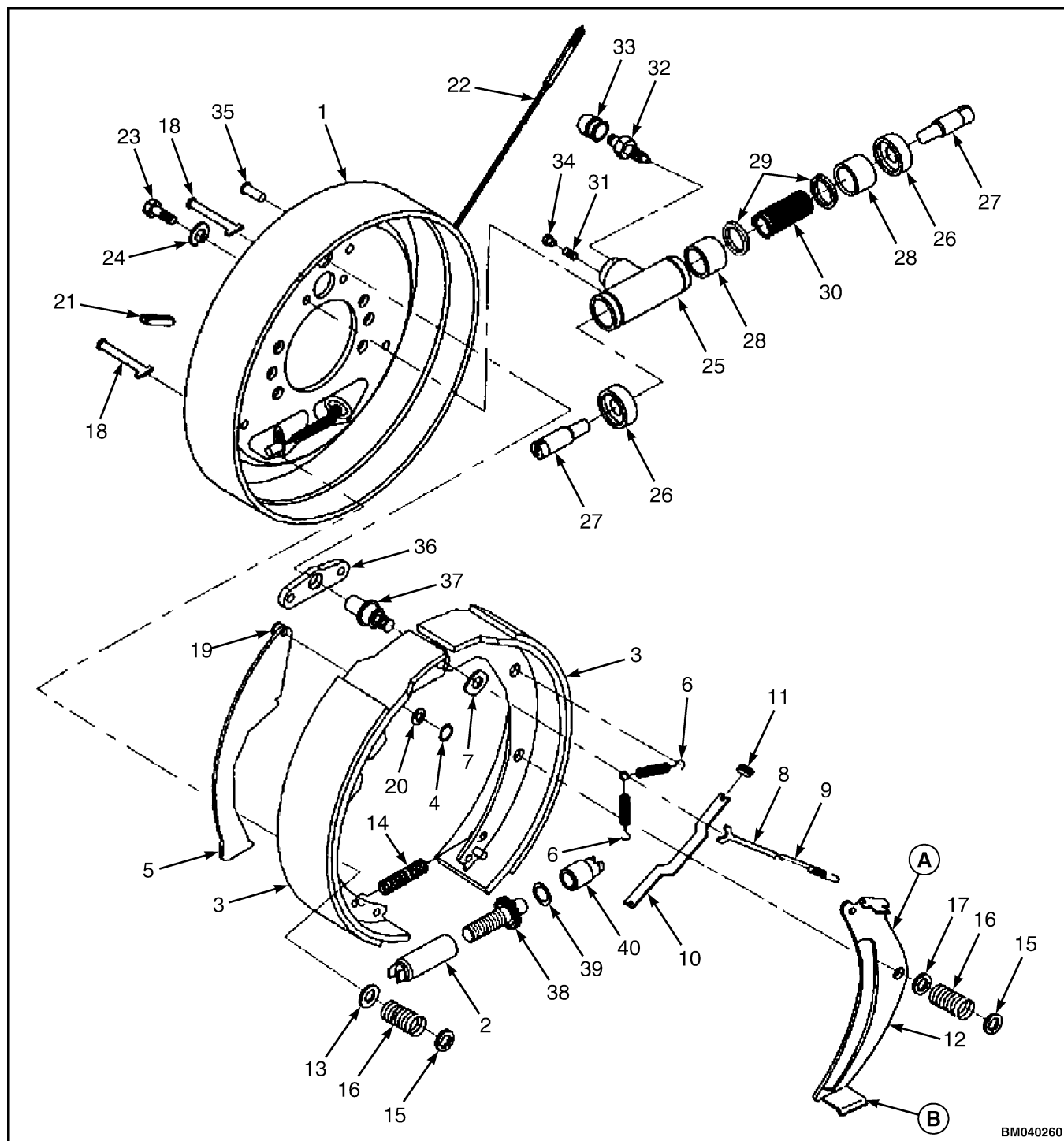
## MAINTENANCE OF DRIVE AXLE

To replace the drive axle wheel nut:

1. Coat tapered roller bearing with lubricating grease.
2. Tighten the lock nuts. Make sure that the rotating torque of the wheel hub is 9.8-29.4 N•m (7.2-21.7 lbf ft).
3. Tighten the half shaft mounting nut. Torque to 96-111 N•m (70.8-81.9 lbf ft).
4. Tighten the wheel mounting nut. Torque to 470-550 N•m (346.7-405.7 lbf ft).
5. Tighten the brake drum mounting. Torque to 206-225 N•m (151.9-166.0 lbf ft).

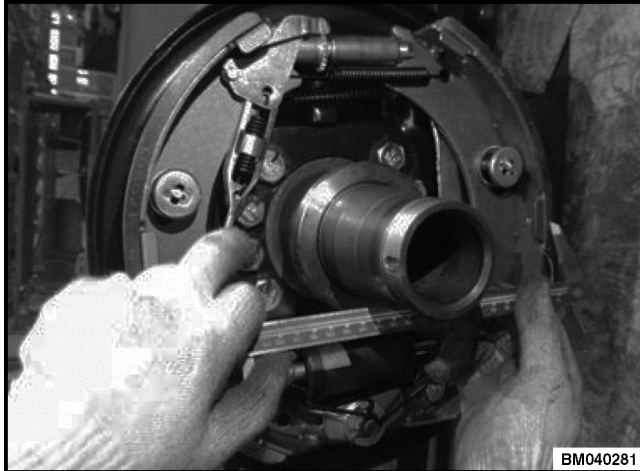


*Figure 18. Dual Wheel Drive Axle*



BM040260

Figure 25. 2-2.5T Wheel Brakes



11. Connect the brake fluid line onto the wheel cylinder.
12. Measure the inner diameter of the brake drum. Adjust the differences between the inner diameter of brake drum and the friction plate of brake shoe to:
  - 0.8-0.9 mm (0.031-0.035 in.) for 2-2.5T trucks.
  - 0.5-0.8 mm (0.019-0.031 in.) for 3-3.5T trucks.

### Operating Test Automatic Clearance Regulator

1. Allow the diameter of brake shoes to approach the installation size. Pull the adjusting lever to rotate. When the adjusting lever is released, it returns to its original place. The adjuster gear will not rotate.

**NOTE:** Even when hand brake is released, the adjuster will still function properly after being assembled.

2. If the adjuster does not return to original position, inspect these items.
  - a. Mount the adjusting lever, the top rod, the top rod spring, and the washer cup.
  - b. Examine whether or not the position of the adjusting lever and adjusting gear is correct (see Figure 36.) Replace the parts if necessary. Check if lever and gear are in contact with each other.

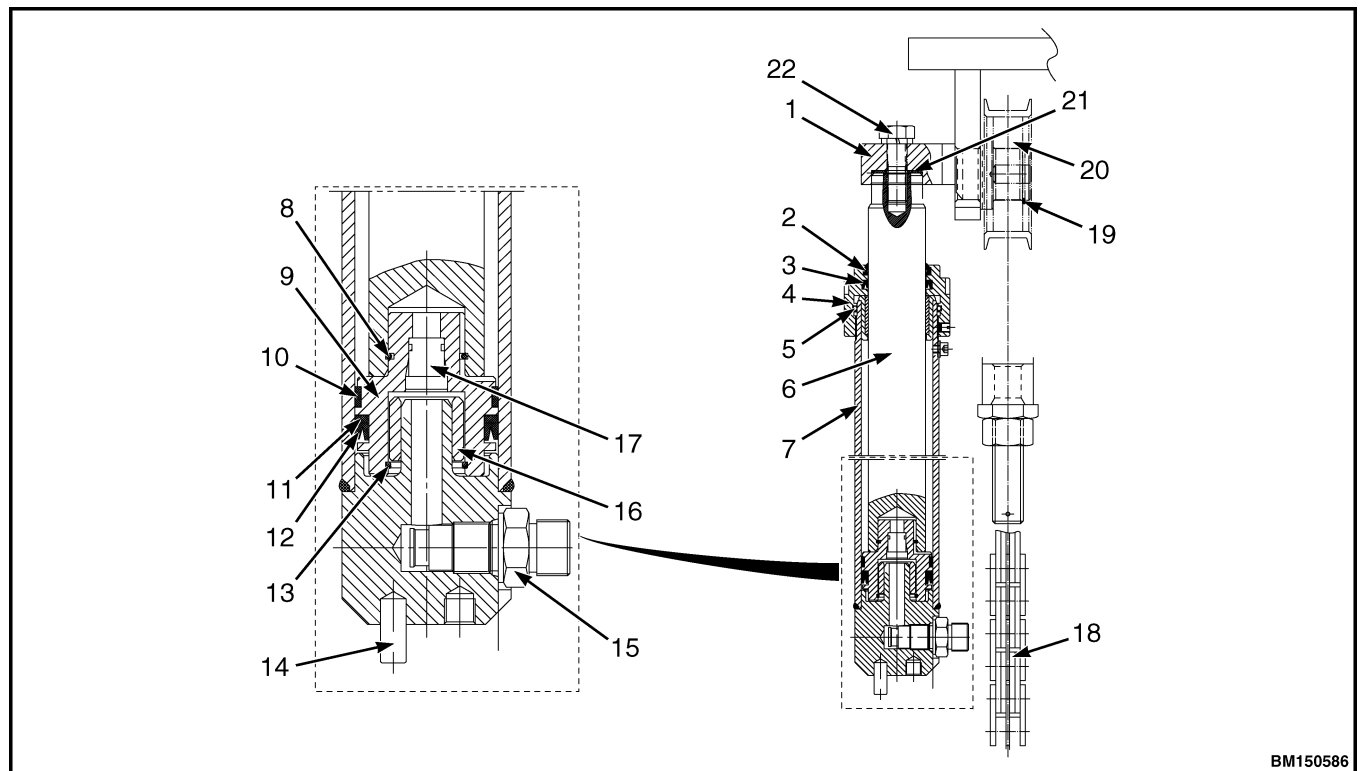
### LIFT CYLINDER

Two single-acting lift cylinders are attached on the back of the outer mast channel, and the bottom part of cylinder is attached to the outer mast channel using pins and bolts. The top part of the cylinder (piston rod) is connected to the cross member of the outer mast channel. The piston strokes must be adjusted to be consistent, for the two cylinders to lift simultaneously.

The lift cylinder is composed of cylinder body, piston, piston rod, cylinder cover, cylinder bottom and sealing parts. One port is located in the lower part of cylinder body. A return pipe is mounted in the upper part of cylinder body for a small amount of leaked fluid to return to the tank. The piston is fastened onto the piston rod using a nut and cotter pin, and one seal

ring, retainer ring and wear ring are fitted on the outer surface of the piston (see Figure 45). The high-pressure fluid moves the piston along the cylinder body. A shaft sleeve and dust ring are mounted in the inner hold of cylinder cover, to support the piston rod, while resisting dust.

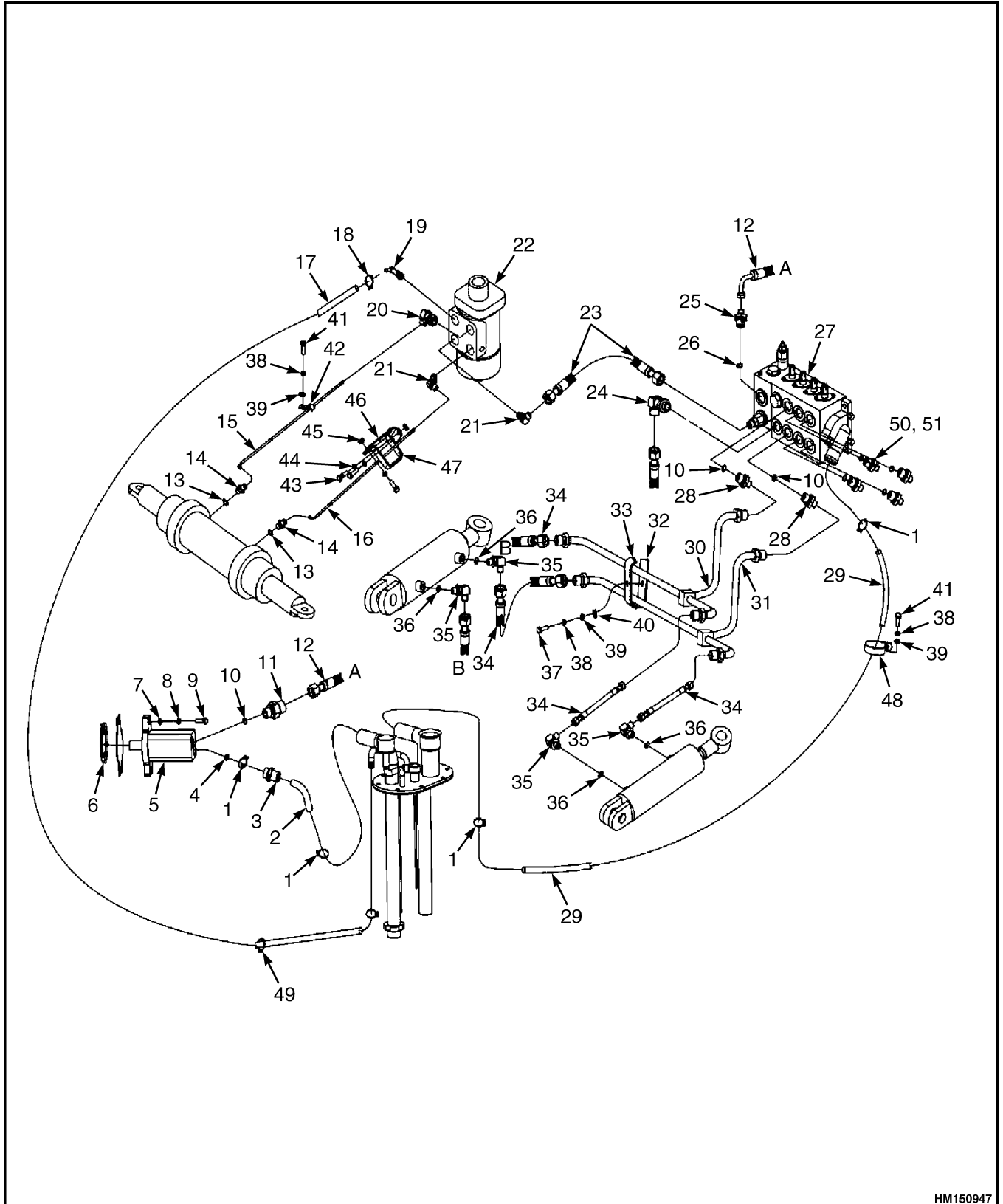
When the lift is commanded, the high-pressure fluid enters through the bottom part of lift cylinder, pushing up the piston attached to the mast and raising the inner mast along with the lift chain. When lower is commanded, the fluid under the piston will flow out under the weight of the forks and cargo, and the inner mast will be lowered. The oil drained out from lift cylinder is controlled by velocity fuse, and returns to tank through multi-way valve.



BM150586

- |                   |                   |                     |
|-------------------|-------------------|---------------------|
| 1. BEAM           | 8. O-RING         | 16. VALVE SLEEVE    |
| 2. WIPER          | 9. PISTON         | 17. CHECK VALVE     |
| 3. SHAFT SEAL     | 10. SUPPORT RING  | 18. HOIST CHAIN     |
| 4. CYLINDER COVER | 11. RETAINER RING | 19. RETAINER RING   |
| 5. O-RING         | 12. SEAL RING     | 20. ROLLER SPROCKET |
| 6. CYLINDER ROD   | 13. RETAINER RING | 21. SHIMS           |
| 7. CYLINDER BODY  | 14. LOCATER PIN   | 22. BOLT            |
|                   | 15. VELOCITY FUSE |                     |

Figure 45. Lifting Cylinder

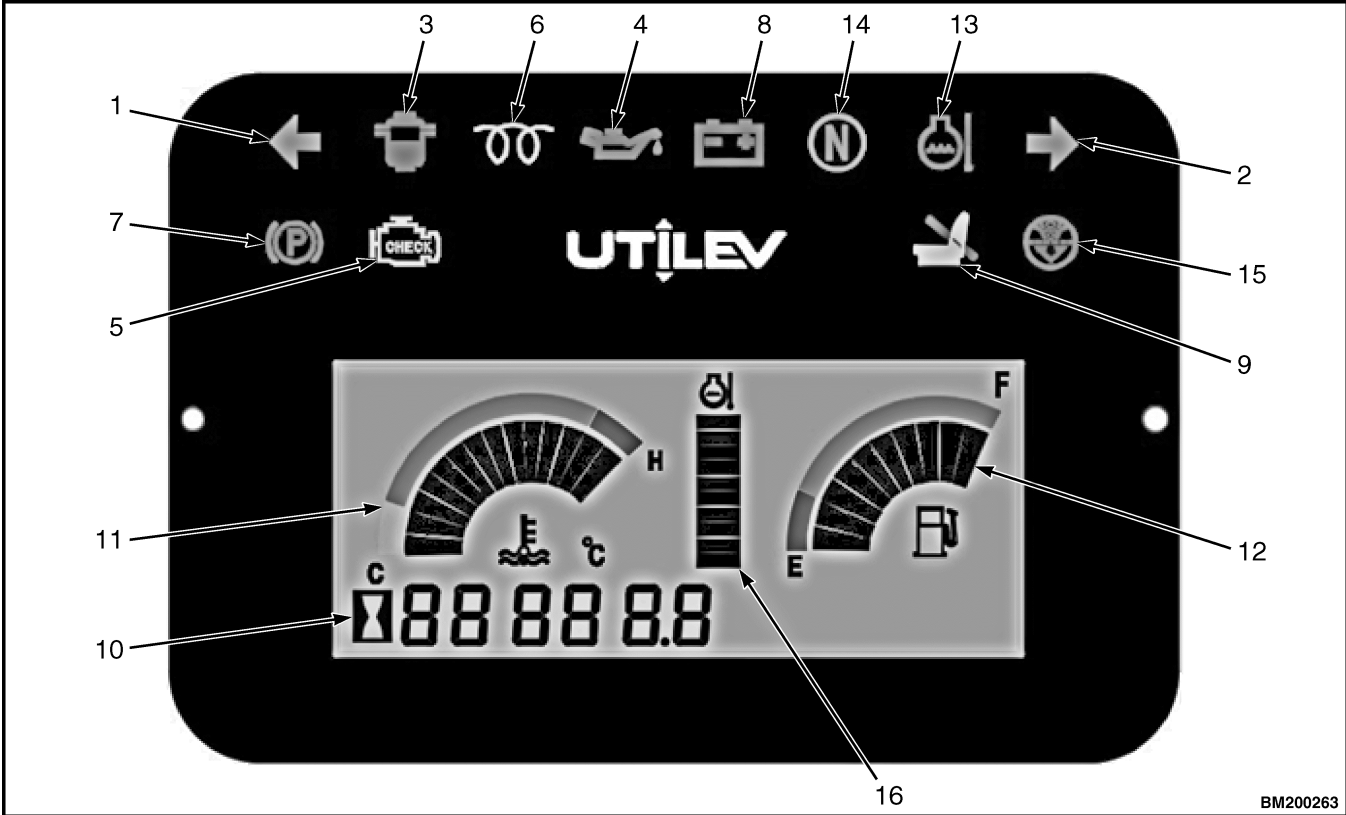


HM150947

Figure 57. Hydraulic Schematic (Diesel and Gasoline Forklift Trucks)

- 3. When performing the battery routine maintenance, wear goggles, rubber gloves and rubber shoes.
- 4. The battery will produce flammable gas, therefore potential risk of explosion exists. It is necessary to avoid short circuits, spark occurrence, and any source of flame.
- 5. Prohibit contact with the battery. The battery electrolyte is dilute sulfuric acid. If contacted with the skin, please immediately rinse affected area with water. If contacted with the eyes, rinse intensively with water and see a doctor as early as possible.

**DESCRIPTION AND SUMMARY OF BASIC TRUCK OPERATIONS**



Item	Description	Function
1	left turn indicator	indicating the work of the left turn signal of forklift
2	right turn indicator	indicating the right turn signal light of forklift
3	oil-water separation indicator lamp	indicating that the water content in the oil-water separator is too high and manual drainage is required
4	low oil pressure indicator lamp	indicating low engine oil pressure
5	Engine Warning Indicator	indicating the engine failure
6	Glow Plug Light	indicating that the Glow Plug works



CLICK HERE TO **DOWNLOAD** THE COMPLETE MANUAL

- Thank you very much for reading the preview of the manual.
- You can download the complete manual from: [www.heydownloads.com](http://www.heydownloads.com) by clicking the link below



- Please note: If there is no response to CLICKING the link, please download this PDF first and then click on it.

CLICK HERE TO **DOWNLOAD** THE COMPLETE MANUAL