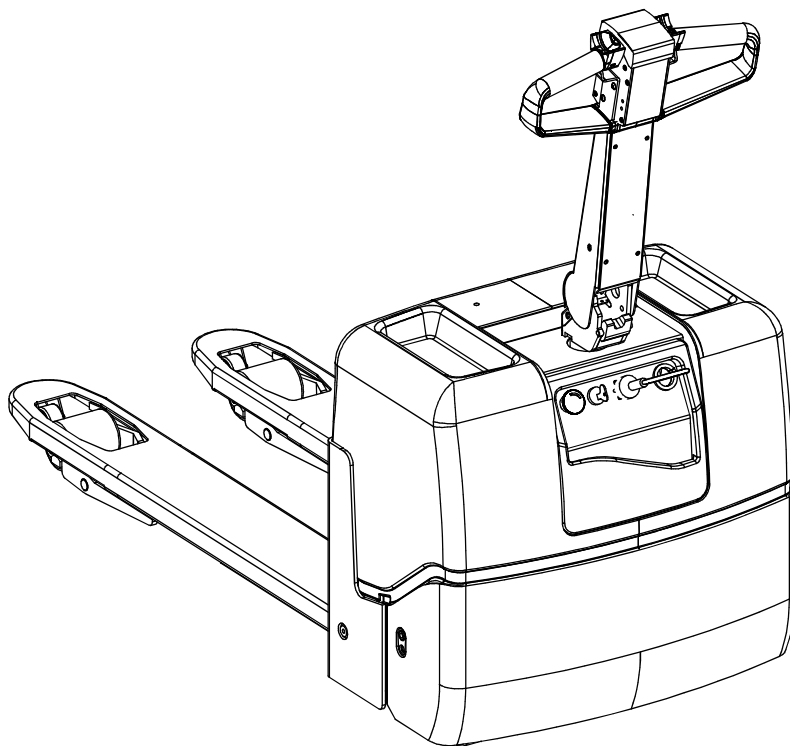


# Service Manual

## GB



### Easymover PP13

Valid from serial number: 555494AA-

Order number: 208588-040

Issued: 2002-06-04 ITS

CLICK HERE TO **DOWNLOAD** THE COMPLETE MANUAL

- Thank you very much for reading the preview of the manual.
- You can download the complete manual from: [www.heydownloads.com](http://www.heydownloads.com) by clicking the link below

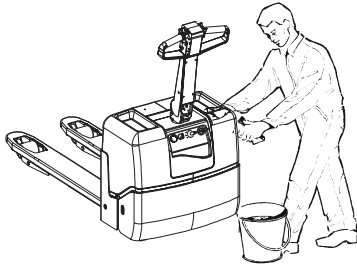


- Please note: If there is no response to CLICKING the link, please download this PDF first and then click on it.

CLICK HERE TO **DOWNLOAD** THE COMPLETE MANUAL

# Introduction Maintenance

Valid from serial number	T-code	C-code/Section
555494AA-	675	P1
Order number	Date	Version
208588-040	2002-06-04	001



## 2 Cleaning and washing

Cleaning and washing of the truck is important to ensure the truck's reliability.

- Carry out general cleaning and washing weekly.

### NOTE!

***Risk of short-circuiting.***

***The electrical system can be damaged***

***Disconnect the battery before washing by pulling out the battery connector.***

### 2.1 External cleaning

- Remove rubbish, etc. from the wheels daily.
- Use a well-known degreasing agent, diluted to a suitable concentration.
- Rinse off loose grime using tepid water.

### NOTE!

***Jamming, corrosion.***

***Mechanical components can be damaged.***

***After washing, the truck should be lubricated as set out in the chapter Maintenance and lubrication chart.***

### 2.2 Cleaning the motor compartment

- Cover the electric motors, connections and valves before washing.

### NOTE!

***Risk of short-circuiting.***

***The electrical system can be damaged.***

***Electrical components must not be cleaned with a high pressure washing unit.***

- Clean the motor compartment using a well-known degreasing agent, diluted to a suitable concentration.
- Rinse off loose grime using tepid water.

# Drive unit/drive gear

Valid from serial number  
555494AA-  
Order number  
208588-040

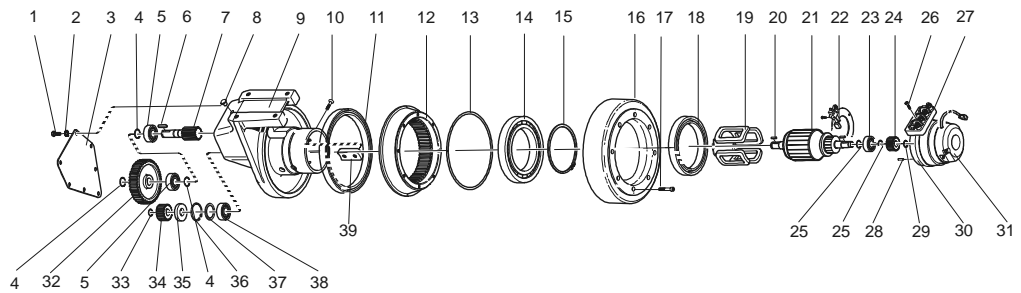
T-code  
675  
Date  
2002-06-04

C-code/Section  
2550  
Version  
001

## Drive unit/drive gear

### Complete

### 1 Component parts



Pos	Benämning	Anm.
1	Screw	7 st
2	Washer	7 st
3	Cap	
4	Locking ring	
5	Ball bearing	
6	Key	
7	Axle	
8	Venting nipple	
9	Gear housing	
10	Screw	8 st
11	Sealing ring	
12	Gear ring	
13	O-ring	
14	Ball bearing	
15	Locking ring	
16	Drive track	
17	Screw	8 pcs. Tightened to 20Nm
18	Locking ring	

## Electrical systems

<b>Valid from serial number</b> 555494AA-	<b>T-code</b> 675	<b>C-code/Section</b> 5000
<b>Order number</b> 208588-040	<b>Date</b> 2002-06-04	<b>Version</b> 001

## 2 List of symbols

Symbol	Description	Function	Notes
A1	Transistor regulator		
A30	Integrated charger		230 V
F 1	Fuse	Drive motor circuit	50 A
F 50	Fuse	Operating circuit A5	5 A
F 51	Fuse	Battery charger	10 A
G1	Battery		24 V
G2	Battery		12 V
H1	Horn		
H81	LED	Battery indicator	
K10	Contactor	Main contactor	
K30	Contactor	Pump motor	
M1	Motor	Drive motor	
M3	Motor	Pump motor	
S10	Switch	Travel brake	Brake lever
S15	Switch	Driving, fork direction	
S16	Switch	Driving, drive wheel direction	
S17	Switch	Key	
S18	Switch	Horn button	
S20	Switch	Safety reversing	
S21	Switch	Emergency switch off	
S31	Switch	Lift height limiter	
S34	Switch	Fork lifting	
S41	Switch	Fork lowering	
S170	Switch	Start block	
S171	Switch		
Y1	Brake		
Y41	Magnetic valve	Fork lowering	

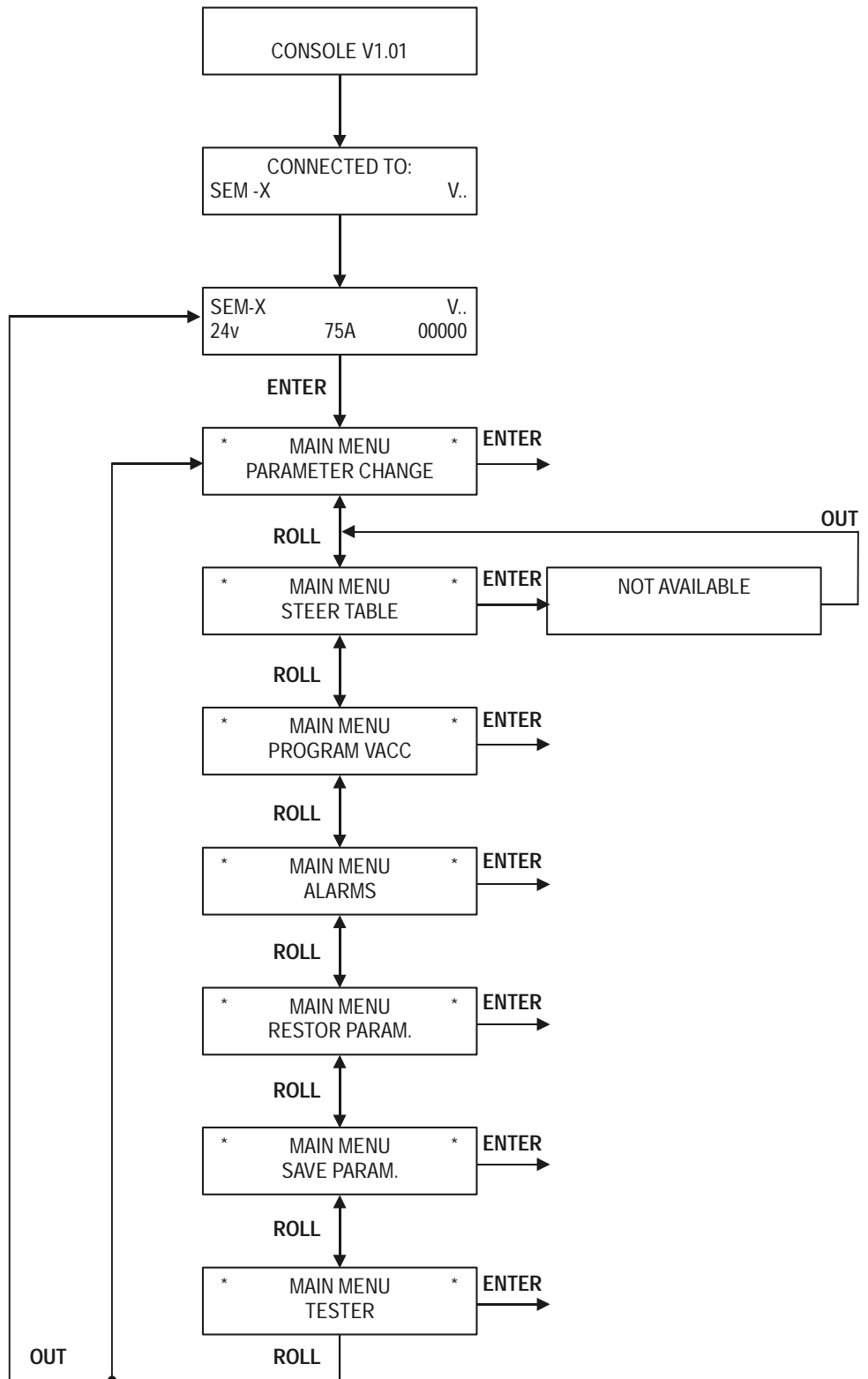
# Electrical systems

Valid from serial number  
555494AA-  
Order number  
208588-040

T-code  
675  
Date  
2002-06-04

C-code/Section  
5000  
Version  
001

## 6 Test



CLICK HERE TO **DOWNLOAD** THE COMPLETE MANUAL

- Thank you very much for reading the preview of the manual.
- You can download the complete manual from: [www.heydownloads.com](http://www.heydownloads.com) by clicking the link below



- Please note: If there is no response to CLICKING the link, please download this PDF first and then click on it.

CLICK HERE TO **DOWNLOAD** THE COMPLETE MANUAL