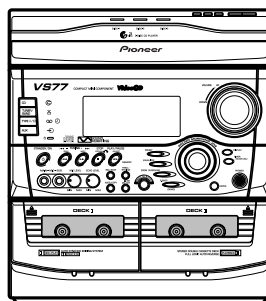


# Service Manual

Pioneer



●XR-VS77

ORDER NO.  
RRV2035

STEREO CD/VCD CASSETTE DECK RECEIVER

# XR-VS77

## XR-VS55

THIS MANUAL IS APPLICABLE TO THE FOLLOWING MODEL(S) AND TYPE(S).

Type	Model		Power Requirement	The Voltage can be converted by the following method.
	XR-VS77	XR-VS55		
DBDXJ	○	○	AC110-127V/220-230V/240V	With the voltage selector
DLXJ/NC	○	○	AC110-127V/220-230V/240V	With the voltage selector

## CONTENTS

1. SAFETY INFORMATION .....	2	7. GENERAL INFORMATION .....	62
2. EXPLODED VIEWS AND PARTS LIST .....	3	7.1 PARTS .....	62
3. SCHEMATIC DIAGRAM .....	16	7.1.1 IC .....	62
4. PCB CONNECTION DIAGRAM .....	34	7.1.2 DISPLAY .....	75
5. PCB PARTS LIST .....	46	7.2 DISASSEMBLY .....	79
6. ADJUSTMENT .....	53	7.3 BLOCK DIAGRAM .....	82
		8. PANEL FACILITIES AND SPECIFICATIONS ....	84

PIONEER ELECTRONIC CORPORATION 4-1, Meguro 1-Chome, Meguro-ku, Tokyo 153-8654, Japan  
 PIONEER ELECTRONICS SERVICE, INC. P.O. Box 1760, Long Beach, CA 90801-1760, U.S.A.  
 PIONEER ELECTRONIC (EUROPE) N.V. Haven 1087, Keetberglaan 1, 9120 Melsele, Belgium  
 PIONEER ELECTRONICS ASIACENTRE PTE. LTD. 501 Orchard Road, #10-00 Wheelock Place, Singapore 238880  
 ©PIONEER ELECTRONIC CORPORATION 1998

CLICK HERE TO **DOWNLOAD** THE COMPLETE MANUAL

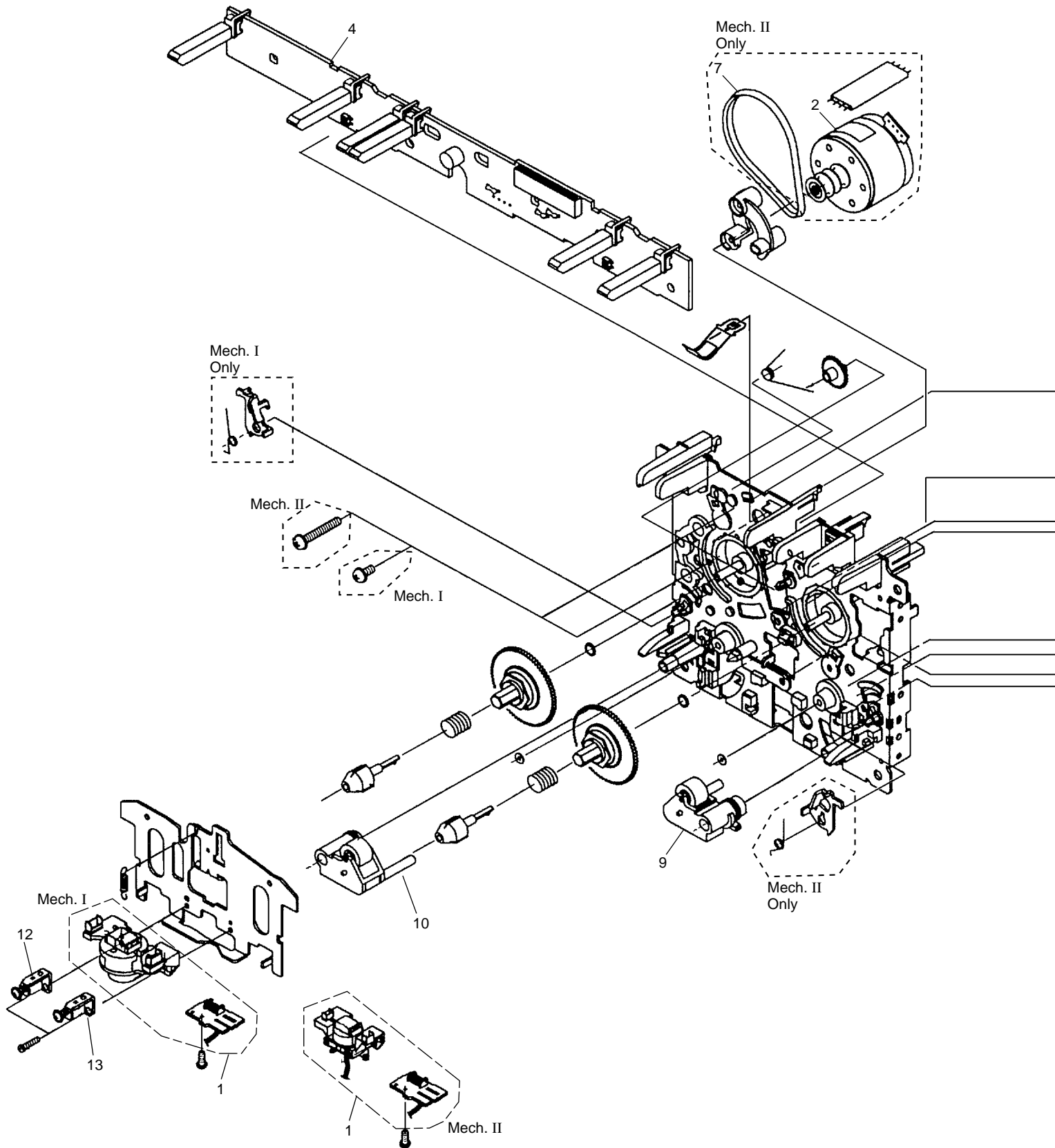
- Thank you very much for reading the preview of the manual.
- You can download the complete manual from: [www.heydownloads.com](http://www.heydownloads.com) by clicking the link below



- Please note: If there is no response to CLICKING the link, please download this PDF first and then click on it.

CLICK HERE TO **DOWNLOAD** THE COMPLETE MANUAL

## 2.7 MECHANISM UNIT (XR-VS77)

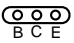
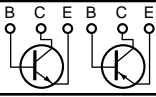

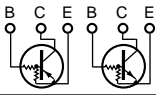
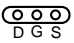
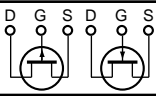

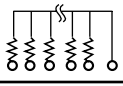
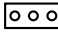
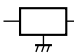




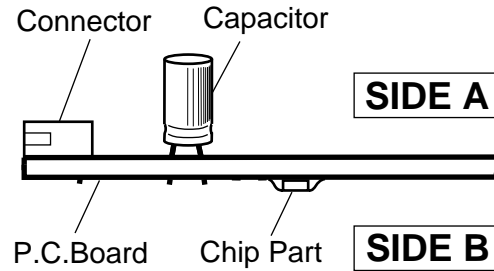
## 4. PCB CONNECTION DIAGRAM

### NOTE FOR PCB DIAGRAMS :

1. Part numbers in PCB diagrams match those in the schematic diagrams.
2. A comparison between the main parts of PCB and schematic diagrams is shown below.

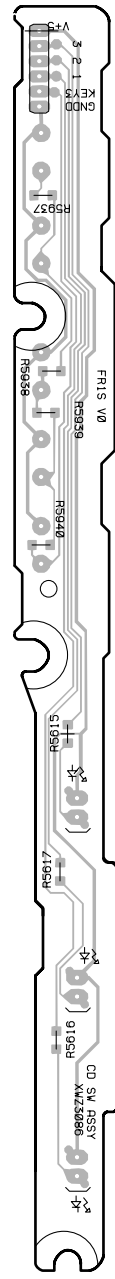
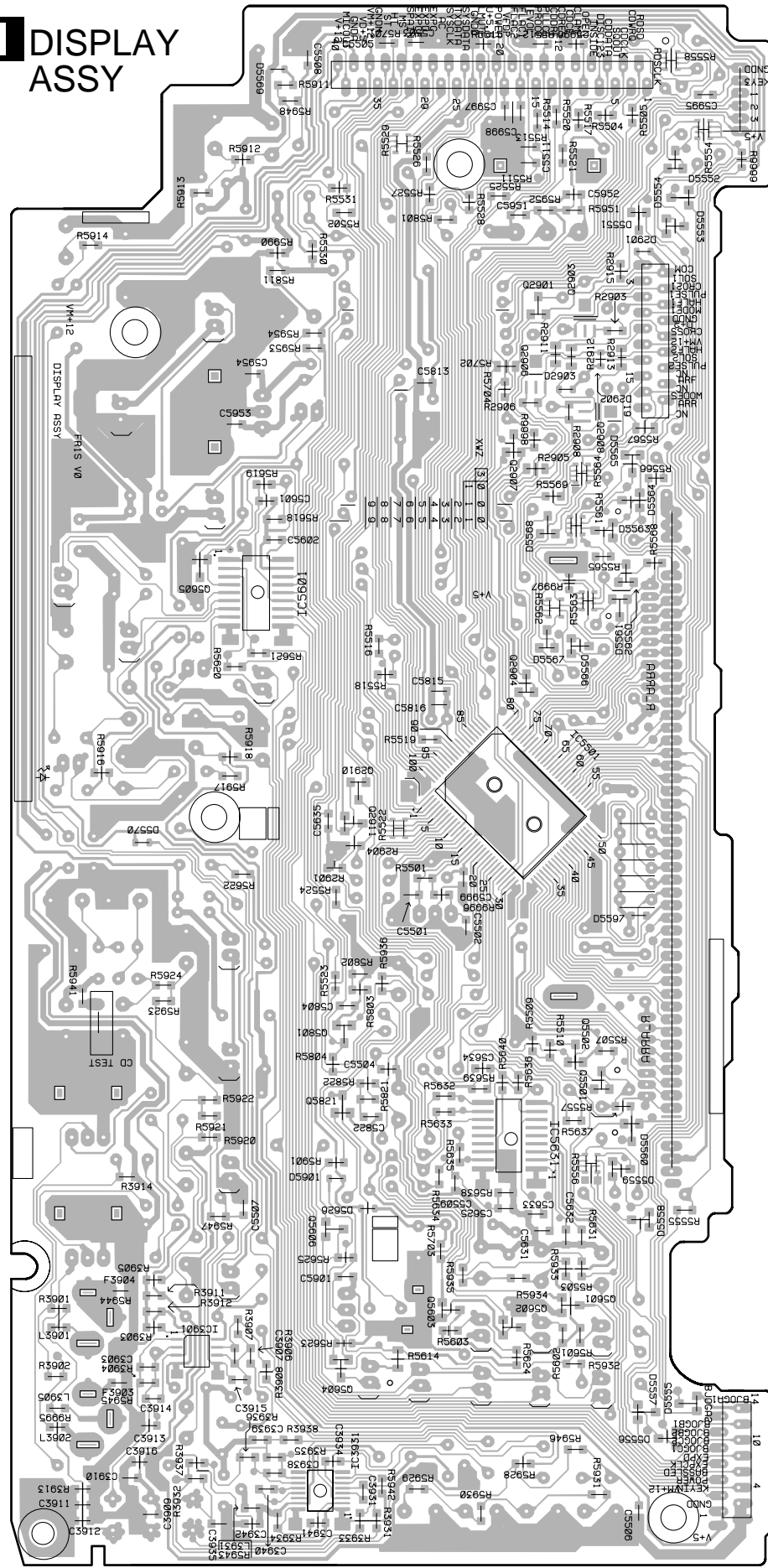
Symbol In PCB Diagrams	Symbol In Schematic Diagrams	Part Name
		Transistor
		Transistor with resistor
		Field effect transistor
		Resistor array
		3-terminal regulator

3. The parts mounted on this PCB include all necessary parts for several destinations.  
For further information for respective destinations, be sure to check with the schematic diagram.
4. View point of PCB diagrams.



**I** DISPLAY ASSY

- Q2903
- Q2901
- Q2906
- Q2908
- Q2907
- Q5605
- IC5601
- Q2904
- IC5501
- Q2910
- Q2911
- Q5801
- Q5502
- Q5501
- Q5821
- IC5631
- Q5606
- Q5601
- Q5604
- IC3901
- IC3931



**J** CD SW LED ASSY

(XNP3012-B)

**SIDE B**



A

B

C

D

## ■ Recording Adjustment

### (1) Bias Oscillation Frequency Adjustment

Step	Mode	Input Signal/ Test Tape	Adjusting Points		Measurement Points	Adjustment Value	Remarks
1	REC	Load the STD-632 test tape and set the recording mode.	Deck II	_____	Between ① point in Fig.7 and GND.	Oscillation frequency to be 105.0kHz ± 2kHz.	If the REC/STOP button for four seconds while the power is in STAND BY mode, the frequency will decrease 2 to 3 kHz.
			DECK I	L2801 (AF Assy)			

### (2) Recording Bias Adjustment

● Since this adjustment affects recording bias, prevent distortion from increasing due to underbias.

Step	Mode	Input Signal/Test Tape	Adjusting Points		Measurement Points	Adjustment Value	Remarks
1	REC	Input a 315Hz signal to the AUX terminal and set the input selector to AUX.	Deck II	_____	TAPE TEST POINT (L, Rch) (AF Assy)	- 23.7dBV	
			DECK I	Input signal level			
2	REC → PLAY	Load the STD-632 test tape and record/playback the 315Hz and 10kHz signals. (see the Note below)	Deck II	_____	TAPE TEST POINT (L, Rch) (AF Assy)	Repeat adjustment until playback level of the 10kHz signal is within 0 ± 0.5dB from that of the 315Hz signal.	
			DECK I	VR2801(Lch) VR2802(Rch)			

Note : Set the 10kHz input signal level to the same value as the 315Hz input signal level of step 1.

### (3) Recording Level Adjustment

Step	Mode	Input Signal/Test Tape	Adjusting Points		Measurement Points	Adjustment Value	Remarks
1	REC	Input a 315Hz signal to the AUX terminal and set the input selector to AUX.	Deck II	Input signal level	TAPE TEST POINT (L, Rch) (AF Assy)	- 7.7dBV	
			DECK I				
2	REC → PLAY	Load the STD-632 test tape and record/playback the 315Hz signal.	Deck II	_____	TAPE TEST POINT (L, Rch) (AF Assy)	Repeat recording, playback and adjustment until playback level of the 315Hz signal becomes - 7.7dBV.	
			DECK I	VR2301(Lch) VR2302(Rch)			

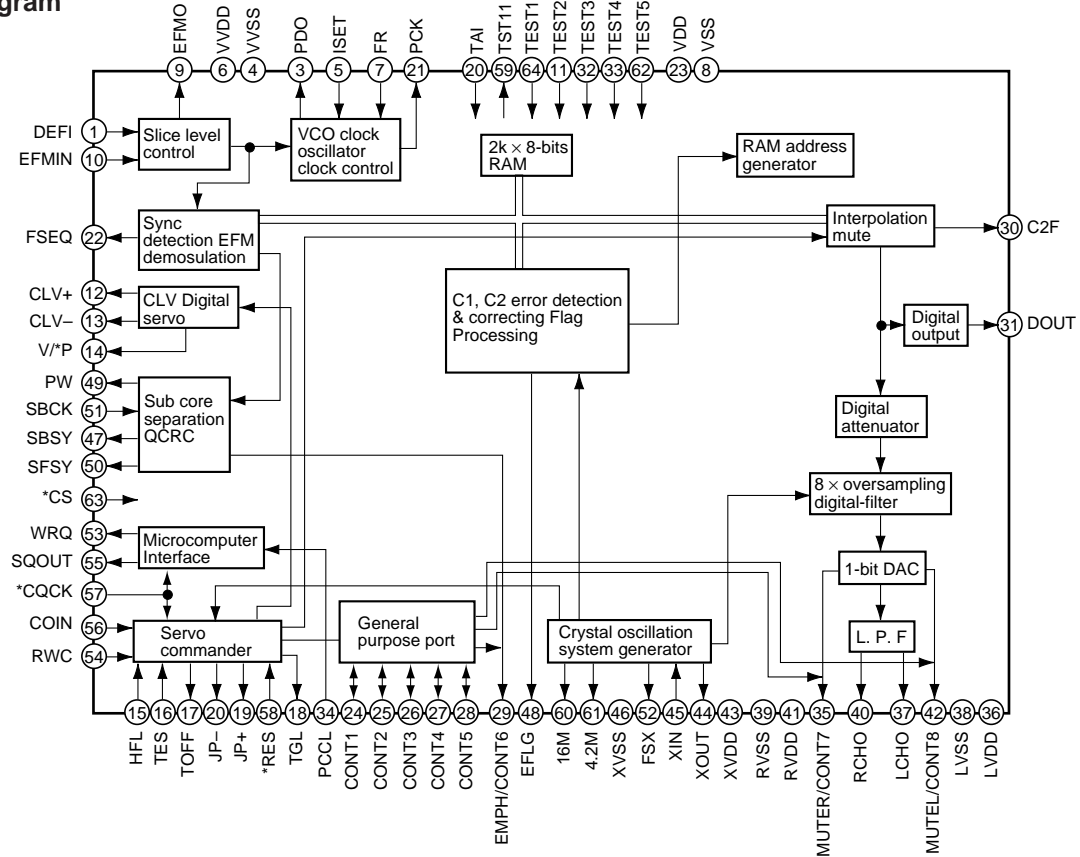
### (4) ALC Operation Check

Step	Mode	Input Signal/Test Tape	Adjusting Points		Measurement Points	Adjustment Value	Remarks
1	REC/ PAUSE	Input a 315Hz signal to the AUX terminal and set the input selector to AUX.	Input signal level		TAPE TEST POINT (L, Rch) (AF Assy)	- 8.2dBV	
2			Set to a level +10dB above the input level at step1.			- 2.2 ± 2.5dBV.	

■ LC78622NE (CD ASSY : IC8301)

• CD DSP IC

● Block Diagram



● Pin Function

No.	Pin Name	I/O	Function	
1	DEFI	I	Defect detection signal (DEF) input pin (Must be connected to 0V when unused).	
2	TAI	I	PLL pins	
3	PDO	O		Test input pin A pull-down resistor is built-in. Must be connected to 0V.
4	VVSS	-		External VCO control phase comparator output pin
5	ISET	AI		Internal VCO ground pin Must be connected to 0V.
6	VVDD	-		PDO output current adjustment resistor connection pin
7	FR	AI		Internal VCO power supply pin
8	VSS	-		VCO frequency range adjustment
9	EFMO	O	Digital system ground pin Must be connected to 0V.	
10	EFMIN	I	Slice level control	
11	TEST2	I	EFM signal output pin	
12	CLV+	O	EFM signal input pin	
13	CLV-	O	Test input pin A pull-down resistor is built-in. Must be connected to 0V.	
14	V/*P	O	Disc motor control output	
15	HFL	I	Can be set to three-value output by microprocessor command.	
16	TES	I	Rough servo/phase control automatic switching monitor output pin	
17	TOFF	O	Outputs a high level during rough servo a low level.	
18	TGL	O	Track detection signal input pin This is a Schmitt input.	
19	JP+	O	Tracking error signal input pin This is a Schmitt input.	
20	JP-	O	Tracking off output pin	
			Tracking gain switching output pin Increase the gain when low.	
			Track jump output	
			Three-value output is also possible when specified by microprocessor command.	

# XR-VS77, XR-VS55

## • Anode Connection

	1G	2G	3G to 6G	7G	8G	9G	10G	11G	12G	13G	14G
P1		a1	a1	a1	a1	a1	L1	B1	B1	B1	R1
P2		a2	a2	a2	a2	a2	L2	B2	B2	B2	R2
P3		h	h	h	h	h	L3	B3	B3	B3	R3
P4		j	j	j	j	j	L4	B4	B4	B4	R4
P5		k	k	k	k	k	L5	B5	B5	B5	R5
P6		b	b	b	b	b	L6	B6	B6	B6	R6
P7	REC	f	f	f	f	f	L7	B7	B7	B7	R7
P8		g	g	g	g	g	L8	B8	B8	B8	R8
P9	ASES	m	m	m	m	m	L9	B9	V-CD	B9	R9
P10		c	c	c	c	c	L10	B10		B10	R10
P11	RPT	e	e	e	e	e	L11	B11	PBC	B11	R11
P12	-1	r	r	r	r	r	L12	B12		B12	R12
P13	PGM	p	p	p	p	p	-	B13		B13	-
P14	RDM	n	n	n	n	n	-	B14	KEY	B14	-
P15		d1	d1	d1	d1	d1	-	B15	L	B15	-
P16	-	d2	d2	d2	d2	d2	-	B16	R	B16	-
P17	-	s	-	-	-		LS	B17		B17	RS
P18	-	t	-	-	-	-	-	B18	S1	B18	-
P19	-	u	-	-	-	-	-	B19	[ (EQ) ]	B19	-
P20	-	w	-	-	-	-	-	B20	[ (SURR.) ]	B20	-
P21	-	-	-	-	-	-	-	B21	[ (P.BASS) ]	B21	-
P22	-	-	-	-	-	-	-	B22	-	B22	-
P23	-	-	-	-	-	-	-	B23	-	B23	-
P24	-	-	-	-	-	-	-	B24	-	B24	-
P25	-	Dp1	Dp1	Dp1	Dp1	-	-	-	-	-	-
P26	-	-	-	Dp2	-	-	-	-	-	-	-
P27	-	-	-		-	-	-	-	-	-	-

CLICK HERE TO **DOWNLOAD** THE COMPLETE MANUAL

- Thank you very much for reading the preview of the manual.
- You can download the complete manual from: [www.heydownloads.com](http://www.heydownloads.com) by clicking the link below



- Please note: If there is no response to CLICKING the link, please download this PDF first and then click on it.

CLICK HERE TO **DOWNLOAD** THE COMPLETE MANUAL