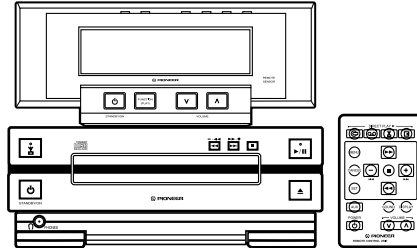


Service Manual

PIONEER®
The Art of Entertainment



ORDER NO.
RRV1946

STEREO CD RECEIVER **XC-L7**

THIS MANUAL IS APPLICABLE TO THE FOLLOWING MODEL(S) AND TYPE(S).

Type	Model	Power Requirement	Remarks
	XC-L7		
KUXJ/CA	○	AC120V	

CONTENTS

1. SAFETY INFORMATION	2	7. GENERAL INFORMATION	50
2. EXPLODED VIEWS AND PARTS LIST	3	7.1 PARTS	50
3. SCHEMATIC DIAGRAM	10	7.1.1 IC	50
4. PCB CONNECTION DIAGRAM	26	7.1.2 DISPLAY	54
5. PCB PARTS LIST	38	7.2 DIAGNOSIS	55
6. ADJUSTMENT	43	7.2.1 DISASSEMBLY	55
		7.2.2 PCB LOCATIONS	58
		7.3 BLOCK DIAGRAM	59
		8. PANEL FACILITIES AND SPECIFICATIONS	60

PIONEER ELECTRONIC CORPORATION 4-1, Meguro 1-Chome, Meguro-ku, Tokyo 153-8654, Japan
PIONEER ELECTRONICS SERVICE, INC. P.O. Box 1760, Long Beach, CA 90801-1760, U.S.A.
PIONEER ELECTRONIC (EUROPE) N.V. Haven 1087, Keetberglaan 1, 9120 Melsele, Belgium
PIONEER ELECTRONICS ASIACENTRE PTE. LTD. 501 Orchard Road, #10-00 Lane Crawford Place, Singapore 0923
 © PIONEER ELECTRONIC CORPORATION 1998

T - ZZK APR. 1998 Printed in Japan

CLICK HERE TO **DOWNLOAD** THE COMPLETE MANUAL

- Thank you very much for reading the preview of the manual.
- You can download the complete manual from: www.heydownloads.com by clicking the link below



- Please note: If there is no response to CLICKING the link, please download this PDF first and then click on it.

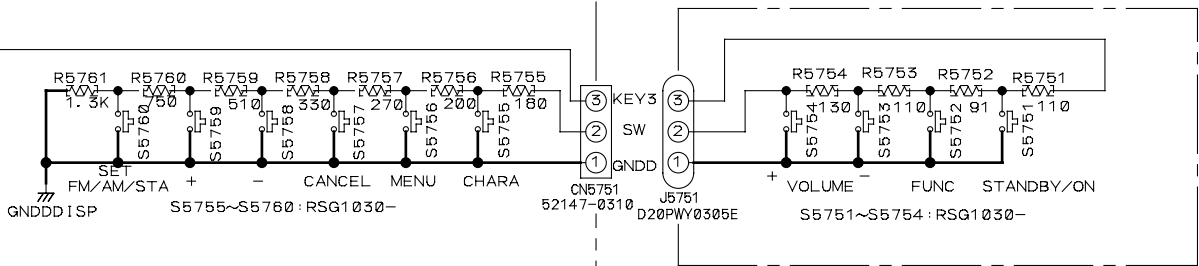
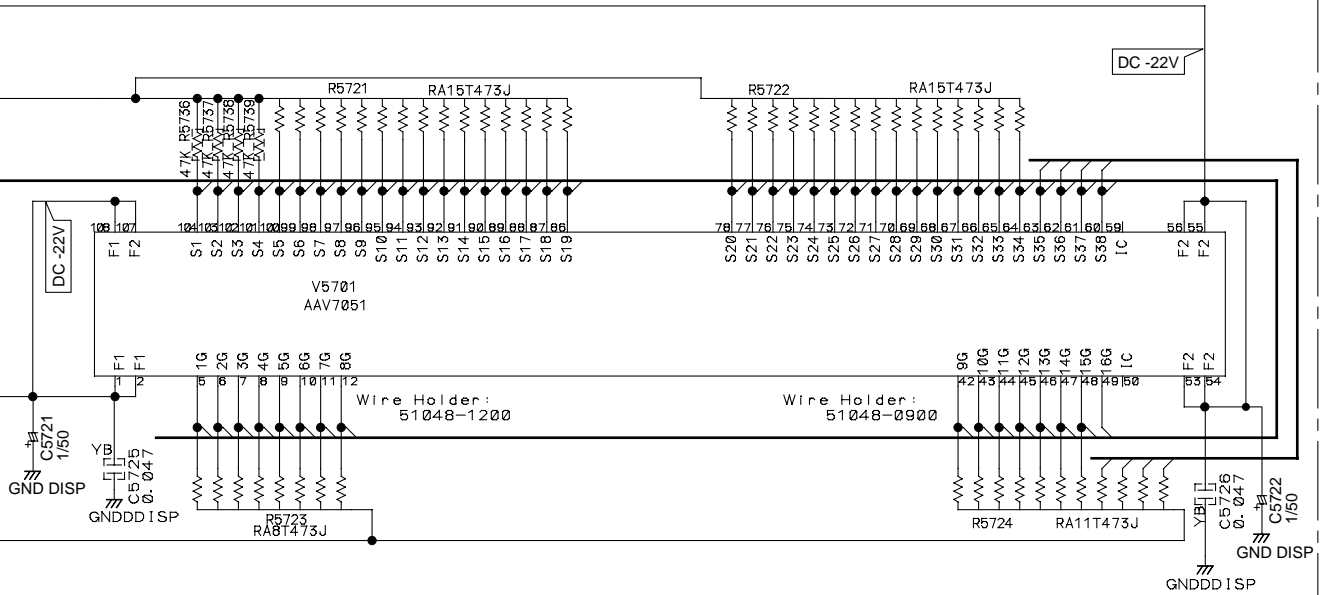
CLICK HERE TO **DOWNLOAD** THE COMPLETE MANUAL

CD FLDP UNIT
 S5755 : CHARACTER
 S5756 : MENU
 S5757 : CANCEL (■)
 S5758 : - (◀▶)
 S5759 : + (▶▶)
 S5760 : SET FM/AM/STATION

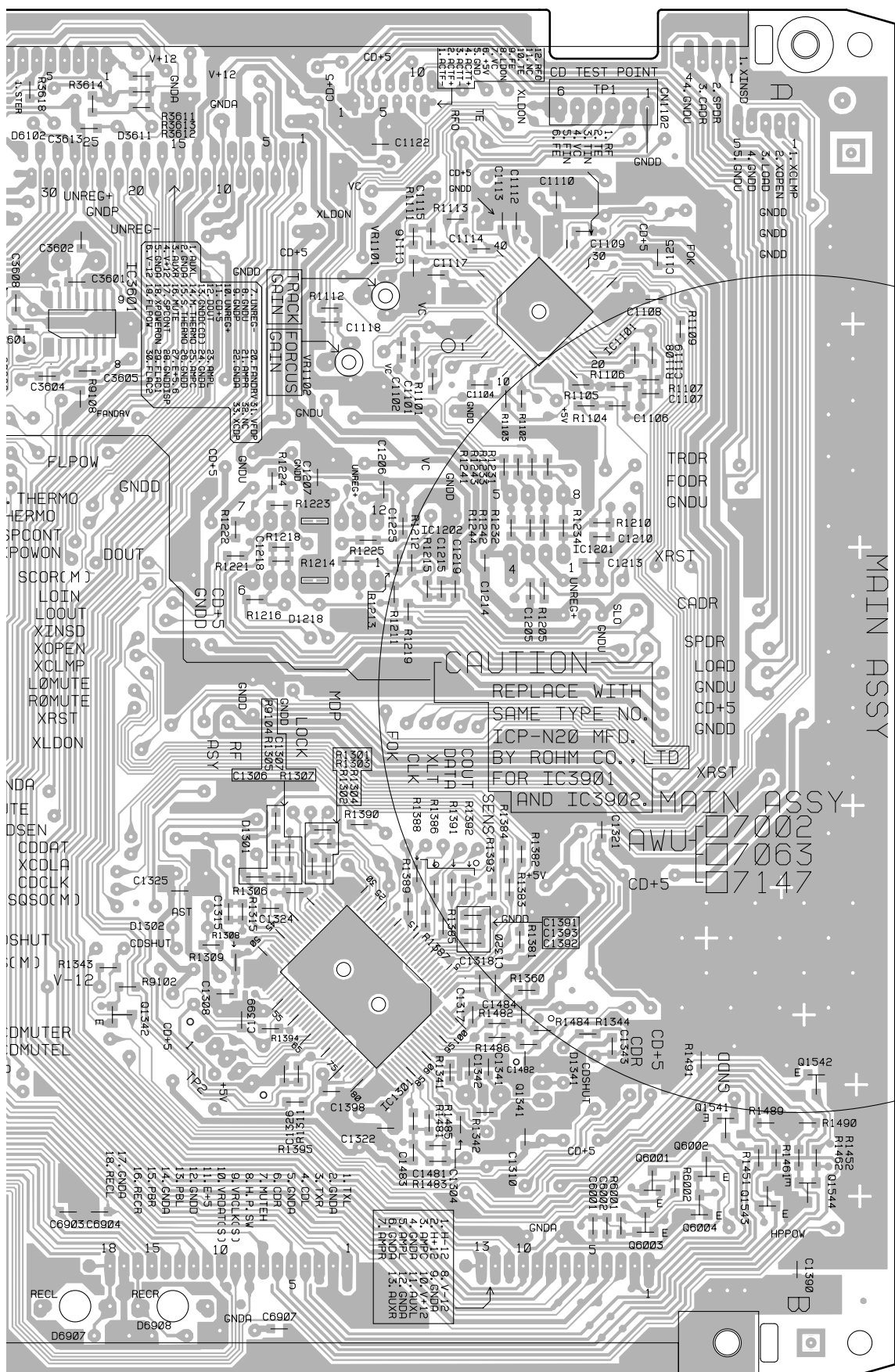
CD DPKEY UNIT
 S5751 : STANDBY/ON
 S5752 : FUNCTION (PLAY)
 S5753 : V] VOLUME
 S5754 : ^] VOLUME

AEB7091 X 2

 (FL spacer)



H CD DPKEY UNIT
 (AWZ8989)



IC1101
IC3601

IC1301
Q1342

Q1541
Q1544
Q6001
Q6004

SIDE B



Mark	No.	Description	Part No.
△	C3047, C3048		CEAT100M50
	C3013, C3014, C3043		CEAT1R0M50
	C3044		CEYA470M10
	C3033, C3034, C3222		CFTLA683J50
	C3509, C3510		CKSQYB102K50
	C3042, C3046		CKSQYF103Z50
	C3050, C3053		CKSQYF473Z50
	C3223		CQMA333J50
	C3031, C3032, C3035, C3036		CQMA682J50

RESISTORS

R3521, R3522	RD1/4PU100J
R3507, R3508	RD1/4PU470J
Other Resistors	RS1/10S□□□J

OTHERS

CN3001 13P SOCKET	KP200TA13L
CN3002 18P SOCKET	KP200TA18L

J POWER HP UNIT

CAPACITORS

C3511, C3512	CKSQYF223Z50
C3541-C3543	CKSQYF473Z50

RESISTORS

All Resistors	RS1/10S□□□J
---------------	-------------

OTHERS

5P CABLE HOLDER	51048-0500
JA3501 MINI JACK	AKN7003
J3501 2mm PITCH JUMPER(5P)	D20PDY0510E
KN3541 EARTH METAL FITTING	VNF1084

K POWER AMP UNIT

SEMICONDUCTORS

△ IC61 (315mA 125V)	AEK7003
△ IC51 (500mA 125V)	AEK7005
△ IC32 (750mA 125V)	AEK7007
△ IC3401	LM3886TF
△ IC53	NJM4558D-D
△ IC31	NJM78M56FA
△ IC3301	STK401-030
△ Q61	2SA1048
△ Q3721, Q3722, Q3731	2SA1162
△ Q23	2SB1238X
△ Q53, Q73	2SB1566
△ Q52, Q72	2SC2458
△ Q3383, Q3711, Q3712, Q3741	2SC2712
△ Q3391, Q3392, Q3411, Q3701, Q3752	2SD2114K
△ Q62	2SD2395
△ Q3393, Q3481	DTA124EK
△ Q21, Q3751	DTA124ES
△ Q3381	DTA144EK
△ Q51	DTC124ES
△ D21, D22, D3751	11ES2

Mark	No.	Description	Part No.
△	D25, D3381, D3701		1SS254
	D3721, D3722, D3731		1SS355
	D31		D2SBA20(B)
	D11		D3SBA20(B)
△	D23		MTZJ33A
△	D24		MTZJ6.2B
△	D51, D61		MTZJ18B
	TH3791, TH3792		AEX7002

RELAYS

RY3331, RY3431	ASR7007
----------------	---------

CAPACITORS

C3307, C3308	CCSQCH100D50
C3403	CCSQCH121J50
C3303, C3304	CCSQCH330J50
C3305, C3306	CCSQCH470J50
C33, C51, C71	CEAL1R0M50

C21	CEANP101M35
C23-C25, C3313, C3314, C3401	CEAT100M50
C3741	CEAT100M50
C22	CEAT101M2A
C3323, C3354	CEAT101M50

C3321, C3322, C3421, C3422	CEAT220M50
C3711	CEAT221M6R3
C3309, C3310	CEAT330M16
C3405, C3411	CEAT470M10
C32	CEAT472M16

C13, C14	CEAT472M35
C31	CEAT682M16
C34	CEJA100M16
C53, C63	CEJA330M16
C3301, C3302	CEZA100M50

C3402	CKSQYB104K25
C3331-C3333, C3431, C3432	CKSQYB473K50
C12, C3355, C3356, C3406	CKSQYF103Z50
C3381, C3423, C3424, C61, C62	CKSQYF473Z50
C72	CKSQYF473Z50

RESISTORS

△ R3725, R3726, R3733(0.1Ω/1W)	ACN7032
R3331, R3332, R3431	RD1/4PU100J
R3481	RD1/4PU123J
R23, R25	RD1/4PU223J
R64, R65	RD1/4PU562J
R3307, R3308, R3403	RD1/4PU563J
△ R26, R27, R73	RFA1/4PS100J
△ R3321, R3322	RFA1/4PS101J
△ R3724	RS1/10S102J
Other Resistors	RS1/10S□□□J

OTHERS

CN101 FFC CONNECTOR(33P)	52045-3345
CN11 9P JUMPER WIRE	KPD9
CN3301	KPE14
14P JUMPER CONNECTOR	VEF1040
PCB BINDER	

● Pin Function

No.	Pin Name	I/O	Function
1	VDD	–	Power supply (+5V)
2	VSS	–	GND
3	LMUT	O	Left-channel zero detection flag
4	RMUT	O	Right-channel zero detection flag
5	TES2	O	TEST output pin;normally open
6	CKOUT	O	Master clock frequency-divider output Selects and outputs XTAI × 1, × 1/2, × 1/4 or low only
7	SQCK	I	SQSO readout clock input
8	SQSO	O	Sub Q 80-bit serial output
9	SENS	O	SENS output to CPU
10	DATA	I	Serial data input from CPU
11	XLAT	I	Latch input from CPU Serial data is latched at the falling edge
12	CLOK	I	Serial data transfer clock input from CPU
13	SEIN	I	SENS input from SSP
14	CNIN	I	Track jump count signal input
15	DATO	O	Serial data output to SSP
16	XLTO	O	Serial data latch output to SSP Latched at the falling edge
17	CKO	O	Serial data transfer clock output to SSP
18	SPOA	I	Microcomputer extended interface (input A)
19	SPOB	I	Microcomputer extended interface (input B)
20	SPOC	I	Microcomputer extended interface (input C)
21	SPOD	I	Microcomputer extended interface (input D)
22	XLON	O	Microcomputer extended interface (output)
23	FOK	I	Focus OK input Used for SENS output and the servo auto sequencer
24	VDD	–	Power supply (+5V)
25	VSS	–	GND
26	MON	O	Spindle motor on/off control output
27	MDP	O	Spindle motor servo control
28	MDS	O	
29	LOCK	O	GFS is sampled at 460Hz;when GFS is high, this pin outputs a high signal If GFS is low eight consecutive samples, this pin outputs low
30	PWMI	I	Spindle motor external control input
31	TES0	I	TEST pin;normally GND
32	TES1		
33	VPCO2	O	Wide-band EFM PLL charge pump output Turned on/off by FCSW of address E
34	VPCO1	O	Charge pump output for wide-band EFM PLL
35	VCKI	I	VCO2 oscillation input for the wide-band EFM PLL
36	V16M	O	VCO2 oscillation output for the wide-band EFM PLL
37	VCTL	I	VCO2 control voltage input for the wide-band EFM PLL
38	PCO	O	Master PLL charge pump output
39	FILO	O	Master PLL (slave=digital PLL) filter output
40	FILI	I	Master PLL filter input
41	AVSS	–	Analog GND
42	CLTV	I	Master VCO control voltage input
43	AVDD	–	Analog power supply (+5V)
44	RF	I	EFM signal input
45	BIAS	I	Constant current input of the asymmetry circuit
46	ASYI	I	Asymmetry comparator voltage input
47	ASYO	O	EFM full-swing output (low=VSS, high=VDD)
48	ASYE	I	Low:asymmetry circuit off;high:asymmetry circuit on
49	WDCK	O	D/A interface Word clock f=2fs
50	LRCK	O	D/A interface LR clock output f=fs
51	LRCKI	I	LR clock input
52	PCMD	O	D/A interface Serial data output (two's complement, MSB first)
53	PCMDI	I	D/A interface Serial data input (two's complement, MSB first)

CLICK HERE TO **DOWNLOAD** THE COMPLETE MANUAL

- Thank you very much for reading the preview of the manual.
- You can download the complete manual from: www.heydownloads.com by clicking the link below



- Please note: If there is no response to CLICKING the link, please download this PDF first and then click on it.

CLICK HERE TO **DOWNLOAD** THE COMPLETE MANUAL