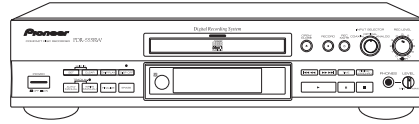


Service Manual

Pioneer



ORDER NO.
RRV1983

COMPACT DISC RECORDER

PDR-555RW

THIS MANUAL IS APPLICABLE TO THE FOLLOWING MODEL(S) AND TYPE(S).

Type	Model	Power Requirement	Remarks
	PDR-555RW		
KU/CA	○	AC120V	
MY	○	AC220-230V	

- Refer to the service guide RRV2055 for PDR-555RW.

FOR U.S. MODELS

NECESSARY INFORMATION FOR DHHS RULES MARKED ON THE REAR BASE AND ON THE TOP OF CD MECHANISM AS BELOW.

DANGER – LASER RADIATION WHEN OPEN.
AVOID DIRECT EXPOSURE TO BEAM.

CONTENTS

1. SAFETY INFORMATION	2	7. GENERAL INFORMATION	55
2. EXPLODED VIEWS AND PARTS LIST	4	7.1 PARTS	55
3. SCHEMATIC DIAGRAM	10	7.1.1 IC	55
4. PCB CONNECTION DIAGRAM	32	7.1.2 DISPLAY	67
5. PCB PARTS LIST	44	8. PANEL FACILITIES AND SPECIFICATIONS ..	.69
6. ADJUSTMENT	49		

CLICK HERE TO **DOWNLOAD** THE COMPLETE MANUAL

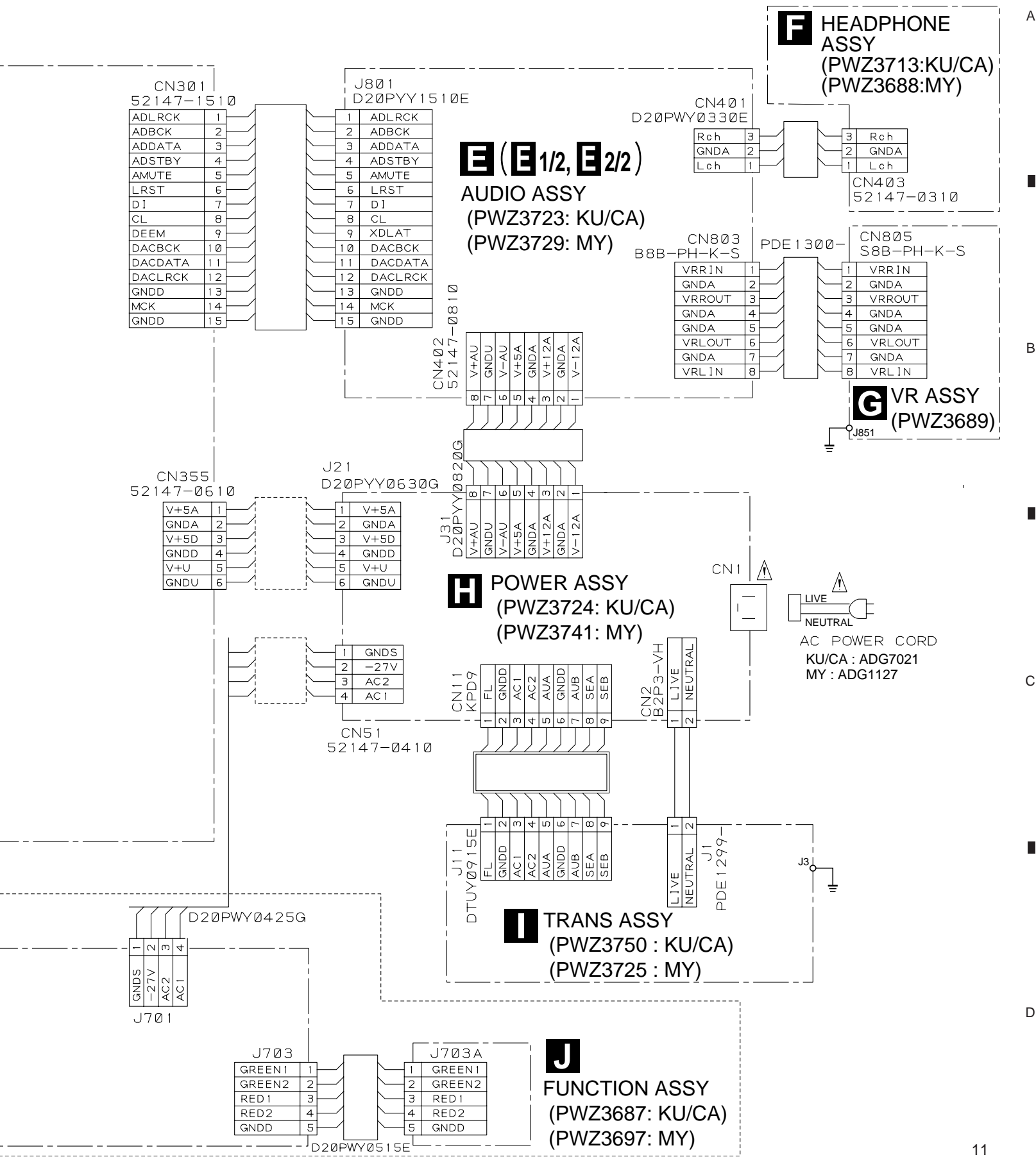
- Thank you very much for reading the preview of the manual.
- You can download the complete manual from: www.heydownloads.com by clicking the link below

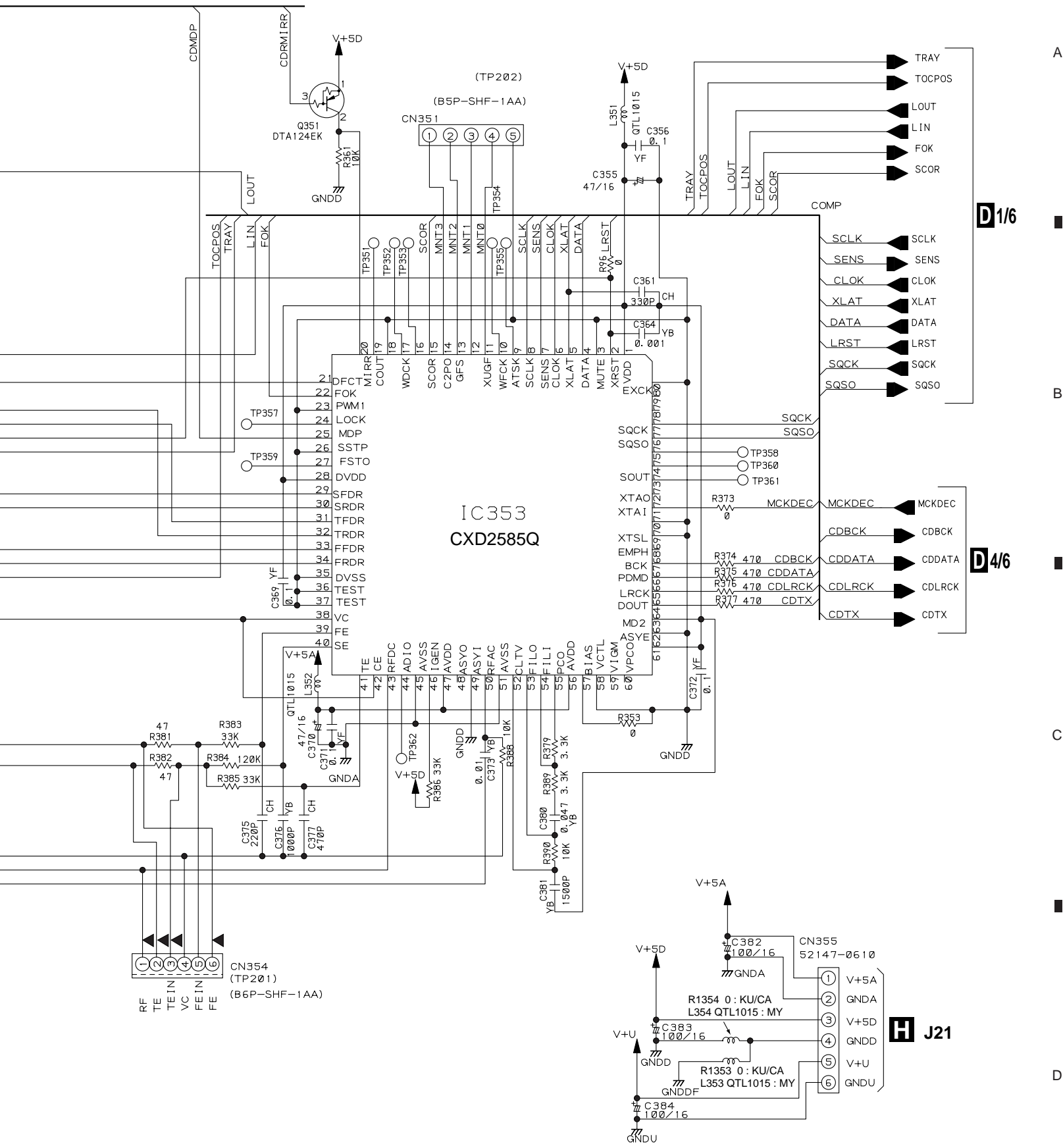


- Please note: If there is no response to CLICKING the link, please download this PDF first and then click on it.

CLICK HERE TO **DOWNLOAD** THE COMPLETE MANUAL

Note : When ordering service parts, be sure to refer to "EXPLODED VIEWS and PARTS LIST" or "PCB PARTS LIST".



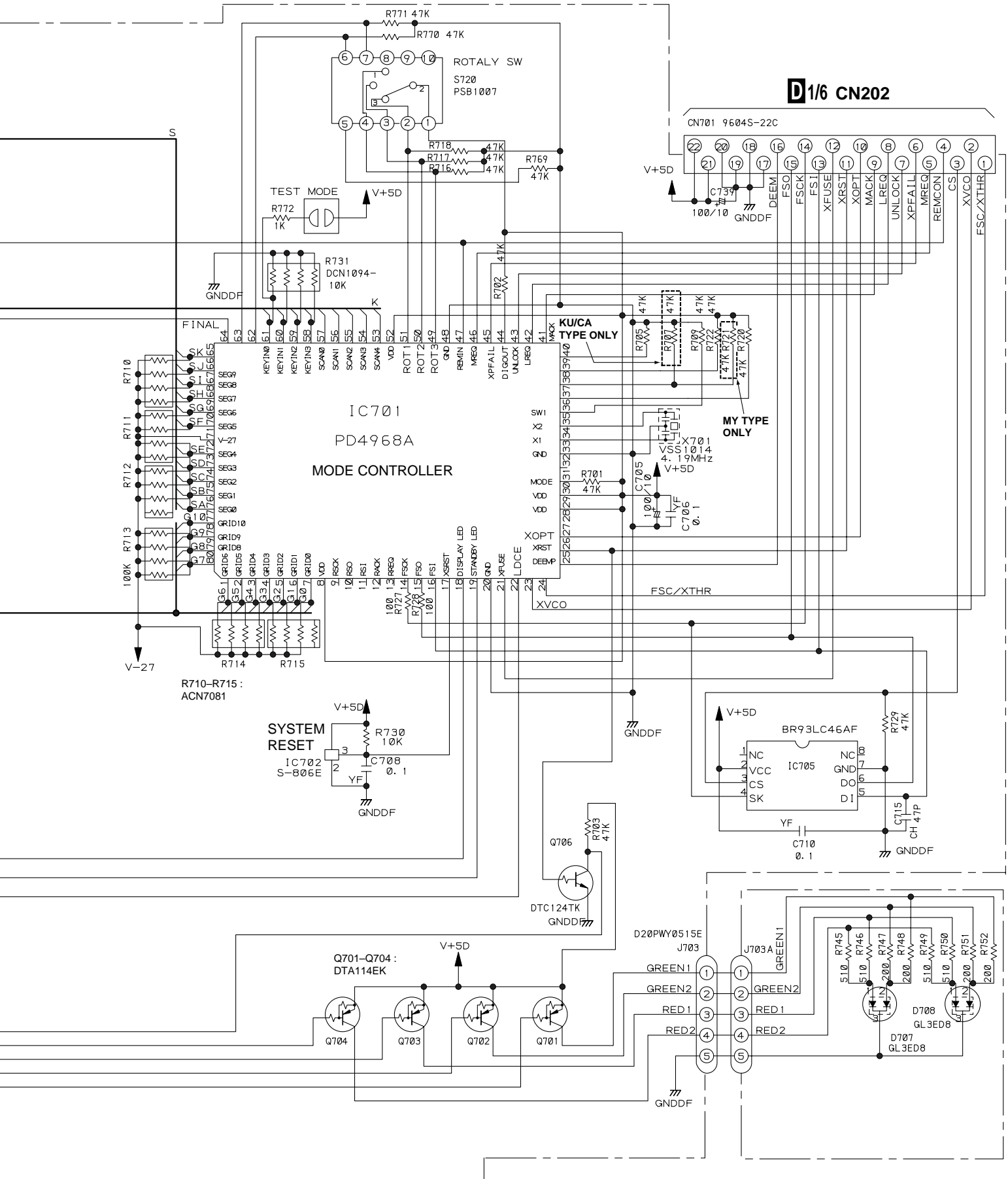


D 1/6

D 4/6

H J21

D 5/6



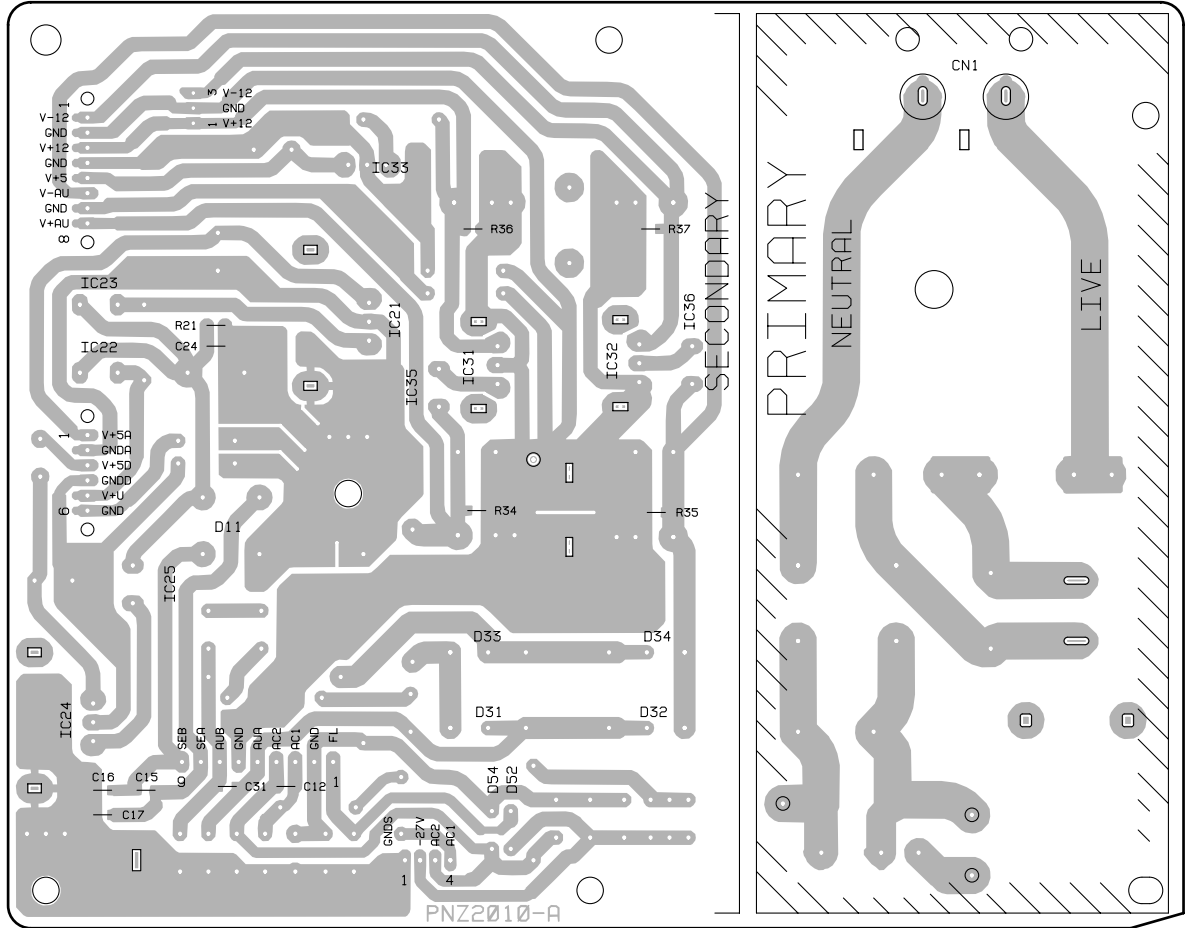
A

B

C

D

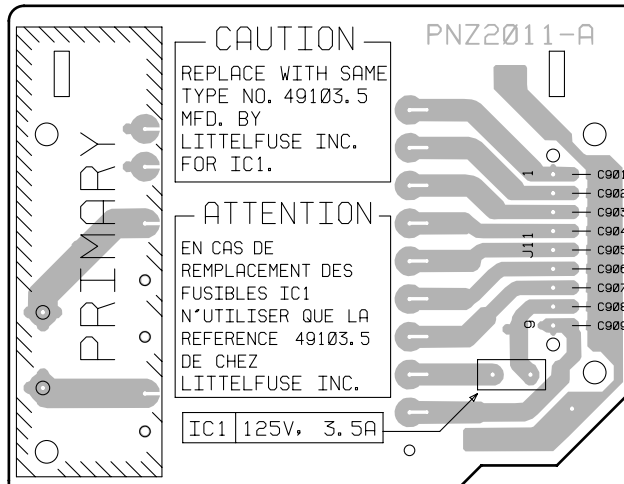
POWER ASSY



(PNP1446-A)

TRANS ASSY

SIDE B



(PNP1456-A)

6.4.2 CD-R Record Power Adjustment

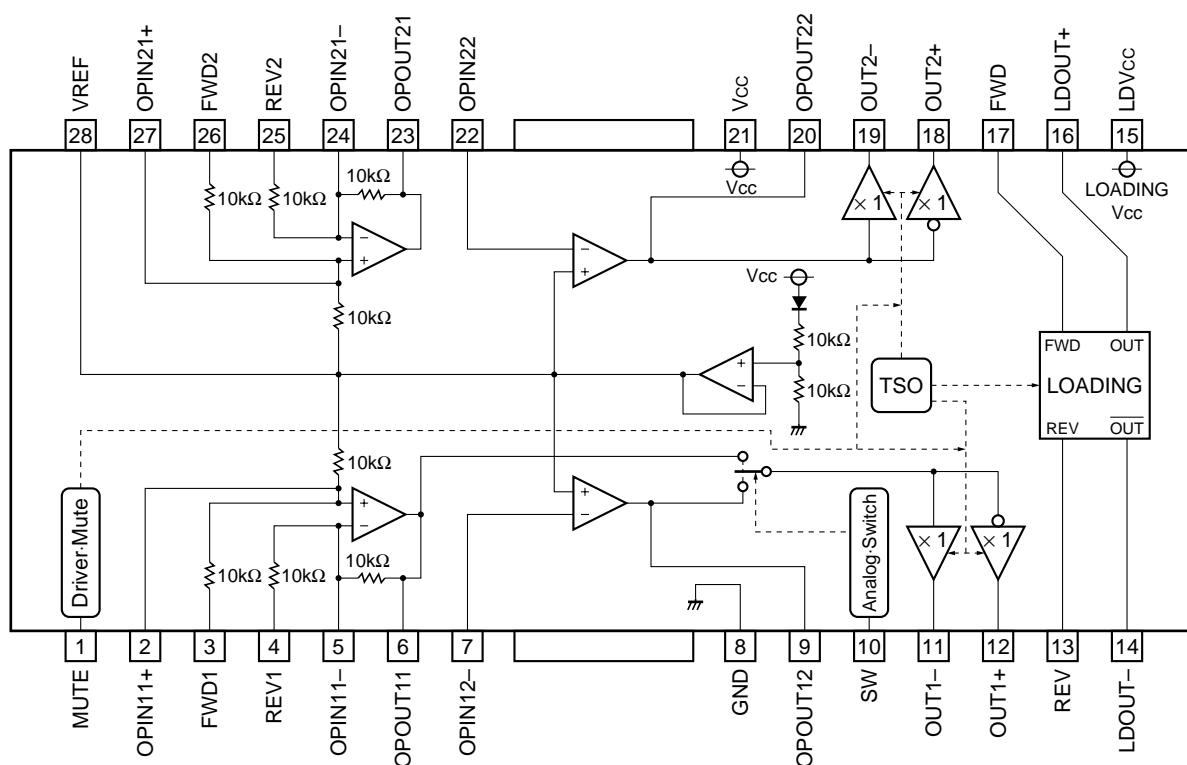
Test Point	Pickup objective lens
Adjustment Point	VR102 (R REC. PW1), VR103 (R REC. PW2)
Adjustment Value	VR102 : 4.60 mW \pm 0.1 mW VR103 : Addition of 0.1 mW \pm 0.01 mW to the adjustment value of VR102
<p>[Procedure]</p> <p>(1) Turn VR102 and VR103 completely counterclockwise to set their power output to minimum.</p> <p>(2) Press the ERASE button once so that "CD-R" appears on the FL display. If the indication is "CD" or "CD-RW," press the ERASE button repeatedly until "CD-R" is displayed on the FL display.</p> <p>(3) Press the RECORD button. The LED for confirmation of LD emission will light in orange.</p> <p>(4) Press the REC MUTE button. The LED for confirmation of LD emission will light in red. The LD is emitting in this status.</p> <p>Adjustment of CD-R record power</p> <p>(5) Turn VR102 clockwise until the adjusted value is 4.60 mW \pm 0.1 mW.</p> <p>Adjustment of CD-R overdrive power</p> <p>(6) Turn VR103 clockwise until the adjusted value becomes adjustment value at Step 5 above + (0.1 mW \pm 0.01 mW).</p> <p>(7) Press the STOP button to shut off the LD.</p>	

6.4.3 CD-RW Record Power Adjustment

Test Point	Pickup objective lens
Adjustment Point	VR104 (RW REC. PW0), VR106 (RW REC. PW2), VR105 (RW REC. PW1)
Adjustment Value	VR104 : 0.40 mW \pm 0.05 mW VR106 : 2.40 mW \pm 0.1 mW VR105 : 5.90 mW \pm 0.1 mW
<p>[Procedure]</p> <p>(1) Turn VR104, VR105 and VR106 completely counterclockwise to set their power output to minimum.</p> <p>(2) Press the ERASE button twice so that "CD-RW" appears on the FL display. If the indication is "CD" or "CD-R," press the ERASE button repeatedly until "CD-RW" appears on the FL display.</p> <p>(3) Press the RECORD button. The LED for confirmation of LD emission will light in orange.</p> <p>(4) Press the REC MUTE button. The LED for confirmation of LD emission will light in red. The LD is emitting in this status.</p> <p>(5) Turn VR104 clockwise until the adjusted value is 0.40 mW \pm 0.05 mW.</p> <p>Adjustment of CD-RW record power</p> <p>(6) Turn VR106 clockwise until the adjusted value is 2.40 mW \pm 0.1 mW.</p> <p>Adjustment of CD-RW erase power</p> <p>(7) Turn VR105 clockwise until the adjusted value is 5.90 mW \pm 0.1 mW.</p> <p>(8) Press the STOP button to shut off the LD.</p>	

■ BA5932FP (SERVO DIGITAL ASSY : IC352)

- Driver IC
- Block Diagram



● Pin Function

No.	Pin Name	Function	No.	Pin Name	Function
1	MUTE	Mute pin	15	LDVcc	Vcc for loading and output H bridge section
2	OPIN11+	OP amp. non-inverting input	16	LDOUT+	Loading positive output
3	FWD1	Forward input	17	FWD	Loading forward input
4	REV1	Reverse input	18	OUT2+	Driver output
5	OPIN11-	OP amp. inverting input	19	OUT2-	Driver output
6	OPOUT11	OP amp. output	20	OPOUT22	OP amp. output
7	OPIN12-	OP amp. inverting input	21	Vcc	Vcc for two axes driver and loading pre section
8	GND	Sub-straight GND	22	OPIN22	OP amp. inverting input
9	OPOUT12	OP amp. output	23	OPOUT21	OP amp. output
10	SW	Analog switch input	24	OPIN21-	OP amp. inverting input
11	OUT1-	Driver output	25	REV2	Reverse input
12	OUT1+	Driver output	26	FWD2	Forward input
13	REV	Loading reverse input	27	OPIN21+	OP amp. non-inverting input
14	LDOUT-	Loading negative output	28	VREF	Reference voltage output

CLICK HERE TO **DOWNLOAD** THE COMPLETE MANUAL

- Thank you very much for reading the preview of the manual.
- You can download the complete manual from: www.heydownloads.com by clicking the link below



- Please note: If there is no response to CLICKING the link, please download this PDF first and then click on it.

CLICK HERE TO **DOWNLOAD** THE COMPLETE MANUAL