


Pioneer *sound.vision.soul*

**Service
Manual**

TOYOTA

ORDER NO.
CRT3108

 **LEXUS LS430**
AUDIO SYSTEM
HEAD UNIT

VEHICLE	DESTINATION	PRODUCED AFTER	TOYOTA PART No.	ID No.	PIONEER MODEL No.
LEXUS LS430	U.S.A., CANADA	August 2003	86120-50B60	P6834	FX-MG9187ZT/UC
LEXUS LS430	U.S.A., CANADA	August 2003	86120-50B70	P6834	FX-MG9187ZT-91/UC
LEXUS LS430	U.S.A., CANADA	August 2003	86120-50B80	P6835	FX-MG9687ZT/UC
LEXUS LS430	U.S.A., CANADA	August 2003	86120-50B90	P6835	FX-MG9687ZT-91/UC

CLICK HERE TO **DOWNLOAD** THE COMPLETE MANUAL

- Thank you very much for reading the preview of the manual.
- You can download the complete manual from: www.heydownloads.com by clicking the link below

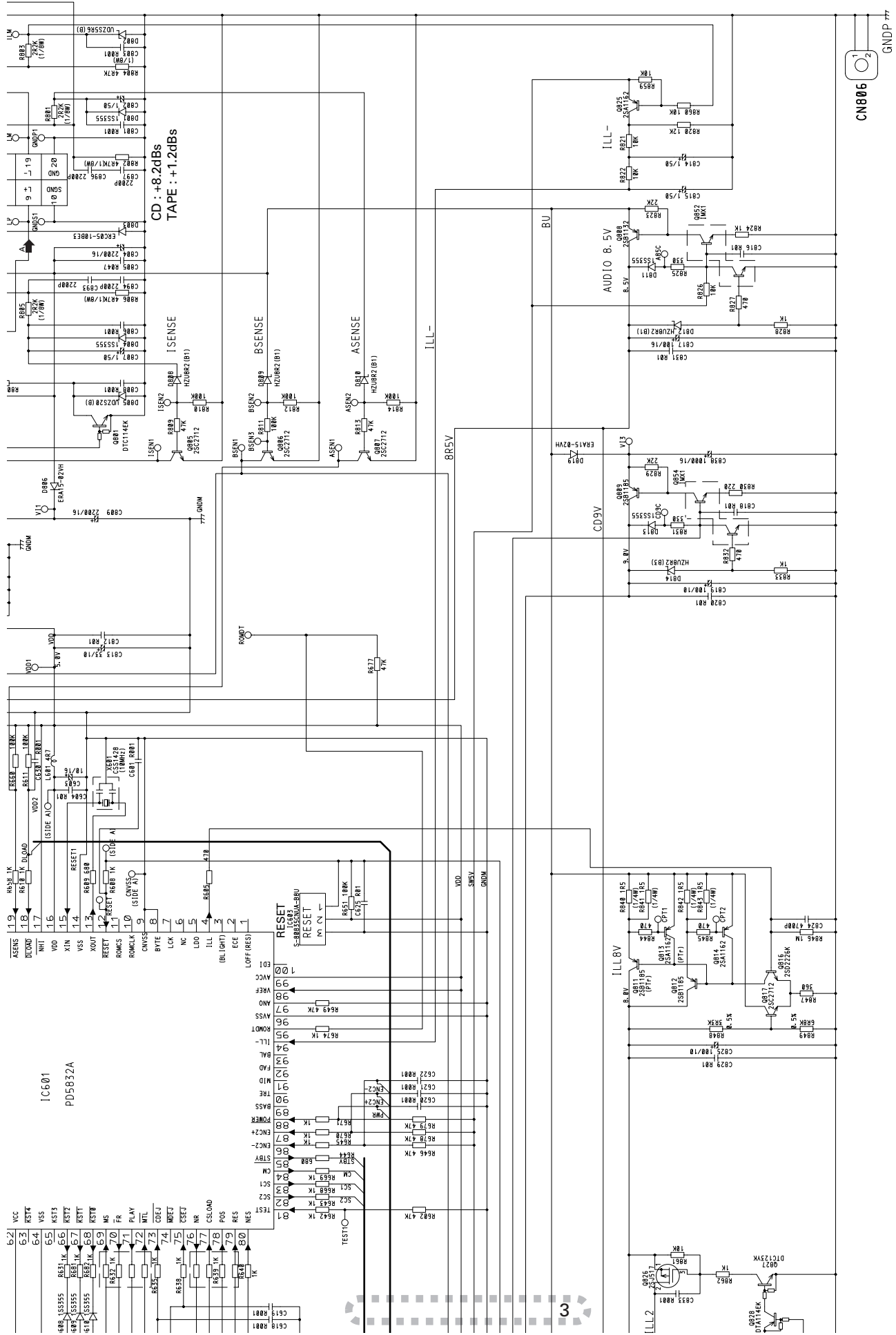


- Please note: If there is no response to CLICKING the link, please download this PDF first and then click on it.

CLICK HERE TO **DOWNLOAD** THE COMPLETE MANUAL

A

Mark No.	Description	Part No.	Mark No.	Description	Part No.
109	Screw(M2x2.2)	CBA1604	159	Screw(M2x1.9)	CBA1453
110	Screw(M2x2)	CBA1250	160	Washer	CBF1038
111	Screw(M2x3.8)	CBA1362	161	Load Arm R Assy(Service)	CXX1457
112	Screw(M2x2.4)	CBA1471	162	Washer	CBF1074
113	Washer	CBF1038	163	Spring	CBH2690
114	Spring	CBH2008	* 164	Arm	CNC7241
115	Spring	CBH2009	* 165	Arm	CXC1948
116	Spring	CBH2010	166	Holder	CBL1508
117	Spring	CBL1335	167	Belt	CNT1079
118	Roller	CLA3913	168	Holder	CNV5055
* 119	Bracket	CNC7228	169	Pulley	CNV5057
120	Guide Unit	CXB4417	170	Roller	CNV6209
121	Cover	CNC9504	171	Guide	CNV5125
122	Sheet	CNM6414	* 172	Bracket Unit	CXB5937
123	Sheet	CNM5378	173	Roller Gear Unit	CXB3176
124	Washer	CBE1053	* 174	Motor Unit(M2 LOAD)	CXC1388
125	Sheet	CNM5827	175	Screw	JFZ14P020FZK
126	PCB	CNP6164	176	Loading Arm R Assy	CXC1951
127	Ball	CNR1189	177	Screw(M2x1.9)	CBA1453
128	Bearing	CNR1423	178	Washer	CBF1074
129	Belt	CNT1079	179	Spring	CBH2690
130	Holder	CNV5037	* 180	Arm	CNC7242
131	Guide	CNV5040	* 181	Arm	CXC1949
132	Clamper	CNV5042	182	Screw	JFZ20P014FTC
133	Rack	CNV5111	183	Roller	CNV6209
134	Arm	CNV5579	184	Roller Gear Unit	CXB3176
135	Holder	CNV5759	185	Guide	CNV5126
136	Chassis Unit	CXB8450	186	Switch(S885 MAX)	CSN1052
137	Arm Unit	CXB2705	187	LED(D883)	CL205IRXTU
138	Motor Unit(M4 CARRIAGE)	CXC1389	188	Photo-transistor(Q881)	CPT230SCTD
139	Screw Unit	CXB3179	189	LED(D891,892)	CL205IRXTU
140	Lever Unit	CXB4450	190	Switch(S887 CLAMP)	CSN1051
141	Bracket	CNC8584	191	Switch(S886 ELV HOME)	CSN1052
142	Spacer	CNM6345	192	Bracket Unit	CXB6086
143	Motor(M5 SPINDLE)	CXM1279	193	Photo-transistor(Q851,852)	CPT230SCTD
144	Screw	JFZ14P020FZK	194	Resistor(R856)	RS1/8S911J
145	Washer	YE15FUC	195	Resistor(R857)	RS1/8S821J
146	Arm Unit	CXB6052	196	Photo-interrupter(Q1)	RPI-221
147	Arm Unit	CXB6053	197	Screw(M2x1.4)	CBA1687
148	Tray Assy	CXB7656	198	Pickup Unit(P8)(Service)	CXX1313
149	Spring	CBH2269	199	Spring	CBL1467
150	Sheet	CNM7109	200	Bracket	CNC8902
151	Cam Motor Assy	CXB7809	201	
152		202	Screw(M2x4)	CBA1015
* 153	Bracket Unit	CXB5201			
* 154	Motor Unit(M1 Cam Gear)	CXC1395			
* 155	Motor Unit(M3 ELV)	CXC1386			
156	Screw	JFZ20P025FTC			
157	Loading Arm L Assy	CXC1950			
158	Load Arm L Assy(Service)	CXX1469			



A-a A-b

A-b

3.7 CASSETTE MECHANISM MODULE

A

B

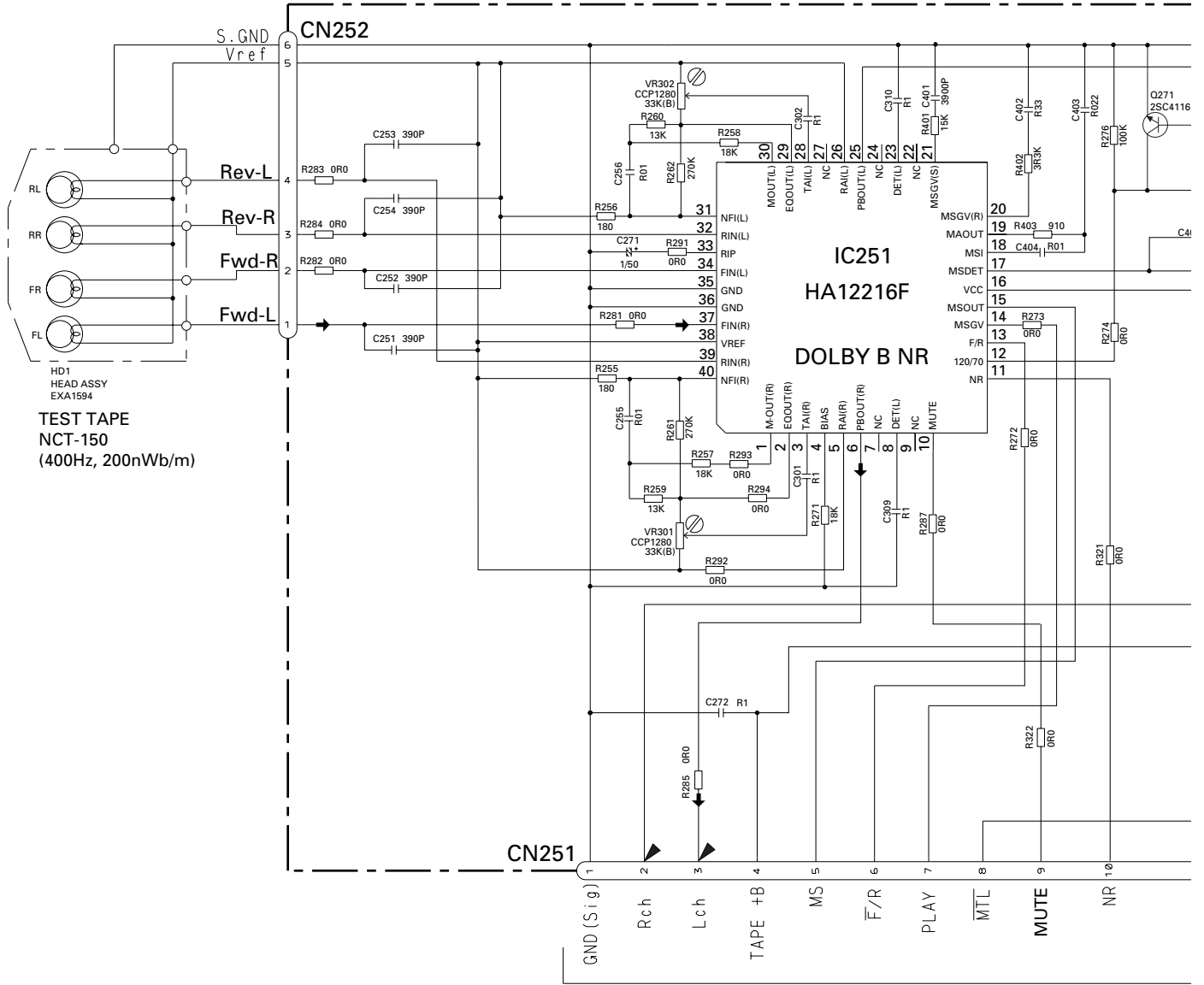
C

D

E

F

N DECK UNIT



-8.24dBs(300mV)±1dB

A CN301

G CD CORE UNIT(STS UNIT)

SIDE B

A

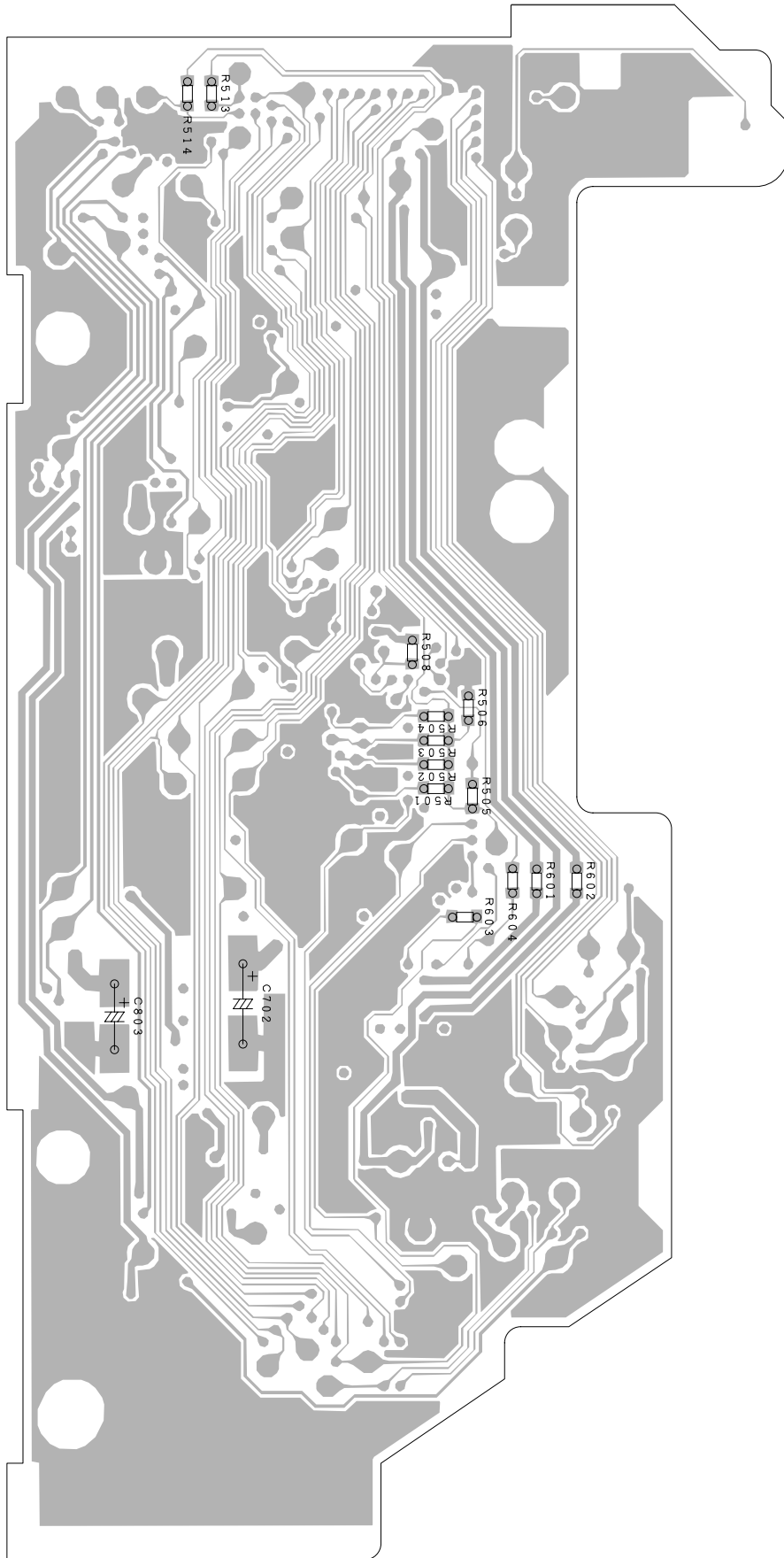
B

C

D

E

F



5. ELECTRICAL PARTS LIST

NOTES:

- Parts whose parts numbers are omitted are subject to being not supplied.
- The part numbers shown below indicate chip components.

Chip Resistor

RS1/OSOOOJ,RS1/OOSOOOJ

Chip Capacitor (except for CQS.....)

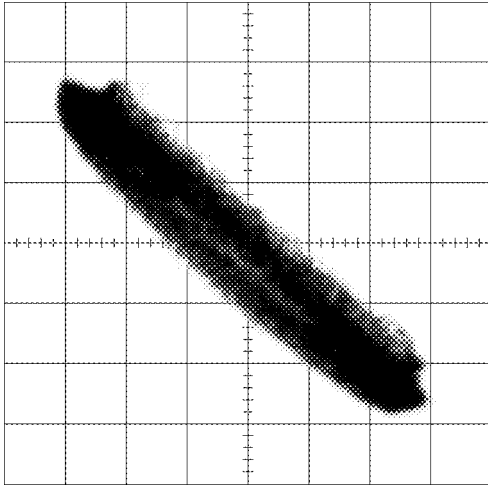
CKS....., CCS....., CSZS.....

====Circuit Symbol and No.====Part Name	Part No.	====Circuit Symbol and No.====Part Name	Part No.
A Unit Number : CWM8495		Q 840 Transistor	DTC123YK
Unit Name : Main Unit		Q 852 Transistor	IMX1
		Q 854 Transistor	IMX1
		D 301 Diode	UDZS20(B)
		D 302 Diode	UDZS20(B)
MISCELLANEOUS		D 303 Diode	UDZS20(B)
IC 301 IC	NJM2068MD	D 304 Diode	UDZS20(B)
IC 302 IC	NJM2068MD	D 305 Diode	HZU4LL(C)
IC 303 IC	NJM2068MD	D 601 Diode	1SS355
IC 305 IC	TC74HC4066AF	D 605 Diode	1SS355
IC 601 IC	PD5832A	D 608 Diode	1SS355
IC 602 IC	HA12187FP	D 609 Diode	1SS355
IC 603 IC	S-80835CNUA-B8U	D 610 Diode	1SS355
IC 701 IC	PD5716B	D 611 Diode	UDZS18(B)
IC 801 IC	S-812C56AUA-C3K	D 612 Diode	UDZS18(B)
Q 301 Transistor	DTC343TK	D 701 Diode	1SS355
Q 302 Transistor	DTC343TK	D 801 Diode	1SS355
Q 303 Transistor	DTC343TK	D 802 Diode	UDZS5R6(B)
Q 304 Transistor	DTC343TK	D 803 Diode	ERC05-10BE3
Q 305 Transistor	DTC343TK	D 804 Diode	1SS355
Q 306 Transistor	DTC343TK	D 805 Diode	UDZS20(B)
Q 307 Transistor	DTC343TK	D 806 Diode	ERA15-02VH
Q 308 Transistor	DTC343TK	D 808 Diode	HZU8R2(B1)
Q 309 Transistor	DTA114EK	D 809 Diode	HZU8R2(B1)
Q 601 Transistor	2SA1162	D 810 Diode	HZU8R2(B1)
Q 602 Transistor	DTA114EK	D 811 Diode	1SS355
Q 603 Transistor	DTA114EK	D 812 Diode	HZU8R2(B1)
Q 701 Transistor	DTA114EK	D 813 Diode	1SS355
Q 702 Transistor	DTA114EK	D 814 Diode	HZU8R2(B3)
Q 801 Transistor	DTC114EK	D 819 Diode	ERA15-02VH
Q 805 Transistor	2SC2712	D 823 Diode	UDZS16(B)
Q 806 Transistor	2SC2712	D 824 Diode	HZU8R2(B3)
Q 807 Transistor	2SC2712	L 601 Inductor	LCTC4R7K3216
Q 808 Transistor	2SB1132	L 701 Inductor	LCTC4R7K3216
Q 809 Transistor	2SB1185	L 801 Choke Coil 0.8mH	CTH1239
Q 811 Transistor	2SB1185	TH 701 Thermistor	CCX1037
Q 812 Transistor	2SB1185	X 601 Radiator 10.00MHz	CSS1428
Q 813 Transistor	2SA1162	X 701 Radiator 6.29MHz	CSS1621
Q 814 Transistor	2SA1162	FU 801 Fuse 5A	CEK1195
Q 816 Transistor	2SD2226K		
Q 817 Transistor	2SC2712		
Q 822 Transistor	2SB1132	RESISTORS	
Q 823 Transistor	DTC123YK	R 301	RS1/10S122J
Q 824 Transistor	DTA114EK	R 302	RS1/10S122J
Q 825 Transistor	2SA1162	R 303	RS1/10S473J
Q 826 FET	2SJ517	R 304	RS1/10S473J
Q 827 Transistor	DTC123YK	R 307	RS1/10S123J
Q 828 Transistor	DTA114EK	R 308	RS1/10S123J
Q 829 FET	2SJ517	R 309	RS1/10S183J
Q 830 Transistor	DTC123YK	R 310	RS1/10S183J
Q 833 Transistor	DTC114EK	R 311	RS1/10S223J
Q 834 Transistor	2SD1767	R 312	RS1/10S223J
Q 835 Transistor	2SA1576		
Q 836 Transistor	DTC144EK		
Q 837 Transistor	2SC4081		
Q 839 Transistor	2SB1132		

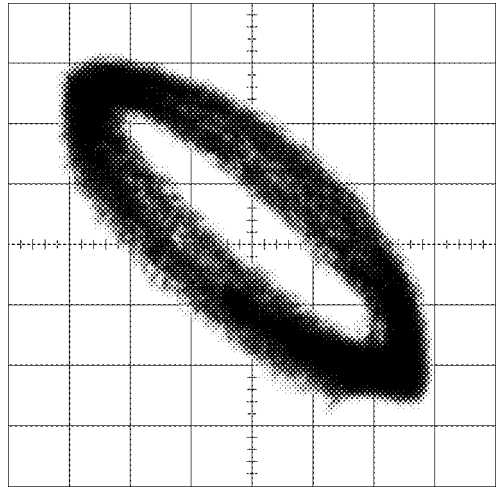
Grating waveform

Ech → Xch 20mV/div, AC
Fch → Ych 20mV/div, AC

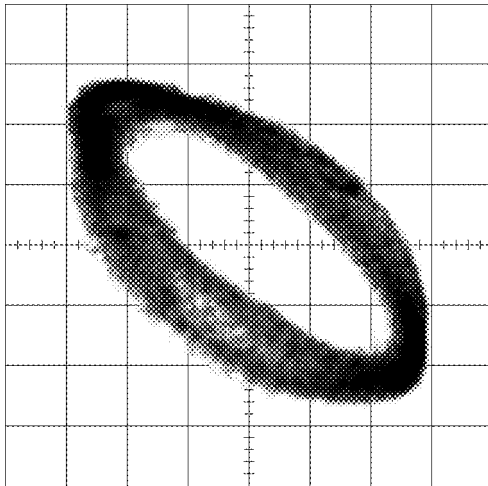
0°



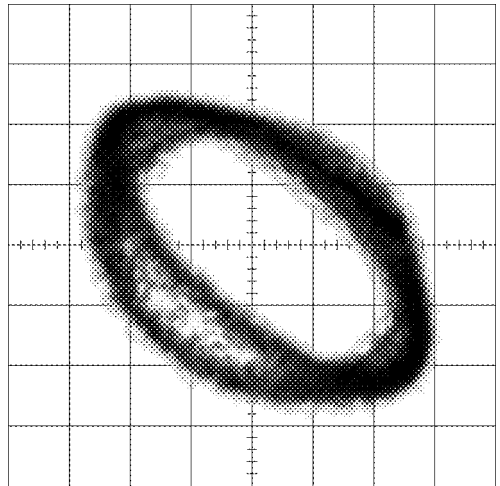
30°



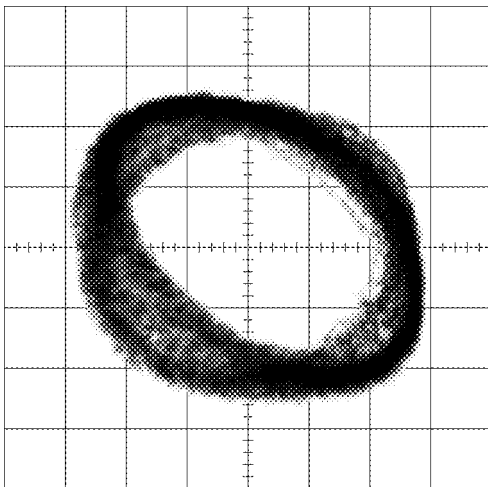
45°



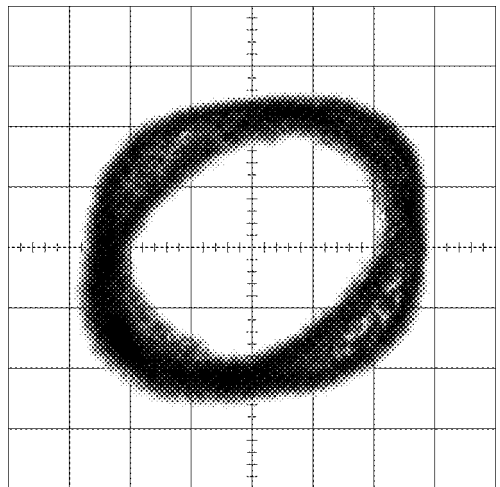
60°



75°



90°



A

B

C

D

E

F

7.2 IC

● Pin Functions (PD5832A)

Pin No.	Pin Name	I/O	Function and Operation
1	LOFF		Not used
2	ECE		Not used
3	BLIGHT		Not used
4	ILL	O	LAMP power supply control
5	LDO		Not used
6	NC		Not used
7	LCK		Not used
8	BYTE		VSS joint
9	CNVSS		VSS joint
10,11	NC		Not used
12	RESET	I	Reset input
13	XOUT	O	Crystal oscillating element connection pin
14	VSS		GND
15	XIN	I	Crystal oscillating element connection pin
16	VDD		Power supply
17	NHI		VDD joint
18	DLOAD	I	CD load key input
19	ASENS	I	ACC power sense input
20	BSSENS	I	Back up power sense input
21	RX2	I	IE-BUS data input
22	IPPW	O	IP-BUS driver power supply output
23	ILSENS	I	Illumination sense input
24	LCE1		Not used
25	VDSEL		Not used
26,27	NC		Not used
28	BLIGHT		Not used
29	RX1	I	IE-BUS data input
30	TX	O	IE-BUS data output
31	BSO	O	P-BUS serial data output
32	BSI	I	P-BUS serial data input
33	BSCK	O	P-BUS clock output
34	NC		Not used
35	BRXEN	I/O	P-BUS reception enable input/output
36	BRST	I	P-BUS reset input
37	BSRQ	O	P-BUS service request output
38,39	NC		Not used
40	LRST		Not used
41-43	NC		Not used
44	CDILL-AB	O	CD illumination output (Amber)
45	SWVDD	O	Display microcomputer power supply output
46	NC		Not used
47	SYSTEMUTE	O	System mute output
48	ANSW	O	Analog SW output
49	CDILL-GR	O	CD illumination output (Green)
50	TAPEMUTE	O	Tape mute output
51	MUTE	O	BUS mute output
52	ILLPOW	O	Illumination power supply output
53	DSSILL	O	DSS illumination output
54	TUNE	I	AUDIO mode key input
55	ENC1+	I	Encoder 1 (+) input
56	ENC1-	I	Encoder 1 (-) input
57	KD0	I	Key data input
58	KD1	I	Key data input
59	KD2	I	Key data input
60	KD3	I	Key data input
61	KST5	O	Key strobe output
62	VCC		Power supply

CLICK HERE TO **DOWNLOAD** THE COMPLETE MANUAL

- Thank you very much for reading the preview of the manual.
- You can download the complete manual from: www.heydownloads.com by clicking the link below



- Please note: If there is no response to CLICKING the link, please download this PDF first and then click on it.

CLICK HERE TO **DOWNLOAD** THE COMPLETE MANUAL