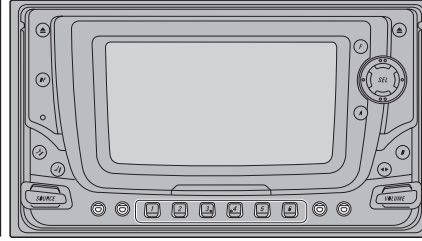


Service Manual

Pioneer

FH-P6600R/EW



ORDER NO.
CRT2502

MULTI-CD/MD CONTROL DSP HIGH POWER CD CASSETTE PLAYER WITH RDS TUNER

FH-P6600R EW

MULTI-CD/MD CONTROL DSP HIGH POWER CD CASSETTE PLAYER WITH FM/AM TUNER

FH-P6600 ES

- This service manual should be used together with the following manual(s):

Model No.	Order No.	Mech. Module	Remarks
CX-1011	CRT2406	3L	Cassette Mech. Module:Circuit Description, Mech.Description, Disassembly
CX-958	CRT2423	S8.1	CD Mech. Module:Circuit Description, Mech.Description, Disassembly

- **Dolby noise reduction manufactured under license from Dolby Laboratories Licensing Corporation.**
"Dolby" and the double-D symbol are trademarks of Dolby Laboratories Licensing Corporation.
- **Three-color LEDs:** The LCD backlight uses Hitachi's 3-color LEDs (NSCM315C) to control voltages for RGB reproduction. By individually controlling the voltages for red, green and blue LEDs, these three colors are mixed to reproduce ten colors.

CONTENTS

1. SAFETY INFORMATION	2	7. GENERAL INFORMATION	83
2. EXPLODED VIEWS AND PARTS LIST	3	7.1 DIAGNOSIS	83
3. BLOCK DIAGRAM AND SCHEMATIC DIAGRAM ...	16	7.1.1 TEST MODE	83
4. PCB CONNECTION DIAGRAM	42	7.1.2 DISASSEMBLY	87
5. ELECTRICAL PARTS LIST	60	7.1.3 PCB LOCATIONS	94
6. ADJUSTMENT	78	7.2 PARTS	95
		7.2.1 IC.....	95
		7.2.2 DISPLAY	106
		7.3 OPERATIONAL FLOW CHART	108
		8. OPERATIONS AND SPECIFICATIONS.....	109

PIONEER CORPORATION 4-1, Meguro 1-Chome, Meguro-ku, Tokyo 153-8654, Japan
PIONEER ELECTRONICS SERVICE INC. P.O.Box 1760, Long Beach, CA 90801-1760 U.S.A.
PIONEER ELECTRONIC N.V. Haven 1087 Keetberglaan 1, 9120 Melsele, Belgium
PIONEER ELECTRONICS ASIACENTRE PTE.LTD. 253 Alexandra Road, #04-01, Singapore 159936

CLICK HERE TO **DOWNLOAD** THE COMPLETE MANUAL

- Thank you very much for reading the preview of the manual.
- You can download the complete manual from: www.heydownloads.com by clicking the link below



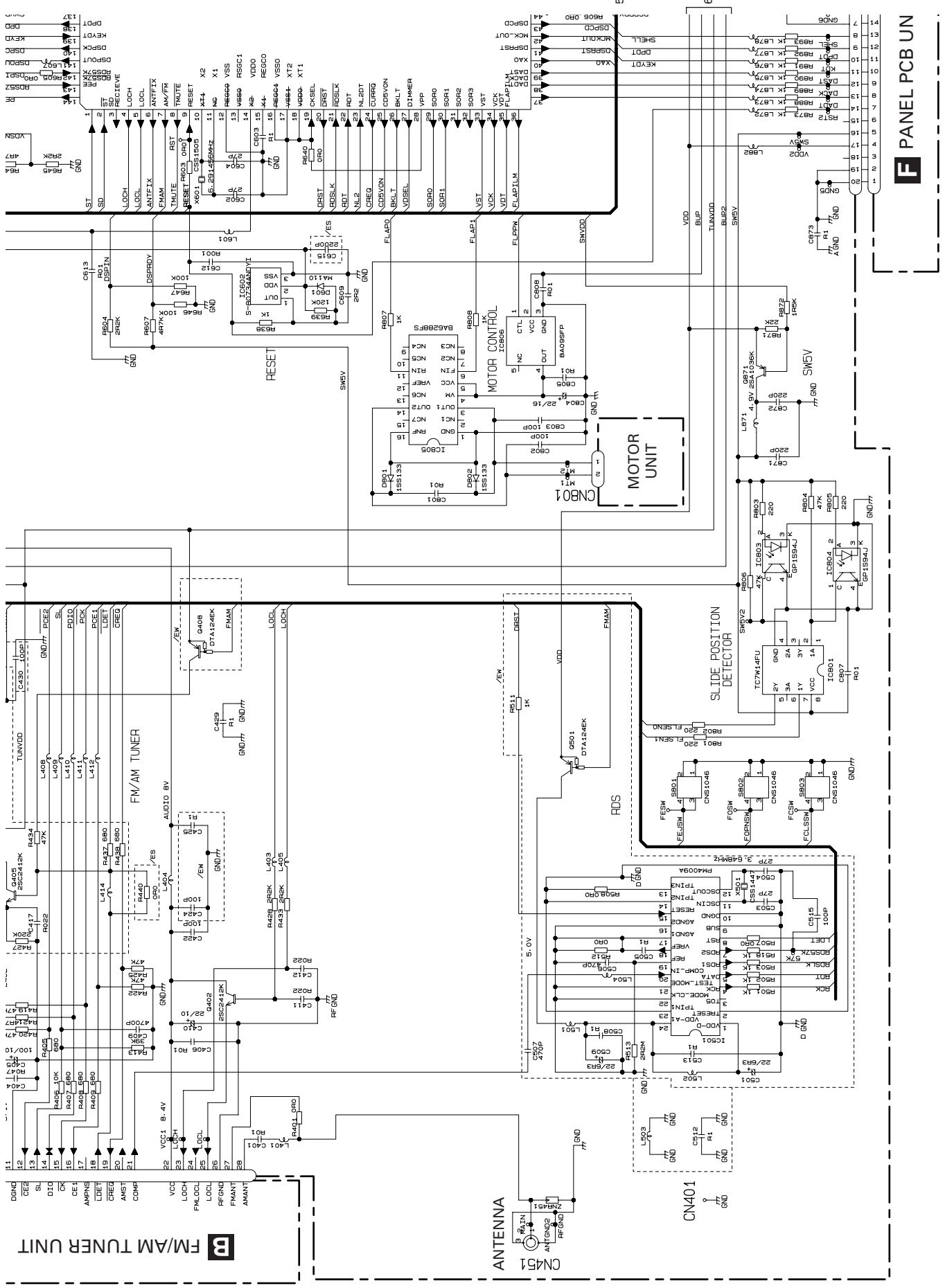
- Please note: If there is no response to CLICKING the link, please download this PDF first and then click on it.

CLICK HERE TO **DOWNLOAD** THE COMPLETE MANUAL

(2) CONTRAST TABLE

FH-P6600R/EW and FH-P6600/ES are constructed same except for the following:

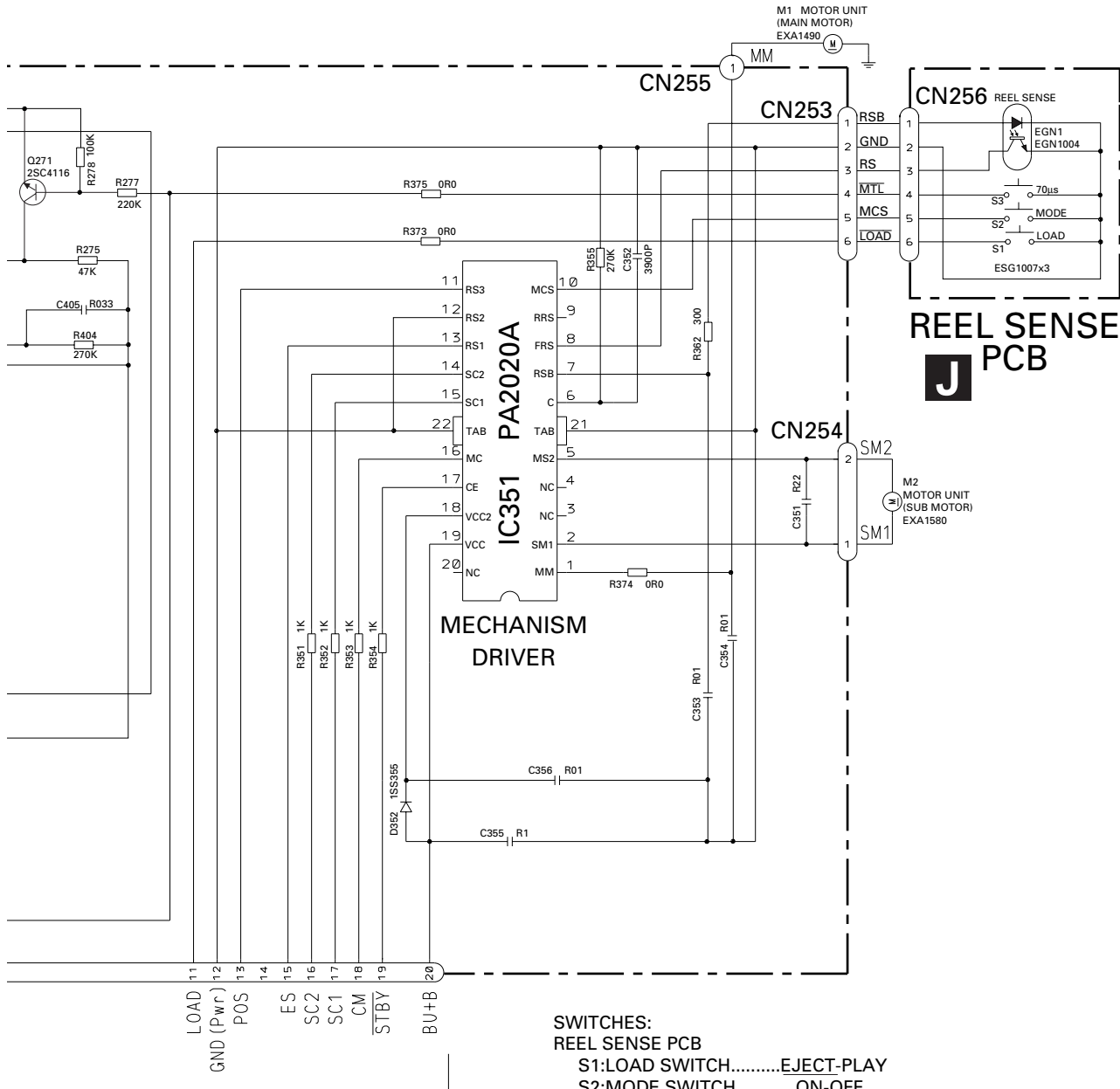
Mark No.	Symbol and Description	Part No.	
		FH-P6600R/EW	FH-P6600/ES
13	Cord Assy	CDE6404	Not used
14	Fuse(10A)	CEK1136	Not used
15	Cap	CKX-003	Not used
16	Cap	CNS1472	Not used
17	Resistor	RS1/2PMF102J	Not used
29	Audio Amp Unit	CWM7006	CWM7001
49	Insulator	CNM6034	Not used
50	FM/AM Tuner Unit	CWE1500	CWE1501
52	Power Supply Unit	CWM7007	CWM7002
95	Panel PCB Unit	CWM7008	CWM7003
118	Flap PCB Unit	CWM7009	CWM7004
131	Grille Unit	CXB6482	CXB6483
133	Remote Control Assy	CZX3218	Not used
134	Cover	CZN6410	Not used
135	Remote Control Assy	Not used	CXB3877
136	Battery Cover	Not used	CNS5032
137	Cord Assy	Not used	CDE6257
138	Cap	Not used	CNS1472
139	Resistor	Not used	RS1/2PMF102J
140	Fuse(10A)	Not used	CEK1136



F PANEL PCB UN

A-a A-b

A-a



SWITCHES:
 REEL SENSE PCB
 S1:LOAD SWITCH.....EJECT-PLAY
 S2:MODE SWITCH.....ON-OFF
 S3:70µs SWITCH.....ON-OFF
 The underlined indicates the switch position.



CLICK HERE TO **DOWNLOAD** THE COMPLETE MANUAL

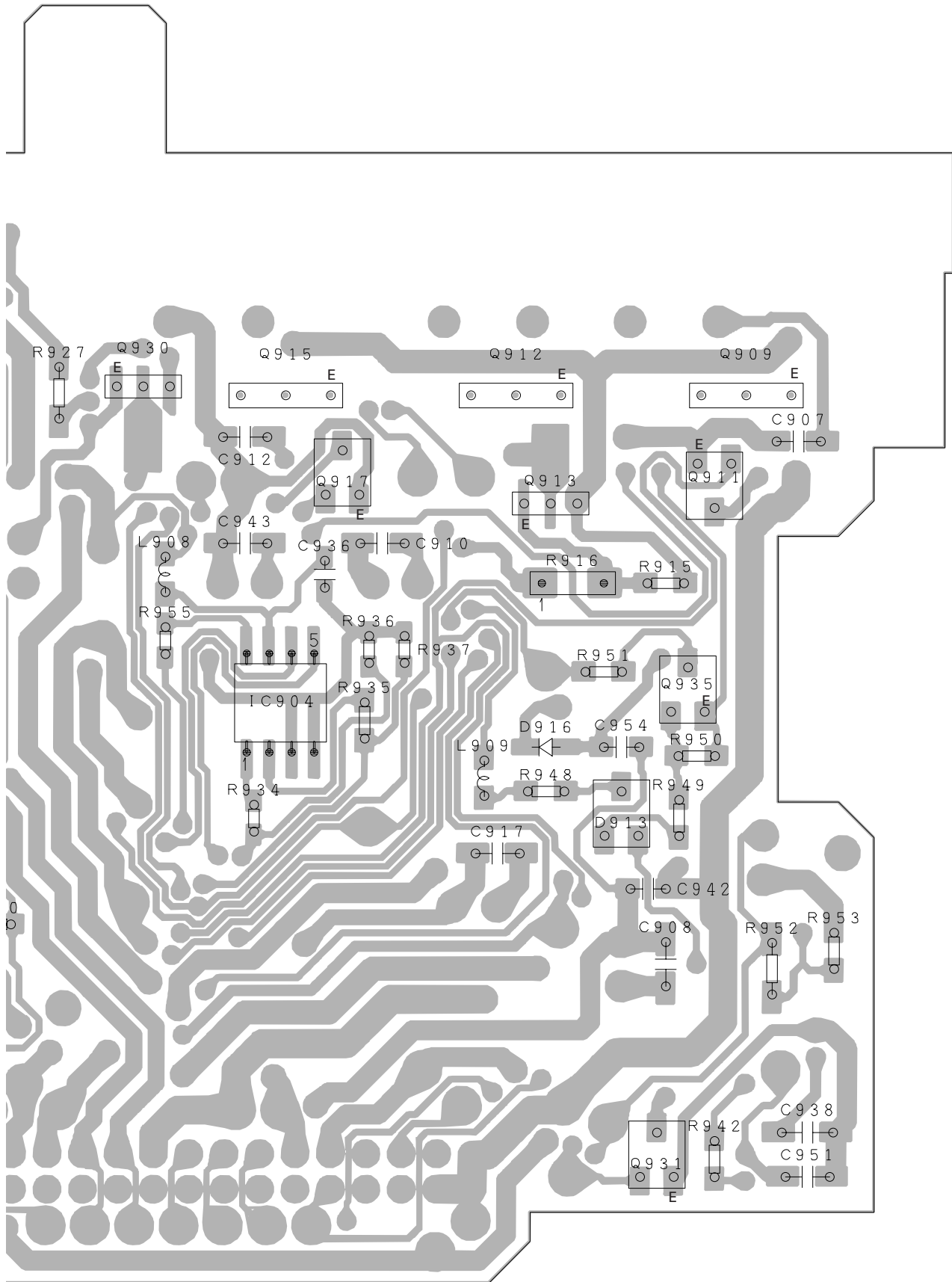
- Thank you very much for reading the preview of the manual.
- You can download the complete manual from: www.heydownloads.com by clicking the link below



- Please note: If there is no response to CLICKING the link, please download this PDF first and then click on it.

CLICK HERE TO **DOWNLOAD** THE COMPLETE MANUAL

SIDE B



A

B

C

D

====Circuit Symbol and No.====Part Name	Part No.	====Circuit Symbol and No.====Part Name	Part No.
C 10	CCSRCH220J50	C 221	CKSRYPB473K16
C 11	CCSRCH150J50	C 222	CKSQYB334K16
C 12	CCSRCH8R0D50	C 223	CKSQYB474K16
C 14	CCSRCJ3R0C50	C 224	CKSRYPB104K16
C 15	CKSRYPB103K50	C 225	CKSRYPB272K50
C 16	CKSRYPB222K50	C 226	CKSRYPB682K25
C 17	CKSRYPB222K50	C 902	CCSRCH270J50
C 18	CCSRCJ3R0C50	C 904	CKSRYPB223K25
C 19	CKSRYPB103K50	C 905	CKSRYPB103K50
C 20	CKSRYPB103K50	C 906	CCSRTH100D50
C 21	CKSRYPB103K50	C 907	CCSRTH150J50
C 24	CKSQYB334K16	C 909	CCSRTH100D50
C 31	CKSRYPB222K50	C 910	CKSRYPB332K50
C 32	CCSRCH470J50	C 912	CKSQYB474K16
C 35	CKSRYPB103K50	C 913	CKSRYPB223K25
C 51	CKSRYPB103K50	C 914	CKSRYPB682K25
C 52	CKSRYPB473K16	C 915	CKSQYB223K25
C 53	CCSRCK2R0C50	C 916	CKSQYB474K16
C 54	CKSRYPB103K50	C 917	CKSYB475K10
C 55	CKSRYPB104K16	C 918	CKSRYPB223K25
C 56	CKSRYPB104K16	C 919	CKSQYB225K10
C 58	CKSQYB224K16	C 920	CCSRCH270J50
C 59	CKSRYPB223K25	C 921	CCSRCH270J50
C 60	CKSRYPB104K16	C 922	CKSYB105K16
C 101	CEALNP100M10	C 923	CKSRYPB103K50
C 102	CCSRCH151J50	B Unit Number : CWE1501(FH-P6600/ES)	
C 103	CKSRYPB473K16	Unit Name : FM/AM Tuner Unit	
C 105	CKSRYPB682K25	MISCELLANEOUS	
C 106	CEAL2R2M50	IC 1	IC PML002A
C 107	CKSRYPB103K50	IC 2	IC PM4008A
C 108	CKSQYB474K16	IC 3	IC BR9010FV
C 109	CKSQYB474K16	Q 1	Transistor 2SC4081
C 110	CKSRYPB104K16	Q 2	Transistor DTC124EU
C 111	CKSRYPB104K16	Q 3	FET 3SK263
C 112	CKSRYPB104K16	Q 51	Transistor 2SC4081
C 113	CKSRYPB123K25	Q 201	FET 2SK932
C 114	CEAL220M6R3	Q 202	Transistor DTC124EU
C 115	CKSRYPB473K16	Q 204	Transistor 2SC4081
C 116	CEAL2R2M50	D 1	Diode KV1410(23)
C 117	CKSRYPB102K50	D 2	Diode 1SV248
C 120	CKSRYPB153K25	D 6	Diode KV1410(23)
C 121	CKSRYPB332K50	D 201	Diode DAN217U
C 122	CKSRYPB682K25	D 202	Diode MA147
C 123	CKSRYPB681K50	D 903	Diode KV1410(23)
C 125	CKSRYPB103K50	D 904	Diode SVC253
C 126	CKSRYPB103K50	L 1	Coil CTC1155
C 127	CEAL2R2M50	L 3	Inductor LCTB1R5K2125
C 128	CKSRYPB103K50	L 4	Coil CTC1155
C 201	CCSRCH471J50	L 201	Inductor LCTB330K1608
C 202	CCSRCH100D50	L 202	Inductor LFEA102J
C 203	CKSRYPB104K16	L 203	Inductor LCTA121J3225
C 204	CKSRYPB332K50	L 901	Coil CTC1154
C 205	CKSRYPB103K50	L 902	Inductor LCTA3R3J3225
C 206	CKSRYPB104K16	L 904	Inductor LCTBR47K1608
C 207	CKSRYPB473K16	L 905	Inductor LCTBR47K1608
C 208	CCSRCH560J50	T 51	Coil CTE1132
C 209	CEAL470M6R3	CF 51	Ceramic Filter CTF1442
C 210	CKSRYPB103K50	CF 52	Ceramic Filter CTF1442
C 211	CKSRYPB103K50	CF 53	Ceramic Filter CTF1442
C 212	CCSRCH101J50	CF 202	Ceramic Filter CTF1476
C 215	CKSRYPB223K25	X 901	Crystal Resonator 10.250MHz CSS1432
C 216	CKSQYB334K16		
C 217	CKSRYPB103K50		
C 219	CKSQYB105K10		
C 220	CKSRYPB104K16		

====Circuit Symbol and No.====Part Name	Part No.	====Circuit Symbol and No.====Part Name	Part No.
C 614	CKSRYP104K16	D 920	Diode 1SS355
C 615	CKSRYP222K50	L 901	Inductor CTF1420
C 801	CKSRYP103K25	L 902	Inductor CTF1420
C 802	CCSRCH101J50	L 903	Inductor CTF1420
C 803	CCSRCH101J50	L 904	Inductor CTF1420
C 804	CEJA220M16	L 905	Inductor CTF1420
C 805	CKSQYB103K25	L 907	Chip-Inductor LCTA2R2J3225
C 807	CKSRYP103K25	L 908	Inductor LCTB2R2K2125
C 808	CCSRCH101J50	L 909	Inductor LCTB2R2K2125
C 851	1000µF/16V CCH1234	L 910	Inductor LCTA101J3225
C 852	CKSQYB473K50	BZ 901	Buzzer CPV1012
C 853	CKSRYP104K16	RESISTORS	
C 854	CKSQYB104K50	R 901	RS1/10S821J
C 855	CKSQYB104K16	R 902	RS1/10S821J
C 856	CKSQYB104K16	R 903	RS1/10S821J
C 857	CKSQYB104K16	R 904	RS1/10S821J
C 858	CKSRYP104K16	R 909	RS1/10S103J
C 861	CKSRYP104K16	R 910	RS1/10S103J
C 871	CCSQCH221J50	R 911	RS1/10S103J
C 872	CCSQCH221J50	R 912	RS1/10S103J
C 873	CKSRYP104K16	R 914	RS1/8S751J
C 874	CKSRYP104K16	R 915	RS1/10S222J
Unit Number : CWM7007(FH-P6600R/EW)		R 916	RS1/4S122J
Unit Name : CWM7002(FH-P6600/ES)		R 917	RS1/4S361J
Unit Name : Power Supply Unit		R 919	RS1/10S103J
MISCELLANEOUS		R 920	RS1/8S122J
IC 902	IC S-81250SGUP	R 921	RS1/10S102J
IC 903	IC BA033T	R 922	RS1/8S181J
IC 904	IC CA0008AM	R 923	RS1/4S122J
IC 905	IC TA2050F	R 924	RS1/10S561J
IC 906	IC(FH-P6600/ES) TPD1018F	R 928	RS1/10S102J
IC 907	IC PQ20RX1S-L	R 929	RS1/10S223J
Q 912	Transistor 2SD2396	R 930	RS1/10S181J
Q 913	Transistor 2SA1797	R 931	RS1/10S102J
Q 914	Transistor DTC114EK	R 932	RS1/10S223J
Q 915	Transistor 2SD2396	R 933	RS1/10S181J
Q 916	Transistor DTA114EK	R 934	RS1/16S102J
Q 917	Transistor DTC114EK	R 935	RS1/10S102J
Q 921	Transistor 2SD2396	R 936	RS1/16S473J
Q 922	Transistor DTA114EK	R 937	RS1/16S473J
Q 923	Transistor DTC124EK	R 938	RS1/10S682J
Q 925	Transistor DTC114EK	R 939	RS1/10S332J
Q 926	Transistor 2SB1132	R 940	RS1/10S102J
Q 927	Transistor DTA114EK	R 941	RS1/10S102J
Q 931	Transistor DTC114EK	R 942	RS1/10S102J
Q 932	Transistor 2SA1037K	R 948	RS1/10S183J
Q 933	Transistor DTC114EU	R 949	RS1/10S472J
Q 935	Transistor 2SA1162	R 950	RS1/10S472J
Q 936	Transistor 2SC2412K	R 951	RS1/10S102J
Q 937	Transistor FMG12	R 952	RS1/8S103J
Q 938	Transistor FMG12	R 953	RS1/10S223J
D 902	Diode HZS9L(C1)	R 955	RS1/16S103J
D 903	Diode HZS9L(B1)	R 956	RS1/10S0R0J
D 905	Diode ERA15-02VH	R 959	RS1/10S362J
D 906	Diode HZS6L(C3)	R 960	RS1/10S202J
D 908	Diode HZS16L(1)	R 961	RS1/10S0R0J
D 913	Diode MA152WK	CAPACITORS	
D 915	Diode 1SS355	C 903	CKSQYB102K50
D 917	Diode 1SS355	C 904	CKSQYB102K50
D 918	Diode 1SS355	C 905	CKSQYB102K50
D 919	Diode 1SS355	C 906	CKSQYB102K50
		C 910	CKSQYB103K25

6.3 CHECKING THE GRATING AFTER CHANGING THE PICKUP UNIT

• Note :

The grating angle of the PU unit cannot be adjusted after the PU unit is changed. The PU unit in the CD mechanism module is adjusted on the production line to match the CD mechanism module and is thus the best adjusted PU unit for the CD mechanism module. Changing the PU unit is thus best considered as a last resort. However, if the PU unit must be changed, the grating should be checked using the procedure below.

• Purpose :

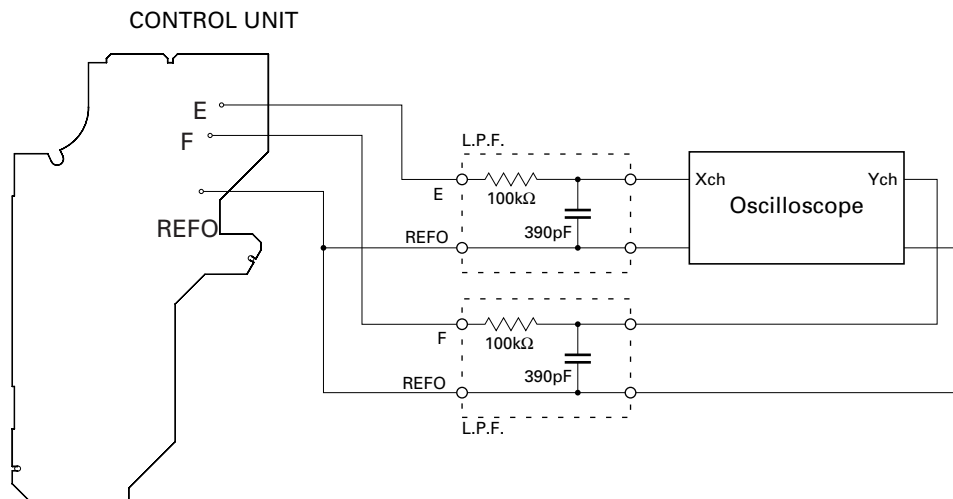
To check that the grating is within an acceptable range when the PU unit is changed.

• Symptoms of Mal-adjustment :

If the grating is off by a large amount symptoms such as being unable to close tracking, being unable to perform track search operations, or taking a long time for track searching.

• Method :

- | | |
|-----------------------|----------------------------|
| • Measuring Equipment | • Oscilloscope, Two L.P.F. |
| • Measuring Points | • E, F, REFO |
| • Disc | • ABEX TCD-784 |
| • Mode | • TEST MODE |



• Checking Procedure

1. In test mode, load the disc and switch the 5V regulator on.
2. Using the ► and ◀ buttons, move the PU unit to the innermost track.
3. Press key 3 to close focus, the display should read "91". Press key 2 to implement the tracking balance adjustment the display should now read "81". Press key 3 2 times. The display will change, returning to "81" on the fourth press.
4. As shown in the diagram above, monitor the LPF outputs using the oscilloscope and check that the phase difference is within 75° . Refer to the photographs supplied to determine the phase angle.
5. If the phase difference is determined to be greater than 75° try changing the PU unit to see if there is any improvement. If, after trying this a number of times, the grating angle does not become less than 75° then the mechanism should be judged to be at fault.

• Note

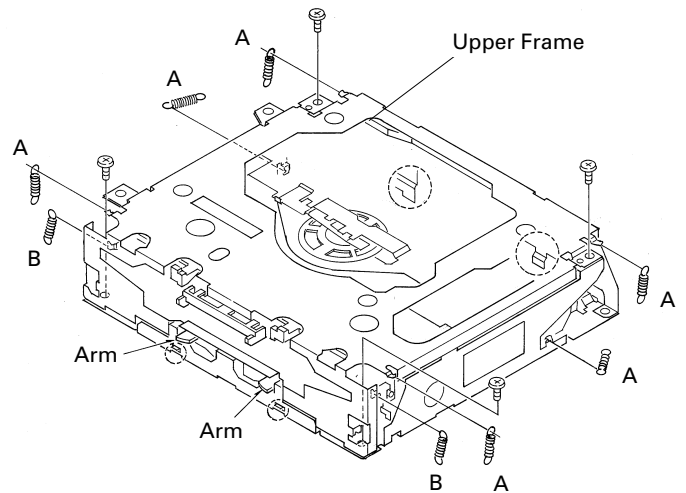
Because of eccentricity in the disc and a slight misalignment of the clamping center the grating waveform may be seen to "wobble" (the phase difference changes as the disc rotates). The angle specified above indicates the average angle.

• Hint

Reloading the disc changes the clamp position and may decrease the "wobble".

● Removing the Upper Frame

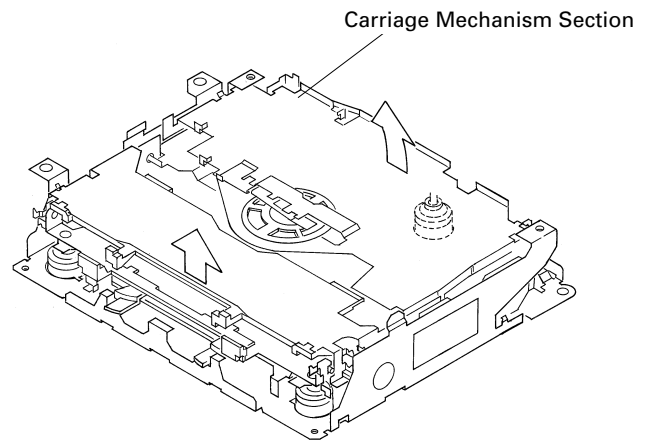
1. Remove six Springs A, two Springs B and four Screws.
2. Remove two Tabs situated on rear side of the Upper Frame, remove two Arms on the front side, then remove two Tabs on the front side.



● Removing the Carriage Mechanism Section

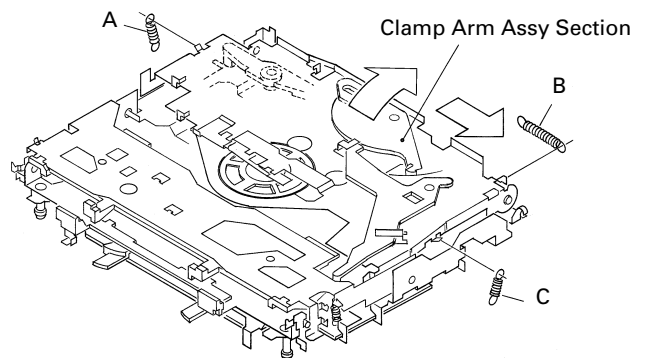
1. Disengage the Carriage Mechanism Section from the two dampers situated in the front side by driving it up, then disengage and remove the mechanism from the one damper by driving it up aslant into front side direction.

Note : When assembling the Carriage Mechanism Section, coat the dampers with alcohol prior to the assembly.



● Removing the Clamp Arm Assy Section

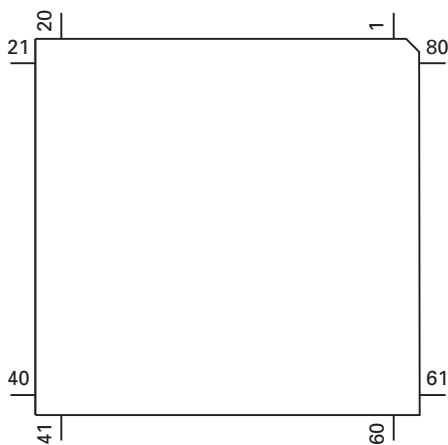
1. Remove a Spring A, a B and a Spring C.
2. Drive the Clamp Arm Assy Section up into rear side direction, then disengage the arm from its current position. Finally, drive the assembly approximately 45 degrees upward, then slide the assembly toward right side to remove it.



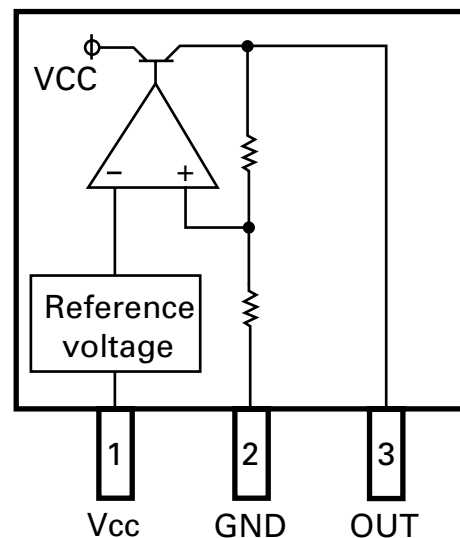
● Pin Functions (PE5149A)

Pin No.	Pin Name	I/O	Format	Function and Operation
1	AVSW	O		AV switch output
2,3	NC			Not used
4	AVSS	I		A/D GND
5,6	NC			Not used
7	AVREF	I		A/D converter reference voltage
8	DISPDIN	I		Display data input
9	KEYDOUT	O	C	Key data output
10-15	NC			Not used
16	TESTDIN	I		Test data input
17	TESTDOUT	O	C	Test data output
18	TESTCLK			Test data clock
19-26	SD0-7	I/O	C	Display driver command/Data input/output
27-32	NC			Not used
33	GND			GND
34-39	NC			Not used
40	\overline{RD}	O	C	Read strobe
41	\overline{WR}	O	C	Write strobe
42,43	NC			Not used
44	LCDCTRL	O	C	Display driver control
45	LCDRESET	O	C	Display driver reset control
46-49	NC			Not used
50	$\overline{EJECTCD}$	I		CD eject key input
51	$\overline{EJECTMDCC}$	I		MD/CC eject key input
52-59	NC			Not used
60	\overline{RESET}	I		Reset input
61	\overline{REMIN}	I		Key cord signal input
62	TESTIN	I		Test program mode input
63	\overline{CE}			Devise select input
64-67	NC			Not used
68	VDD			Power supply
69	X2			Crystal oscillator connection pin
70	X1			Crystal oscillator connection pin
71-73	NC			Not used
74	AVDD			Positive power supply terminal for analog circuit
75	AVREF0			GND
76-80	KD0-4	I		Key data input

*PE5149A



BA033T



CLICK HERE TO **DOWNLOAD** THE COMPLETE MANUAL

- Thank you very much for reading the preview of the manual.
- You can download the complete manual from: www.heydownloads.com by clicking the link below



- Please note: If there is no response to CLICKING the link, please download this PDF first and then click on it.

CLICK HERE TO **DOWNLOAD** THE COMPLETE MANUAL