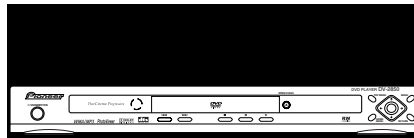


Service Manual



DV-2850-S

ORDER NO.
RRV3123

DVD PLAYER

DV-2850-S

THIS MANUAL IS APPLICABLE TO THE FOLLOWING MODEL(S) AND TYPE(S).

Model	Type	Power Requirement	Region No.	Remarks
DV-2850-S	WYXTL	AC220-240V	2	
DV-2850-S	WVXTL	AC220-240V	2	



For details, refer to "Important Check Points for Good Servicing" .

CLICK HERE TO **DOWNLOAD** THE COMPLETE MANUAL

- Thank you very much for reading the preview of the manual.
- You can download the complete manual from: www.heydownloads.com by clicking the link below



- Please note: If there is no response to CLICKING the link, please download this PDF first and then click on it.

CLICK HERE TO **DOWNLOAD** THE COMPLETE MANUAL

5 6 7 8

05 DVD MECHA SECTION parts List

<u>Mark No.</u>	<u>Description</u>	<u>Part No.</u>
1	Loading Motor PCB Assy	A2F101A610
2	Gear,Middle	92P100117A
⚠ 3	Loading Motor	1515S98004
4	Pulley,Motor	92P100097A
⚠ 5	FEED Motor	1515S98004
6	Cord Jumper (24P)(CD2001)	122H002305
7	Cord Jumper (CD2302)	122H051602
8	Insulator (F)	92P200013A
9	Belt,Loading	92P200015A
10	Insulator (R)	92P200016A
11	Frame,main	92P100119A
12	Tray (B)	92P100127A
13	Holder ,Traverse	92P100125A
14	Gear,Pulley	92P100123A
15	Gear,Main	92P100124A
16	Gear,Feed	92P100116A
17	SW PCB Assy (PCB640)	A2F101A640
18	Plate,Clamper	92P000023A
19	Loader SUB Assy	92AAA0019A
20	Clamper	92P100122A
21	Screw,Pan (M1.7x3 P3)	814011730U
22	Screw,Pan (M1.7x2.3 P3)	814011723U
23	Rack,Loading	92P100121A
24	Gear,Motor	92P100088A
25	Feed Rack Assy	92AAA0017A
26	Screw,T-Tite(B) (M1.7x5.0 P3)	813381750U
27	Screw,Gear Feed	92P700007A
28	Cord Jumper (CD2301)	122H061605
29	Switch (SW1)	0515S32003
30	Push Switch (SW2)	0500101036
31	Screw, Tap Tite(P) (2.6x8)	811022680U
32	Sems. Tap Tite(P) (2x8)	816112080U
33	Screw (Bind 2x8)	811022080U
⚠ 34	DVD MECHA ASSY	A2F101A650
NSP 35	Traverse SUB ASSY	92AAA0016A

A

B

C

D

E

F

(RF) →

(RF) →

(A) →
(B) →
(C) →
(D) →
(E) →
(F) →

A

A

17

15

16

18

A

A
B
C
D
E
F

(R) →
 (G) →
 (B) →
 →

A

B

→

→

C

(B) →

(G) →

(G) →

(G) →

(B) →

(B) →

(R) →

(R) →

(R) →

8

→

→

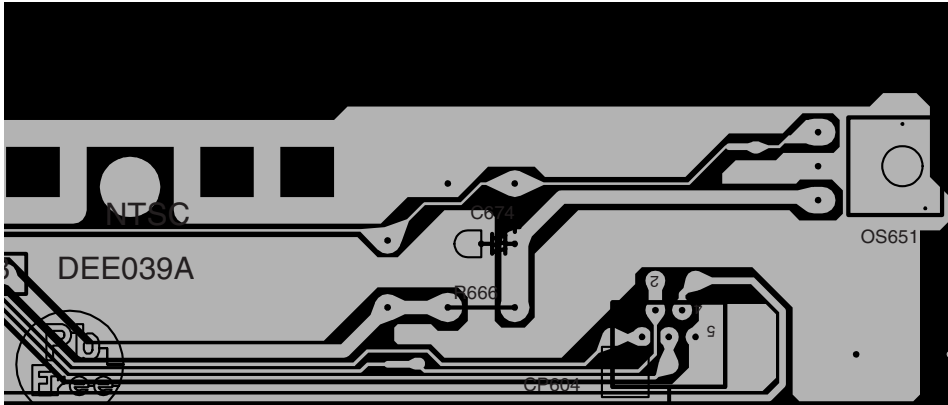
→

D

E

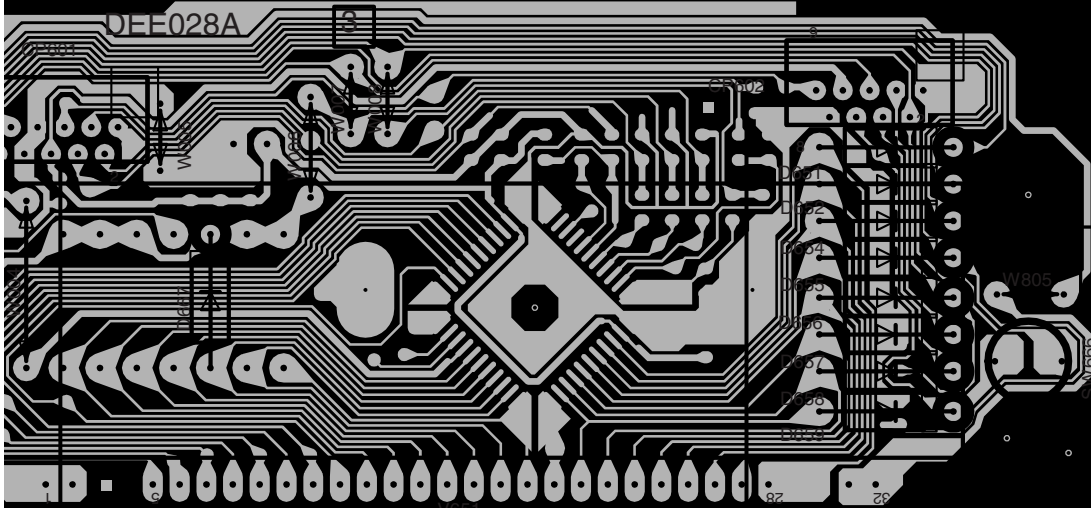
F

F



CP604

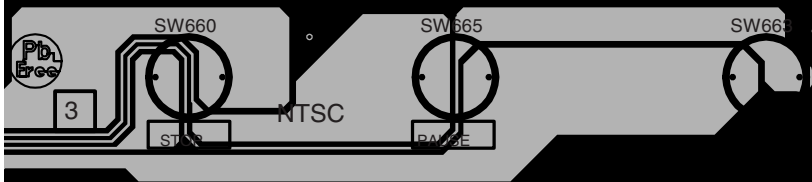
C



CP601

CP602

G



B C G

Mark No.	Description	Part No.
R528	RC 22K OHM 1/4W	R002T4223J
R529	R,METAL OXIDE 220 OHM 1W	R3X181221J
R530	RC 560 OHM 1/4W	R002T4561J
R531	RC 10K OHM 1/16W	R803R9103J
R534	RC 100 OHM 1/4W	R002T4101J
R536	RC 10K OHM 1/16W	R803R9103J
R537	RC 1K OHM 1/16W	R803R9102J
R538	RC 22K OHM 1/16W	R803R9223J
R539	RC 4.7K OHM 1/4W	R002T4472J
R540	RC 680 OHM 1/4W	R002T4681J
R541	RC 5.6K OHM 1/16W	R803R9562F
R542	R,METAL 1K OHM 1/6W	R4X5T6102F
R543	RC 4.7K OHM 1/16W	R803R9472F
R544	RC 10K OHM 1/16W	R803R9103J
R545	RC 22K OHM 1/16W	R803R9223F
R546	R,METAL 3.3K OHM 1/6W	R4X5T6332F
R547	RC 22 OHM 1/16W	R803R9220J
R8101	RC 4.7K OHM 1/4W	R002T4472J
R8102	RC 56K OHM 1/16W	R803R9563J
R8103	RC 470 OHM 1/4W	R002T4471J
R8104	RC 6.8K OHM 1/16W	R803R9682J
R8105	RC 390 OHM 1/4W	R002T4391J
R8108	RC 8.2K OHM 1/16W	R803R9822J
R8109	RC 68 OHM 1/16W	R803R9680F
R8110	RC 75 OHM 1/16W	R803R9750F
R8111	RC 75 OHM 1/16W	R803R9750F
R8112	RC 75 OHM 1/16W	R803R9750F
R8113	RC 75 OHM 1/16W	R803R9750F
R8114	RC 220 OHM 1/16W	R803R9221F
R8115	RC 220 OHM 1/16W	R803R9221F
R8120	RC 1 OHM 1/4W	R002T4010J

OTHERS

F501	FUSE 50T016H	080NT1R604
CD8001	CORD JUMPER	122H0C3001
CP502	CORD CONNECTOR	06C32E3504
CP503	CONNECTOR PCB SIDE	069J7C0599
FH501	HOLDER,FUSE	06710T0009
FH502	HOLDER,FUSE	06710T0009
J501	SOCKET,AC	064A6A0001
J8101	SOCKET,21PIN	063D100050
W24001	JUMPER IN PCB	1230T07501
W24002	JUMPER IN PCB	1230T10001
W24003	JUMPER IN PCB	1230T05001
W24004	JUMPER IN PCB	1230T12501
W24005	JUMPER IN PCB	1230T05001
W24006	JUMPER IN PCB	1230T05001
W24007	JUMPER IN PCB	1230T15001
W24008	JUMPER IN PCB	1230T12501
W24010	JUMPER IN PCB	1230T10001
W24011	JUMPER IN PCB	1230T07501
W24012	JUMPER IN PCB	1230T05001
W24013	JUMPER IN PCB	1230T05001
W24015	JUMPER IN PCB	1230T05001
W24016	JUMPER IN PCB	1230T05001
W24017	JUMPER IN PCB	1230T10001
W24018	JUMPER IN PCB	1230T05001
W24019	JUMPER IN PCB	1230T05001
W24021	JUMPER IN PCB	1230T15001
W24023	JUMPER IN PCB	1230T07501

Mark No.	Description	Part No.
W24024	JUMPER IN PCB	1230T10001
W24025	JUMPER IN PCB	1230T07501
W24026	JUMPER IN PCB	1230T05001
W24027	JUMPER IN PCB	1230T05001
W24029	JUMPER IN PCB	1230T05001
W24030	JUMPER IN PCB	1230T05001
W24031	JUMPER IN PCB	1230T05001
W24032	JUMPER IN PCB	1230T05001
W24035	JUMPER IN PCB	1230T05001
W24036	JUMPER IN PCB	1230T05001
W24811	JUMPER IN PCB	1230T05001
W24814	JUMPER IN PCB	1230T05001
W24815	JUMPER IN PCB	1230T12501
W24817	JUMPER IN PCB	1230T12501
W24821	JUMPER IN PCB	1230T12501
PCB240	PCB DPE004A	13DPE004AW

G OPERATION 3 PCB ASSY SWITCHES AND RELAYS

OS651	REMOTE RECEIVER	077A040001
SW667	SWITCH TACT	0504R01T38

CAPACITORS

C674	KA 47 UF 6.3V	E02LU0470M
C651	CC 0.1 UF 25V B	CS0PB0315K

RESISTORS

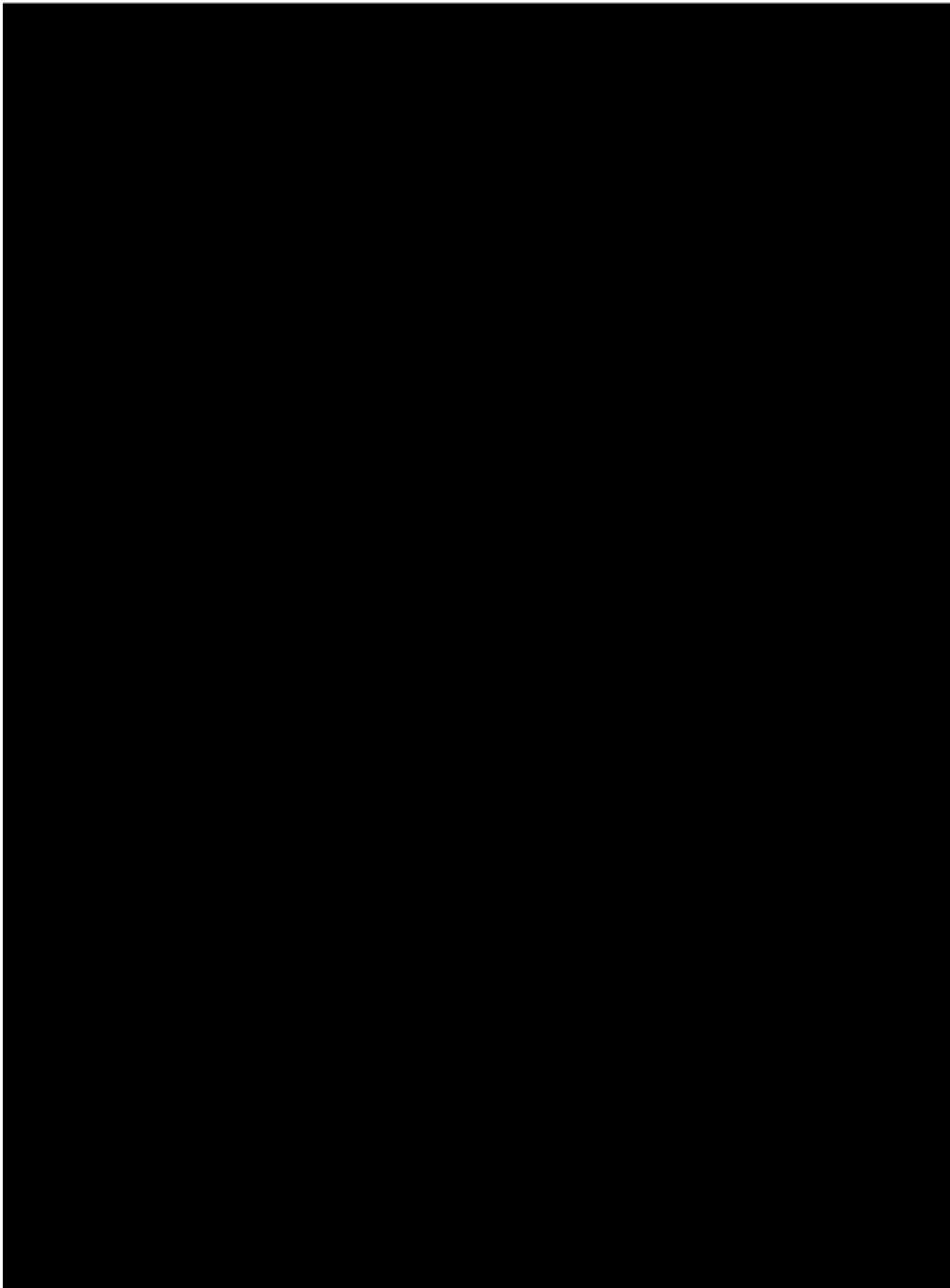
R666	RC 2.2K OHM 1/4W	R002T4222J
------	------------------	------------

OTHERS

CP603	CONNECTOR PCB SIDE	069EV93050
CP604	CONNECTOR PCB SIDE	069EV53050
PCB280	PCB DEE038A	13DEE038AW

7.1.7 TROUBLE SHOOTING

No.	Symptoms	Diagnosis Contents	Possible Defective Points
1	The power is not turned on.	Check the voltage of AT+3.3V, -28V and FLDC on the POWER SUPPLY Unit.	POWER PCB ASSY
		Are wires of output connector (POWER PCB ASSY) and CP4003 (DVDM Assy) disconnected or damaged ?	Connector / cable
		Check that the voltage at IC651-pin 10 (K 1) on the FLKY Assy becomes about 2.7V when the POWER key is pressed and 0 V when it is released.	OPERATION 2 Assy Tact SW (when operation of only the POWER key on the main unit is not accepted)
		Check that the voltage at OS651-pin 1 (IR) on the OPERATION1 Assy is in the range between 0 and 3.3 V while receiving signals from the remote control unit when any key on it is pressed.	FLKY Assy Remote receiver section (when operation of only the POWER key on the remote control unit is not accepted)
2	An opening screen is not displayed on the monitor (The FL display lights. The mechanism does not work.)	<ul style="list-style-type: none"> • Check the voltage of E+6.8V and SW+3.3V on the POWER SUPPLY Unit. • Check the voltage of P.ON-H is about 2.8V on the POWER SUPPLY Unit. 	POWER SUPPLY Unit
		Check that the following voltage are output : IC4006-pin 5 : 1.8V, on the DVD MT PCB Assy.	DVD MT PCB Assy 1.8V Regulator IC (IC4006)
		Is a resonator (X4001 : 27MHz) on the DVDM Assy oscillating ?	DVD MT PCB Assy Crystal resonator (X4001)
		<ul style="list-style-type: none"> • Is a signal input into IC603-pin26 (PCE#) on the DVDM Assy ? (Is a signal "H" for 80 mS and then "L" after the power is turned on ?) → Communication with flash ROM. • Are the signals input into IC4005-pin 16 (DWE#), pin 19 (DCS#) and pin 38 (SDCLK) on the DVDM Assy ? (Is a signal fluctuating ?) → Communication with SDRAM 	DVD MT PCB Assy DVD IC (IC4002) Flash ROM (IC4004) SDRAM (IC4005)
		Is a signal output from IC4004-pin 28 (PRD#) on the DVD MT Assy? (Is a signal fluctuating for several hundred mS after the power is turned on ?)	DVD MT PCB Assy Flash ROM (IC4004)
		Are the signals of IC4001-pin 5(SDA) and pin 6(SCL) on the DVDM Assy fluctuating for one or two seconds after the power is turned ?	DVD MT PCB Assy EEPROM (IC4001)
3	An opening screen is not displayed on the monitor (The FL display lights. The mechanism does not work.)	Check the video signal path between DVD IC (DVD MT Assy IC4002) and video-out terminal (see the block diagram)	DVD MT PCB Assy Video circuit after DVD IC (IC4002)



A

B

C

D

E

F

CLICK HERE TO **DOWNLOAD** THE COMPLETE MANUAL

- Thank you very much for reading the preview of the manual.
- You can download the complete manual from: www.heydownloads.com by clicking the link below



- Please note: If there is no response to CLICKING the link, please download this PDF first and then click on it.

CLICK HERE TO **DOWNLOAD** THE COMPLETE MANUAL