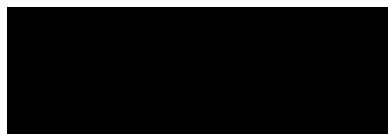


Service Manual



ORDER NO.
CRT2847

DEH-P940MP/UC

MULTI-CD/DAB CONTROL DSP HIGH POWER CD/MP3/WMA PLAYER WITH FM/AM TUNER

DEH-P940MP UC

DEH-P9400MP UC

DEH-P9450MP ES

This service manual should be used together with the following manual(s):

Model No.	Order No.	Mech.Module	Remarks
CX-3007	CRT2820	S9MP3	CD Mech. Module:Circuit Description,Mech. Description,Disassembly



For details, refer to "Important symbols for good services".

CLICK HERE TO **DOWNLOAD** THE COMPLETE MANUAL

- Thank you very much for reading the preview of the manual.
- You can download the complete manual from: www.heydownloads.com by clicking the link below



- Please note: If there is no response to CLICKING the link, please download this PDF first and then click on it.

CLICK HERE TO **DOWNLOAD** THE COMPLETE MANUAL

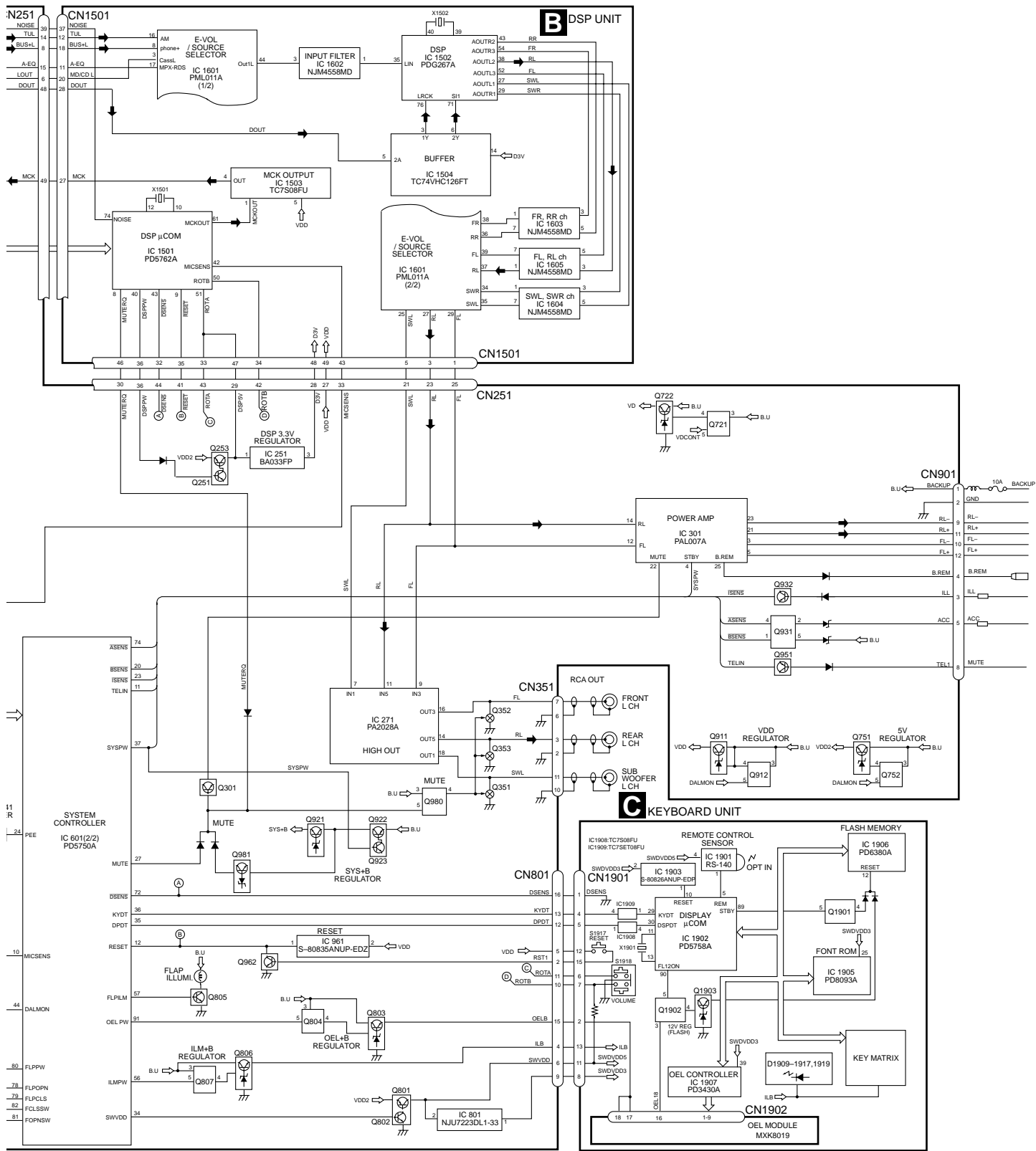
(1) EXTERIOR(1)(DEH-P940MP,P9400MP) SECTION PARTS LIST

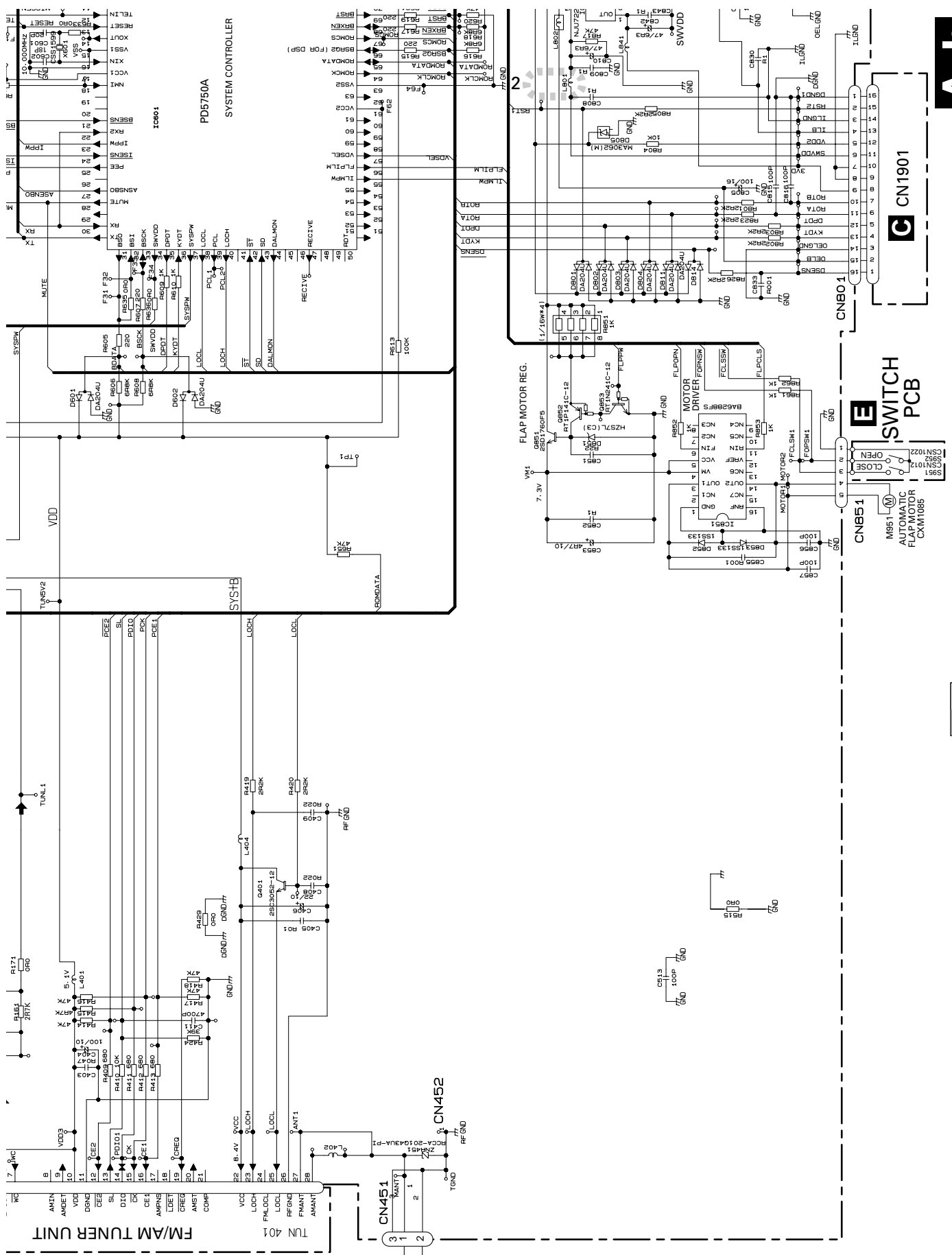
<u>Mark No.</u>	<u>Description</u>	<u>Part No.</u>	<u>Mark No.</u>	<u>Description</u>	<u>Part No.</u>
1	Panel Assy	CXB6738	37	Mini-Jack	CKN1015
2	Screw(M2x2.5)	CBA1447	38	Connector	CKS4436
3	Grille Unit	See Contrast table(2)	39	Frame	CNC8201
4	Button(RESET)	CAC7493	40	Spacer	CNM6155
5	Button Unit	See Contrast table(2)	41	Spacer	CNM6156
6	Button(PRESET)	See Contrast table(2)	42	Spacer	CNM7427
7	Button(SRC)	CAC7491	43	PCB	CNP5341
8	Lighting Conductor	CNV7051	44	PCB	CNP5941
9	Button(EJECT)	See Contrast table(2)	45	PCB	CNP6124
10	Lighting Conductor	CNV7050	46	Guide	CNV5696
11	Button(BAND)	CAC7492	47	Rack	CNV5697
12	Keyboard Unit	CWM8231	48	Gear	CNV5698
* 13	Badge	See Contrast table(2)	49	Gear	CNV5761
14	Cover Unit	CXB9308	50	Gear Unit	CNV5762
15	Screw	BPZ20P080FZK	51	Cover	CNV6573
16	Detach Grille Assy	See Contrast table(2)	52	Holder	CNV6575
17	Knob Unit	See Contrast table(2)	53	Switch(S951)	CSN1012
18	OEL Module	MXK8019	54	Switch(S952)	CSN1022
19	Spacer	CNM7529	55	Arm Unit	CXB3574
20	Cushion	CNM7809	56	Bracket Unit	CXB3577
21	Connector	CDE6741	57	Arm Unit	CXB3866
22	Lighting Conductor	CNV7052	58	Holder Unit	CXB6726
23	Spacer	CNM7409	59	Frame Unit	CXB6727
24	Connector(CN1901)	CKS4435	60	Motor	CXM1085
25	Connector(CN1902)	CKS3995	61	Washer	2-1816-0035-D2-00
26	Screw	BMZ20P030FMC	62	Washer	2-1821-0045-D2-00
27	Screw	BPZ20P060FMC	63	Panel	CNS6397
28	Screw(M2x7)	CBA1060	64	Lighting Conductor	CNV6574
29	Screw(M2x3)	CBA1061	65	Cover	CNM6489
30	Screw(M2x3)	CBA1154	66	Holder	CNC8659
31	Screw(M2x1.5)	CBA1430	67	Panel	See Contrast table(2)
32	Screw(M1.4x4)	CBA1454	68	Remote Control Assy	CZX3257
33	Screw(M2x1.5)	CBA1528	69	Cover	CZN7655
34	Spring	CBH2445	70	Grille Unit(Service)	See Contrast table(2)
35	Cord	CDE5856	71	Spacet	CNM7959
36	Cord	CDE5960			

(2) CONTRAST TABLE

DEH-P940MP/UC and DEH-P9400MP/UC are constructed the same except for the following:

<u>Mark</u>	<u>NO</u>	<u>Symbol and Description</u>	<u>DEH-P940MP/UC</u>	<u>DEH-P9400MP/UC</u>
	3	Grille Unit	CXB8550	CXB9470
	5	Button Unit	CXB9378	CXB9385
	6	Button(PRESET)	CAC7497	CAC7495
	9	Button(EJECT)	CAC7496	CAC7494
*	13	Badge	CAH1755	CAH1754
	16	Detach Grille Assy	CXB8488	CXB8489
	17	Knob Unit	CXB9377	CXB8551
	67	Panel	CNS6360	CNS6989
	70	Grille Unit(Service)	CXX1618	CXX1617





A-b

E SWITCH PCB

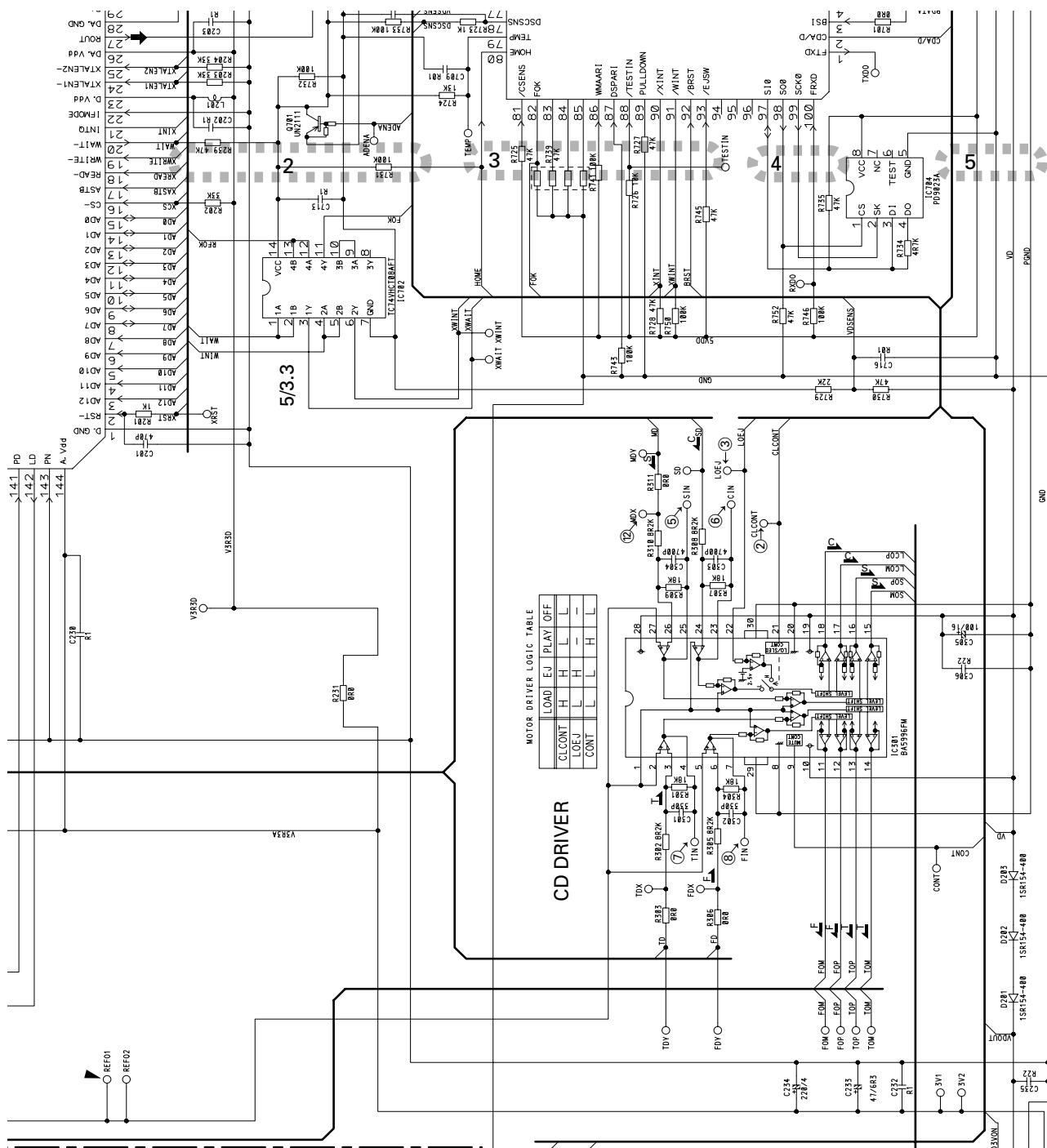
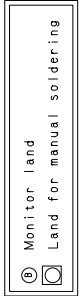
M9511 AUTOMATIC FLAP MOTOR CXM1085

A-a A-b

A-a E

the lens moves w/ish side.
 T. ACT Applying positive voltage to TOP.
 the lens moves outer circumference.

- SWITCHES:**
 CD CORE UNIT (9MPF3)
 S901 : HOME SWITCH ON-OFF
 S902 : CLAMP SWITCH ON-OFF
 S903 : DSCSNS SWITCH ON-OFF
 S904 : 12EJ SWITCH ON-OFF
 S905 : 8EJ SWITCH ON-OFF
- The underlined indicates the switch position.



MOTOR DRIVER LOGIC TABLE

LOAD	EJ	PLAY	OFF
CLCONT	H	H	L
LOEJ	L	H	L
CONT	L	L	H

+3.3V REGULATOR

F-b

F-a F-b

F-a

CLICK HERE TO **DOWNLOAD** THE COMPLETE MANUAL

- Thank you very much for reading the preview of the manual.
- You can download the complete manual from: www.heydownloads.com by clicking the link below

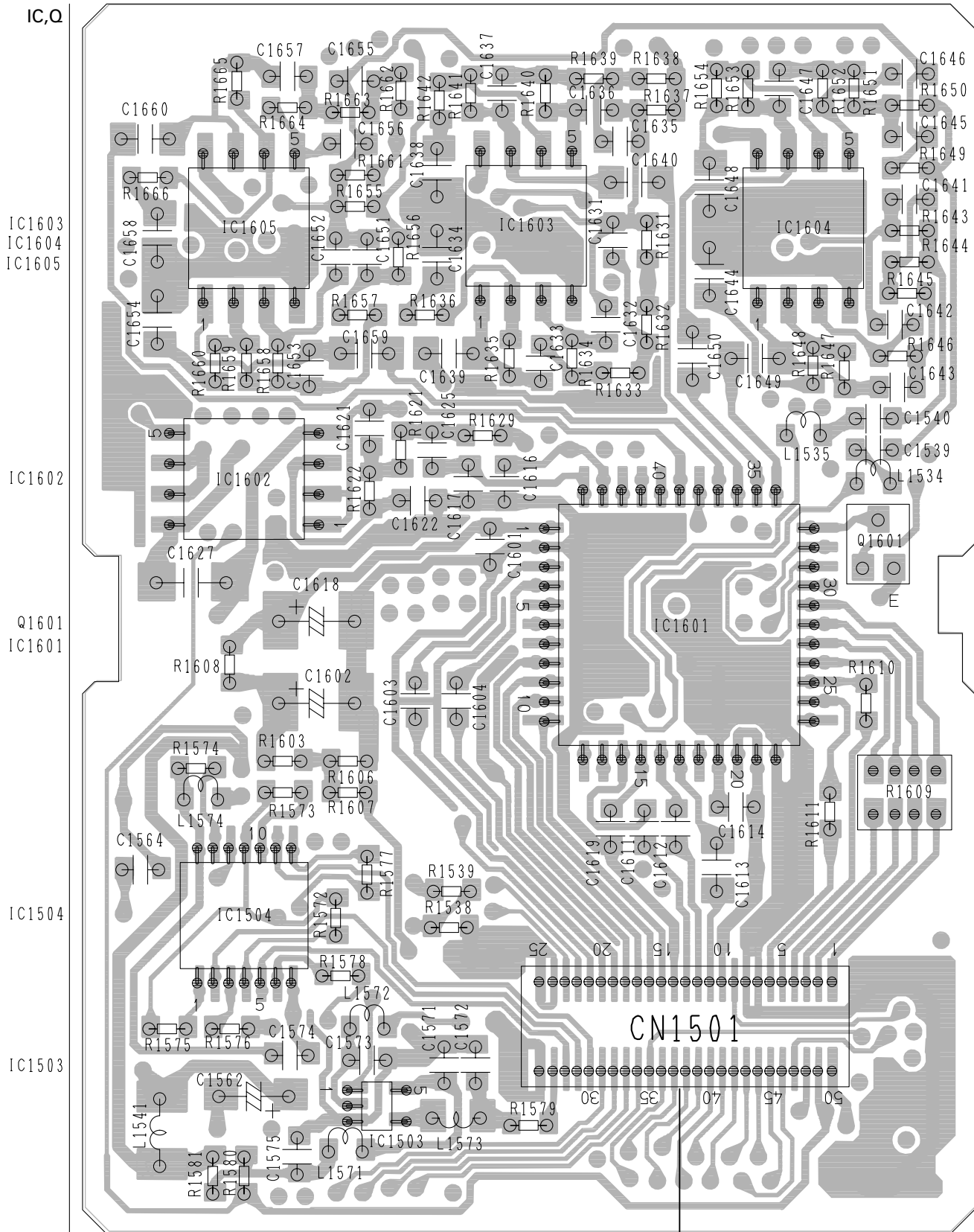


- Please note: If there is no response to CLICKING the link, please download this PDF first and then click on it.

CLICK HERE TO **DOWNLOAD** THE COMPLETE MANUAL

B DSP UNIT

SIDE B



IC,Q
 IC1603
 IC1604
 IC1605

IC1602

Q1601
 IC1601

IC1504

IC1503

A CN251

B

Circuit Symbol and No. Part Name Part No.

C 932		CKSRYB104K25
C 962		CKSRYB104K16
C 963		CKSRYB105K10

Circuit Symbol and No. Part Name Part No.

D 141	Diode	UDZS3R9(B)
D 142	Diode	RB706F-40
D 272	Diode	DA204K
D 591	Diode	HZS11L(C3)
D 601	Diode Network	DA204U

A Unit Number: CWM8224(P9400MP/UC)
Unit Name: Tuner Amp Unit

MISCELLANEOUS

IC 101	IC	HA12187FP
IC 141	IC	NJM4558MD
IC 142	IC	NJM4558MD
IC 251	IC	BA033FP
IC 271	IC	PA2028A
IC 301	IC	PAL007A
IC 601	IC	PD5750A
IC 801	IC	NJU7223DL1-33
IC 851	IC	BA6288FS
IC 961	IC	S-80835ANUP-EDZ

D 602	Diode Network	DA204U
D 721	Diode	HZS9L(B1)
D 752	Diode	HZS6L(B3)
D 801	Diode Network	DA204U
D 802	Diode Network	DA204U

Q 101	Transistor	2SA1235A-12
Q 102	Transistor	RT1N241C-12
Q 131	Transistor	2SC3052-12
Q 132	Transistor	IMD2A
Q 133	Transistor	2SC3052-12

D 803	Diode Network	DA204U
D 804	Diode Network	DA204U
D 805	Diode	MA3062(M)
D 810	Diode	HZS9L(C2)
D 811	Diode Network	DA204U

Q 251	Transistor	RT1N141C-12
Q 253	Transistor	2SB1198K
Q 301	Transistor	RT1N241C-12
Q 351	Transistor	IMH3A
Q 352	Transistor	IMH3A

D 814	Diode Network	DA204U
D 815	Diode	HZS11L(A1)
D 851	Diode	HZS7L(C3)
D 852	Diode	1SS133
D 853	Diode	1SS133

Q 353	Transistor	IMH3A
Q 401	Transistor	2SC3052-12
Q 591	Transistor	IMD2A
Q 593	Transistor	2SD1859
Q 721	Transistor	IMD2A

D 901	Diode	MPG06G-6415G50
D 902	Diode	MPG06G-6415G50
D 903	Diode	MPG06G-6415G50
D 904	Diode	MPG06G-6415G50
D 911	Diode	MPG06G-6415G50

Q 722	Transistor	2SD2375
Q 751	Transistor	2SD2375
Q 752	Transistor	IMD2A
Q 801	Transistor	2SB808
Q 802	Transistor	RT1N141C-12

D 912	Diode	HZS6L(B1)
D 921	Diode	HZS9L(B3)
D 931	Diode	HZS7L(A1)
D 932	Diode	HZS7L(C3)
D 933	Diode	MPG06G-6415G50

Q 803	Transistor	2SD2318F5
Q 804	Transistor	IMD2A
Q 805	Transistor	2SC3052-12
Q 806	Transistor	2SD1859
Q 807	Transistor	IMD2A

D 951	Diode	DAN202U
D 961	Diode	DAN202U
D 971	Diode	DAN202U
D 981	Diode	DAN202U
D 982	Diode	HZS9L(A2)

Q 851	Transistor	2SD1760F5
Q 852	Transistor	RT1P141C-12
Q 853	Transistor	RT1N241C-12
Q 911	Transistor	2SD1760F5
Q 912	Transistor	IMD2A

D 983	Diode	DAN202U
ZNR451	Surge Protector	RCCA-201Q43UA-PI
L 101	Inductor	LCTB3R3K2125
L 251	Inductor	LAU1R0K
L 252	Ferri-Inductor	LAU2R2K

Q 921	Transistor	2SD2375
Q 922	Transistor	2SB1238
Q 923	Transistor	RT1N141C-12
Q 931	Transistor	IMX1
Q 932	Transistor	RT1N141C-12

L 253	Inductor	CTF1531
L 254	Inductor	CTF1529
L 255	Inductor	CTF1388
L 271	Ferri-Inductor	LAU101K
L 401	Inductor	LAU100K

Q 951	Transistor	2SA1235A-12
Q 962	Transistor	2SC3052-12
Q 980	Transistor	IMD2A
Q 981	Transistor	2SC3052-12
D 131	Diode	MA3039(L)

L 402	Inductor	LCTB4R7K2125
L 404	Ferri-Inductor	LAU2R2K
L 601	Inductor	LAU100K
L 661	Inductor	LAU100K
L 801	Inductor	LAU100K

L 802	Inductor	CTF1489
L 841	Inductor	LAU100K
L 951	Inductor	CTF1530
X 601	Radiator 10.000MHz	CSS1599
S 601	Switch(DSP MODE)	CSH1055

IL 801	Lamp 14V 60mA	CEL1690
VR141	Semi-fixed 10kΩ(B)	CCP1448
MIC141	Microphone	CPM1011
SP641	Buzzer	CPV1050
	FM/AM Tuner Unit	CWE1563

Circuit Symbol and No. Part Name Part No.

X 1501 Radiator 10.00MHz CSS1428
 X 1502 Radiator 16.9344MHz CSS1463

RESISTORS

R 1501 RS1/16S473J
 R 1504 RAB4C681J
 R 1505 RS1/16S102J
 R 1506 RS1/16S102J
 R 1507 RS1/16S105J

R 1508 RS1/16S102J
 R 1510 RS1/16S471J
 R 1511 RS1/16S102J
 R 1512 RAB4C473J
 R 1513 RS1/16S222J

R 1514 RAB4C681J
 R 1515 RS1/16S104J
 R 1516 RAB4C471J
 R 1517 RS1/16S473J
 R 1518 RS1/16S102J

R 1519 RS1/16S473J
 R 1520 RS1/16S102J
 R 1521 RS1/16S222J
 R 1522 RS1/16S222J
 R 1523 RS1/16S104J

R 1524 RS1/16S102J
 R 1525 RS1/16S102J
 R 1526 RS1/16S102J
 R 1527 RS1/16S221J
 R 1528 RS1/16S102J

R 1530 RS1/16S473J
 R 1531 RS1/16S225J
 R 1532 RS1/16S331J
 R 1533 RS1/16S155J
 R 1534 RAB4C221J

R 1535 RS1/16S221J
 R 1536 RS1/16S221J
 R 1539 RS1/16S473J
 R 1571 RS1/16S221J
 R 1572 RS1/16S473J

R 1573 RS1/16S473J
 R 1574 RS1/16S473J
 R 1575 RS1/16S473J
 R 1576 RS1/16S102J
 R 1577 RS1/16S102J

R 1578 RS1/16S102J
 R 1579 RS1/16S0R0J
 R 1581 RS1/16S0R0J
 R 1603 RS1/16S103J
 R 1606 RS1/16S103J

R 1607 RS1/16S153J
 R 1608 RS1/16S682J
 R 1609 RAB4C0R0J
 R 1610 RS1/16S0R0J
 R 1611 RS1/16S0R0J

R 1621 RS1/16S223J
 R 1622 RS1/16S472J
 R 1623 RS1/16S223J
 R 1624 RS1/16S472J
 R 1625 RS1/16S103J

Circuit Symbol and No. Part Name Part No.

R 1626 RS1/16S103J
 R 1627 RS1/16S103J
 R 1628 RS1/16S103J
 R 1629 RS1/16S474J
 R 1630 RS1/16S474J

R 1631 RS1/16S474J
 R 1632 RS1/16S222J
 R 1633 RS1/16S333J
 R 1634 RS1/16S273J
 R 1635 RS1/16S183J

R 1636 RS1/16S273J
 R 1637 RS1/16S474J
 R 1638 RS1/16S222J
 R 1639 RS1/16S333J
 R 1640 RS1/16S273J

R 1641 RS1/16S183J
 R 1642 RS1/16S273J
 R 1643 RS1/16S474J
 R 1644 RS1/16S222J
 R 1645 RS1/16S333J

R 1646 RS1/16S273J
 R 1647 RS1/16S183J
 R 1648 RS1/16S273J
 R 1649 RS1/16S474J
 R 1650 RS1/16S222J

R 1651 RS1/16S333J
 R 1652 RS1/16S273J
 R 1653 RS1/16S183J
 R 1654 RS1/16S273J
 R 1655 RS1/16S474J

R 1656 RS1/16S222J
 R 1657 RS1/16S333J
 R 1658 RS1/16S273J
 R 1659 RS1/16S183J
 R 1660 RS1/16S273J

R 1661 RS1/16S474J
 R 1662 RS1/16S222J
 R 1663 RS1/16S333J
 R 1664 RS1/16S273J
 R 1665 RS1/16S183J

R 1666 RS1/16S273J
 R 1667 RS1/16S472J
 R 1668 RS1/16S104J
 R 1669 RS1/16S102J
 R 1670 RS1/16S473J

R 1671 RS1/16S0R0J
 R 1672 RS1/16S102J
 R 1673 RS1/16S473J

CAPACITORS

C 1532 CKSRYB102K50
 C 1533 CSZSQ4R7M10
 C 1534 CKSRYB104K16
 C 1535 CKSQYB225K10
 C 1537 CKSQYB225K10

C 1539 CKSRYB105K10
 C 1540 CKSRYB105K10
 C 1541 CKSRYB105K10
 C 1542 CKSRYB105K10
 C 1543 CKSRYB105K10

If there is even a single error, the following types of messages will be displayed:

(1) An example of a basic operational error

FLASH SETUP NG

(2) An example of a flash data writing error display

FLASH WRITING NG

(3) An example of a flash data reading error display

FLASH WRITING DATA NG

(4) An example of a flash work deletion error display(verification process completed)

FLASH SECTOR ERASE NG

Cautions

Normal operations are enabled by pressing a key, etc., even if the system is engaged in conducting a display test mode. Please be aware that the display test mode is merely a mode wherein the display is switched by the BAND key, and not a special state of the system.

Important Issues:

If a data bus or an address bus error is encountered, during flash ROM verifications, DO NOT PERFORM FLASH ROM WRITING VERIFICATIONS. Please turn OFF the ACC (since data in any region can be deleted while a writing test is conducted).

Supplimentary Information

If "TEST" is not displayed while the test mode is turned ON:

There may be a problem with communications between the system and the grill, or there may be abnormalities with the OEL line or OEL itself (if a beep tone is emitted).

If the data or address bus verification yields an "NG" result:

Even if the "BUS NG" is displayed as a result of the data bus verification, it does not necessarily imply that there is an abnormality within the data bus.

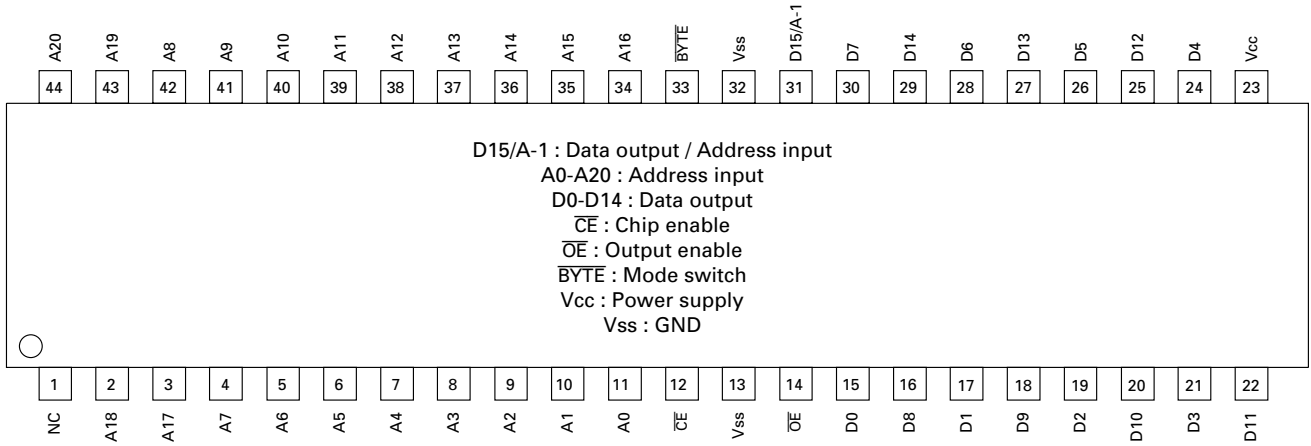
If there is an abnormality with the address bus, the data of a wrong address will be read, resulting in data abnormality.

If the flash ROM verification yields an "NG" result:

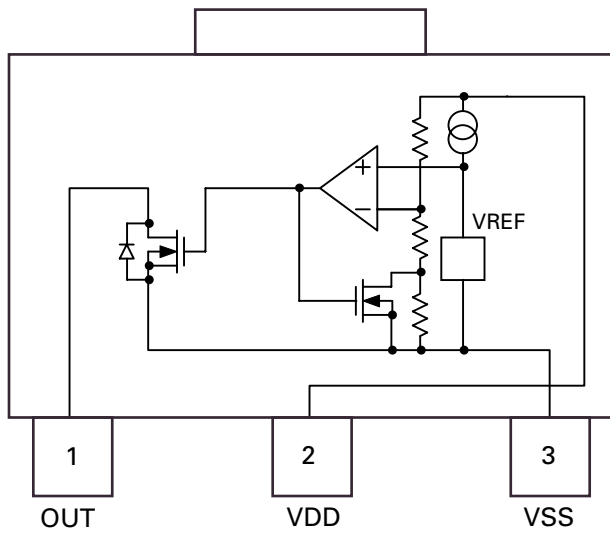
The Flash ROM is not accepting the commands in a normal manner, or there is an abnormality with data deletion or writing operations.

The Flash ROM has a limited life. The guaranteed component life is 10,000 data rewrites. If the component reaches the end of its life, it appears that an electrostatic buildup will occur and no more "0" can be written in the flash memory.

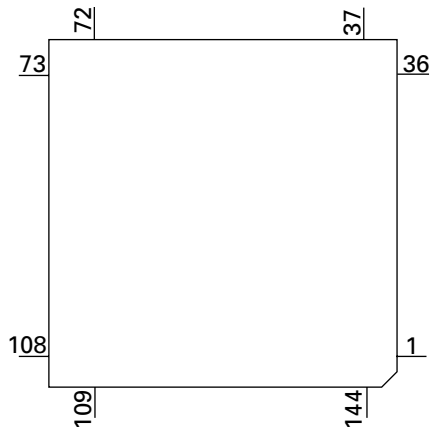
*PD8093A



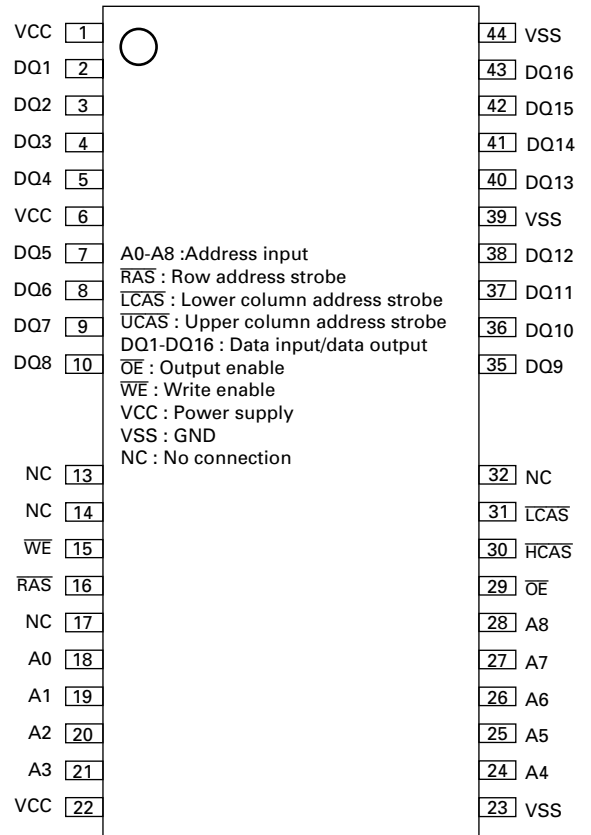
*S-80826ANUP-EDP



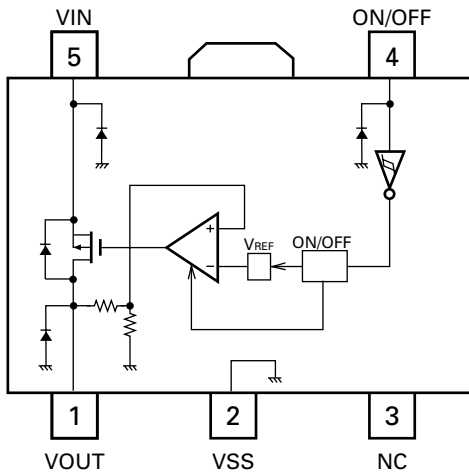
*UPD63760GJ



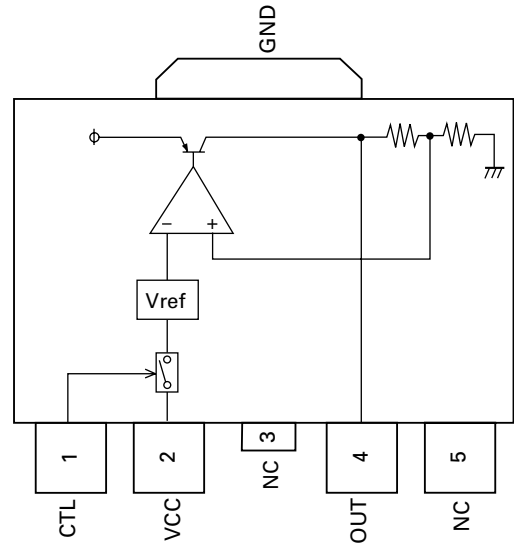
*MSM51V4265EP-70TS



*S-818A33AUC-BGN



BA25BC0WFP



CLICK HERE TO **DOWNLOAD** THE COMPLETE MANUAL

- Thank you very much for reading the preview of the manual.
- You can download the complete manual from: www.heydownloads.com by clicking the link below



- Please note: If there is no response to CLICKING the link, please download this PDF first and then click on it.

CLICK HERE TO **DOWNLOAD** THE COMPLETE MANUAL