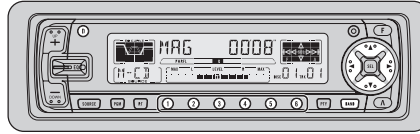


Service Manual

Pioneer

DEH-P700R/UC



ORDER NO.
CRT2373

MULTI-CD CONTROL HIGH POWER CD PLAYER WITH RDS TUNER

DEH-P700R

UC

DEH-P7000R

UC

MULTI-CD CONTROL HIGH POWER CD PLAYER WITH FM/AM TUNER

DEH-P7050

ES

COMPACT
disc
DIGITAL AUDIO

- See the separate manual CX-916(CRT2300) for the CD mechanism description, disassembly and circuit description.
- The CD mechanism employed in this model is one of S8 series.
- This device employs an inverter as the power supply for EL. The inverter has an output voltage reach approximately 500 volts(AC). Utmost care should be used not to suffer from a possible electric shock, accordingly.
- When executing an operation, be aware that the in around IC651 can become quite hot to the touch.

CONTENTS

1. SAFETY INFORMATION	2	7. GENERAL INFORMATION	74
2. EXPLODED VIEWS AND PARTS LIST	2	7.1 PARTS	74
3. BLOCK DIAGRAM AND SCHEMATIC DIAGRAM ...	14	7.1.1 IC.....	74
4. PCB CONNECTION DIAGRAM	46	7.1.2 DISPLAY	84
5. ELECTRICAL PARTS LIST	56	7.2 DIAGNOSIS	86
6. ADJUSTMENT	70	7.2.1 DISASSEMBLY	86
		7.2.2 TEST MODE	90
		8. OPERATIONS AND SPECIFICATIONS.....	94

PIONEER ELECTRONIC CORPORATION 4-1, Meguro 1-Chome, Meguro-ku, Tokyo 153-8654, Japan
PIONEER ELECTRONICS SERVICE INC. P.O.Box 1760, Long Beach, CA 90801-1760 U.S.A.
PIONEER ELECTRONIC [EUROPE] N.V. Haven 1087 Keetberglaan 1, 9120 Melsele, Belgium
PIONEER ELECTRONICS ASIACENTRE PTE.LTD. 253 Alexandra Road, #04-01, Singapore 159936

CLICK HERE TO **DOWNLOAD** THE COMPLETE MANUAL

- Thank you very much for reading the preview of the manual.
- You can download the complete manual from: www.heydownloads.com by clicking the link below



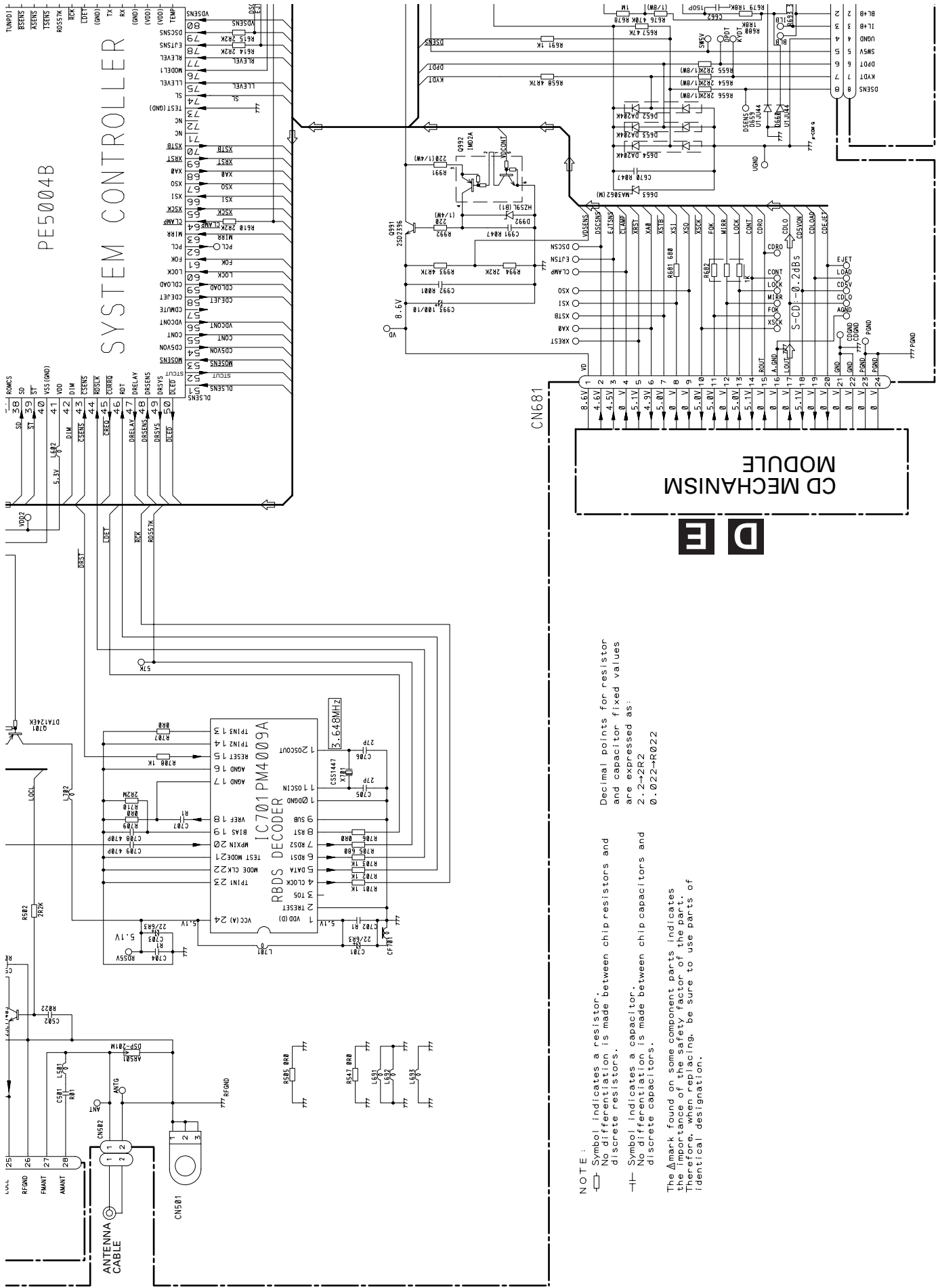
- Please note: If there is no response to CLICKING the link, please download this PDF first and then click on it.

CLICK HERE TO **DOWNLOAD** THE COMPLETE MANUAL

● EXTERIOR SECTION PARTS LIST

Mark No.	Description	Part No.	Mark No.	Description	Part No.
1	Screw	BMZ30P040FMC	56	Screw	CBA1176
2	Screw	BSZ26P060FMC	57	Washer	CBF1001
3	Screw	BSZ30P060FMC	58	Spring	CBH2063
4	Screw	BSZ30P100FMC	59	Spring	CBH2204
5	Cord Assy	CDE5821	60	Cord	CDE5800
6	Cord Assy	CDE5828	61	Connector	CKS2780
7	Fuse(10A)	CEK1136	62	Roller	CLA3386
8	Connector	CDE6049	63	Sheet	CNM6109
9	Antenna Cable	CDH1266	64	Cover	CNM6118
10	Transistor(Q954,991)	2SD2396	65	Cushion	CNM6376
11	IC(IC551)	PAL005A	66	PCB	CNP5383
12	Case	CNB2508	67	PCB	CNP5430
13	Holder	CNC6798	68	Holder	CNS5157
14	Holder	CNC8300	69	Holder	CNS5165
15	Holder	CNC8357	70	Panel	CNS5280
16	Spacer	CNM4913	71	Cover	CNS5389
17	Insulator	CNM6075	72	Lighting Conductor	CNV5540
18	Panel	CNS5148	73	Switch(S651)	CSN1027
19	Cap	CNV2680	74	Holder Unit	CXB3049
20	Tuner Amp Unit	CWM6187	75	Holder Unit	CXB3050
21	Screw	ASZ26P080FMC	76	Holder Unit	CXB3051
22	Screw	BPZ26P060FMC	77	Coil(L652,L653)	CTH1228
23	Screw	BSZ26P160FMC	78	Damper Unit	CXB3180
24	Clamper	CEF1009	79	Screw	IMS20P040FZK
25	Pin Jack(CN431)	CKB1028	80	Detach Grille Assy	CXB3683
26	Terminal(CN501)	CKF1059	81	Screw	BPZ20P060FMC
27	Plug(CN951)	CKM1296	82	Screw	BPZ20P080FZK
28	Plug(CN652)	CKS-783	83	Button(OPEN)	CAC5804
29	Connector(CN411)	CKS3408	84	Button(EJECT)	CAC5805
30	Connector(CN433)	CKS3602	85	Button(SOURCE)	CAC5806
31	Connector(CN681)	CKS3838	86	Button(EQ)	CAC5808
32	Connector(CN651)	CKS4077	87	Button(DISP)	CAC5809
33	Mini Pin Jack(CN502)	CKX1046	88	Button(1-6)	CAC5826
34	Panel	CNB2375	89	Button(BAND)	CAC5936
35	Holder	CNC7533	90	Spring	CBH2205
36	Case	CNC8138	91	Cover	CNS5146
37	Holder	CNC8298	92	Holder	CNV5537
38	Holder	CNC8299	93	Keyboard Unit	CWM6197
39	Case	CNC8301	94	LCD	CAW1518
40	Case	CNC8376	95	EL	CEL1592
41	Case	CNC8377	96	Connector(CN901)	CKS2733
42	Heat Sink	CNC8437	97	Holder	CNC8157
43	Insulator	CNM5967	98	Spacer	CNM6379
44	Insulator	CNM6249	99	Double Sided Tape	CNM6380
45	Insulator	CNM6250	100	Connector	CNV5539
46	Insulator	CNM6298	101	Grille Unit	CXB4089
47	Insulator	CNM6299	102	Remote Control Assy	CXB3875
48	Heat Sink	CNR1550	103	Battery Cover	CNS5032
49	Insulator	CNV5816	104	CD Mechanism Module	CXK5200
50	FM/AM Tuner Unit	CWE1501	105	Screw	ISS26P055FUC
51	Holder	CNC7532	106	Screw	CBA1492
52	Chassis Unit	CXB3306	107	Spacer	CNM6421
53				
54	Screw	BPZ20P060FMC			
55	Screw	CBA1082			

A-a A-b



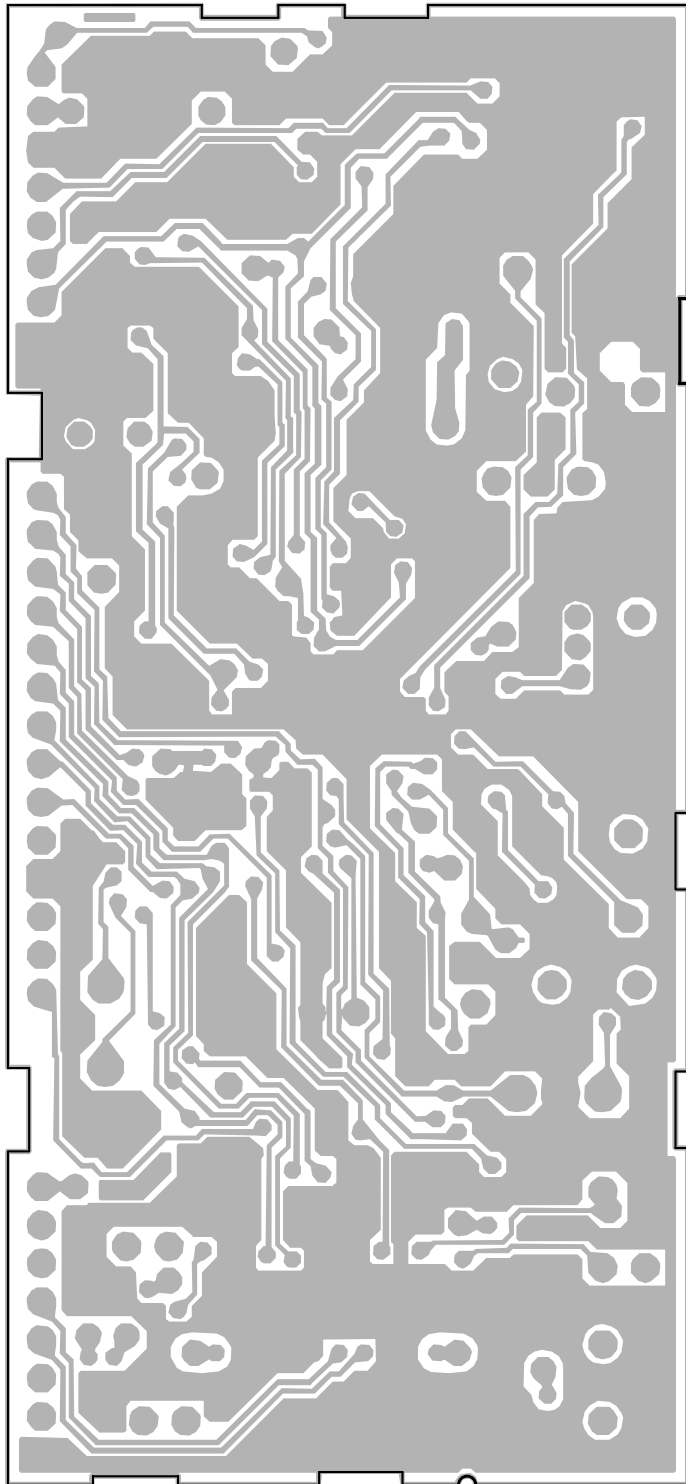
NOTE :

- Symbol indicates a resistor. No differentiation is made between chip resistors and discrete resistors.
- ⊣ Symbol indicates a capacitor. No differentiation is made between chip capacitors and discrete capacitors.

The Δ mark found on some component parts indicates the importance of the safety factor of the part. Therefore, when replacing, be sure to use parts of identical designation.

A B C D

SIDE B

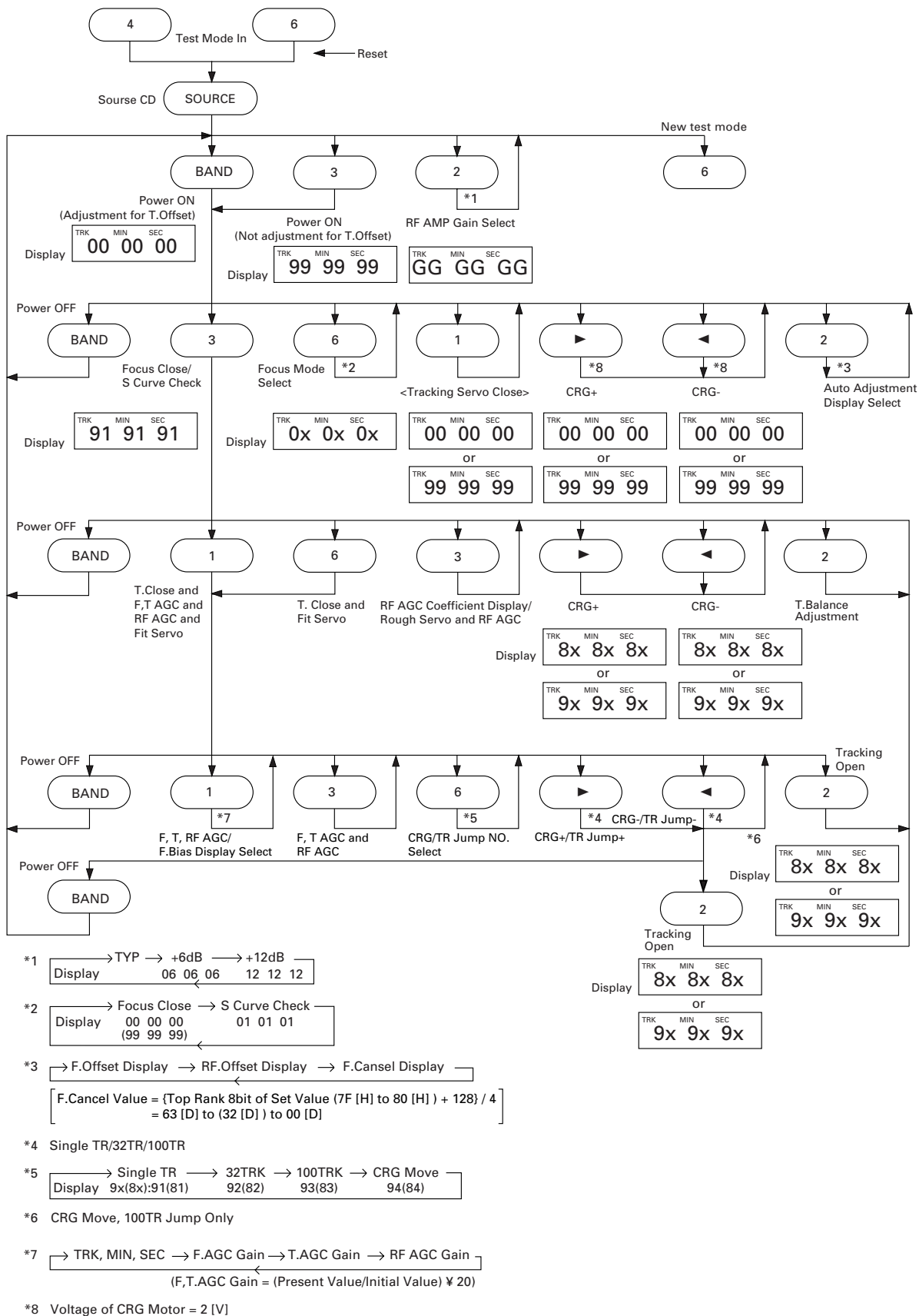


B FM/AM TUNER UNIT

B

====Circuit Symbol and No.====Part Name	Part No.	====Circuit Symbol and No.====Part Name	Part No.
R 514	RS1/10S681J	R 670	RS1/10S103J
R 515	RS1/10S473J	R 671	RS1/10S472J
R 516	RS1/10S681J	R 672	RS1/8S151J
R 517	RS1/10S472J	R 673	RS1/8S225J
R 518	RS1/10S103J	R 674	RS1/8S225J
R 520	RS1/10S681J	R 675	RS1/16S473J
R 521	RS1/8S151J	R 676	RS1/8S474J
R 522	RS1/10S681J	R 677	RS1/8S474J
R 523	RS1/10S473J	R 678	RS1/8S105J
R 524	RS1/10S0R0J	R 679	RD1/2PM182J
R 525	RS1/10S0R0J	R 680	RD1/2PM182J
R 532	RS1/10S681J	R 681	RS1/10S681J
R 533	RS1/10S473J	R 682	RA3C102J
R 541	RS1/10S272J	R 685	RS1/10S152J
R 542	RS1/10S272J	R 686	RS1/16S622J
R 544	RS1/10S393J	R 687	RS1/8S151J
R 545	RS1/10S162J	R 688	RS1/16S912J
R 546	RS1/10S162J	R 690	RS1/8S151J
R 547	RS1/10S0R0J	R 691	RS1/10S102J
R 551	RS1/10S103J	R 692	RS1/8S391J
R 552	RS1/10S103J	R 693	RS1/8S391J
R 553	RS1/10S331J	R 694	RS1/16S473J
R 581	RS1/16S331J	R 701	RS1/10S102J
R 582	RS1/16S331J	R 702	RS1/10S102J
R 583	RS1/16S331J	R 703	RS1/10S102J
R 584	RS1/16S331J	R 705	RS1/10S681J
R 585	RS1/16S331J	R 706	RS1/10S0R0J
R 586	RS1/16S331J	R 707	RS1/10S0R0J
R 603	RS1/10S473J	R 708	RS1/10S102J
R 604	RS1/10S102J	R 709	RS1/10S0R0J
R 606	RS1/10S473J	R 710	RS1/10S225J
R 607	RA3C102J	R 851	RS1/10S223J
R 610	RS1/10S222J	R 852	RS1/16S223J
R 611	RN1/10SE2202D	R 853	RS1/10S103J
R 612	RS1/10S473J	R 854	RS1/10S272J
R 614	RS1/10S222J	R 855	RS1/10S223J
R 615	RS1/10S222J	R 856	RS1/10S473J
R 616	RS1/10S473J	R 857	RS1/16S473J
R 617	RS1/10S473J	R 858	RS1/16S473J
R 618	RS1/10S473J	R 859	RS1/8S471J
R 622	RS1/10S102J	R 867	RS1/16S103J
R 623	RS1/10S202J	R 868	RD1/4PU102J
R 624	RS1/10S102J	R 870	RS1/10S102J
R 625	RS1/10S102J	R 881	RS1/10S103J
R 626	RS1/10S822J	R 882	RS1/10S102J
R 633	RS1/8S473J	R 951	RD1/4PU102J
R 634	RS1/10S0R0J	R 952	RS1/10S153J
R 637	RS1/16S101J	R 953	RS1/16S472J
R 651	RS1/10S222J	R 954	RS1/16S472J
R 652	RS1/10S472J	R 955	RS1/10S102J
R 653	RS1/10S222J	R 956	RD1/4PU102J
R 654	RS1/8S222J	R 957	RS1/10S101J
R 655	RS1/8S222J	R 958	RS1/10S622J
R 656	RS1/8S222J	R 959	RS1/10S473J
R 657	RS1/10S473J	R 960	RS1/16S473J
R 658	RS1/10S472J	R 961	RS1/10S103J
R 659	RS1/8S472J	R 962	RS1/10S473J
R 660	RD1/4PU102J	R 963	RS1/10S472J
R 661	RS1/10S1R0J	R 964	RS1/10S103J
R 662	RD1/2PM390J	R 965	RS1/10S473J
R 663	RD1/2PM390J	R 966	RS1/10S473J
R 664	RS1/16S473J	R 967	RS1/10S102J
R 667	RS1/10S103J	R 968	RS1/10S102J
R 668	RS1/10S472J	R 969	RD1/4PU221J
R 669	RS1/16S912J	R 970	RS1/10S1R0J

● Flow Chart



● Pin Functions (UPD63710GC)

Pin No.	Pin Name	I/O	Function and Operation
1	GND		Logic circuit GND
2	HOLD	I/O	Defect detection output
3	MIRR	I/O	MIRR output
4	FOK	O	RFOK signal output
5	RST	I	Reset signal input
6	A0	I	Command/parameter identification signal input
7	STB	I	Data strobe signal input
8	SCK	I	Clock signal input for serial data input/output
9	SO	O	Serial data and status signal output
10	SI	I	Serial data input
11	VDD		Positive power supply terminal to logic circuit
12	DA.VDD		Positive power supply terminal to D/A converter
13	NC		Not used
14, 15	DA.GND		D/A converter GND
16	NC		Not used
17	DA.VDD		Positive power supply terminal to D/A converter
18	R+	O	Right channel audio data output
19	R-	O	Right channel audio data output
20	L-	O	Left channel audio data output
21	L+	O	Left channel audio data output
22	X.VDD		Positive power supply terminal to crystal oscillation circuit
23	$\overline{\text{XTAL}}$	O	Crystal oscillator connect pin
24	XTAL	I	Crystal oscillator connect pin
25	X.GND		Crystal oscillation circuit GND
26	VDD		Positive power supply terminal to logic circuit
27	EMPH	O	Output pin for the pre-emphasis data in the sub-Q code
28	FLAG	O	Flag output pin to indicate that audio data currently being output consists of noncorrectable data
29	DIN	I	Serial data input to internal DAC
30	DOUT	O	Serial audio data output
31	SCKIN	I	Serial clock input to internal DAC
32	SCKO	O	Audio data that is output from DOUT changes at rising edge of this clock
33	LRCKIN	I	LRCK signal input to internal DAC
34	LRCK	O	Signals to distinguish the right and left channels of the audio data output from DOUT
35	WDCK	O	Output double the frequency of LRCK
36	TX	O	Digital audio interface data output
37	GND		Logic circuit GND
38	C16M	O	Oscillator clock buffering output
39	LIMIT	I	Status of the pin is output at Bit 5 of the status output
40	VDD		Positive power supply terminal to logic circuit
41	LOCK	O	EFM synchronous detection signal
42	RFCK	O	Frame synchronous signal of XTAL-system
43	WFCK	O	Frame synchronous signal of PLL-system
44	PLCK	O	Monitor pin of bit clock
45	GND		Logic circuit GND
46	C1D1	O	Output pin for indicating the C1 error correction results
47	C1D2	O	Output pin for indicating the C1 error correction results
48	C2D1	O	Output pin for indicating the C2 error correction results
49	C2D2	O	Output pin for indicating the C2 error correction results
50	C2D3	O	Output pin for indicating the C2 error correction results
51	VDD		Positive power supply terminal to logic circuit
52	PACK	O	CD-TEXT PACK synchronous signal
53	TSO	O	CD-TEXT data serial output
54	TSI	I	CD-TEXT control parameter serial input
55	TSCK	I	CD-TEXT serial clock input
56	TSTB	I	CD-TEXT parameter strobe signal input
57	GND		Logic circuit GND
58	TEST	I	Test pin

7.2.2 TEST MODE

● Error Messages

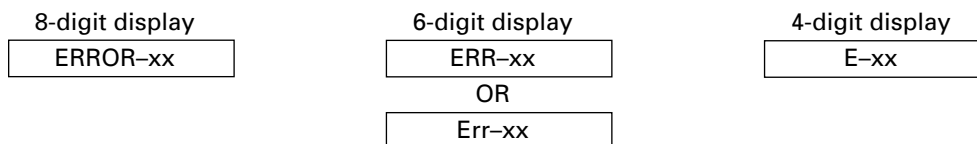
If a CD is not operative or stopped during operation due to an error, the error mode is turned on and cause(s) of the error is indicated with a corresponding number. This arrangement is intended at reducing nonsense calls from the users and also for facilitating trouble analysis and repair work in servicing.

(1) Basic Indication Method

1) When SERRORM is selected for the CSMOD (CD mode area for the system), error codes are written to DMIN (minutes display area) and DSEC (seconds display area). The same data is written to DMIN and DSEC. DTNO remains in blank as before.

2) Head unit display examples

Depending on display capability of LCD used, display will vary as shown below. xx contains the error number.



(2) Error Code List

Code	Class	Displayed error code	Description of the code and potential cause(s)
10	Electricity	Carriage Home NG	CRG can't be moved to inner diameter. CRG can't be moved from inner diameter. → Failure on home switch or CRG move mechanism.
11	Electricity	Focus Servo NG	Focusing not available. → Stains on rear side of disc or excessive vibrations on REWRITABLE.
12	Electricity	Spindle Lock NG Subcode NG RF AMP NG	Spindle not locked. Sub-code is strange (not readable). → Failure on spindle, stains or damages on disc, or excessive vibrations. A disc not containing CD-R data is found. Turned over disc are found, though rarely. → Failure on home switch or CRG move mechanism. An appropriate RF AMP gain can't be determined. → CD signal error.
17	Electricity	Setup NG	APC protection doesn't work. Focus can be easily lost. → Damages or stains on disc, or excessive vibrations.
30	Electricity	Search Time Out	Failed to reach target address. → CRG tracking error or damages on disc.
A0	System	Power Supply NG	Power (VD) is ground faulted. → Failure on SW transistor or power supply (failure on connector).

Remarks: Mechanical errors are not displayed (because a CD is turned off in these errors).

Unreadable TOC does not constitute an error. An intended operation continues in this case.

A newly designed head unit must conform to the example given above.

Upper digits of an error code are subdivided as shown below:

1x: Setup relevant errors, 3x: Search relevant errors, 3x: Search relevant errors, Ax: Other errors.

CLICK HERE TO **DOWNLOAD** THE COMPLETE MANUAL

- Thank you very much for reading the preview of the manual.
- You can download the complete manual from: www.heydownloads.com by clicking the link below



- Please note: If there is no response to CLICKING the link, please download this PDF first and then click on it.

CLICK HERE TO **DOWNLOAD** THE COMPLETE MANUAL