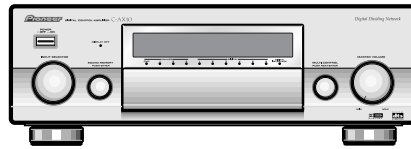


**Pioneer**

# Service Manual



ORDER NO.  
RRV2327

## DIGITAL CONTROL AMPLIFIER **C-AX10**

THIS MANUAL IS APPLICABLE TO THE FOLLOWING MODEL(S) AND TYPE(S).

Type	Model	Power Requirement	Remarks
	C-AX10		
KU/CA	○	AC120V	
NY	○	AC230V	

### CONTENTS

1. SAFETY INFORMATION .....	2	7.1.3 POWER ON SEQUENCE .....	86
2. EXPLODED VIEWS AND PARTS LIST .....	3	7.1.4 DISASSEMBLY .....	90
3. BLOCK DIAGRAM AND SCHEMATIC DIAGRAM .....	10	7.1.5 PCB LAYOUT .....	95
4. PCB CONNECTION DIAGRAM .....	50	7.2 PARTS .....	96
5. PCB PARTS LIST .....	76	7.2.1 IC .....	96
6. ADJUSTMENT .....	83	7.2.2 DISPLAY .....	109
7. GENERAL INFORMATION .....	84	7.3 REMOTE CONTROL UNIT .....	110
7.1 DIAGNOSIS .....	84	8. PANEL FACILITIES AND SPECIFICATIONS .....	113
7.1.1 TEST MODE .....	84		
7.1.2 TROUBLESHOOTING .....	85		

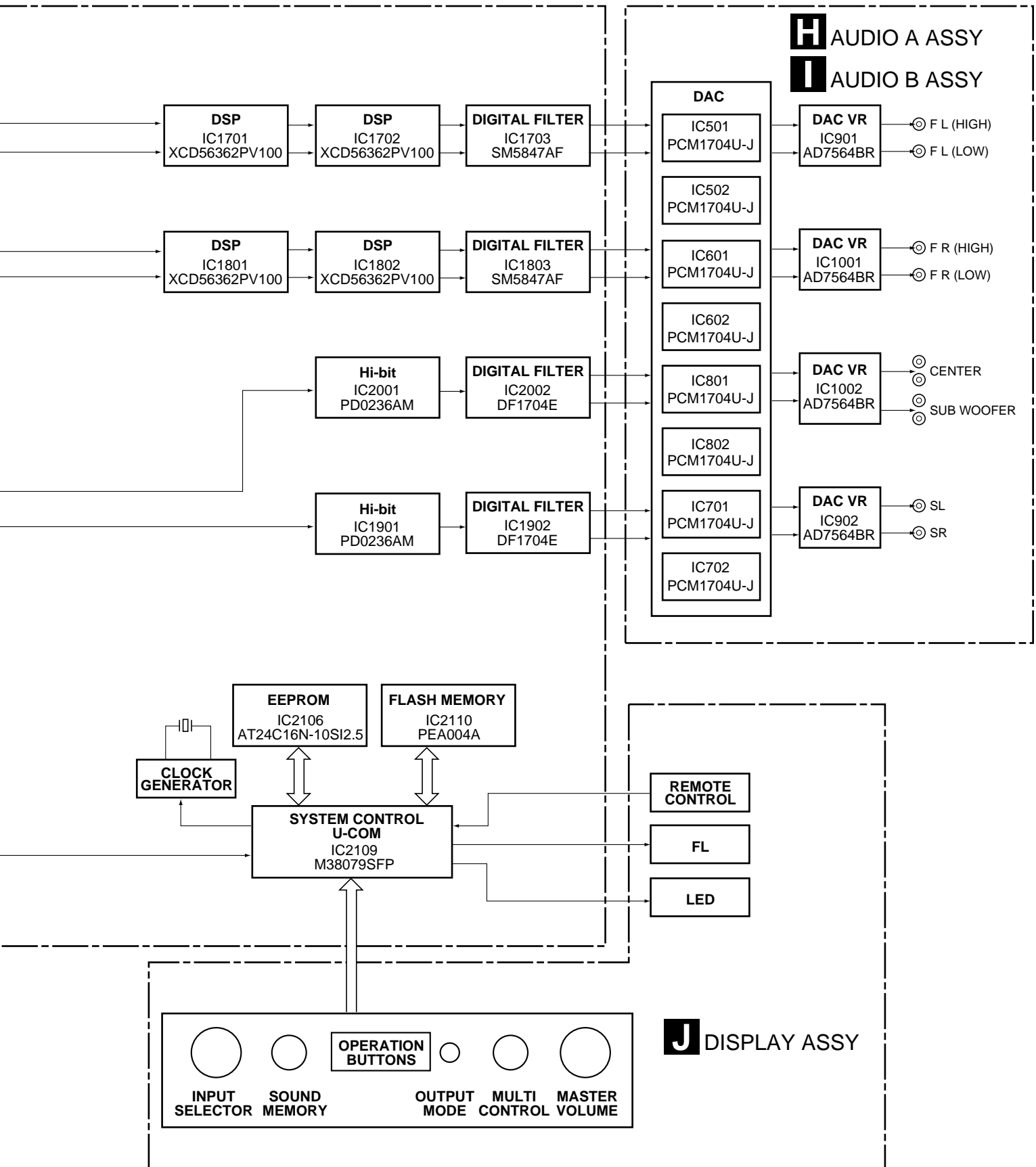
CLICK HERE TO **DOWNLOAD** THE COMPLETE MANUAL

- Thank you very much for reading the preview of the manual.
- You can download the complete manual from: [www.heydownloads.com](http://www.heydownloads.com) by clicking the link below



- Please note: If there is no response to CLICKING the link, please download this PDF first and then click on it.

CLICK HERE TO **DOWNLOAD** THE COMPLETE MANUAL

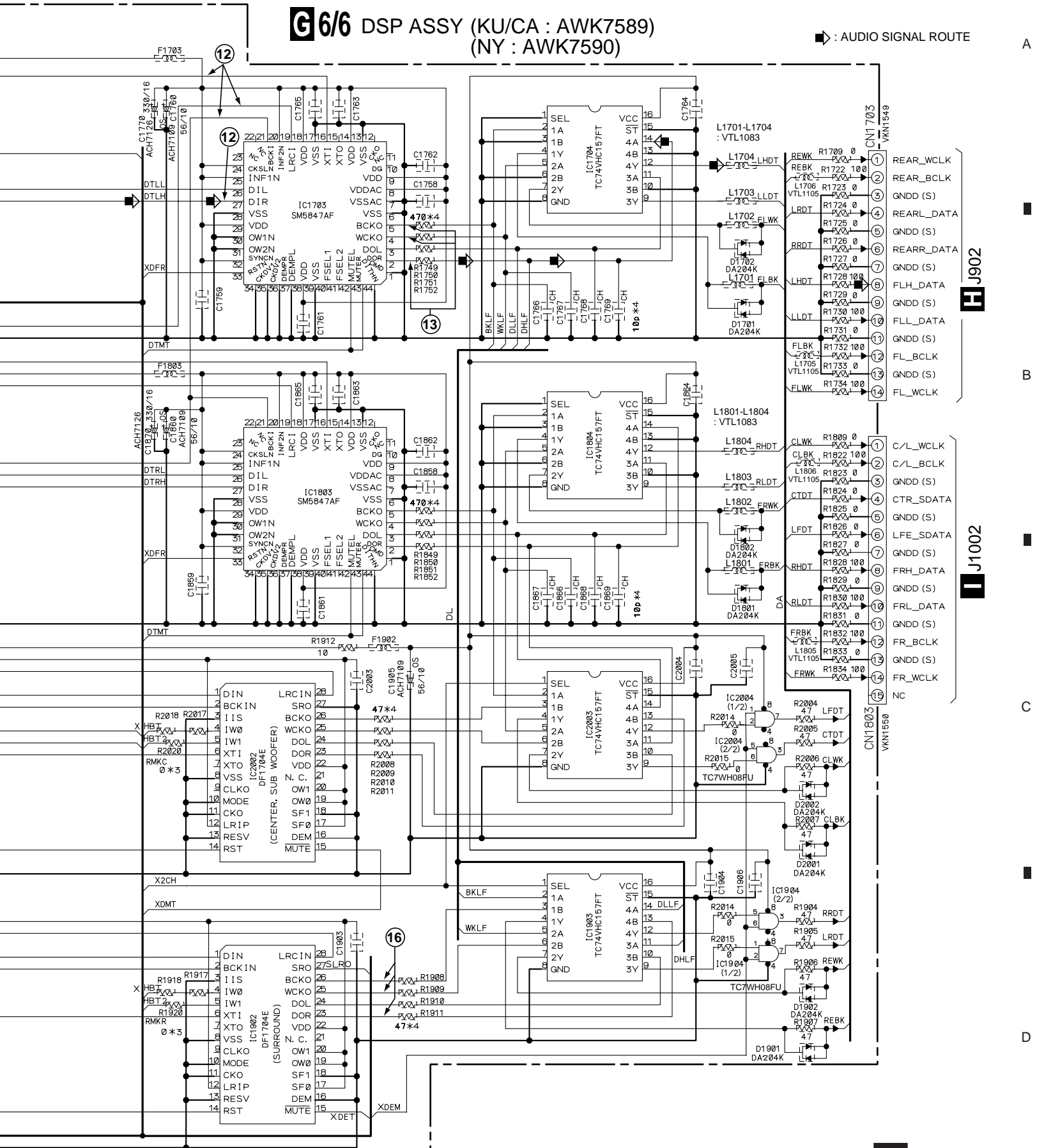






# G6/6 DSP ASSY (KU/CA : AWK7589) (NY : AWK7590)

▶ : AUDIO SIGNAL ROUTE

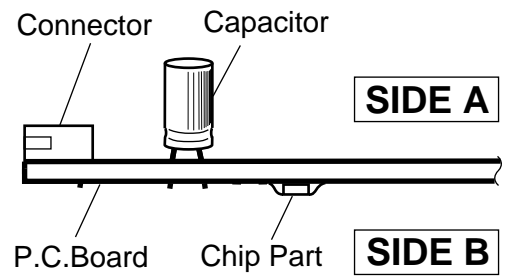


**NOTE FOR PCB DIAGRAMS :**

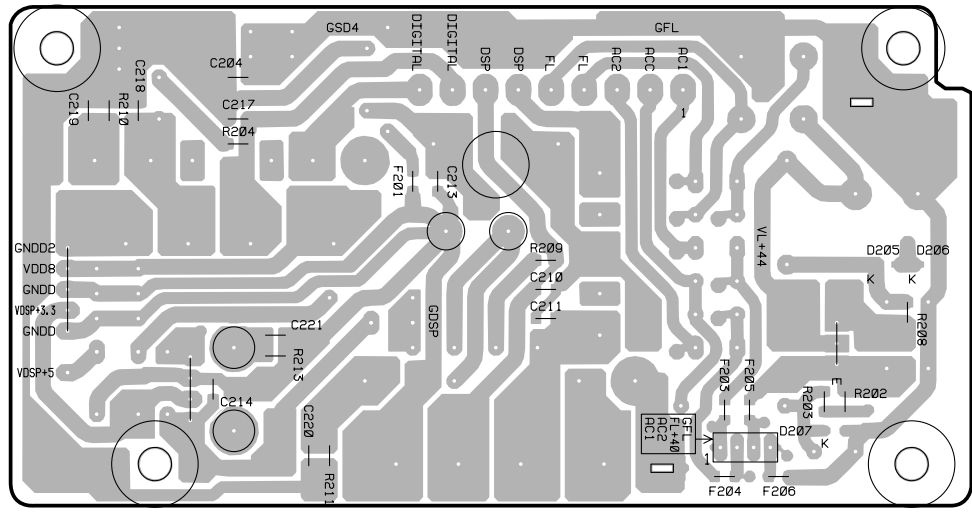
1. Part numbers in PCB diagrams match those in the schematic diagrams.
2. A comparison between the main parts of PCB and schematic diagrams is shown below.

Symbol In PCB Diagrams	Symbol In Schematic Diagrams	Part Name
		Transistor
		Transistor with resistor
		Field effect transistor
		Resistor array
		3-terminal regulator

3. The parts mounted on this PCB include all necessary parts for several destinations.  
For further information for respective destinations, be sure to check with the schematic diagram.
4. View point of PCB diagrams.



**C PS ASSY**



(ANP7293-A)

**SIDE B**

CLICK HERE TO **DOWNLOAD** THE COMPLETE MANUAL

- Thank you very much for reading the preview of the manual.
- You can download the complete manual from: [www.heydownloads.com](http://www.heydownloads.com) by clicking the link below



- Please note: If there is no response to CLICKING the link, please download this PDF first and then click on it.

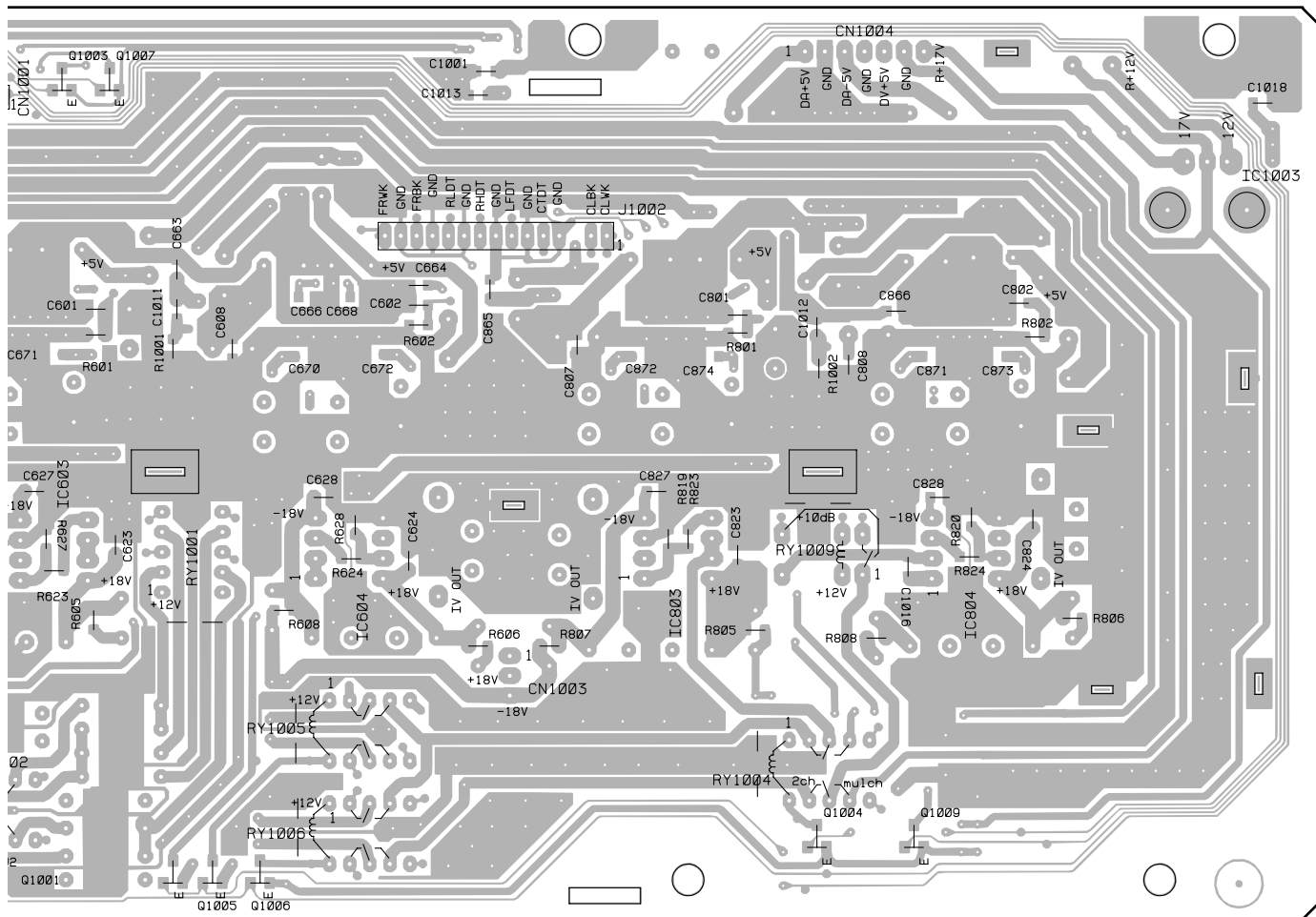
CLICK HERE TO **DOWNLOAD** THE COMPLETE MANUAL



A

B

C



(ANP7291-D)

Y1003 Q1007

Q1001 Q1005 Q1006

Q1004 Q1009

D



Mark	No.	Description	Part No.
<b>OTHERS</b>			
	IC9001,IC9002	IC SOCKET	IC160-0324-230
	J2102	CONNECTOR ASSY 3P	ADX7348
	X1501	CRYSTAL RESONATOR (20MHz)	ASS7023
	X2101,X2102	CERAMIC RESONATOR (7.7MHz)	ASS7026
	CN1602	CONNECTOR 12P	B12B-ZR-SM3
	CN2104	PH CONNECTOR	B2B-PH-SM3
	CN2109	PH CONNECTOR	B3B-PH-SM3
	CN2107	PH CONNECTOR	B8B-PH-SM3
	J2101	STEREO MINI JACK	QKN1004
	JA2101,JA2102	REMOTE CONTROL JACK	RKN1004
	CN2105,CN2106	7P FFC CONNECTOR	VKN1299
	CN1601	14P FFC CONNECTOR	VKN1418
	CN2102	15P FFC CONNECTOR	VKN1419
	CN2101	16P FFC CONNECTOR	VKN1420
	CN2103	17P FFC CONNECTOR	VKN1421
	CN2108	28P FFC CONNECTOR	VKN1432
	CN1703	14P CONNECTOR	VKN1549
	CN1803	15P CONNECTOR	VKN1550
	2105,2106	SCREW TERMINAL	VNE1948
	KN2101-KN2104	EARTH METAL FITTING	VNF1109

## **H** AUDIO A ASSY SEMICONDUCTORS

	IC901,IC902	AD7564BR
	IC503-IC506,IC703-IC706	NJM2114D-D
△	IC903	NJM7812FA
	IC507,IC508,IC707,IC708	OP275GP
	IC501,IC502,IC701,IC702	PCM1704U-J
	Q901-Q908,Q910,Q912	DTC124EK
	D901-D920	1SS355

## COILS AND FILTER

F901	CHIP BEAD	DTF1070
L501-L504,L701-L704	NOISE FILTER	RTF1167
L901,L902	NOISE FILTER	RTF1167

## RELAYS

RY901-RY910	VSR1008
-------------	---------

## CAPACITORS

C519,C520,C719,C720 (100pF)	ACE7015
C531-C534,C733,C734 (150pF)	ACE7016
C731,C732 (330pF)	ACE7017
C529,C530 (1800pF)	ACE7019
C729,C730 (3300pF)	ACE7020
C543,C544,C557,C558 (100μF/50V)	ACH7122
C743,C744,C757,C758 (100μF/50V)	ACH7122
C545-C548,C745-C748	CCSQCH100D50
C513,C514,C713,C714	CEGA101M16
C511,C512,C711,C712,C907	CEHAZA101M25
C909	CEHAZA101M25
C905	CENA100M50
C505,C506,C509,C510	CENA101M25
C705,C706,C709,C710	CENA101M25
C563,C564,C566,C568-C572	CKSQYB103K50

Mark	No.	Description	Part No.
	C765,C766,C771-C774		CKSQYB103K50
	C507,C508,C559,C560		CKSQYB104K25
	C707,C708,C759,C760		CKSQYB104K25
	C916,C917		CKSQYB104K25
	C501,C502,C523,C524		CKSQYB473K50
	C527,C528,C537,C538		CKSQYB473K50
	C541,C542,C551,C552		CKSQYB473K50
	C555,C556,C701,C702		CKSQYB473K50
	C723,C724,C727,C728		CKSQYB473K50
	C737,C738,C741,C742		CKSQYB473K50
	C751,C752,C755,C756,C908		CKSQYB473K50
	C910-C912		CKSQYB473K50
	C565,C567,C767-C770		CKSRYB103K50
	C503,C504,C703,C704,C902	(1000μF/16V)	PCH1122
	C906,C914,C915 (1000μF/16V)		PCH1122
	C521,C522,C525,C526 (100μF/25V)		PCH1126
	C721,C722,C725,C726 (100μF/25V)		PCH1126
	C535,C536,C539,C540 (220μF/25V)		PCH1128
	C549,C550,C553,C554 (220μF/25V)		PCH1128
	C735,C736,C739,C740 (220μF/25V)		PCH1128
	C749,C750,C753,C754 (220μF/25V)		PCH1128
	C903,C904 (220μF/25V)		PCH1128
	C515-C518,C715-C718 (47μF/10V)		RCH1139

## RESISTORS

	R503,R504,R703,R704	RDM1/2P3901F
	R543,R544,R739,R740	RDM1/2P51R0F
	R561,R562	RDR1/4PM1201F
	R560,R563,R753,R754	RDR1/4PM2401F
	R559,R564,R751,R752	RDR1/4PM4701F
	R521-R524,R545,R546	RN1/10SE1001D
	R717,R718,R723,R724	RN1/10SE1001D
	R745,R746	RN1/10SE1001D
	R515,R516,R709-R712	RN1/10SE1201D
	R529,R530,R725,R726	RN1/10SE1501D
	R525,R526,R721,R722	RN1/10SE1801D
	R541,R542,R737,R738	RN1/10SE2702D
	R517-R520,R713-R716,R903	RN1/10SE3601D
△	R505-R508,R531-R534	RS1/10S510J
△	R537-R540,R705-R708	RS1/10S510J
△	R727-R730,R733-R736	RS1/10S510J
	Other Resistors	RS1/10S□□□J

## OTHERS

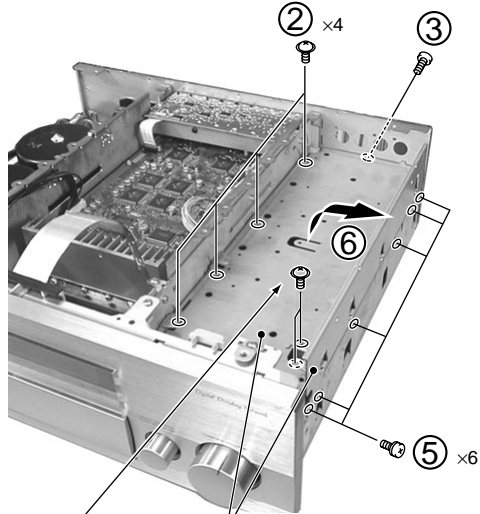
J902	CONNECTOR ASSY 14P	ADX7271
JA501,JA502,JA701,JA702	1P PIN JACK	AKB7102
902	HEAT SINK	ANH7100
CN901	FFC CONNECTOR	SLW15S-1C7
901	PCB BINDER	VEF1040
	BUS LINE B	VNF1113

## **I** AUDIO B ASSY SEMICONDUCTORS

	IC1001,IC1002	AD7564BR
	IC603-IC606,IC803-IC806	NJM2114D-D
△	IC1003	NJM7812FA
	IC607,IC608,IC807,IC808	OP275GP
	IC601,IC602,IC801,IC802	PCM1704U-J

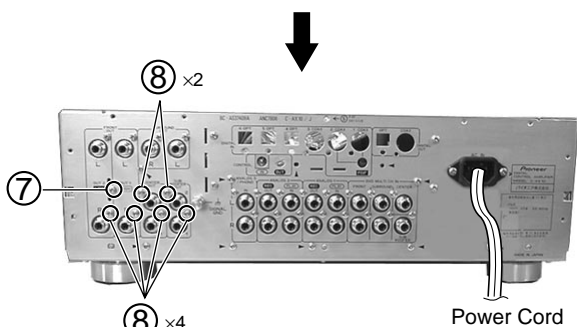
■ AUDIO B ASSY

① Remove the AUDIO A ASSY.

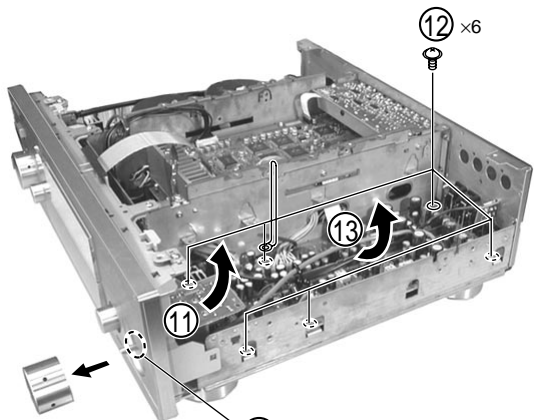


Remove the Sub Chassis and Side Frame A together.

④ x2  
Remove a PCB Holder after removing two screws.

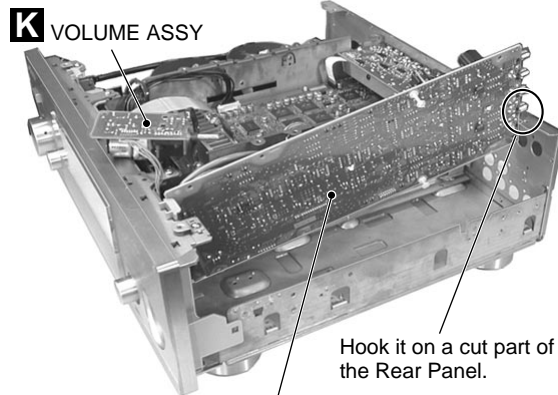


Power Cord



⑩ Remove a Nut.  
Loosen two screws and remove a Rotary Knob L.

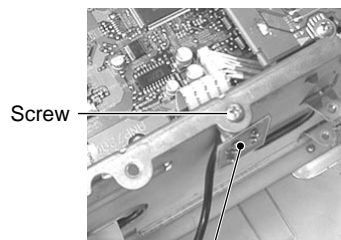
⑭ Stand the AUDIO B ASSY and diagnose it.  
(AUDIO B ASSY works even if removes the AUDIO A ASSY.)



I AUDIO B ASSY

**Caution:**

- Fix the SG ASSY to the suitable place with a screw (for earth).
- Reconnect FFC to the DSP ASSY after removing it once.

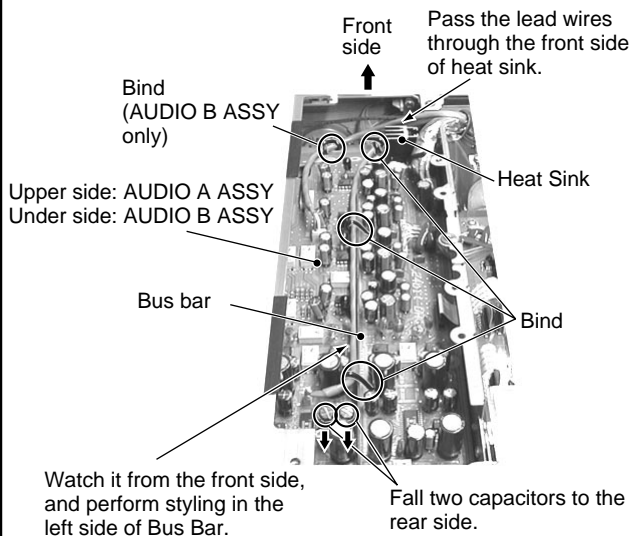


Screw

D SG ASSY

● Styling in installation  
(AUDIO A and AUDIO B ASSYS)

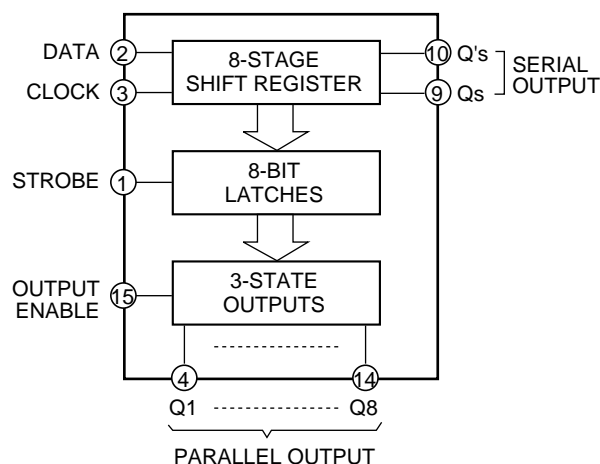
**Caution:** Perform styling if possible to under side.  
(do not seem to rise to upper side)



## ■ BU4094BCFV (DSP ASSY : IC2101, IC2107, IC2108, IC2118)

### • Port Expander

#### • Block Diagram



#### • Truth Table

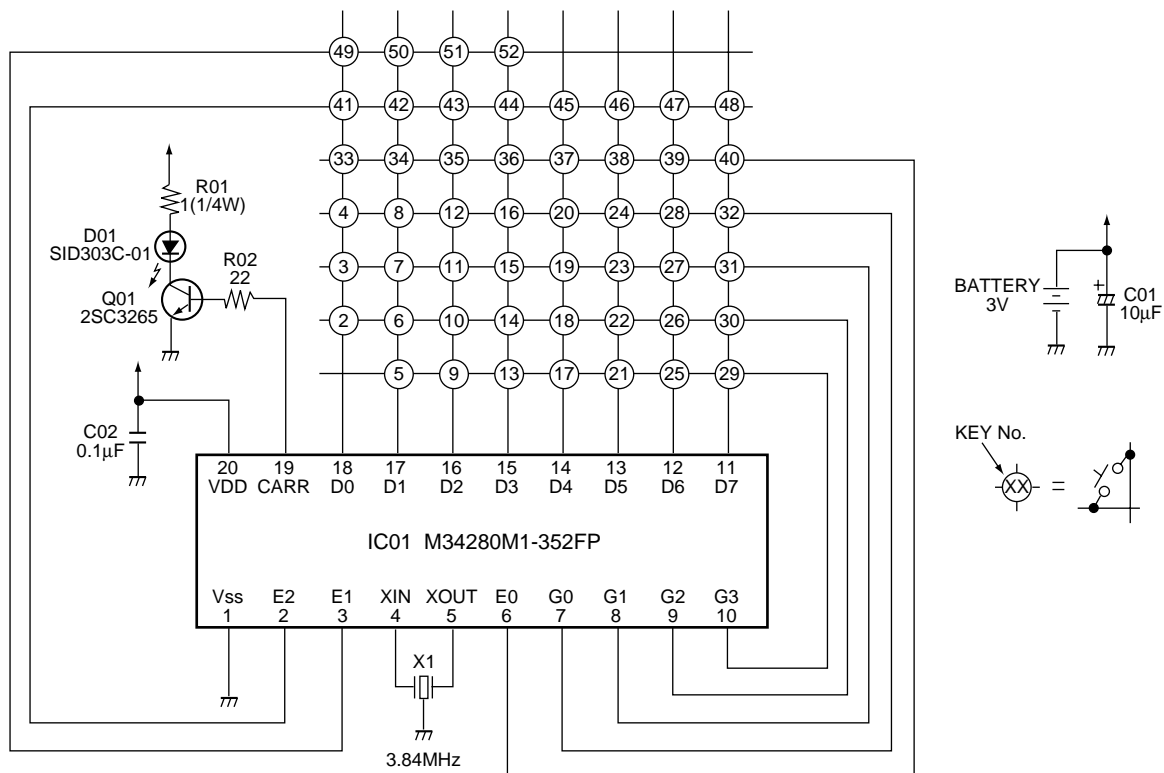
CLOCK	OUTPUT ENABLE	STROBE	DATA	PARALLEL OUTPUTS		SERIAL OUTPUTS	
				Q1	Qn	Qs	Q's
↑	L	X	X	Z	Z	Qs	No Chg.
↓	L	X	X	Z	Z	No Chg.	Qs
↑	H	L	X	No Chg.	No Chg.	Q7	No Chg.
↑	H	H	L	L	Qn-1	Q7	No Chg.
↑	H	H	H	H	Qn-1	Q7	No Chg.
↓	H	X	X	No Chg.	No Chg.	No Chg.	Qs

X : Don't Care  
Z : High Impedance

#### • Pin Function

No.	Mark	Pin Name	I/O	Pin Function
1	STROBE_	STB	I	Strobe input (IC2102 pin 23)
2	SERIAL IN	DATA	I	Serial data input (IC2102 pin21)
3	CLOCK	CLOCK	I	Serial clock input (IC2102 pin 22)
4	Q1	INPUT SEL 1	O	INPUT selector 1
5	Q2	INPUT SEL 2		INPUT selector 2
6	Q3	INPUT SEL 3		INPUT selector 3
7	Q4	192KHz	O	192kHz playback H: PDIF 192kHz signal
8	VSS	VSS	-	VSS
9	QS	QS	O	Connect to pin 2 (DATA) of IC2118
10	QS'	QS'	O	Not used
11	Q8	HI-BIT	O	Hi-bit playback H: Hi-bit playback
12	Q7	REC SEL 3	O	REC selector 3
13	Q6	REC SEL 2		REC selector 2
14	Q5	REC SEL 1		REC selector 1
15	OUTPUT ENABLE	OE	I	Chip enable input (IC2102 pin 28)
16	VDD	VDD	-	VDD

### 7.3.2 Schematic Diagram



**SWITCHES**

KEY No.	NAME
2	: DIGITAL NR
3	: Hi-bit
4	: MID-NIGHT
5	: DIRECT
6	: SOUND MEMORY A
7	: SOUND MEMORY B
8	: SOUND MEMORY C
9	: MEMO
10	: M1
11	: M2
12	: M3
13	: M4
14	: M5
15	: M6
16	: M7
17	: M8
18	: DIGITAL IN 1
19	: DIGITAL IN 2
20	: DIGITAL IN 3
21	: DIGITAL IN 4
22	: DIGITAL IN 5
23	: DIGITAL IN 6
24	: ANALOG1
25	: ANALOG2
26	: ANALOG3

KEY No.	NAME
27	: DVD
28	: 2ch/multi ch
29	: DIMMER
30	: CH LEVEL +
31	: CH LEVEL -
32	: CH SELECT
33	: VOL +
34	: VOL -
35	: MUTING
36	: SYSTEM
37	: NETWORK
38	: CHECK
39	: TEST TONE
40	: ▲
41	: ◀
42	: ▶
43	: ▼
44	: ENTER
45	: REMOTE ON/OFF
46	: BALANCE - L
47	: BALANCE - R
48	: INPUT GAIN
49	: ALL
50	: FRONT
51	: CENTER
52	: SURR.

CLICK HERE TO **DOWNLOAD** THE COMPLETE MANUAL

- Thank you very much for reading the preview of the manual.
- You can download the complete manual from: [www.heydownloads.com](http://www.heydownloads.com) by clicking the link below



- Please note: If there is no response to CLICKING the link, please download this PDF first and then click on it.

CLICK HERE TO **DOWNLOAD** THE COMPLETE MANUAL