

# Service Manual

Notebook Computer

CF-18

**TOUGHBOOK**

This is the Service Manual for  
the following areas.  
W ...for PCSC

**Model No. CF-18JHU80TW**

**⚠ WARNING**

This service information is designed for experienced repair technicians only and is not designed for use by the general public. It does not contain warnings or cautions to advise non-technical individuals of potential dangers in attempting to service a product. Products powered by electricity should be serviced or repaired only by experienced professional technicians. Any attempt to service or repair the product or products dealt with in this service information by anyone else could result in serious injury or death.

**Panasonic®**

© 2006 Matsushita Electric Industrial Co., Ltd. All rights reserved.  
Unauthorized copying and distribution is a violation of law.

CLICK HERE TO **DOWNLOAD** THE COMPLETE MANUAL

- Thank you very much for reading the preview of the manual.
- You can download the complete manual from: [www.heydownloads.com](http://www.heydownloads.com) by clicking the link below



- Please note: If there is no response to CLICKING the link, please download this PDF first and then click on it.

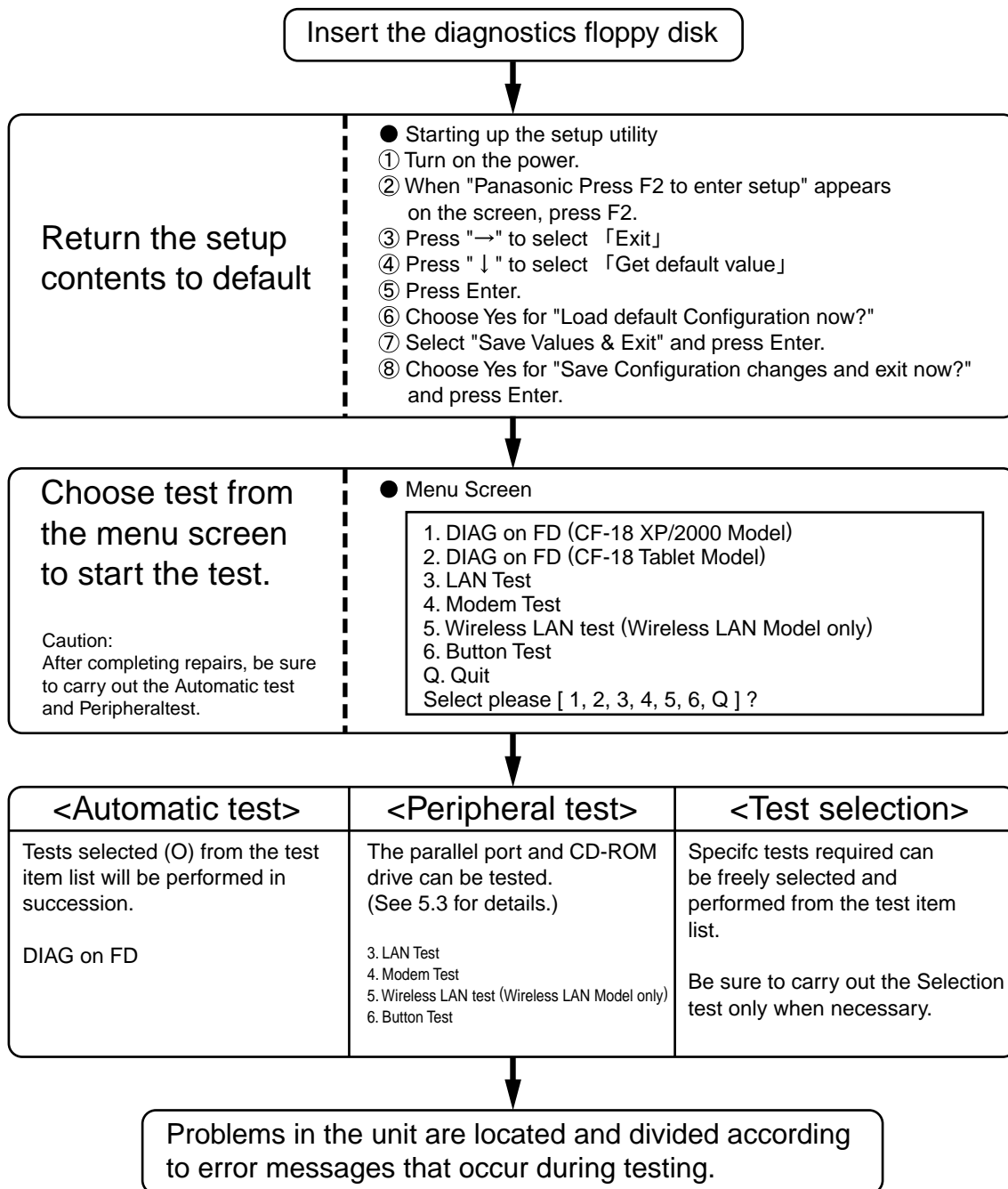
CLICK HERE TO **DOWNLOAD** THE COMPLETE MANUAL

# 5 Self Diagnosis Test

Floppy disk is Included for the self-diagnostic tests that should be performed before using this product.  
Important notice

1. System password  
If the password function has been turned on, you will need to ask the user for the password before performing the self-diagnostics.
2. FDD test  
Performing the FDD test will erase the contents of the floppy disk you insert into the drive. Use a formatted disk that has no contents or whose contents are not required. This product has a password function. However, if this function is turned on, the self-diagnostics tests will not work.

## 5.1. Outline of Self Diagnostic Tests



- Remove the I/O PCB.  
Screw<O>: DFHE5025XA  
<P>: DFHE5058ZB  
<Q>: DRSB2+5FKL

## 7.10. Removing LED PCB and Switch PCB

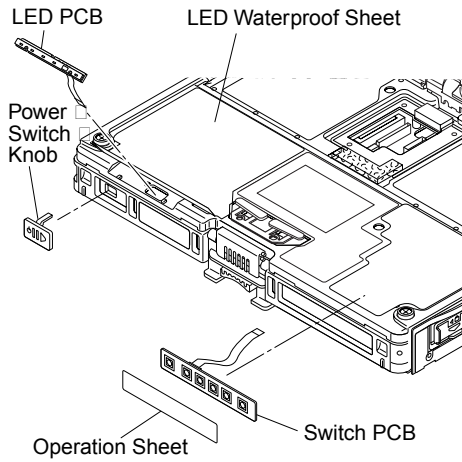


Figure 14

- Remove the LED Waterproof Sheet.
- Remove the LED PCB.
- Remove the Switch PCB.
- Remove the Power Switch.

## 7.11. Removing the CPU Heat Plate and Lithium Battery

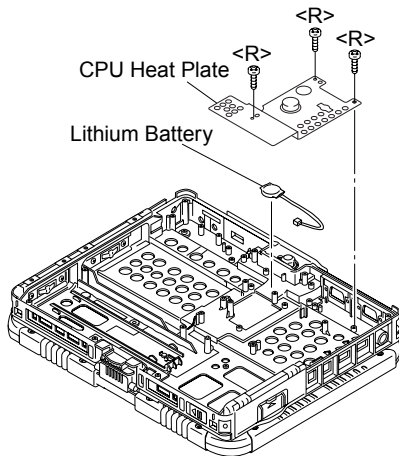


Figure 15

- Remove the three Screws. <R>
- Remove the CPU Heat Plate.
- Remove the Lithium Battery.  
Screw<R>: DFHE5025XA

## 7.12. Removing the Display unit

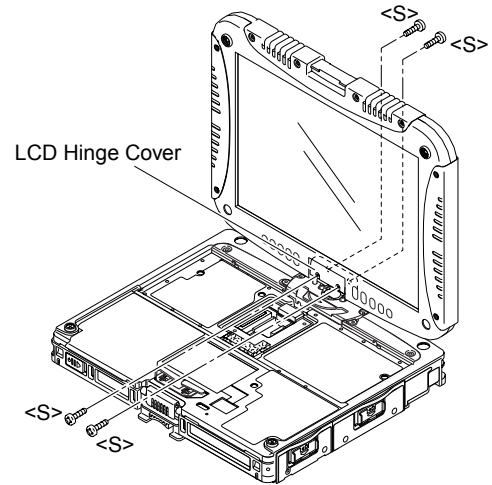


Figure 16

- Remove the four Screws. <S>
- Remove the LCD Hinge Cover.

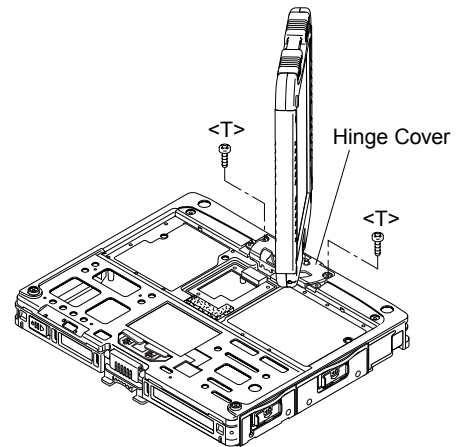


Figure 17

- LCD is half-rotated. Removes the two Screws. <T>
- Remove the Hinge Cover.

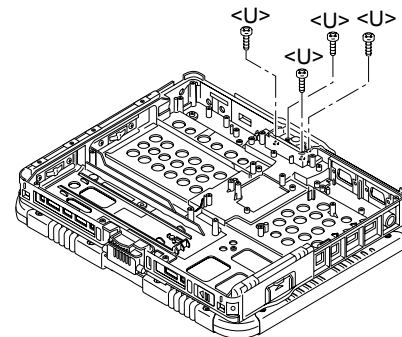



Figure 18


- Remove the four Screws. <U>
- Remove the Display Unit.  
Screw<S>: DFHE5025XA  
<T>: DRSB2+5FKL  
<U>: DXYN4+J8FNL

# 9 Replacement Parts List

**Note: Important Safety Notice**

Components identified by  mark have special characteristics important for safety. When replacing any of these components, use only manufacturer's specified parts.

**CF-18JHU80TW**

REF.NO. and AREA	PART NO.	DESCRIPTION	RTL	Q'TY
<b>Main Block Unit</b>				
E1	DL3U1B471AAA	PCB, MAIN	RTL	1
E2	DL3U2B471AAA	PCB, AUDIO	RTL	1
E3	DL3U3B471AAA	PCB, I/O	RTL	1
E4	DL3U1B482AAA	PCB, PAD	RTL	1
E5	DL3U2B482AAA	PCB, SWITCH	RTL	1
E6	DL3U3B482AAA	PCB, LED	RTL	1
E11	DL3U4B482AAA	PCB, PORT	RTL	1
E12	DL3UPB237HAA	PCB, BLUETOOTH	RTL	1
E14	DL3U11490AAA	PCB, WIDE AREA ANTENNA	RTL	1
E14-1	DFJS834YA	GPRS CABLE, GRAY		1
E16	DL3U31490AAA	PCB, BT-LAN2 ANTENNA	RTL	1
E16-1	DFJS837YA	LAN MAIN CABLE, BLACK		1
E16-2	DFJS835YA	BT CABLE, BLUE		1
E17	DL3U41490AAA	PCB, LAN2 ANTENNA	RTL	1
E17-1	DFJS836YA	LAN SUB CABLE, WHITE		1
E18	N2EABEC00006	TOUCH PAD		1
E19	DFJS827YA	CABLE, MODEM		1
E20	DFJS828YA	CABLE, LAN		1
E22	DFJK08T024DB	FFC, SW		1
E24	DFJK10T053DB	FFC, LED		1
E25	DFJK12T034DB	FFC, PAD		1
E26	DFJK24T034DB	FFC, IO		1
E27	DFJK40T072CB	FFC, AUDIO		1
E28	 NOGB1J000018	INVERTER		1
E29	DFJS923YA	CABLE, LCD TS		1
E32	N3CAYYY00001	HDD		1
E33	DFWV08A0076	LCD UNIT ASS'Y		1
E33-1	DL3DW0180AAA	LCD ASS'Y		1
E33-1-1	A2CA00000056	LCD BACKLIGHT, CCFL		1
E33-1-2	DFHM0290ZA	REFLECTION ANGLE		1
E33-5	DXHM0042ZA	SCREW		4
E33-6	DFHR3C08ZA	LCD BACK DAMPER		1
E33-7	DFHR3B64ZA	LCD SIDE CUSHION A		2
E33-8	DFHR3506YA	LCD SIDE CUSHION C		2
E33-9	DFHR3507YA	LCD SIDE CUSHION D		1
E33-30	DFHR3453YA	LCD BACK CUSHION SIDE		3
E33-31	DFHR3570YA	LCD BACK CUSHION		1
E33-32	DFHR3571YA	LCD BACK CUSHION S		2
E33-33	DFHR3612ZA	LCD PWB SPACER		1
E33-34	DFHR3647YA	SPACER SHEET		2
E33-35	DFHR3648ZA	HOLDER SHEET B		2
E34	N2ABAJ000001	KEYBOARD, US		1
E35	N5HAZ0000013	MDC MODEM		1
E36	N5HZC0000013	WIRELESS LAN MODULE		1
E40	DFJK12U043DB	FFC, BT		1
E41	DFJK50T038DB	FFC, RF		1
E42	K1YYZZ000058	CARD BUS SOCKET		1

C 291			
C 292			
C 293			
C 311			
C 312			
C 313			
C 315			
C 318			
C 321			
C 322			
C 326			
C 336			
C 345			
C 346			
C 349			
C 350			
C 351			
C 354			
C 361			
C 362			
C 363			
C 364			
C 365			
C 366			
C 367			
C 368			
C 377			
C 382			
C 383			
C 384			
C 388			
C 389			
C 391			
C 393			
C 394			
C 395			
C 399			
C 400			
C 430			
C 601			
C 607			
C 629			
C 635			
C 636			
C 50	F1G1E103A062	CAPACITOR, 25V, 0.01 $\mu$ F	28
C 166			
C 168			
C 169			
C 171			
C 174			

R 2 R 15 R 16	ERJ2RKF27R4X	RESISTOR, 1/16W, 27.4Ω	3
R 4 R 17 R 18 R 35 R 36	ERJ2RKF54R9X	RESISTOR, 1/16W, 54.9Ω	5
R 5	ERJ2RKF39R2X	RESISTOR, 1/16W, 39.2Ω	1
R 6	ERJ2GEJ151X	RESISTOR, 1/16W, 150Ω	1
R 11 R 437 R 438	ERJ3GEY0R00V	RESISTOR, 1/16W, 0Ω	3
R 12 R 43	ERJ2RKF2000X	RESISTOR, 1/16W, 200Ω	2
R 13 R 14 R 27 R 29 R 31 R 32	ERJ2GEJ560X	RESISTOR, 1/16W, 56Ω	6
R 23 R 636 R 690 R 712 R 731	ERJ3GEYJ100V	RESISTOR, 1/16W, 10Ω	5
R 24 R 732	ERJ2RKF1001X	RESISTOR, 1/16W, 1KΩ	2
R 25	ERJ2RKF2001X	RESISTOR, 1/16W, 2KΩ	1
R 26 R 348 R 609 R 612 R 613 R 749	ERJ2GEJ562X	RESISTOR, 1/16W, 5.6KΩ	6
R 28	ERJ2GEJ750X	RESISTOR, 1/16W, 75Ω	1
R 33 R 39	ERJ2RKF2210X	RESISTOR, 1/16W, 221Ω	2
R 34 R 40 R 42	ERJ2RKF1000X	RESISTOR, 1/16W, 100Ω	3
R 37 R 38 R 62 R 231	ERJ2RKF24R9X	RESISTOR, 1/16W, 24.9Ω	4
R 41 R 110 R 111 R 112 R 113	ERJ2GE0R00X	RESISTOR, 1/16W, 0Ω	59

CLICK HERE TO **DOWNLOAD** THE COMPLETE MANUAL

- Thank you very much for reading the preview of the manual.
- You can download the complete manual from: [www.heydownloads.com](http://www.heydownloads.com) by clicking the link below



- Please note: If there is no response to CLICKING the link, please download this PDF first and then click on it.

CLICK HERE TO **DOWNLOAD** THE COMPLETE MANUAL