

# **Service Manual**

## **(LS70)**

**LG Electronics**

CLICK HERE TO **DOWNLOAD** THE COMPLETE MANUAL

- Thank you very much for reading the preview of the manual.
- You can download the complete manual from: [www.heydownloads.com](http://www.heydownloads.com) by clicking the link below



- Please note: If there is no response to CLICKING the link, please download this PDF first and then click on it.

CLICK HERE TO **DOWNLOAD** THE COMPLETE MANUAL

### 1-6. Read this first

Before you go to the checkout guide, be sure to read this section.

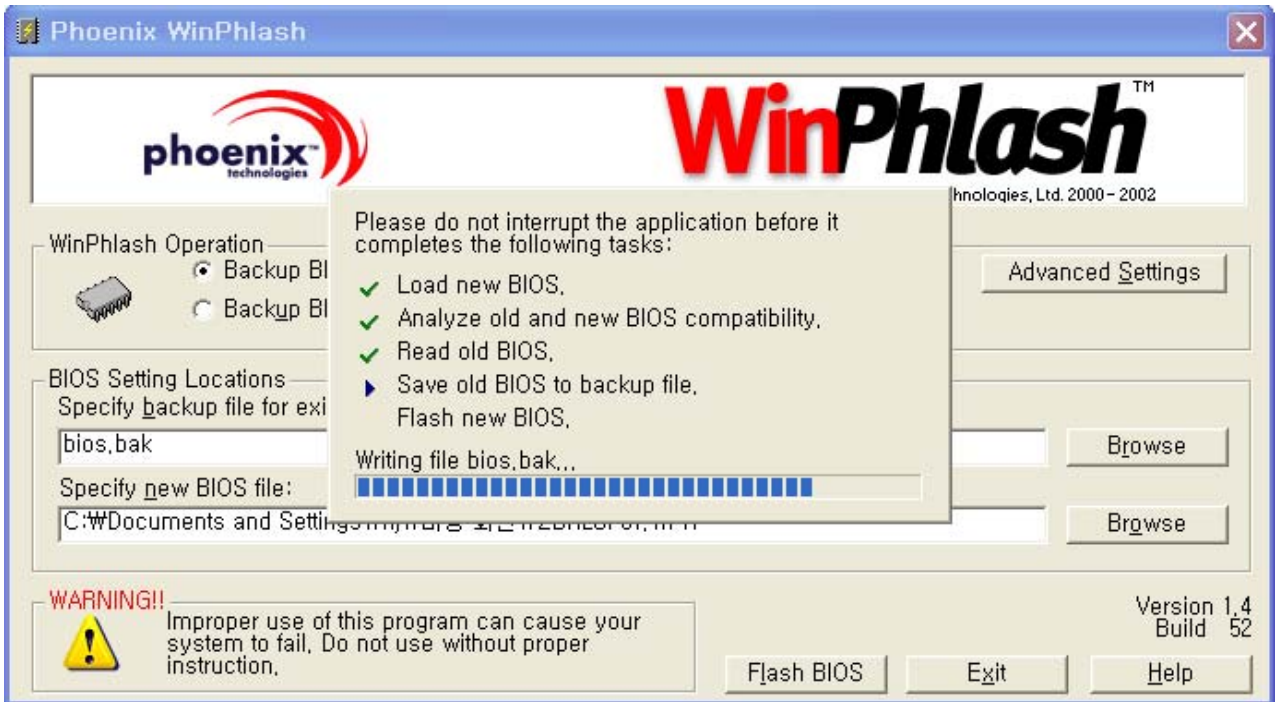
#### **Important Notes**

- Only trained personnel certified by LG should service the computer.
- Read the entire FRU removal and replacement page before replacing any FRU.
- Use new nylon-coated screws when you replace FRUs.
- Be extremely careful during such write operations as copying, saving, formatting.  
Drives in the computer that you are servicing sequence might have been altered. If you selected an incorrect drive, data or programs might be overwritten.
- Replace FRUs only for the correct mode.
- When you replace a FRU, make sure the model of the machine and the FRU part number are correct by referring to the FRU parts list.
- A FRU should not be replaced because of a single, irreproducible failure. Single failures can occur for a variety of reasons that have nothing to do with a hard ware defect, such as cosmic radiation, electrostatic discharge, or software errors.
- Consider replacing a FRU only when a problem recurs. If you suspect that a FRU is defective, clear the error log and run the test again. If the error does not recur, do not replace the FRU.
- Be careful not to replace a non-defective FRU.

#### **■ What to do first**

You must fill out the record form first.

During the warranty period, the customer may be responsible for repair costs if the computer damage was caused by misuse, accident, modification, unsuitable physical or operating environment, or improper maintenance by the customer. The following list provides some common items that are not covered under warranty and some symptoms that might indicate that the system was subjected to stress beyond normal use. Before checking problems with computer, determine whether the damage is covered under the warranty by referring to the following :



8. After the completion, 'System BIOS was successfully updated' appears on the screen, then the computer restarts.
9. After the restart, make sure the system BIOS is updated.
10. If your computer does not restart automatically, turn off your computer and then turn it back on by pressing power button.

## Ch4. Symptom-to-part index

### ■ Numeric error codes

Symptom / Error	FRU or action, in sequence
0200 Fixed disk failure (The hard disk is not working)	1.Reset the hard-disk drive. 2.Load Setup Defaults in BIOS Setup Utility. 3.Hard-disk drive. 4.System board.
0210 Stuck Key error	1.Check the keyboard if it is pressed. 2.Replace the keyboard.
0211 Keyboard error	Run interactive tests of the keyboard and the auxiliary input device.
0212 Keyboard Controller Failed	System board.
0220 Monitor type error - Monitor type does not match the one specified in CMOS.	Load Setup Defaults in BIOS Setup Utility.
0230 System RAM error - System RAM Failed at offset.	1.DIMM 2.System board
0231 Shadow RAM error - Shadow RAM failed at offset	System board
0232 Extended RAM error - Extended RAM Failed at address line	1. DIMM 2. System board
0250 System battery error – System battery is dead	Replace the backup battery and run BIOS Setup Utility to reset the time and date.

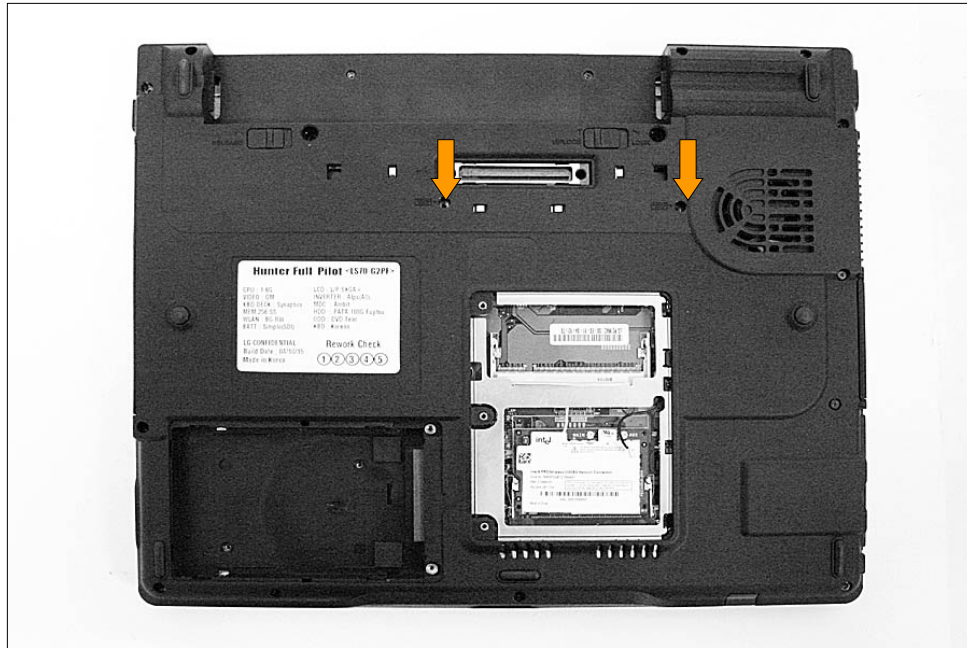
## Ch5. Removing and replacing a part

### ■ 1040 Keyboard

Remove the following parts in order before replacing this part

1. Battery Pack(1010) 2. Hard Disk Drive(1020) 3. W/L LAN Card(1030)

1. Remove 2 screws.



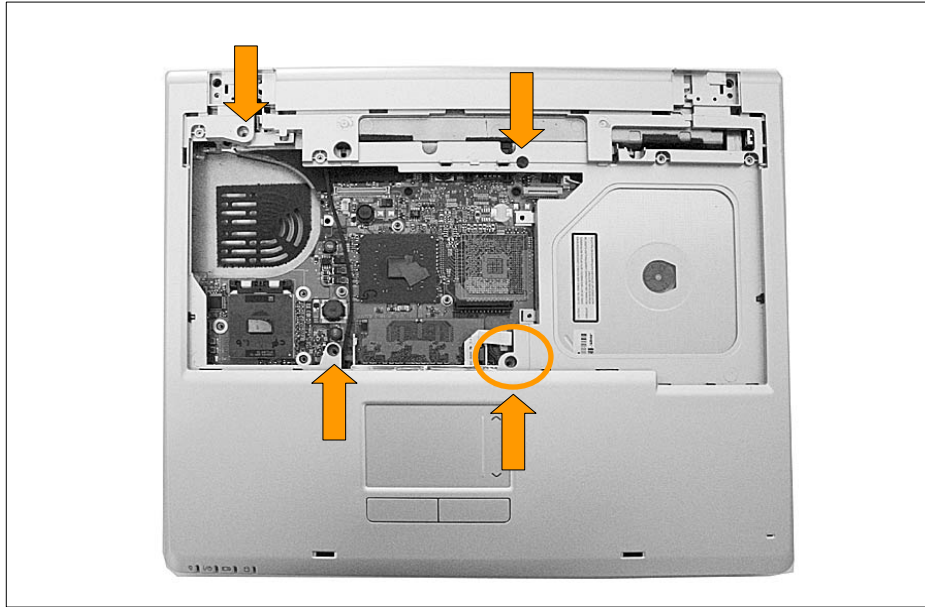
No.	FRU No.	Specification	Qty
1	1SZZBA4097A	M2.5 X L6.5	2

2. To remove 3 hooks, insert a (-) type screwdriver into a hook located at the lower end of keyboard, and pull it up.

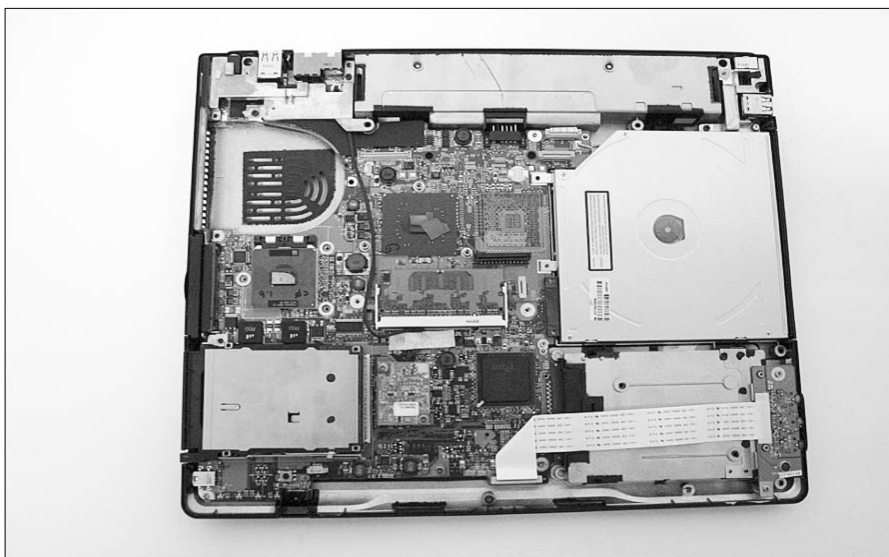
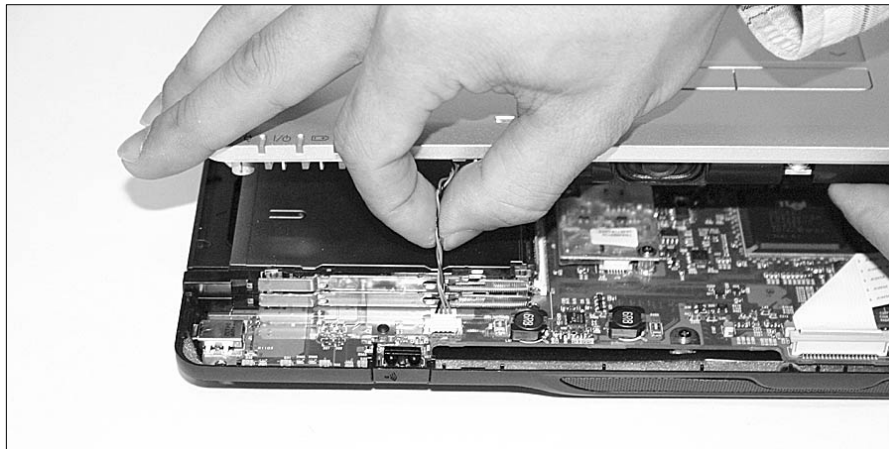


## Ch5. Removing and replacing a part

3. Remove 4 screws from Key Deck. Disconnect TouchPad cable and speaker cable.



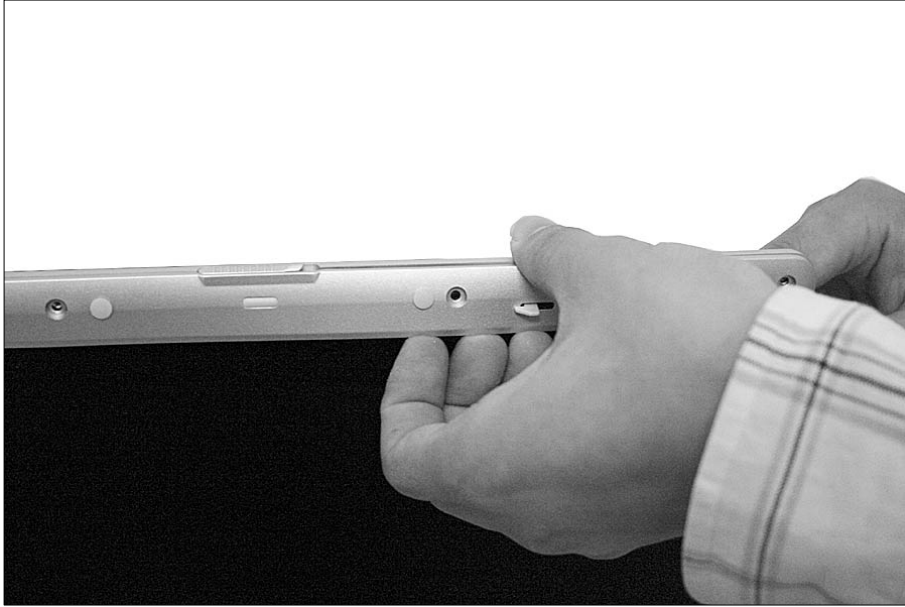
No.	FRU No.	Specification	Qty
1	1SZZBZ4014A	M2.0 X L5.0	4



## Ch5. Removing and replacing a part

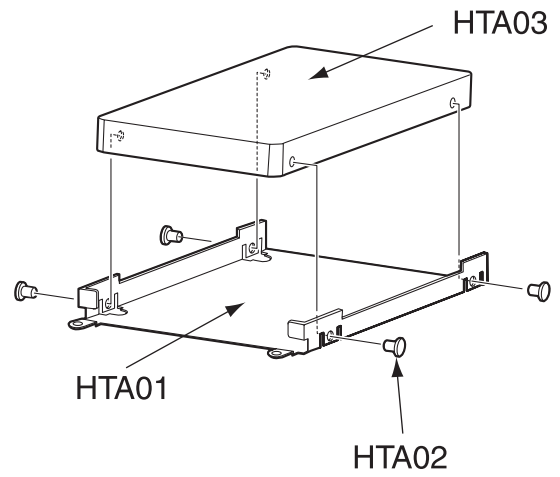
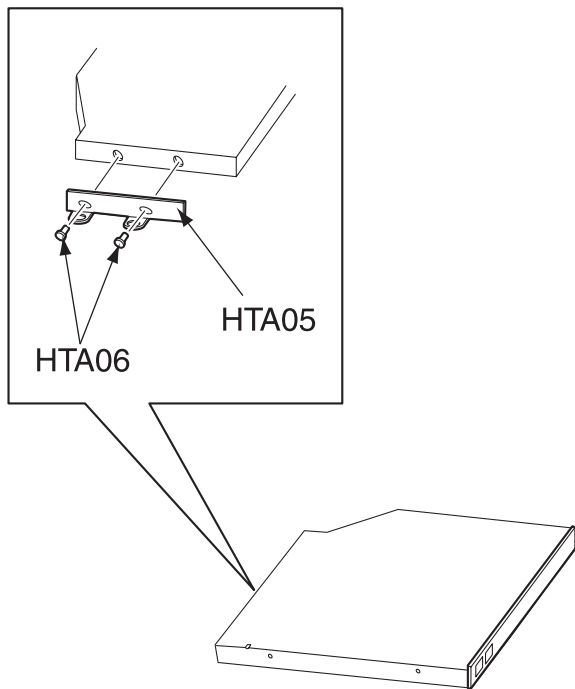
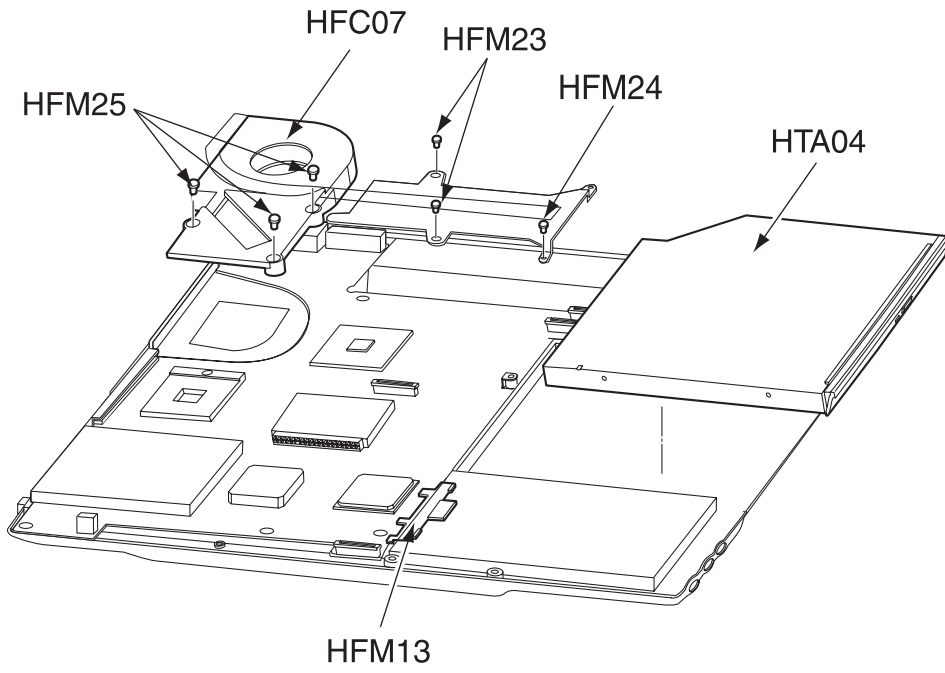
---

2. Disassemble the LCD front. The front hook located on the middle of LCD upper and lower end.  
Be careful of the direction when removing because it is connected from inside out.



## Ch6. Part lists

Location	Part Number	Specification	Remarks
HFM19	3850BZ9A87B	ATI Label, X600 128M	ATI LABEL
HFM20	3850BF4304A	POP LABEL LS70 PM IPS FOR DOMESTIC	POP LABEL
HFM20	3850BF4305A	POP LABEL LS70 PM SXGA+ FOR DOMESTIC	POP LABEL
HFM20	3850BF4306A	POP LABEL LS70 PM GLARE FOR DOMESTIC	POP LABEL
HFM20	3850BF4307A	POP LABEL LS70 PM XGA FOR DOMESTIC	POP LABEL
HFM20	3850BF4308A	POP LABEL LS70 GM FOR DOMESTIC	POP LABEL
HFM20	3850BF4304B	POP LABEL LS70 PM IPS FOR EXPORT	POP LABEL
HFM20	3850BF4305B	POP LABEL LS70 PM SXGA+ FOR EXPORT	POP LABEL
HFM20	3850BF4306B	POP LABEL LS70 PM GLARE FOR EXPORT	POP LABEL
HFM20	3850BF4307B	POP LABEL LS70 PM XGA FOR EXPORT	POP LABEL
HFM20	3850BF4308B	POP LABEL LS70 GM FOR EXPORT	POP LABEL
HFM21	3850BB4482A	ID LABEL for Domestic Made in Korea	ID LABEL
HFM21	3850BB4483A	ID LABEL for Export Made in Korea	ID LABEL
HFM21	3850BB4484A	ID LABEL for Export Made in China	ID LABEL
HFM22	1SZZBA4017A	screw M2.0 * L3.0	SCREW A
HFM23	1SZZBA4023A	screw M2.0 * L3.5	SCREW B
HFM24	1SZZBZ4014A	screw M2.0 * L5.0	SCREW C
HFM25	1SZZBZ4020A	screw M2.0 * L10 (Thermal block fix)	SCREW D
HFM26	1SZZBA4097A	screw M2.5 * L6.5	SCREW E
HFM27	1SZZBA4039B	screw M2.5 * L8.0 (hinge)	SCREW F



CLICK HERE TO **DOWNLOAD** THE COMPLETE MANUAL

- Thank you very much for reading the preview of the manual.
- You can download the complete manual from: [www.heydownloads.com](http://www.heydownloads.com) by clicking the link below



- Please note: If there is no response to CLICKING the link, please download this PDF first and then click on it.

CLICK HERE TO **DOWNLOAD** THE COMPLETE MANUAL