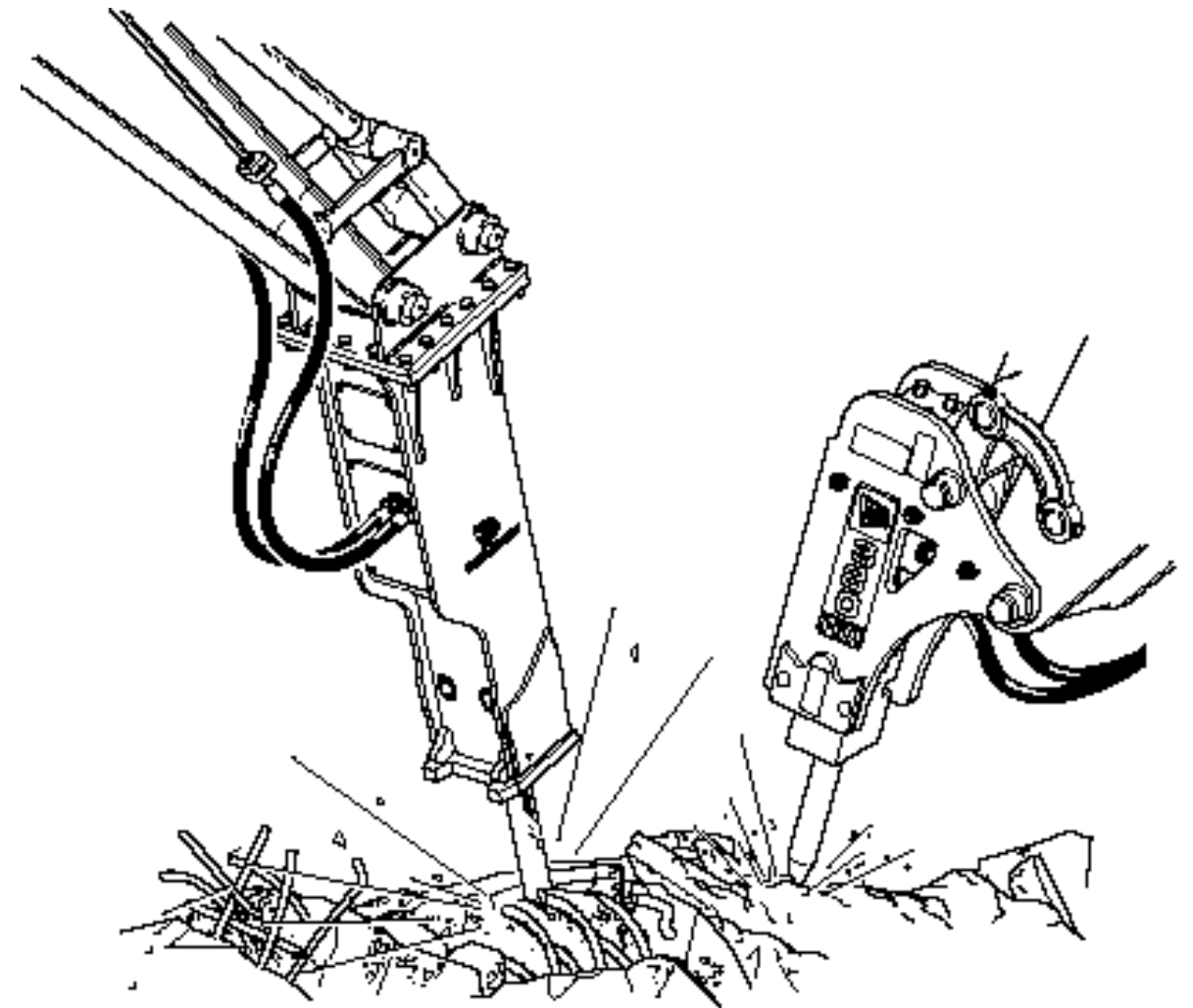

Service Manual



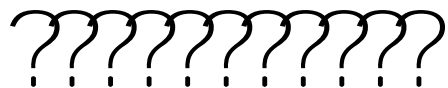
Hammermaster HM 2180, HM 1180, HM 480 and HM 380

SERVICE MANUAL : HM 2180, HM 1180, HM 480 and HM 380

332/A3098 ISSUE 1

Copyright © 2004 JCB SERVICE
All rights reserved. No part of this publication may be reproduced,
stored in a retrieval system, or transmitted in any form or by any other
means, electronic, mechanical, photocopying or otherwise, without
prior permission from JCB SERVICE.

JCB Attachments, Riverside, Rugeley, Staffordshire WS15 2WA, England
Tel: 01889 572700



332/A3098
ISSUE 1
DEC 07

CLICK HERE TO **DOWNLOAD** THE COMPLETE MANUAL

- Thank you very much for reading the preview of the manual.
- You can download the complete manual from: www.heydownloads.com by clicking the link below



- Please note: If there is no response to CLICKING the link, please download this PDF first and then click on it.

CLICK HERE TO **DOWNLOAD** THE COMPLETE MANUAL

Safety Check List (cont'd)

CAUTION

Every breaker has its own flow requirement. If the machine is not preset to deliver the correct flow for the breaker fitted, either the breaker will not function correctly or the machine may be damaged.

Whenever a breaker or hammer is fitted, it is ESSENTIAL that the engine speed is correctly preset to suit the breaker.

Have your JCB dealer reset the engine speed before using the machine with a new breaker fitted. This is a specialist job and the machine can be seriously damaged if it is not done correctly.

8-2-8-12

CAUTION

Metal Splinters

You can be injured by flying metal splinters when driving metal pins in and out. Use a soft faced hammer or drift to remove and fit metal pins. Always wear safety glasses.

INT-3-1-3

CAUTION

Take care when lifting/handling. Refer to SPECIFICATION for the attachment weight.

B-2-1-2/2

CAUTION

Equipment Limits




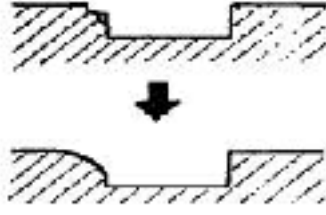
Operating the equipment beyond its design limits can cause damage. It can also be dangerous.

Do not operate the equipment outside its limits.

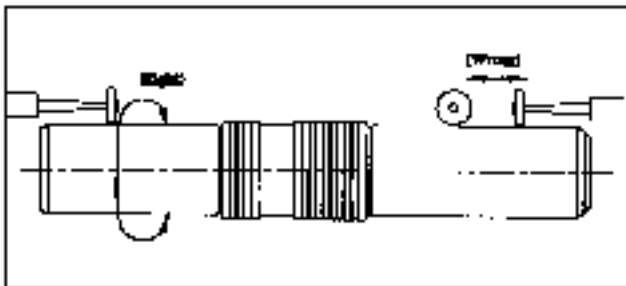
Do not try to upgrade the equipment's performance by unapproved modifications.

A-1-4-2

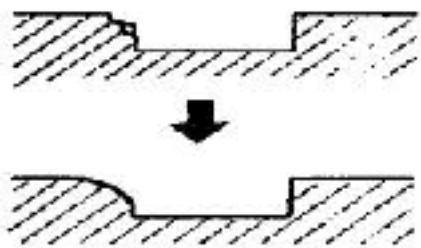
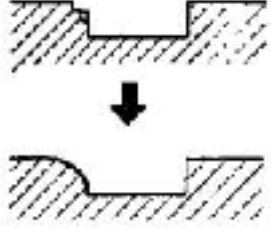
Removal of Parts & Deburring (cont.)

<p>Chipping</p>	 <p>Corner of sliding section is chipped.</p>	 <p>Finish the edge produced by polishing smoothly with an oilstone.</p>
<p>Vermin</p>	 <p>A vermin-like fault by cavitations located at the corner of a sliding part.</p>	 <p>A vermin causes galling if left uncorrected. Remove it with an air grinder and finish it smoothly with an oilstone.</p>

Piston



Correct faults at an early stage using an oilstone and emery paper.

Fault	Condition	Remedy
<p>Vertical Scratch</p>	 <p>Striped scratches caused by sliding motion of contaminated oil.</p>	 <p>Remove burrs on the surface by polishing in the circumferential direction.</p>

Automatic Greasing System

(HM2180 and HM1180 only)

Hammermaster breakers are subject to loads when operating in the harsh conditions for which they are designed. The constant impact shock, high reciprocating speeds and the dusty (or muddy) conditions demand the highest order of lubrication of wear parts. The intermittent manual greasing normally used can make this impossible to achieve.

Automatic greasing systems are available to supply a constant flow of lubrication to the critical points on the hammers, such as the lower tool bushing and the tool shank, whilst the hammer is operating.

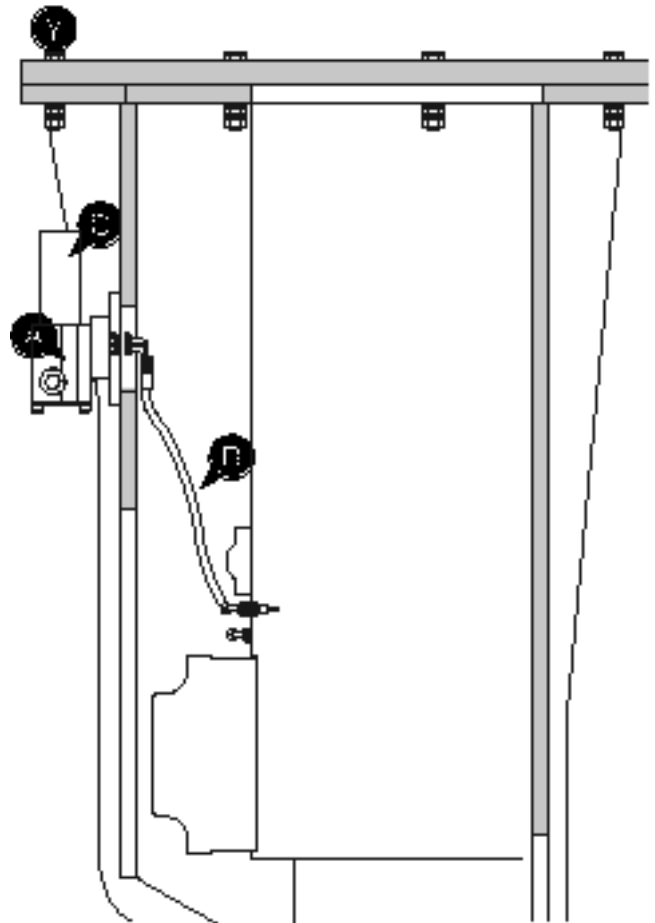
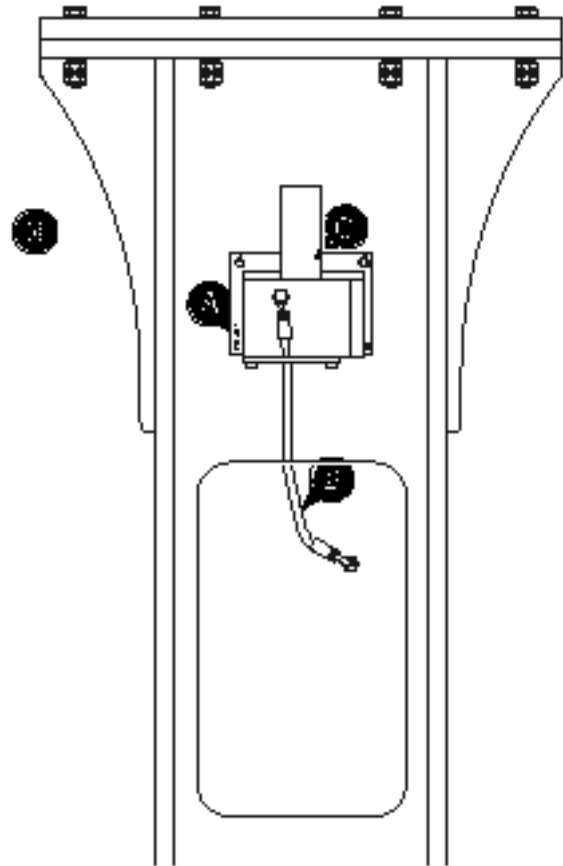
JCB Autogrease System

This system is offered as a self-contained alternative to manual greasing.

The essential features of the system are as follows:-
(see illustrations X & Y opposite)

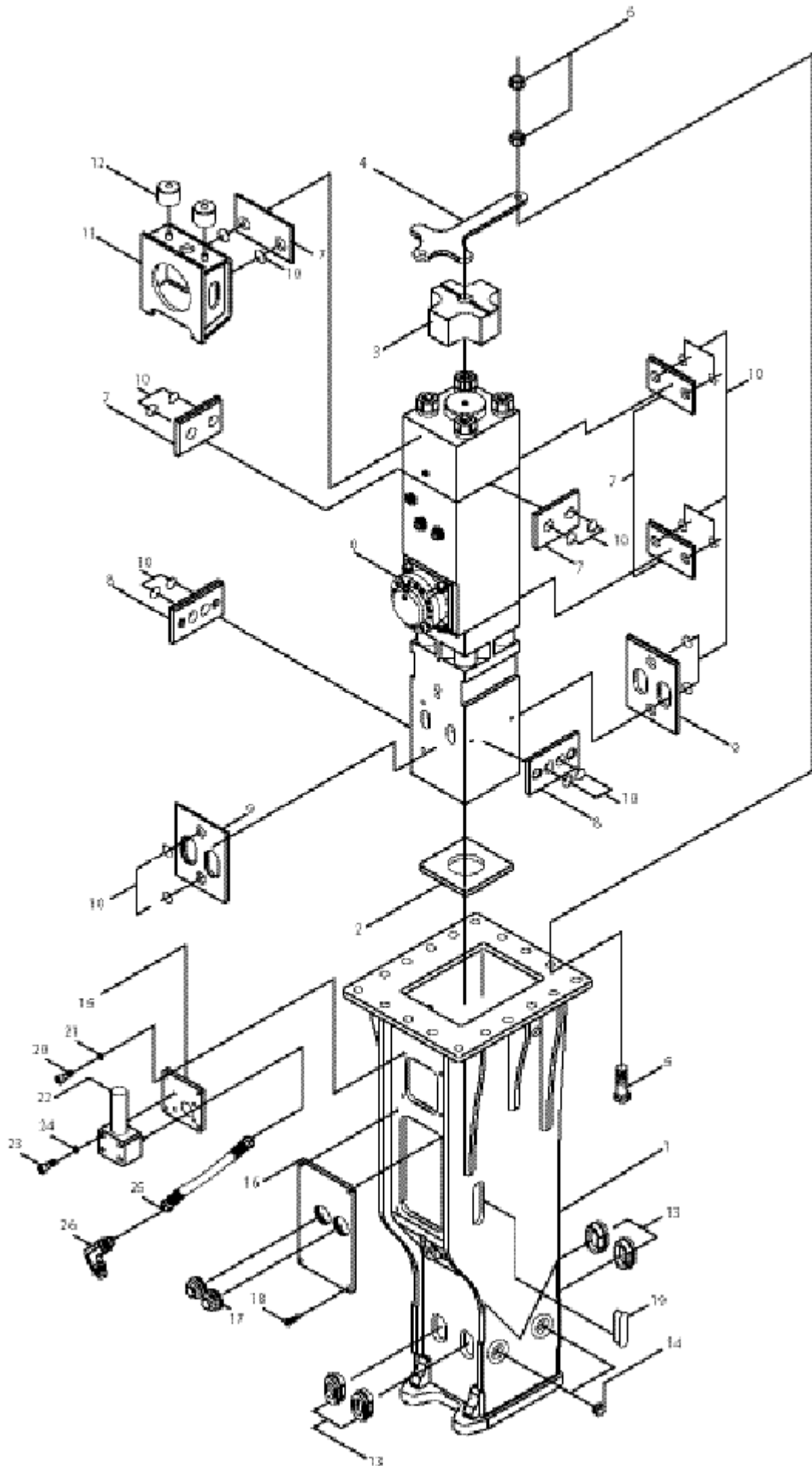
- 1 Compact self priming grease pumping unit. **A**
- 2 Unit mounted directly on the breaker housing.
- 3 Greasing unit hose **B** protected inside the breaker housing.
- 4 No tools required to change the grease cartridge **C**
(Hand tight screw fit)

see following pages for further details of the system.



C048300

Parts Illustration - Housing - HM 2180 & HM 1180



CLICK HERE TO **DOWNLOAD** THE COMPLETE MANUAL

- Thank you very much for reading the preview of the manual.
- You can download the complete manual from: www.heydownloads.com by clicking the link below



- Please note: If there is no response to CLICKING the link, please download this PDF first and then click on it.

CLICK HERE TO **DOWNLOAD** THE COMPLETE MANUAL