

Foreword

Counterbalance battery forklift is a new series product researched and developed on the basis of absorbing the advantages of the forklifts at home and abroad combining the company's introduction of advanced foreign technology to satisfy the demand of the market, and it is particularly used for loading and unloading, handling and stacking at stations, ports, freight yards, warehouses and in food, light textile industry, as well as general industrial goods, etc.

Because a wide field hoisting system, fully hydraulic steering mechanism, automatic boosting brake, new stepless speed regulator, open overhead guard and other advanced components are used in the forklift, coupled with good quality motor, battery, MOSFET electric control and a large screen LCD combination instrument, it has superior performance, convenient operation, wide vision, flexible steering, reliable braking, good performance, low noise, no pollution and nice appearance, etc.

This manual briefly introduces the technical parameters of our company's counterbalance battery forklift, the structure, working principle and operation, repair, maintenance and other elements of main components. It can help operators reasonably use the battery forklift, and make the battery forklift to give play to maximum effectiveness. We hope that operators and equipment management personnel read carefully before operating the forklift.

In use, relevant personnel should strictly abide by the provisions of the manual and the matters needing attention, and make careful use of it so that your forklifts can be in the best working state for a long term and give play to greater effectiveness.

Because parts and devices are involved in continuous improvement, relevant content of this manual will also be changed, without prior notice, please users understand. This manual is also used for the forklifts with assembly tools. Four-fulcrum battery forklift has passed the CE certification.

Note: It is strictly prohibited that users privately modify the forklift without permission!

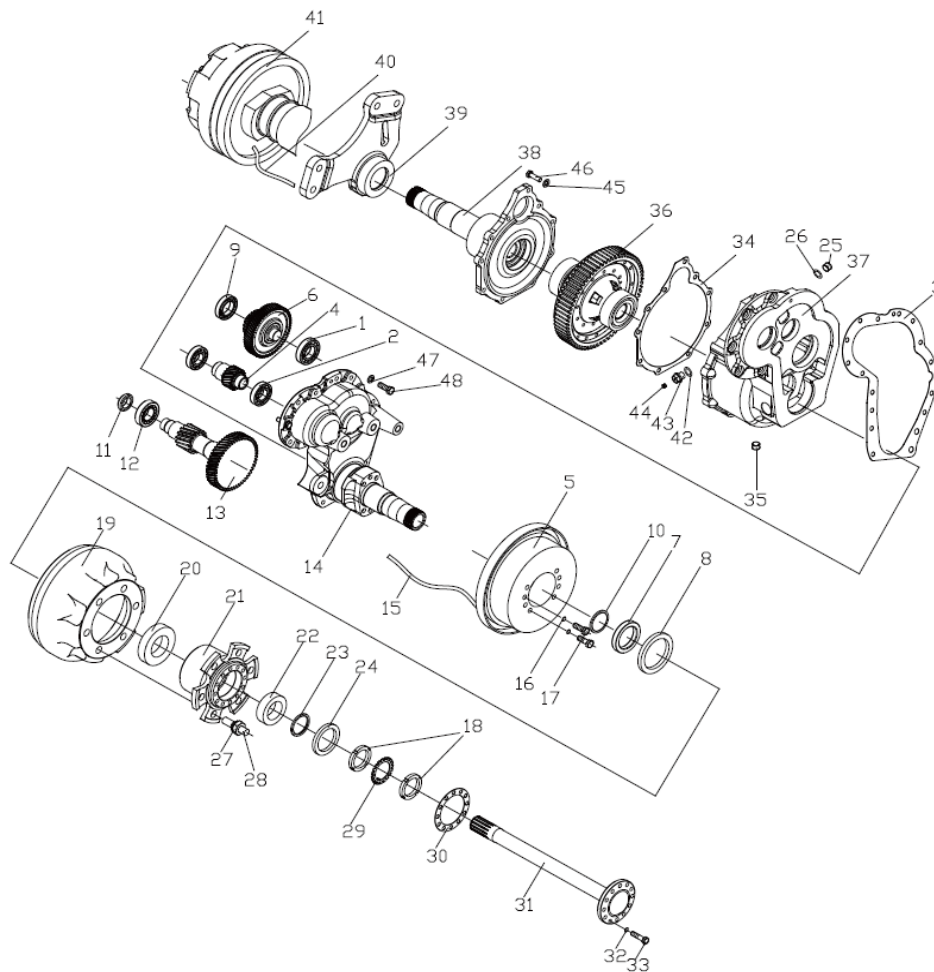
CLICK HERE TO **DOWNLOAD** THE COMPLETE MANUAL

- Thank you very much for reading the preview of the manual.
- You can download the complete manual from: www.heydownloads.com by clicking the link below



- Please note: If there is no response to CLICKING the link, please download this PDF first and then click on it.

CLICK HERE TO **DOWNLOAD** THE COMPLETE MANUAL



- | | | |
|-------------------------------|-----------------------------|-------------------------------------|
| 1. 6207 bearing | 18. Round nut | 35. Plug screw |
| 2. 6208 bearing | 19. Brake hub | 36. Differential mechanism assembly |
| 3. Paper pad | 20. Bearing | 37. Intermediate box |
| 4. Input shaft | 21. Nut | 38. Right bridge cover component |
| 5. Left brake assembly | 22. Bearing | 39. Right support plate |
| 6. Gear combination | 23. Oil seal seat | 40. Right brake zipper |
| 7. Oil seal collar | 24. Rotary shaft lip seal | 41. Right brake assembly |
| 8. Rotary shaft lip seal | 25. Plug screw | 42. Combined sealing washer |
| 9. Bearing | 26. Combined sealing washer | 43. Vent plug |
| 10. O sealing ring | 27. Bolt | 44. Ventilation plug |
| 11. Nut | 28. Sphere nut | 45. Washer |
| 12. Bearing | 29. Washer | 46. Bolt |
| 13. Gear combination | 30. Half-shaft paper pad | 47. Washer |
| 14. Left bridge box component | 31. Half shaft | 48. Bolt |
| 15. Left brake zipper | 32. Washer | 49. Bearing |
| 16. Washer | 33. Bolt | 50. O ring |
| 17. Bolt | 34. Paper pad | |

Figure 2-1 Gearbox (2.5-3.5T Zhongnan)

(2) Parking brake

Parking brake device is assembled in the wheel brake, and is composed of pull rod and push rod. Pull rod is installed on the side of primary brake shoe with pin, and the movement of the pull rod is passed through the push rod to the secondary brake shoe.

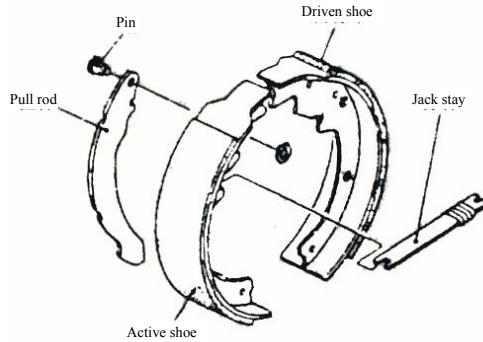


Figure 2-13 Parking brake device

(3) Clearance auto-adjusting mechanism

Clearance auto-adjusting mechanism can enable to maintain the proper clearance between the friction plate and drum brake.

Clearance auto-adjusting mechanism works only when driving in reverse.

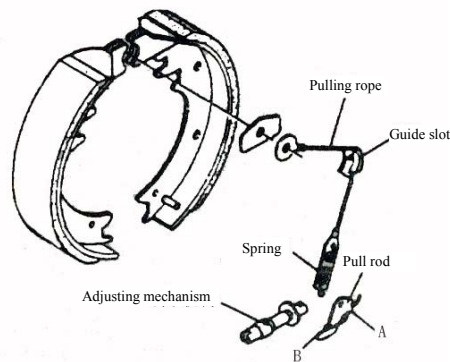
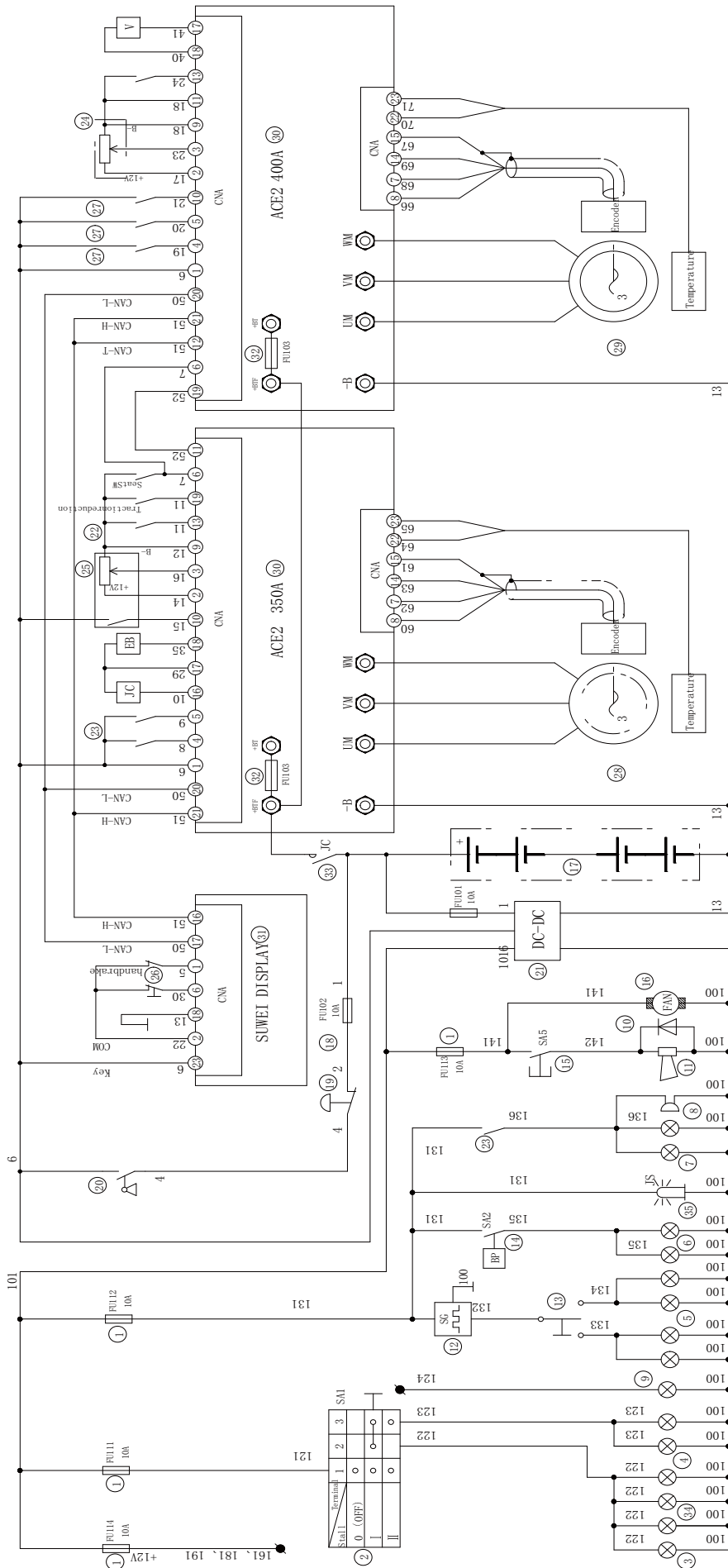


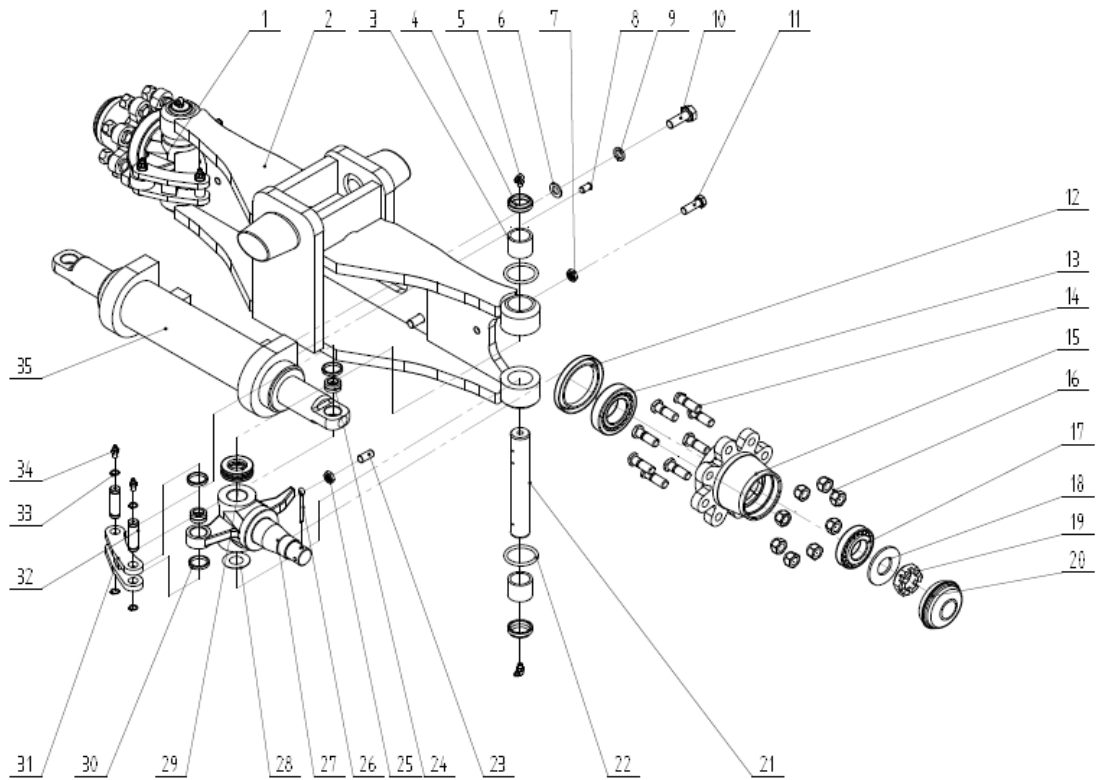
Figure 2-14

▲ Action of clearance auto-adjusting mechanism

Operate the brake when the forklift backs away, and the secondary brake shoe and the primary brake shoe contact and rotate together, so that the pull rod turns to the right around point A, as shown in Figure 2-18, when the point B is raised; after the brake is released, the pull rod turns to the left under the action of spring force, and the point B declines. When the clearance between the friction plate and brake hub becomes large, the vertical distance where the point B turns is increased, a tooth of the regulator is dialed, the adjustment lever becomes long (see Figure 2-15), and the clearance narrows accordingly. The adjusting range of the clearance is shown in the following table:



ITEM	NAME	ITEM	NAME	ITEM	NAME
13	Turn signal SW	26	Hand brake SW		
12	Flasher	25	Accelerator		
11	Horn	24	Lift POT		
10	Diode	23	Direction SW		
9	Reverse work Light	22	Seat SW	35	Alarm Lamp
8	Buzzer	21	DC converter	34	Reversewidth light
7	Reverse Light	20	Key SW	33	Main contactor
6	Brake Light	19	Emergency stop SW	32	Fuse
5	Turn light	18	Fuse	31	Display
4	Head light	17	Battery	30	Controller
3	Side light	16	Fan	29	Pump motor
2	Combination SW	15	Horn button	28	Traction motor
1	Fuse box	14	Brake SW	27	Multi-way valve
ITEM	NAME	ITEM	NAME	ITEM	NAME



- | | | |
|------------------------------------|--|---|
| 1. Left knuckle assembly | 14. Wheel hub bolt | 27. Right knuckle assembly |
| 2. Steering axle assembly | 15. Wheel hub | 28. Adjustable pad |
| 3. Needle bearing | 16. Hexagon socket set screw | 29. Single direction thrust ball bearing 198906 |
| 4. Oil seal | 17. Tapered roller bearing | 30. Bushing |
| 5. 90°neck-bent grease nipple Z1/8 | 18. Washer $\Phi 31 \times \Phi 62 \times 4$ | 31. Connecting rod |
| 6. Flat washer 14 | 19. Slotted nut M30×2 | 32. Connecting rod pin |
| 7. Nut M12 | 20. Wheel hub cover | 33. Retaining ring for shaft 16 |
| 8. Round pin $\Phi 10 \times 20$ | 21. Main pin | 34. Straight-through grease nipple M6 |
| 9. Spring washer 14 | 22. O ring | 35. Steering cylinder assembly |
| 10. Bolt M14×40 | 23. Hexagon socket set screw with cone point | |
| 11. Bolt M12×35 | 24. Centripetal knuckle bearing GE16ES | |
| 12. Oil seal | 25. Nut M12 | |
| 13. Tapered roller bearing 32209 | 26. Cotter pin 6.3×50 | |

Figure 6-2 Steering axle (2.5T)

Check the contact surface of liner plate, and if the surface is damaged or the plate thickness is less than the specified value, replace the liner plate.

The specified value of the thickness of liner plate: 4.94mm.

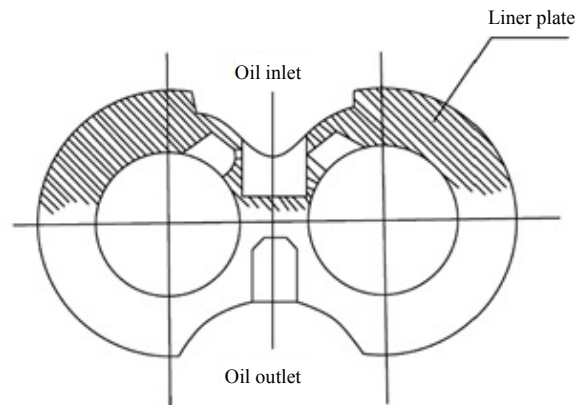


Figure 10-4

(c) Front and rear pump cover

Replace if the inner surface bushing changes in color (brown) more than 150°C.

(d) Check the driving gear and driven gear from the front and back side. If excessive wear, change a pair, and if the size D is less than the specified value, change a pair.

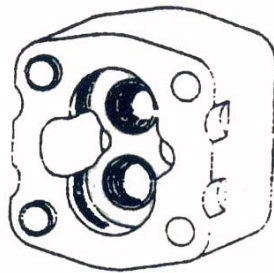


Figure 10-5

(e) According to the need, replace the seal ring, liner seal, retaining ring, oil seal, and spring collar.

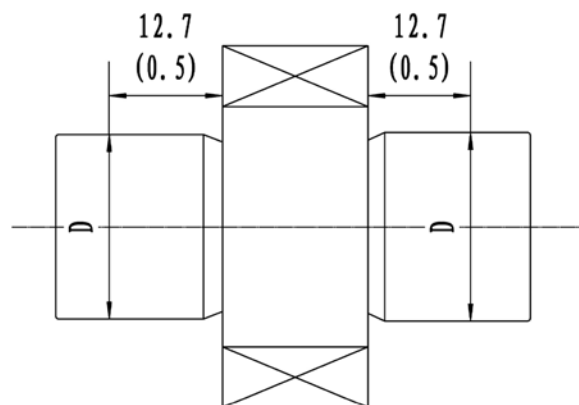


Figure 10-6

(3) Assembly

(a) Install a new seal ring and a new retaining ring onto the pump front end cover.

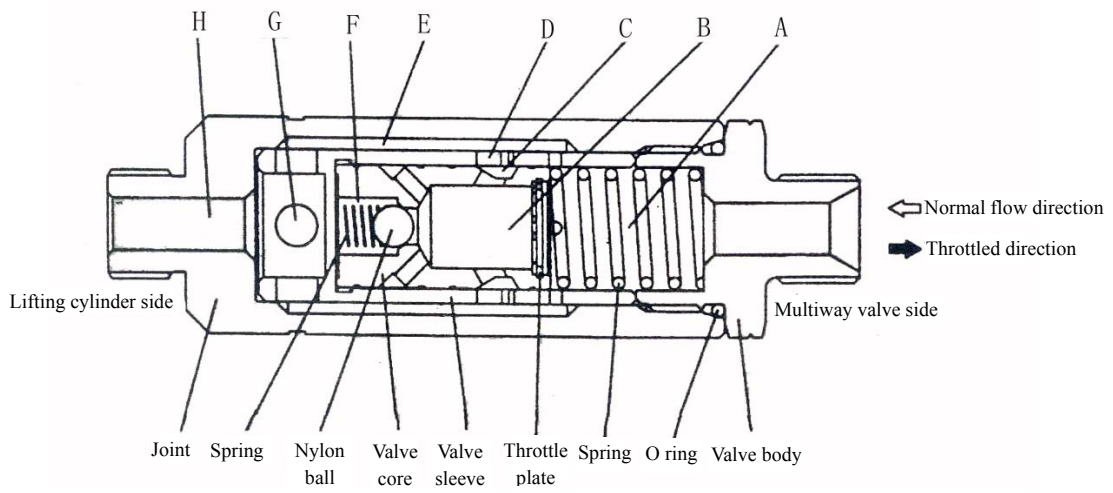


Figure 10-23

10.6 Hydraulic pipeline

The hydraulic oil pipeline of 1.5-3.5T hydraulic system is shown below

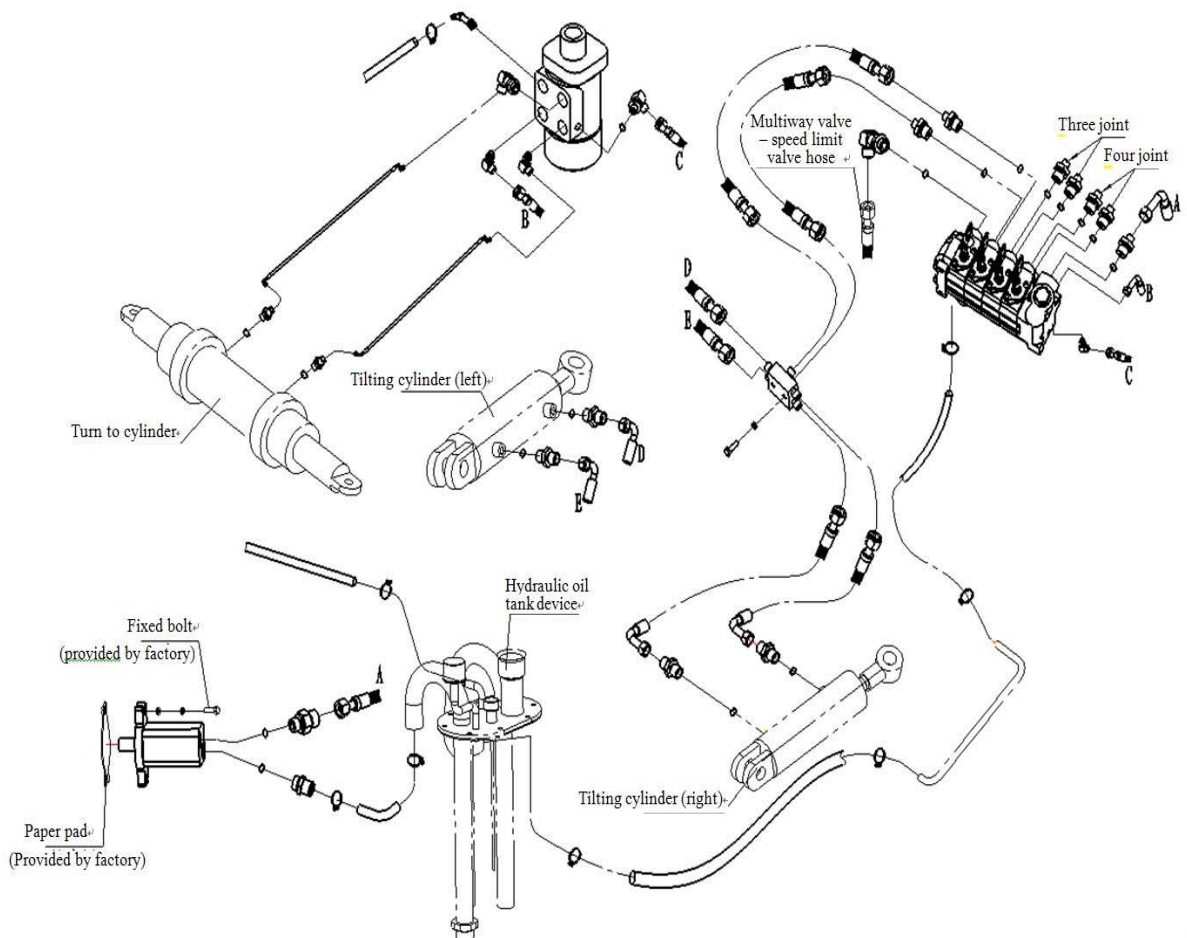


Figure 10-24 Hydraulic pipe line

CLICK HERE TO **DOWNLOAD** THE COMPLETE MANUAL

- Thank you very much for reading the preview of the manual.
- You can download the complete manual from: www.heydownloads.com by clicking the link below



- Please note: If there is no response to CLICKING the link, please download this PDF first and then click on it.

CLICK HERE TO **DOWNLOAD** THE COMPLETE MANUAL