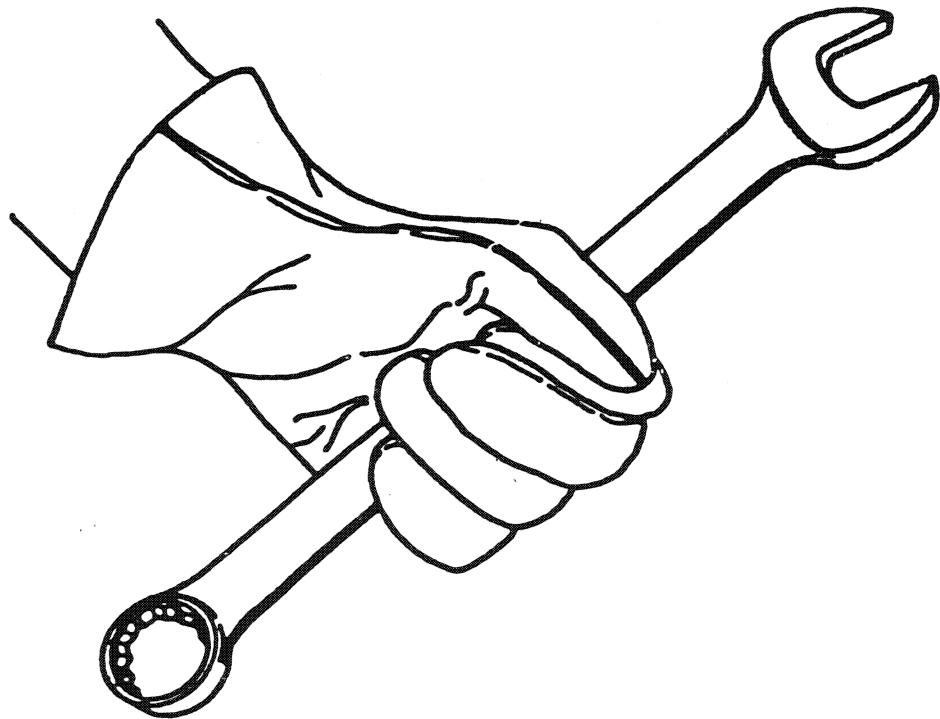


**COMPACT
EXCAVATOR**

**X
119**

SERVICE MANUAL



MELROE EUROPE

J. Huysmanslaan 59, B - 1651 LOT - BELGIUM
Tel. 02/371.68.11 - Fax. 02/371.69.00 - Telex 21.657

6570547 (8-87)

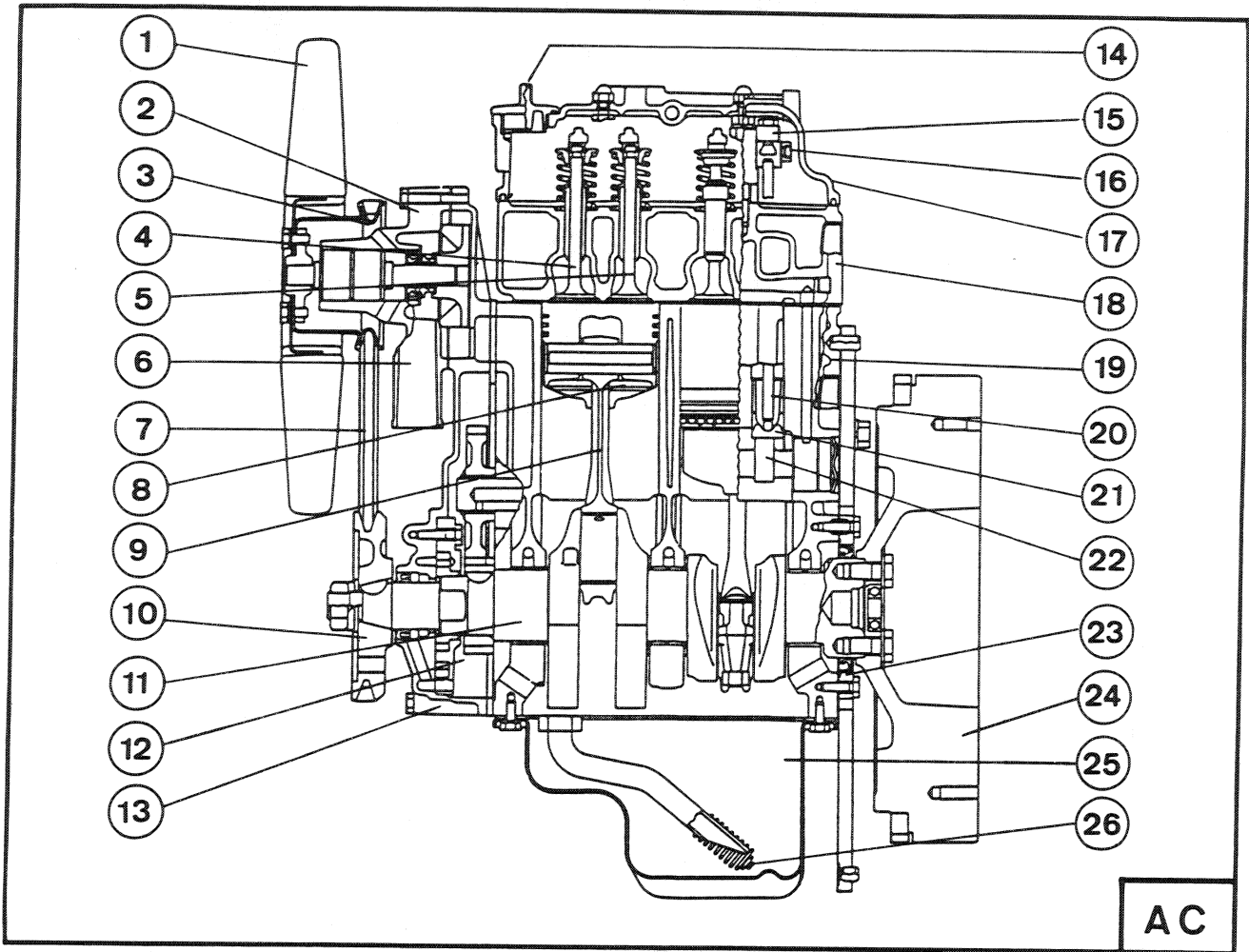
CLICK HERE TO **DOWNLOAD** THE COMPLETE MANUAL

- Thank you very much for reading the preview of the manual.
- You can download the complete manual from: www.heydownloads.com by clicking the link below

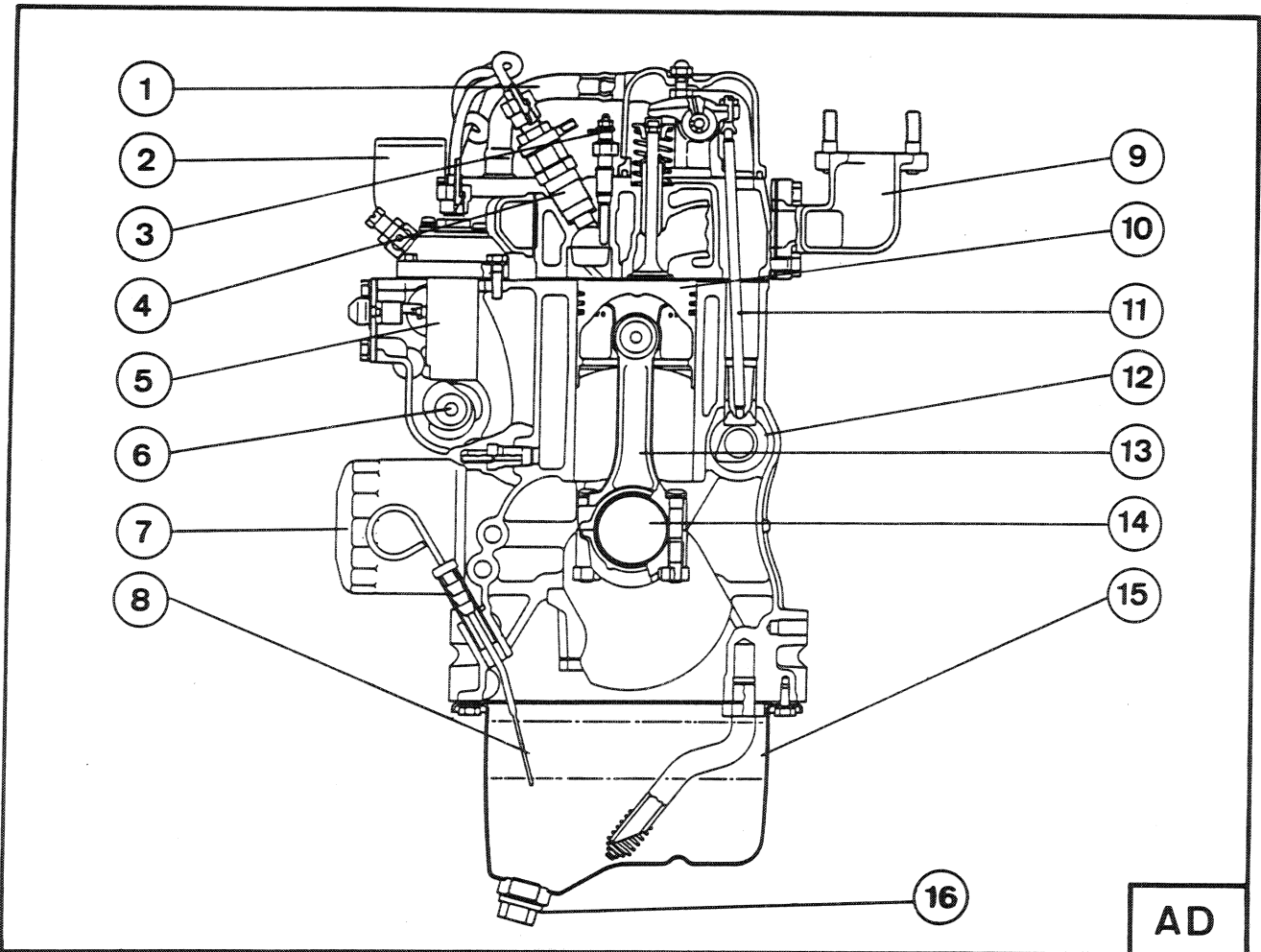


- Please note: If there is no response to CLICKING the link, please download this PDF first and then click on it.

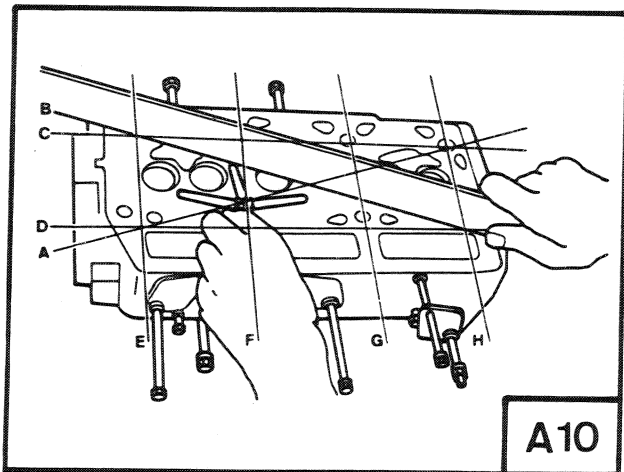
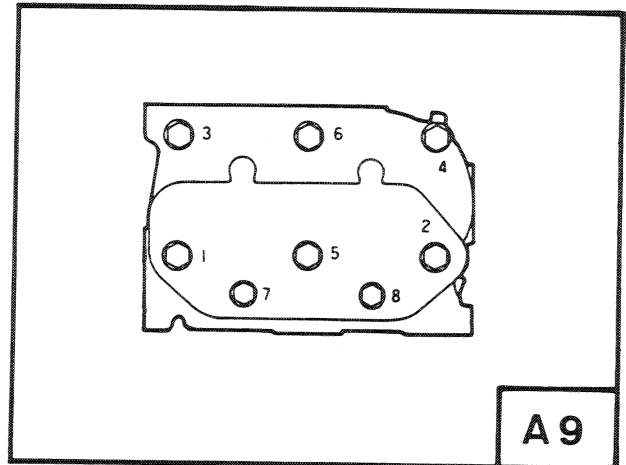
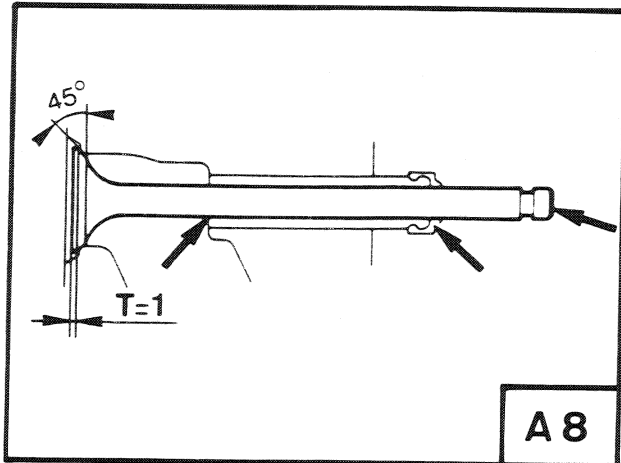
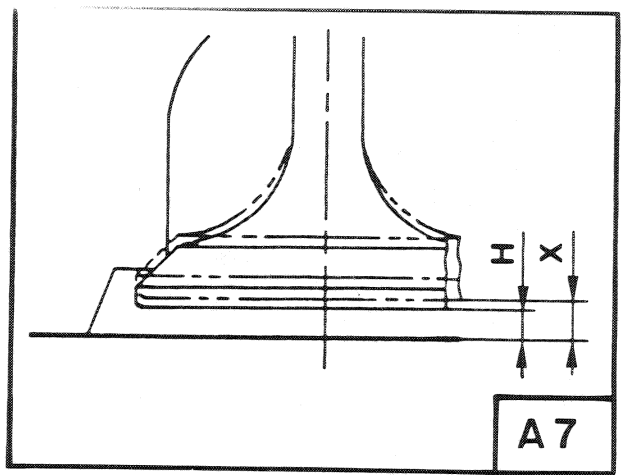
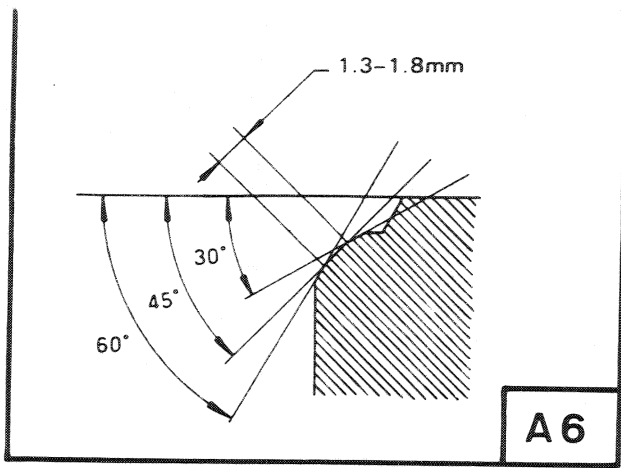
CLICK HERE TO **DOWNLOAD** THE COMPLETE MANUAL



AC



AD



1 DESCRIPTION OF CIRCUIT (Figure A32)

- 1 Filter bleed screw
- 2 Injection pump bleed screw
- 3 Pipe from pump to injector
- 4 Fuel filter (monobloc, cannot be dismantled)

2 ELECTRIC FUEL PUMP

- 5 Fuel pump prefilter cover
- 6 Electric fuel pump
- 7 Fuel prefilter
- 8 Seal
- 9 Seal

3 INJECTOR (Figure A32)


- 10 Injector return pipe lock screw
- 11 Return pipe
- 12 Seal
- 13 Injector holder body
- 14 Injector nozzle
- 15 Adjustment shim
- 16 Setting spring.

N.B.: Tightening torque of return pipe nut:

Ref. 10 2.5 to 3.0 mkg

Tightening torque of injector holder body:

Ref. 13 3.5 to 4.0 mkg

 WARNING	Stop and cool engine before adding fuel. NO SMOKING!	W-1023
----------------------------------------------------------------------------------------------------	---------------------------------------------------------	--------

1 - SCHEMATIC DIAGRAM (Figure B1)

- 1 - Warning signal (oil pressure, water temperature)
- 2 - Horn control
- 3 - Engine oil pressure and water temperature warning light
- 4 - Battery charge warning light
- 5 - Engine preheating indicator
- 6 - Work light connector (optional)
- 7 - Horn
- 8 - Starter switch
- 9 - Service hour meter
- 10 - Relay
- 11 - Time - delay relay
- 12 - Governor
- 13 - Battery
- 14 - Starter motor
- 15 - Dynamo
- 16 - Engine water temperature thermal switch
- 17 - Preheating plugs
- 18 - Fuel pump
- 19 - 8 A fuse
- 20 - Engine oil pressure switch



WARNING

Batteries contain acid which burns eyes and skin on contact. Wear goggles and protective clothing and rubber gloves to keep acid off body.

In case of acid contact, wash immediately with water for several minutes and get medical attention in case of eye contact.

1 HYDRAULIC SYSTEM

The thermal engine drives three gear pumps directly (Figure C1), each pump having its particular functions:

- Pump P1

. Right-hand travel

or

. Boom control cylinder

or

. Bucket control cylinder

. Flow rate : 15 l/min

. Service pressure 130 bars

- Pump P2

. Left-hand travel

or

. Swinging (or) sideshifting (depending on function selected)

or

. Dipper arm control cylinder

. Flow rate : 15 l/min

. Service pressure 130 bars

- Pumps P1 and P2 combined

Rock breaker option

. Flow rate : $15 \times 2 = 30$ l/min

. Service pressure 130 bars

- Pump P3

Backfilling blade

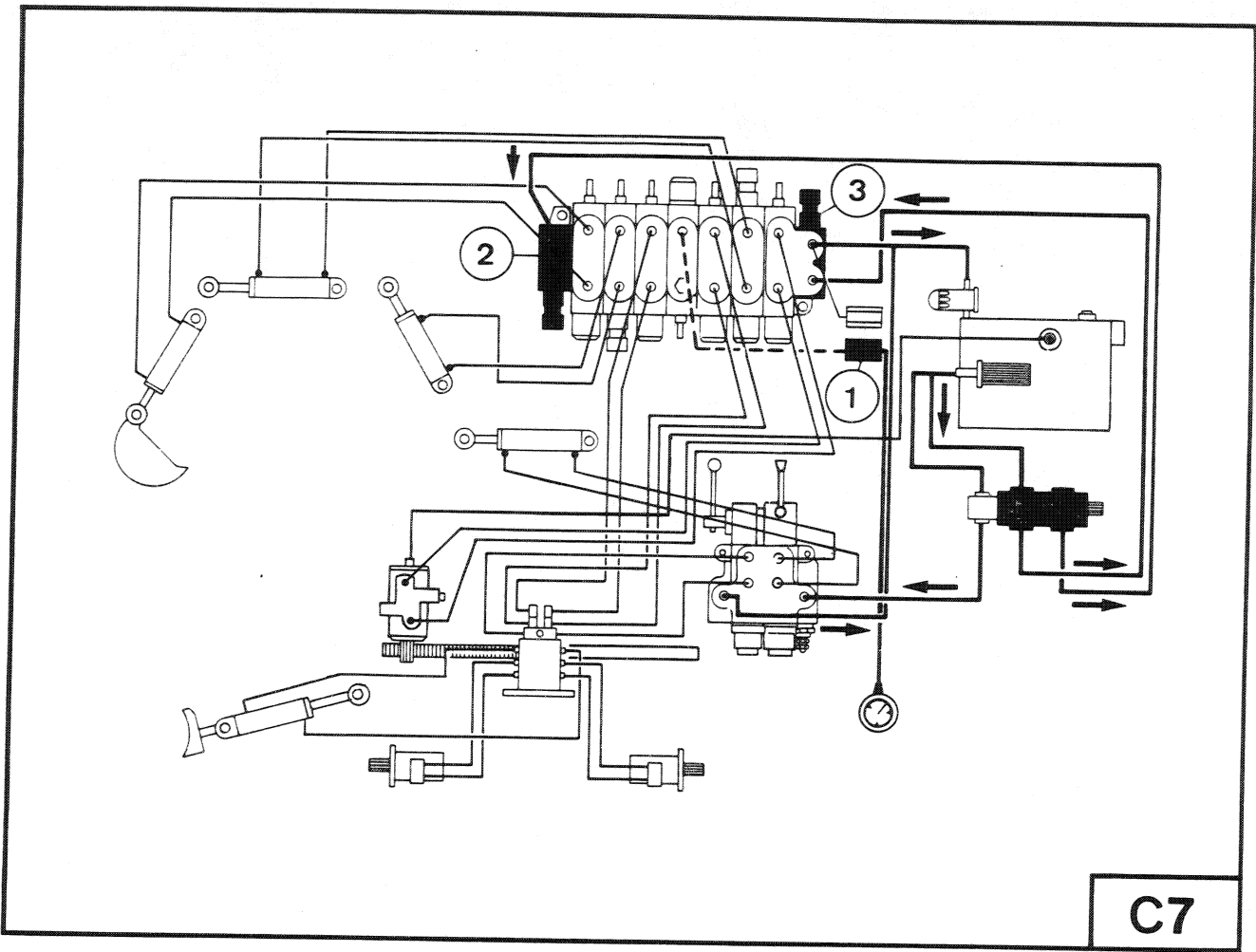
. Flow rate : 7 l/min

. Service pressure 130 bars

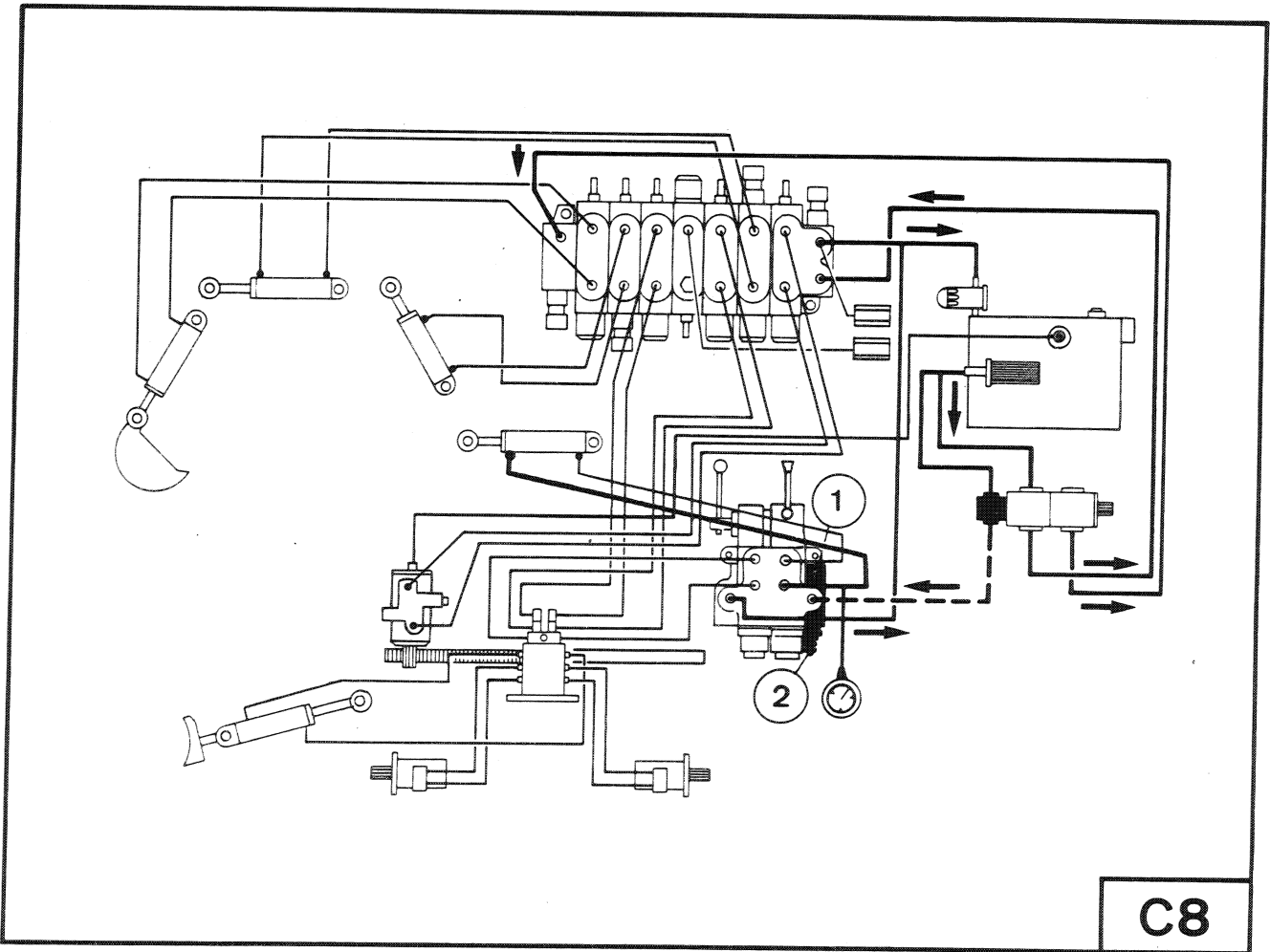
- Filter strainer on suction intake and 10 μ filter on return pipe with bypass.

- Hydraulic circuit capacity is 41 litres (hoses + storage tank).

- Recommended oil: ISO-VG 100 (for use above +30° C)
68 (for use between +30 and - 8° C)
46 (for use between +20 and -18° C)
32 (for use below -18° C).



C7



C8

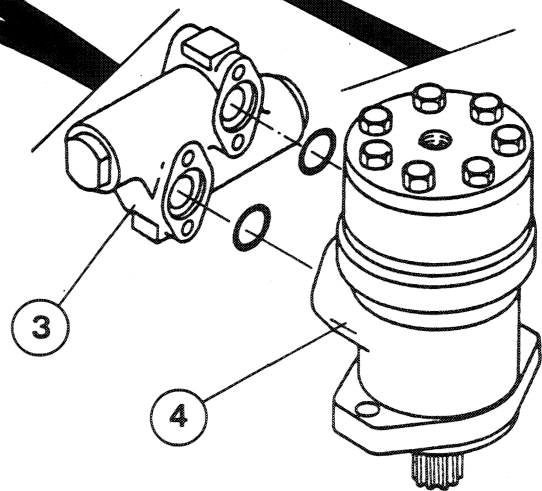
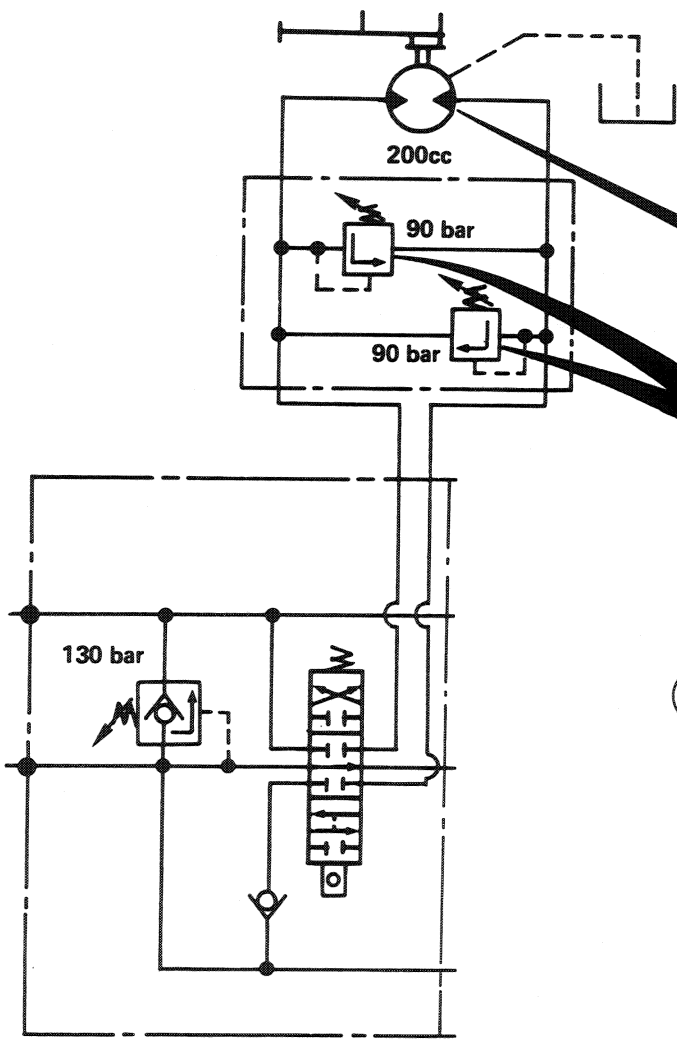
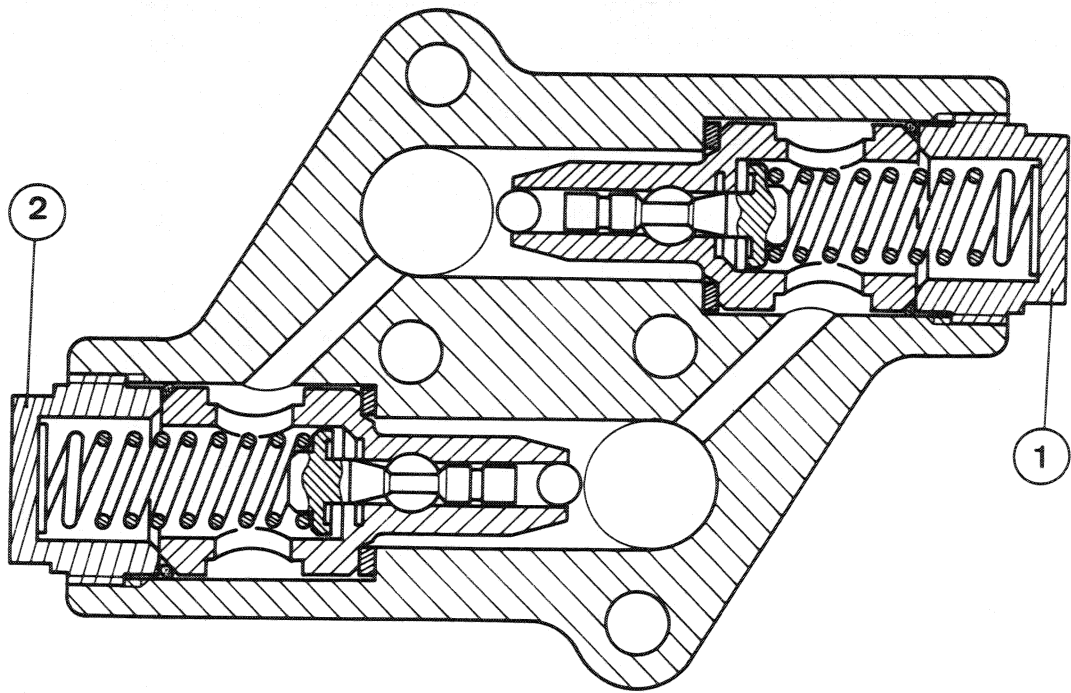
1 BOOM CONTROL CYLINDER

a) Characteristics

- Maximum service pressure: 210
- Maximum proof pressure: 350
- Bore diameter: 60
- Rod diameter: 35
- Stroke: 360

b) Description (Figure C16)

- 1 Pin
- 2 Cylinder body
- 3 Nut
- 4 Piston (1)
- 5 Seal
- 6 Seal
- 7 Piston (2)
- 8 Ring
- 9 Rod
- 10 Cylinder head
- 11 Seal
- 12 Extrusion-inhibiting washer
- 13 Seal
- 14 Scraper seal.



C23

CLICK HERE TO **DOWNLOAD** THE COMPLETE MANUAL

- Thank you very much for reading the preview of the manual.
- You can download the complete manual from: www.heydownloads.com by clicking the link below



- Please note: If there is no response to CLICKING the link, please download this PDF first and then click on it.

CLICK HERE TO **DOWNLOAD** THE COMPLETE MANUAL