

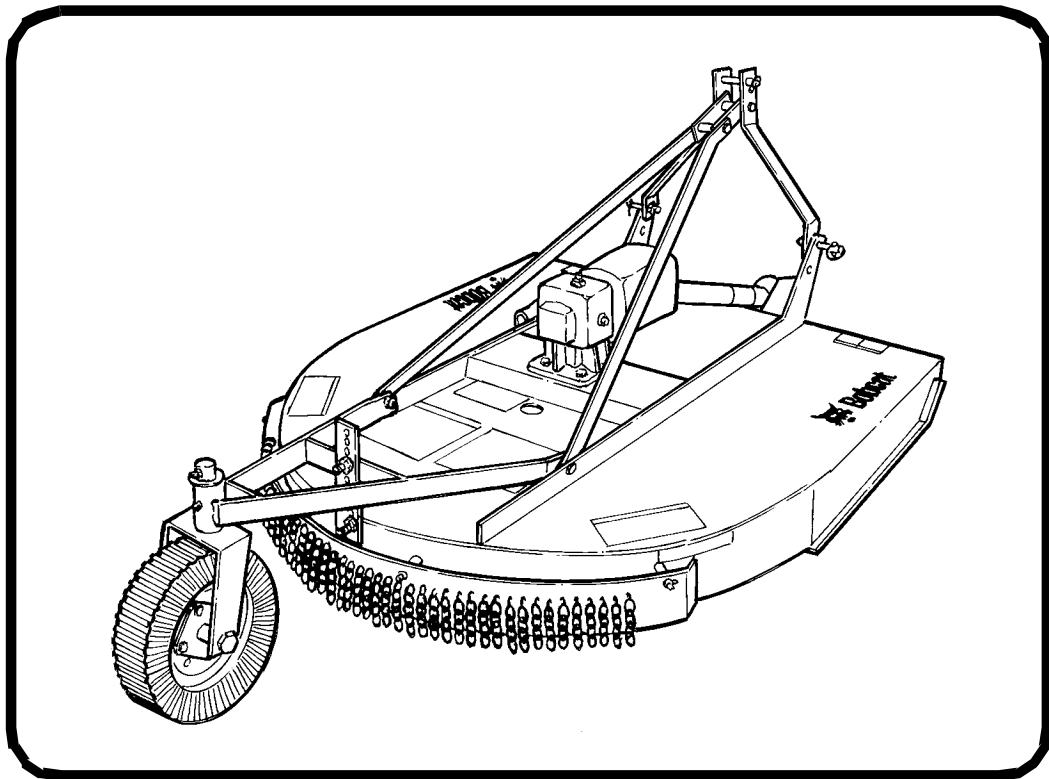


Bobcat®

Service Manual

Three-Point Rotary Cutter

(3RC60SB) S/N AL1M00101 & Above
(3RC60SC) S/N AL1K00101 & Above
(3RC72SB) S/N AL1N00101 & Above
(3RC72SC) S/N AL1L00101 & Above



CLICK HERE TO **DOWNLOAD** THE COMPLETE MANUAL

- Thank you very much for reading the preview of the manual.
- You can download the complete manual from: www.heydownloads.com by clicking the link below



- Please note: If there is no response to CLICKING the link, please download this PDF first and then click on it.

CLICK HERE TO **DOWNLOAD** THE COMPLETE MANUAL



Bobcat[®]

REMOVAL AND INSTALLATION OF SHEAR BOLT (GRADE 2)

Procedure

WARNING

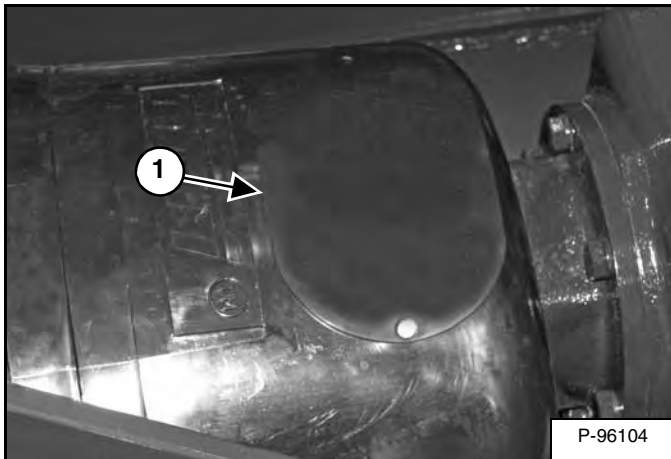
AVOID INJURY OR DEATH

Wear safety glasses to prevent eye injury when any of the following conditions exist:

- When fluids are under pressure.
- Flying debris or loose material is present.
- Engine is running.
- Tools are being used.

W-2019-0907

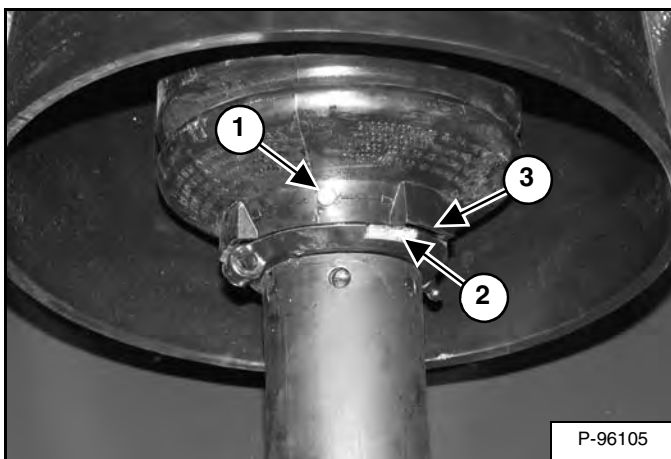
Figure 10-50-1



Open the gearbox shield access covers (Item 1) [Figure 10-50-1].

Installation: Close and secure the shield access covers.

Figure 10-50-2



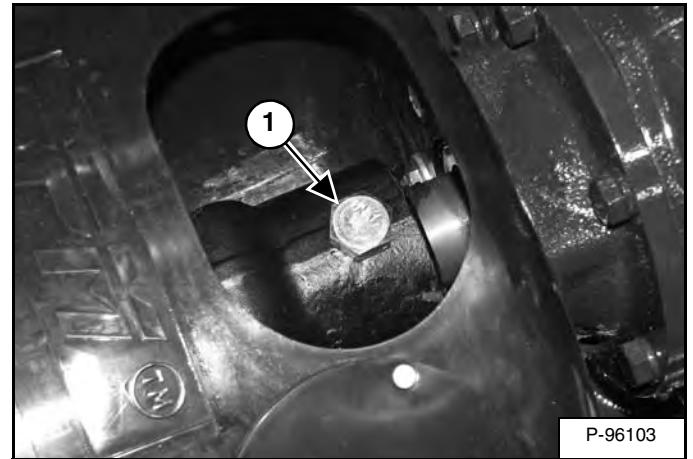
Remove the retaining screw (Item 1) [Figure 10-50-2] from the PTO shaft.

Remove the shield by aligning the white tabs (Item 2) with the openings (Item 3) [Figure 10-50-2] and pull back the guard.

Installation: Slide the guard over the gearbox connection aligning the white tabs with the openings.

Turn the shield to offset white tabs and openings. Install retaining screw to lock shield in position.

Figure 10-50-3



Remove the shear bolt (Item 1) [Figure 10-50-3].

Installation: Align holes in the PTO driveline and gear box shaft. Install the Grade 2 shear bolt. Install and tighten the lock nut.

WARNING

AVOID INJURY OR DEATH

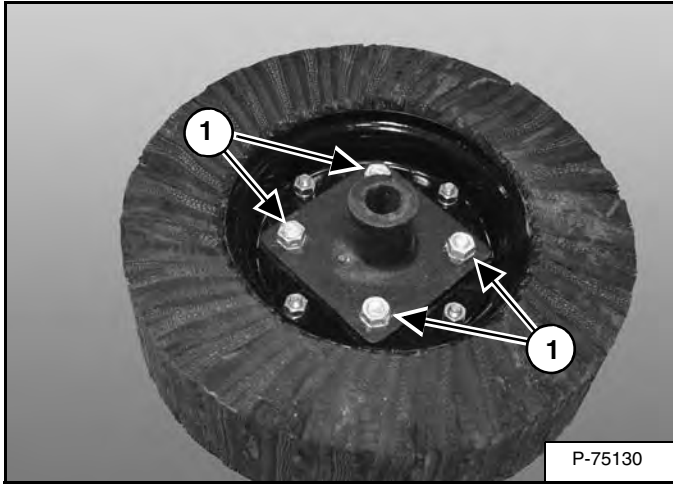
- Do NOT exceed the rated implement PTO speed.
- Stay clear of rotating driveline.
- Keep bystanders away.
- Keep hands, feet, clothing and long hair away.
- Keep PTO shields and all guards in place.
- Disengage PTO (rear and mid), engage the parking brake, stop the engine and make sure all rotating components are stopped before exiting compact tractor.
- Do NOT service the compact tractor or implement with the PTO (rear or mid) engaged.
- Do NOT service the implement in a raised position unless properly blocked and with all rotating components stopped.
- Disengage PTO (rear and mid) for road travel.

W-2697-1007

CASTER WHEEL (CONT'D)

Removal (Cont'd)

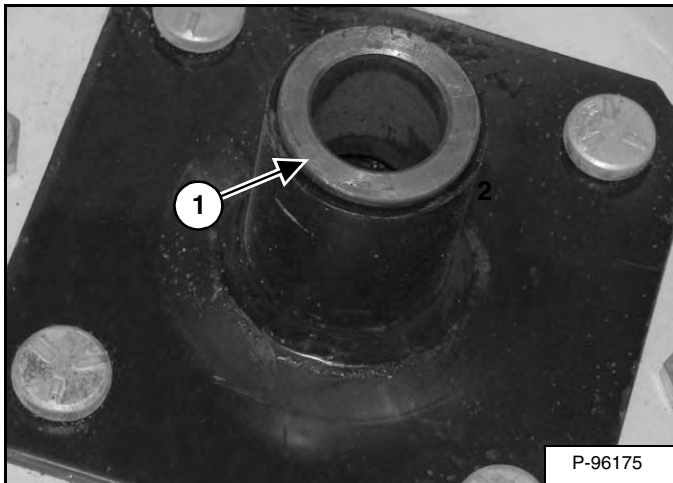
Figure 20-20-3



Remove the four nuts (Item 1) [Figure 20-20-3] and bolts.

Remove the hub from the rim.

Figure 20-20-4

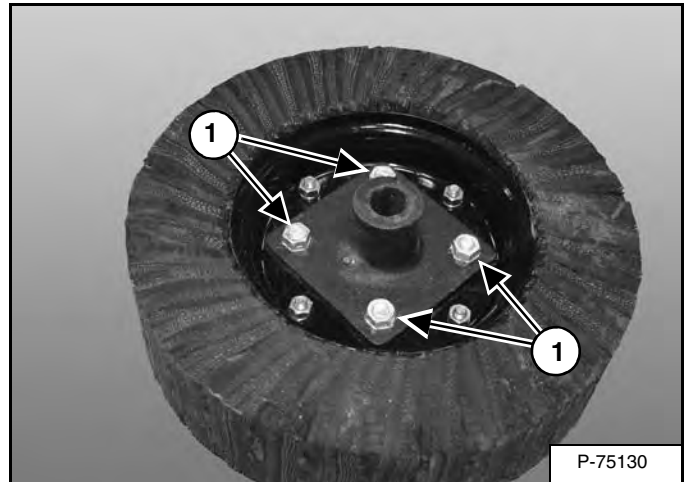


Remove the bushing (Item 1) [Figure 20-20-4] from the hub. Repeat for other half of hub.

Inspect the bushing for wear or damage, replace if needed. See your Bobcat dealer for replacement parts.

Installation

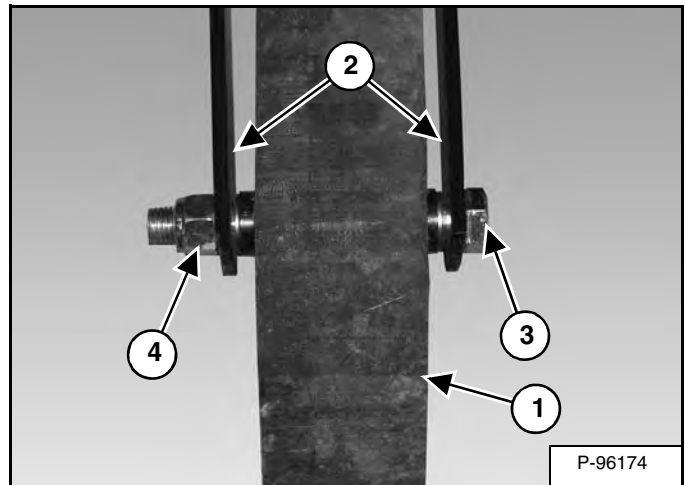
Figure 20-20-5



Align hub and rim mounting holes.

Install and tighten bolts and nuts (Item 1) [Figure 20-20-5] to specified torque. (See TORQUE SPECIFICATIONS FOR BOLTS on Page SPEC-20-1.)

Figure 20-20-6



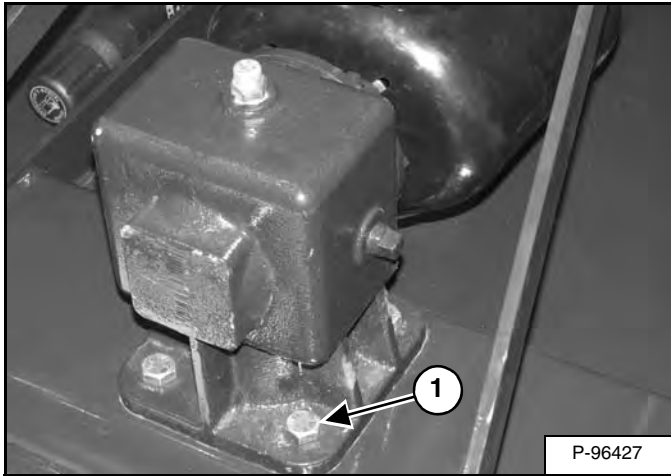
Position the tire assembly (Item 1) between the mounting plates (Item 2), install the bolt (Item 3) [Figure 20-20-6].

Install and tighten lock nut (Item 4) [Figure 20-20-6] leaving a gap between the mounting plates and hub.

GEARBOX (CONT'D)

Removal And Installation (Cont'd)

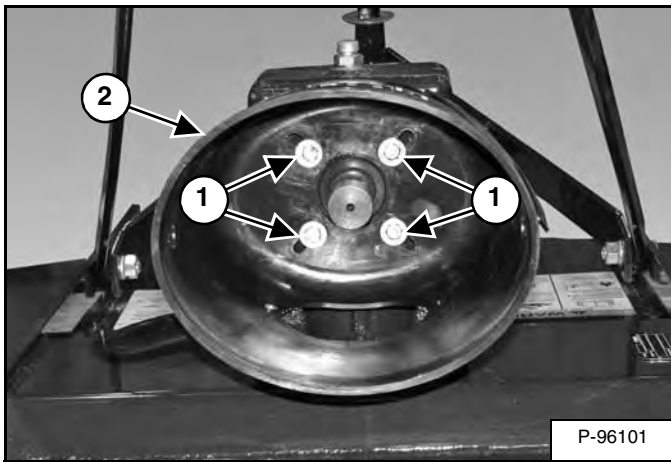
Figure 20-40-6



Remove the four bolts (Item 1) [Figure 20-40-6] from the gearbox.

Installation: Position gearbox and install the four bolts.

Figure 20-40-7



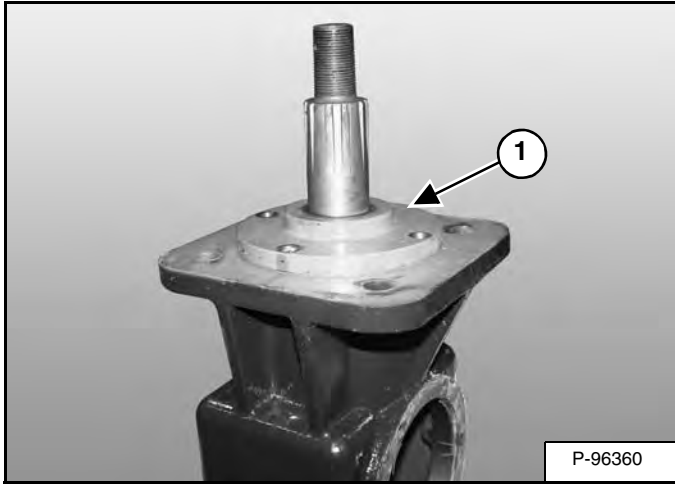
Remove the four bolts (Item 1) and washers. Remove the driveline shield (Item 2) [Figure 20-40-7] from the gearbox.

Installation: Install the bolts / washers and tighten to specified torque. (See TORQUE SPECIFICATIONS FOR BOLTS on Page SPEC-20-1.)

GEARBOX (CONT'D)

Assembly (Cont'd)

Figure 20-40-36

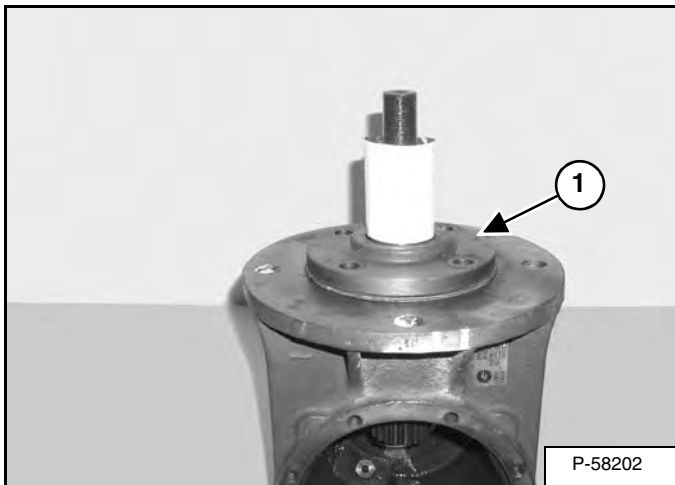


Install the flange (Item 1) [Figure 20-40-36].

Wrap several layers of glossy paper around the output shaft.

NOTE: The glossy paper will protect the seal from being damaged when it is installed over the output shaft splines.

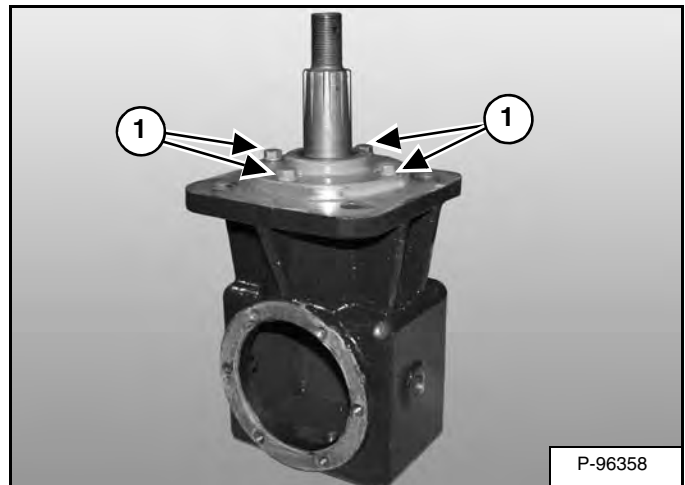
Figure 20-40-37



Slide the flange (Item 1) [Figure 20-40-37] over the shaft.

Remove the glossy paper after the flange is seated.

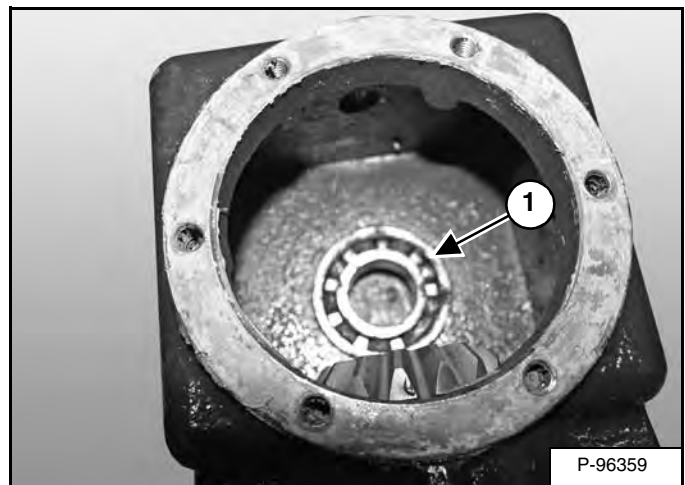
Figure 20-40-38



Install the bolts (Item 1) [Figure 20-40-38].

Tighten the bolts to specified torque. (See TORQUE SPECIFICATIONS FOR BOLTS on Page SPEC-20-1.)

Figure 20-40-39



Install the bearing (Item 1) [Figure 20-40-39] into the housing.

CLICK HERE TO **DOWNLOAD** THE COMPLETE MANUAL

- Thank you very much for reading the preview of the manual.
- You can download the complete manual from: www.heydownloads.com by clicking the link below



- Please note: If there is no response to CLICKING the link, please download this PDF first and then click on it.

CLICK HERE TO **DOWNLOAD** THE COMPLETE MANUAL