



Bobcat®

Service Manual



Backhoe

(B32S) S/N B57J00101 & Above
(B32V) S/N B52R00101 & Above
(B35S) S/N B57K00101 & Above
(B35V) S/N B53F00101 & Above



CLICK HERE TO **DOWNLOAD** THE COMPLETE MANUAL

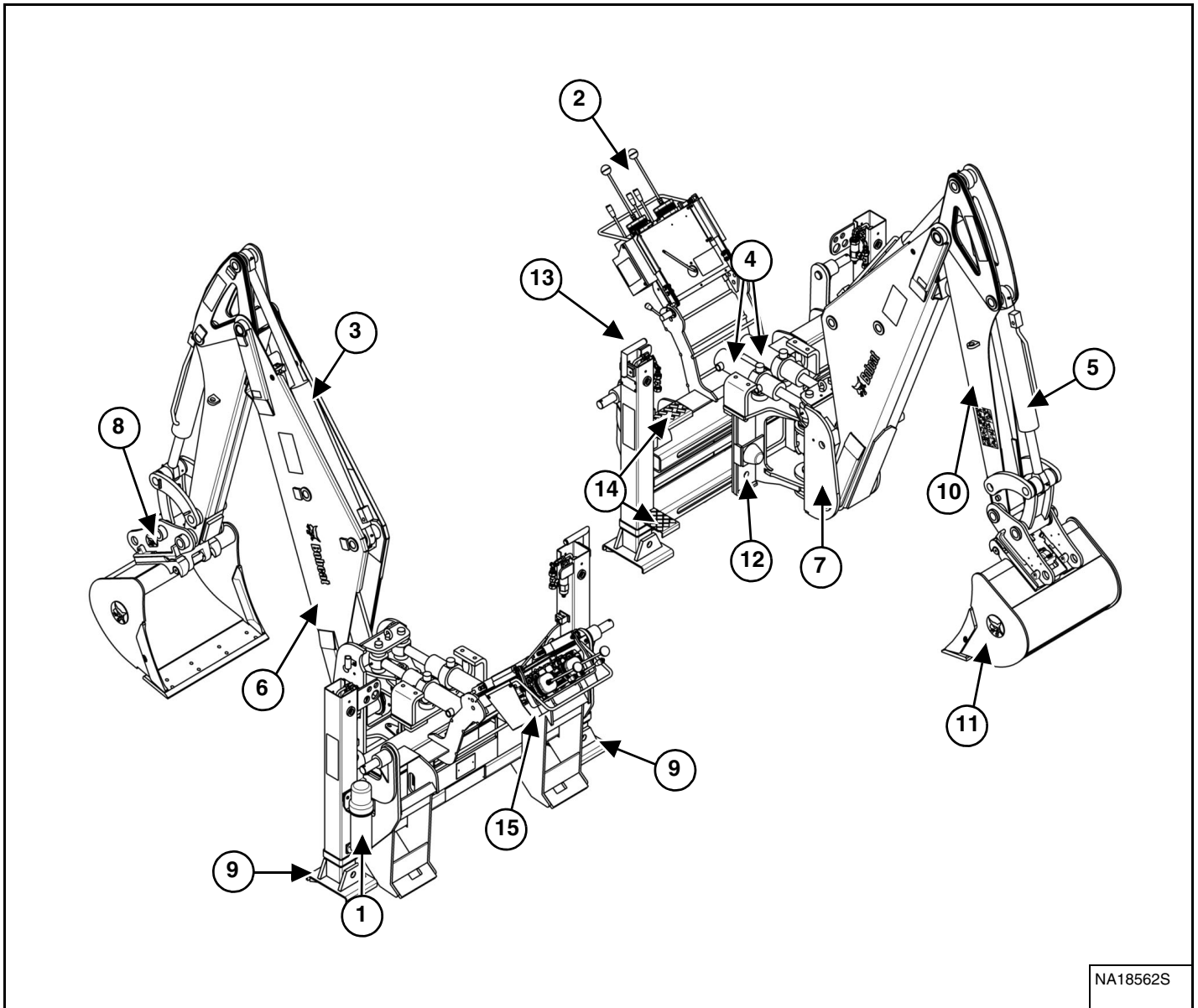
- Thank you very much for reading the preview of the manual.
- You can download the complete manual from: www.heydownloads.com by clicking the link below



- Please note: If there is no response to CLICKING the link, please download this PDF first and then click on it.

CLICK HERE TO **DOWNLOAD** THE COMPLETE MANUAL

BACKHOE IDENTIFICATION



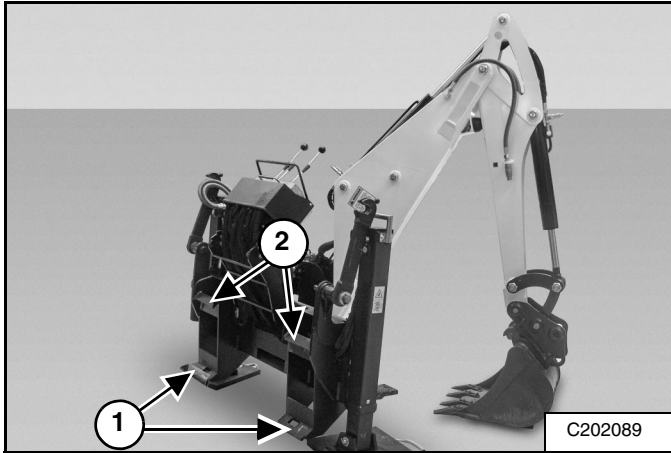
NA18562S

ITEM	DESCRIPTION	ITEM	DESCRIPTION
1	Operation & Maintenance Manual Container	9	Stabilizer
2	Hydraulic Controls	10	Arm
3	Arm Cylinder	11	Bucket
4	Swing Cylinder	12	Slide Frame
5	Bucket Cylinder	13	Grab Handles
6	Boom	14	Steps
7	Swing Frame	15	Console Lockout System
8	Klac™ Coupler		

DAILY INSPECTION

Attachment Mounting Frame

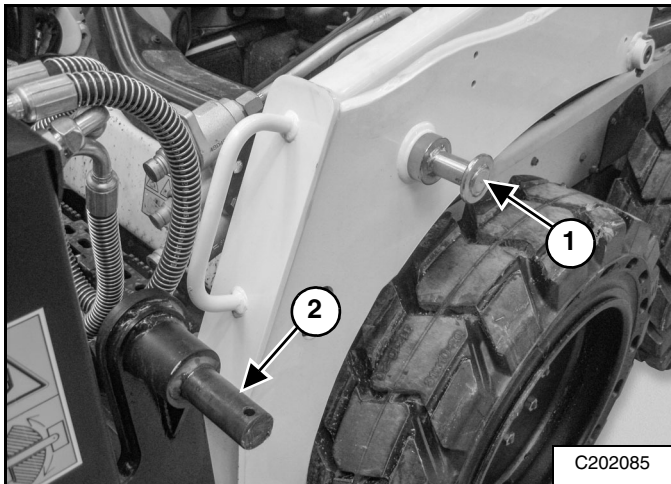
Figure 10-40-1



Inspect the Bob-Tach wedge mounts (Item 1), mounting flange (Item 2) [Figure 10-40-1] and all welds on the backhoe for wear and damage each time the backhoe is removed from the machine.

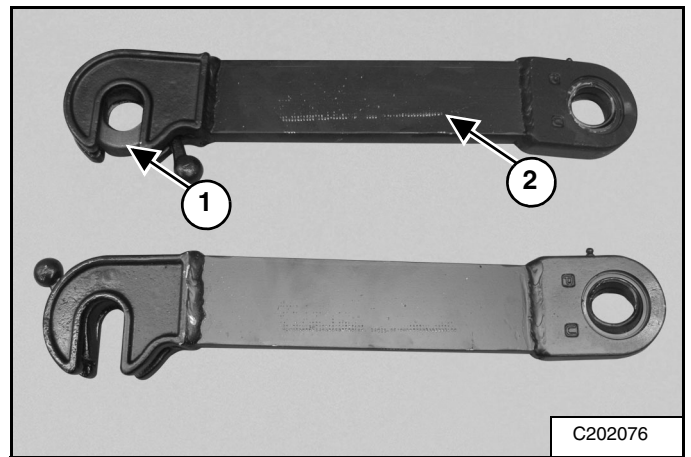
Frequently inspect the backhoe to ensure that all components are secure and that all bolts and nuts are thoroughly tightened.

Figure 10-40-2



Check the pins on the lift arms (Item 1) and the backhoe (Item 2) [Figure 10-40-2] for damage or wear (both sides).

Figure 10-40-3



Check condition of the backhoe frame locking levers (Item 1) [Figure 10-40-3] (both sides).

Check the condition of backhoe mounting arms (Item 2) [Figure 10-40-3] (both sides).

ATTACHMENT (CONT'D)

Installing And Removing The Attachment (Klac™ System) (Cont'd)

Removing The Attachment (For Models B32V And B35V Only)

Park the loader on a level surface.

Position the attachment flat on the ground.

Stop the engine and exit the loader.

NOTE: Removal of a bucket is shown. The procedure is the same for other attachments. Disconnect any hydraulic lines that are operated by hydraulic power before removing any attachments (breaker, auger etc.).

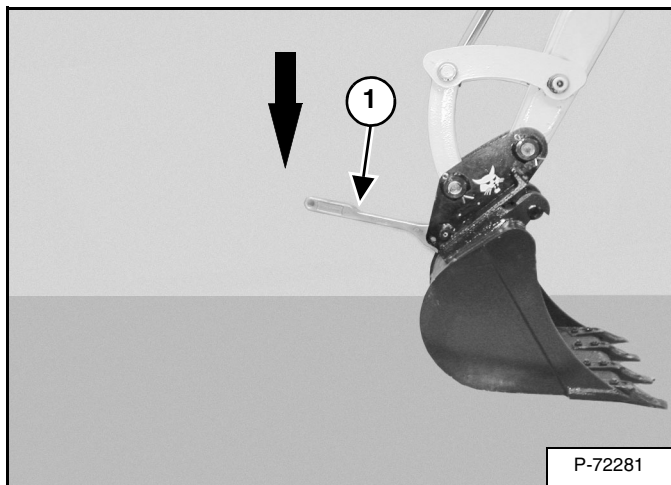


AVOID INJURY

Keep fingers and hands out of pinch points when latching and unlatching the attachment quick coupler.

W-2541-1106

Figure 10-50-11



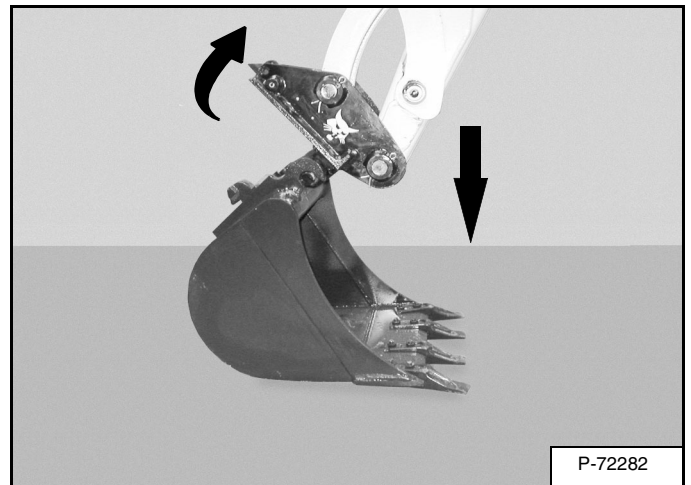
Install the quick coupler tool (Item 1) [Figure 10-50-11] into the hole in the quick coupler.

Push down on the tool (Item 1) [Figure 10-50-11] to unlock the latch.

Remove the tool.

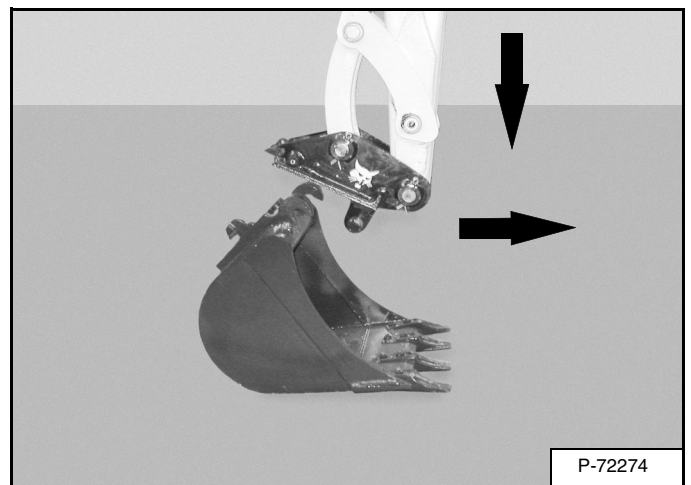
Enter the loader, fasten the seat belt and start the engine.

Figure 10-50-12



Retract the bucket cylinder fully and lower the boom [Figure 10-50-12].

Figure 10-50-13



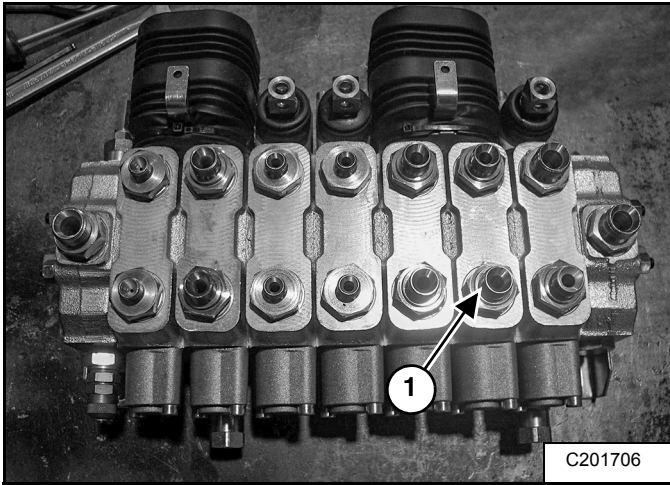
Continue to lower the boom and move the arm toward the loader away from the attachment [Figure 10-50-13].

HYDRAULIC CONTROL VALVE (CONT'D)

Fittings Removal And Installation

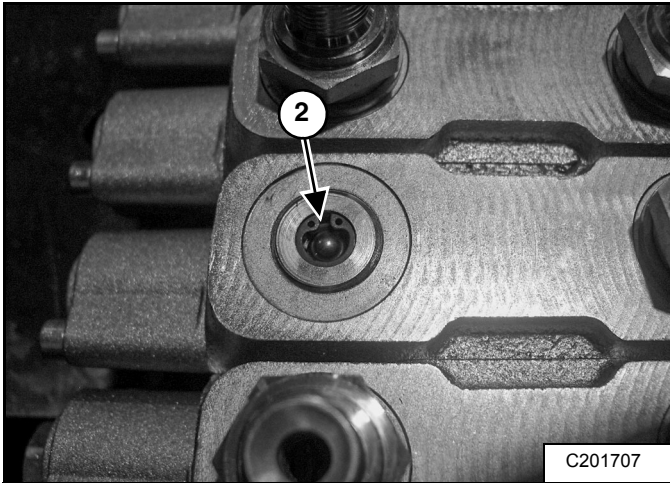
Mark the fittings before removal.

Figure 20-10-14



The fitting (Item 1) consists of two parts. Remove the outer part of the fitting (Item 1) [Figure 20-10-14].

Figure 20-10-15



Use a screwdriver to loosen the inner part of the fitting (Item 1) [Figure 20-10-14]. Remove the inner part of the fitting (Item 2) [Figure 20-10-15].

Installation: Use a screwdriver to tighten the inner part of the fitting (Item 2) [Figure 20-10-15]. Install the outer part of the fitting (Item 1) [Figure 20-10-14].

CLICK HERE TO **DOWNLOAD** THE COMPLETE MANUAL

- Thank you very much for reading the preview of the manual.
- You can download the complete manual from: www.heydownloads.com by clicking the link below



- Please note: If there is no response to CLICKING the link, please download this PDF first and then click on it.

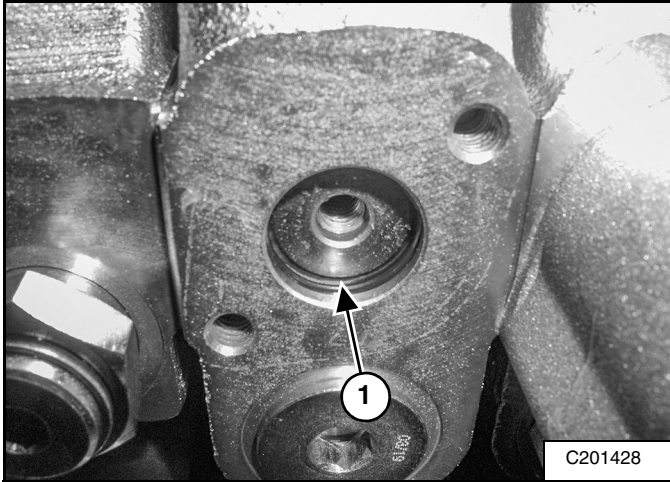
CLICK HERE TO **DOWNLOAD** THE COMPLETE MANUAL

HYDRAULIC CONTROL VALVE (CONT'D)

Disassembly And Assembly (Cont'd)

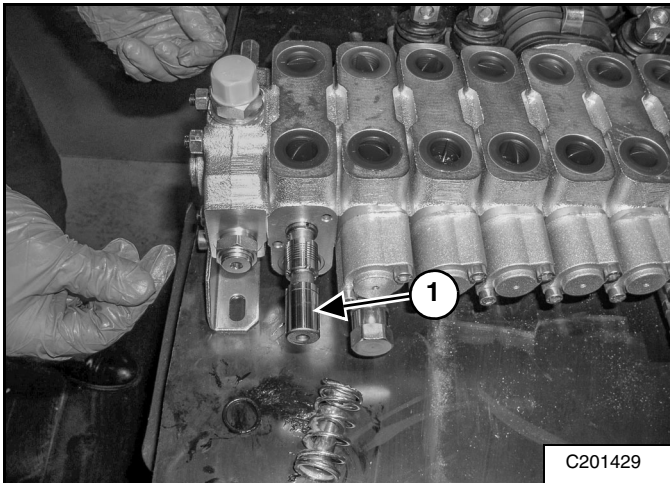
All Other Valve Spool Disassembly And Assembly (Cont'd)

Figure 20-10-39



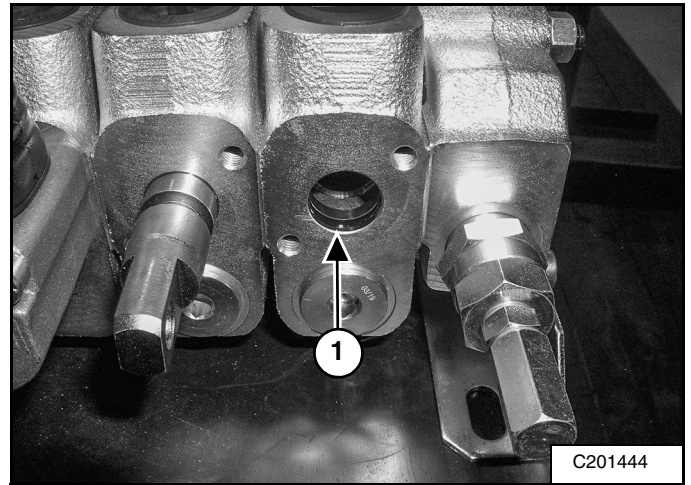
Remove the seal (Item 1) [Figure 20-10-39] from the rear of the valve.

Figure 20-10-40



Remove the spool (Item 1) [Figure 20-10-40] from the rear of the valve.

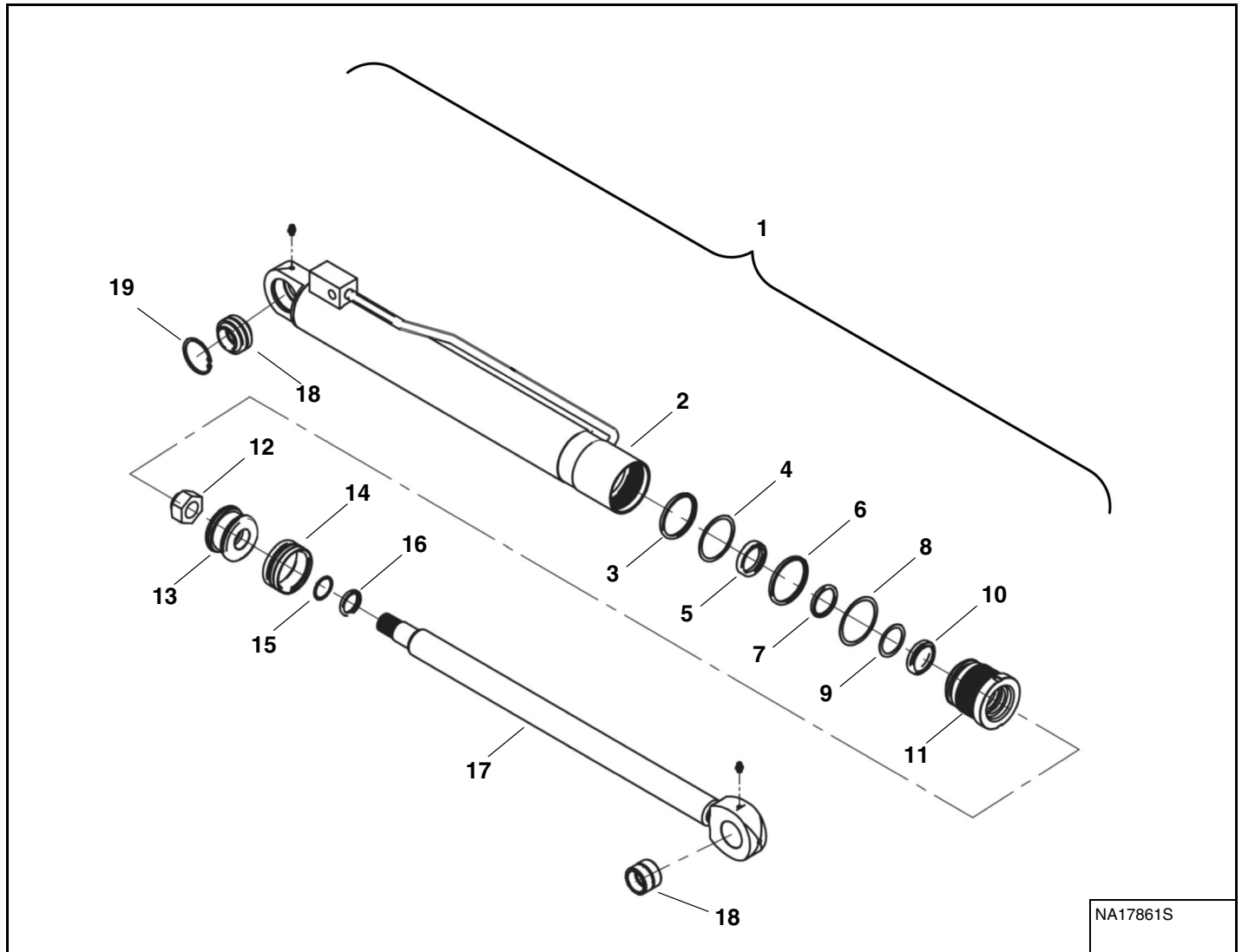
Figure 20-10-41



Remove the seal (Item 1) [Figure 20-10-41] from the front valve.

ARM CYLINDER

Parts Identification



NA17861S

ITEM	DESCRIPTION	ITEM	DESCRIPTION
1	Cylinder, Arm	11	Head
2	Sleeve	12	Nut
3	O-ring	13	Piston
4	Ring, Back-up	14	Seal
5	Seal	15	Seal
6	O-ring	16	Seal
7	Seal	17	Rod
8	O-ring	18	Bushing
9	Seal	19	Snap Ring
10	Seal		

LOCKING CYLINDER (CONT'D)

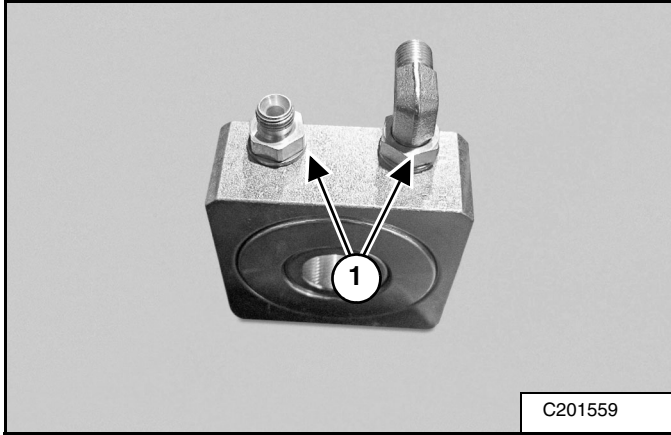
Disassembly And Assembly

NOTE: Clean the outside of the cylinder before disassembly.

Use the following tools to disassembly the cylinder:

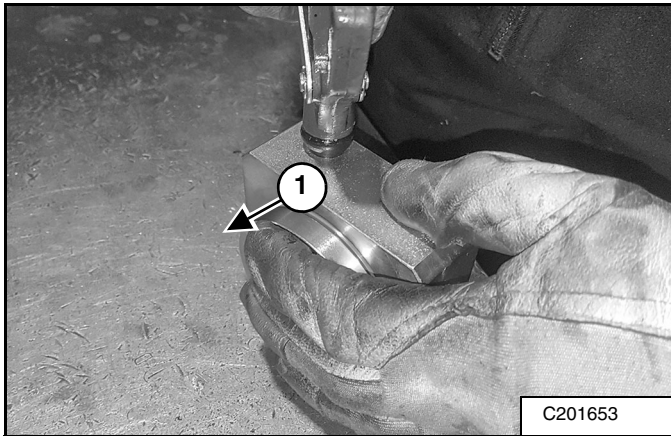
MEL1074 - O-ring Seal Hook

Figure 20-50-3



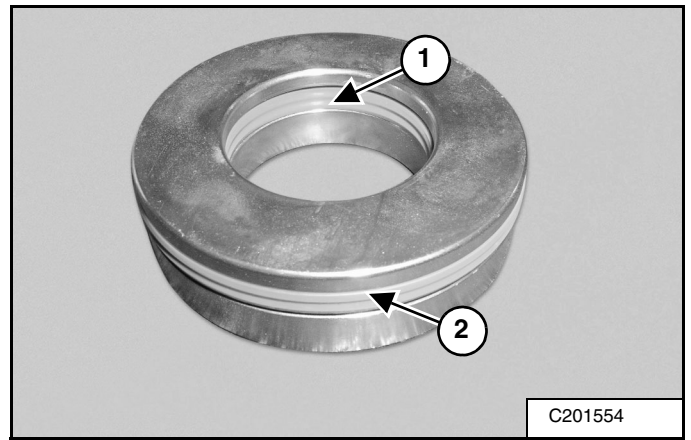
Remove the fittings (Item 1) [Figure 20-50-3].

Figure 20-50-4



Apply light air pressure to remove the piston (Item 1) [Figure 20-50-4].

Figure 20-50-5



Remove the inner seal (Item 1) and outer seal (Item 2) [Figure 20-50-5].

WORK GROUP

Removal And Installation

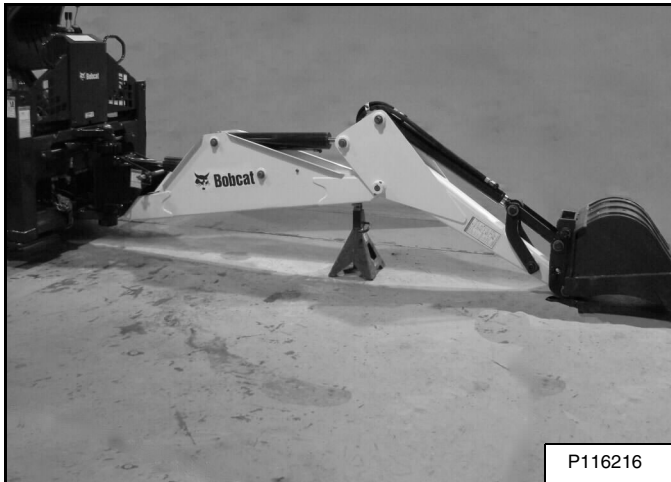
IMPORTANT

When repairing hydrostatic and hydraulic systems, clean the work area before disassembly and keep all parts clean. Always use caps and plugs on hoses, tubelines and ports to keep dirt out. Dirt can quickly damage the system.

I-2003-0888

NOTE: The Backhoe must be securely attached to the loader to do the following procedure.

Figure 30-10-1



Move the work group to the horizontal position.

Set the bucket on the ground and support the boom as shown in **[Figure 30-10-1]**.

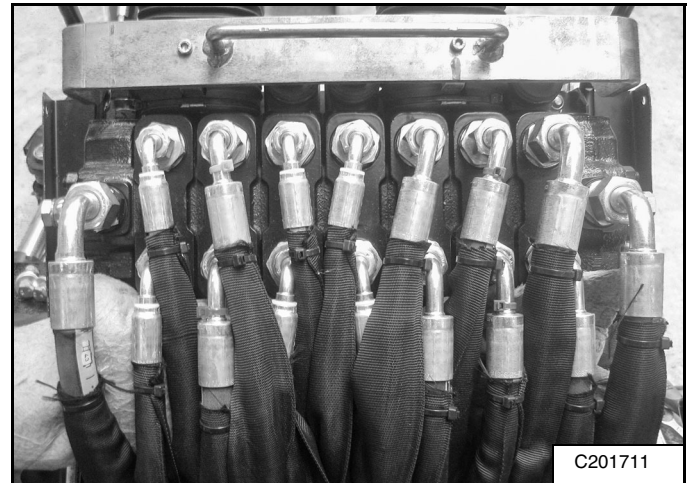
Move the control levers to relieve hydraulic pressure.

NOTE: The boom must be secured when removed from the main frame.

Place a container under the backhoe.

Remove the hydraulic control valve cover.

Figure 30-10-2



Mark and disconnect the hydraulic hoses from the hydraulic control valve **[Figure 30-10-2]**.

Cap and plug the hoses and tubelines.

SPECIFICATIONS

B32S AND B32V BACKHOE SPECIFICATIONS	SPEC-10-1
Dimensions For B32S With Pin-On Bucket	SPEC-10-1
Dimensions For B32V With Klac™ Attachment Coupler	SPEC-10-2
Dimensions For Backhoe Frame	SPEC-10-3
Dimensions For Work Group	SPEC-10-4
Performance (B32S And B32V)	SPEC-10-4
Dimensions For B35S With Pin-On Bucket	SPEC-10-5
Dimensions For B35V With Klac™ Attachment Coupler	SPEC-10-6
Dimensions For Backhoe Frame	SPEC-10-7
Dimensions For Work Group	SPEC-10-8
Performance (B35S And B35V)	SPEC-10-8
Hydraulic (B35S And B35V)	SPEC-10-8
SCHEMATICS	SPEC-20-1
Hydraulic Schematic B32V And B35V	SPEC-20-1
TORQUE SPECIFICATIONS FOR BOLTS	SPEC-30-1
Torque For General SAE Bolts	SPEC-30-1
Torque For General Metric Bolts	SPEC-30-2
HYDRAULIC CONNECTION SPECIFICATIONS	SPEC-40-1
O-ring Face Seal Connection	SPEC-40-1
Straight Thread O-ring Fitting	SPEC-40-1
Tubelines And Hoses	SPEC-40-1
Flare Fitting	SPEC-40-2
Port Seal Fitting	SPEC-40-2

Certain specification(s) are based on engineering calculations and are not actual measurements. Specification(s) are provided for comparison purposes only and are subject to change without notice. Specification(s) for your individual Bobcat equipment will vary based on normal variations in design, manufacturing, operating conditions and other factors.

SCHEMATICS

Hydraulic Schematic B32V And B35V

HYDRAULIC SCHEMATIC BACKHOE B32S (S/N B57J00101 AND ABOVE) B35S (S/N B57K00101 AND ABOVE) B32V (S/N B52R00101 AND ABOVE) B35V (S/N B53F00101 AND ABOVE)

(PRINTED JULY 2020)
7401428 (0)

LEGEND

- | | |
|---|--|
| ① DIRECTIONAL CONTROL VALVE - Turn | ⑨ CHECK VALVE (2) |
| ② DIRECTIONAL CONTROL VALVE - Stick | ⑩ CHECK VALVE (12) |
| ③ DIRECTIONAL CONTROL VALVE - Left Stabilizer | ⑪ CHECK VALVE with Orifice |
| ④ DIRECTIONAL CONTROL VALVE - Right Stabilizer | ⑫ RELIEF VALVE: 20-40 L/min (5.3-10.6 gpm) = 16500 +/- 500 kPa (165 +/- 5 bar) (2393 psi); 65 L/min (17.2 gpm) = 20000 +/- 500 kPa (200 +/- 5 bar) (2901 +/- 73 psi) |
| ⑤ DIRECTIONAL CONTROL VALVE - Bucket | ⑬ RELIEF VALVE: 21000 kPa (210 bar) (3046 psi) |
| ⑥ DIRECTIONAL CONTROL VALVE - Boom | ⑭ RELIEF VALVE: 25000 kPa (250 bar) (3626 psi) |
| ⑦ DIRECTIONAL CONTROL VALVE - Attachment (Only on B57J00101 & ABOVE, B57K00101 & ABOVE) | ⑮ RELIEF VALVE: 13000 kPa (130 bar) (1885 psi) (Only on B57J00101 & ABOVE, B57K00101 & ABOVE) |
| ⑧ DIRECTIONAL CONTROL VALVE - Blocking | ⑯ RELIEF VALVE |

CLICK HERE TO **DOWNLOAD** THE COMPLETE MANUAL

- Thank you very much for reading the preview of the manual.
- You can download the complete manual from: www.heydownloads.com by clicking the link below



- Please note: If there is no response to CLICKING the link, please download this PDF first and then click on it.

CLICK HERE TO **DOWNLOAD** THE COMPLETE MANUAL