



# **SERVICE & MAINTENANCE**

## **Models 40HT**

**3120243**

August 1, 1985



---

### **AUSTRALIAN OFFICE**

**JLG INDUSTRIES, INC.**  
P.O. Box 5119  
11 Bolwarra Road  
Port Macquarie, Australia  
Telephone: 065 811111  
Fax: 065 810122

### **EUROPEAN OFFICE**

**JLG INDUSTRIES (EUROPE)**  
Kilmartin Place,  
Tannochside Park  
Uddingston, Scotland, G71 5PH  
Telephone: 01698 811005  
Main Fax: 01698 811055  
Parts Fax: 01698 811455

### **CORPORATE OFFICE**

**JLG INDUSTRIES, INC.**  
1 JLG Drive  
McConnellsburg, PA.  
17233-9533  
USA  
Telephone: (717) 485-5161  
Fax: (717) 485-6417

CLICK HERE TO **DOWNLOAD** THE COMPLETE MANUAL

- Thank you very much for reading the preview of the manual.
- You can download the complete manual from: [www.heydownloads.com](http://www.heydownloads.com) by clicking the link below



- Please note: If there is no response to CLICKING the link, please download this PDF first and then click on it.

CLICK HERE TO **DOWNLOAD** THE COMPLETE MANUAL

SECTION 1 — SPECIFICATIONS

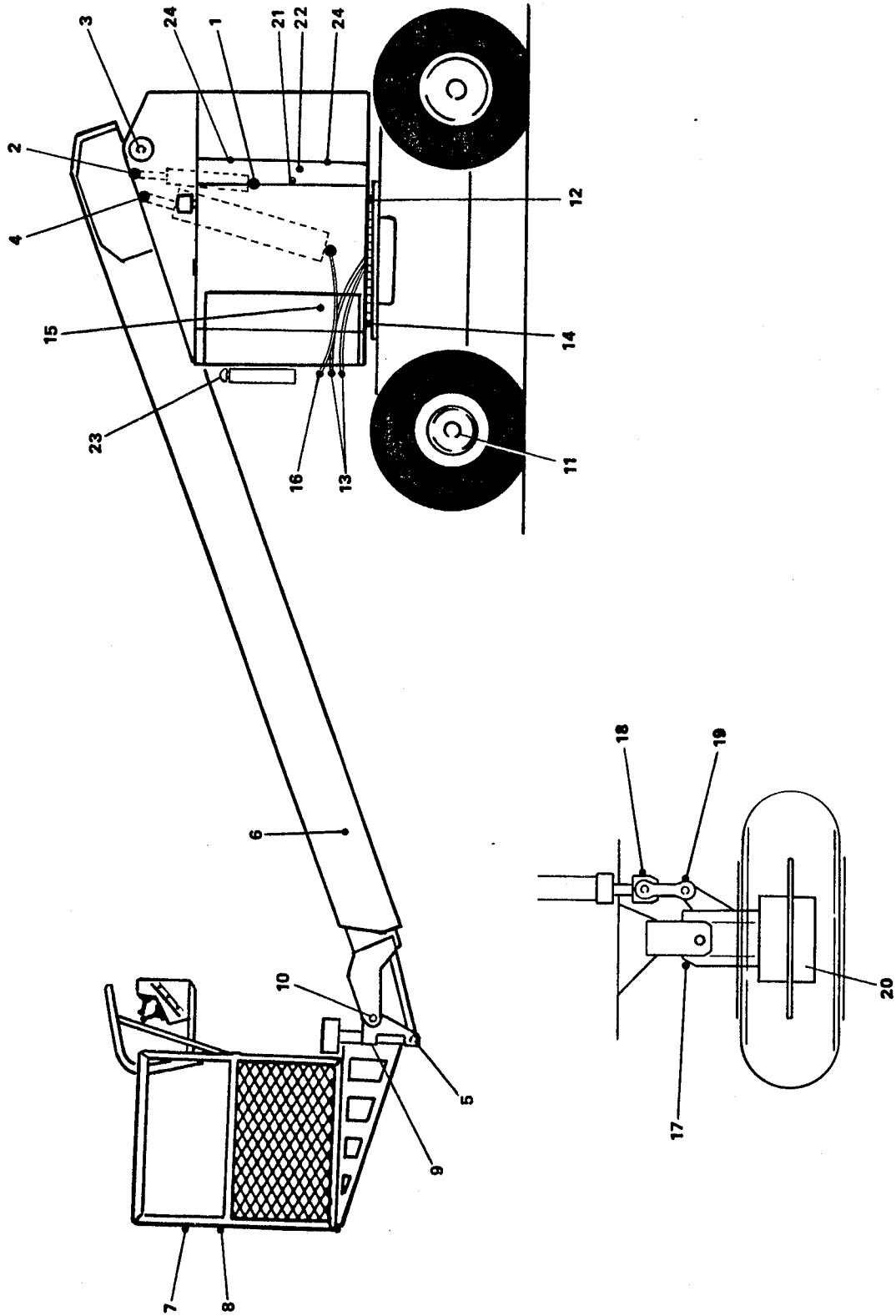


Figure 1-1. Lubrication Chart (Sheet 2 of 2).

## SECTION 2 — PROCEDURES

### TELE. IN & OUT ADJUSTMENT

#### TWO SECTION BOOM

1. Engine at Low RPM.
2. Bottom Out Tele-In, Adjust to 2000 PSI.
3. Bottom Out Tele-Out, Adjust to 1500 PSI.

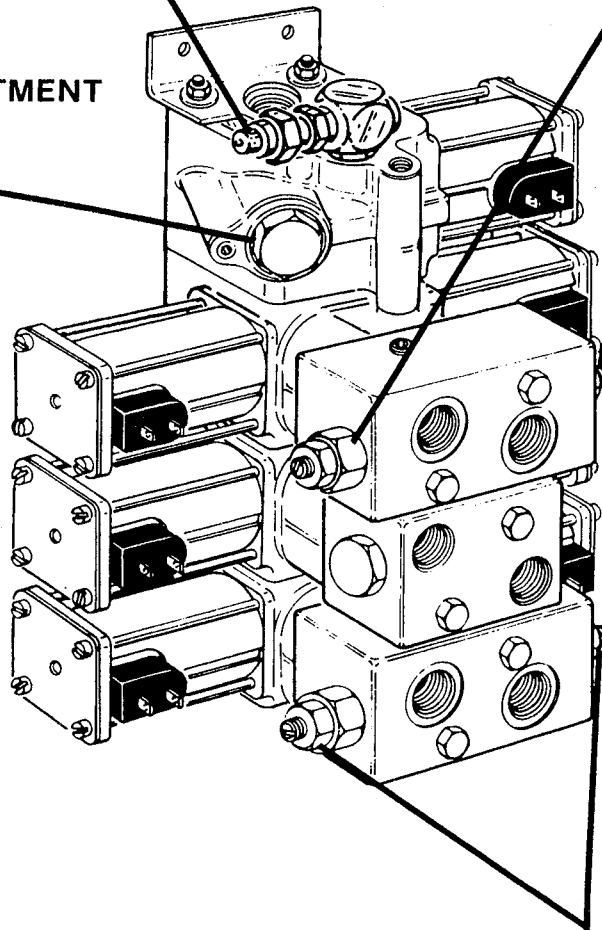
#### THREE SECTION BOOM

1. Engine at Low RPM.
2. Bottom Out Tele-In, Adjust to 2500 PSI.
3. Bottom Out Tele-Out, Adjust to 1500 PSI.

CHECK POINT FOR TELE.,  
ROTATE AND MAIN RELIEF

### MAIN RELIEF ADJUSTMENT

1. Engine @ Low RPM.
2. Bottom Out Tele-In.
3. Adjust 2500 PSI.



### STEER LEFT & STEER RIGHT ADJUSTMENT

1. Engine @ Low RPM.
2. Bottom Out Steer - Left, Adjust To 1500 PSI.
3. Bottom Out Steer - Right, Adjust To 1500 PSI.

Figure 2-4. Solenoid Valve Pressure Settings (w/o Steering Wheel).

**SECTION 2 — PROCEDURES**

**PREVENTIVE MAINTENANCE AND INSPECTION SCHEDULE (CONT'D)**

AREA	INTERVAL				
	(10 HRS) DAILY	(50 HRS) WEEKLY	(200 HRS) MONTHLY	(500 HRS) 3 MONTH	(1000 HRS) 6 MONTH
<b>TURNTABLE</b>					
1. Engine Oil (Refer to mfg. manual for detailed maint. schedule) .....	3	5			
2. Battery .....	3	5			
3. Radiator .....		3,5			
4. Air Cleaner .....	1	14			
5. Exhaust System .....	1		1,5		
6. Engine Mounts .....			1		
7. Gauges/Ground Controls .....	1,2,11				
8. Main Hydraulic Pump .....	1	5			
9. Auxiliary Power Pump .....	1	5			
10. Valves .....	1	5			
11. Hydraulic Filters .....	14	5			
12. Hydraulic Hoses and Tubing .....	1	5			
13. Hydraulic Oil Tank * .....	3	5	4		16
14. Breather Hydraulic Tank .....		6,14			
15. Fuel Tank .....	3,5		4		
16. Cylinders .....	12	1,5,6,13	4		
17. Shields .....	1				
18. Turntable Locking Pin .....	1,7		4		
19. Horizontal Limit Switch .....	1,7				
20. Oil Coupling .....		5			
21. Placards and Decals .....	1,2				
22. Swing Bearing .....		1,12		9	
23. Swing Torque Hub .....		1,3,5,6		10	
24. Swing Brake .....		1,5,6	8		
*Inspection and Maintenance Code 10 to be performed annually.					
<b>CHASSIS</b>					
1. Wheel and Tire Assembly .....	1	8,15,9			
2. Drive Motors .....		1,5,6			
3. Drive Torque Hubs .....		1,3,5,6		10	
4. Drive Brakes .....		1,5,6	8		
5. Steer Cylinder .....	1	5,6,12,13			
6. Steer Components .....	1	4,6,12	8		
7. Lockout Cylinders .....	1	5,12,13			
8. Front Axle Pin .....	1	12	8		
9. Hydraulic Hoses and Tubing .....	1	5			
10. Placards and Decals .....	1,2				
11. Shields .....	1				
12. Wheel Bearings .....			8	12	
13. Swing Bearing/Pinion Gear .....				9,12	

\*Inspection and Maintenance Code 10 to be performed annually.

## SECTION 3 — TROUBLESHOOTING

Table 3-3. Turntable Assembly Troubleshooting.

TROUBLE	PROBABLE CAUSE	REMEDY
<b>Control Valves.</b>	Valve spool sticking.	Change oil using recommended viscosity and flush system.
		Loosen valve and check mounting. Repair as necessary.
<b>Valve leaking.</b>	Valve spool scored.	Remove valve and repair or replace as necessary.
	Return spring weak or broken.	Remove valve and repair or replace as necessary.
	Relief valve malfunctioning causing excessive pressure within valve.	Check pressure delivery to and from valve and repair or replace as necessary.
	Dirt or other foreign material under seal.	Remove and repair valve as necessary.
	Valve spool scored.	Remove valve and repair or replace as necessary.
	Excessive back pressure caused by restricted return line to reservoir.	Remove line and clear obstruction or replace line as necessary.
	Damaged valve seals.	Remove valve and repair or replace as necessary.
		Check fuel tank and immediately wipe up any spilled fuel.
		Drain all fuel from tank and remove tank for replacement or repair.
		Replace fuel line.
<b>Fuel System.</b>		
Strong fuel odor during machine operation.		

### SECTION 3 — TROUBLESHOOTING

Table 3-6. Electrical Systems Troubleshooting.

#### TROUBLESHOOTING CHART

#### TROUBLE

#### REMEDY

#### PROBABLE CAUSE

**Engine Starter System.**

Engine will not crank.

Discharged battery or loose battery terminals.

Check and charge battery or replace battery as necessary. Clean and secure battery terminals.

Starter relay faulty or faulty relay connections.

Using a test meter, check relay coil terminals for presence of electrical power and for energization of relay coil. Also check relay terminals for correct switching of contacts. Replace relay as necessary.

Malfunctioning starter solenoid or motor.

Replace solenoid or motor in accordance with applicable manufacturer's manual.

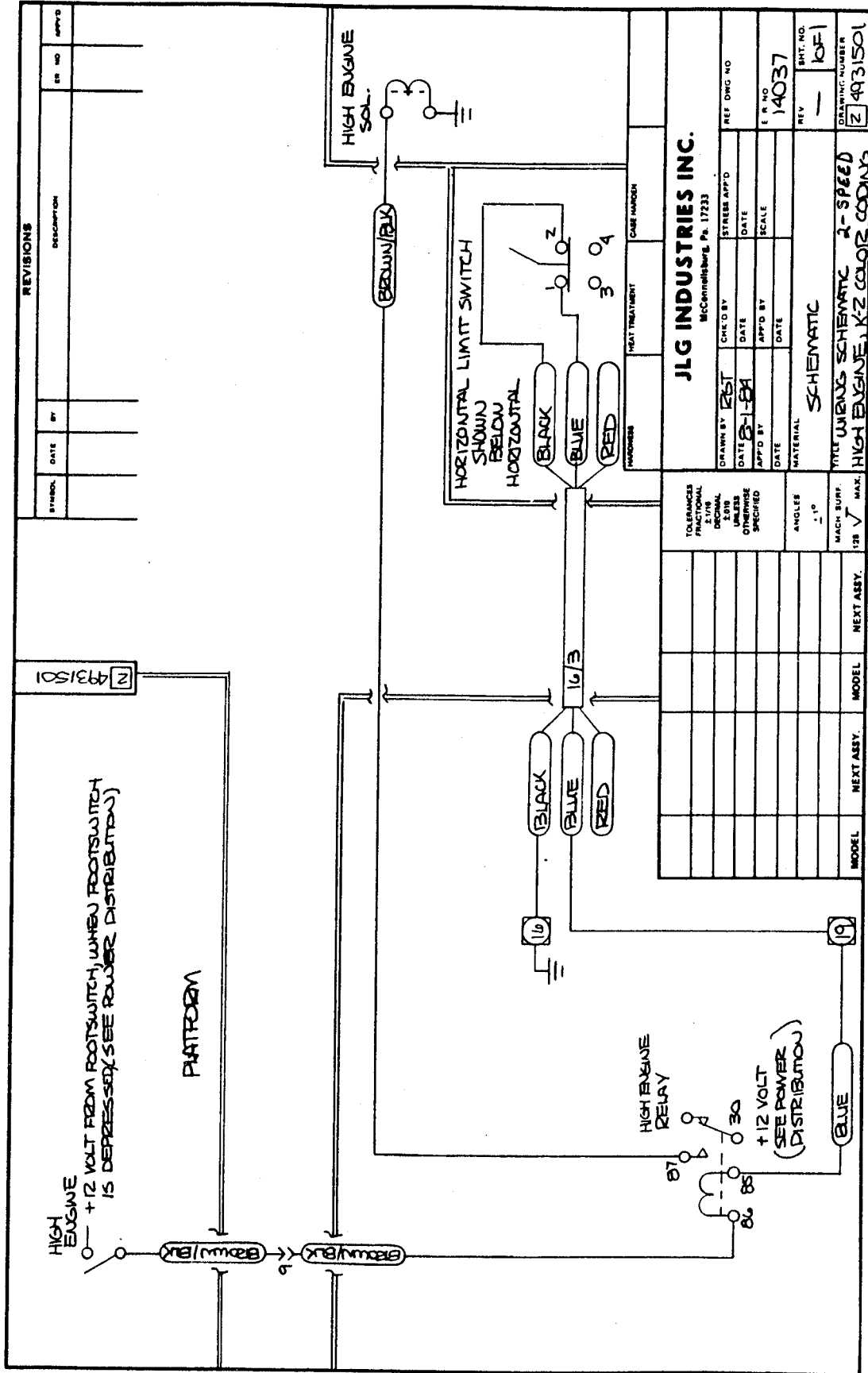
Malfunctioning ignition switch.

Using a test meter, check ignition switch for correct switching of contacts. Replace switch as necessary.

Faulty ignition and/or starter circuit wiring.

Check wiring continuity. Refer to Chapter 5 for wiring diagram.

SECTION 3 — TROUBLESHOOTING



CLICK HERE TO **DOWNLOAD** THE COMPLETE MANUAL

- Thank you very much for reading the preview of the manual.
- You can download the complete manual from: [www.heydownloads.com](http://www.heydownloads.com) by clicking the link below



- Please note: If there is no response to CLICKING the link, please download this PDF first and then click on it.

CLICK HERE TO **DOWNLOAD** THE COMPLETE MANUAL