

TravelMate 4530 Series Service Guide

Service guide files and updates are available on the ACER/CSD web; for more information, please refer to <http://csd.acer.com.tw>

PRINTED IN TAIWAN

CLICK HERE TO **DOWNLOAD** THE COMPLETE MANUAL

- Thank you very much for reading the preview of the manual.
- You can download the complete manual from: www.heydownloads.com by clicking the link below



- Please note: If there is no response to CLICKING the link, please download this PDF first and then click on it.

CLICK HERE TO **DOWNLOAD** THE COMPLETE MANUAL

System Specifications

Features

Below is a brief summary of the computer's many features:

NOTE: Items marked with * denote only selected models.

Operating System

- Genuine Windows® Vista™
- Genuine Windows® XP

Platform

- AMD Better By Design program, featuring:
 - Mobile AMD Sempron™ Processor*
 - AMD Turion™ Ultra Dual-Core Processor*
 - AMD Turion™ Dual-Core Processor*
 - AMD Athlon™ Dual-Core Processor*
 - Acer InviLink™ 802.11b/g*
 - Acer InviLink™ Nplify™ 802.11b/g/Draft-N*

System Memory

- Dual-Channel DDR2 support
- Up to 2 GB of DDR2 667 MHz memory, upgradeable to 4 GB using two soDIMM modules*

Display and graphics

- 14.1" WXGA TFT LCD, 1280 x 800
- ATI Mobility Radeon™ HD 3200

Storage subsystem

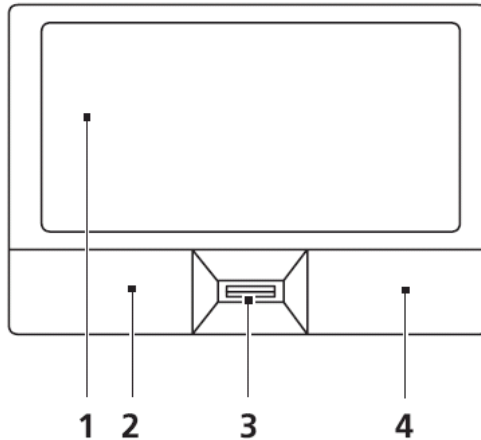
- 2.5" hard disk drive
- Optical drive options:
 - Blu-ray Disc™ /DVD-Super Multi double-layer drive
 - DVD-Super Multi double-layer drive
 - DVD/CD-RW combo drive
- 5-in-1 card reader

Audio

- Two built-in Acer 3DSonic stereo speakers
- High-definition audio support
- MS-Sound compatible
- Built-in microphone

Touchpad Basics (with fingerprint reader)

The following items show you how to use the touchpad with Acer Bio-Protection fingerprint reader:



- Move your finger across the touchpad (2) to move the cursor.
- Press the left (1) and right (4) buttons located beneath the touchpad to perform selection and execution functions. These two buttons are similar to the left and right buttons on a mouse. Tapping on the touchpad is the same as clicking the left button.
- Use Acer Bio-Protection fingerprint reader (3) supporting Acer FingerNav 4-way control function (only for certain models) or the 4-way scroll (3) button (only for certain models) to scroll up or down and move left or right a page. This fingerprint reader or button mimics your cursor pressing on the right scroll bar of Windows applications.

Function	Left Button (1)	Right Button (3)	Main touchpad (2)
Execute	Quickly click twice.		Tap twice (at the same speed as double-clicking a mouse button).
Select	Click once.		Tap once.
Drag	Click and hold, then use finger on the touchpad to drag the cursor.		Tap twice (at the same speed as double-clicking a mouse button); rest your finger on the touchpad on the second tap and drag the cursor.
Access context menu		Click once.	

NOTE: When using the touchpad, keep it - and your fingers - dry and clean. The touchpad is sensitive to finger movement; hence, the lighter the touch, the better the response. Tapping too hard will not increase the touchpad's responsiveness.

Item				
Drive Format				
Disks				
Spindle speed (RPM)				
Performance Specifications				
Buffer size				
Interface				
Max. media transfer rate (disk-buffer, Mbytes/s)				
Data transfer rate (host-buffer, Mbytes/s)				
DC Power Requirements				
Voltage tolerance				

Combo Drive Module

Item	Specification	
Vendor & model name		
Performance Specification	With CD Diskette	With DVD Diskette
Transfer rate (KB/sec)	Sustained:	Sustained:
Buffer Memory		
Interface		
Applicable disc format		
Loading mechanism		
Power Requirement		
Input Voltage		

Audio Interface

Item	Specification
Audio Controller	Realtek ALC268 for High Definition Audio Codec
Audio onboard or optional	Onboard
Mono or Stereo	Stereo
Resolution	Wide range (-80dB ~ +42dB) volume control with 1.5dB resolution of analog to analog mixer gain

Setting a Password

Follow these steps as you set the user or the supervisor password:

1. Use the ↑ and ↓ keys to highlight the Set Supervisor Password parameter and press the **Enter** key. The Set Supervisor Password box appears:

Set Supervisor Password		
Enter New Password	[]
Confirm New Password	[]

2. Type a password in the “Enter New Password” field. The password length can not exceeds 8 alphanumeric characters (A-Z, a-z, 0-9, not case sensitive). Retype the password in the “Confirm New Password” field.

IMPORTANT: Be very careful when typing your password because the characters do not appear on the screen.

3. Press **Enter**. After setting the password, the computer sets the User Password parameter to “Set”.
4. If desired, you can opt to enable the Password on boot parameter.
5. When you are done, press F10 to save the changes and exit the BIOS Setup Utility.

Removing a Password

Follow these steps:

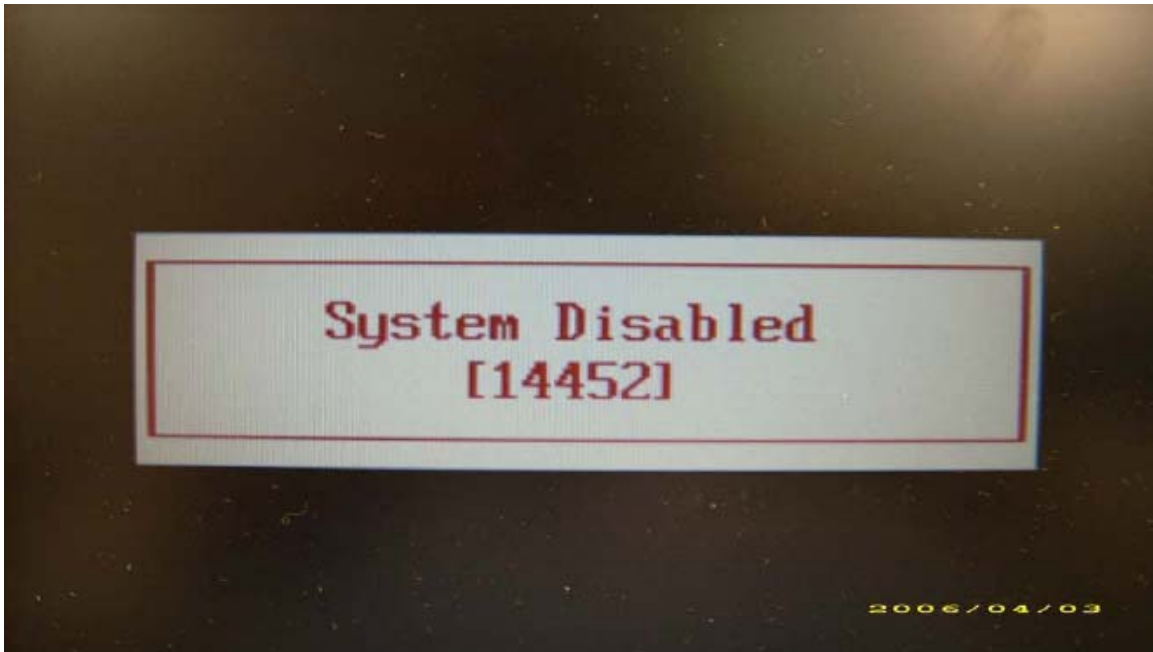
1. Use the ↑ and ↓ keys to highlight the Set Supervisor Password parameter and press the **Enter** key. The Set Password box appears:

Set Supervisor Password		
Enter current password	[]
Enter New Password	[]
Confirm New Password	[]

2. Type the current password in the Enter Current Password field and press **Enter**.
3. Press **Enter** twice **without** typing anything in the Enter New Password and Confirm New Password fields. The computer then sets the Supervisor Password parameter to “Clear”.
4. When you have changed the settings, press u to save the changes and exit the BIOS Setup Utility.

Removing BIOS Passwords:

If you key in wrong Supervisor Password three time, "System Disabled" displays on the screen. See the image below.



To clear the password, perform the following steps:

1. From a DOS prompt, Execute **clnpwd.exe**

```
d:\Clnpwd>clnpwd
ACER Clean Password Utility V1.00
Press 1 or 2 to clean any password shown as below
    1.User Password
    2.Supervisor Password

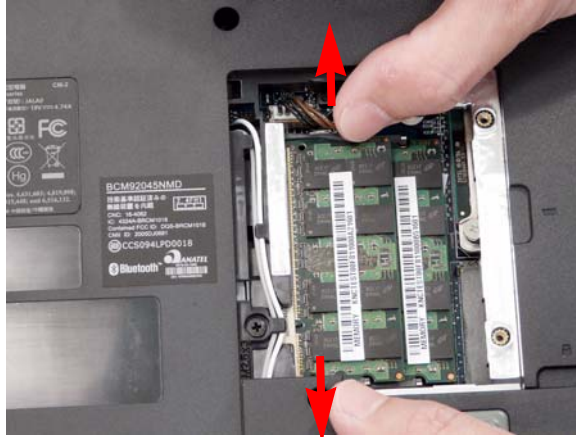
Clean User Password Successfully!
```

2. Press 1 or 2 to clean the desired password shown on the screen.

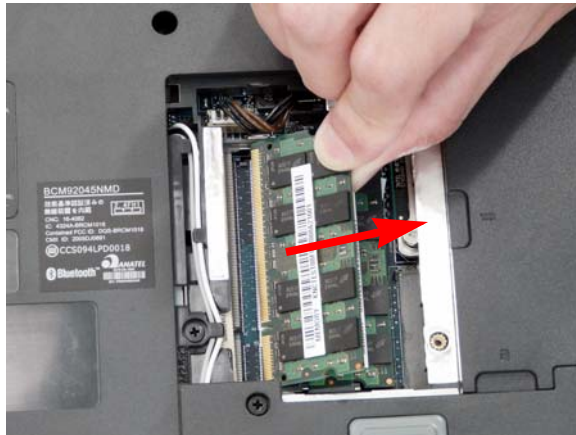
The onscreen message determines whether the function is successful or not.

Removing the DIMM Modules

1. See “Removing the Battery Pack” on page 46.
2. Remove the Memory Module cover See “Removing the Lower Covers” on page 49.
3. Push out the release latches on both sides of the DIMM socket to release the DIMM module.



4. Remove the DIMM module.




5. Repeat steps for the second DIMM module.

Removing the Keyboard

1. See "Removing the Battery Pack" on page 46.
2. See "Removing the Switch Cover" on page 59.
3. Remove the two screws securing the keyboard to the upper case.



Step	Size	Quantity	Screw Type
Keyboard	2	M2*3	

4. Lift the keyboard as shown to remove from the chassis.



5. Turn the keyboard over and pull back the securing latch to release the FFC.



Step	Size	Quantity	Screw Type
Upper Cover	M2.5*9 (NL)	1	

6. Grasp the top left corner first and pry the cover off.



7. Continue moving from left to the right corner and pry it off the lower cover.



8. Move to the bottom right corner and pry it up.

CLICK HERE TO **DOWNLOAD** THE COMPLETE MANUAL

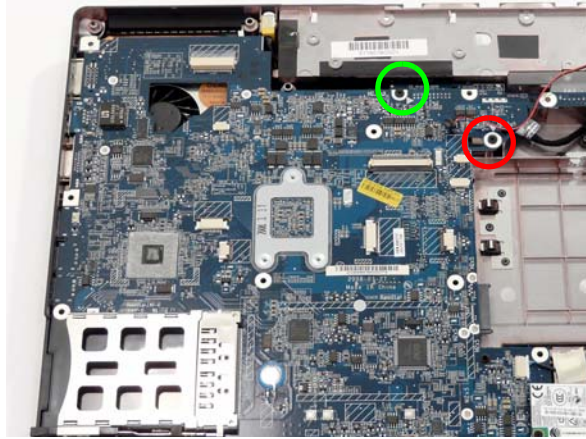
- Thank you very much for reading the preview of the manual.
- You can download the complete manual from: www.heydownloads.com by clicking the link below




- Please note: If there is no response to CLICKING the link, please download this PDF first and then click on it.

CLICK HERE TO **DOWNLOAD** THE COMPLETE MANUAL

6. Remove the two securing screws from the Mainboard.



Step	Size	Quantity	Screw Type
Mainboard	M2.5*9 (NL) Green Callout	1	redo
Mainboard	M2.5*3 (NL) Red Callout	1	

7. Lift the mainboard to expose the DC-IN jack and USB cable.

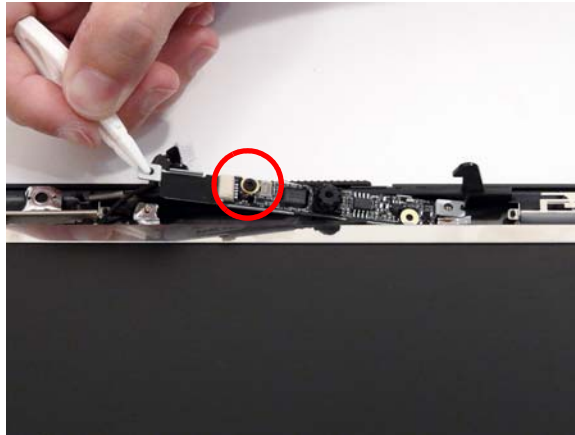


Replace

8. Remove the DC-IN jack and USB cable as shown.

Replace

4. Lift the Camera Module clear of the LCD Module and remove the single securing screw on the bracket.



Step	Size	Quantity	Screw Type
Camera Board	M2*2.3	1	

18. Replace the securing tapes from the left and right sides of the Inverter board as shown.



NOTE: Tuck the cables securely to prevent damage to the cables or module.

Replacing the LCD Bezel

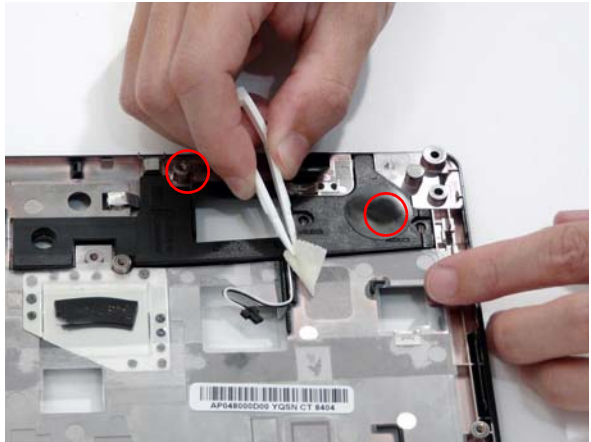
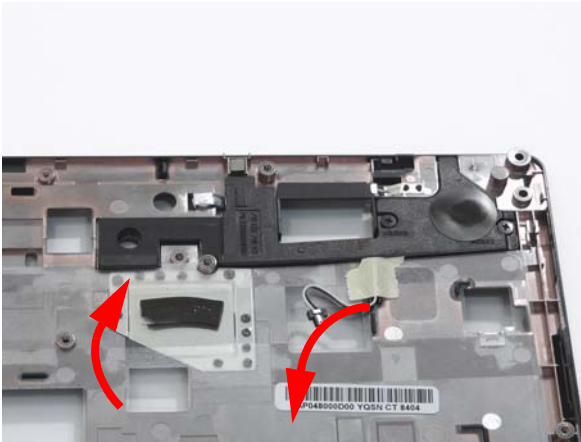
1. Align the edge of the bezel with the bottom cover and replace the LCD Module.



2. Replace the two upper and two lower bezel screw caps. Remove the four securing screws from the LCD module.

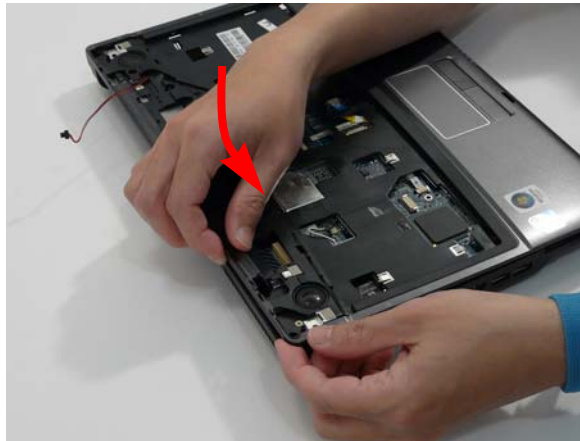


4. While holding the mylar cover back with one hand, replace the speaker cable in its housing.
5. Replace the mylar cover to secure the cable.
6. Replace the two securing screws on the left speaker.



Replacing the Upper Cover

1. Startig with the rear, align the upper cover with the lower cover, taking care to not force in place.



2. Connect the seven cables on the mainboard as shown.

Replacing the Express and SD Card Trays

1. Insert the Express Card and push into the slot until flush with the chassis cover.
2. Insert the SD Card and push into the slot until flush with the chassis cover.



HDD Not Operating Correctly

If the **HDD** does not operate correctly, perform the following actions one at a time to correct the problem.

1. Disconnect all external devices.
2. Run a complete virus scan using up-to-date software to ensure the computer is virus free.
3. Run the Windows Vista Startup Repair Utility:
 - a. insert the Windows Vista Operating System DVD in the ODD and restart the computer.
 - b. When prompted, press any key to start to the operating system DVD.
 - c. The **Install Windows** screen displays. Click **Next**.
 - d. Select **Repair your computer**.
 - e. The **System Recovery Options** screen displays. Click **Next**.
 - f. Select the appropriate operating system, and click **Next**.

NOTE: Click **Load Drivers** if controller drives are required.

- g. Select **Startup Repair**.
- h. Startup Repair attempts to locate and resolve issues with the computer.
- i. When complete, click **Finish**.

If an issue is discovered, follow the onscreen information to resolve the problem.

4. Run the Windows Memory Diagnostic Tool. For more information see Windows Help and Support.
5. Restart the computer and press F2 to enter the BIOS Utility. Check the BIOS settings are correct and that CD/DVD drive is set as the first boot device on the Boot menu.
6. Ensure all cables and jumpers on the HDD and ODD are set correctly.
7. Remove any recently added hardware and associated software.
8. Run the Windows Disk Defragmenter. For more information see Windows Help and Support.
9. Run Windows Check Disk by entering **chkdsk /r** from a command prompt. For more information see Windows Help and Support.
10. Restore system and file settings from a known good date using **System Restore**.

If the issue is not fixed, repeat the preceding steps and select an earlier time and date.
11. Replace the HDD. See "Disassembly Process" on page 44.

POST Codes Tables

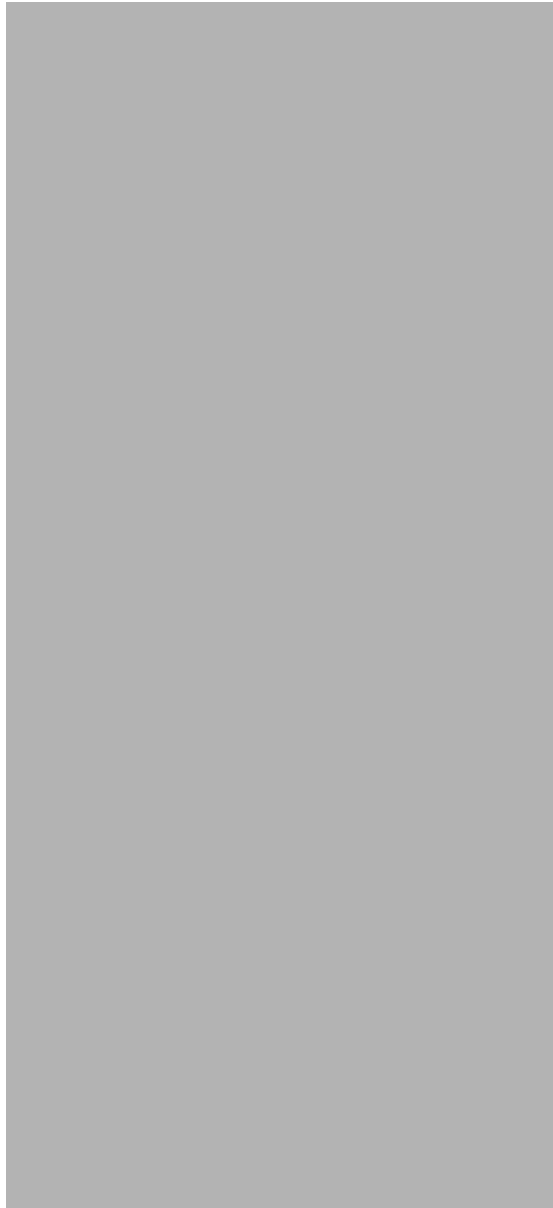
These tables describe the POST codes, drivers, and keys for the POST.

Port 80 POST Codes

The following table details the Port 80 POST codes and drivers used in the POST.

Driver Name	Port 80 Code	Driver Name	Port 80 Code
PeiEventLog	01	Cpulo	3E
OemServices	02	Cf9Reset	3F
Siolnit	03	PcRtc	40
MonoStatusCode	04	StatusCode	41
PentiumMCpuPeim	08	Variable	42
PlatformStage1	09	SmmVariable	CF
Variable	0A	EmuVariable	43
IchInit	0B	TcgDxe	A2
PlatformStage2	0D	PhysicalPresence	A3
IchSmbusArpDisabled	0E	TpmDriver	AE
ClockGen	12	TcgSmm	AE
OpPresence	13	PhysicalPresenceReadyToBoot	AE
TcgPei	14	DataHubRecordPolicy	AD
FindFv	15	Undi	86
DxeIpl	2F	SNP	90
LightMemoryInit	10	BC	91
S3ResumeSoftSmi	11	PxeDhcp4	92
Crc32SectionExtract	31	Ebc	93
OemServices	A4	IsaBus	4D
EventLog	A5	IsaSerial	4E
ScriptSave	32	Ps2Mouse	6D
AcpiS3Save	33	IdeBus	4F
SmartTimer	34	LightPciBus	50
JpegDecoder	35	UsbBot	6E
PcxDecoder	36	UsbCbi0	6F
PlatformBds	8A	UsbCbi1	70
MpCpu	37	UsbKb	71
LegacyMetronome	38	UsbMassStorage	72
FtwLite	39	UsbMouse	74
Runtime	3A	Ehci	8F
MonotonicCounter	3B	Uhci	73
WatchDogTimer	3C	UsbBus	75
SecurityStub	3D	SmmBase	C2

Lower Cover



Item	Description	Part No.	Item	Description	Part No.
1	Keyboard		8		
2			9		
3	Card Reader		10	Middle Cover	
4	Mainboard		11	Bluetooth	
5	CPU		12	Modem	
6	Thermal Module		13	Fan	
7	Thermal Module		14		

Model	RO	Country	Acer Part no	Description	CPU	LCD	DIMM 1	DIMM 2	HDD 1 (GB)	ODD	Wireless LAN	Bluetooth	Finger Print
AS5530G-823G32Bi	PA	ACLA-Spanish	LX.AR V0X.0 10	AS5530G-823G32Bi EM VHP32ATEA3 MC 82MEXTHM2 56CO 2G+1G/320/BT/8L/5R/CB_bg_FP_0. 3D_HG_ES22	ATUZ M82	N15.4 WXGA G8	SO2 GBII6	SO1 GBII6	N320 GB5.4 KS	NBDC B2XS	3rd WiFi BG	BT 2.0	AES16 10
AS5530G-823G32Bi	PA	USA	LX.AR V0X.0 06	AS5530G-823G32Bi EM VHP32ATUS1 MC 82MEXTHM2 56CO 2G+1G/320/BT/8L/5R/CB_bg_FP_0. 3D_HG_EN32	ATUZ M82	N15.4 WXGA G8	SO2 GBII6	SO1 GBII6	N320 GB5.4 KS	NBDC B2XS	3rd WiFi BG	BT 2.0	AES16 10
AS5530G-823G32Bi	PA	ACLA-Portuguese	LX.AR V0X.0 07	AS5530G-823G32Bi EM VHP32ATXC1 MC 82MEXTHM2 56CO 2G+1G/320/BT/8L/5R/CB_bg_FP_0. 3D_HG_XC22	ATUZ M82	N15.4 WXGA G8	SO2 GBII6	SO1 GBII6	N320 GB5.4 KS	NBDC B2XS	3rd WiFi BG	BT 2.0	AES16 10
AS5530G-823G32Bi	PA	Canada	LX.AR V0X.0 08	AS5530G-823G32Bi EM VHP32ATCA2 MC 82MEXTHM2 56CO 2G+1G/320/BT/8L/5R/CB_bg_FP_0. 3D_HG_FR31	ATUZ M82	N15.4 WXGA G8	SO2 GBII6	SO1 GBII6	N320 GB5.4 KS	NBDC B2XS	3rd WiFi BG	BT 2.0	AES16 10
AS5530G-701G25Mi	TWN	GCTWN	LX.AR V0X.0 11	AS5530G-701G25Mi EM VHP32ATTW 1 MC 82MEXTHM2 56CO 1*1G/250/BT/8L/5R/CB_bg_FP_0. 3D_HG_TC11	ATRM 70	N15.4 WXGA G8	SO1 GBII6	N	N250 GB5.4 KS	NSM8 XS	3rd WiFi BG	BT 2.0	AES16 10
AS5530G-702G25Mi	AAP	Japan	LX.AR V0X.0 12	AS5530G-702G25Mi EM VHP32AJP1 MC 82MEXTHM2 56CO 2*1G/250/BT/6L/5R/CB_bg_FP_0. 3D_HG_JA11	ATRM 70	N15.4 WXGA G8	SO1 GBII6	SO1 GBII6	N250 GB5.4 KS	NSM8 XS	3rd WiFi BG	BT 2.0	AES16 10
AS5530G-702G25Mi	AAP	Thailand	LX.AR V0X.0 13	AS5530G-702G25Mi EM VHP32ATTH1 MC 82MEXTHM2 56CO 1*2G/250/BT/8L/5R/CB_bg_FP_0. 3D_HG_TH22	ATRM 70	N15.4 WXGA G8	SO2 GBII6	N	N250 GB5.4 KS	NSM8 XS	3rd WiFi BG	BT 2.0	AES16 10
AS5530G-701G25Mi	TWN	GCTWN	LX.AR V0X.0 14	AS5530G-701G25Mi EM VHP32ATTW 1 MC 82MEXTHM2 56CO 1*1G/250/BT/6L/5R/CB_bg_FP_0. 3D_HG_TC11	ATRM 70	N15.4 WXGA G8	SO1 GBII6	N	N250 GB5.4 KS	NSM8 XS	3rd WiFi BG	BT 2.0	AES16 10

CLICK HERE TO **DOWNLOAD** THE COMPLETE MANUAL

- Thank you very much for reading the preview of the manual.
- You can download the complete manual from: www.heydownloads.com by clicking the link below



- Please note: If there is no response to CLICKING the link, please download this PDF first and then click on it.

CLICK HERE TO **DOWNLOAD** THE COMPLETE MANUAL