

TravelMate C110

Service Guide

Service guide files and updates are available on the CSD web; for more information, please refer to <http://csd.acer.com.tw>

CLICK HERE TO **DOWNLOAD** THE COMPLETE MANUAL

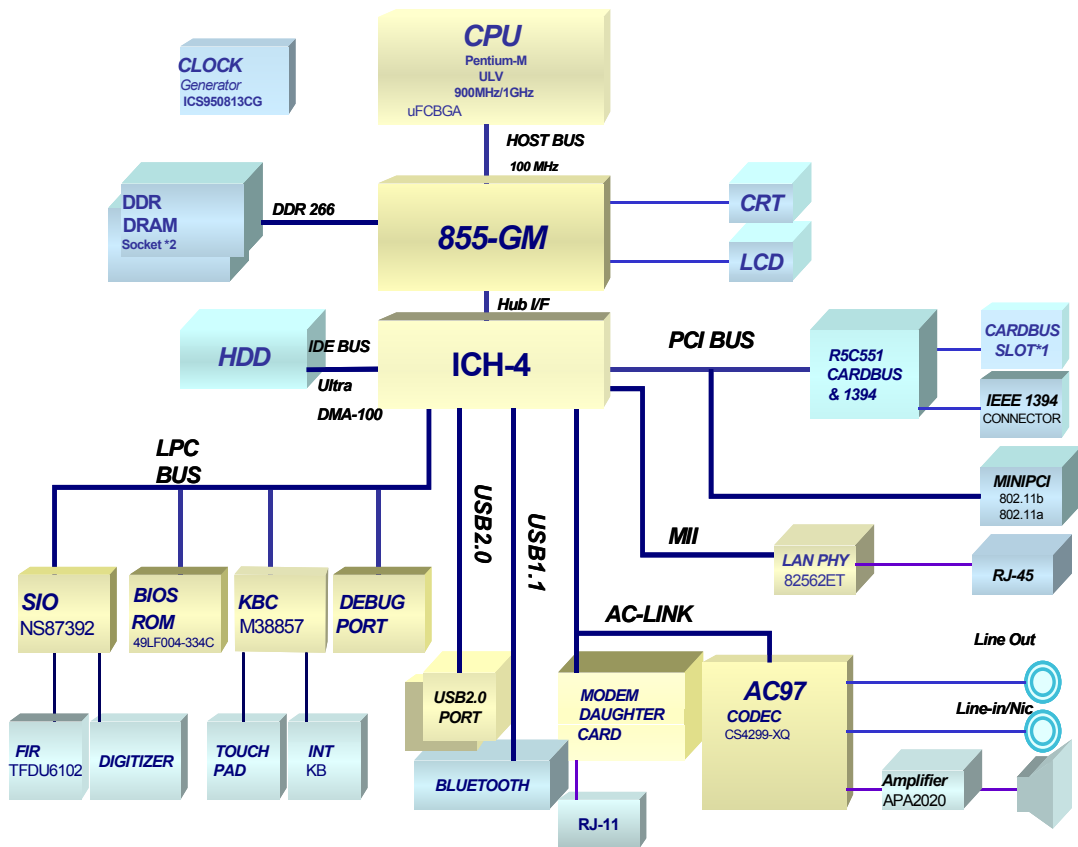
- Thank you very much for reading the preview of the manual.
- You can download the complete manual from: www.heydownloads.com by clicking the link below



- Please note: If there is no response to CLICKING the link, please download this PDF first and then click on it.

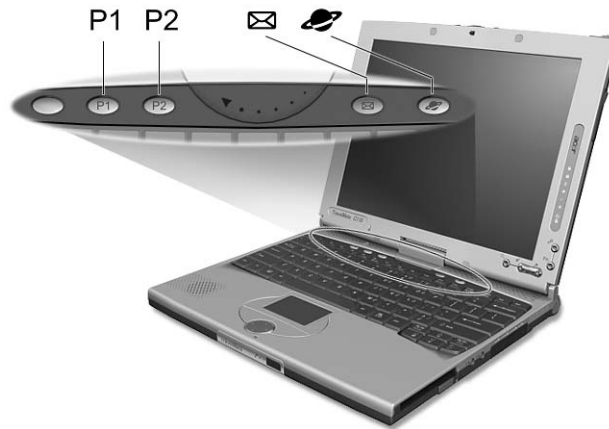
CLICK HERE TO **DOWNLOAD** THE COMPLETE MANUAL

System Block Diagram



Launch Keys

Located at the top of the keyboard are four launch keys used to launch frequently used applications



The Power and Standby status icons are visible even when you close the display cover so you can see the status of the computer while the cover is closed.

Function	Description
P1	This button is user-programmable.
P2	This button is user-programmable.
E-Mail	The mail button is used to launch the email application.
Web browser	By default, is used to launch your Internet browser.

USB Port

Item	Specification
USB Compliance Level	1.1/2.0
UHCI	USB 1.1
OHCI	USB 2.0
Number of USB port	2
Location	Right side
Serial port function control	Not available

IrDA Port

Item	Specification
IrDA FIR port controller	NS 87392 (SIO)
Number of IrDA FIR port	1
Location	Front side
IrDA FIR port function control	Not Available
IrDA FIR port	2F8
IrDA FIR port IRQ	IRQ3
ECP DMA channel	DMA channel 3
Optional IrDA FIR port DRQ	Not available

PCMCIA Port

Item	Specification
PCMCIA controller	RICOH R5C551
Supports card type	Type-II
Number of slots	One type-II
Access location	Right side
Supports ZV (Zoomed Video) port	ZV support
Supports 32 bit CardBus	Yes (IRQ10)

System Board Major Chips

Item	Controller
System core logic	855-GM
Super I/O controller	ICH4-M
Audio controller	CS4299-XQ
Video controller	Intel 855-GM
Hard disk drive controller	ICH4-M
Keyboard controller	Mitsubishi M38857
RTC	ICH4-M

Main System Settings

The Main System Settings screen allows you to set the system date and time.

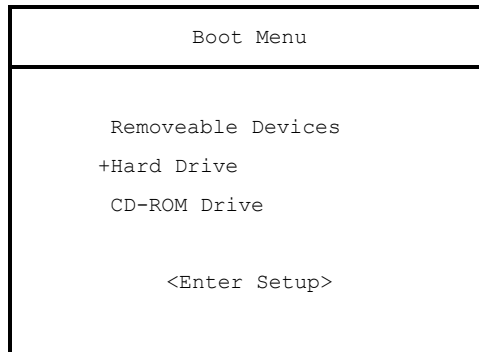
PhoenixBIOS Setup Utility			
Information	Main	Advanced Security Power Boot Exit	
System Time:	[12:00:00]	Item Specific Help	
System Date:	[01/01/2002]		
Boot Display	[Auto]	<Tab>, <Shift-Tab>, or <Enter> selects field	
Screen Expansion	[Enabled]		
QuickBoot Mode	[Enabled]		
Startup Screen	[Enabled]		
Boot on LAN	[Disabled]		
Hotkey Beep	[Enabled]		
Auto Dim	[Enabled]		
F12 Multi-Boot	[Enabled]		
F1 Help ↑↓ Select Item F5/F6 Change Values F9 Setup Defaults Esc Exit ←→ Select Menu Enter Select > Sub Menu F10 Save and Exit			

The following table describes the parameters in this screen

Parameter	Description
System Time	Sets the system time Format: HH:MM:SS (Hour : Minute : Second) <i>Help:</i> <Tab>, <Shft-Tab>, or <Enter> selects field.
System Date	Sets the system date. Format: MM/DD/YYYY (Month/Day/Year) <i>Help:</i> <Tab>, <Shift>, or <Enter> selects field.
Boot Display	Set the display output device on boot up. <i>Help:</i> Set the display output device on boot up. When set to Auto, the computer automatically determines the display device. If an external display device (e.g., monitor) is connected, it becomes the boot display. When set to Both, the computer outputs to both the LCD and the external display if one is connected. Option: Both or Auto
Screen Expansion	Options: Enable or Disable. <i>Help:</i> Options: Enable or Disable.
QuickBoot Mode	Options: Enable or Disable <i>Help:</i> Allow the system to skip certain tests while booting. This will decrease the time needed to boot the system.

Multi-Boot Menu

Users can press F12 during POST to enter the Multi Boot Selection Menu. In this menu users can change boot device without entering BIOS SETUP utility.



NOTE: * If D2D Recovery function is not available, then this item will be disappeared

NOTE: ** If users disable the "Boot from LAN" option in BIOS SETUP utility, then this item will be disappeared.

CLICK HERE TO **DOWNLOAD** THE COMPLETE MANUAL

- Thank you very much for reading the preview of the manual.
- You can download the complete manual from: www.heydownloads.com by clicking the link below



- Please note: If there is no response to CLICKING the link, please download this PDF first and then click on it.

CLICK HERE TO **DOWNLOAD** THE COMPLETE MANUAL

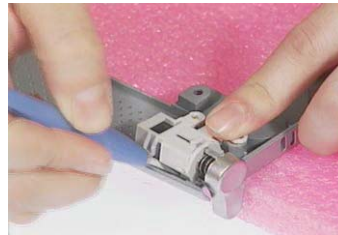
Removing the Battery Pack

1. Push the battery lock latch forward to unlock the battery.
2. Push the battery release latch to release the battery.
3. Remove the battery.



Removing the LCD Support Knobs

1. See “Removing the Battery Pack” on page 53.
2. See “Removing the Middle Covers” on page 56.
3. See “Removing the Keyboard” on page 56.
4. See “Removing the LCD Module” on page 58.
5. See “Separating the Upper Case from the Lower Case” on page 60.
6. Remove the two screws as shown, and then use a plastic flat screwdriver to help remove the left and right LCD support knobs consecutively



Keyboard or Auxiliary Input Device Check

Remove the external keyboard if the internal keyboard is to be tested.

If the internal keyboard does not work or an unexpected character appears, make sure that the flexible cable extending from the keyboard is correctly seated in the connector on the system board.

If the keyboard cable connection is correct, run the Keyboard Test. See “System Diagnostic Diskette” on page 46 for details.

If the tests detect a keyboard problem, do the following one at a time to correct the problem. Do not replace a non-defective FRU:

1. Reconnect the keyboard cables.
2. Replace the keyboard.
3. Replace the system board.

The following auxiliary input devices are supported by this computer:

- Numeric keypad
- External keyboard

If any of these devices do not work, reconnect the cable connector and repeat the failing operation.

Memory Check

Memory errors might stop system operations, show error messages on the screen, or hang the system.

1. Boot from the diagnostics diskette and start the PQA program (please refer to “System Diagnostic Diskette” on page 46).
2. Go to the diagnostic memory in the test items.
3. Press **F2** in the test items.
4. Follow the instructions in the message window.

NOTE: Make sure that the DIMM is fully installed into the connector. A loose connection can cause an error.

Power System Check

To verify the symptom of the problem, power on the computer using each of the following power sources:

1. Remove the battery pack.
2. Connect the power adapter and check that power is supplied.
3. Disconnect the power adapter and install the charged battery pack; then check that power is supplied by the battery pack.

If you suspect a power problem, see the appropriate power supply check in the following list:







- “Check the Power Adapter” on page 74
- “Check the Battery Pack” on page 75

Intermittent Problems

Intermittent system hang problems can be caused by a variety of reasons that have nothing to do with a hardware defect, such as: cosmic radiation, electrostatic discharge, or software errors. FRU replacement should be considered only when a recurring problem exists.

When analyzing an intermittent problem, do the following:

1. Run the advanced diagnostic test for the system board in loop mode at least 10 times.
2. If no error is detected, do not replace any FRU.
3. If any error is detected, replace the FRU. Rerun the test to verify that there are no more errors.

Picture	No.	Partname	Description
STYLUS			
	01	STYLUS WACOM UP-714E-36A	STYLUS PEN UP-714E-36A WACOM
LCD			
	02	LCD MODULE 10.4" XGA TOSHIBA	ASSY LCD 10.4" XGA TOSHIBA
		LCD 10.4" XGA TOSHIBA LTM10C321K V01 W/PROTECTION COVER	ASSY LCD MODULE 10.4" XGA TSB
Combo Module			
	NS	CDRW/DVD COMBO DRIVE 24X AOPEN ESV-189I 1394	COMBO 1394 24X ESV-189I NO AC
Cables			
	NS	POWER CORD 3PIN 125V	CORD 125V UL 3P K01081B1183WP
	NS	TOUCHPAD CABLE	CABLE TOUCH PAD FPC
	NS	COVER SWITCH CABLE	CABLE COVER SWITCH

Test Compatible Components

This computer's compatibility is tested and verified by Acer's internal testing department. All of its system functions are tested under Windows XP environment.

Refer to the following list of components, adapter cards and peripherals which have passed this test. Regarding configuration, combination and test procedures please refer to the TravelMate C110 Compatibility Test Report released by Acer Mobile System Testing Department.

CLICK HERE TO **DOWNLOAD** THE COMPLETE MANUAL

- Thank you very much for reading the preview of the manual.
- You can download the complete manual from: www.heydownloads.com by clicking the link below



- Please note: If there is no response to CLICKING the link, please download this PDF first and then click on it.

CLICK HERE TO **DOWNLOAD** THE COMPLETE MANUAL