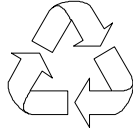


TravelMate C100

Service Guide

Service guide files and updates are available on the CSD web; for more information, please refer to <http://csd.acer.com.tw>



100% Recycled Paper

CLICK HERE TO **DOWNLOAD** THE COMPLETE MANUAL

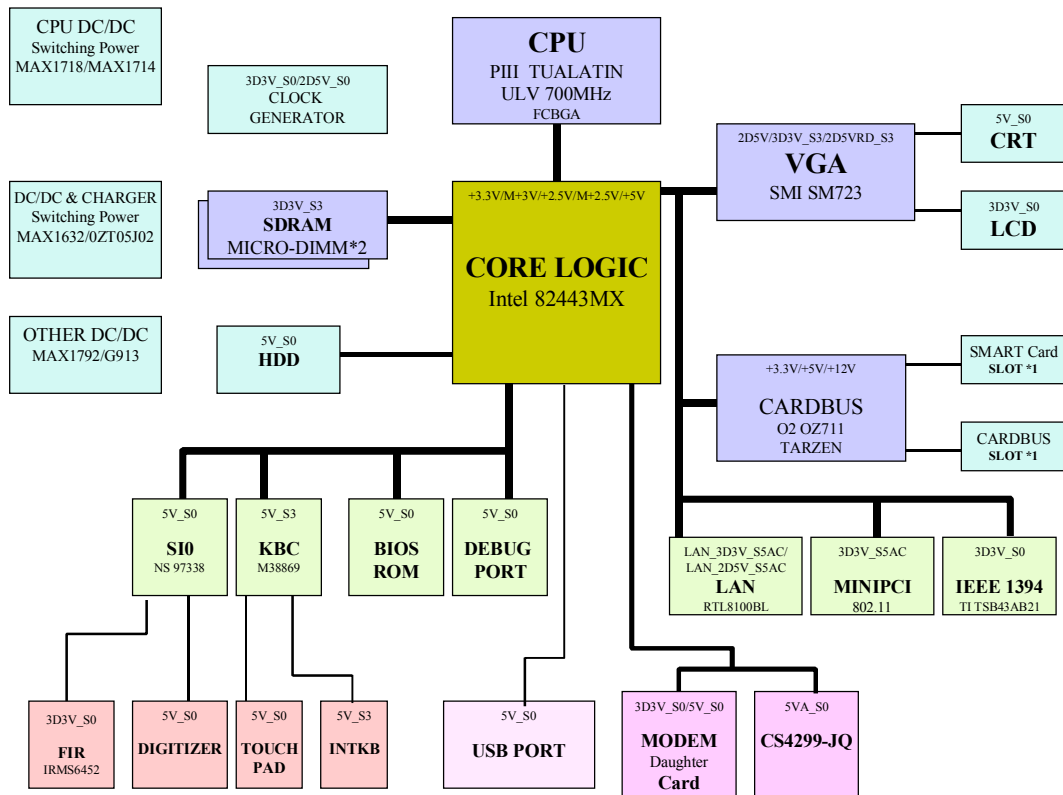
- Thank you very much for reading the preview of the manual.
- You can download the complete manual from: www.heydownloads.com by clicking the link below



- Please note: If there is no response to CLICKING the link, please download this PDF first and then click on it.

CLICK HERE TO **DOWNLOAD** THE COMPLETE MANUAL

System Block Diagram



Lock Keys

The keyboard has three lock keys which you can toggle on and off.



Lock Key	Description
Caps Lock	When Caps Lock is on, all alphabetic characters typed are in uppercase.
Num Lock (Fn-F11)	When Num Lock is on, the embedded keypad is in numeric mode. The keys function as a calculator (complete with the arithmetic operators +, -, *, and /). Use this mode when you need to do a lot of numeric data entry. A better solution would be to connect an external keypad.
Scroll Lock (Fn-F12)	When Scroll Lock is on, the screen moves one line up or down when you press the up or down arrow keys respectively. Scroll Lock does not work with some applications.

NOTE: To access the Num Lock and Scroll Lock functions, hold the Fn key down while pressing the F11 and F12 keys respectively.

Audio Interface

Item	Specification
Audio Controller	CS4299-JQ
Audio onboard or optional	Built-in
Mono or Stereo	Stereo
Resolution	20 bit stereo Digital to analog converter 18 bit stereo Analog to Digital converter
Compatibility	Microsoft PC98/PC99, AC97 2.1
Mixed sound source	Line-in, CD, Video, AUX
Voice channel	8/16-bit, mono/stereo
Sampling rate	44.1 KHz
Internal microphone	Yes
Internal speaker / Quantity	Yes

Video Interface

Item	Specification
Chip vendor	SMI
Chip name	Lynx 3DM+
Chip voltage	Core/2.5V Memory/2.5V
Supports ZV (Zoomed Video) port	No
Graph interface	PCI
Maximum resolution (LCD)	1024x768 (16 bit and 24 bit colors)
Maximum resolution (CRT)	2048x768 (16 bit colors)

Video Memory

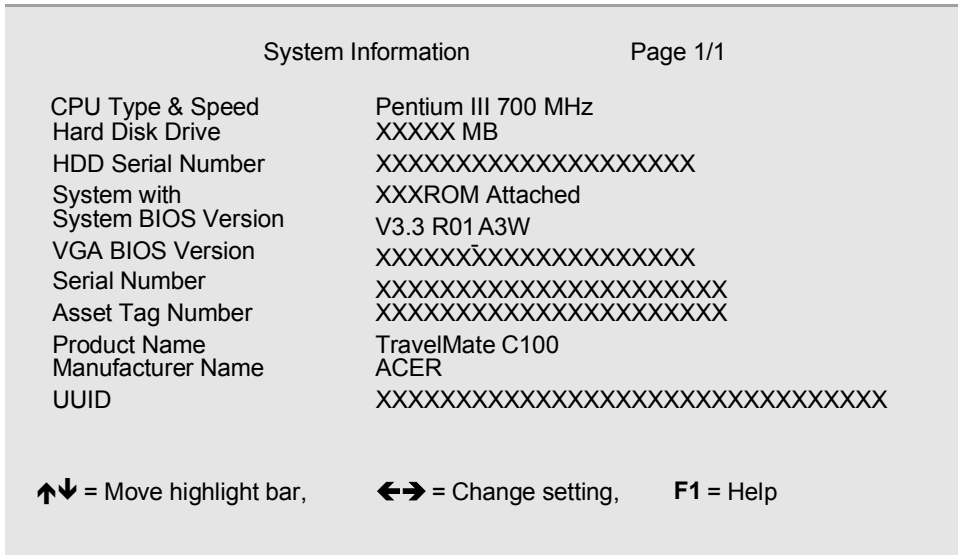
Item	Specification
Fixed or upgradeable	Fixed
Video memory size	8 MB

Video Resolutions Mode (for both LCD and CRT)

Resolution	8 bits (256 colors)	16 bits (High color)	24 bits (True color)
640x480	Yes	Yes	Yes
720x480	Yes	Yes	Yes
800x600	Yes	Yes	Yes
848x480	Yes	Yes	Yes
1024x768	Yes	Yes	Yes
1280x1024 (CRT only)	Yes	Yes	Yes
2048x768 (CRT only)	Yes	Yes	No

System Information

The System Information screen displays a summary of your computer hardware information.



NOTE: The screen above is a sample and may not reflect the actual data on your computer. “X” may refer to a series of numbers and/or characters.

The following table describes the information in this screen.

Parameter	Description
CPU Type & Speed	Display the CPU type and its speed.
Hard Disk Drive	Display the size of the Hard Disk.
HDD Serial Number	List the HDD serial Number
System with	The system will automatically detect that the media type is CD-ROM, DVD-ROM.
System BIOS Version	The current system BIOS version.
VGA BIOS Version	The current VGA BIOS version.
Serial Number	Shows the system serial number.
Asset Tag Number	Shows the asset tag number of the computer.
Product Name	Shows the official name of the product.
Manufacturer Name	Shows the manufacturer of the computer.
UUID	Shows the universally unique identifier of your computer.

The items in this screen are important and vital information about your computer. If you experience computer problems and need to contact technical support, this data helps our service personnel know more about your computer.

CLICK HERE TO **DOWNLOAD** THE COMPLETE MANUAL

- Thank you very much for reading the preview of the manual.
- You can download the complete manual from: www.heydownloads.com by clicking the link below



- Please note: If there is no response to CLICKING the link, please download this PDF first and then click on it.

CLICK HERE TO **DOWNLOAD** THE COMPLETE MANUAL

Machine Disassembly and Replacement

This chapter contains step-by-step procedures on how to disassemble the notebook computer for maintenance and troubleshooting.

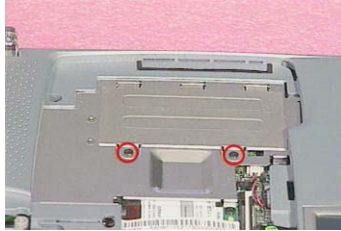
To disassemble the computer, you need the following tools:

- Wrist grounding strap and conductive mat for preventing electrostatic discharge
- Flat-bladed screw driver
- Phillips screw driver
- Tweezers
- Flat-bladed screw driver or plastic stick

NOTE: The screws for the different components vary in size. During the disassembly process, group the screws with the corresponding components to avoid mismatch when putting back the components.

Removing the DIMM Upper Plate

1. See “Removing the Battery Pack” on page 47
2. See “Removing the Middle Covers” on page 50
3. See “Removing the Keyboard” on page 50
4. Remove the two screws, and then detach the DIMM upper plate from the heat sink plate.



Removing the Internal Memory Module

1. See “Removing the Battery Pack” on page 47
2. See “Removing the Middle Covers” on page 50
3. See “Removing the Keyboard” on page 50
4. See “Removing the DIMM Upper Plate” on page 53
5. Push the latches on both sides of the socket to release the DIMM, and then remove the DIMM from the main unit.



Removing the Modem Board

1. See “Removing the Battery Pack” on page 47
2. See “Removing the Middle Covers” on page 50
3. See “Removing the Keyboard” on page 50
4. Remove the two screws, disconnect the modem cable from the modem board, and then detach the modem board from the main board

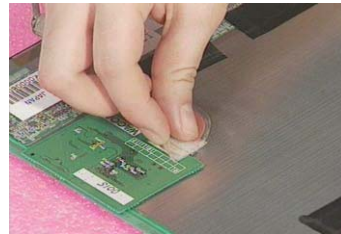




NOTE: Please do not detach the protection cover from the LCD. The intention to do so will cause the damage to the protection cover and the LCD.

Removing the Coaxial Cable

1. See “Removing the Battery Pack” on page 47
2. See “Removing the Middle Covers” on page 50
3. See “Removing the Keyboard” on page 50
4. See “Removing the LCD Module” on page 51
5. See “Removing the LCD Bezel” on page 60
6. See “Removing the LCD” on page 62
7. Remove the tape, disconnect the coaxial cable, and then remove the coaxial cable from the LCD carefully.



Removing the Sensor Board

1. See “Removing the Battery Pack” on page 47
2. See “Removing the Middle Covers” on page 50
3. See “Removing the Keyboard” on page 50
4. See “Removing the LCD Module” on page 51
5. See “Removing the LCD Bezel” on page 60
6. See “Removing the LCD” on page 62
7. Remove the two golden screws, remove the tapes and then detach the sensor board from the LCD carefully.

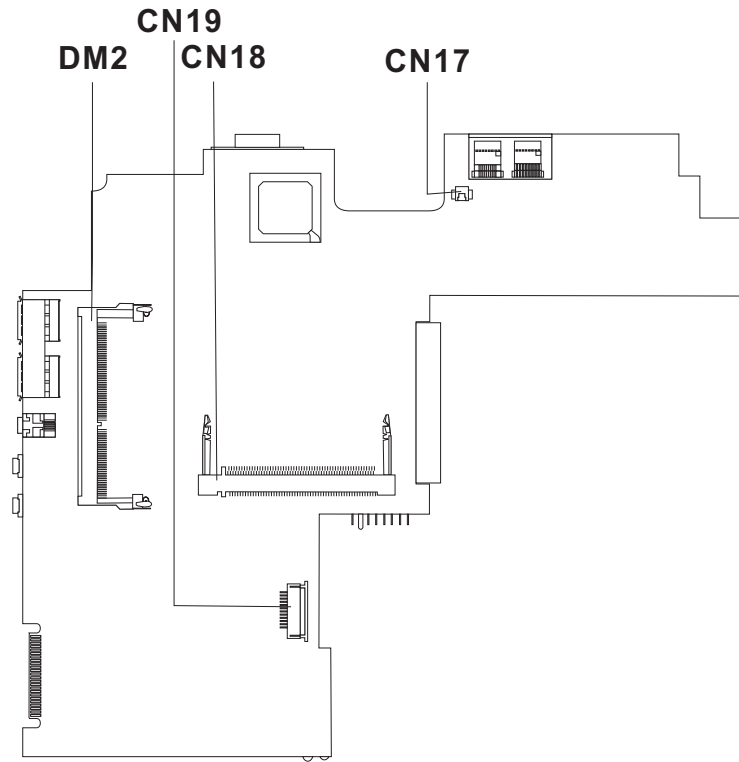
Error Message List

No beep Error Messages	FRU/Action in Sequence
No beep, power-on indicator turns off and LCD is blank.	Power source (battery pack and power adapter). See "Power System Check" on page 67. Ensure every connector is connected tightly and correctly. Reconnect the DIMM. LED board. System board.
No beep, power-on indicator turns on and LCD is blank.	Power source (battery pack and power adapter). See "Power System Check" on page 67. Reconnect the LCD connector Hard disk drive LCD inverter ID LCD cable LCD Inverter LCD System board
No beep, power-on indicator turns on and LCD is blank. But you can see POST on an external CRT.	Reconnect the LCD connectors. LCD inverter ID LCD cable LCD inverter LCD System board
No beep, power-on indicator turns on and a blinking cursor shown on LCD during POST.	Ensure every connector is connected tightly and correctly. System board
No beep during POST but system runs correctly.	Speaker System board

Error Beep List

Code	Beeps	Description
00h	Two long beeps, one short beep, and then one long beep	Success
F1h	One long, One short beeps	BIOS file size mismatch
F2h	One long, two short beeps	BIOS file reading error
D1h	Two short beeps	Floppy drive not installed

Bottom View



DM2 Memory slot (DM2)
CN19 Smart card connector

CN18 MiniPCI wireless module connector
CN17 Modem cable connector

Picture	No.	Partname	Description
	NS	SCREW	SCREW M2.5X6
	NS	SCREW	SCREW MACH WAFER M2*L4.5 ZN
	NS	SCREW	SCREW M3X4 (86.9A524.4R0)

CLICK HERE TO **DOWNLOAD** THE COMPLETE MANUAL

- Thank you very much for reading the preview of the manual.
- You can download the complete manual from: www.heydownloads.com by clicking the link below



- Please note: If there is no response to CLICKING the link, please download this PDF first and then click on it.

CLICK HERE TO **DOWNLOAD** THE COMPLETE MANUAL