

Aspire 8940 Series Service Guide

Service guide files and updates are available on the ACER/CSD web; for more information, please refer to <http://csd.acer.com.tw>

PRINTED IN TAIWAN

CLICK HERE TO **DOWNLOAD** THE COMPLETE MANUAL

- Thank you very much for reading the preview of the manual.
- You can download the complete manual from: www.heydownloads.com by clicking the link below



- Please note: If there is no response to CLICKING the link, please download this PDF first and then click on it.

CLICK HERE TO **DOWNLOAD** THE COMPLETE MANUAL

System Specifications

Features

Below is a brief summary of the computer's many features:

NOTE: Items marked with * denote only selected models.

Operating System

- Genuine Windows 7®

Platform

- Intel® Core™ i7 processor technology, featuring:
- Mobile Intel® PM55 Express Chipset

System Memory

- Dual-Channel SDRAM support
- Up to 4 GB of DDR3 1066 MHz memory, upgradeable to 8 GB using two soDIMM modules

Display

- 18.4" TFT LCD
- Resolution: 1920 x 1080 Full HD
- 16:9 aspect ratio

Graphics

- NVIDIA® GeForce® GTS 250M*
- NVIDIA® GeForce® GT 240M*

Storage subsystem

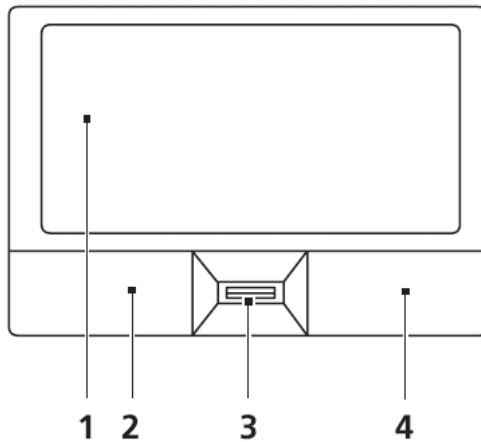
- 2.5" hard disk drive
- Optical drive options:
 - Blu-ray Disc™ Writer/DVD-Super Multi doublelayer drive
 - Blu-ray Disc™ /DVD-Super Multi double-layer drive*
 - DVD-Super Multi double-layer drive*
- 5-in-1 card reader (SD/MMC/MS/MS Pro/XD)

Audio

- Dolby®-optimized surround sound system with five built-in stereo speakers and one subwoofer supporting low frequency effects
- True5.1-channel surround sound output

TouchPad Basics

The following items show you how to use the TouchPad:



- Move your finger across the touchpad (1) to move the cursor.
- Press the left (2) and right (4) buttons located beneath the touchpad to perform selection and execution functions. These two buttons are similar to the left and right buttons on a mouse. Tapping on the touchpad is the same as clicking the left button.
- Use Acer Bio-Protection fingerprint reader (3) supporting Acer FingerNav 4-way control function (only for certain models) or the 4-way scroll (3) button (only for certain models) to scroll up or down and move left or right a page. This fingerprint reader or button mimics your cursor pressing on the right scroll bar of Windows applications.

Function	Left Button (2)	Right Button (4)	Main TouchPad (1)
Execute	Quickly click twice.		Tap twice (at the same speed as double-clicking a mouse button).
Select	Click once.		Tap once.
Drag	Click and hold, then use finger on the TouchPad to drag the cursor.		Tap twice (at the same speed as double-clicking a mouse button); rest your finger on the TouchPad on the second tap and drag the cursor.
Access context menu		Click once.	

NOTE: When using the TouchPad, keep it - and your fingers - dry and clean. The TouchPad is sensitive to finger movement; hence, the lighter the touch, the better the response. Tapping too hard will not increase the TouchPad's responsiveness.

Hard Disk Drive Interface)

Item	Specification		
Vendor	Seagate		
Model Name	ST9160314AS	ST9250315AS	ST9320325AS
Capacity (MB)	160	250	320
Bytes per sector	512		
Data heads	2	2	3
Drive Format			
Disks	1	1	2
Spindle speed (RPM)	5,400		
Performance Specifications			
Buffer size	8MB		
Interface	SATA		
Internal transfer rate (Mbits/sec max)	830		
I/O data transfer rate (Mbytes/sec max)	300		
DC Power Requirements			
Voltage tolerance	5V(DC) +/- 5%		

System Utilities

BIOS Setup Utility

The BIOS Setup Utility is a hardware configuration program built into your computer's BIOS (Basic Input/Output System).

Your computer is already properly configured and optimized, and you do not need to run this utility. However, if you encounter configuration problems, you may need to run Setup. Please also refer to Chapter 4 Troubleshooting when problem arises.

To activate the BIOS Utility, press **F2** during POST (when "Press <F2> to enter Setup" message is prompted on the bottom of screen).

Press **F2** to enter setup. The default parameter of F12 Boot Menu is set to "disabled". If you want to change boot device without entering BIOS Setup Utility, please set the parameter to "enabled".

Press <F12> during POST to enter multi-boot menu. In this menu, user can change boot device without entering BIOS SETUP Utility.

Navigating the BIOS Utility

There are six menu options: Information, Main, Advanced, Security, Boot, and Exit.

Follow these instructions:

- To choose a menu, use the left and right arrow keys.
- To choose an item, use the up and down arrow keys.
- To change the value of a parameter, press **F5** or **F6**.
- A plus sign (+) indicates the item has sub-items. Press **Enter** to expand this item.
- Press **Esc** while you are in any of the menu options to go to the Exit menu.
- In any menu, you can load default settings by pressing **F9**. You can also press **F10** to save any changes made and exit the BIOS Setup Utility.

NOTE: You can change the value of a parameter if it is enclosed in square brackets. Navigation keys for a particular menu are shown on the bottom of the screen. Help for parameters are found in the Item Specific Help part of the screen. Read this carefully when making changes to parameter values. **Please note that system information is subject to different models.**

4. In flash BIOS, the message **Please do not remove AC Power Source** displays.

NOTE: If the AC power is not connected, the following message displays.

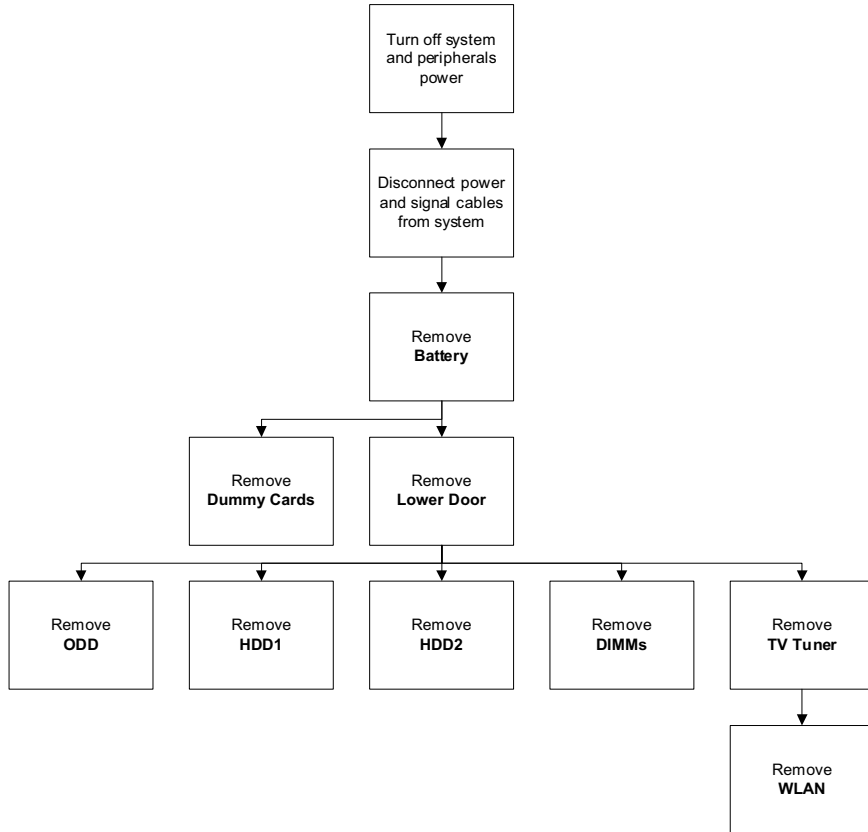


Plug in the AC power to continue.

5. Flash is complete when the message Flash programming complete displays.

External Module Disassembly Process

External Modules Disassembly Flowchart




Screw List

Step	Screw	Quantity	Part No.
ODD Module	M2.5*4	1	86.D01V7.001
ODD Bracket	M2*3	2	86.S0207.001
HDD1 Carrier	M3*3	2	86.A03V7.006
HDD2 Carrier	M3*3	2	86.A03V7.006
TV Tuner	M2*3	2	86.S0207.001
WLAN Module	M2*3	2	86.S0207.001

4. Remove the two screws securing the hard disk to the carrier.



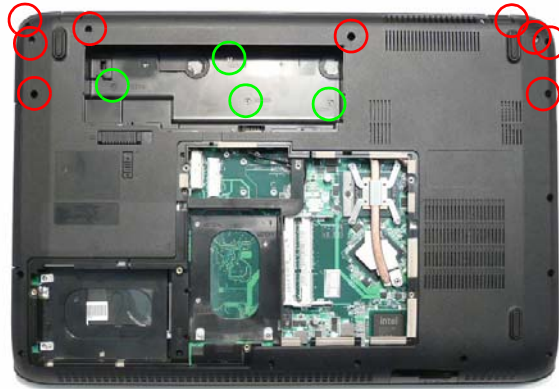
Step	Size	Quantity	Screw Type
HDD2 Carrier	M3*3	2	



5. Remove the HDD from the carrier.



Removing the Switch Cover

1. See "Removing the Battery Pack" on page 52.
2. Turn the computer over. Remove the thirteen screws securing the Switch Cover to the Upper Cover.



Step	Size	Quantity	Screw Type
Switch Cover (red callout)	M2.5*6.5	9	
Switch Cover (green callout)	M2.5*4	4	

IMPORTANT: Do not lift the Switch Cover away from the computer; the Power Board FFC is still connected.

3. Turn the computer over and open the LCD Panel. Lift the Switch Cover, rear edge first, as shown.

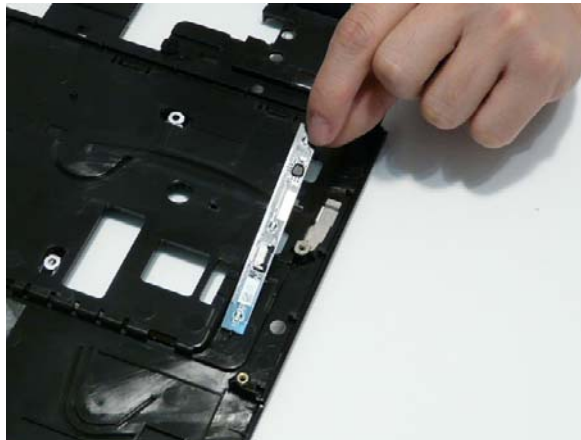


Removing the Launch Board

1. See "Removing the Upper Cover" on page 77.
2. Turn the Upper Cover over. Open the locking latch on the FFC and disconnect it from the Launch Board.



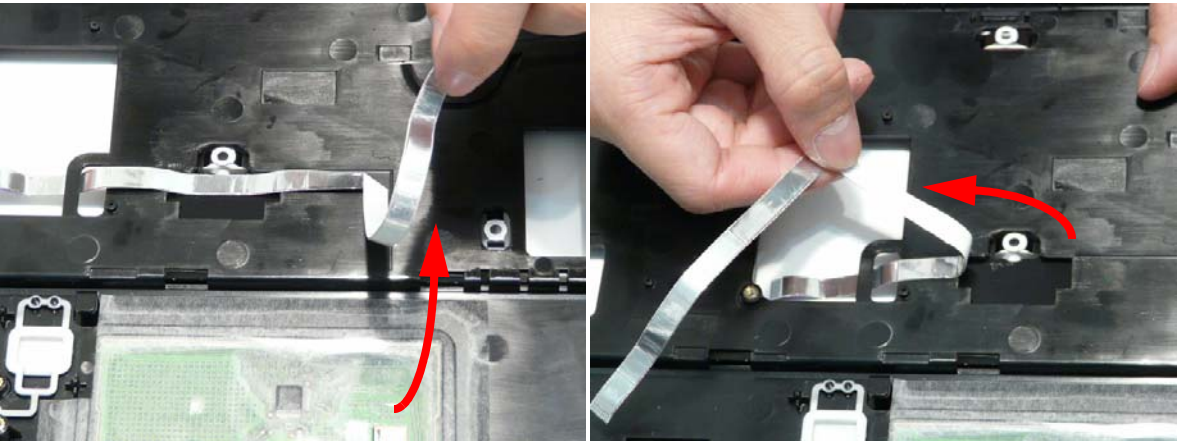
3. Remove the Launch Board from the Upper Cover



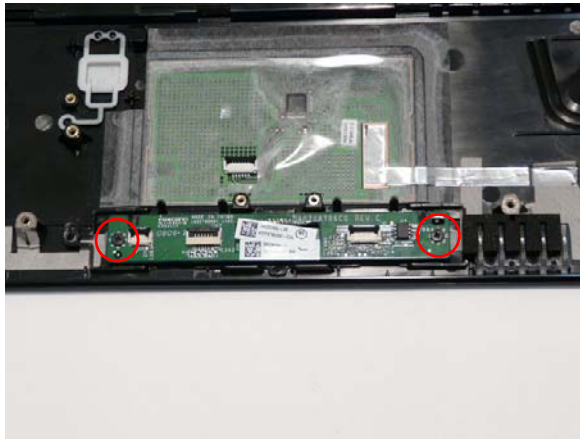
5. Open the locking latch on the FFC and disconnect it from the TouchPad Board.




6. Remove the FFC from the Upper Cover as shown.



7. Remove the two screws securing the TouchPad Board in place.




Step	Size	Quantity	Screw Type
Finger Print Reader	M2*3	2	

Removing the Kensington Lock Bracket

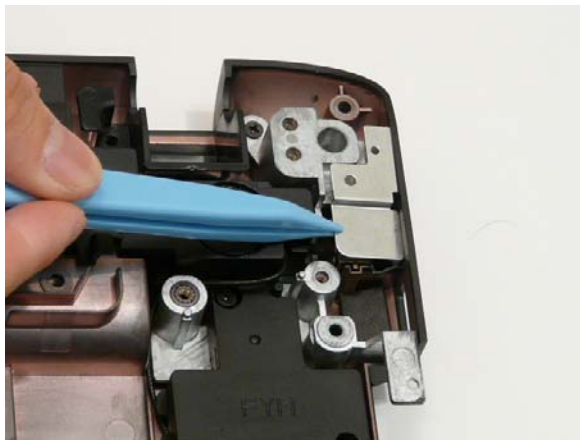
1. See "Removing the Upper Cover" on page 77.
2. Remove the single screw securing the Kensington Lock Bracket to the Lower Cover.



Step	Size	Quantity	Screw Type
Kensington Lock Bracket	M2*3	1	

3. Lift the bracket clear of the Lower Cover.

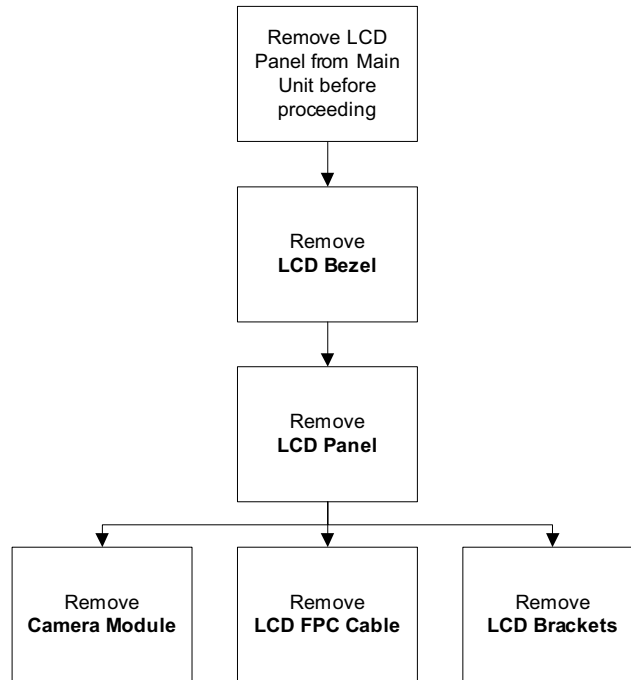
NOTE: The TV Tuner Antenna located under the bracket may lift away with the bracket.



LCD Module Disassembly Process

The Aspire 8940 ships with either a Standard Bezel or Flush Bezel with glass panel LCD Module. The following sections detail the two distinct procedures, beginning with the Standard Bezel detailed below.

Standard Bezel LCD Module Disassembly Flowchart




Screw List

Step	Screw	Quantity	Part No.
LCD Bezel	M2.5*4	2	86.N1407.003
	M2.5*5	2	86.ARE07.004
LCD Panel	M2.5*4	6	86.N1407.003
	M2*3	1	86.S0207.001
LCD Brackets	M2*3	8	86.S0207.001

Removing the Flush LCD Bezel Cap

- 1. See "Removing the LCD Module" on page 74.
- 2. Remove the two screw caps and screws securing the Bezel Cap to the LCD Module.



Step	Size	Quantity	Screw Type
LCD Bezel Cap	M2.5*4	2	

- 3. Pinch the right hinge cover as shown to release the internal securing pins. Lift the right side of the Bezel Cap as shown.



CLICK HERE TO **DOWNLOAD** THE COMPLETE MANUAL

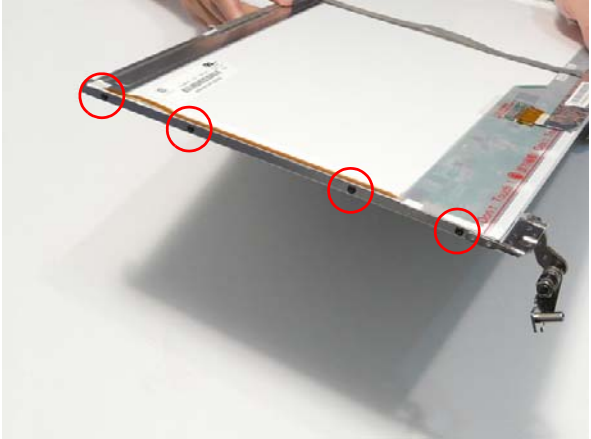
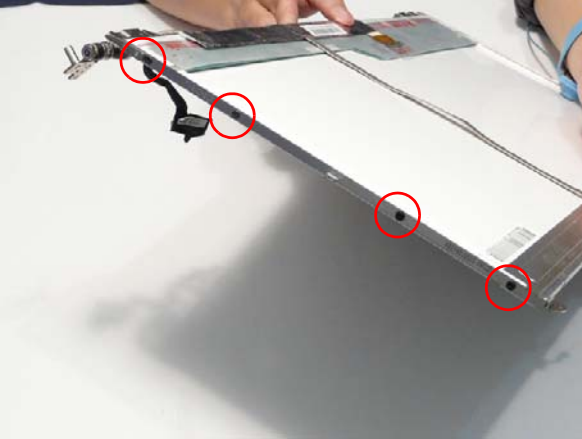
- Thank you very much for reading the preview of the manual.
- You can download the complete manual from: www.heydownloads.com by clicking the link below



- Please note: If there is no response to CLICKING the link, please download this PDF first and then click on it.

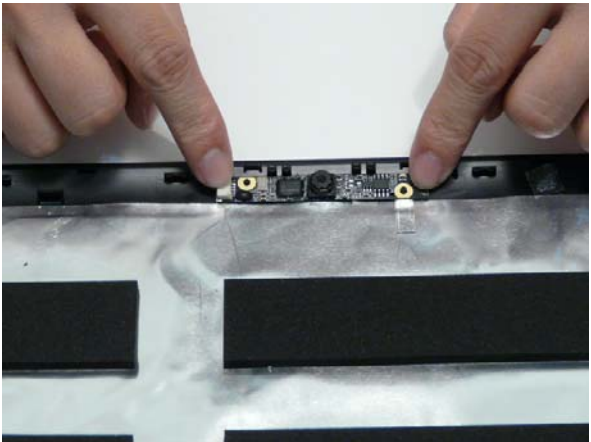
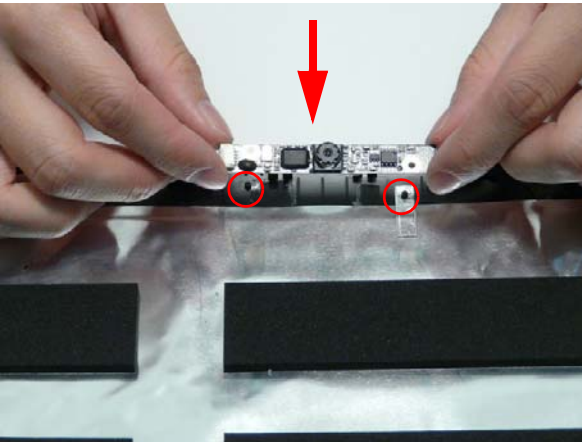
CLICK HERE TO **DOWNLOAD** THE COMPLETE MANUAL

4. Align the LCD brackets with the screw holes on the panel. Replace the eight screws (four on each side) in the brackets as shown.

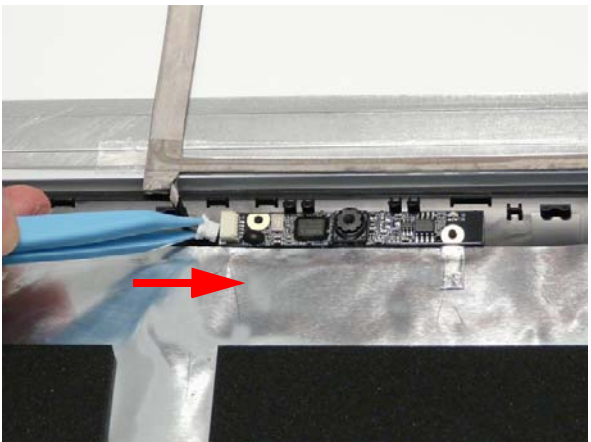


5. Align the Camera Board with the locating pins on the LCD Module and place the board as shown.

6. Press down as shown to secure the board in place with adhesive.



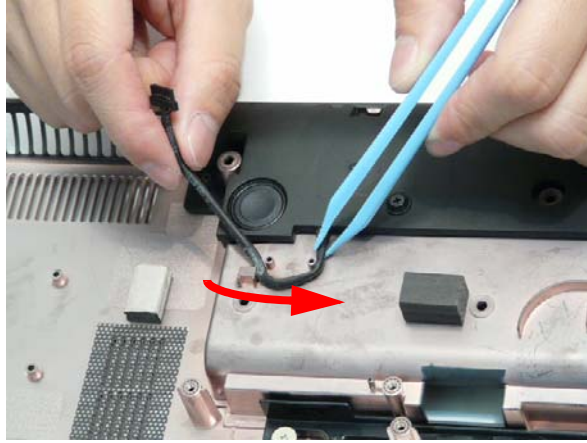
7. Place the LCD Panel adjacent to the LCD Module as shown and connect the Camera cable to the Camera Module.



3. Press down around the perimeter of the bezel to secure it in place.



3. Insert the Subwoofer cable into the cable channel. Ensure that the cable passes under all cable clips.



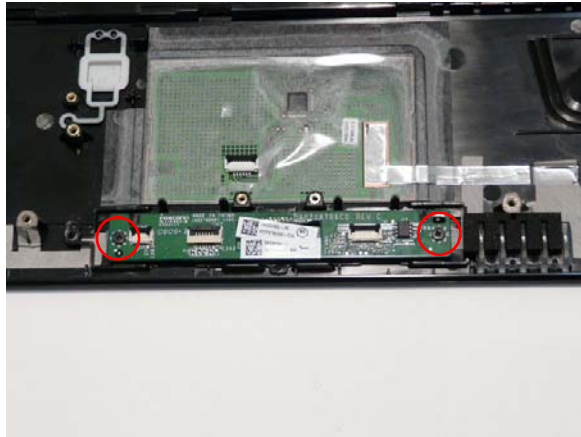
Replacing the TouchPad Board


IMPORTANT: The TouchPad is supplied as part of the Upper Cover. If the TouchPad is defective, replace the entire Upper Cover.

1. Insert the board into the Upper Cover. Take care to align the mounting pins with the holes on the board.



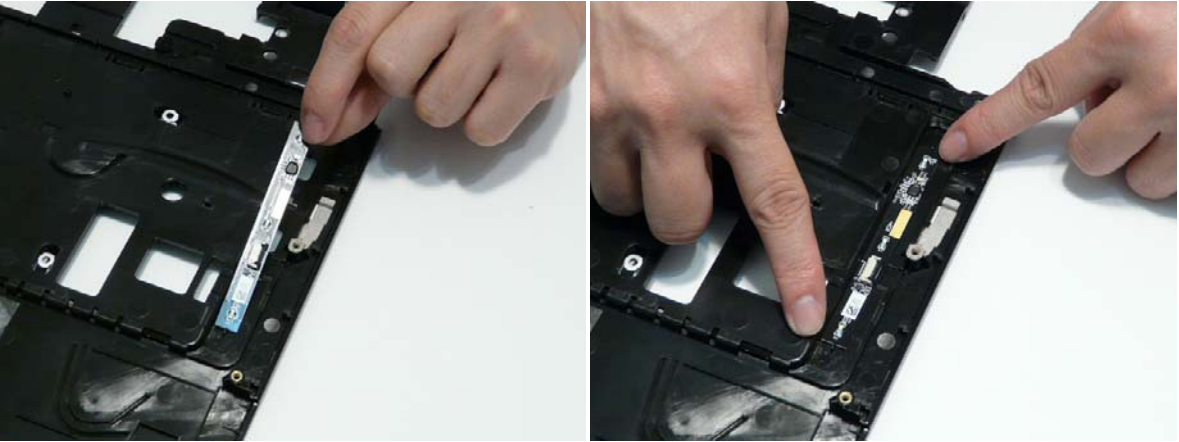
2. Remove the two screws securing the TouchPad Board in place.



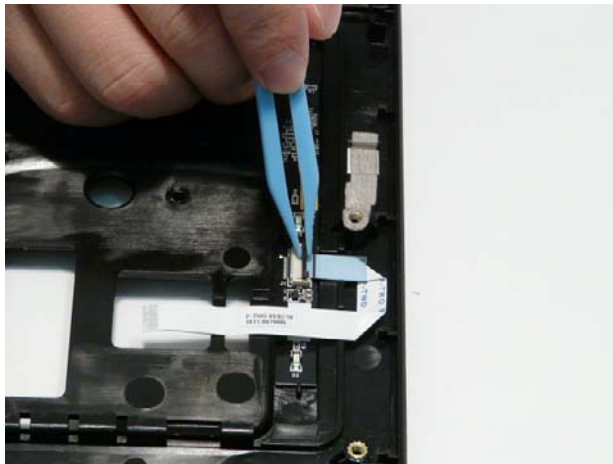
Step	Size	Quantity	Screw Type
Finger Print Reader	M2*3	2	

Replacing the Launch Board

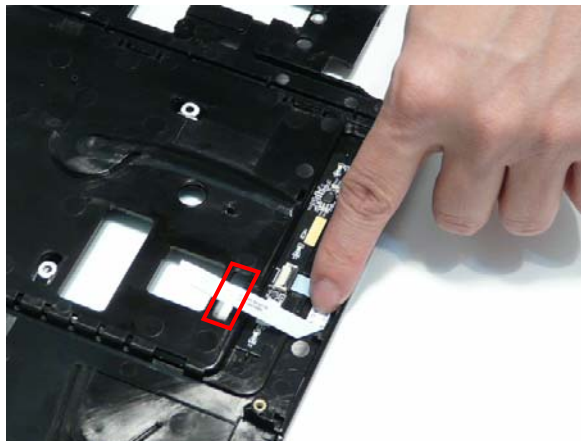
1. Place the Launch Board into the Upper Cover, taking care to align the pins.

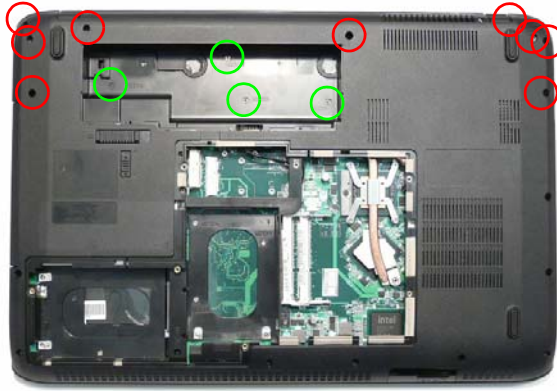




2. Connect the Mainboard FFC to the Launch Board and close the locking latch.



3. Press the FFC onto the adhesive on the Upper Cover to secure it in place and pass the FFC through the opening on the Upper Cover as indicated





Step	Size	Quantity	Screw Type
Switch Cover (red callout)	M2.5*6.5	9	
Switch Cover (green callout)	M2.5*4	4	

Troubleshooting

Common Problems

Use the following procedure as a guide for computer problems.

NOTE: The diagnostic tests are intended to test only Acer products. Non-Acer products, prototype cards, or modified options can give false errors and invalid system responses.

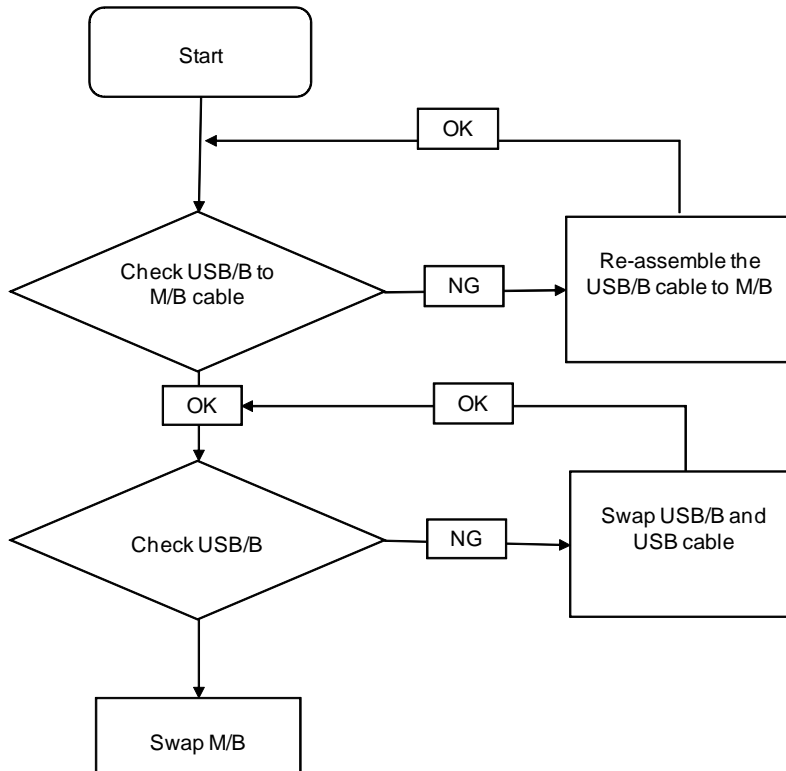
1. Obtain the failing symptoms in as much detail as possible.
2. Verify the symptoms by attempting to re-create the failure by running the diagnostic test or by repeating the same operation.
3. Use the following table with the verified symptom to determine which page to go to.

Symptoms (Verified)	Go To
Power On Issue	Page 192
No Display Issue	Page 193
Random Loss of BIOS Settings	Page 194
LCD Failure	Page 195
Internal Keyboard Failure	Page 196
TouchPad Failure	Page 197
Internal Speaker Failure	Page 198
Internal Microphone Failure	Page 199
HDD Failure	Page 200
USB (Right side) Failure	Page 201
Other Functions Failure	Page 201
Motherboard CMOS discharge	Page 201
Intermittent Failures	Page 201
Undermined Failures	Page 202

4. If the Issue is still not resolved, see "Online Support Information" on page 265.

USB (Right Up/Down Side) Failure

If the right-side **USB** fails, perform the following actions one at a time to correct the problem. Do not replace non-defective FRUs:



Other Failures

If the CRT Switch, Dock, LAN Port, external MIC or Speakers, PCI Express Card, 5-in-1 Card Reader or Volume Wheel fail, perform the following general steps to correct the problem. Do not replace non-defective FRUs:

1. Check Drive whether is OK.
2. Check Test Fixture is ok.
3. Swap M/B to Try.

Intermittent Problems

Intermittent system hang problems can be caused by a variety of reasons that have nothing to do with a hardware defect, such as: cosmic radiation, electrostatic discharge, or software errors. FRU replacement should be considered only when a recurring problem exists.

When analyzing an intermittent problem, do the following:

1. Run the advanced diagnostic test for the system board in loop mode at least 10 times.
2. If no error is detected, do not replace any FRU.
3. If any error is detected, replace the FRU. Rerun the test to verify that there are no more errors.

FRU (Field Replaceable Unit) List

This chapter gives you the FRU (Field Replaceable Unit) listing in global configurations of Aspire 8940. Refer to this chapter whenever ordering for parts to repair or for RMA (Return Merchandise Authorization).

Please note that WHEN ORDERING FRU PARTS, you should check the most up-to-date information available on your regional web or channel. For whatever reasons a part number change is made, it will not be noted on the printed Service Guide. For ACER AUTHORIZED SERVICE PROVIDERS, your Acer office may have a DIFFERENT part number code from those given in the FRU list of this printed Service Guide. You MUST use the local FRU list provided by your regional Acer office to order FRU parts for repair and service of customer machines.

NOTE: To scrap or to return the defective parts, you should follow the local government ordinance or regulations on how to dispose it properly, or follow the rules set by your regional Acer office on how to return it.

Category	Description	Acer PN.
Mainboard		
	MAINBOARD PM55 DIS W/CARD READER EXPRESS CARD W/O CPU RAM	MB.PJJ06.001
Memory		
	Memory MICRON SO-DIMM DDRIII 1066 2GB MT16JSF25664HY-1G1D1 LF 128*8 0.07um	KN.2GB04.004
	Memory ELPIDA SO-DIMM DDRIII 1066 2GB EBJ21UE8BAU0-AE-E LF 128*8 0.07um	KN.2GB09.002
	Memory SAMSUNG SO-DIMM DDRIII 1066 2GB M471B5673DZ1-CF8 LF	KN.2GB0B.005
	Memory HYNIX SO-DIMM DDRIII 1066 1GB HMT112S6AFP6C-G7N0 LF 64*16 0.065um	KN.1GB0G.019
Thermal Module		
	THERMAL MODULE FOR MXM	60.PJJ07.006
	VGA HEATSINK	33.PDA07.007
Speaker		
	SPEAKER W/SUB-WOOFER	23.PDA07.001
Remote Control		
	FOMOSA21 REMOTE CONTROLLER RC804V-B EU	RT.22700.008
	FORMOSA21 REMOTE CONTROLLER RC804V-B TC	RT.22700.009
	FORMOSA21 REMOTE CONTROLLER RC804V-B SC	RT.22700.010
	FORMOSA21 REMOTE CONTROLLER RC804V-B EN	RT.22700.011
Miscellaneous		
	NAME PLATE AS8940G	40.PJJ07.001
	LCD SCREW RUBBER	47.PDA07.001
	BASE FOOT RUBBER LONG	47.PDA07.002
	BASE FOOT RUBBER SHORT	47.PDA07.003
	UPPER CASE RUBBER	47.PDA07.004
	CCD RUBBER-R	47.PDA07.005

Model	RO	Country	Acer Part No	Description	CPU
AS8940G-904G48Mn	WW	WW	S2.PH4 0X.001	AS8940G-904G48Mn VHP32ATWW3 MC N10PGS1GBTCFbkQ_V3 2*2G/320+160/BT/8L/5R/CBUL_n2_DVBT U/ VHF_FP_1.0D_GEb_TC11	C2QQ9000

Model	LCD	VGA Chip	VRAM 1	Memory 1	Memory 2
AS8940G-724G50Bi	NLED18.4W UXGAGL	N10EGE	1G-DDR3 (64*16*8)	SO2GBIII10	SO2GBIII10
AS8940G-724G50Mn	NLED18.4W UXGAGL	N10EGE	1G-DDR3 (64*16*8)	SO2GBIII10	SO2GBIII10
AS8940G-724G50Bn	NLED18.4W UXGAGL	N10EGE	1G-DDR3 (64*16*8)	SO2GBIII10	SO2GBIII10
AS8940G-724G64Bn	NLED18.4W UXGAGL	N10EGE	1G-DDR3 (64*16*8)	SO2GBIII10	SO2GBIII10
AS8940G-724G100Wn	NLED18.4W UXGAGL	N10EGE	1G-DDR3 (64*16*8)	SO2GBIII10	SO2GBIII10
AS8940G-724G100Wn	NLED18.4W UXGAGL	N10EGE	1G-DDR3 (64*16*8)	SO2GBIII10	SO2GBIII10
AS8940G-724G50Bn	NLED18.4W UXGAGL	N10EGE	1G-DDR3 (64*16*8)	SO2GBIII10	SO2GBIII10
AS8940G-824G100Wn	NLED18.4W UXGAGL	N10EGE	1G-DDR3 (64*16*8)	SO2GBIII10	SO2GBIII10
AS8940G-724G57Mn	NLED18.4W UXGAGL	N10EGE	1G-DDR3 (64*16*8)	SO2GBIII10	SO2GBIII10
AS8940G-724G100Wn	NLED18.4W UXGAGL	N10EGE	1G-DDR3 (64*16*8)	SO2GBIII10	SO2GBIII10
AS8940G-724G100Wn	NLED18.4W UXGAGL	N10EGE	1G-DDR3 (64*16*8)	SO2GBIII10	SO2GBIII10
AS8940G-824G100Wn	NLED18.4W UXGAGL	N10EGE	1G-DDR3 (64*16*8)	SO2GBIII10	SO2GBIII10
AS8940G-724G100Bn	NLED18.4W UXGAGL	N10EGE	1G-DDR3 (64*16*8)	SO2GBIII10	SO2GBIII10
AS8940G-824G50Bn	NLED18.4W UXGAGL	N10EGE	1G-DDR3 (64*16*8)	SO2GBIII10	SO2GBIII10
AS8940G-824G100Mn	NLED18.4W UXGAGL	N10EGE	1G-DDR3 (64*16*8)	SO2GBIII10	SO2GBIII10
AS8940G-824G82Mn	NLED18.4W UXGAGL	N10EGE	1G-DDR3 (64*16*8)	SO2GBIII10	SO2GBIII10
AS8940G-724G100Wn	NLED18.4W UXGAGL	N10PGS	1G-DDR3 (64*16*8)	SO2GBIII10	SO2GBIII10
AS8940G-724G50Wn	NLED18.4W UXGAGL	N10PGS	1G-DDR3 (64*16*8)	SO2GBIII10	SO2GBIII10
AS8940G-724G50Wn	NLED18.4W UXGAGL	N10PGS	1G-DDR3 (64*16*8)	SO2GBIII10	SO2GBIII10
AS8940G-724G100Wn	NLED18.4W UXGAGL	N10PGS	1G-DDR3 (64*16*8)	SO2GBIII10	SO2GBIII10
AS8940G-724G100Wn	NLED18.4W UXGAGL	N10PGS	1G-DDR3 (64*16*8)	SO2GBIII10	SO2GBIII10

BOM_Name	BRAND	Type	Description
AS8940G_N10PGS1 GBCFPbkQ_V3	SANYO	8CELL2.4	Battery SANYO AS-2007B Li-Ion 4S2P SANYO 8 cell 4800mAh Main COMMON
AS8940G_N10PGS1 GBCFPbkQ_V3	SONY	8CELL2.4	Battery SONY AS-2007B Li-Ion 4S2P SONY 8 cell 4800mAh Main COMMON
AS8940G_N10PGS1 GBCFPbkQ_V3	SIMPLO	8CELL2.4	Battery SIMPLO AS-2007B Li-Ion 4S2P PANASONIC 8 cell 4800mAh Main COMMON PSS
AS8940G_N10PGS1 GBCFbkQ_V3	SANYO	8CELL2.4	Battery SANYO AS-2007B Li-Ion 4S2P SANYO 8 cell 4800mAh Main COMMON
AS8940G_N10PGS1 GBCFbkQ_V3	SONY	8CELL2.4	Battery SONY AS-2007B Li-Ion 4S2P SONY 8 cell 4800mAh Main COMMON
AS8940G_N10PGS1 GBCFbkQ_V3	SIMPLO	8CELL2.4	Battery SIMPLO AS-2007B Li-Ion 4S2P PANASONIC 8 cell 4800mAh Main COMMON PSS
AS8940G_N10PGS1 GBTCFPbkQ_V3	SANYO	8CELL2.4	Battery SANYO AS-2007B Li-Ion 4S2P SANYO 8 cell 4800mAh Main COMMON
AS8940G_N10PGS1 GBTCFPbkQ_V3	SONY	8CELL2.4	Battery SONY AS-2007B Li-Ion 4S2P SONY 8 cell 4800mAh Main COMMON
AS8940G_N10PGS1 GBTCFPbkQ_V3	SIMPLO	8CELL2.4	Battery SIMPLO AS-2007B Li-Ion 4S2P PANASONIC 8 cell 4800mAh Main COMMON PSS
AS8940G_N10PGS1 GBTCFbkQ_V3	SANYO	8CELL2.4	Battery SANYO AS-2007B Li-Ion 4S2P SANYO 8 cell 4800mAh Main COMMON
AS8940G_N10PGS1 GBTCFbkQ_V3	SONY	8CELL2.4	Battery SONY AS-2007B Li-Ion 4S2P SONY 8 cell 4800mAh Main COMMON
AS8940G_N10PGS1 GBTCFbkQ_V3	SIMPLO	8CELL2.4	Battery SIMPLO AS-2007B Li-Ion 4S2P PANASONIC 8 cell 4800mAh Main COMMON PSS
Bluetooth			
AS8940G_N10EGE1 GBCFPbkQ_V3	Foxconn	BT 2.1	Foxconn Bluetooth BRM 2046 BT2.1 (T60H928.33) f/ w:861
AS8940G_N10EGE1 GBTCFPbkQ_V3	Foxconn	BT 2.1	Foxconn Bluetooth BRM 2046 BT2.1 (T60H928.33) f/ w:861
AS8940G_N10PGS1 GBCFPbkQ_V3	Foxconn	BT 2.1	Foxconn Bluetooth BRM 2046 BT2.1 (T60H928.33) f/ w:861
AS8940G_N10PGS1 GBCFbkQ_V3	Foxconn	BT 2.1	Foxconn Bluetooth BRM 2046 BT2.1 (T60H928.33) f/ w:861
AS8940G_N10PGS1 GBTCFPbkQ_V3	Foxconn	BT 2.1	Foxconn Bluetooth BRM 2046 BT2.1 (T60H928.33) f/ w:861
AS8940G_N10PGS1 GBTCFbkQ_V3	Foxconn	BT 2.1	Foxconn Bluetooth BRM 2046 BT2.1 (T60H928.33) f/ w:861
Camera			
AS8940G_N10EGE1 GBCFPbkQ_V3	Suyin	1.0M DV	Suyin 1.0M DV Tulip_G
AS8940G_N10EGE1 GBCFPbkQ_V3	Chicony	1.0M DV	Chicony 1.0M DV Daisy_G
AS8940G_N10EGE1 GBTCFPbkQ_V3	Suyin	1.0M DV	Suyin 1.0M DV Tulip_G
AS8940G_N10EGE1 GBTCFPbkQ_V3	Chicony	1.0M DV	Chicony 1.0M DV Daisy_G
AS8940G_N10PGS1 GBCFPbkQ_V3	Suyin	1.0M DV	Suyin 1.0M DV Tulip_G
AS8940G_N10PGS1 GBCFPbkQ_V3	Chicony	1.0M DV	Chicony 1.0M DV Daisy_G
AS8940G_N10PGS1 GBCFbkQ_V3	Suyin	1.0M DV	Suyin 1.0M DV Tulip_G
AS8940G_N10PGS1 GBCFbkQ_V3	Chicony	1.0M DV	Chicony 1.0M DV Daisy_G

BOM_Name	BRAND	Type	Description
AS8940G_N10PGS1 GBTCFbkQ_V3	SEAGATE	N500GB5.4K S	"HDD SEAGATE 2.5"" 5400rpm 500GB ST9500325AS Wyatt SATA LF F/W:0001SDM1"
AS8940G_N10PGS1 GBTCFbkQ_V3	TOSHIBA	N500GB5.4K S	"HDD TOSHIBA 2.5"" 5400rpm 500GB MK5055GSX Libra SATA LF F/W:FG001J"
AS8940G_N10PGS1 GBTCFbkQ_V3	HGST	N500GB5.4K S	"HDD HGST 2.5"" 5400rpm 500GB HTS545050B9A300 Panther B SATA LF F/W:C60F"
AS8940G_N10PGS1 GBTCFbkQ_V3	WD	N500GB5.4K S	"HDD WD 2.5"" 5400rpm 500GB WD5000BEVT-22ZAT0 ML250 SATA LF F/W:01.01A01"
LAN			
AS8940G_N10EGE1 GBCFPbkQ_V3	Broadcom	BCM5784	Broadcom BCM5784
AS8940G_N10EGE1 GBCFPbkQ_V3	Broadcom	BCM5784	Broadcom BCM5784
AS8940G_N10PGS1 GBCFPbkQ_V3	Broadcom	BCM5784	Broadcom BCM5784
AS8940G_N10PGS1 GBCFbkQ_V3	Broadcom	BCM5784	Broadcom BCM5784
AS8940G_N10PGS1 GBTCFPbkQ_V3	Broadcom	BCM5784	Broadcom BCM5784
AS8940G_N10PGS1 GBTCFbkQ_V3	Broadcom	BCM5784	Broadcom BCM5784
LCD			
AS8940G_N10EGE1 GBCFPbkQ_V3	CMO	NLED18.4W UXGAGL	"LED LCD CMO 18.4"" WUXGA Glare N184H6-L02 LF 220nit 8ms 500:1"
AS8940G_N10EGE1 GBTCFPbkQ_V3	CMO	NLED18.4W UXGAGL	"LED LCD CMO 18.4"" WUXGA Glare N184H6-L02 LF 220nit 8ms 500:1"
AS8940G_N10PGS1 GBCFPbkQ_V3	CMO	NLED18.4W UXGAGL	"LED LCD CMO 18.4"" WUXGA Glare N184H6-L02 LF 220nit 8ms 500:1"
AS8940G_N10PGS1 GBCFbkQ_V3	CMO	NLED18.4W UXGAGL	"LED LCD CMO 18.4"" WUXGA Glare N184H6-L02 LF 220nit 8ms 500:1"
AS8940G_N10PGS1 GBTCFPbkQ_V3	CMO	NLED18.4W UXGAGL	"LED LCD CMO 18.4"" WUXGA Glare N184H6-L02 LF 220nit 8ms 500:1"
AS8940G_N10PGS1 GBTCFbkQ_V3	CMO	NLED18.4W UXGAGL	"LED LCD CMO 18.4"" WUXGA Glare N184H6-L02 LF 220nit 8ms 500:1"
Memory			
AS8940G_N10EGE1 GBCFPbkQ_V3	NANYA	SO1GBIII10	Memory NANYA SO-DIMM DDRIII 1066 1GB NT1GC64BH8A1PS-BE LF 64*16 0.07um
AS8940G_N10EGE1 GBCFPbkQ_V3	MICRON	SO1GBIII10	Memory MICRON SO-DIMM DDRIII 1066 1GB MT8JSF12864HY-1G1D1 LF 64*16 0.07um
AS8940G_N10EGE1 GBCFPbkQ_V3	ELPIDA	SO1GBIII10	Memory ELPIDA SO-DIMM DDRIII 1066 1GB EBJ11UE6BBS0-AE-F LF 64*16 0.065um
AS8940G_N10EGE1 GBCFPbkQ_V3	ELPIDA	SO1GBIII10	Memory ELPIDA SO-DIMM DDRIII 1066 1GB EBJ10UE8BDS0-AE-F LF 128*8 0.065um
AS8940G_N10EGE1 GBCFPbkQ_V3	SAMSUNG	SO1GBIII10	Memory SAMSUNG SO-DIMM DDRIII 1066 1GB M471B2873EH1-CF8 LF 64*16 0.055um
AS8940G_N10EGE1 GBCFPbkQ_V3	HYNIX	SO1GBIII10	Memory HYNIX SO-DIMM DDRIII 1066 1GB HMT112S6AFP6C-G7N0 LF 64*16 0.065um
AS8940G_N10EGE1 GBCFPbkQ_V3	HYNIX	SO1GBIII10	Memory HYNIX SO-DIMM DDRIII 1066 1GB HMT112S6BFR6C-G7 N0 LF 64*16 0.055um
AS8940G_N10EGE1 GBCFPbkQ_V3	NANYA	SO2GBIII10	Memory NANYA SO-DIMM DDRIII 1066 2GB NT2GC64B8HA1NS-BE LF 128*8 0.07um
AS8940G_N10EGE1 GBCFPbkQ_V3	MICRON	SO2GBIII10	Memory MICRON SO-DIMM DDRIII 1066 2GB MT16JSF25664HY-1G1D1 LF 128*8 0.07um

BOM_Name	BRAND	Type	Description
AS8940G_N10PGS1 GBCFbkQ_V3	None	N	N
AS8940G_N10PGS1 GBTCTPbkQ_V3	None	N	N
AS8940G_N10PGS1 GBTCTPbkQ_V3	None	N	N
Software			
AS8940G_N10EGE1 GBCFPbkQ_V3		McAfee	Antivirus application McAfee
AS8940G_N10EGE1 GBTCTPbkQ_V3		McAfee	Antivirus application McAfee
AS8940G_N10PGS1 GBCFPbkQ_V3		McAfee	Antivirus application McAfee
AS8940G_N10PGS1 GBCFbkQ_V3		McAfee	Antivirus application McAfee
AS8940G_N10PGS1 GBTCTPbkQ_V3		McAfee	Antivirus application McAfee
TV Antenna			
AS8940G_N10EGE1 GBTCTPbkQ_V3		Passive Antenna	Avermedia Di-Pole passive TV Antenna
AS8940G_N10PGS1 GBTCTPbkQ_V3		Passive Antenna	Avermedia Di-Pole passive TV Antenna
AS8940G_N10PGS1 GBTCTPbkQ_V3		Passive Antenna	Avermedia Di-Pole passive TV Antenna
TV Tuner			
AS8940G_N10EGE1 GBTCTPbkQ_V3		DVB-T Mini-card	DVB-T Mini-card TT-1260DA w/DiBCOM DIB7070P+DiB0700C rev.D
AS8940G_N10EGE1 GBTCTPbkQ_V3		DVB-T Mini-card	DVB-T Mini-card TT-1281DA w/DiBCOM DIB7770
AS8940G_N10PGS1 GBTCTPbkQ_V3		DVB-T Mini-card	DVB-T Mini-card TT-1260DA w/DiBCOM DIB7070P+DiB0700C rev.D
AS8940G_N10PGS1 GBTCTPbkQ_V3		DVB-T Mini-card	DVB-T Mini-card TT-1281DA w/DiBCOM DIB7770
AS8940G_N10PGS1 GBCFbkQ_V3		DVB-T Mini-card	DVB-T Mini-card TT-1260DA w/DiBCOM DIB7070P+DiB0700C rev.D
AS8940G_N10PGS1 GBCFbkQ_V3		DVB-T Mini-card	DVB-T Mini-card TT-1281DA w/DiBCOM DIB7770
VGA Chip			
AS8940G_N10EGE1 GBCFPbkQ_V3	NVIDIA	N10EGE	NVIDIA N10EGE 40nm 29mm*29mm GB1-128 package
AS8940G_N10EGE1 GBTCTPbkQ_V3	NVIDIA	N10EGE	NVIDIA N10EGE 40nm 29mm*29mm GB1-128 package
AS8940G_N10PGS1 GBCFPbkQ_V3	NVIDIA	N10PGS	NVIDIA N10PGS 40nm 29mm*29mm GB1-128 package
AS8940G_N10PGS1 GBCFbkQ_V3	NVIDIA	N10PGS	NVIDIA N10PGS 40nm 29mm*29mm GB1-128 package
AS8940G_N10PGS1 GBTCTPbkQ_V3	NVIDIA	N10PGS	NVIDIA N10PGS 40nm 29mm*29mm GB1-128 package
AS8940G_N10PGS1 GBCFbkQ_V3	NVIDIA	N10PGS	NVIDIA N10PGS 40nm 29mm*29mm GB1-128 package
VRAM			
AS8940G_N10EGE1 GBCFPbkQ_V3		1G-DDR3 (64*16*8)	1G-DDR3 64*16*8

CLICK HERE TO **DOWNLOAD** THE COMPLETE MANUAL

- Thank you very much for reading the preview of the manual.
- You can download the complete manual from: www.heydownloads.com by clicking the link below



- Please note: If there is no response to CLICKING the link, please download this PDF first and then click on it.

CLICK HERE TO **DOWNLOAD** THE COMPLETE MANUAL