

# Aspire 7715Z/7315 Series Service Guide

Service guide files and updates are available on the ACER/CSD web; for more information, please refer to <http://csd.acer.com.tw>

PRINTED IN TAIWAN

CLICK HERE TO **DOWNLOAD** THE COMPLETE MANUAL

- Thank you very much for reading the preview of the manual.
- You can download the complete manual from: [www.heydownloads.com](http://www.heydownloads.com) by clicking the link below



- Please note: If there is no response to CLICKING the link, please download this PDF first and then click on it.

CLICK HERE TO **DOWNLOAD** THE COMPLETE MANUAL

# System Specifications

---

## Features

Below is a brief summary of the computer's many features:

**NOTE:** Items denoted with an (\*) are only available for selected models.

## Operating System

- Genuine Windows® 7™

## Platform

- Intel® Pentium® mobile processor\*
- Intel® Celeron® mobile processor\*
- Mobile Intel® GL40 Express Chipset

## System Memory

- Dual-channel support
- Up to 2 GB of DDR2 667 MHz memory, upgradeable to 4 GB using two soDIMM modules\*
- Up to 2 GB of DDR3 1066 MHz memory, upgradeable to 4 GB using two soDIMM modules\*

## Display

- 17" HD+ 1600 x 900
- 16:9 aspect ratio

## Graphics

- Mobile Intel® GL40 Express Chipset

## Storage subsystem

- 2.5" hard disk drive
- DVD-Super Multi double-layer drive
- Multi-in-1 card reader

## Audio

















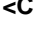
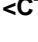

- Two built-in stereo speakers
- High-definition audio support
- MS-Sound compatible

## Dimensions and Weight

- 410.5 (W) x 268 (D) x 26.8/39.6 (H) mm (16 x 10.45 x 1.04/1.54 inches)

# Windows Keys

The keyboard has two keys that perform Windows-specific functions.

Key	Description
 Windows key	<p>Pressed alone, this key has the same effect as clicking on the Windows Start button; it launches the Start menu. It can also be used with other keys to provide a variety of functions:</p> <ul style="list-style-type: none"> <li>&lt;  &gt;: Open or close the Start menu</li> <li>&lt;  &gt; + &lt;D&gt;: Display the desktop</li> <li>&lt;  &gt; + &lt;E&gt;: Open Windows Explore</li> <li>&lt;  &gt; + &lt;F&gt;: Search for a file or folder</li> <li>&lt;  &gt; + &lt;G&gt;: Cycle through Sidebar gadgets</li> <li>&lt;  &gt; + &lt;L&gt;: Lock your computer (if you are connected to a network domain), or switch users (if you're not connected to a network domain)</li> <li>&lt;  &gt; + &lt;M&gt;: Minimizes all windows</li> <li>&lt;  &gt; + &lt;R&gt;: Open the Run dialog box</li> <li>&lt;  &gt; + &lt;T&gt;: Cycle through programs on the taskbar</li> <li>&lt;  &gt; + &lt;U&gt;: Open Ease of Access Center</li> <li>&lt;  &gt; + &lt;X&gt;: Open Windows Mobility Center</li> <li>&lt;  &gt; + &lt;BREAK&gt;: Display the System Properties dialog box</li> <li>&lt;  &gt; + &lt;SHIFT+M&gt;: Restore minimized windows to the desktop</li> <li>&lt;  &gt; + &lt;TAB&gt;: Cycle through programs on the taskbar by using Windows Flip 3-D</li> <li>&lt;  &gt; + &lt;SPACEBAR&gt;: Bring all gadgets to the front and select Windows Sidebar</li> <li>&lt;CTRL&gt; + &lt;  &gt; + &lt;F&gt;: Search for computers (if you are on a network)</li> <li>&lt;CTRL&gt; + &lt;  &gt; + &lt;TAB&gt;: Use the arrow keys to cycle through programs on the taskbar by using Windows Flip 3-D</li> </ul> <p><b>Note:</b> Depending on your edition of Windows 7, some shortcuts may not function as described.</p>
 Application key	<p>This key has the same effect as clicking the right mouse button; it opens the application's context menu.</p>

# System Utilities

---

## BIOS Setup Utility

The BIOS Setup Utility is a hardware configuration program built into your computer's BIOS (Basic Input/Output System).

Your computer is already properly configured and optimized, and you do not need to run this utility. However, if you encounter configuration problems, you may need to run Setup. Please also refer to Chapter 4 Troubleshooting when problem arises.

To activate the BIOS Utility, press **F2** during POST (when "Press <F2> to enter Setup" message is prompted on the bottom of screen).

Press **F2** to enter setup. The default parameter of F12 Boot Menu is set to "disabled". If you want to change boot device without entering BIOS Setup Utility, please set the parameter to "enabled".

Press <F12> during POST to enter multi-boot menu. In this menu, user can change boot device without entering BIOS SETUP Utility.

## Navigating the BIOS Utility

There are six menu options: Information, Main, Advanced, Security, Boot, and Exit.

Follow these instructions:

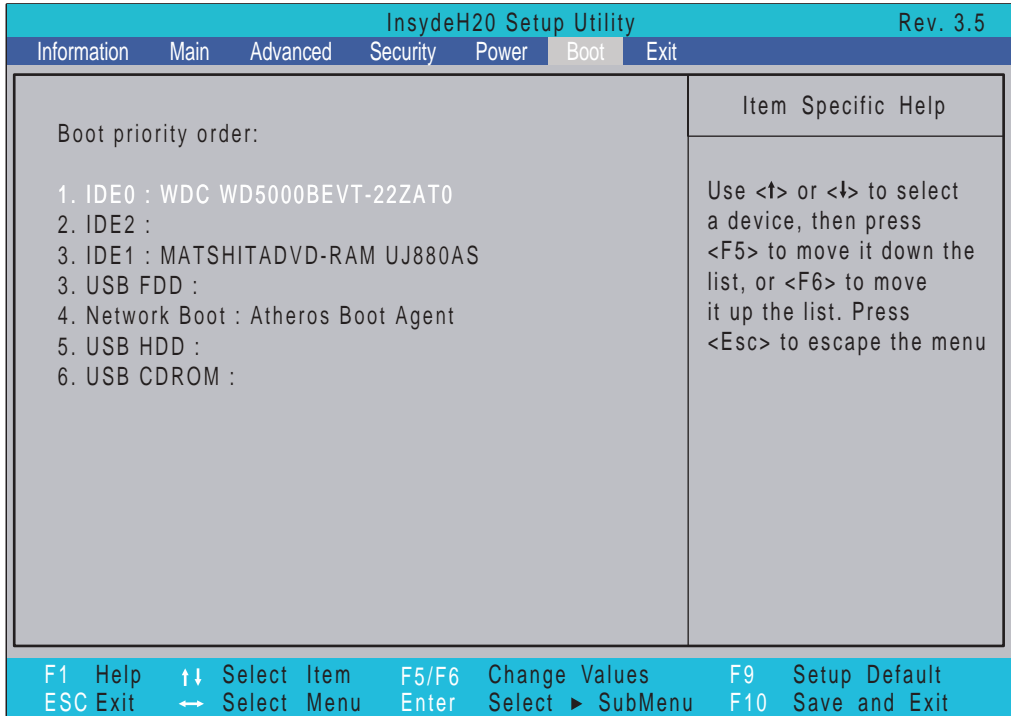
- To choose a menu, use the left and right arrow keys.
- To choose an item, use the up and down arrow keys.
- To change the value of a parameter, press **F5** or **F6**.
- A plus sign (+) indicates the item has sub-items. Press **Enter** to expand this item.
- Press **Esc** while you are in any of the menu options to go to the Exit menu.
- In any menu, you can load default settings by pressing **F9**. You can also press **F10** to save any changes made and exit the BIOS Setup Utility.

**NOTE:** You can change the value of a parameter if it is enclosed in square brackets. Navigation keys for a particular menu are shown on the bottom of the screen. Help for parameters are found in the Item Specific Help part of the screen. Read this carefully when making changes to parameter values. **Please note that system information is subject to different models.**

# Boot

This menu allows the user to decide the order of boot devices to load the operating system. Bootable devices includes the USB diskette drives, the onboard hard disk drive and the DVD drive in the module bay.

Select Boot Devices to select specific devices to support boot.



---

## Using the LAN MAC EEPROM Utility

You can use the MAC.BAT utility to write the MAC.CFG file to the EEPROM under DOS mode.

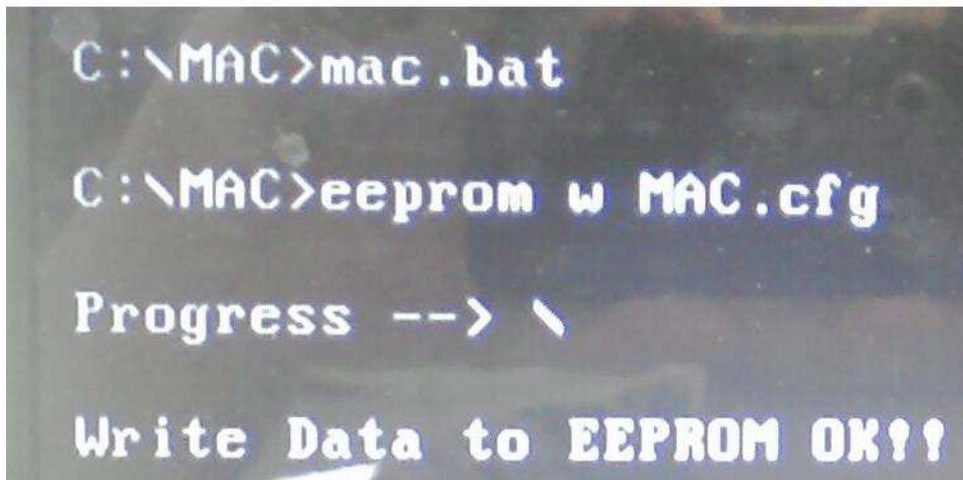
1. Use a text editor (for example: Notepad) to open the MAC.CFG file. You can see the MAC.CFG contents as below:



```
MAC.CFG - 記事本
檔案(F) 編輯(E) 格式(O) 檢視(V) 說明(H)
Title= MAC Address byte
WriteData='001122334455'
StartAddr=7A
WriteLeng=6
KeepByte=0
```

WriteData = '001122334455'	MAC value
StartAddr=7A	MAC address
WriteLeng=6	MAC value length
KeepByte=0	don't care

2. In DOS mode, run the **MAC.BAT** file to write MAC values to eeprom.

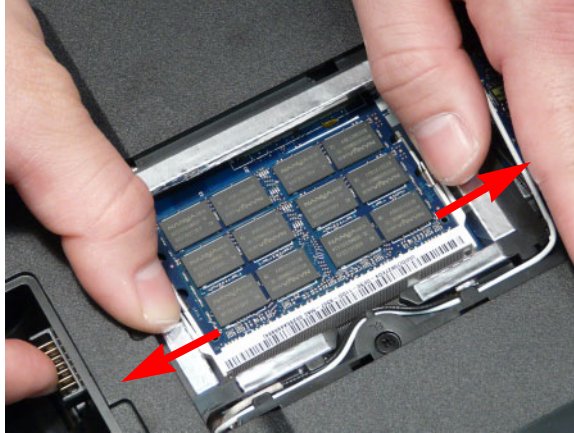


```
C:\MAC>mac.bat
C:\MAC>eeprom w MAC.cfg
Progress --> \
Write Data to EEPROM OK!!
```

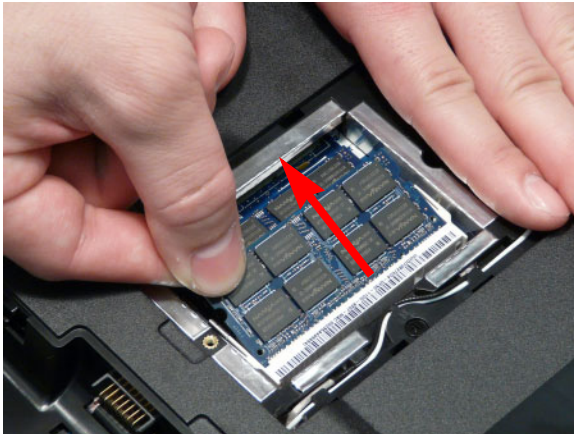
---

## Removing the DIMM Modules

1. See “Removing the Lower Covers” on page 48.
2. Push out the release latches on both sides of the DIMM socket to release the DIMM module.

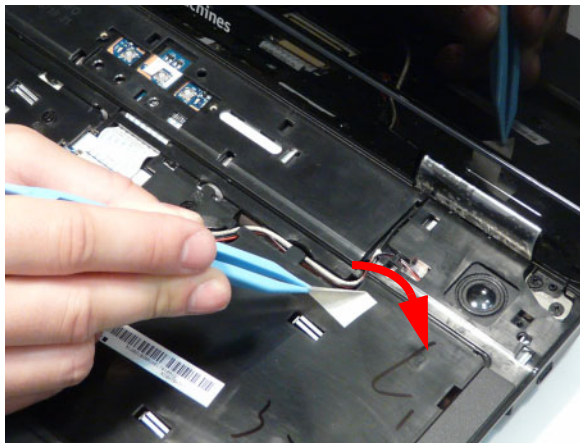


3. Remove the DIMM module.

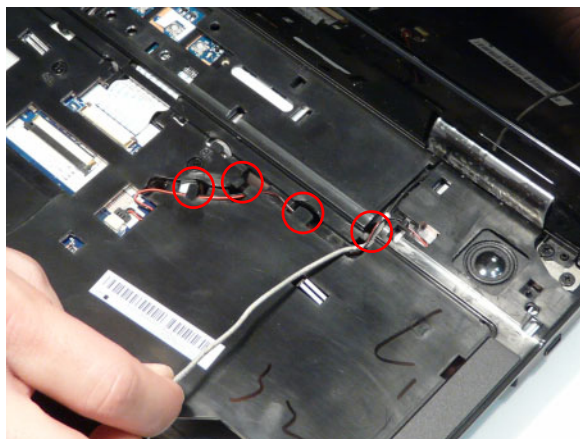


4. Repeat steps for the second DIMM module if present.

7. Remove the adhesive tape securing the Antenna cable to the Upper Cover.



8. Remove the black Antenna cable from the cable channel as shown. Ensure that the cable is completely free of the retaining clips all the way to the hinge well.



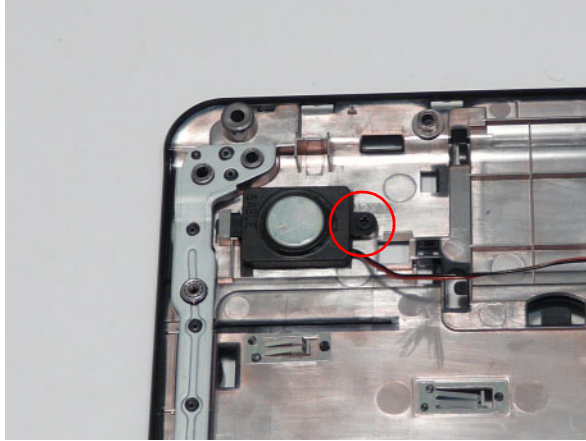
9. Open the LCD Panel to the full extent to expose the Hinge Covers.


10. Press the left side Hinge Cover inward, as shown, and lift to remove the cover from the chassis.



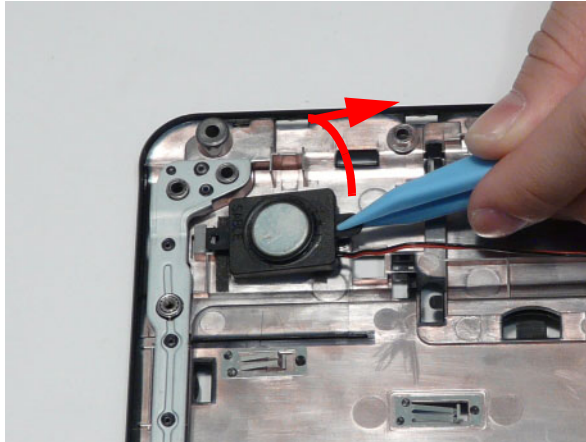
11. Repeat the process for the right side Hinge Cover.

5. Remove the single securing screw from the Right Speaker Module.



Step	Size	Quantity	Screw Type
Right Speaker Module	M2*3	1	

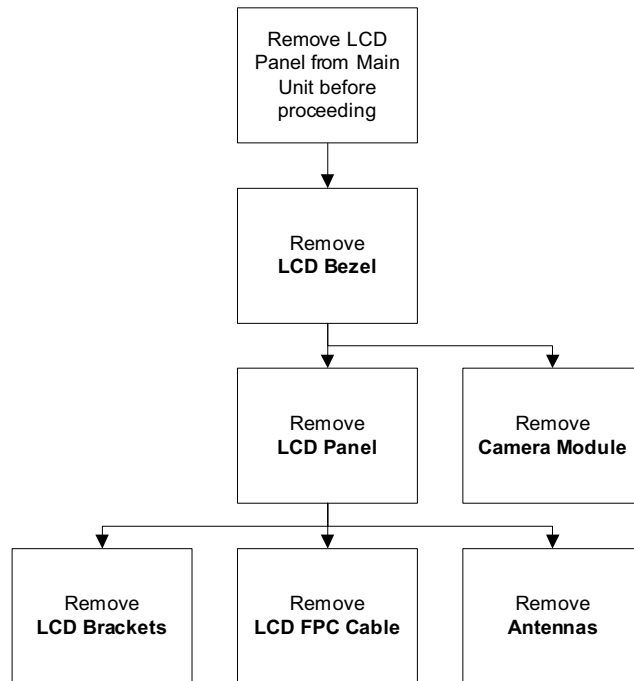
6. Lift the Speaker clear of the Upper Cover, right side first as shown.



---

# LCD Module Disassembly Process

## LCD Module Disassembly Flowchart



### Screw List

Step	Screw	Quantity	Part No.
LCD Bezel	M2.5*6	4	86.N2802.002
LCD Panel	M2.5*6	2	86.N2802.002
LCD Brackets	M2*3	6	86.N2802.006

CLICK HERE TO **DOWNLOAD** THE COMPLETE MANUAL

- Thank you very much for reading the preview of the manual.
- You can download the complete manual from: [www.heydownloads.com](http://www.heydownloads.com) by clicking the link below



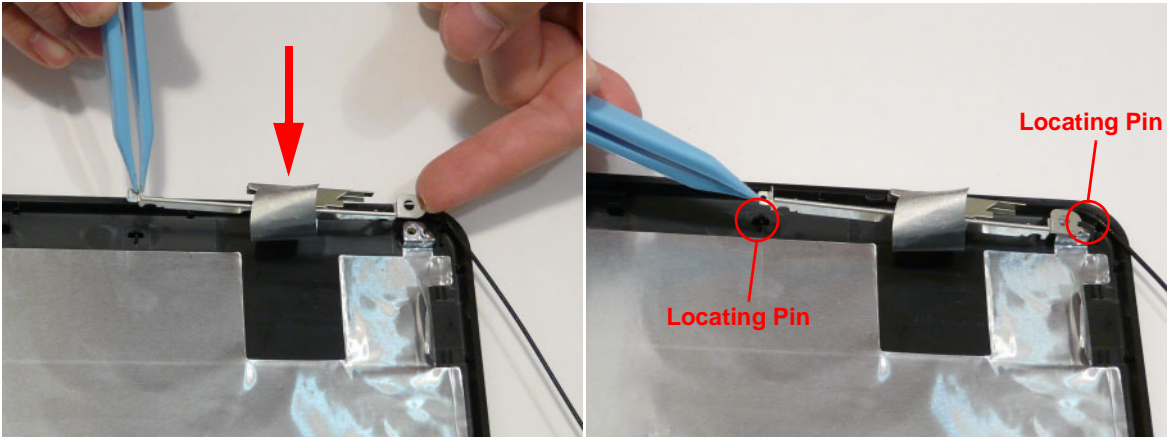
- Please note: If there is no response to CLICKING the link, please download this PDF first and then click on it.

CLICK HERE TO **DOWNLOAD** THE COMPLETE MANUAL

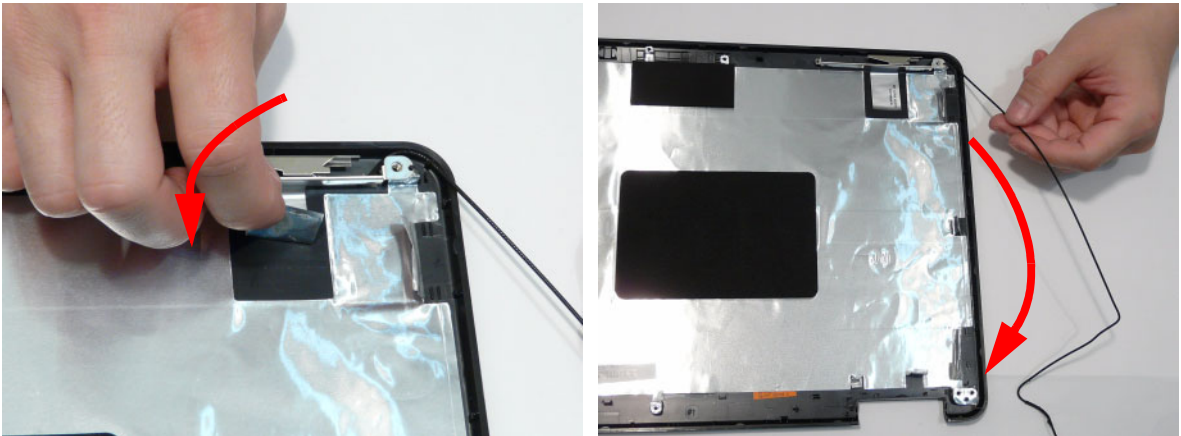
# LCD Module Reassembly Procedure

## Replacing the Antennas

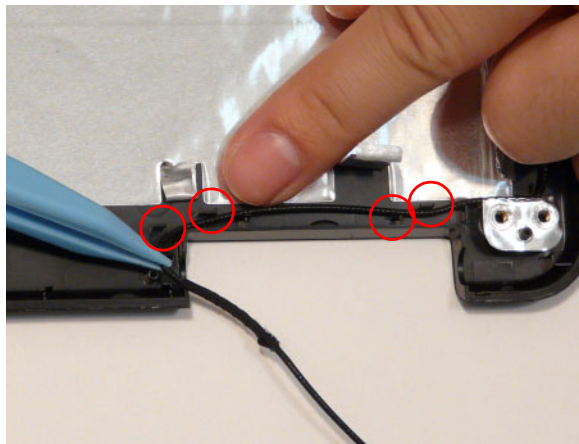
1. Replace the right Antenna as shown. Ensure that the locating pins on the Antenna are correctly seated.



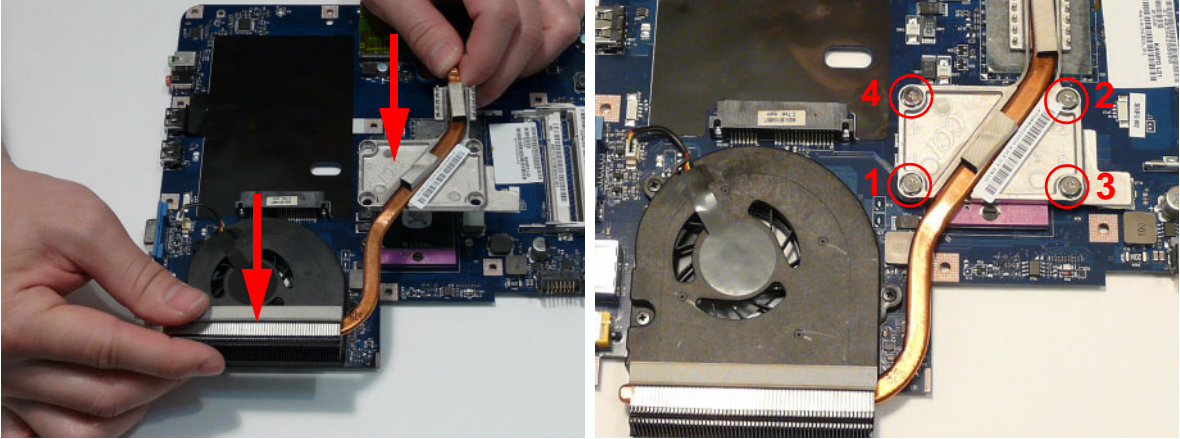
2. Replace the adhesive strip to secure the Antenna in place.
3. Run the cable down the side of the LCD Module using all available clips and adhesive.



4. Run the cable along the cable channel as shown, using all available cable clips.

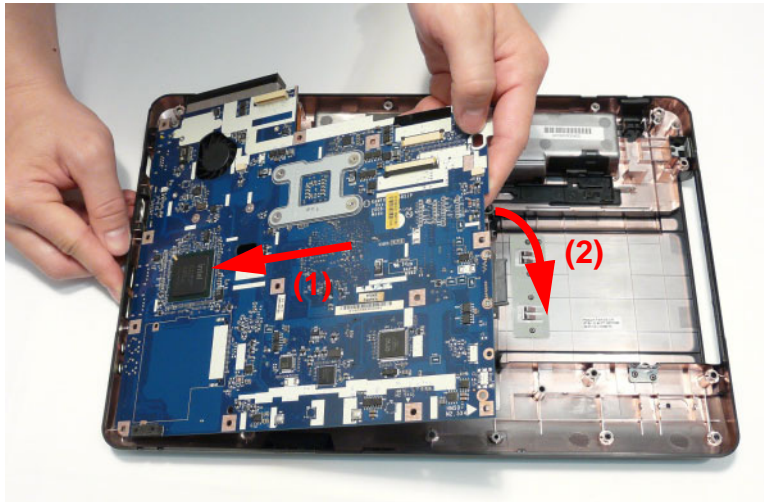


- Align the screw holes on the Thermal Module and Mainboard then replace the module. Keep the module as level as possible to spread the thermal grease evenly.
- Replace the four securing screws (in numerical order from screw 1 to screw 4) to secure the Thermal Module in place.



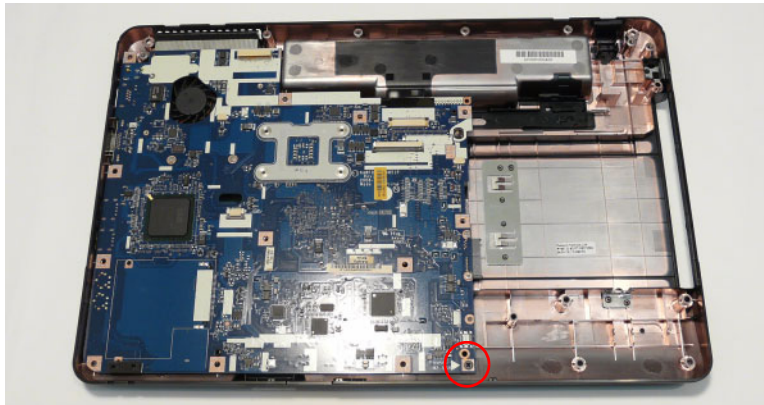
## Replacing the Mainboard

- Ensure that the Mainboard is face up (the CPU is not visible). Place the Mainboard in the chassis, left edge first (1), then rotate it downward into position (2).

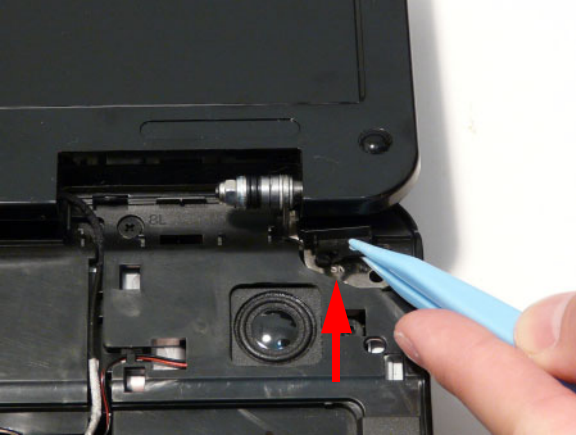


**NOTE:** Ensure the I/O ports are positioned correctly through the casing.

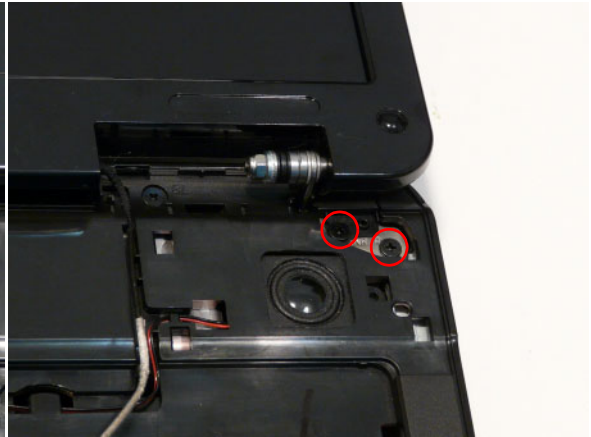
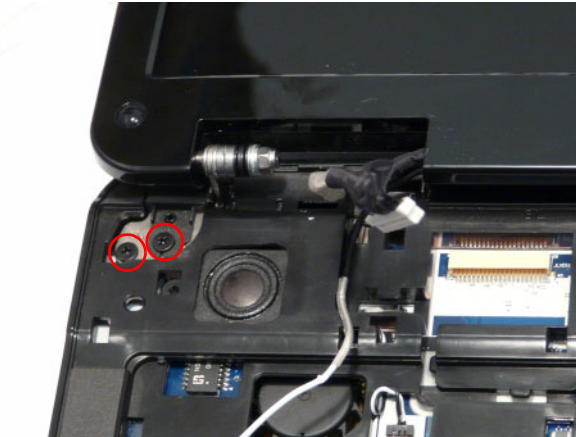
- Replace the single securing screw in the mainboard.



4. Replace the right screw cover as shown. Ensure that the securing tab on the rear of the cover is seated correctly in the Upper Cover.

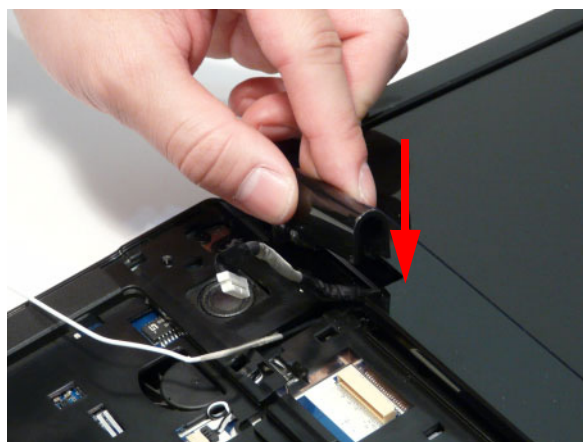
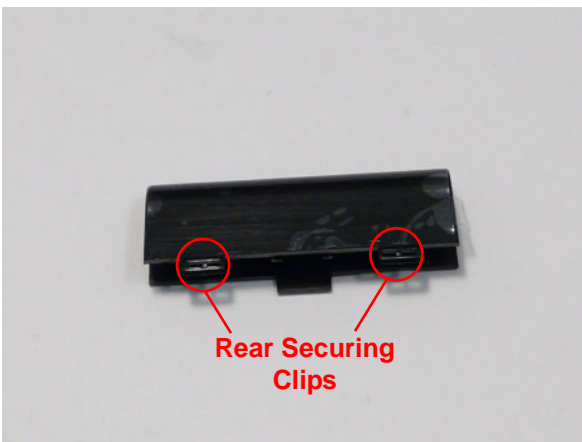


5. Replace the four screws securing the LCD Module to the Upper Cover.



6. Ensure that the Hinge Covers are replaced correctly. Identify the rear edge of the covers by the two securing clips.

7. Align the left Hinge Cover as shown and press down to replace the cover.

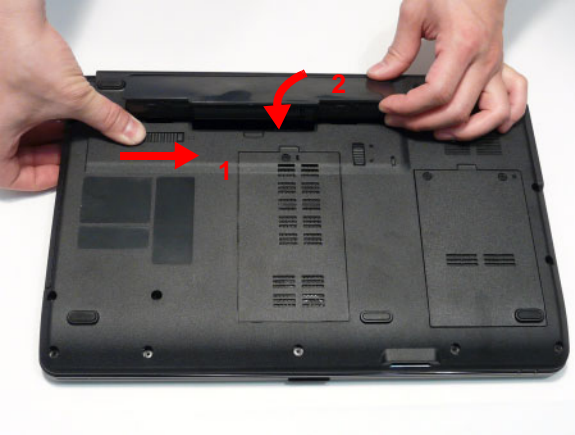


8. Repeat the process for the right side Hinge Cover.

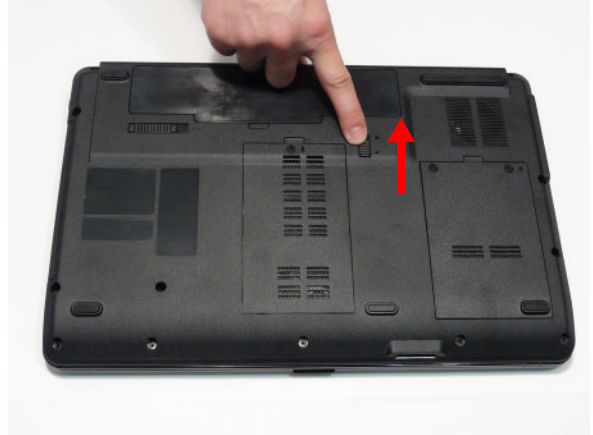
---

## Replacing the Battery

1. Slide and hold the battery release latch to the release position (1), insert the battery pack and press down (2).



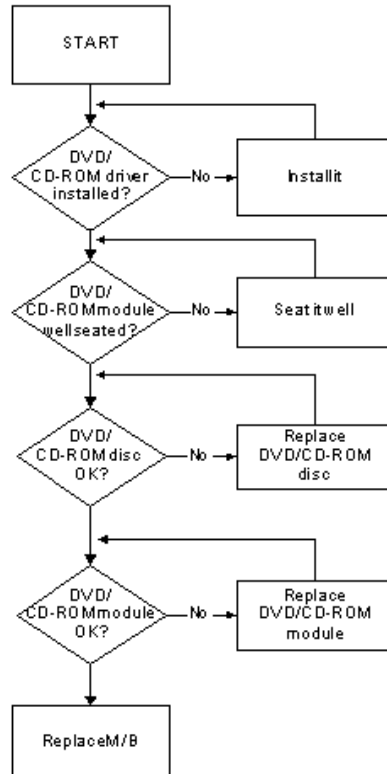
2. Slide the battery lock in the direction shown to secure the battery in place.



---

## ODD Failure

If the **ODD** fails, perform the following actions one at a time to correct the problem. Do not replace a non-defective FRUs:



## ODD Not Operating Correctly

If the **ODD** exhibits any of the following symptoms it may be faulty:

- Audio CDs do not play when loaded
- DVDs do not play when loaded
- Blank discs do not burn correctly
- DVD or CD play breaks up or jumps
- Optical drive not found or not active:
  - Not shown in My Computer or the BIOS setup
  - LED does not flash when the computer starts up
  - The tray does not eject
- Access failure screen displays
- The ODD is noisy

Perform the following general solutions one at a time to correct the problem.

1. Reboot the computer and retry the operation.
2. Try an alternate disc.
3. Navigate to **Start** → **Computer**. Check that the ODD device is displayed in the **Devices with Removable Storage** panel.
4. Navigate to **Start** → **Control Panel** → **System and Maintenance** → **System** → **Device Manager**.

Code	Description
0x3B	MONOTONIC_COUNTER
0x3C	WATCH_DOG_TIMER
0x3D	SECURITY_STUB
0x3E	DXE_CPU_IO
0x3F	CF9_RESET
0x40	PC_RTC
0x41	STATUS_CODE
0x42	VARIABLE
0x43	EMU_VARIABLE
0x44	DXE_CHIPSET_INIT
0x45	DXE_ALERT_FORMAT
0x46	PCI_HOST_BRIDGE
0x47	PCI_EXPRESS
0x48	DXE_SB_INIT
0x49	IDE_CONTROLLER
0x4A	SATA_CONTROLLER
0x4B	SB_SM_BUS
0x4C	ISA_ACPI_DRIVER
0x4D	ISA_BUS
0x4E	ISA_SERIAL
0x4F	IDE_BUS
0x50	PCI_BUS
0x51	BOOT_PRIORITY
0x52	FVB_SERVICE
0x53	ACPI_PLATFORM
0x54	PCI_HOT_PLUG
0x55	DXE_PLATFORM
0x56	PLATFORM_IDE
0x57	SMBIOS
0x58	MEMORY_SUB_CLASS
0x59	MISC_SUB_CLASS
0x5A	CON_PLATFORM
0x5B	SAVE_MEMORY_CONFIG
0x5C	ACPI_SUPPORT
0x5D	CON_SPLITTER_UGA_VGA / CON_SPLITTER
0x5E	VGA_CLASS
0x5F	DATA_HUB
0x60	DISK_IO
0x61	MEMORY_TEST
0x62	CRISIS_RECOVERY
0x63	LEGACY_8259
0x64	LEGACY_REGION
0x65	LEGACY_INTERRUPT

## FRU (Field Replaceable Unit) List

---

This chapter gives you the FRU (Field Replaceable Unit) listing in global configurations of Aspire 7715Z/7315. Refer to this chapter whenever ordering for parts to repair or for RMA (Return Merchandise Authorization).

Please note that WHEN ORDERING FRU PARTS, you should check the most up-to-date information available on your regional web or channel. For whatever reasons a part number change is made, it will not be noted on the printed Service Guide. For ACER AUTHORIZED SERVICE PROVIDERS, your Acer office may have a DIFFERENT part number code from those given in the FRU list of this printed Service Guide. You MUST use the local FRU list provided by your regional Acer office to order FRU parts for repair and service of customer machines.

NOTE: To scrap or to return the defective parts, you should follow the local government ordinance or regulations on how to dispose it properly, or follow the rules set by your regional Acer office on how to return it.

CATEGORY	DESCRIPTION	AcerPN
	ANTENNA AUX	50.N3702.004
	LCD BEZEL FOR W/CCD FUNCTION - ASPIRE	60.PL602.004
	LCD BEZEL FOR W/O CCD FUNCTION - ASPIRE	60.PL502.001
	LED CABLE FOR W/CCD F	60.N3702.006
	LCD BRACKET R&L FOR LED F	33.N3702.004
	CAMERA 0.3	57.N2802.001
<b>MAINBOARD</b>		
	MB ASSY-GM45(B3)-INTEL	MB.N5302.001
	MB ASSY-GM45(A1)-INTEL	TBD
	MB ASSY-GL40-(B3)-INTEL	TBD
	Mainboard AS7715Z Intel GL40 ICH9M V1.0 LF	MB.PL402.001
	Mainboard G525 Intel GL40 ICH9M V1.0 LF DDR3	MB.N8302.001
<b>MEMORY</b>		
	Memory NANYA SO-DIMM DDRII 667 1GB NT1GT64UH8D0FN-3C LF 64*16 0.07um	KN.1GB03.026
	Memory MICRON SO-DIMM DDRII 667 1GB MT8HTF12864HDY-667G1 LF 64*16 0.065um	KN.1GB04.010
	Memory ELPIDA SO-DIMM DDRII 667 1GB EBE11UE6ACUA-6E-E LF 64*16 0.065um	KN.1GB09.008
	Memory SAMSUNG SO-DIMM DDRII 667 1GB M470T2864EH3-CE6 LF 64*16 0.055um	KN.1GB0B.027
	Memory HYNIX SO-DIMM DDRII 667 1GB HYMP112S64CP6-Y5 LF	KN.1GB0G.012
	Memory HYNIX SO-DIMM DDRII 667 1GB HMP112S6EFR6C-Y5 LF 64*16 0.055um	KN.1GB0G.022
	Memory NANYA SO-DIMM DDRII 667 2GB NT2GT64U8HD0BN-3C LF 128*8 0.07um	KN.2GB03.011
	Memory MICRON SO-DIMM DDRII 667 2GB MT16HTF25664HY-667G1 LF 128*8 0.065um	KN.2GB04.010

Model	Acer Part No	RO	Country	Description
AS7715Z-443G25Mn	LX.PNJ02.005	EMEA	Serbia/ Macedonia	AS7715Z-443G25Mn W7HP64ATCS1 MC UMACks_3 2G+1G/250/6L2.2/5R/ CB_bgn_0.3D_HG_SL11
AS7715Z-443G25Mn	LX.PNJ02.004	EMEA	Greece	AS7715Z-443G25Mn W7HP64ATGR1 MC UMACks_3 2G+1G/250/6L2.2/5R/ CB_bgn_0.3D_HG_EL31
AS7715Z-443G25Mn	LX.PNJ02.003	EMEA	Austria	AS7715Z-443G25Mn W7HP64ATAT1 MC UMACks_3 2G+1G/250/6L2.2/5R/ CB_bgn_0.3D_HG_DE61
AS7715Z-443G25Mn	LX.PNJ02.002	EMEA	France	AS7715Z-443G25Mn W7HP64ATFR1 MC UMACks_3 2G+1G/250/6L2.2/5R/ CB_bgn_0.3D_HG_FR21
AS7715Z-443G25Mn	LX.PNJ02.001	EMEA	Eastern Europe	AS7715Z-443G25Mn W7HP64ATEU7 MC UMACks_3 2G+1G/250/6L2.2/5R/ CB_bgn_0.3D_HG_SL11
AS7715Z-434G32Mn	S2.PNJ02.001	WW	WW	AS7715Z-434G32Mn W7HP64AWW1 MC UMACks_3 2*2G/320/6L2.2/5R/ CB_bgn_0.3D_HG_ES62
AS7715Z-432G32Mi	S2.PL50C.001	WW	WW	AS7715Z-432G32Mi LINPUSAWW1 UMAKs 1*2G/320/6L2.2/5R/ CB_bg_HG_EN11
AS7715Z-432G16Mn	S2.PNK0C.001	WW	WW	AS7715Z-432G16Mn LINPUSAWW1 UMAKs_3 2*1G/160/6L2.2/5R/ CB_bgn_HG_EN11

Model	Acer Part No	CPU	LCD	VGA Chip	VRAM 1	Memory 1	Memory 2
AS7715Z-433G25Mi	S2.PL40C.001	PMDT4 300	NLED17.3 WXGA+G	UMA	N	SO2GBII6	SO1GBII6
AS7715Z-443G25Mn	LX.PNJ02.016	PMDT4 400	NLED17.3 WXGA+G	UMA	N	SO2GBIII10	SO1GBIII10
AS7715Z-444G32Mn	LX.PNJ02.045	PMDT4 400	NLED17.3 WXGA+G	UMA	N	SO2GBIII10	SO2GBIII10
AS7715Z-444G32Mn	LX.PNJ02.057	PMDT4 400	NLED17.3 WXGA+G	UMA	N	SO2GBIII10	SO2GBIII10
AS7715Z-443G32Mn	LX.PNJ02.061	PMDT4 400	NLED17.3 WXGA+G	UMA	N	SO2GBIII10	SO1GBIII10
AS7715Z-442G32Mn	LX.PNJ0C.007	PMDT4 400	NLED17.3 WXGA+G	UMA	N	SO2GBIII10	N
AS7715Z-444G50Mn	LX.PNJ02.070	PMDT4 400	NLED17.3 WXGA+G	UMA	N	SO2GBIII10	SO2GBIII10
AS7715Z-443G32Mn	LX.PNJ02.062	PMDT4 400	NLED17.3 WXGA+G	UMA	N	SO2GBIII10	SO1GBIII10
AS7715Z-444G64Mn	LX.PNJ02.065	PMDT4 400	NLED17.3 WXGA+G	UMA	N	SO2GBIII10	SO2GBIII10
AS7715Z-444G50Mn	LX.PNJ02.069	PMDT4 400	NLED17.3 WXGA+G	UMA	N	SO2GBIII10	SO2GBIII10
AS7715Z-444G50Mn	LX.PNJ02.068	PMDT4 400	NLED17.3 WXGA+G	UMA	N	SO2GBIII10	SO2GBIII10
AS7715Z-444G25Mn	LX.PNJ02.067	PMDT4 400	NLED17.3 WXGA+G	UMA	N	SO2GBIII10	SO2GBIII10

# Test Compatible Components

---

This computer's compatibility is tested and verified by Acer's internal testing department. All of its system functions are tested under Windows® 7 environment.

Refer to the following lists for components, adapter cards, and peripherals which have passed these tests. Regarding configuration, combination and test procedures, please refer to the Aspire 7715Z/7315 Compatibility Test Report released by the Acer Mobile System Testing Department.

CLICK HERE TO **DOWNLOAD** THE COMPLETE MANUAL

- Thank you very much for reading the preview of the manual.
- You can download the complete manual from: [www.heydownloads.com](http://www.heydownloads.com) by clicking the link below



- Please note: If there is no response to CLICKING the link, please download this PDF first and then click on it.

CLICK HERE TO **DOWNLOAD** THE COMPLETE MANUAL