

# Aspire 1500 Series

## Service Guide

Service guide files and updates are available on the ACER/CSD web; for more information, please refer to <http://csd.acer.com.tw>

SERVICE GUIDE PART NO.:

PRINTED IN TAIWAN

CLICK HERE TO **DOWNLOAD** THE COMPLETE MANUAL

- Thank you very much for reading the preview of the manual.
- You can download the complete manual from: [www.heydownloads.com](http://www.heydownloads.com) by clicking the link below



- Please note: If there is no response to CLICKING the link, please download this PDF first and then click on it.

CLICK HERE TO **DOWNLOAD** THE COMPLETE MANUAL

- 
- Comfortable palm rest area with well-positioned touchpad

### **Expansion**

- PC card slot enables a range of add-on options
- Upgradeable hard disk and memory modules

### **I/O Ports**


- Two Type II or one Type III PC CardBus (PCMCIA) slot
- One IEEE 1394 port
- One FIR port
- One RJ-11 modem jack (V.90/V.92, 56K)
- One RJ-45 network jack (Gigabit Ethernet)
- One DC-in port
- One parallel port (ECP/EPP)
- One S-video port
- One external monitor port
- One microphone-in jack (3.5mm mini jack)
- One headphone jack (3.5mm mini jack)
- Four USB 2.0 ports

---

## Understanding the icons

When the cover of your computer is closed, 2 easy-to-read icons are shown, indicating which state or feature is enabled or disabled.



#	Icon	Function	Description
1		Power	Lights up when the computer is on.
2	<b>Z<sup>Z</sup></b>	Sleep	Lights when the computer enters Standby mode and blinks when it enters into or resumes from hibernation mode.

## Video Resolutions Mode

Monitor Resolution	Hz
2D Display Mode	
640x480	120
800x600	120
1024x768	120
1152x864	120
1280x1024	120
1600x1200	85
1920x1080*16:9	75
1920x1200	75
1920x1440	75
2048x1536	60

Resolution, colors and maximum refresh rate (Hz) in 256, 65K or 16.7M colors.

**NOTE:** 16:9 aspect ratio monitors are supported on 1920x1080 and 848x480 on Windows(R)XP, Windows(R) 2000 and Windows(R)ME. The complete list of resolutions depends on the driver version and operating system. NOTE: resolutions are limited by the performance of the attached monitor.

## Parallel Port

Item	Specification
Parallel port controller	NS PC87392
Number of parallel port	1
Location	Rear side
Connector type	25-pin D-type
Parallel port function control	Enable/Disable by BIOS Setup
Supports ECP/EPP	Yes (set by BIOS setup)
Optional ECP DMA channel (in BIOS Setup)	DMA channel 1 and 3
Optional parallel port I/O address (in BIOS Setup)	378, 278, 3BC
Optional parallel port IRQ (in BIOS Setup)	IRQ7, IRQ5

## USB Port

Item	Specification
USB Compliancy Level	2.0
OHCI	USB 2.0
Number of USB port	4
Location	Rear side
Serial port function control	Enable/Disable by BIOS Setup

## PCMCIA Port

Item	Specification
PCMCIA controller	RICOH R5C554
Supports card type	Type II, Type III
Number of slots	Two type II, one type III
Access location	Left side
Supports ZV (Zoomed Video) port	Yes

The table below describes the parameters in this screen. Settings in **boldface** are the default and suggested parameter settings.

Parameter	Description	Format/Option
System Time	Sets the system time.	Format: HH:MM:SS (hour:minute:second) System Time
System Date	Sets the system date.	Format MM/DD/YYYY (month/day/year) System Date
System Memory	This field reports the memory size of the system. Memory size is fixed to 640MB	
Extended Memory	This field reports the memory size of the extended memory in the system. Extended Memory size=Total memory size-1MB	
Video Memory	Shows the VGA memory size. The default value is set to 32MB	Option: <b>32</b> /64MB
Quiet Boot	Determines if Customer Logo will be displayed or not; shows Summary Screen is disabled or enabled.  Enabled: Customer Logo is displayed, and Summary Screen is disabled. Disabled: Customer Logo is not displayed, and Summary Screen is enabled.	Option: <b>Enabled</b> or Disabled
Power on display	Auto: During power process, the system will detect if any display device is connected on external video port. If any external display device is connected, the power on display will be in CRT (or projector) only mode. Otherwise it will be in LCD only mode.  Both: Simultaneously enable both the integrated LCD screen and the system's external video port (for an external CRT or projector).	Option: <b>Auto</b> or Both
LCD Auto Dim	Determines if the system will automatically dim the LCD brightness in order to save power when AC is not present.	Option: <b>Enabled</b> or Disabled

**NOTE:** The sub-items under each device will not be shown if the device control is set to disable or auto. This is because the user is not allowed to control the settings in these cases.

# Machine Disassembly and Replacement

---

This chapter contains step-by-step procedures on how to disassemble the notebook computer for maintenance and troubleshooting.

To disassemble the computer, you need the following tools:

- Wrist grounding strap and conductive mat for preventing electrostatic discharge
- Flat-bladed screw driver
- Phillips screw driver
- Tweezers
- Plastic Flat-bladed screw driver
- Hexed Screw Driver

**NOTE:** The screws for the different components vary in size. During the disassembly process, group the screws with the corresponding components to avoid mismatch when putting back the components.

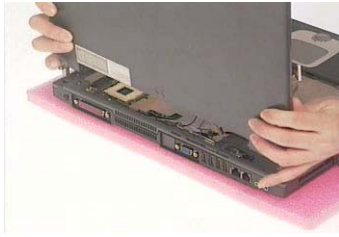
CLICK HERE TO **DOWNLOAD** THE COMPLETE MANUAL

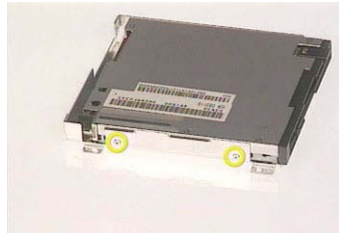
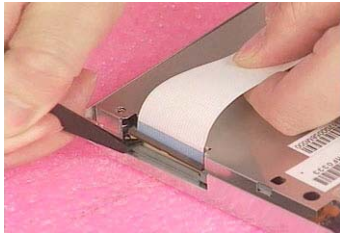
- Thank you very much for reading the preview of the manual.
- You can download the complete manual from: [www.heydownloads.com](http://www.heydownloads.com) by clicking the link below



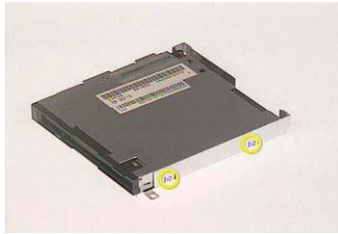
- Please note: If there is no response to CLICKING the link, please download this PDF first and then click on it.

CLICK HERE TO **DOWNLOAD** THE COMPLETE MANUAL



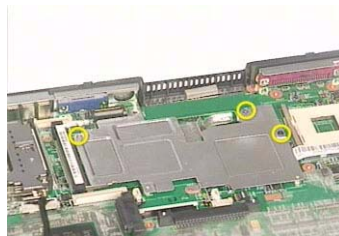


3. Remove another two screws holding the FDD bracket on the other side. Then take the FDD off the FDD bracket.



## Removing the VGA Heatsink Plate

1. See “Removing the Battery” on page 46..
2. See “Removing the Middle Cover” on page 50..
3. See “Removing the Keyboard” on page 57..
4. See “Removing the Floppy Disk Drive Module” on page 61..
5. Remove the three screws that secure the VGA heatsink plate then remove the plate.



## Removing the CPU Heatsink Plate

1. See “Removing the Battery” on page 46..
2. See “Removing the Middle Cover” on page 50..
3. See “Removing the Keyboard” on page 57..
4. See “Removing the Floppy Disk Drive Module” on page 61..
5. Remove the screw that fastens the CPU heatsink plate then remove it.



3. Connect the touch pad cable to the touchpad board with a plastic tweezers.



## Installing the Upper Case Assembly

1. See "Installing the Speaker Set" on page 68.
2. See "Installing the DC Board" on page 68.
3. See "Installing the PCMCIA Slot" on page 68.
4. See "Installing the Main Board" on page 68.
5. See "Installing the HDD Bracket" on page 69.
6. See "Installing the ODD Module" on page 69.
7. See "Installing the CPU Heatsink Plate" on page 70.
8. See "Installing the VGA Heatsink Plate" on page 70.
9. See "Installing the Floppy Disk Drive Module" on page 71.
10. See "Installing the Touchpad Cable" on page 71.
11. See "Installing the Touchpad Board" on page 71.
12. Attach the upper case assembly to the lower case assembly.

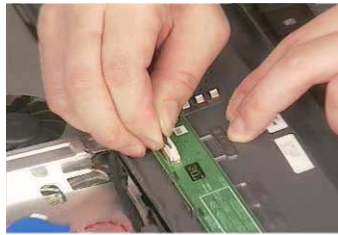


13. Fasten the 15 screws on the bottom. Then secure the 6 screws as the picture shows.



## Installing the Middle Cover

1. See “Installing the Launch Board” on page 81.
2. Connect the launch board cable to the launch board.



3. Attach the middle cover to the main unit carefully. Then close the LCD panel and fasten the middle cover with your fingers on its ridge.



4. Secure the middle cover with one screw as the picture shows.
5. Then attach the left hinge cap.



6. Secure the middle cover with one screw on another side as the picture shows.
7. Then attach the right hinge cap.

---

## Power-On Self-Test (POST) Error Message

The POST error message index lists the error message and their possible causes. The most likely cause is listed first.

**NOTE:** Perform the FRU replacement or actions in the sequence shown in FRU/Action column, if the FRU replacement does not solve the problem, put the original part back in the computer. Do not replace a non-defective FRU.

This index can also help you determine the next possible FRU to be replaced when servicing a computer.

If the symptom is not listed, see “Undetermined Problems” on page 104.

The following lists the error messages that the BIOS displays on the screen and the error symptoms classified by function.

**NOTE:** Most of the error messages occur during POST. Some of them display information about a hardware device, e.g., the amount of memory installed. Others may indicate a problem with a device, such as the way it has been configured.

**NOTE:** If the system fails after you make changes in the BIOS Setup Utility menus, reset the computer, enter Setup and install Setup defaults or correct the error.

---

### Modem/LAN-Related Symptoms

Symptom / Error	Action in Sequence
Internal modem does not work correctly.	Phone cable Driver Reconnect the Internal modem cable to the main board tightly. Main board
Internal LAN does not work correctly	Lan cable Driver Main board

**NOTE:** If you cannot find a symptom or an error in this list and the problem remains, see “Undetermined Problems” on page 104.

Picture	No.	Partname And Description	Part Number
	15	HDD BRACKET	33.T30V1.002
	16	HDD HOLDER	33.T30V1.003
	6	HINGE CAP RIGHT	42.T30V1.002
	8	HINGE CAP LEFT	42.T30V1.003
	NS	TOUCHPAD COVER	42.T30V1.006
	17	LOWER CASE W/DIMM COVER & FOOT & MODEM COVER & SPEAKER	60.A106V1.001
	NS	MODEM COVER W/SCREW	42.T30V1.004
	NS	DIMM COVER W/SCREW	42.A16V1.001

CLICK HERE TO **DOWNLOAD** THE COMPLETE MANUAL

- Thank you very much for reading the preview of the manual.
- You can download the complete manual from: [www.heydownloads.com](http://www.heydownloads.com) by clicking the link below



- Please note: If there is no response to CLICKING the link, please download this PDF first and then click on it.

CLICK HERE TO **DOWNLOAD** THE COMPLETE MANUAL