

**Acer**

**Aspire ASX1200/ ASX3200  
Service Guide**

Service guide files and updates are available on the ACER/CSD web; for more information, please refer to <http://csd.acer.com.tw>

PRINTED IN TAIWAN

CLICK HERE TO **DOWNLOAD** THE COMPLETE MANUAL

- Thank you very much for reading the preview of the manual.
- You can download the complete manual from: [www.heydownloads.com](http://www.heydownloads.com) by clicking the link below



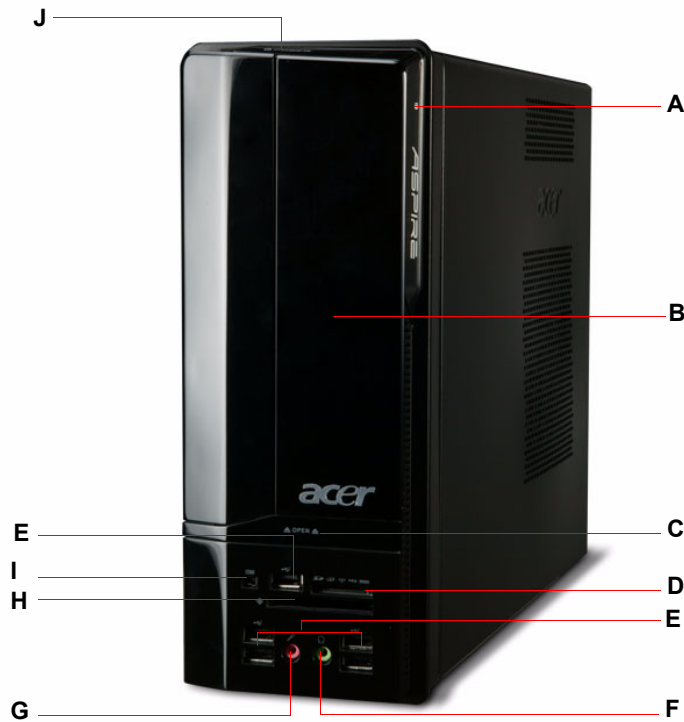
- Please note: If there is no response to CLICKING the link, please download this PDF first and then click on it.





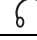


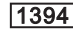

CLICK HERE TO **DOWNLOAD** THE COMPLETE MANUAL

# Aspire ASX1200/3200 Tour

This section is a virtual tour of the ASX1200/3200 system's interior and exterior components.

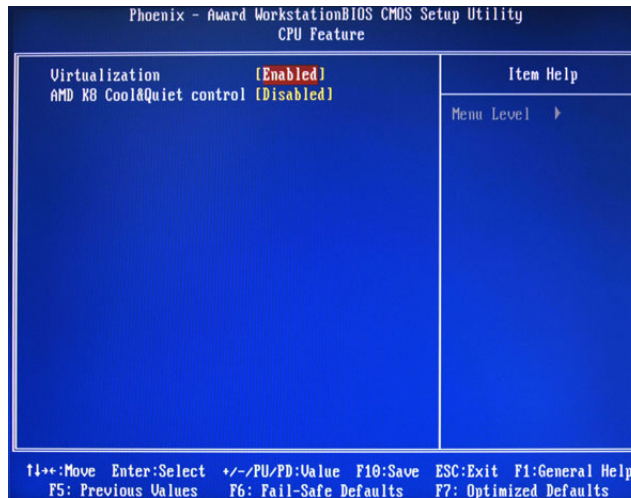
## Front Panel



Item	Icon	Component
A		HDD activity indicator
B		Drive bay door
C		Drive bay door eject button Press to open drive bay door and access the optical drive.
D		Media card reader
E		USB 2.0 ports
F		Headphone/Speaker-out/line-out jack
G		Microphone-in jack
H		CF I/II (CompactFlash Type I/II) slot
I		IEEE 1394 port (4-pin)
J		Power/sleep button

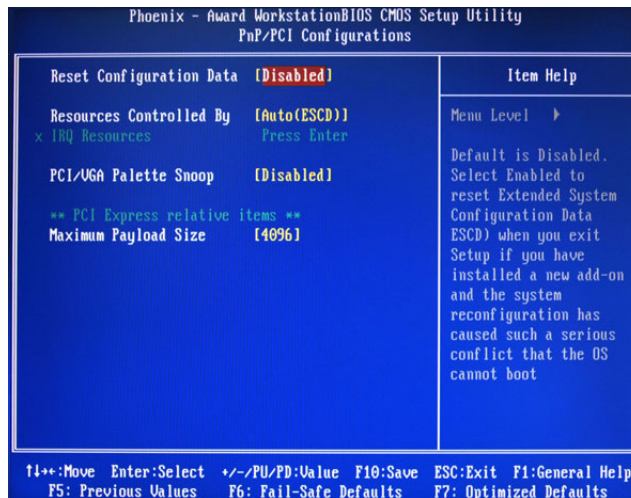
Parameter	Description	Option
Security Option	When set to system, BIOS will ask for the password each time the system boots up. If set to setup, the password is only required for access into the BIOS setup menus.	<b>Setup</b> System
MPS Version Control For OS	Specifies the version of the Multiprocessor Specification (MPS) that the mainboard will use.	<b>1.4</b> 1.1
OS Select For DRAM > 64 MB	Select OS/2 if the system is running OS/2 operating system and the system memory is more than 64 MB in size.	<b>Non-OS/2</b> OS/2
Full Screen Logo Show	Enables or disables the display of the full screen boot logo.	<b>Enabled</b> Disabled
Small Logo (EPA) Show	Enables or disables the display of the EPA logo.	<b>Disabled</b> Enabled

## CPU Feature



Parameter	Description	Option
Virtualization	Select whether to enable or disable the AMD Virtualization Technology (VT) function. VT allows a single platform to run multiple operating systems in independent partitions.	<b>Enabled</b> Disabled
AMD K8 Cool&Quiet control	When set to auto, the AMD Cool'n'Quiet driver dynamically adjust the CPU clock and VIA to reduce heat output from your computer and its power consumption.	<b>Disabled</b> Auto

## PnP/PCI Configurations



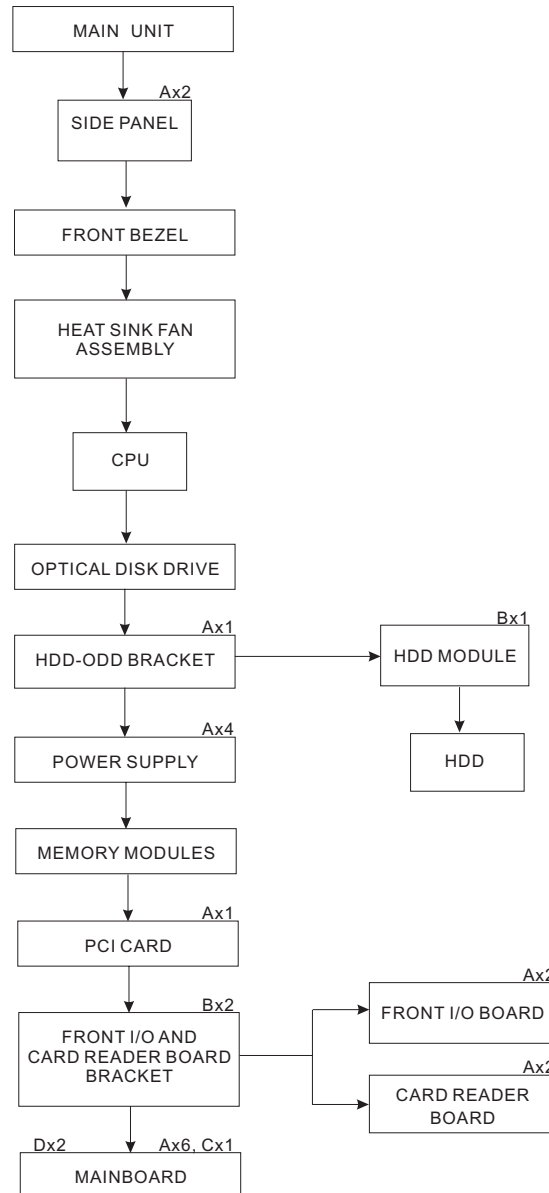
Parameter	Description	Option
Reset Configuration Data	If enabled, the system is forced to update Extended System Configuration Data (ESCD) and then is automatically set to the disabled mode. If disabled, the system ESCD will update only when the new configuration varies from the last one.	<b>Disabled</b> Enabled
Resources Controlled By	When set to auto ESCD, the system BIOS will detect the system resources and automatically assign the relative IRQ and DMA channel for each peripheral. When set to manual, you have to assign the IRQ and DMA for add-on cards.	<b>Auto ESCD</b> Manual
IRQ Resources	This parameter can be configured if the Resources Controlled By is set to Manual. It allows you to assign each system interrupt a type, depending on the type of device using the interrupt.	<b>IRQ-5</b> IRQ-7, IRQ-9, IRQ-10, IRQ-11, IRQ-14
PCI/VGA Palette Snoop	Enables or disables the system graphic card to allow VGA palette snooping.	<b>Disabled</b> Enabled
Maximum Payload Size	Set the maximum payload size for Transaction packets (TLP).	<b>4096</b> 128, 256, 512, 1024 2048

# Main Unit Disassembly

## External Modules Disassembly Flowchart

The flowchart below gives you a graphic representation on the entire disassembly sequence and instructs you on the components that need to be removed during servicing.

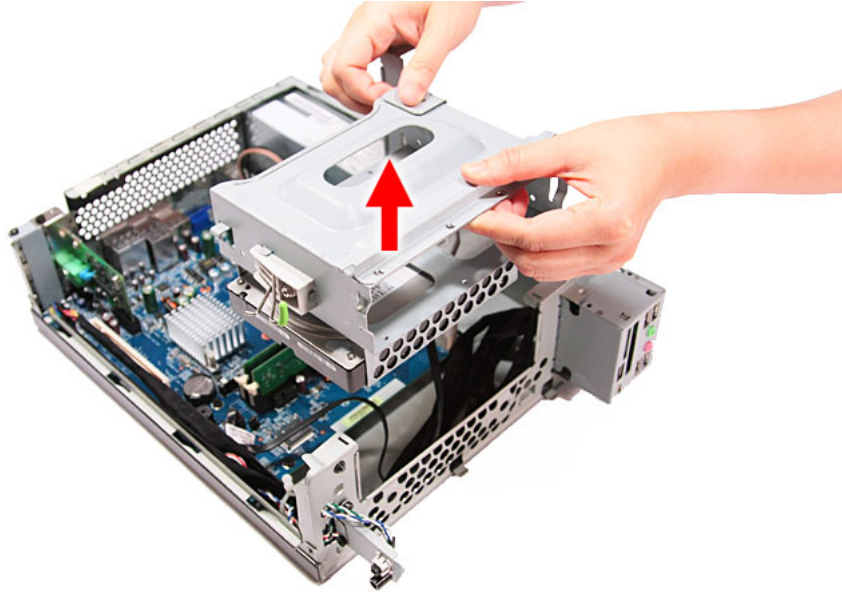
### MAIN UNIT DISASSEMBLY



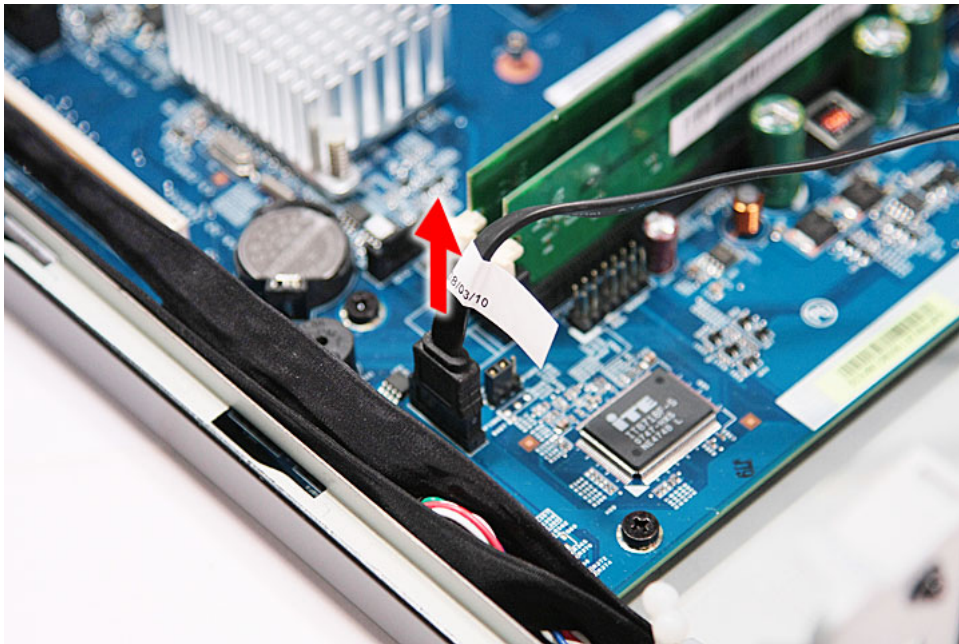
### Screw List

	Screw	Part No.
A	#6-32 L5 BZN	86.00J07.B60
B	#6-32*3/16 NI	86.5A5B6.012
C	M3xL5 BZN	86.1A324.5R0
D	Hex screw	N/A

- 
- b. Lift the bracket out of the chassis.



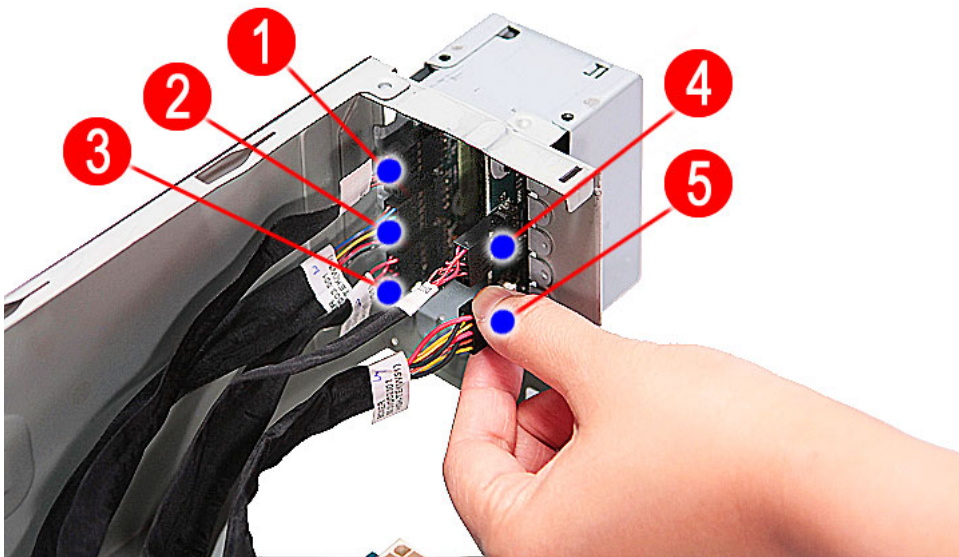
7. Disconnect the data cable from the mainboard.



---

## Removing the Front I/O and Card Reader Boards

1. See “Removing the Side Panel” on page 34.
2. See “Removing the Front Bezel” on page 35.
3. See “Removing the Heat Sink Fan Assembly” on page 36.
4. See “Removing the Processor” on page 38.
5. See “Removing the Optical Drive” on page 40.
6. See “Removing the Hard Disk Drive” on page 42.
7. See “Removing the Memory Modules” on page 49.
8. Disconnect one end of the three USB (1, 2, and 4), audio (2), and 1394 (5) cables from the rear of the I/O and card reader boards.



POST Code (Hex)	POST Routine Description
2Dh	<ol style="list-style-type: none"> <li>1 Initialize double-byte language font (Optional)</li> <li>2 Put information on screen display, including Award title, CPU type, CPU speed, full screen logo.</li> </ol>
2Eh	Reserved
2Fh	Reserved
30h	Reserved
31h	Reserved
32h	Reserved
33h	Reset keyboard if Early_Reset_KB is defined e.g. Winbond 977 series Super I/O chips. See also POST 63h.
34h	Reserved
35h	Test DMA Channel 0
36h	Reserved
37h	Test DMA Channel 1
38h	Reserved
39h	Test DMA page registers
3Ah	Reserved
3Bh	Reserved
3Ch	Test 8254
3Dh	Reserved
3Eh	Test 8259 interrupt mask bits for channel 1
3Fh	Reserved
40h	Test 8259 interrupt mask bits for channel 2
41h	Reserved
42h	Reserved
43h	Test 8259 functionality
44h	Reserved
45h	Reserved
46h	Reserved
47h	Initialize EISA slot
48h	Reserved
49h	<ol style="list-style-type: none"> <li>1 Calculate total memory by testing the last double word of each 64K page.</li> <li>2 Program write allocation for AMD K5 CPU.</li> </ol>
4Ah	Reserved
4Bh	Reserved
4Ch	Reserved
4Dh	Reserved
4Eh	<ol style="list-style-type: none"> <li>1 Program MTRR of M1 CPU</li> <li>2 Initialize L2 cache for P6 class CPU &amp; program CPU with proper cacheable range</li> <li>3 Initialize the APIC for P6 class CPU</li> <li>4 On MP platform, adjust the cacheable range to smaller one in case the cacheable ranges between each CPU are not identical</li> </ol>
4Fh	Reserved
50h	Initialize the USB Keyboard & Mouse

# FRU (Field Replaceable Unit) List

---

This chapter offers the FRU (Field Replaceable Unit) list in global configuration of the Aspire ASX1200/ ASX3200 desktop computer. Refer to this chapter whenever ordering the parts to repair or for RMA (Return Merchandise Authorization).

## NOTES:

- ❑ When ordering FRU parts, check the most up-to-date information available on your regional web or channel. For whatever reasons a part number is changed, it will NOT be noted on the printed Service Guide. For Acer authorized service providers, your Acer office may have a different part number code from those given in the FRU list of this printed Service Guide. You MUST use the local FRU list provided by your regional Acer office to order FRU parts for service.
- ❑ To scrap or to return the defective parts, follow the local government ordinance or regulations on how to dispose it properly, or follow the rules set by your regional Acer office on how to return it.
- ❑ This document will be updated as more information about the FRU list becomes available.

CLICK HERE TO **DOWNLOAD** THE COMPLETE MANUAL

- Thank you very much for reading the preview of the manual.
- You can download the complete manual from: [www.heydownloads.com](http://www.heydownloads.com) by clicking the link below



- Please note: If there is no response to CLICKING the link, please download this PDF first and then click on it.

CLICK HERE TO **DOWNLOAD** THE COMPLETE MANUAL