

Aspire 5940G Series Service Guide

Service guide files and updates are available on the ACER/CSD web; for more information, please refer to <http://csd.acer.com.tw>

PRINTED IN TAIWAN

CLICK HERE TO **DOWNLOAD** THE COMPLETE MANUAL

- Thank you very much for reading the preview of the manual.
- You can download the complete manual from: www.heydownloads.com by clicking the link below



- Please note: If there is no response to CLICKING the link, please download this PDF first and then click on it.

CLICK HERE TO **DOWNLOAD** THE COMPLETE MANUAL

System Specifications

Features

Below is a brief summary of the computer's many features:

Operating System

- Genuine Windows® 7™

Platform

- Intel® Mobile Calpella processor technology, featuring:
 - Intel® Ibex Peak-M (PM55)
 - Broadcom BCM57780A1KMLG for Giga LAN

System Memory

- Dual-Channel SDRAM support
- Up to 2 GB of DDR3 1066 MHz memory, upgradeable to 4 GB per slot, 8 GB total

Display and graphics

- 16:9 aspect ratio
- 15.6" HD 1366 x 768*
- 15.6" Full HD 1920 x 1080*
- ATI Mobility™ Radeon HD 4570*
- NVIDIA® GeForce® GT 130M*

TV Tuner

- Digital TV-tuner supporting DVB-T*

Storage subsystem

- 2.5" hard disk drive
- Super Multi/BD Combo/BD Writer
- Optical drive options:
 - Blu-ray Disc™ /DVD-Super Multi double-layer drive*
- 5-in-1 card reader

Audio

- Dolby® -optimized surround sound system with two built-in stereo speakers
- True5.1-channel surround sound output
- High-definition audio support

Using the Keyboard

The keyboard has full-sized keys and an embedded numeric keypad, separate cursor, lock, Windows, function and special keys.

Lock Keys and embedded numeric keypad

The keyboard has three lock keys which you can toggle on and off.

Lock key	Description
Caps Lock	When Caps Lock is on, all alphabetic characters typed are in uppercase.
Num Lock <Fn> + <F11>	When Num Lock is on, the embedded keypad is in numeric mode. The keys function as a calculator (complete with the arithmetic operators +, -, *, and /). Use this mode when you need to do a lot of numeric data entry. A better solution would be to connect an external keypad.
Scroll Lock <Fn> + <F12>	When Scroll Lock is on, the screen moves one line up or down when you press the up or down arrow keys respectively. Scroll Lock does not work with some applications.

The embedded numeric keypad functions like a desktop numeric keypad. It is indicated by small characters located on the upper right corner of the keycaps. To simplify the keyboard legend, cursor-control key symbols are not printed on the keys.

Desired access	Num Lock on	Num Lock off
Number keys on embedded keypad	Type numbers in a normal manner.	
Cursor-control keys on embedded keypad	Hold <Shift> while using cursor-control keys.	Hold <Fn> while using cursor-control keys.
Main keyboard keys	Hold <Fn> while typing letters on embedded keypad.	Type the letters in a normal manner.

Super-Multi Drive Module

Item	Specification	
Vendor & model name	HLDS GT20N LF, Toshiba TS-L633B LF, Sony AD-7580S LF, PLDS DS-8A3S LF	
Performance Specification	With CD Diskette	With DVD Diskette
Transfer rate	Sustained: 3,600 kB/s (24x) max.	Sustained: 11.08 Mbytes/s (8x) max.
Buffer Memory	1 MB	
Interface	SATA	
Applicable disc formats	DVD-ROM: 4.7GB (Single Layer), 8.5GB (Dual Layer) DVD-R: 3.95GB (Ver. 1.0: read only), 4.7GB (Ver. 2.0 for Authoring: read only), 4.7GB (Ver. 2.1 for General: read & write) (DL) 8.5GB (Ver. 3.0) DVD-RW: 4.7GB (Ver. 1.2/ Rev 1.0, 2.0, 3.0) DVD-RAM: 2.6GB/side (Ver. 1.0: read only) 1.46GB/side, 4.7GB/side (Ver. 2.2) DVD+R: 4.7GB (Ver. 1.3)(DL)8.5GB (Ver. 1.1)DVD+RW:4.7GB (Vol.1 Ver.1.3) CD-ROM Mode-1 data disc CD-ROM Mode-2 data disc CD-ROM XA, CD-I, Photo-CD Multi-Session, Video CD CD-Audio DiscMixed mode CD-ROM disc (data and audio) CD-ExtraCD-Text CD-R (Conforming to "Orange Book Part 2": read & write) D-RW (Conforming to "Orange Book Part 3": read & write)	
Loading mechanism	Drawer type manual load / Electrical release	
Power Requirement		
Input Voltage	DC 5 V +/- 5%	

Audio Interface

Item	Specification
Audio Controller	Realtek IC ALC889X-GR for High Definition Audio Codec
Audio onboard or optional	Onboard
Mono or Stereo	Stereo
Internal Microphone	·AC-coupled input,100mVP-P maximum
Internal Speaker / Quantity	2.1 speaker configuration: 2X 40hm 2W Main Speakers, ·220hm 3Watt 50cc Chamber Subwoofer

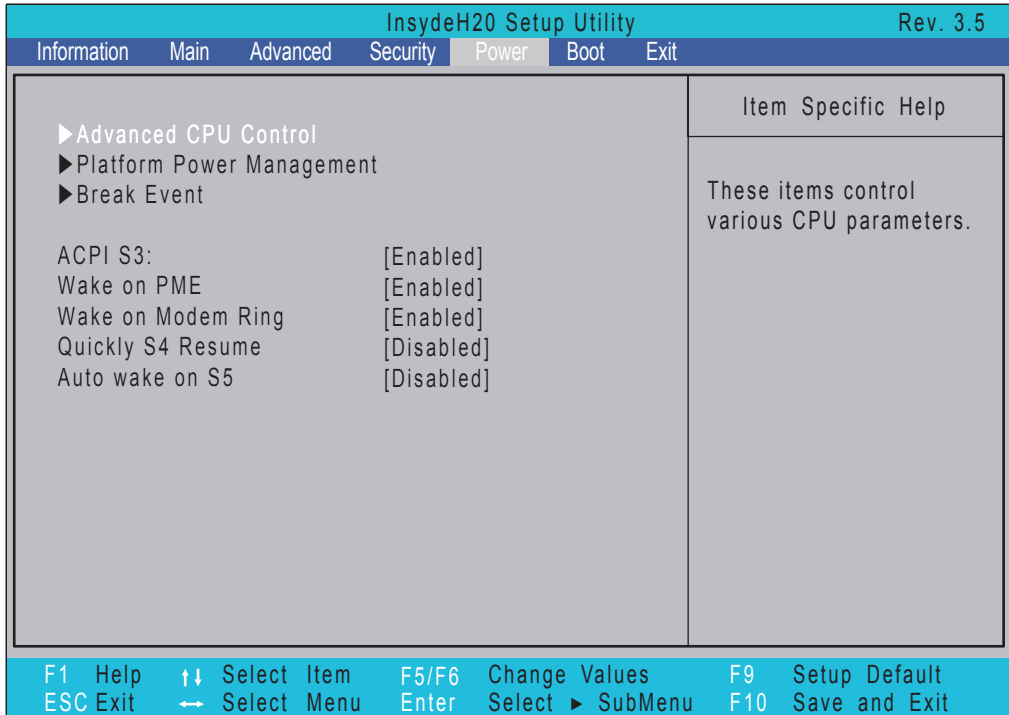
System Board Major Chips

Item	Controller
Core logic	<ul style="list-style-type: none"> Intel Mobile Calpella Intel Ibex Peak-M (PM55)
LAN	<ul style="list-style-type: none"> BCM57780A1KMLG for GIGA LAN
WLAN	<ul style="list-style-type: none"> Intel WLAN Shirley Peak

Power

The Advanced screen allows the user to configure the various advanced BIOS options.

IMPORTANT: Making incorrect settings to items on these pages may cause the system to malfunction. Unless you have experience adjusting these items, we recommend that you leave these settings at the default values. If making settings to items on these pages causes your system to malfunction or prevents the system from booting, open BIOS and choose Load Optimal Defaults in the Exit menu to boot up normally.



The table below describes the items, menus, and submenus in this screen. Settings in **boldface** are the default and suggested parameter settings.

Parameter	Description	Submenu Items
Advanced CPU Control	Enter the Advanced CPU Control menu.	<ul style="list-style-type: none"> P-States (IST) Boot performance mode Thermal Mode CMP Support Use XD capability VT Support SMRR Support C-States Enhanced C-States C-State Pop Up Mode C-State Pop Down Mode C4 Exit Timing Mode Deep C4 Hard C4E Enable C6
Platform Power Management	Enter the Platform Power Management menu.	<ul style="list-style-type: none"> PCI Clock Run

Using Boot Sequence Selector

The Boot Sequence Selector allows the boot order to be changed without accessing the BIOS. To use Boot Sequence Selector, perform the following steps:

1. Enter into DOS.
2. Execute **BS.exe** to display the usage screen.

```
d:\BOOTSEQ>bs
*** Boot Sequence Selector Version 0.03 ***
Create by Rockwell Chuang 10/01/2005.
Usage:
      BS [ 1 | 2 | 3 | 4 ]
BS 1 : [ Floppy ] => [ HardDisk ] => [ CD-ROM ] => [ LAN ]
BS 2 : [ HardDisk ] => [ CD-ROM ] => [ LAN ] => [ Floppy ]
BS 3 : [ CD-ROM ] => [ HardDisk ] => [ LAN ] => [ Floppy ]
BS 4 : [ LAN ] => [ Floppy ] => [ HardDisk ] => [ CD-ROM ]
d:\BOOTSEQ>
```

3. Select the desired boot sequence by entering the corresponding sequence. For example, enter **BS2** to change the boot sequence to HDD | CD ROM | LAN | Floppy.

Removing the Lower Covers

1. See "Removing the Battery Pack" on page 48.
2. Loosen the four captive screws in the Memory/HDD and WLAN covers.



3. Carefully open the Memory/HDD cover.



4. Carefully open the WLAN cover.



Removing the Keyboard

1. Locate the five securing clips on the top edge of the Keyboard.



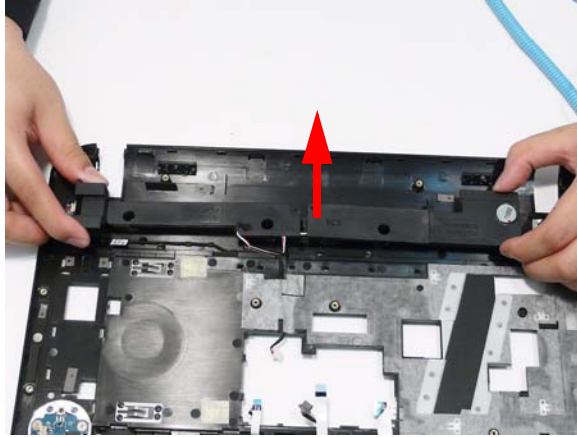
2. Starting with the central clip, release all five securing clips by pressing down with a suitable plastic tool.



3. Pry up the centre of the Keyboard as shown.



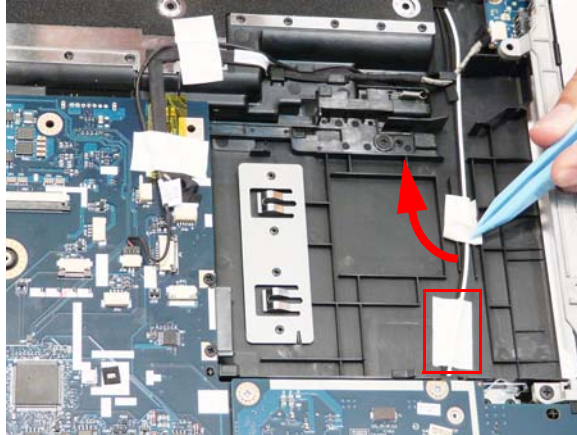
5. Using both hands, lift the Speaker Module upward to remove it from the Upper Cover.



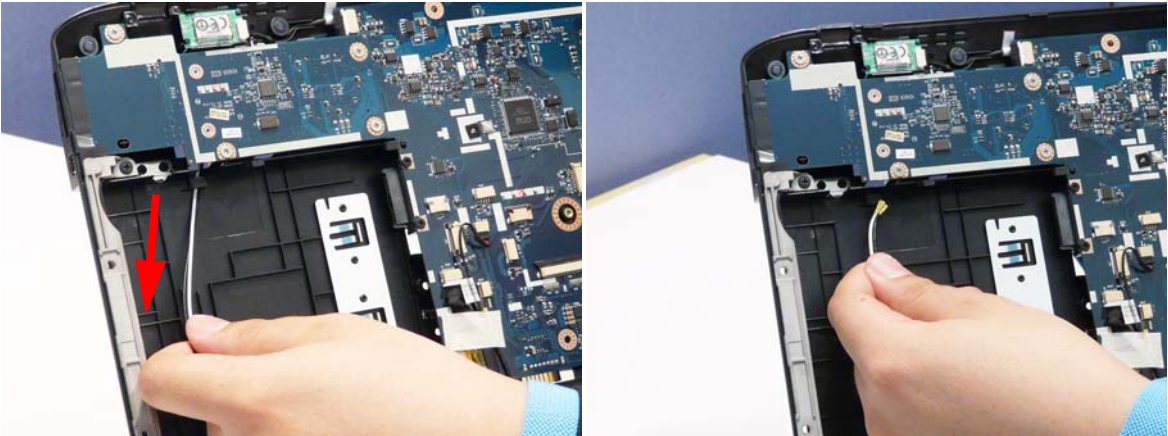
Removing the LCD Module

IMPORTANT: The LCD Module cannot be disassembled outside of factory conditions. If any part of the LCD Module is faulty, such as the camera, antenna or LCD panel, the whole module must be replaced.

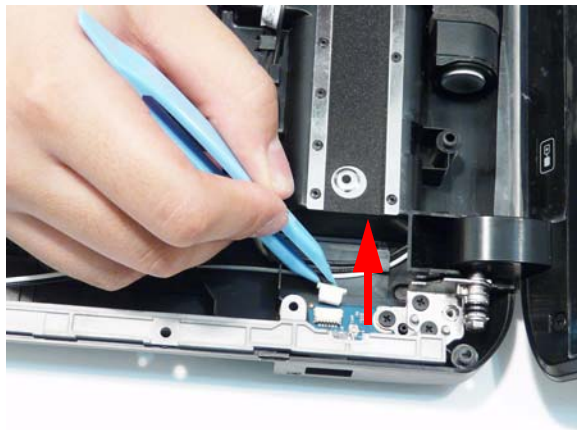
1. See “Removing the Upper Cover” on page 63.
2. Remove the adhesive tapes securing the Antenna cables in place.



3. Pull the Antenna cables through the cover as shown. Ensure that the Antennas are completely free from the cover.

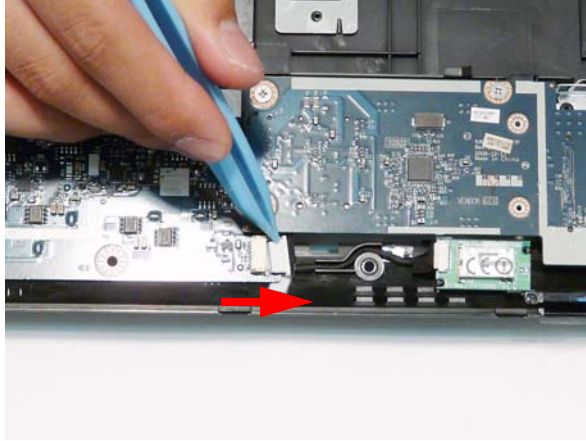


4. Disconnect the USB Board cable as shown.

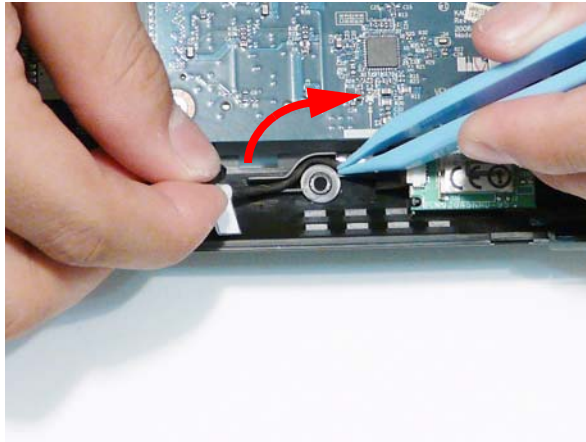


Removing the Bluetooth Module

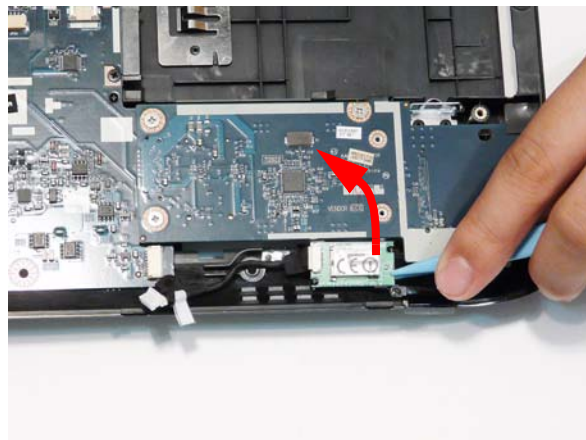
1. See "Removing the Upper Cover" on page 63.
2. Disconnect the Bluetooth cable from the Mainboard.



3. Remove the cable from the cable channel as shown.



4. Lift the module clear of the chassis.



CLICK HERE TO **DOWNLOAD** THE COMPLETE MANUAL

- Thank you very much for reading the preview of the manual.
- You can download the complete manual from: www.heydownloads.com by clicking the link below



- Please note: If there is no response to CLICKING the link, please download this PDF first and then click on it.

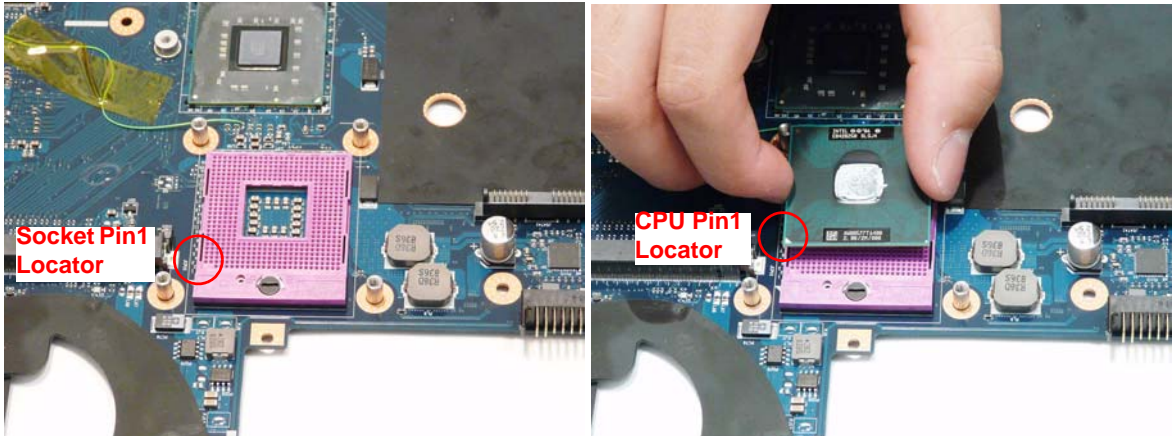
CLICK HERE TO **DOWNLOAD** THE COMPLETE MANUAL

Main Module Reassembly Procedure

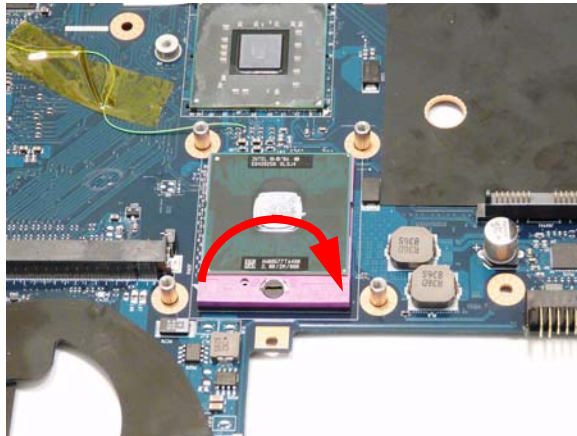
Replacing the CPU

IMPORTANT: The CPU has a Pin1 locator that must be positioned corresponding to the marker on the CPU socket.

1. Carefully turn the mainboard upside down (CPU side up), and place the CPU into the CPU socket as shown, taking note of the Pin1 locator.




2. Turn the securing screw 180° to secure the CPU in the socket.



2. Insert the two screws to secure the TouchPad Bracket in place.

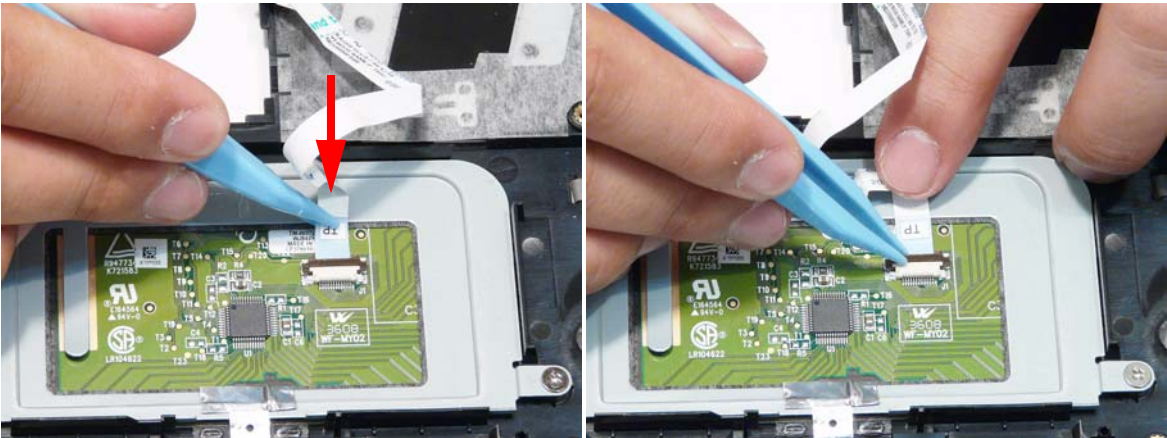


Step	Size	Quantity	Screw Type
TouchPad Bracket	M2.5*3	2	

3. Adhere the Finger Print Reader protection strip to the TouchPad Bracket as shown.

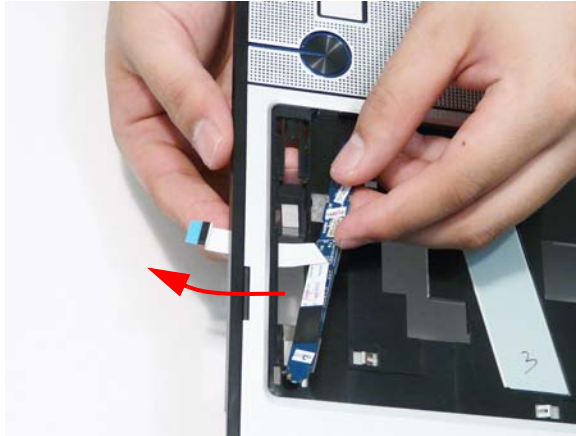


4. Connect the TouchPad FFC to the TouchPad and close the locking latch.

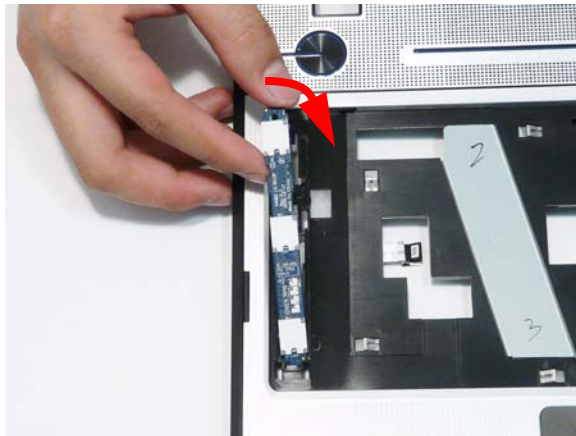


Replacing the Launch Board

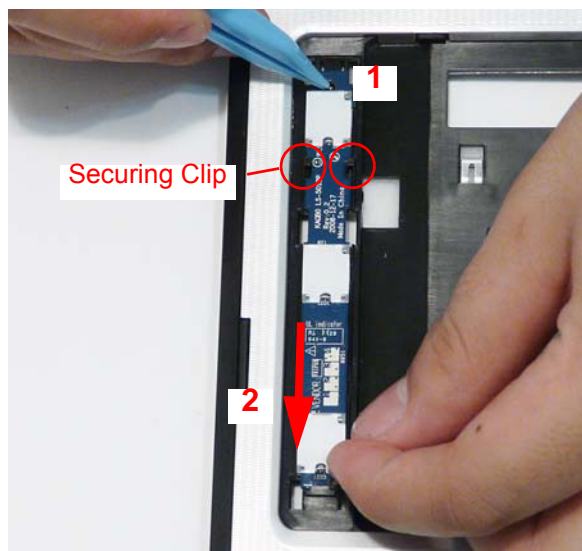
1. Feed the FFC through the penetration in the Upper Cover as shown.



2. Place the Launch Board into the Upper Cover.



3. Press down on the top of the board to engage the securing clips (1) and push the Launch Board in the direction of the arrow (2) to lock the board in place.



Replacing the DIMM Modules

1. Insert the DIMM Module in place.



2. Press down to lock the DIMM module in place.

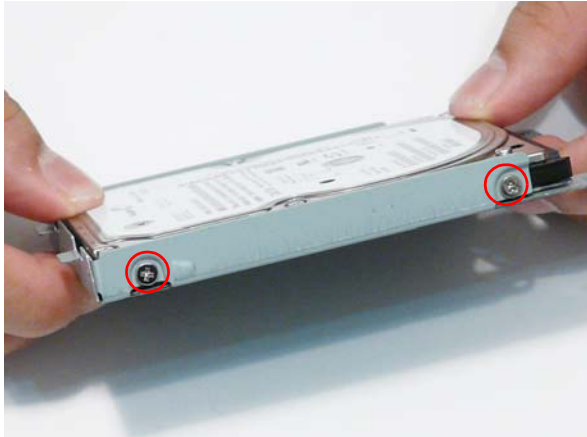


Replacing the Hard Disk Drive Module

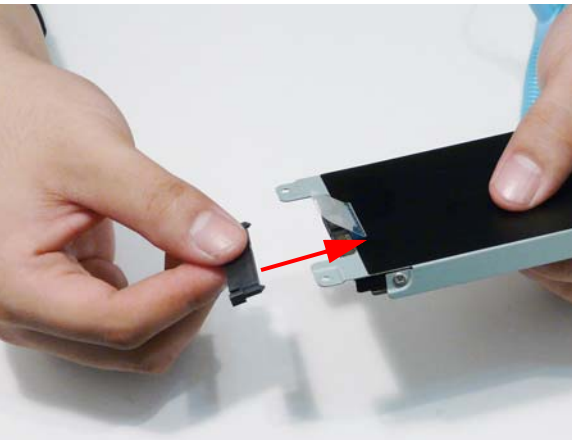
1. Place the HDD in the HDD carrier.



2. Replace the four screws (two each side) to secure the carrier.



3. Insert the HDD SATA interface connector as shown.



4. Place the HDD into the chassis as shown to engage the interface.



Sound Problems

If sound problems are experienced, perform the following actions one at a time to correct the problem.

1. Reboot the computer.
2. Navigate to **Start** → **Control Panel** → **System and Maintenance** → **System** → **Device Manager**. Check the Device Manager to determine that:
 - The device is properly installed.
 - There are no red Xs or yellow exclamation marks.
 - There are no device conflicts.
 - No hardware is listed under Other Devices.
3. Roll back the audio driver to the previous version, if updated recently.
4. Remove and reinstall the audio driver.
5. Ensure that all volume controls are set mid range:
 - a. Click the volume icon on the taskbar and drag the slider to 50. Ensure that the volume is not muted.
 - b. Click Mixer to verify that other audio applications are set to 50 and not muted.
6. Navigate to **Start** → **Control Panel** → **Hardware and Sound** → **Sound**. Ensure that Speakers are selected as the default audio device (green check mark).

NOTE: If Speakers does not show, right-click on the **Playback** tab and select **Show Disabled Devices** (clear by default).
7. Select Speakers and click **Configure** to start **Speaker Setup**. Follow the onscreen prompts to configure the speakers.
8. Remove and recently installed hardware or software.
9. Restore system and file settings from a known good date using **System Restore**.

If the issue is not fixed, repeat the preceding steps and select an earlier time and date.
10. Reinstall the Operating System.
11. If the Issue is still not resolved, see “Online Support Information” on page 219.

Post Codes

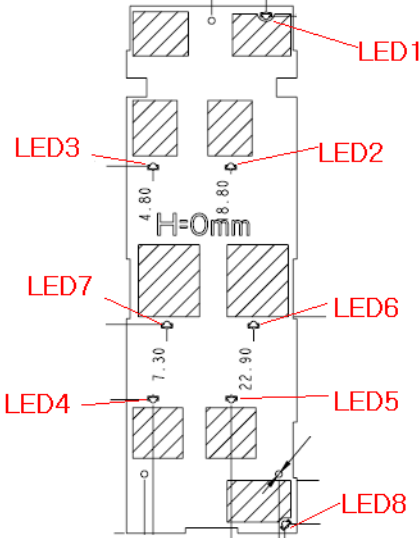
These tables describe the POST codes and descriptions during the POST.

Chipset POST Codes

The following table details the chipset POST codes and functions used in the POST.

Port 80 Code	Driver Name	Port 80 Code	Driver Name
01	PeiEventLog	41	StatusCode
02	OemServices	42	Variable
03	Siolnit	CF	SmmVariable
04	MonoStatusCode	43	EmuVariable
08	PentiumMCpuPeim	A2	TcgDxe
09	PlatformStage1	A3	PhysicalPresence
0A	Variable	AE	TpmDriver
0B	IchInit	AE	TcgSmm
0D	PlatformStage2	AE	PhysicalPresenceReadyToBoot
0E	IchSmbusArpDisabled	AD	DataHubRecordPolicy
12	ClockGen	86	Undi
13	OpPresence	90	SNP
14	TcgPei	91	BC
15	FindFv	92	PxeDhcp4
2F	Dxelpl	93	Ebc
10	LightMemoryInit	4D	IsaBus
11	S3ResumeSoftSmi	4E	IsaSerial
31	Crc32SectionExtract	6D	Ps2Mouse
A4	OemServices	4F	IdeBus
A5	EventLog	50	LightPciBus
32	ScriptSave	6E	UsbBot
33	AcpiS3Save	6F	UsbCbi0
34	SmartTimer	70	UsbCbi1
35	JpegDecoder	71	UsbKb
36	PcxDecoder	72	UsbMassStorage
8A	PlatformBds	74	UsbMouse
37	MpCpu	8F	Ehci
38	LegacyMetronome	73	Uhci
39	FtwLite	75	UsbBus
3A	Runtime	C2	SmmBase
3B	MonotonicCounter	C5	SmmDisp
3C	WatchDogTimer	C4	SmmReloc
3D	SecurityStub	C7	SmmRuntime
3E	Cpulo	C9	SmmThunk
3F	Cf9Reset	D8	OemServices
40	PcRtc	44	ChipsetInit

LS-5013P Media Board



Item	Description	Item	Description
LED1	HOLD LED	LED5	FWD LED
LED2	NEXT LED	LED6	STOP LED
LED3	PREVIOUS LED	LED7	PLAY/PAUSE LED
LED4	REW LED	LED8	MUTE LED

FRU (Field Replaceable Unit) List

This chapter gives you the FRU (Field Replaceable Unit) listing in global configurations of Aspire 5940G Series. Refer to this chapter whenever ordering for parts to repair or for RMA (Return Merchandise Authorization).

Please note that WHEN ORDERING FRU PARTS, you should check the most up-to-date information available on your regional web or channel. For whatever reasons a part number change is made, it will not be noted on the printed Service Guide. For ACER AUTHORIZED SERVICE PROVIDERS, your Acer office may have a DIFFERENT part number code from those given in the FRU list of this printed Service Guide. You MUST use the local FRU list provided by your regional Acer office to order FRU parts for repair and service of customer machines.

NOTE: To scrap or to return the defective parts, you should follow the local government ordinance or regulations on how to dispose it properly, or follow the rules set by your regional Acer office on how to return it.

Model	RO	Country	Acer Part No	Description	CPU
AS5940G-724G50Wn	EMEA	Hungary	LX.PFQ02.042	AS5940G-724G50Wn W7HP64ATHU1 MC M961GBCFPbkQ_V3 2*2G/500_L/ BT/6L2.2/5R/ CB_n2_FP_1.0D_GEb_HU11	Ci7720QM
AS5940G-724G50Wn	EMEA	Eastern Europe	LX.PFQ02.033	AS5940G-724G50Wn W7HP64ATEU7 MC M961GBCFPbkQ_V3 2*2G/500_L/ BT/6L2.2/5R/ CB_n2_FP_1.0D_GEb_ENQ1	Ci7720QM
AS5940G-724G50Wn	EMEA	Eastern Europe	LX.PFQ02.035	AS5940G-724G50Wn W7HP64ATEU7 MC M961GBCFPbkQ_V3 2*2G/500_L/ BT/6L2.2/5R/ CB_n2_FP_1.0D_GEb_SL11	Ci7720QM
AS5940G-724G50Wn	EMEA	Italy	LX.PFQ02.022	AS5940G-724G50Wn W7HP64ATIT1 MC M961GBCFPbkQ_V3 2*2G/500_L/ BT/6L2.2/5R/ CB_n2_FP_1.0D_GEb_IT11	Ci7720QM
AS5940G-724G50Wn	EMEA	Turkey	LX.PFQ02.007	AS5940G-724G50Wn EM W7HP64EMATTR1 MC M961GBCFPbkQ_V3 2*2G/500_L/BT/ 6L2.2/5R/CB_n2_FP_1.0D_GEb_TR31	Ci7720QM
AS5940G-724G50Wn	EMEA	Eastern Europe	LX.PFQ02.034	AS5940G-724G50Wn W7HP64ATEU5 MC M961GBCFPbkQ_V3 2*2G/500_L/ BT/6L2.2/5R/ CB_n2_FP_1.0D_GEb_PL71	Ci7720QM
AS5940G-724G50Wn	EMEA	Holland	LX.PFQ02.040	AS5940G-724G50Wn W7HP64ATNL1 MC M961GBCFPbkQ_V3 2*2G/500_L/ BT/6L2.2/5R/ CB_n2_FP_1.0D_GEb_NL11	Ci7720QM
AS5940G-724G50Wn	EMEA	Middle East	LX.PFQ02.011	AS5940G-724G50Wn EM W7HP64EMATME6 MC M961GBCFPbkQ_V3 2*2G/500_L/BT/ 6L2.2/5R/CB_n2_FP_1.0D_GEb_ES61	Ci7720QM
AS5940G-724G50Wn	EMEA	South Africa	LX.PFQ02.016	AS5940G-724G50Wn EM W7HP64EMATZA4 MC M961GBCFPbkQ_V3 2*2G/500_L/BT/ 6L2.2/5R/CB_n2_FP_1.0D_GEb_ES61	Ci7720QM
AS5940G-724G50Wn	EMEA	Middle East	LX.PFQ02.008	AS5940G-724G50Wn EM W7HP64EMATME3 MC M961GBCFPbkQ_V3 2*2G/500_L/BT/ 6L2.2/5R/CB_n2_FP_1.0D_GEb_ES81	Ci7720QM
AS5940G-724G50Wn	EMEA	Middle East	LX.PFQ02.018	AS5940G-724G50Wn EM W7HP64EMATME9 MC M961GBCFPbkQ_V3 2*2G/500_L/BT/ 6L2.2/5R/CB_n2_FP_1.0D_GEb_ES81	Ci7720QM
AS5940G-724G50Wn	EMEA	South Africa	LX.PFQ02.015	AS5940G-724G50Wn EM W7HP64EMATZA1 MC M961GBCFPbkQ_V3 2*2G/500_L/BT/ 6L2.2/5R/CB_n2_FP_1.0D_GEb_ES81	Ci7720QM
AS5940G-724G50Wn	EMEA	Algeria	LX.PFQ02.017	AS5940G-724G50Wn EM W7HP64EMATDZ1 MC M961GBCFPbkQ_V3 2*2G/500_L/BT/ 6L2.2/5R/CB_n2_FP_1.0D_GEb_ES81	Ci7720QM

Vendor	Description	ITEM_No
HGST	N320GB5.4K S	"HDD HGST 2.5"" 5400rpm 320GB HTS545032B9A300 Panther B SATA LF F/W:C60F Disk imbalance criteria = 0.014g-cm"
WD	N320GB5.4K S	"HDD WD 2.5"" 5400rpm 320GB WD3200BEVT-22ZCT0 ML160 SATA LF F/W:11.01A11"
SEAGATE	N500GB5.4K S	"HDD SEAGATE 2.5"" 5400rpm 500GB ST9500325AS Wyatt SATA LF F/W:0001SDM1"
TOSHIBA	N500GB5.4K S	"HDD TOSHIBA 2.5"" 5400rpm 500GB MK5055GSX Libra SATA LF F/W:FG001J"
HGST	N500GB5.4K S	"HDD HGST 2.5"" 5400rpm 500GB HTS545050B9A300 Panther B SATA LF F/W:C60F"
HGST	N500GB5.4K S	"HDD HGST 2.5"" 5400rpm 500GB HTS545050B9A300 Panther B SATA LF F/W:C60F Disk imbalance criteria = 0.014g-cm"
WD	N500GB5.4K S	"HDD WD 2.5"" 5400rpm 500GB WD5000BEVT-22ZAT0 ML250 SATA LF F/W:01.01A01"
Keyboard		
ACER	AC4B	Keyboard ACER AC4B SM50 Internal 14 Standard Black Backlit
ACER	AC4B	Keyboard ACER AC4B SM50 Internal 14 Standard Black Backlit
ACER	AC4B	Keyboard ACER AC4B SM50 Internal 14 Standard Black Backlit
ACER	AC4B	Keyboard ACER AC4B SM50 Internal 14 Standard Black Backlit
LAN		
Broadcom	BCM57780	Broadcom BCM57780
Broadcom	BCM57780	Broadcom BCM57780
Broadcom	BCM57780	Broadcom BCM57780
Broadcom	BCM57780	Broadcom BCM57780
LCD		
AUO	NLED15.6W XGAG	"LED LCD AUO 15.6""W WXGA Glare B156XW02 V0 LF 220nit 8ms 500:1"
SAMSUNG	NLED15.6W XGAG	"LED LCD SAMSUNG 15.6""W WXGA Glare LTN156AT02-A02 LF 220nit 8ms 500:1"
LPL	NLED15.6W XGAG	"LED LCD LPL 15.6""W WXGA Glare LP156WH2-TLE1 LF 220nit 8ms 400:1"
CMO	NLED15.6W XGAG	"LED LCD CMO 15.6""W WXGA Glare N156B6-L06 LF 220nit 8ms 500:1"
INNOLUX	NLED15.6W XGAG	"LED LCD INNOLUX 15.6""W WXGA Glare BT156GW01 V2 LF 220nit 8ms 600:1"
AUO	NLED15.6W XGAG	"LED LCD AUO 15.6""W WXGA Glare B156XW02 V0 LF 220nit 8ms 500:1"
SAMSUNG	NLED15.6W XGAG	"LED LCD SAMSUNG 15.6""W WXGA Glare LTN156AT02-A02 LF 220nit 8ms 500:1"
LPL	NLED15.6W XGAG	"LED LCD LPL 15.6""W WXGA Glare LP156WH2-TLE1 LF 220nit 8ms 400:1"
CMO	NLED15.6W XGAG	"LED LCD CMO 15.6""W WXGA Glare N156B6-L06 LF 220nit 8ms 500:1"
INNOLUX	NLED15.6W XGAG	"LED LCD INNOLUX 15.6""W WXGA Glare BT156GW01 V2 LF 220nit 8ms 600:1"
AUO	NLED15.6W XGAG	"LED LCD AUO 15.6""W WXGA Glare B156XW02 V0 LF 220nit 8ms 500:1"

CLICK HERE TO **DOWNLOAD** THE COMPLETE MANUAL

- Thank you very much for reading the preview of the manual.
- You can download the complete manual from: www.heydownloads.com by clicking the link below



- Please note: If there is no response to CLICKING the link, please download this PDF first and then click on it.

CLICK HERE TO **DOWNLOAD** THE COMPLETE MANUAL