

Aspire 4730Z/4730ZG/4330 Series Service Guide

Service guide files and updates are available on the ACER/CSD web; for more information, please refer to <http://csd.acer.com.tw>

PRINTED IN TAIWAN

CLICK HERE TO **DOWNLOAD** THE COMPLETE MANUAL

- Thank you very much for reading the preview of the manual.
- You can download the complete manual from: www.heydownloads.com by clicking the link below



- Please note: If there is no response to CLICKING the link, please download this PDF first and then click on it.

CLICK HERE TO **DOWNLOAD** THE COMPLETE MANUAL

System Specifications

Features

Below is a brief summary of the computer's many features:

NOTE: Items marked with * denote only selected models.

Operating System

- Genuine Windows Vista™

Platform

- Intel® Pentium® Dual-Core mobile processor*
- Intel® Celeron® Dual-Core processor*
- Intel® Celeron® processor*
- Mobile Intel® PM45 Express Chipset*
- Mobile Intel® GL40 Express Chipset*
- Acer InviLink™ Nplify™ 802.11b/g/Draft-N*
- Acer InviLink™ 802.11b/g*

System Memory

- Dual-Channel DDR2 SDRAM support
- Up to 2 GB of DDR2 667 MHz memory, upgradeable to 4 GB using two soDIMM modules*

Display and graphics

- 14.1" WXGA 1280 x 800
- Mobile Intel® GL40 Express Chipset*
- ATI Mobility Radeon™ HD 3470*

Storage subsystem

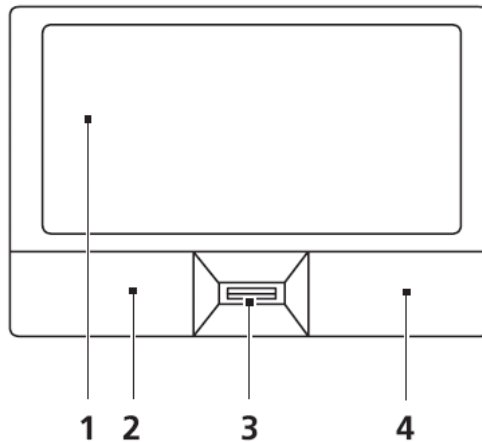
- 2.5" hard disk drive
- Optical drive options:
 - DVD-Super Multi double-layer drive*
 - DVD/CD-RW combo drive*
- 5-in-1 card reader

Audio

- Two built-in stereo speakers
- High-definition audio support
- MS-Sound compatible
- Built-in microphone

Touchpad Basics (with fingerprint reader)

The following items show you how to use the touchpad with Acer Bio-Protection fingerprint reader:



- Move your finger across the touchpad (2) to move the cursor.
- Press the left (1) and right (4) buttons located beneath the touchpad to perform selection and execution functions. These two buttons are similar to the left and right buttons on a mouse. Tapping on the touchpad is the same as clicking the left button.
- Use Acer Bio-Protection fingerprint reader (3) supporting Acer FingerNav 4-way control function (only for certain models) or the 4-way scroll (3) button (only for certain models) to scroll up or down and move left or right a page. This fingerprint reader or button mimics your cursor pressing on the right scroll bar of Windows applications.

Function	Left Button (1)	Right Button (3)	Main touchpad (2)
Execute	Quickly click twice.		Tap twice (at the same speed as double-clicking a mouse button).
Select	Click once.		Tap once.
Drag	Click and hold, then use finger on the touchpad to drag the cursor.		Tap twice (at the same speed as double-clicking a mouse button); rest your finger on the touchpad on the second tap and drag the cursor.
Access context menu		Click once.	

NOTE: When using the touchpad, keep it - and your fingers - dry and clean. The touchpad is sensitive to finger movement; hence, the lighter the touch, the better the response. Tapping too hard will not increase the touchpad's responsiveness.

Wireless Module 802.11b/g

Item	Specification
Chipset	Intel Shirley Peak and Echo Peak (for Centrino platform) Atheros WLAN XB63 and Broadcom WLAN BCM4312 (for Non-Centrino)
Data throughput	11~54 Mbps, up to 270 Mbps for Draft-N
Protocol	802.11b+g, Draft-N
Interface	PCI bus (mini PCI socket for wireless module)

Hard Disk Drive Interface

Item	Specifications			
Vendor & Model Name	Hitachi 5K250-250 5K250-160 5K250-120	Hitachi 5K350-250 5K350-160 5K350-120	Seagate ST9250827AS ST9160827AS ST9120817AS	Seagate ST9320320AS ST9160310AS
Capacity (MB)	250, 160, 120	320, 160, 120	250, 160, 120	320, 160
Bytes per sector	512	512	512	512
Data heads	4, 3, 2	4, 2, 2	4, 3, 2	4, 2
Drive Format				
Disks	2, 2, 1	2, 1, 1	2, 2, 1	2 or 1, 1
Spindle speed (RPM)	5400	5400	5400	5400
Performance Specifications				
Buffer size	8 MB	8 MB	8 MB	8 MB
Interface	SATA	SATA	SATA	SATA
Internal transfer rate (Mbits/sec, max)	643 ~ 665	674 ~ 729	778	352
I/O data transfer rate (Mbytes/sec max)	150 / 300	300	300	150
DC Power Requirements				
Voltage	5V ±5%	5V ±5%	5V ±5%	5V ±5%

Item	Specifications			
Vendor & Model Name	Toshiba MK2546GSX MK1646GSX MK1246GSX	Toshiba MK1252GSX	WD WD2500BEVS WD1200BEVS	WD WD3200BEVT WD1600BEVT
Capacity (MB)	250, 160, 120	120	250, 120	320, 160
Bytes per sector	512	512	512	512
Data heads	4, 3, 2	2	4, 2	4, 2
Drive Format				
Disks	2, 2, 1	1	2, 1	2, 1
Spindle speed (RPM)	5400	5400	5400	5400
Performance Specifications				
Buffer size	8 MB	8 MB	8 MB	8 MB
Interface	SATA	SATA	SATA	SATA

Setting a Password

Follow these steps as you set the user or the supervisor password:

1. Use the ↑ and ↓ keys to highlight the Set Supervisor Password parameter and press the **Enter** key. The Set Supervisor Password box appears:

Set Supervisor Password		
Enter New Password	[]
Confirm New Password	[]

2. Type a password in the “Enter New Password” field. The password length can not exceeds 8 alphanumeric characters (A-Z, a-z, 0-9, not case sensitive). Retype the password in the “Confirm New Password” field.

IMPORTANT: Be very careful when typing your password because the characters do not appear on the screen.

3. Press **Enter**. After setting the password, the computer sets the User Password parameter to “Set”.
4. If desired, you can opt to enable the Password on boot parameter.
5. When you are done, press F10 to save the changes and exit the BIOS Setup Utility.

Removing a Password

Follow these steps:

1. Use the ↑ and ↓ keys to highlight the Set Supervisor Password parameter and press the **Enter** key. The Set Password box appears:

Set Supervisor Password		
Enter current password	[]
Enter New Password	[]
Confirm New Password	[]

2. Type the current password in the Enter Current Password field and press **Enter**.
3. Press **Enter** twice **without** typing anything in the Enter New Password and Confirm New Password fields. The computer then sets the Supervisor Password parameter to “Clear”.
4. When you have changed the settings, press u to save the changes and exit the BIOS Setup Utility.

Machine Disassembly and Replacement

This chapter contains step-by-step procedures on how to disassemble the notebook computer for maintenance and troubleshooting.

Disassembly Requirements

To disassemble the computer, you need the following tools:

- Wrist grounding strap and conductive mat for preventing electrostatic discharge
- Flat screwdriver
- Philips screwdriver
- Plastic flat screwdriver
- Plastic tweezers

NOTE: The screws for the different components vary in size. During the disassembly process, group the screws with the corresponding components to avoid mismatch when putting back the components.

IMPORTANT: Various images depict the use of a regular metal screwdriver, however, a plastic screwdriver is advised when disassembling parts near or around the motherboard and to prevent scratching of the computer surface.

5. Detach the WLAN board from the WLAN socket.



NOTE: When attaching the antenna back to the WLAN board, make sure the cables are sitting in the housing to prevent damage.

Removing the Keyboard

1. See “Removing the Battery Pack” on page 44.
2. Using a plastic pry, push in the two securing latches and slide the pry under the keyboard.



3. Once both latches are released, lift the keyboard away from the chassis as shown.



4. Turn the keyboard over on the Touch Pad area to expose the FFC cable.



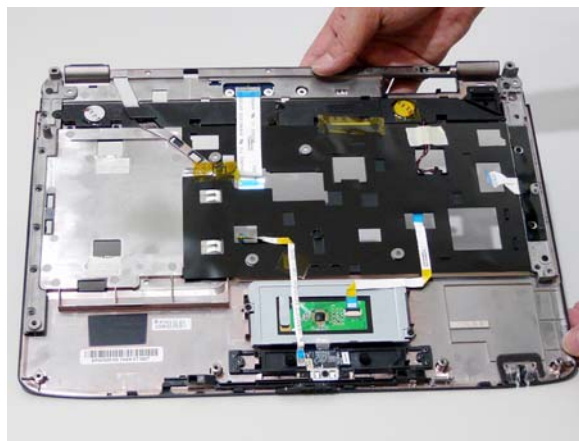
Release the securing latches and disconnect E as shown.



15. Remove the upper cover by lifting upward from the chassis, rear edge first.



16. Turn the upper cover over. The upper cover appears as follows.



NOTE: Avoid pulling on the cables directly to prevent damage to the connectors.

NOTE: Use the pull-tabs on the FFC cables whenever available to prevent damage to the FFC cables.

CLICK HERE TO **DOWNLOAD** THE COMPLETE MANUAL

- Thank you very much for reading the preview of the manual.
- You can download the complete manual from: www.heydownloads.com by clicking the link below



- Please note: If there is no response to CLICKING the link, please download this PDF first and then click on it.

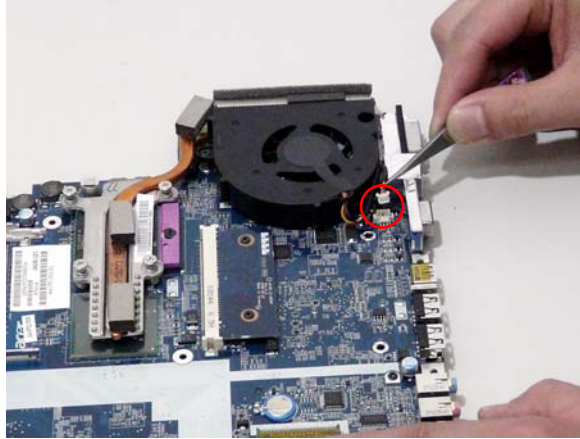
CLICK HERE TO **DOWNLOAD** THE COMPLETE MANUAL

4. Disconnect the I/O Board cable and remove the board.

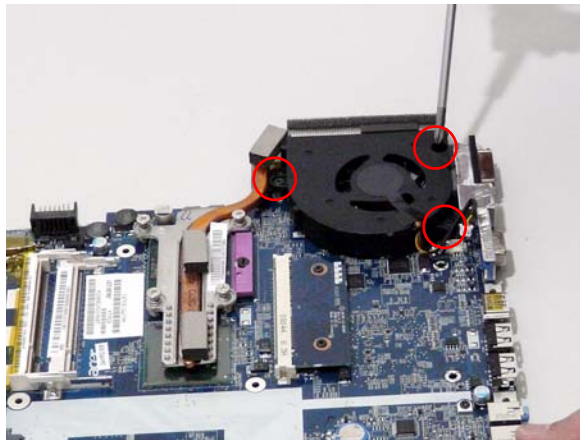



Removing the CPU Fan

1. See "Removing the Main Board" on page 86.
2. Disconnect the Fan cable from the Mainboard.



3. Remove the three securing screws from the Fan module.




Step	Size	Quantity	Screw Type
CPU Fan	M2*4-NI (NL)	3	

Removing the LCD Panel

- 1. See "Removing the LCD Bezel" on page 95.
- 2. Remove the two securing screws from the LCD Module.

IMPORTANT:The leftside screw holds the ground connector in place. Ensure that the ground is replaced during reassembly.



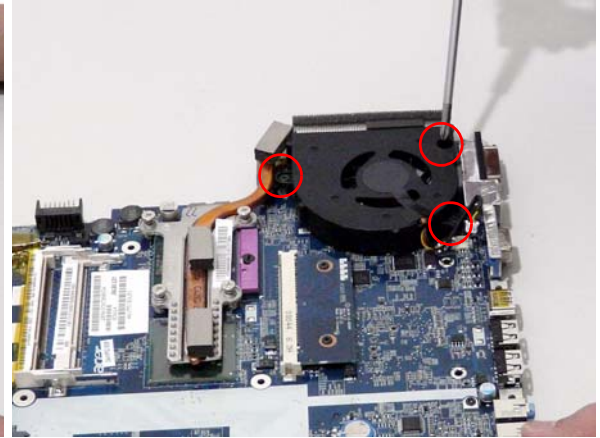
Step	Size	Quantity	Screw Type
LCD Panel	M2.5*5 (NL)	2	

- 3. Lift the LCD Panel clear of the LCD Module.

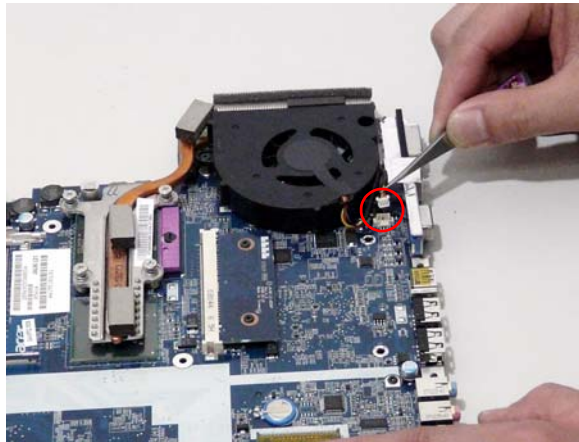


Replacing the CPU Fan Module

1. Align the Fan Module on the screw brackets.
2. Replace the 3 screws and secure.

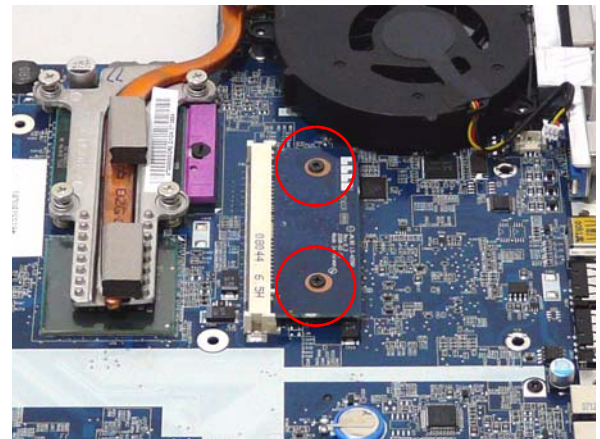
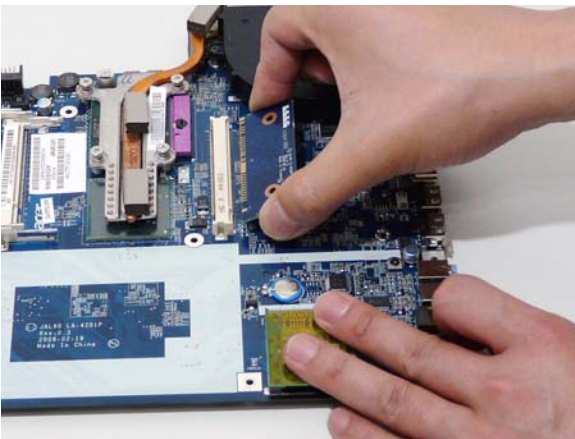


3. Connect the Fan cable to the Mainboard.



Replacing the HDMI Module

1. Insert the HDMI Module as shown, and press down to locate in place.
2. Replace the 2 screws to secure.

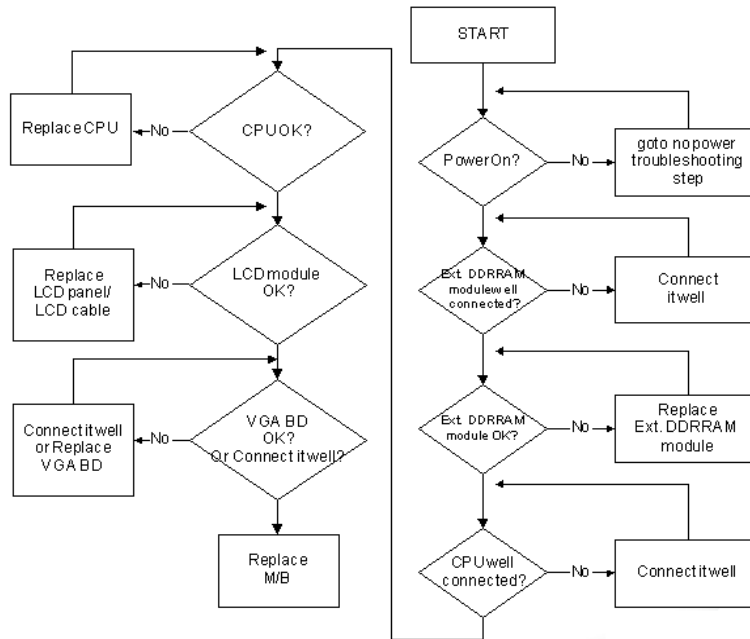


3. Press down on the areas marked below to secure in place.



No Display Issue

If the **Display** doesn't work, perform the following actions one at a time to correct the problem. Do not replace a non-defective FRUs:



No POST or Video

If the POST or video doesn't display, perform the following actions one at a time to correct the problem.

1. Make sure that the internal display is selected. On this notebook model, switching between the internal display and the external display is done by pressing **Fn+F5**. Reference Product pages for specific model procedures.
2. Make sure the computer has power by checking at least one of the following occurs:
 - Fans start up
 - Status LEDs light up

If there is no power, see “Power On Issue” on page 130.

3. Drain any stored power by removing the power cable and battery and holding down the power button for 10 seconds. Reconnect the power and reboot the computer.
4. Connect an external monitor to the computer and switch between the internal display and the external display is by pressing **Fn+F5** (on this model).

If the POST or video appears on the external display, see “LCD Failure” on page 133.

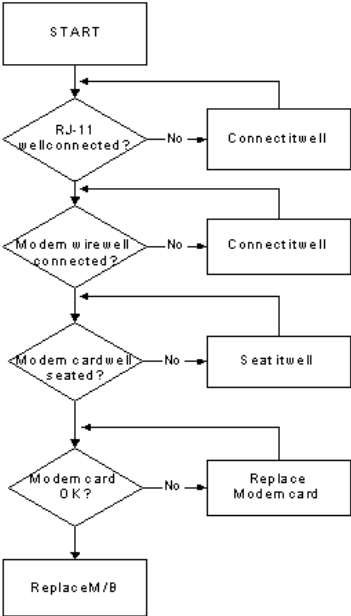
5. Disconnect power and all external devices including port replicators or docking stations. Remove any memory cards and CD/DVD discs. Restart the computer.

If the computer boots correctly, add the devices one by one until the failure point is discovered.

6. Reseat the memory modules.
7. Remove the drives (see “Disassembly Process” on page 42).
8. If the Issue is still not resolved, see “Online Support Information” on page 185.

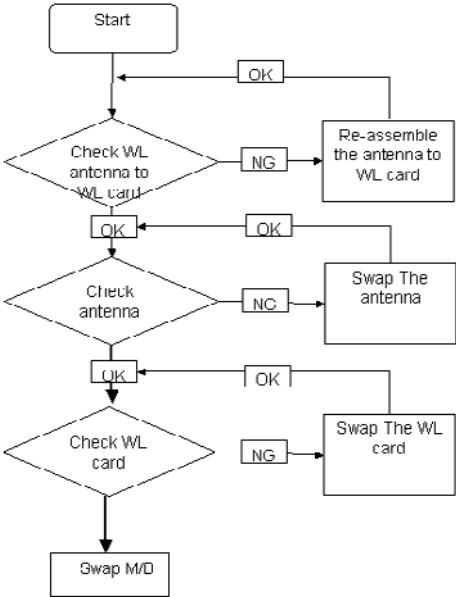
Modem Function Failure

If the internal **Modem** fails, perform the following actions one at a time to correct the problem. Do not replace a non-defective FRUs:



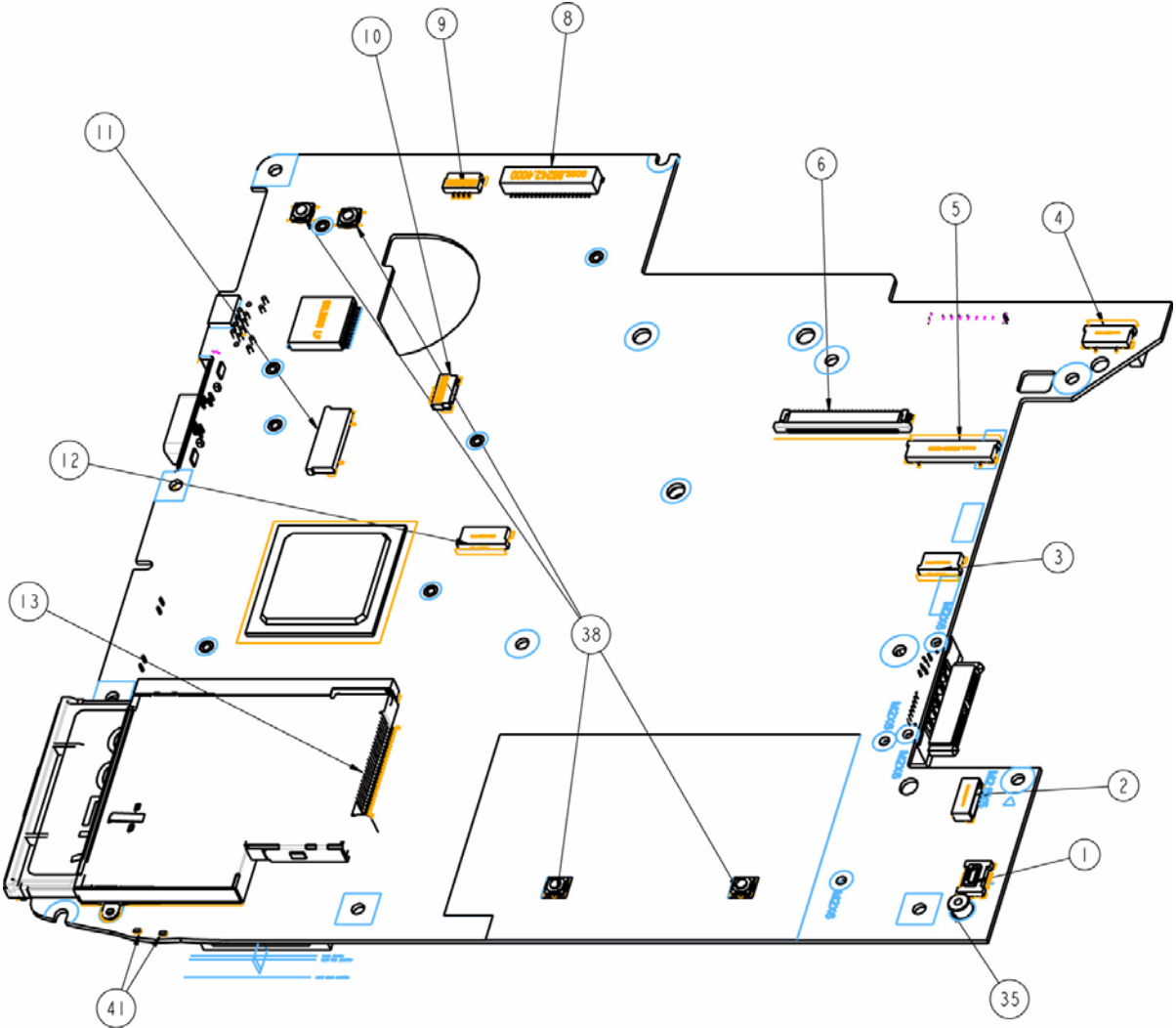
Wireless Function Failure

If the **WLAN** fails, perform the following actions one at a time to correct the problem. Do not replace a non-defective FRUs:





Jumper and Connector Locations

Top View



Location	Description	Location	Description
1	MDC Conn	10	Speaker Conn
2	BT Conn	11	Function PCB to MB Conn
3	Finger to MB Conn	12	TP to MB Conn
4	Media PCB to MB Conn	13	Express Card Conn
5	Power PCB to MB Conn	35	MDC Standoff (M2xH3)
6	KB Conn	38	Switch
8	LVDS Cnn	41	LED
9	MIC Conn		

Category	Description	Acer Part No.
HDD		
	HDD SATA 120G 5400RPM HGST HTS542512K9SA00	KH.12007.014
	HDD SATA 120G 5400RPM TOSHIBA MK1246GSX 0FA	KH.12004.007
	HDD SATA 120G 5400RPM SEAGATE ST9120817AS	KH.12001.032
	HDD SATA 120G 5400RPM WD WD1200BEVS-22UST0	KH.12008.019
	HDD SATA 160G 5400RPM HGST HTS542516K9SA00	KH.16007.016
	HDD SATA 160G 5400RPM HGST HTS543216L9A300 0FA	
	HDD SATA 160G 5400RPM TOSHIBA MK1646GSX	KH.16004.002
	HDD SATA 160G 5400RPM TOSHIBA MK1652GSX 0FA	
	HDD SATA 160G 5400RPM SEAGATE ST9160827AS	KH.16001.029
	HDD SATA 160G 5400RPM WD WD1600BEVT-22ZCT0	KH.16008.022
	HDD SATA 250G 5400RPM HGST HTS542525K9SA00	KH.25007.011
	HDD SATA 250G 5400RPM HGST HTS543225L9A300 0FA	
	HDD SATA 250G 5400RPM TOSHIBA MK2546GSX	KH.25004.001
	HDD SATA 250G 5400RPM SEAGATE ST9250827AS	KH.25001.011
	HDD SATA 250G 5400RPM WD WD2500BEVS-22UST0	KH.25008.018
	HDD SATA 320G 5400RPM HGST HTS543232L9A300	KH.32007.004
	HDD SATA 320G 5400RPM SEAGATE ST9320320AS	KH.32001.008
HDD SATA 320G 5400RPM WD WD3200BEVT-22ZCT0	KH.32008.013	
HDD SATA 320G 5400RPM TOSHIBA MK3252GSX 0FA		
	HDD CARRIER	33.AT902.003

Model	RO	Country	Acer P/N	Description	CPU	BT
AS4330-161G16Mi	AAP	Thailand	LX.ATV0C.011	AS4330-161G16Mi LINPUSATH1 UMACE 1*1G/160/ BT/6L/5R/ CB_bg_0.3D_HG_EN11	CMT1600	BT 2.0
AS4330-171G16Mi	AAP	Thailand	LX.ATV0C.010	AS4330-171G16Mi LINPUSATH1 UMACE 1*1G/160/ BT/6L/5R/ CB_bg_0.3D_HG_EN11	CMT1700	BT 2.0
AS4330-571G12Mi	TWN	GCTWN	LX.ATV0Y.006	AS4330-571G12Mi VHB32ATTW1 MC UMACE 1*1G/120/6L/5R/ CB_bg_0.3D_HG_TC11	CM575	N
AS4330-161G12Mi	TWN	GCTWN	LX.ATV0Y.005	AS4330-161G12Mi VHB32ATTW1 MC UMACE 1*1G/120/6L/5R/ CB_bg_0.3D_HG_TC11	CMT1600	N
AS4330-161G12Mi	CHINA	China	LX.ATV0Y.004	AS4330-161G12Mi VHB32ATCN1 MC UMACE 1*1G/120/6L/5R/ CB_bg_0.3D_HG_SC11	CMT1600	N
AS4330-161G12Mi	CHINA	Hong Kong	LX.ATV0Y.003	AS4330-161G12Mi VHB32ATHK2 MC UMACE 1*1G/ 120/6L/5R/ CB_bg_0.3D_HG_ZH31	CMT1600	N
AS4330-571G12Mi	CHINA	China	LX.ATV0Y.002	AS4330-571G12Mi VHB32ATCN1 MC UMACE 1*1G/120/6L/5R/ CB_bg_0.3D_HG_SC11	CM575	N
AS4330-571G12Mi	CHINA	Hong Kong	LX.ATV0Y.001	AS4330-571G12Mi VHB32ATHK2 MC UMACE 1*1G/ 120/6L/5R/ CB_bg_0.3D_HG_ZH31	CM575	N
AS4730ZG - 322G25Mn	TWN	GCTWN	LX.AW20Y.003	AS4730ZG-322G25Mn VHB32ATTW1 MC 82MEXTHM256CE 1*2G/250/ BT/6L/5R/ CB_bgn_0.3D_HG_TC11	PMDT3200	BT 2.0
AS4730ZG - 322G25Mn	CHINA	China	LX.AW20Y.002	AS4730ZG-322G25Mn VHB32ATCN1 MC 82MEXTHM256CE 1*2G/250/6L/ 5R/CB_bgn_0.3D_HG_SC11	PMDT3200	N
AS4730ZG - 322G25Mn	CHINA	Hong Kong	LX.AW20Y.001	AS4730ZG-322G25Mn VHB32ATHK2 MC 82MEXTHM256CE 1*2G/250/6L/ 5R/CB_bgn_0.3D_HG_ZH31	PMDT3200	N

Model	LCD	Mem1	Mem2	HDD 1 (GB)	ODD	WLAN1	WLAN 2
AS4730Z-321G16Mi	N14.1WXGAG	SO1GBII6	N	N160GB5.4KS	NSM8XS	3rd WiFi BG	3rd WiFi BG
AS4730Z-321G16Mn	N14.1WXGAG	SO1GBII6	N	N160GB5.4KS	NSM8XS	3rd WiFi 1x2 BGN	3rd WiFi 1x2 BGN
AS4730Z-322G25Mn	N14.1WXGAG	SO2GBII6	N	N250GB5.4KS	NSM8XS	3rd WiFi 1x2 BGN	3rd WiFi 1x2 BGN
AS4730Z-321G16i	N14.1WXGAG	SO1GBII6	N	N160GB5.4KS	N	3rd WiFi BG	3rd WiFi BG
AS4730Z-321G16n	N14.1WXGAG	SO1GBII6	N	N160GB5.4KS	N	3rd WiFi 1x2 BGN	3rd WiFi 1x2 BGN

CLICK HERE TO **DOWNLOAD** THE COMPLETE MANUAL

- Thank you very much for reading the preview of the manual.
- You can download the complete manual from: www.heydownloads.com by clicking the link below



- Please note: If there is no response to CLICKING the link, please download this PDF first and then click on it.

CLICK HERE TO **DOWNLOAD** THE COMPLETE MANUAL