

Aspire 1820PT/1420P Series

Service Guide

Service guide files and updates are available on the ACER/CSD web; for more information, please refer to <http://csd.acer.com.tw>

CLICK HERE TO **DOWNLOAD** THE COMPLETE MANUAL

- Thank you very much for reading the preview of the manual.
- You can download the complete manual from: www.heydownloads.com by clicking the link below



- Please note: If there is no response to CLICKING the link, please download this PDF first and then click on it.

CLICK HERE TO **DOWNLOAD** THE COMPLETE MANUAL

System Specifications

Features

Below is a brief summary of the computer's many features:

Operating System

- Genuine Windows® 7

Platform

- Intel® Core™2 Duo processor*
- Intel® Pentium® mobile processor*
- Intel® Celeron® mobile processor*
- Mobile Intel® GS45 Express Chipset

System Memory

- Dual-Channel SDRAM support
- Up to 4 GB of DDR3 1066 MHz memory, upgradeable to 8 GB using two soDIMM modules

Display and graphics

- 11.6" HD 1366 x 768
- Convertible display
- Mobile Intel® GS45 Express Chipset

Storage subsystem

- 2.5" hard disk drive
- Multi-in-1 card reader

Audio subsystem














- Optimized 2nd Generation Dolby® Sound Room® audio enhancement
- High-definition audio support
- S/PDIF (Sony/Philips Digital Interface) support for digital speakers
- MS-Sound compatible
- Built-in microphone

Communication

- Integrated Acer Crystal Eye webcam*
- WWAN: UMTS/HSPA at 850/900/1900/2100 MHz and quad-band GSM/GPRS/EDGE (850/900/1800/1900 MHz)*

Windows Keys

The keyboard has two keys that perform Windows-specific functions.

Key	Description
 Windows key	<p>Pressed alone, this key has the same effect as clicking on the Windows Start button; it launches the Start menu. It can also be used with other keys to provide a variety of functions:</p> <ul style="list-style-type: none"><  >: Open or close the Start menu<  > + <D>: Display the desktop<  > + <E>: Open Windows Explore<  > + <F>: Search for a file or folder<  > + <L>: Lock your computer (if you are connected to a network domain), or switch users (if you're not connected to a network domain)<  > + <M>: Minimizes all windows<  > + <R>: Open the Run dialog box<  > + <U>: Open Ease of Access Center<  > + <BREAK>: Display the System Properties dialog box<  > + <TAB>: Cycle through programs on the taskbar<CTRL> + <  > + <F>: Search for computers (if you are on a network) <p>Note: Depending on your edition of Windows 7, some shortcuts may not function as described.</p>
 Application key	This key has the same effect as clicking the right mouse button; it opens the application's context menu.

Item	Specifications
Interface	USB 2.0
Antenna	1 x 2

Embedded Controller

Item	Specifications
Chipset	Winbond WPCE775LA0DG
Features	<ul style="list-style-type: none"> • Shared SPI BIOS flash memory with page programming support. • High-accuracy, high-speed ADC. • Up to 95 GPIO ports (including keyboard scanning) with a variety of wake-up events (up to 42 wake-up inputs). • 16-bit RISC core, with up to 4 Mbytes of external address space, running at up to 25 MHz. • 128-pin LQChipFP

Battery

Item	Specifications
	6 Cell
Vendor & model name	SIMPLO UM09F70 3S2P SANYO UM09F36 3S2P
Battery Type	Li-ion
Pack capacity	SANYO 6 cell 5600mAh SAMSUNG 6 cell 5600mAh LGC 6 cell 5600mAh
Number of battery cell	6
Package configuration	3 cells in series, 2 series in parallel
Normal voltage	11.1
Charge voltage	12.6

BIOS Flash Utility

The BIOS flash memory update is required for the following conditions:

- New versions of system programs
- New features or options
- Restore a BIOS when it becomes corrupted.

To run the BIOS flash utility:

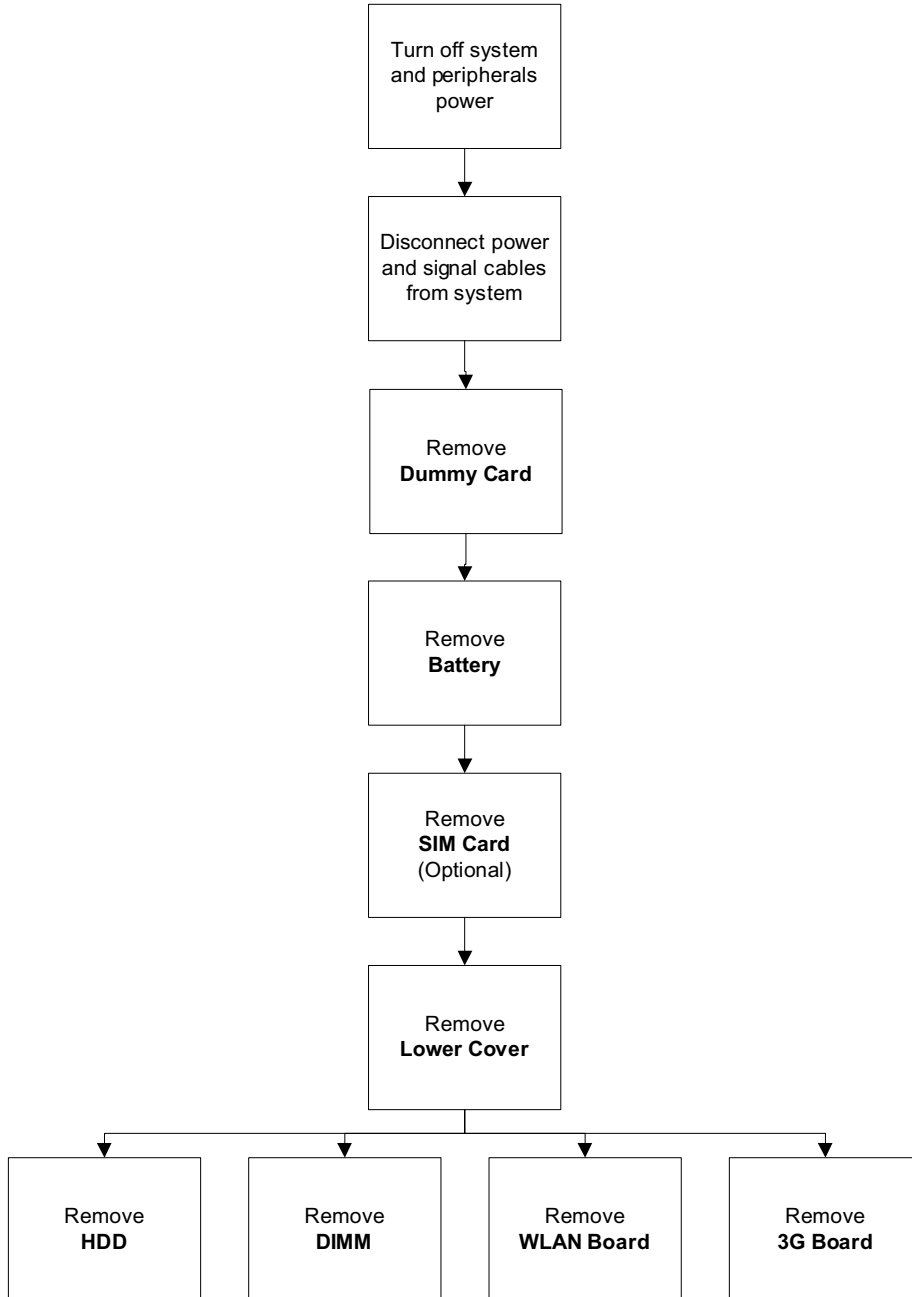
1. Copy the BIOS flash tool and the BIOS into a USB flash disk.
2. Set the computer to boot from the USB flash disk. See “Boot” on page 29.
3. On boot-up enter at the DOS prompt:

C:\> flashit.exe v3106.fd /dc /beep:2000

External Module Disassembly Process

NOTE: The product previews seen in the disassembly procedures may not represent the final product color or configuration.

External Modules Disassembly Flowchart



Screw List

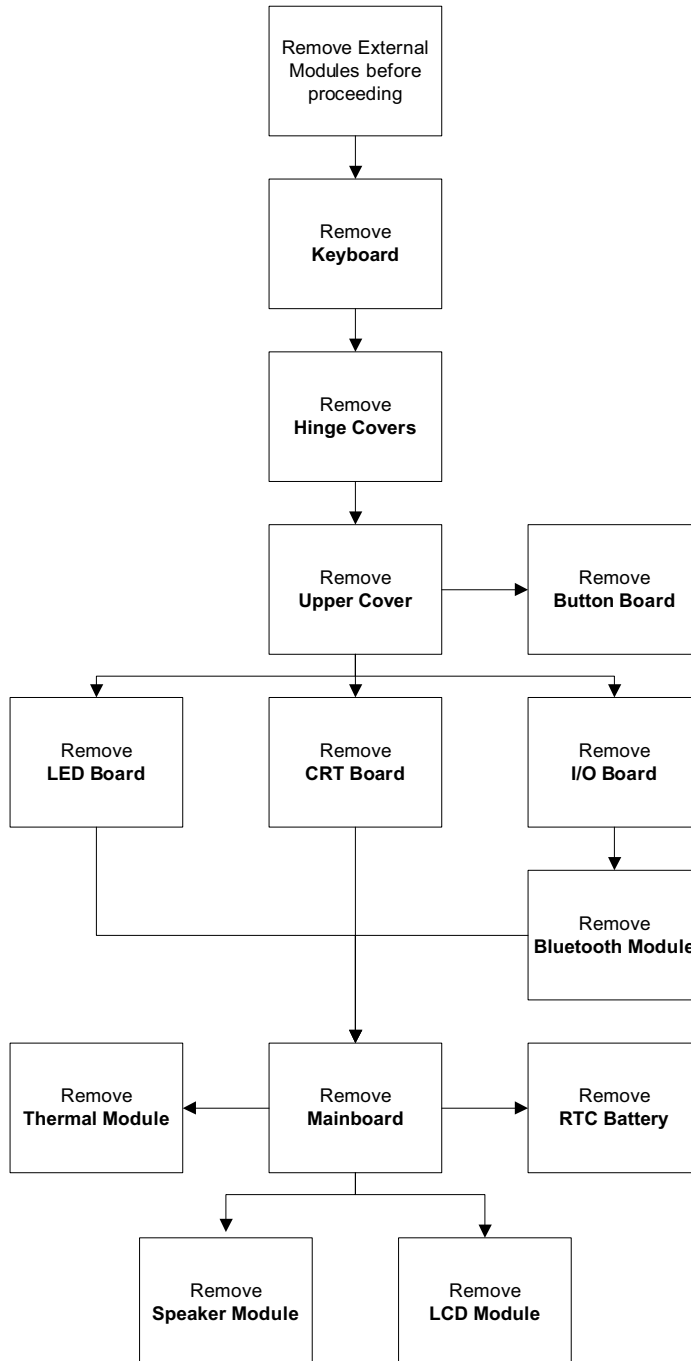
Step	Screw	Quantity	Part No.
WLAN	M2*3	1	86.ARE07.002
3G Module	M2*3	1	86.ARE07.002

Main Unit Disassembly Process

IMPORTANT: Cable paths and positioning may not represent the actual model. During the removal and replacement of components, ensure all available cable channels and clips are used and that the cables are replaced in the same position.

NOTE: The product previews seen in the disassembly procedures may not represent the final product color or configuration.

Main Unit Disassembly Flowchart



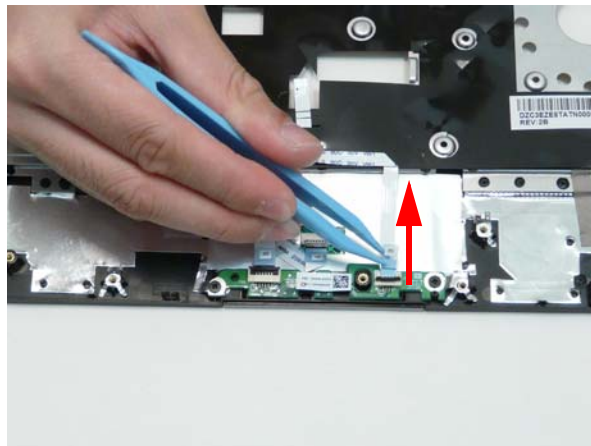
Removing the Button Board

IMPORTANT: The Touchpad Board cannot be removed individually. To replace the Touchpad Board, replace the entire Upper Cover.

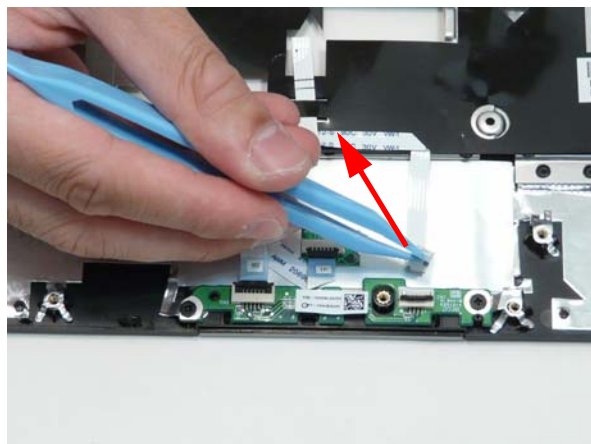
1. See “Removing the Upper Cover” on page 57.
2. Unlock the button board cable.



3. Disconnect the button board cable.



4. Pull the button board cable off the adhesive.




Removing the CRT Board

1. See "Removing the Upper Cover" on page 57.
2. Turn the LCD module to expose the CRT board.



3. Remove the one (1) screw.



Step	Screw	Quantity	Screw Type.
CRT Board	M2*4	1	

Screw List

Step	Screw	Quantity	Part No.
LCD Bezel	M2*5	2	86.TG607.004
LCD Panel	M2*4	4	86.W0107.003
LCD Brackets	M2*2.5	4	86.TPK07.001
Touchscreen Board	M2*4	2	86.W0107.003
Hinge	M2*4	3	86.W0107.003

CLICK HERE TO **DOWNLOAD** THE COMPLETE MANUAL

- Thank you very much for reading the preview of the manual.
- You can download the complete manual from: www.heydownloads.com by clicking the link below

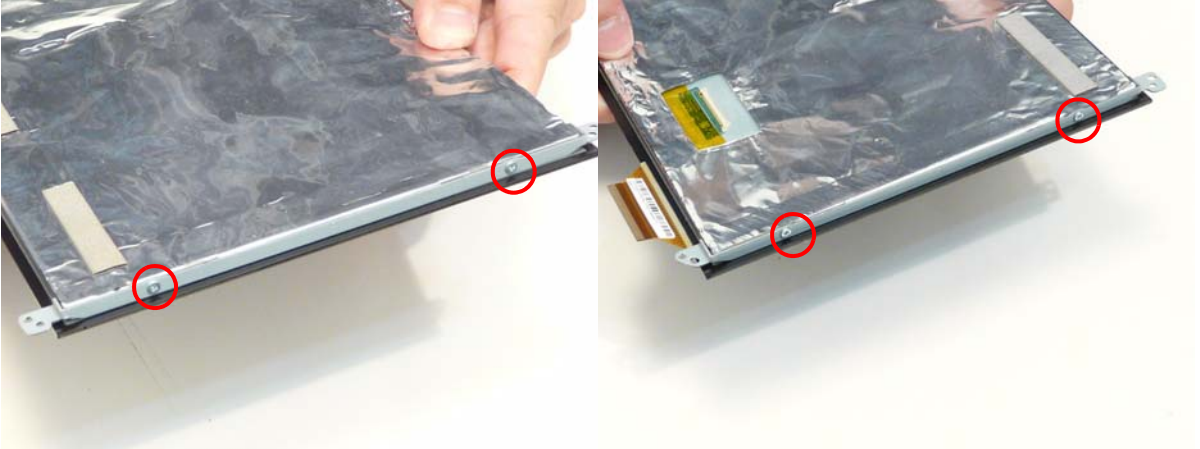



- Please note: If there is no response to CLICKING the link, please download this PDF first and then click on it.

CLICK HERE TO **DOWNLOAD** THE COMPLETE MANUAL

Removing the LCD Brackets

1. See "Removing the Microphone" on page 86.
2. Remove the four (4) screws from the left and right brackets.




Step	Screw	Quantity	Screw Type.
LCD Panel Brackets	M2*2.5	4	

3. Remove the brackets.



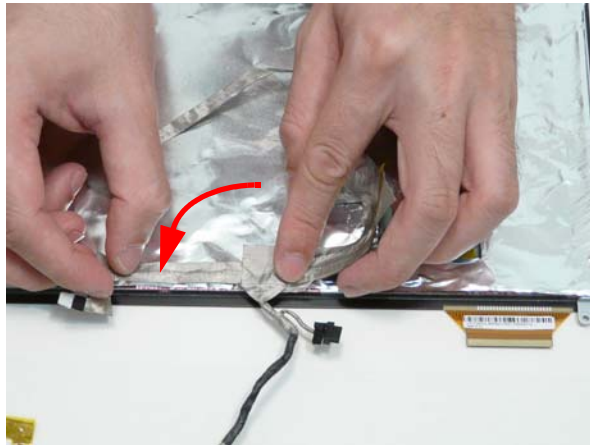
2. Replace the four (4) screws.



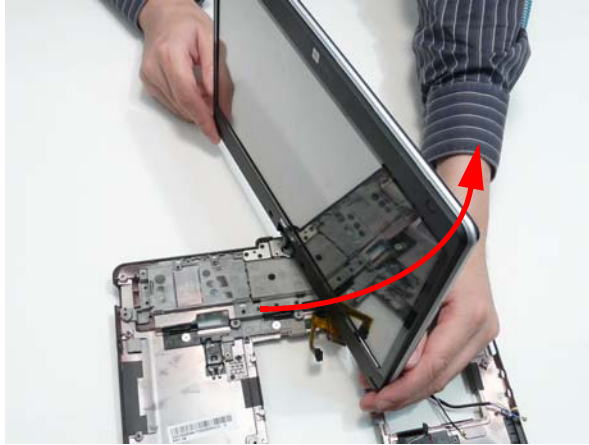
Step	Screw	Quantity	Screw Type.
LCD Panel Brackets	M2*2.5	4	

Replacing the LCD Cable

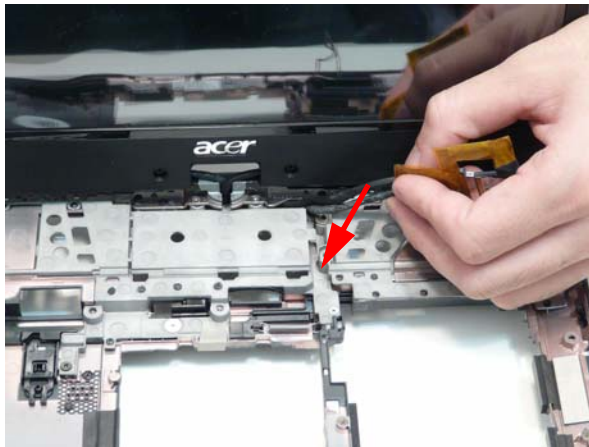
1. Adhere the touchscreen cable to the panel.



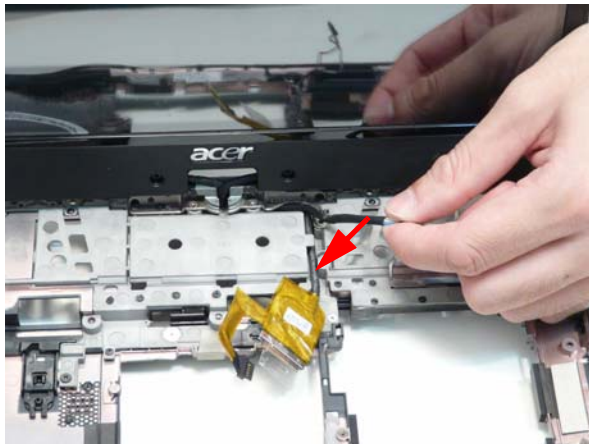
3. Turn the LCD module.



4. Lay the LCD cable in the retention guide.

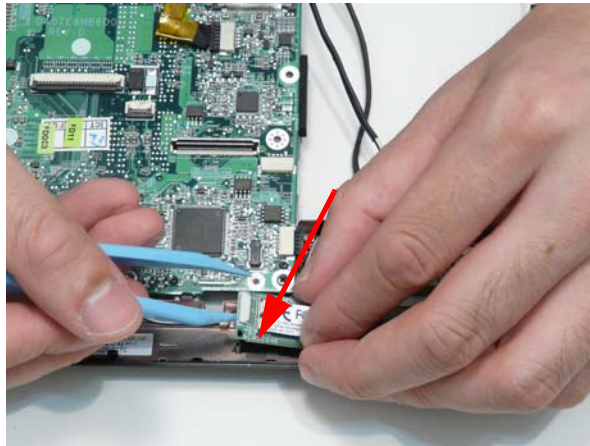


5. Lay the antenna cable in the retention guide.

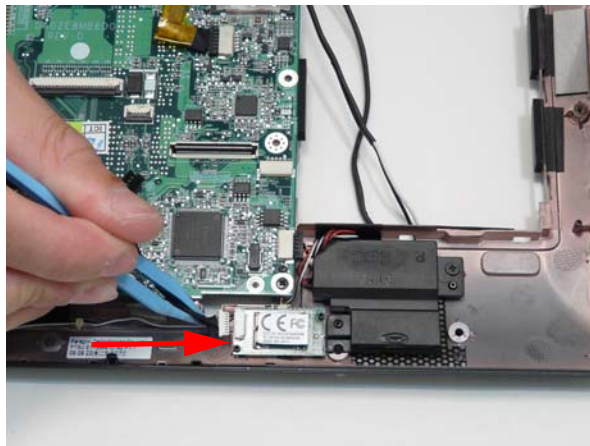


Replacing the Bluetooth Module

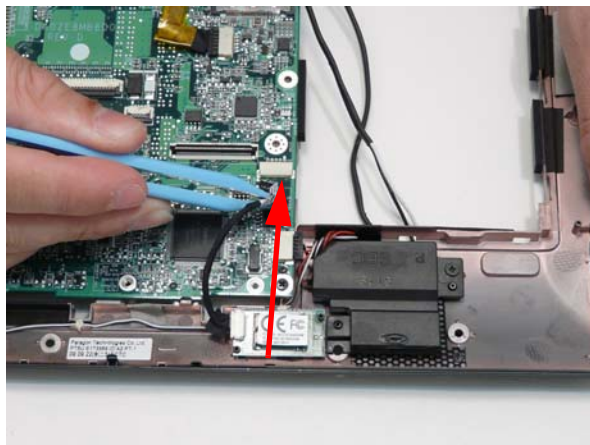
1. Adhere the Bluetooth module to the bottom cover.



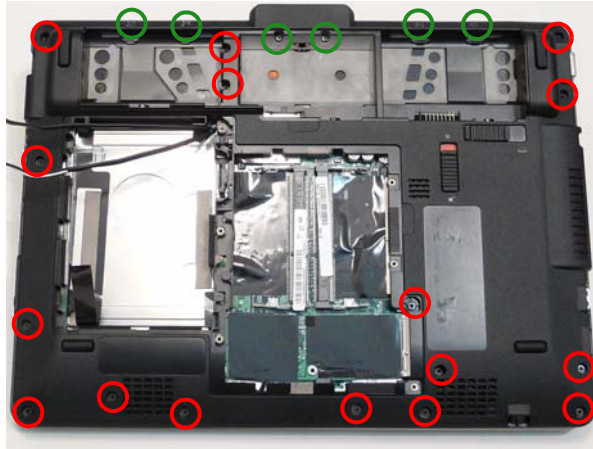
2. Connect the Bluetooth cable to the Bluetooth module.





3. Connect the Bluetooth cable to the main board.



7. Turn the computer over and replace the twenty-two (22) screws in the lower cover.



Step	Screw	Quantity	Screw Type.
Lower Cover	M2*5 (Red Call Out)	16	
	M2*4 (Green Call Out)	6	

Replacing the Hinge Covers

1. Replace the hinge bezel.



Replacing the SIM Card

1. Insert the SIM card into the slot.



Replacing the Battery

1. Insert the battery outer edge into the slots.



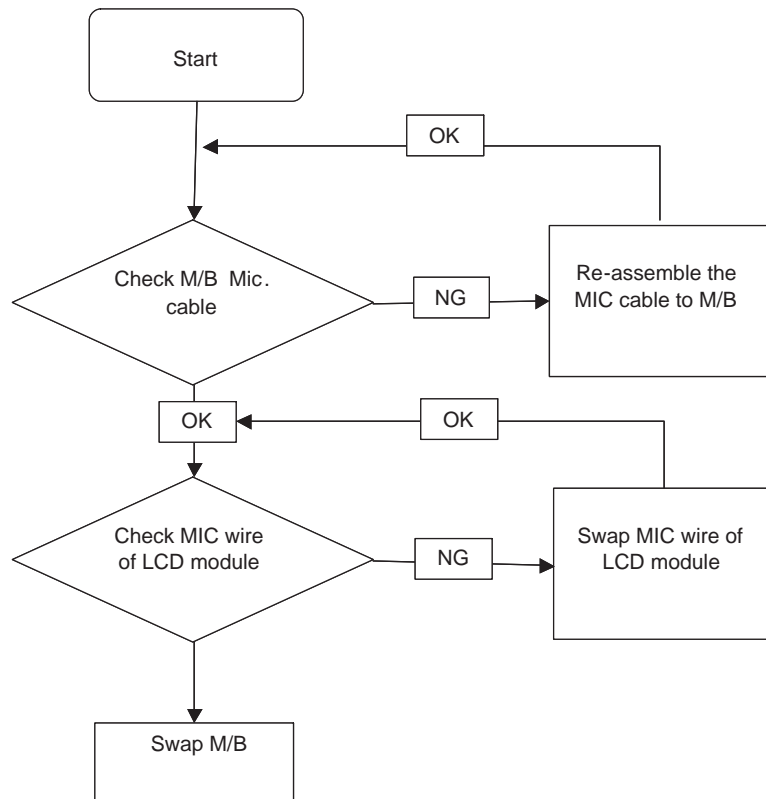
2. Push the battery down into place.



8. Remove and recently installed hardware or software.
9. Restore system and file settings from a known good date using **System Restore**.
If the issue is not fixed, repeat the preceding steps and select an earlier time and date.
10. Reinstall the Operating System.
11. If the Issue is still not resolved, see “Online Support Information” on page 165.

Internal Microphone Failure

If the internal **Microphone** fails, perform the following actions one at a time to correct the problem. Do not replace non-defective FRUs:








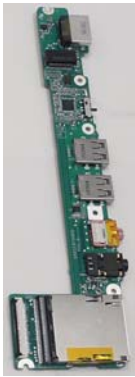

Microphone Problems

If internal or external **Microphones** do not operate correctly, perform the following actions one at a time to correct the problem.

1. Check that the microphone is enabled. Navigate to **Start** → **Control Panel** → **Hardware and Sound** → **Sound** and select the **Recording** tab.
2. Right-click on the **Recording** tab and select **Show Disabled Devices** (clear by default).
3. The microphone appears on the **Recording** tab.
4. Right-click on the microphone and select **Enable**.
5. Select the microphone then click **Properties**. Select the **Levels** tab.
6. Increase the volume to the maximum setting and click **OK**.
7. Test the microphone hardware:
 - a. Select the microphone and click **Configure**.
 - b. Select **Set up microphone**.

0x56	PLATFORM_IDE
0x57	SMBIOS
0x58	MEMORY_SUB_CLASS
0x59	MISC_SUB_CLASS
0x5A	CON_PLATFORM
0x5B	SAVE_MEMORY_CONFIG
0x5C	ACPI_SUPPORT
0x5D	CON_SPLITTER_UGA_VGA / CON_SPLITTER
0x5E	VGA_CLASS
0x5F	DATA_HUB
0x60	DISK_IO
0x61 0x62	MEMORY_TEST CRISIS_RECOVERY
0x63	LEGACY_8259
0x64	LEGACY_REGION
0x65	LEGACY_INTERRUPT
0x66	BIOS_KEYBOARD
0x67	BIOS_VEDIO
0x68	MONITER_KEY
0x69	LEGACY_BIOS
0x6A	LEGACY_BIOS_PLATFORM
0x6B	PCI_PLATFORM
0x6C	ISA_FLOOPY
0x6D	PS2_MOUSE
0x6E	USB_BOT
0x6F	USB_CBIO

Fru List

CATEGORY	PARTNAME	ACER PART NO.
ADAPTER		
	ADAPTER DELTA 30W 19V 1.7X5.5X11 BLACK ADP-30JH BA LF	AP.03001.001
	ADAPTER LITE-ON 30W 1.7X5.5X11 BLACK PA-1300-04AC LF	AP.03003.001
	ADAPTER HIPRO 30W 19V 1.7X5.5X11 BLACK HP-A0301R3 B1LF LF	AP.0300A.001
BATTERY		
	Battery SIMPLO UM-2009F Li-Ion 3S2P SAMSUNG 6 cell 5600mAh Main COMMON ID:UM09F70	BT.00607.114
	Battery SANYO UM-2009F Li-Ion 3S2P SANYO 6 cell 5600mAh Main COMMON	BT.00603.105
BOARD		
	Foxconn Bluetooth FOX BRM 2046 BT2.1	BH.21100.004
	Lan Intel WLAN 112BN.HMWG MM#903341	KI.CPH01.001
	Lan Intel WLAN 512AG_HMWG Shirley Peak 5100 MM#897072	KI.SPH01.005
	Lan Intel WLAN 512AN_HMWG Shirley Peak 5100 MM#895373	KI.SPH01.003
	Foxconn Wireless LAN Atheros HB93 1x2 BGN (HM)	NI.23600.046
	CRT BOARD	55.PL907.001
	LED BOARD	55.PL907.002
	CARD READER BOARD	55.PL907.003
	TP BOARD	55.PL907.004

RO	Country	Acer Part No	Description	CPU
EME A	Holland	LX.PL902.017	AS1420P-232G25n W7HP64ATNL1 MC UMACkk 1*2G/250/BT/6L2.8/5R/ CB_bgn_0.3D_AU_NL11	CMSU230 0B
EME A	Eastern Europe	LX.PL902.016	AS1420P-232G25n W7HP64ATEU7 MC UMACkk 1*2G/250/BT/6L2.8/5R/ CB_bgn_0.3D_AU_ENQ1	CMSU230 0B
EME A	Czech	LX.PL902.015	AS1420P-232G25n W7HP64ATCZ2 MC UMACkk 1*2G/250/BT/6L2.8/5R/ CB_bgn_0.3D_AU_SK11	CMSU230 0B
EME A	Denmark	LX.PL902.014	AS1420P-232G25n W7HP64ATDK2 MC UMACkk 1*2G/250/BT/6L2.8/5R/ CB_bgn_0.3D_AU_ENS1	CMSU230 0B
EME A	Cyprus	LX.PL902.013	AS1420P-232G25n W7HP64ATCY1 MC UMACkk 1*2G/250/BT/6L2.8/5R/ CB_bgn_0.3D_AU_ES61	CMSU230 0B
EME A	Eastern Europe	LX.PL902.012	AS1420P-232G25n W7HP64ATEU5 MC UMACkk 1*2G/250/BT/6L2.8/5R/ CB_bgn_0.3D_AU_PL71	CMSU230 0B
EME A	Eastern Europe	LX.PL902.011	AS1420P-232G25n W7HP64ATEU4 MC UMACkk 1*2G/250/BT/6L2.8/5R/ CB_bgn_0.3D_AU_SV21	CMSU230 0B
EME A	Poland	LX.PL902.010	AS1420P-232G25n W7HP64ATPL1 MC UMACkk 1*2G/250/BT/6L2.8/5R/ CB_bgn_0.3D_AU_PL11	CMSU230 0B
EME A	UK	LX.PL902.009	AS1420P-232G25n W7HP64ATGB1 MC UMACkk 1*2G/250/BT/6L2.8/5R/ CB_bgn_0.3D_AU_EN11	CMSU230 0B
EME A	Greece	LX.PL902.008	AS1420P-232G25n W7HP64ATGR1 MC UMACkk 1*2G/250/BT/6L2.8/5R/ CB_bgn_0.3D_AU_EL31	CMSU230 0B
EME A	Serbia/ Macedonia	LX.PL902.007	AS1420P-232G25n W7HP64ATCS1 MC UMACkk 1*2G/250/BT/6L2.8/5R/ CB_bgn_0.3D_AU_SL11	CMSU230 0B
EME A	Switzerland	LX.PL902.006	AS1420P-232G25n W7HP64ATCH1 MC UMACkk 1*2G/250/BT/6L2.8/5R/ CB_bgn_0.3D_AU_IT41	CMSU230 0B
EME A	Eastern Europe	LX.PL902.004	AS1420P-232G25n W7HP64ATEU7 MC UMACkk 1*2G/250/BT/6L2.8/5R/ CB_bgn_0.3D_AU_SL11	CMSU230 0B
EME A	Luxembour g	LX.PL902.005	AS1420P-232G25n W7HP64ATLU3 MC UMACkk 1*2G/250/BT/6L2.8/5R/ CB_bgn_0.3D_AU_IT41	CMSU230 0B
AAP	Australia/ New Zealand	LX.PL902.003	AS1420P-232G25n W7HP64ATAU1 MC UMACkk 1*2G/250/BT/6L2.8/5R/ CB_bgn_0.3D_AU_ES61	CMSU230 0B
TWN	GCTWN	LX.PL902.002	AS1420P-232G25n W7HP64ATTW1 MC UMACkk 1*2G/250/BT/6L2.8/5R/ CB_bgn_0.3D_AU_TC11	CMSU230 0B
WW	WW	S2.PL907.001	AS1420P-743G32n W7UT64AWW1 MC UMACkk 1G+2G/320/BT/6L2.8/5R/ CB_bgn_0.3D_AU_ES62	CM743B

RO	Country	Acer Part No	Description	CPU
AAP	Australia/ New Zealand	LX.PLN02.008	AS1820PT-732G25n W7HP64ATAU1 MC UMAGCkk 1*2G/250/BT/6L2.8/5R/ CB_n2_0.3D_E77W_AU_ES61	C2DSU730 0B
EME A	UK	LX.PLN02.010	AS1820PT-733G16n W7HP64ATGB1 MC UMAGCkk 2G+1G/160/BT/6L2.8/5R/ CB_n2_0.3D_E77W_AUk_EN11	C2DSU730 0B
EME A	Germany	LX.PLN02.007	AS1820PT-734G50n W7HP64ATDE1 MC UMAGCkk 2*2G/500_L/BT/6L2.8/5R/ CB_n2_0.3D_E77W_AU_DE11	C2DSU730 0B
AAP	Australia/ New Zealand	LX.PLN02.006	AS1820PT-734G50n W7HP64ATAU1 MC UMAGCkk 2*2G/500_L/BT/6L2.8/5R/ CB_n2_0.3D_E77W_AU_ES61	C2DSU730 0B
AAP	Australia/ New Zealand	LX.PLN02.005	AS1820PT-734G32n W7HP64ATAU1 MC UMAGCkk 2*2G/320/BT/6L2.8/5R/ CB_n2_0.3D_E77W_AU_ES61	C2DSU730 0B
AAP	Thailand	LX.PLN02.004	AS1820PT-734G50n EM W7HP64EMATTH1 MC UMAGCkk 2*2G/500_L/BT/6L2.8/5R/ CB_n2_0.3D_G2K_AU_TH41	C2DSU730 0B
AAP	Thailand	LX.PLN02.003	AS1820PT-734G50n EM W7HP64EMATTH1 MC UMAGCkk 2*2G/500_L/BT/6L2.8/5R/ CB_n2_0.3D_E77W_AU_TH41	C2DSU730 0B
TWN	GCTWN	LX.PLN02.002	AS1820PT-732G32n W7HP64ATTW1 MC UMAGCkk 1*2G/320/BT/6L2.8/5R/ CB_n2_0.3D_G2K_AU_TC11	C2DSU730 0B
AAP	Singapore	LX.PLN02.001	AS1820PT-734G32n W7HP64ATSG1 MC UMAGCkk 2*2G/320/BT/6L2.8/5R/ CB_n2_0.3D_G2K_AU_ES61	C2DSU730 0B
WW	WW	S2.PLN07.001	AS1820PT-734G50n W7UT64AWW1 MC UMAGCkk 2*2G/500_L/BT/6L2.8/5R/ CB_n2_0.3D_G2K_AU_ES62	C2DSU730 0B
EME A	Germany	LX.PN702.001	AS1820PT-734G50n W7HP64ATDE1 MC UMAGCrr 2*2G/500_L/BT/6L2.8/5R/ CB_n2_0.3D_E77W_AU_DE11	C2DSU730 0B
WW	WW	S2.PN702.001	AS1820PT-734G50i W7HP64AWW1 MC UMAGCrr 2*2G/500_L/BT/6L2.8/5R/ CB_abg_0.3D_E77W_AU_ES62	C2DSU730 0B

CLICK HERE TO **DOWNLOAD** THE COMPLETE MANUAL

- Thank you very much for reading the preview of the manual.
- You can download the complete manual from: www.heydownloads.com by clicking the link below



- Please note: If there is no response to CLICKING the link, please download this PDF first and then click on it.

CLICK HERE TO **DOWNLOAD** THE COMPLETE MANUAL